

V&V Reference Report

L2 ASCDS Version : 8.4.3

Observation 12966 - L2 Version 2
Chandra X-Ray Center

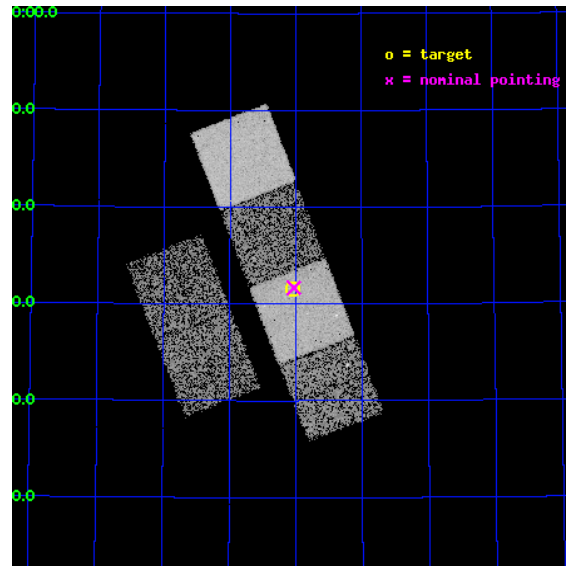
L2 Processing Date : Feb 26 2012

Contents

1	Front	2
2	OBI	3
2.1	OBI	3
2.1.1	Images	3
2.1.2	Bias	3
2.1.3	Parameters	4
2.1.4	Events	4
2.2	Compared Parameters	5
2.3	Aspect	6
2.4	Star Slots	9
2.4.1	Slot 3	9
2.4.2	Slot 4	10
2.4.3	Slot 5	11
2.4.4	Slot 6	12
2.4.5	Slot 7	13
2.5	FID Slots	14
2.5.1	Slot 0	14
2.5.2	Slot 1	15
2.5.3	Slot 2	16
A	Summary	17
A.1	Status	17
A.2	Comments	17

1 Front

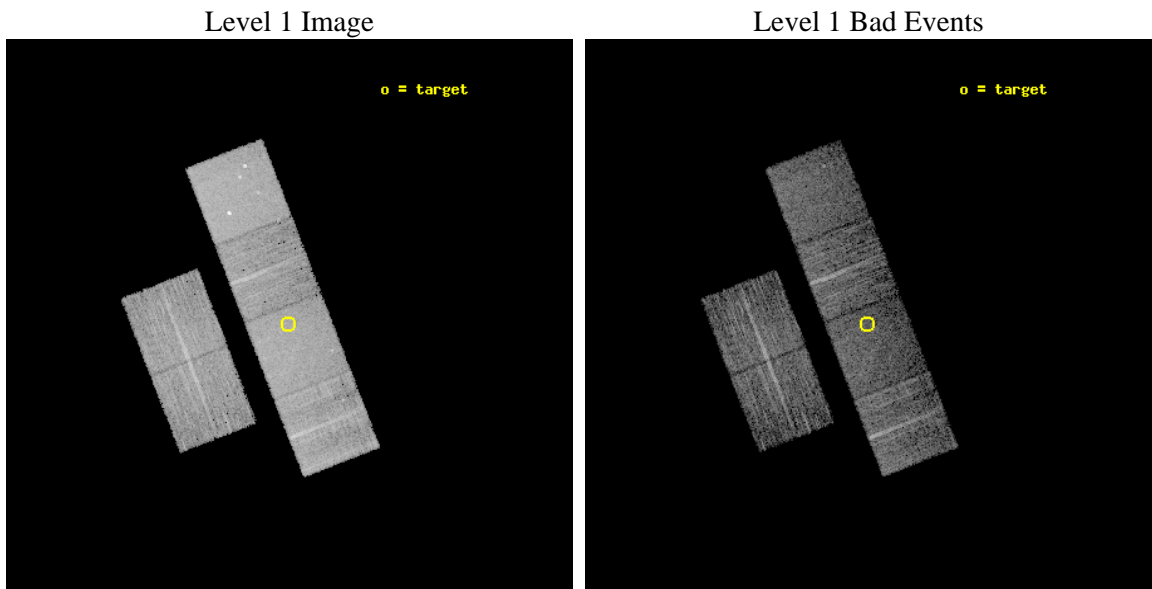
seq_num	600934	Sequence number
obs_id	12966	Observation id
title	X-rays from Isolated Elliptical Galaxies	Proposal title
observer	Dr. DAVID BUOTE	Principal investigator
object	PGC 31499	Source name
dtcycle	0	
cycle	P	events from which exps? Prim/Second/Both
ra_targ	159.26125	Observer's specified target RA [deg]
dec_targ	62.525417	Observer's specified target Dec [deg]
ra_nom	159.25733416019	Nominal RA [deg]
dec_nom	62.5279336702	Nominal Dec [deg]
roll_nom	68.825790270743	Nominal Roll [deg]
revision	2	Processing version of data
ontime	7465.4645888805	Sum of GTIs [s]
livetime	7370.932381093	Livetime [s]
ontime2	7465.5056288838	Sum of GTIs [s]
ontime3	7465.3414688706	Sum of GTIs [s]
ontime5	7465.4235488772	Sum of GTIs [s]
ontime6	7465.3825088739	Sum of GTIs [s]
ontime7	7465.4645888805	Sum of GTIs [s]
ontime8	7465.3004288673	Sum of GTIs [s]
l2events	77839	Number of level 2 events



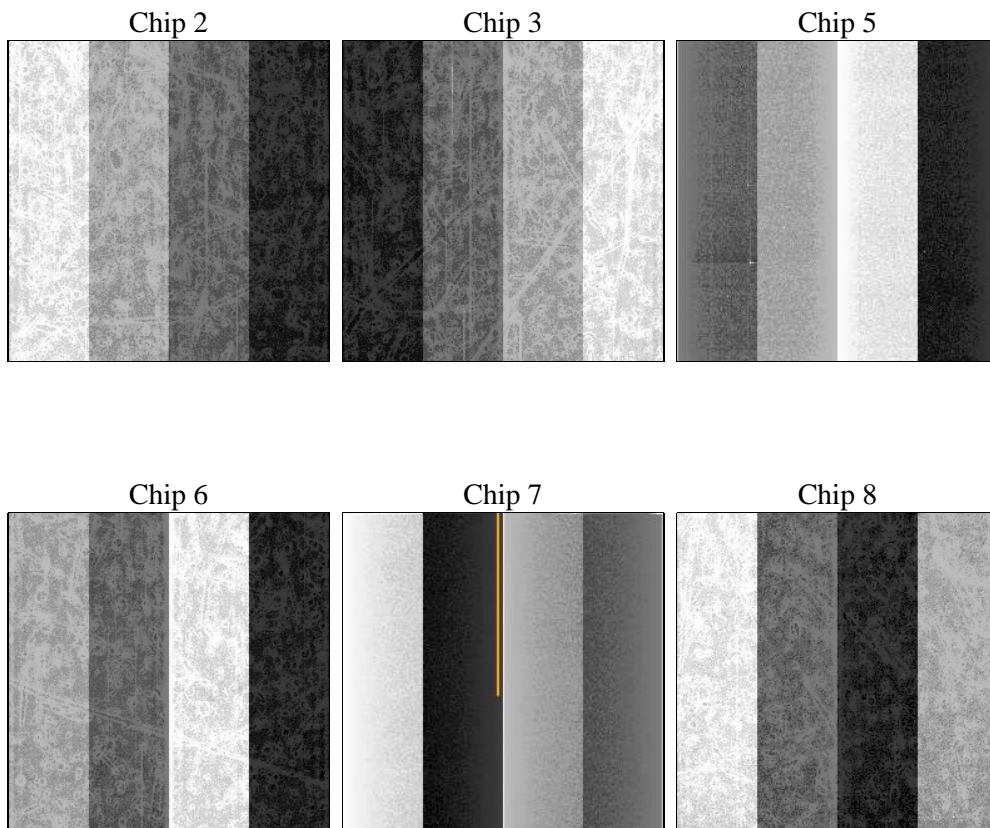
2 OBI

2.1 OBI

2.1.1 Images



2.1.2 Bias



2.1.3 Parameters

obi_num	1	Obi number	sched_exp_time	7500.000000	[s] Scheduled observation exposure time
ascdsver	8.4.3	Processing system revision	ontime	7465.4645888805	Sum of GTIs [s]
caldsver	4.4.8	 	ontime2	7465.5056288838	Sum of GTIs [s]
date	2012-02-26T16:32:40	Date and time of file creation	ontime3	7465.3414688706	Sum of GTIs [s]
revision	2	Processing version of data	ontime5	7465.4235488772	Sum of GTIs [s]
			ontime6	7465.3825088739	Sum of GTIs [s]
			ontime7	7465.4645888805	Sum of GTIs [s]
			ontime8	7465.3004288673	Sum of GTIs [s]
			l1events	327403	Number of level 1 events

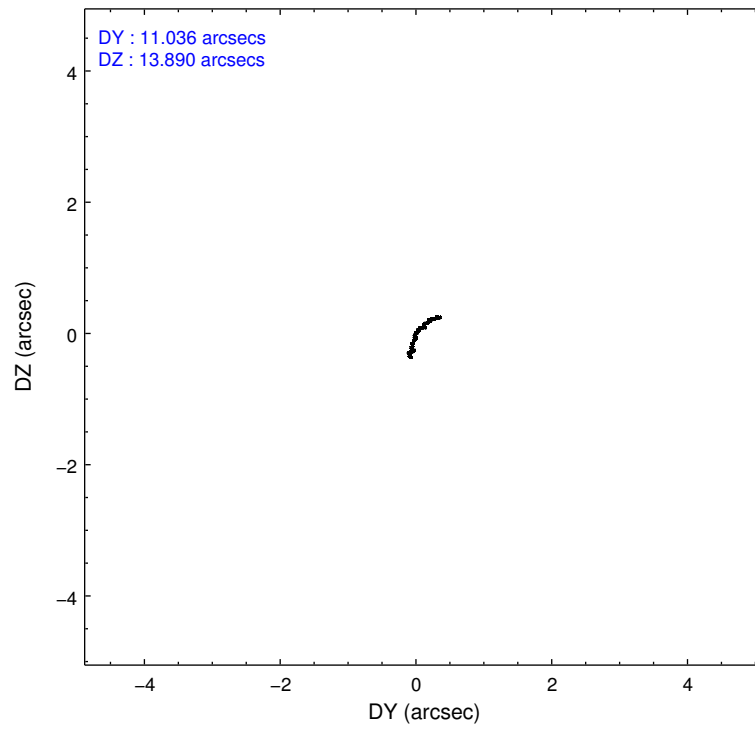
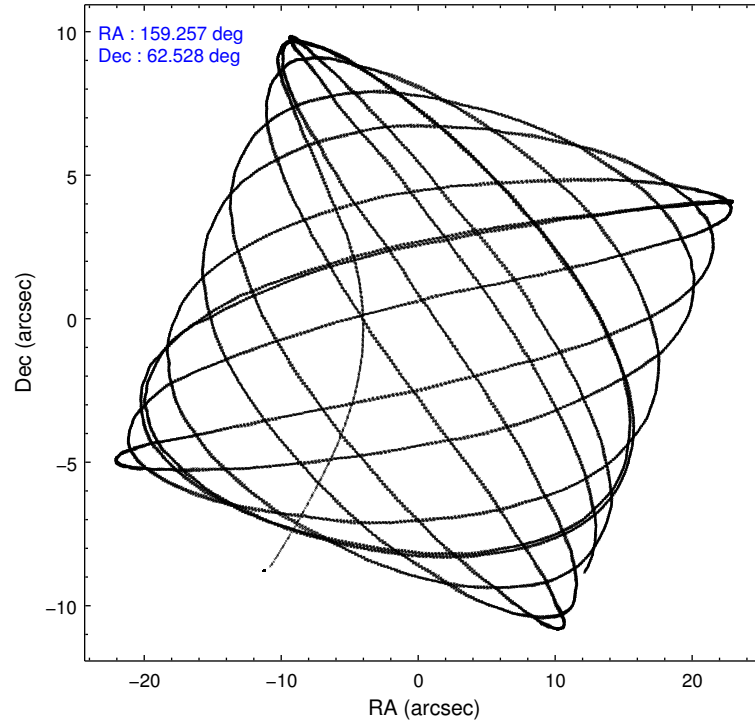
2.1.4 Events

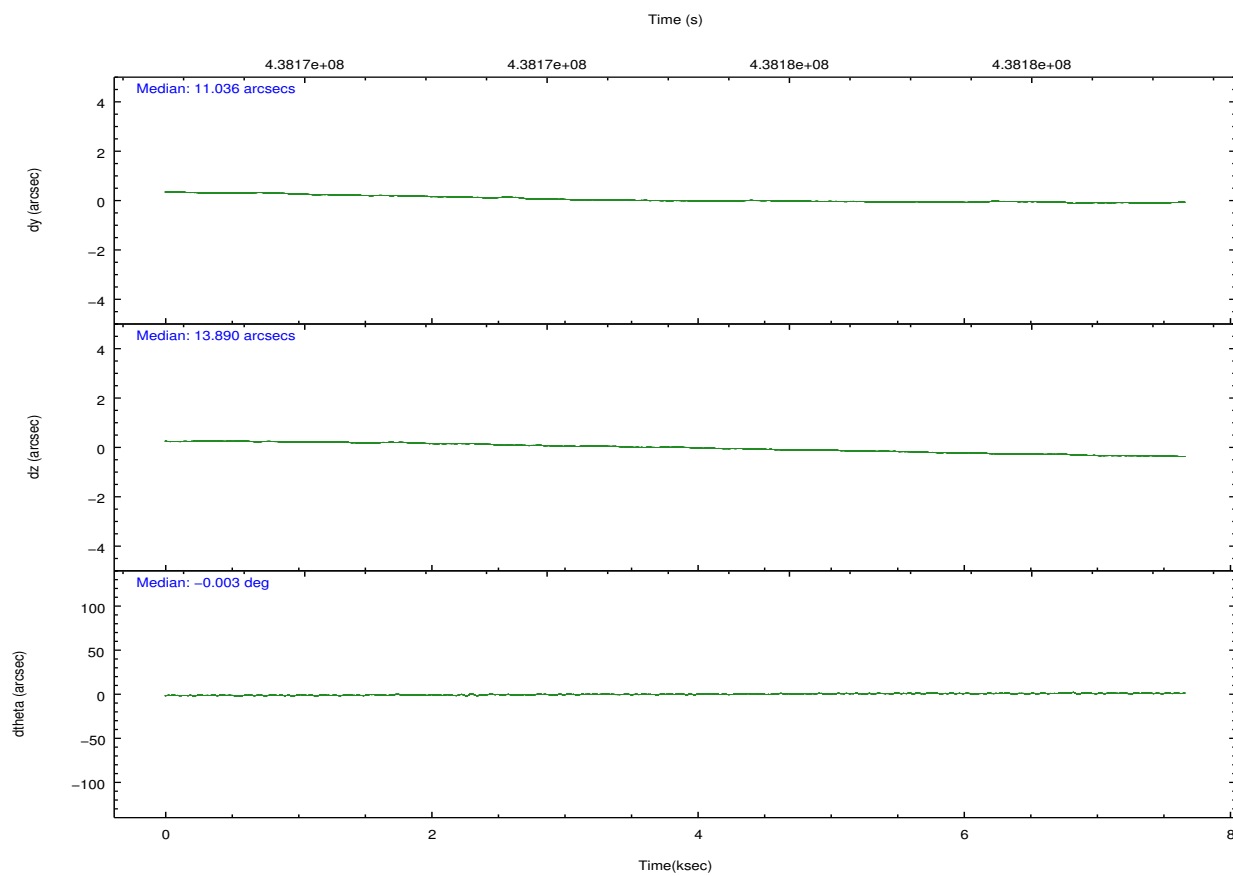
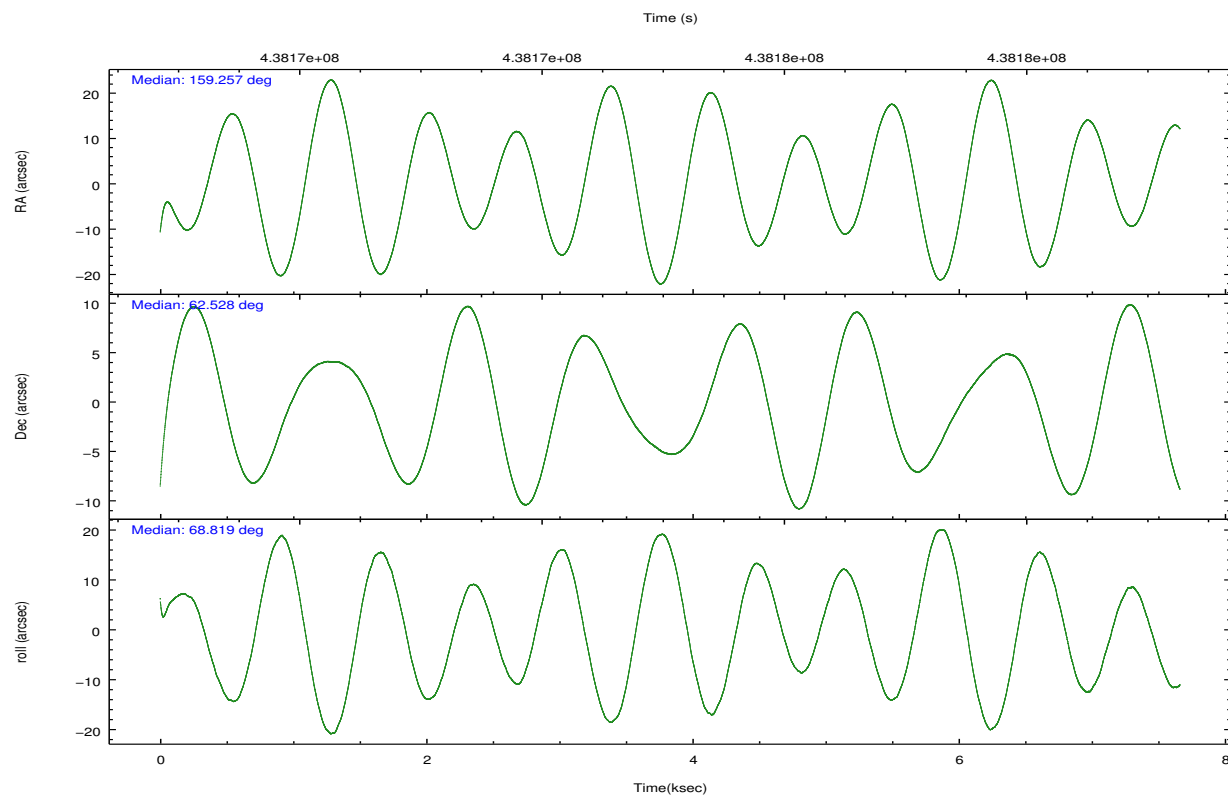
	ccd 2	ccd 3	ccd 5	ccd 6	ccd 7	ccd 8		ccd 2	ccd 3	ccd 5	ccd 6	ccd 7	ccd 8
level 1 events	47239	42426	74029	45514	59545	58650	grade 0 events	1762	1723	4616	1834	2379	4978
rejected events	42208	37533	37196	40139	32901	42844		3%	4%	6%	4%	3%	8%
rejected %	89%	88%	50%	88%	55%	73%	grade 1 events	28	20	137	16	64	53
								0%	0%	0%	0%	0%	0%
							grade 2 events	1278	1084	11047	1172	5358	3595
								2%	2%	14%	2%	8%	6%
							grade 3 events	489	505	1333	582	2364	1636
								1%	1%	1%	1%	3%	2%
							grade 4 events	545	553	1225	575	2275	1551
								1%	1%	1%	1%	3%	2%
							grade 5 events	1919	2228	5543	2187	6327	3176
								4%	5%	7%	4%	10%	5%
							grade 6 events	961	1031	18651	1215	14290	4058
								2%	2%	25%	2%	23%	6%
							grade 7 events	40257	35282	31477	37933	26488	39603
								85%	83%	42%	83%	44%	67%

2.2 Compared Parameters

Parameter	Planned	Actual	Parameter	Planned	Actual
Instrument	ACIS	ACIS	Obspar format version number	7	7
Detector	ACIS-235678	ACIS-235678	Obspar file type	PREDICTED	ACTUAL
Grating	NONE	NONE	Obspar update status	NONE	UPDATED
Data mode	VFAINT	VFAINT	CCD I0 on	N	N
Observation mode	POINTING	POINTING	CCD I1 on	N	N
[deg] Pointing RA	159.267252	159.2573341601879	CCD I2 on	O2	Y
[deg] Pointing Dec	62.500902	62.52793367020034	CCD I3 on	Y	Y
[deg] Pointing Roll	68.660369	68.82579027074254	CCD S0 on	N	N
[mm] SIM focus pos	-0.684267	-0.6828225247311905	CCD S1 on	Y	Y
[mm] SIM defocus	0	0.001444936568705701	CCD S2 on	Y	Y
[mm] SIM translation stage pos	-190.132523	-190.1400660498719	CCD S3 on	Y	Y
[mm] SIM translation stage offset	0	0.00754346686406393	CCD S4 on	O1	Y
[s] Observation start time (MET)	438171391.184000	438170078.49377	CCD S5 on	N	N
Observation start date	2011-11-20T10:15:25	2011-11-20T09:54:38	Number of optional ACIS chips dropped	0	0
[s] Observation end time (MET)	438178891.184000	438179965.13179	On-chip summing requested	N	N
Observation end date	2011-11-20T12:20:25	2011-11-20T12:39:25	Subarray requested	NONE	NONE
Read mode	TIMED	TIMED	Alternating exposures requested	N	N
			[s] Primary exposure time	0.000000	3.2

2.3 Aspect

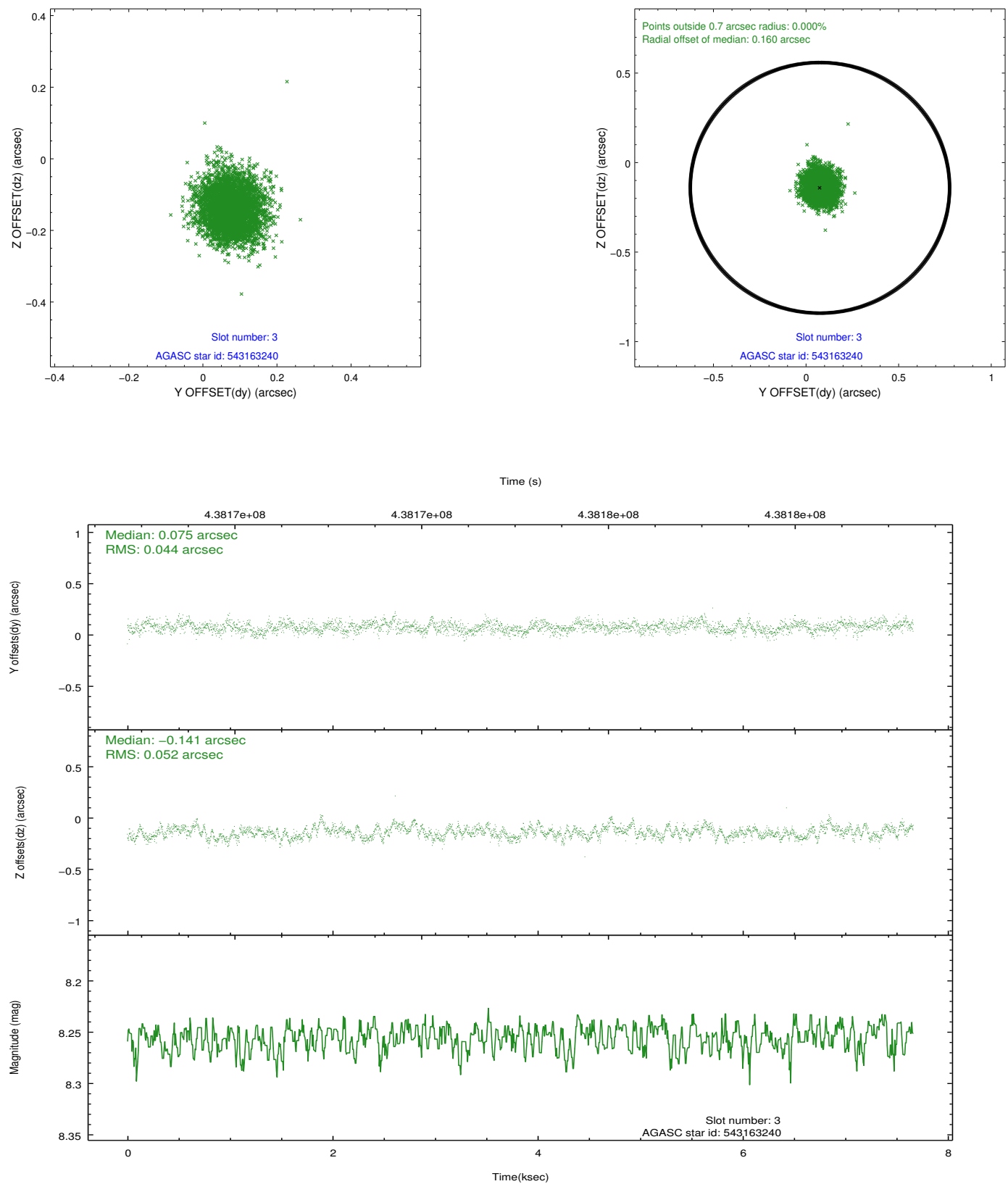




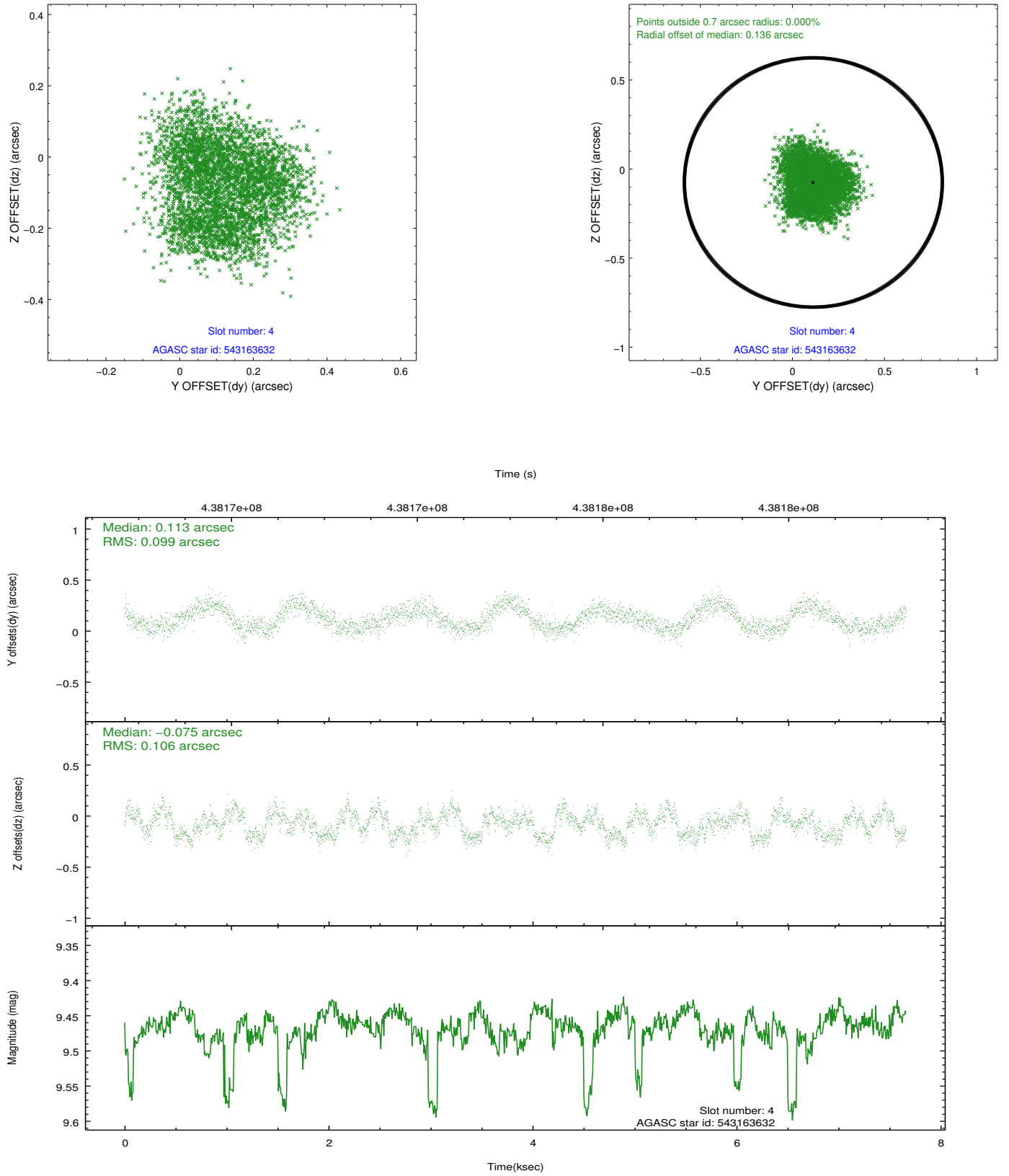
Slot Statistics

slot	status	id	mag	n_pts	med_dy	med_dz	dr1	dr2	ra	dec	mean_y	mean_z
0	FID	ACIS-S-2	6.87	1869	-0.049	-0.037	0.012	0.020	0.000000	0.000000	-764.03	-1735.24
1	FID	ACIS-S-4	6.96	1869	0.177	0.033	0.011	0.020	0.000000	0.000000	2149.16	172.50
2	FID	ACIS-S-5	6.99	1869	-0.160	0.012	0.014	0.024	0.000000	0.000000	-1816.01	167.05
3	GUIDE	543163240	8.26	3738	0.075	-0.141	0.073	0.115	158.535298	62.402279	-769.02	1010.45
4	GUIDE	543163632	9.47	3717	0.113	-0.075	0.159	0.231	159.010711	62.282586	-888.14	115.00
5	GUIDE	543564384	8.89	3738	-0.209	-0.232	0.112	0.173	158.283950	62.858649	622.51	1976.96
6	GUIDE	543567048	9.29	3736	0.001	0.106	0.150	0.235	159.661147	62.558513	432.90	-532.41
7	GUIDE	543302464	9.08	3730	0.013	0.338	0.124	0.190	160.300708	61.908465	-1335.65	-2402.73

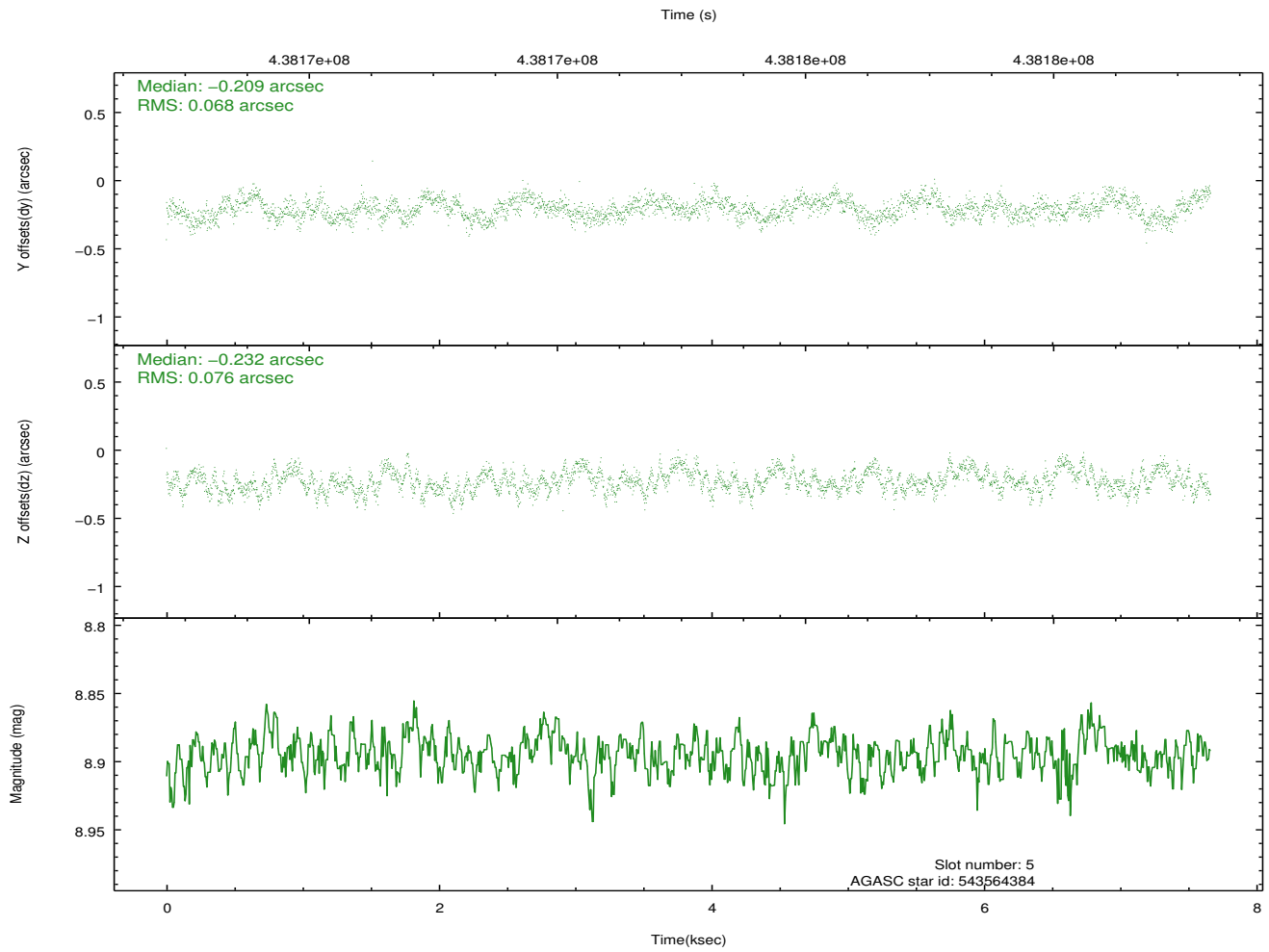
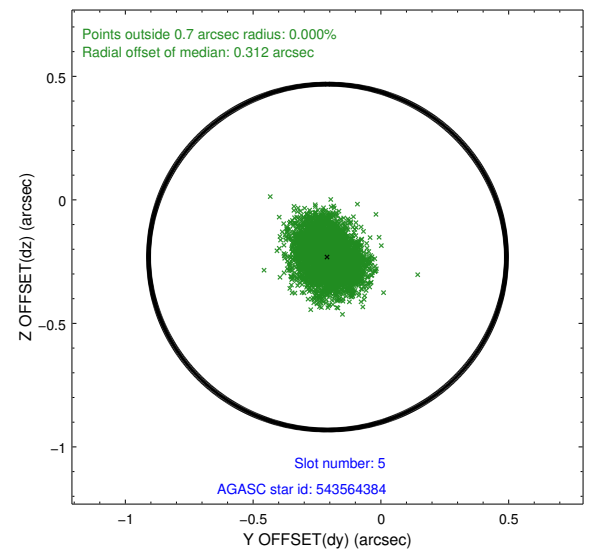
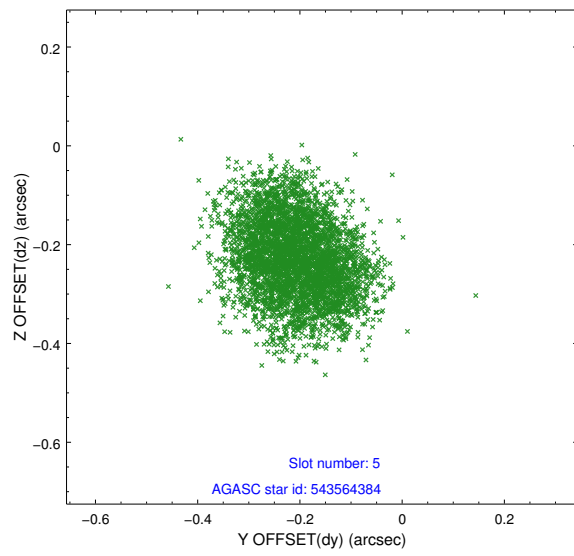
2.4.1 Slot 3



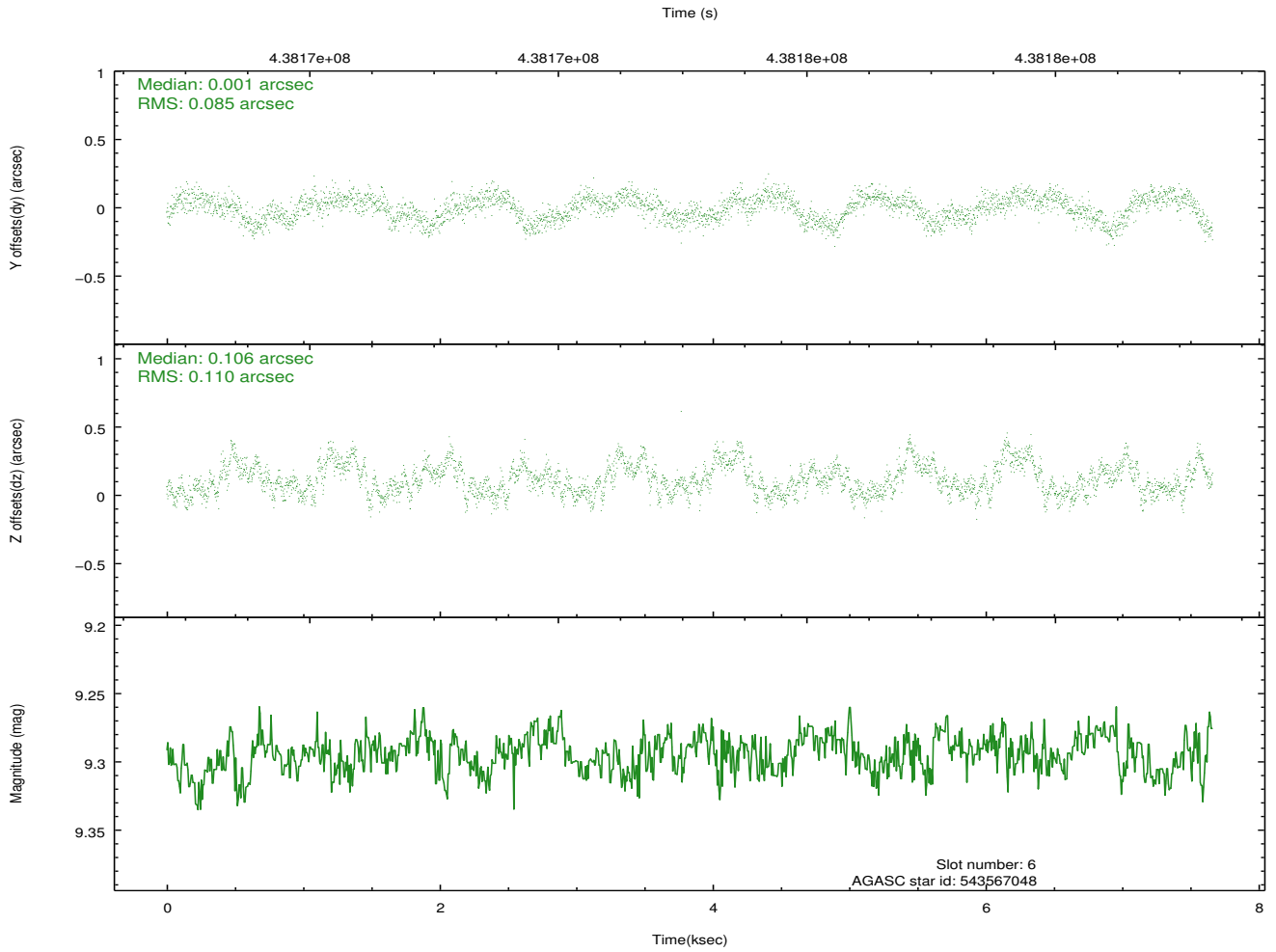
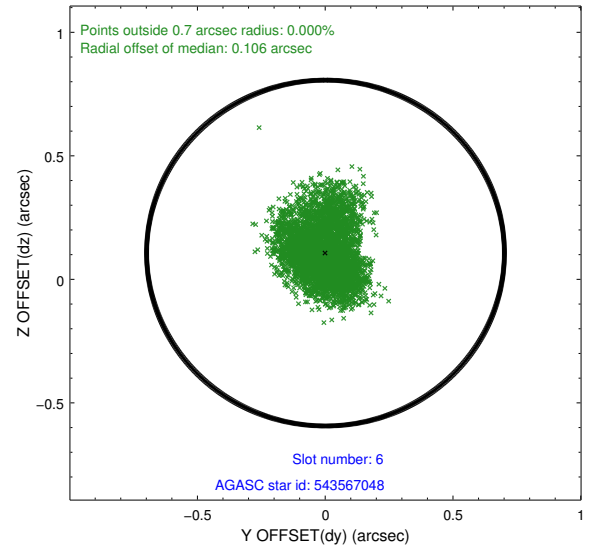
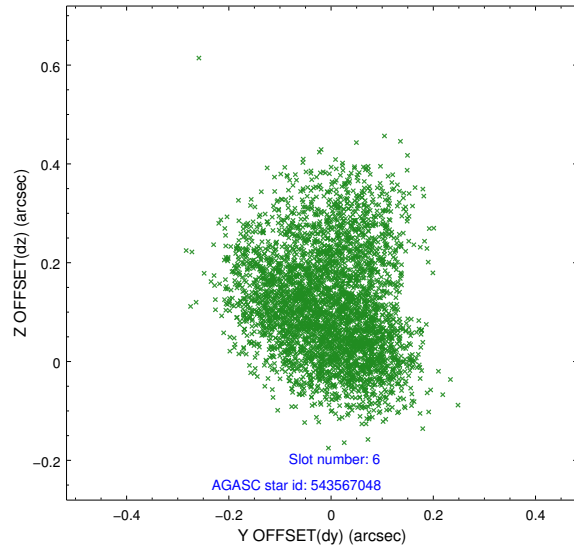
2.4.2 Slot 4



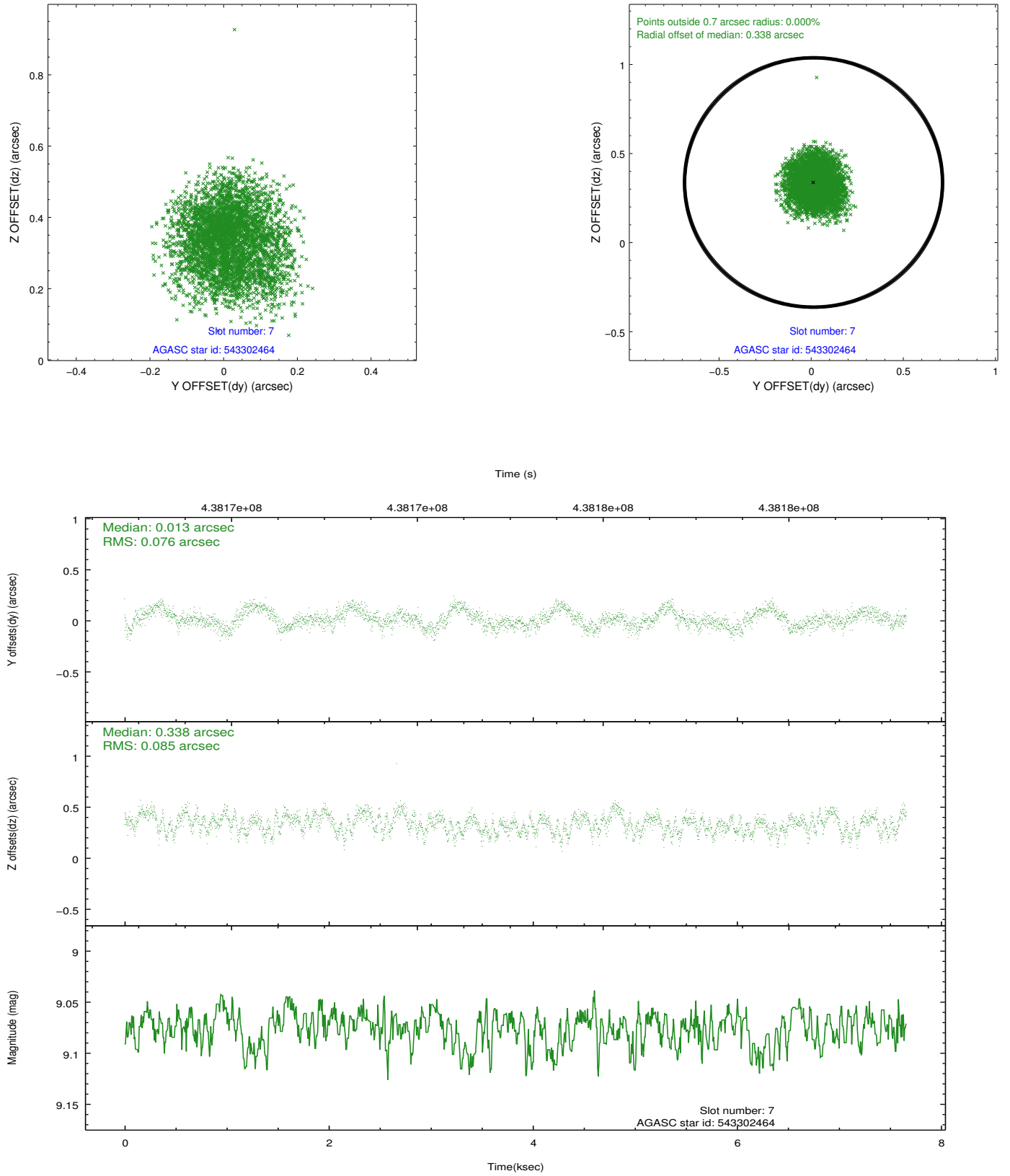
2.4.3 Slot 5



2.4.4 Slot 6

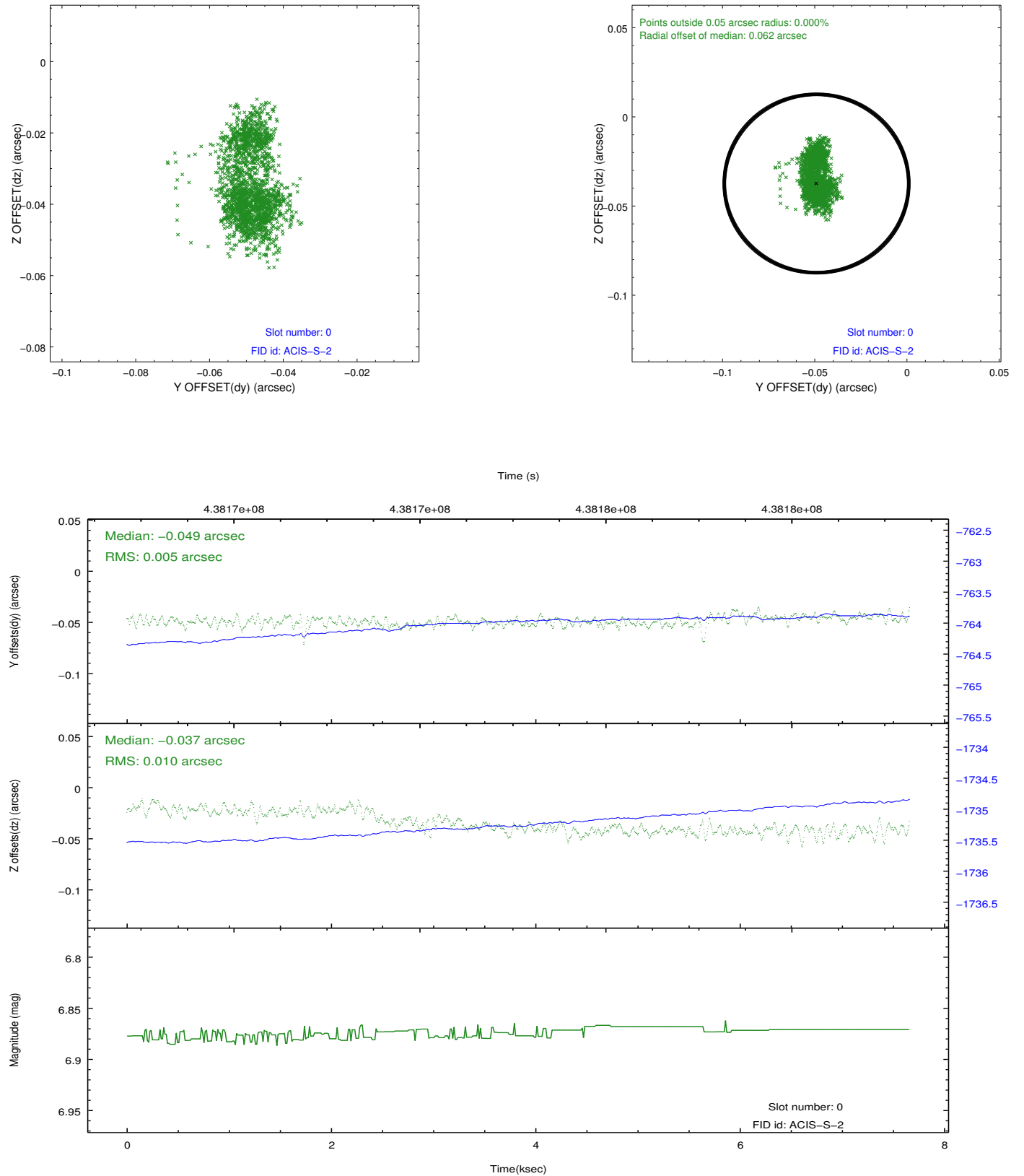


2.4.5 Slot 7

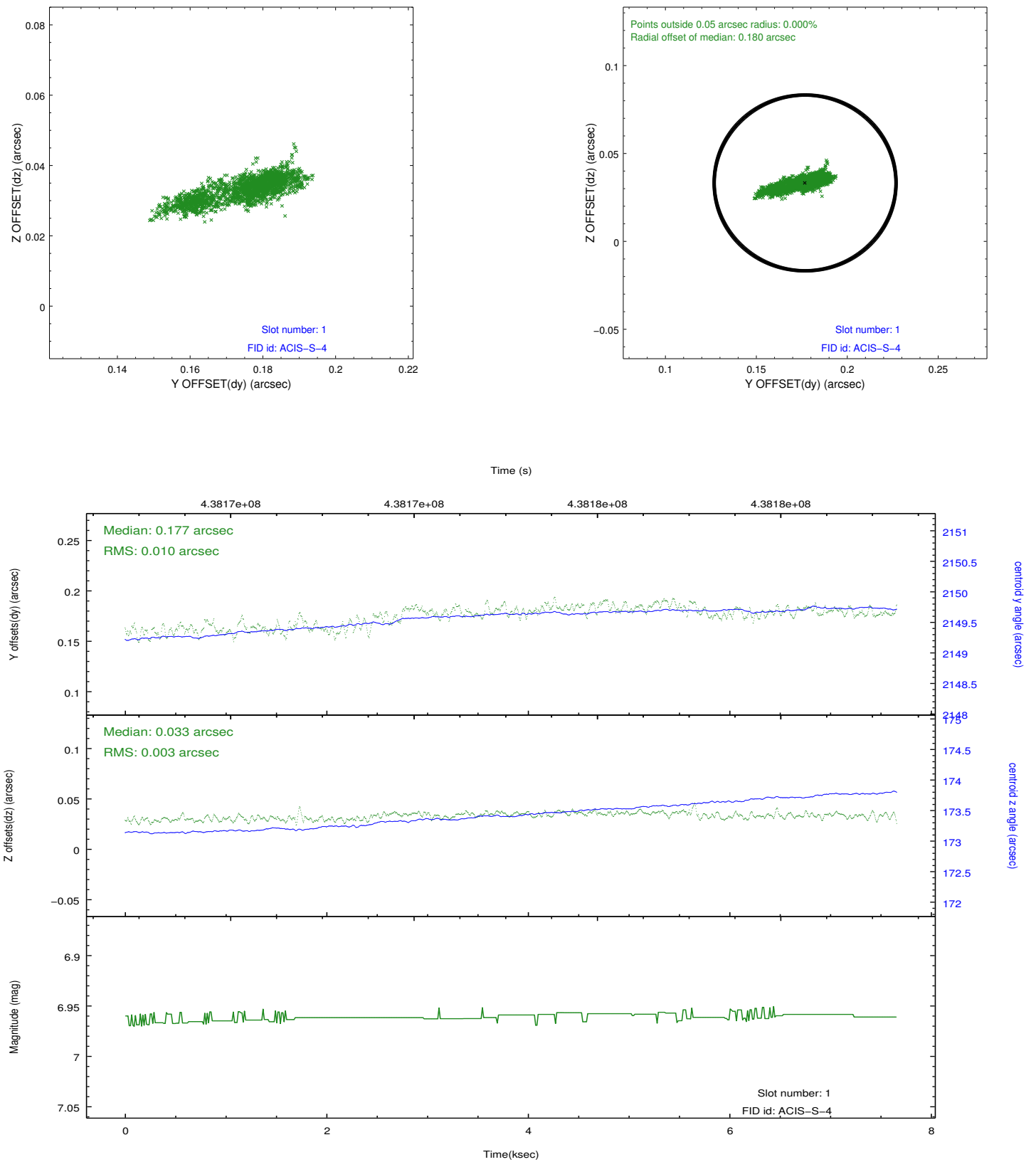


2.5 FID Slots

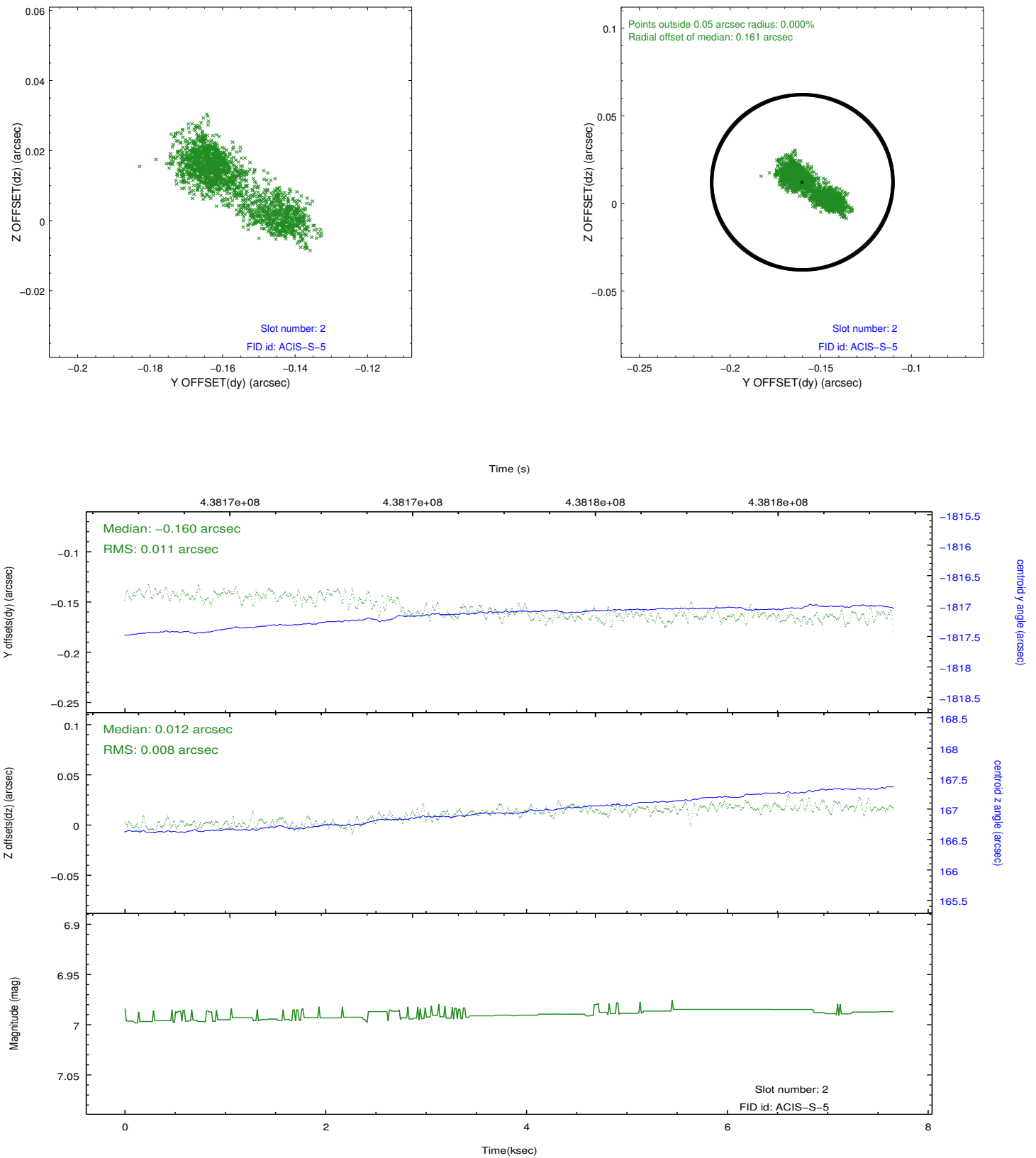
2.5.1 Slot 0



2.5.2 Slot 1



2.5.3 Slot 2



A Summary

A.1 Status

V&V Scientist	Jen Lauer
V&V Date (YYYY-MM-DD)	2012.02.28
V&V Edition	1
V&V Disposition and Status	OK
V&V Charge Time	7.4654645853043

A.2 Comments