

V&V Reference Report

L2 ASCDS Version : 8.4.3

Observation 12426 - L2 Version 2
Chandra X-Ray Center

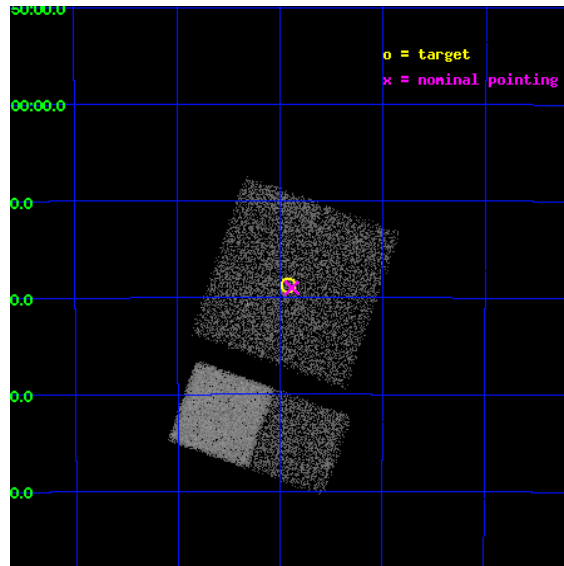
L2 Processing Date : Feb 18 2012

Contents

1	Front	2
2	OBI	3
2.1	OBI	3
2.1.1	Images	3
2.1.2	Bias	3
2.1.3	Parameters	4
2.1.4	Events	4
2.2	Compared Parameters	5
2.3	Aspect	6
2.4	Star Slots	9
2.4.1	Slot 3	9
2.4.2	Slot 4	10
2.4.3	Slot 5	11
2.4.4	Slot 6	12
2.4.5	Slot 7	13
2.5	FID Slots	14
2.5.1	Slot 0	14
2.5.2	Slot 1	15
2.5.3	Slot 2	16
A	Summary	17
A.1	Status	17
A.2	Comments	17

1 Front

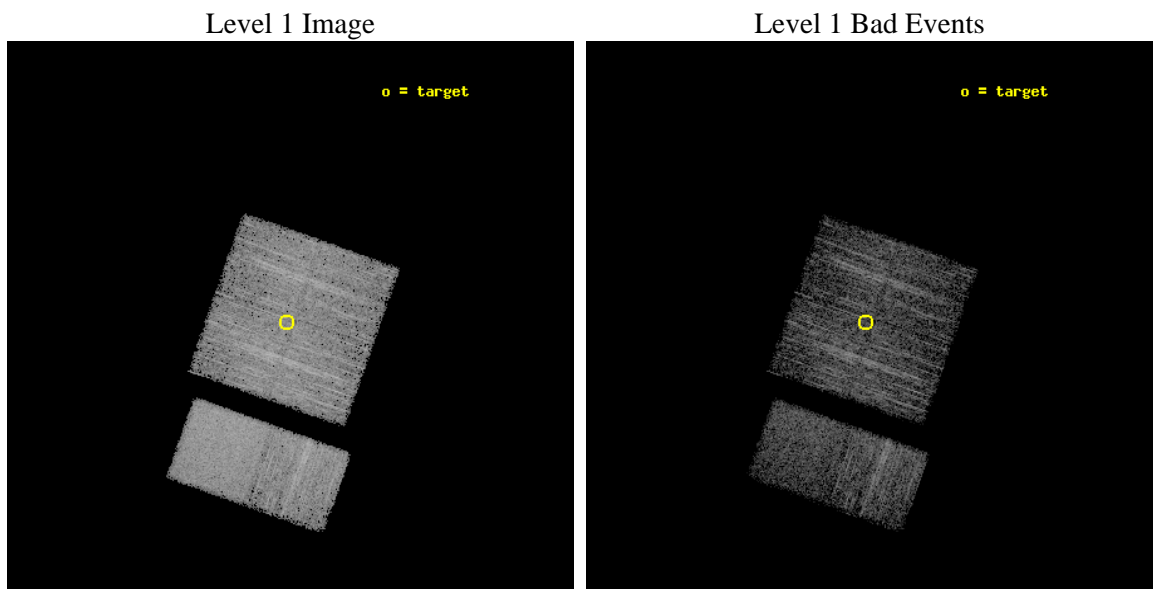
seq_num	401167	Sequence number
obs_id	12426	Observation id
title	The Nature of INTEGRAL Sources in the Galactic Plane	Proposal titl
observer	Dr. John Tomsick	Principal investigator
object	IGR J09189-4418	Source name
dtcycle	0	
cycle	P	events from which exps? Prim/Second/Both
ra_targ	139.730833	Observer's specified target RA [deg]
dec_targ	-44.312	Observer's specified target Dec [deg]
ra_nom	139.72143874353	Nominal RA [deg]
dec_nom	-44.316552281143	Nominal Dec [deg]
roll_nom	199.47461854289	Nominal Roll [deg]
revision	2	Processing version of data
ontime	5071.6602395773	Sum of GTIs [s]
livetime	5007.4398238366	Livetime [s]
ontime0	5071.5371195674	Sum of GTIs [s]
ontime1	5071.5781595707	Sum of GTIs [s]
ontime2	5071.619199574	Sum of GTIs [s]
ontime3	5071.6602395773	Sum of GTIs [s]
ontime6	5071.7423195839	Sum of GTIs [s]
ontime7	5071.7012795806	Sum of GTIs [s]
l2events	32080	Number of level 2 events



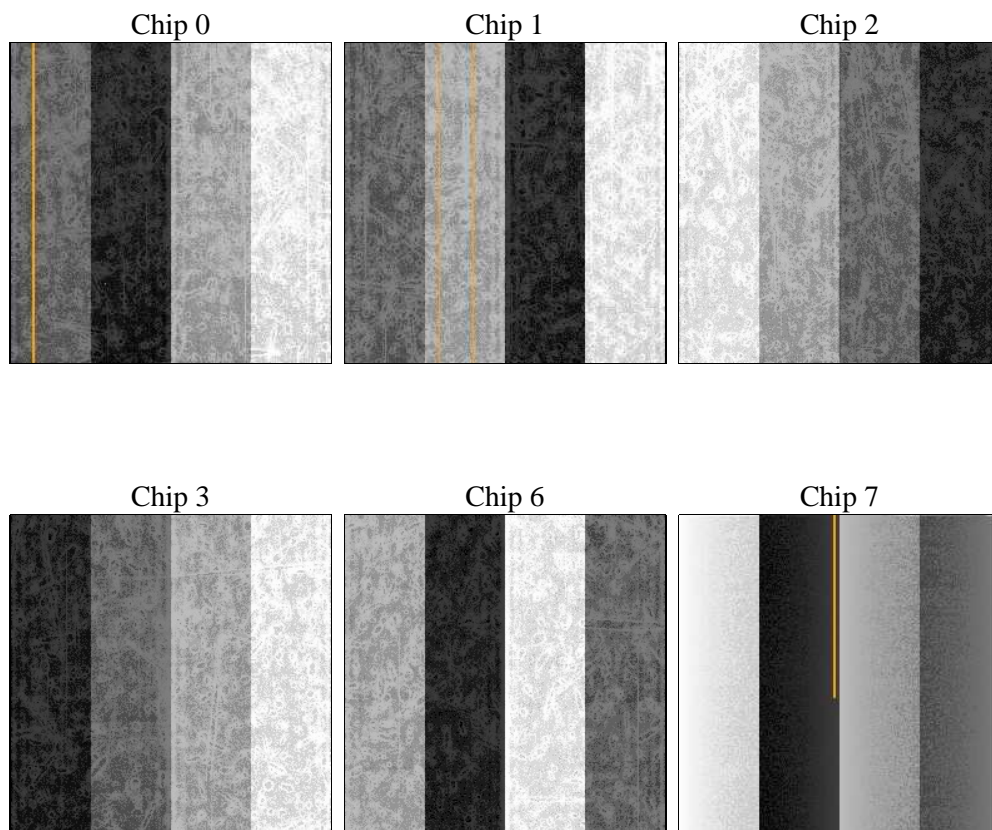
2 OBI

2.1 OBI

2.1.1 Images



2.1.2 Bias



2.1.3 Parameters

obi_num	0	Obi number	sched_exp_time	5011.303000	[s] Scheduled observation exposure time
ascdsver	8.4.3	Processing system revision	ontime	5071.6602395773	Sum of GTIs [s]
caldsver	4.4.8	 	ontime0	5071.5371195674	Sum of GTIs [s]
date	2012-02-18T05:12:26	Date and time of file creation	ontime1	5071.5781595707	Sum of GTIs [s]
revision	2	Processing version of data	ontime2	5071.619199574	Sum of GTIs [s]
			ontime3	5071.6602395773	Sum of GTIs [s]
			ontime6	5071.7423195839	Sum of GTIs [s]
			ontime7	5071.7012795806	Sum of GTIs [s]
			l1events	188371	Number of level 1 events

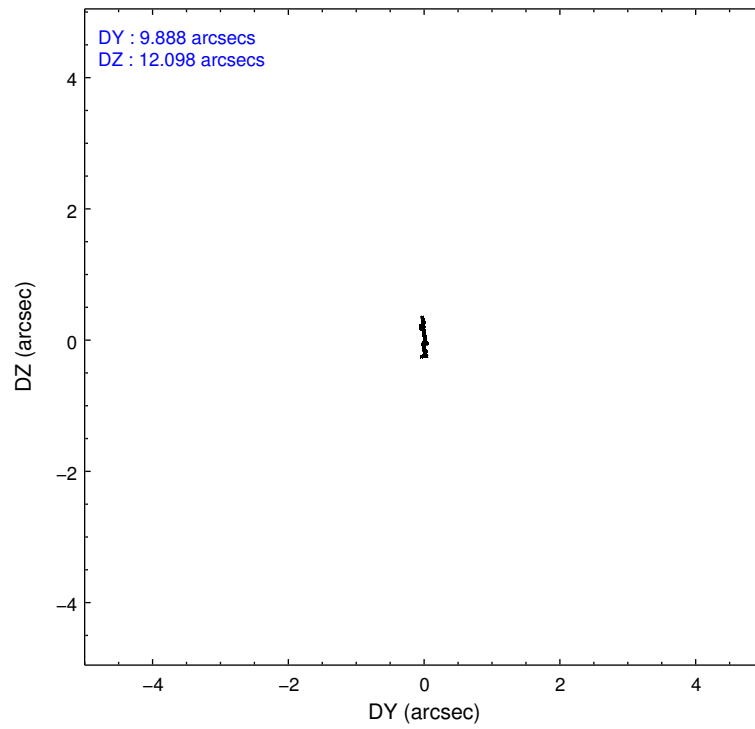
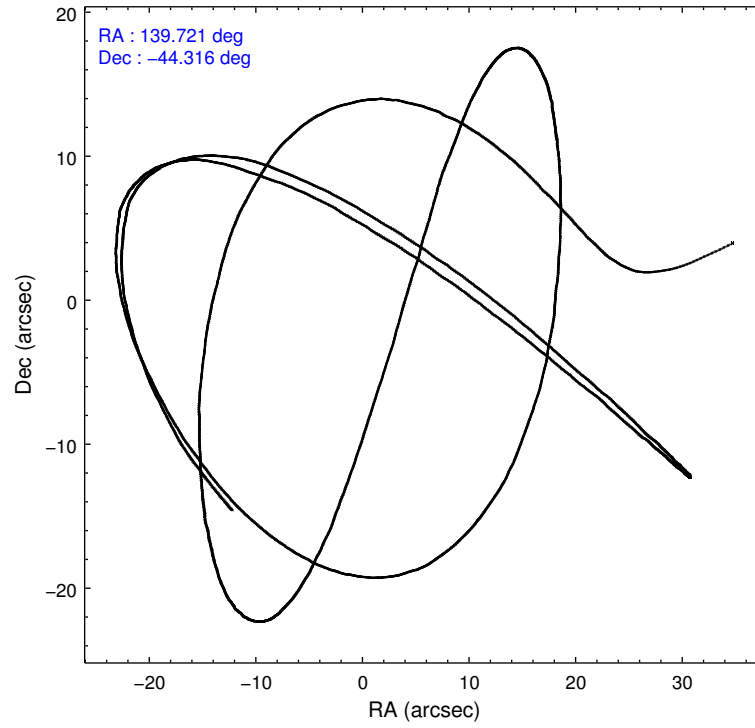
2.1.4 Events

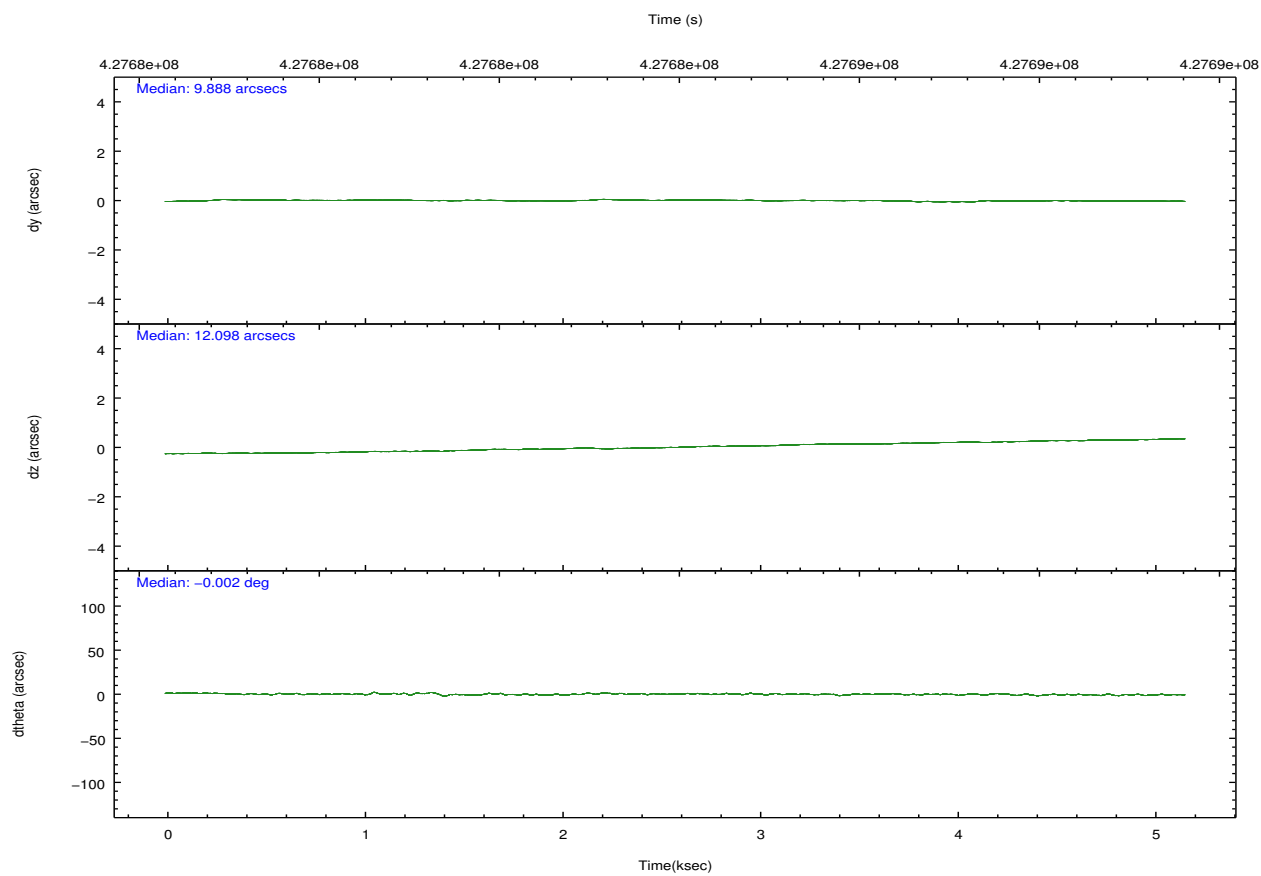
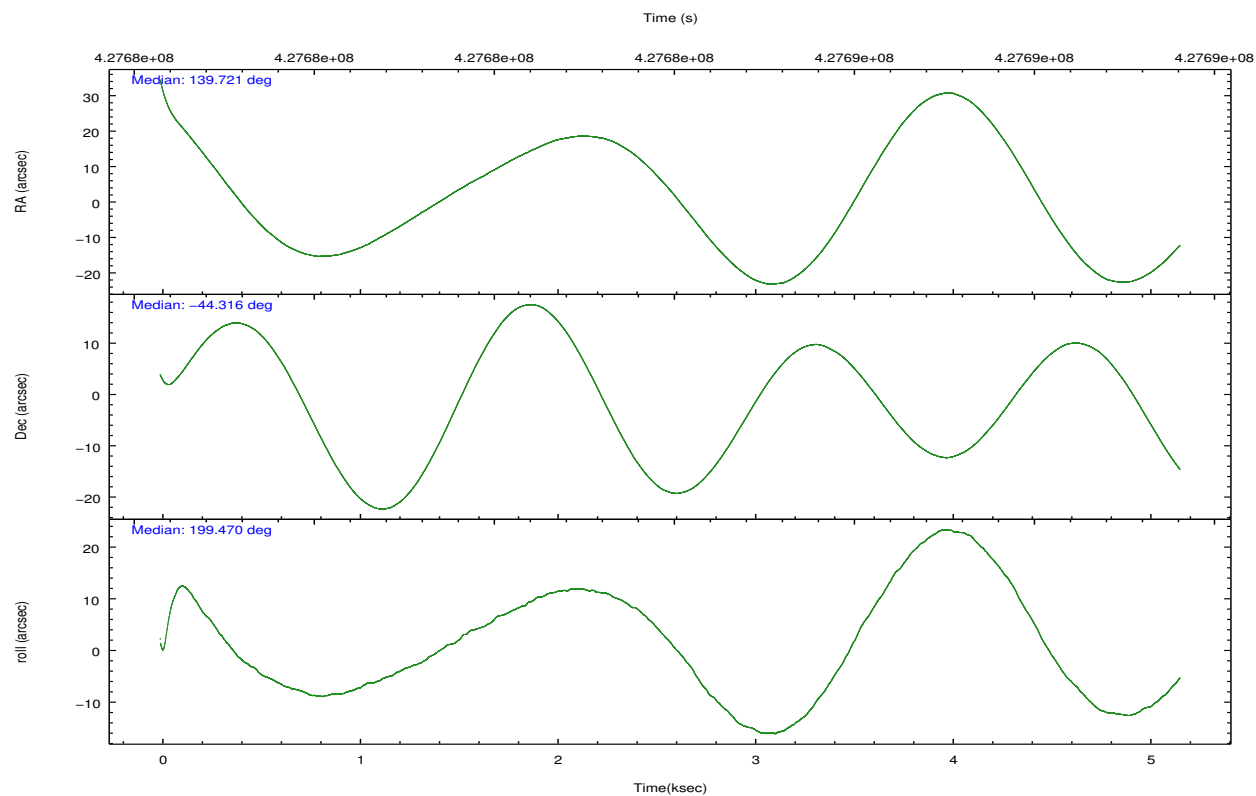
	ccd 0	ccd 1	ccd 2	ccd 3	ccd 6	ccd 7		ccd 0	ccd 1	ccd 2	ccd 3	ccd 6	ccd 7
level 1 events	26184	27916	31218	31389	31853	39811	grade 0 events	1139	1340	1108	1435	1258	1521
rejected events	22759	24080	27977	27725	28131	22364		4%	4%	3%	4%	3%	3%
rejected %	86%	86%	89%	88%	88%	56%	grade 1 events	20	13	21	26	19	61
								0%	0%	0%	0%	0%	0%
							grade 2 events	851	982	802	781	857	3575
								3%	3%	2%	2%	2%	8%
							grade 3 events	369	376	322	377	400	1478
								1%	1%	1%	1%	1%	3%
							grade 4 events	382	392	365	361	376	1429
								1%	1%	1%	1%	1%	3%
							grade 5 events	1303	1403	1222	1540	1516	4095
								4%	5%	3%	4%	4%	10%
							grade 6 events	686	747	645	716	833	9457
								2%	2%	2%	2%	2%	23%
							grade 7 events	21434	22663	26733	26153	26594	18195
								81%	81%	85%	83%	83%	45%

2.2 Compared Parameters

Parameter	Planned	Actual	Parameter	Planned	Actual
Instrument	ACIS	ACIS	Obspar format version number	7	7
Detector	ACIS-012367	ACIS-012367	Obspar file type	PREDICTED	ACTUAL
Grating	NONE	NONE	Obspar update status	NONE	UPDATED
Data mode	FAINT	FAINT	CCD I0 on	Y	Y
Observation mode	POINTING	POINTING	CCD I1 on	Y	Y
[deg] Pointing RA	139.746624	139.7214387435311	CCD I2 on	Y	Y
[deg] Pointing Dec	-44.295868	-44.3165522811429	CCD I3 on	Y	Y
[deg] Pointing Roll	199.283583	199.4746185428889	CCD S0 on	N	N
[mm] SIM focus pos	-0.782348	-0.7809083437167272	CCD S1 on	N	N
[mm] SIM defocus	0	0.001439871863259334	CCD S2 on	O1	Y
[mm] SIM translation stage pos	-233.592463	-233.5874344608287	CCD S3 on	O2	Y
[mm] SIM translation stage offset	0	-0.005018542100998502	CCD S4 on	N	N
[s] Observation start time (MET)	427682537.184000	427681322.85601	CCD S5 on	N	N
Observation start date	2011-07-22T00:41:11	2011-07-22T00:22:02	Number of optional ACIS chips dropped	0	0
[s] Observation end time (MET)	427687548.184000	427687784.96885	On-chip summing requested	N	N
Observation end date	2011-07-22T02:04:42	2011-07-22T02:09:44	Subarray requested	NONE	NONE
Read mode	TIMED	TIMED	Alternating exposures requested	N	N
			[s] Primary exposure time	0.000000	3.2

2.3 Aspect



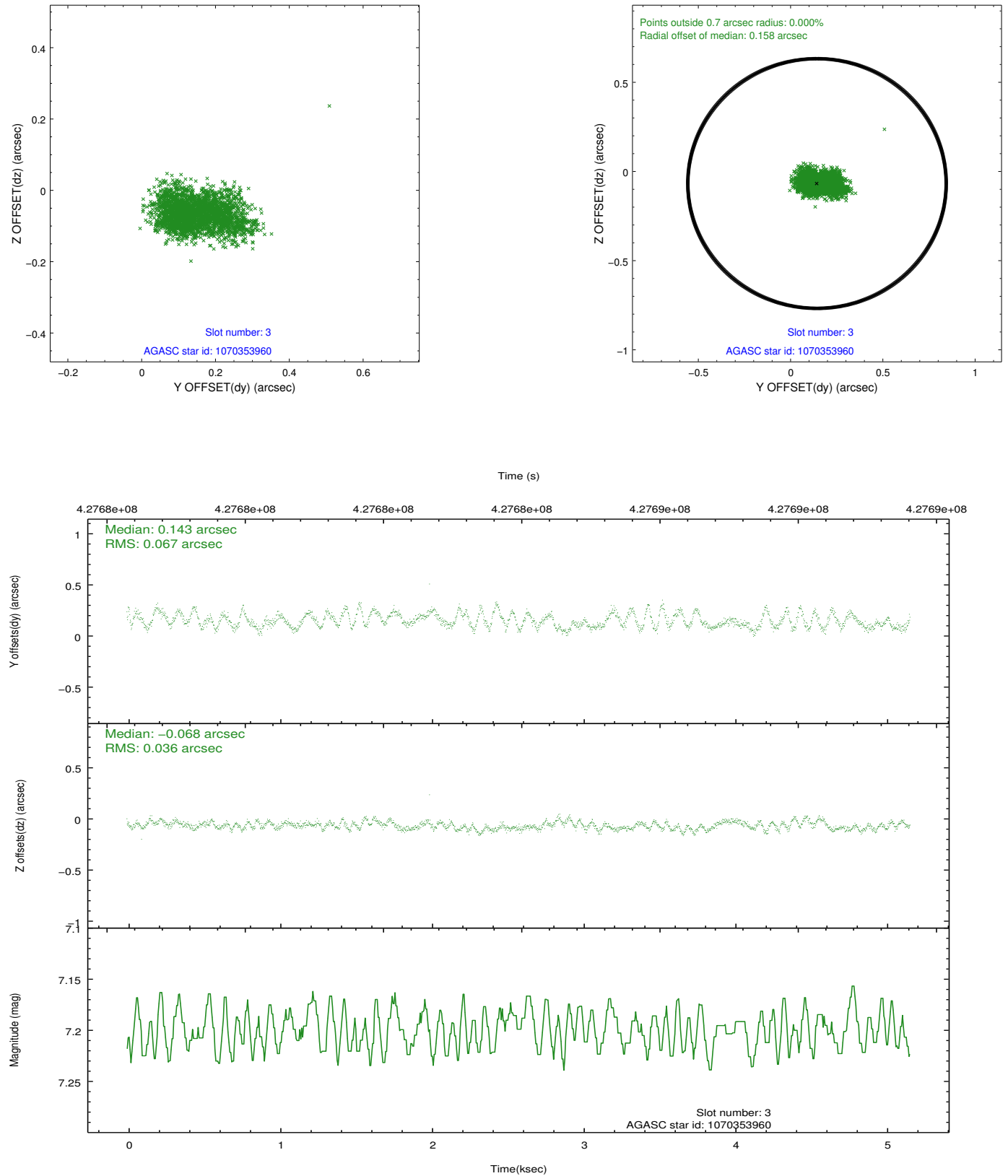


Slot Statistics

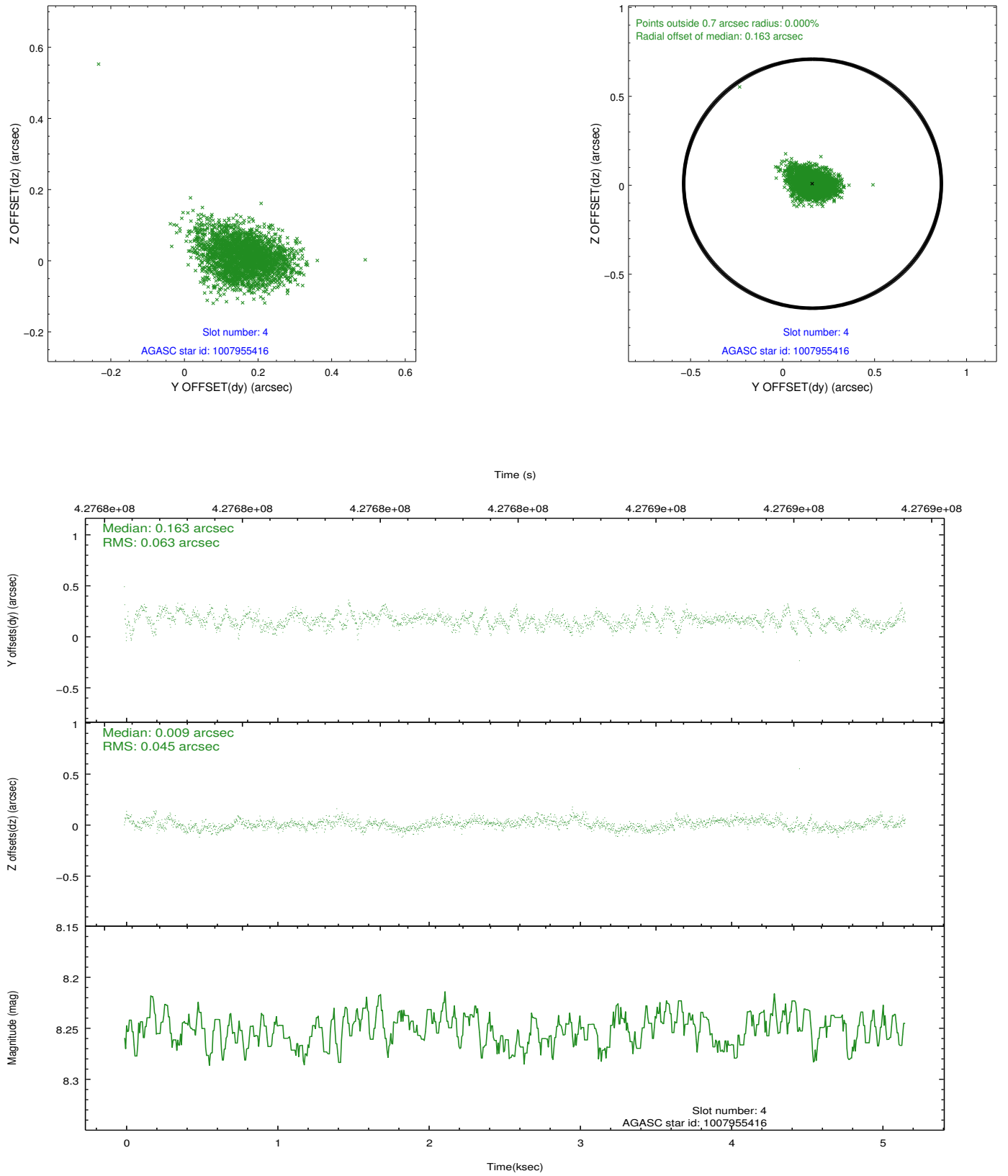
slot	status	id	mag	n_pts	med_dy	med_dz	dr1	dr2	ra	dec	mean_y	mean_z
0	FID	ACIS-I-1	7.10	1259	0.046	-0.098	0.010	0.020	0.000000	0.000000	929.75	-835.75
1	FID	ACIS-I-4	7.02	1259	0.194	0.069	0.010	0.017	0.000000	0.000000	2150.62	1063.63
2	FID	ACIS-I-5	7.08	1260	-0.339	0.099	0.010	0.017	0.000000	0.000000	-1817.11	1062.88
3	GUIDE	1070353960	7.20	2519	0.143	-0.068	0.080	0.133	139.241592	-45.011973	2065.63	2014.11
4	GUIDE	1007955416	8.25	2518	0.163	0.009	0.080	0.136	138.652251	-43.945054	2266.98	-2108.28
5	GUIDE	1009656424	8.41	2518	-0.070	0.057	0.081	0.130	140.138253	-44.283156	-966.35	292.65
6	GUIDE	1009657408	8.56	2519	-0.130	0.054	0.082	0.135	140.615956	-44.102199	-2348.55	96.77
7	GUIDE	1070335720	7.02	2518	-0.115	-0.057	0.080	0.119	139.715245	-45.007960	920.45	2394.77

2.4 Star Slots

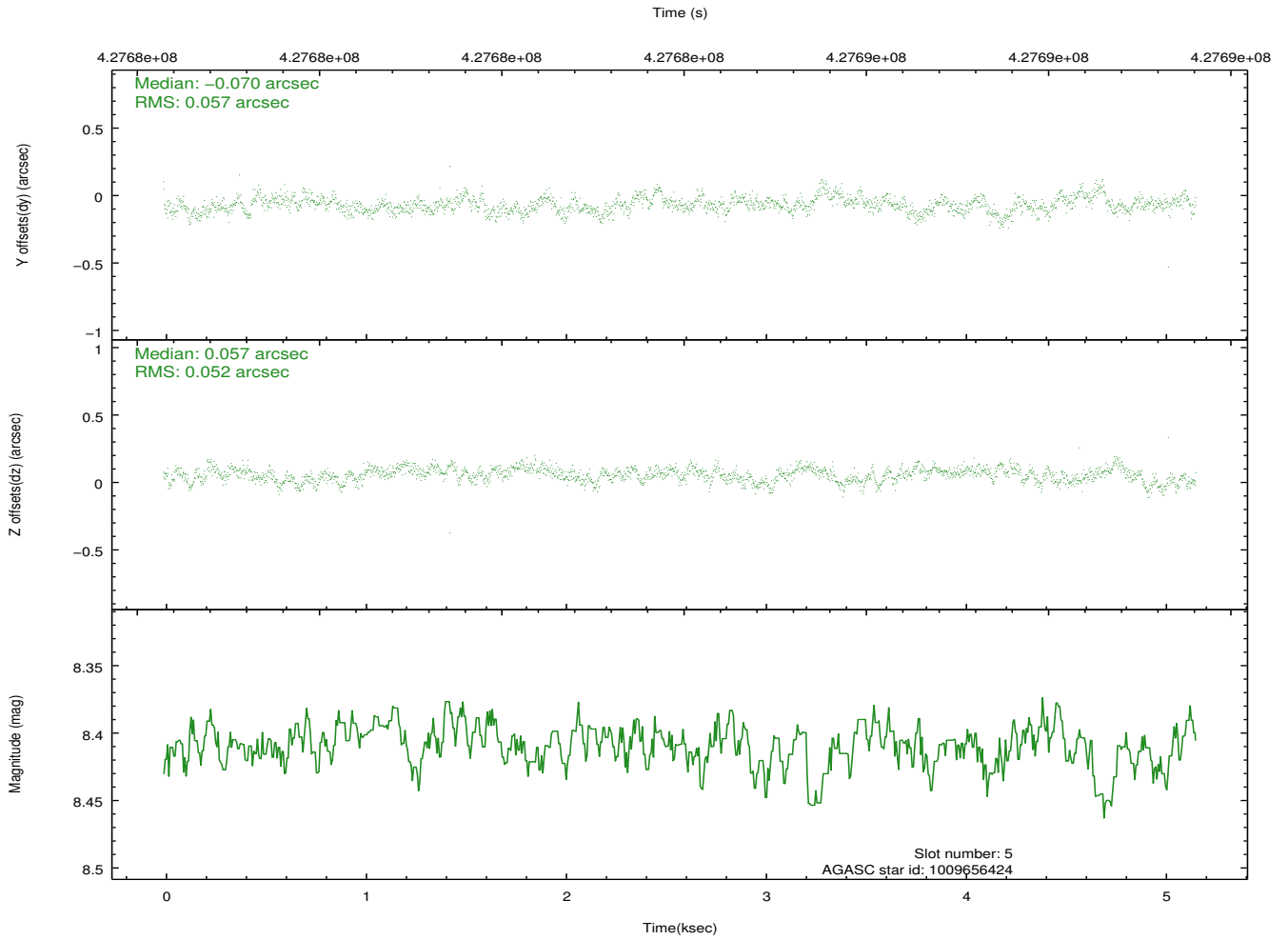
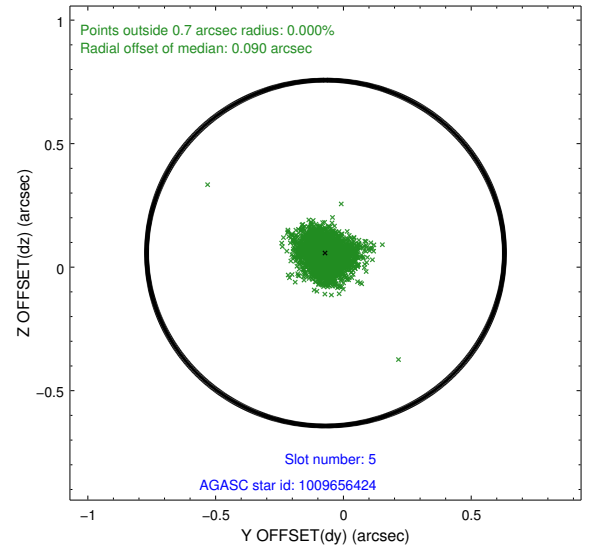
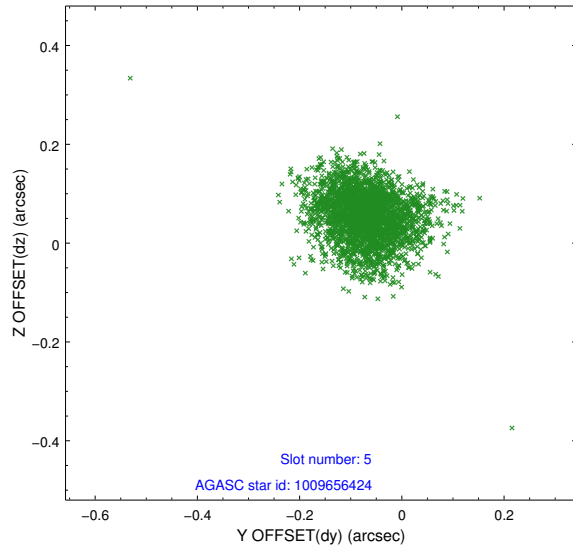
2.4.1 Slot 3



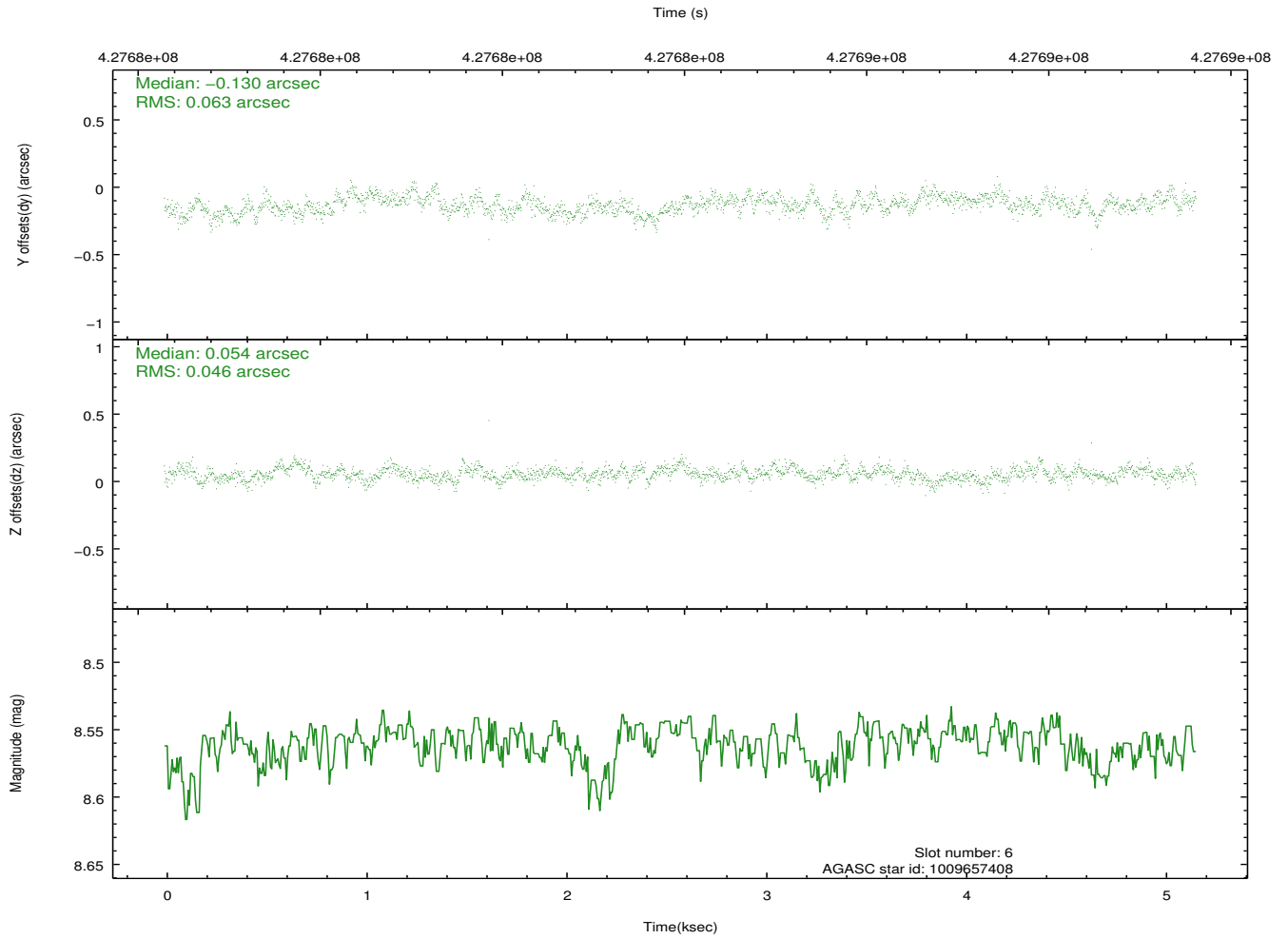
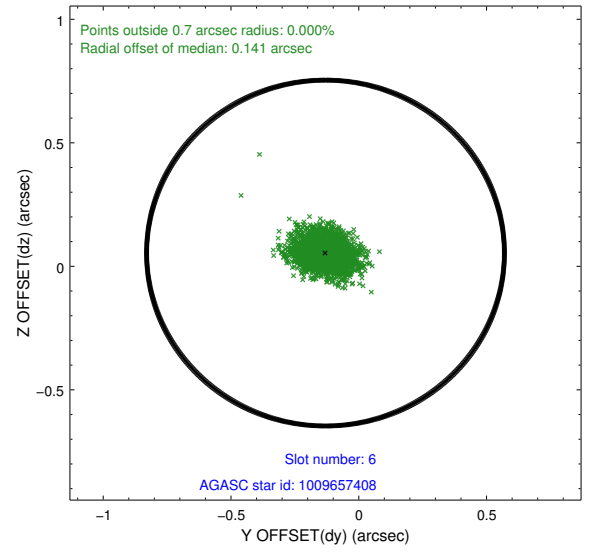
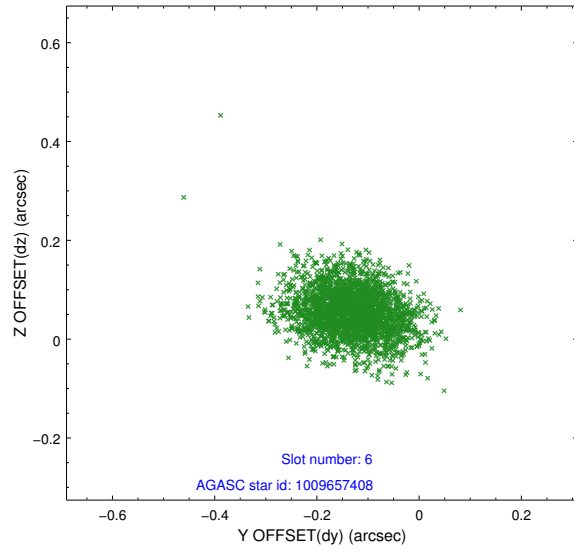
2.4.2 Slot 4



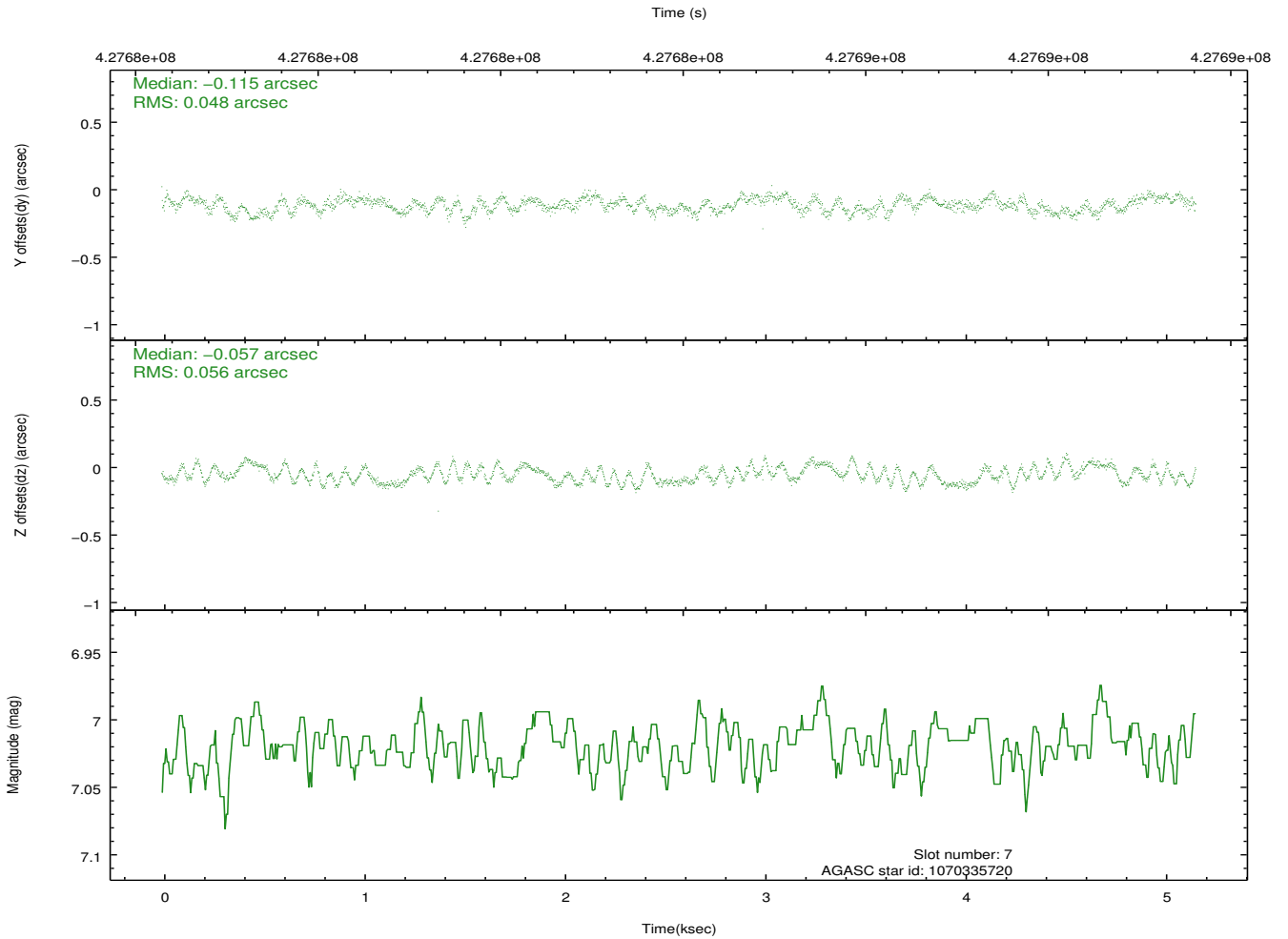
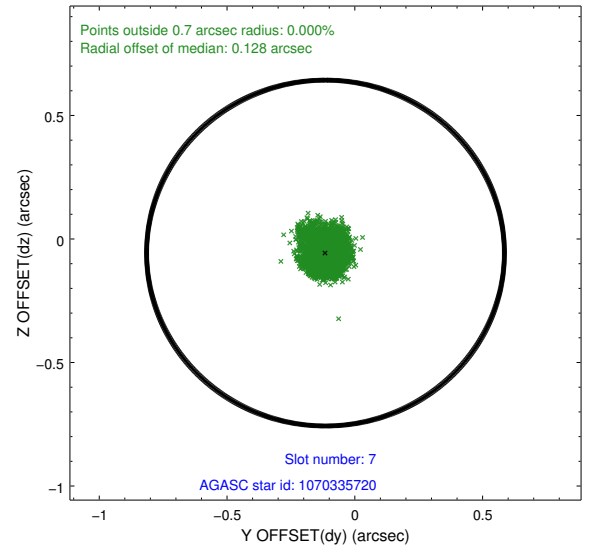
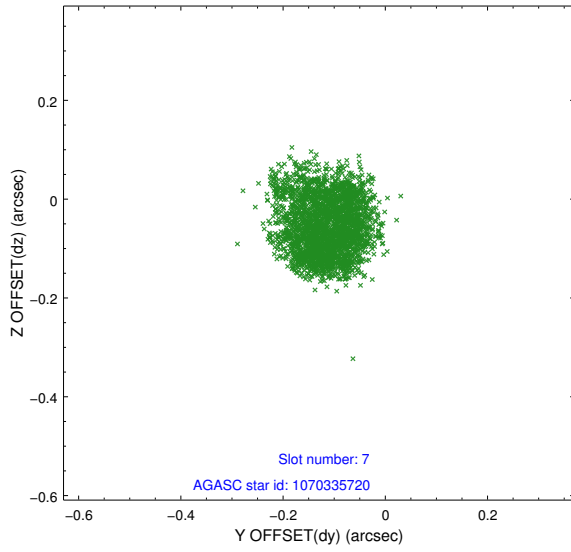
2.4.3 Slot 5



2.4.4 Slot 6

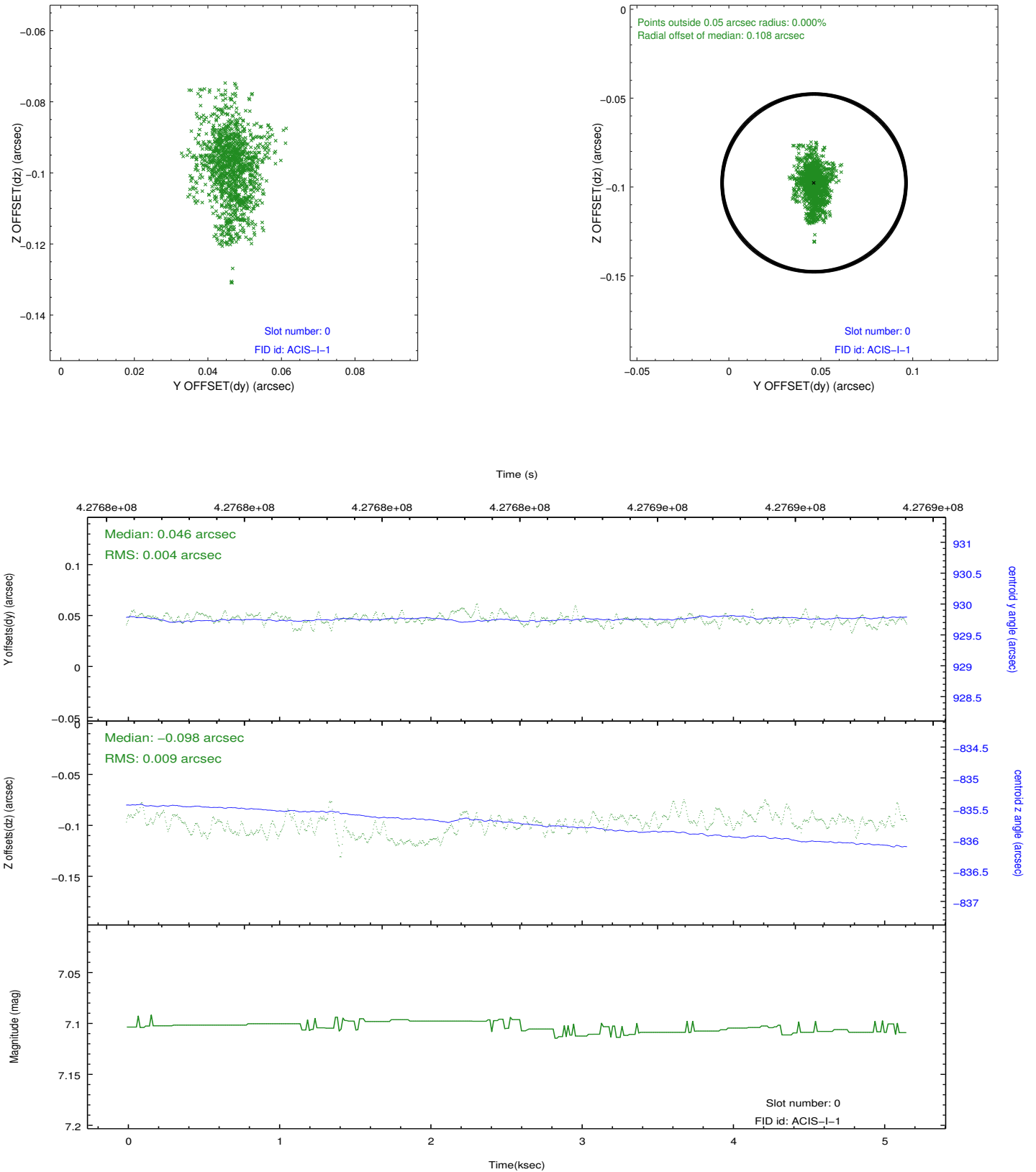


2.4.5 Slot 7

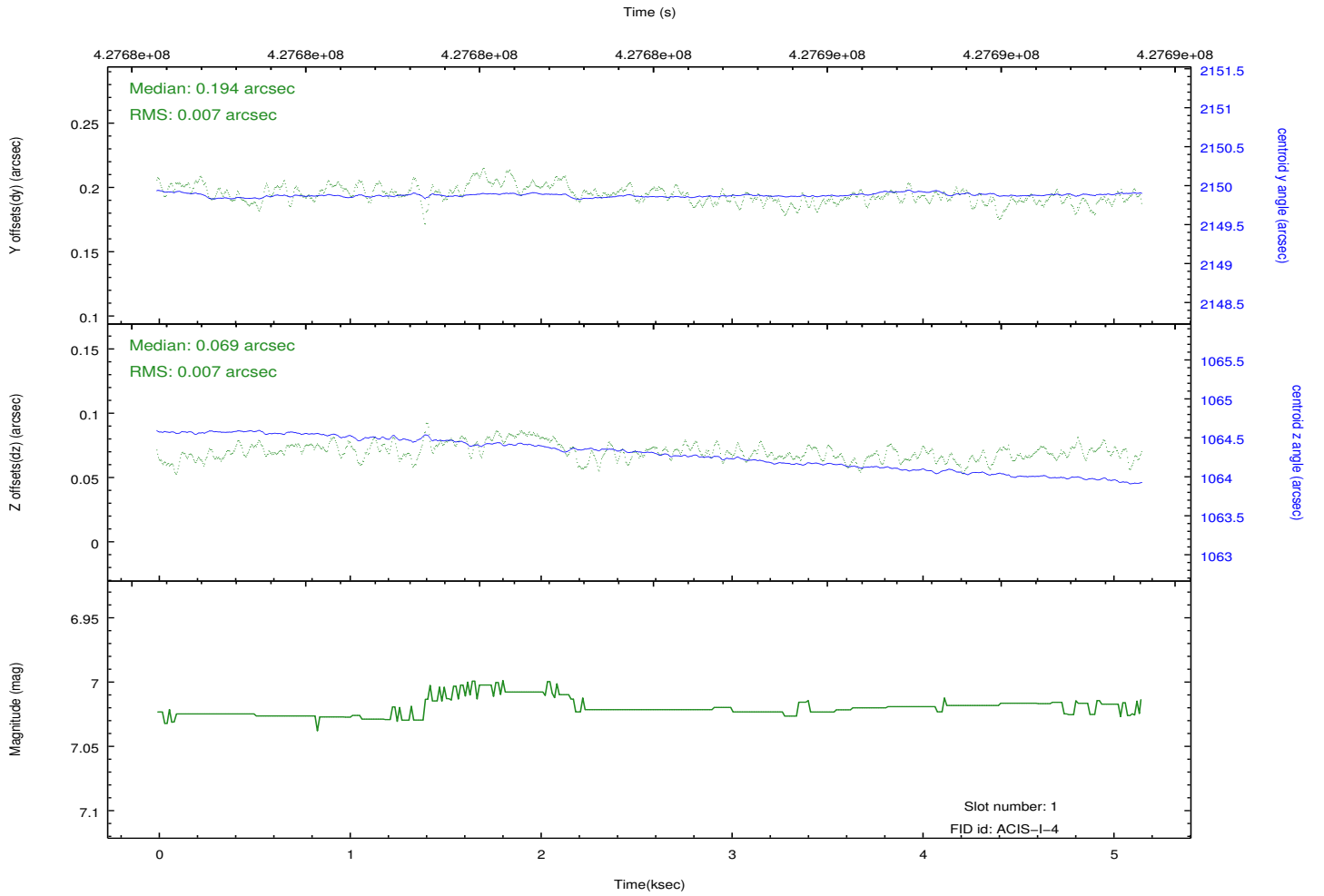
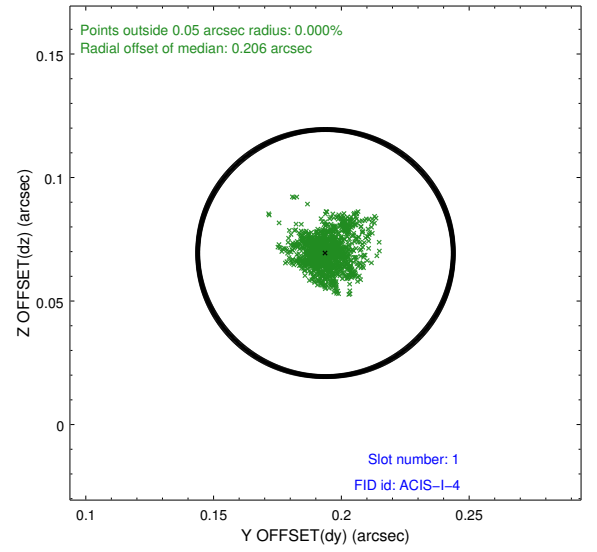
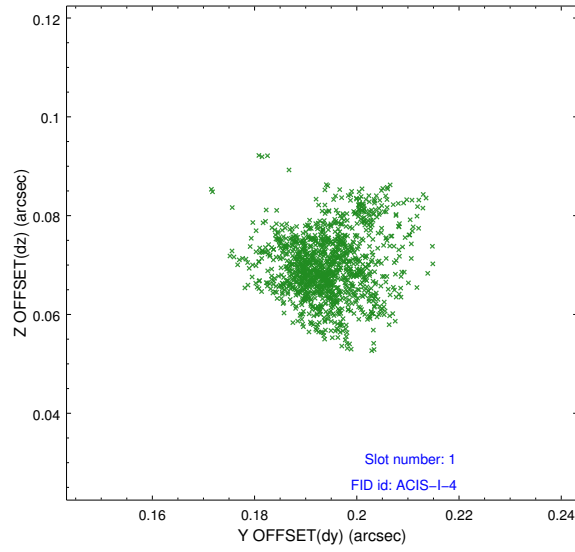


2.5 FID Slots

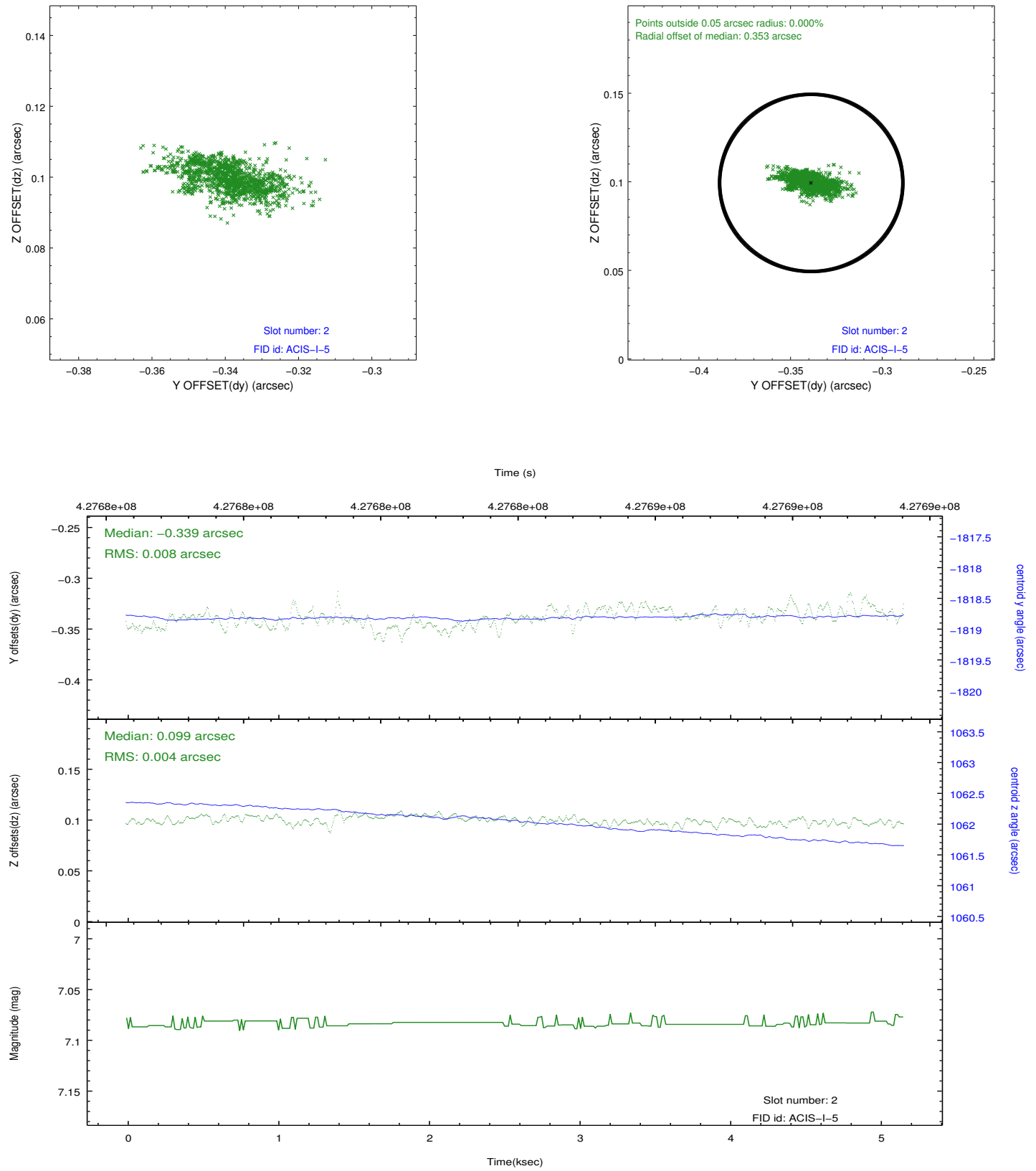
2.5.1 Slot 0



2.5.2 Slot 1



2.5.3 Slot 2



A Summary

A.1 Status

V&V Scientist	Jen Lauer
V&V Date (YYYY-MM-DD)	2012.02.21
V&V Edition	1
V&V Disposition and Status	OK
V&V Charge Time	5.0716602365375

A.2 Comments