

V&V Reference Report

L2 ASCDS Version : 8.4.5

Observation 11496 - L2 Version 2
Chandra X-Ray Center

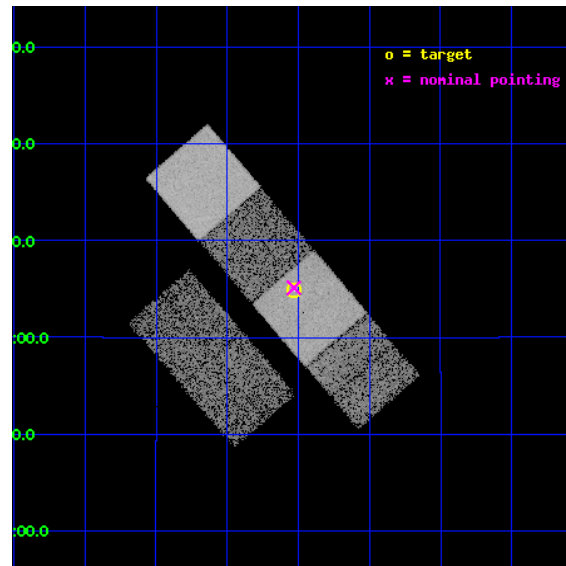
L2 Processing Date : Jun 19 2012

Contents

1	Front	2
2	OBI	3
2.1	OBI	3
2.1.1	Images	3
2.1.2	Bias	3
2.1.3	Parameters	4
2.1.4	Events	4
2.2	Compared Parameters	5
2.3	Aspect	6
2.4	Star Slots	9
2.4.1	Slot 3	9
2.4.2	Slot 4	10
2.4.3	Slot 5	11
2.4.4	Slot 6	12
2.4.5	Slot 7	13
2.5	FID Slots	14
2.5.1	Slot 0	14
2.5.2	Slot 1	15
2.5.3	Slot 2	16
A	Summary	17
A.1	Status	17
A.2	Comments	17

1 Front

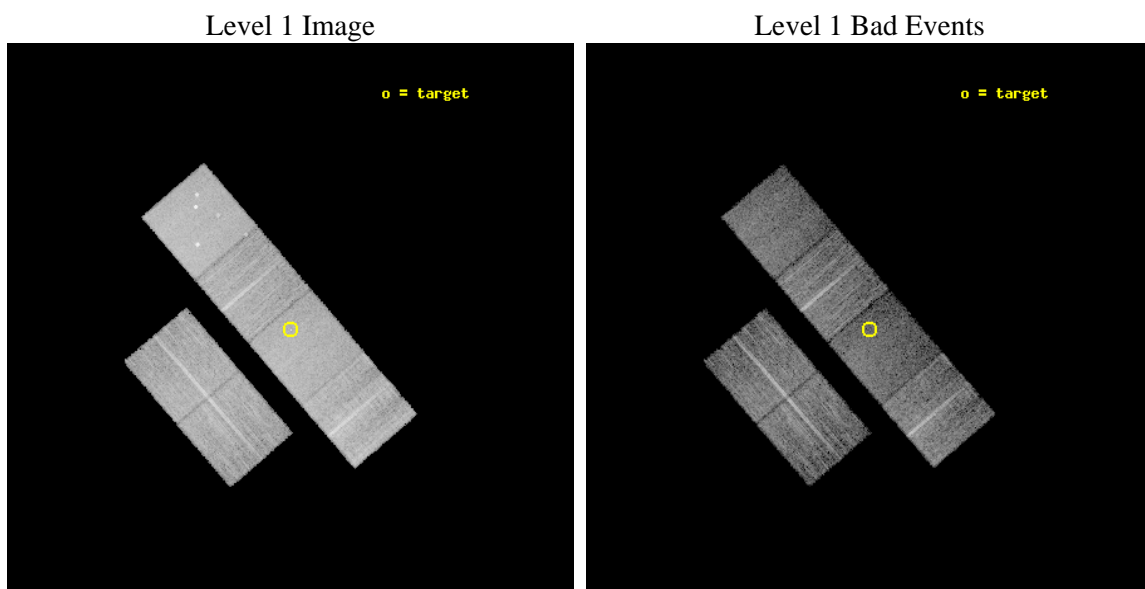
seq_num	702082	Sequence number
obs_id	11496	Observation id
title	Hunting for Intrinsically X-ray Weak Quasars: The Case of PHL 1811 Analogs	Proposal title
observer	Prof. William Brandt	Principal investigator
object	SDSS J1618+0704	Source name
dtcycle	0	
cycle	P	events from which exps? Prim/Second/Both
ra_targ	244.507083	Observer's specified target RA [deg]
dec_targ	7.080611	Observer's specified target Dec [deg]
ra_nom	244.50780072326	Nominal RA [deg]
dec_nom	7.0853694550299	Nominal Dec [deg]
roll_nom	49.325329683645	Nominal Roll [deg]
revision	2	Processing version of data
ontime	7775.9999710917	Sum of GTIs [s]
livetime	7677.5355773127	Livetime [s]
ontime2	7775.9999710917	Sum of GTIs [s]
ontime3	7775.9999710917	Sum of GTIs [s]
ontime5	7775.9999710917	Sum of GTIs [s]
ontime6	7775.9999710917	Sum of GTIs [s]
ontime7	7775.9999710917	Sum of GTIs [s]
ontime8	7775.9999710917	Sum of GTIs [s]
l2events	109382	Number of level 2 events



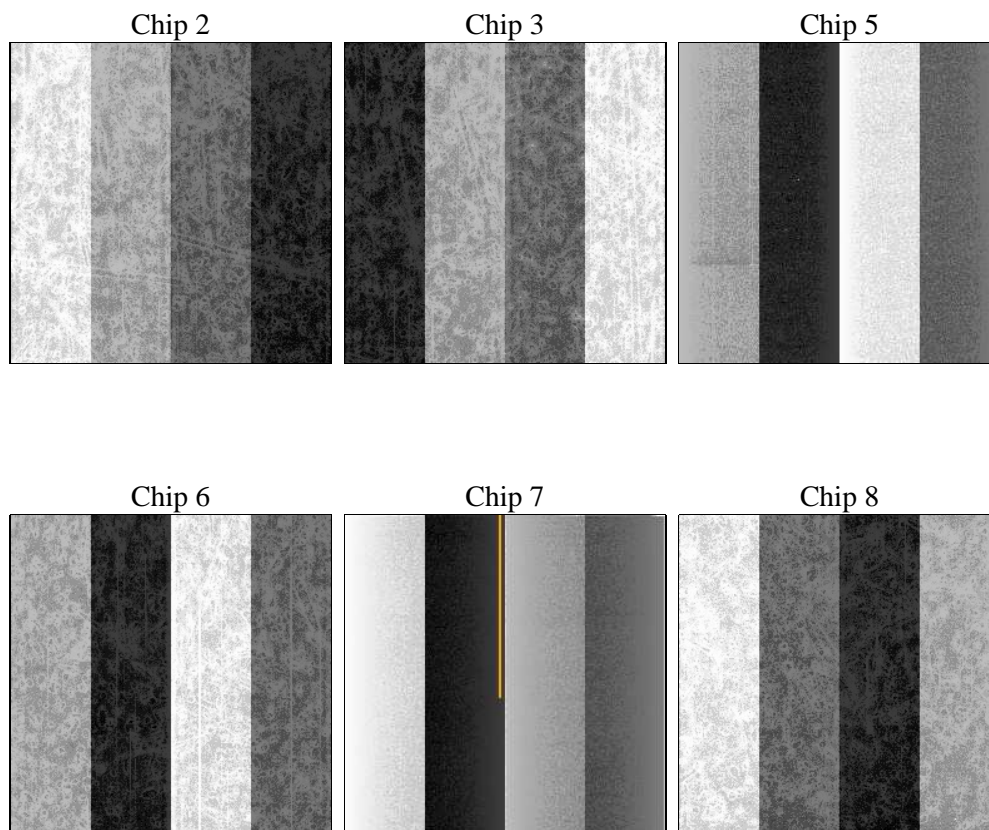
2 OBI

2.1 OBI

2.1.1 Images



2.1.2 Bias



2.1.3 Parameters

obi_num	0	Obi number	sched_exp_time	7600.000000	[s] Scheduled observation exposure time
ascdsver	8.4.5	Processing system revision	ontime	7775.9999710917	Sum of GTIs [s]
caldsver	4.4.10	 	ontime2	7775.9999710917	Sum of GTIs [s]
date	2012-06-19T07:03:35	Date and time of file creation	ontime3	7775.9999710917	Sum of GTIs [s]
revision	2	Processing version of data	ontime5	7775.9999710917	Sum of GTIs [s]
			ontime6	7775.9999710917	Sum of GTIs [s]
			ontime7	7775.9999710917	Sum of GTIs [s]
			ontime8	7775.9999710917	Sum of GTIs [s]
			l1events	521962	Number of level 1 events

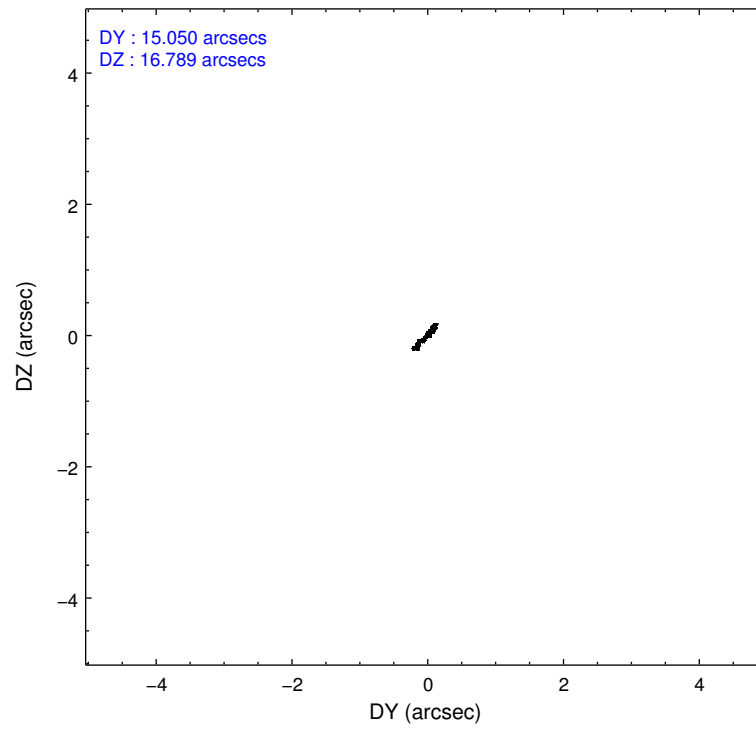
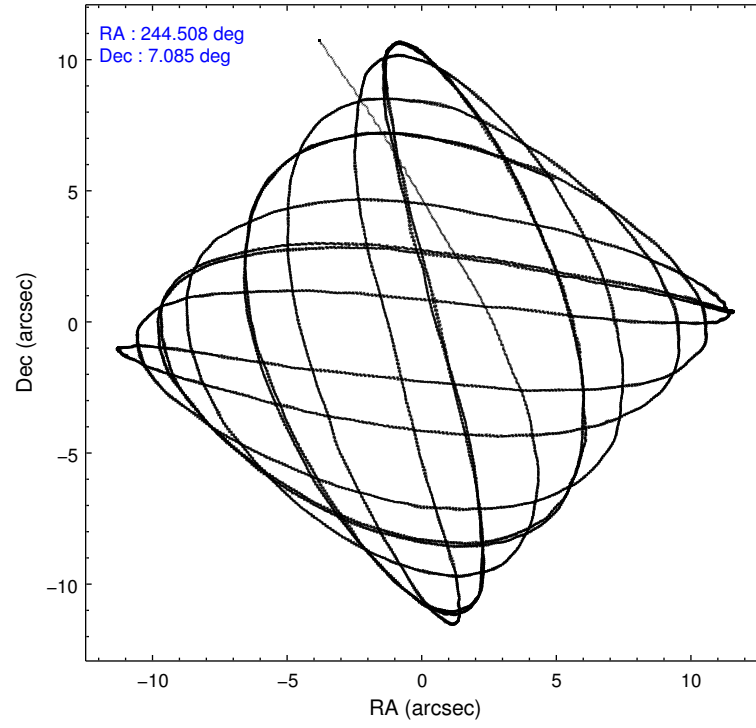
2.1.4 Events

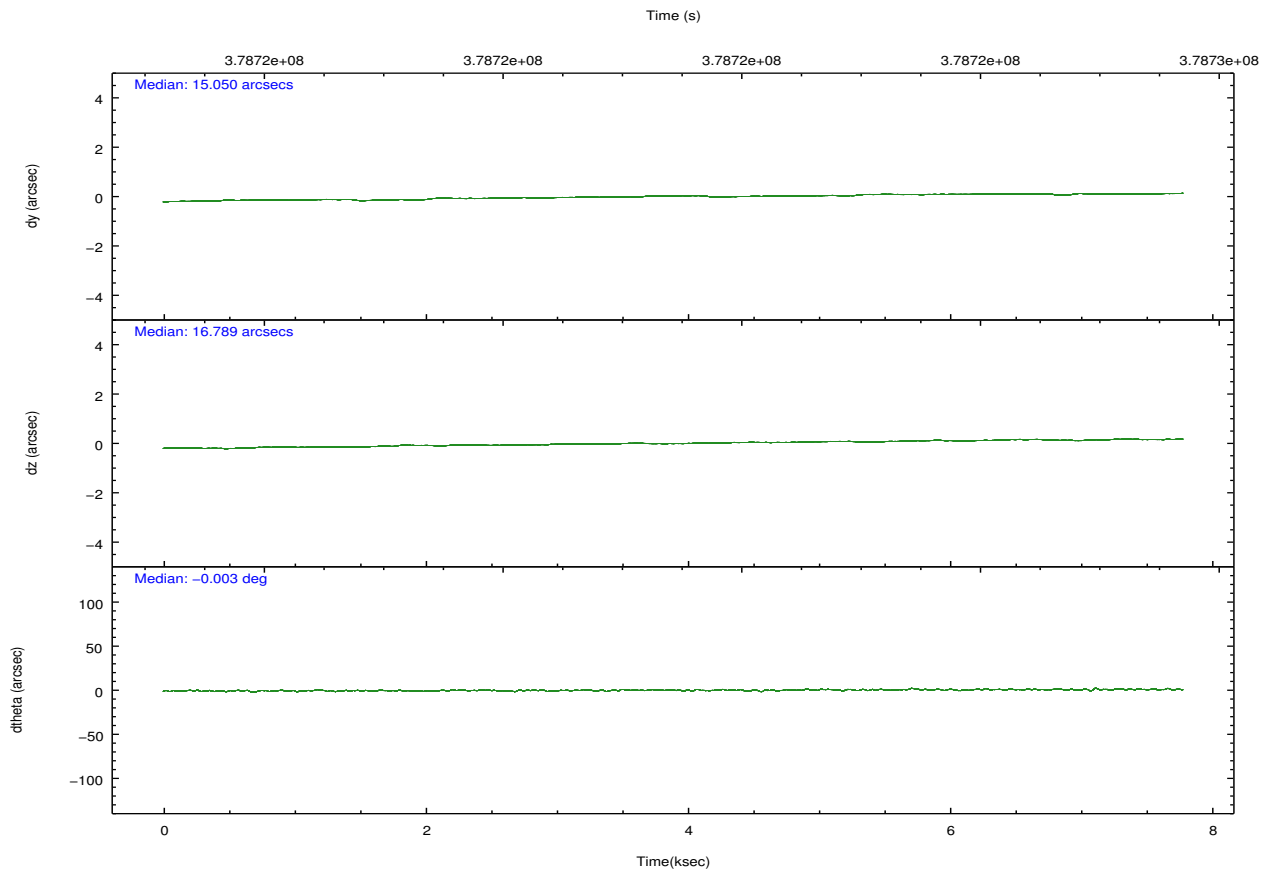
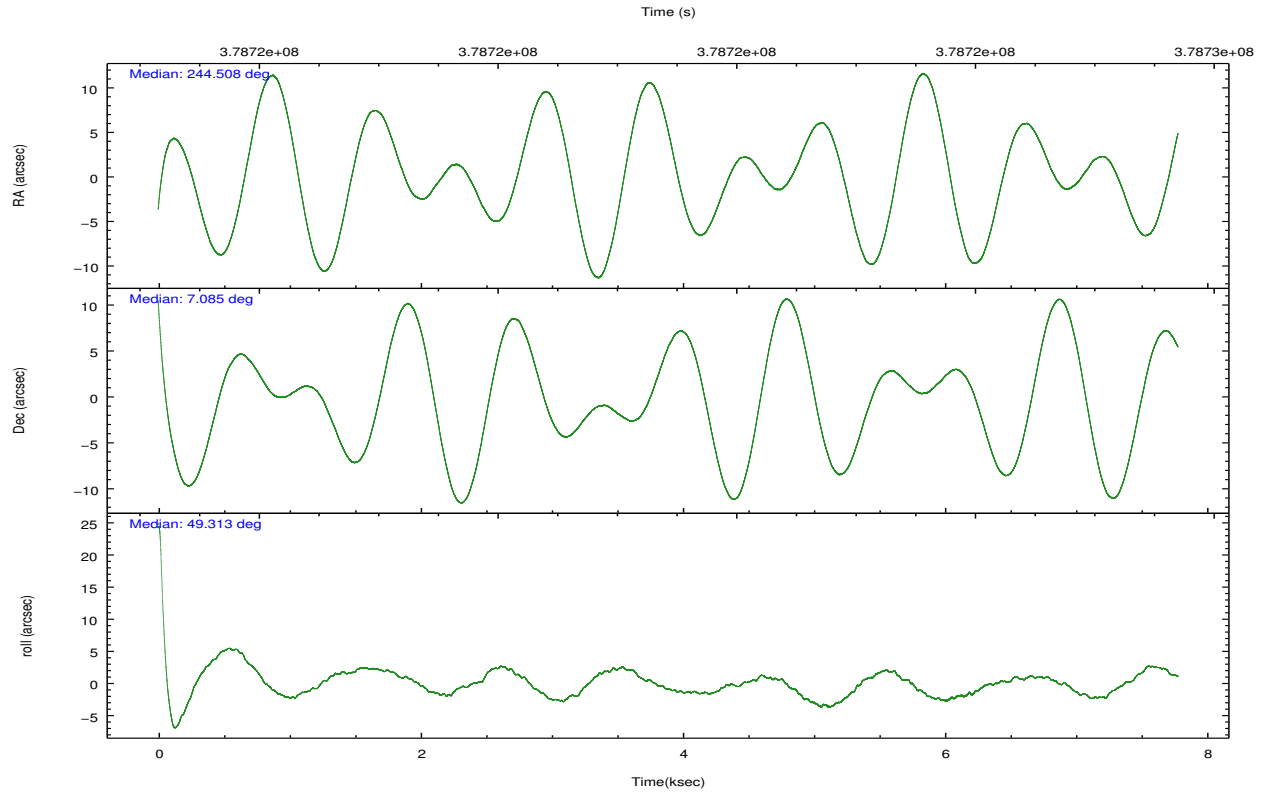
	ccd 2	ccd 3	ccd 5	ccd 6	ccd 7	ccd 8		ccd 2	ccd 3	ccd 5	ccd 6	ccd 7	ccd 8
level 1 events	77603	72340	109787	76274	87915	98043	grade 0 events	2816	2687	6936	3073	4096	8008
rejected events	70483	65692	58677	68677	50407	74840		3%	3%	6%	4%	4%	8%
rejected %	90%	90%	53%	90%	57%	76%	grade 1 events	52	45	256	42	122	94
								0%	0%	0%	0%	0%	0%
							grade 2 events	1898	1621	16566	1844	8664	5825
								2%	2%	15%	2%	9%	5%
							grade 3 events	796	833	2178	816	3690	2549
								1%	1%	1%	1%	4%	2%
							grade 4 events	805	778	2114	829	3615	2367
								1%	1%	1%	1%	4%	2%
							grade 5 events	2662	3053	8141	3106	9187	4528
								3%	4%	7%	4%	10%	4%
							grade 6 events	1497	1353	28241	1753	20922	6791
								1%	1%	25%	2%	23%	6%
							grade 7 events	67077	61970	45355	64811	37619	67881
								86%	85%	41%	84%	42%	69%

2.2 Compared Parameters

Parameter	Planned	Actual	Parameter	Planned	Actual
Instrument	ACIS	ACIS	Obspar format version number	7	7
Detector	ACIS-235678	ACIS-235678	Obspar file type	PREDICTED	ACTUAL
Grating	NONE	NONE	Obspar update status	NONE	UPDATED
Data mode	FAINT	FAINT	CCD I0 on	N	N
Observation mode	POINTING	POINTING	CCD I1 on	N	N
[deg] Pointing RA	244.503114	244.507800723256	CCD I2 on	O2	Y
[deg] Pointing Dec	7.058465	7.0853694550299	CCD I3 on	O1	Y
[deg] Pointing Roll	49.169241	49.32532968364513	CCD S0 on	N	N
[mm] SIM focus pos	-0.684267	-0.6828225247311905	CCD S1 on	Y	Y
[mm] SIM defocus	0	0.001444936568705701	CCD S2 on	Y	Y
[mm] SIM translation stage pos	-190.132523	-190.1400660498719	CCD S3 on	Y	Y
[mm] SIM translation stage offset	0	0.00754346686406393	CCD S4 on	Y	Y
[s] Observation start time (MET)	378717708.184000	378716266.08797	CCD S5 on	N	N
Observation start date	2010-01-01T07:20:42	2010-01-01T06:57:46	Number of optional ACIS chips dropped	0	0
[s] Observation end time (MET)	378725308.184000	378726313.13847	On-chip summing requested	N	N
Observation end date	2010-01-01T09:27:22	2010-01-01T09:45:13	Subarray requested	NONE	NONE
Read mode	TIMED	TIMED	Alternating exposures requested	N	N
			[s] Primary exposure time	0.000000	3.2

2.3 Aspect



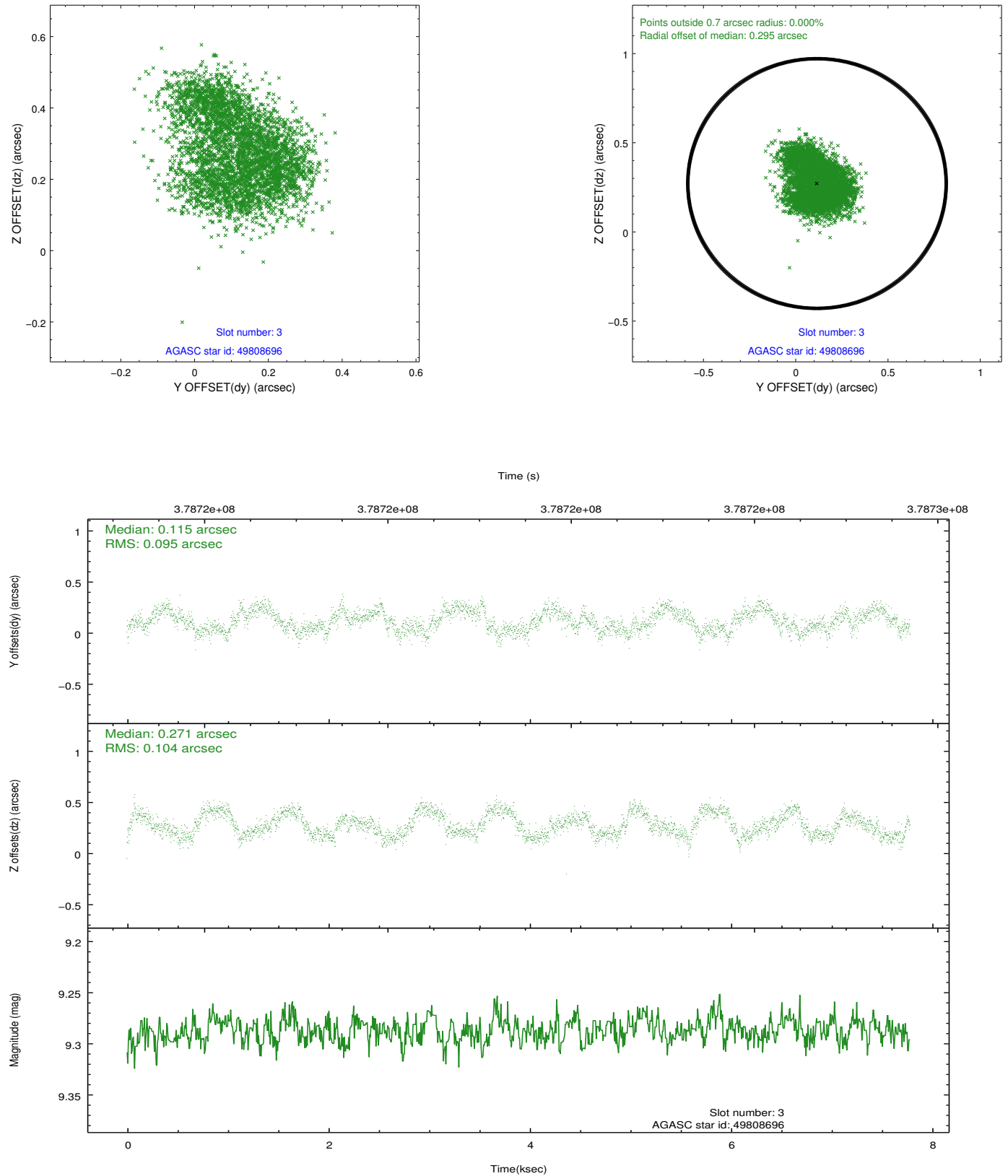


Slot Statistics

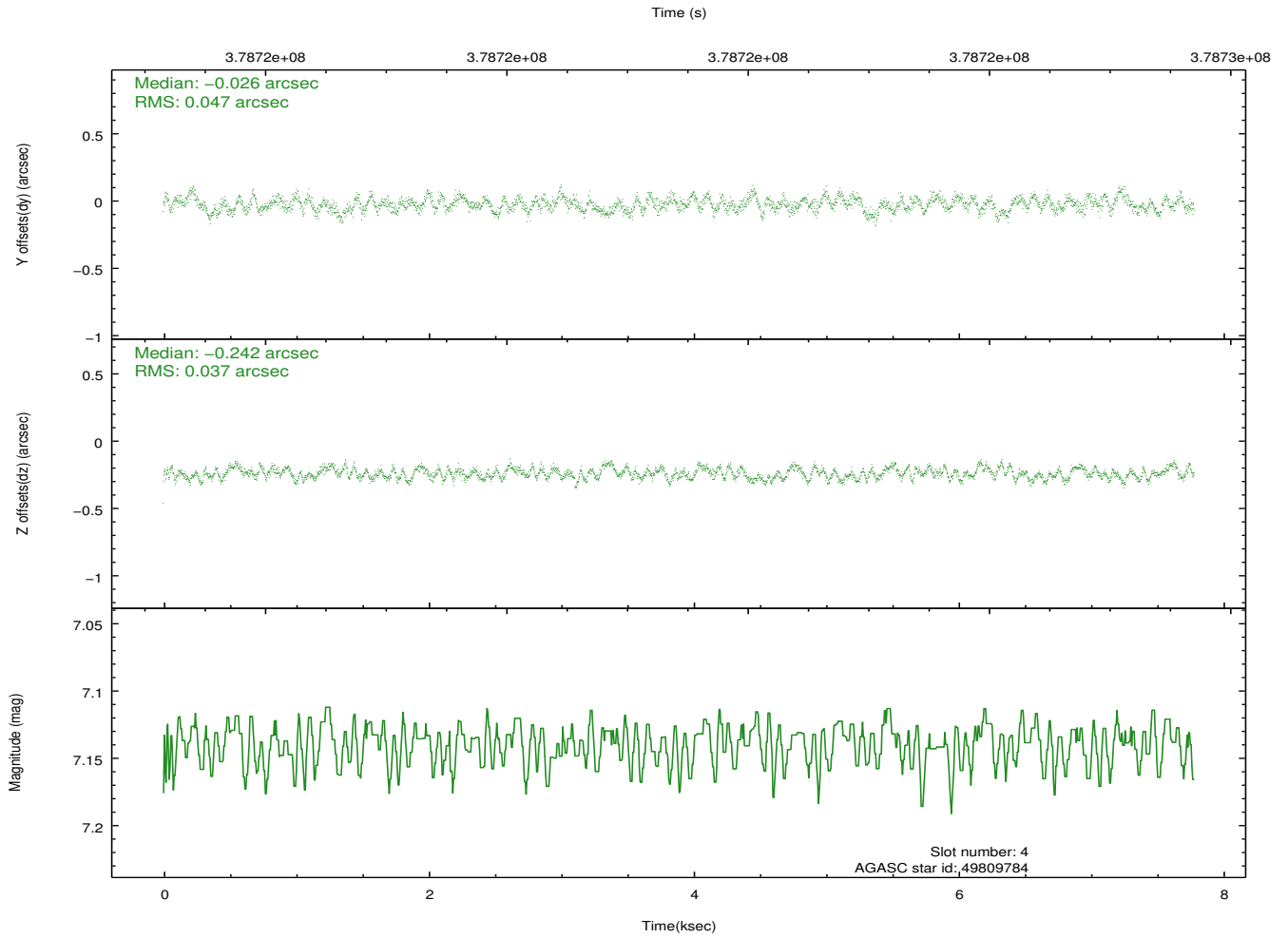
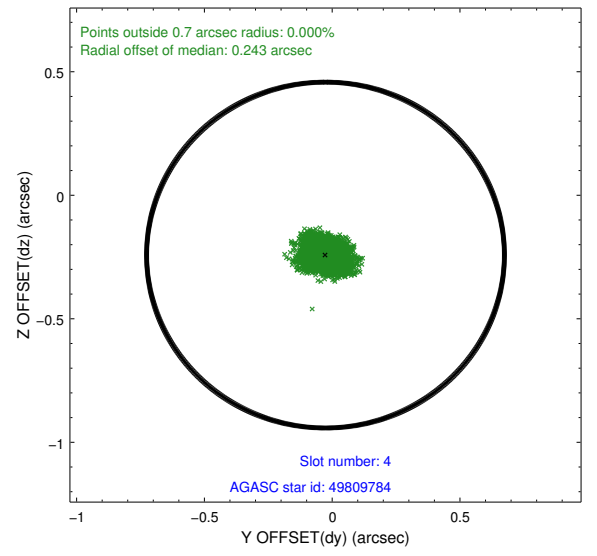
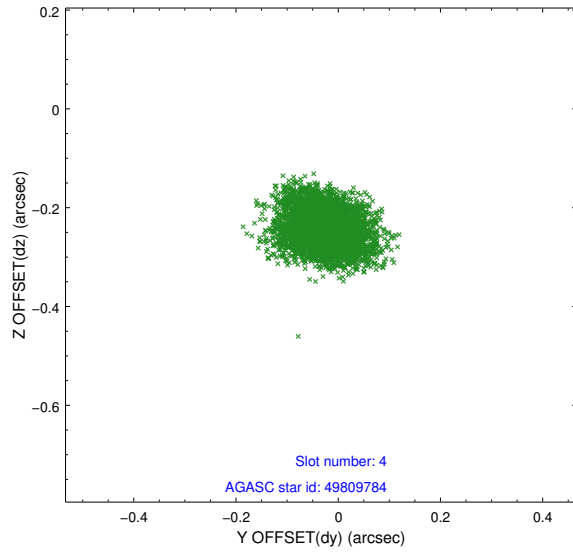
slot	status	id	mag	n_pts	med_dy	med_dz	dr1	dr2	ra	dec	mean_y	mean_z
0	FID	ACIS-S-2	6.87	1898	-0.008	-0.006	0.006	0.011	0.000000	0.000000	-768.05	-1738.20
1	FID	ACIS-S-5	6.99	1898	-0.087	-0.013	0.008	0.013	0.000000	0.000000	-1821.54	163.04
2	FID	ACIS-S-6	7.09	1898	0.069	0.027	0.008	0.013	0.000000	0.000000	392.90	807.75
3	GUIDE	49808696	9.29	3793	0.115	0.271	0.155	0.225	245.038428	7.065168	1270.47	-1430.08
4	GUIDE	49809784	7.14	3796	-0.026	-0.242	0.064	0.102	244.643240	7.260489	878.30	96.67
5	GUIDE	49810096	9.28	3789	-0.190	0.234	0.095	0.153	245.028692	6.862819	697.06	-1880.82
6	GUIDE	49815600	8.39	3796	0.157	-0.023	0.065	0.104	244.254810	7.151736	-326.25	890.73
7	GUIDE	124001856	8.95	3795	-0.058	-0.248	0.107	0.171	244.131276	7.544303	455.82	2148.15

2.4 Star Slots

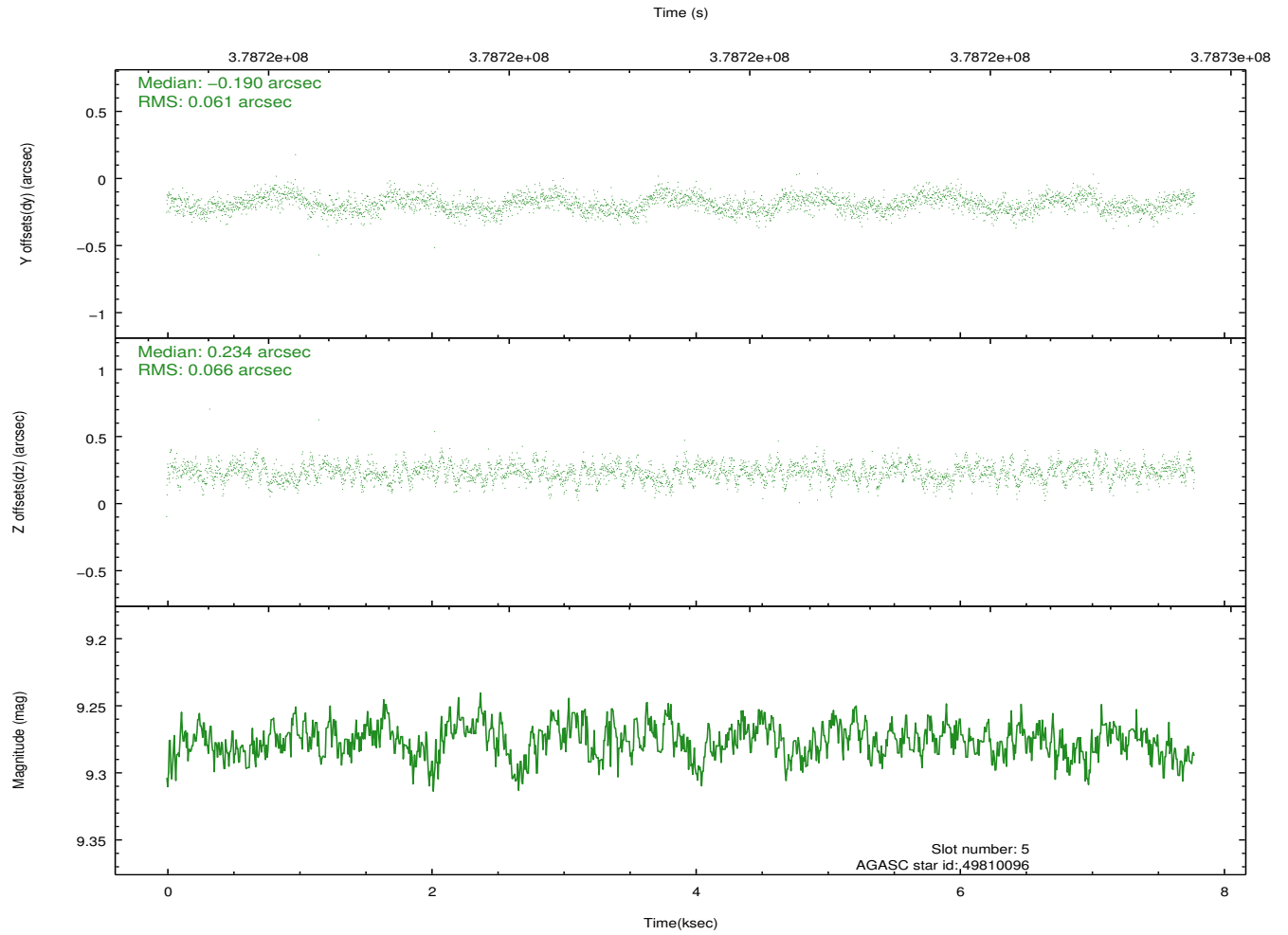
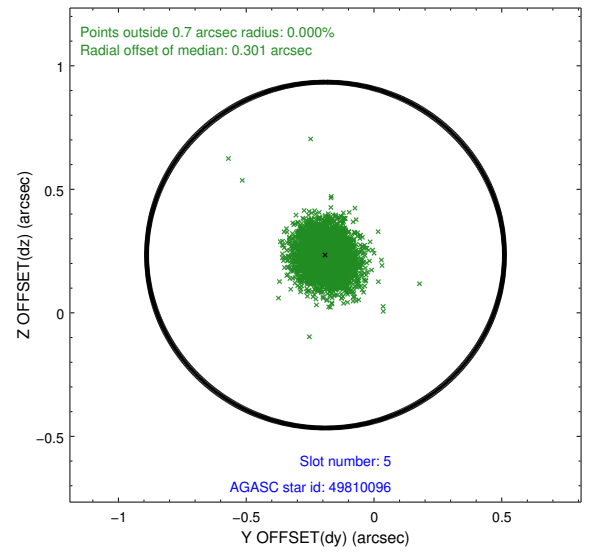
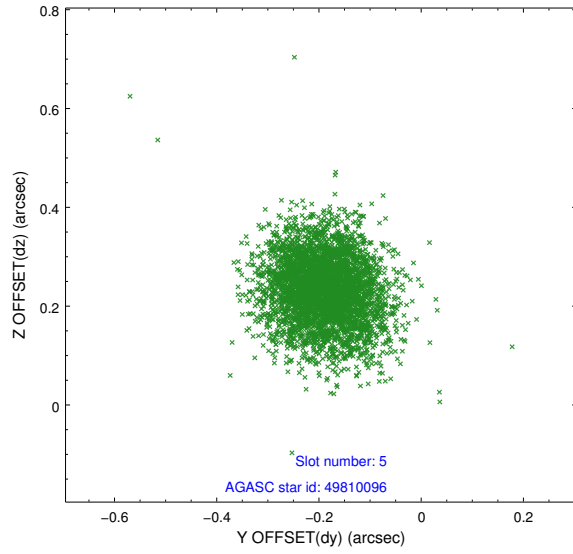
2.4.1 Slot 3



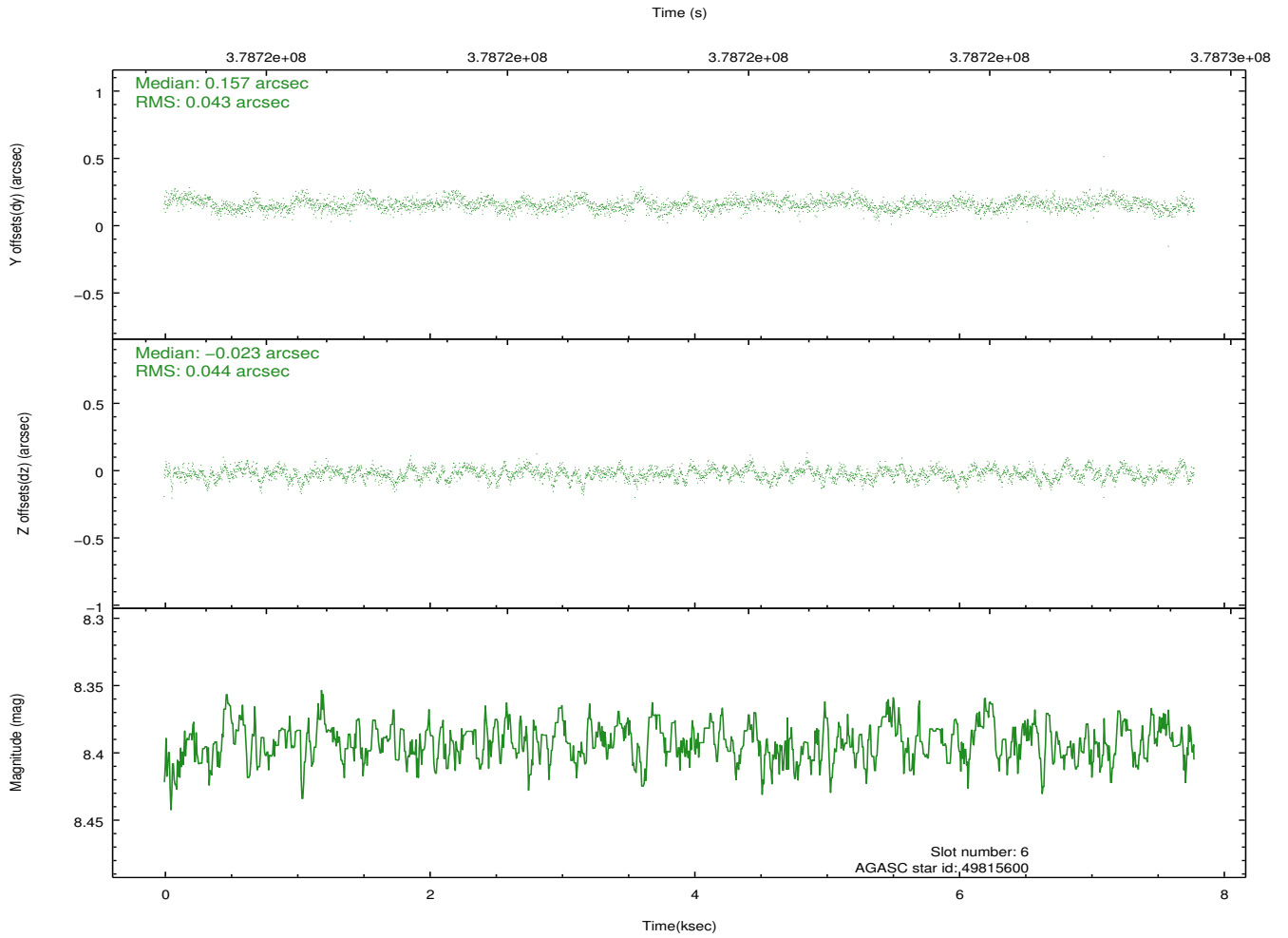
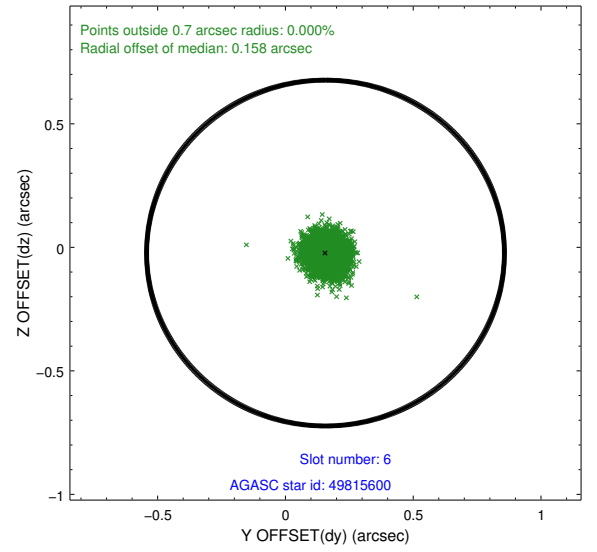
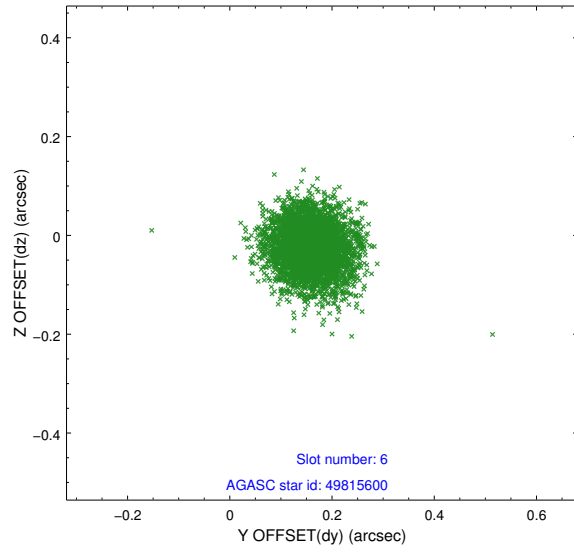
2.4.2 Slot 4



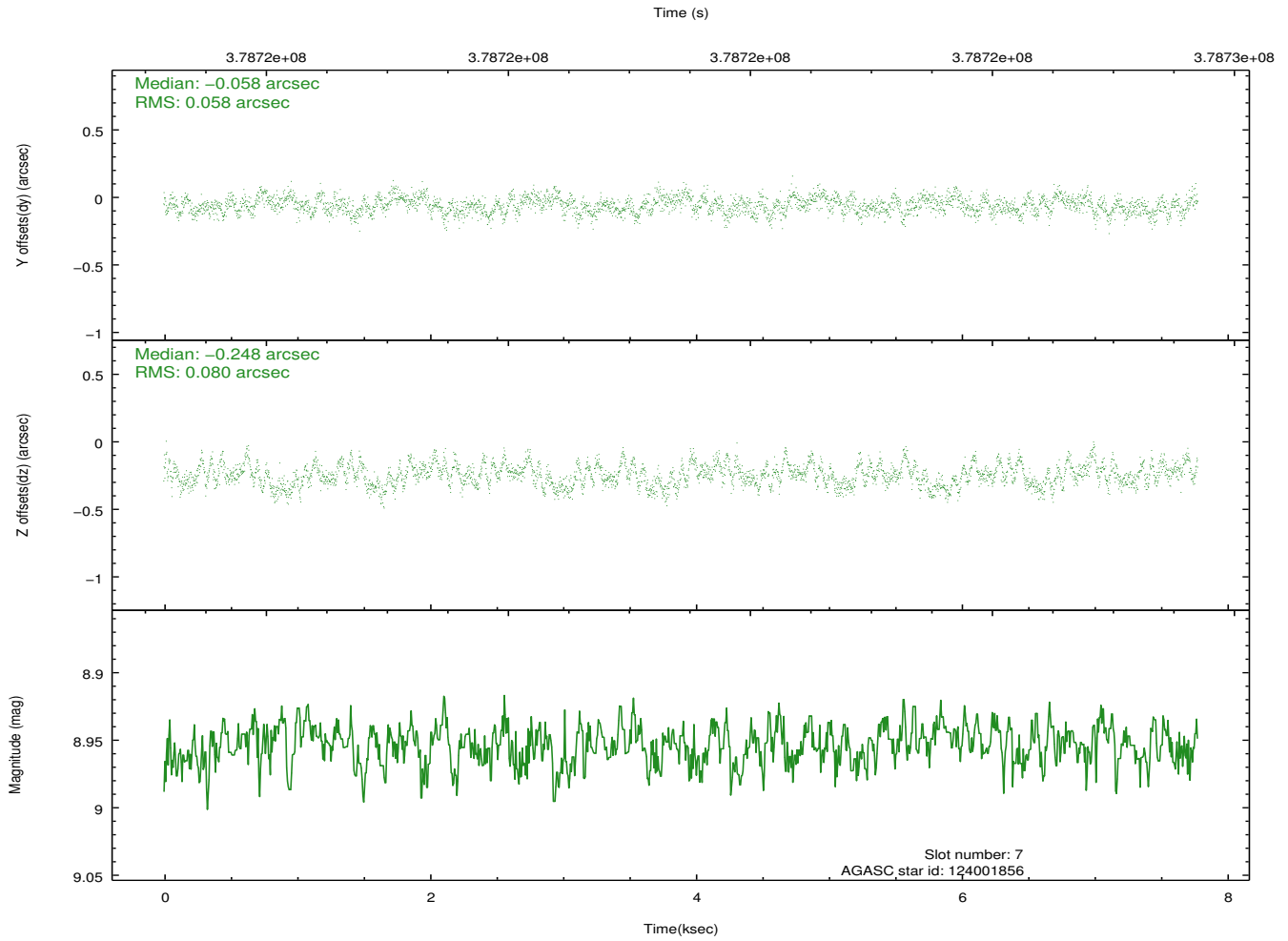
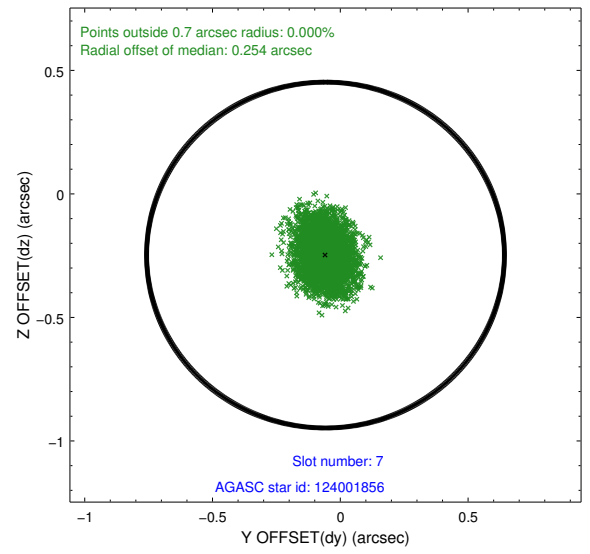
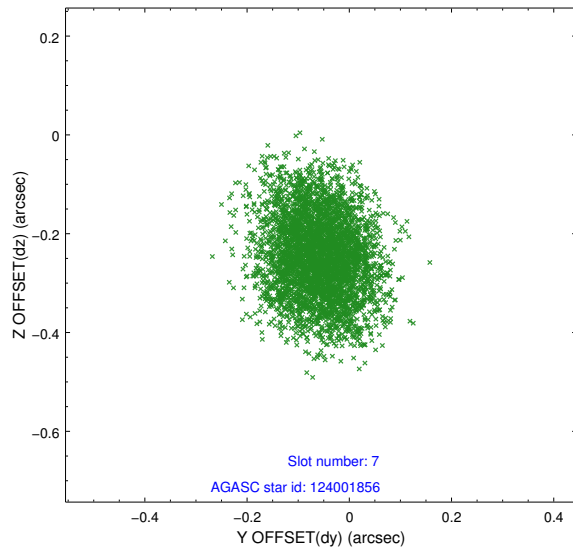
2.4.3 Slot 5



2.4.4 Slot 6

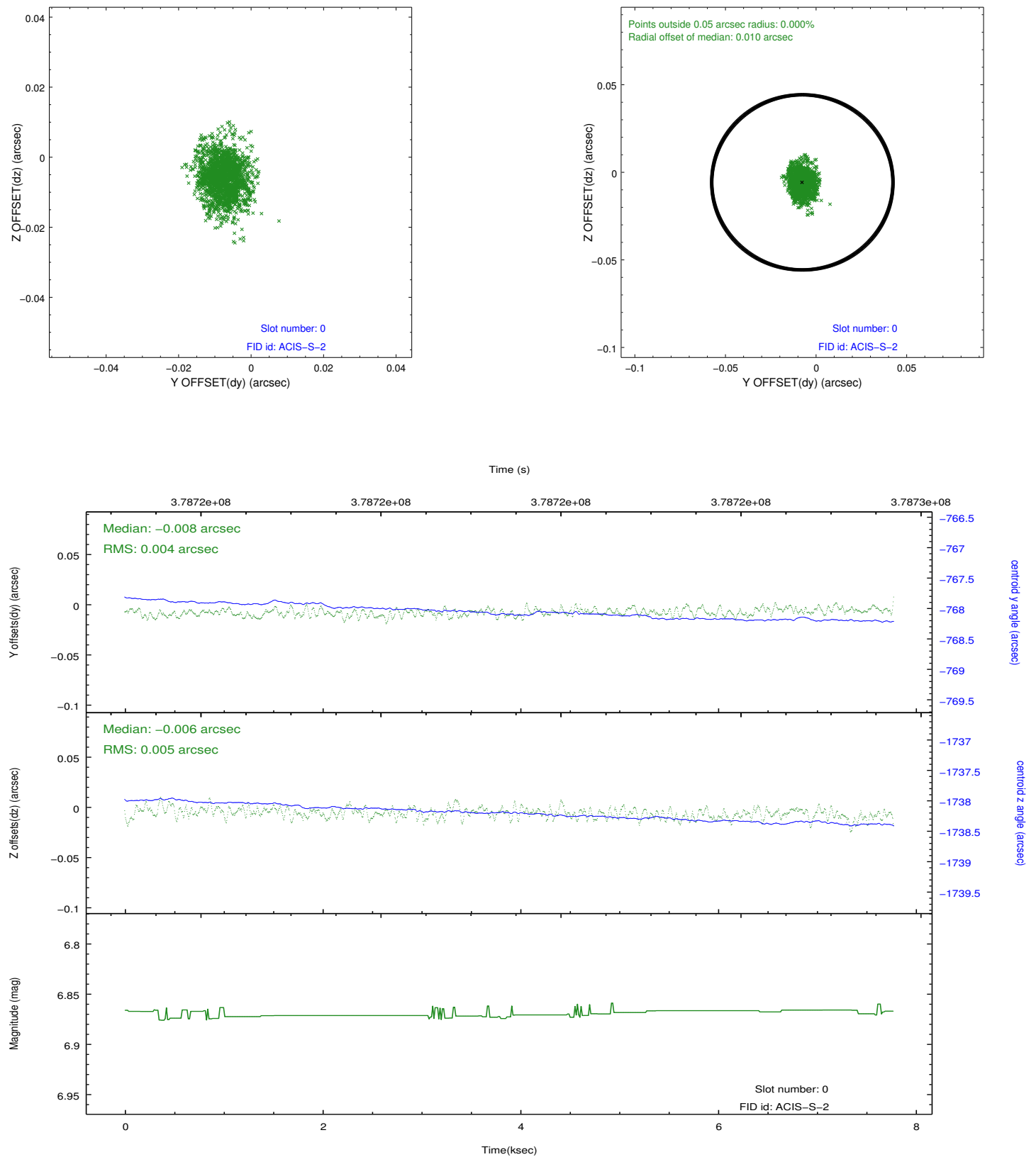


2.4.5 Slot 7

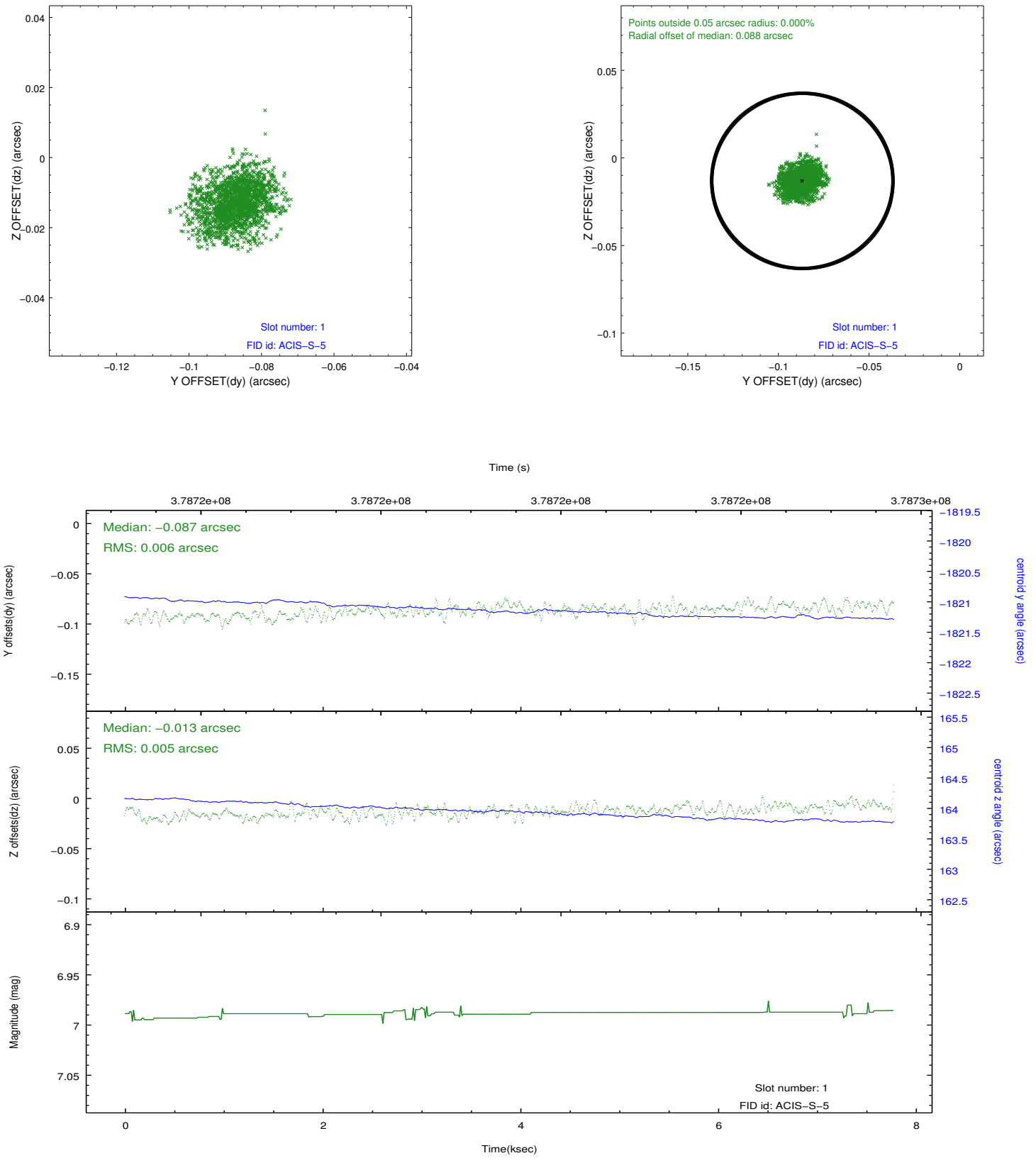


2.5 FID Slots

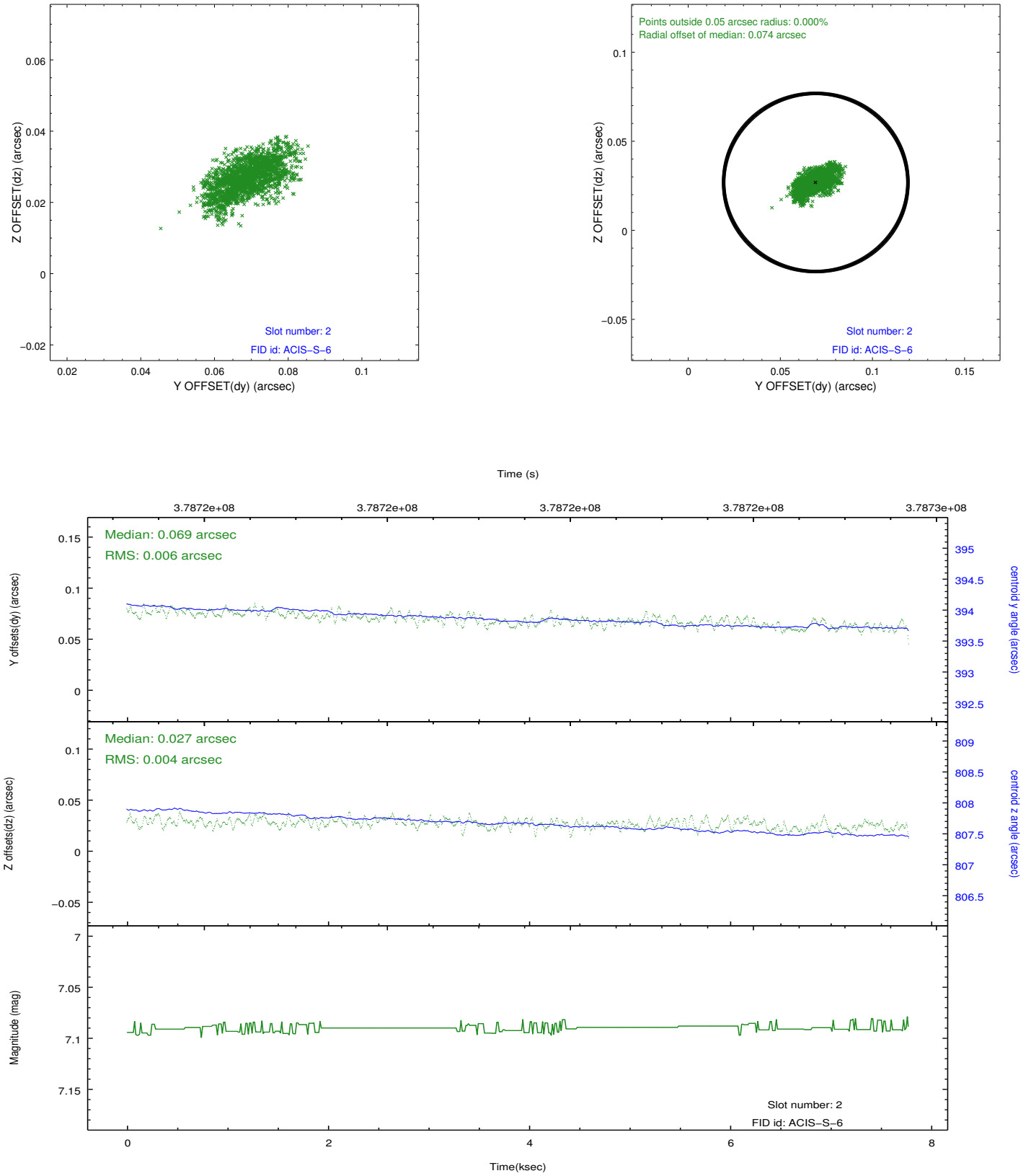
2.5.1 Slot 0



2.5.2 Slot 1



2.5.3 Slot 2



A Summary

A.1 Status

V&V Scientist	Jen Lauer
V&V Date (YYYY-MM-DD)	2012.06.25
V&V Edition	1
V&V Disposition and Status	OK
V&V Charge Time	7.7759999710917

A.2 Comments