

V&V Reference Report

L2 ASCDS Version : 8.4.5

Observation 11306 - L2 Version 2
Chandra X-Ray Center

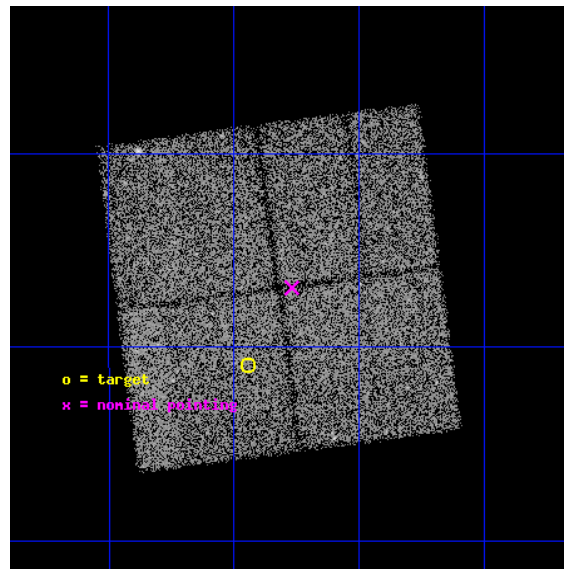
L2 Processing Date : Jun 25 2012

Contents

1	Front	2
2	OBI	3
2.1	OBI	3
2.1.1	Images	3
2.1.2	Bias	3
2.1.3	Parameters	4
2.1.4	Events	4
2.2	Compared Parameters	5
2.3	Aspect	6
2.4	Star Slots	9
2.4.1	Slot 3	9
2.4.2	Slot 4	10
2.4.3	Slot 5	11
2.4.4	Slot 6	12
2.4.5	Slot 7	13
2.5	FID Slots	14
2.5.1	Slot 0	14
2.5.2	Slot 1	15
2.5.3	Slot 2	16
A	Summary	17
A.1	Status	17
A.2	Comments	17

1 Front

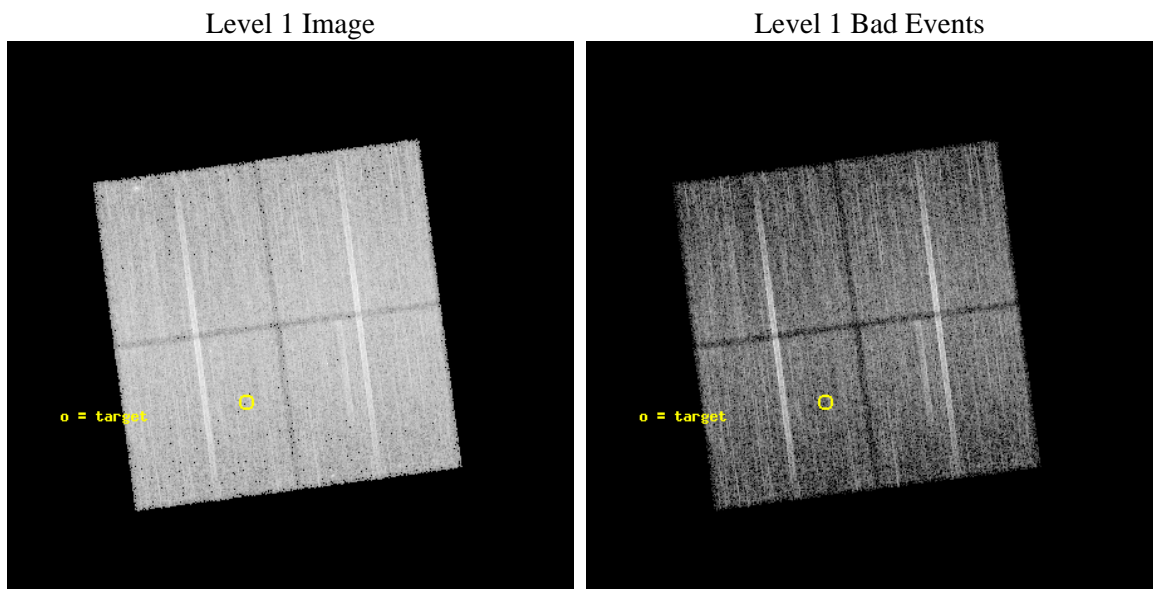
seq_num	600825	Sequence number
obs_id	11306	Observation id
title	The Deepest Stellar X-ray/optical Census of the Bulge	Proposal tit
observer	Dr William Clarkson	Principal investigator
object	SWEEPS_FIELD	Source name
dtcycle	0	
cycle	P	events from which exps? Prim/Second/Both
ra_targ	269.735558	Observer's specified target RA [deg]
dec_targ	-29.18259	Observer's specified target Dec [deg]
ra_nom	269.69212906416	Nominal RA [deg]
dec_nom	-29.115827839582	Nominal Dec [deg]
roll_nom	82.448604161629	Nominal Roll [deg]
revision	2	Processing version of data
ontime	20056.95915401	Sum of GTIs [s]
livetime	19794.900216944	Livetime [s]
ontime0	20053.818153739	Sum of GTIs [s]
ontime1	20056.95915401	Sum of GTIs [s]
ontime2	20056.959163904	Sum of GTIs [s]
ontime3	20050.677173257	Sum of GTIs [s]
l2events	70546	Number of level 2 events



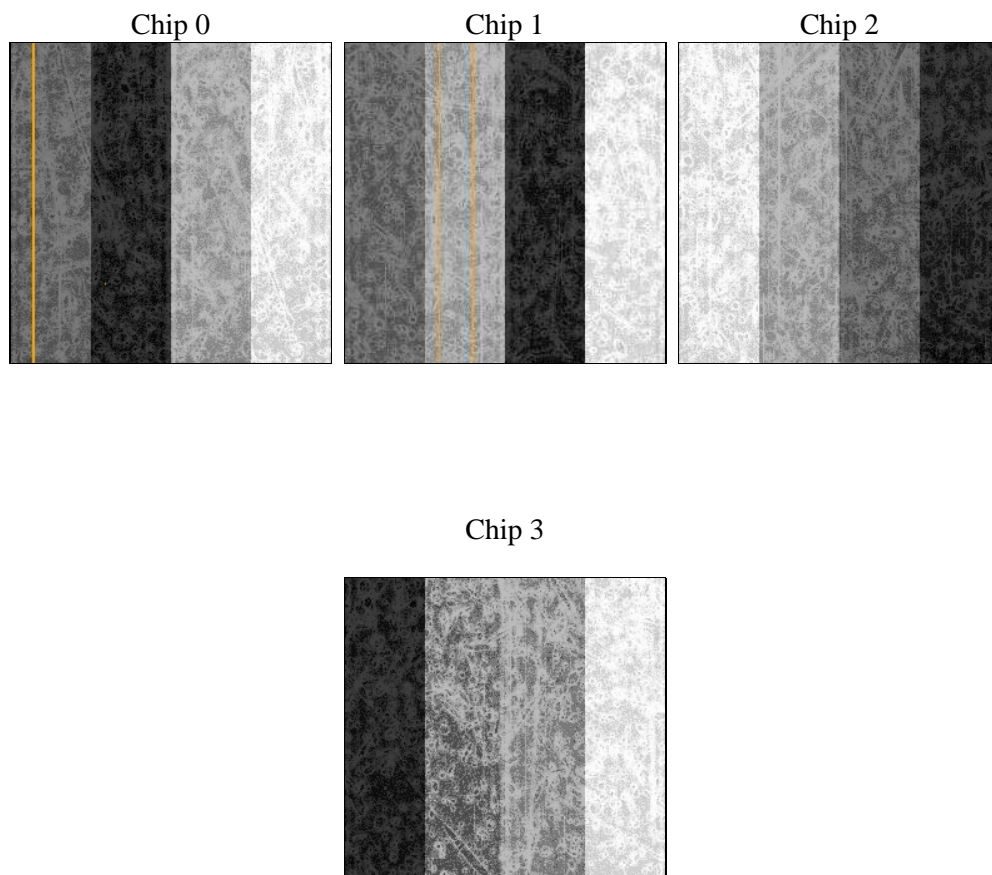
2 OBI

2.1 OBI

2.1.1 Images



2.1.2 Bias



2.1.3 Parameters

obi_num	0	Obi number	sched_exp_time	20000.000000	[s] Scheduled observation exposure time
ascdsver	8.4.5	Processing system revision	ontime	20056.95915401	Sum of GTIs [s]
caldsver	4.4.10	 	ontime0	20053.818153739	Sum of GTIs [s]
date	2012-06-26T00:25:57	Date and time of file creation	ontime1	20056.95915401	Sum of GTIs [s]
revision	2	Processing version of data	ontime2	20056.959163904	Sum of GTIs [s]
			ontime3	20050.677173257	Sum of GTIs [s]
			l1events	601912	Number of level 1 events

2.1.4 Events

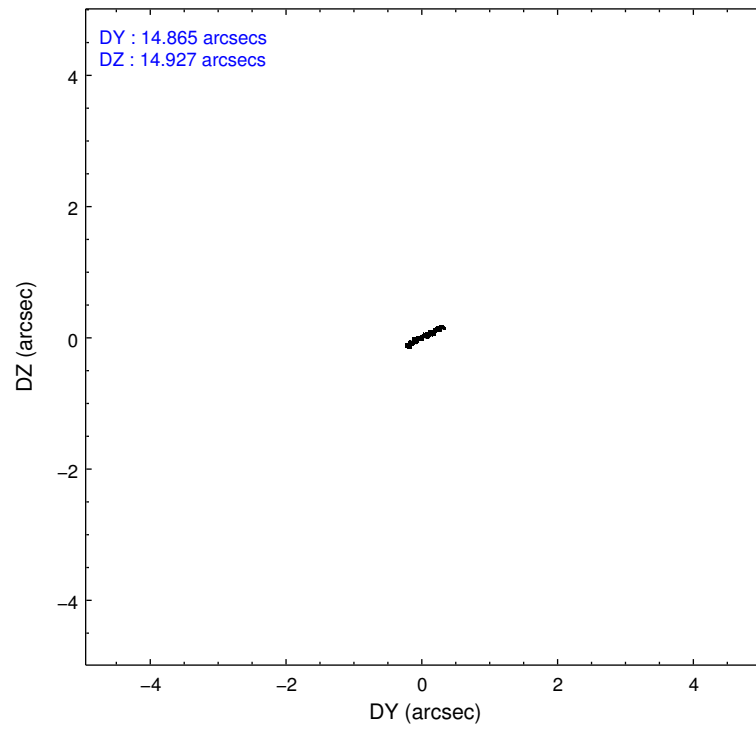
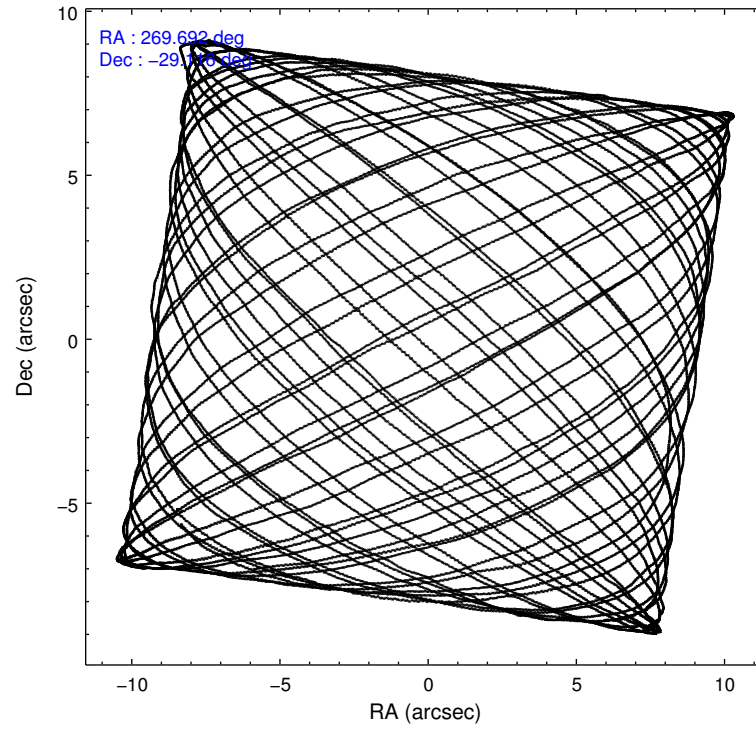
	ccd 0	ccd 1	ccd 2	ccd 3
level 1 events	144748	147813	157516	151835
rejected events	123852	125223	137670	132322
rejected %	85%	84%	87%	87%

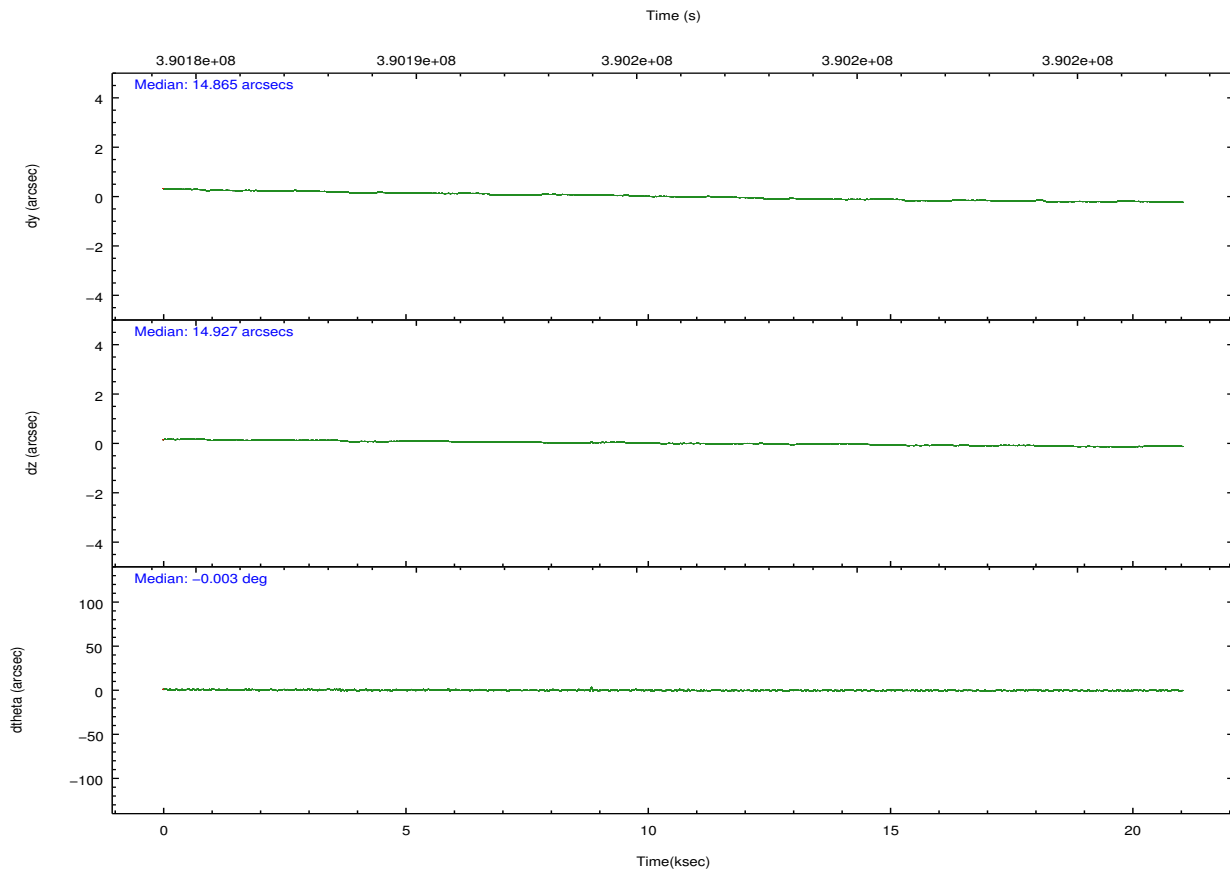
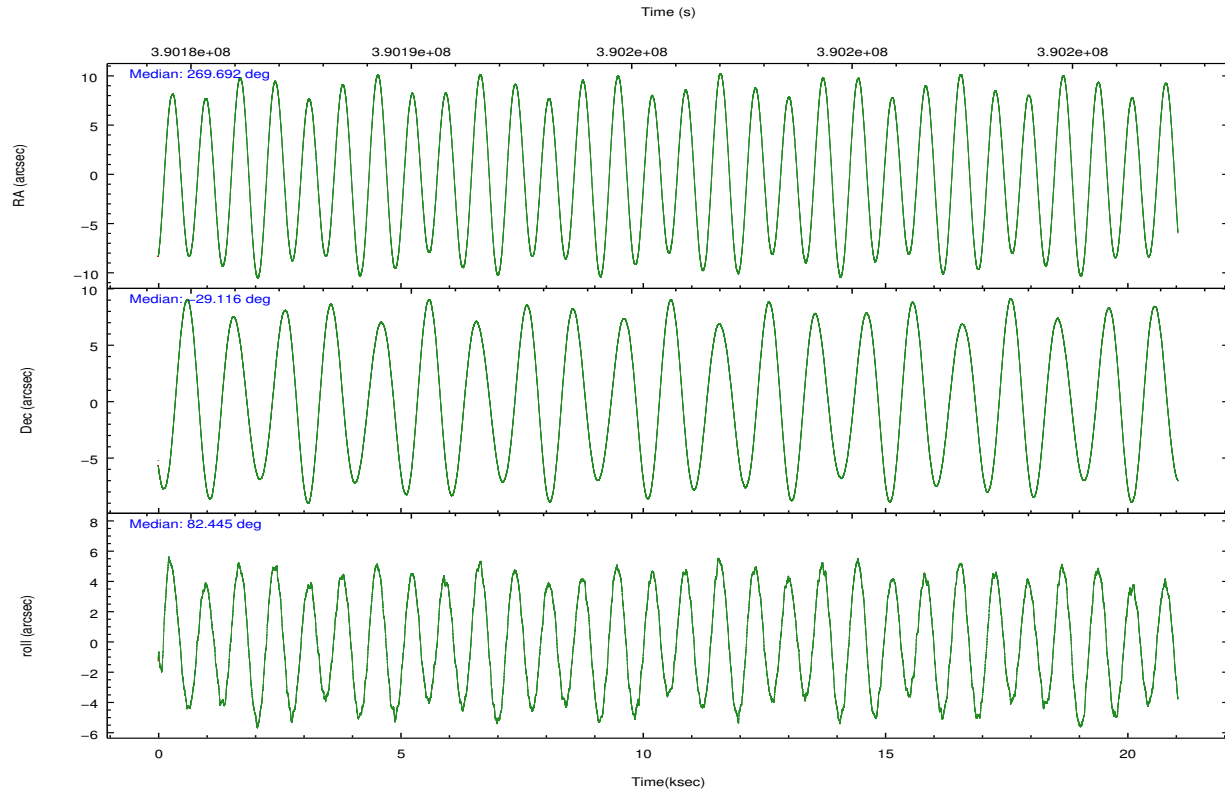
	ccd 0	ccd 1	ccd 2	ccd 3
grade 0 events	9271	10085	9067	8897
	6%	6%	5%	5%
grade 1 events	94	98	95	132
	0%	0%	0%	0%
grade 2 events	4449	4696	4201	3753
	3%	3%	2%	2%
grade 3 events	1914	2021	1722	1810
	1%	1%	1%	1%
grade 4 events	1903	1959	1771	1834
	1%	1%	1%	1%
grade 5 events	6140	6526	5755	6732
	4%	4%	3%	4%
grade 6 events	3366	3832	3091	3223
	2%	2%	1%	2%
grade 7 events	117611	118596	131814	125454
	81%	80%	83%	82%

2.2 Compared Parameters

Parameter	Planned	Actual	Parameter	Planned	Actual
Instrument	ACIS	ACIS	Obspar format version number	7	7
Detector	ACIS-0123	ACIS-0123	Obspar file type	PREDICTED	ACTUAL
Grating	NONE	NONE	Obspar update status	NONE	UPDATED
Data mode	VFAINT	VFAINT	Number of optional ACIS chips dropped	0	0
Observation mode	POINTING	POINTING	On-chip summing requested	N	N
[deg] Pointing RA	269.704251	269.6921290641639	Subarray requested	NONE	NONE
[deg] Pointing Dec	-29.141191	-29.11582783958237	Alternating exposures requested	N	N
[deg] Pointing Roll	82.245819	82.44860416162895	[s] Primary exposure time	0.000000	3.1
[mm] SIM focus pos	-0.782348	-0.7809083437167272			
[mm] SIM defocus	0	0.001439871863259334			
[mm] SIM translation stage pos	-233.592463	-233.5874344608287			
[mm] SIM translation stage offset	0	-0.005018542100998502			
[s] Observation start time (MET)	390186346.184000	390185047.53231			
Observation start date	2010-05-14T01:04:40	2010-05-14T00:44:07			
[s] Observation end time (MET)	390206346.184000	390207258.25844			
Observation end date	2010-05-14T06:38:00	2010-05-14T06:54:18			
Read mode	TIMED	TIMED			

2.3 Aspect



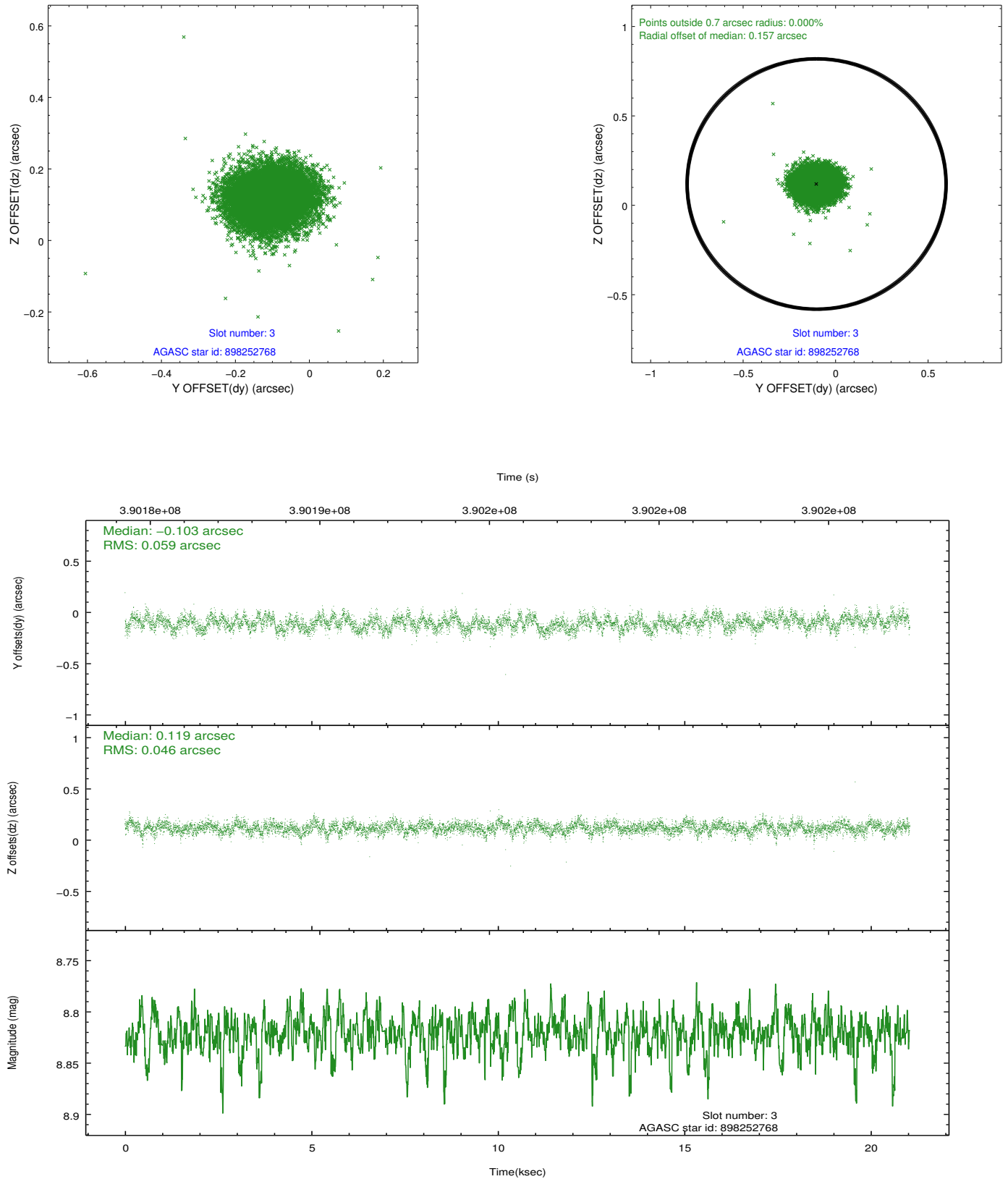


Slot Statistics

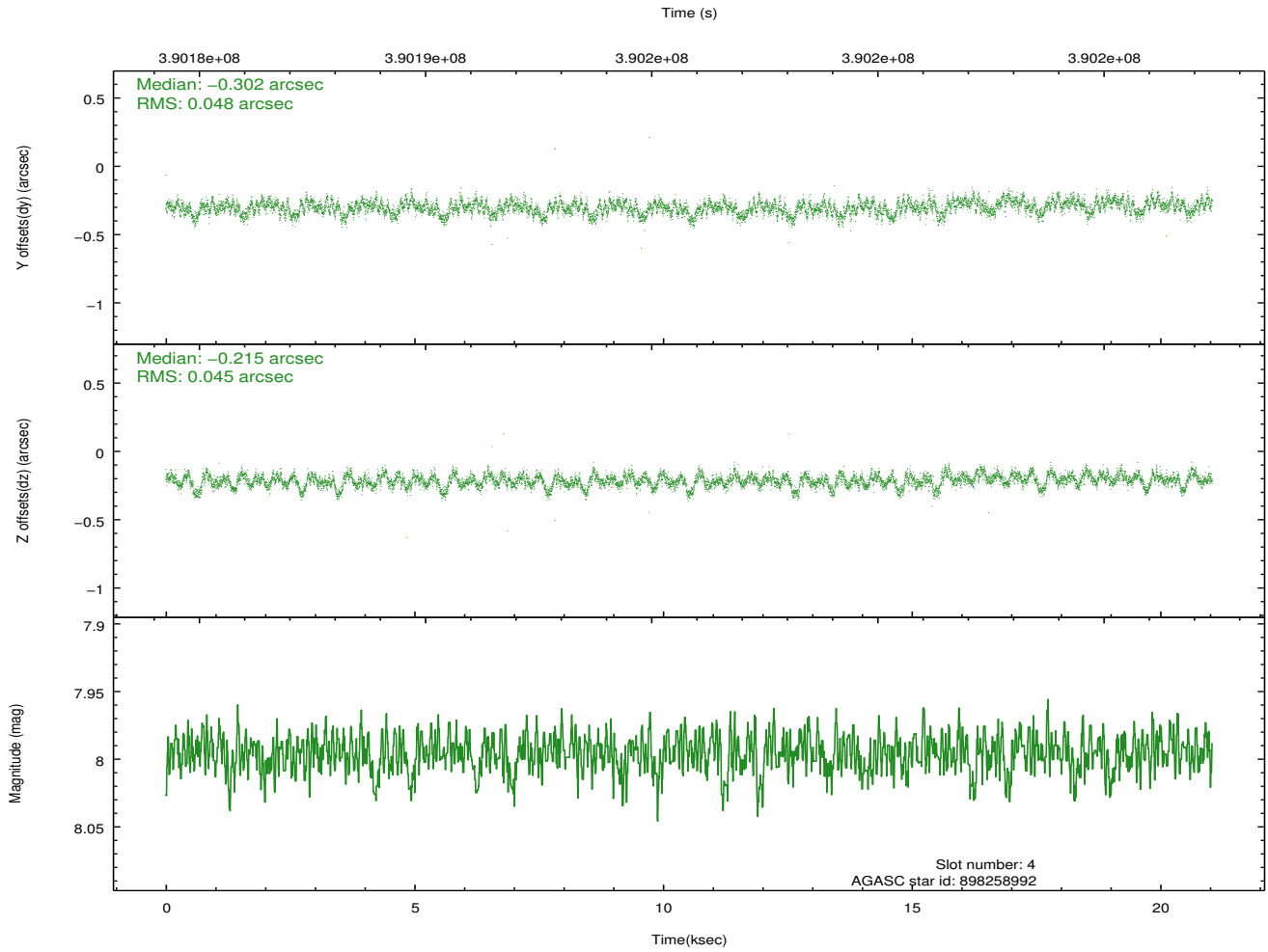
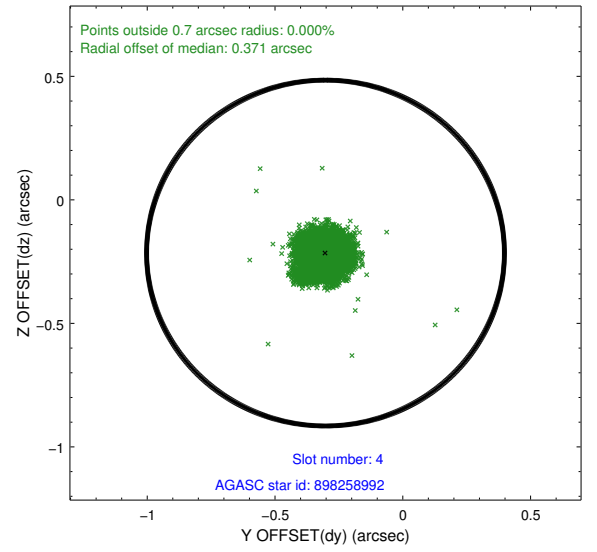
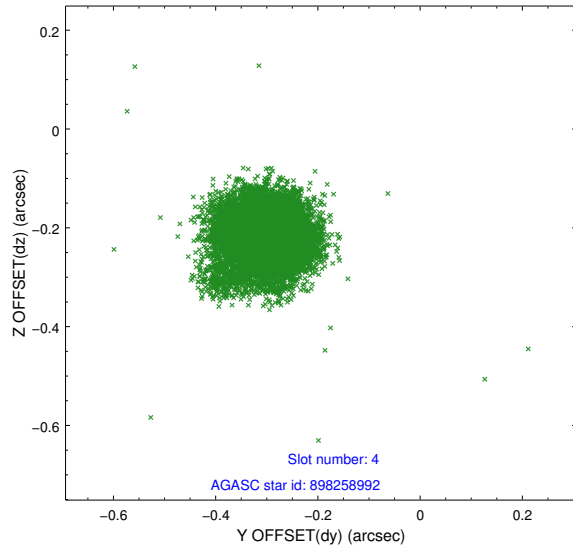
slot	status	id	mag	n_pts	med_dy	med_dz	dr1	dr2	ra	dec	mean_y	mean_z
0	FID	ACIS-I-1	7.06	5132	0.023	0.007	0.010	0.016	0.000000	0.000000	924.63	-838.51
1	FID	ACIS-I-5	7.05	5133	-0.207	0.030	0.009	0.018	0.000000	0.000000	-1823.64	1058.88
2	FID	ACIS-I-6	7.05	5133	0.094	0.033	0.008	0.014	0.000000	0.000000	390.02	1703.61
3	GUIDE	898252768	8.82	10260	-0.103	0.119	0.080	0.128	269.910789	-28.705322	1642.36	-434.13
4	GUIDE	898258992	8.00	10261	-0.302	-0.215	0.068	0.112	269.435214	-28.570389	1920.41	1120.07
5	GUIDE	898243064	8.74	10261	0.136	-0.284	0.078	0.130	268.852106	-29.678564	-2285.85	2378.51
6	GUIDE	898398488	7.80	10258	0.139	0.129	0.060	0.095	270.116283	-29.824370	-2265.38	-1606.88
7	GUIDE	898402144	8.25	10261	0.137	0.256	0.060	0.096	270.208935	-29.851667	-2324.89	-1906.88

2.4 Star Slots

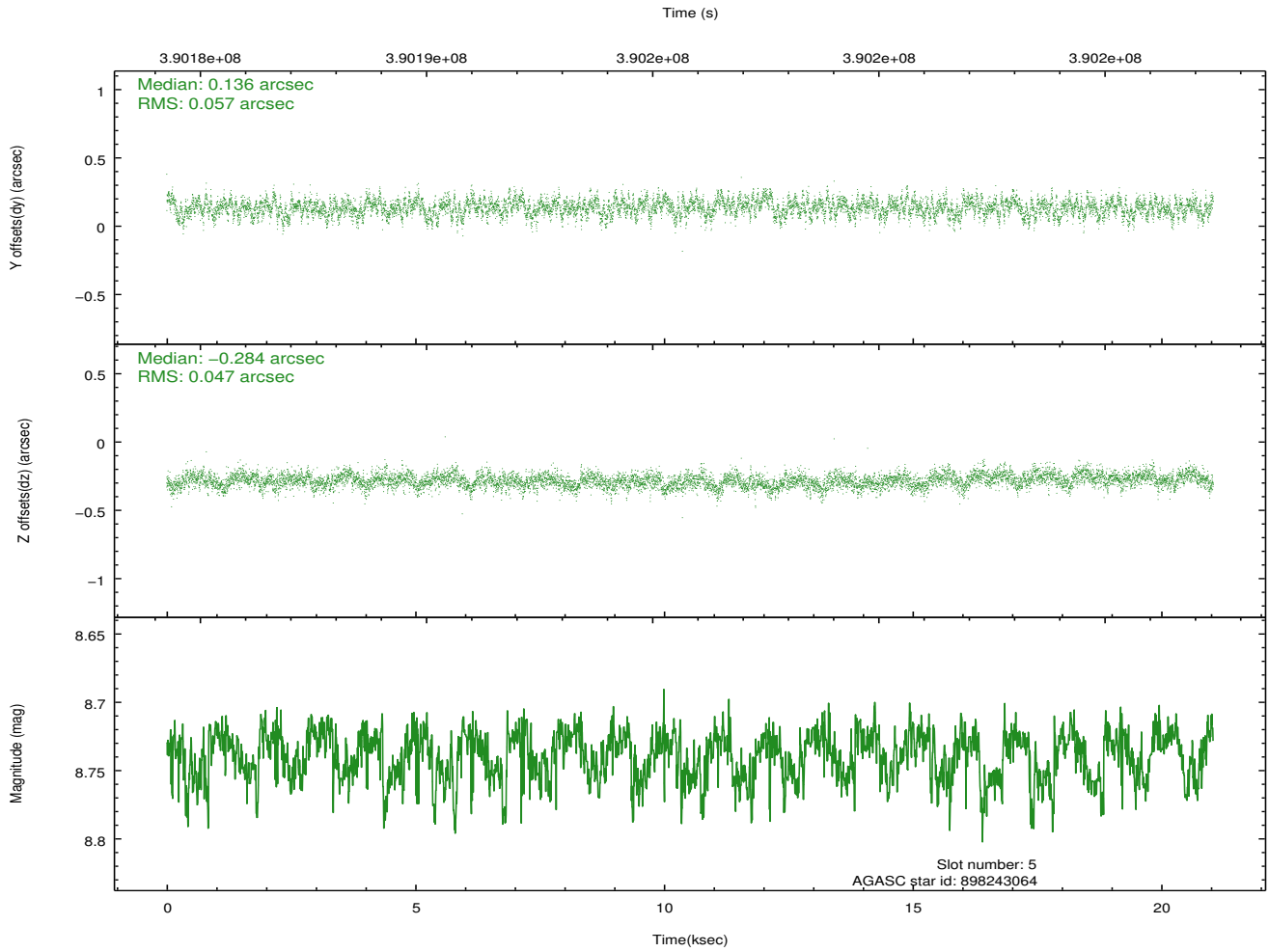
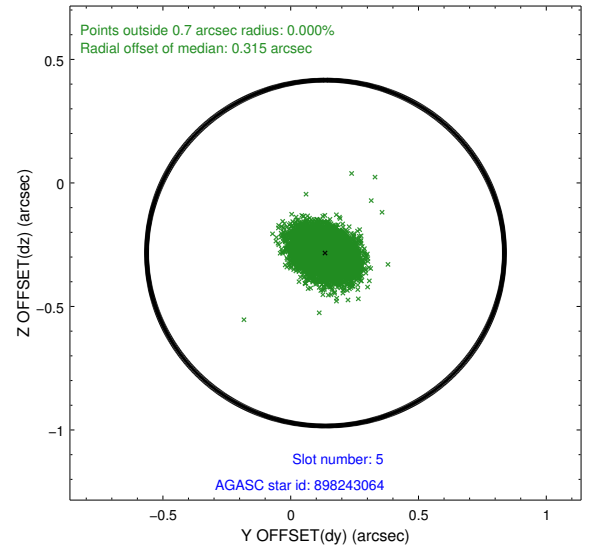
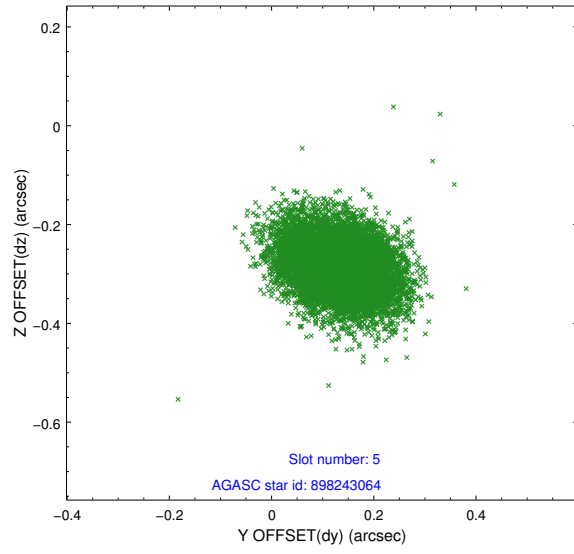
2.4.1 Slot 3



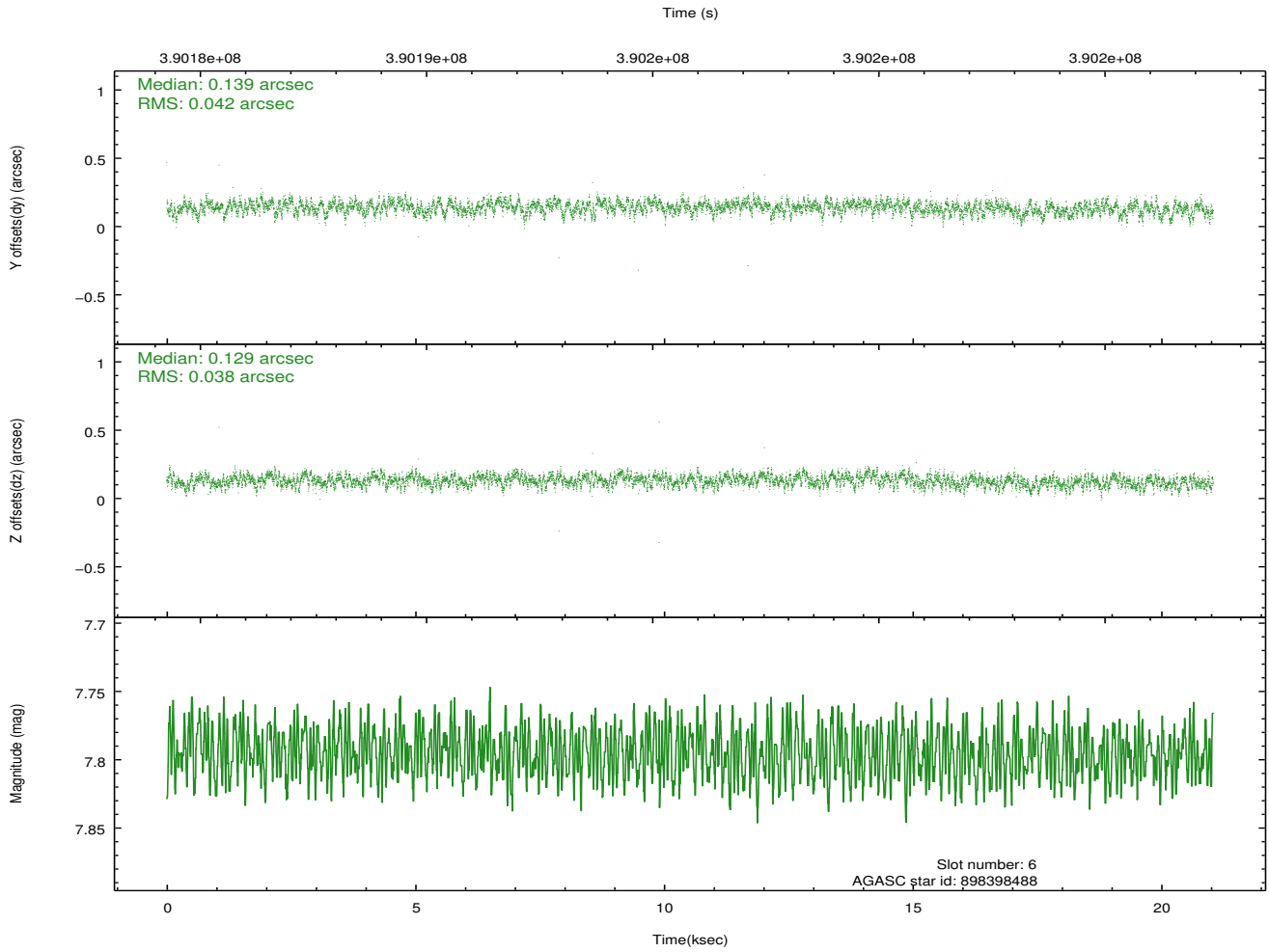
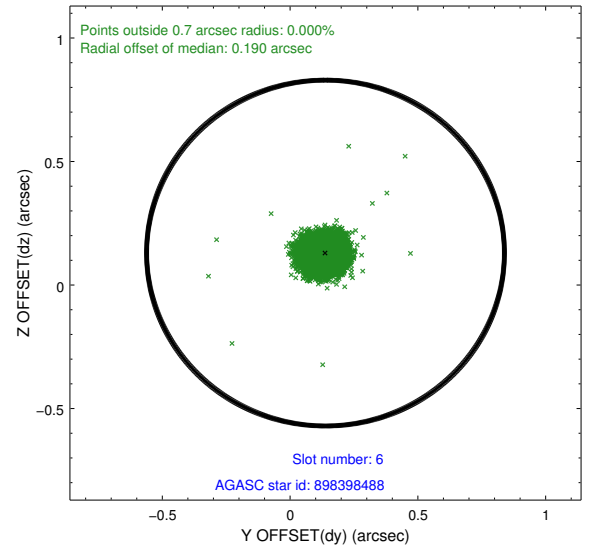
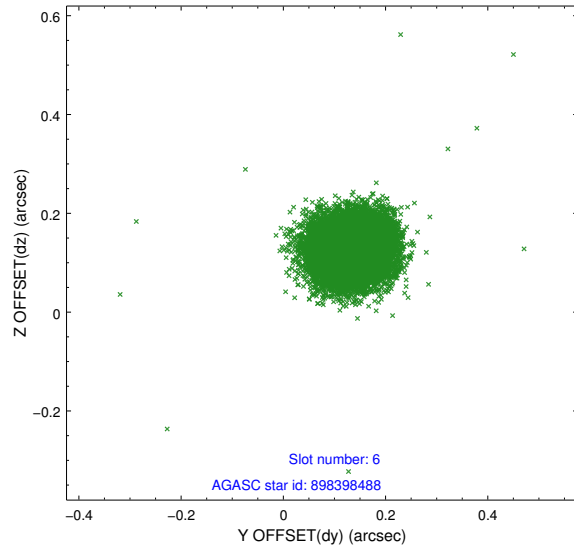
2.4.2 Slot 4



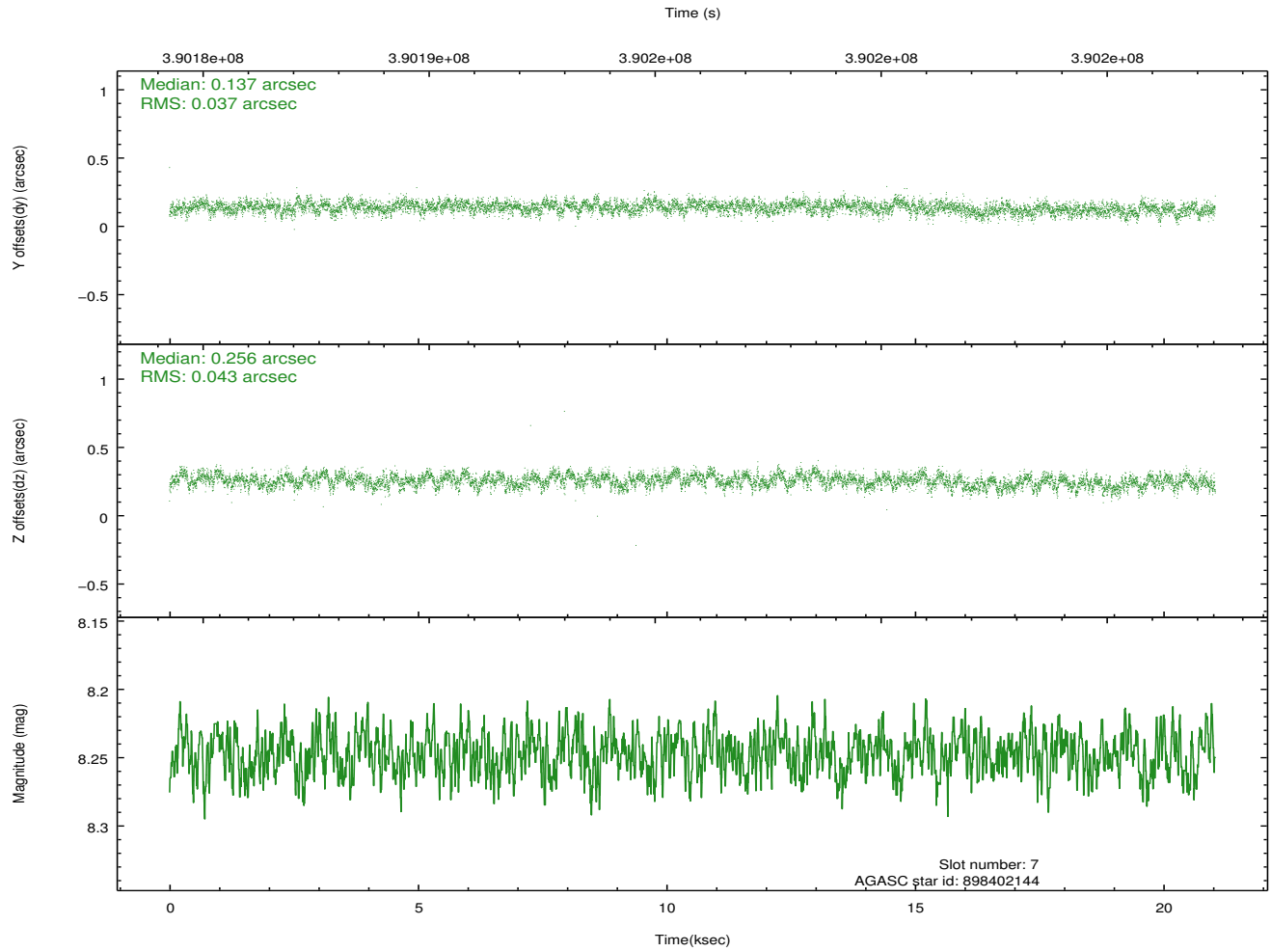
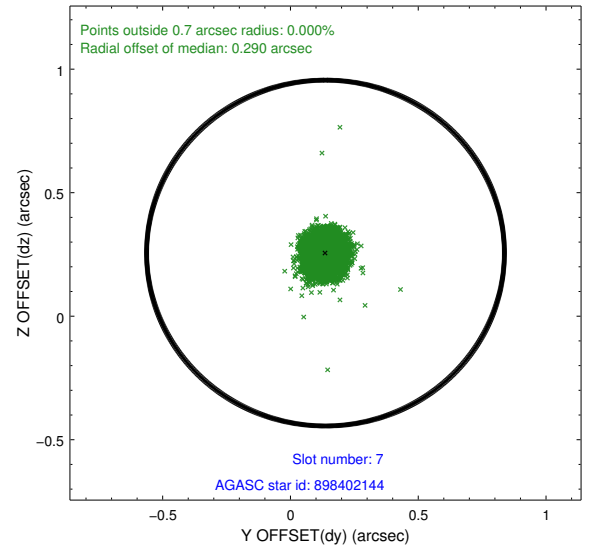
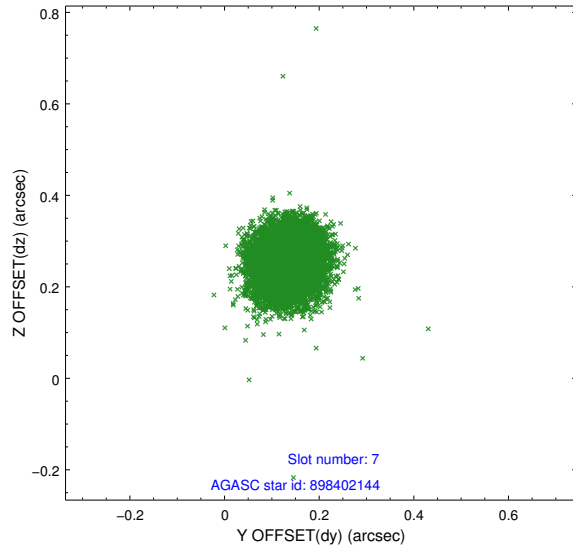
2.4.3 Slot 5



2.4.4 Slot 6

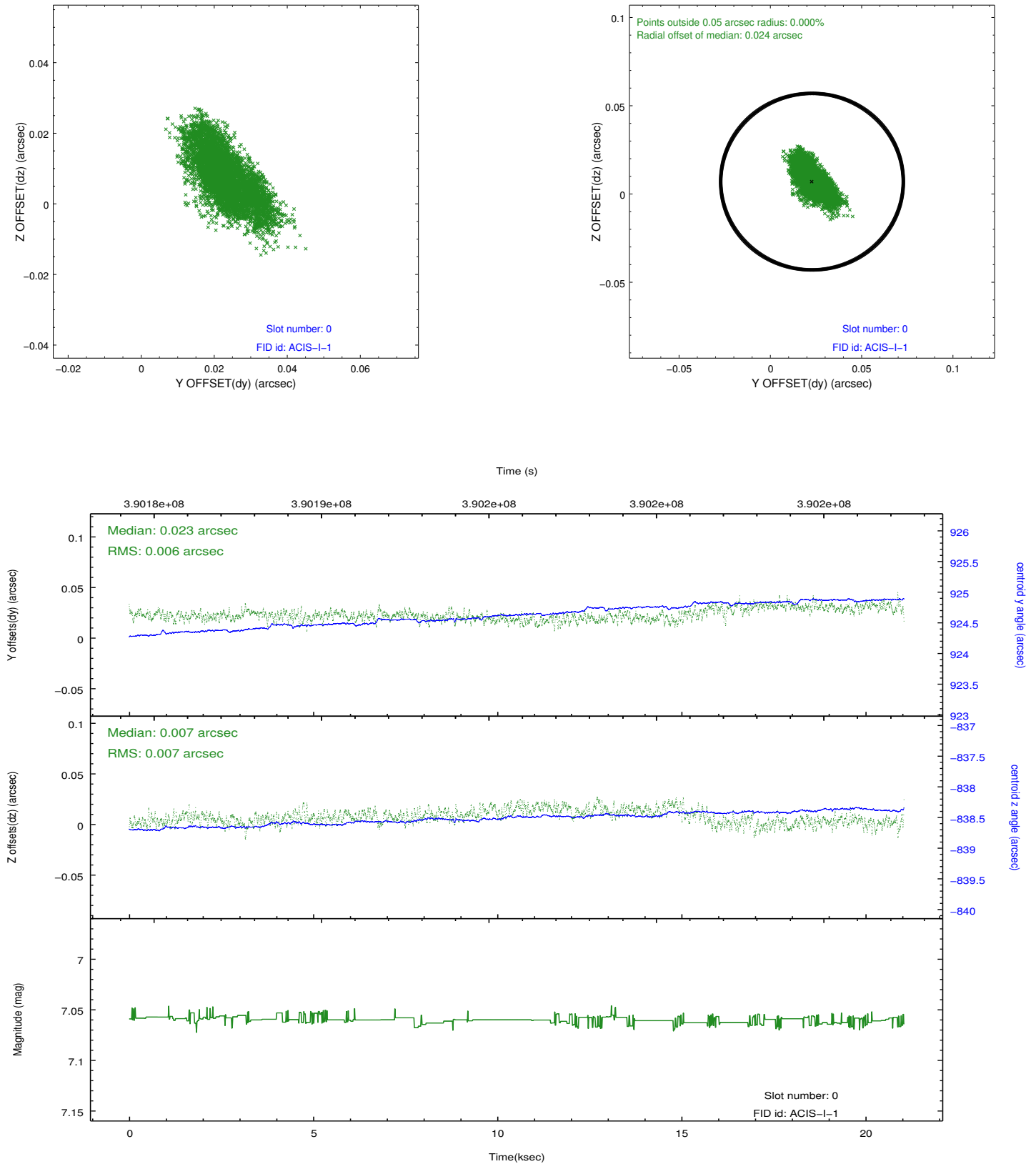


2.4.5 Slot 7

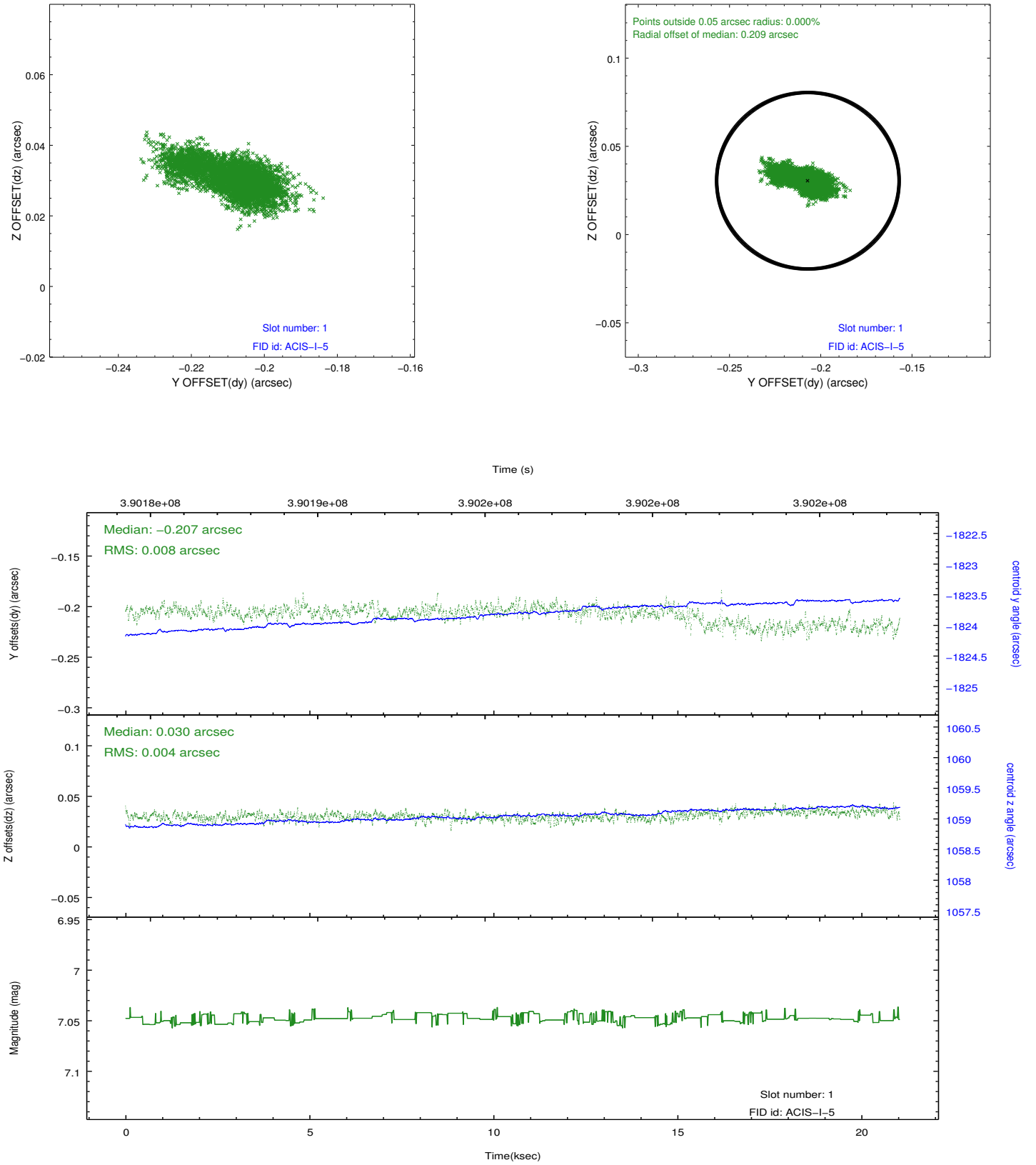


2.5 FID Slots

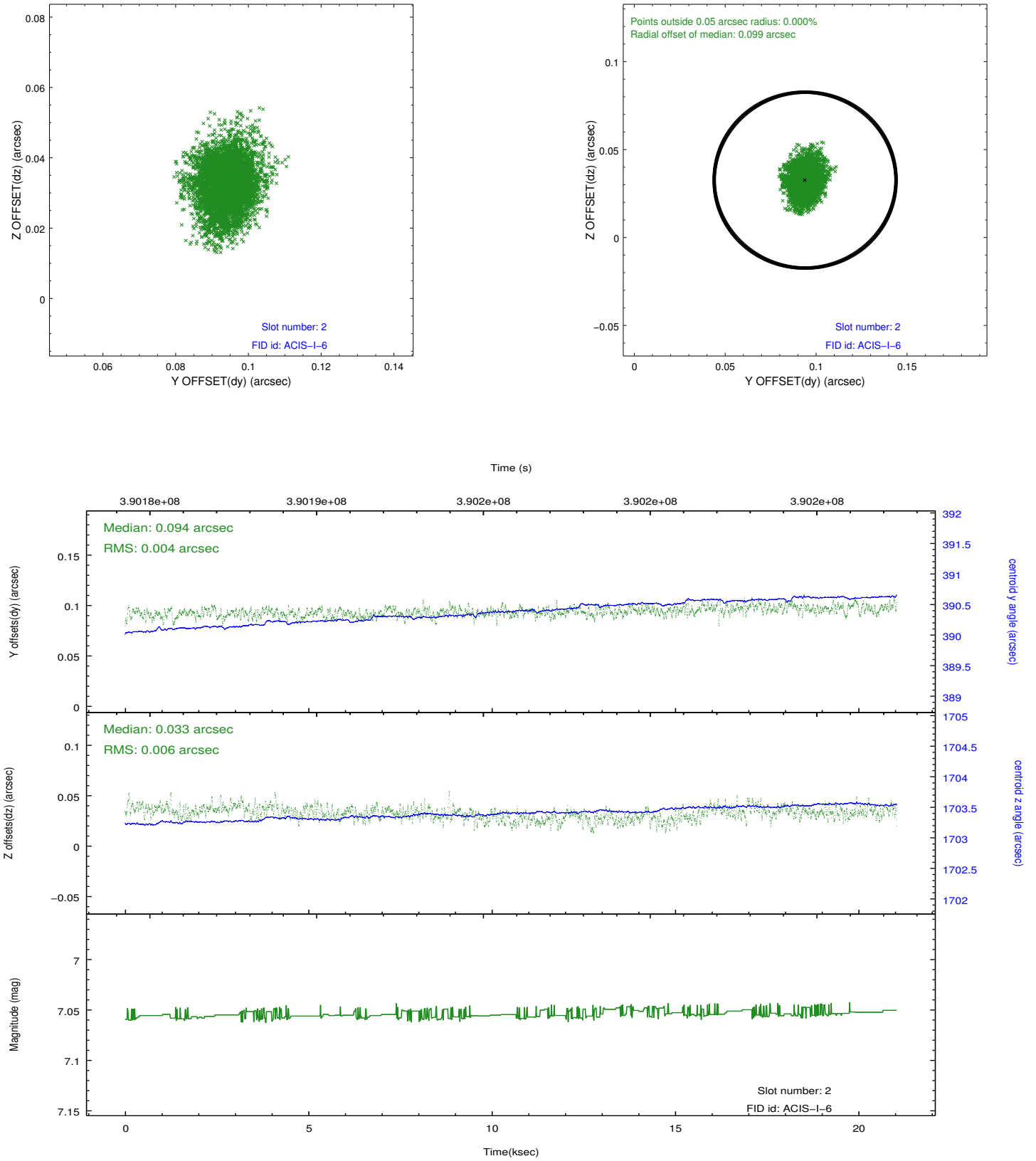
2.5.1 Slot 0



2.5.2 Slot 1



2.5.3 Slot 2



A Summary

A.1 Status

V&V Scientist	Beth Sundheim
V&V Date (YYYY-MM-DD)	2012.07.03
V&V Edition	1
V&V Disposition and Status	OK
V&V Charge Time	20.05695915395

A.2 Comments

Joint proposal with HST.