

V&V Reference Report

L2 ASCDS Version : 8.4.5

Observation 10806 - L2 Version 2
Chandra X-Ray Center

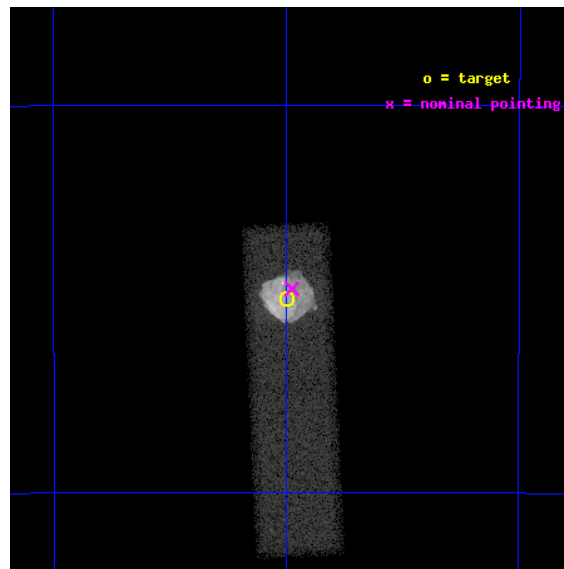
L2 Processing Date : Jun 13 2012

Contents

1	Front	2
2	OBI	3
2.1	OBI	3
2.1.1	Images	3
2.1.2	Bias	3
2.1.3	Parameters	4
2.1.4	Events	4
2.2	Compared Parameters	5
2.3	Aspect	6
2.4	Star Slots	9
2.4.1	Slot 3	9
2.4.2	Slot 4	10
2.4.3	Slot 5	11
2.4.4	Slot 6	12
2.4.5	Slot 7	13
2.5	FID Slots	14
2.5.1	Slot 0	14
2.5.2	Slot 1	15
2.5.3	Slot 2	16
A	Summary	17
A.1	Status	17
A.2	Comments	17

1 Front

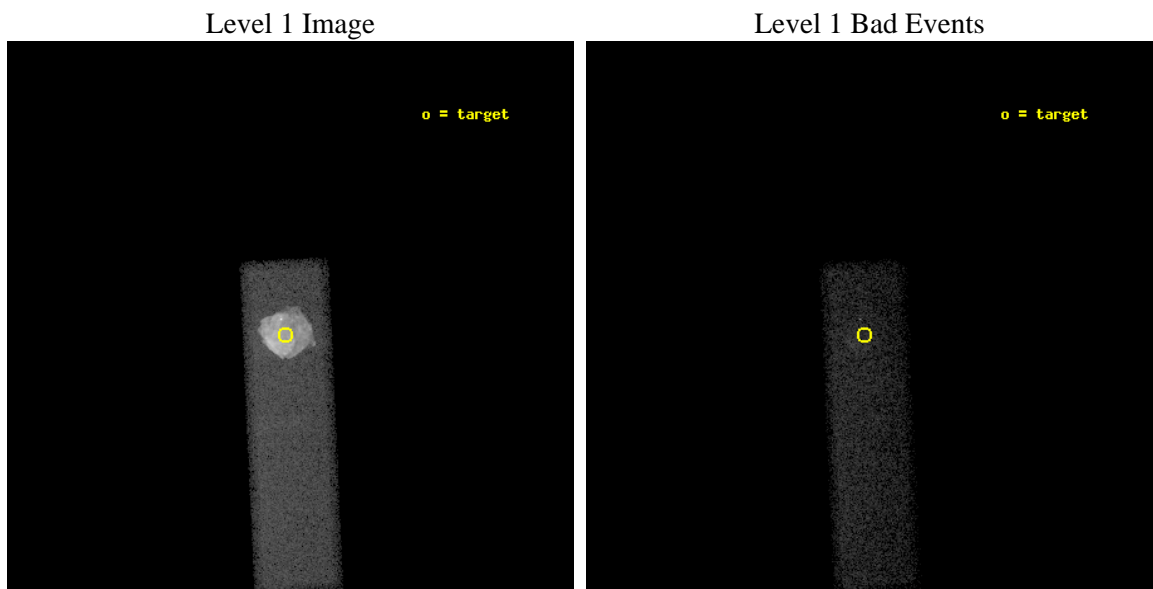
seq_num	501050	Sequence number
obs_id	10806	Observation id
title	A Deep Chandra Observation of Supernova Remnant N49 in the LMC	Pro
observer	DR. Sangwook Park	Principal investigator
object	N49	Source name
dtcycle	0	
cycle	P	events from which exps? Prim/Second/Both
ra_targ	81.5	Observer's specified target RA [deg]
dec_targ	-66.083333	Observer's specified target Dec [deg]
ra_nom	81.494189159231	Nominal RA [deg]
dec_nom	-66.079105977659	Nominal Dec [deg]
roll_nom	87.351322224971	Nominal Roll [deg]
revision	2	Processing version of data
ontime	27904.648343861	Sum of GTIs [s]
livetime	26542.992812576	Livetime [s]
ontime7	27904.648343861	Sum of GTIs [s]
l2events	211764	Number of level 2 events



2 OBI

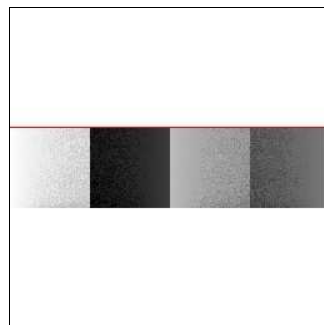
2.1 OBI

2.1.1 Images



2.1.2 Bias

Chip 7



2.1.3 Parameters

obi_num	0	Obi number	sched_exp_time	27878.000000	[s] Scheduled observation exposure time
ascdsver	8.4.5	Processing system revision	ontime	27904.648343861	Sum of GTIs [s]
caldbver	4.4.10	 	ontime7	27904.648343861	Sum of GTIs [s]
date	2012-06-13T19:48:30	Date and time of file creation	l1events	274784	Number of level 1 events
revision	2	Processing version of data			

2.1.4 Events

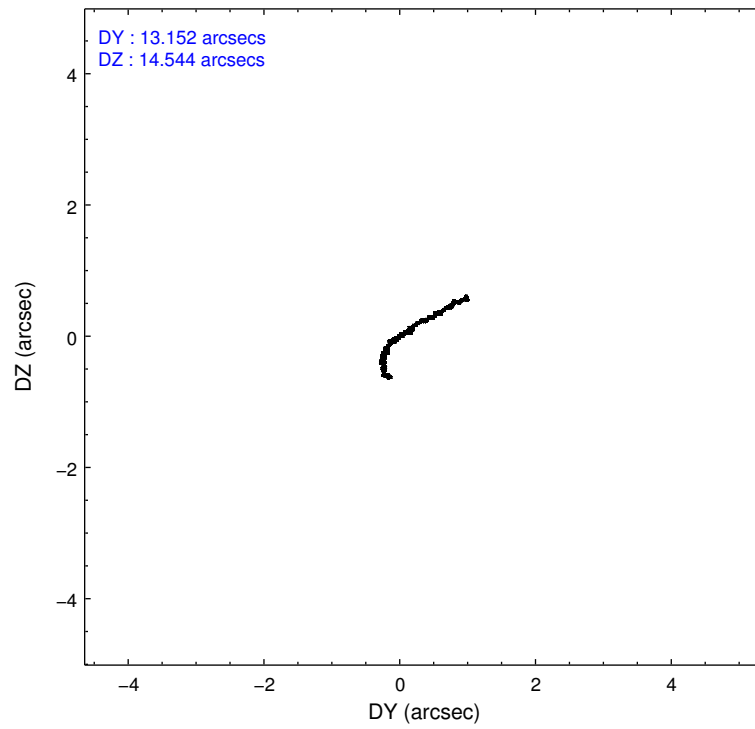
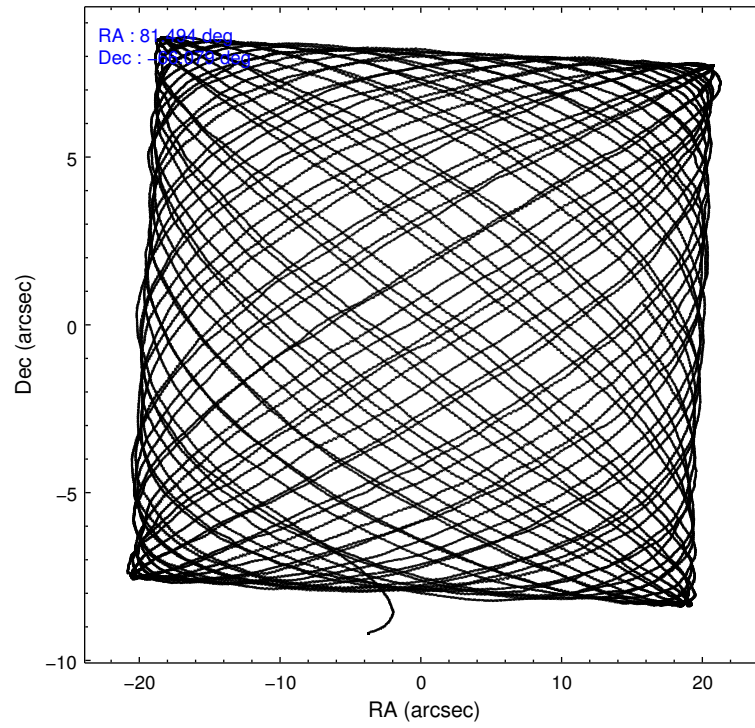
	ccd 7
level 1 events	274784
rejected events	58537
rejected %	21%

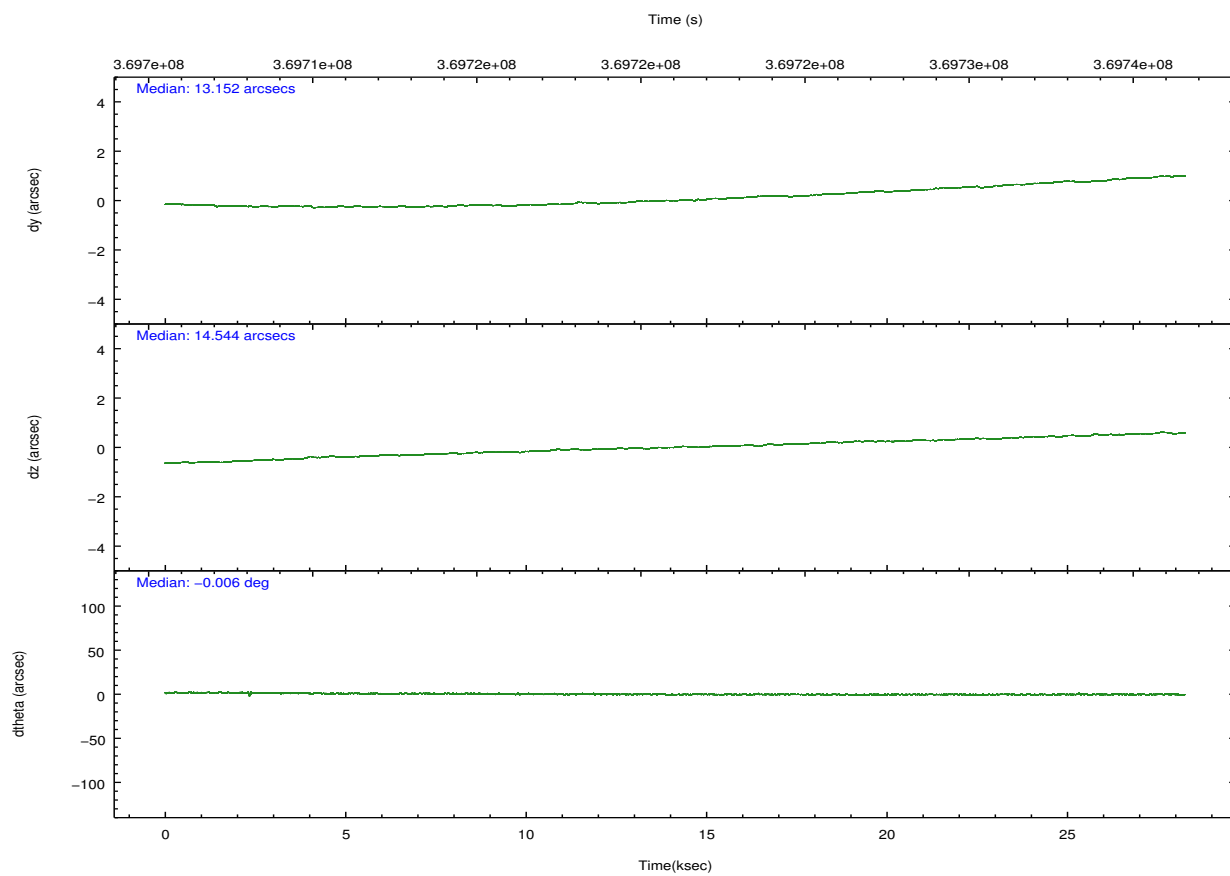
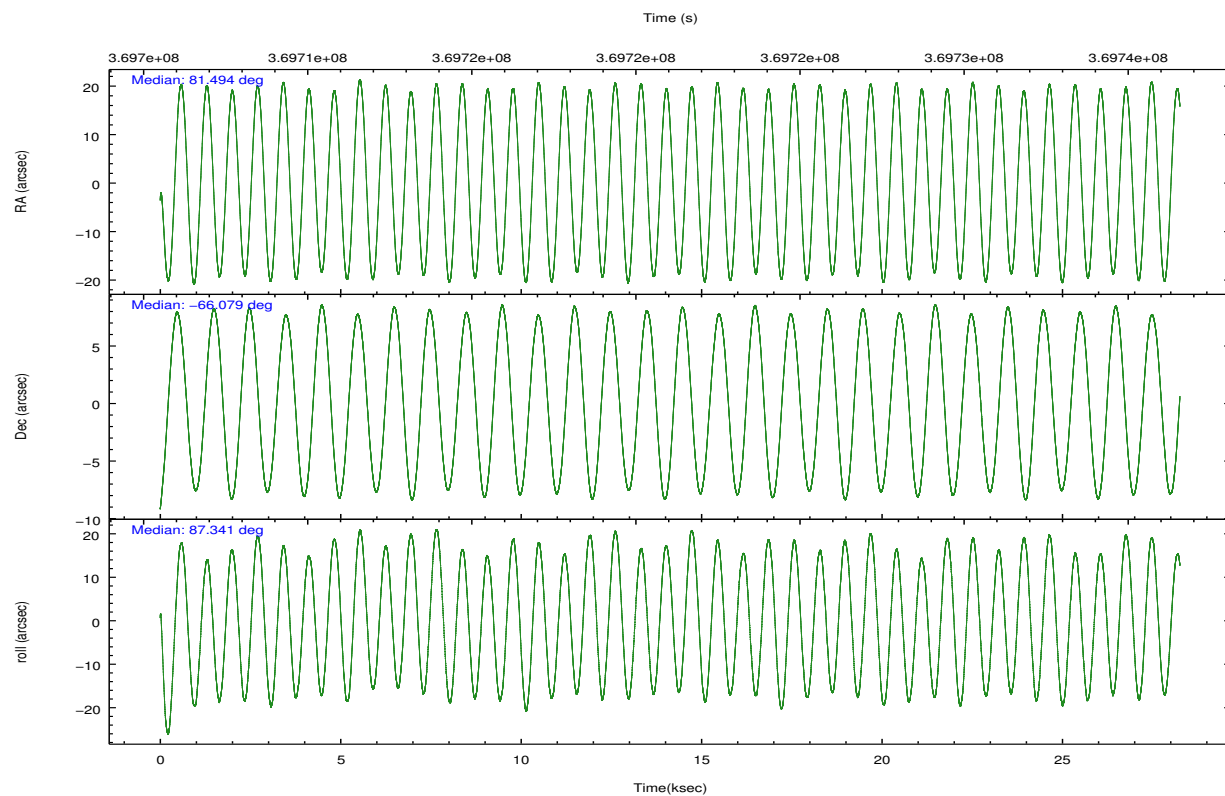
	ccd 7
grade 0 events	60124
	21%
grade 1 events	203
	0%
grade 2 events	55949
	20%
grade 3 events	25747
	9%
grade 4 events	24962
	9%
grade 5 events	11092
	4%
grade 6 events	49478
	18%
grade 7 events	47229
	17%

2.2 Compared Parameters

Parameter	Planned	Actual	Parameter	Planned	Actual
Instrument	ACIS	ACIS	Obspar format version number	7	7
Detector	ACIS-7	ACIS-7	Obspar file type	PREDICTED	ACTUAL
Grating	NONE	NONE	Obspar update status	NONE	UPDATED
Data mode	VFAINT	VFAINT	Number of optional ACIS chips dropped	0	0
Observation mode	POINTING	POINTING	On-chip summing requested	N	N
[deg] Pointing RA	81.526018	81.49418915923069	Subarray requested	CUSTOM	1/4
[deg] Pointing Dec	-66.103205	-66.07910597765864	Subarray start row	385	385
[deg] Pointing Roll	87.223788	87.35132222497109	Subarray row count	256	256
[mm] SIM focus pos	-0.684267	-0.6828225247311905	Alternating exposures requested	N	N
[mm] SIM defocus	0	0.001444936568705701	[s] Primary exposure time	0.000000	0.8
[mm] SIM translation stage pos	-190.132523	-190.1400660498719			
[mm] SIM translation stage offset	0	0.00754346686406393			
[s] Observation start time (MET)	369707287.184000	369706026.19638			
Observation start date	2009-09-19T00:27:01	2009-09-19T00:07:06			
[s] Observation end time (MET)	369735165.184000	369736014.62288			
Observation end date	2009-09-19T08:11:39	2009-09-19T08:26:54			
Read mode	TIMED	TIMED			

2.3 Aspect



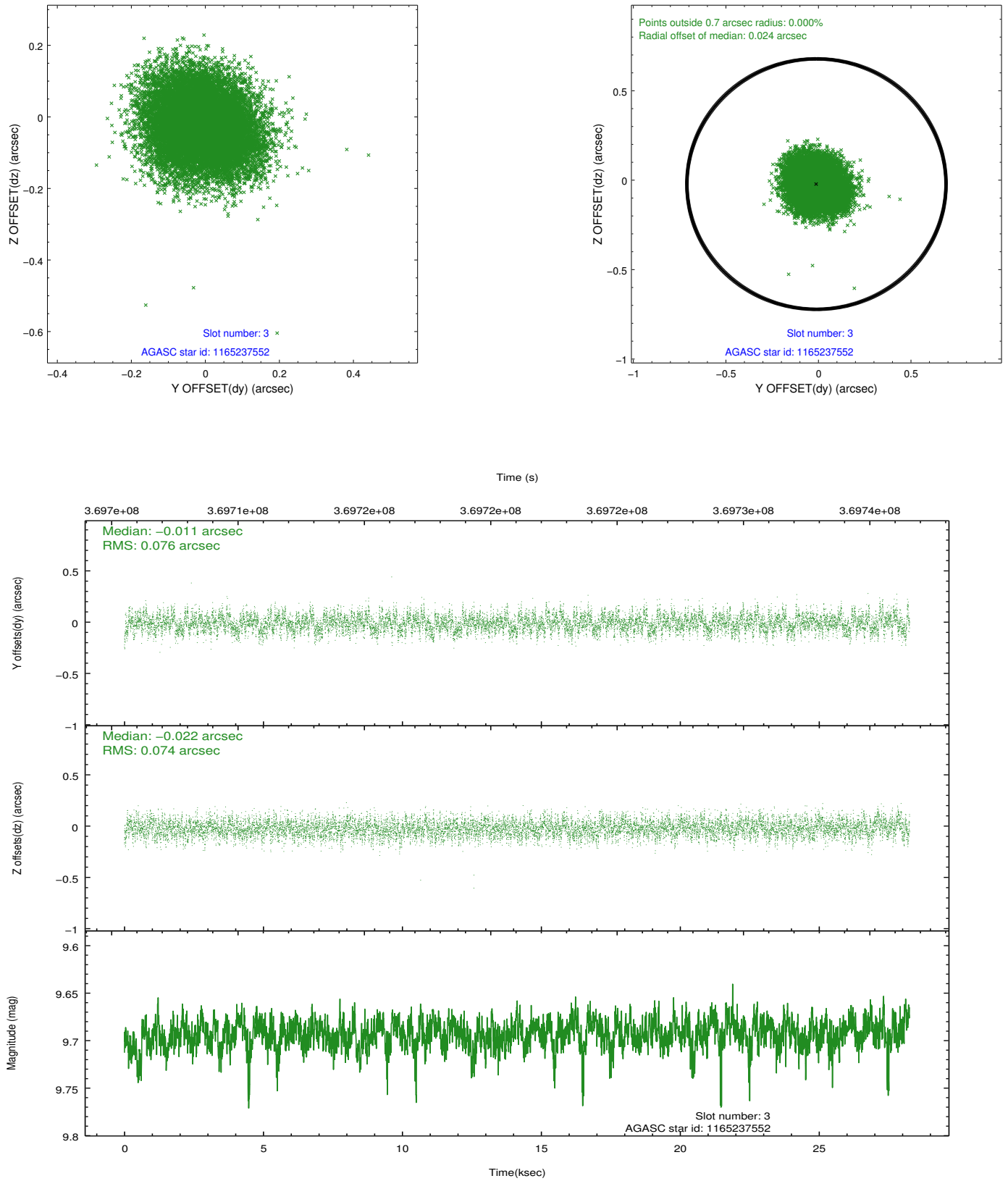


Slot Statistics

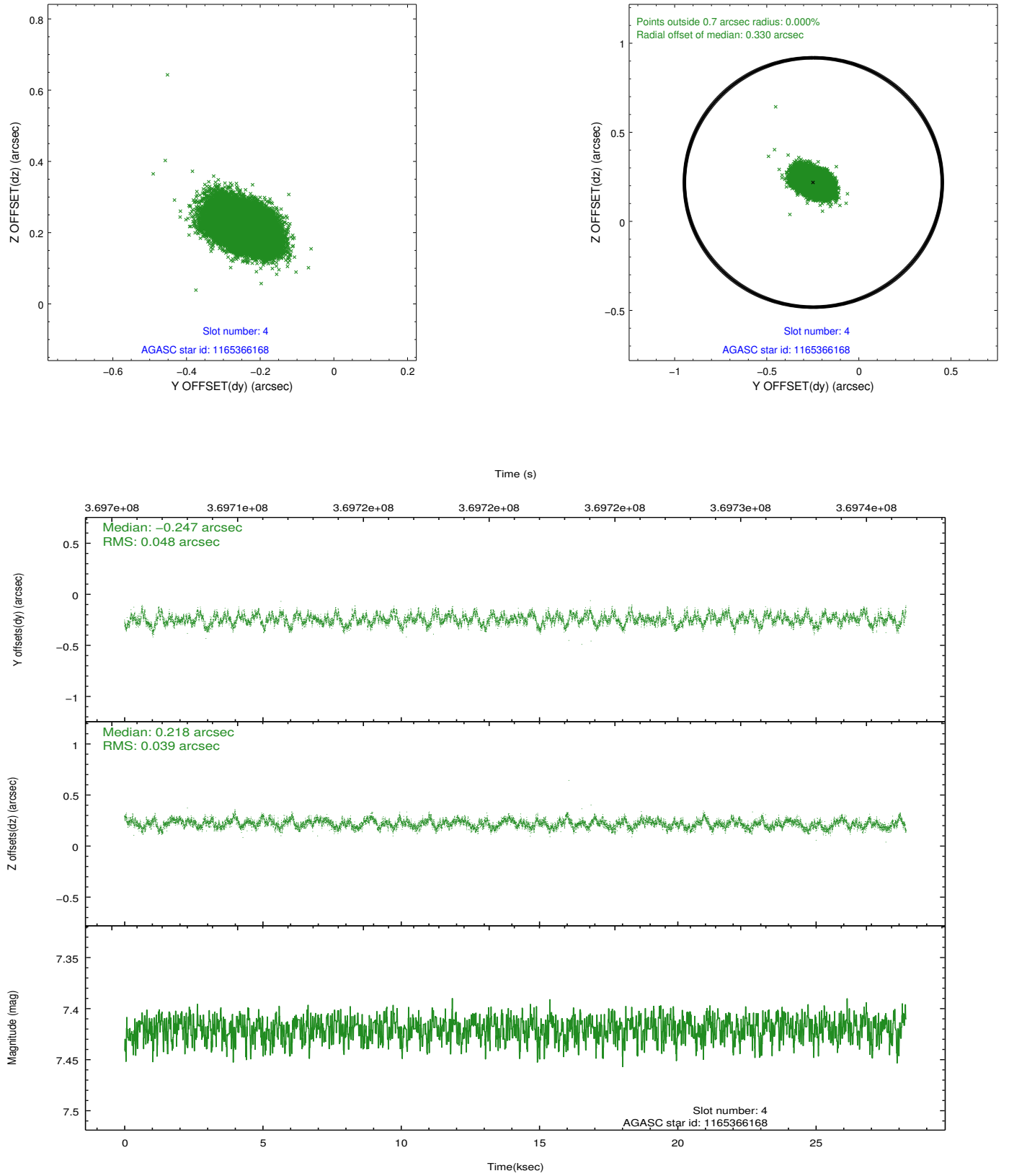
slot	status	id	mag	n_pts	med_dy	med_dz	dr1	dr2	ra	dec	mean_y	mean_z
0	FID	ACIS-S-1	6.95	6890	0.030	0.010	0.014	0.030	0.000000	0.000000	929.86	-1731.53
1	FID	ACIS-S-4	6.95	6893	0.105	-0.018	0.020	0.051	0.000000	0.000000	2147.37	172.53
2	FID	ACIS-S-5	6.98	6892	-0.165	0.021	0.012	0.030	0.000000	0.000000	-1819.12	166.21
3	GUIDE	1165237552	9.69	13764	-0.011	-0.022	0.114	0.183	80.257142	-65.800667	978.15	1922.31
4	GUIDE	1165366168	7.42	13781	-0.247	0.218	0.066	0.108	83.133276	-65.825610	1083.36	-2318.68
5	GUIDE	1165382424	8.37	13779	0.135	-0.046	0.089	0.141	82.355152	-66.439036	-1157.01	-1250.92
6	GUIDE	1165235856	8.25	13778	0.060	-0.124	0.073	0.117	79.957487	-66.443092	-1359.93	2192.99
7	GUIDE	1165374200	9.85	13760	0.054	-0.030	0.158	0.278	83.207893	-65.682736	1599.99	-2417.85

2.4 Star Slots

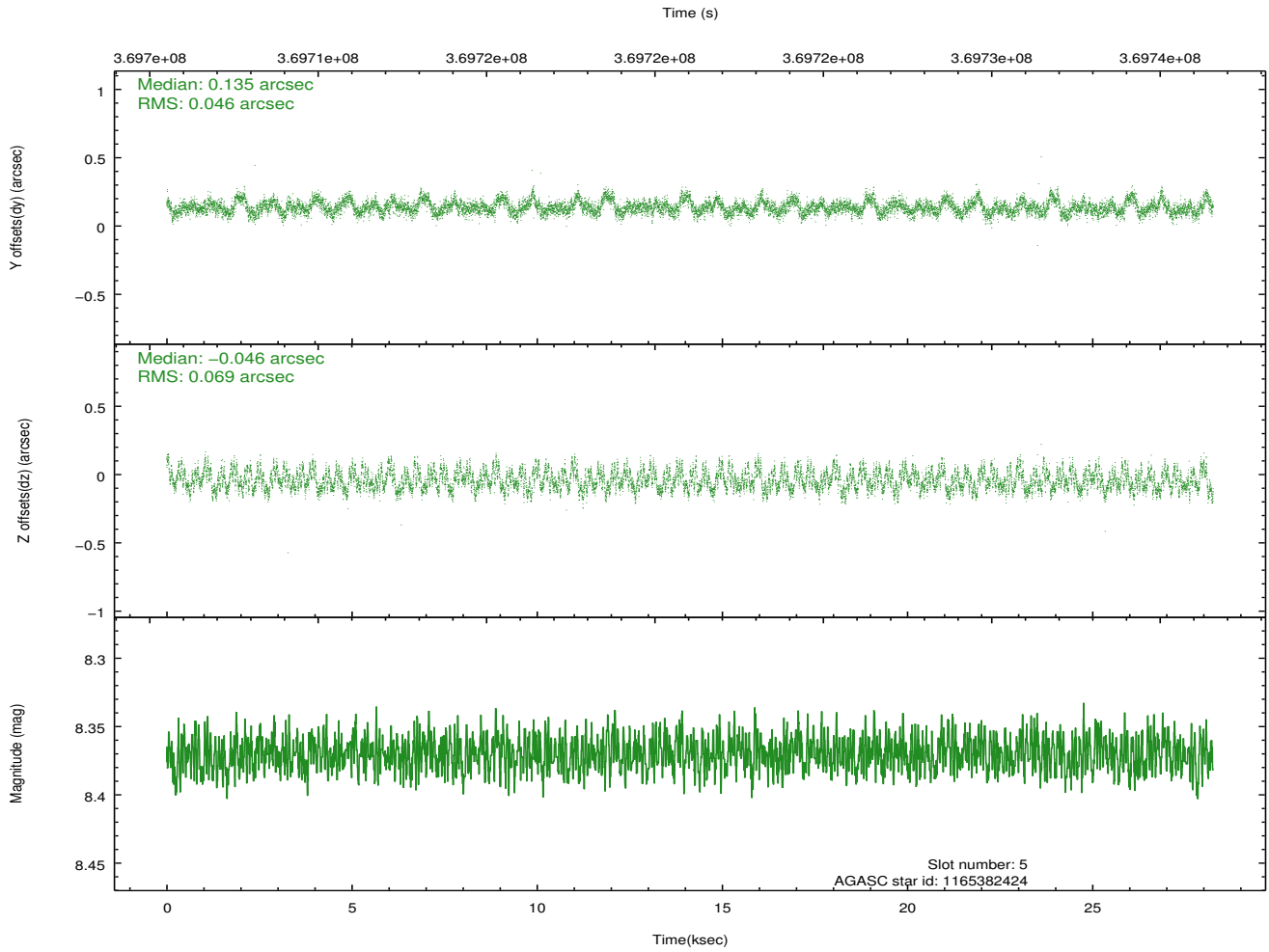
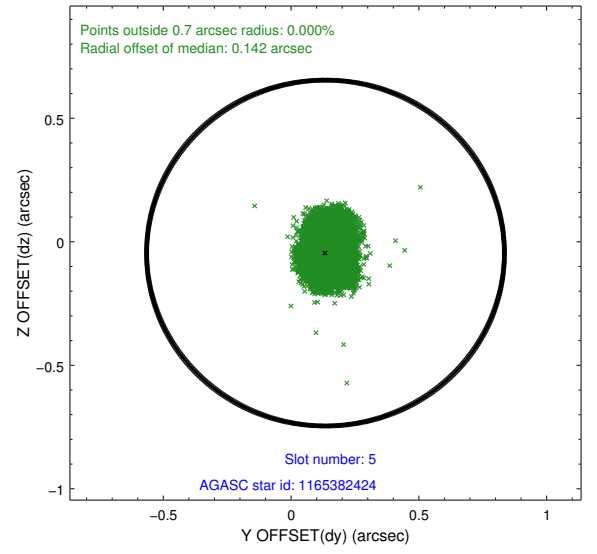
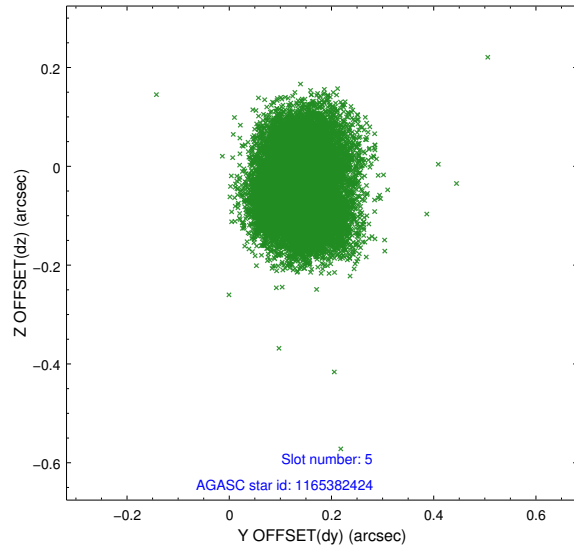
2.4.1 Slot 3



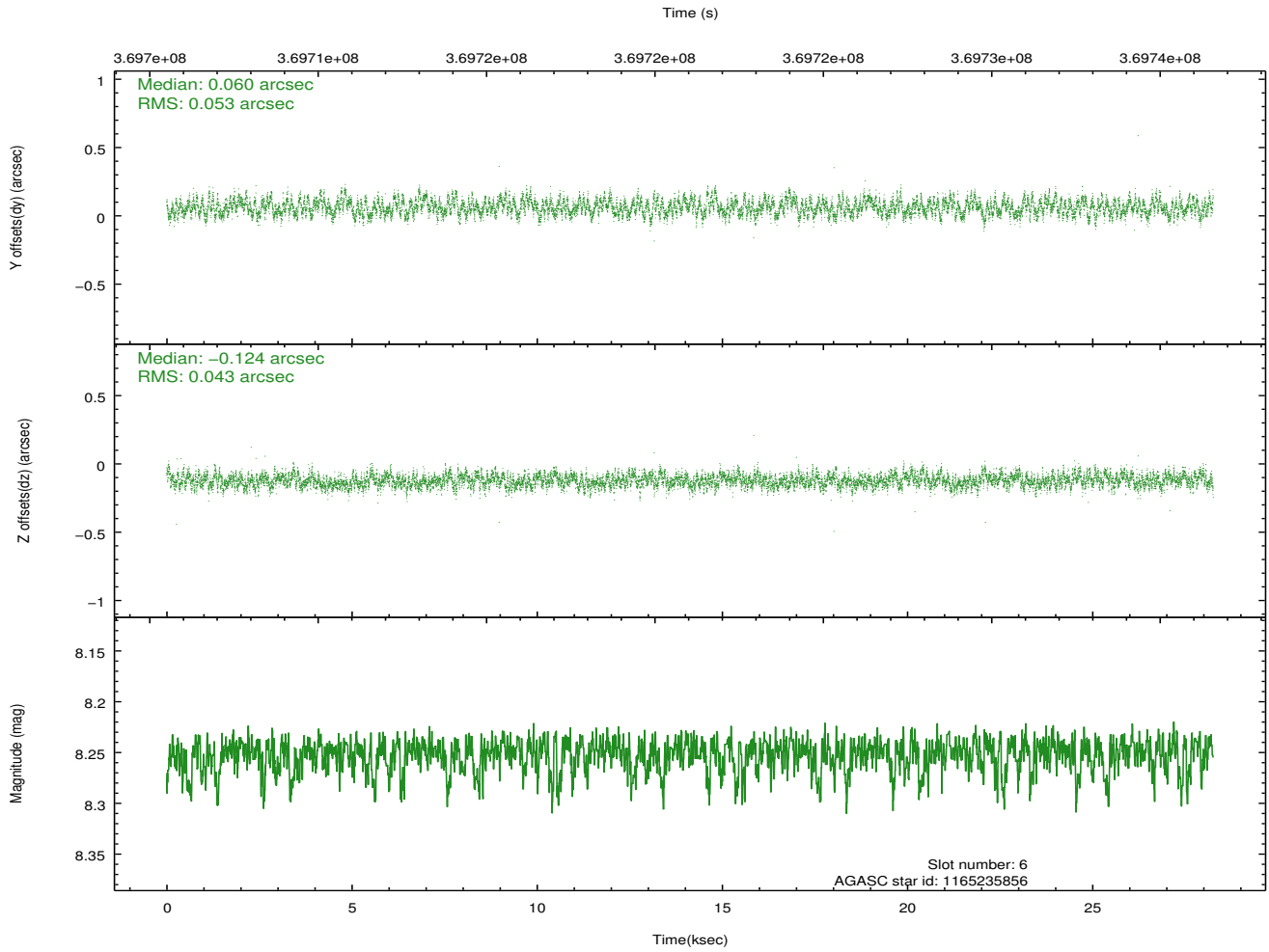
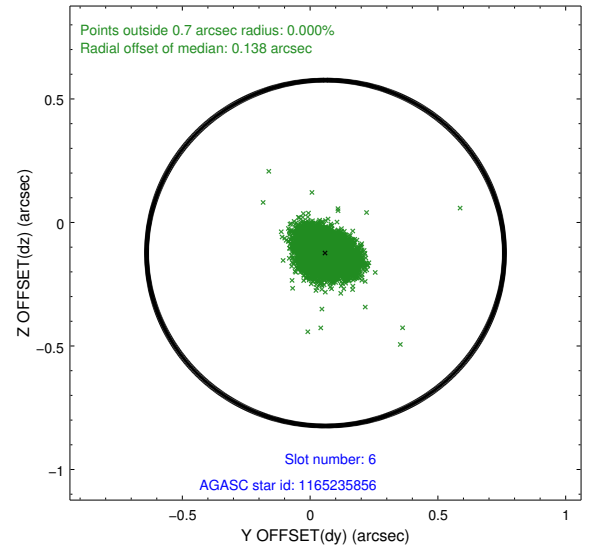
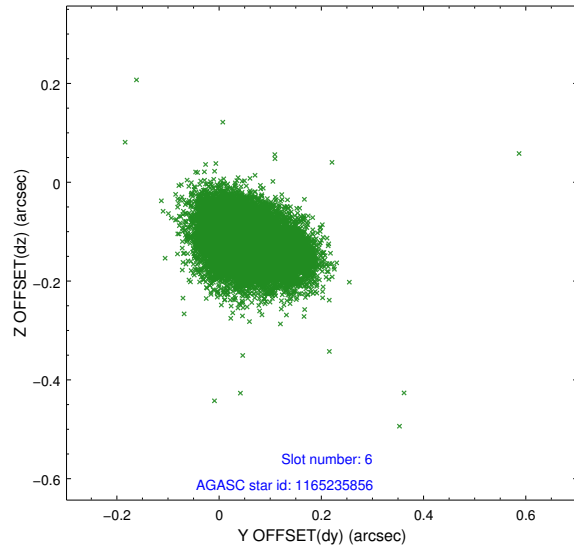
2.4.2 Slot 4



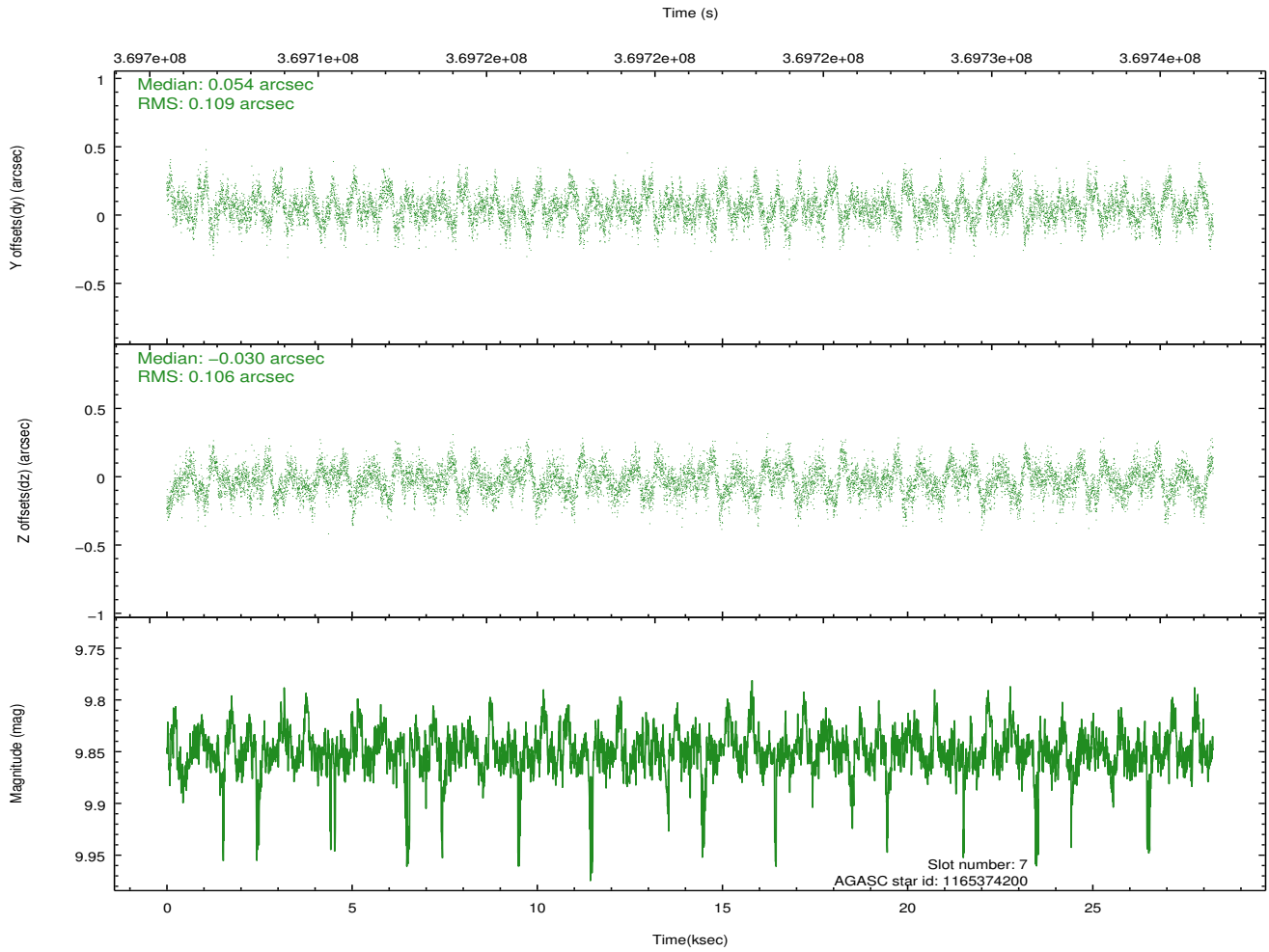
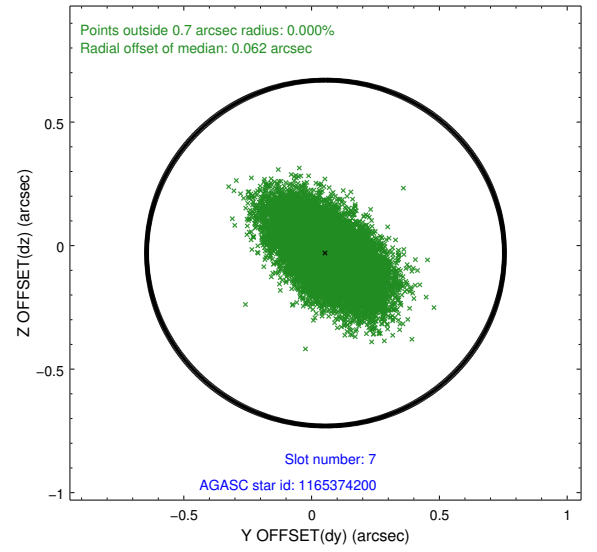
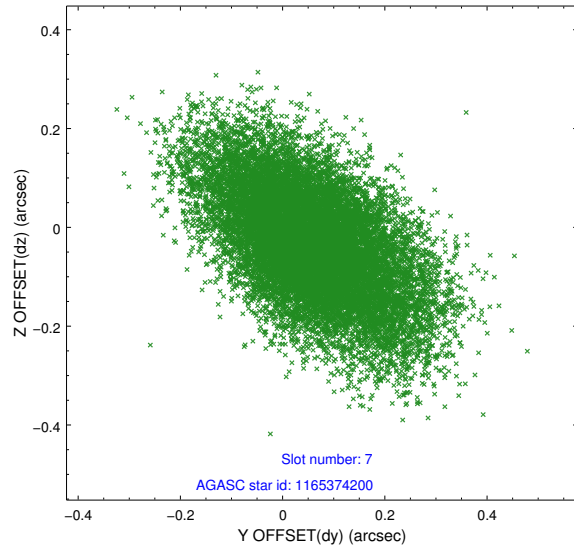
2.4.3 Slot 5



2.4.4 Slot 6

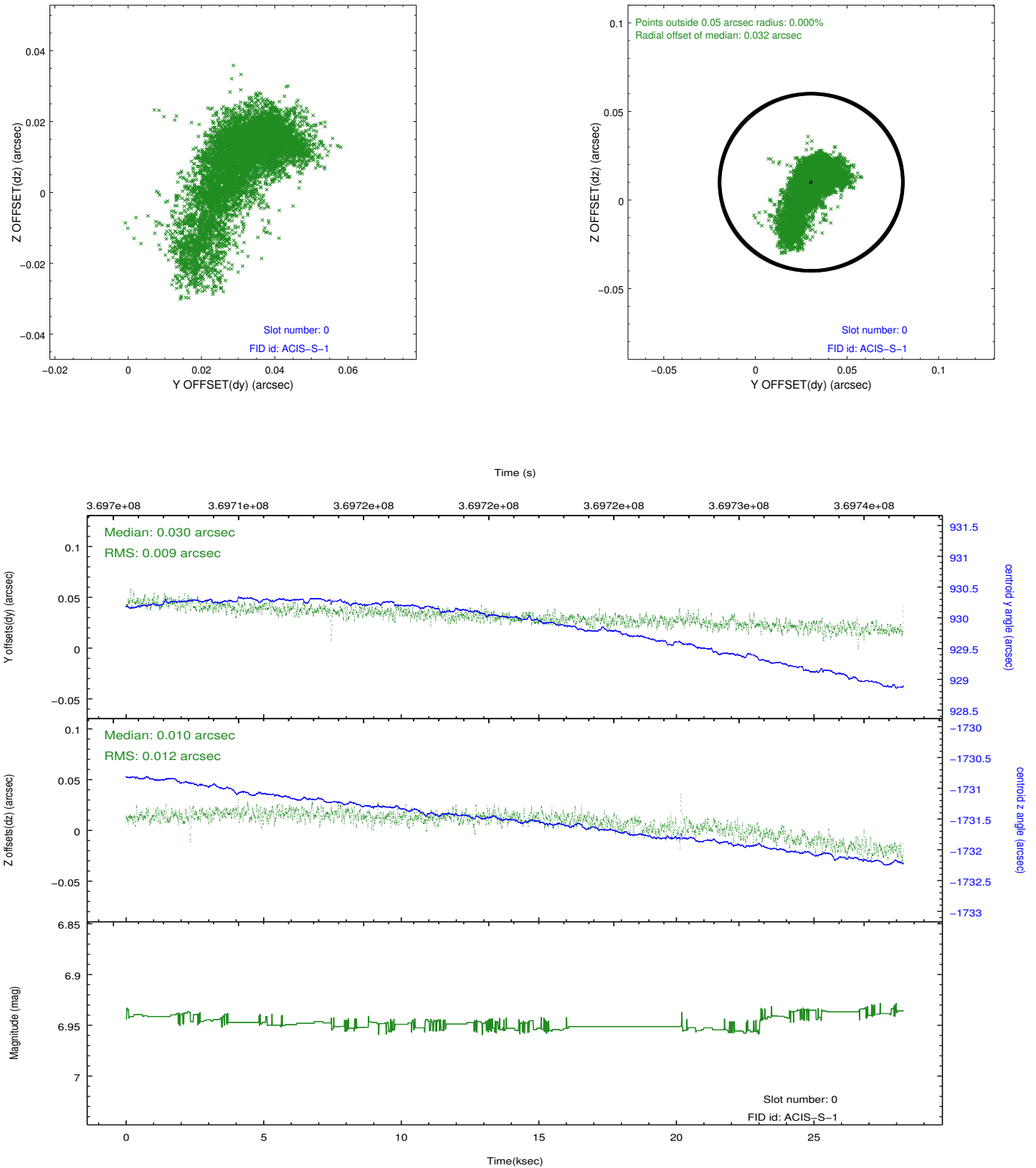


2.4.5 Slot 7

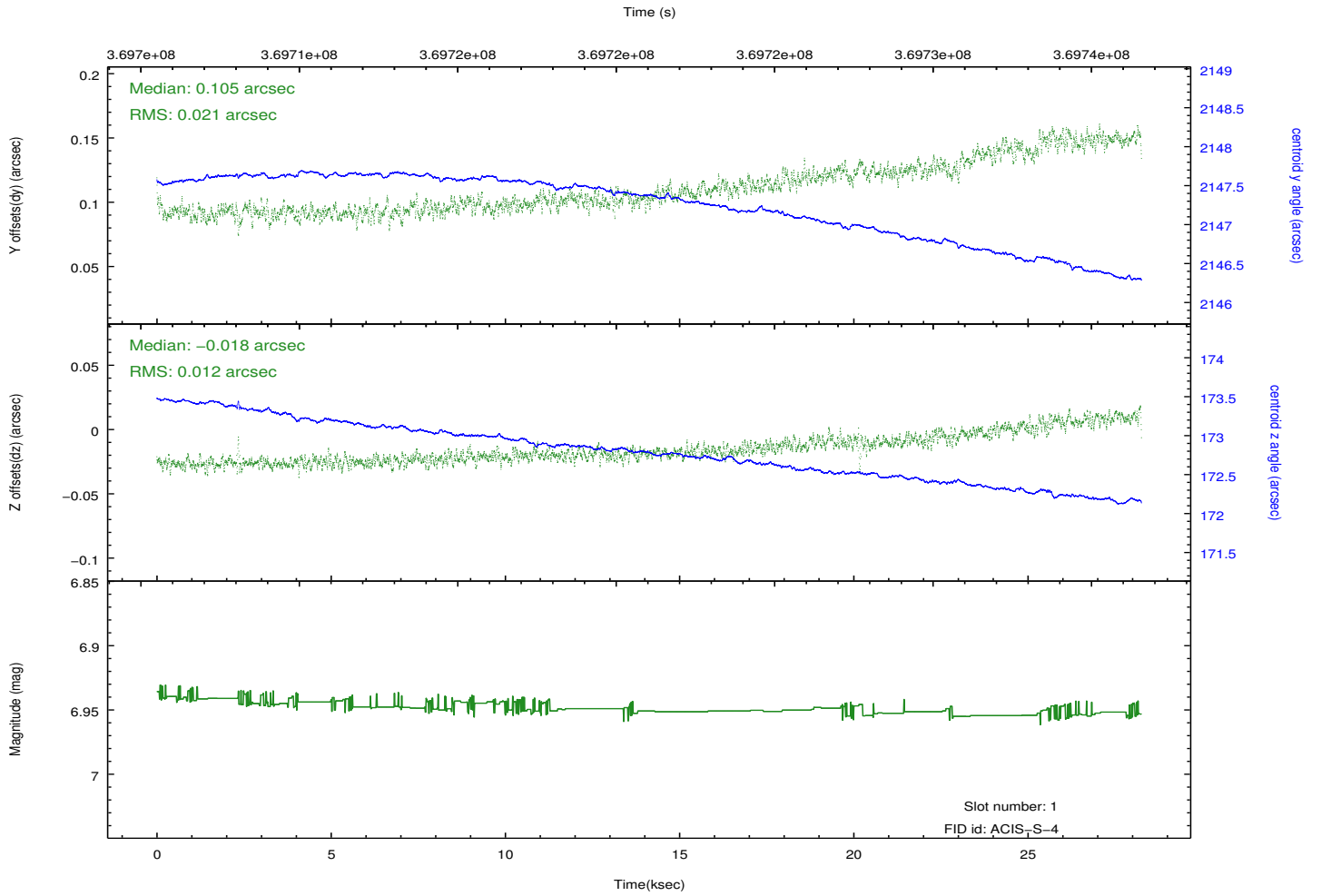
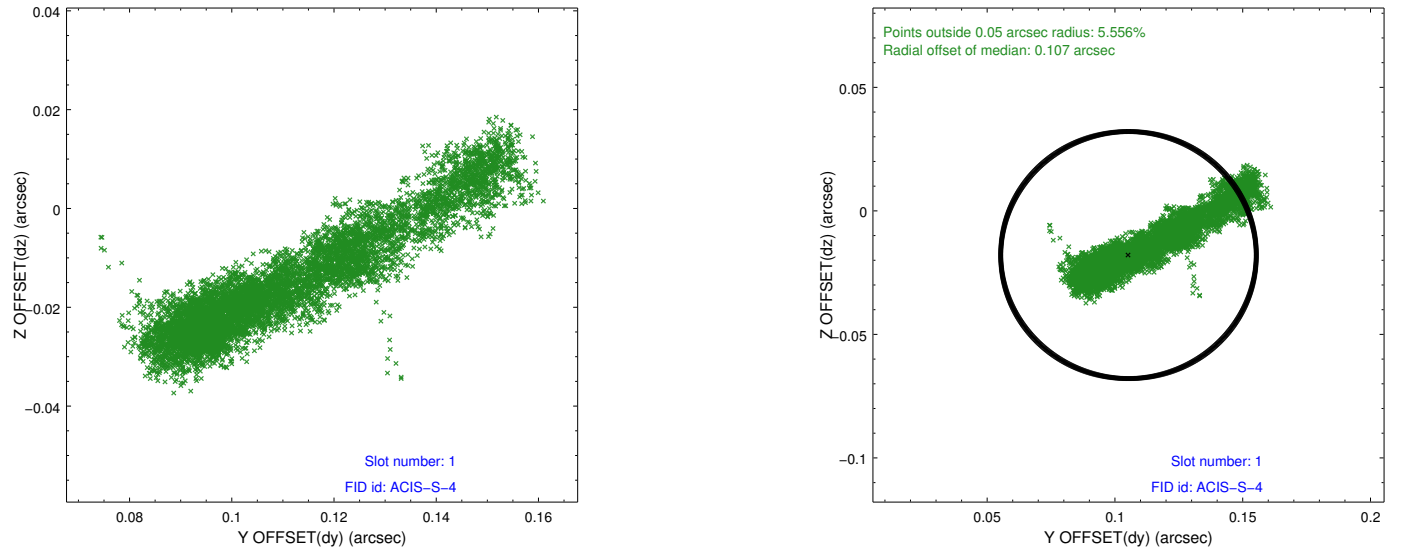


2.5 FID Slots

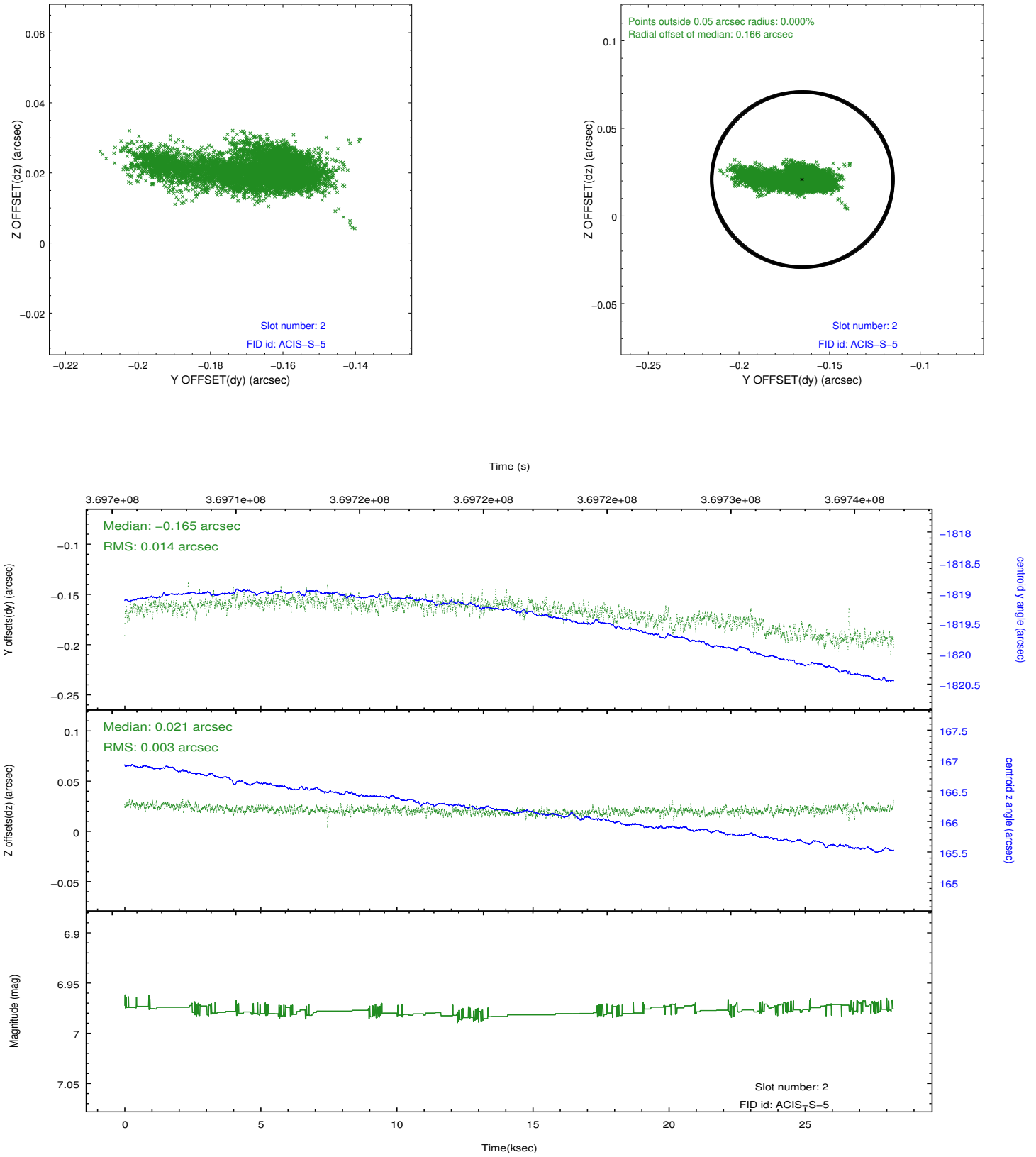
2.5.1 Slot 0



2.5.2 Slot 1



2.5.3 Slot 2



A Summary

A.1 Status

V&V Scientist	Jen Lauer
V&V Date (YYYY-MM-DD)	2012.06.18
V&V Edition	1
V&V Disposition and Status	OK
V&V Charge Time	27.904800415874

A.2 Comments