

V&V Reference Report

L2 ASCDS Version : 8.4.5

Observation 10496 - L2 Version 2
Chandra X-Ray Center

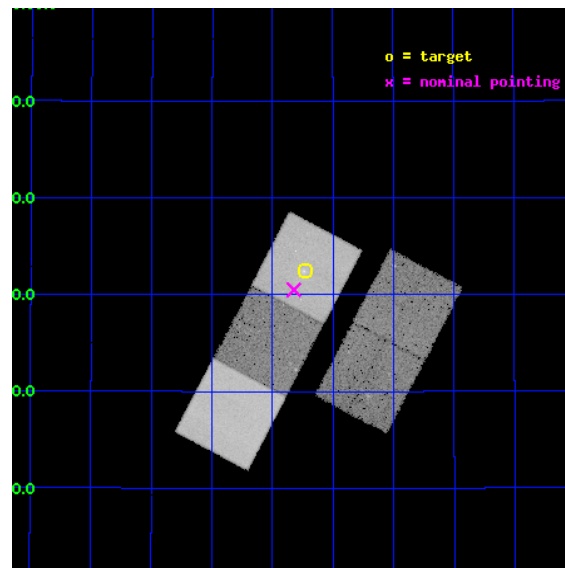
L2 Processing Date : Jun 13 2012

Contents

1	Front	2
2	OBI	3
2.1	OBI	3
2.1.1	Images	3
2.1.2	Bias	3
2.1.3	Parameters	4
2.1.4	Events	4
2.2	Compared Parameters	5
2.3	Aspect	6
2.4	Star Slots	9
2.4.1	Slot 3	9
2.4.2	Slot 4	10
2.4.3	Slot 5	11
2.4.4	Slot 6	12
2.4.5	Slot 7	13
2.5	FID Slots	14
2.5.1	Slot 0	14
2.5.2	Slot 1	15
2.5.3	Slot 2	16
A	Summary	17
A.1	Status	17
A.2	Comments	17

1 Front

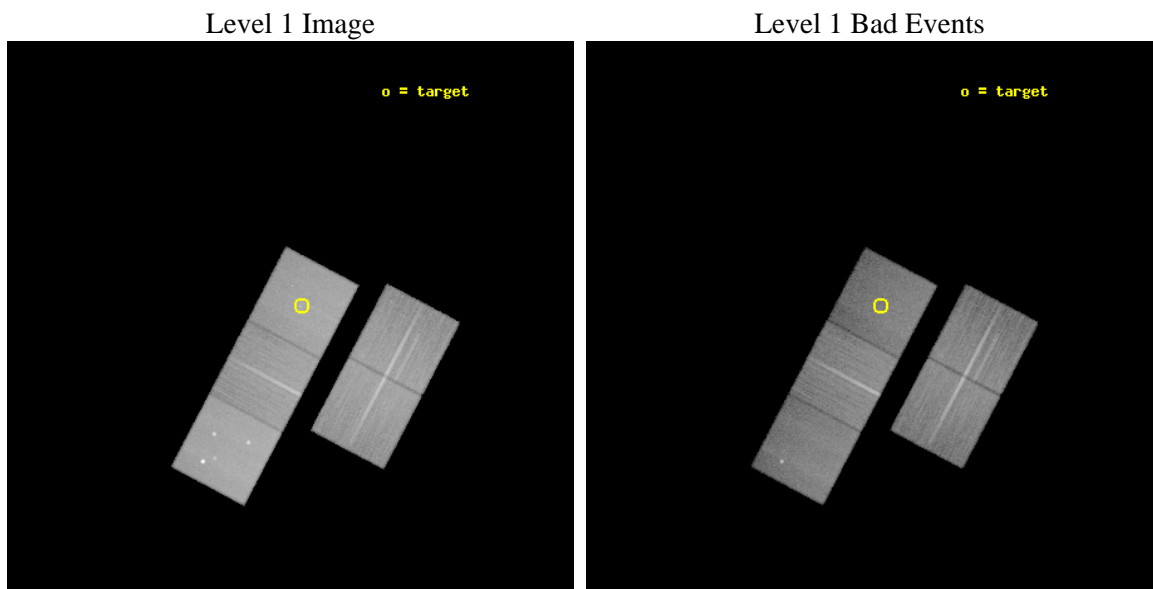
seq_num	900867	Sequence number
obs_id	10496	Observation id
title	Understanding Group Evolution with Chandra	Proposal title
observer	Dr. Eric Miller	Principal investigator
object	Bootes Group 39	Source name
dtcycle	0	
cycle	P	events from which exps? Prim/Second/Both
ra_targ	217.8075	Observer's specified target RA [deg]
dec_targ	32.540389	Observer's specified target Dec [deg]
ra_nom	217.83077054938	Nominal RA [deg]
dec_nom	32.508384942243	Nominal Dec [deg]
roll_nom	297.7690594028	Nominal Roll [deg]
revision	2	Processing version of data
ontime	29140.000224113	Sum of GTIs [s]
livetime	28759.264668629	Livetime [s]
ontime2	29133.718283415	Sum of GTIs [s]
ontime3	29130.577323139	Sum of GTIs [s]
ontime5	29140.000224113	Sum of GTIs [s]
ontime6	29133.718433022	Sum of GTIs [s]
ontime7	29140.000224113	Sum of GTIs [s]
l2events	356530	Number of level 2 events



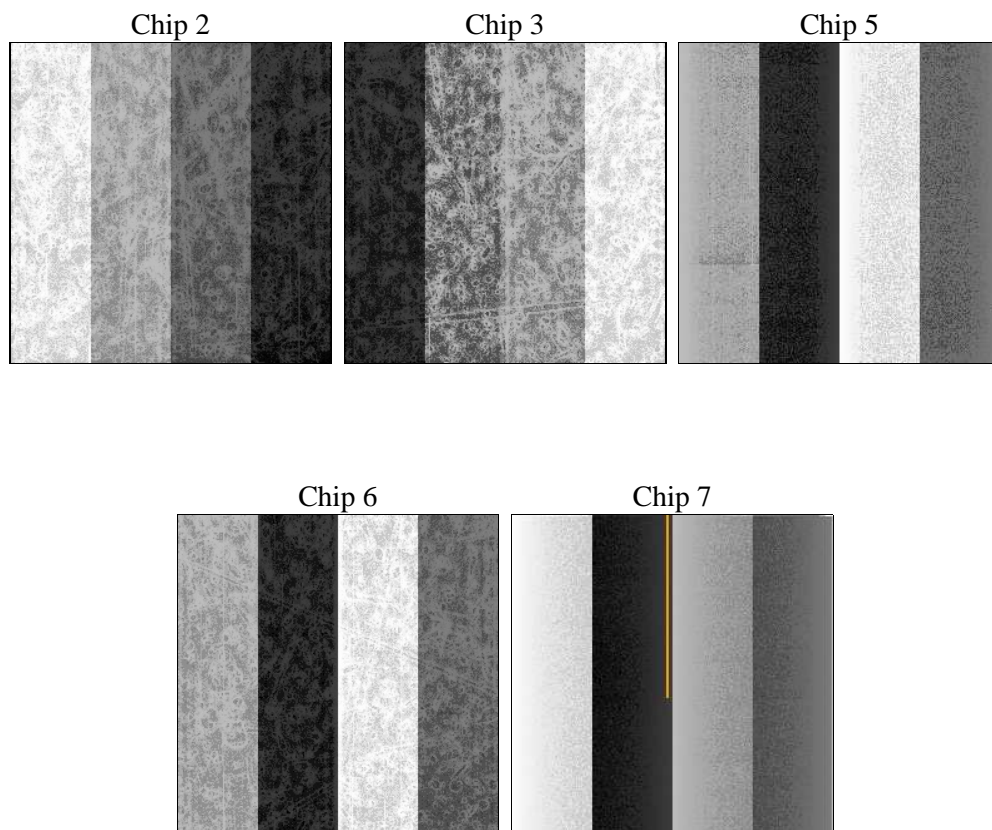
2 OBI

2.1 OBI

2.1.1 Images



2.1.2 Bias



2.1.3 Parameters

obi_num	0	Obi number	sched_exp_time	29000.000000	[s] Scheduled observation exposure time
ascdsver	8.4.5	Processing system revision	ontime	29140.000224113	Sum of GTIs [s]
caldsver	4.4.10	 	ontime2	29133.718283415	Sum of GTIs [s]
date	2012-06-13T19:55:24	Date and time of file creation	ontime3	29130.577323139	Sum of GTIs [s]
revision	2	Processing version of data	ontime5	29140.000224113	Sum of GTIs [s]
			ontime6	29133.718433022	Sum of GTIs [s]
			ontime7	29140.000224113	Sum of GTIs [s]
			l1events	1413680	Number of level 1 events

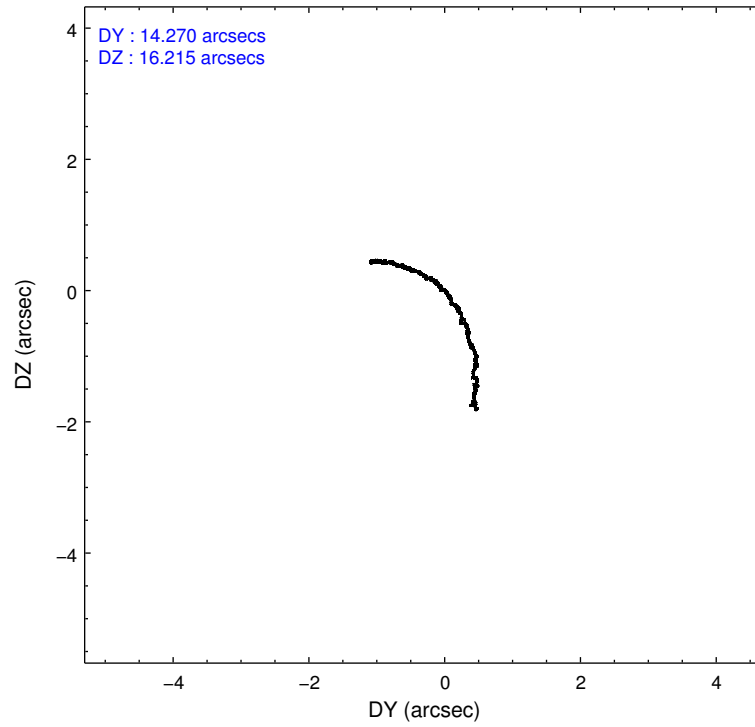
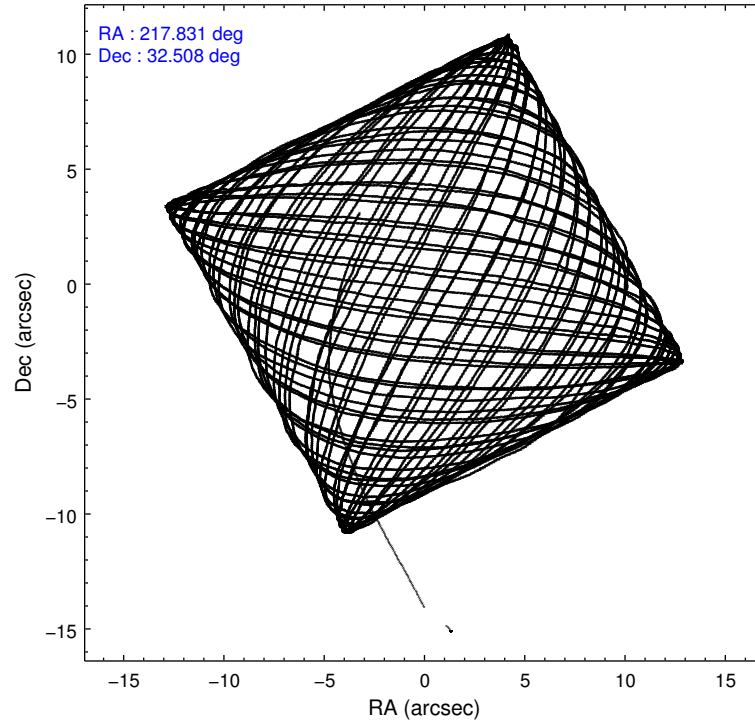
2.1.4 Events

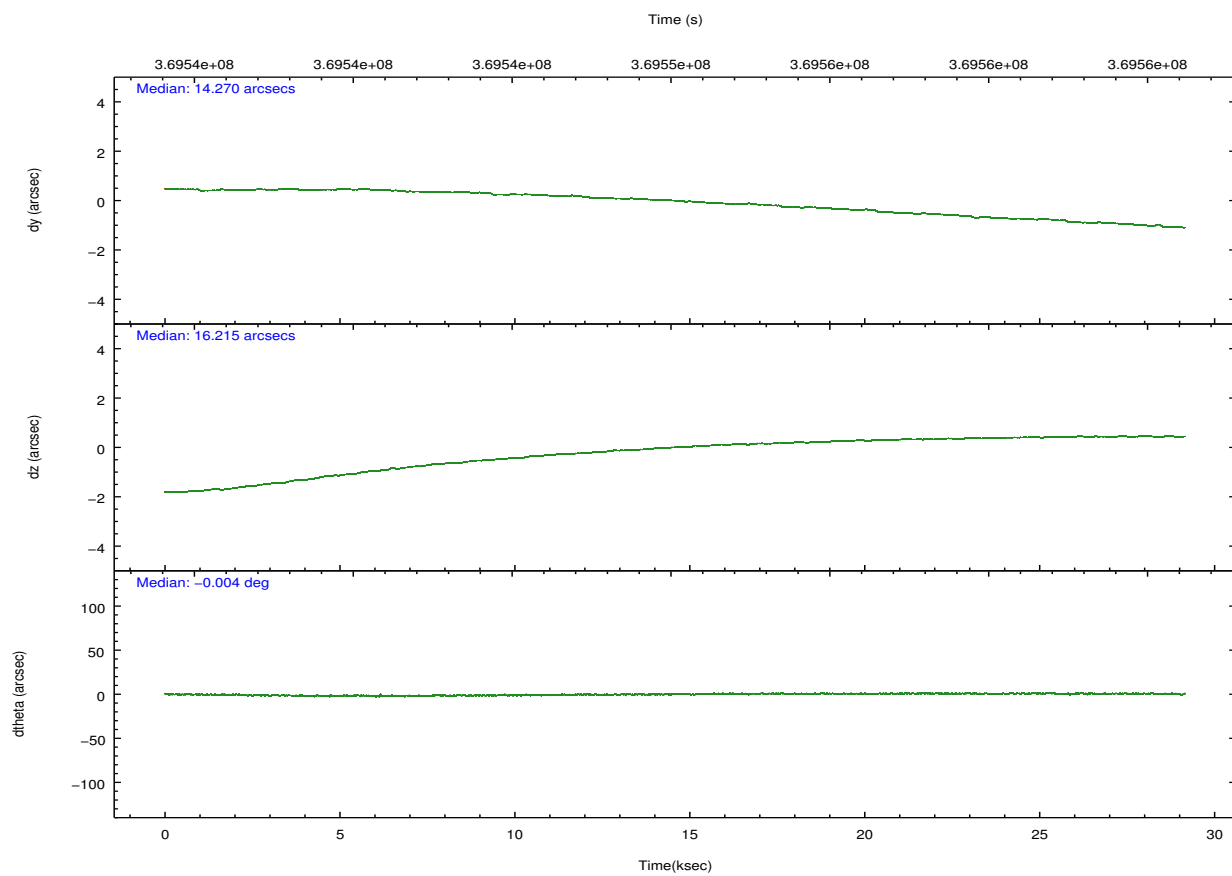
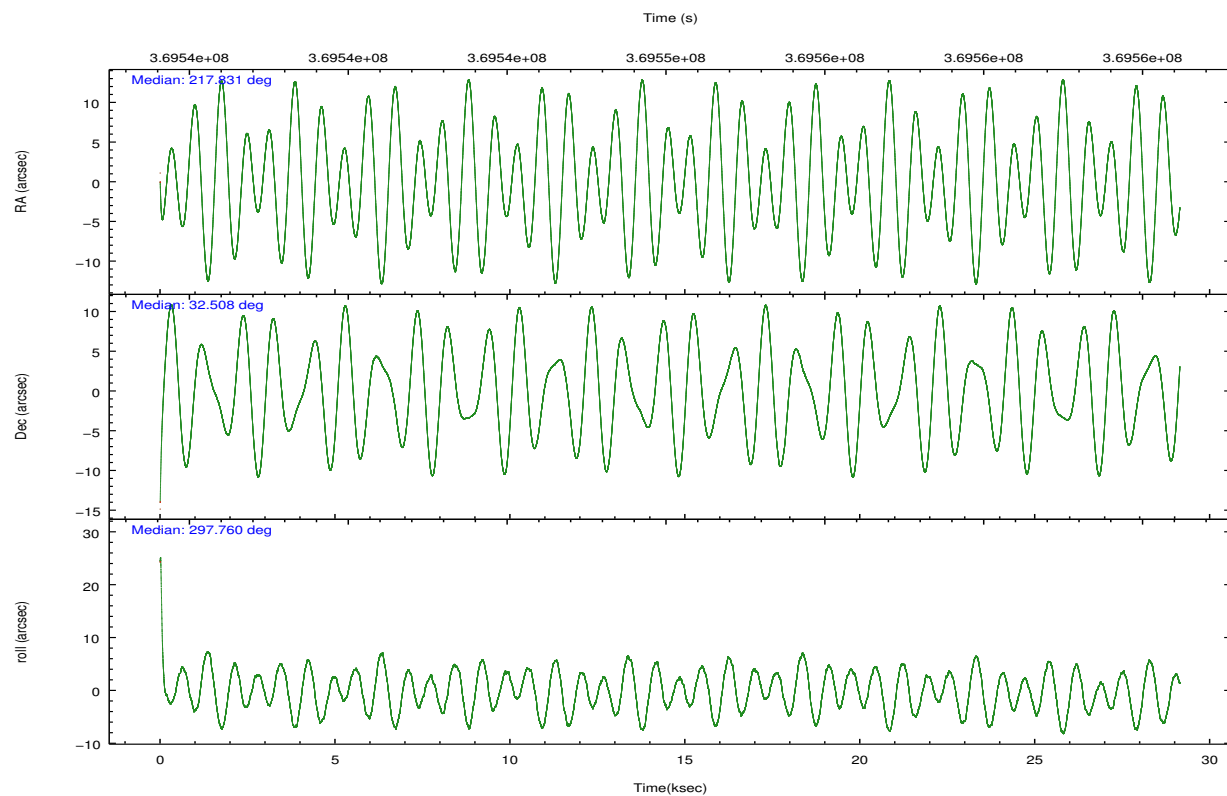
	ccd 2	ccd 3	ccd 5	ccd 6	ccd 7		ccd 2	ccd 3	ccd 5	ccd 6	ccd 7
level 1 events	254883	239229	368479	259651	291438	grade 0 events	8964	8342	19745	9330	13247
rejected events	230406	215771	185438	233271	160028		3%	3%	5%	3%	4%
rejected %	90%	90%	50%	89%	54%	grade 1 events	160	157	1709	135	381
							0%	0%	0%	0%	0%
						grade 2 events	6105	5337	59296	6101	27724
							2%	2%	16%	2%	9%
						grade 3 events	2578	2655	7236	2954	11982
							1%	1%	1%	1%	4%
						grade 4 events	2734	2592	7056	2874	11868
							1%	1%	1%	1%	4%
						grade 5 events	8217	10183	28593	10533	30329
							3%	4%	7%	4%	10%
						grade 6 events	4610	5000	93667	5666	69235
							1%	2%	25%	2%	23%
						grade 7 events	221515	204963	151177	222058	126672
							86%	85%	41%	85%	43%

2.2 Compared Parameters

Parameter	Planned	Actual	Parameter	Planned	Actual
Instrument	ACIS	ACIS	Obspar format version number	7	7
Detector	ACIS-23567	ACIS-23567	Obspar file type	PREDICTED	ACTUAL
Grating	NONE	NONE	Obspar update status	NONE	UPDATED
Data mode	VFAINT	VFAINT	CCD I0 on	N	N
Observation mode	POINTING	POINTING	CCD I1 on	N	N
[deg] Pointing RA	217.803117	217.830770549379	CCD I2 on	O1	Y
[deg] Pointing Dec	32.522655	32.50838494224318	CCD I3 on	O2	Y
[deg] Pointing Roll	297.627284	297.7690594027982	CCD S0 on	N	N
[mm] SIM focus pos	-0.684267	-0.6828225247311905	CCD S1 on	Y	Y
[mm] SIM defocus	0	0.001444936568705701	CCD S2 on	Y	Y
[mm] SIM translation stage pos	-190.132523	-190.1425803651734	CCD S3 on	Y	Y
[mm] SIM translation stage offset	0	0.01005778216563158	CCD S4 on	N	N
[s] Observation start time (MET)	369535704.184000	369534425.30027	CCD S5 on	N	N
Observation start date	2009-09-17T00:47:18	2009-09-17T00:27:05	Number of optional ACIS chips dropped	0	0
[s] Observation end time (MET)	369564704.184000	369565731.36434	On-chip summing requested	N	N
Observation end date	2009-09-17T08:50:38	2009-09-17T09:08:51	Subarray requested	NONE	NONE
Read mode	TIMED	TIMED	Alternating exposures requested	N	N
			[s] Primary exposure time	0.000000	3.1

2.3 Aspect



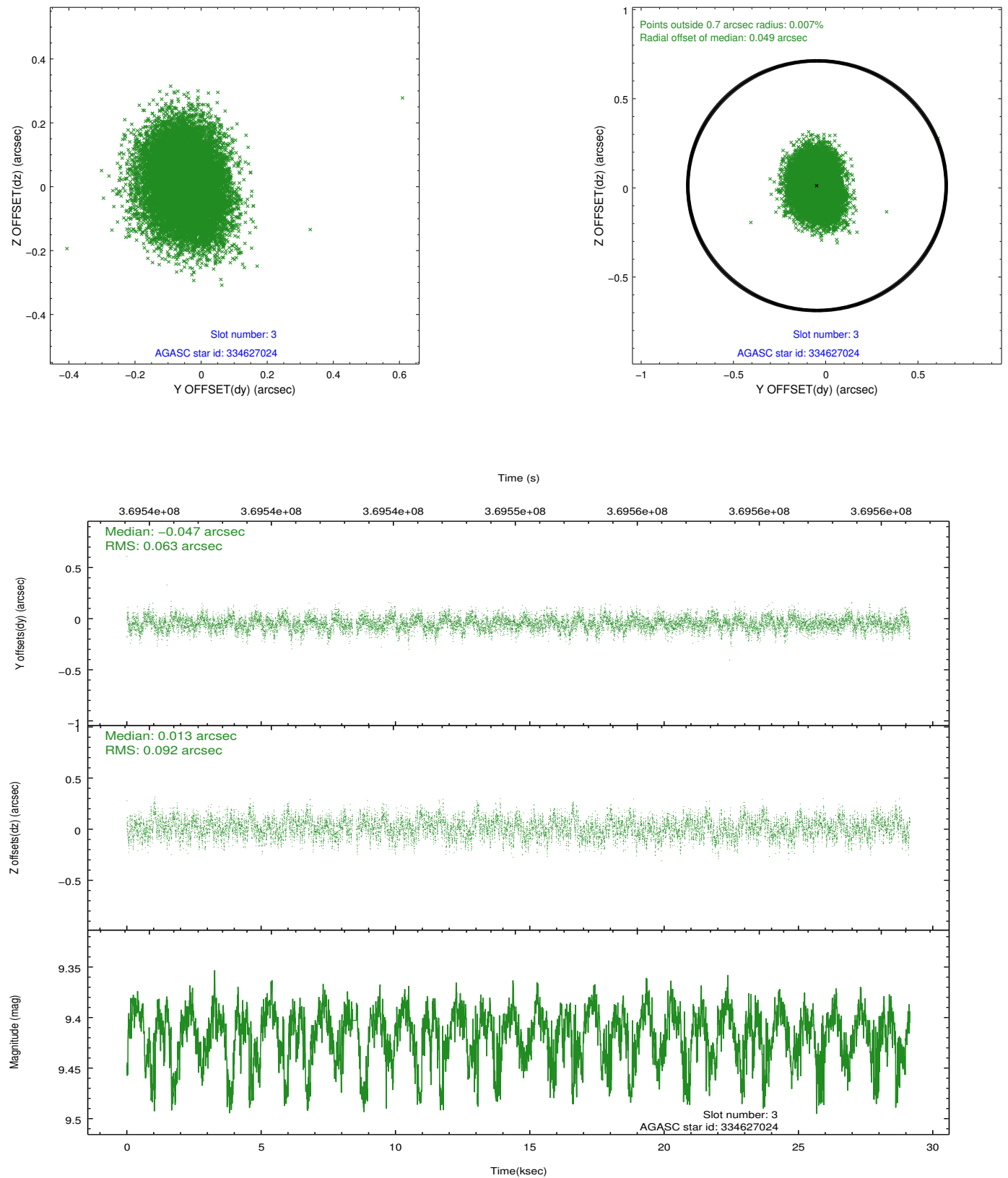


Slot Statistics

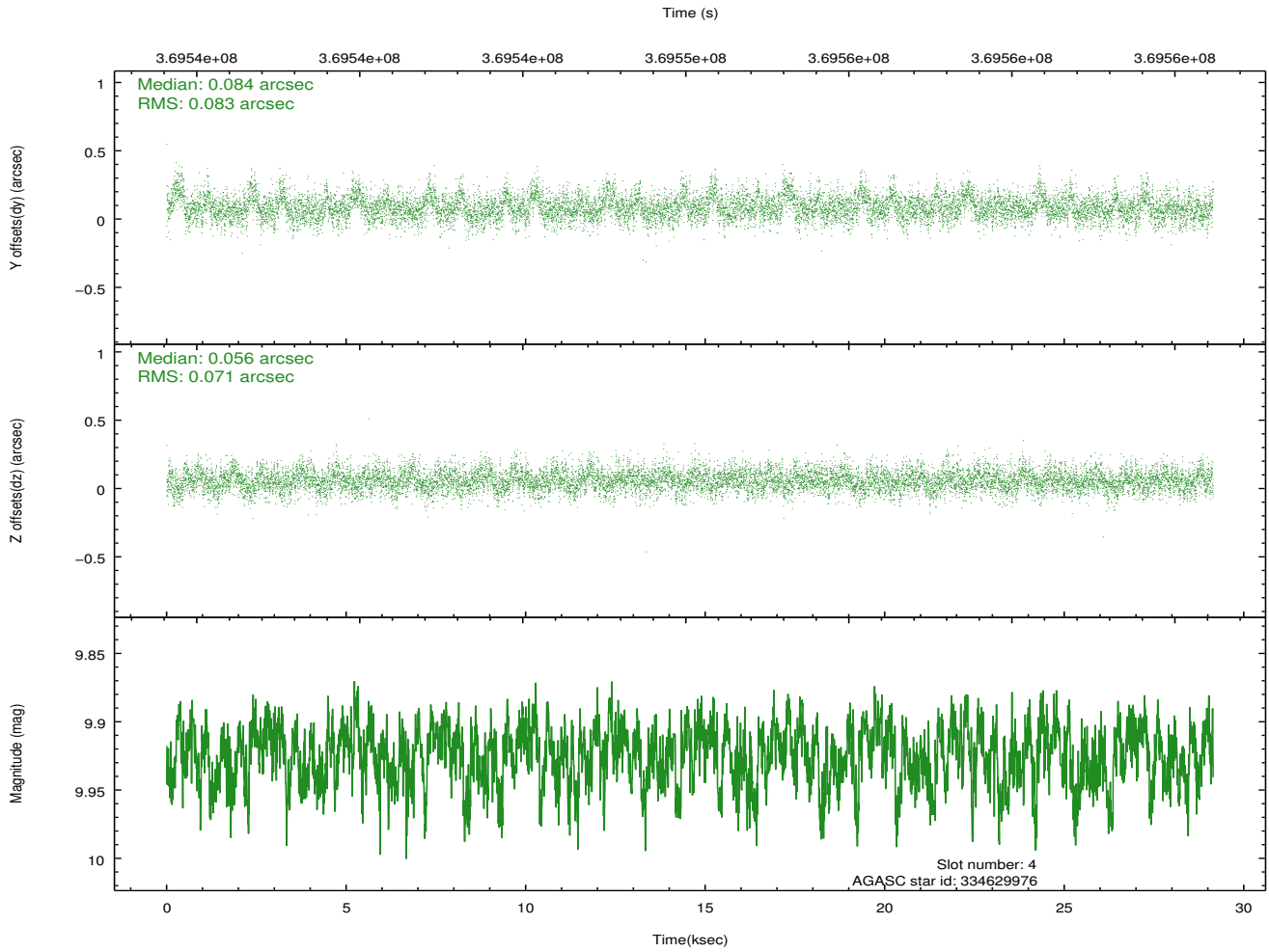
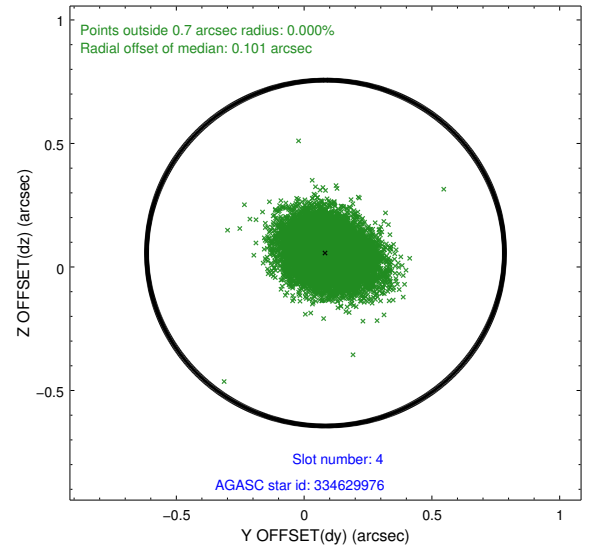
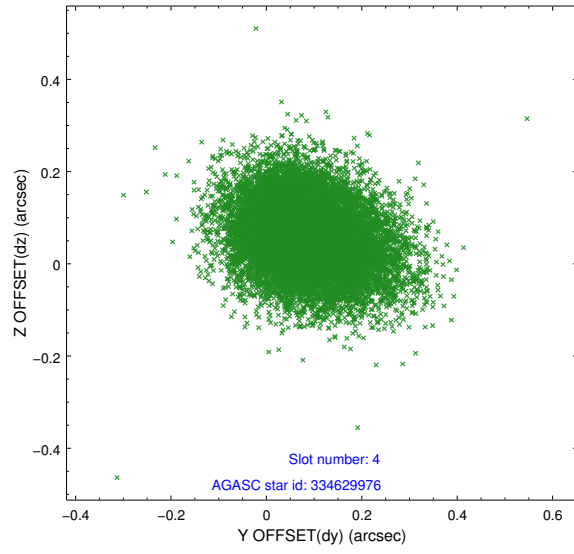
slot	status	id	mag	n_pts	med_dy	med_dz	dr1	dr2	ra	dec	mean_y	mean_z
0	FID	ACIS-S-2	6.89	7110	-0.071	-0.025	0.026	0.037	0.000000	0.000000	-767.16	-1737.33
1	FID	ACIS-S-4	6.97	7110	0.208	0.040	0.017	0.042	0.000000	0.000000	2146.34	171.15
2	FID	ACIS-S-5	7.00	7110	-0.165	-0.004	0.019	0.027	0.000000	0.000000	-1820.01	164.85
3	GUIDE	334627024	9.41	14138	-0.047	0.013	0.119	0.194	217.318801	32.278221	93.93	-1712.06
4	GUIDE	334629976	9.92	14195	0.084	0.056	0.115	0.193	217.912342	31.982896	1876.75	-605.09
5	GUIDE	334632896	9.65	14145	-0.003	-0.067	0.128	0.207	217.366197	31.879526	1430.93	-2255.14
6	GUIDE	335027640	9.10	14206	0.013	0.002	0.098	0.161	218.092211	33.193770	-1737.62	1892.54
7	GUIDE	335029384	8.49	14210	-0.046	-0.006	0.073	0.115	217.848061	33.088477	-1741.48	1065.01

2.4 Star Slots

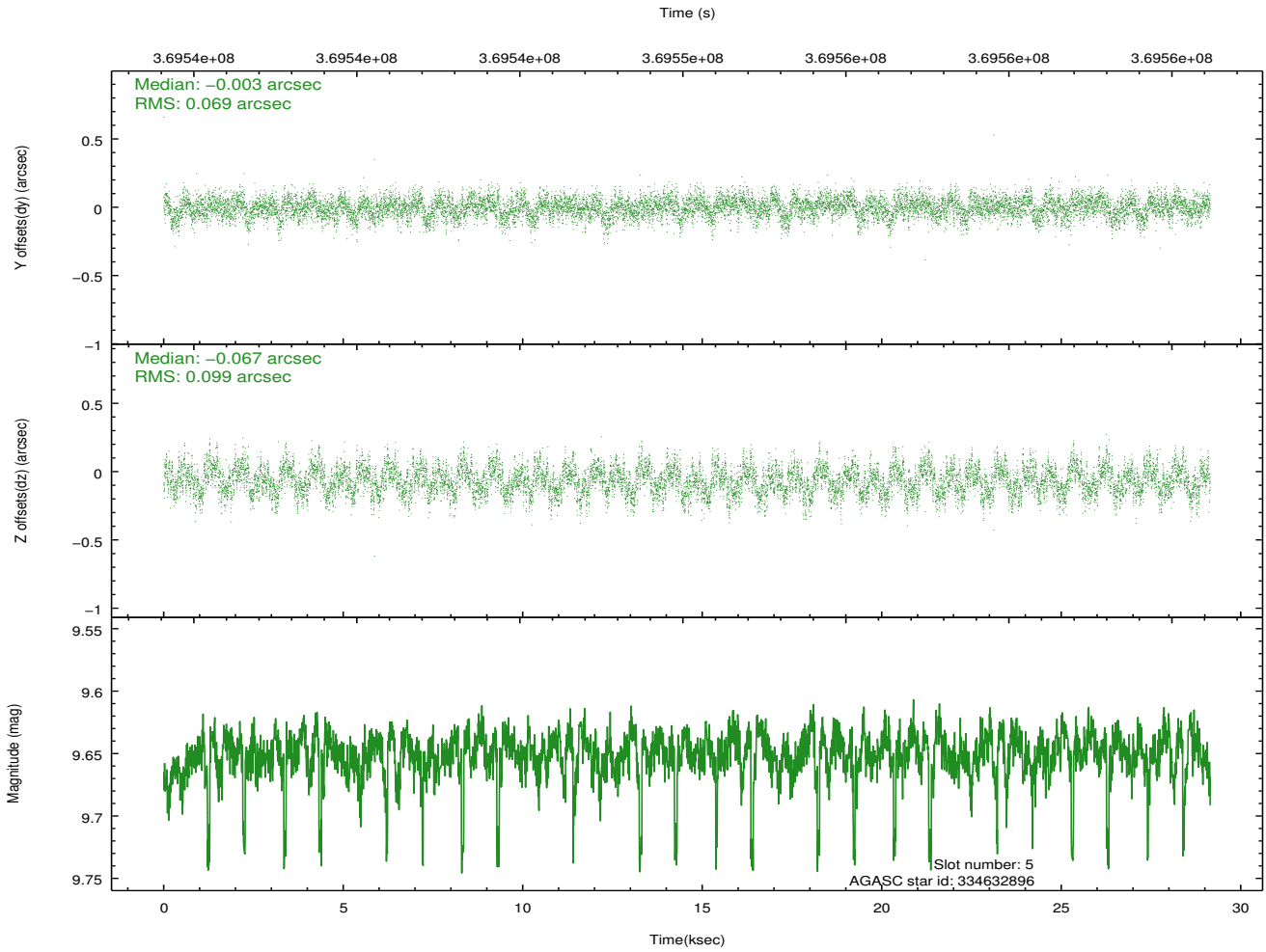
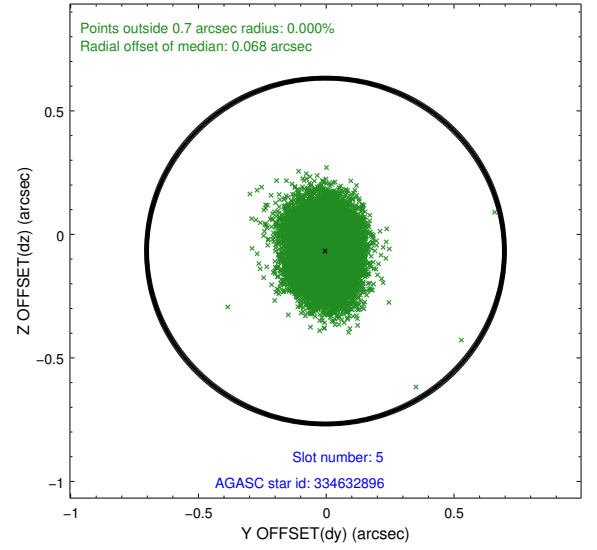
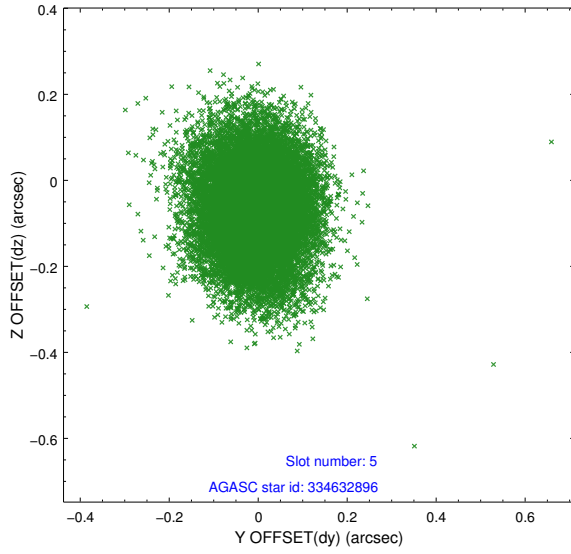
2.4.1 Slot 3



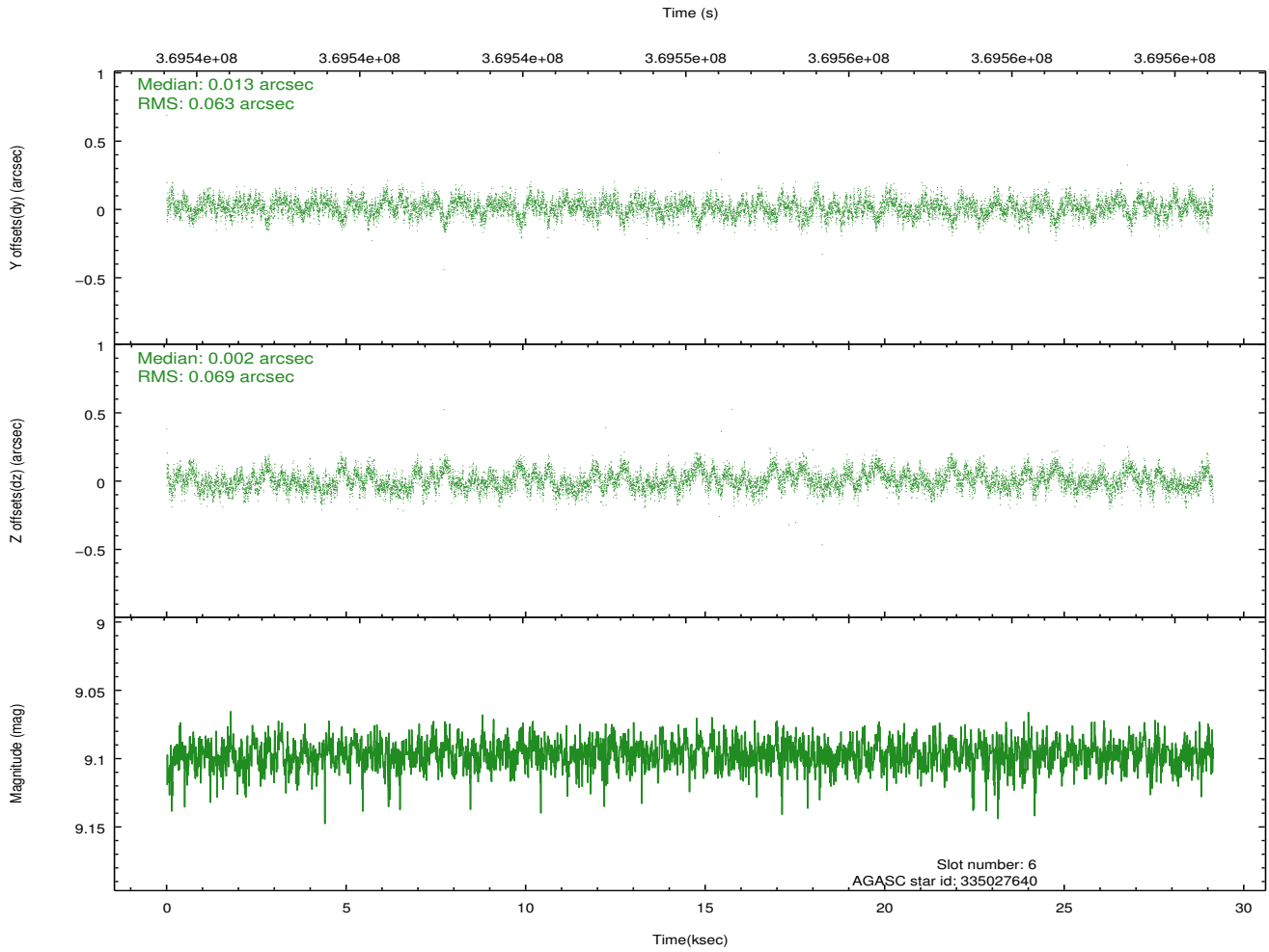
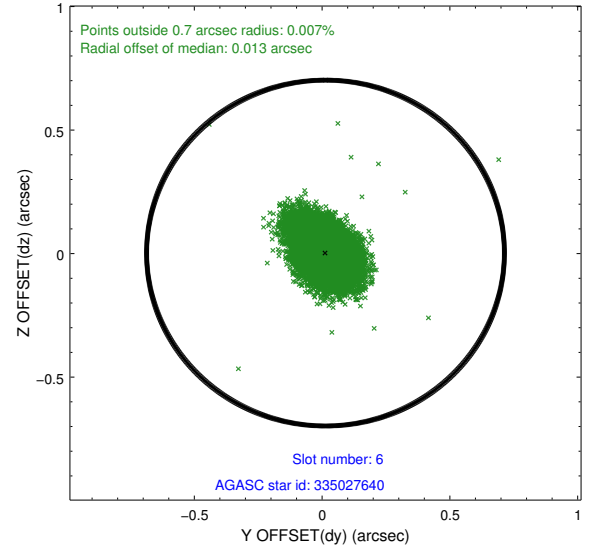
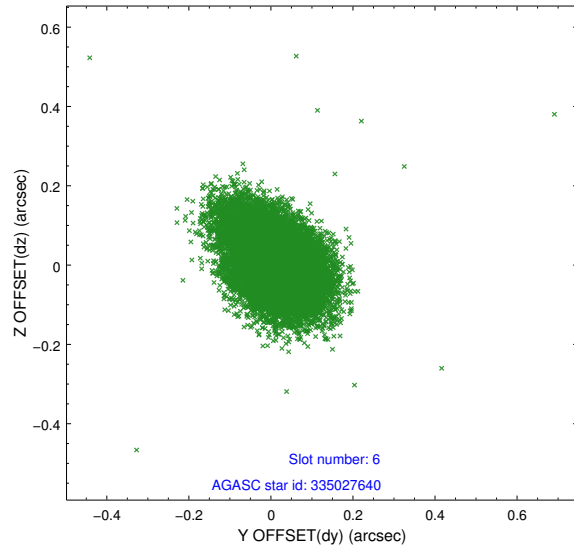
2.4.2 Slot 4



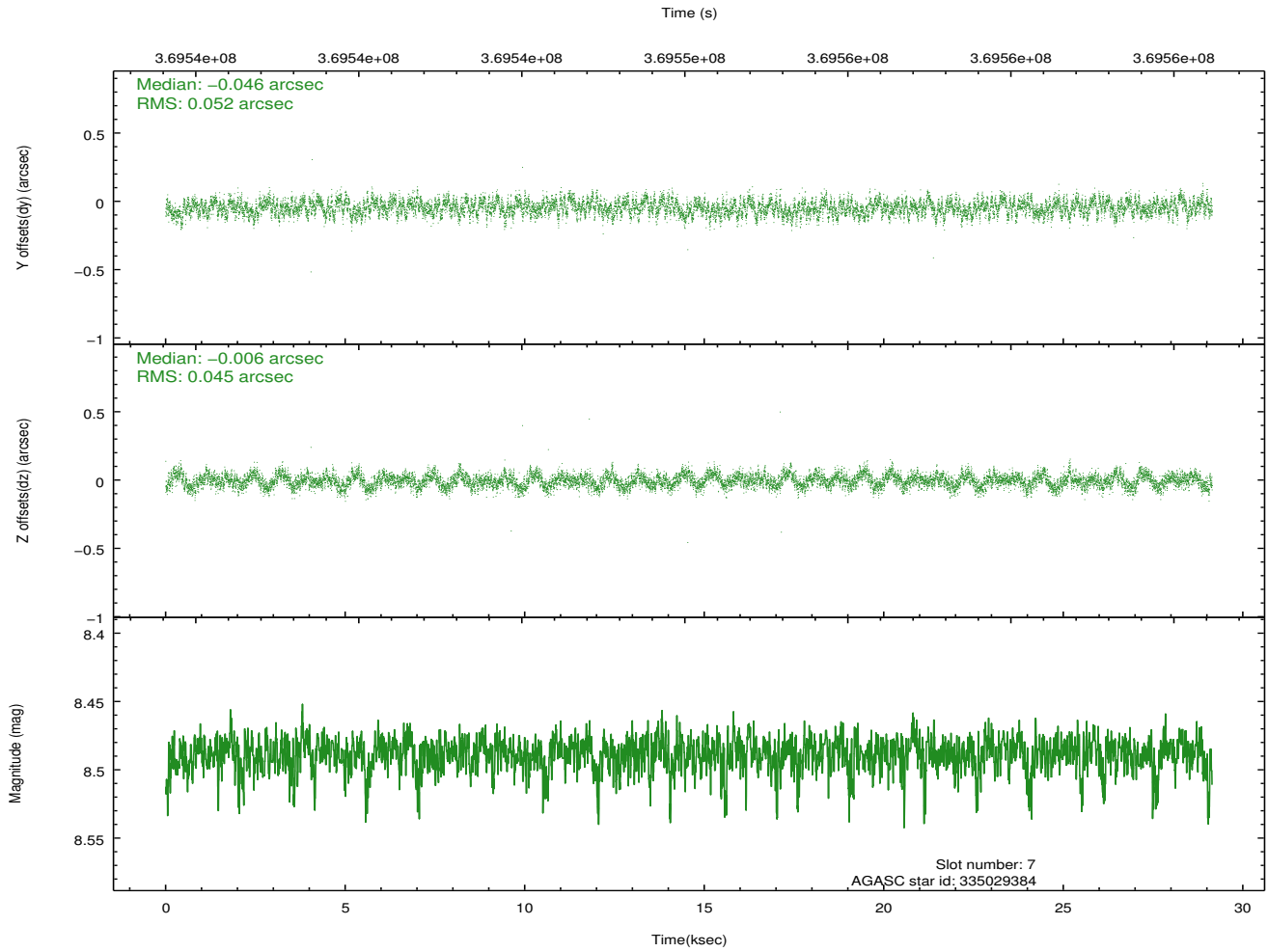
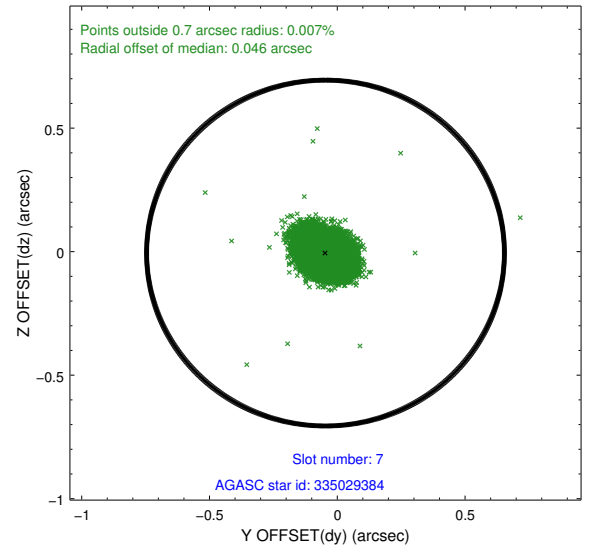
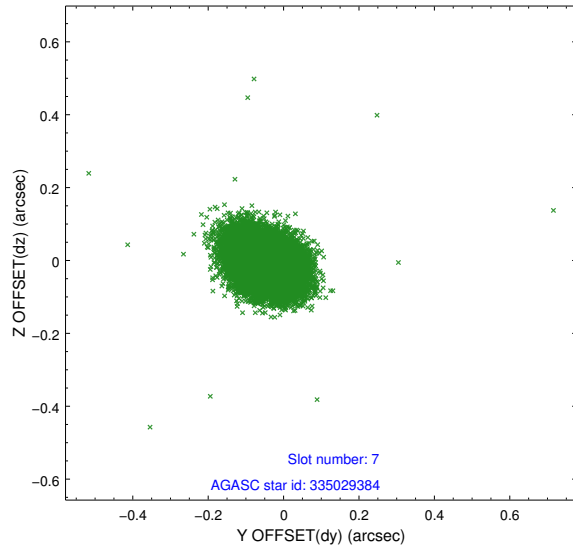
2.4.3 Slot 5



2.4.4 Slot 6

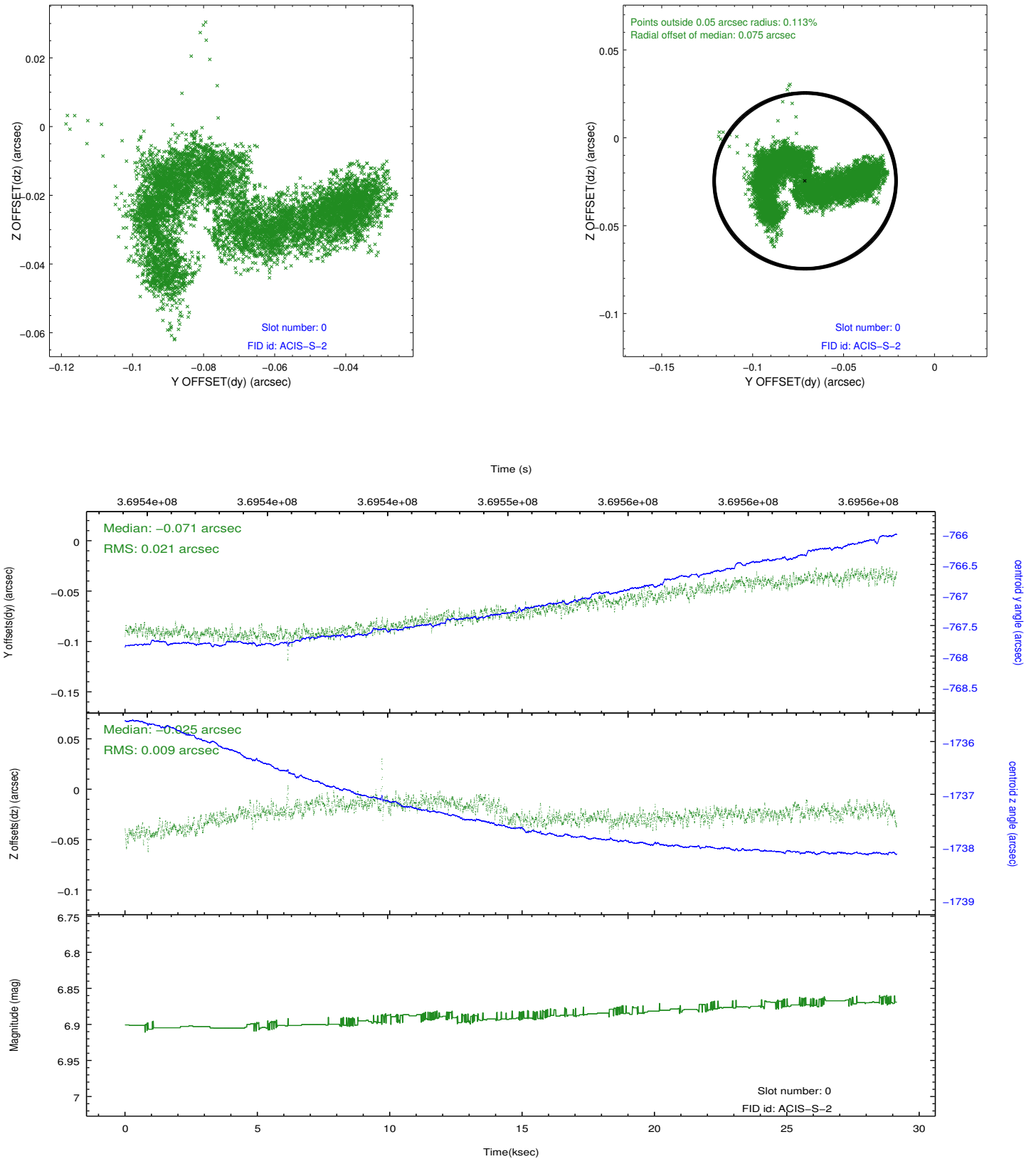


2.4.5 Slot 7

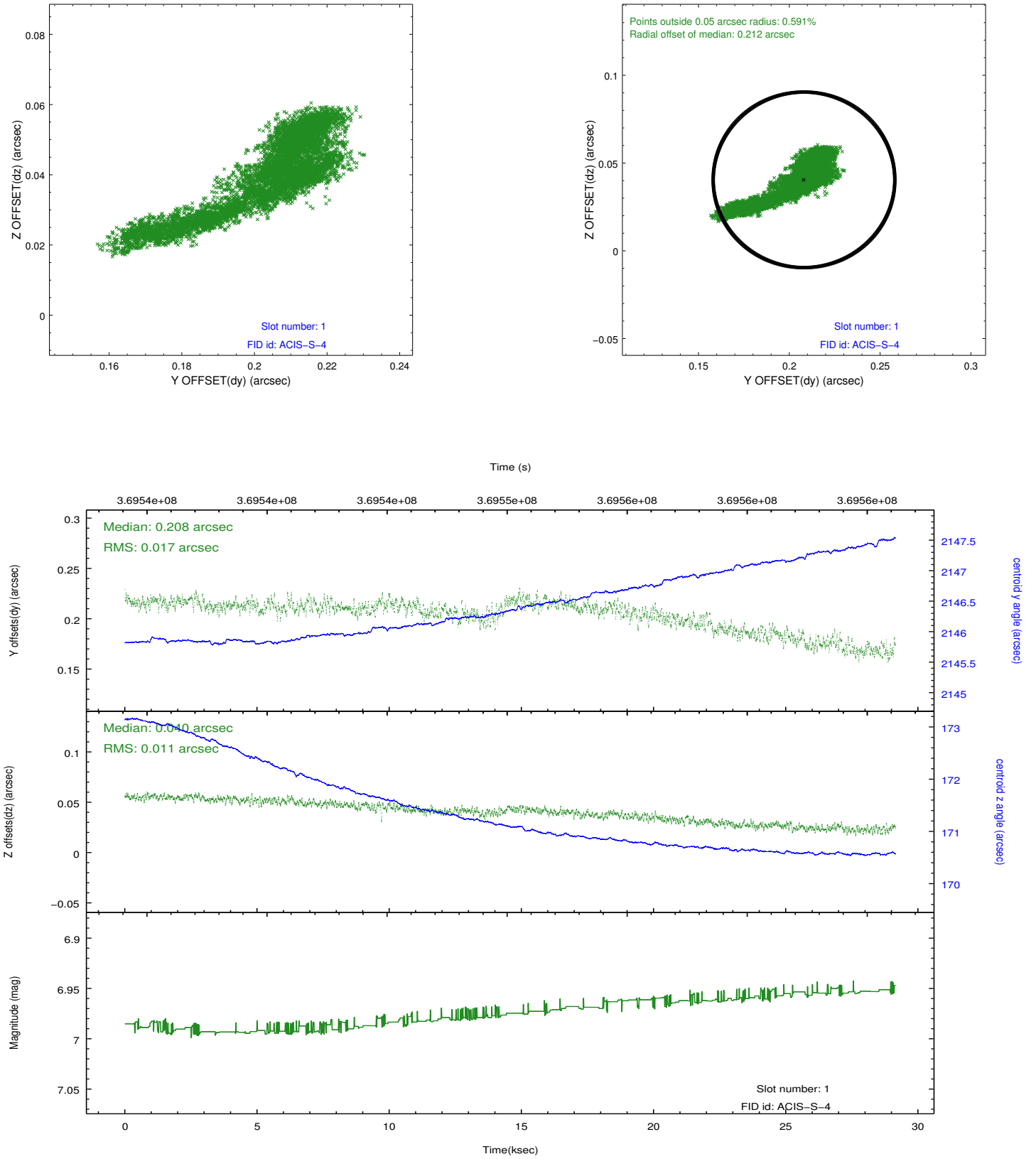


2.5 FID Slots

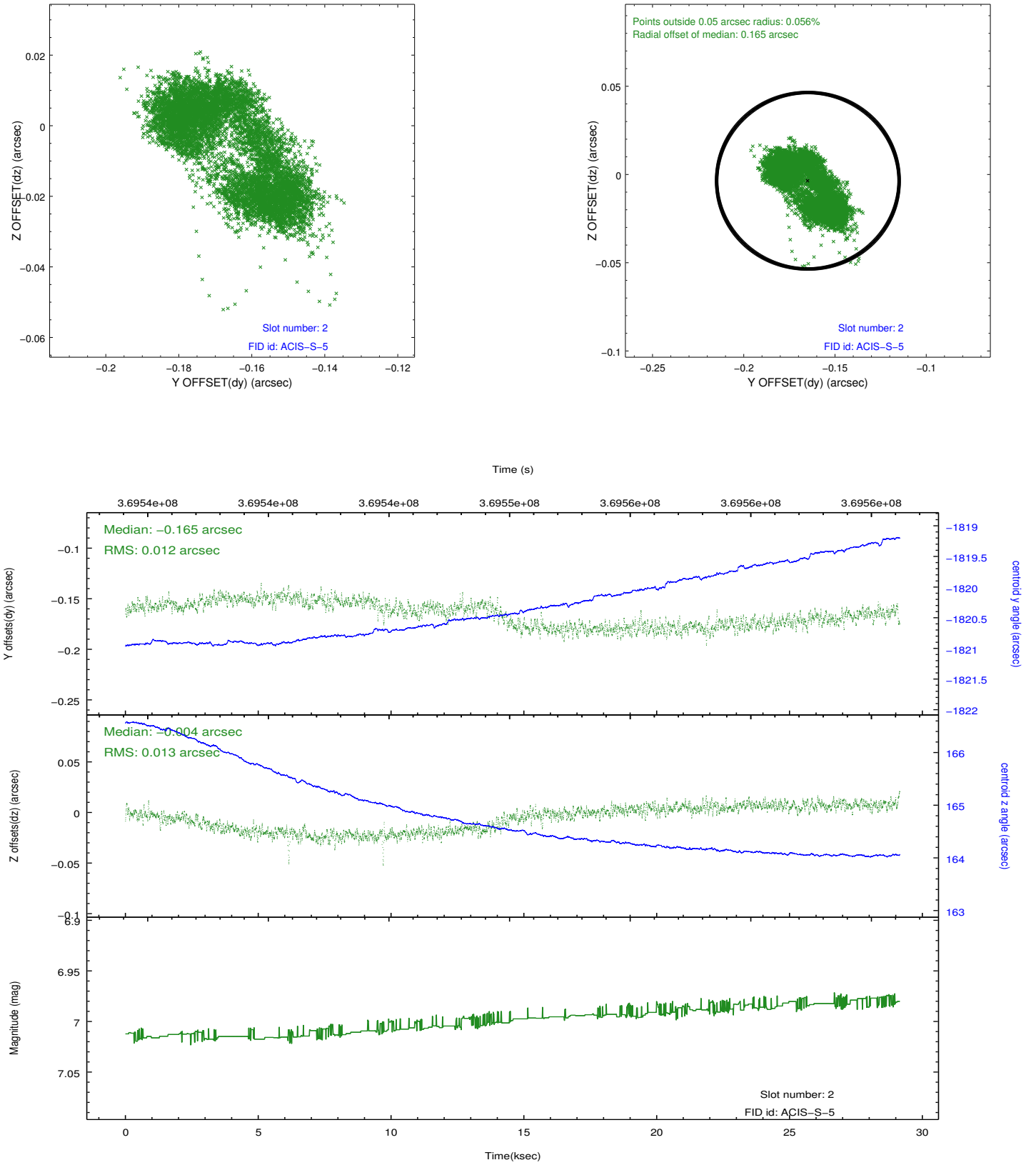
2.5.1 Slot 0



2.5.2 Slot 1



2.5.3 Slot 2



A Summary

A.1 Status

V&V Scientist	Jen Lauer
V&V Date (YYYY-MM-DD)	2012.06.18
V&V Edition	1
V&V Disposition and Status	OK
V&V Charge Time	29.140000224113

A.2 Comments