

V&V Reference Report

L2 ASCDS Version : 8.4.4

Observation 10486 - L2 Version 2
Chandra X-Ray Center

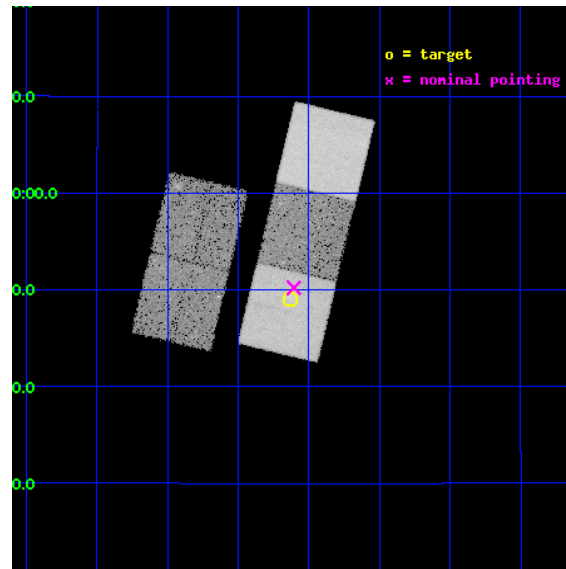
L2 Processing Date : Jun 3 2012

Contents

1	Front	2
2	OBI	3
2.1	OBI	3
2.1.1	Images	3
2.1.2	Bias	3
2.1.3	Parameters	4
2.1.4	Events	4
2.2	Compared Parameters	5
2.3	Aspect	6
2.4	Star Slots	9
2.4.1	Slot 3	9
2.4.2	Slot 4	10
2.4.3	Slot 5	11
2.4.4	Slot 6	12
2.4.5	Slot 7	13
2.5	FID Slots	14
2.5.1	Slot 0	14
2.5.2	Slot 1	15
2.5.3	Slot 2	16
A	Summary	17
A.1	Status	17
A.2	Comments	17

1 Front

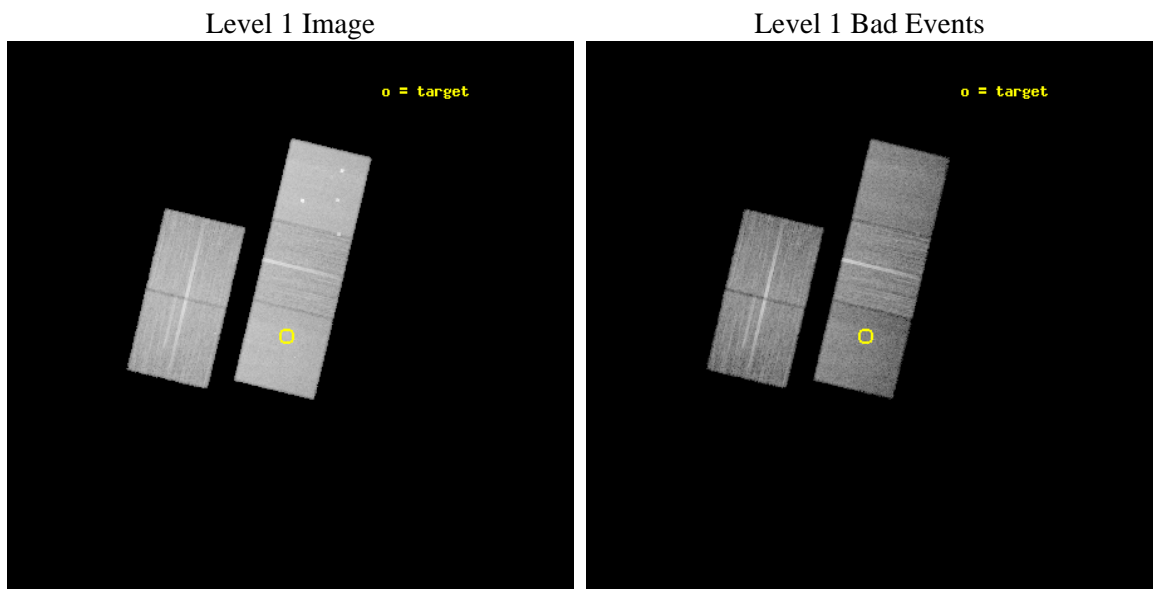
seq_num	800841	Sequence number
obs_id	10486	Observation id
title	Deciphering Cluster Observables: Tracing the Baryons in Clusters of Galaxies	Proposal title
observer	Dr. Amalia Hicks	Principal investigator
object	RCS 1447+0949	Source name
dtcycle	0	
cycle	P	events from which exps? Prim/Second/Both
ra_targ	221.78375	Observer's specified target RA [deg]
dec_targ	9.817139	Observer's specified target Dec [deg]
ra_nom	221.77638442162	Nominal RA [deg]
dec_nom	9.8367661047367	Nominal Dec [deg]
roll_nom	103.46679920549	Nominal Roll [deg]
revision	2	Processing version of data
ontime	17772.300136685	Sum of GTIs [s]
livetime	17540.091951623	Livetime [s]
ontime2	17772.300136685	Sum of GTIs [s]
ontime3	17772.300136685	Sum of GTIs [s]
ontime5	17772.300136685	Sum of GTIs [s]
ontime6	17769.159136474	Sum of GTIs [s]
ontime7	17772.300136685	Sum of GTIs [s]
l2events	220145	Number of level 2 events



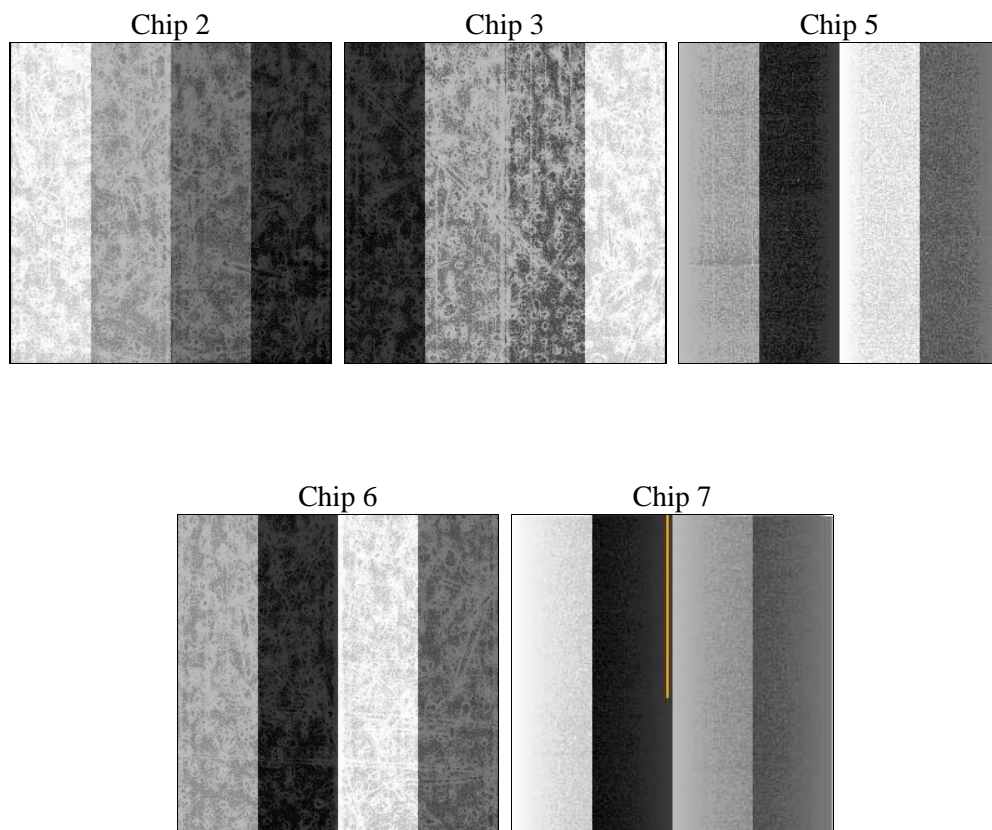
2 OBI

2.1 OBI

2.1.1 Images



2.1.2 Bias



2.1.3 Parameters

obi_num	0	Obi number	sched_exp_time	18000.000000	[s] Scheduled observation exposure time
ascdsver	8.4.4	Processing system revision	ontime	17772.300136685	Sum of GTIs [s]
caldsver	4.4.9	 	ontime2	17772.300136685	Sum of GTIs [s]
date	2012-06-03T06:21:39	Date and time of file creation	ontime3	17772.300136685	Sum of GTIs [s]
revision	2	Processing version of data	ontime5	17772.300136685	Sum of GTIs [s]
			ontime6	17769.159136474	Sum of GTIs [s]
			ontime7	17772.300136685	Sum of GTIs [s]
			l1events	847404	Number of level 1 events

2.1.4 Events

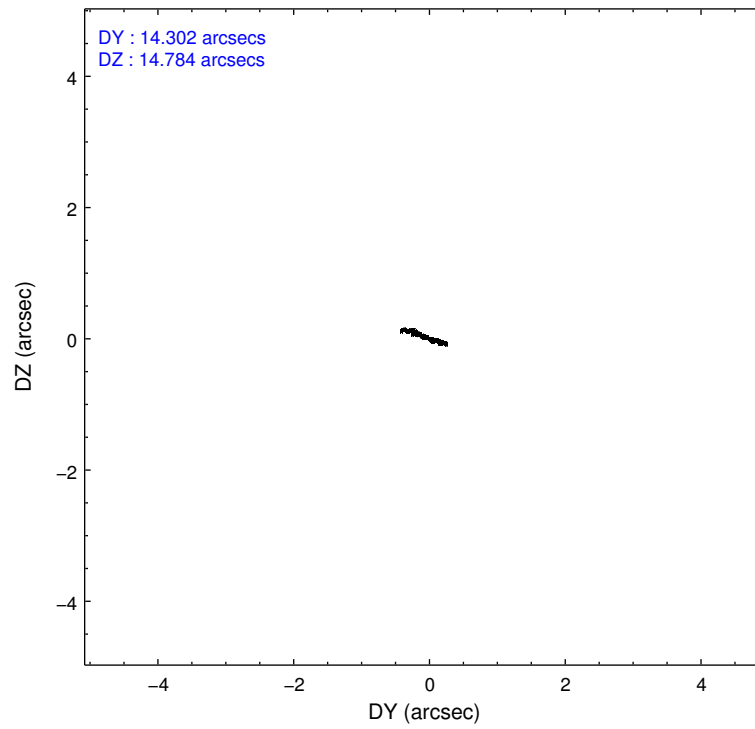
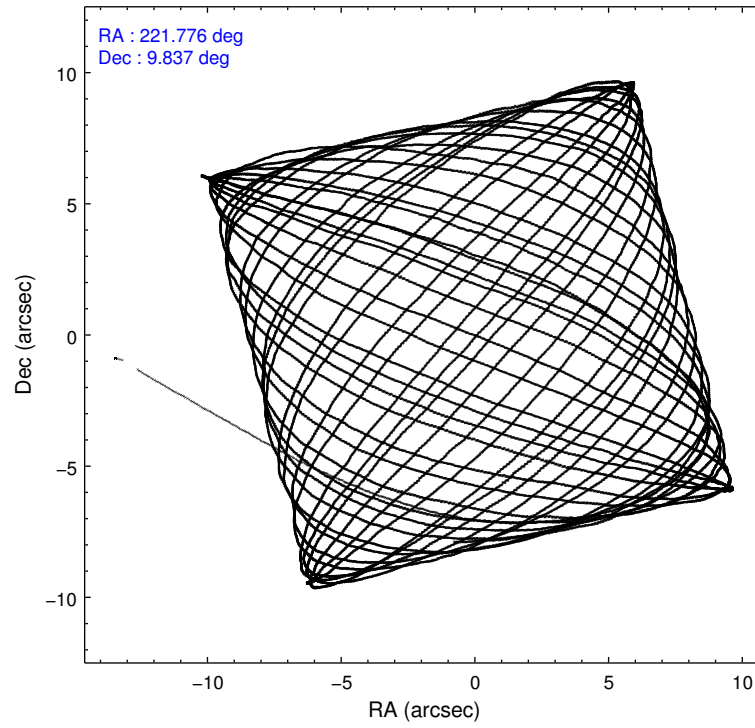
	ccd 2	ccd 3	ccd 5	ccd 6	ccd 7
level 1 events	151585	145552	218224	156572	175471
rejected events	136175	130672	108599	139909	94834
rejected %	89%	89%	49%	89%	54%

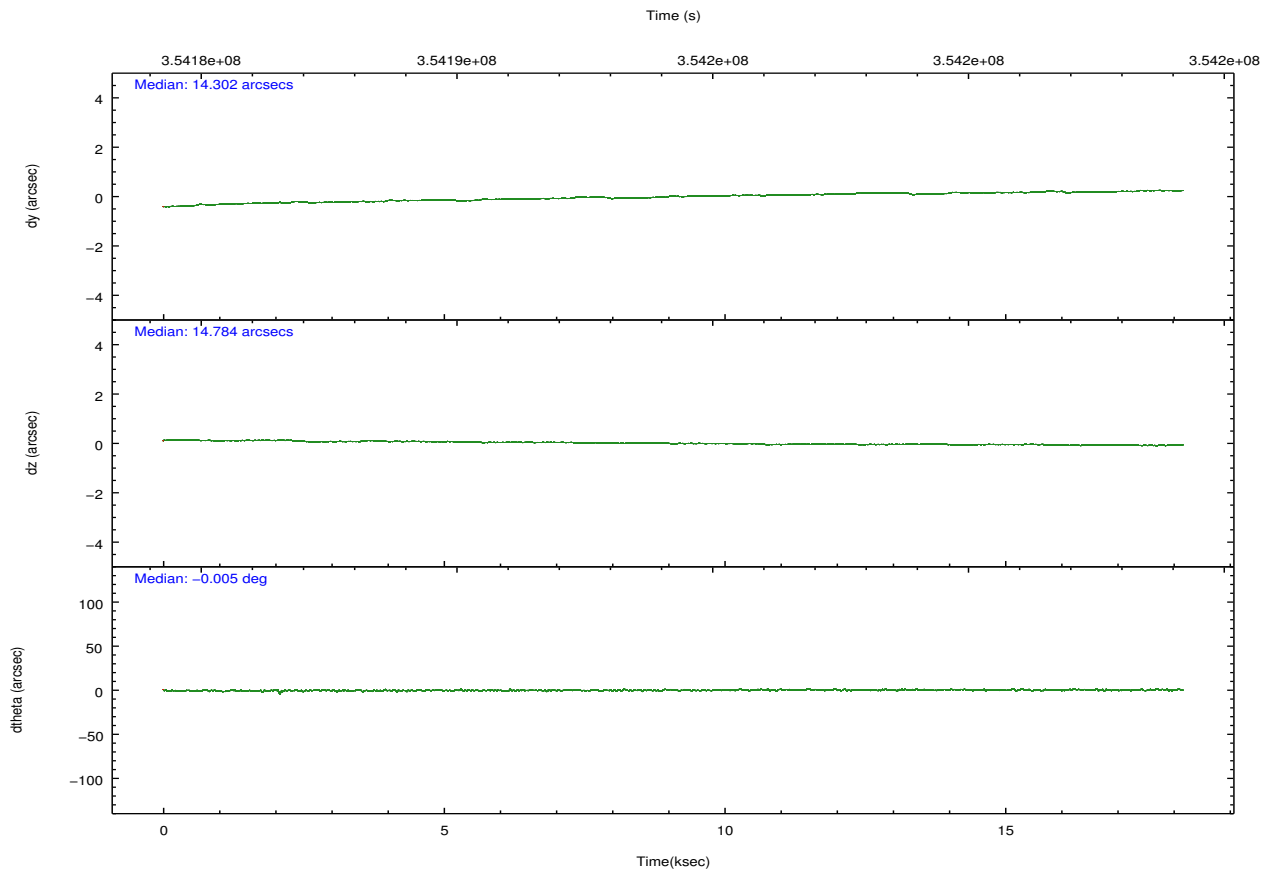
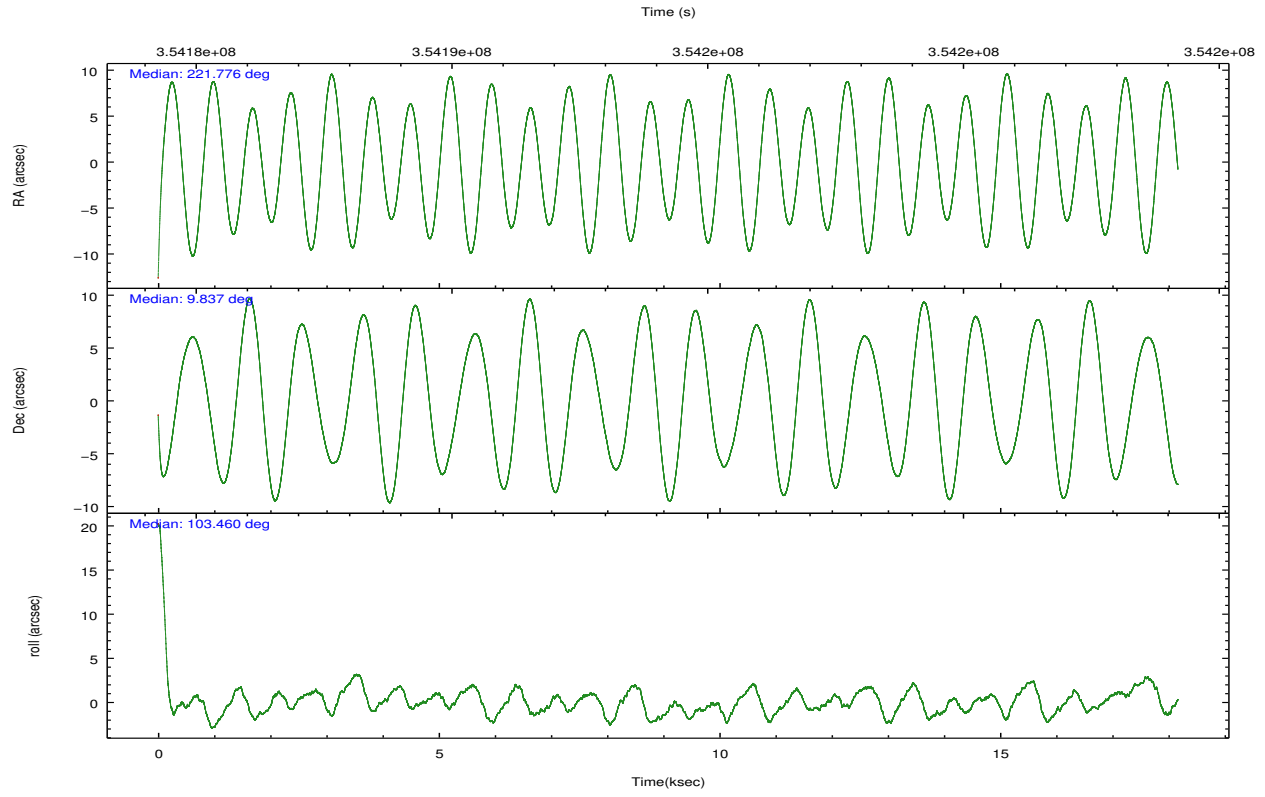
	ccd 2	ccd 3	ccd 5	ccd 6	ccd 7
grade 0 events	5787	5488	12447	6051	8160
	3%	3%	5%	3%	4%
grade 1 events	89	91	473	83	253
	0%	0%	0%	0%	0%
grade 2 events	3551	3203	32483	3699	16391
	2%	2%	14%	2%	9%
grade 3 events	1646	1634	4460	1701	7432
	1%	1%	2%	1%	4%
grade 4 events	1619	1606	4450	1718	7177
	1%	1%	2%	1%	4%
grade 5 events	5258	6122	16973	6228	18261
	3%	4%	7%	3%	10%
grade 6 events	2810	2959	55819	3498	41503
	1%	2%	25%	2%	23%
grade 7 events	130825	124449	91119	133594	76294
	86%	85%	41%	85%	43%

2.2 Compared Parameters

Parameter	Planned	Actual	Parameter	Planned	Actual
Instrument	ACIS	ACIS	Obspar format version number	7	7
Detector	ACIS-23567	ACIS-23567	Obspar file type	PREDICTED	ACTUAL
Grating	NONE	NONE	Obspar update status	NONE	UPDATED
Data mode	VFAINT	VFAINT	CCD I0 on	N	N
Observation mode	POINTING	POINTING	CCD I1 on	N	N
[deg] Pointing RA	221.795734	221.7763844216157	CCD I2 on	O1	Y
[deg] Pointing Dec	9.817198	9.836766104736709	CCD I3 on	O2	Y
[deg] Pointing Roll	103.306866	103.4667992054891	CCD S0 on	N	N
[mm] SIM focus pos	-0.684267	-0.6828225247311905	CCD S1 on	O4	Y
[mm] SIM defocus	0	0.001444936568705701	CCD S2 on	O3	Y
[mm] SIM translation stage pos	-190.132523	-190.1400660498719	CCD S3 on	Y	Y
[mm] SIM translation stage offset	0	0.00754346686406393	CCD S4 on	N	N
[s] Observation start time (MET)	354185309.184000	354184249.52115	CCD S5 on	N	N
Observation start date	2009-03-23T08:47:23	2009-03-23T08:30:49	Number of optional ACIS chips dropped	0	0
[s] Observation end time (MET)	354203309.184000	354204707.49716	On-chip summing requested	N	N
Observation end date	2009-03-23T13:47:23	2009-03-23T14:11:47	Subarray requested	NONE	NONE
Read mode	TIMED	TIMED	Alternating exposures requested	N	N
			[s] Primary exposure time	0.000000	3.1

2.3 Aspect



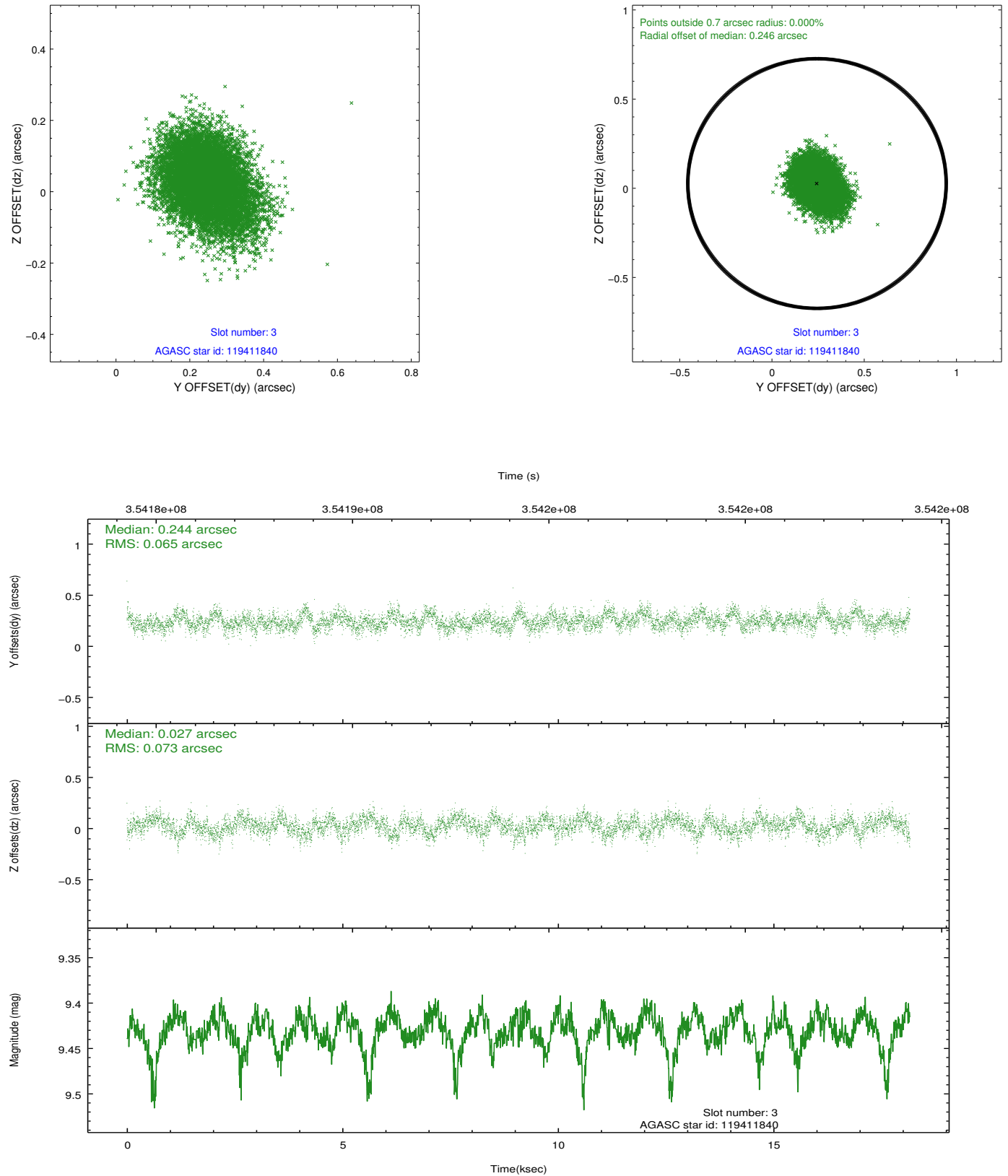


Slot Statistics

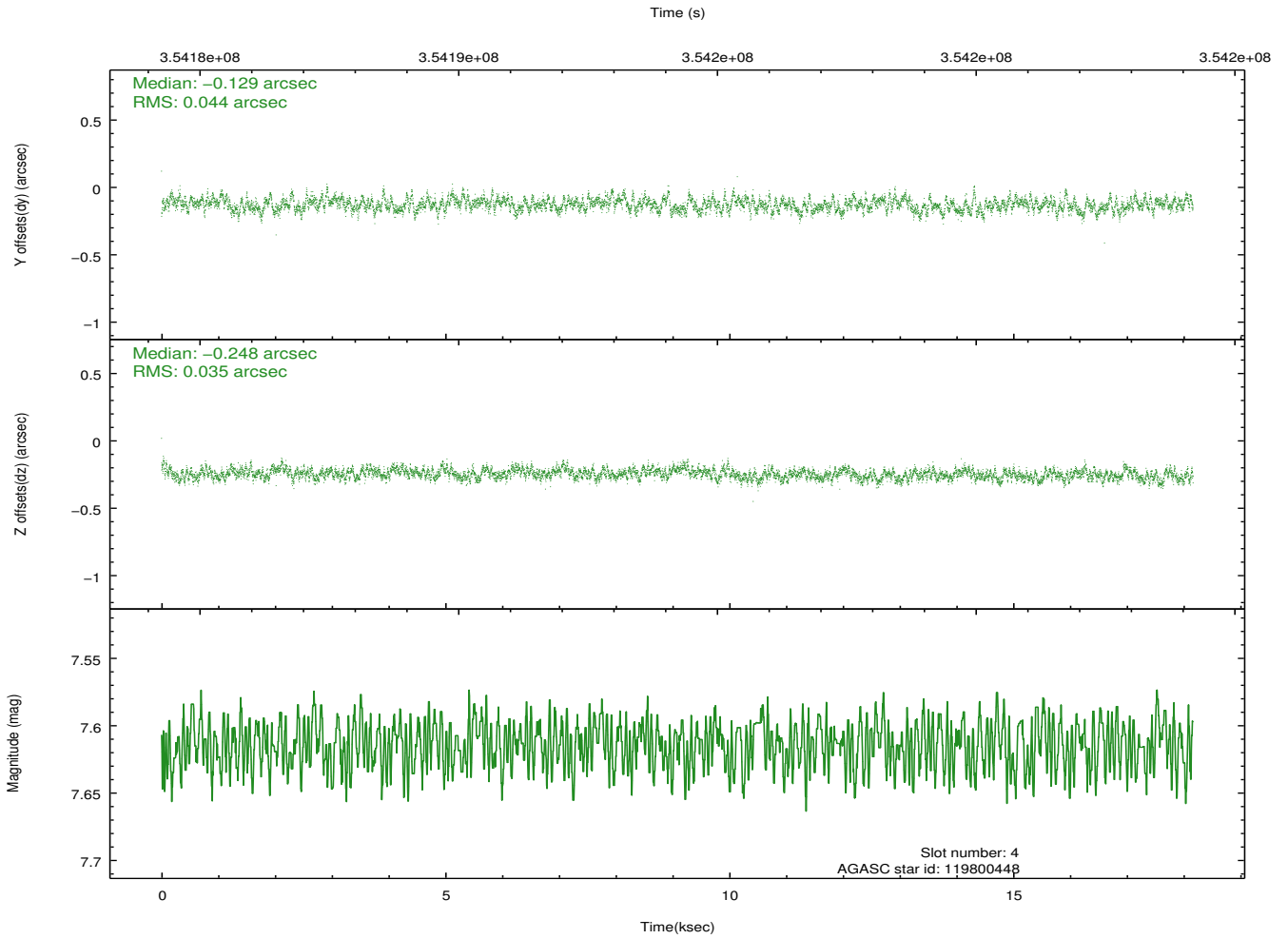
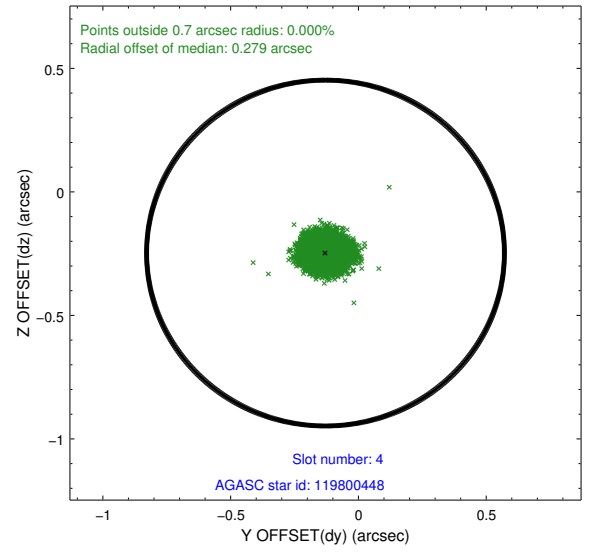
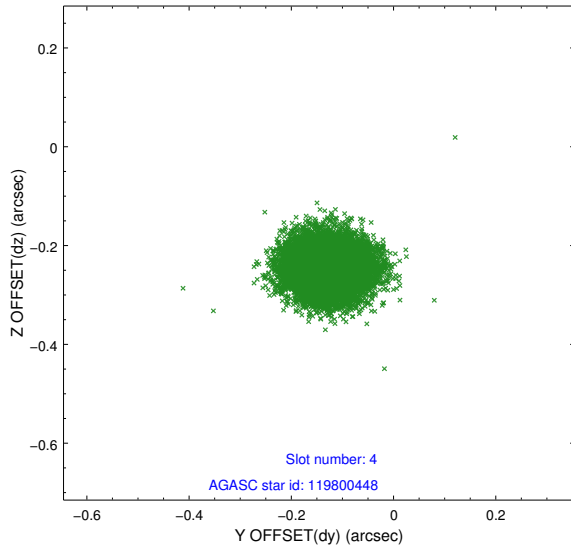
slot	status	id	mag	n_pts	med_dy	med_dz	dr1	dr2	ra	dec	mean_y	mean_z
0	FID	ACIS-S-1	6.97	4431	-0.033	-0.029	0.013	0.021	0.000000	0.000000	928.75	-1731.84
1	FID	ACIS-S-4	6.98	4431	0.082	0.020	0.007	0.012	0.000000	0.000000	2146.41	172.13
2	FID	ACIS-S-6	7.11	4430	-0.073	0.019	0.012	0.019	0.000000	0.000000	394.96	809.75
3	GUIDE	119411840	9.43	8851	0.244	0.027	0.104	0.171	222.041386	9.490009	-1345.75	-577.65
4	GUIDE	119800448	7.61	8861	-0.129	-0.248	0.061	0.095	221.486608	10.052010	1075.37	872.52
5	GUIDE	119806736	8.05	8861	-0.075	0.096	0.077	0.120	221.842781	10.305881	1672.88	-565.42
6	GUIDE	120721744	8.80	8727	0.026	-0.013	0.090	0.153	222.285298	10.540541	2137.53	-2285.61
7	GUIDE	120728904	6.42	8861	-0.071	0.141	0.063	0.111	222.358978	10.044159	337.41	-2130.74

2.4 Star Slots

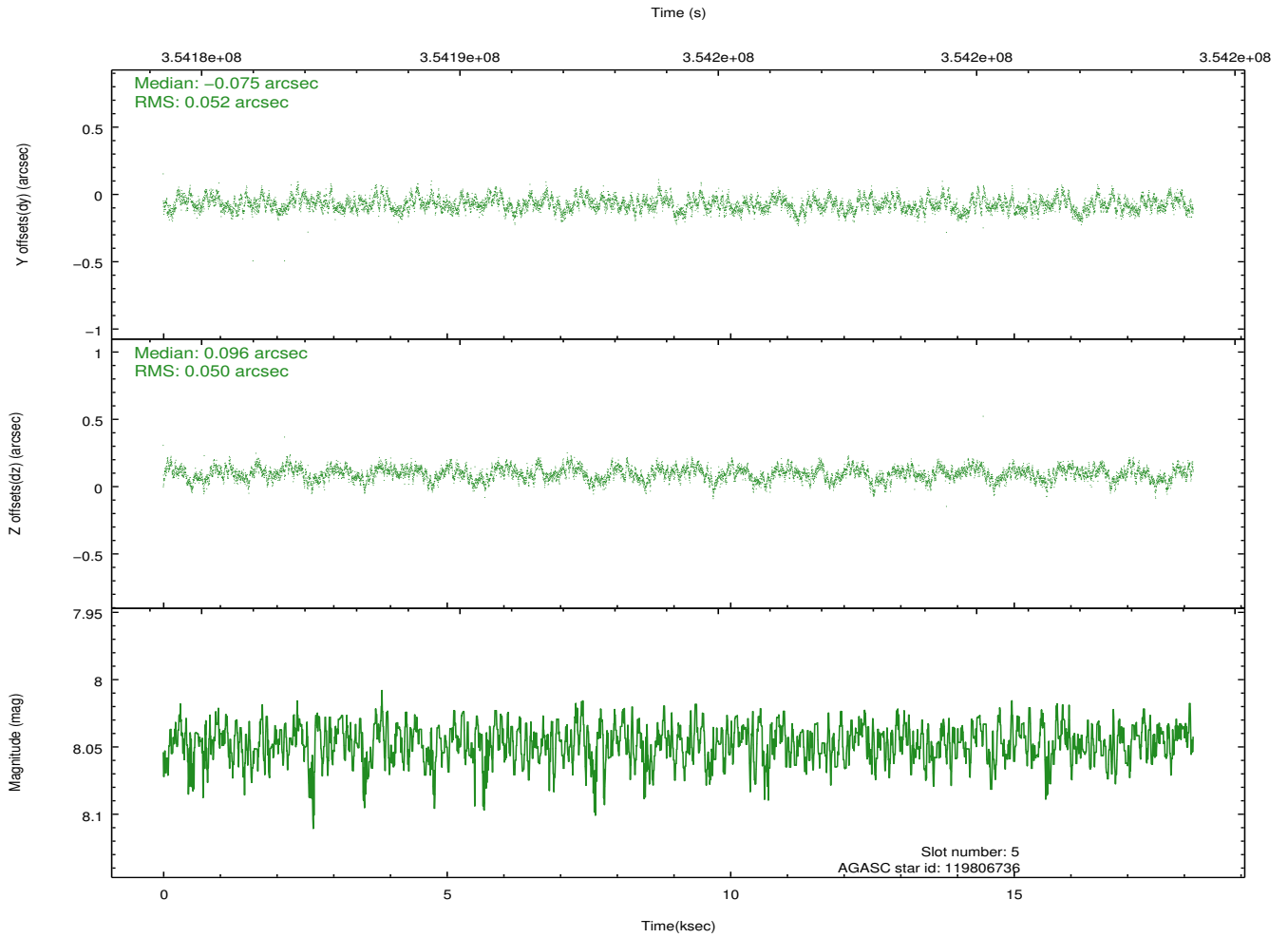
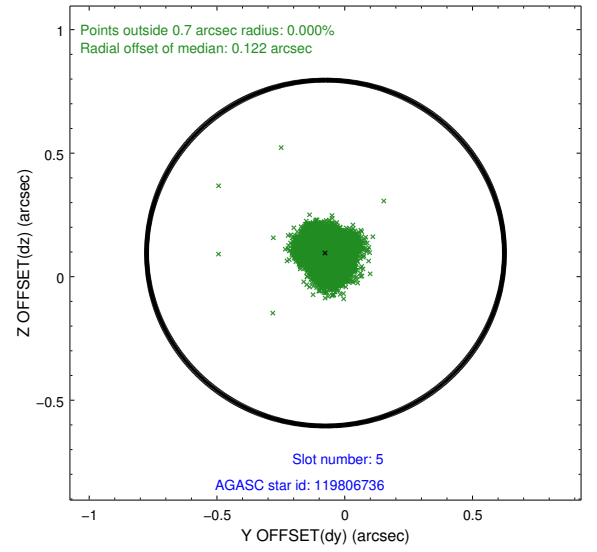
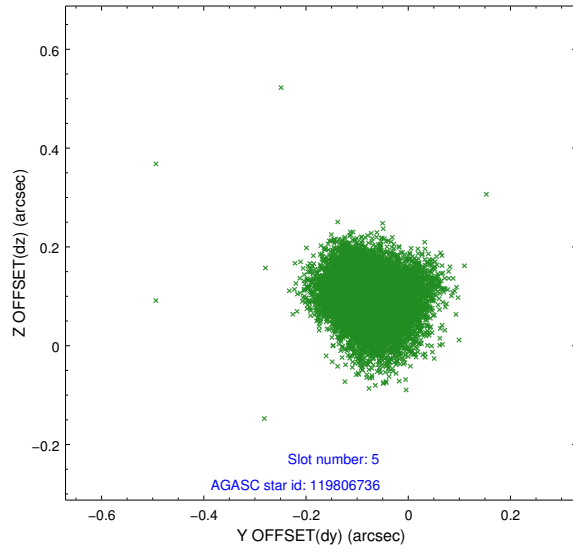
2.4.1 Slot 3



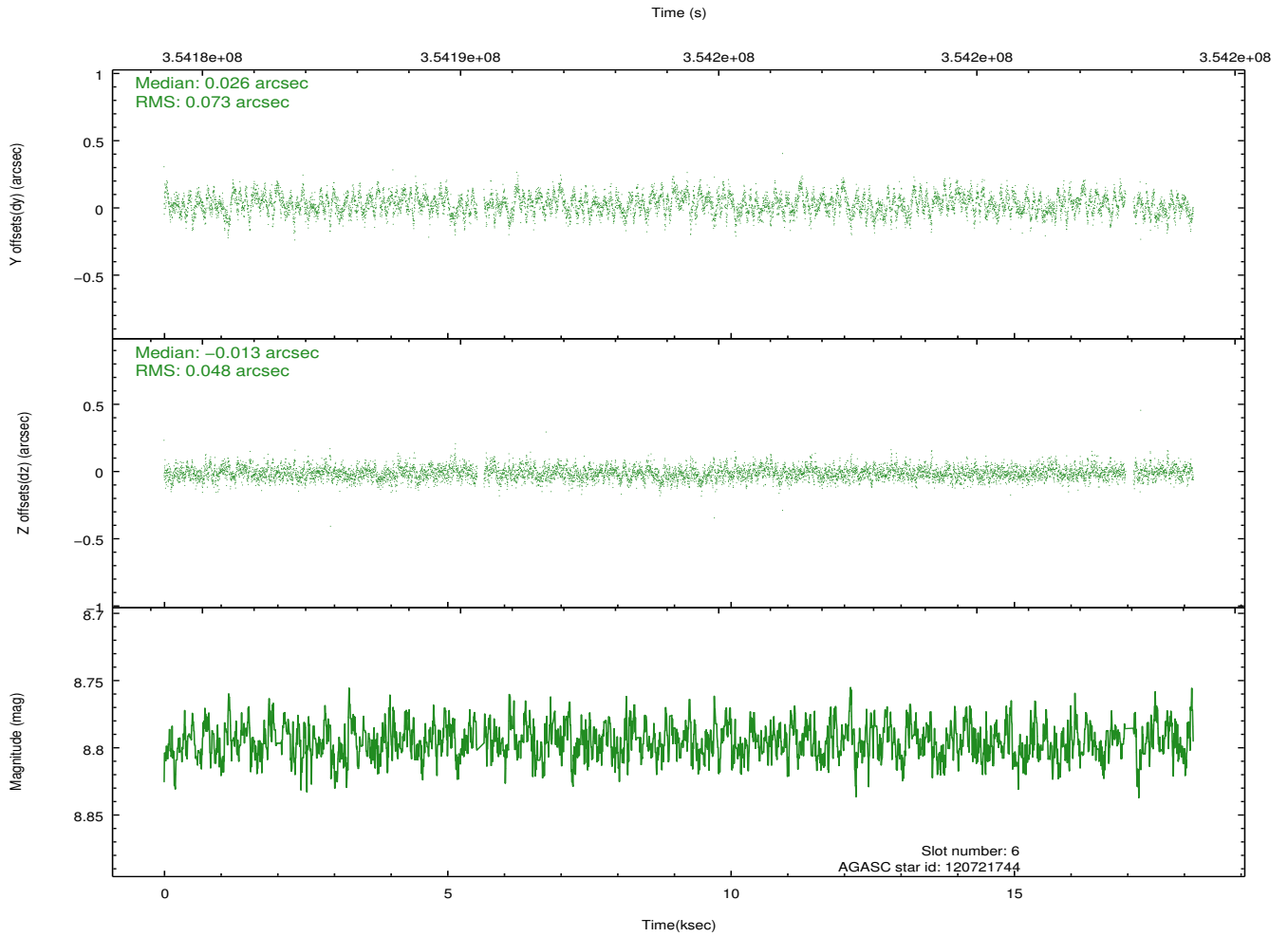
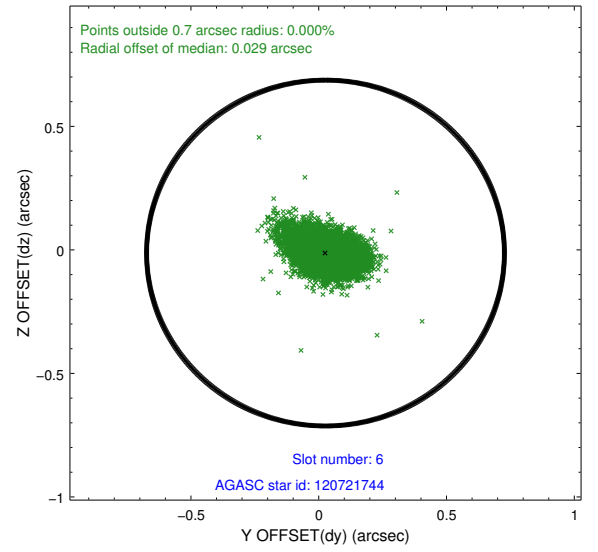
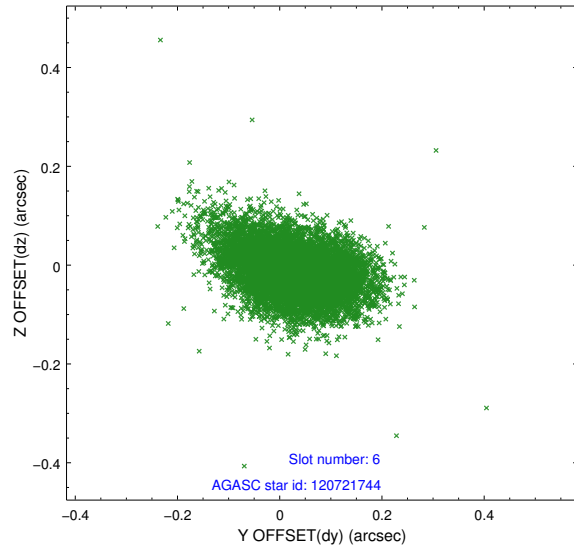
2.4.2 Slot 4



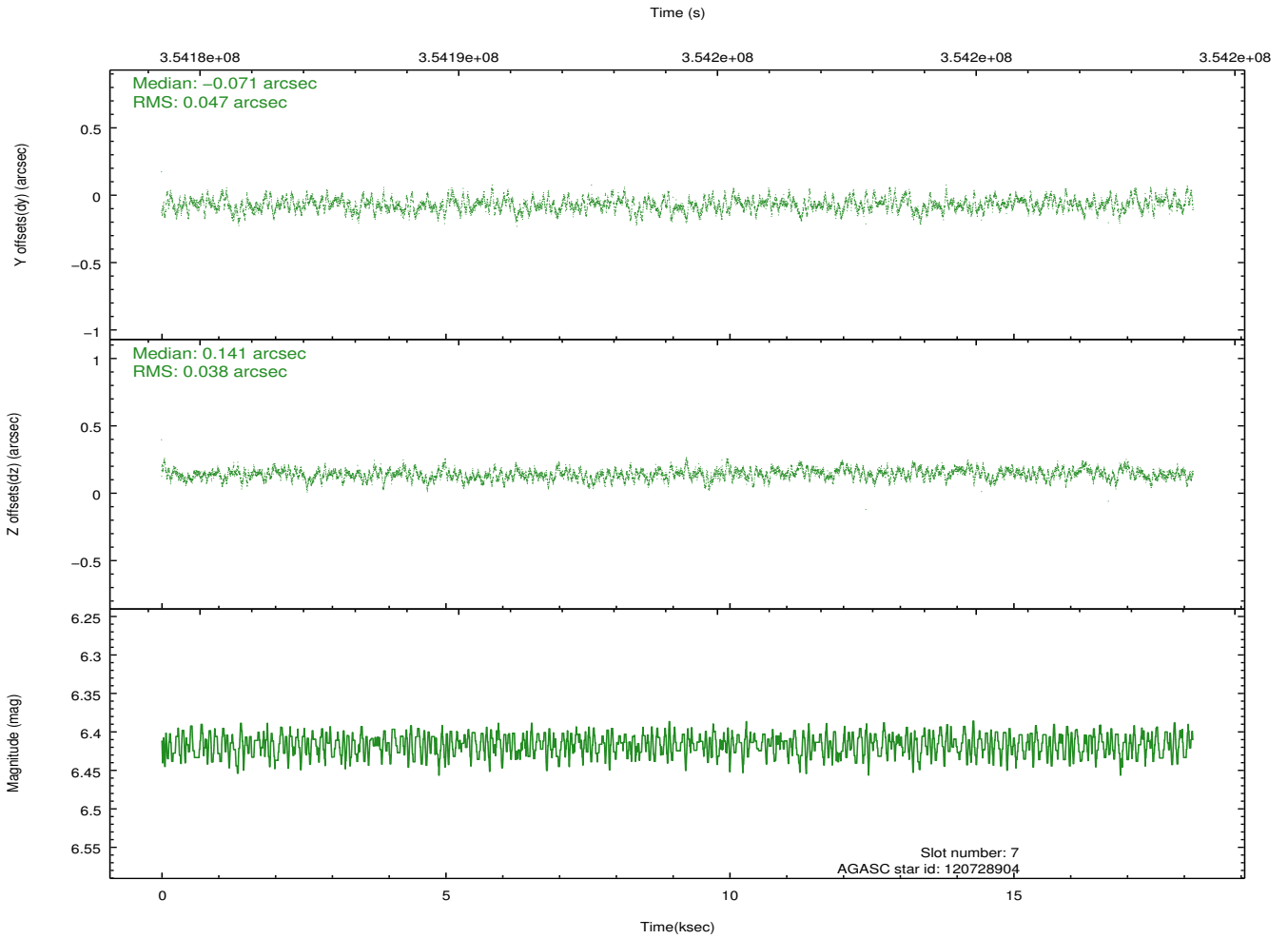
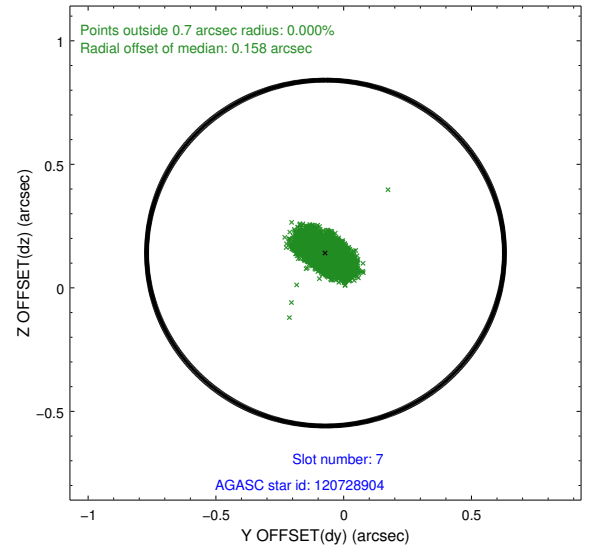
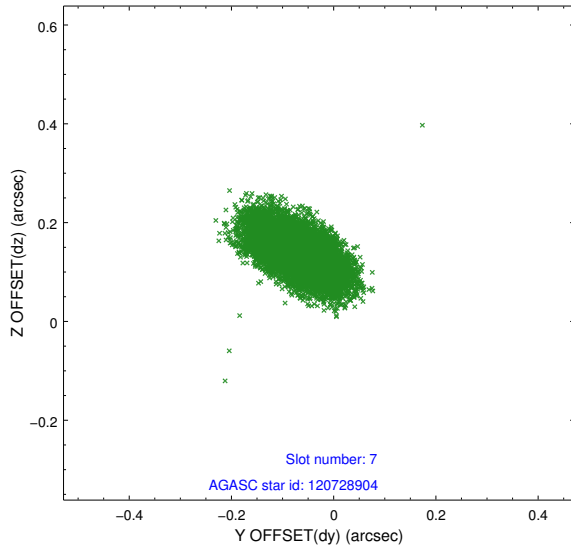
2.4.3 Slot 5



2.4.4 Slot 6

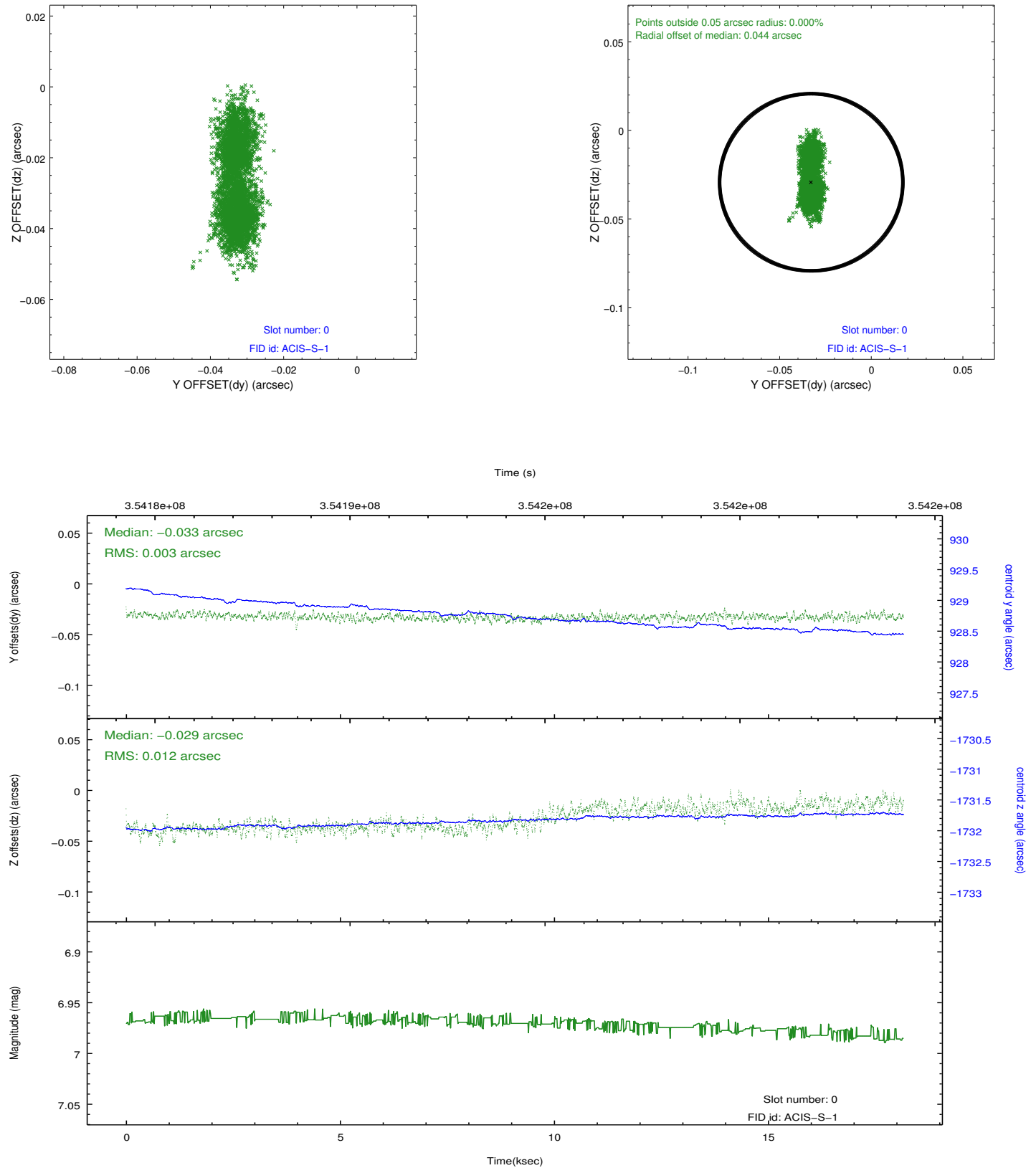


2.4.5 Slot 7

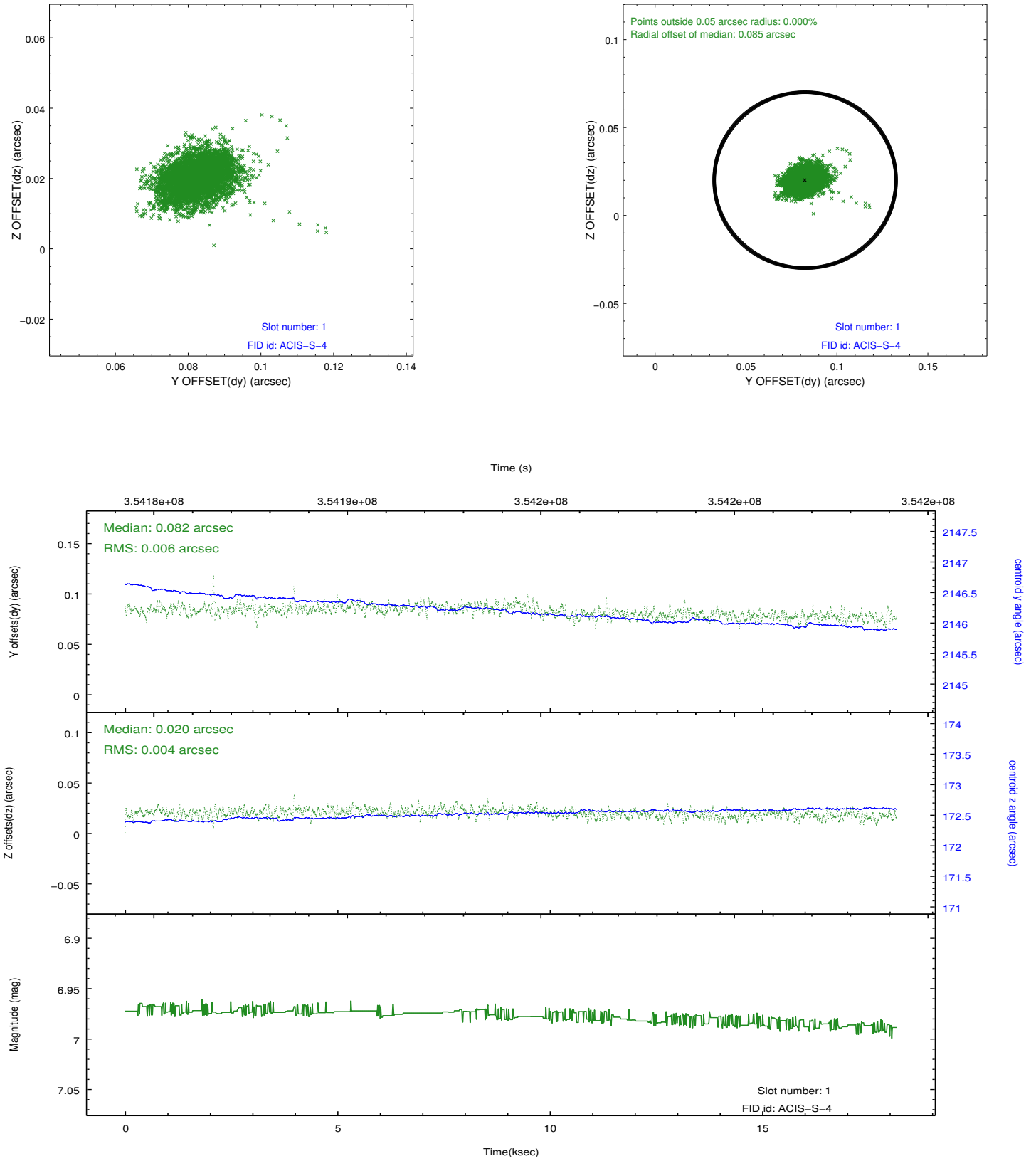


2.5 FID Slots

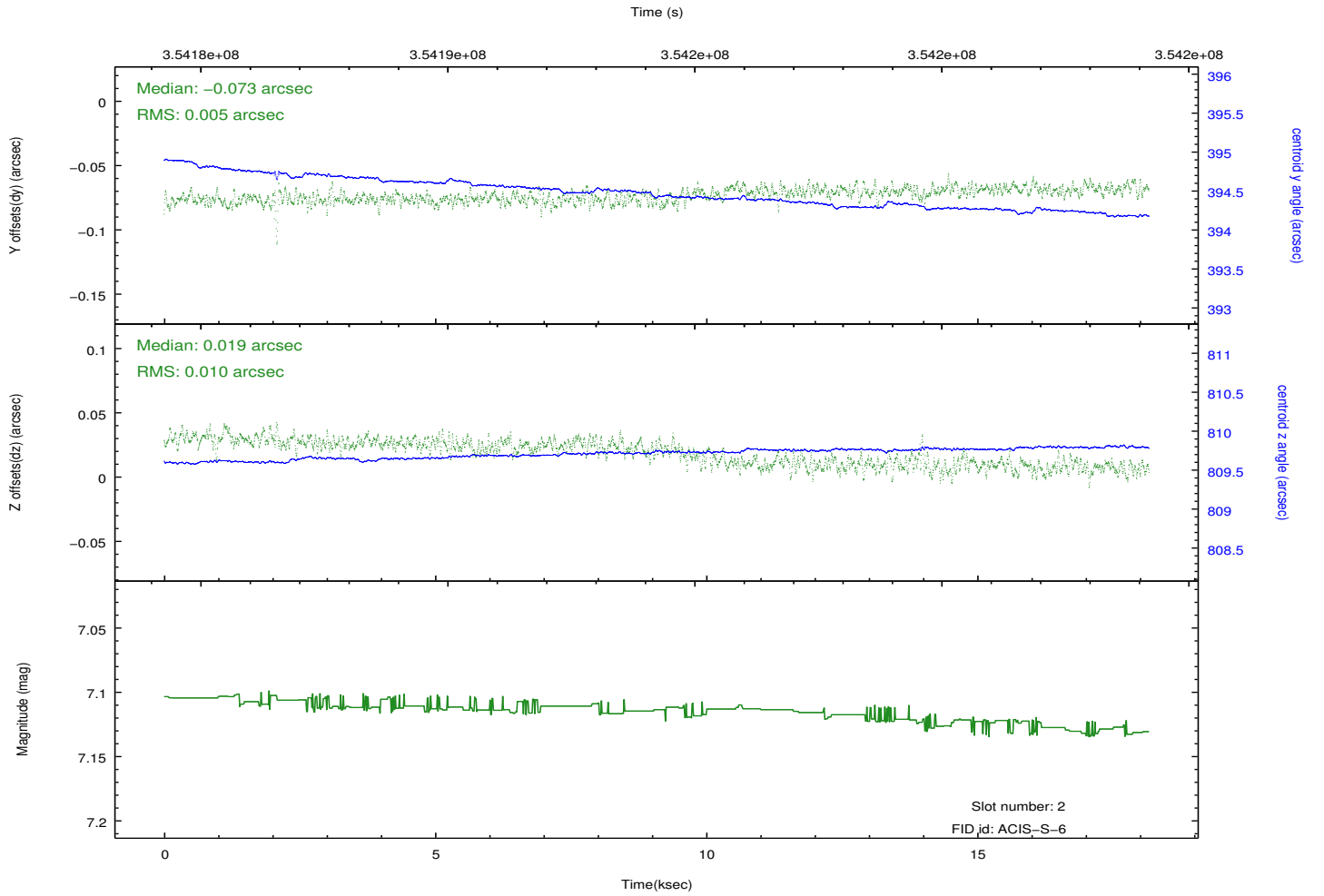
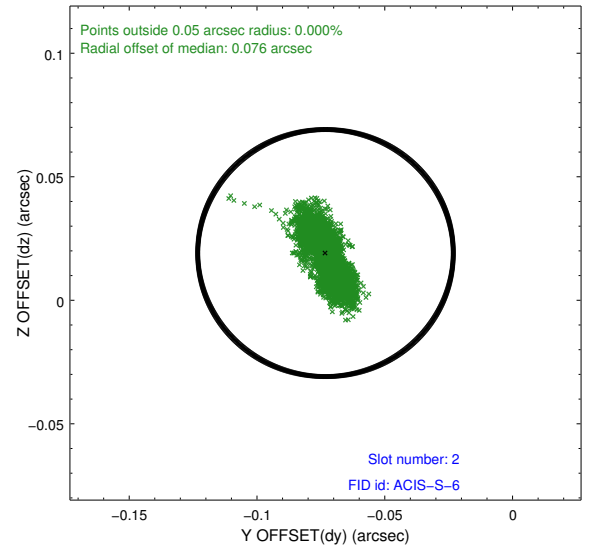
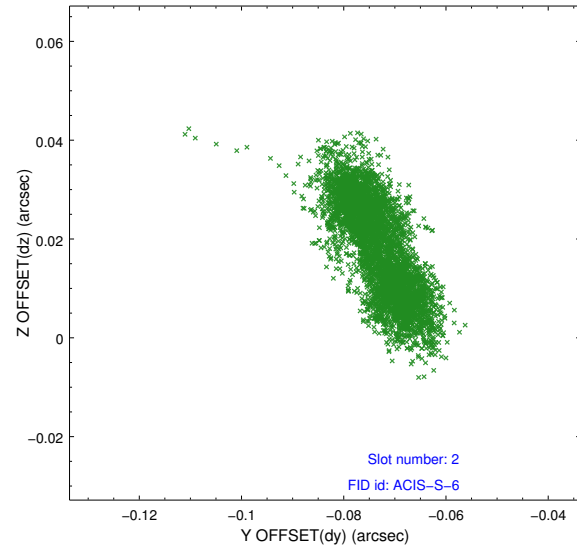
2.5.1 Slot 0



2.5.2 Slot 1



2.5.3 Slot 2



A Summary

A.1 Status

V&V Scientist	Jen Lauer
V&V Date (YYYY-MM-DD)	2012.06.07
V&V Edition	1
V&V Disposition and Status	OK
V&V Charge Time	17.7723001

A.2 Comments