

V&V Reference Report

L2 ASCDS Version : 8.4.3

Observation 6575 - L2 Version 2
Chandra X-Ray Center

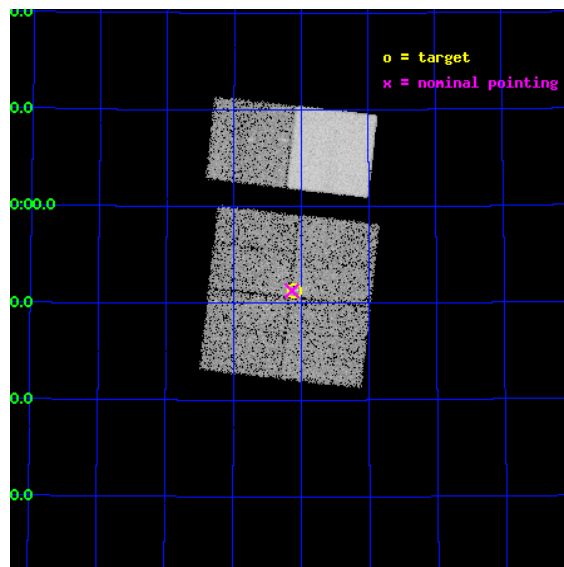
L2 Processing Date : Mar 30 2012

Contents

1	Front	2
2	OBI	3
2.1	OBI	3
2.1.1	Images	3
2.1.2	Bias	3
2.1.3	Parameters	4
2.1.4	Events	4
2.2	Compared Parameters	5
2.3	Aspect	6
2.4	Star Slots	9
2.4.1	Slot 3	9
2.4.2	Slot 4	10
2.4.3	Slot 5	11
2.4.4	Slot 6	12
2.4.5	Slot 7	13
2.5	FID Slots	14
2.5.1	Slot 0	14
2.5.2	Slot 1	15
2.5.3	Slot 2	16
A	Summary	17
A.1	Status	17
A.2	Comments	17

1 Front

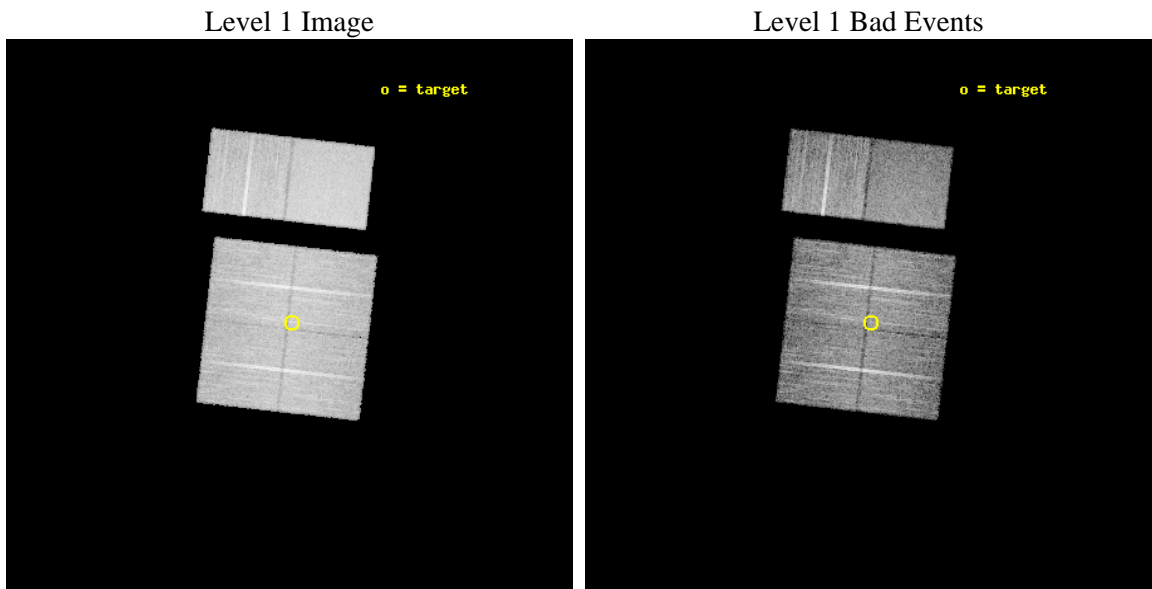
seq_num	400480	Sequence number
obs_id	6575	Observation id
title	X-ray Emission from Candidate Massive Star Clusters	Proposal title
observer	Professor Gordon Garmire	Principal investigator
object	Sh2-187	Source name
dtcycle	0	
cycle	P	events from which exps? Prim/Second/Both
ra_targ	20.775	Observer's specified target RA [deg]
dec_targ	61.856389	Observer's specified target Dec [deg]
ra_nom	20.784456252841	Nominal RA [deg]
dec_nom	61.855103966392	Nominal Dec [deg]
roll_nom	6.4798122973196	Nominal Roll [deg]
revision	2	Processing version of data
ontime	10169.599962115	Sum of GTIs [s]
livetime	10040.826363997	Livetime [s]
ontime0	10169.599962115	Sum of GTIs [s]
ontime1	10169.599962115	Sum of GTIs [s]
ontime2	10169.599962115	Sum of GTIs [s]
ontime3	10169.599962115	Sum of GTIs [s]
ontime6	10169.599962115	Sum of GTIs [s]
ontime7	10169.599962115	Sum of GTIs [s]
l2events	94859	Number of level 2 events



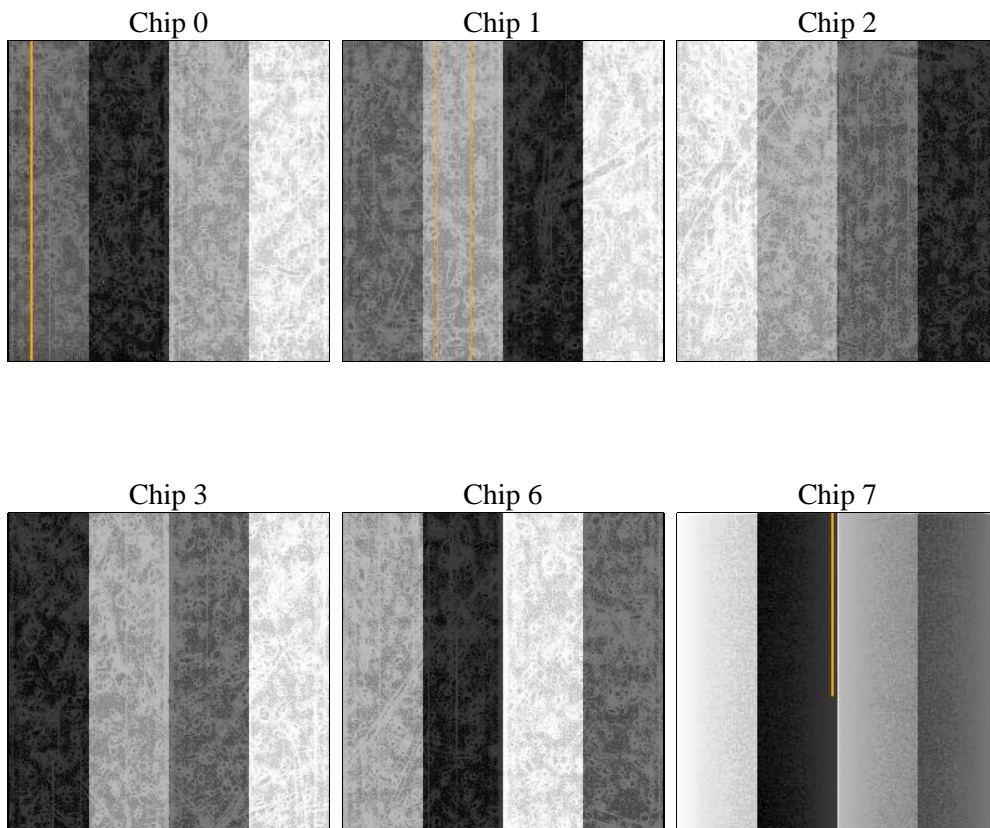
2 OBI

2.1 OBI

2.1.1 Images



2.1.2 Bias



2.1.3 Parameters

obi_num	0	Obi number	sched_exp_time	10000.000000	[s] Scheduled observation exposure time
ascdsver	8.4.3.1	Processing system revision	ontime	10169.599962115	Sum of GTIs [s]
caldsver	4.4.8	 	ontime0	10169.599962115	Sum of GTIs [s]
date	2012-03-30T05:44:22	Date and time of file creation	ontime1	10169.599962115	Sum of GTIs [s]
revision	2	Processing version of data	ontime2	10169.599962115	Sum of GTIs [s]
			ontime3	10169.599962115	Sum of GTIs [s]
			ontime6	10169.599962115	Sum of GTIs [s]
			ontime7	10169.599962115	Sum of GTIs [s]
			l1events	615183	Number of level 1 events

2.1.4 Events

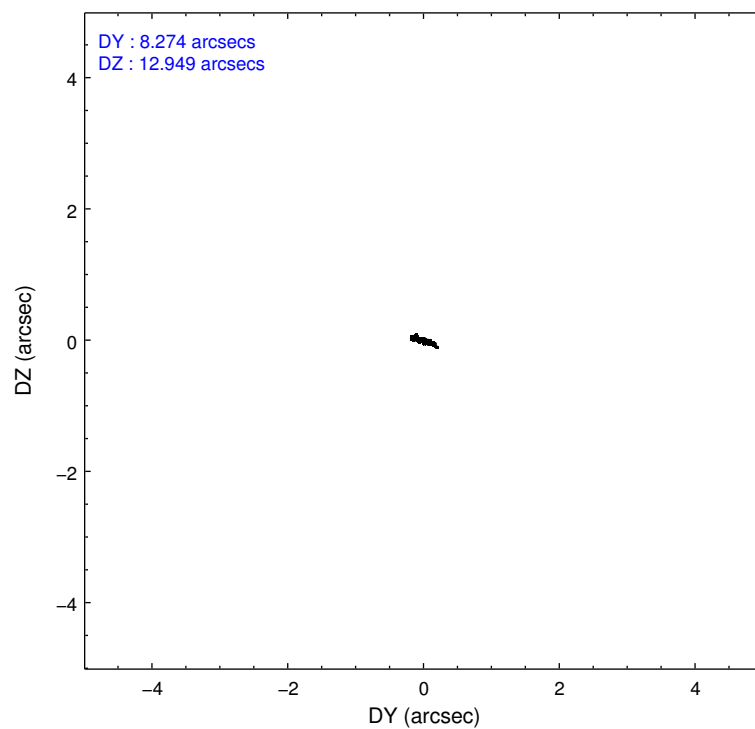
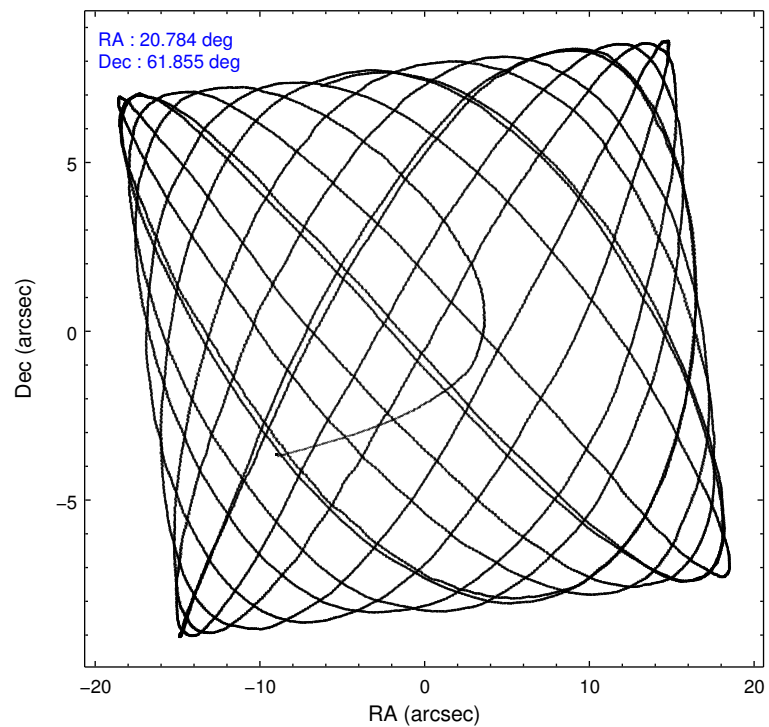
	ccd 0	ccd 1	ccd 2	ccd 3	ccd 6	ccd 7		ccd 0	ccd 1	ccd 2	ccd 3	ccd 6	ccd 7
level 1 events	90135	89518	97566	98030	105881	134053	grade 0 events	5134	4695	5298	5141	4601	4636
rejected events	79363	78453	86976	87511	95300	84201		5%	5%	5%	5%	4%	3%
rejected %	88%	87%	89%	89%	90%	62%	grade 1 events	60	41	65	54	48	116
								0%	0%	0%	0%	0%	0%
							grade 2 events	2566	2809	2468	2246	2470	11224
								2%	3%	2%	2%	2%	8%
							grade 3 events	1109	1195	1111	1134	1191	4777
								1%	1%	1%	1%	1%	3%
							grade 4 events	1101	1139	1043	1118	1117	4752
								1%	1%	1%	1%	1%	3%
							grade 5 events	3899	4138	3646	4581	4710	12690
								4%	4%	3%	4%	4%	9%
							grade 6 events	2025	2437	1832	2025	2437	30003
								2%	2%	1%	2%	2%	22%
							grade 7 events	74241	73064	82103	81731	89307	65855
								82%	81%	84%	83%	84%	49%

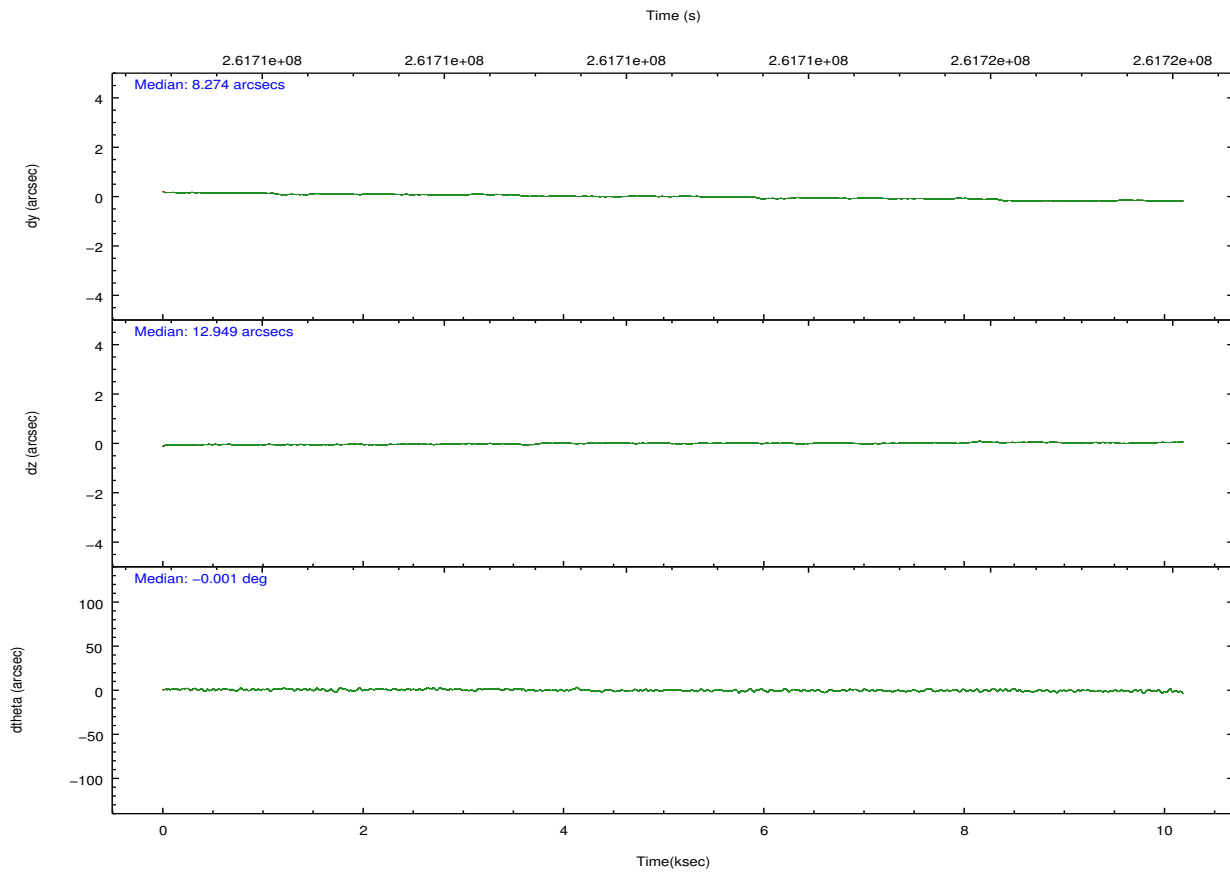
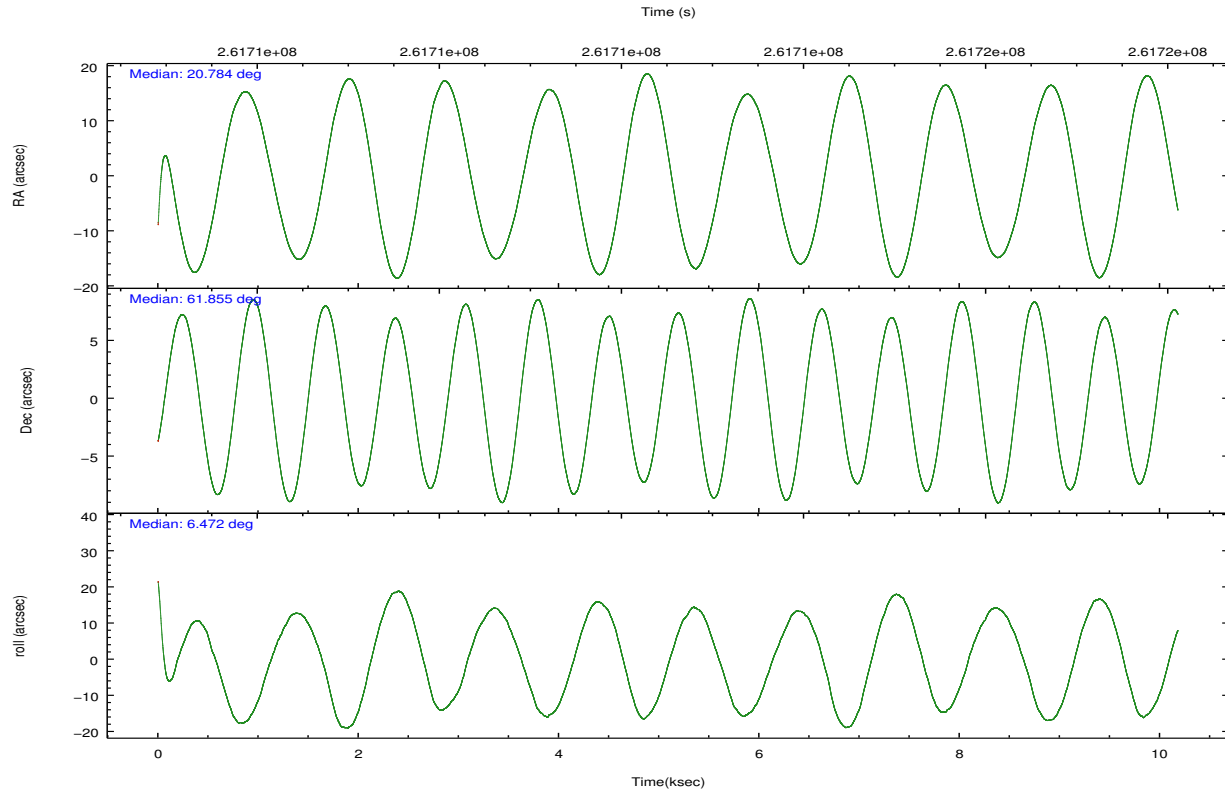
2.2 Compared Parameters

Parameter	Planned	Actual
Instrument	ACIS	ACIS
Detector	ACIS-012367	ACIS-012367
Grating	NONE	NONE
Data mode	FAINT	FAINT
Observation mode	POINTING	POINTING
[deg] Pointing RA	20.737902	20.78445625284117
[deg] Pointing Dec	61.838693	61.85510396639175
[deg] Pointing Roll	6.312159	6.479812297319641
[mm] SIM focus pos	-0.782348	-0.7809083437167272
[mm] SIM defocus	0	0.001439871863259334
[mm] SIM translation stage pos	-233.592463	-233.5874344608287
[mm] SIM translation stage offset	0	-0.005018542100998502
[s] Observation start time (MET)	261707607.184000	261705988.0455
Observation start date	2006-04-18T00:32:22	2006-04-18T00:06:28
[s] Observation end time (MET)	261717607.184000	261718251.14607
Observation end date	2006-04-18T03:19:02	2006-04-18T03:30:51
Read mode	TIMED	TIMED

Parameter	Planned	Actual
Obspar format version number	7	7
Obspar file type	PREDICTED	ACTUAL
Obspar update status	NONE	UPDATED
Number of optional ACIS chips dropped	0	0
On-chip summing requested	N	N
Subarray requested	NONE	NONE
Alternating exposures requested	N	N
[s] Primary exposure time	0.000000	3.2

2.3 Aspect



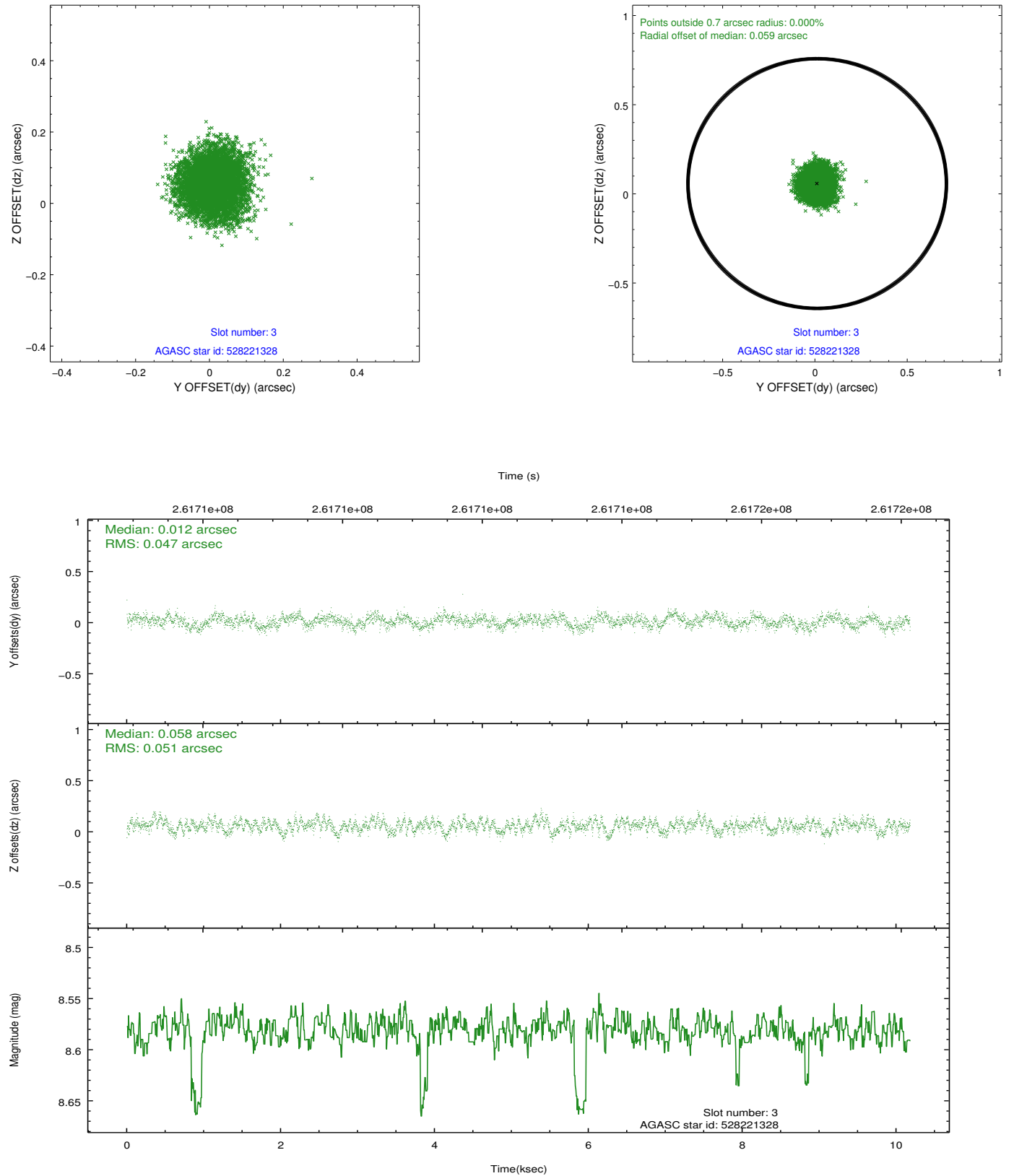


Slot Statistics

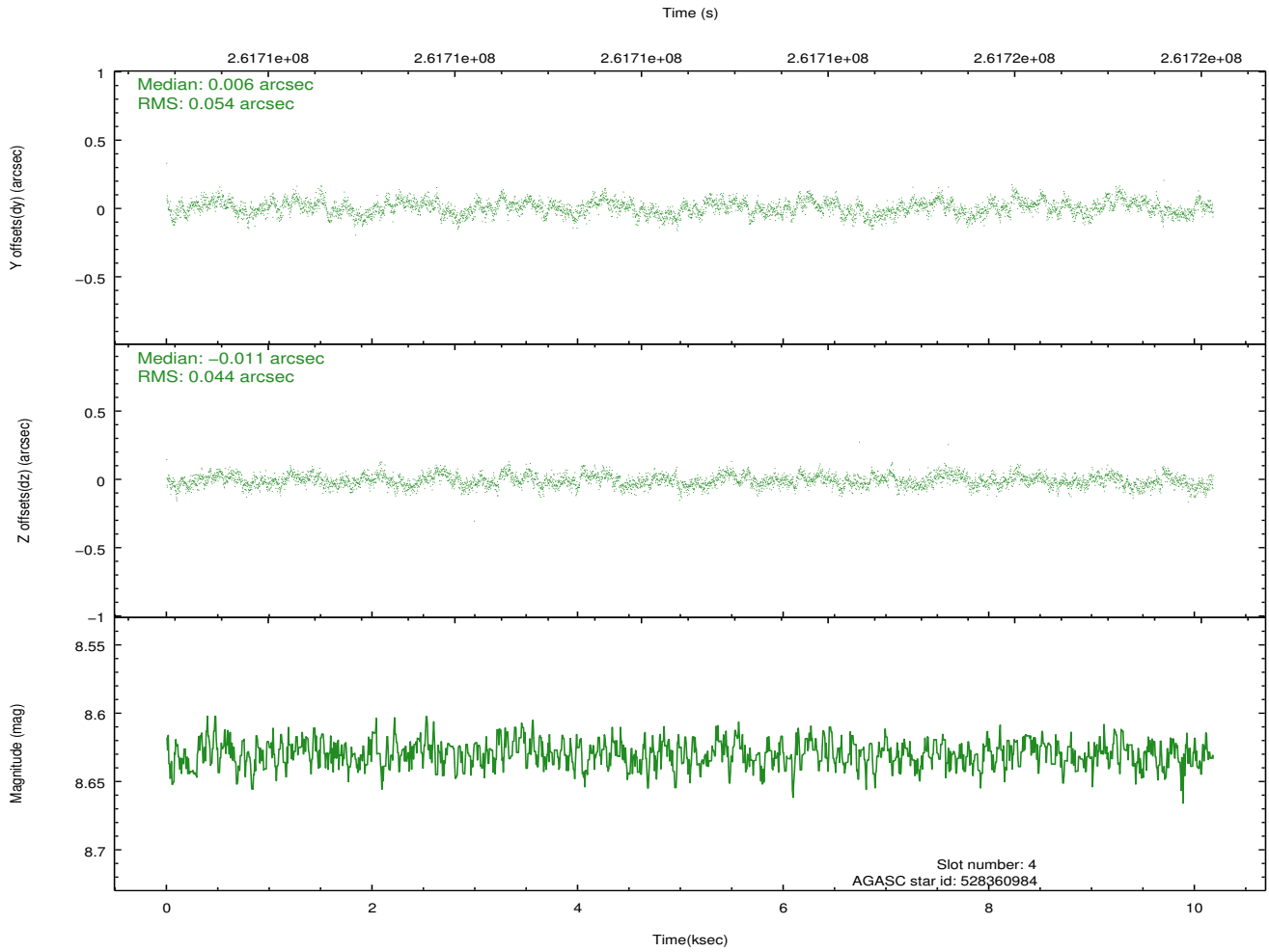
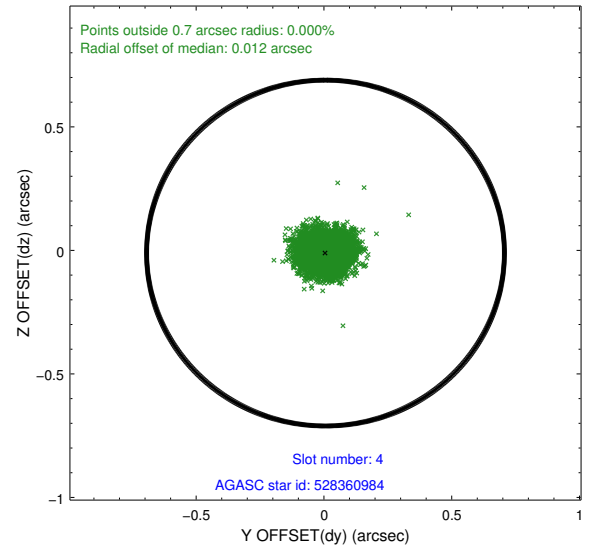
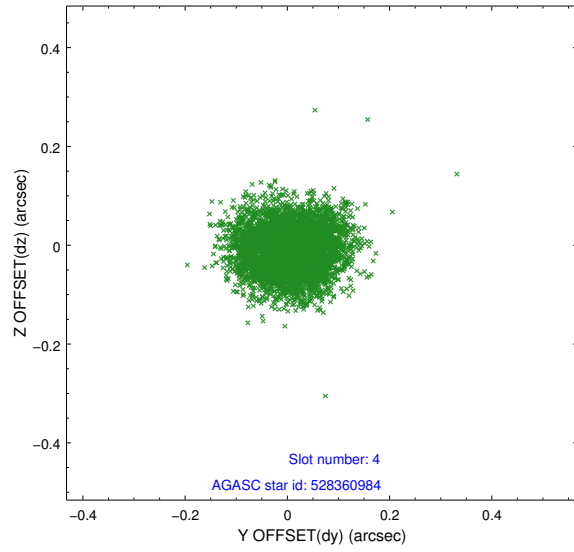
slot	status	id	mag	n_pts	med_dy	med_dz	dr1	dr2	ra	dec	mean_y	mean_z
0	FID	ACIS-I-1	7.24	2484	-0.054	0.051	0.010	0.016	0.000000	0.000000	931.30	-836.46
1	FID	ACIS-I-2	7.14	2483	-0.158	-0.089	0.009	0.015	0.000000	0.000000	-762.60	-843.26
2	FID	ACIS-I-4	7.19	2484	0.113	0.103	0.009	0.020	0.000000	0.000000	2151.17	1063.10
3	GUIDE	528221328	8.58	4949	0.012	0.058	0.074	0.116	19.816566	61.693900	-1619.32	-334.31
4	GUIDE	528360984	8.63	4963	0.006	-0.011	0.074	0.118	21.746936	61.417866	1562.37	-1683.32
5	GUIDE	528752704	9.04	4957	0.084	-0.158	0.079	0.122	20.061548	61.946704	-1094.23	517.79
6	GUIDE	528237912	8.21	4965	-0.042	0.107	0.063	0.103	20.734920	61.176293	-267.07	-2369.31
7	GUIDE	528893368	9.09	4945	-0.055	0.005	0.083	0.133	21.584694	62.304816	1593.60	1521.21

2.4 Star Slots

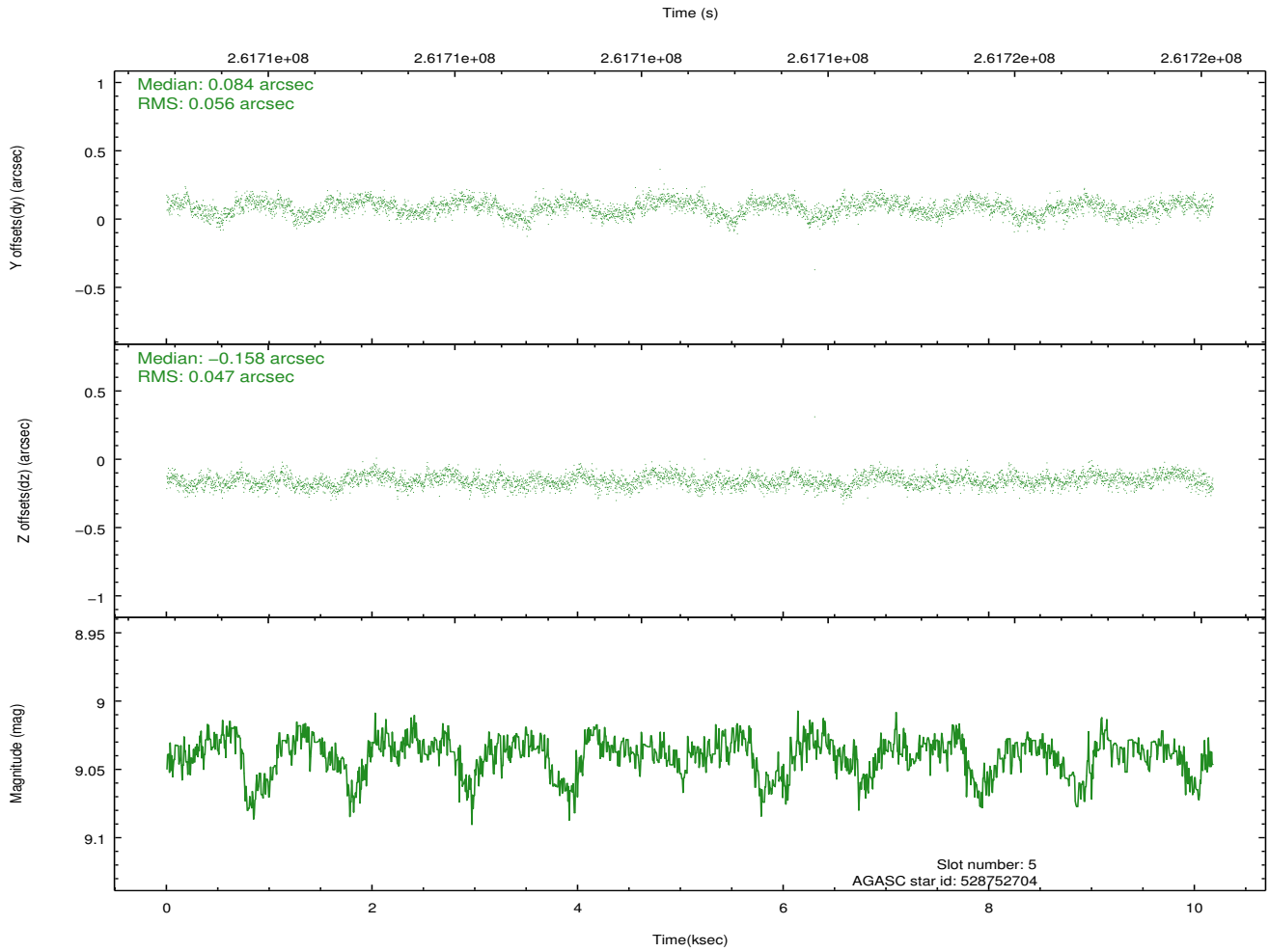
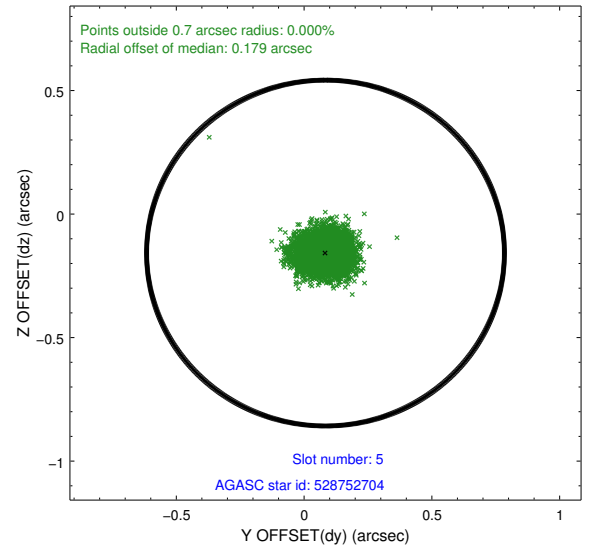
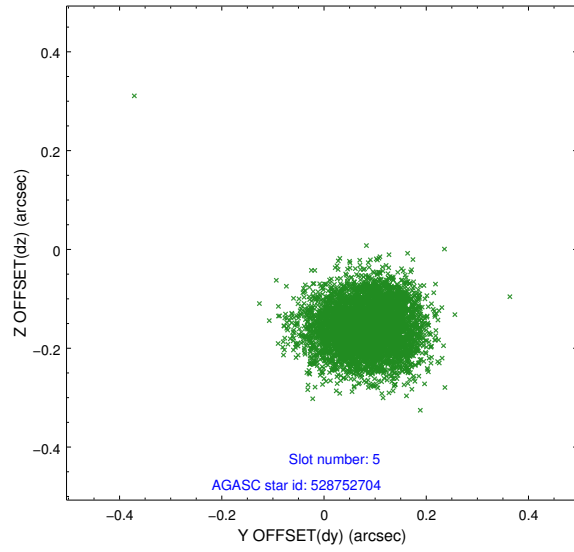
2.4.1 Slot 3



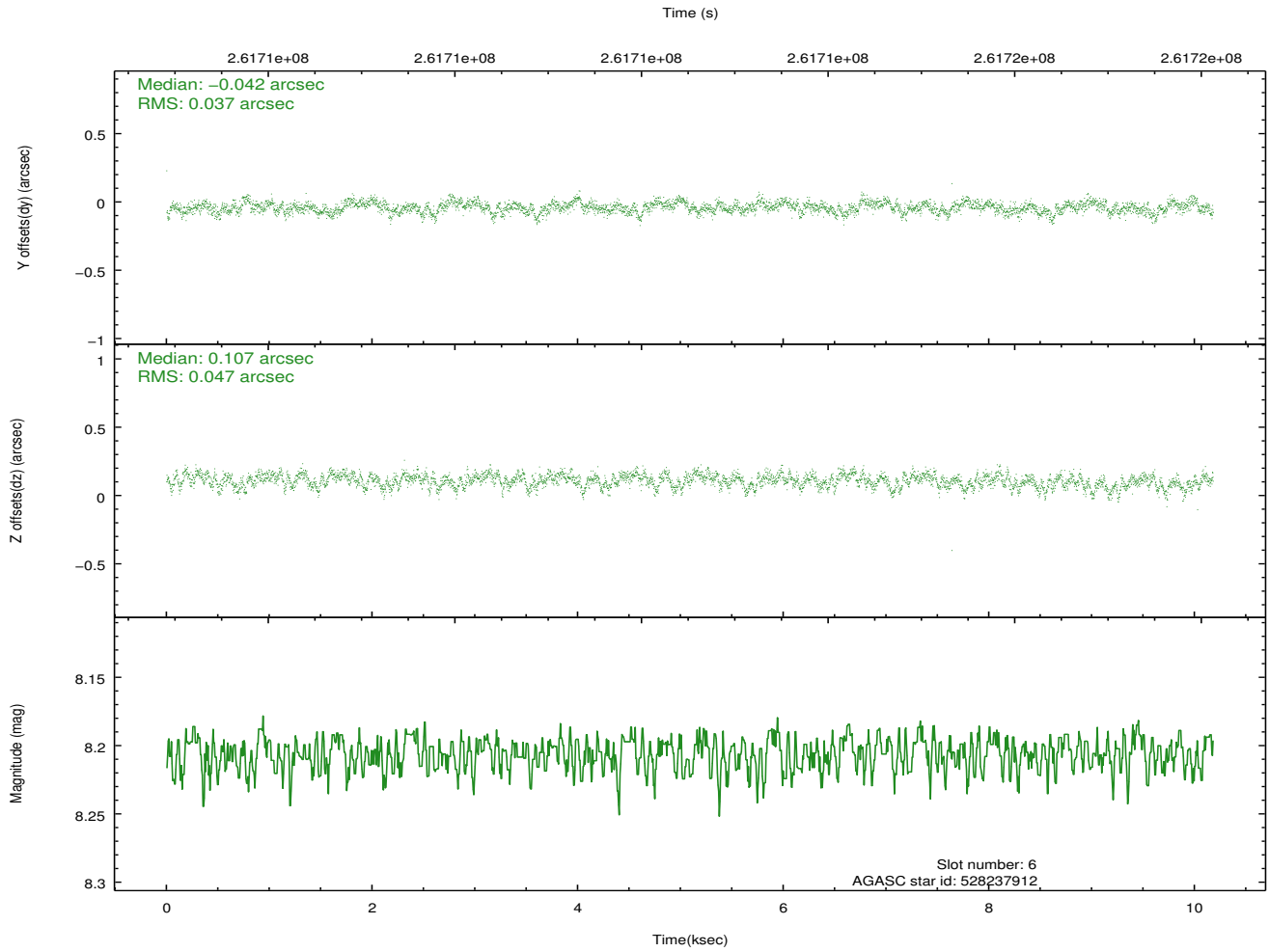
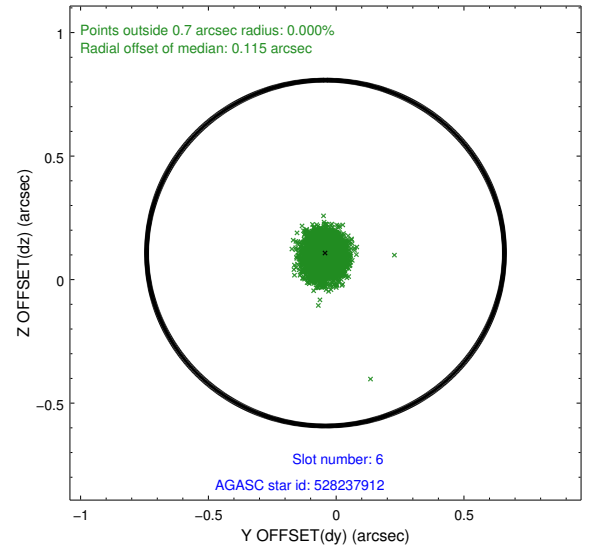
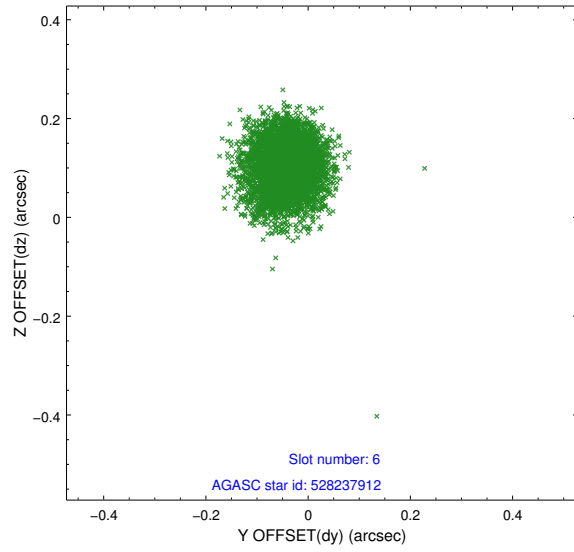
2.4.2 Slot 4



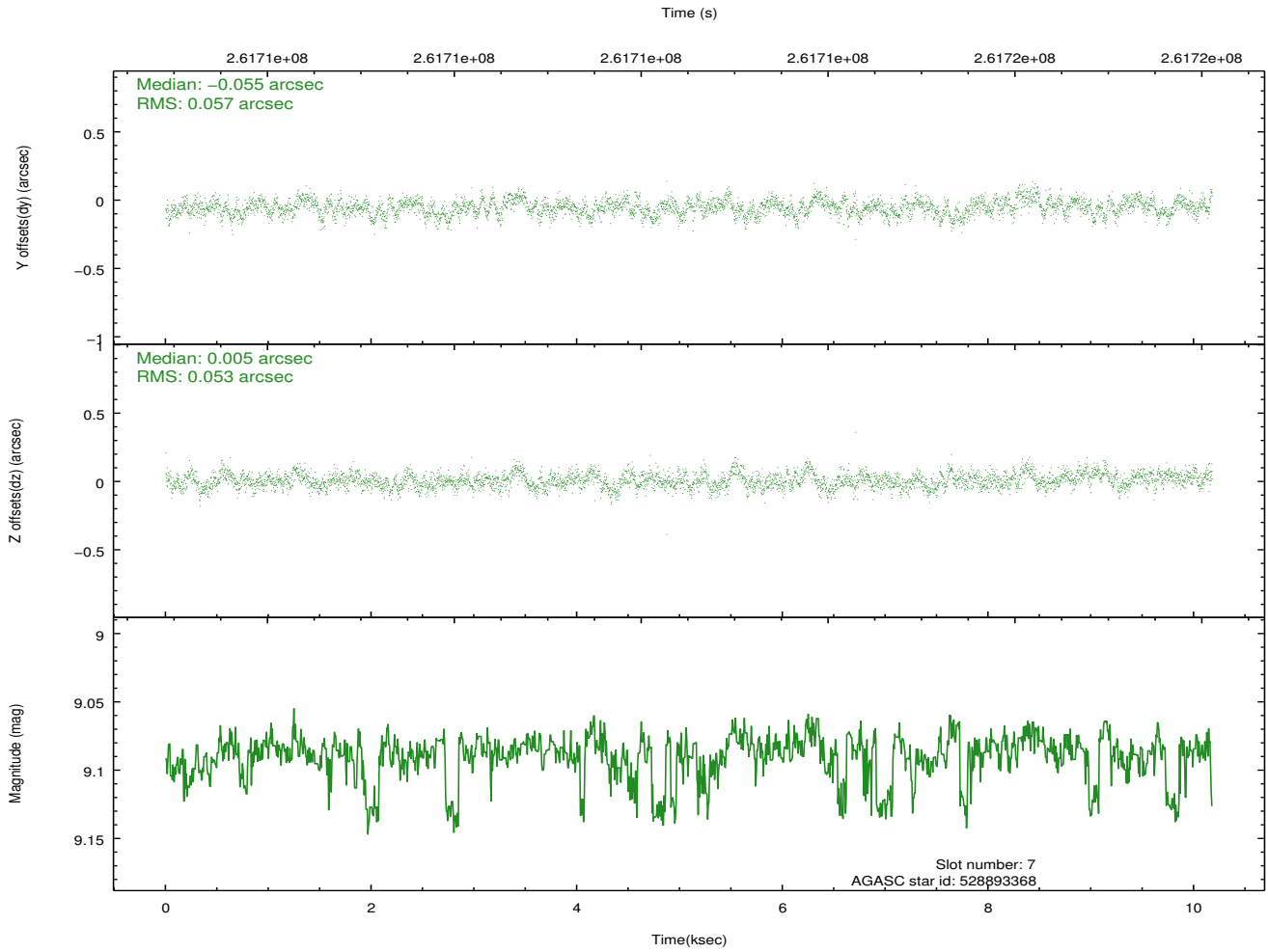
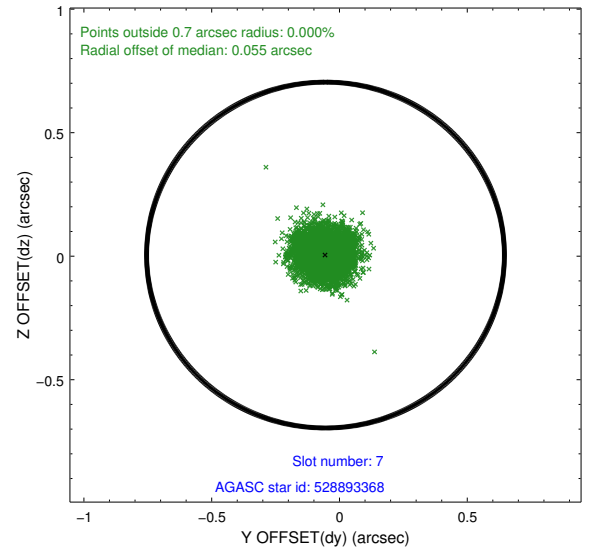
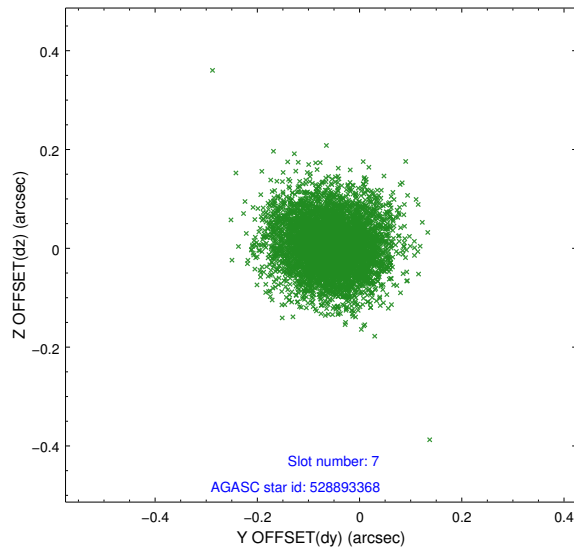
2.4.3 Slot 5



2.4.4 Slot 6

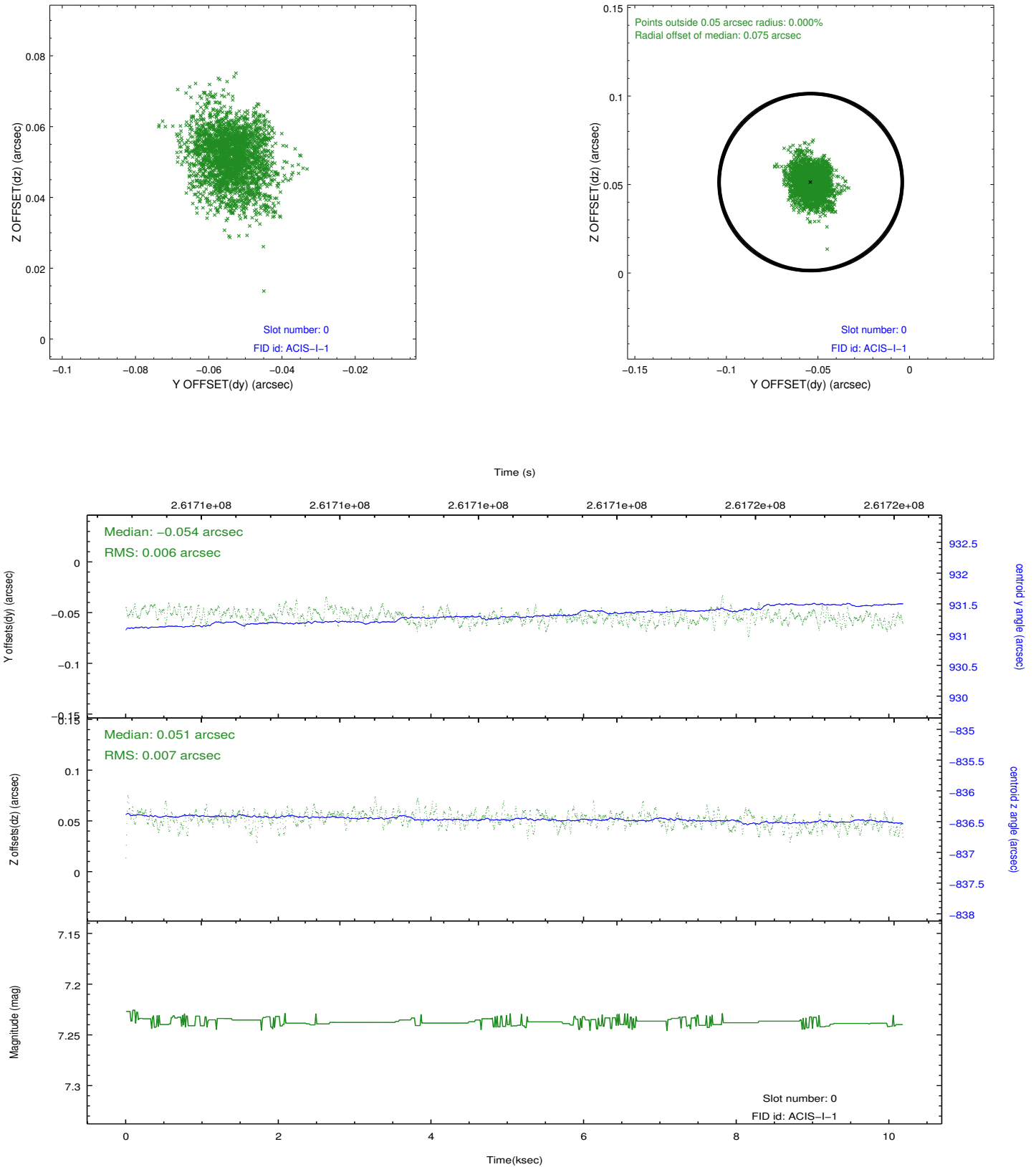


2.4.5 Slot 7

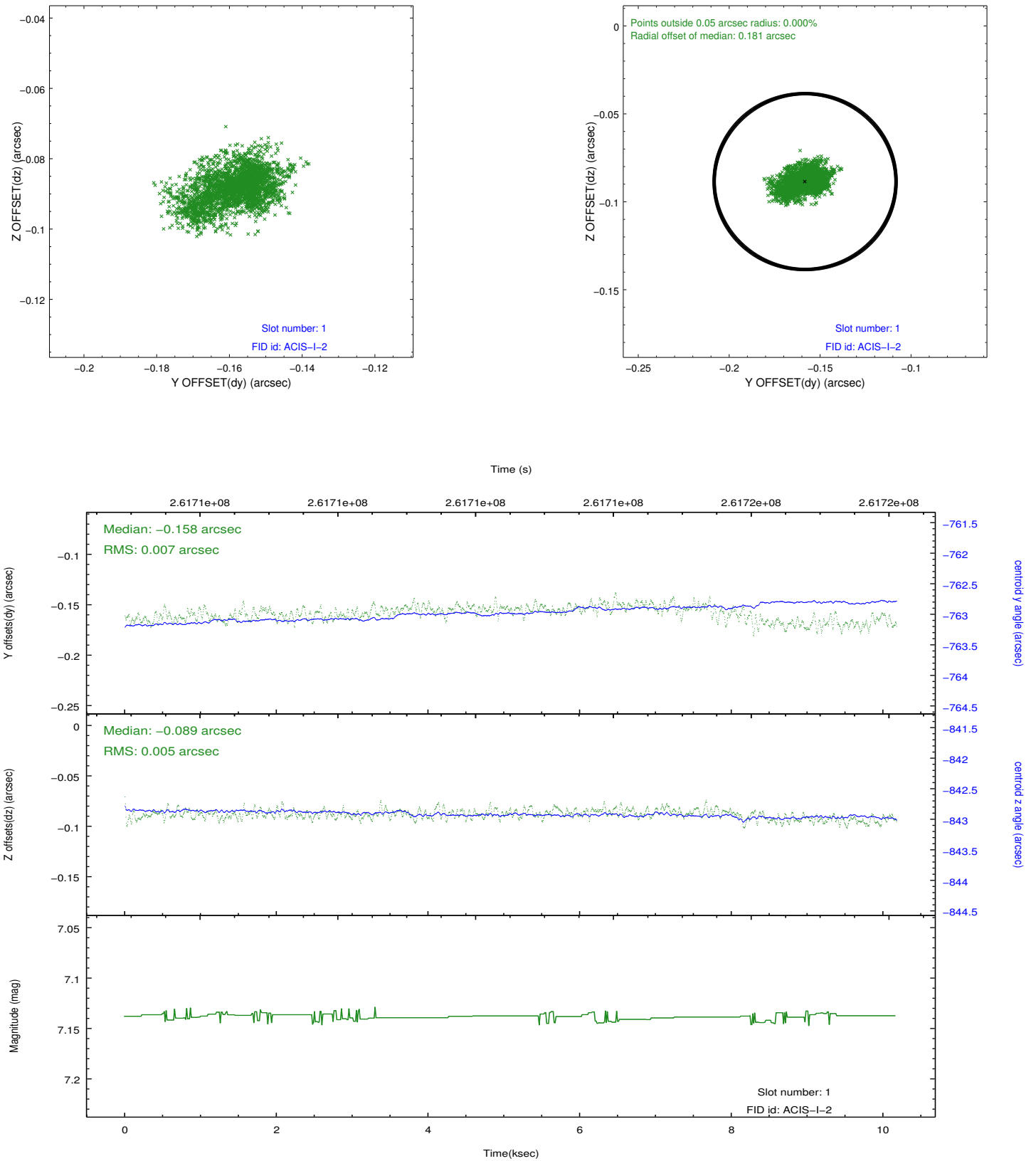


2.5 FID Slots

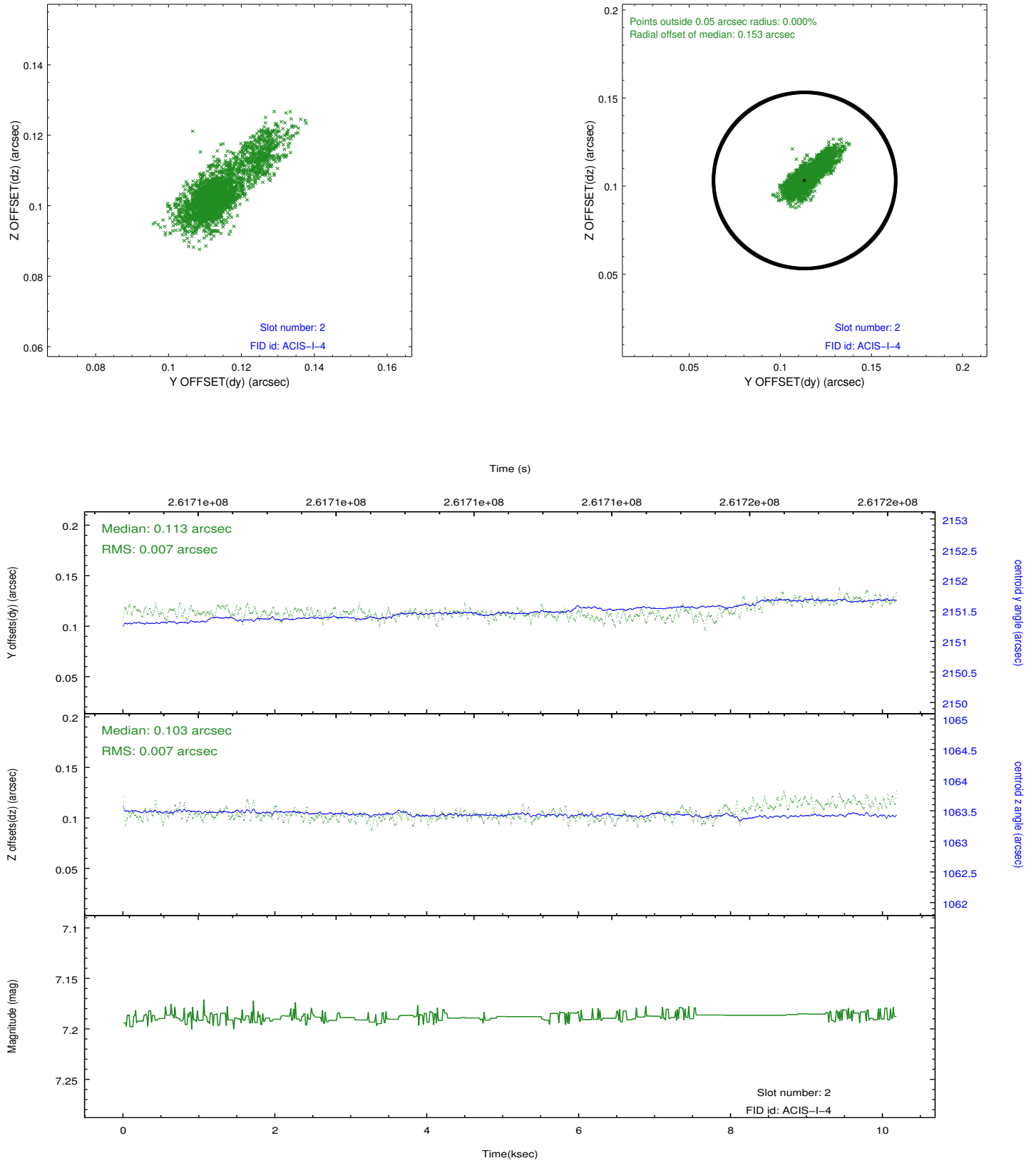
2.5.1 Slot 0



2.5.2 Slot 1



2.5.3 Slot 2



A Summary

A.1 Status

V&V Scientist	Beth Sundheim
V&V Date (YYYY-MM-DD)	2012.04.02
V&V Edition	1
V&V Disposition and Status	OK
V&V Charge Time	10.1695999

A.2 Comments