

V&V Reference Report

L2 ASCDS Version : 8.5.1.1

Observation 5935 - L2 Version 4
Chandra X-Ray Center

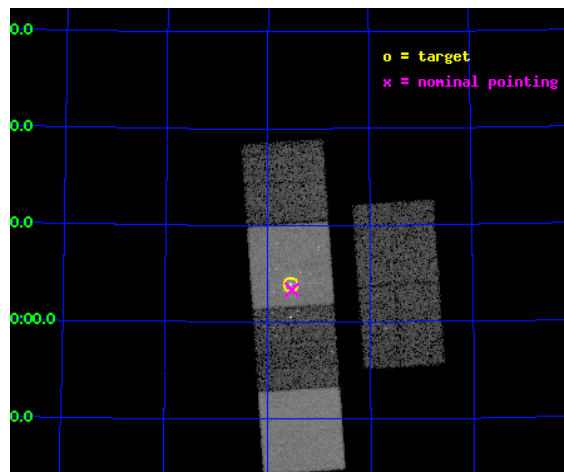
L2 Processing Date : Dec 23 2012

Contents

1	Front	2
2	OBI	3
2.1	OBI	3
2.1.1	Images	3
2.1.2	Bias	3
2.1.3	Parameters	4
2.1.4	Events	4
2.2	Compared Parameters	5
2.3	Aspect	6
2.4	Star Slots	9
2.4.1	Slot 3	9
2.4.2	Slot 4	10
2.4.3	Slot 5	11
2.4.4	Slot 6	12
2.4.5	Slot 7	13
2.5	FID Slots	14
2.5.1	Slot 0	14
2.5.2	Slot 1	15
2.5.3	Slot 2	16
A	Summary	17
A.1	Status	17
A.2	Comments	17

1 Front

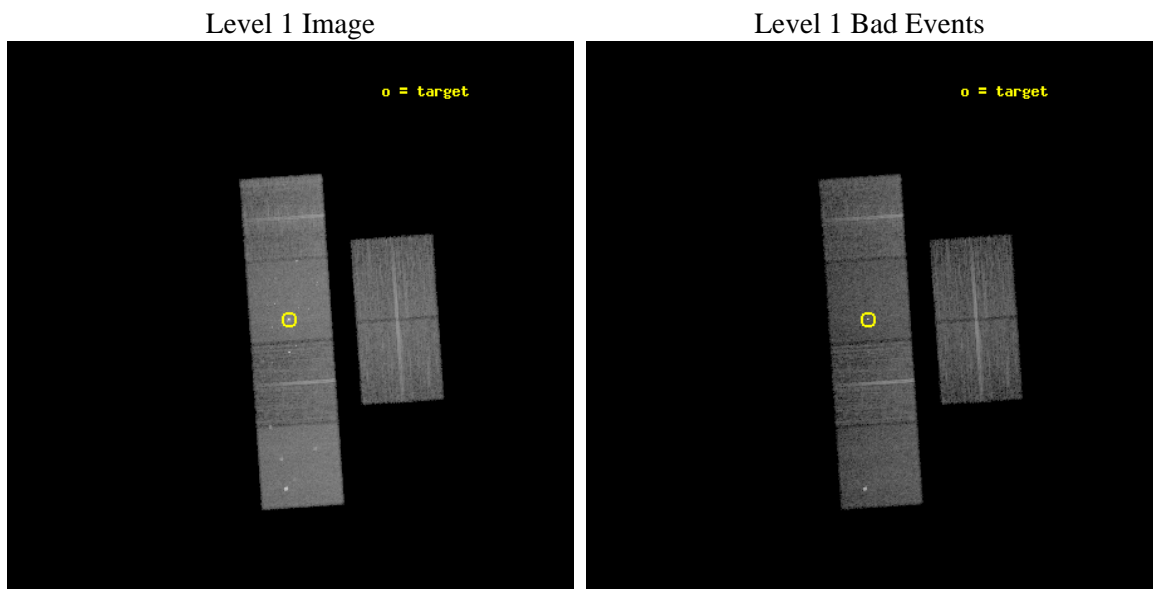
seq_num	600454	Sequence number
obs_id	5935	Observation id
title	An Unprecedented View of a Galaxy's Dynamic X-ray Source Population	
observer	Prof. David Pooley	Principal investigator
object	M81	Source name
dtcycle	0	
cycle	P	events from which exps? Prim/Second/Both
ra_targ	148.888333	Observer's specified target RA [deg]
dec_targ	69.065306	Observer's specified target Dec [deg]
ra_nom	148.88172072377	Nominal RA [deg]
dec_nom	69.055923505717	Nominal Dec [deg]
roll_nom	266.09220387361	Nominal Roll [deg]
revision	4	Processing version of data
ontime	11119.999958575	Sum of GTIs [s]
livetime	10979.191823439	Livetime [s]
ontime2	11119.999958575	Sum of GTIs [s]
ontime3	11119.999958575	Sum of GTIs [s]
ontime5	11119.999958575	Sum of GTIs [s]
ontime6	11119.999958575	Sum of GTIs [s]
ontime7	11119.999958575	Sum of GTIs [s]
ontime8	11119.999958575	Sum of GTIs [s]
l2events	145667	Number of level 2 events



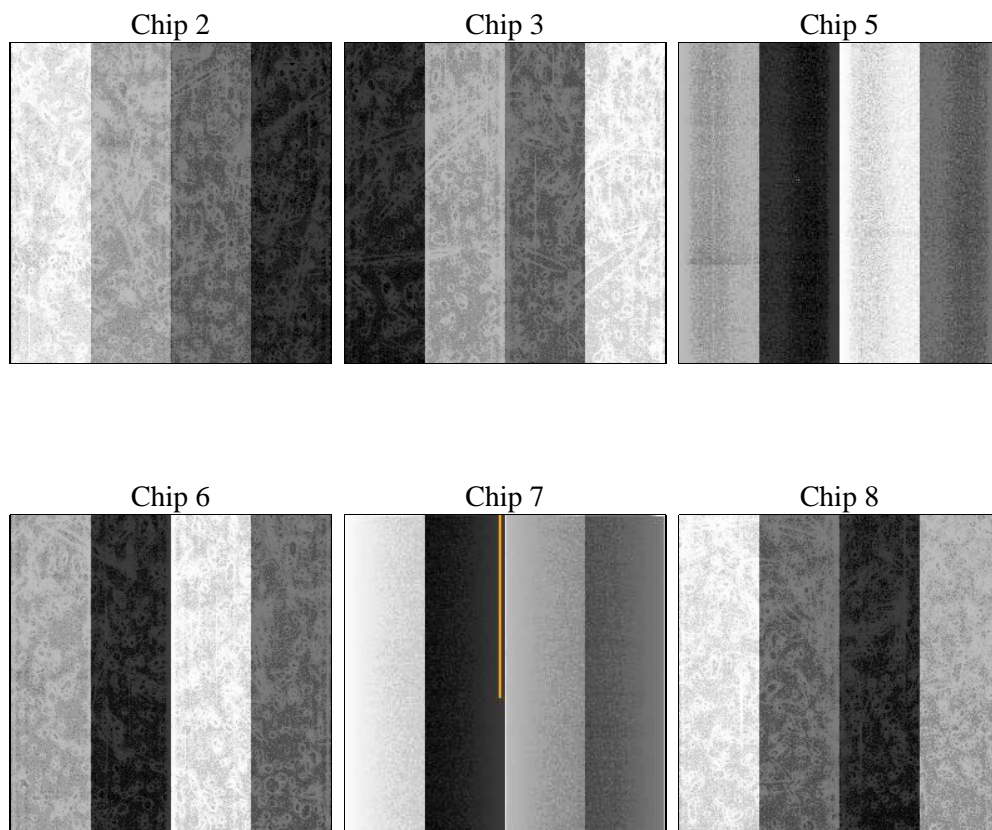
2 OBI

2.1 OBI

2.1.1 Images



2.1.2 Bias



2.1.3 Parameters

obi_num	0	Obi number	sched_exp_time	11000.114000	[s] Scheduled observation exposure time
ascdsver	8.5.1.1	Processing system revision	ontime	11119.999958575	Sum of GTIs [s]
caldsver	4.5.5	 	ontime2	11119.999958575	Sum of GTIs [s]
date	2012-12-23T18:09:26	Date and time of file creation	ontime3	11119.999958575	Sum of GTIs [s]
revision	4	Processing version of data	ontime5	11119.999958575	Sum of GTIs [s]
			ontime6	11119.999958575	Sum of GTIs [s]
			ontime7	11119.999958575	Sum of GTIs [s]
			ontime8	11119.999958575	Sum of GTIs [s]
			l1events	715468	Number of level 1 events

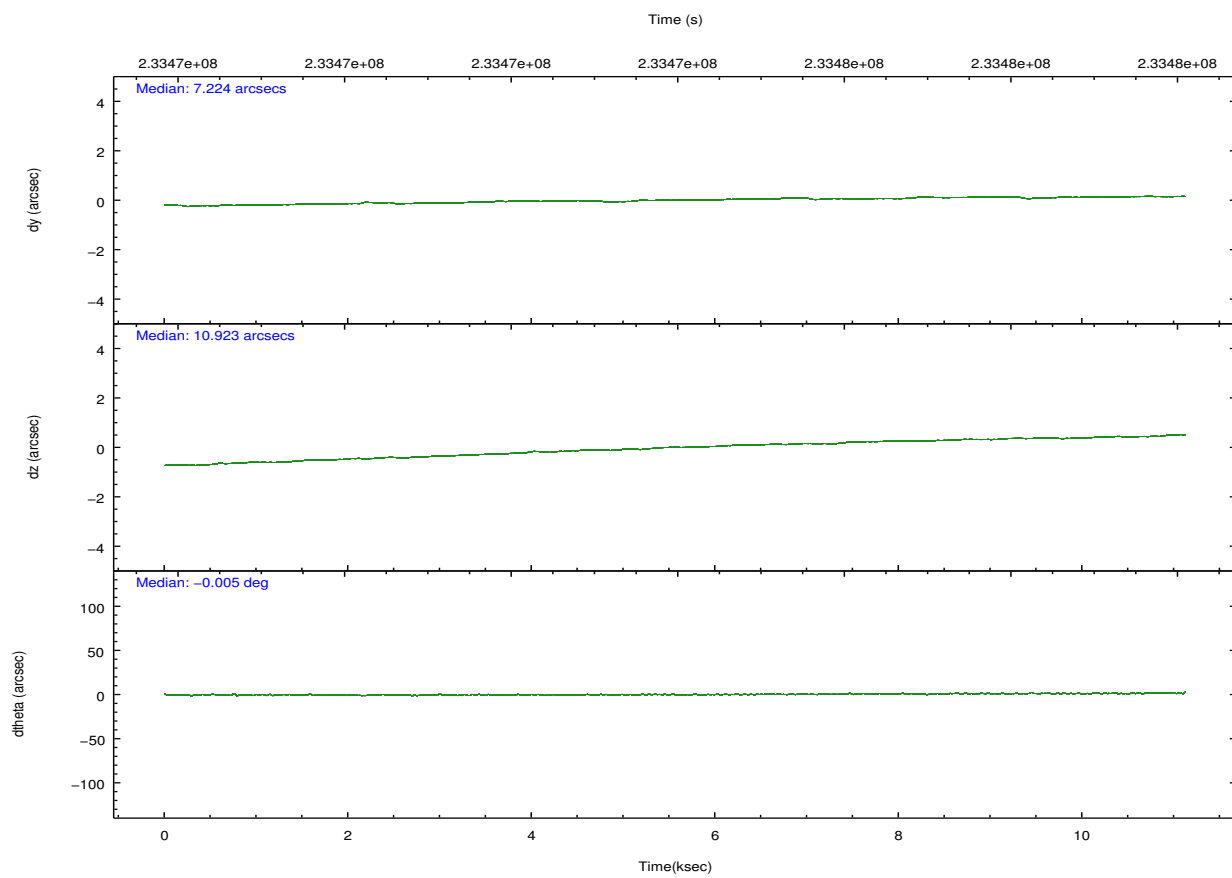
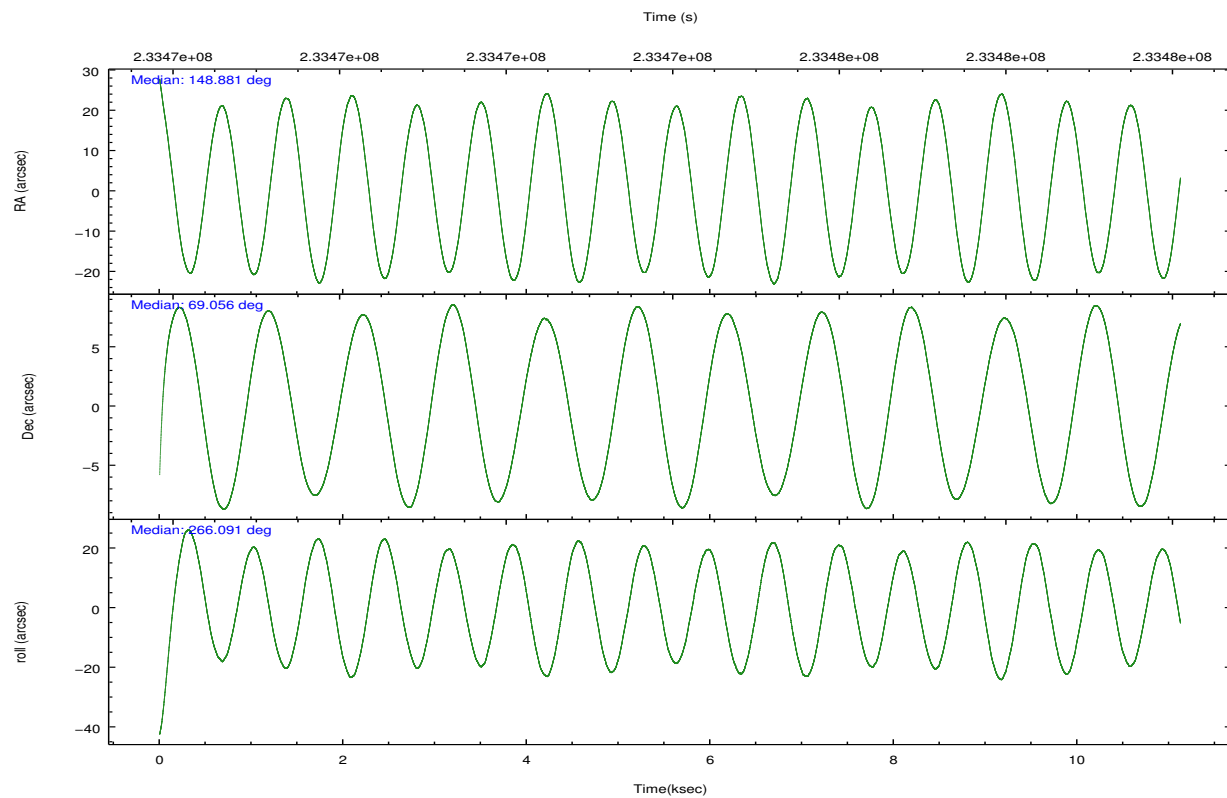
2.1.4 Events

	ccd 2	ccd 3	ccd 5	ccd 6	ccd 7	ccd 8		ccd 2	ccd 3	ccd 5	ccd 6	ccd 7	ccd 8
level 1 events	99455	97633	149965	101244	143756	123415	grade 0 events	5148	4981	6841	6443	6977	8525
rejected events	89422	87830	91416	89136	89039	100547		5%	5%	4%	6%	4%	6%
rejected %	89%	89%	60%	88%	61%	81%	grade 1 events	52	48	2208	92	213	79
								0%	0%	1%	0%	0%	0%
							grade 2 events	2376	2166	20451	2635	12894	5894
								2%	2%	13%	2%	8%	4%
							grade 3 events	1061	1118	2746	1170	5700	3028
								1%	1%	1%	1%	3%	2%
							grade 4 events	1086	1082	2824	1135	5562	2696
								1%	1%	1%	1%	3%	2%
							grade 5 events	3859	4364	10946	4597	13144	6003
								3%	4%	7%	4%	9%	4%
							grade 6 events	1950	2012	35311	2425	31413	6822
								1%	2%	23%	2%	21%	5%
							grade 7 events	83923	81862	68638	82747	67853	90368
								84%	83%	45%	81%	47%	73%

2.2 Compared Parameters

Parameter	Planned	Actual	Parameter	Planned	Actual
Instrument	ACIS	ACIS	Obspar format version number	7	7
Detector	ACIS-235678	ACIS-235678	Obspar file type	PREDICTED	ACTUAL
Grating	NONE	NONE	Obspar update status	NONE	UPDATED
Data mode	FAINT	FAINT	Number of optional ACIS chips dropped	0	0
Observation mode	POINTING	POINTING	On-chip summing requested	N	N
[deg] Pointing RA	148.847311	148.8817207237691	Subarray requested	NONE	NONE
[deg] Pointing Dec	69.080231	69.05592350571688	Alternating exposures requested	N	N
[deg] Pointing Roll	265.967731	266.0922038736073	[s] Primary exposure time	0.000000	3.2
[mm] SIM focus pos	-0.684267	-0.6828225247311905			
[mm] SIM defocus	0	0.001444936568705701			
[mm] SIM translation stage pos	-190.132523	-190.1400660498719			
[mm] SIM translation stage offset	0	0.00754346686406393			
[s] Observation start time (MET)	233468530.184000	233466445.95561			
Observation start date	2005-05-26T04:21:06	2005-05-26T03:47:25			
[s] Observation end time (MET)	233479530.184000	233479746.35622			
Observation end date	2005-05-26T07:24:26	2005-05-26T07:29:06			
Read mode	TIMED	TIMED			

2.3 Aspect

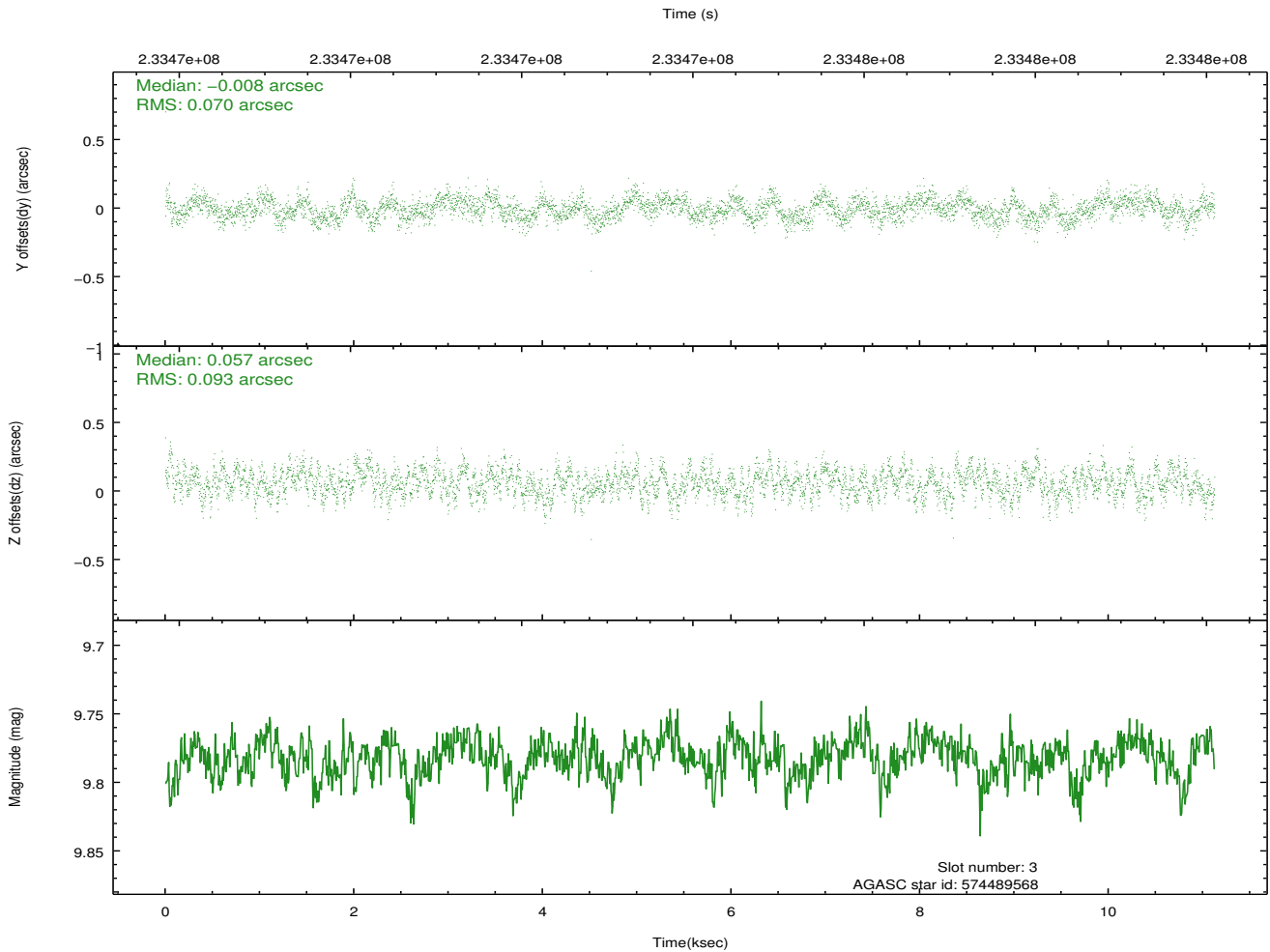
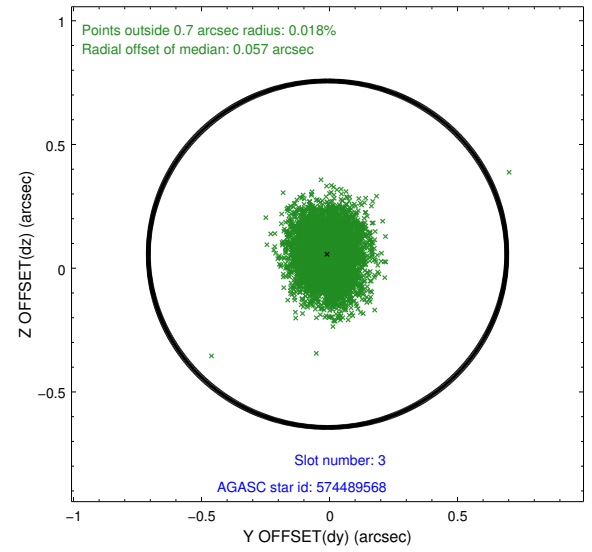
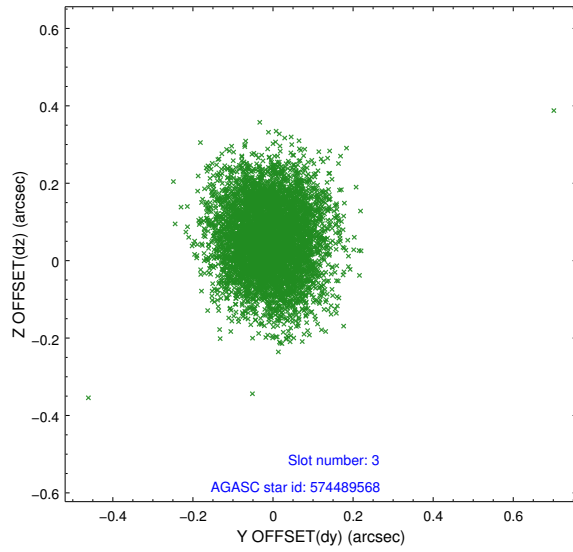


Slot Statistics

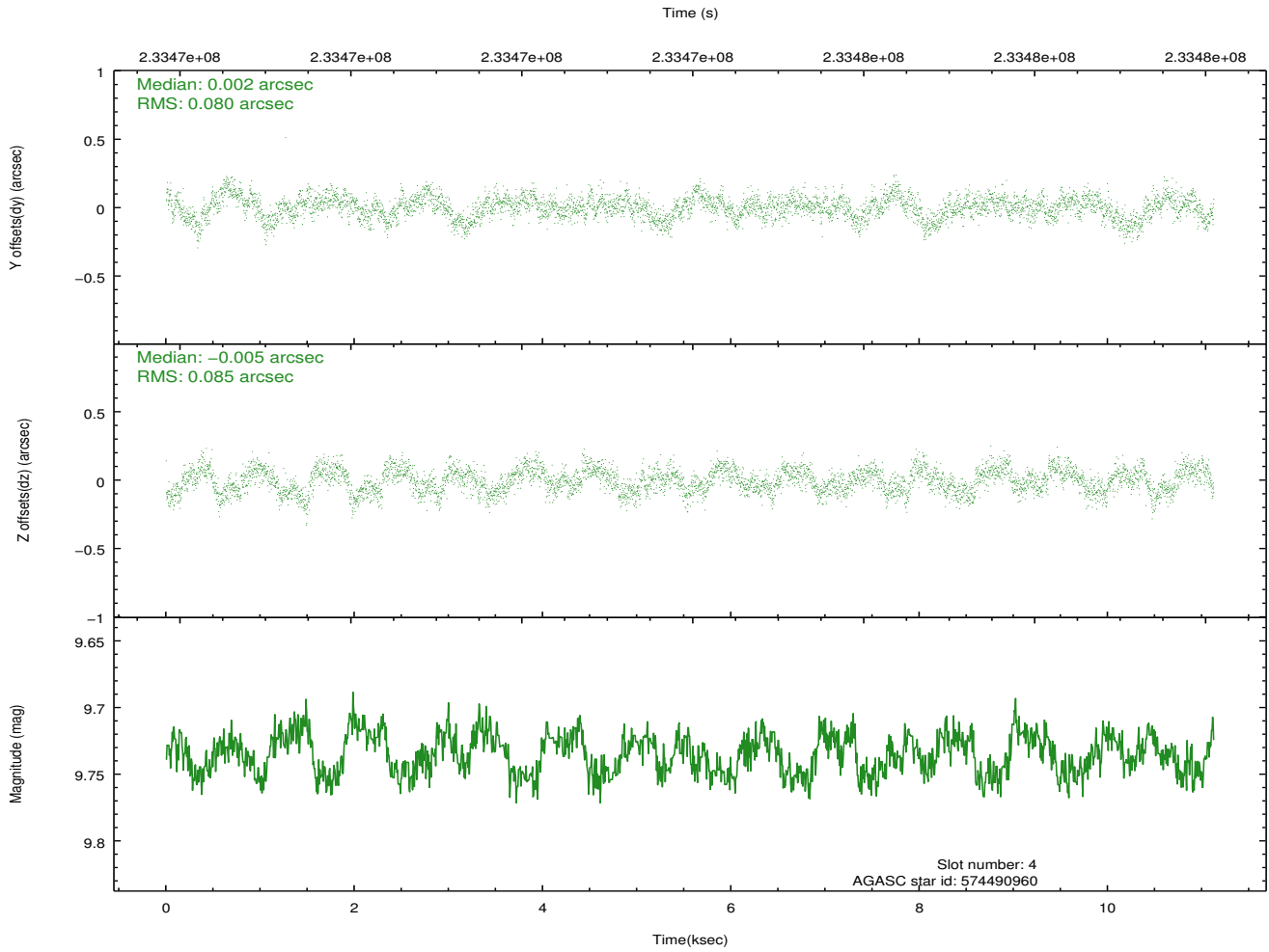
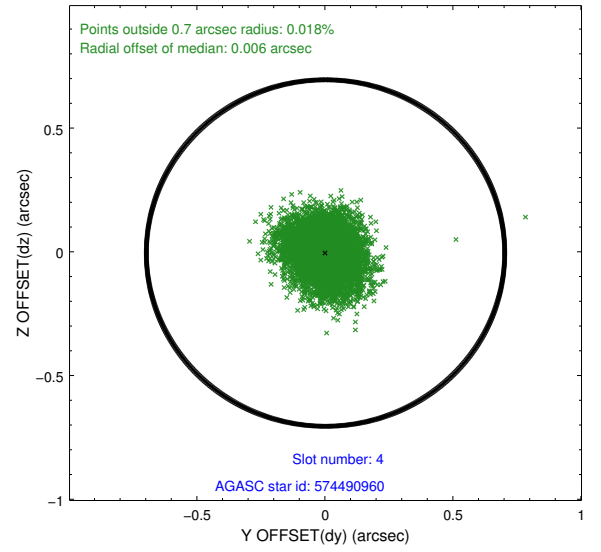
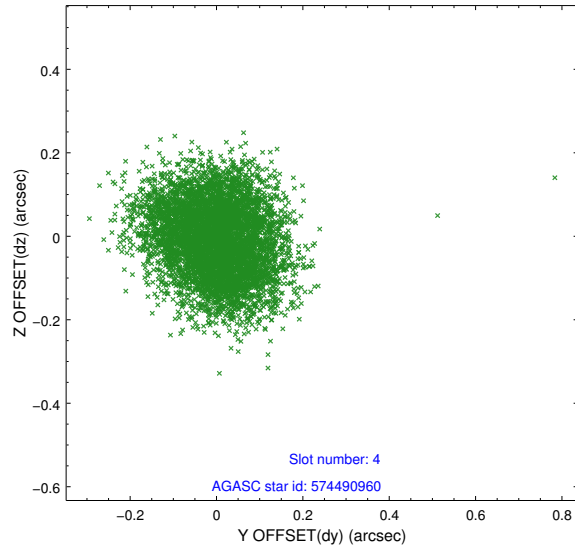
slot	status	id	mag	n_pts	med_dy	med_dz	dr1	dr2	ra	dec	mean_y	mean_z
0	FID	ACIS-S-2	7.10	2714	-0.050	-0.024	0.010	0.015	0.000000	0.000000	-759.99	-1732.17
1	FID	ACIS-S-4	7.20	2714	0.095	0.030	0.008	0.013	0.000000	0.000000	2153.19	175.94
2	FID	ACIS-S-5	7.23	2714	-0.076	0.002	0.008	0.014	0.000000	0.000000	-1812.30	170.04
3	GUIDE	574489568	9.78	5423	-0.008	0.057	0.123	0.198	147.223974	69.438157	-1167.70	-2139.24
4	GUIDE	574490960	9.74	5423	0.002	-0.005	0.126	0.196	148.185918	69.658768	-2023.41	-972.47
5	GUIDE	574491280	9.35	5424	-0.048	0.086	0.104	0.167	148.611567	69.450135	-1307.36	-391.12
6	GUIDE	574498696	9.05	5427	0.289	-0.070	0.095	0.158	146.881317	68.486979	2272.04	-2441.10
7	GUIDE	574491872	9.25	5424	-0.224	-0.069	0.100	0.159	147.207613	69.765453	-2342.04	-2211.98

2.4 Star Slots

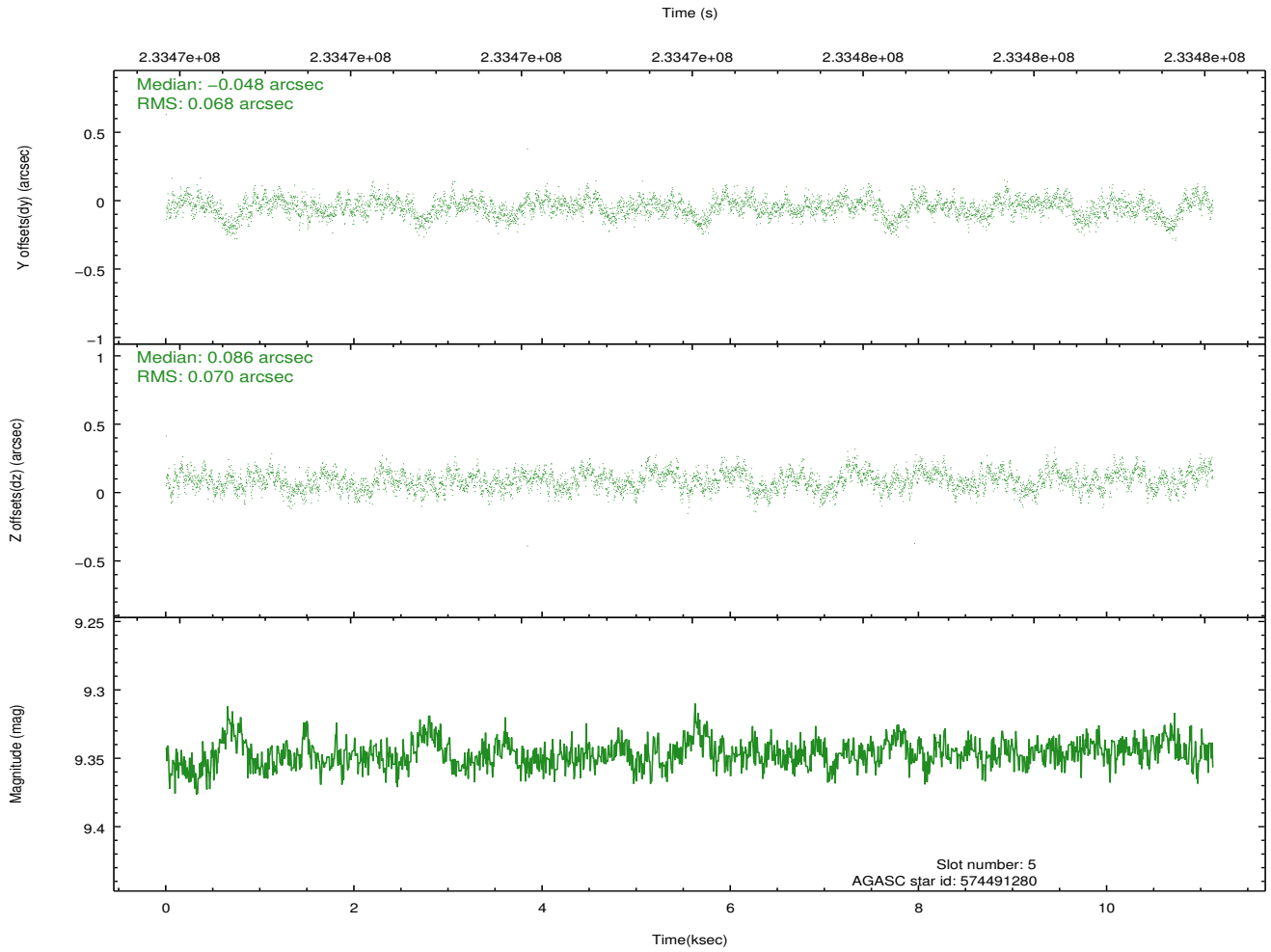
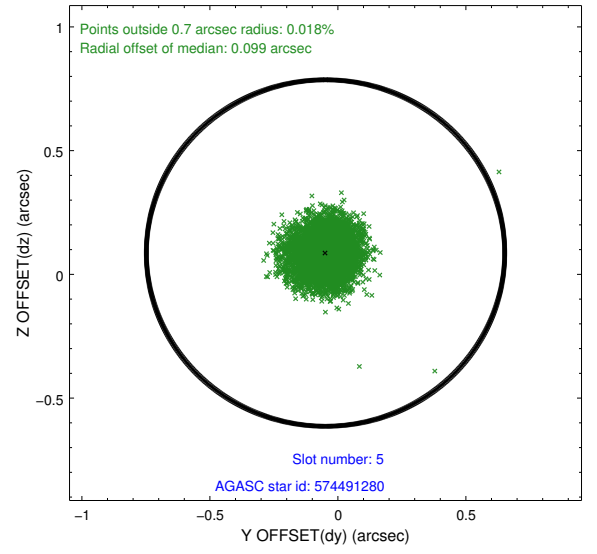
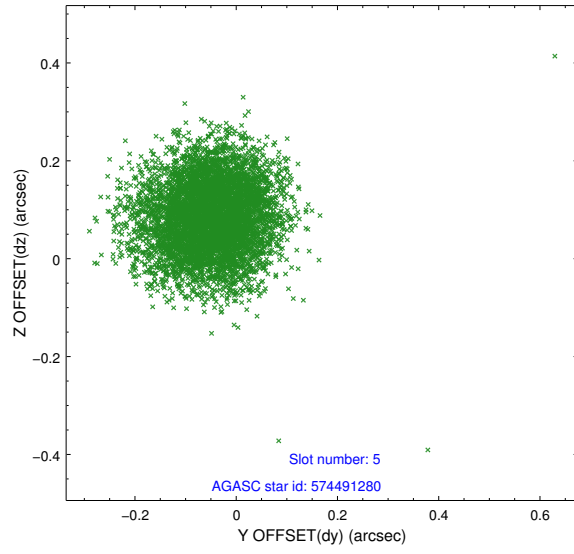
2.4.1 Slot 3



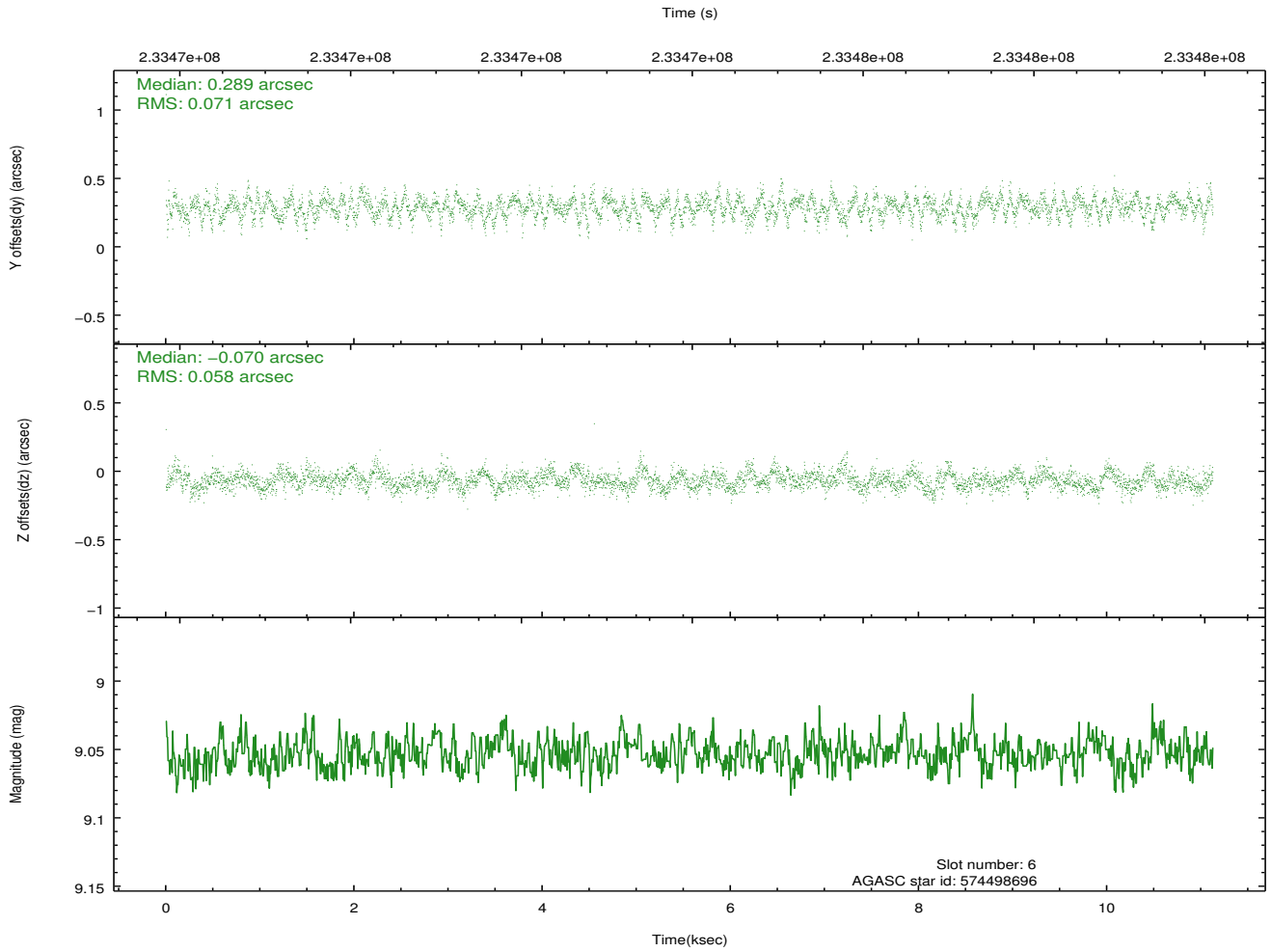
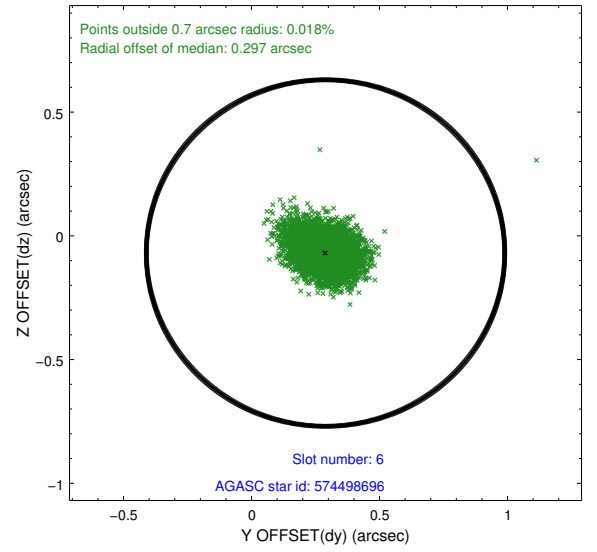
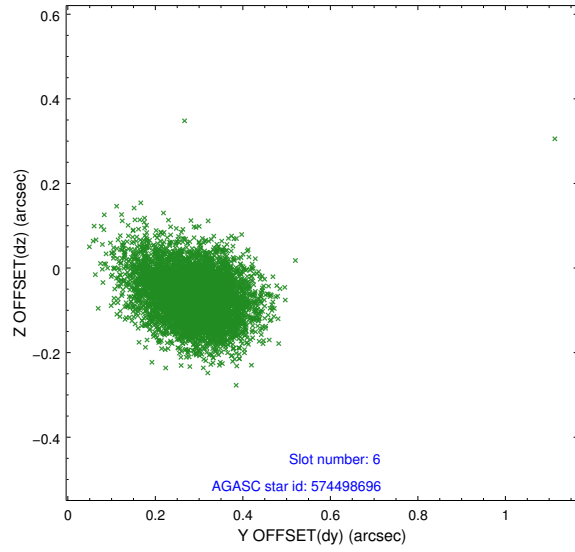
2.4.2 Slot 4



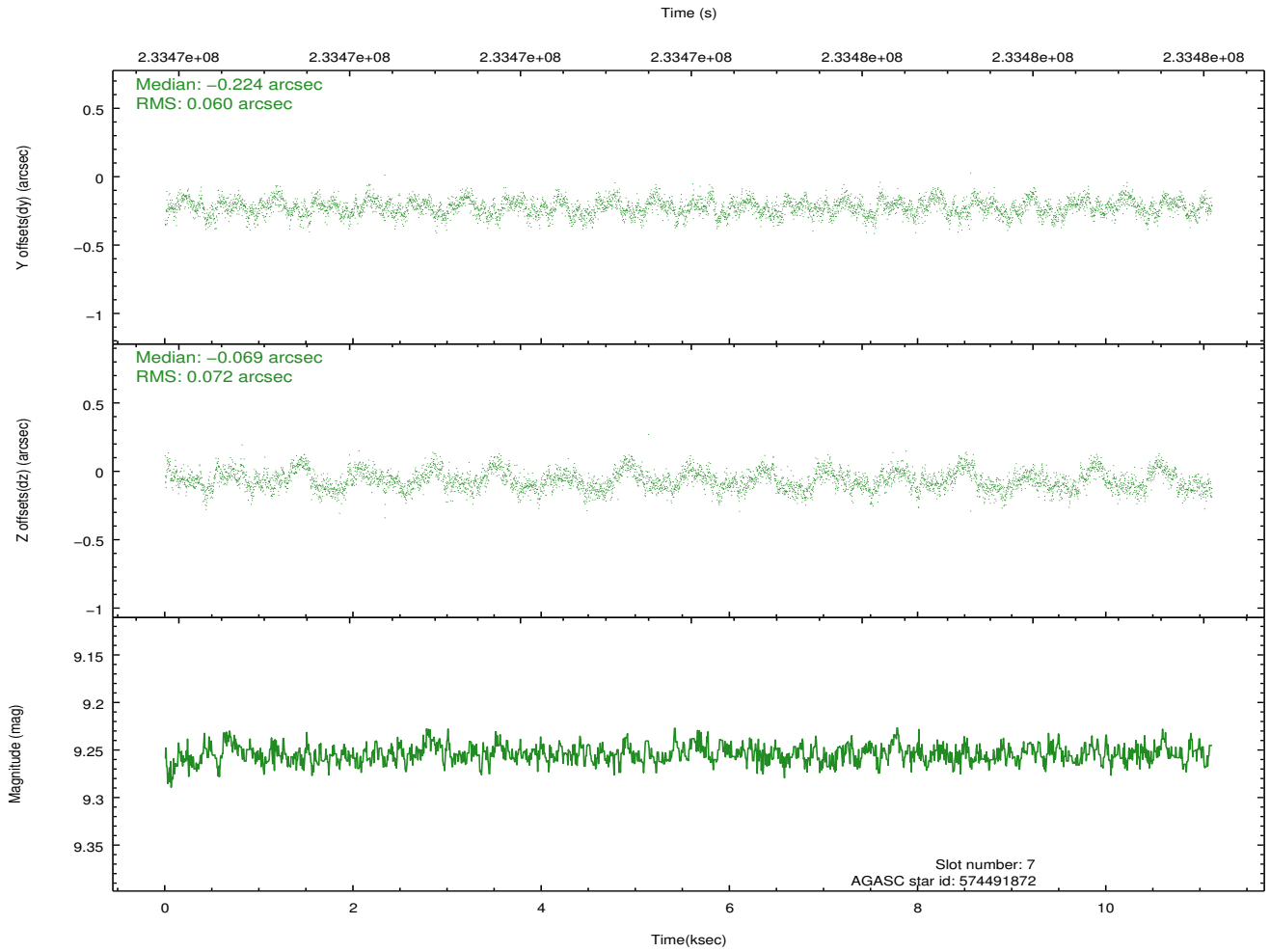
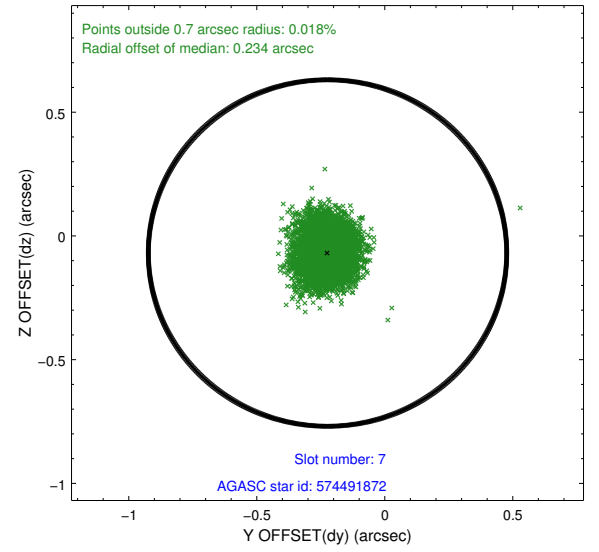
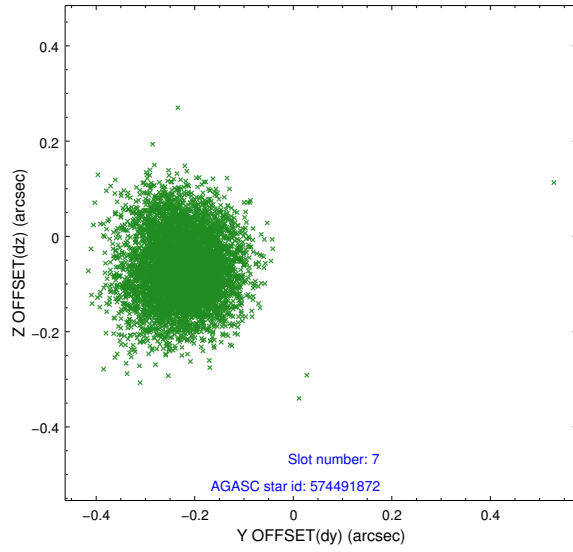
2.4.3 Slot 5



2.4.4 Slot 6

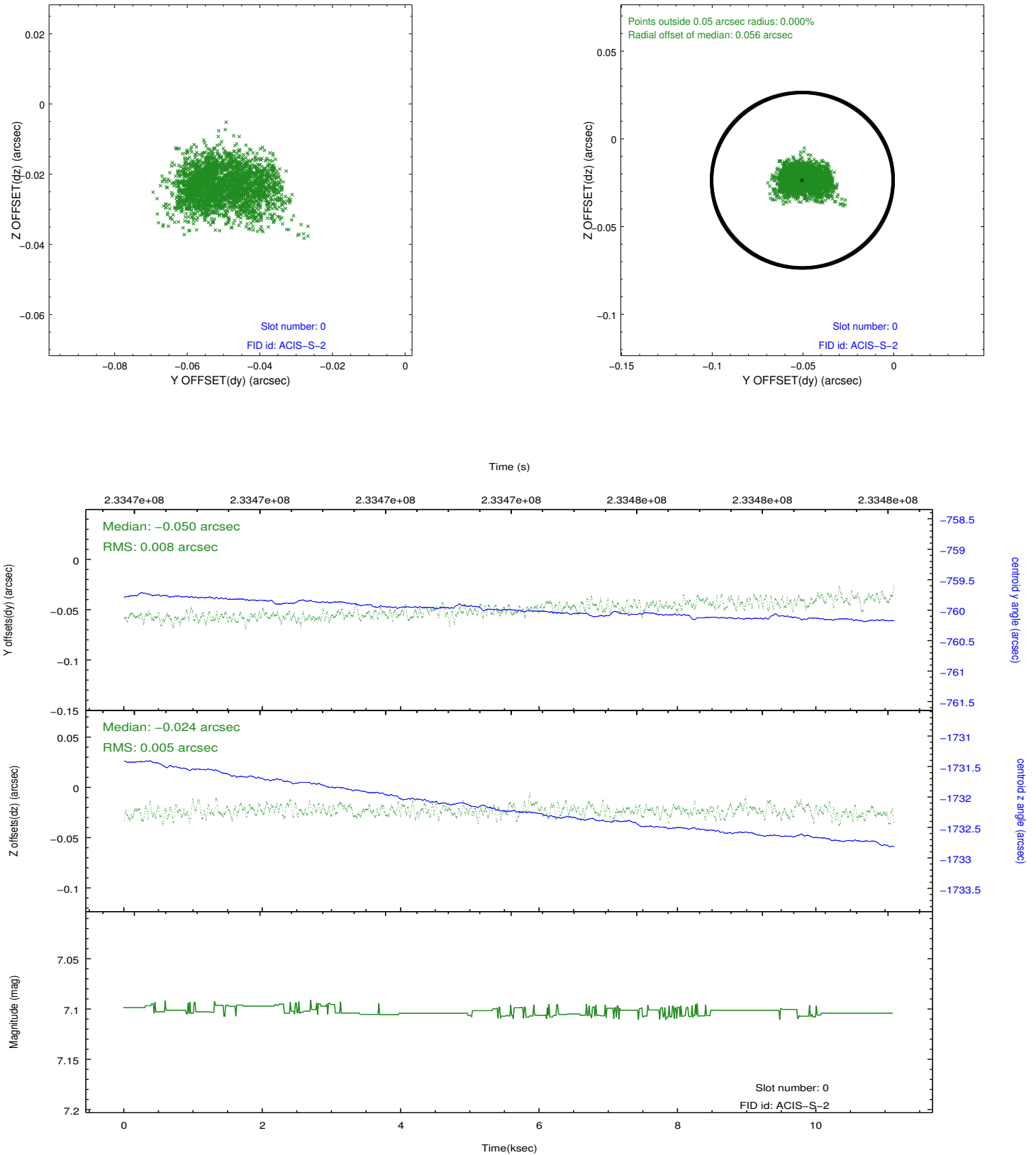


2.4.5 Slot 7

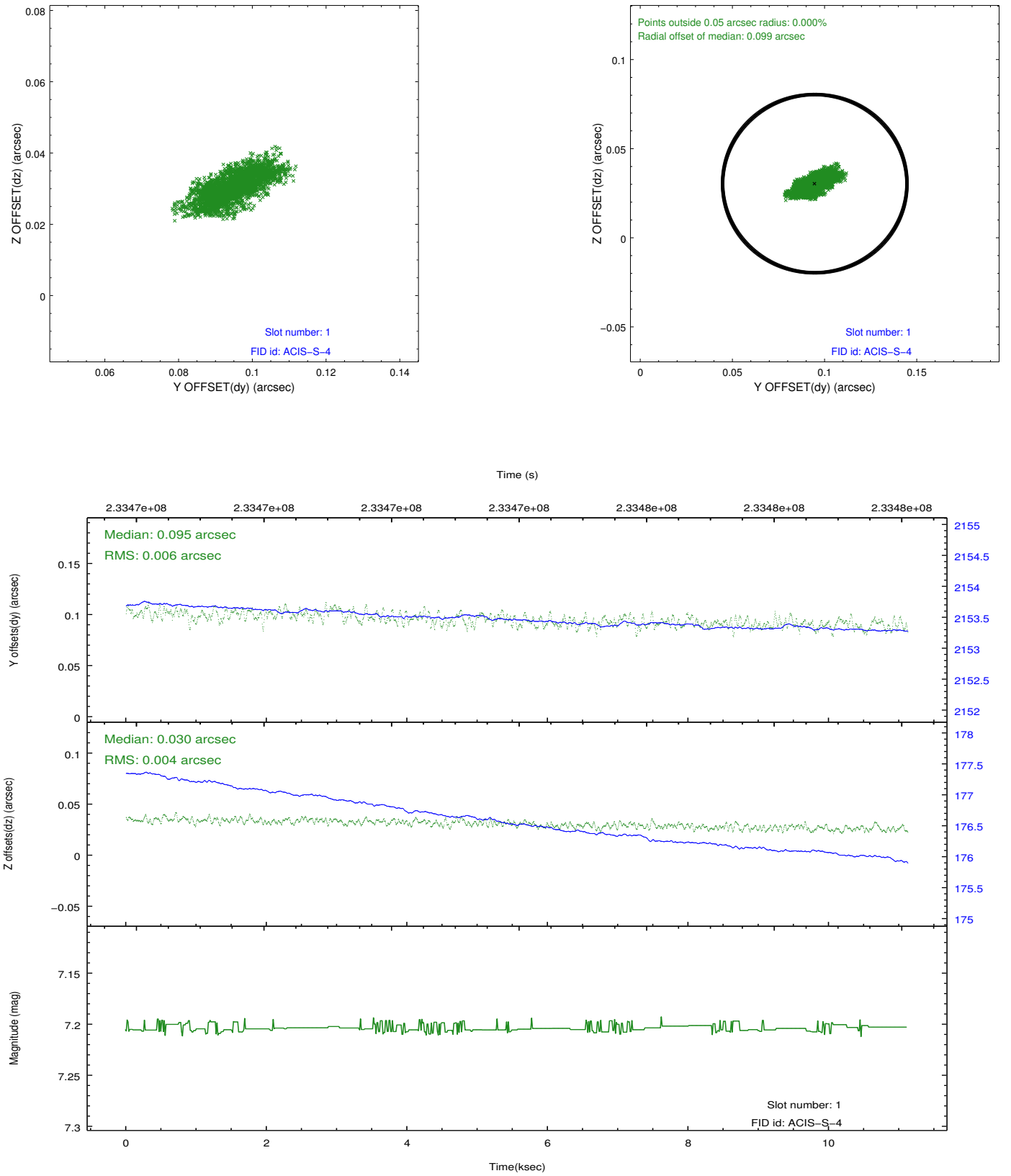


2.5 FID Slots

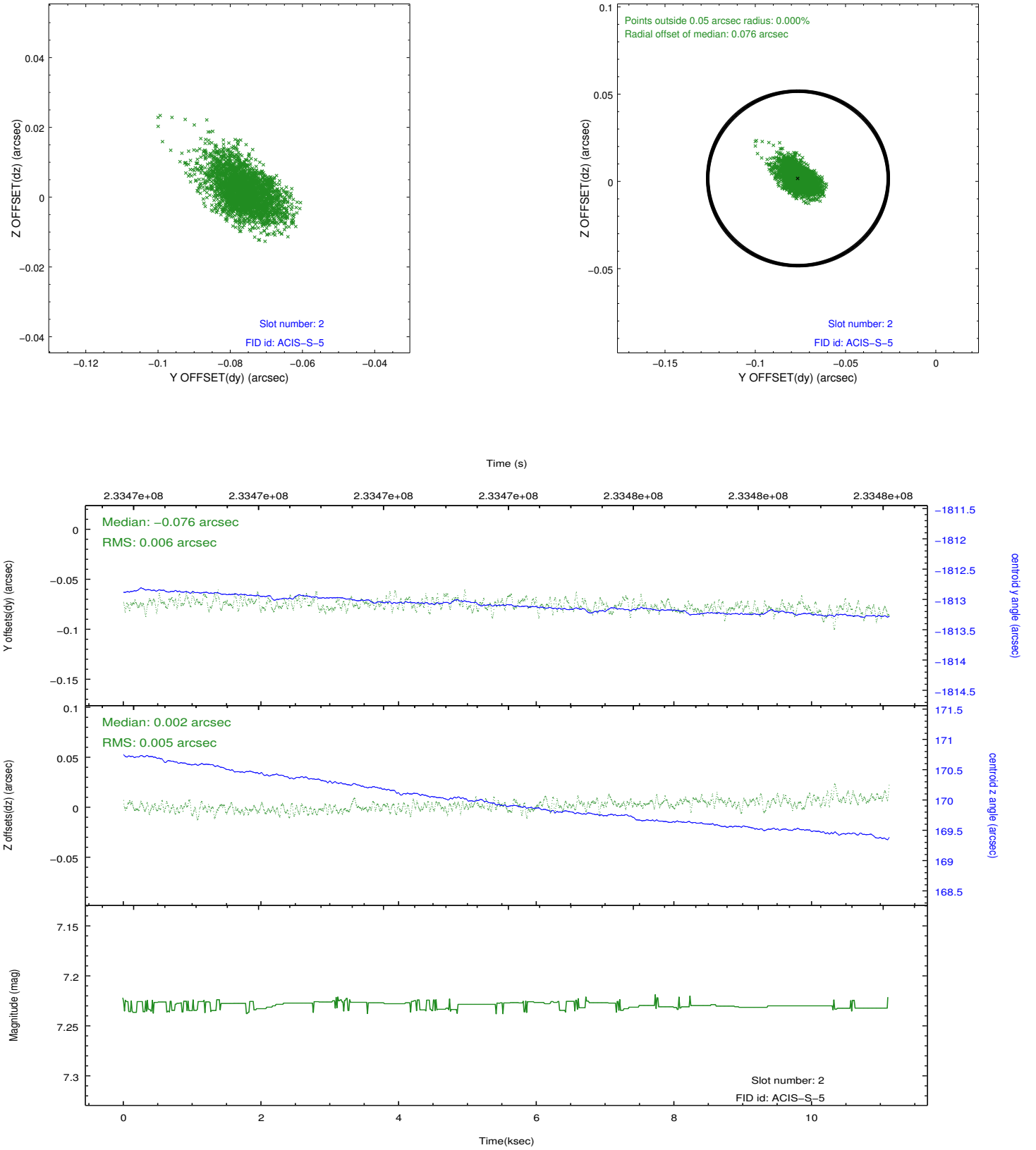
2.5.1 Slot 0



2.5.2 Slot 1



2.5.3 Slot 2



A Summary

A.1 Status

V&V Scientist	Jen Lauer
V&V Date (YYYY-MM-DD)	2013.01.16
V&V Edition	1
V&V Disposition and Status	OK
V&V Charge Time	11.11999

A.2 Comments

Roll preference not met.