

V&V Reference Report

L2 ASCDS Version : 7.6.9

Observation 4205 - L2 Version 001
Chandra X-Ray Center

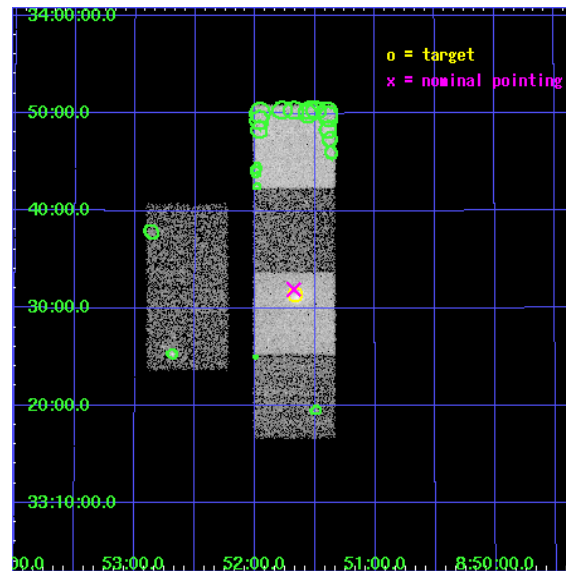
L2 Processing Date : Oct 15 2006

Contents

1	Front	2
2	OBI	3
2.1	OBI	3
2.1.1	Images	3
2.1.2	Bias	3
2.1.3	Parameters	4
2.1.4	Events	4
2.2	Compared Parameters	5
2.3	Aspect	6
2.4	Star Slots	9
2.4.1	Slot 3	9
2.4.2	Slot 4	10
2.4.3	Slot 5	11
2.4.4	Slot 6	12
2.4.5	Slot 7	13
2.5	FID Slots	14
2.5.1	Slot 0	14
2.5.2	Slot 1	15
2.5.3	Slot 2	16
3	Point Sources	17
A	Summary	18
A.1	Status	18
A.2	Comments	18

1 Front

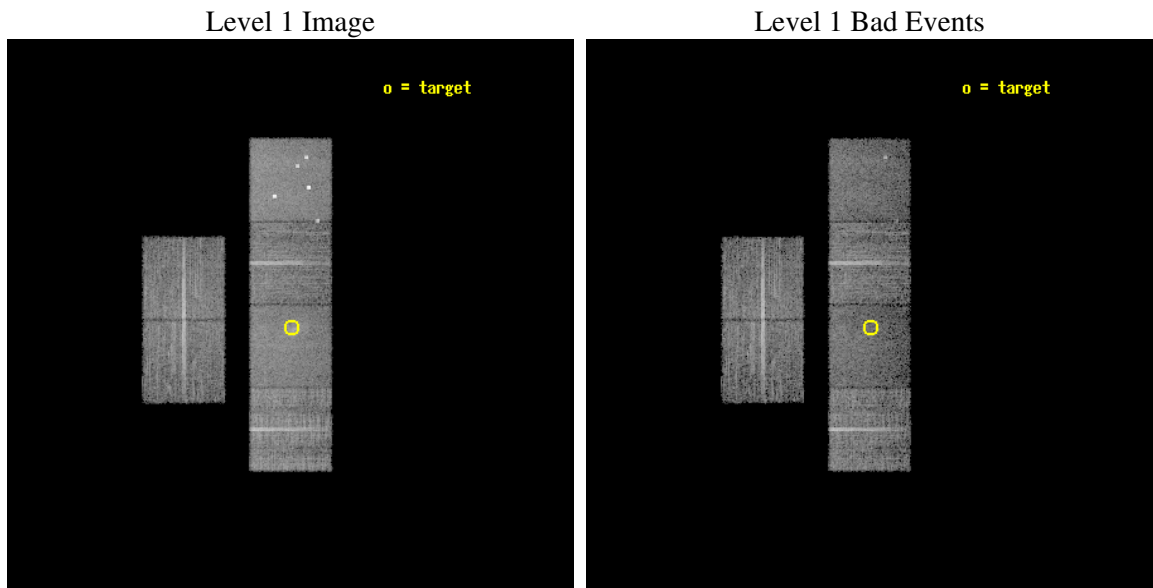
seq_num	800361
obs_id	4205
title	THE NATURE OF LOW SURFACE BRIGHTNESS X-RAY CLUSTERS OF GALAXIES
observer	Prof. David Buote
object	1492
dtcycle	0
cycle	P
ra_targ	132.917083
dec_targ	33.523139
ra_nom	132.91910549251
dec_nom	33.53262398928
roll_nom	89.969429279322
revision	2
ontime	11571.199956894
livetime	11424.6784557
ontime2	11571.199956894
ontime3	11571.199956894
ontime5	11571.199956894
ontime6	11571.199956894
ontime7	11571.199956894
ontime8	11571.199956894
l2events	83088



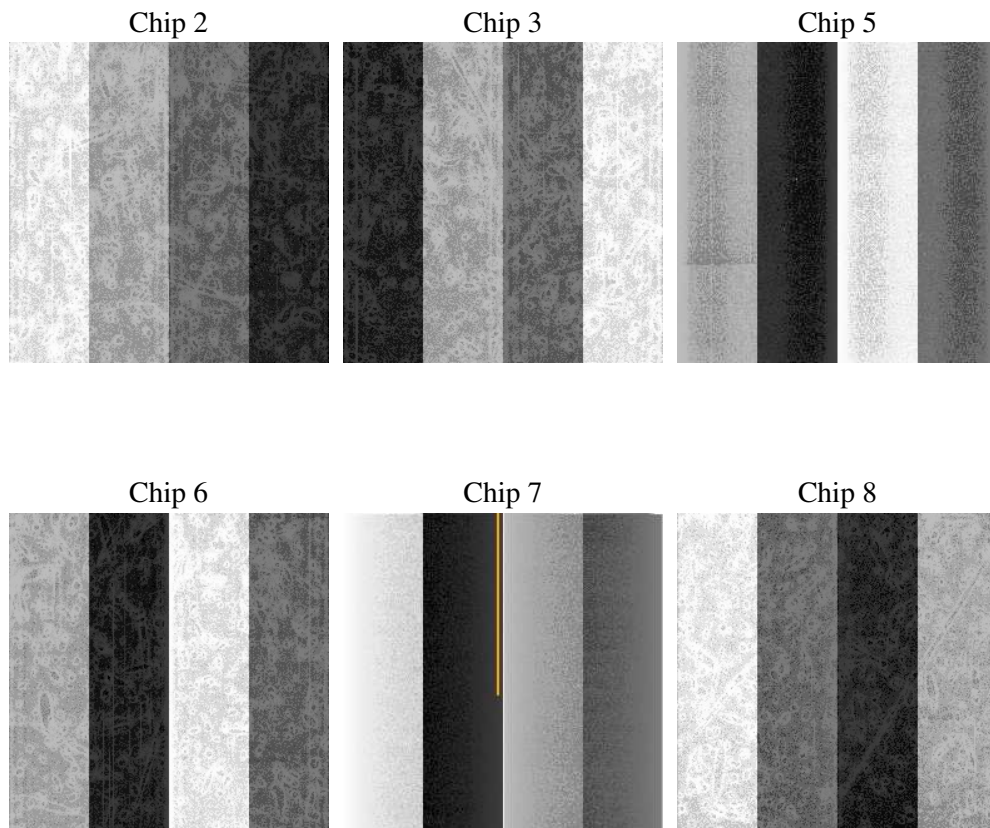
2 OBI

2.1 OBI

2.1.1 Images



2.1.2 Bias



2.1.3 Parameters

obi_num	0
ascdsver	7.6.9
caldbver	3.2.3
date	2006-10-15T03:14:56
revision	2

sched_exp_time	11611.000000
ontime	11576.884353161
ontime2	11576.884353161
ontime3	11576.884353161
ontime5	11576.884353161
ontime6	11576.884353161
ontime7	11576.884353161
ontime8	11576.884353161
l1events	403697

2.1.4 Events

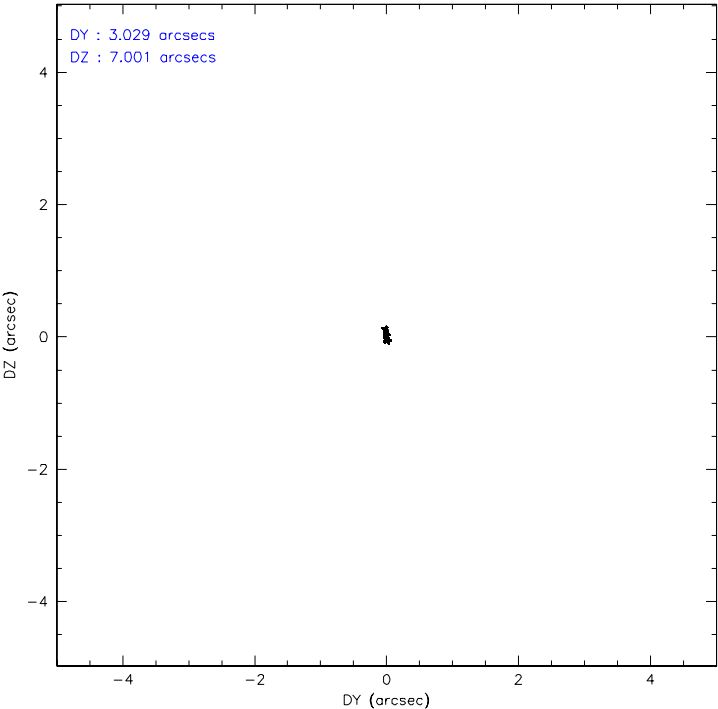
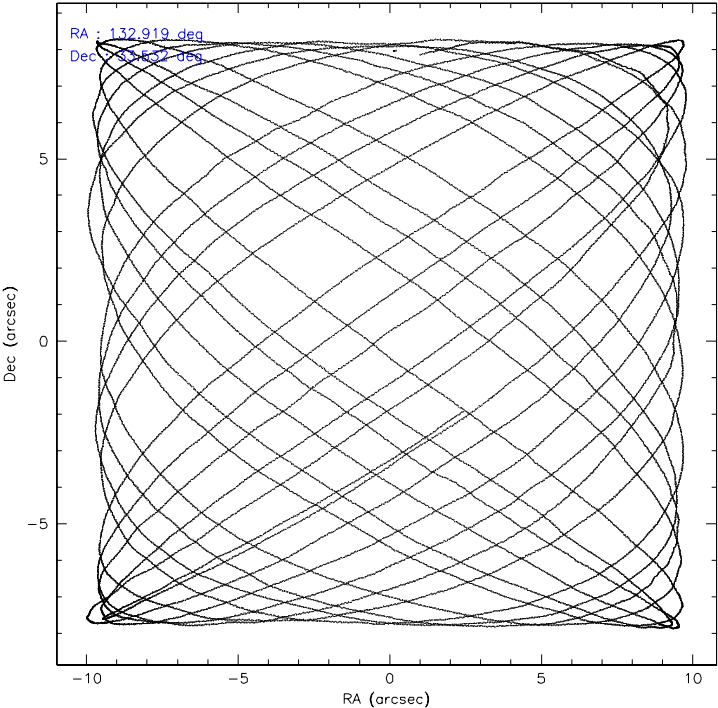
	ccd 2	ccd 3	ccd 5	ccd 6	ccd 7	ccd 8
level 1 events	62141	57534	82360	59541	65840	76281
rejected events	56384	51909	40326	53363	37343	57397
rejected %	90%	90%	48%	89%	56%	75%

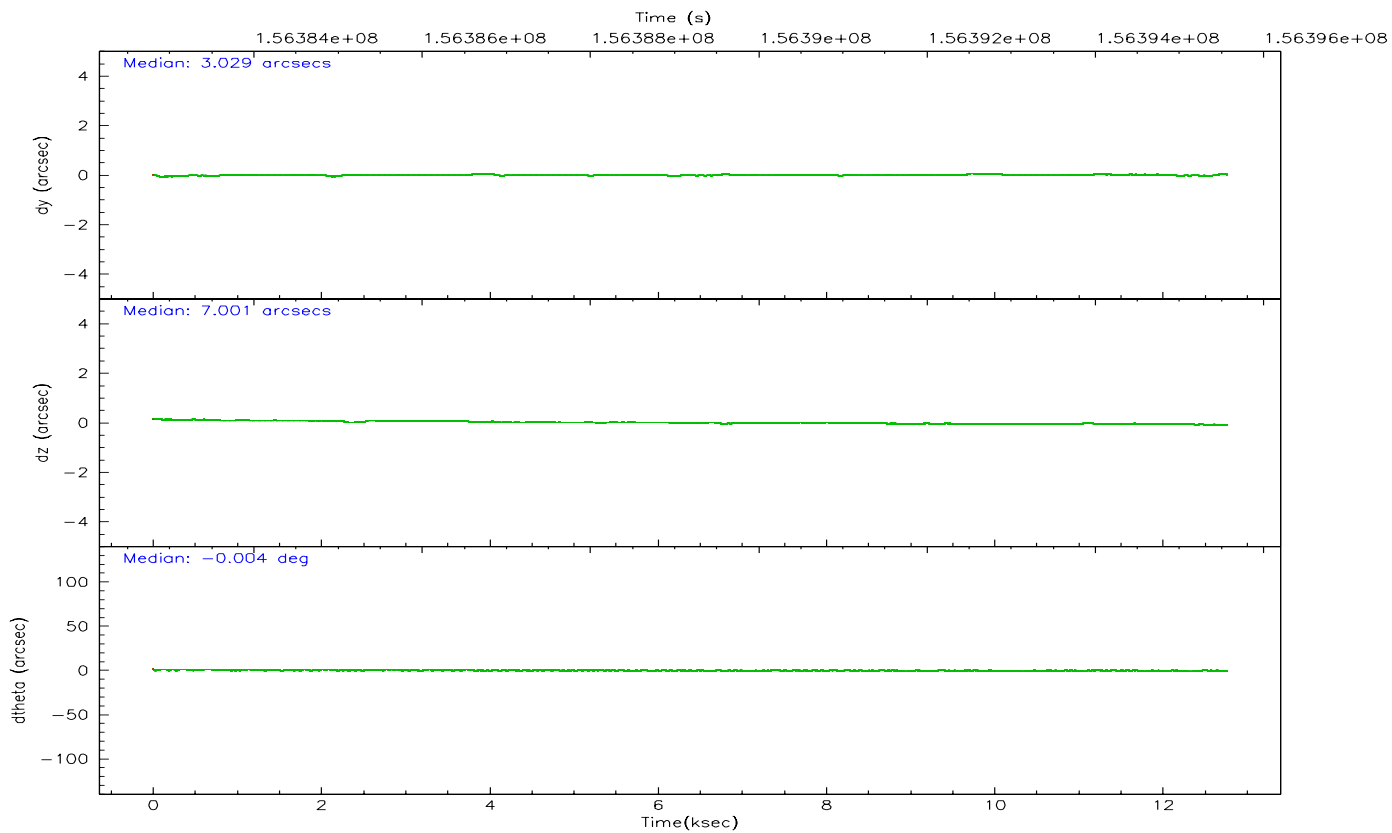
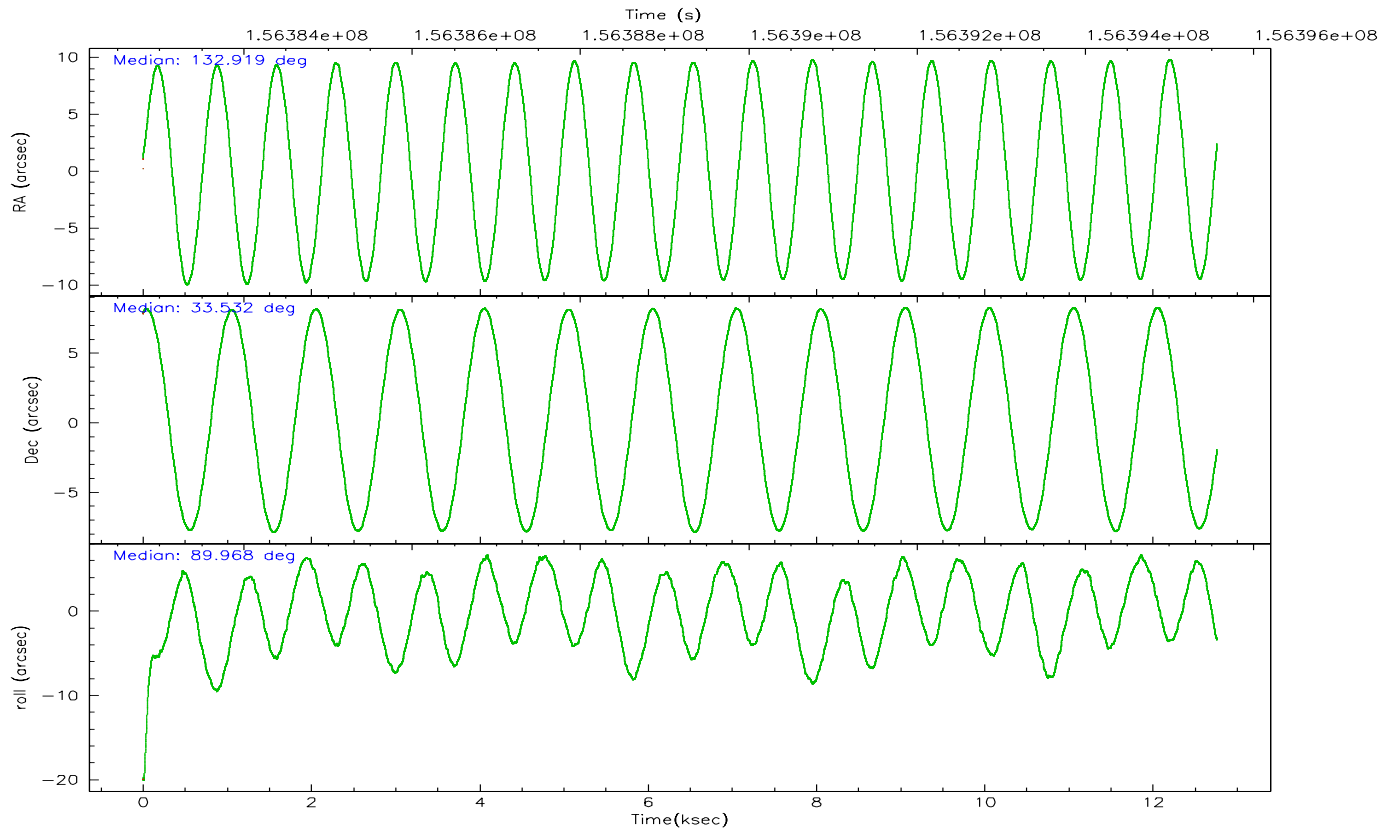
	ccd 2	ccd 3	ccd 5	ccd 6	ccd 7	ccd 8
grade 0 events	1959	2063	7894	2273	2162	5755
	3%	3%	9%	3%	3%	7%
grade 1 events	19	21	106	25	26	48
	0%	0%	0%	0%	0%	0%
grade 2 events	1321	1172	11552	1281	6996	3742
	2%	2%	14%	2%	10%	4%
grade 3 events	649	699	947	678	1782	2389
	1%	1%	1%	1%	2%	3%
grade 4 events	662	640	983	704	1743	2142
	1%	1%	1%	1%	2%	2%
grade 5 events	1897	2140	4142	2235	4805	3325
	3%	3%	5%	3%	7%	4%
grade 6 events	1166	1052	20671	1243	15826	4868
	1%	1%	25%	2%	24%	6%
grade 7 events	54468	49747	36065	51102	32500	54012
	87%	86%	43%	85%	49%	70%

2.2 Compared Parameters

Parameter	Planned	Actual	Parameter	Planned	Actual
Instrument	ACIS	ACIS	Obspar format version number	6	6
Detector	ACIS-235678	ACIS-235678	Obspar file type	PREDICTED	ACTUAL
Grating	NONE	NONE	Obspar update status	NONE	UPDATED
Data mode	VFAINT	VFAINT	Number of optional ACIS chips dropped	0	0
Observation mode	POINTING	POINTING	On-chip summing requested	N	N
Pointing RA	132.935819	132.919105492511	Subarray requested	NONE	NONE
Pointing Dec	33.509254	33.53262398927976	Alternating exposures requested	N	N
Pointing Roll	89.803576	89.96942927932184	Primary exposure time	0.000000	3.2
SIM focus pos (mm)	-0.684267	-0.6828225247311905			
SIM defocus (mm)	0	0.001444936568705701			
SIM translation stage pos (mm)	-190.132523	-190.1425803651734			
SIM translation stage offset (mm)	0	0.01005778216563158			
Observation start time	156383951.184000	156382506.58449			
Observation start date	2002-12-15T23:58:07	2002-12-15T23:35:06			
Observation end time	156395562.184000	156395850.54754			
Observation end date	2002-12-16T03:11:38	2002-12-16T03:17:30			
Read mode	TIMED	TIMED			

2.3 Aspect



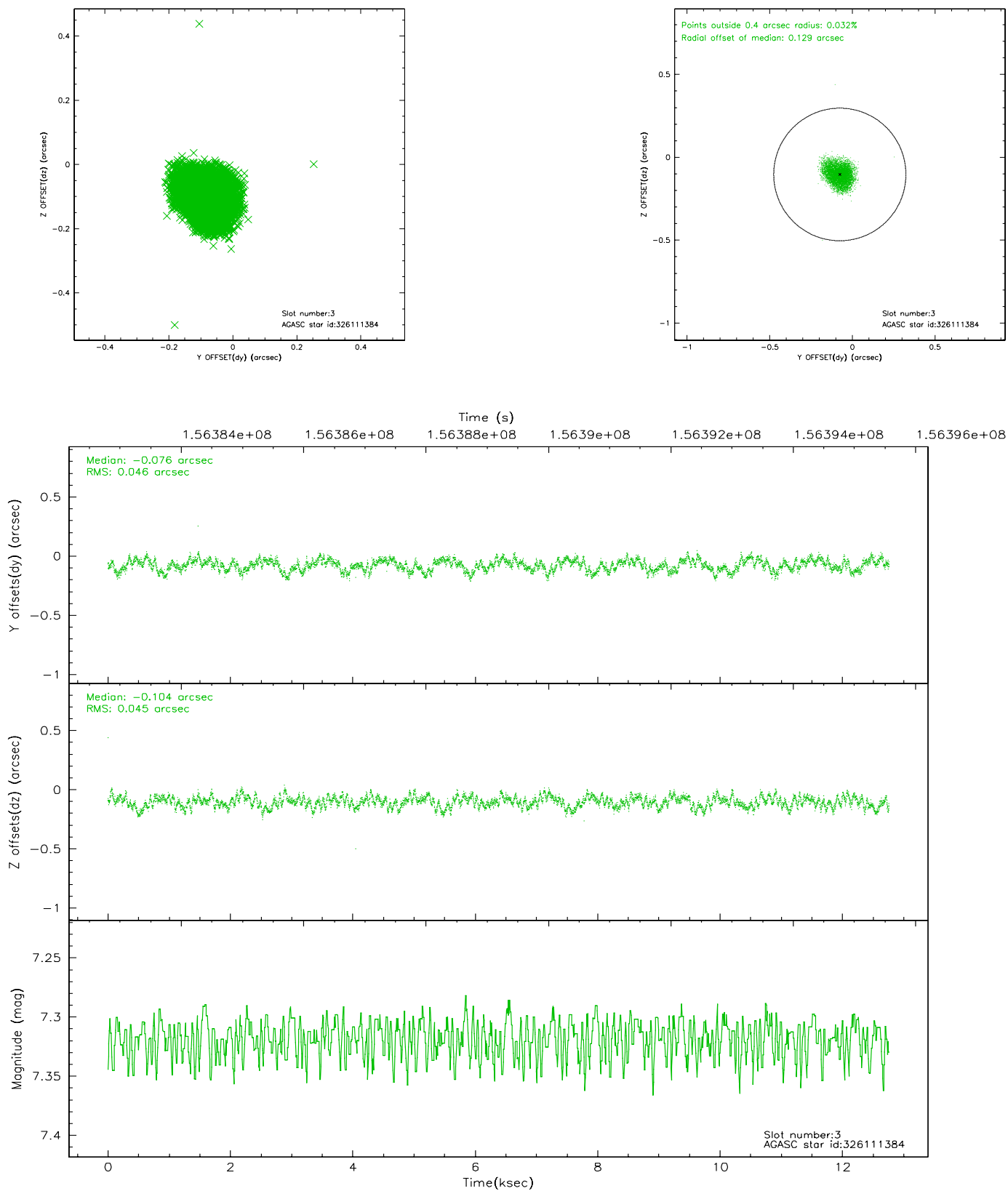


Slot Statistics

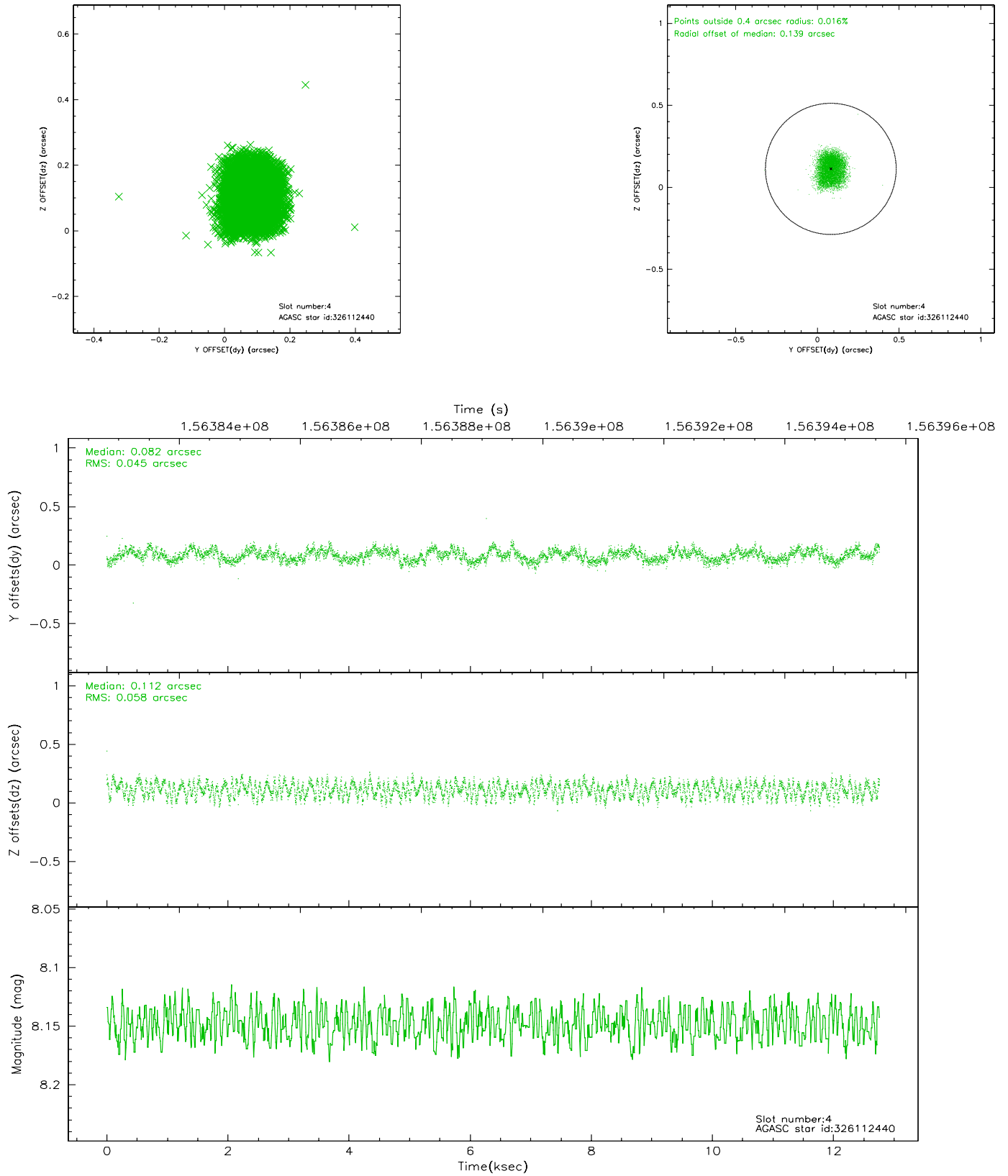
slot	status	id	mag	n_pts	med_dy	med_dz	dr1	dr2	ra	dec	mean_y	mean_z
0	FID	ACIS-S-2	7.12	3114	-0.013	0.020	0.006	0.011	0.000000	0.000000	-755.68	-1728.11
1	FID	ACIS-S-4	7.20	3114	-0.036	0.001	0.005	0.009	0.000000	0.000000	2157.40	179.97
2	FID	ACIS-S-5	7.24	3114	0.018	-0.012	0.006	0.010	0.000000	0.000000	-1808.01	174.05
3	GUIDE	326111384	7.32	6226	-0.076	-0.104	0.070	0.107	132.467098	33.720034	757.48	1406.04
4	GUIDE	326112440	8.15	6227	0.082	0.112	0.080	0.119	133.461686	33.056810	-1618.76	-1591.77
5	GUIDE	326119712	8.94	6225	0.146	-0.029	0.120	0.179	132.831789	33.224884	-1024.32	309.42
6	GUIDE	326119984	9.41	6216	-0.061	0.147	0.088	0.142	133.071124	34.102725	2138.37	-395.80
7	GUIDE	326115136	8.91	6221	-0.086	-0.123	0.071	0.116	132.826117	34.154560	2322.78	334.73

2.4 Star Slots

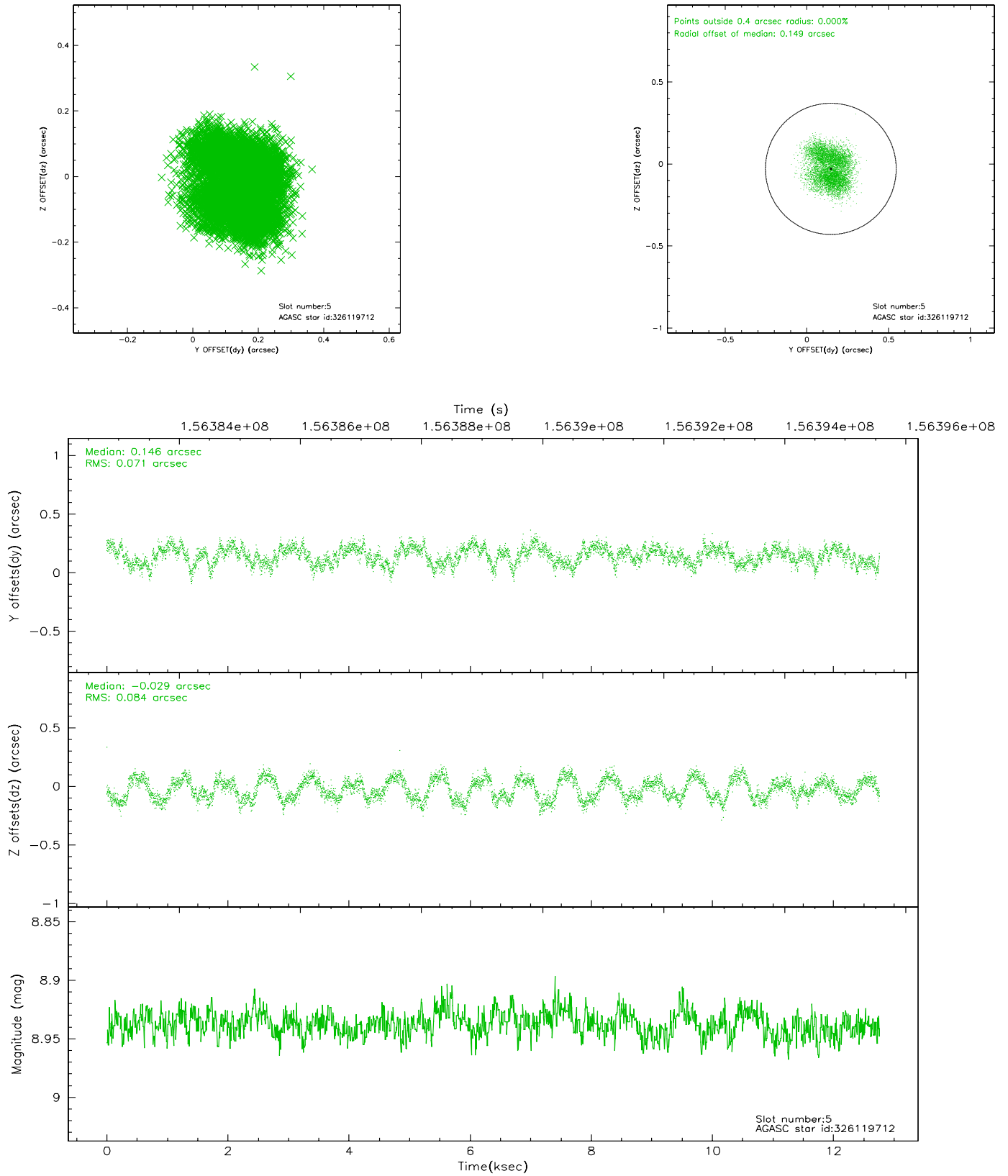
2.4.1 Slot 3



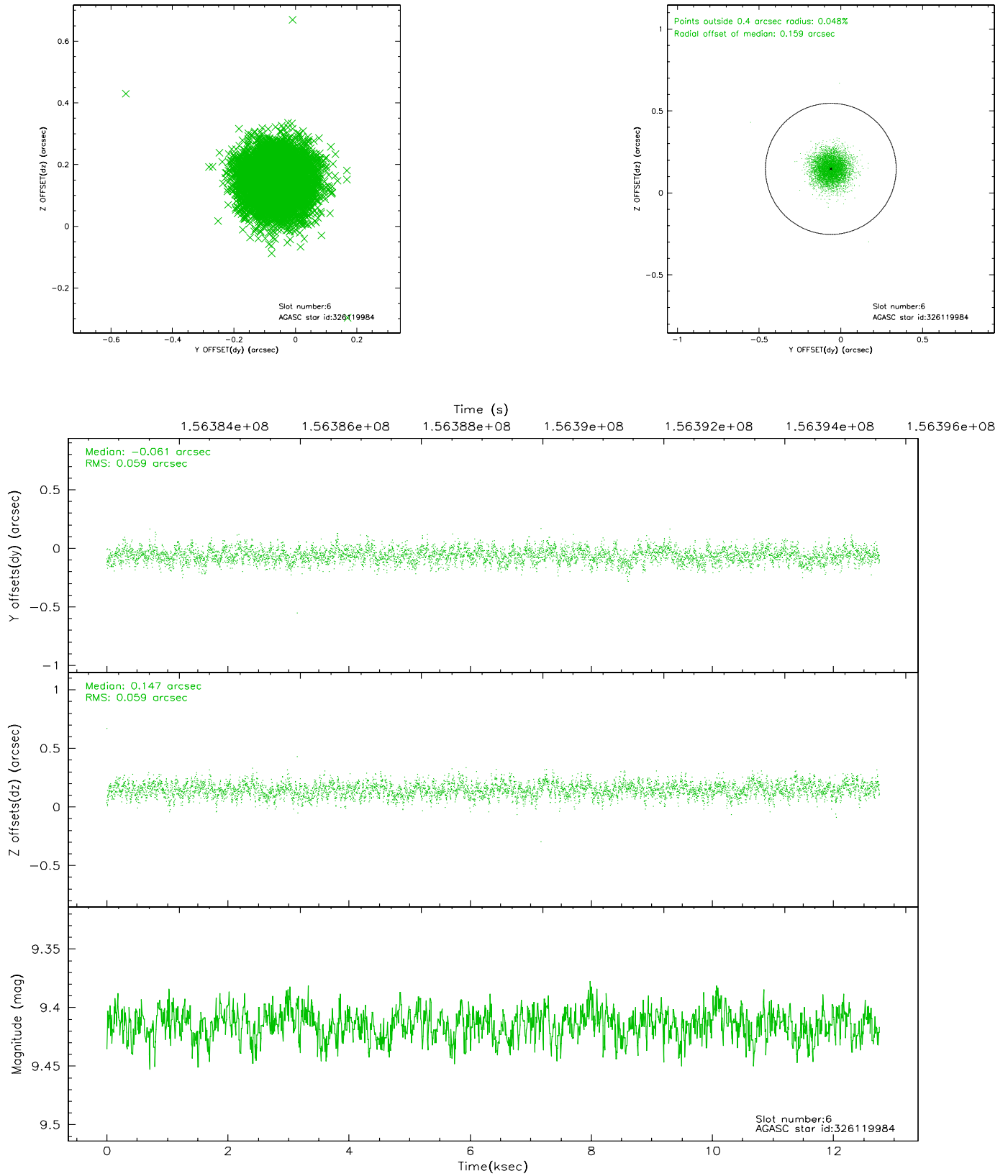
2.4.2 Slot 4



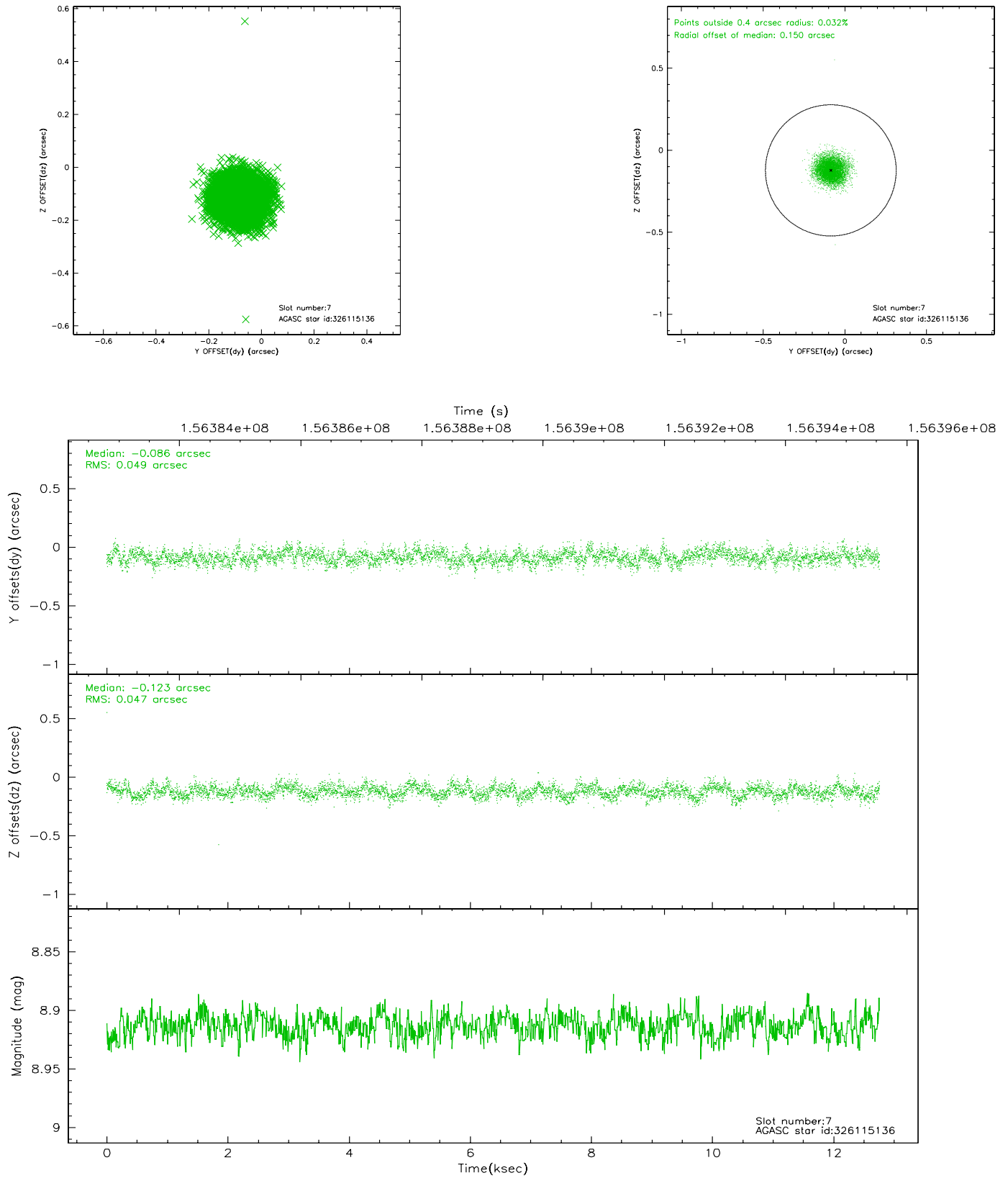
2.4.3 Slot 5



2.4.4 Slot 6

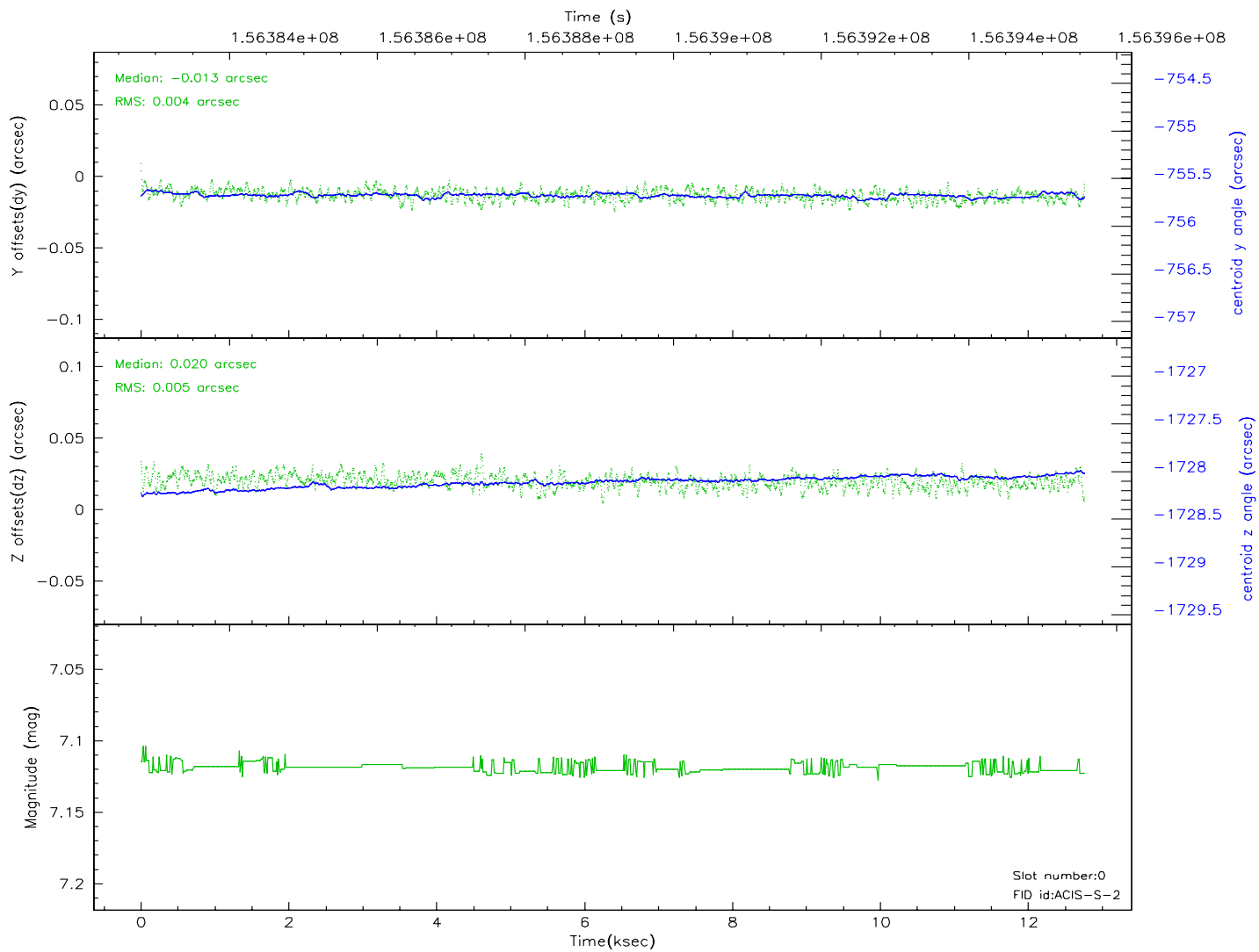
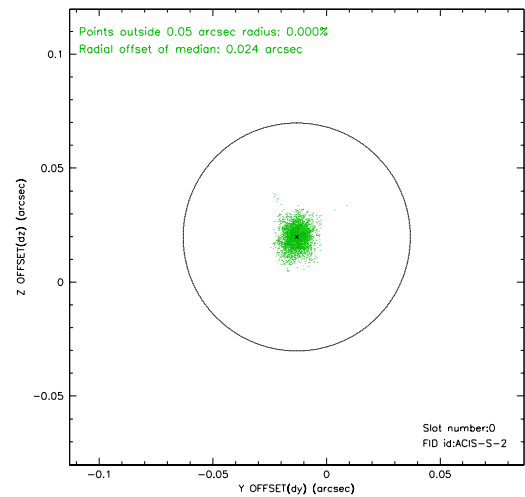
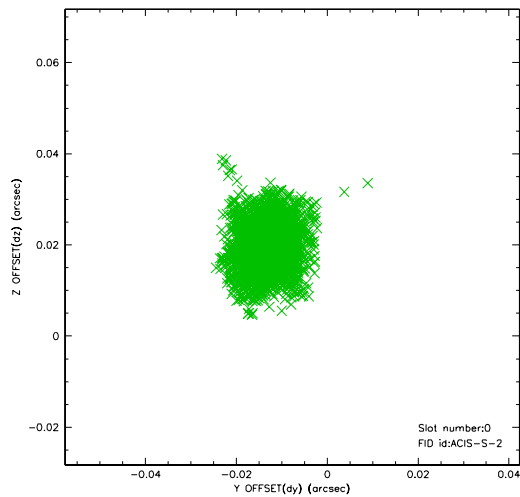


2.4.5 Slot 7

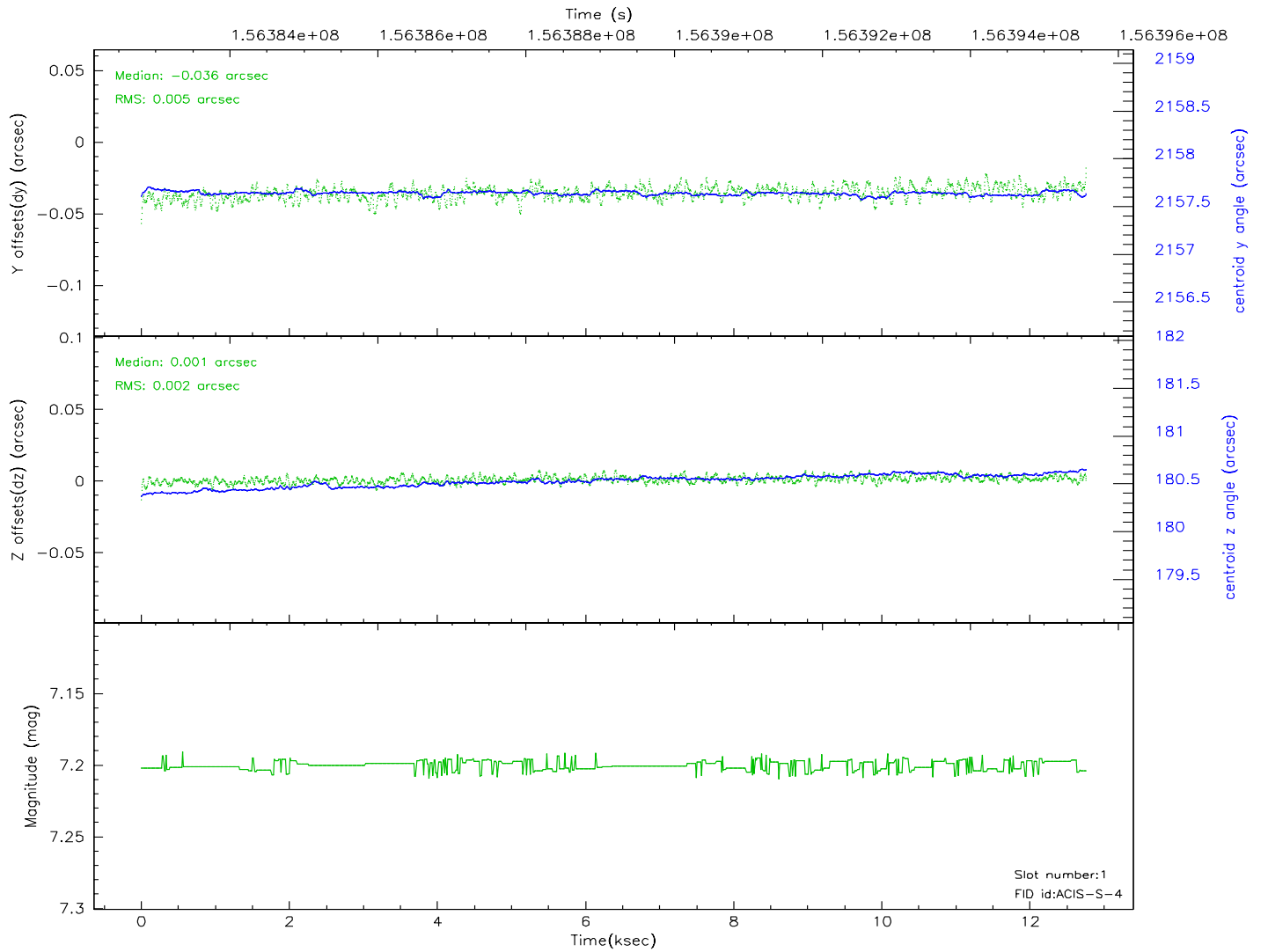
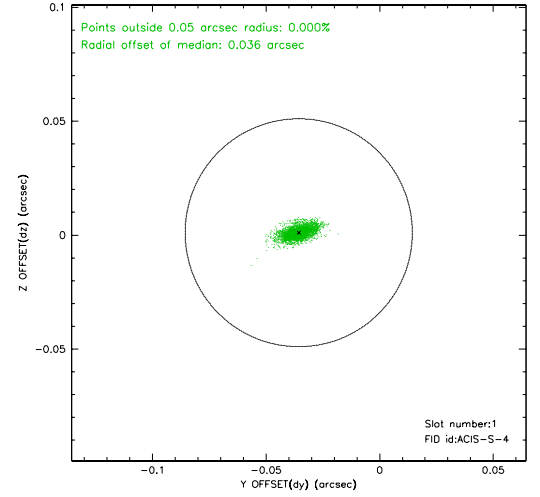
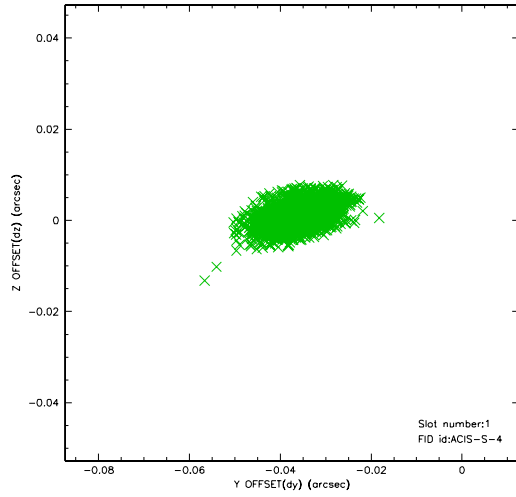


2.5 FID Slots

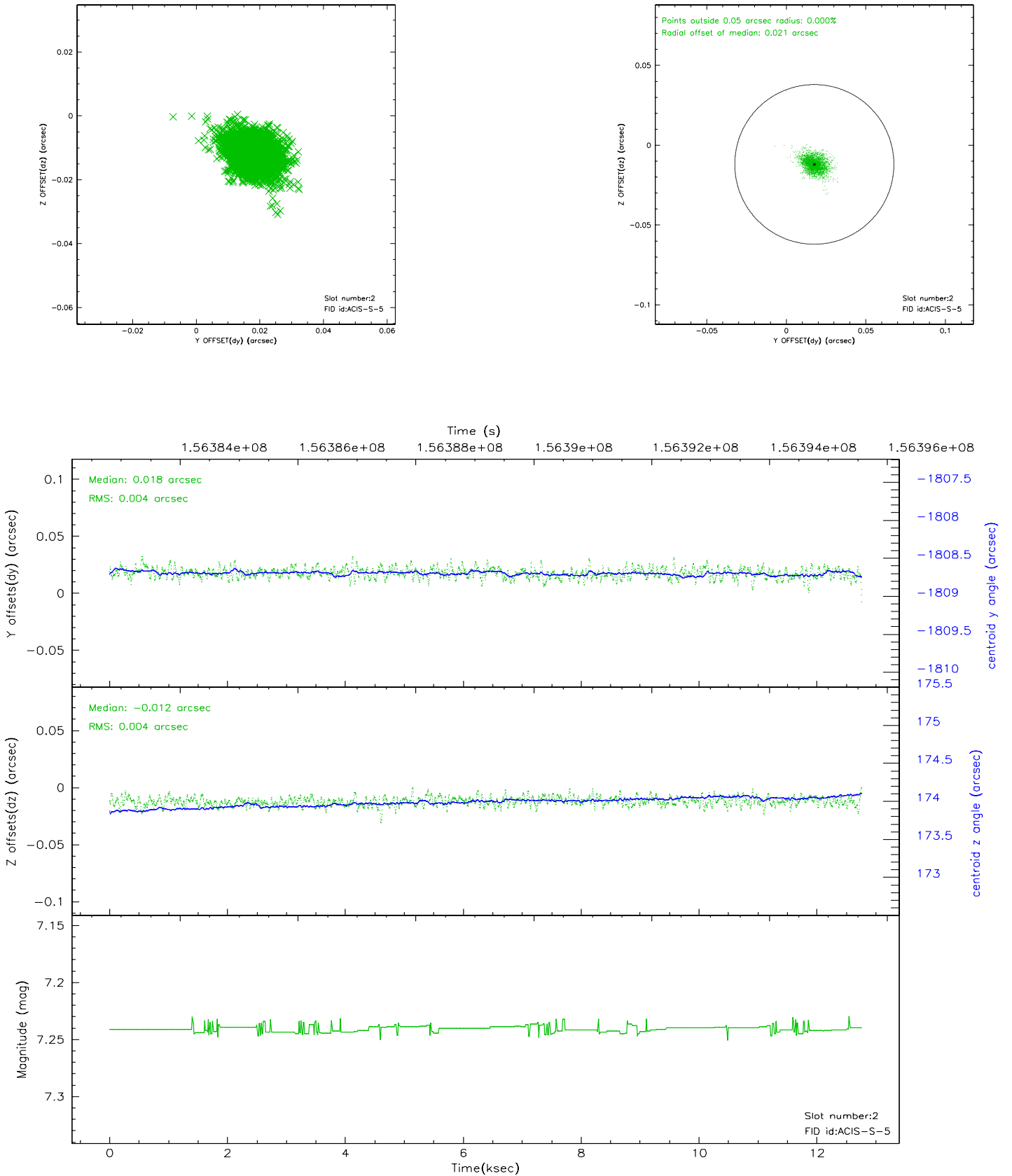
2.5.1 Slot 0



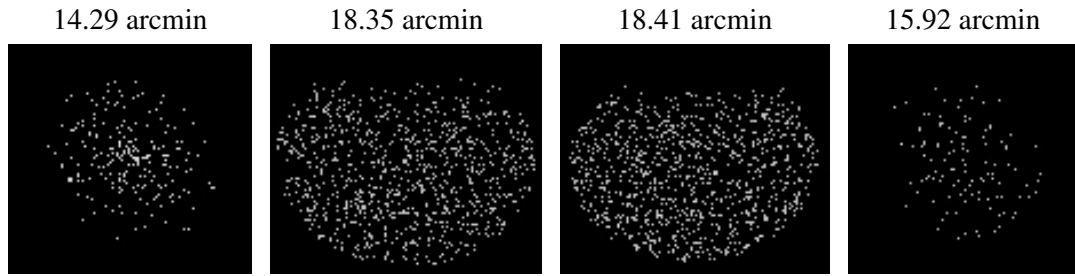
2.5.2 Slot 1



2.5.3 Slot 2



3 Point Sources



A Summary

A.1 Status

V&V Scientist	Jen Lauer
V&V Date (YYYY-MM-DD)	2006.10.16
V&V Edition	1
V&V Disposition and Status	OK
V&V Charge Time	11.571

A.2 Comments