

V&V Reference Report

L2 ASCDS Version : 7.6.9

Observation 2925 - L2 Version 001
Chandra X-Ray Center

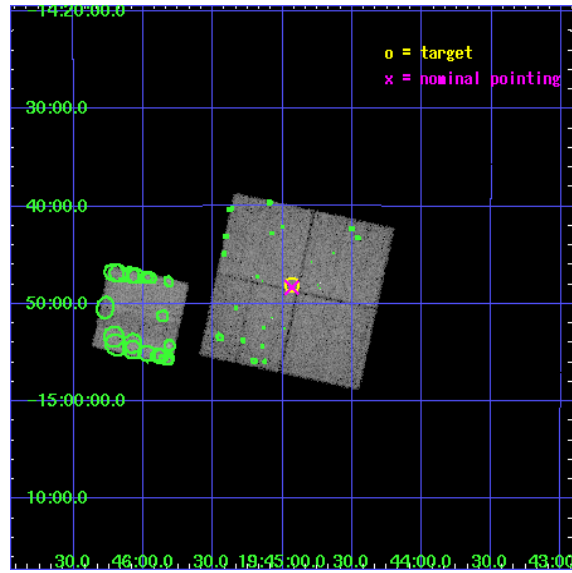
L2 Processing Date : Oct 11 2006

Contents

1	Front	2
2	OBI	3
2.1	OBI	3
2.1.1	Images	3
2.1.2	Bias	3
2.1.3	Parameters	4
2.1.4	Events	4
2.2	Compared Parameters	5
2.3	Aspect	6
2.4	Star Slots	9
2.4.1	Slot 3	9
2.4.2	Slot 4	10
2.4.3	Slot 5	11
2.4.4	Slot 6	12
2.4.5	Slot 7	13
2.5	FID Slots	14
2.5.1	Slot 0	14
2.5.2	Slot 1	15
2.5.3	Slot 2	16
3	Point Sources	17
A	Summary	18
A.1	Status	18
A.2	Comments	18

1 Front

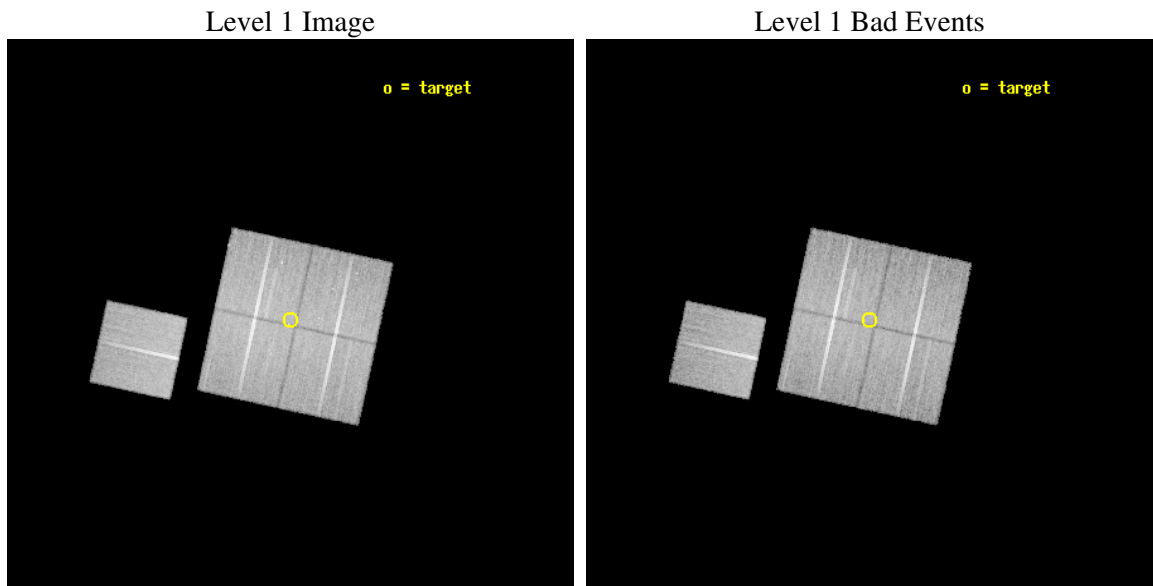
seq_num	600262
obs_id	2925
title	POPULATION STUDIES OF DWARF GALAXIES
observer	Allyn Tennant
object	NGC 6822
dtcycle	0
cycle	P
ra_targ	296.234167
dec_targ	-14.801111
ra_nom	296.23327026998
dec_nom	-14.805686901607
roll_nom	282.29449739426
revision	2
ontime	28485.899945229
livetime	28113.71069143
ontime0	28482.758955121
ontime1	28485.899945229
ontime2	28479.617994845
ontime3	28485.899945229
ontime6	28482.758955061
l2events	126616



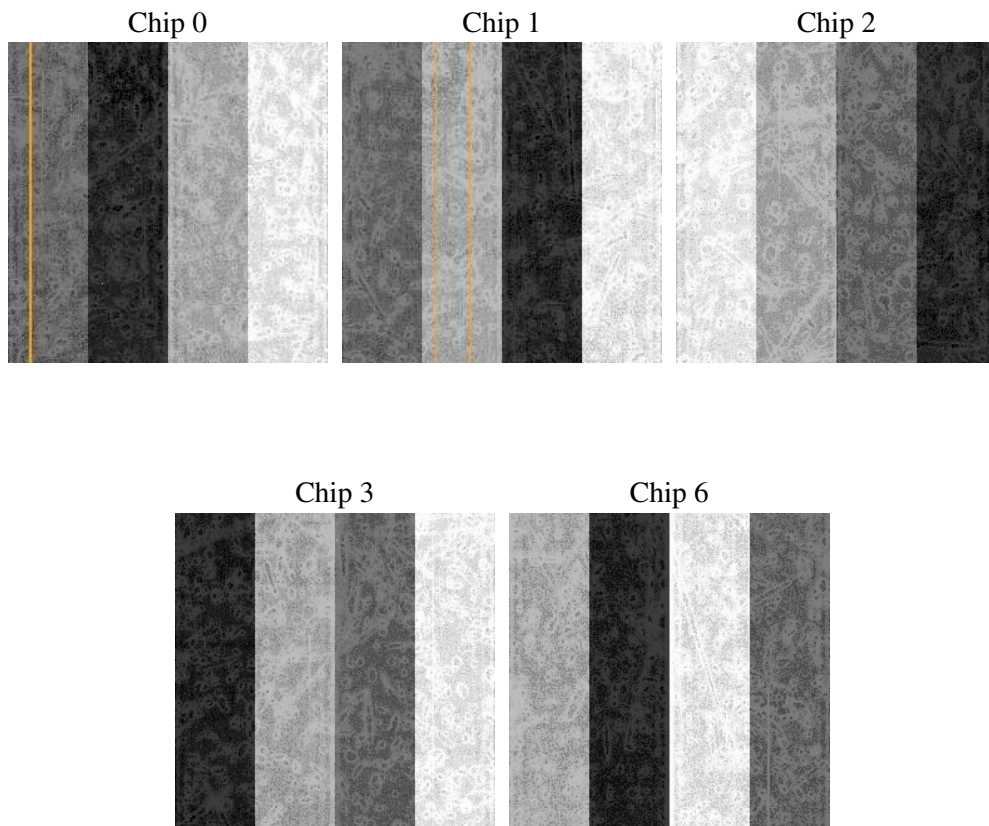
2 OBI

2.1 OBI

2.1.1 Images



2.1.2 Bias



2.1.3 Parameters

obi_num	0
ascdsver	7.6.9
caldbver	3.2.3
date	2006-10-12T01:14:53
revision	2

sched_exp_time	28369.363000
ontime	28492.02050516
ontime0	28488.879515052
ontime1	28492.020485222
ontime2	28485.738554776
ontime3	28492.02050516
ontime6	28488.879495054
l1events	893107

2.1.4 Events

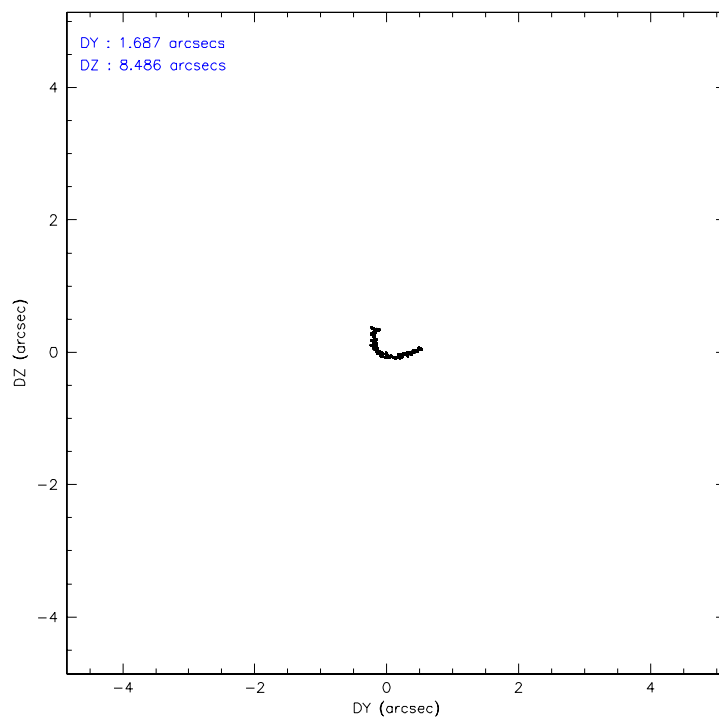
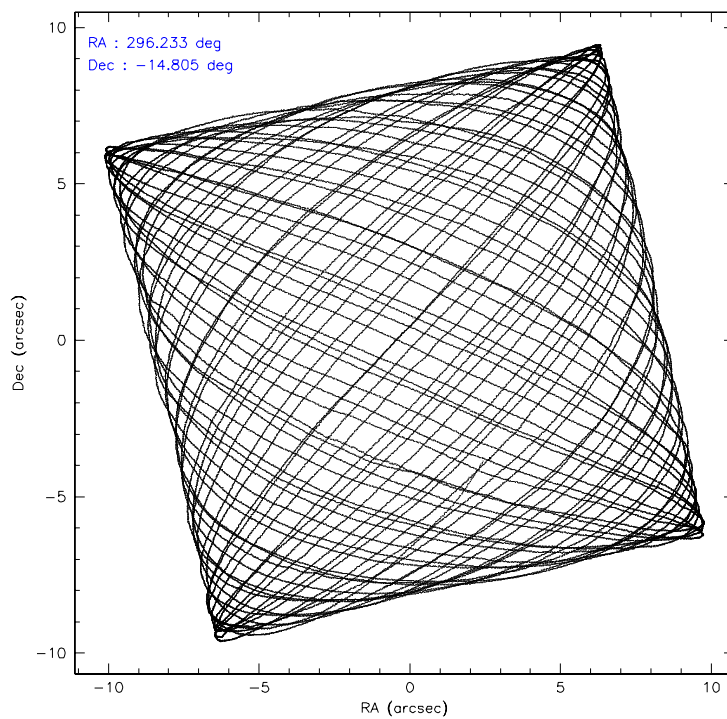
	ccd 0	ccd 1	ccd 2	ccd 3	ccd 6
level 1 events	169216	170102	183589	184344	185856
rejected events	142070	140851	156522	156638	153526
rejected %	83%	82%	85%	84%	82%

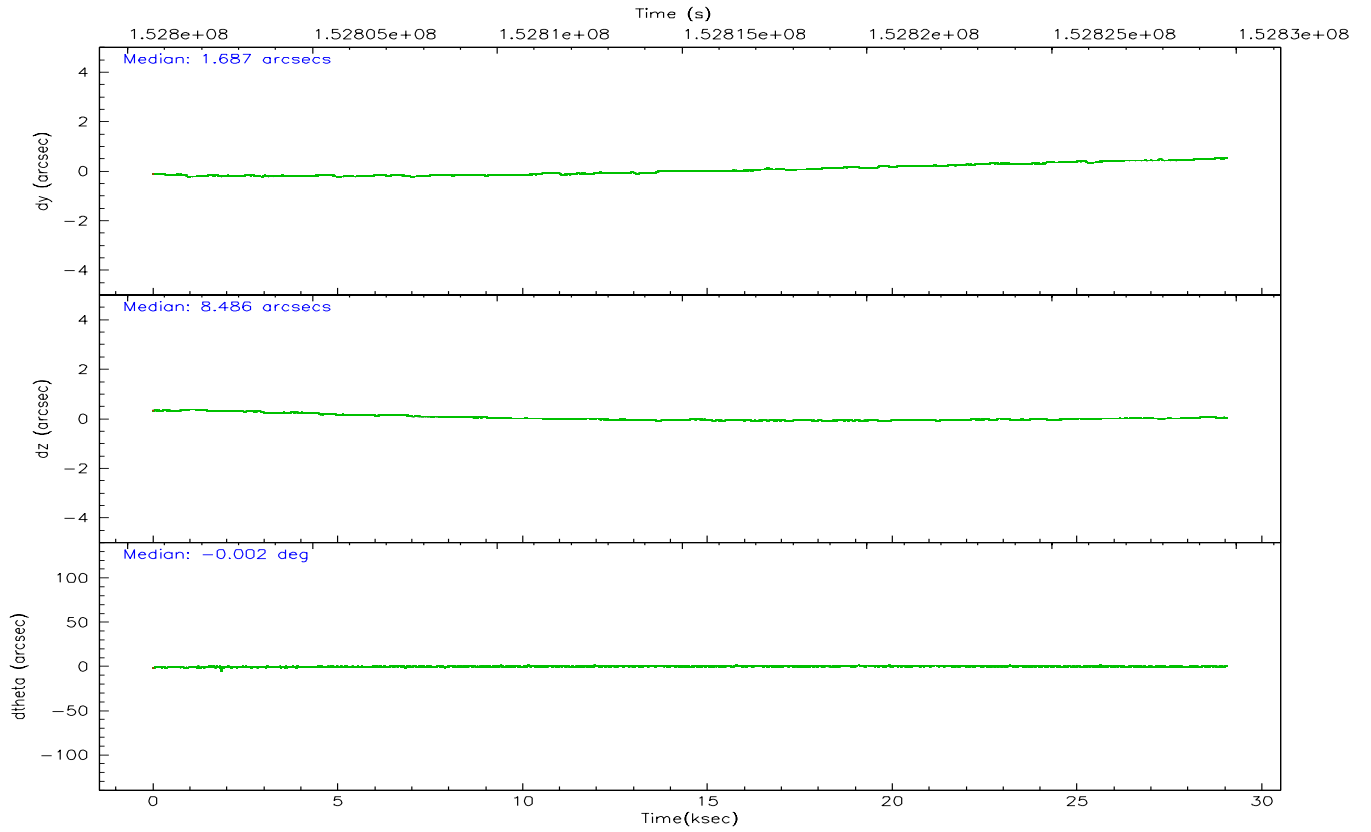
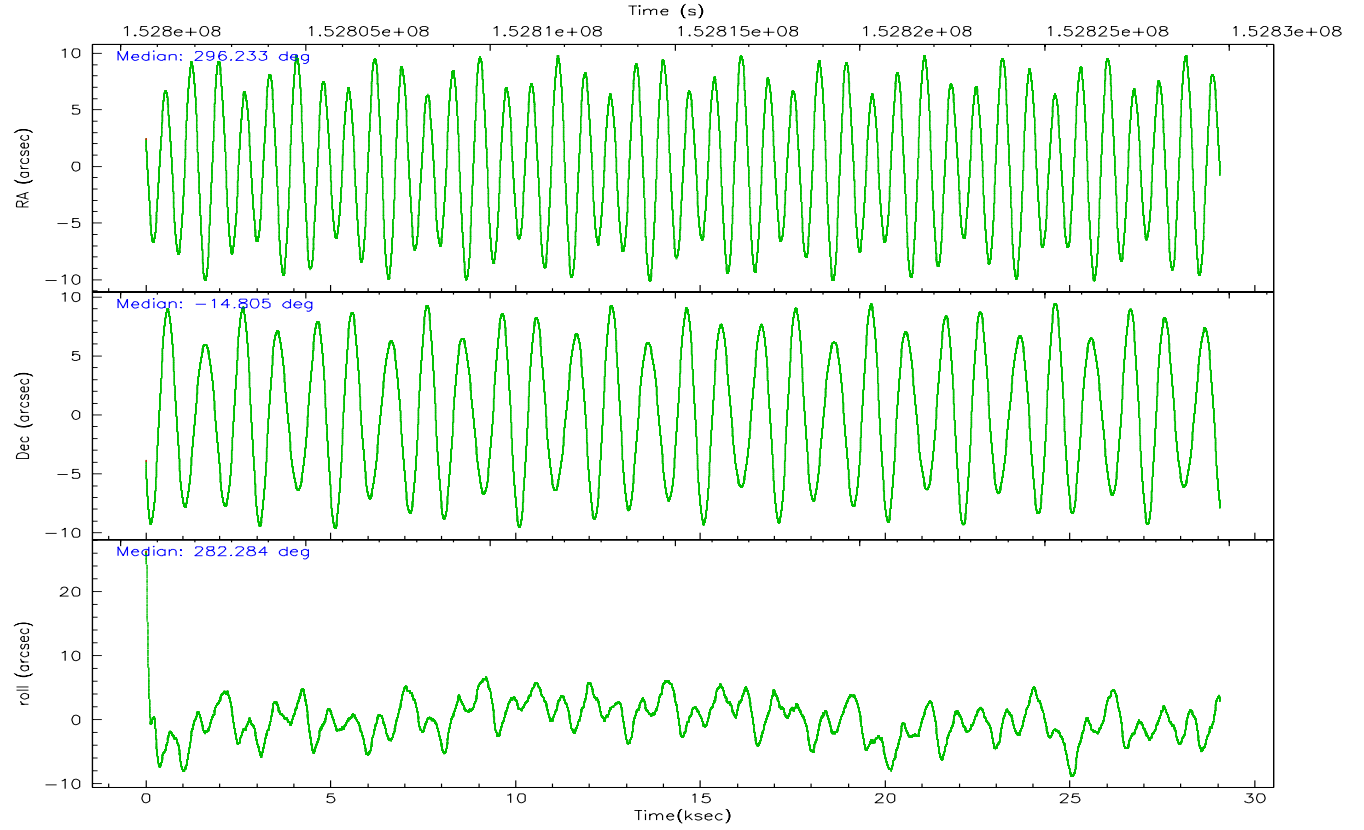
	ccd 0	ccd 1	ccd 2	ccd 3	ccd 6
grade 0 events	13401	13792	14253	14327	17580
	7%	8%	7%	7%	9%
grade 1 events	110	79	129	112	116
	0%	0%	0%	0%	0%
grade 2 events	5462	6391	5165	5138	6112
	3%	3%	2%	2%	3%
grade 3 events	2248	2276	2058	2139	2202
	1%	1%	1%	1%	1%
grade 4 events	2060	2250	2005	2145	2073
	1%	1%	1%	1%	1%
grade 5 events	6835	7133	6615	7545	7636
	4%	4%	3%	4%	4%
grade 6 events	3977	4555	3594	3966	4374
	2%	2%	1%	2%	2%
grade 7 events	135123	133626	149770	148972	145763
	79%	78%	81%	80%	78%

2.2 Compared Parameters

Parameter	Planned	Actual	Parameter	Planned	Actual
Instrument	ACIS	ACIS	Obspar format version number	6	6
Detector	ACIS-01236	ACIS-01236	Obspar file type	PREDICTED	ACTUAL
Grating	NONE	NONE	Obspar update status	NONE	UPDATED
Data mode	VFAINT	VFAINT	Number of optional ACIS chips dropped	0	0
Observation mode	POINTING	POINTING	On-chip summing requested	N	N
Pointing RA	296.214140	296.2332702699832	Subarray requested	NONE	NONE
Pointing Dec	-14.785485	-14.8056869016067	Alternating exposures requested	N	N
Pointing Roll	282.080922	282.2944973942556	Primary exposure time	0.000000	3.1
SIM focus pos (mm)	-0.782348	-0.7809083437167272			
SIM defocus (mm)	0	0.001439871863259334			
SIM translation stage pos (mm)	-233.592463	-233.5874344608287			
SIM translation stage offset (mm)	0	-0.005018542100998502			
Observation start time	152801382.184000	152800168.84777			
Observation start date	2002-11-04T12:48:38	2002-11-04T12:29:28			
Observation end time	152829751.184000	152830066.04901			
Observation end date	2002-11-04T20:41:27	2002-11-04T20:47:46			
Read mode	TIMED	TIMED			

2.3 Aspect



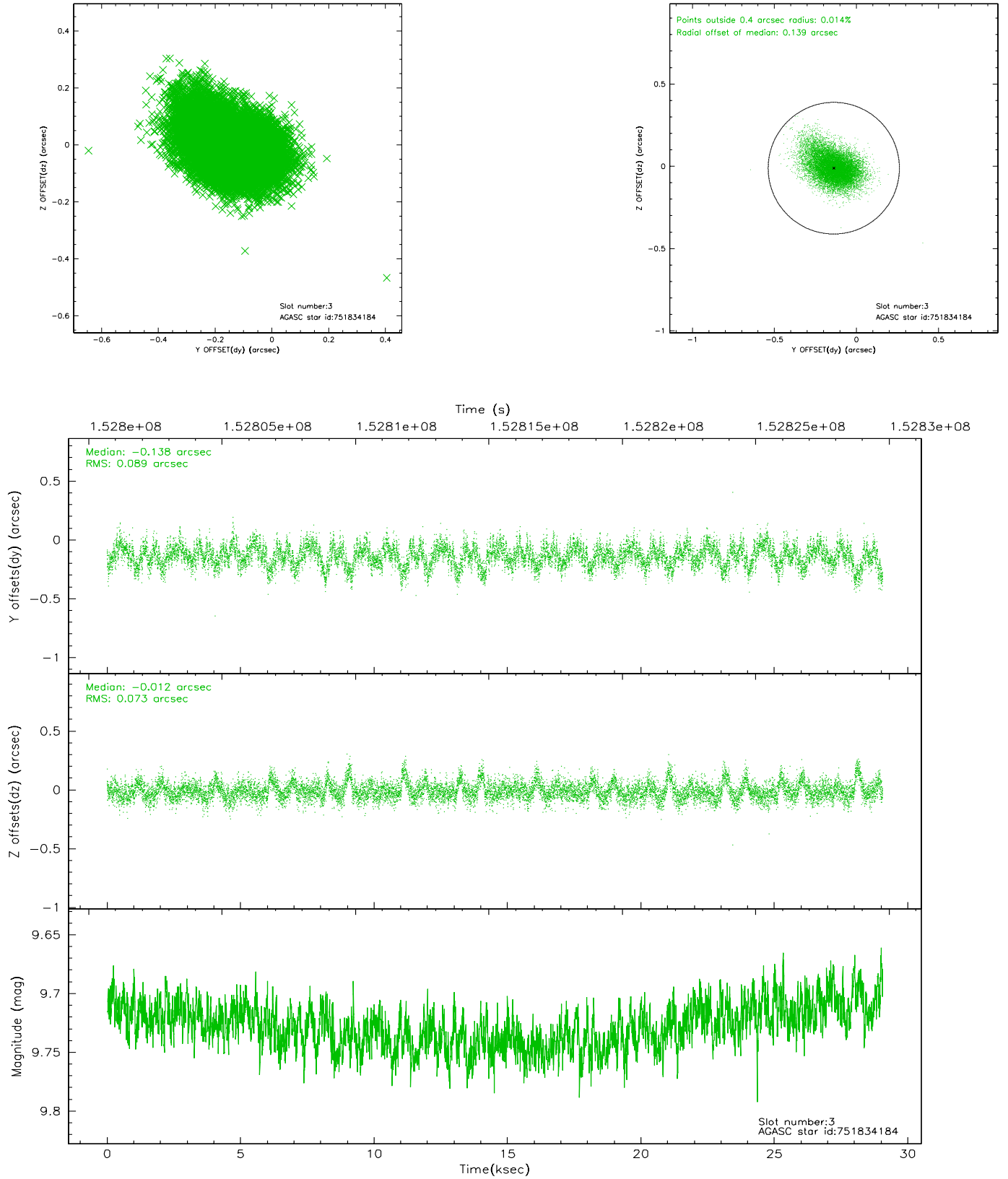


Slot Statistics

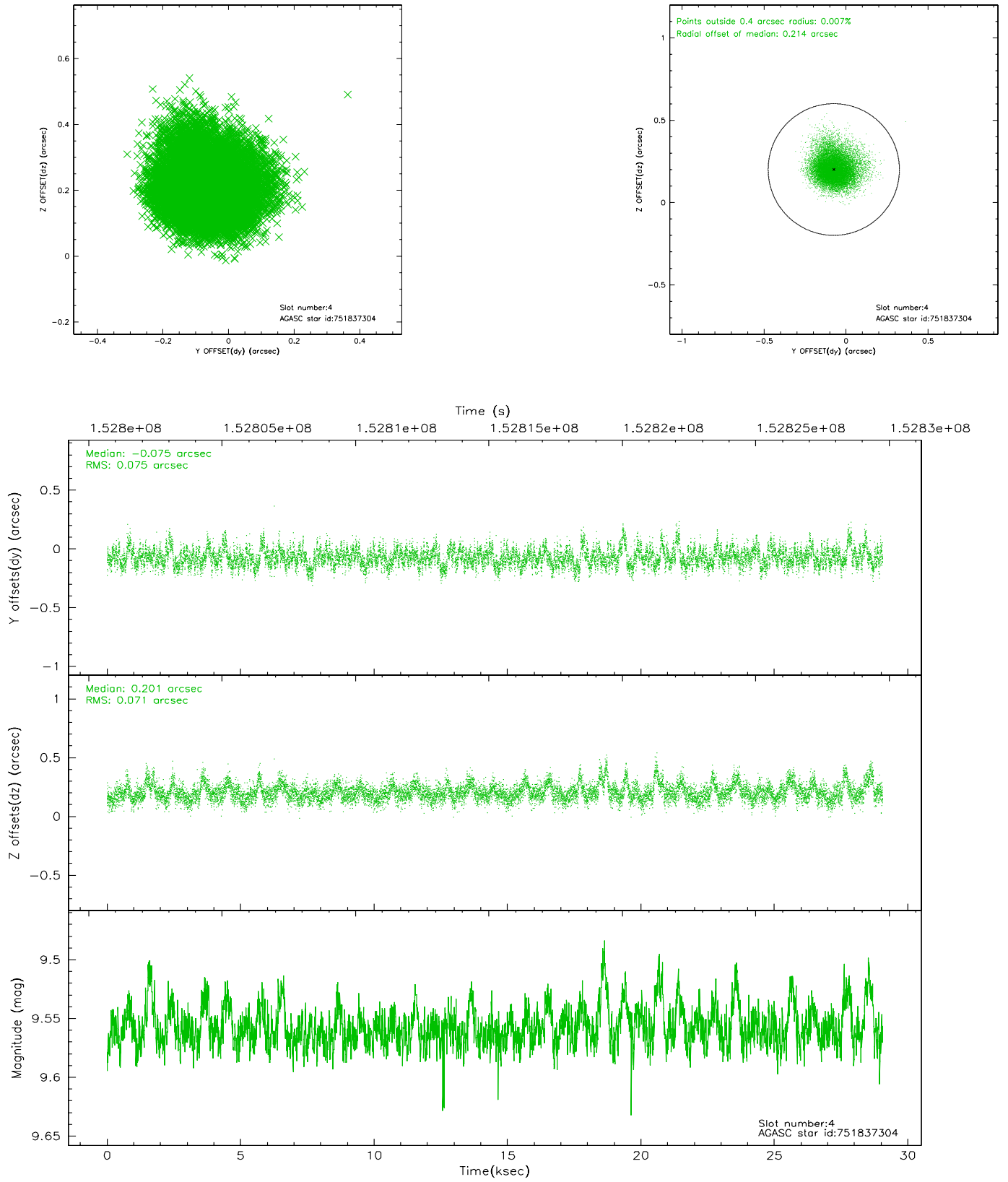
slot	status	id	mag	n_pts	med_dy	med_dz	dr1	dr2	ra	dec	mean_y	mean_z
0	FID	ACIS-I-1	7.24	7088	-0.056	0.098	0.009	0.016	0.000000	0.000000	938.03	-831.87
1	FID	ACIS-I-5	7.24	7088	-0.023	0.017	0.012	0.020	0.000000	0.000000	-1809.99	1065.50
2	FID	ACIS-I-6	7.26	7089	-0.015	-0.043	0.012	0.019	0.000000	0.000000	403.53	1710.03
3	GUIDE	751834184	9.73	14169	-0.138	-0.012	0.119	0.205	296.399856	-14.465096	-991.10	874.70
4	GUIDE	751837304	9.56	14166	-0.075	0.201	0.108	0.184	296.594330	-14.462346	-858.28	1539.81
5	GUIDE	825625880	9.63	14173	0.008	-0.120	0.097	0.165	295.781472	-15.310551	1536.99	-1864.32
6	GUIDE	825643136	9.22	14173	0.166	-0.223	0.119	0.187	295.709875	-15.353057	1635.54	-2139.49
7	GUIDE	827336272	9.26	14165	0.039	0.146	0.105	0.169	296.683541	-15.050874	1278.64	1396.18

2.4 Star Slots

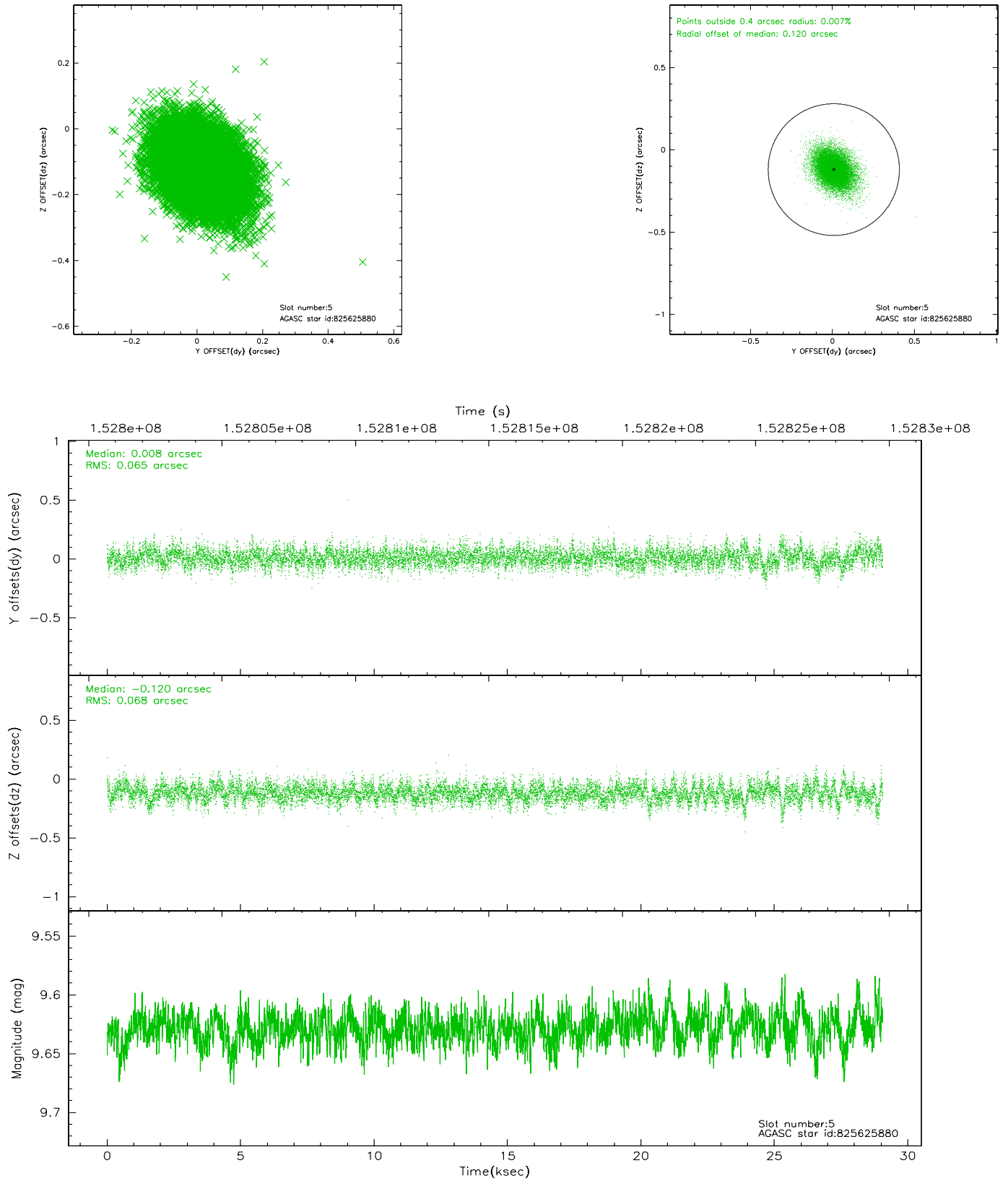
2.4.1 Slot 3



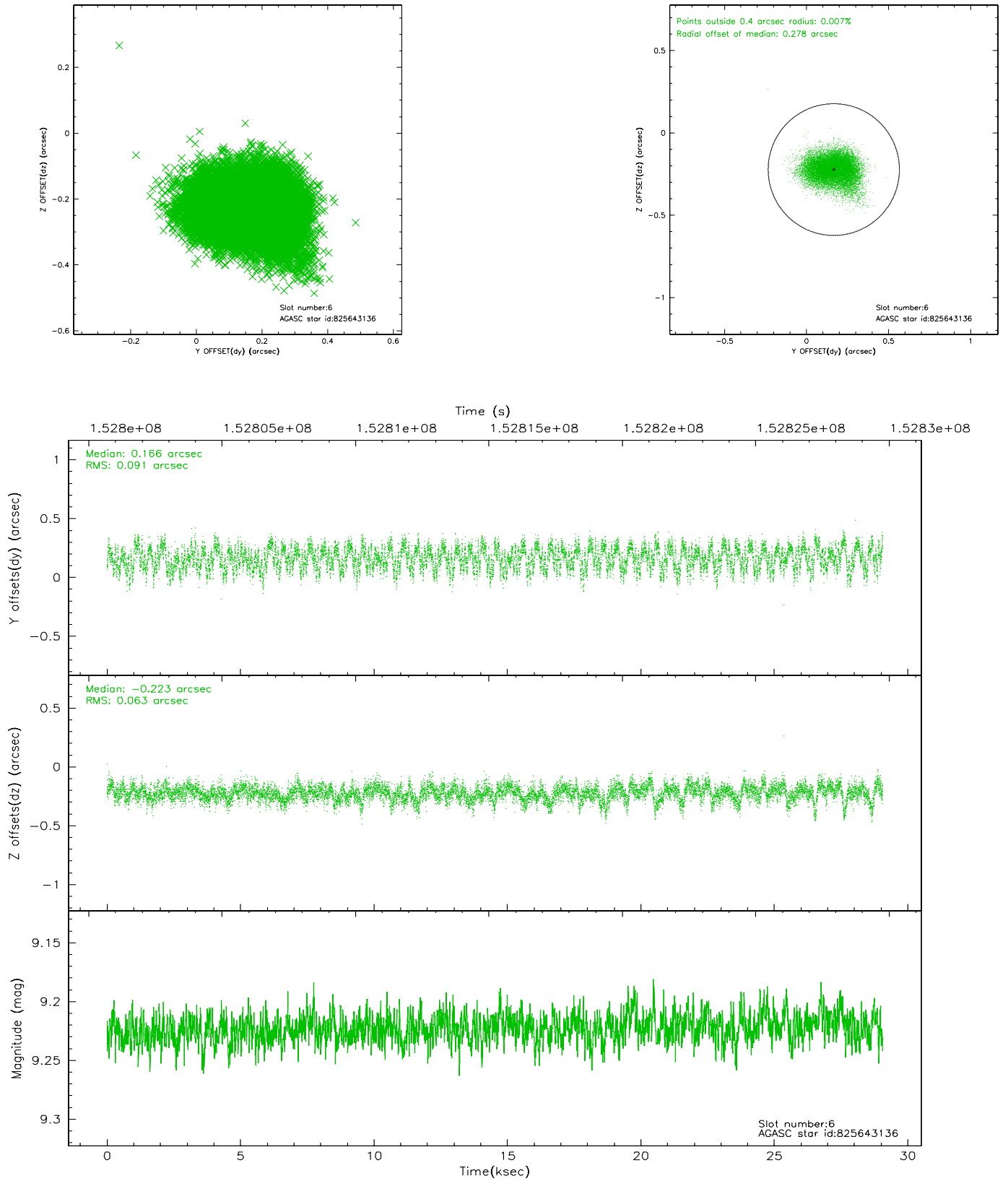
2.4.2 Slot 4



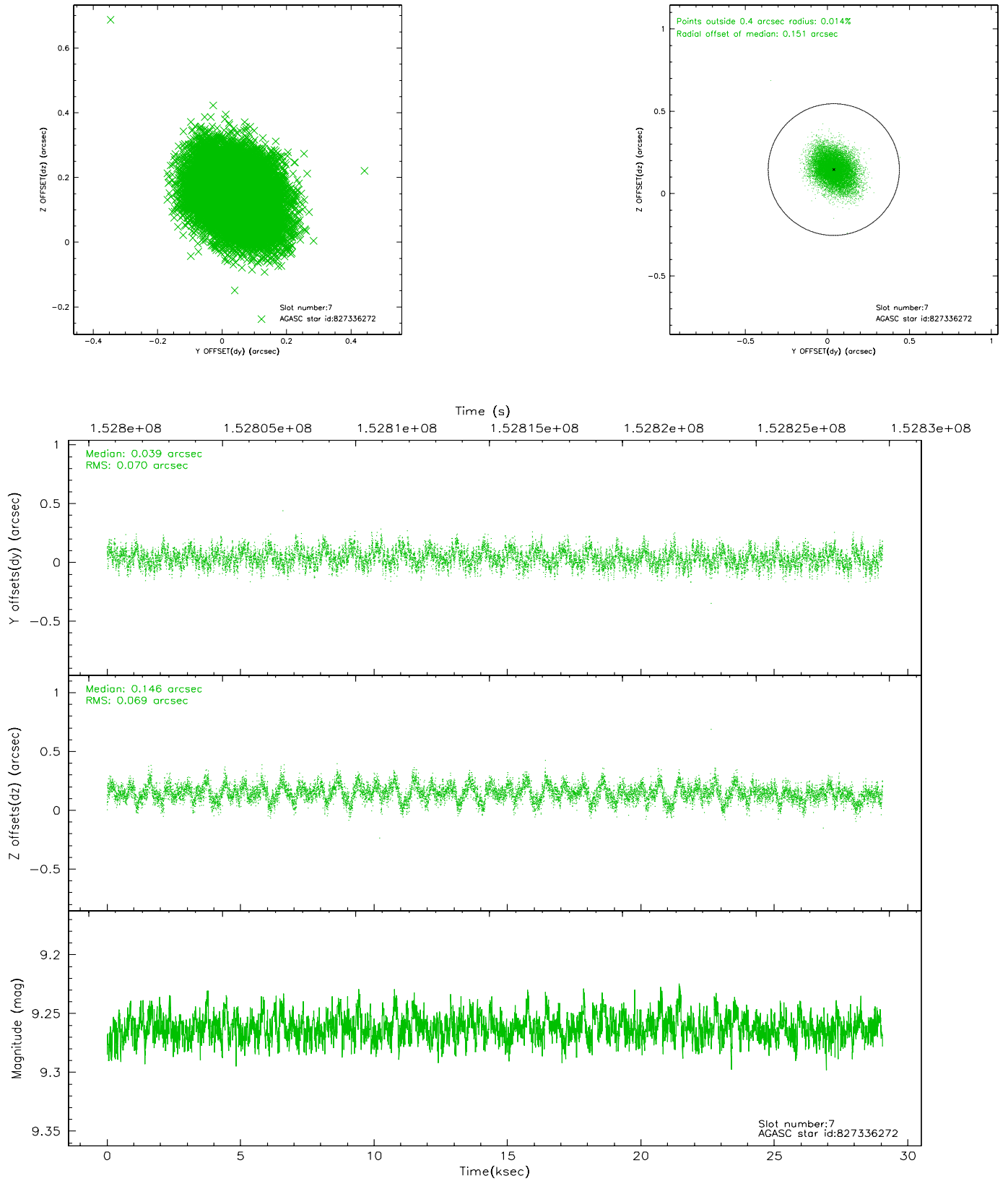
2.4.3 Slot 5



2.4.4 Slot 6

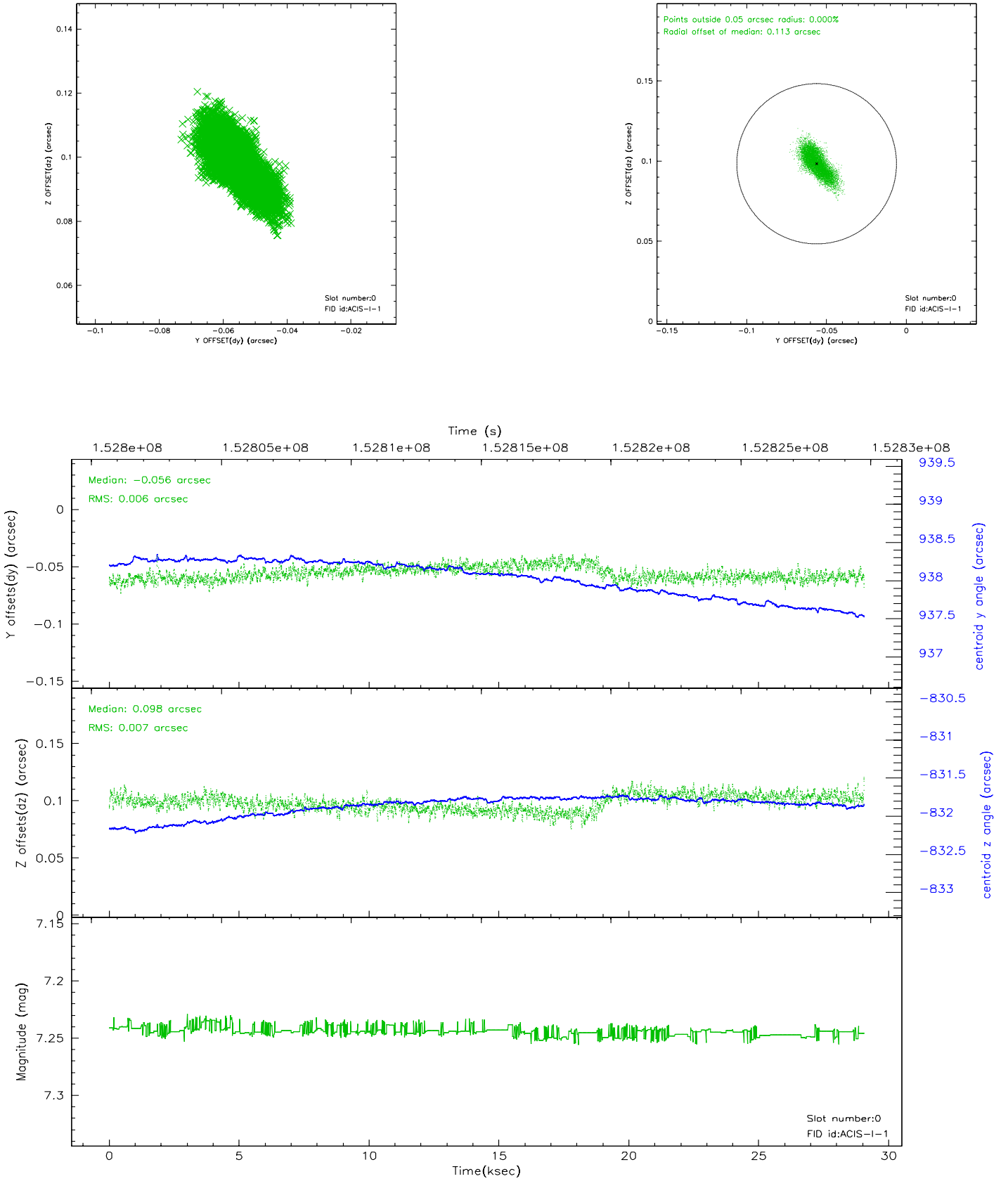


2.4.5 Slot 7

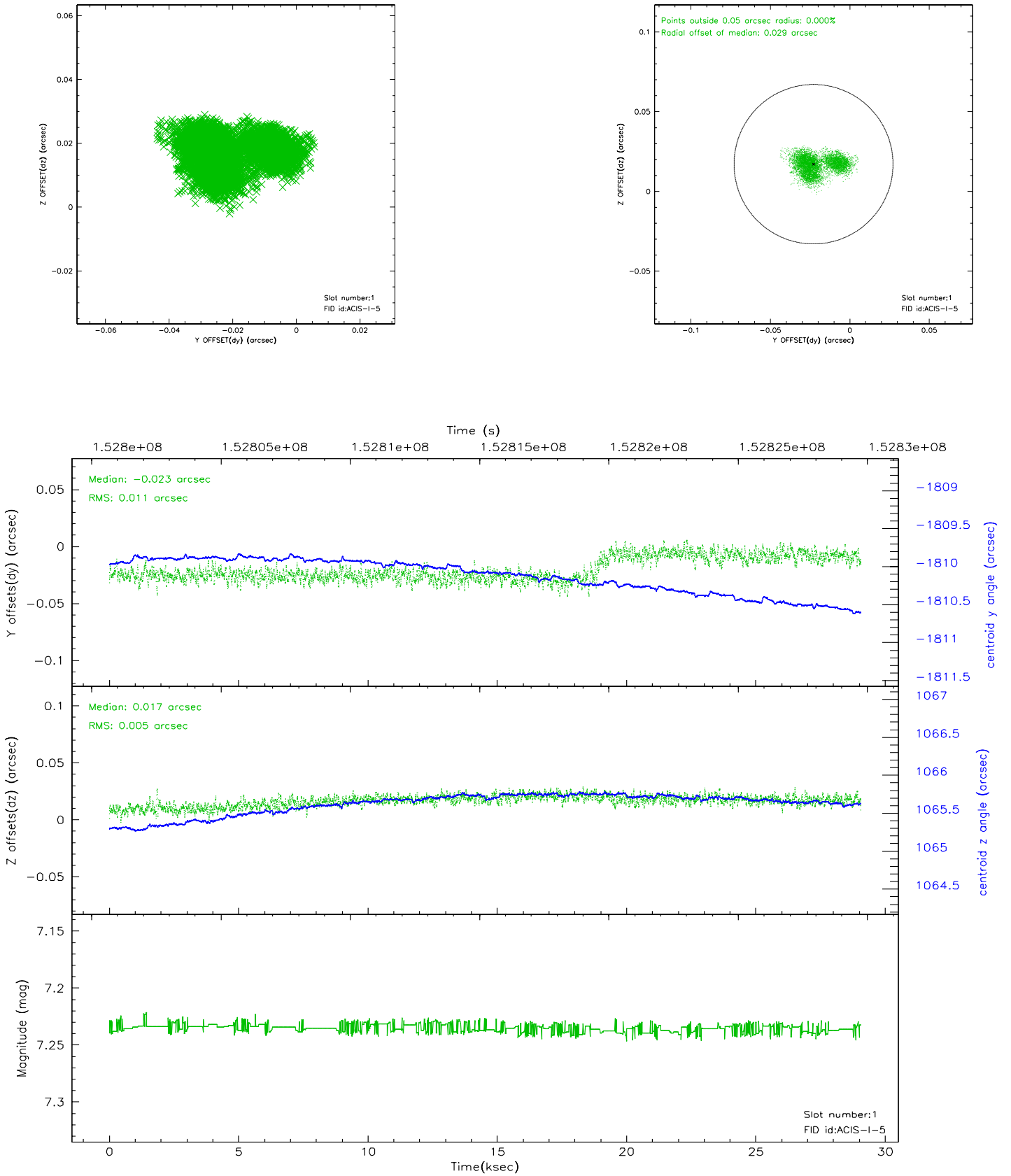


2.5 FID Slots

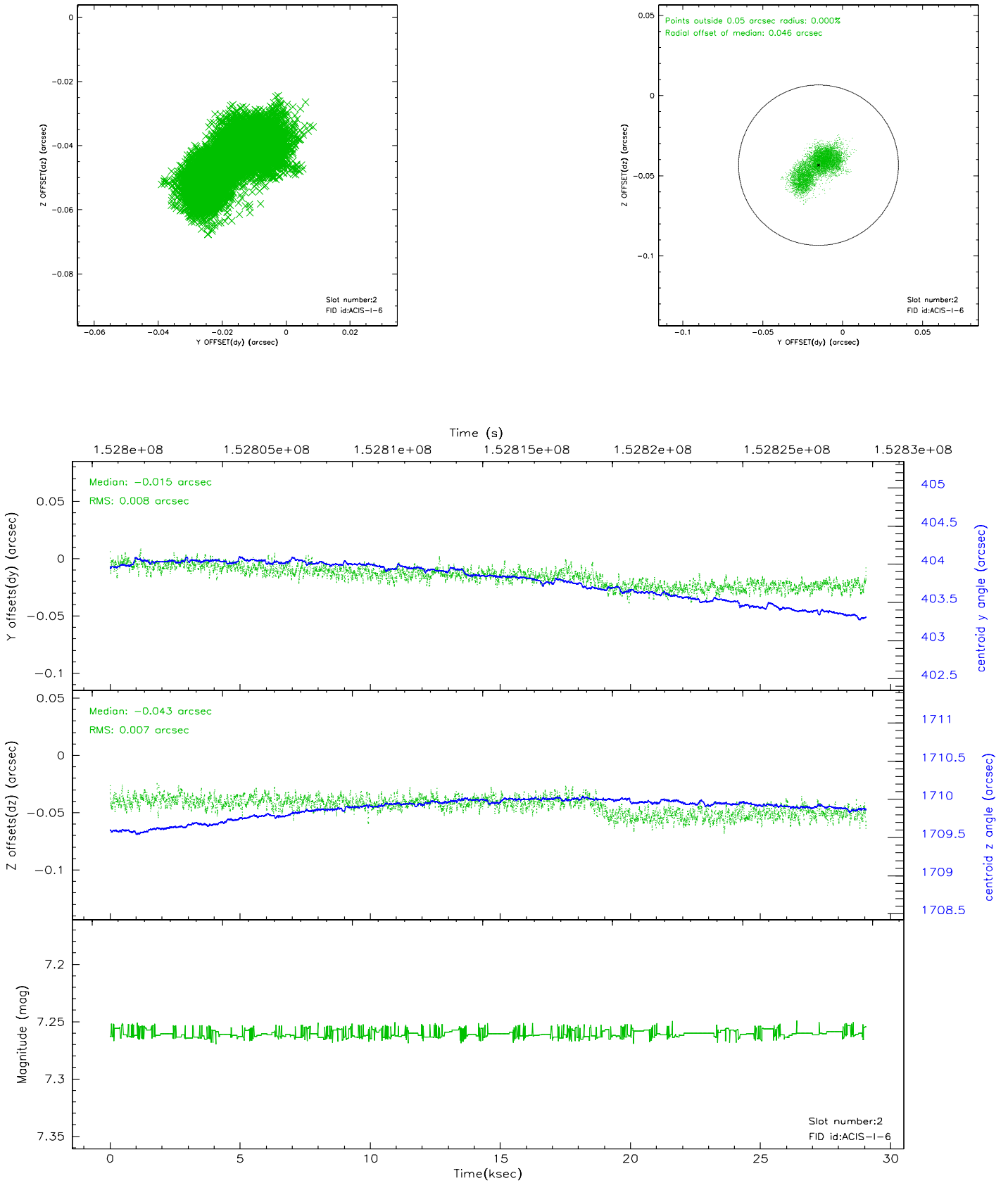
2.5.1 Slot 0



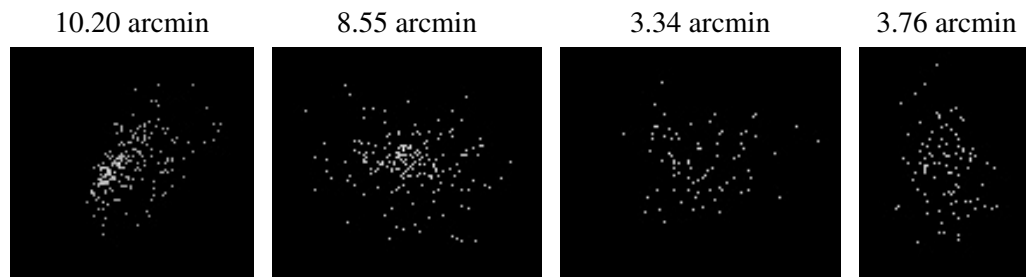
2.5.2 Slot 1



2.5.3 Slot 2



3 Point Sources



A Summary

A.1 Status

V&V Scientist	Jen Lauer
V&V Date (YYYY-MM-DD)	2006.10.12
V&V Edition	1
V&V Disposition and Status	OK
V&V Charge Time	28.488

A.2 Comments

Some of the numerous x-ray point sources fall on the gap between the nodes of the CCD chips and have been dithered over this gap. Dithering over the node boundary, which has lower sensitivity, can give a false indication of variability.