

V&V Reference Report

L2 ASCDS Version : 8.4.4

Observation 9814 - L2 Version 2
Chandra X-Ray Center

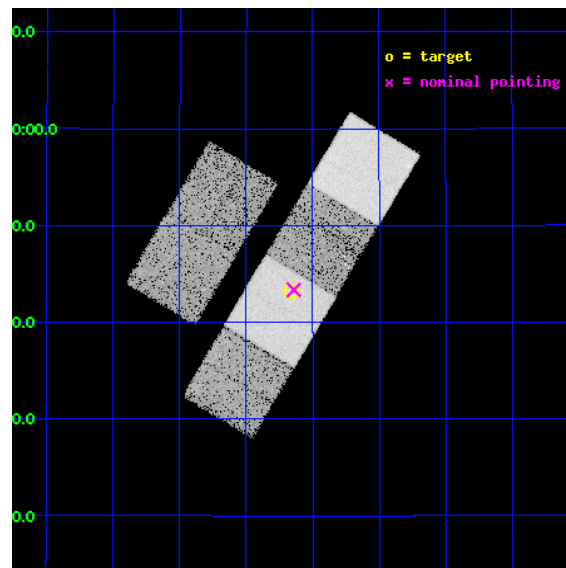
L2 Processing Date : May 9 2012

Contents

1	Front	2
2	OBI	3
2.1	OBI	3
2.1.1	Images	3
2.1.2	Bias	3
2.1.3	Parameters	4
2.1.4	Events	4
2.2	Compared Parameters	5
2.3	Aspect	6
2.4	Star Slots	9
2.4.1	Slot 3	9
2.4.2	Slot 4	10
2.4.3	Slot 5	11
2.4.4	Slot 6	12
2.4.5	Slot 7	13
2.5	FID Slots	14
2.5.1	Slot 0	14
2.5.2	Slot 1	15
2.5.3	Slot 2	16
A	Summary	17
A.1	Status	17
A.2	Comments	17

1 Front

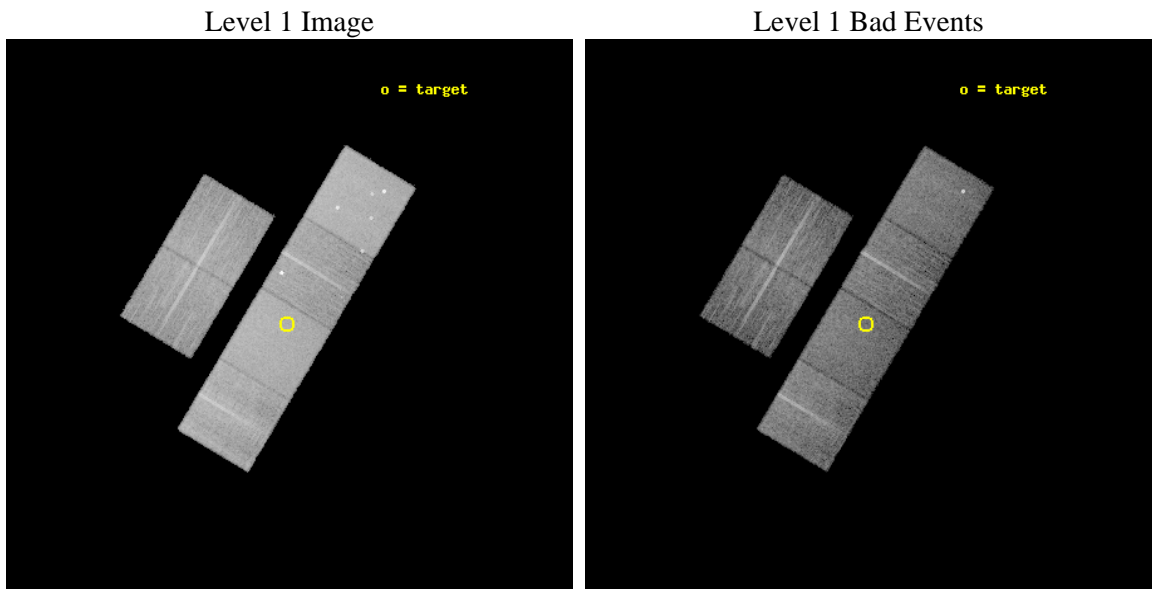
seq_num	701771	Sequence number
obs_id	9814	Observation id
title	Chandra observation of a flaring galaxy with strong optical emission-line light echo	Proposal title
observer	Dr. Stefanie Komossa	Principal investigator
object	SDSSJ0952+2143	Source name
dtcycle	0	
cycle	P	events from which exps? Prim/Second/Both
ra_targ	148.04	Observer's specified target RA [deg]
dec_targ	21.720361	Observer's specified target Dec [deg]
ra_nom	148.03536569534	Nominal RA [deg]
dec_nom	21.722579271549	Nominal Dec [deg]
roll_nom	120.87288417096	Nominal Roll [deg]
revision	2	Processing version of data
ontime	9907.1999631524	Sum of GTIs [s]
livetime	9781.7490318193	Livetime [s]
ontime2	9907.1999631524	Sum of GTIs [s]
ontime3	9907.1999631524	Sum of GTIs [s]
ontime5	9907.1999631524	Sum of GTIs [s]
ontime6	9907.1999631524	Sum of GTIs [s]
ontime7	9907.1999631524	Sum of GTIs [s]
ontime8	9907.1999631524	Sum of GTIs [s]
l2events	158296	Number of level 2 events



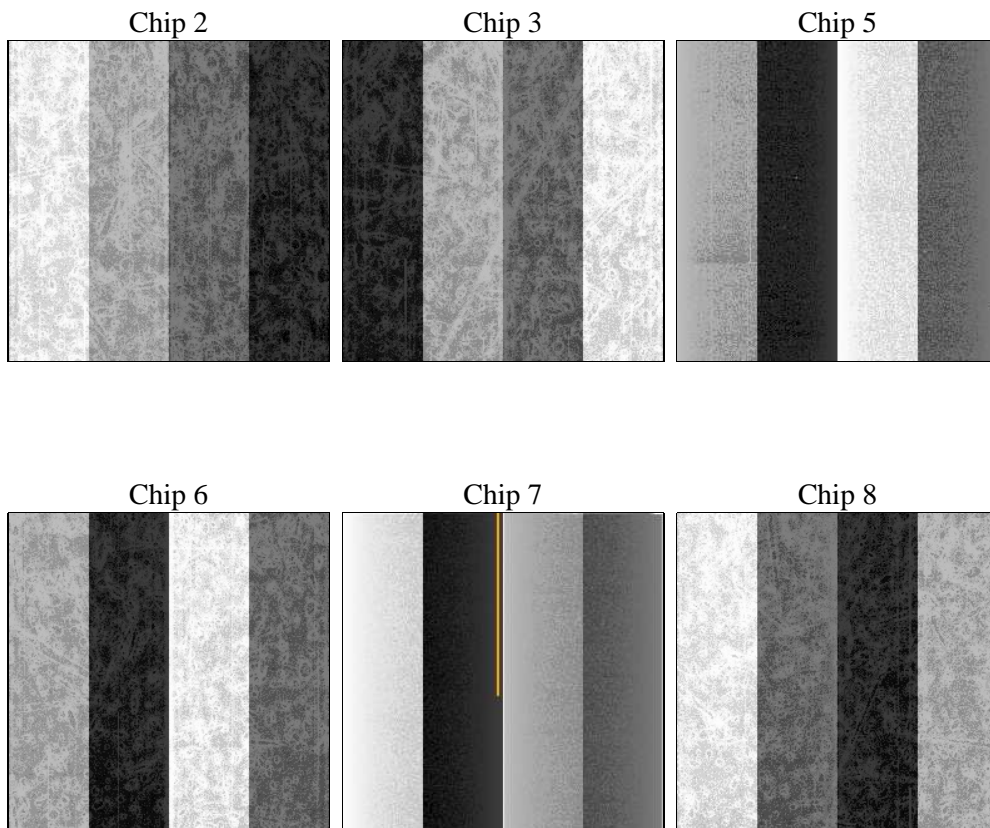
2 OBI

2.1 OBI

2.1.1 Images



2.1.2 Bias



2.1.3 Parameters

obi_num	0	Obi number	sched_exp_time	9790.000000	[s] Scheduled observation exposure time
ascdsver	8.4.4	Processing system revision	ontime	9907.1999631524	Sum of GTIs [s]
caldsver	4.4.9	 	ontime2	9907.1999631524	Sum of GTIs [s]
date	2012-05-09T03:10:31	Date and time of file creation	ontime3	9907.1999631524	Sum of GTIs [s]
revision	2	Processing version of data	ontime5	9907.1999631524	Sum of GTIs [s]
			ontime6	9907.1999631524	Sum of GTIs [s]
			ontime7	9907.1999631524	Sum of GTIs [s]
			ontime8	9907.1999631524	Sum of GTIs [s]
			l1events	692680	Number of level 1 events

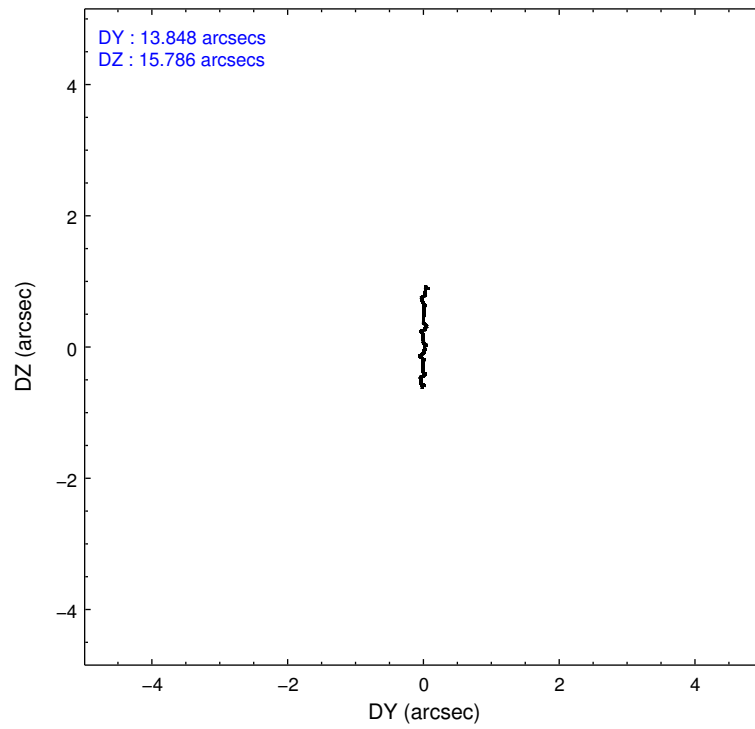
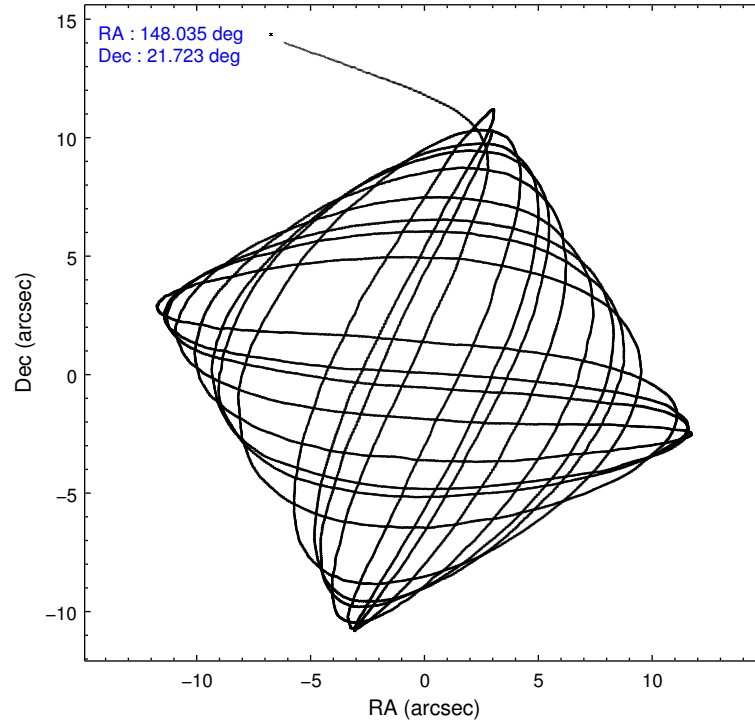
2.1.4 Events

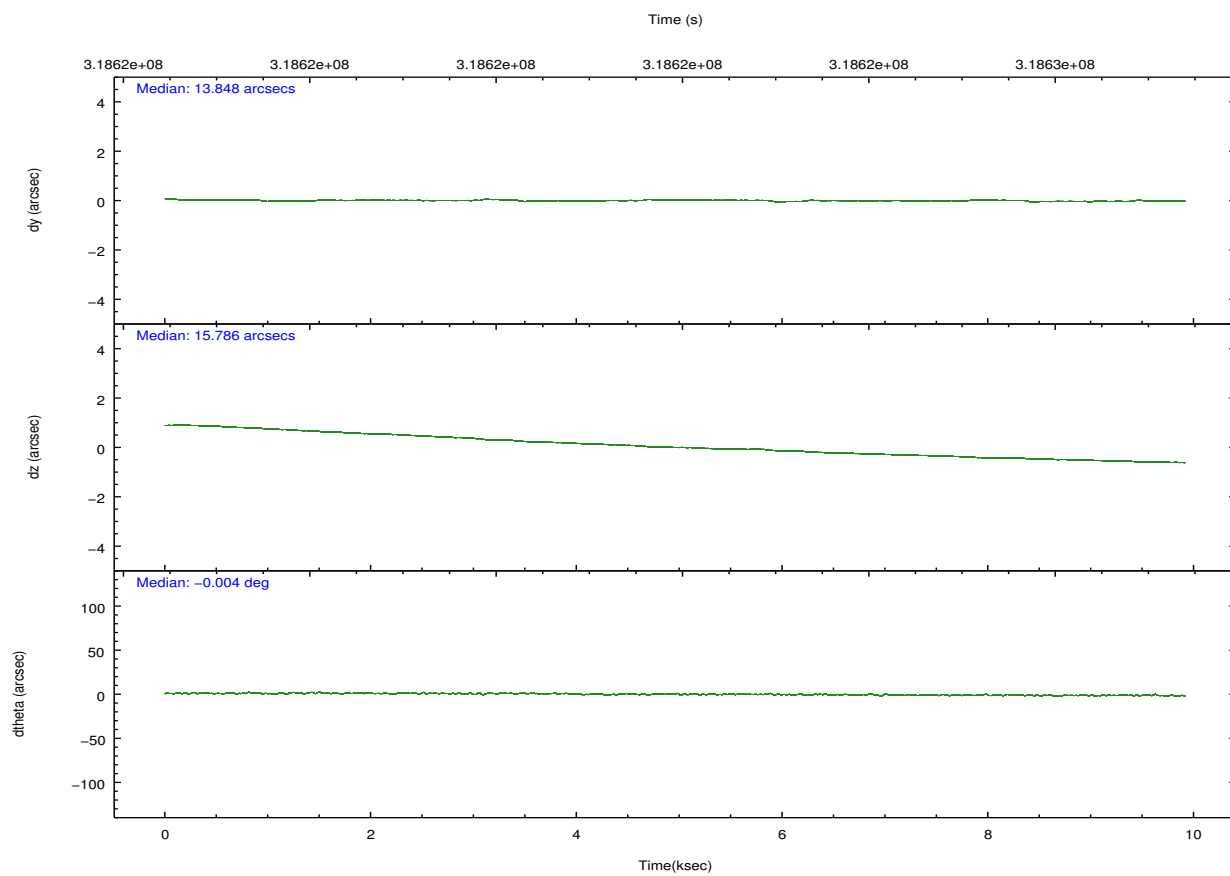
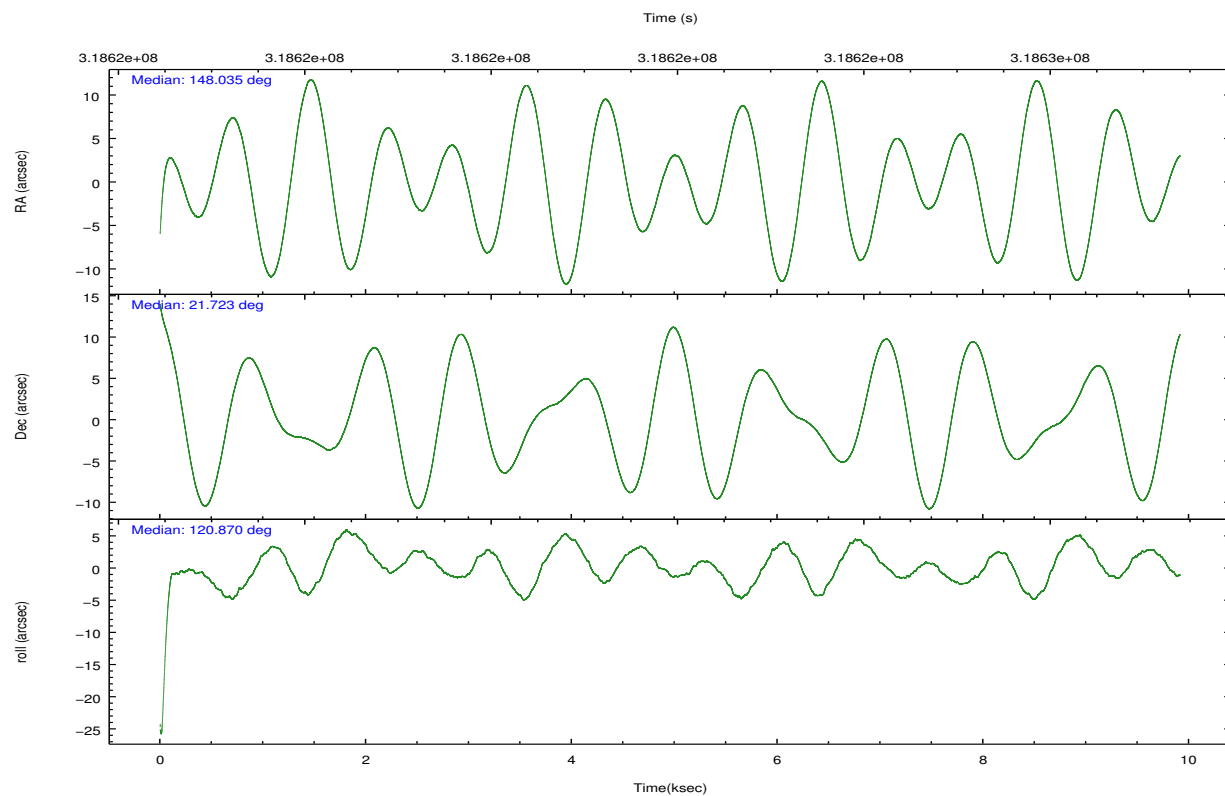
	ccd 2	ccd 3	ccd 5	ccd 6	ccd 7	ccd 8		ccd 2	ccd 3	ccd 5	ccd 6	ccd 7	ccd 8
level 1 events	96903	90564	150742	98028	132151	124292	grade 0 events	4690	4900	7151	4497	4612	8777
rejected events	85789	79307	81794	83501	77078	96233		4%	5%	4%	4%	3%	7%
rejected %	88%	87%	54%	85%	58%	77%	grade 1 events	53	68	227	42	133	102
								0%	0%	0%	0%	0%	0%
							grade 2 events	2457	2229	20924	2553	11298	6481
								2%	2%	13%	2%	8%	5%
							grade 3 events	1060	1079	2932	4021	4680	2929
								1%	1%	1%	4%	3%	2%
							grade 4 events	1061	1072	2444	1105	4650	2790
								1%	1%	1%	1%	3%	2%
							grade 5 events	4001	4556	11342	4634	12473	6277
								4%	5%	7%	4%	9%	5%
							grade 6 events	1917	2034	35926	2426	30188	7230
								1%	2%	23%	2%	22%	5%
							grade 7 events	81664	74626	69796	78750	64117	89706
								84%	82%	46%	80%	48%	72%

2.2 Compared Parameters

Parameter	Planned	Actual	Parameter	Planned	Actual
Instrument	ACIS	ACIS	Obspar format version number	7	7
Detector	ACIS-235678	ACIS-235678	Obspar file type	PREDICTED	ACTUAL
Grating	NONE	NONE	Obspar update status	NONE	UPDATED
Data mode	FAINT	FAINT	CCD I0 on	N	N
Observation mode	POINTING	POINTING	CCD I1 on	N	N
[deg] Pointing RA	148.061269	148.0353656953439	CCD I2 on	O2	Y
[deg] Pointing Dec	21.709614	21.72257927154884	CCD I3 on	O3	Y
[deg] Pointing Roll	120.706702	120.8728841709643	CCD S0 on	N	N
[mm] SIM focus pos	-0.684267	-0.6828225247311905	CCD S1 on	O1	Y
[mm] SIM defocus	0	0.001444936568705701	CCD S2 on	O4	Y
[mm] SIM translation stage pos	-190.132523	-190.1425803651734	CCD S3 on	Y	Y
[mm] SIM translation stage offset	0	0.01005778216563158	CCD S4 on	O5	Y
[s] Observation start time (MET)	318617087.184000	318615746.06481	CCD S5 on	N	N
Observation start date	2008-02-05T16:43:42	2008-02-05T16:22:26	Number of optional ACIS chips dropped	0	0
[s] Observation end time (MET)	318626877.184000	318627495.12788	On-chip summing requested	N	N
Observation end date	2008-02-05T19:26:52	2008-02-05T19:38:15	Subarray requested	NONE	NONE
Read mode	TIMED	TIMED	Alternating exposures requested	N	N
			[s] Primary exposure time	0.000000	3.2

2.3 Aspect



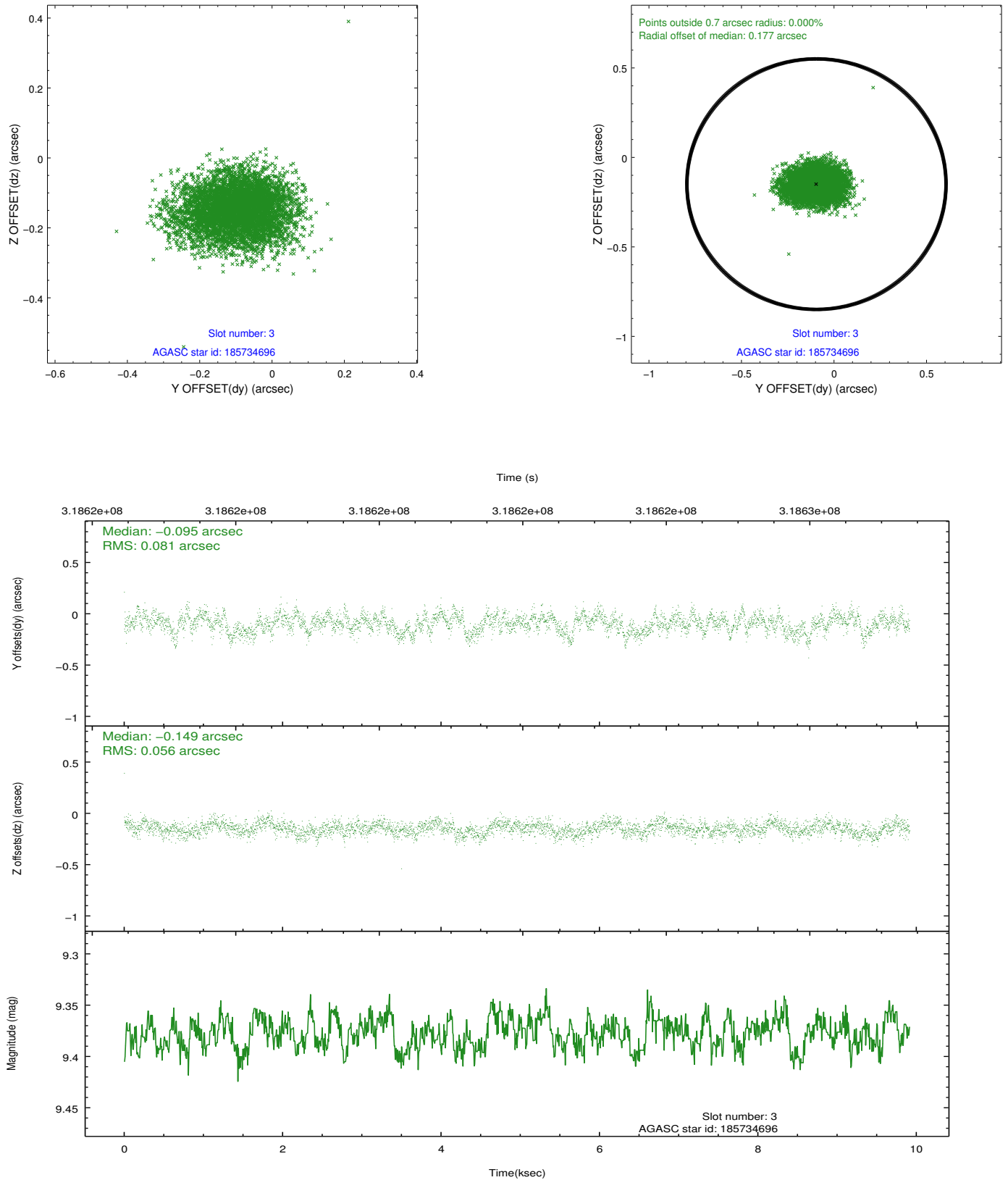


Slot Statistics

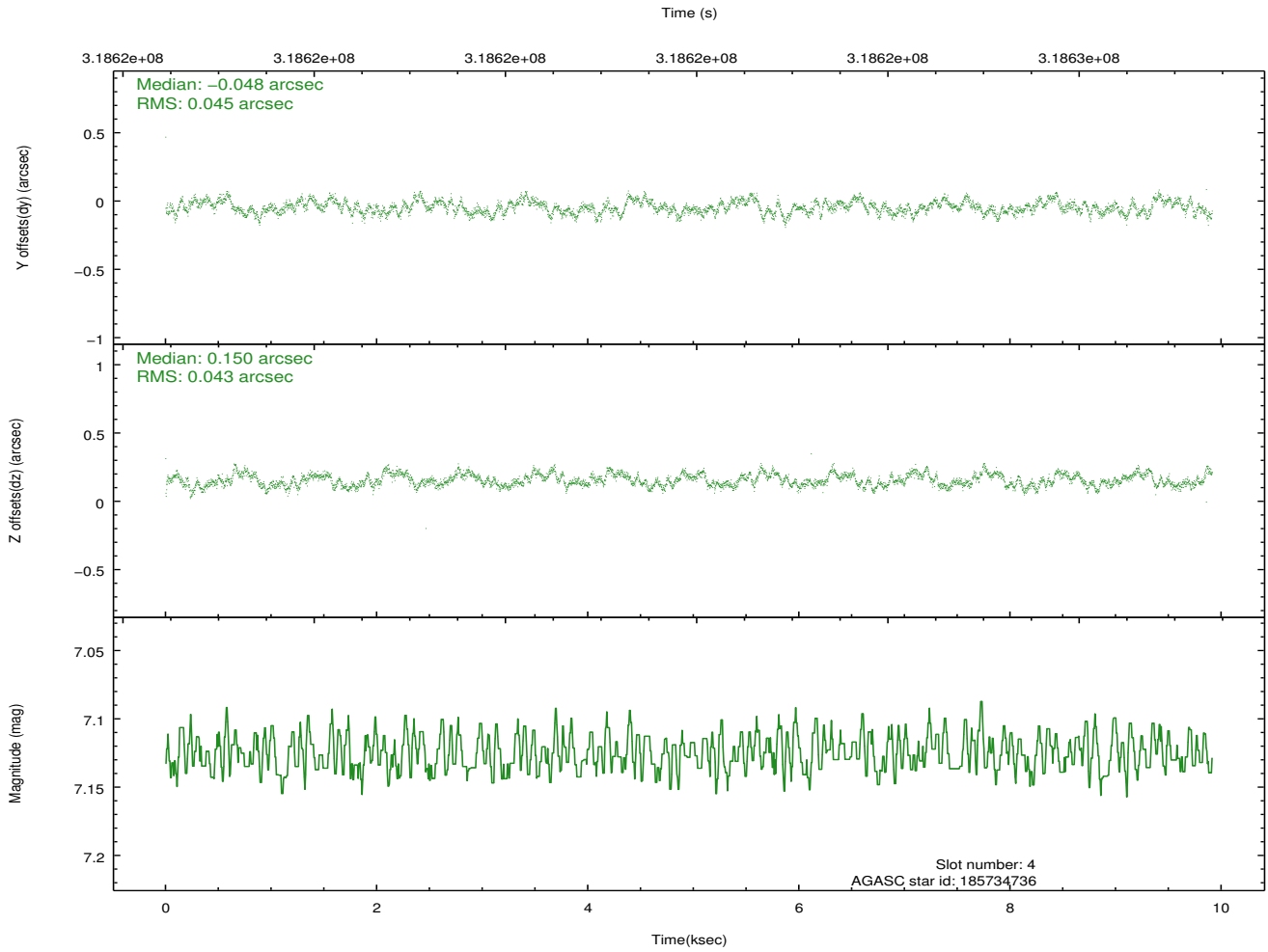
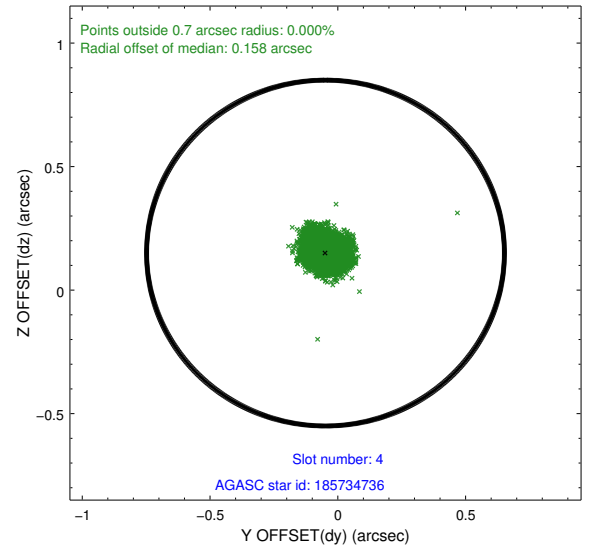
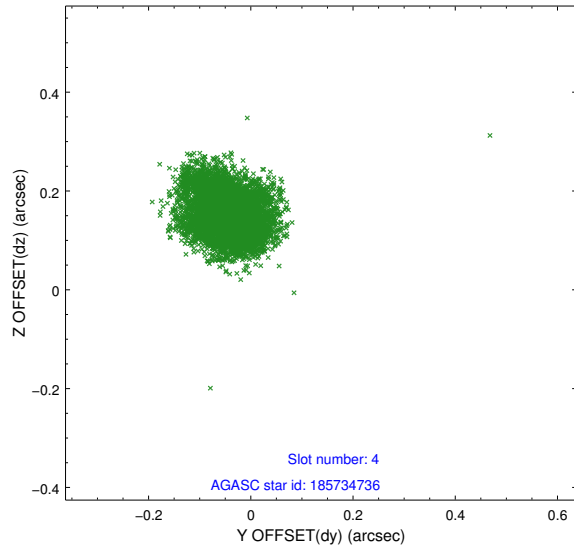
slot	status	id	mag	n_pts	med_dy	med_dz	dr1	dr2	ra	dec	mean_y	mean_z
0	FID	ACIS-S-1	7.19	2418	0.089	-0.051	0.021	0.033	0.000000	0.000000	929.29	-1732.91
1	FID	ACIS-S-2	7.09	2418	-0.097	-0.008	0.011	0.018	0.000000	0.000000	-766.50	-1737.93
2	FID	ACIS-S-6	7.32	2418	-0.015	0.064	0.014	0.022	0.000000	0.000000	394.67	808.00
3	GUIDE	185734696	9.38	4833	-0.095	-0.149	0.104	0.172	147.590211	22.131057	2108.75	574.85
4	GUIDE	185734736	7.13	4836	-0.048	0.150	0.067	0.103	148.268421	22.123316	928.78	-1354.21
5	GUIDE	185735080	9.23	4834	-0.003	-0.033	0.076	0.122	147.474948	21.951535	1750.62	1236.92
6	GUIDE	185739624	9.38	4833	0.176	0.150	0.096	0.155	148.696757	21.408600	-2014.96	-1279.67
7	GUIDE	185730648	9.45	4834	-0.029	-0.118	0.106	0.178	147.794480	20.888231	-2083.98	2280.91

2.4 Star Slots

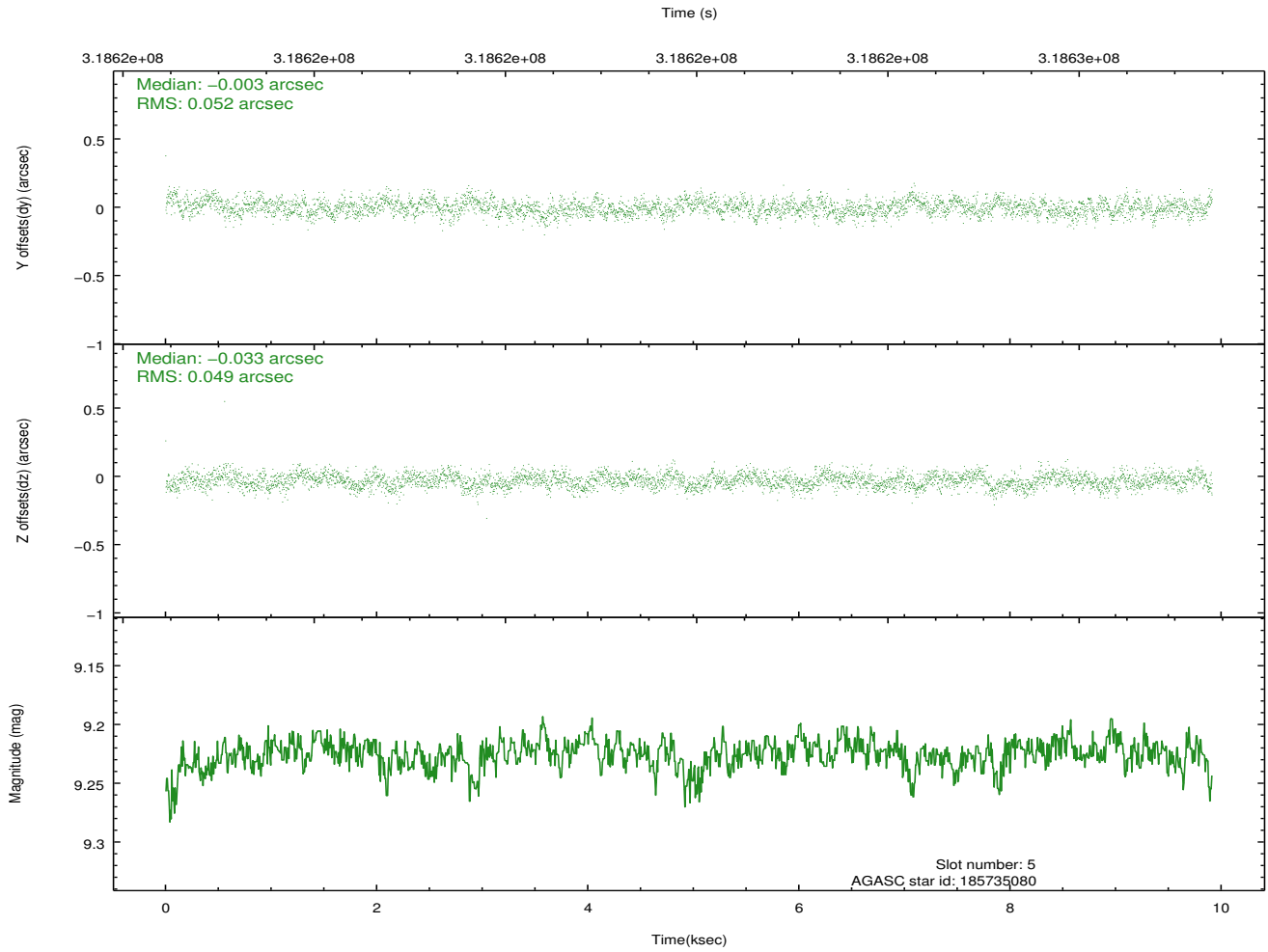
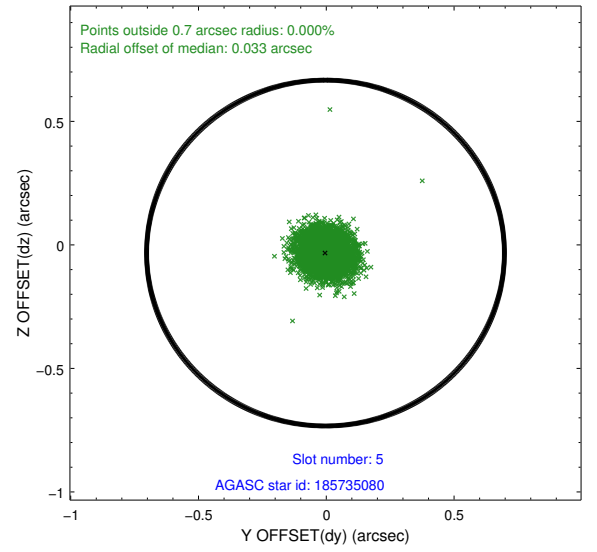
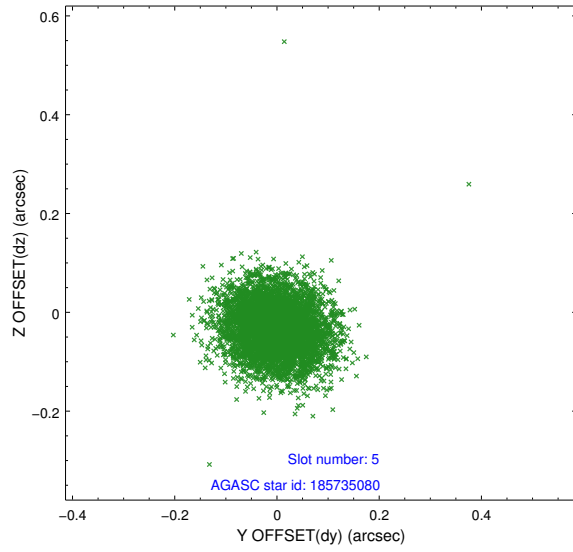
2.4.1 Slot 3



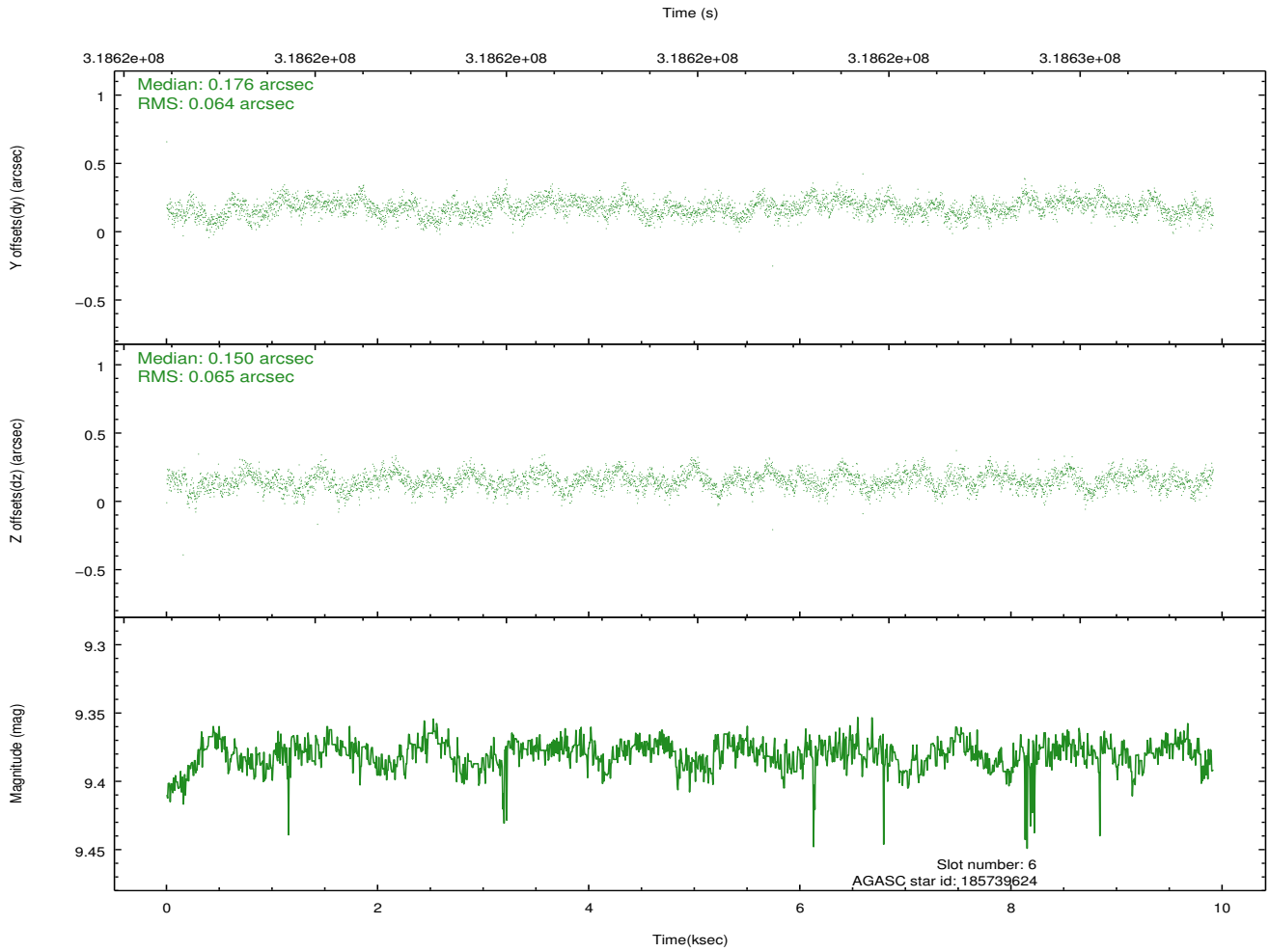
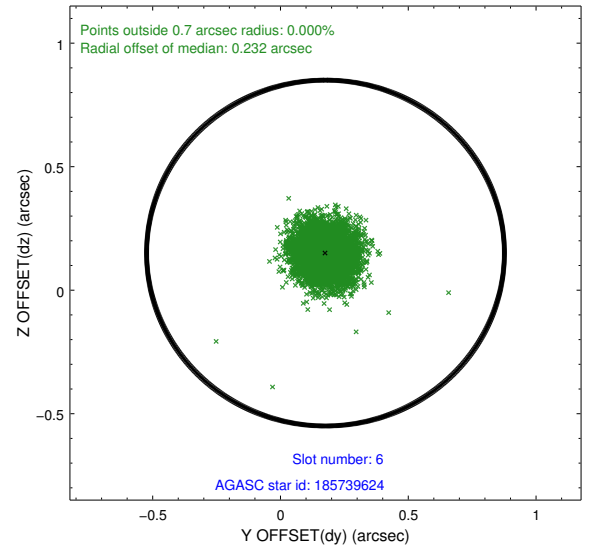
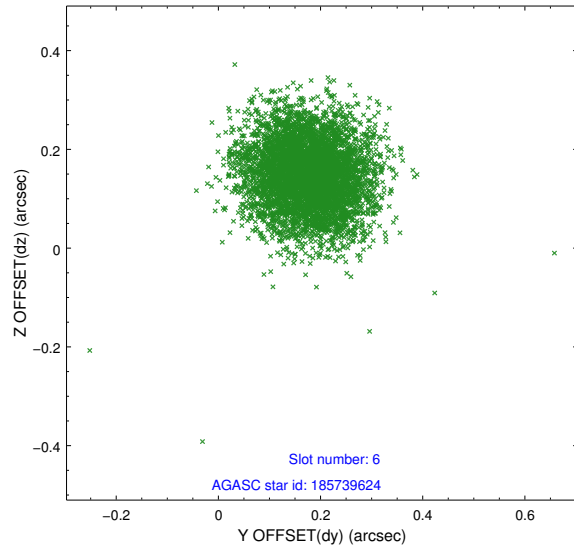
2.4.2 Slot 4



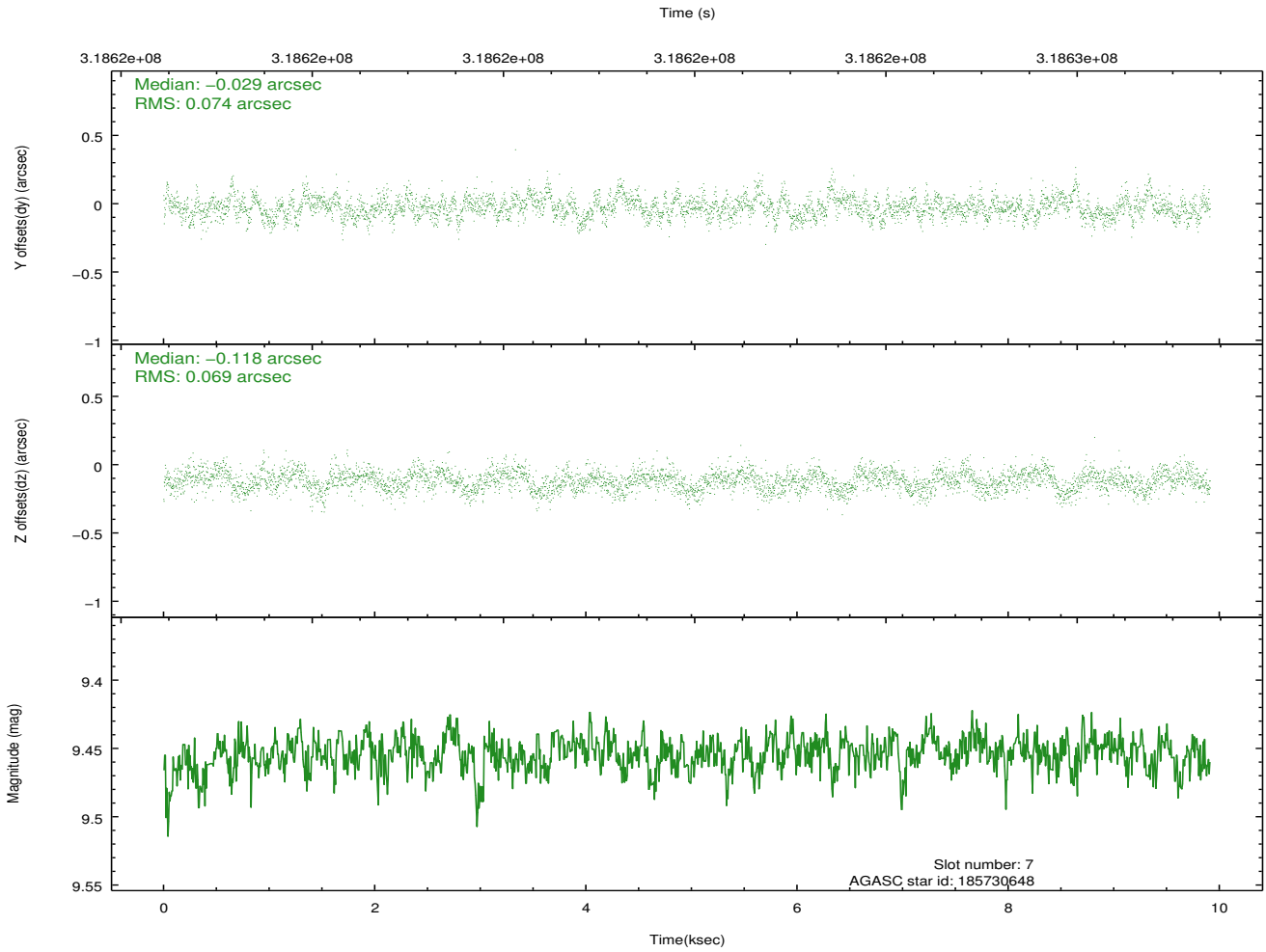
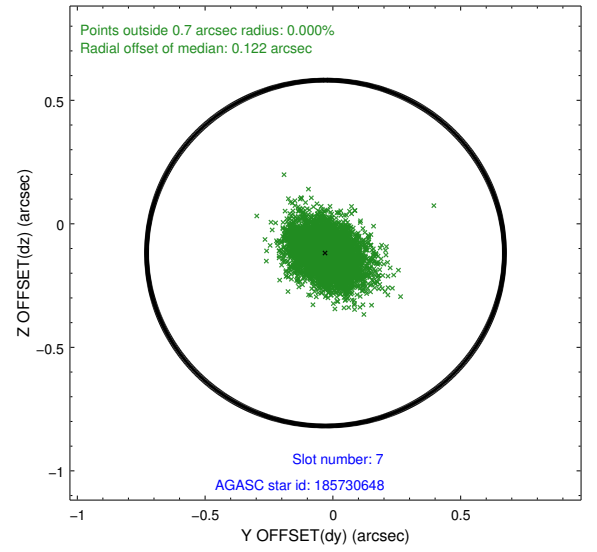
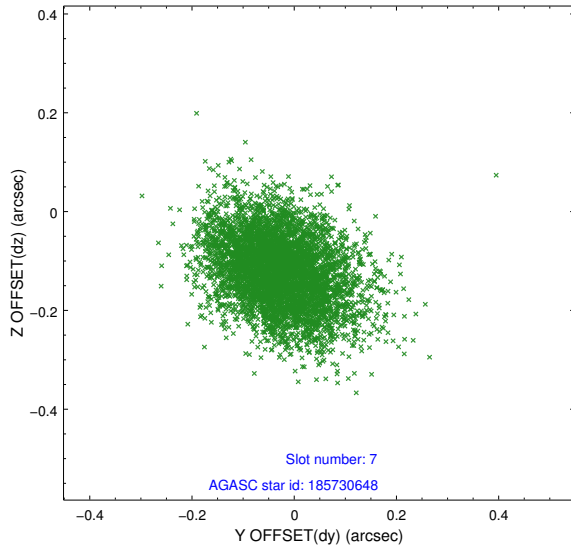
2.4.3 Slot 5



2.4.4 Slot 6

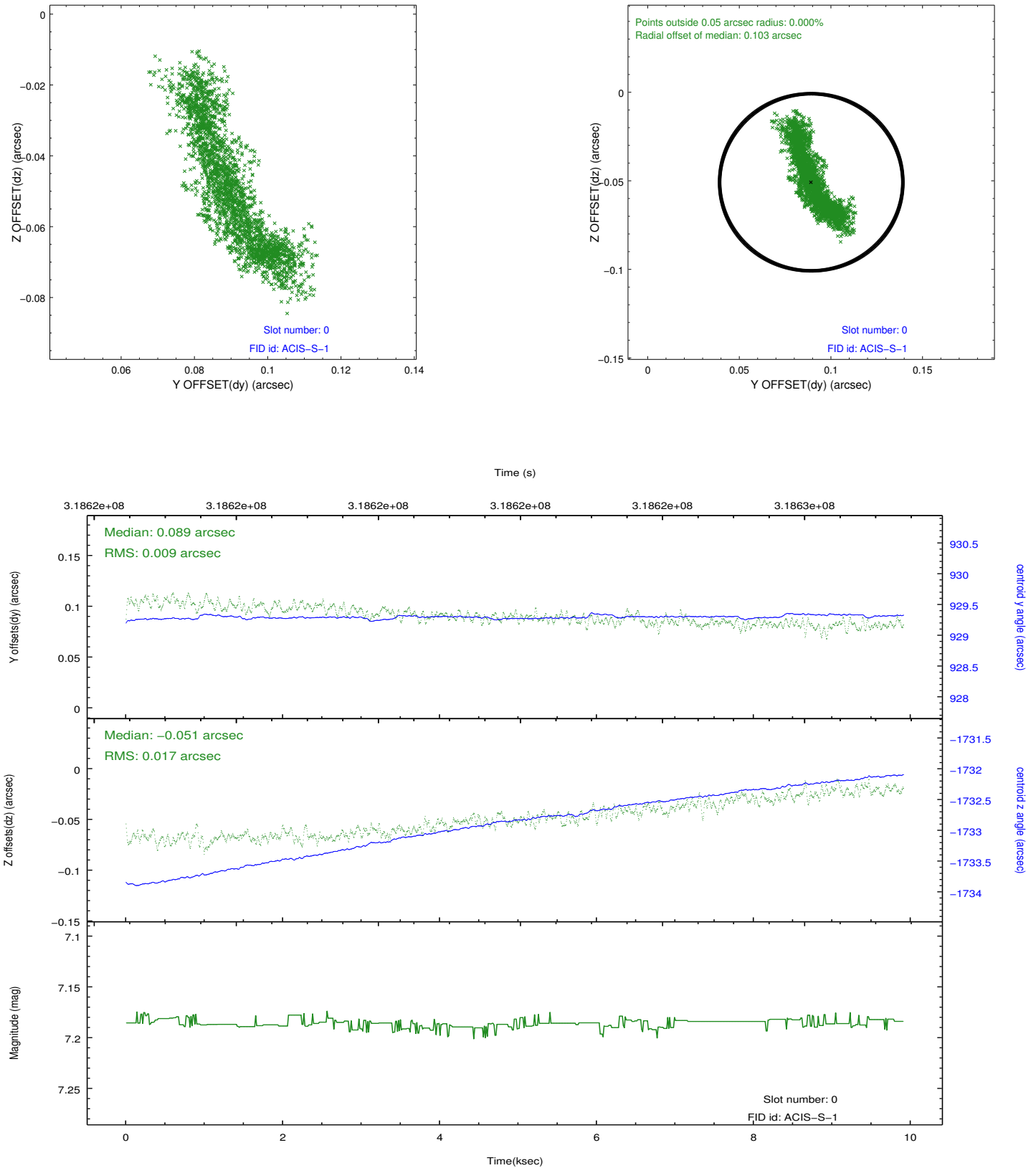


2.4.5 Slot 7

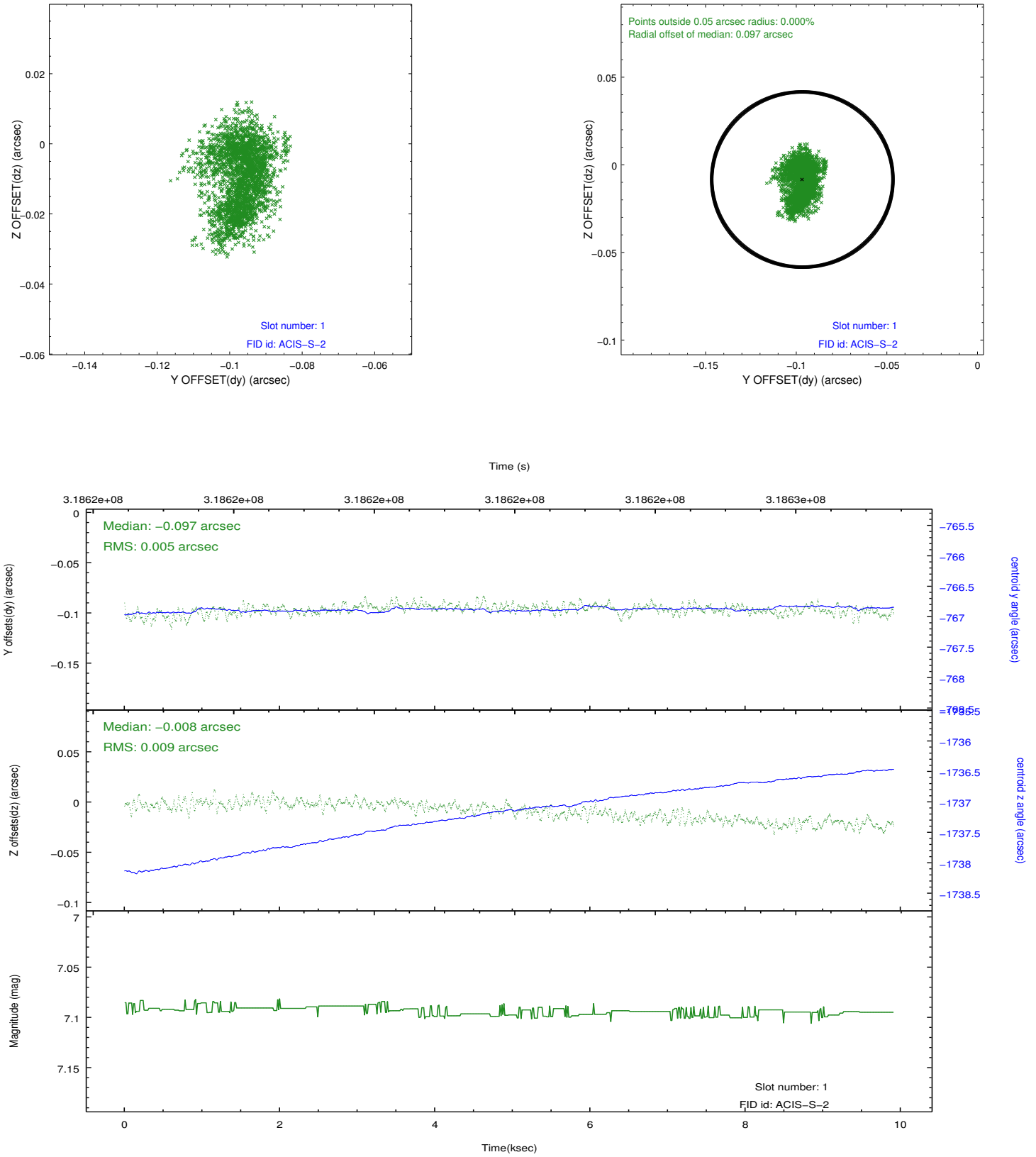


2.5 FID Slots

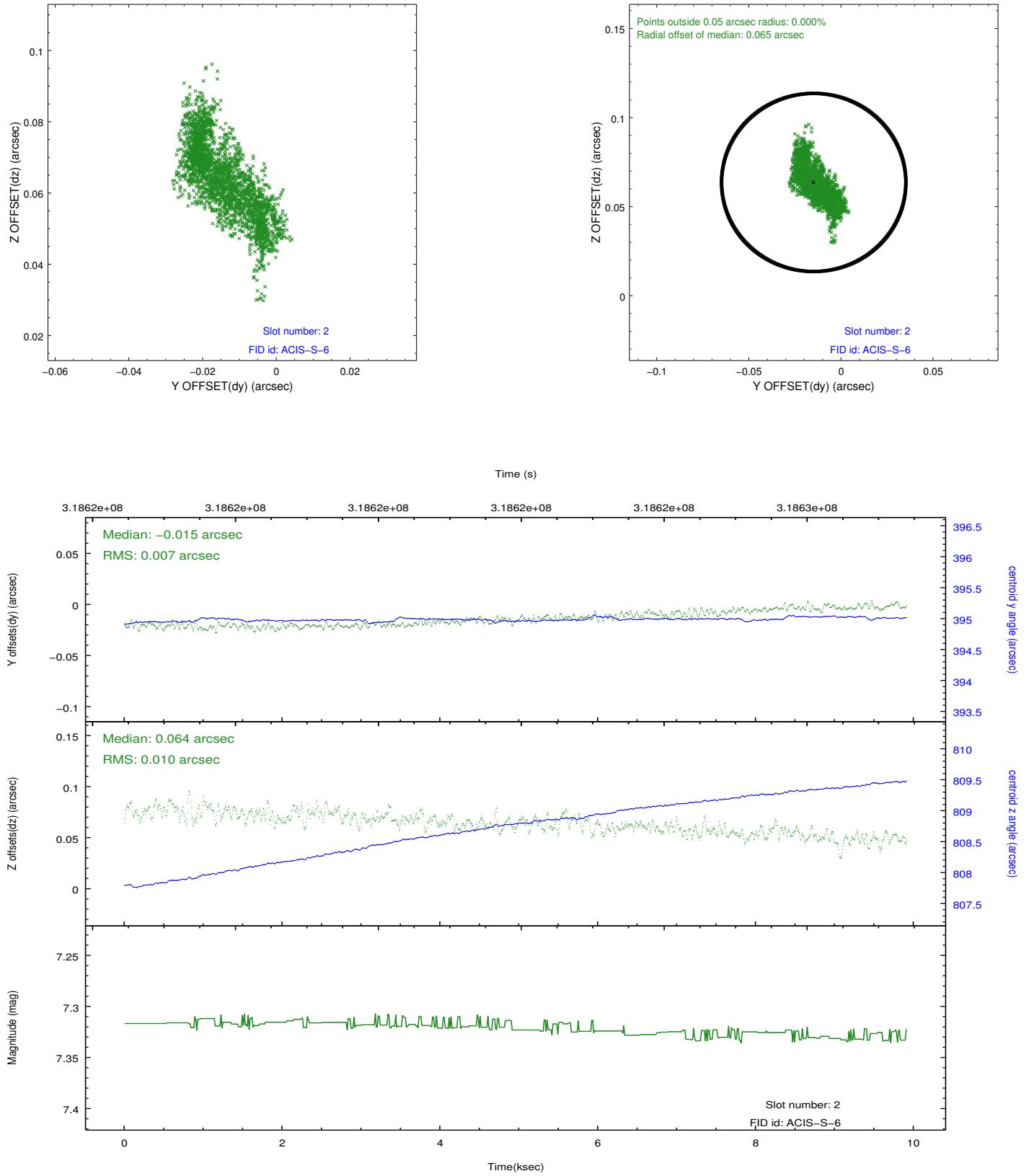
2.5.1 Slot 0



2.5.2 Slot 1



2.5.3 Slot 2



A Summary

A.1 Status

V&V Scientist	Beth Sundheim
V&V Date (YYYY-MM-DD)	2012.05.11
V&V Edition	1
V&V Disposition and Status	OK
V&V Charge Time	9.90719996

A.2 Comments