

# V&V Reference Report

## L2 ASCDS Version : 8.4.4

Observation 9804 - L2 Version 2  
Chandra X-Ray Center

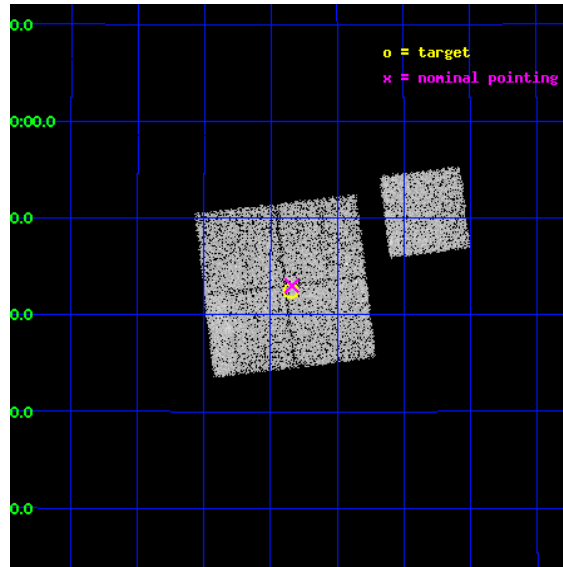
L2 Processing Date : May 7 2012

## Contents

<b>1</b>	<b>Front</b>	<b>2</b>
<b>2</b>	<b>OBI</b>	<b>3</b>
2.1	OBI . . . . .	3
2.1.1	Images . . . . .	3
2.1.2	Bias . . . . .	3
2.1.3	Parameters . . . . .	4
2.1.4	Events . . . . .	4
2.2	Compared Parameters . . . . .	5
2.3	Aspect . . . . .	6
2.4	Star Slots . . . . .	9
2.4.1	Slot 3 . . . . .	9
2.4.2	Slot 4 . . . . .	10
2.4.3	Slot 5 . . . . .	11
2.4.4	Slot 6 . . . . .	12
2.4.5	Slot 7 . . . . .	13
2.5	FID Slots . . . . .	14
2.5.1	Slot 0 . . . . .	14
2.5.2	Slot 1 . . . . .	15
2.5.3	Slot 2 . . . . .	16
<b>A</b>	<b>Summary</b>	<b>17</b>
A.1	Status . . . . .	17
A.2	Comments . . . . .	17

# 1 Front

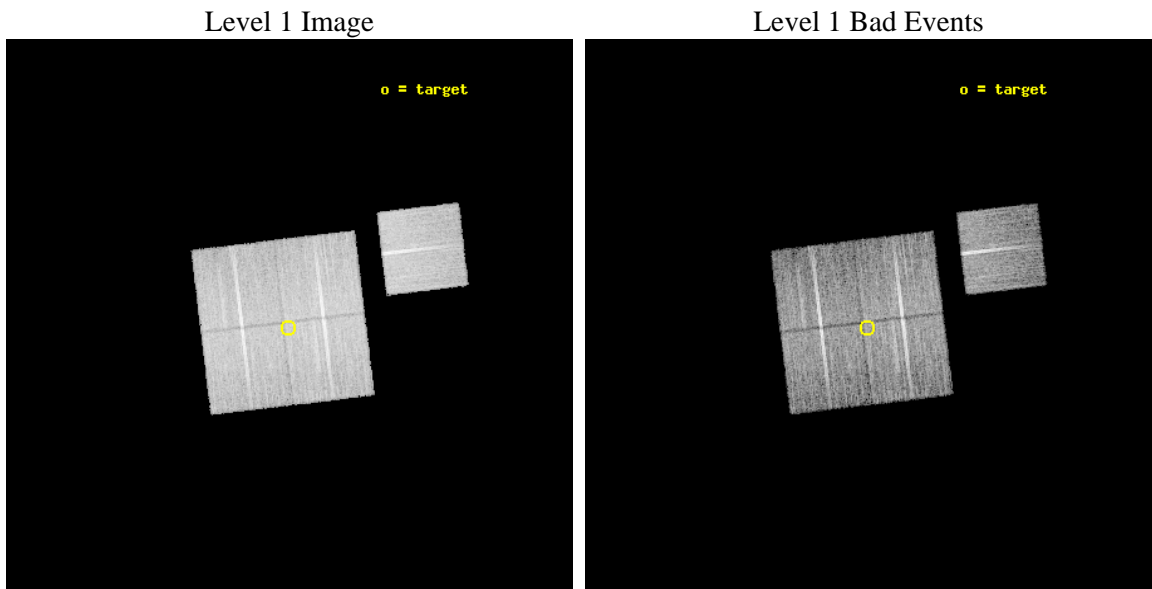
seq_num	800652	Sequence number
obs_id	9804	Observation id
title	A Complete Baryon Census in a Nearby Galaxy Group	Proposal title
observer	Dr. John Mulchaey	Principal investigator
object	NGC2563-P11	Source name
dtcycle	0	&#160
cycle	P	events from which exps? Prim/Second/Both
ra_targ	124.711667	Observer's specified target RA [deg]
dec_targ	21.708639	Observer's specified target Dec [deg]
ra_nom	124.71005959738	Nominal RA [deg]
dec_nom	21.716564622361	Nominal Dec [deg]
roll_nom	83.209277479267	Nominal Roll [deg]
revision	2	Processing version of data
ontime	11823.359110594	Sum of GTIs [s]
livetime	11668.878219584	Livetime [s]
ontime0	11820.218090534	Sum of GTIs [s]
ontime1	11823.359090686	Sum of GTIs [s]
ontime2	11823.359150529	Sum of GTIs [s]
ontime3	11823.359110594	Sum of GTIs [s]
ontime6	11820.218110383	Sum of GTIs [s]
l2events	40804	Number of level 2 events



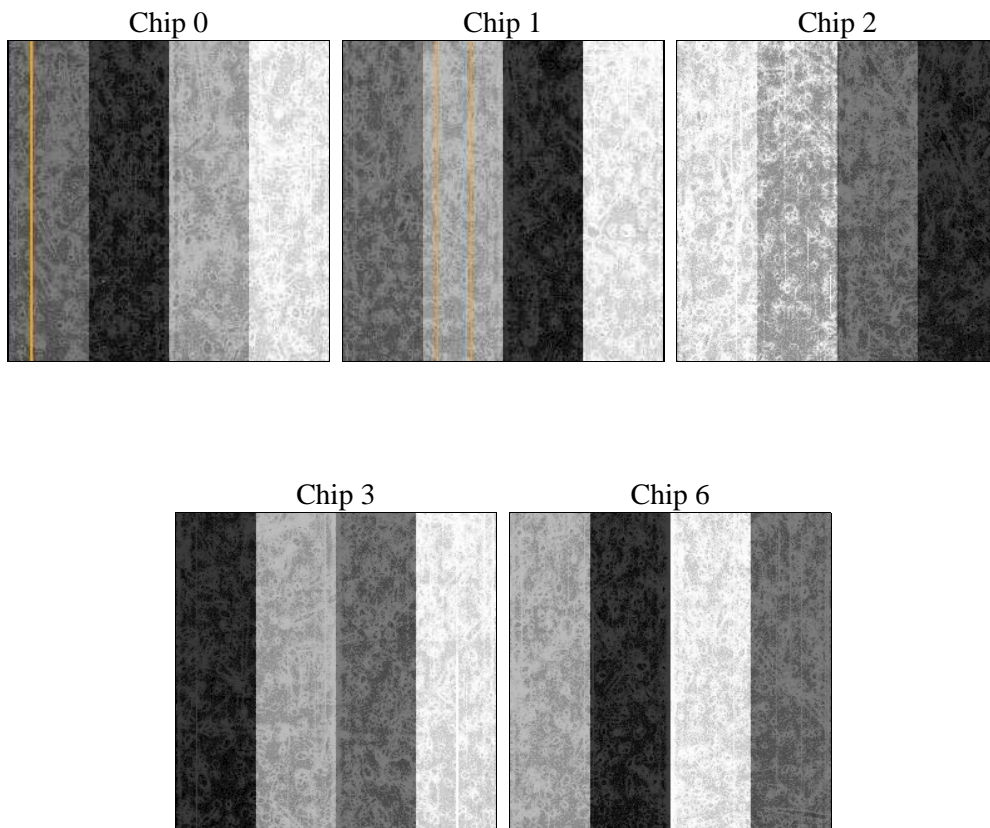
## 2 OBI

### 2.1 OBI

#### 2.1.1 Images



#### 2.1.2 Bias



### 2.1.3 Parameters

obi_num	0	Obi number	sched_exp_time	11700.000000	[s] Scheduled observation exposure time
ascdsver	8.4.4	Processing system revision	ontime	11823.359110594	Sum of GTIs [s]
caldsver	4.4.9	&#160	ontime0	11820.218090534	Sum of GTIs [s]
date	2012-05-07T15:04:53	Date and time of file creation	ontime1	11823.359090686	Sum of GTIs [s]
revision	2	Processing version of data	ontime2	11823.359150529	Sum of GTIs [s]
			ontime3	11823.359110594	Sum of GTIs [s]
			ontime6	11820.218110383	Sum of GTIs [s]
			l1events	504681	Number of level 1 events

### 2.1.4 Events

	ccd 0	ccd 1	ccd 2	ccd 3	ccd 6
level 1 events	96192	95925	107380	104592	100592
rejected events	86620	85084	97703	95593	90540
rejected %	90%	88%	90%	91%	90%

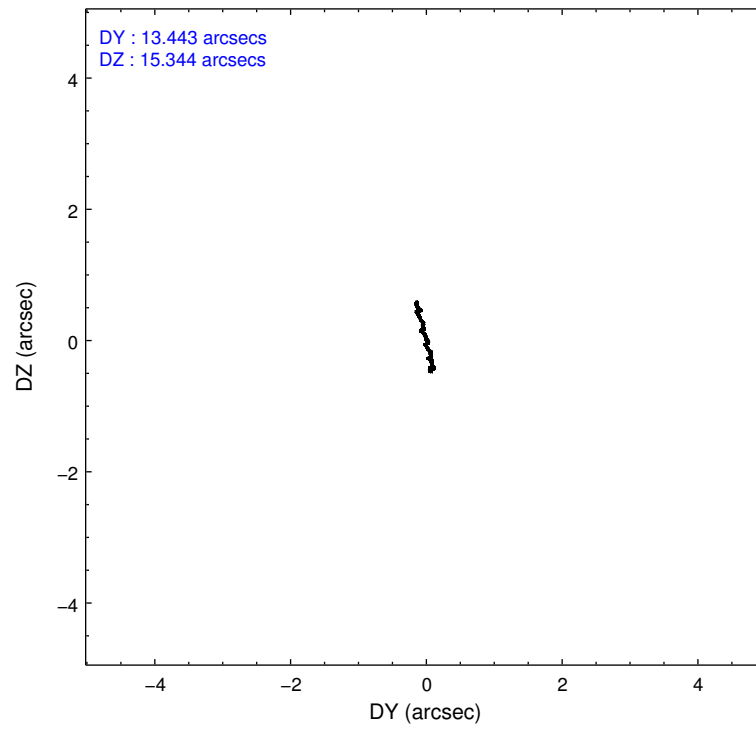
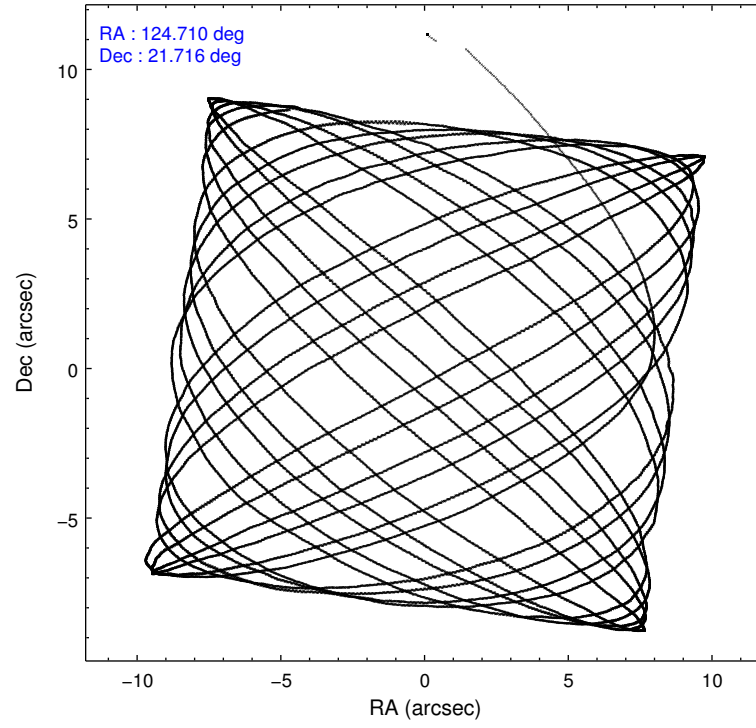
	ccd 0	ccd 1	ccd 2	ccd 3	ccd 6
grade 0 events	3407	4118	3630	3293	3611
	3%	4%	3%	3%	3%
grade 1 events	48	56	58	63	37
	0%	0%	0%	0%	0%
grade 2 events	2485	2526	2475	2048	2283
	2%	2%	2%	1%	2%
grade 3 events	1123	1232	1079	1114	1157
	1%	1%	1%	1%	1%
grade 4 events	1086	1205	1080	1082	1129
	1%	1%	1%	1%	1%
grade 5 events	3530	3888	3325	4136	3945
	3%	4%	3%	3%	3%
grade 6 events	1929	2311	1871	1931	2361
	2%	2%	1%	1%	2%
grade 7 events	82584	80589	93862	90925	86069
	85%	84%	87%	86%	85%

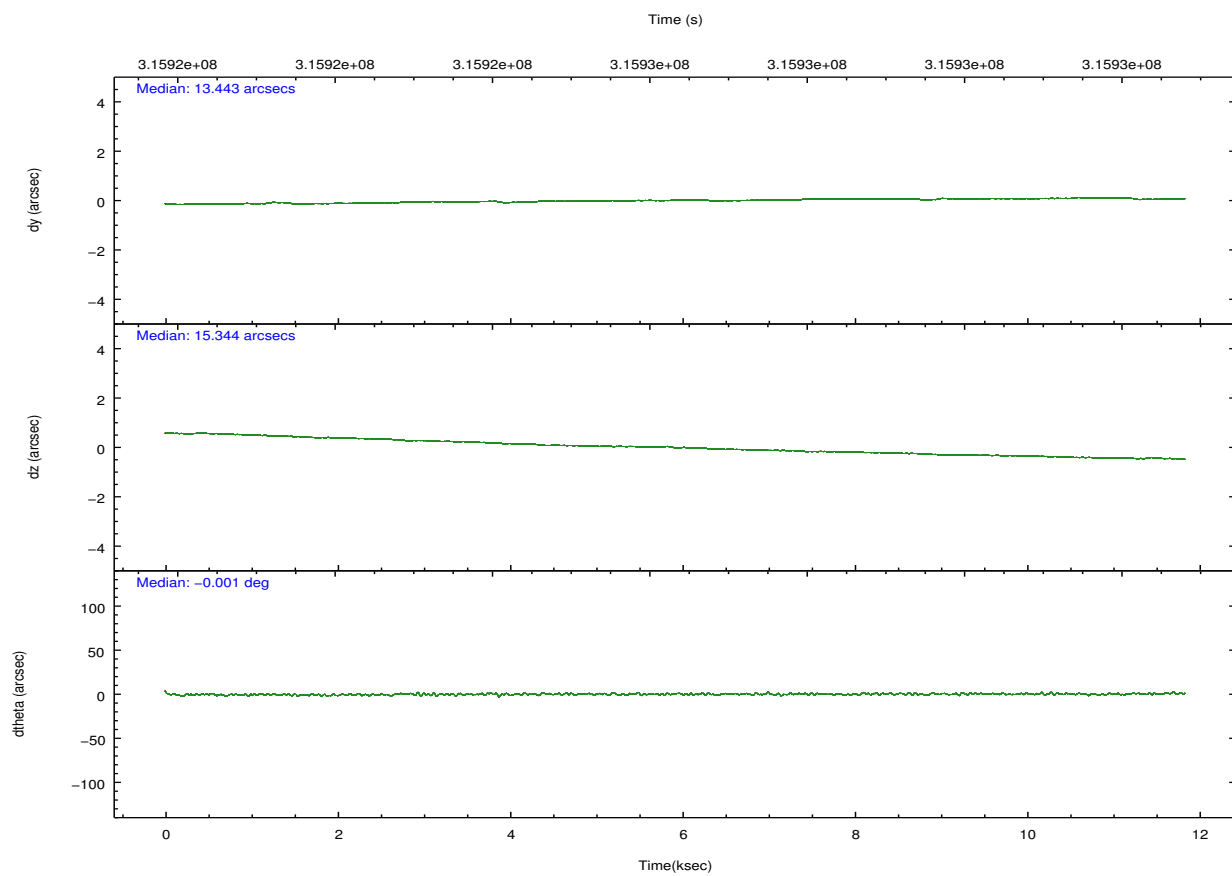
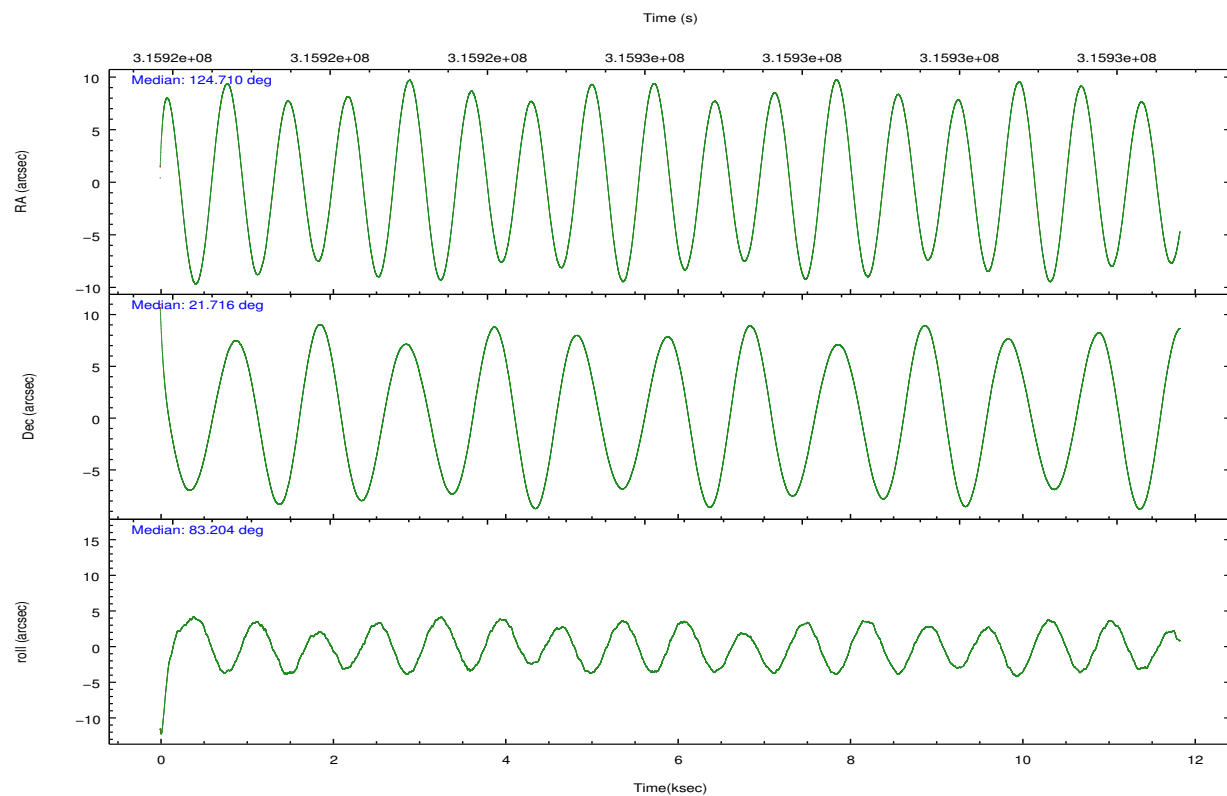


## 2.2 Compared Parameters

Parameter	Planned	Actual	Parameter	Planned	Actual
Instrument	ACIS	ACIS	Obspar format version number	7	7
Detector	ACIS-01236	ACIS-01236	Obspar file type	PREDICTED	ACTUAL
Grating	NONE	NONE	Obspar update status	NONE	UPDATED
Data mode	VFAINT	VFAINT	CCD I0 on	Y	Y
Observation mode	POINTING	POINTING	CCD I1 on	Y	Y
[deg] Pointing RA	124.721853	124.7100595973802	CCD I2 on	Y	Y
[deg] Pointing Dec	21.691360	21.71656462236058	CCD I3 on	Y	Y
[deg] Pointing Roll	82.996232	83.20927747926658	CCD S0 on	N	N
[mm] SIM focus pos	-0.782348	-0.7809083437167272	CCD S1 on	N	N
[mm] SIM defocus	0	0.001439871863259334	CCD S2 on	O1	Y
[mm] SIM translation stage pos	-233.592463	-233.5874344608287	CCD S3 on	N	N
[mm] SIM translation stage offset	0	-0.005018542100998502	CCD S4 on	N	N
[s] Observation start time (MET)	315920538.184000	315919276.3841	CCD S5 on	N	N
Observation start date	2008-01-05T11:41:13	2008-01-05T11:21:16	Number of optional ACIS chips dropped	0	0
[s] Observation end time (MET)	315932238.184000	315933503.89728	On-chip summing requested	N	N
Observation end date	2008-01-05T14:56:13	2008-01-05T15:18:23	Subarray requested	NONE	NONE
Read mode	TIMED	TIMED	Alternating exposures requested	N	N
			[s] Primary exposure time	0.000000	3.1

## 2.3 Aspect



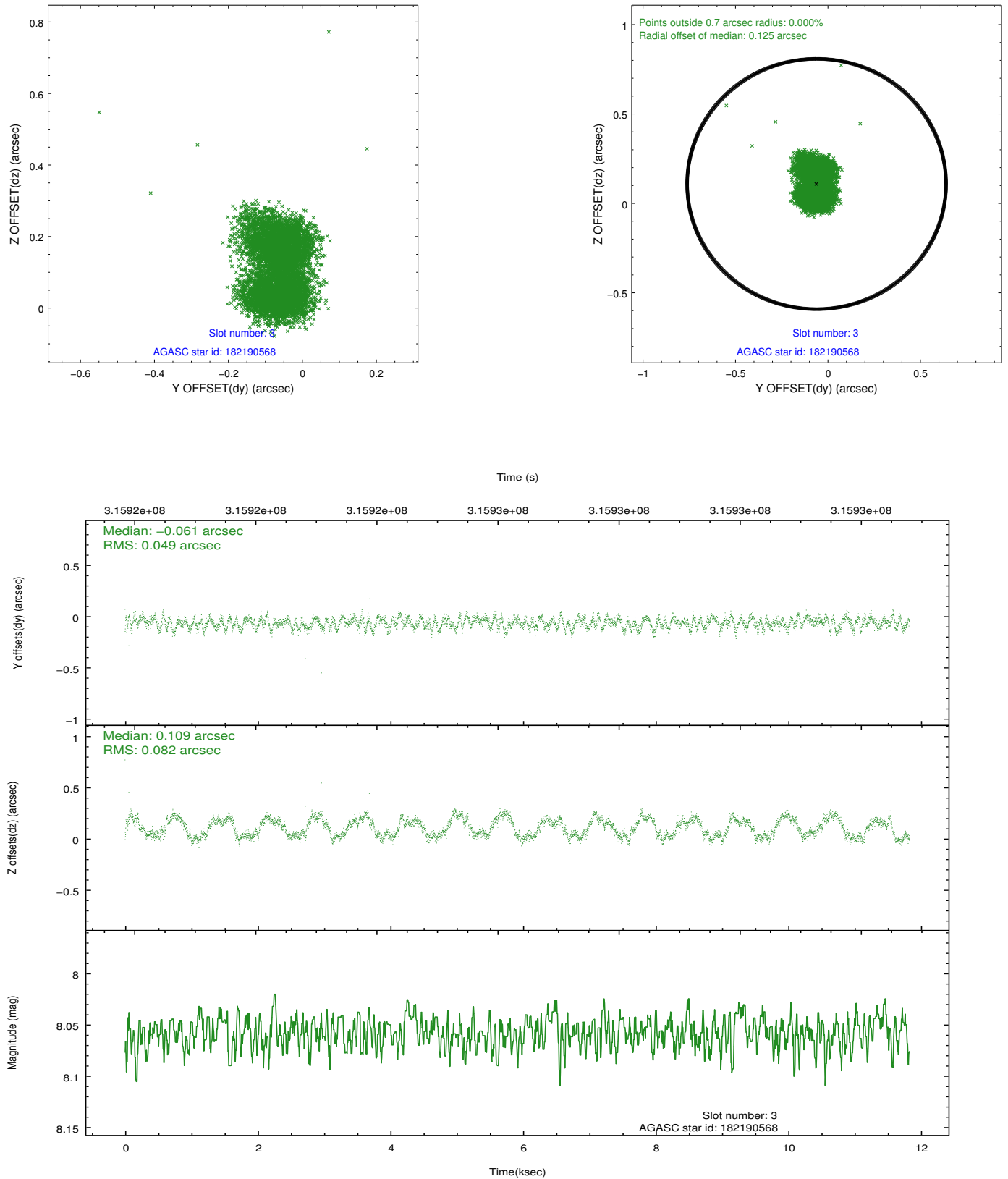


### Slot Statistics

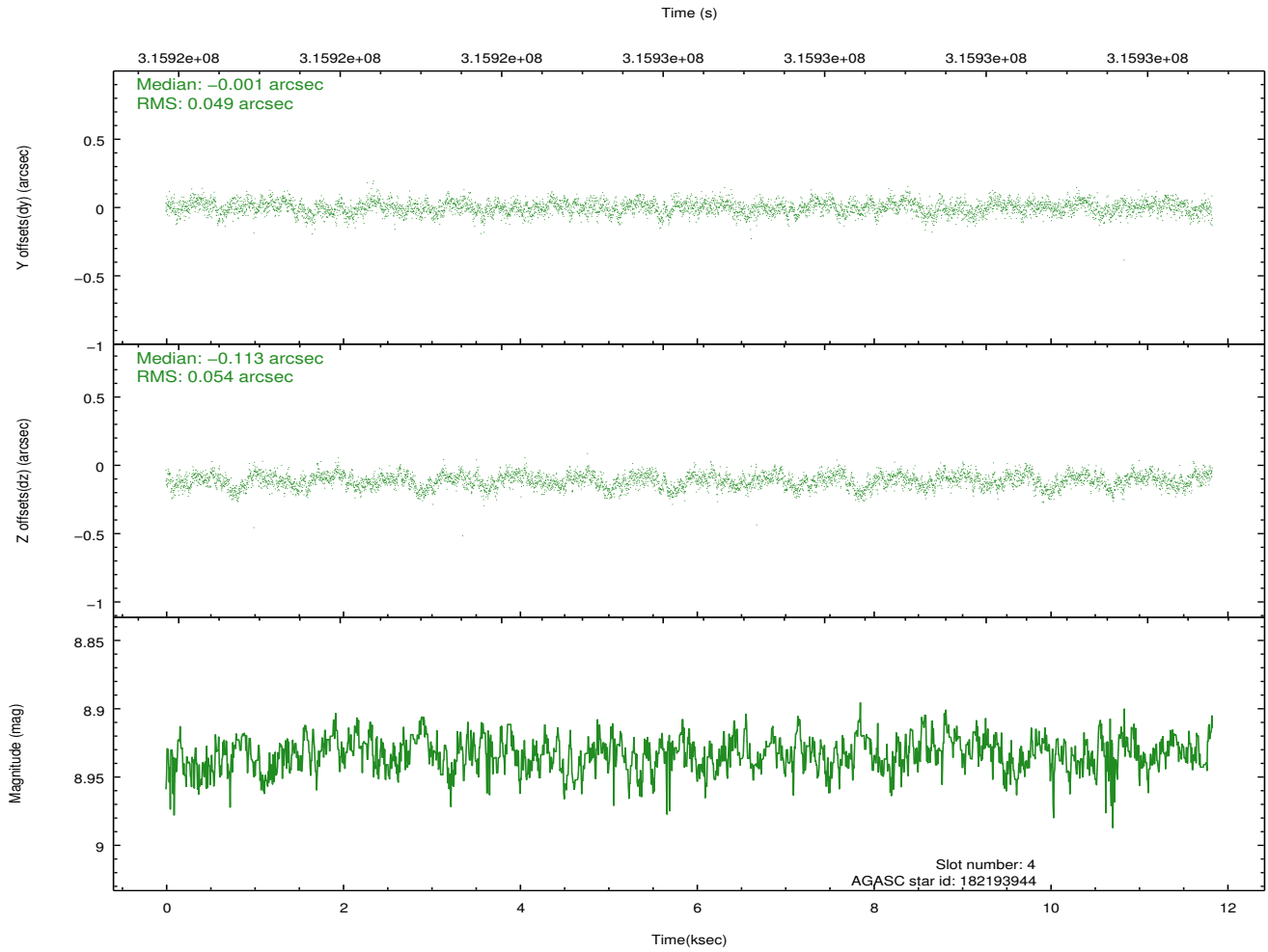
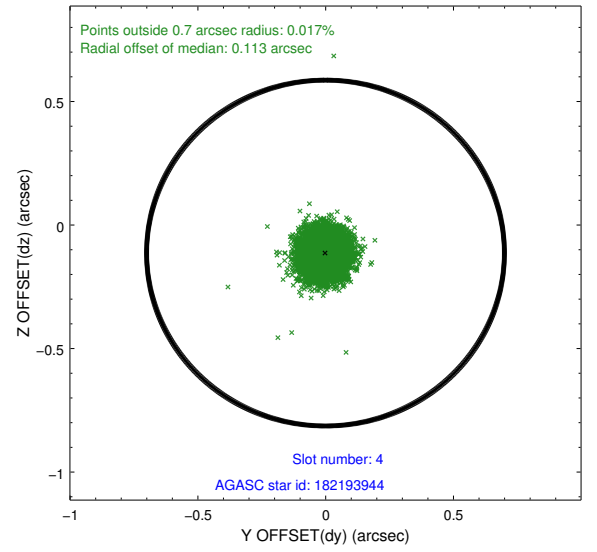
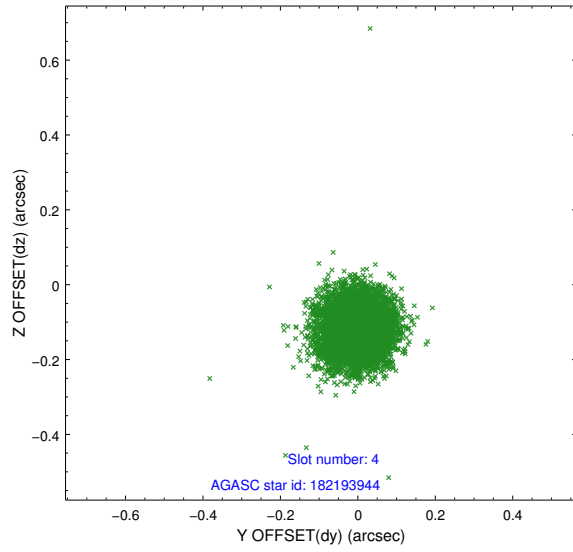
slot	status	id	mag	n_pts	med_dy	med_dz	dr1	dr2	ra	dec	mean_y	mean_z
0	FID	ACIS-I-2	7.14	2886	-0.167	-0.101	0.008	0.014	0.000000	0.000000	-768.28	-845.42
1	FID	ACIS-I-4	7.15	2885	0.096	0.088	0.008	0.013	0.000000	0.000000	2145.87	1060.69
2	FID	ACIS-I-6	7.23	2885	-0.028	0.077	0.011	0.019	0.000000	0.000000	392.51	1703.37
3	GUIDE	182190568	8.06	5769	-0.061	0.109	0.105	0.149	125.270475	22.031708	1442.85	-1667.04
4	GUIDE	182193944	8.93	5767	-0.001	-0.113	0.076	0.122	124.609095	22.220430	1845.10	605.30
5	GUIDE	182202936	7.82	5770	0.020	0.059	0.063	0.102	124.849962	21.257255	-1498.02	-617.26
6	GUIDE	182203576	7.54	5771	0.006	-0.178	0.055	0.089	124.189461	21.231017	-1859.94	1571.33
7	GUIDE	182201632	7.64	5770	0.034	0.123	0.060	0.092	124.727284	21.494130	-702.60	-104.21

## 2.4 Star Slots

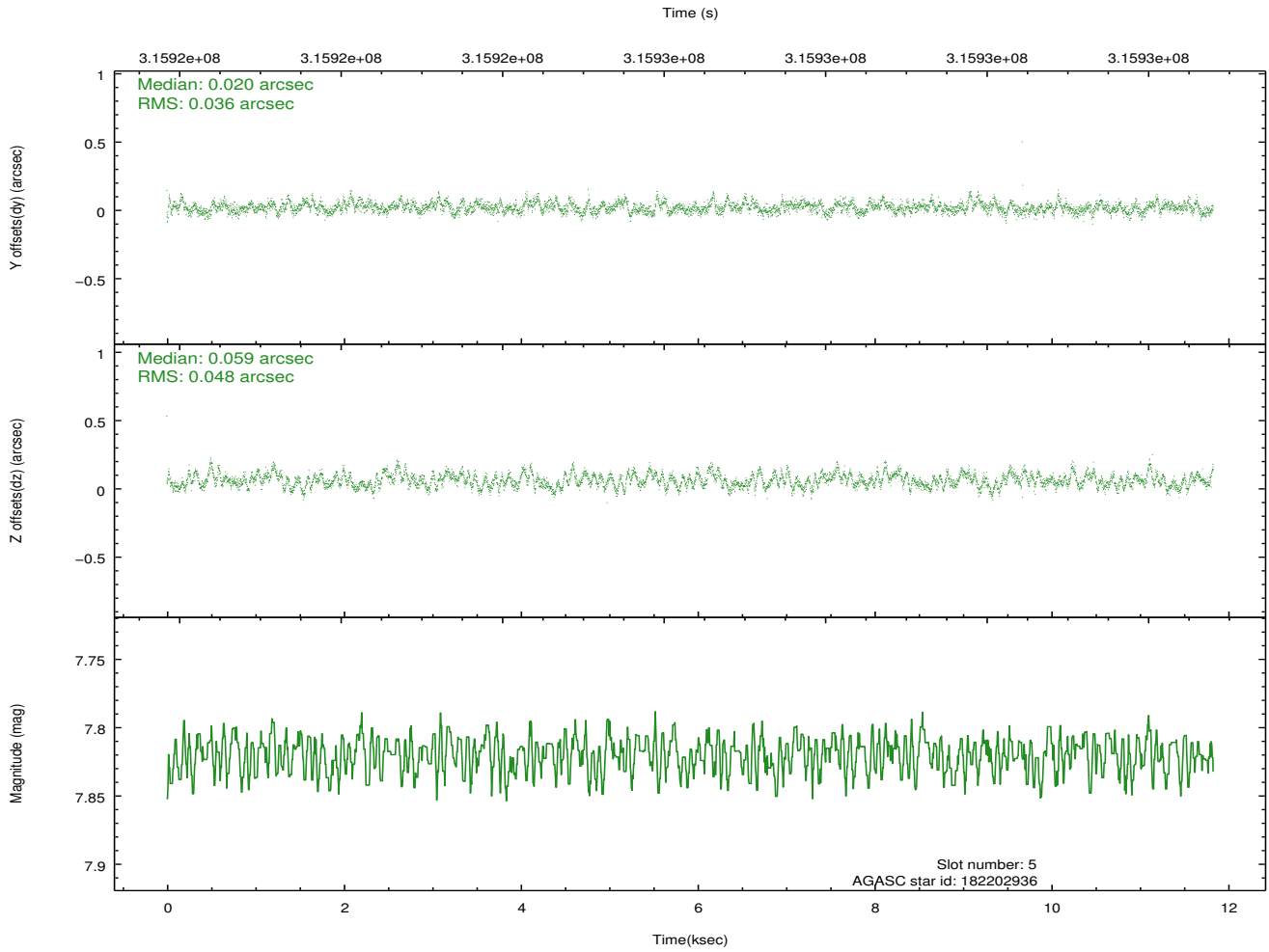
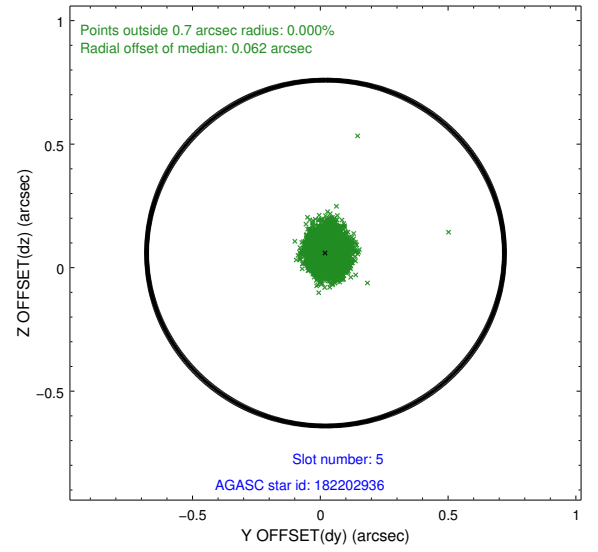
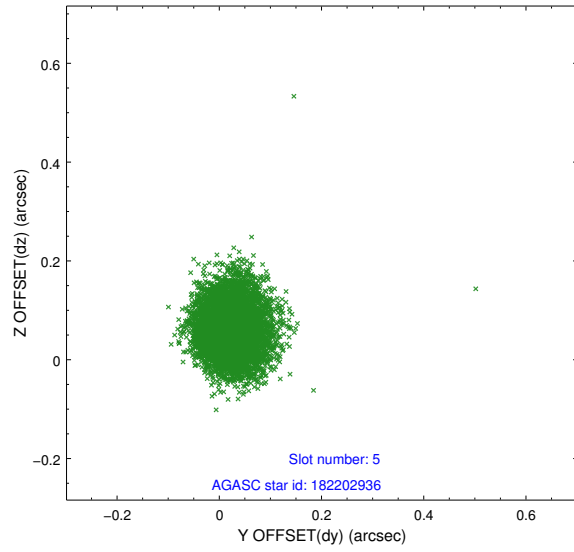
### 2.4.1 Slot 3



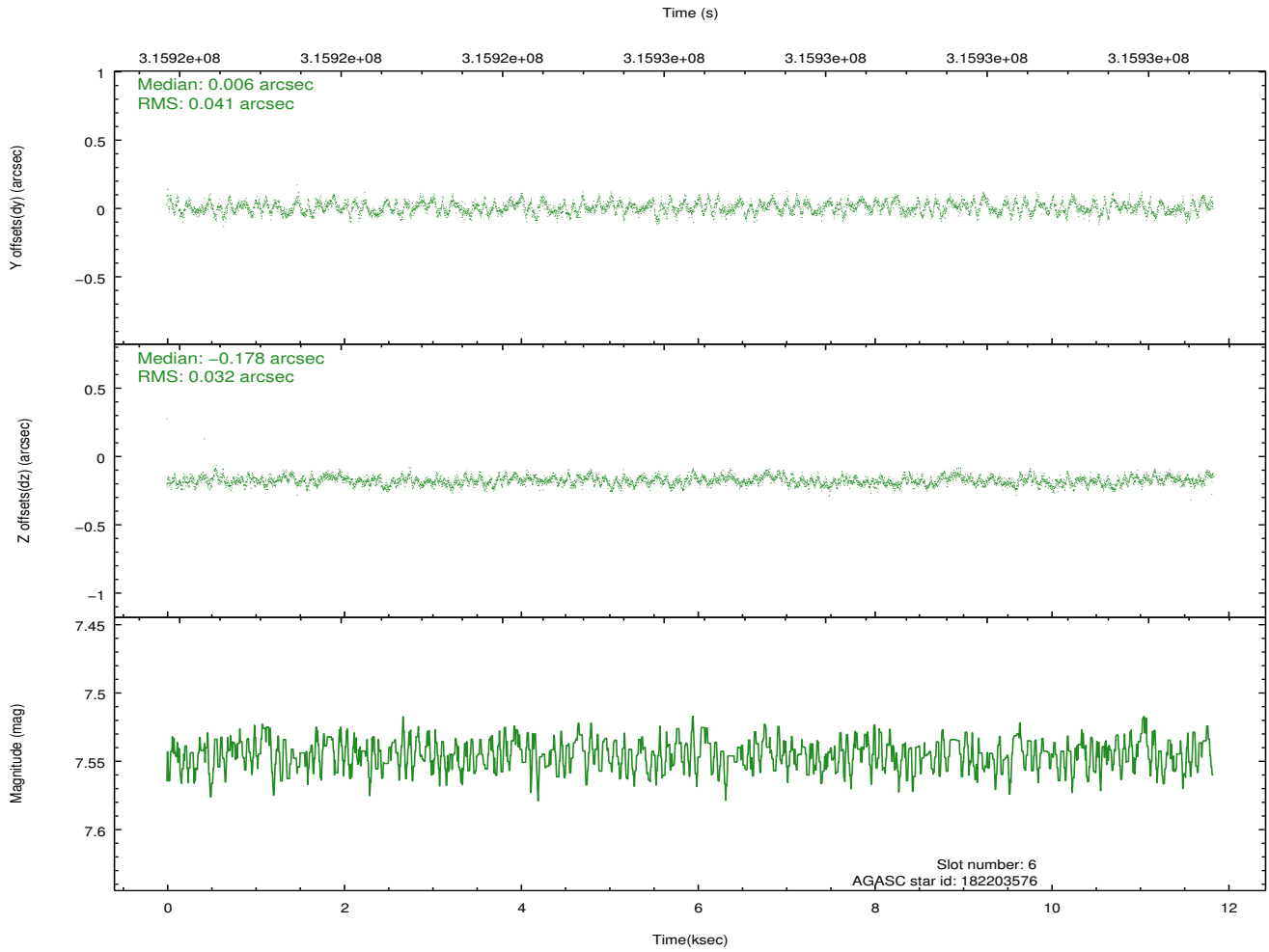
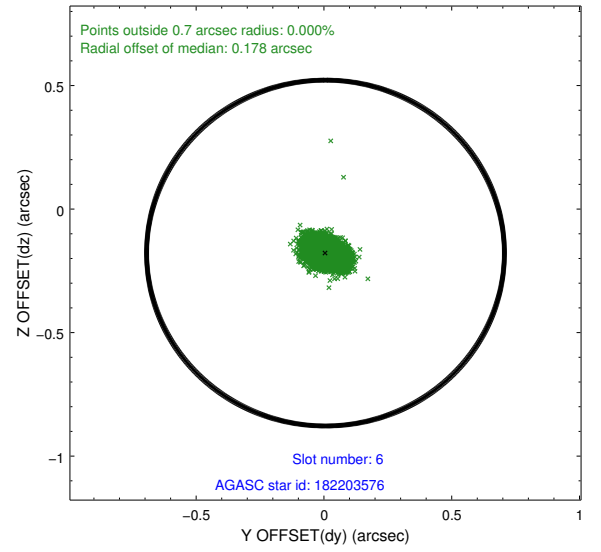
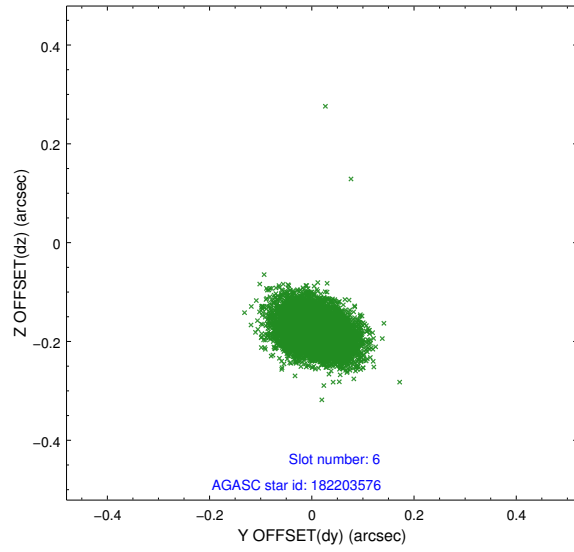
## 2.4.2 Slot 4



### 2.4.3 Slot 5

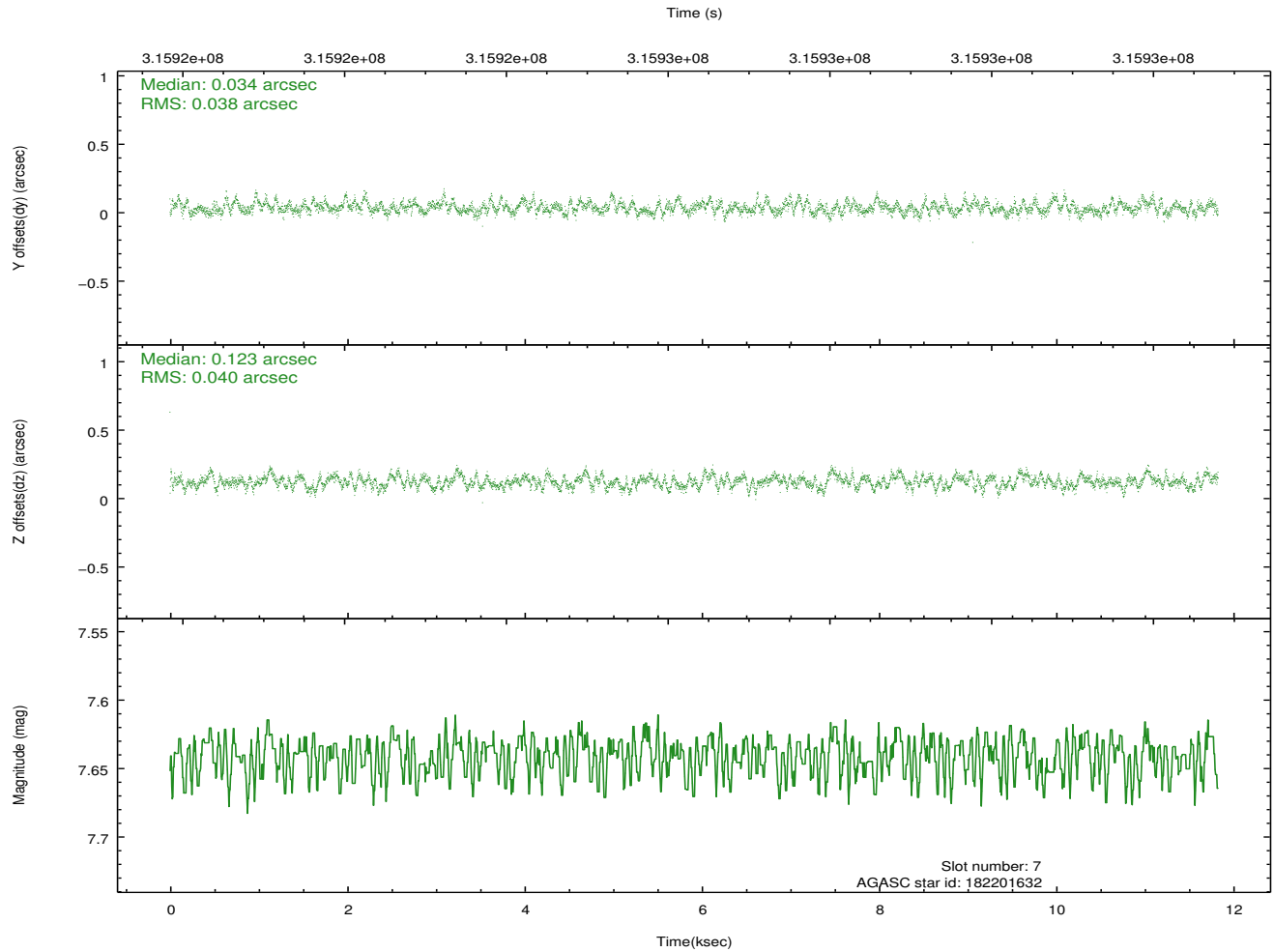
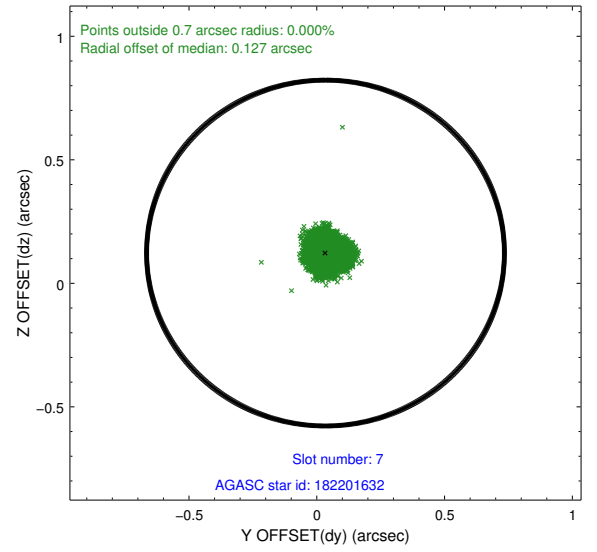
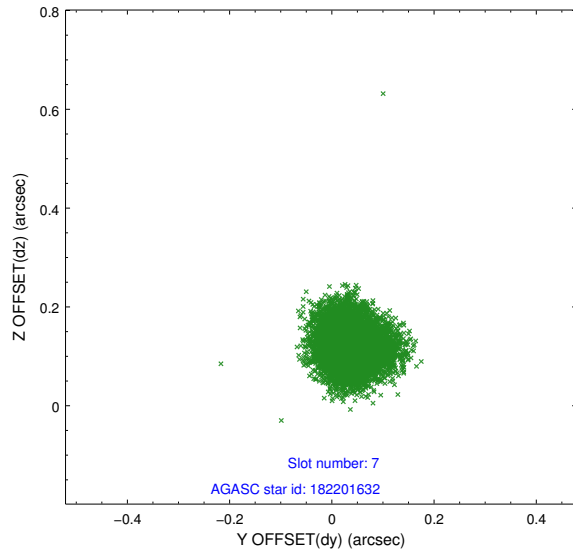


## 2.4.4 Slot 6



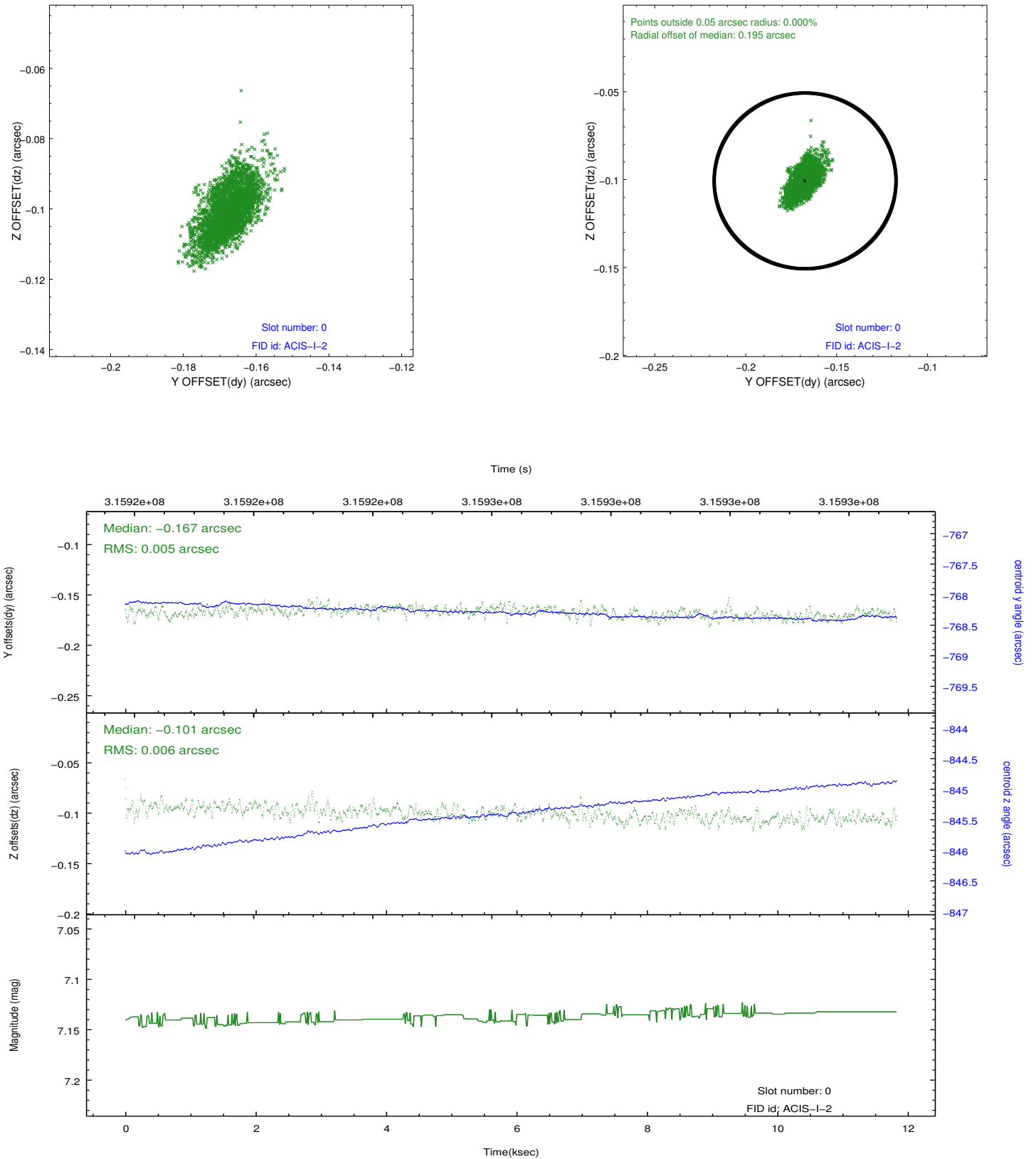


## 2.4.5 Slot 7

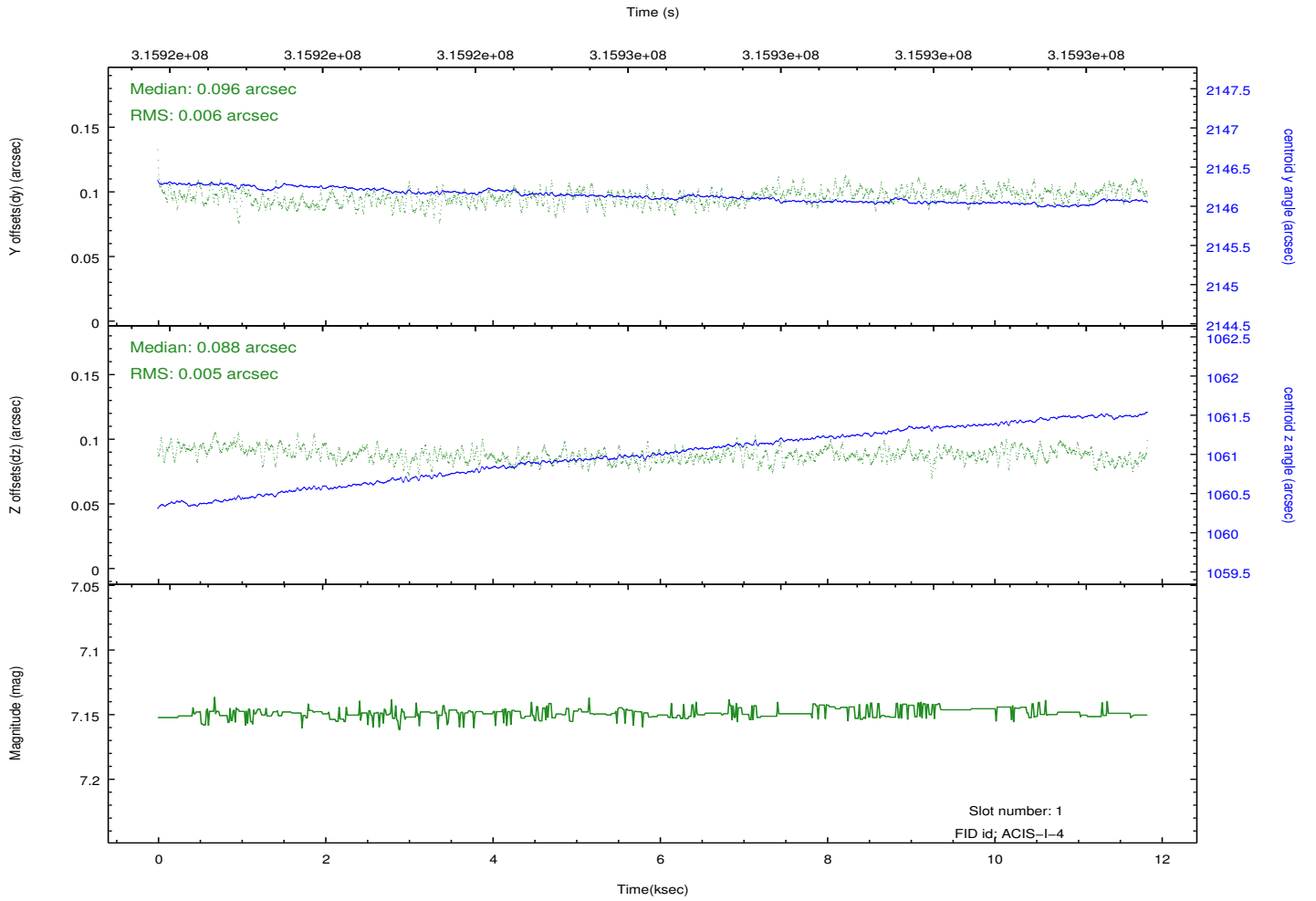
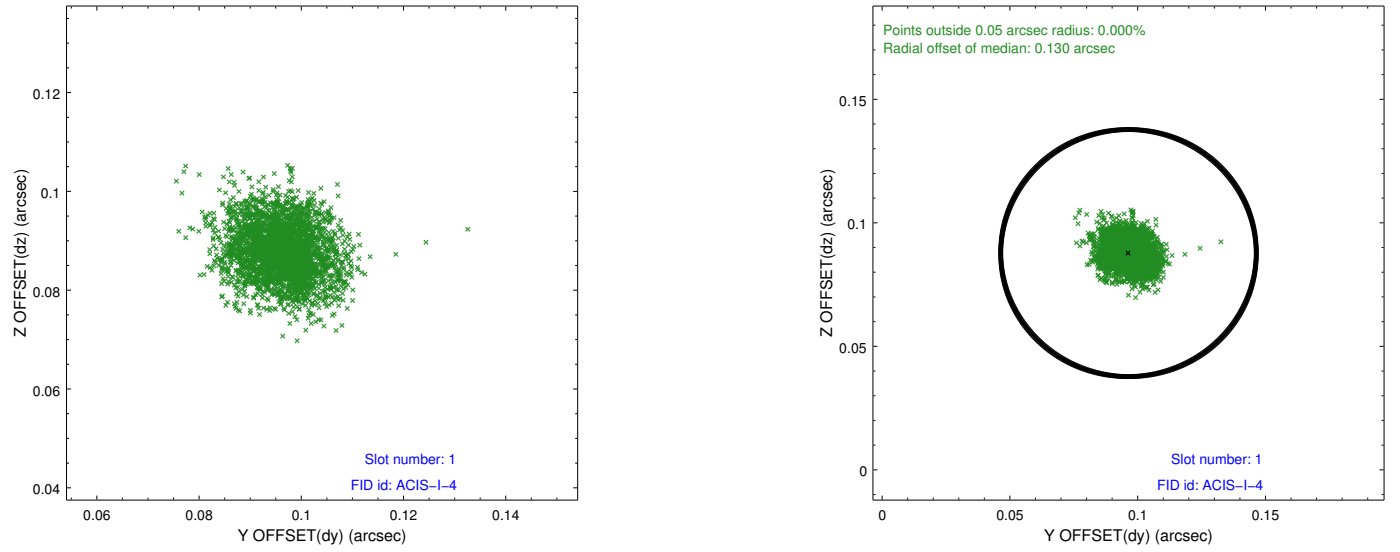


## 2.5 FID Slots

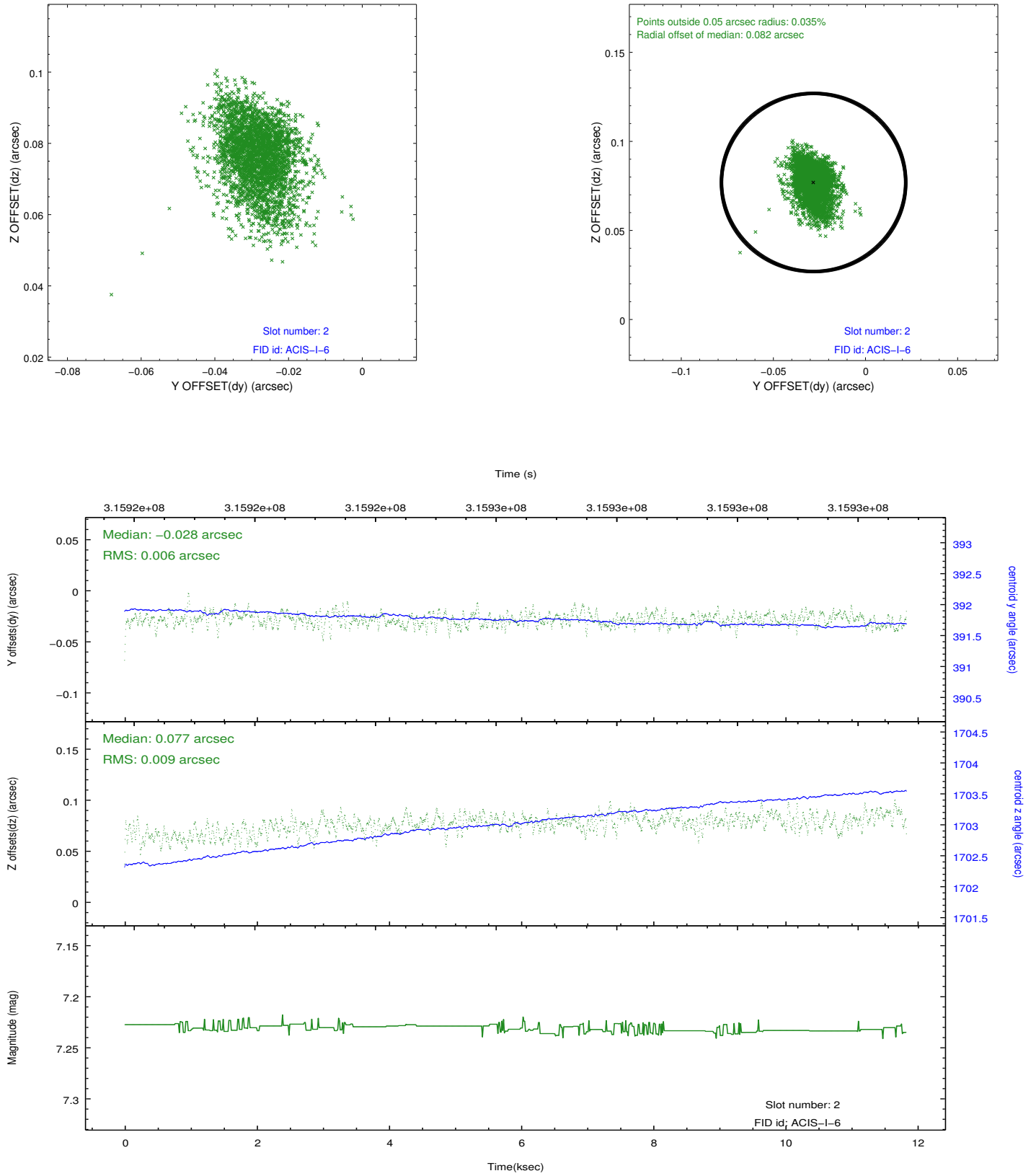
### 2.5.1 Slot 0



## 2.5.2 Slot 1



### 2.5.3 Slot 2



## A Summary

### A.1 Status

V&V Scientist	Beth Sundheim
V&V Date (YYYY-MM-DD)	2012.05.09
V&V Edition	1
V&V Disposition and Status	OK
V&V Charge Time	11.8233591

### A.2 Comments