

# V&V Reference Report

## L2 ASCDS Version : 8.4.4

Observation 9414 - L2 Version 2  
Chandra X-Ray Center

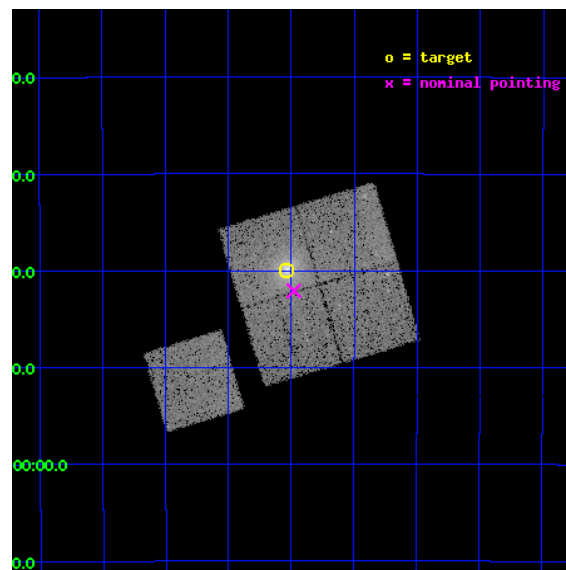
L2 Processing Date : May 11 2012

## Contents

<b>1</b>	<b>Front</b>	<b>2</b>
<b>2</b>	<b>OBI</b>	<b>3</b>
2.1	OBI . . . . .	3
2.1.1	Images . . . . .	3
2.1.2	Bias . . . . .	3
2.1.3	Parameters . . . . .	4
2.1.4	Events . . . . .	4
2.2	Compared Parameters . . . . .	5
2.3	Aspect . . . . .	6
2.4	Star Slots . . . . .	9
2.4.1	Slot 3 . . . . .	9
2.4.2	Slot 4 . . . . .	10
2.4.3	Slot 5 . . . . .	11
2.4.4	Slot 6 . . . . .	12
2.4.5	Slot 7 . . . . .	13
2.5	FID Slots . . . . .	14
2.5.1	Slot 0 . . . . .	14
2.5.2	Slot 1 . . . . .	15
2.5.3	Slot 2 . . . . .	16
<b>A</b>	<b>Summary</b>	<b>17</b>
A.1	Status . . . . .	17
A.2	Comments . . . . .	17

# 1 Front

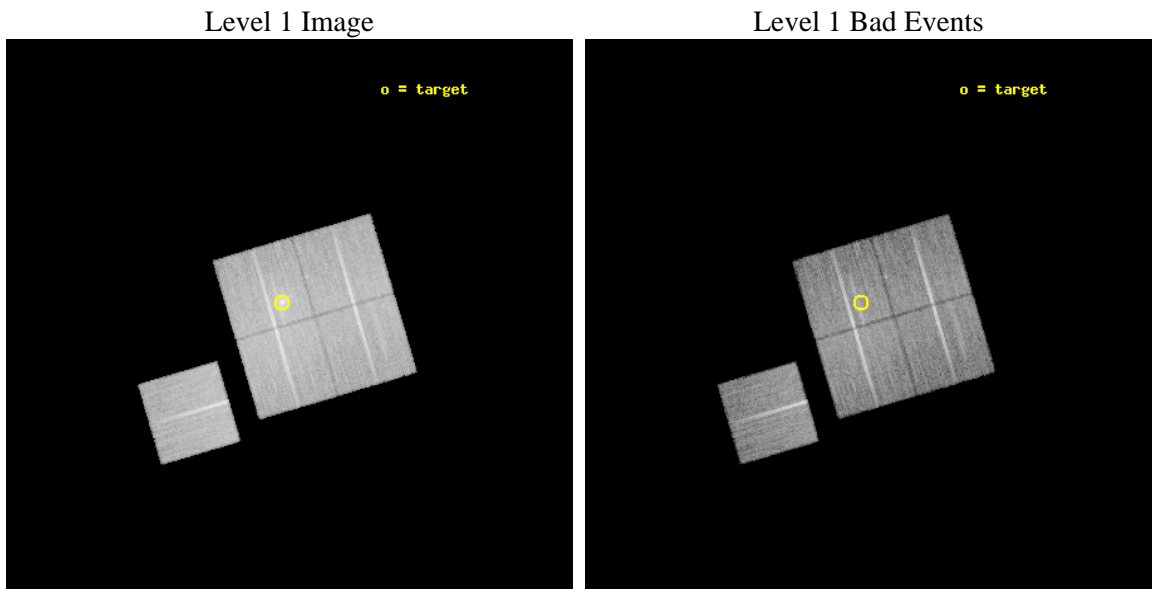
seq_num	800750	Sequence number
obs_id	9414	Observation id
title	LoCuSS: Cluster Mass Comparison with Chandra and HST -- Observational Discrepancy or Agreement in the New Millennium?	Proposal title
observer	Dr Graham Smith	Principal investigator
object	RXCJ0307.0-2840	Source name
dtcycle	0	&#160
cycle	P	events from which exps? Prim/Second/Both
ra_targ	46.759125	Observer's specified target RA [deg]
dec_targ	-28.665806	Observer's specified target Dec [deg]
ra_nom	46.744845910084	Nominal RA [deg]
dec_nom	-28.70142248751	Nominal Dec [deg]
roll_nom	253.46758418425	Nominal Roll [deg]
revision	2	Processing version of data
ontime	19157.918166935	Sum of GTIs [s]
livetime	18907.60586223	Livetime [s]
ontime0	19161.059157133	Sum of GTIs [s]
ontime1	19157.918166935	Sum of GTIs [s]
ontime2	19157.918186903	Sum of GTIs [s]
ontime3	19157.918166935	Sum of GTIs [s]
ontime6	19161.059157133	Sum of GTIs [s]
l2events	76008	Number of level 2 events



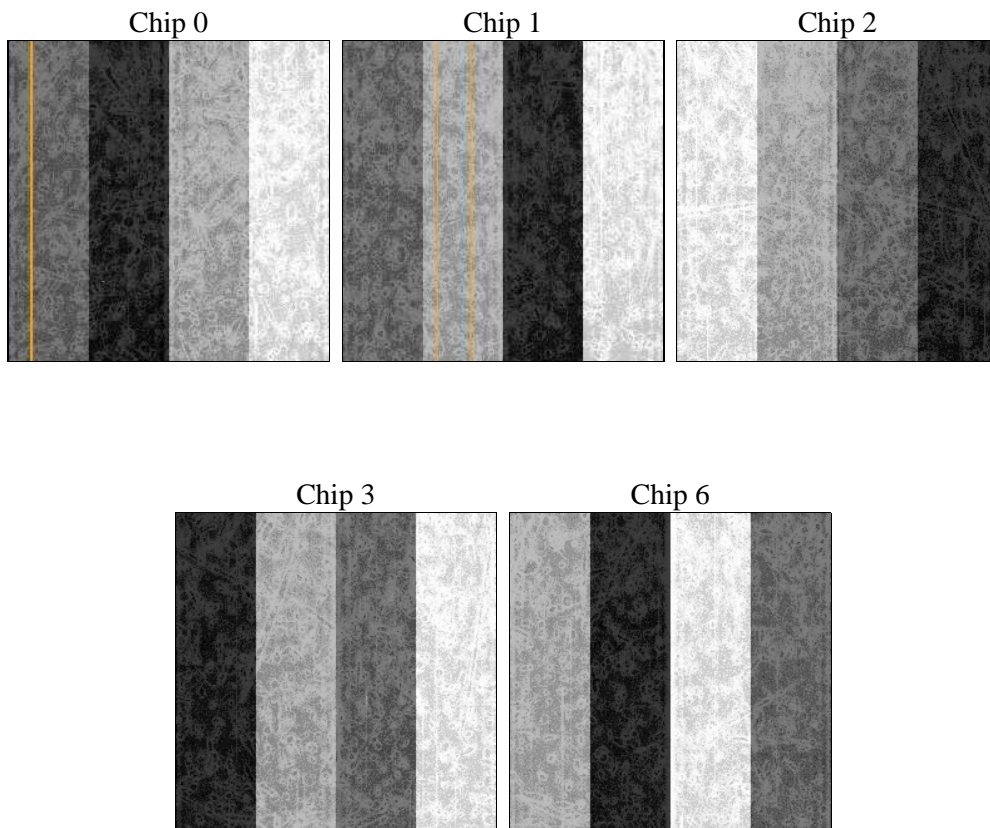
## 2 OBI

### 2.1 OBI

#### 2.1.1 Images



#### 2.1.2 Bias



### 2.1.3 Parameters

obi_num	0	Obi number	sched_exp_time	19000.000000	[s] Scheduled observation exposure time
ascdsver	8.4.4	Processing system revision	ontime	19157.918166935	Sum of GTIs [s]
caldbver	4.4.9	&#160	ontime0	19161.059157133	Sum of GTIs [s]
date	2012-05-11T13:02:50	Date and time of file creation	ontime1	19157.918166935	Sum of GTIs [s]
revision	2	Processing version of data	ontime2	19157.918186903	Sum of GTIs [s]
			ontime3	19157.918166935	Sum of GTIs [s]
			ontime6	19161.059157133	Sum of GTIs [s]
			l1events	746985	Number of level 1 events

### 2.1.4 Events

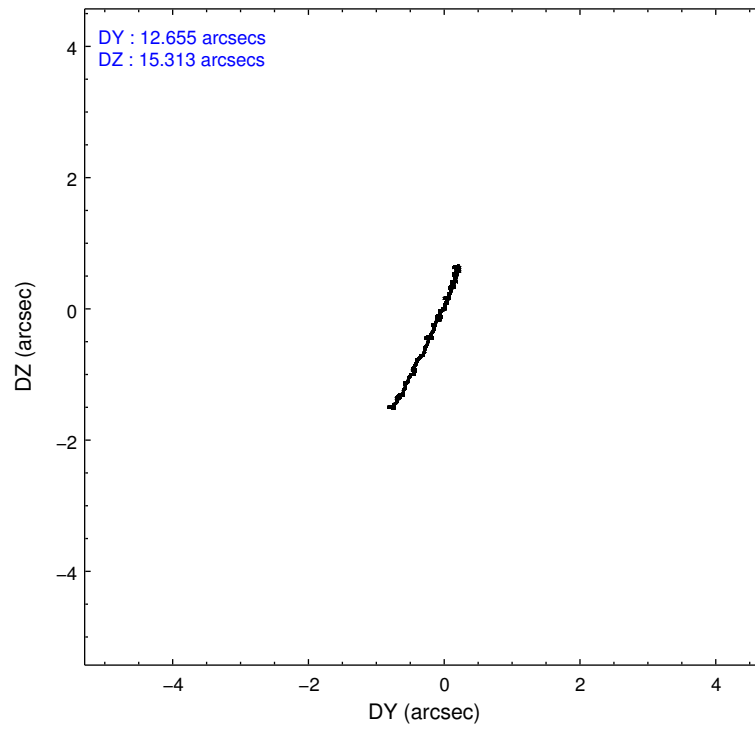
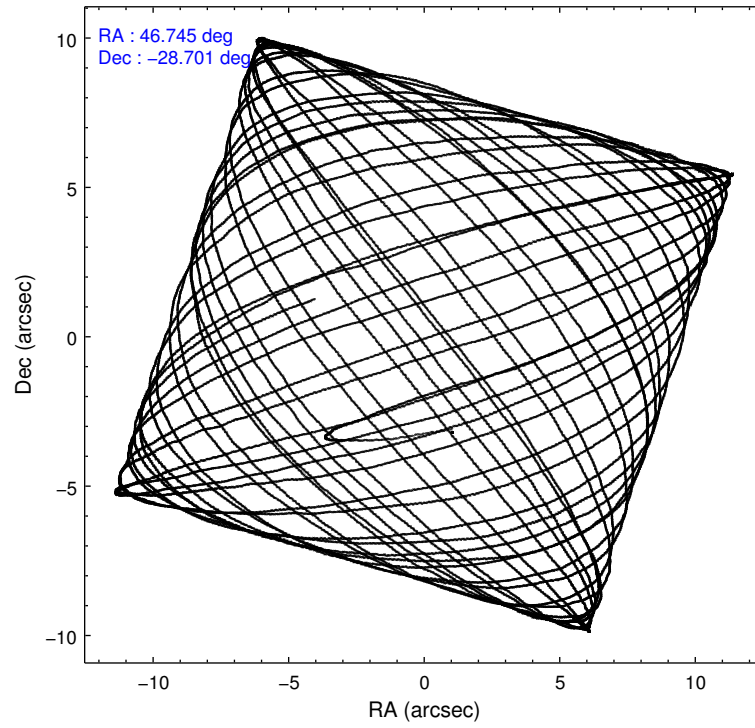
	ccd 0	ccd 1	ccd 2	ccd 3	ccd 6
level 1 events	137218	141967	156893	160361	150546
rejected events	122081	124472	141350	134269	135330
rejected %	88%	87%	90%	83%	89%

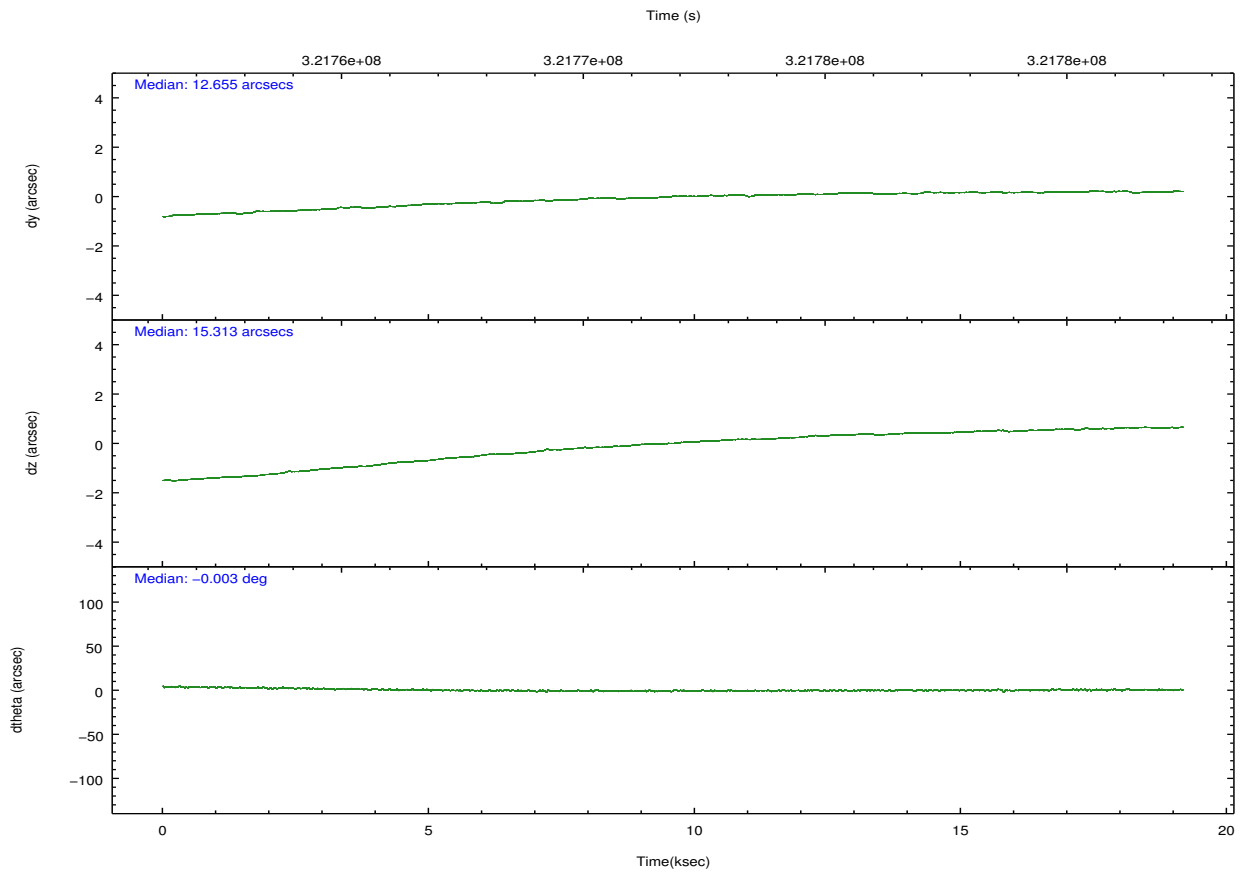
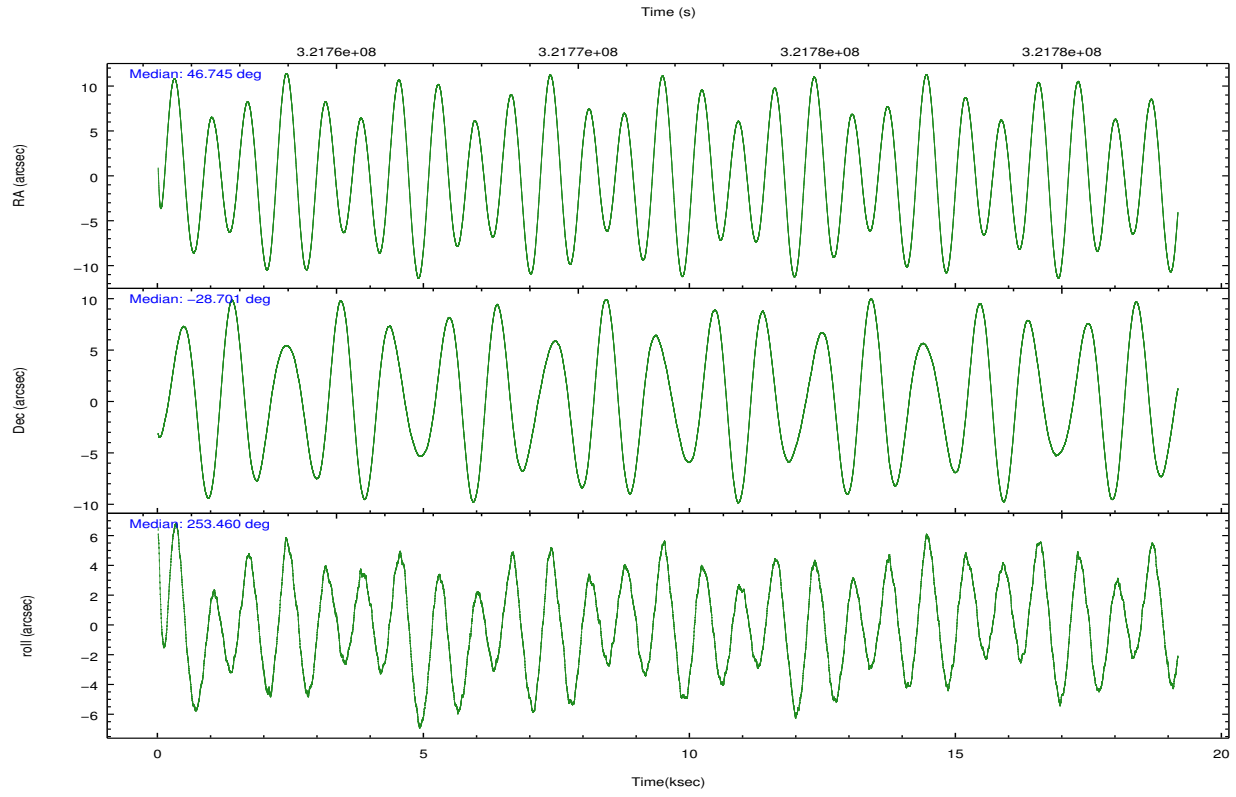
	ccd 0	ccd 1	ccd 2	ccd 3	ccd 6
grade 0 events	5427	6492	5733	14680	5187
	3%	4%	3%	9%	3%
grade 1 events	72	196	91	164	62
	0%	0%	0%	0%	0%
grade 2 events	3567	3910	3835	4334	3327
	2%	2%	2%	2%	2%
grade 3 events	1723	1851	1586	2005	1738
	1%	1%	1%	1%	1%
grade 4 events	1642	1809	1630	1933	1696
	1%	1%	1%	1%	1%
grade 5 events	5374	5942	5183	6282	5972
	3%	4%	3%	3%	3%
grade 6 events	2828	3493	2810	3221	3320
	2%	2%	1%	2%	2%
grade 7 events	116585	118274	136025	127742	129244
	84%	83%	86%	79%	85%

## 2.2 Compared Parameters

Parameter	Planned	Actual	Parameter	Planned	Actual
Instrument	ACIS	ACIS	Obspar format version number	7	7
Detector	ACIS-01236	ACIS-01236	Obspar file type	PREDICTED	ACTUAL
Grating	NONE	NONE	Obspar update status	NONE	UPDATED
Data mode	VFAINT	VFAINT	Number of optional ACIS chips dropped	0	0
Observation mode	POINTING	POINTING	On-chip summing requested	N	N
[deg] Pointing RA	46.737430	46.74484591008384	Subarray requested	NONE	NONE
[deg] Pointing Dec	-28.674694	-28.70142248751029	Alternating exposures requested	N	N
[deg] Pointing Roll	253.255337	253.4675841842468	[s] Primary exposure time	0.000000	3.1
[mm] SIM focus pos	-0.782348	-0.7809083437167272			
[mm] SIM defocus	0	0.001439871863259334			
[mm] SIM translation stage pos	-227.592463	-227.5958210972112			
[mm] SIM translation stage offset	-6	-5.996631905718488			
[s] Observation start time (MET)	321762456.184000	321761440.46757			
Observation start date	2008-03-13T02:26:31	2008-03-13T02:10:40			
[s] Observation end time (MET)	321781456.184000	321782441.18109			
Observation end date	2008-03-13T07:43:11	2008-03-13T08:00:41			
Read mode	TIMED	TIMED			

## 2.3 Aspect



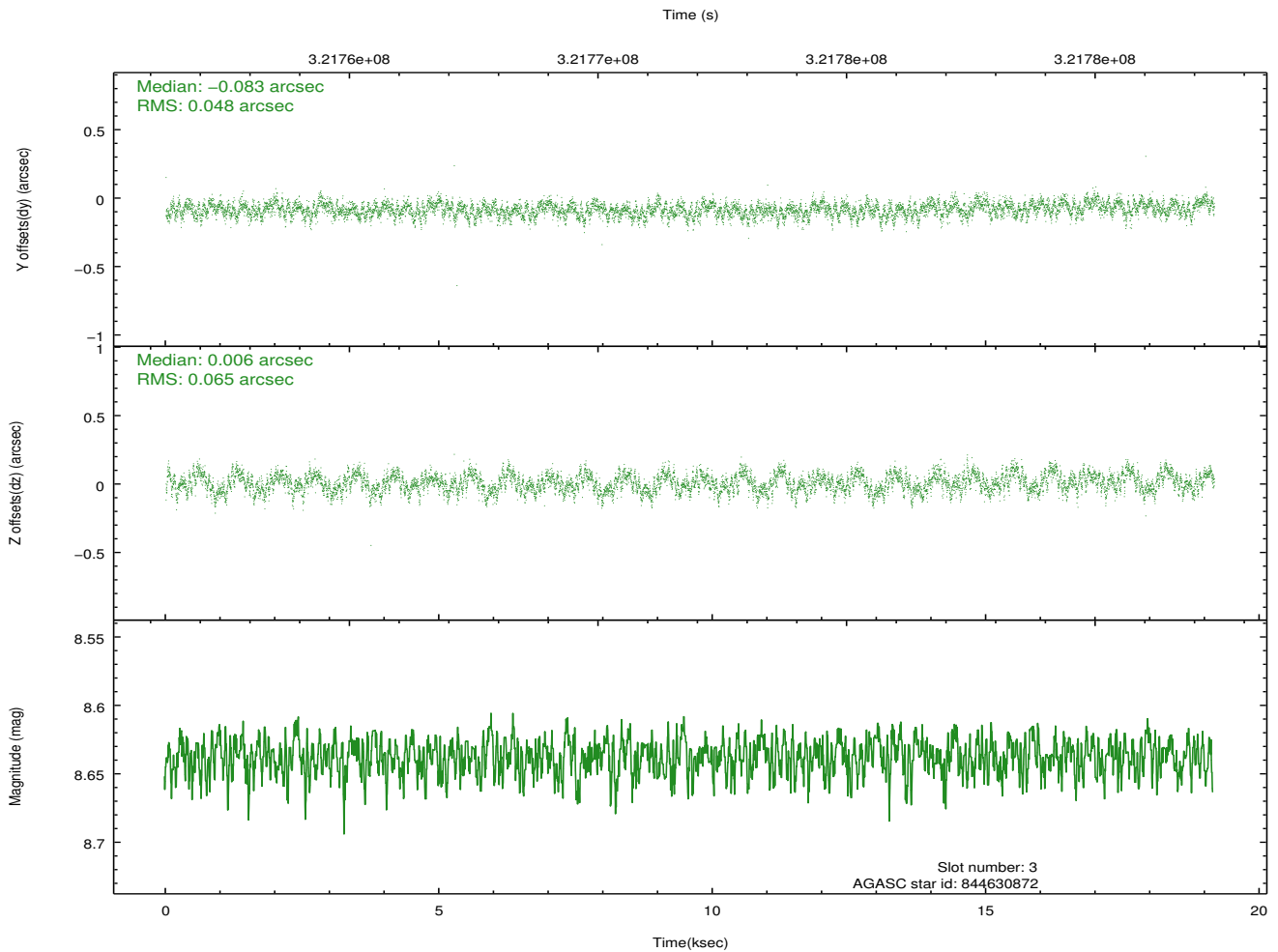
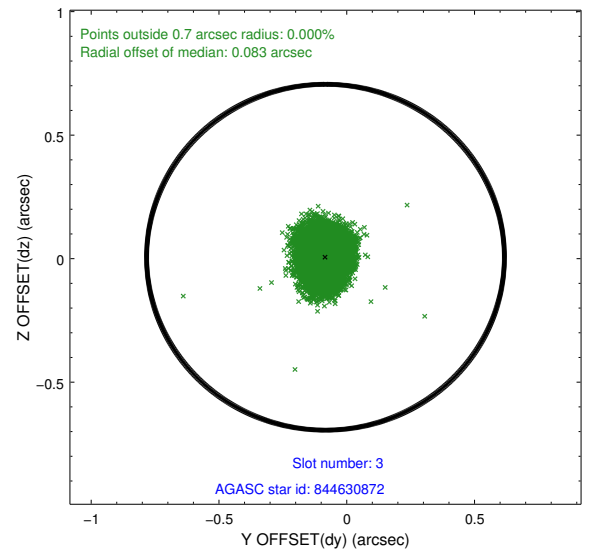
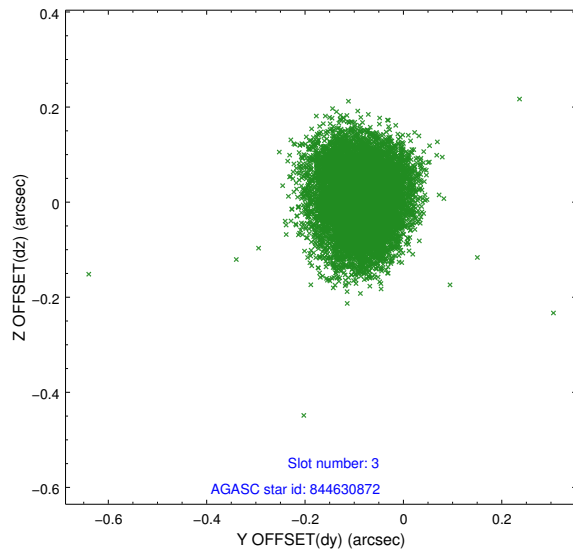


### Slot Statistics

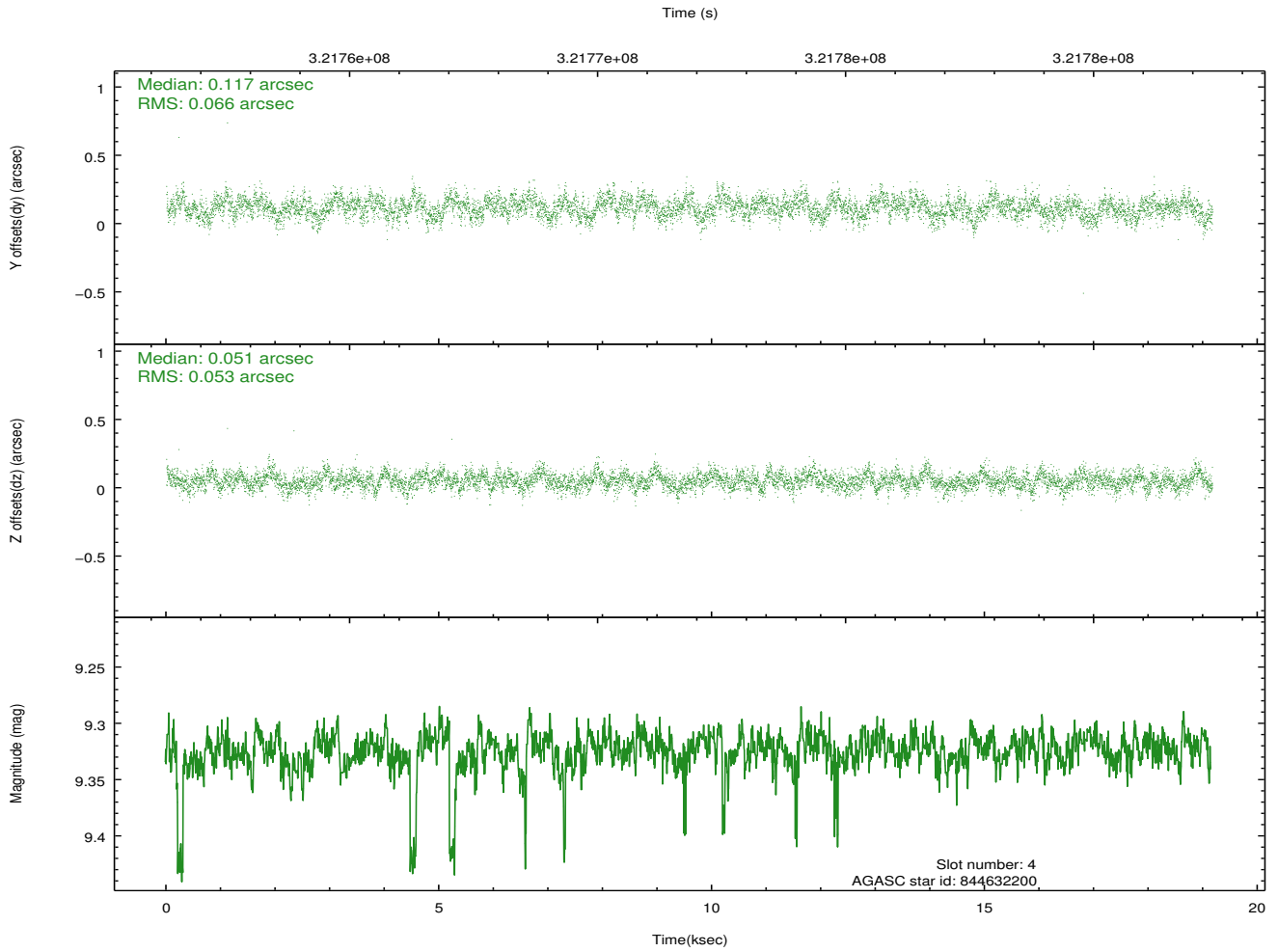
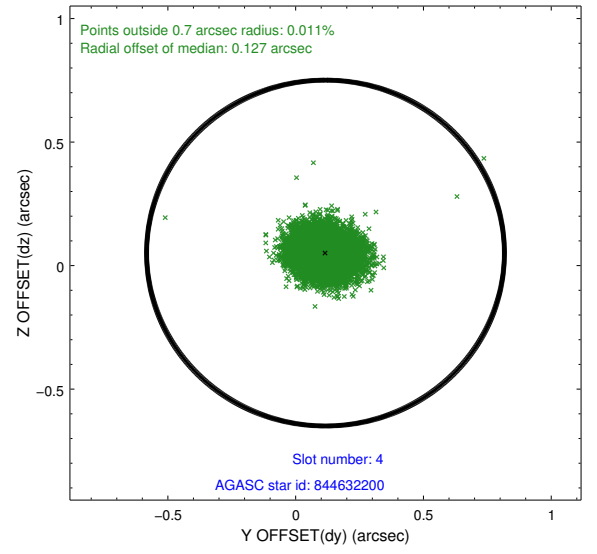
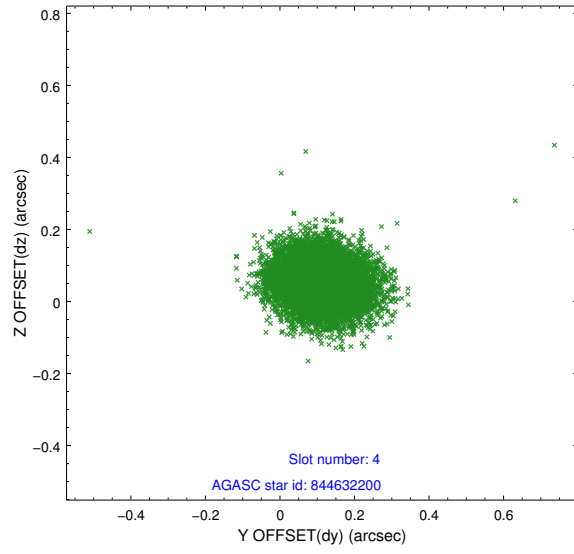
slot	status	id	mag	n_pts	med_dy	med_dz	dr1	dr2	ra	dec	mean_y	mean_z
0	FID	ACIS-I-1	7.22	4675	0.084	-0.041	0.012	0.029	0.000000	0.000000	926.98	-961.86
1	FID	ACIS-I-5	7.22	4676	-0.241	0.078	0.012	0.029	0.000000	0.000000	-1821.37	935.59
2	FID	ACIS-I-6	7.23	4676	0.067	0.032	0.015	0.031	0.000000	0.000000	392.24	1580.30
3	GUIDE	844630872	8.64	9350	-0.083	0.006	0.086	0.136	46.308244	-27.950971	-2098.95	-2056.97
4	GUIDE	844632200	9.32	9322	0.117	0.051	0.090	0.146	46.424821	-29.127316	1845.19	-471.25
5	GUIDE	844632280	8.69	9347	-0.070	0.128	0.062	0.099	46.536602	-28.809823	649.36	-465.86
6	GUIDE	844633192	8.30	9351	-0.125	0.048	0.068	0.110	47.334603	-28.363870	-1612.20	1490.76
7	GUIDE	844633368	9.16	9338	0.161	-0.242	0.129	0.209	45.835189	-29.048290	2117.19	-2328.12

## 2.4 Star Slots

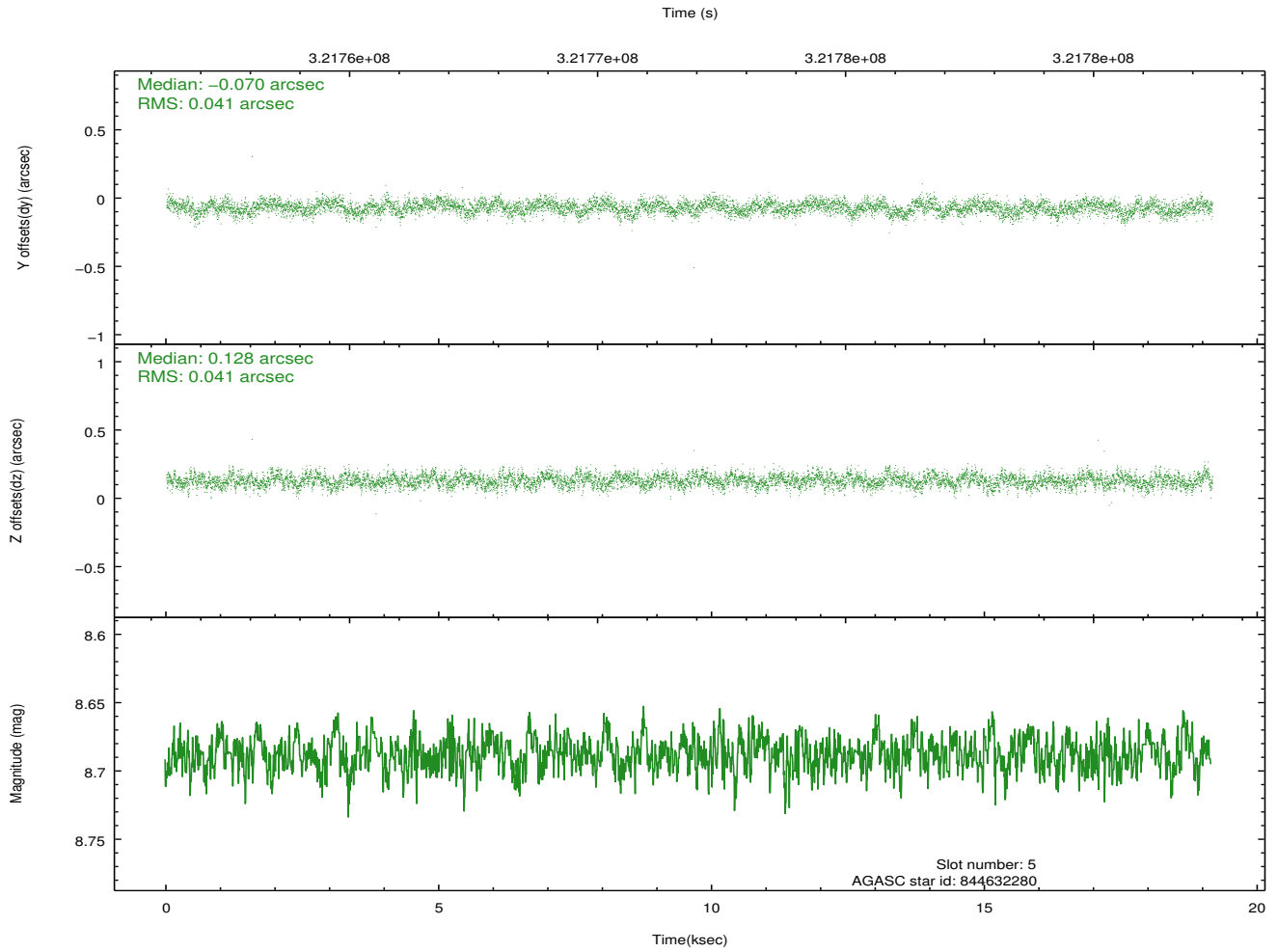
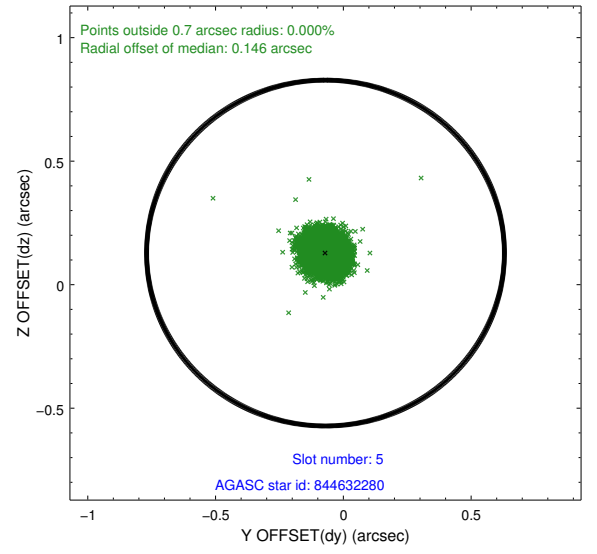
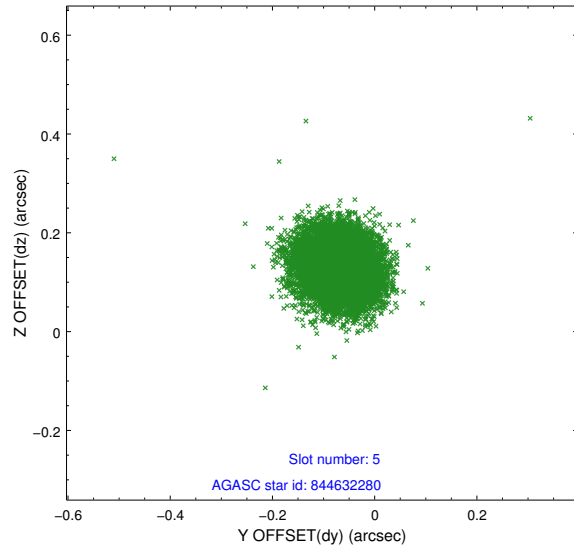
### 2.4.1 Slot 3



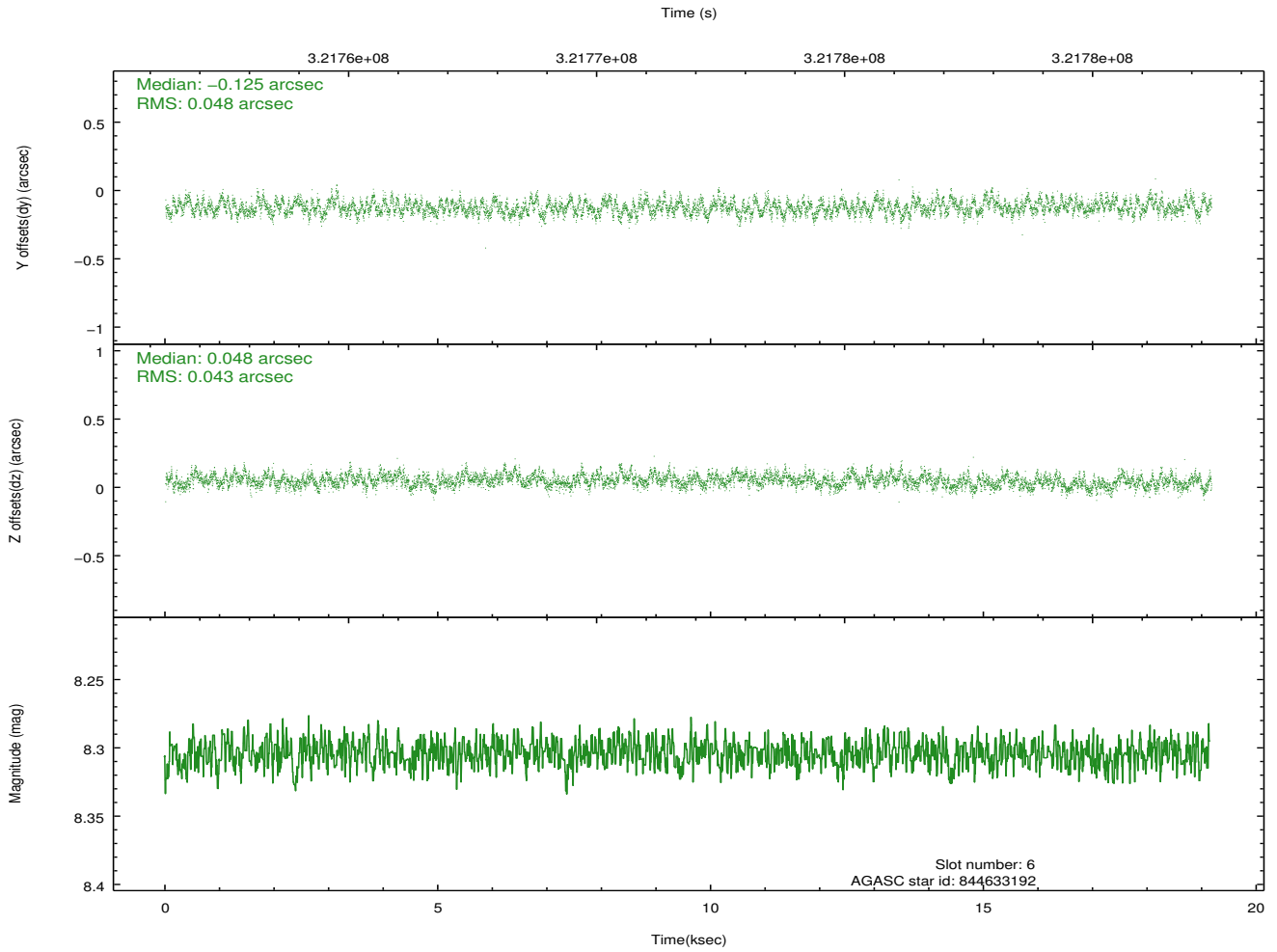
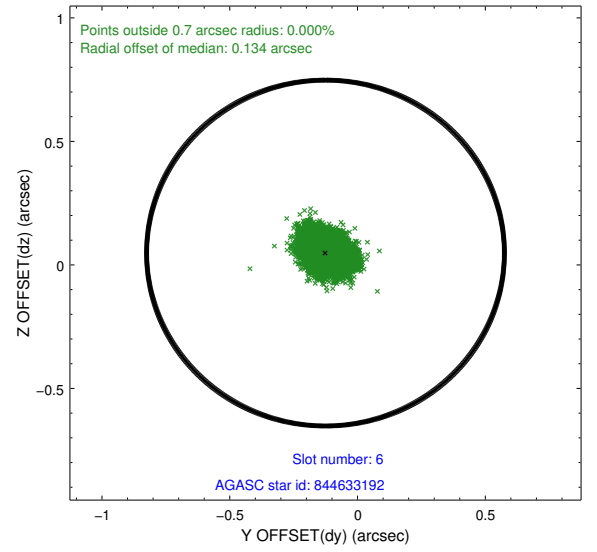
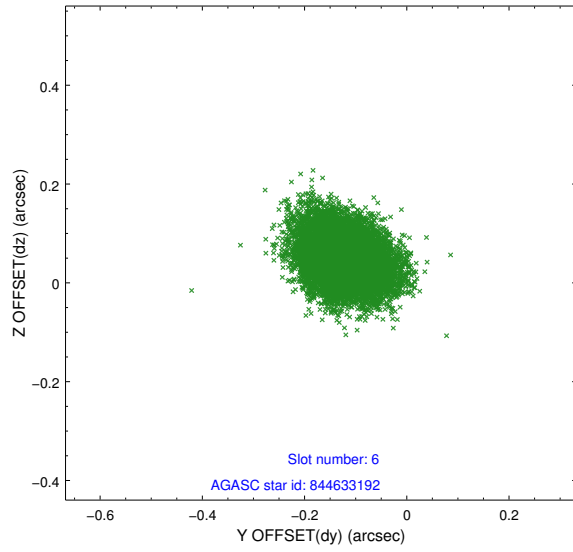
## 2.4.2 Slot 4



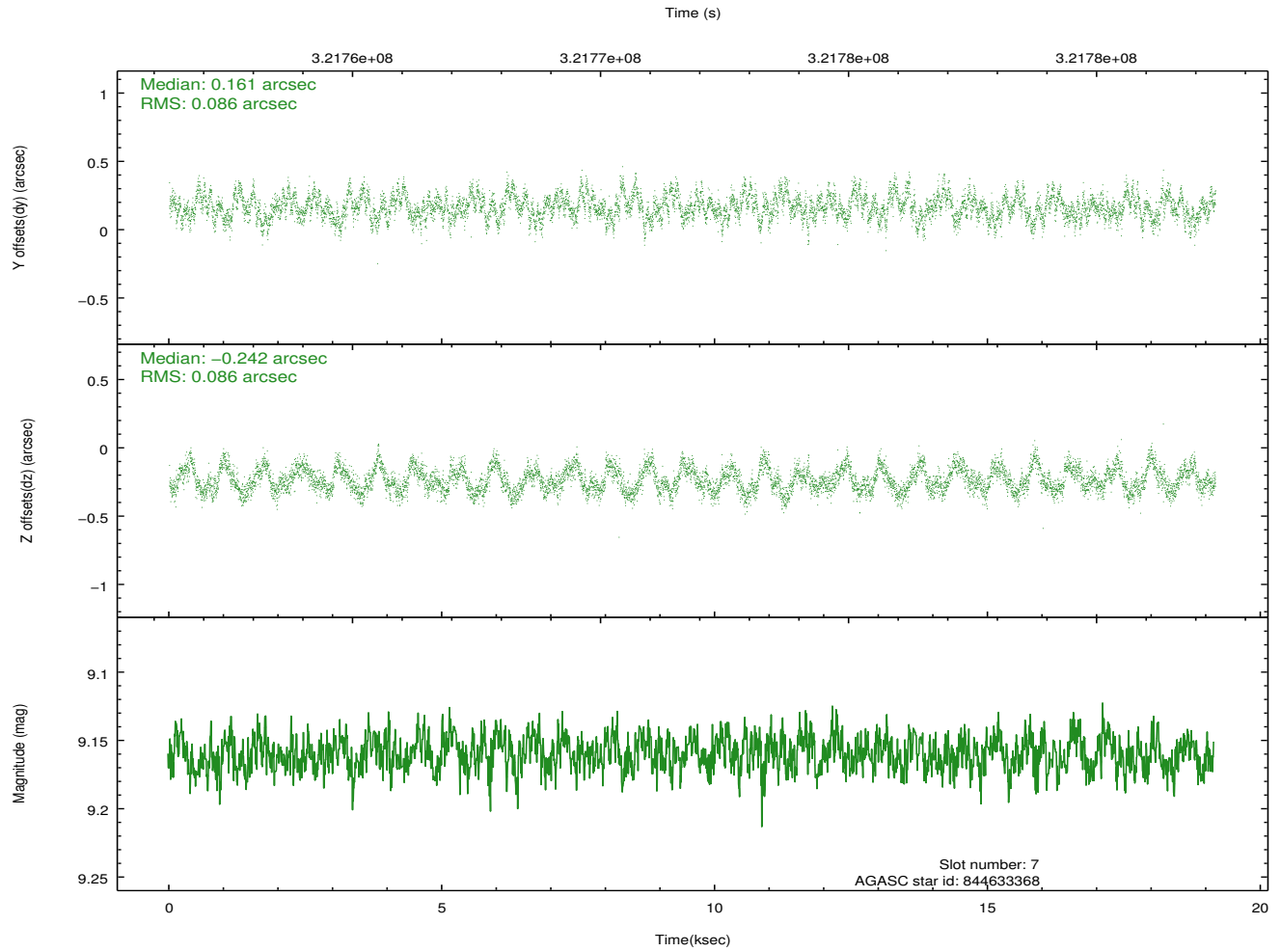
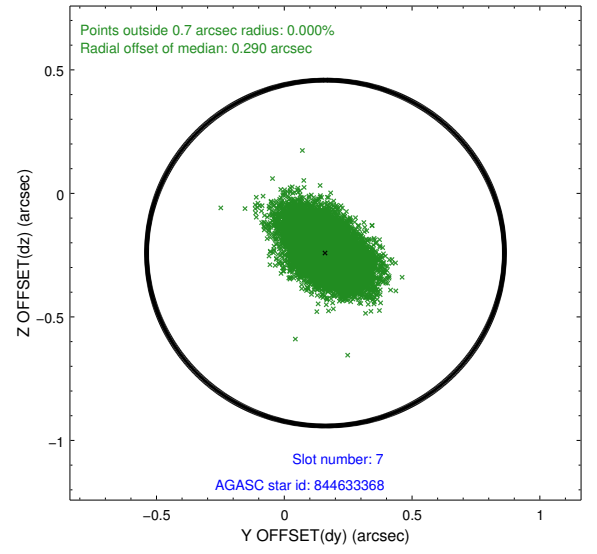
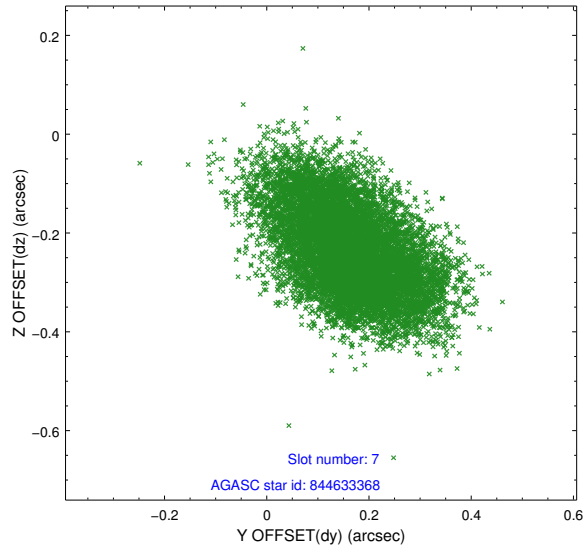
### 2.4.3 Slot 5



## 2.4.4 Slot 6

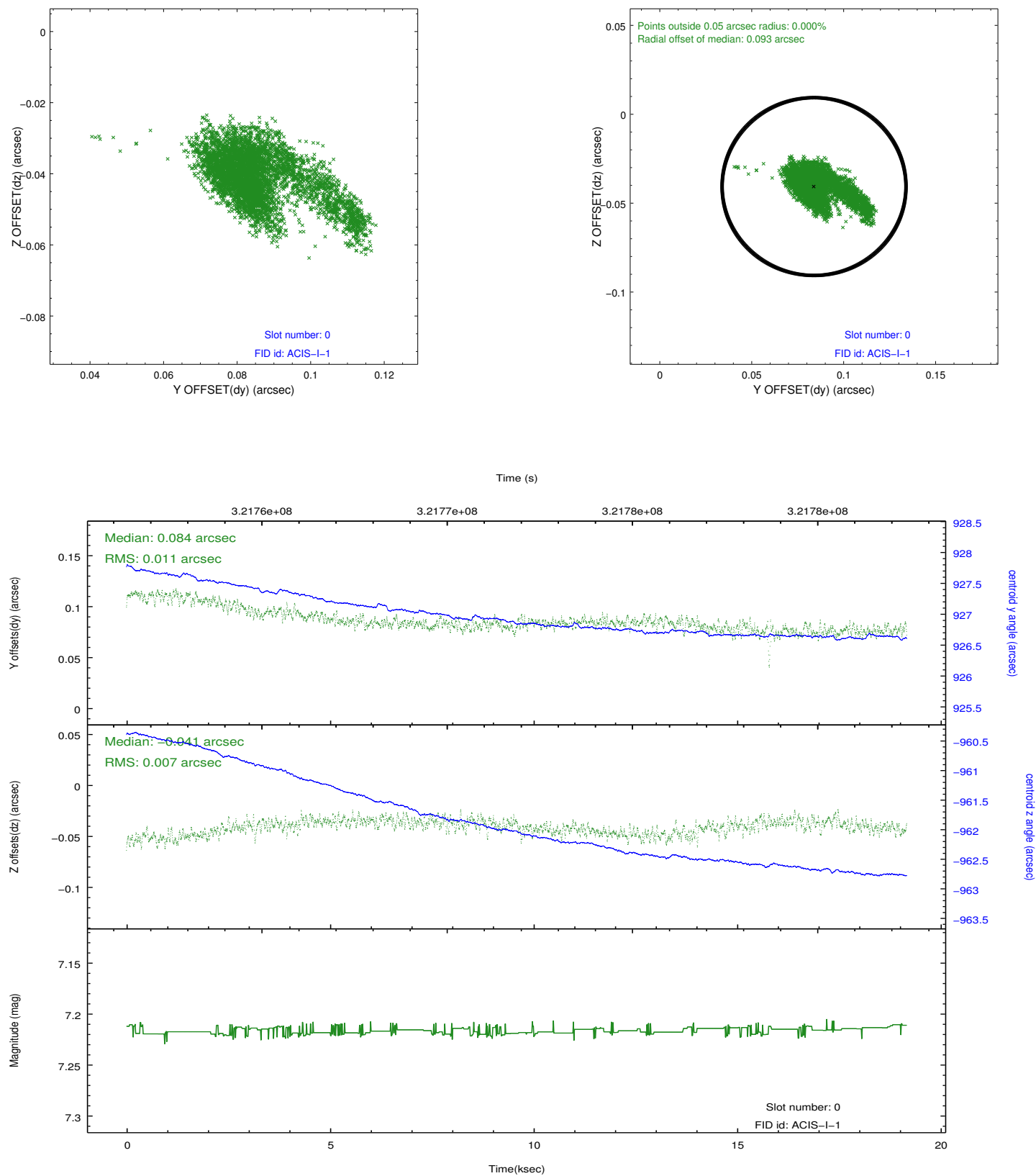


### 2.4.5 Slot 7

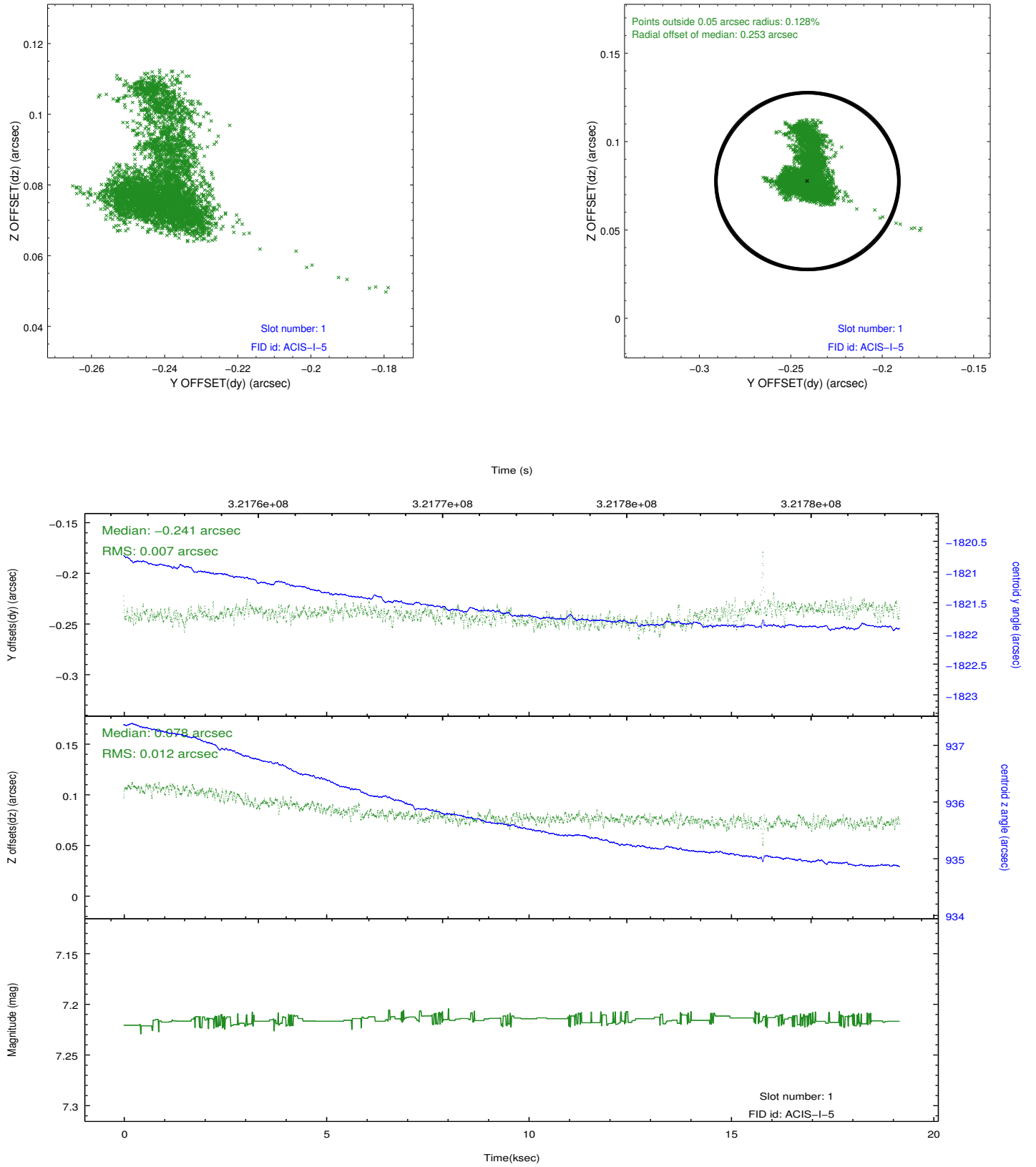


## 2.5 FID Slots

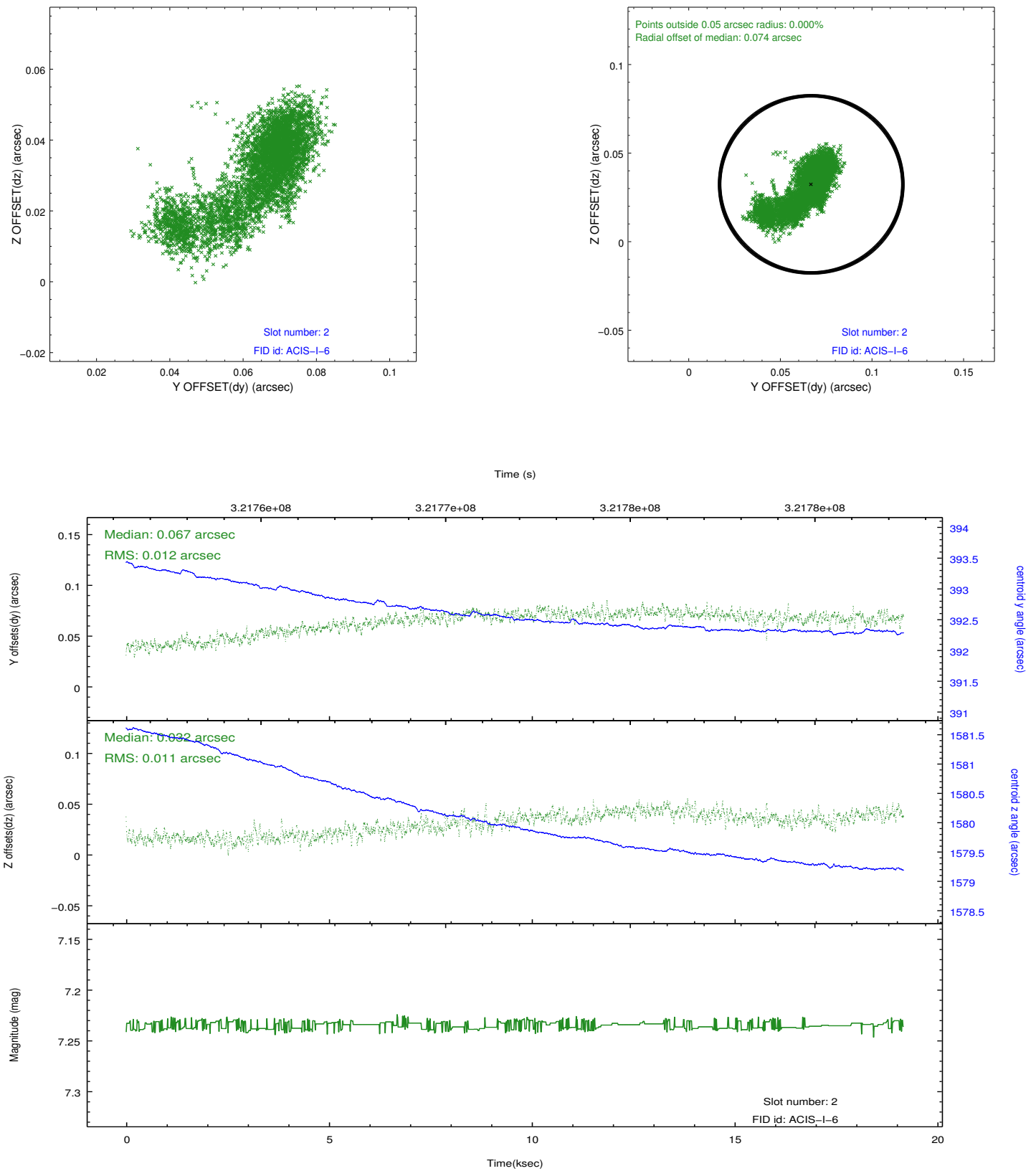
### 2.5.1 Slot 0



## 2.5.2 Slot 1



### 2.5.3 Slot 2



## A Summary

### A.1 Status

V&V Scientist	Jen Lauer
V&V Date (YYYY-MM-DD)	2012.05.14
V&V Edition	1
V&V Disposition and Status	OK
V&V Charge Time	19.1579181

### A.2 Comments