

# V&V Reference Report

## L2 ASCDS Version : 8.4.4

Observation 8914 - L2 Version 2  
Chandra X-Ray Center

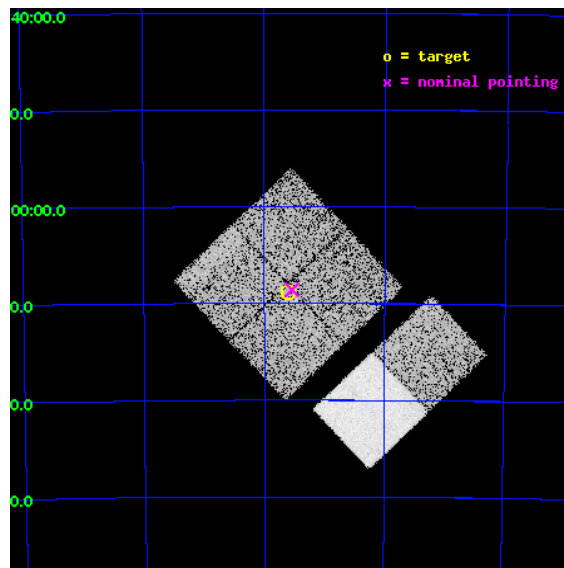
L2 Processing Date : May 23 2012

## Contents

<b>1</b>	<b>Front</b>	<b>2</b>
<b>2</b>	<b>OBI</b>	<b>3</b>
2.1	OBI . . . . .	3
2.1.1	Images . . . . .	3
2.1.2	Bias . . . . .	3
2.1.3	Parameters . . . . .	4
2.1.4	Events . . . . .	4
2.2	Compared Parameters . . . . .	5
2.3	Aspect . . . . .	6
2.4	Star Slots . . . . .	9
2.4.1	Slot 3 . . . . .	9
2.4.2	Slot 4 . . . . .	10
2.4.3	Slot 5 . . . . .	11
2.4.4	Slot 6 . . . . .	12
2.4.5	Slot 7 . . . . .	13
2.5	FID Slots . . . . .	14
2.5.1	Slot 0 . . . . .	14
2.5.2	Slot 1 . . . . .	15
2.5.3	Slot 2 . . . . .	16
<b>A</b>	<b>Summary</b>	<b>17</b>
A.1	Status . . . . .	17
A.2	Comments . . . . .	17

# 1 Front

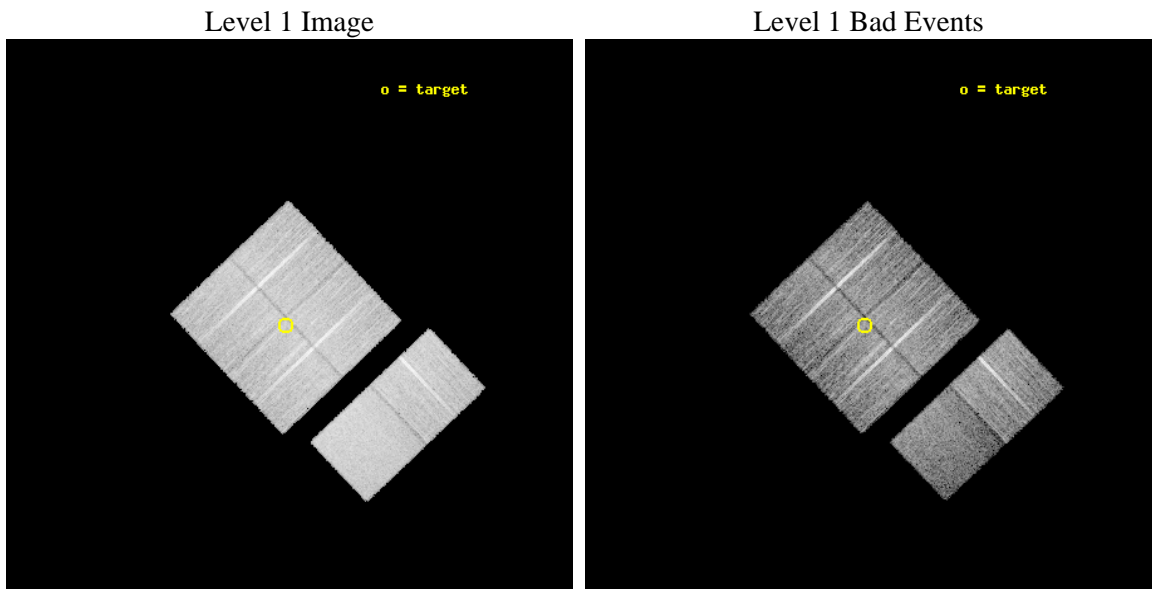
seq_num	200495	Sequence number
obs_id	8914	Observation id
title	Survey of Class 0 Protostars in the Smallest Clouds 'Bok Globules	&#160
observer	Prof. Yohko Tsuboi	Principal investigator
object	BHR71-MM	Source name
dtcycle	0	&#160
cycle	P	events from which exps? Prim/Second/Both
ra_targ	180.402729	Observer's specified target RA [deg]
dec_targ	-65.146819	Observer's specified target Dec [deg]
ra_nom	180.38557483546	Nominal RA [deg]
dec_nom	-65.14325906832	Nominal Dec [deg]
roll_nom	136.54780217661	Nominal Roll [deg]
revision	2	Processing version of data
ontime	10153.599962234	Sum of GTIs [s]
livetime	10025.028965749	Livetime [s]
ontime0	10150.359011829	Sum of GTIs [s]
ontime1	10153.599962234	Sum of GTIs [s]
ontime2	10150.358972073	Sum of GTIs [s]
ontime3	10153.599962234	Sum of GTIs [s]
ontime6	10153.599962234	Sum of GTIs [s]
ontime7	10153.599962234	Sum of GTIs [s]
l2events	76479	Number of level 2 events



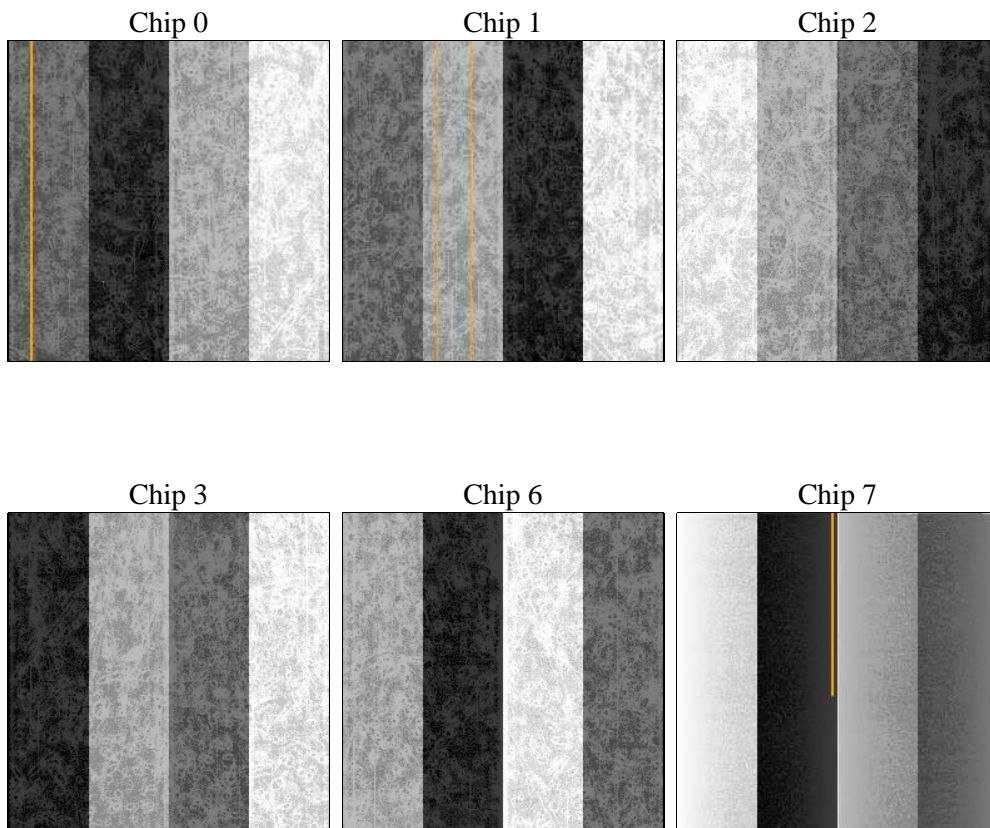
## 2 OBI

### 2.1 OBI

#### 2.1.1 Images



#### 2.1.2 Bias



### 2.1.3 Parameters

obi_num	2	Obi number	sched_exp_time	10000.000000	[s] Scheduled observation exposure time
ascdsver	8.4.4	Processing system revision	ontime	10153.599962234	Sum of GTIs [s]
caldsver	4.4.9	&#160	ontime0	10150.359011829	Sum of GTIs [s]
date	2012-05-23T12:11:38	Date and time of file creation	ontime1	10153.599962234	Sum of GTIs [s]
revision	2	Processing version of data	ontime2	10150.358972073	Sum of GTIs [s]
			ontime3	10153.599962234	Sum of GTIs [s]
			ontime6	10153.599962234	Sum of GTIs [s]
			ontime7	10153.599962234	Sum of GTIs [s]
			l1events	503379	Number of level 1 events

### 2.1.4 Events

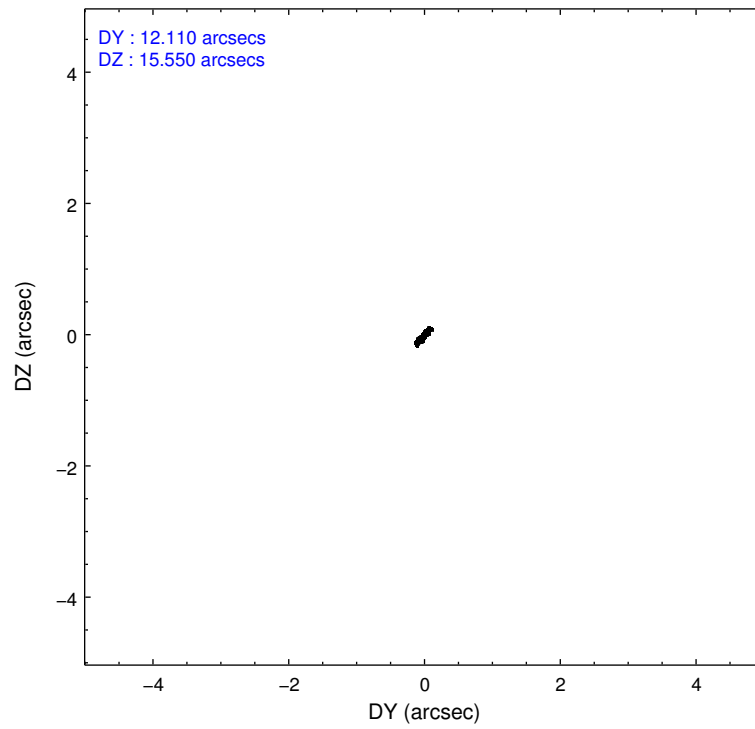
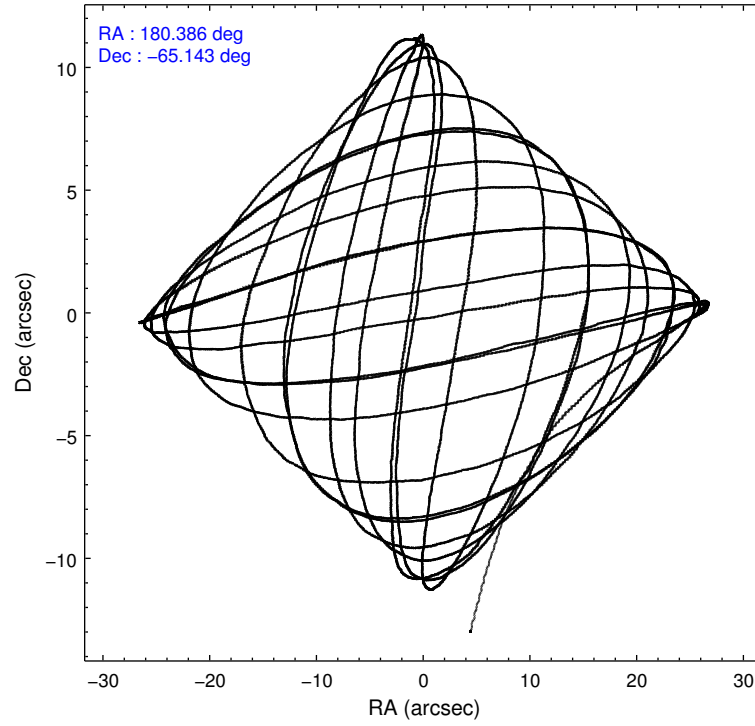
	ccd 0	ccd 1	ccd 2	ccd 3	ccd 6	ccd 7		ccd 0	ccd 1	ccd 2	ccd 3	ccd 6	ccd 7
level 1 events	79703	75609	83466	82324	87277	95000	grade 0 events	2964	3481	2953	2755	3126	4119
rejected events	71325	66173	75509	74612	78407	52501		3%	4%	3%	3%	3%	4%
rejected %	89%	87%	90%	90%	89%	55%	grade 1 events	57	57	55	57	35	135
								0%	0%	0%	0%	0%	0%
							grade 2 events	2055	2195	1936	1740	2050	8778
								2%	2%	2%	2%	2%	9%
							grade 3 events	915	1034	853	890	921	3983
								1%	1%	1%	1%	1%	4%
							grade 4 events	878	1018	856	861	955	3934
								1%	1%	1%	1%	1%	4%
							grade 5 events	2964	3127	2854	3450	3461	10231
								3%	4%	3%	4%	3%	10%
							grade 6 events	1700	1853	1496	1582	1979	22385
								2%	2%	1%	1%	2%	23%
							grade 7 events	68170	62844	72463	70989	74750	41435
								85%	83%	86%	86%	85%	43%

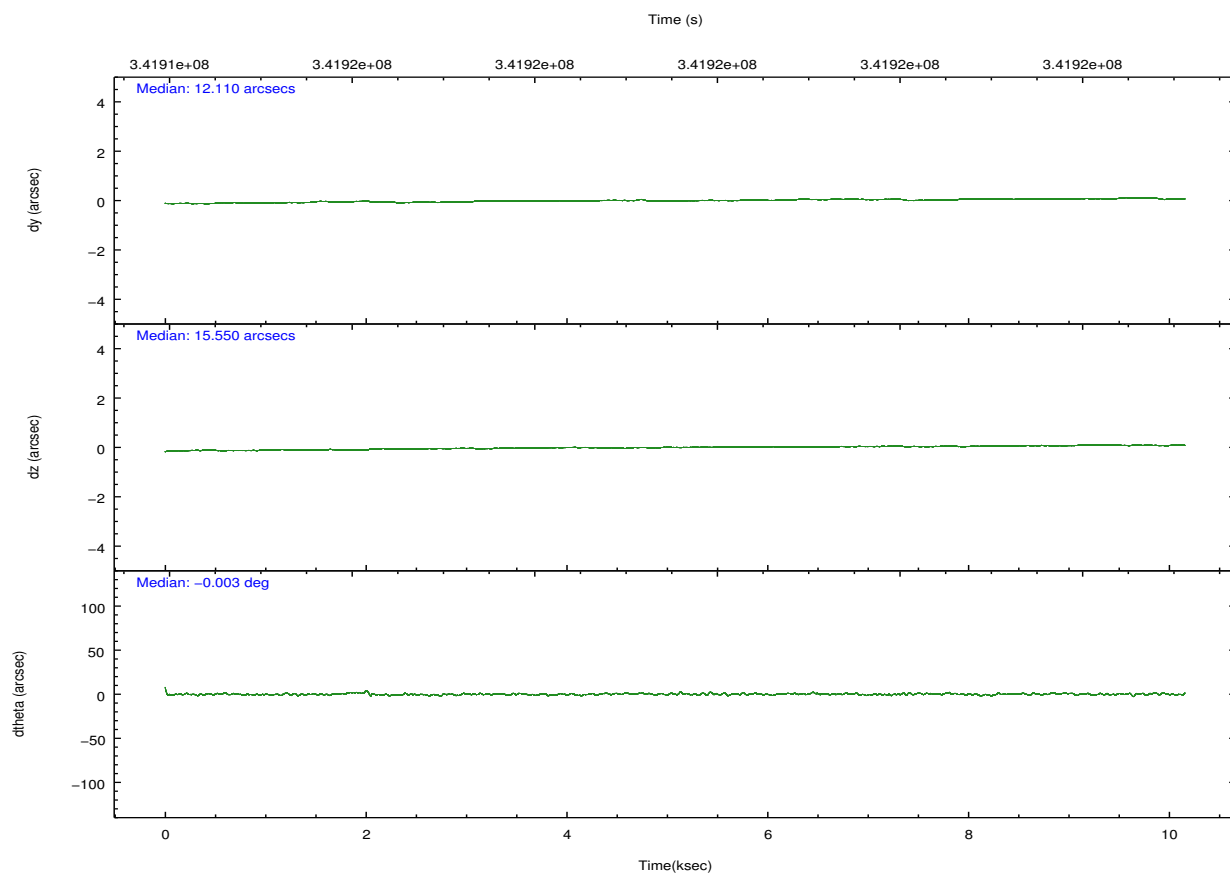
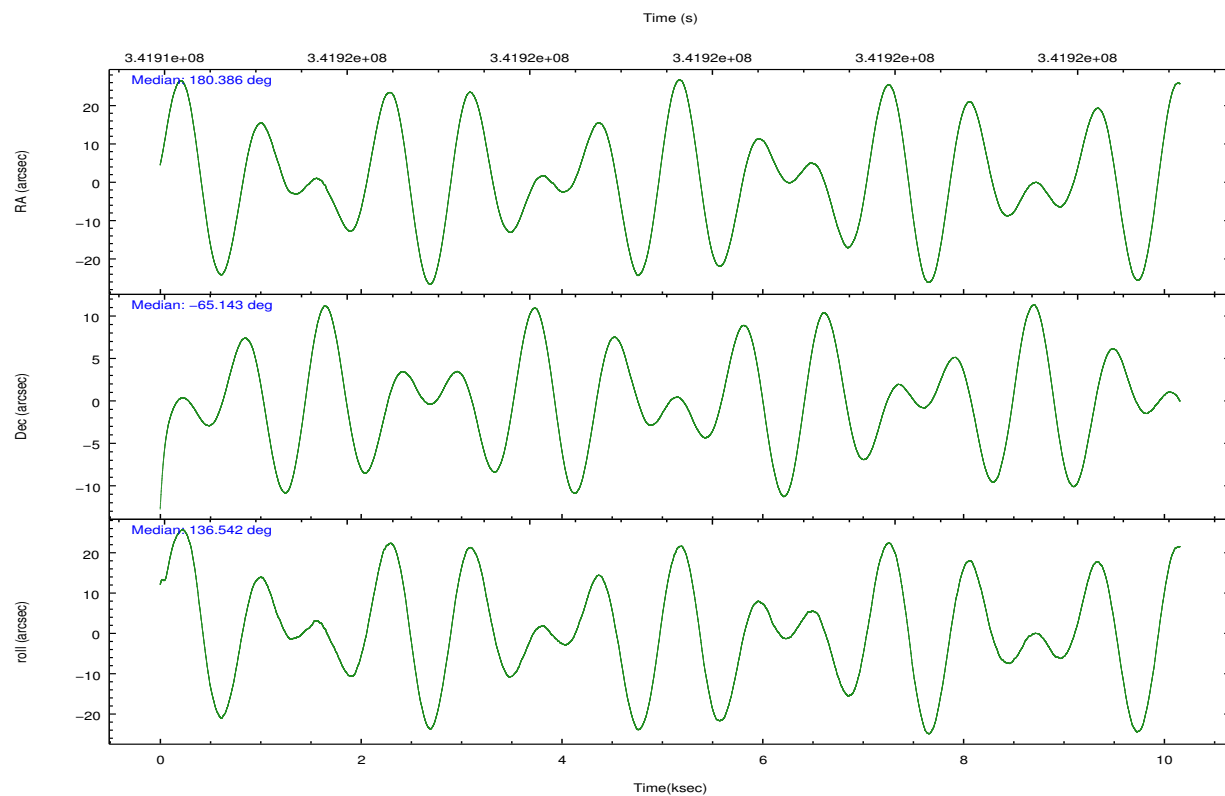


## 2.2 Compared Parameters

Parameter	Planned	Actual	Parameter	Planned	Actual
Instrument	ACIS	ACIS	Obspar format version number	7	7
Detector	ACIS-012367	ACIS-012367	Obspar file type	PREDICTED	ACTUAL
Grating	NONE	NONE	Obspar update status	NONE	UPDATED
Data mode	VFAINT	VFAINT	CCD I0 on	Y	Y
Observation mode	POINTING	POINTING	CCD I1 on	Y	Y
[deg] Pointing RA	180.449154	180.3855748354638	CCD I2 on	Y	Y
[deg] Pointing Dec	-65.149547	-65.14325906832013	CCD I3 on	Y	Y
[deg] Pointing Roll	136.396807	136.5478021766139	CCD S0 on	N	N
[mm] SIM focus pos	-0.782348	-0.7809083437167272	CCD S1 on	N	N
[mm] SIM defocus	0	0.001439871863259334	CCD S2 on	O2	Y
[mm] SIM translation stage pos	-233.592463	-233.5874344608287	CCD S3 on	O1	Y
[mm] SIM translation stage offset	0	-0.005018542100998502	CCD S4 on	N	N
[s] Observation start time (MET)	341914619.184000	341913476.27629	CCD S5 on	N	N
Observation start date	2008-11-01T08:15:54	2008-11-01T07:57:56	Number of optional ACIS chips dropped	0	0
[s] Observation end time (MET)	341924619.184000	341925698.37689	On-chip summing requested	N	N
Observation end date	2008-11-01T11:02:34	2008-11-01T11:21:38	Subarray requested	NONE	NONE
Read mode	TIMED	TIMED	Alternating exposures requested	N	N
			[s] Primary exposure time	0.000000	3.2

## 2.3 Aspect



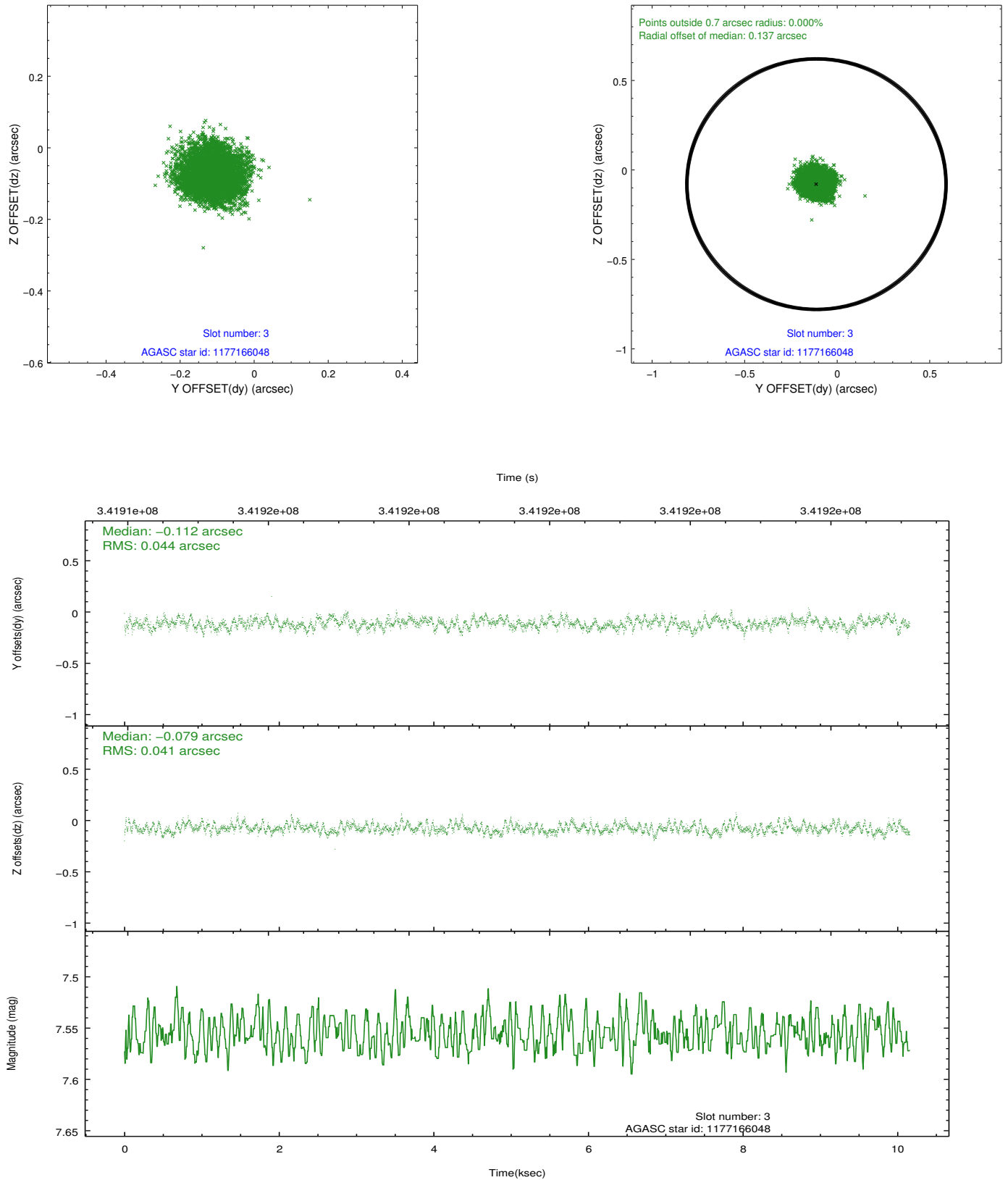


### Slot Statistics

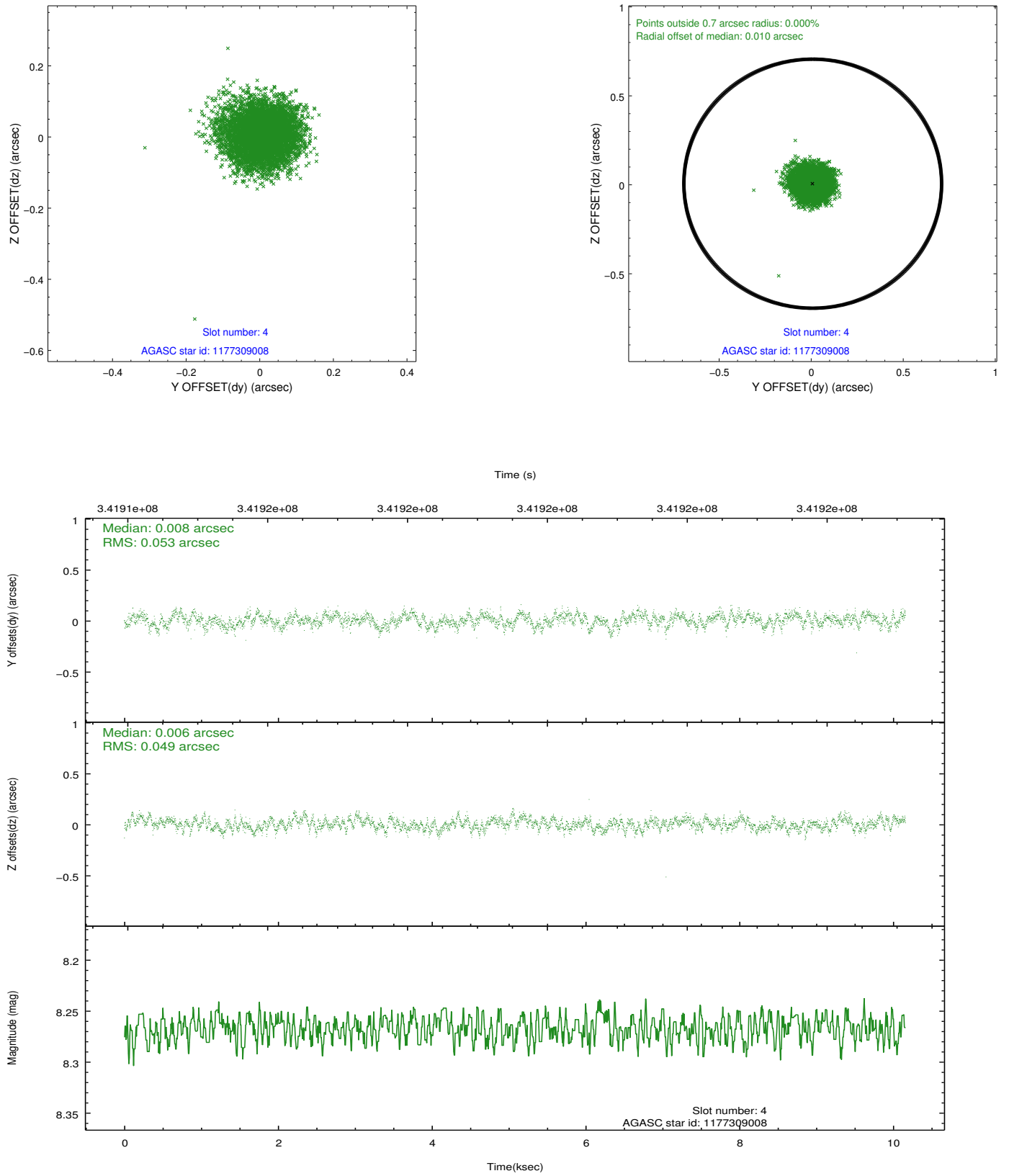
slot	status	id	mag	n_pts	med_dy	med_dz	dr1	dr2	ra	dec	mean_y	mean_z
0	FID	ACIS-I-2	6.91	2477	-0.129	-0.063	0.006	0.012	0.000000	0.000000	-766.86	-845.59
1	FID	ACIS-I-4	6.92	2477	0.061	0.070	0.007	0.012	0.000000	0.000000	2147.13	1060.48
2	FID	ACIS-I-6	6.98	2477	-0.032	0.057	0.009	0.015	0.000000	0.000000	393.96	1703.23
3	GUIDE	1177166048	7.56	4955	-0.112	-0.079	0.065	0.102	179.493338	-65.322109	604.45	1448.80
4	GUIDE	1177309008	8.27	4956	0.008	0.006	0.077	0.122	180.538083	-64.798045	774.52	-1009.58
5	GUIDE	1177829104	8.26	4956	-0.020	0.032	0.081	0.125	180.751065	-65.715237	-1728.57	1167.16
6	GUIDE	1177297504	9.34	4924	0.202	-0.092	0.166	0.286	180.298195	-64.248357	2408.76	-2185.63
7	GUIDE	1177290368	8.79	4954	-0.069	0.134	0.092	0.147	181.636651	-65.492541	-2145.91	-316.65

## 2.4 Star Slots

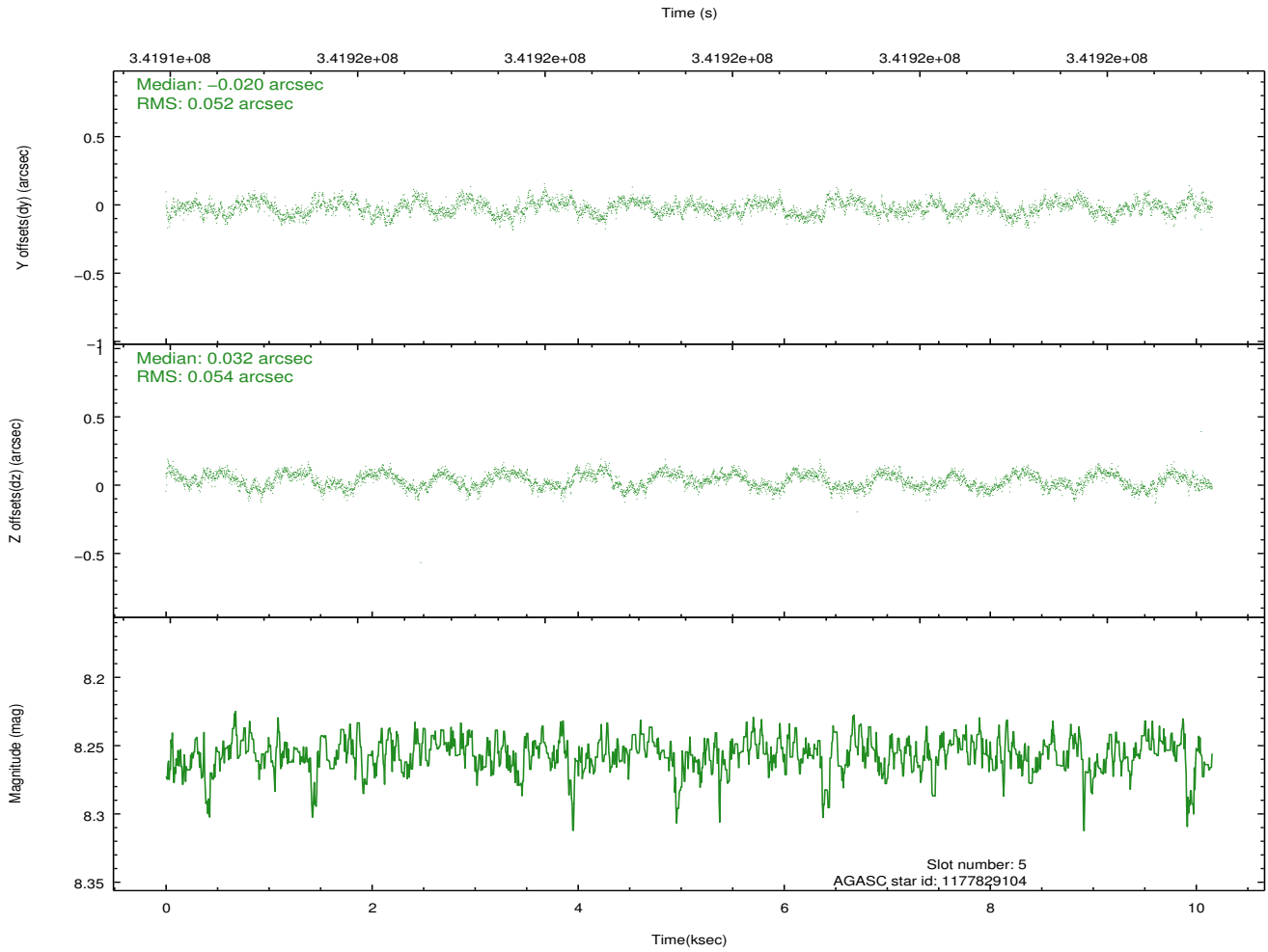
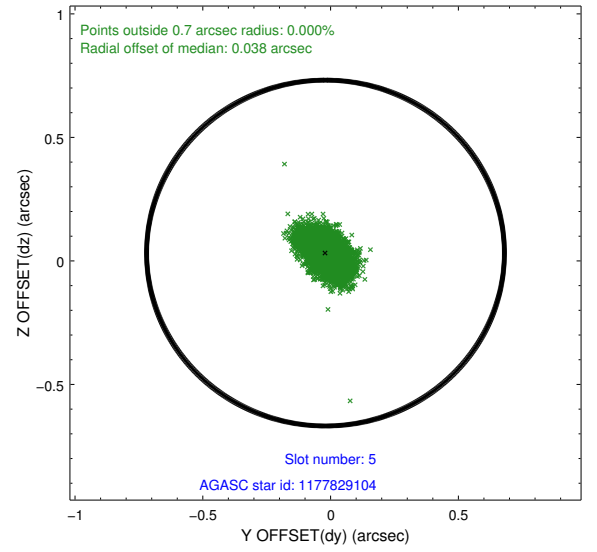
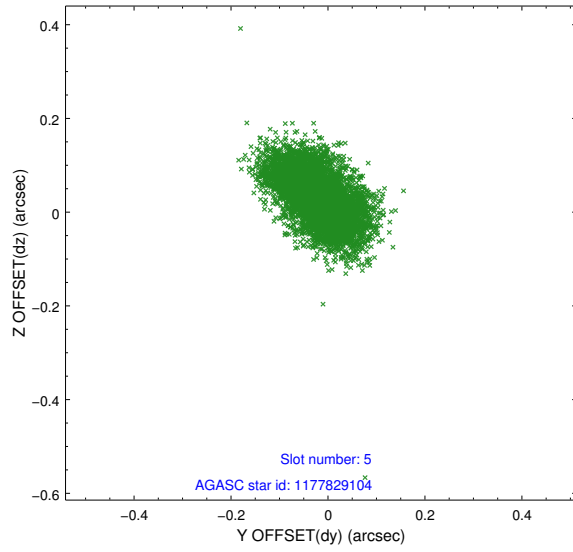
### 2.4.1 Slot 3



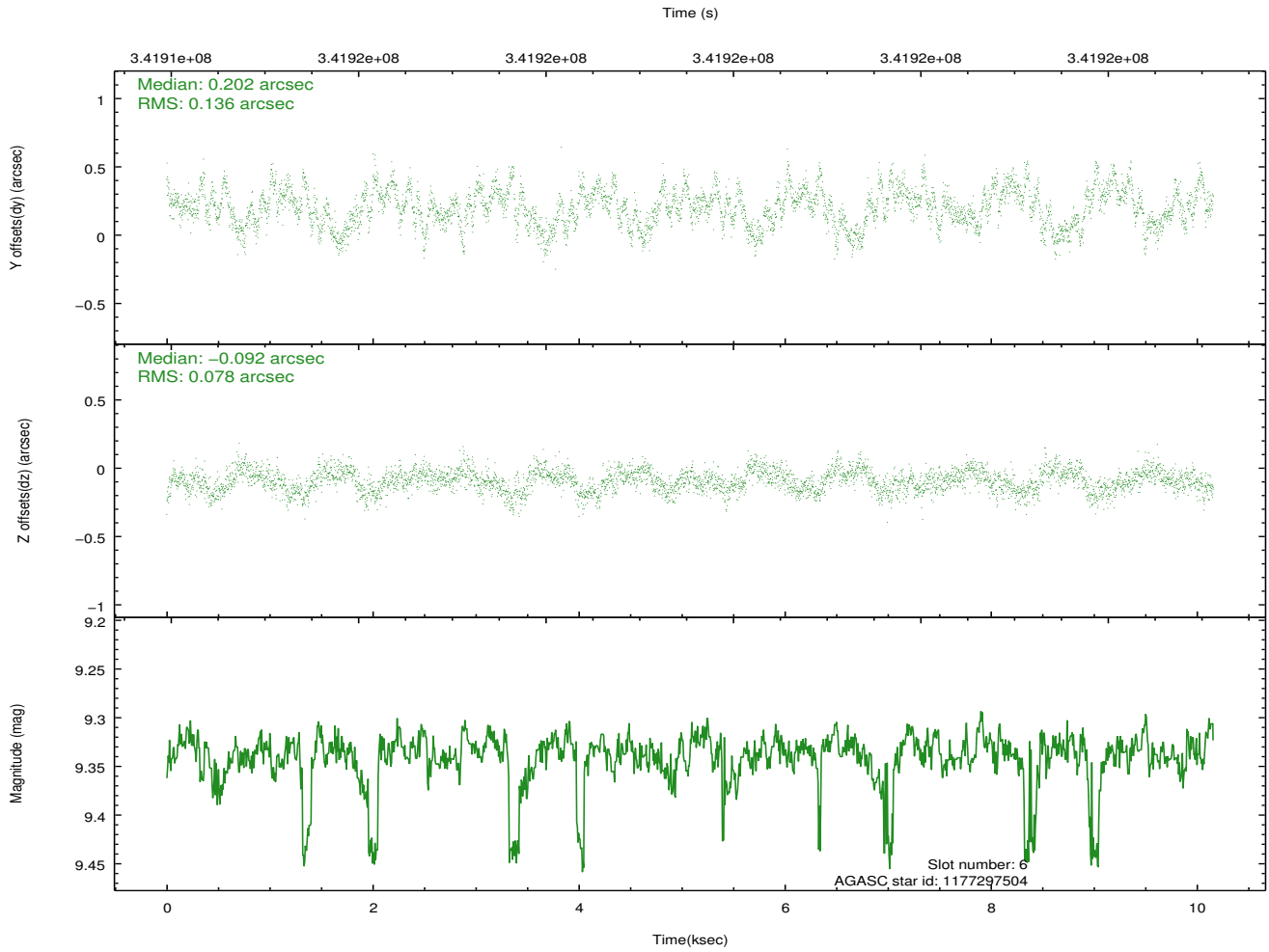
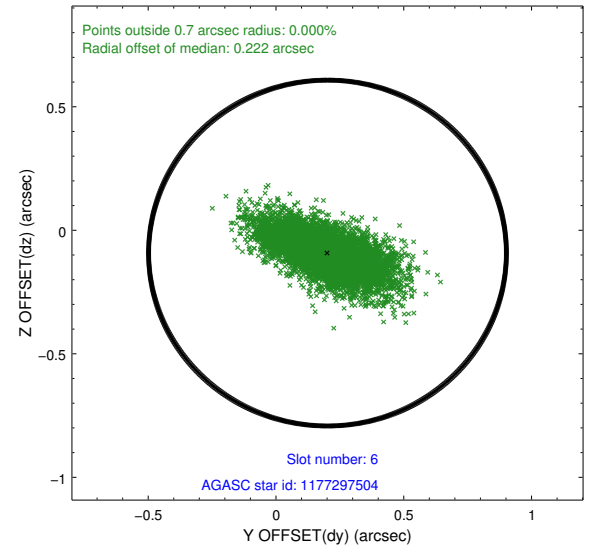
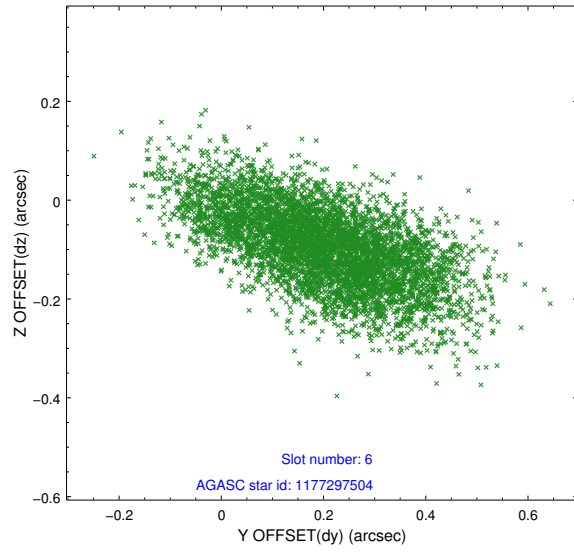
## 2.4.2 Slot 4



### 2.4.3 Slot 5

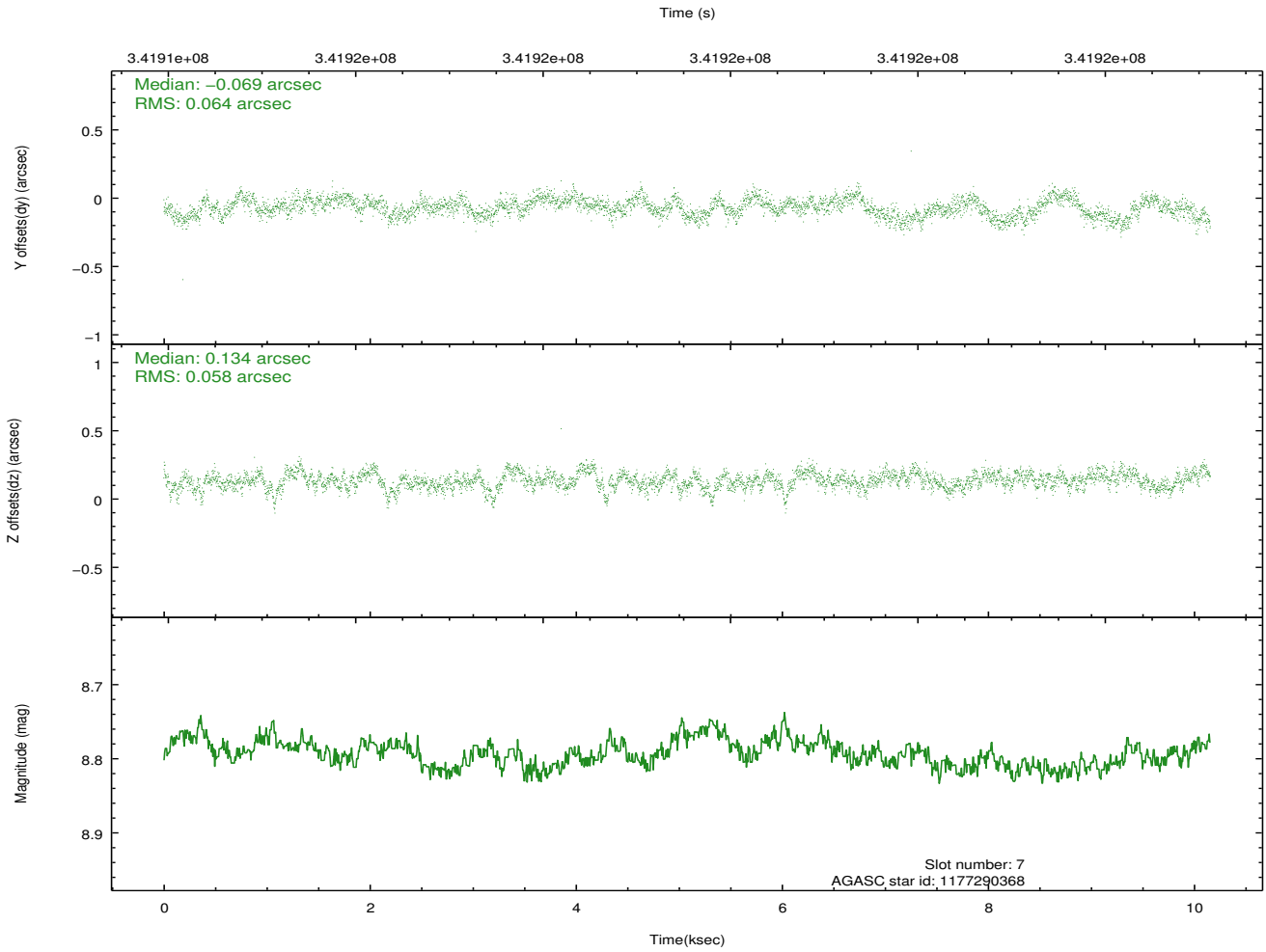
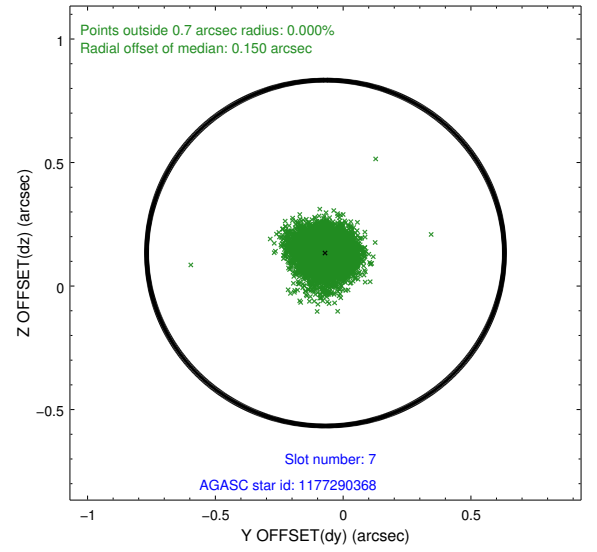
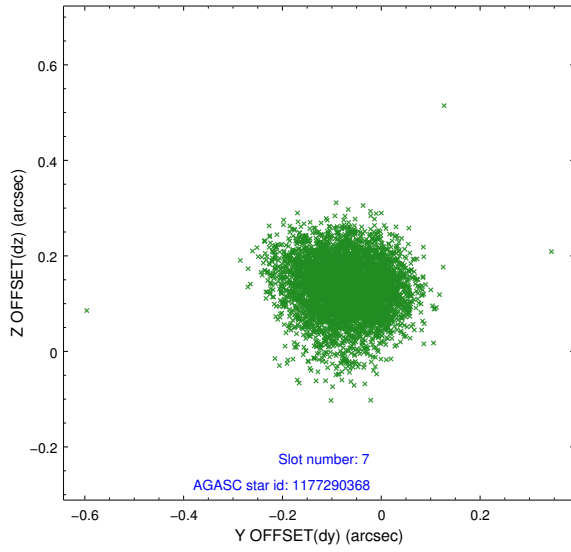


## 2.4.4 Slot 6



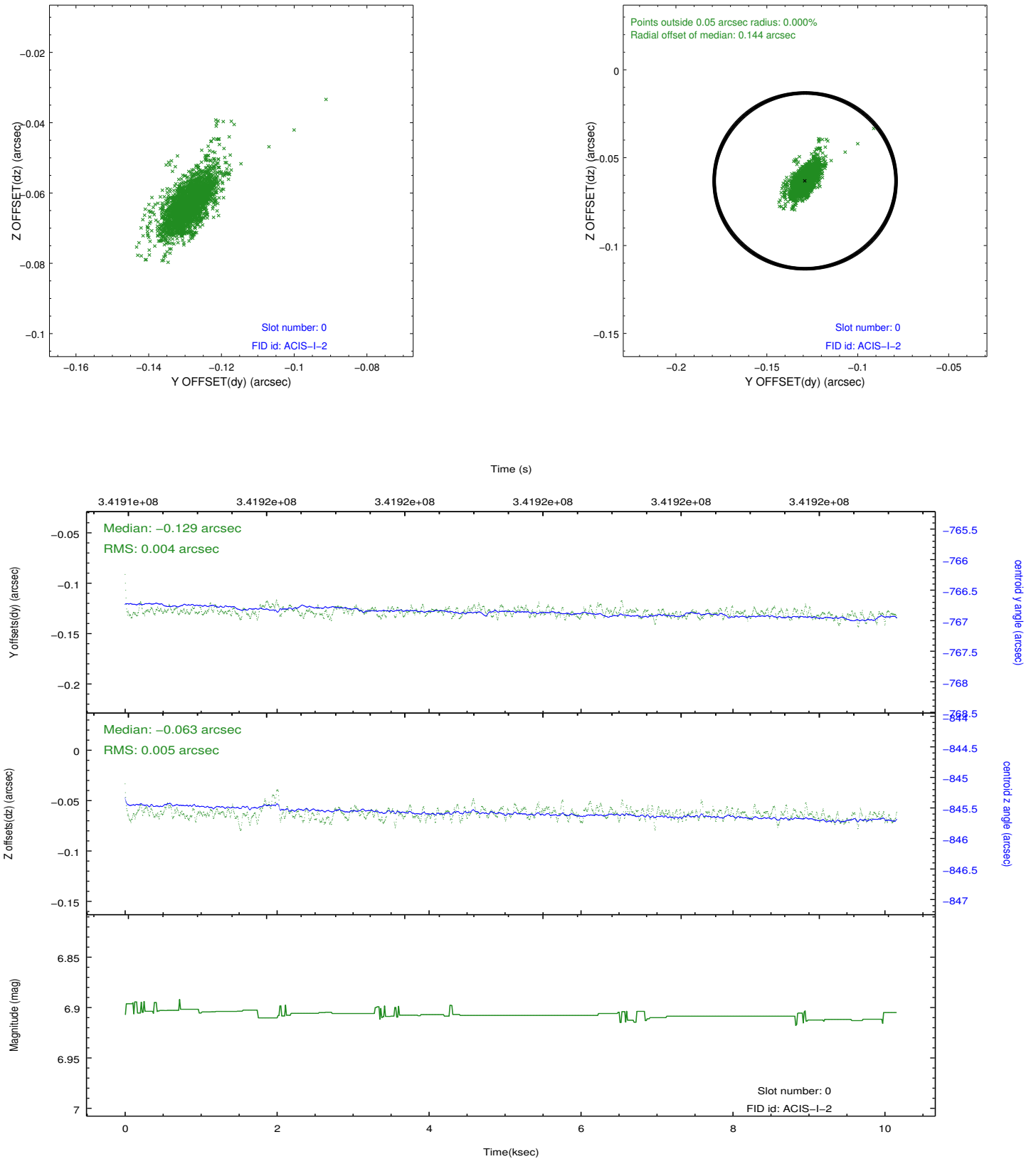


## 2.4.5 Slot 7

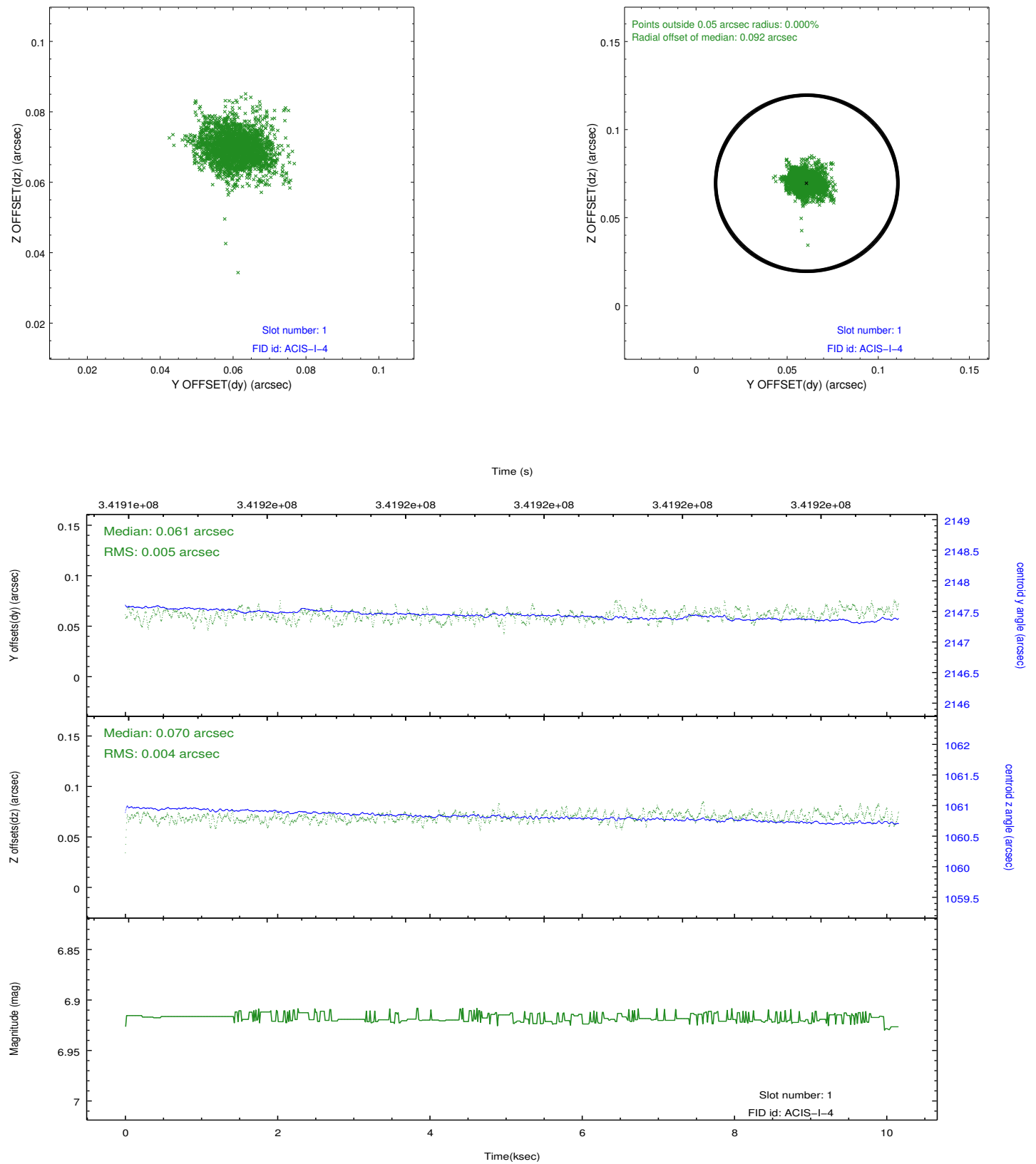


## 2.5 FID Slots

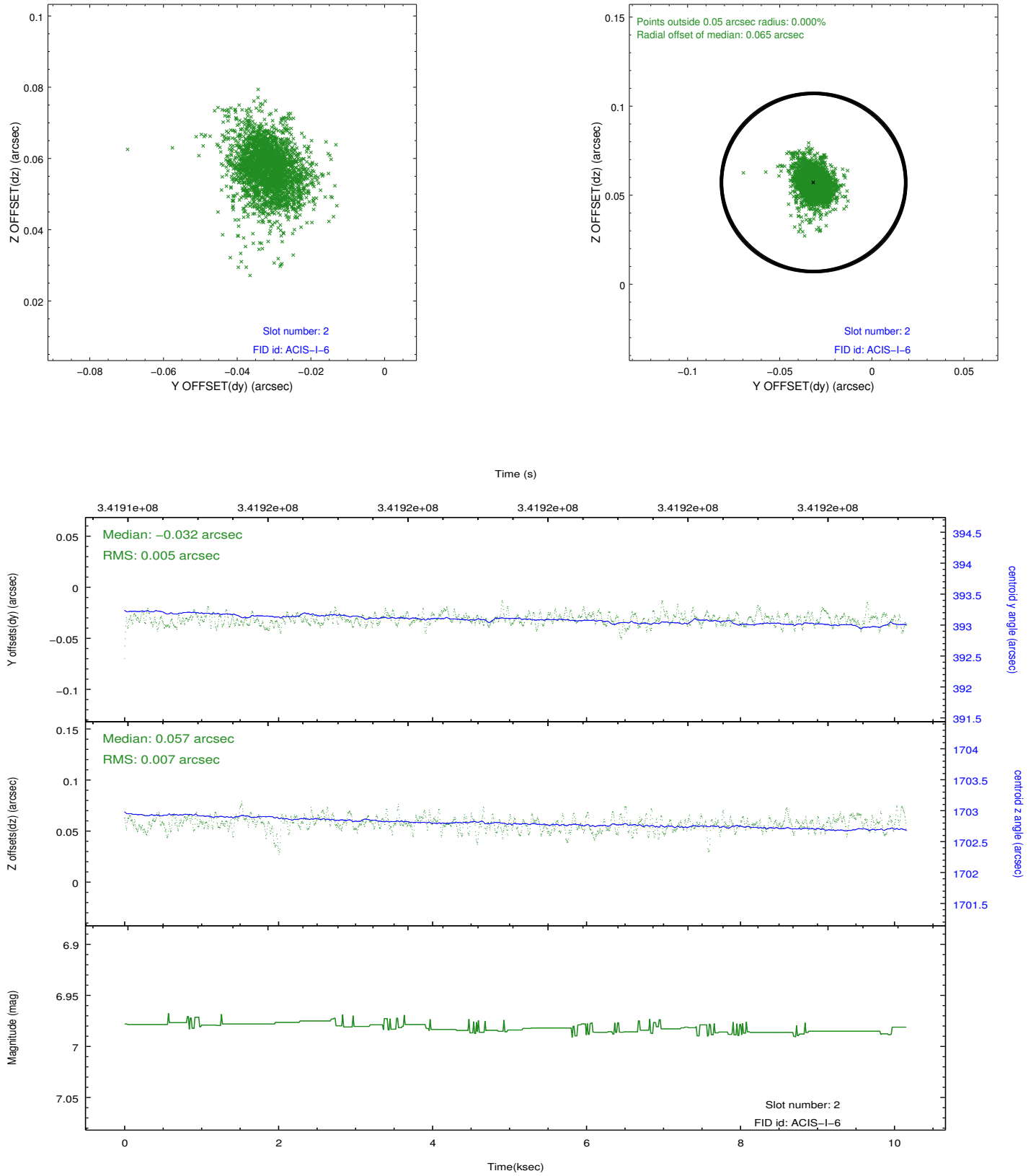
### 2.5.1 Slot 0



### 2.5.2 Slot 1



### 2.5.3 Slot 2



## **A Summary**

### **A.1 Status**

V&V Scientist	Jen Lauer
V&V Date (YYYY-MM-DD)	2012.05.31
V&V Edition	1
V&V Disposition and Status	OK
V&V Charge Time	10.1535999

### **A.2 Comments**