

V&V Reference Report

L2 ASCDS Version : 8.4.4

Observation 8814 - L2 Version 2
Chandra X-Ray Center

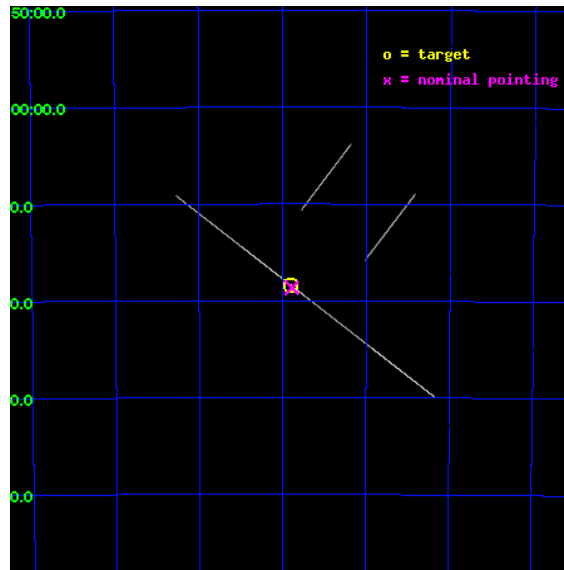
L2 Processing Date : May 25 2012

Contents

1	Front	2
2	OBI	3
2.1	OBI	3
2.1.1	Images	3
2.1.2	Bias	3
2.1.3	Parameters	4
2.1.4	Events	4
2.2	Compared Parameters	5
2.3	Aspect	6
2.4	Star Slots	9
2.4.1	Slot 3	9
2.4.2	Slot 4	10
2.4.3	Slot 5	11
2.4.4	Slot 6	12
2.4.5	Slot 7	13
2.5	FID Slots	14
2.5.1	Slot 0	14
2.5.2	Slot 1	15
2.5.3	Slot 2	16
A	Summary	17
A.1	Status	17
A.2	Comments	17

1 Front

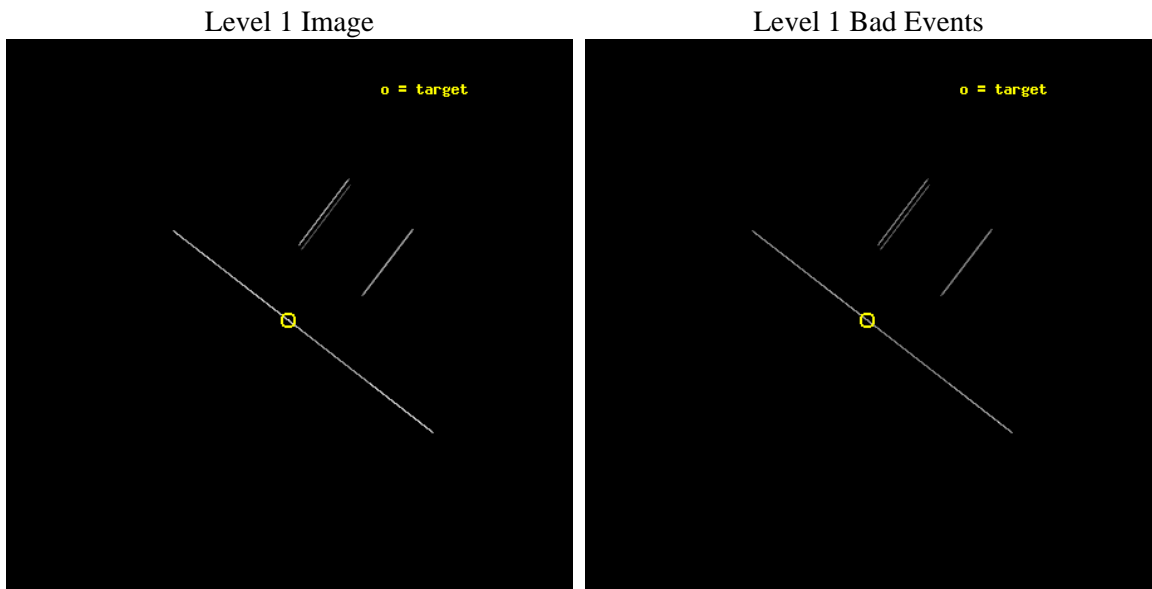
seq_num	500863	Sequence number
obs_id	8814	Observation id
title	TINY HICCUPS TO TITANIC EXPLOSIONS: Tackling Transients in Anomalous X-ray Pulsars	Proposal title
observer	Professor Victoria Kaspi	Principal investigator
object	1E 1547.0-5408	Source name
ra_targ	237.725417	Observer's specified target RA [deg]
dec_targ	-54.306583	Observer's specified target Dec [deg]
ra_nom	237.72246848762	Nominal RA [deg]
dec_nom	-54.311094212355	Nominal Dec [deg]
roll_nom	217.50644781854	Nominal Roll [deg]
revision	2	Processing version of data
ontime	23150.25	Sum of GTIs [s]
livetime	23059.819335938	Livetime [s]
ontime2	23150.25	Sum of GTIs [s]
ontime3	23150.25	Sum of GTIs [s]
ontime5	23150.25	Sum of GTIs [s]
ontime6	23150.25	Sum of GTIs [s]
ontime7	23150.25	Sum of GTIs [s]
ontime8	23150.25	Sum of GTIs [s]
l2events	459336	Number of level 2 events



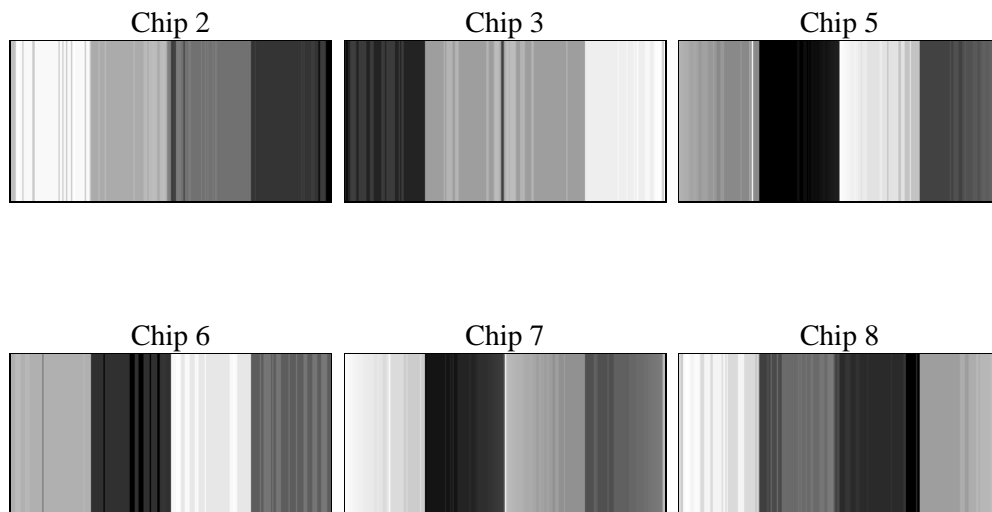
2 OBI

2.1 OBI

2.1.1 Images



2.1.2 Bias



2.1.3 Parameters

obi_num	0	Obi number	sched_exp_time	23000.000000	[s] Scheduled observation exposure time
ascdsver	8.4.4	Processing system revision	ontime	23150.25	Sum of GTIs [s]
caldsver	4.4.9	 	ontime2	23150.25	Sum of GTIs [s]
date	2012-05-25T04:59:34	Date and time of file creation	ontime3	23150.25	Sum of GTIs [s]
revision	2	Processing version of data	ontime5	23150.25	Sum of GTIs [s]
			ontime6	23150.25	Sum of GTIs [s]
			ontime7	23150.25	Sum of GTIs [s]
			ontime8	23150.25	Sum of GTIs [s]
			l1events	685244	Number of level 1 events

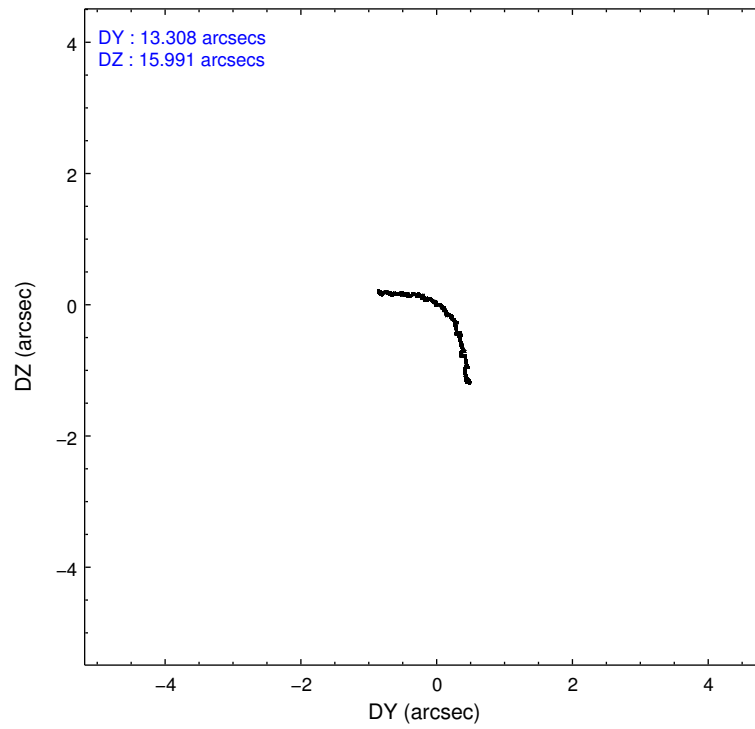
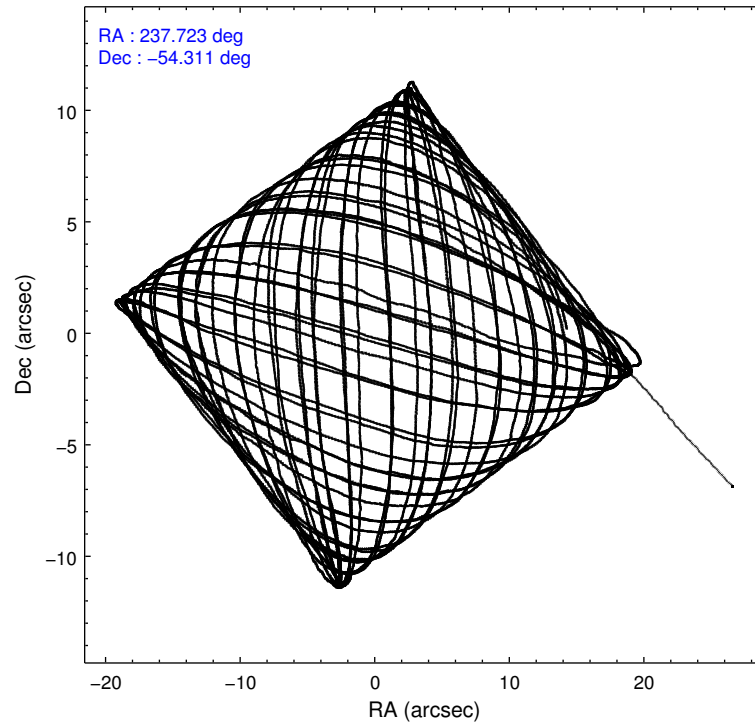
2.1.4 Events

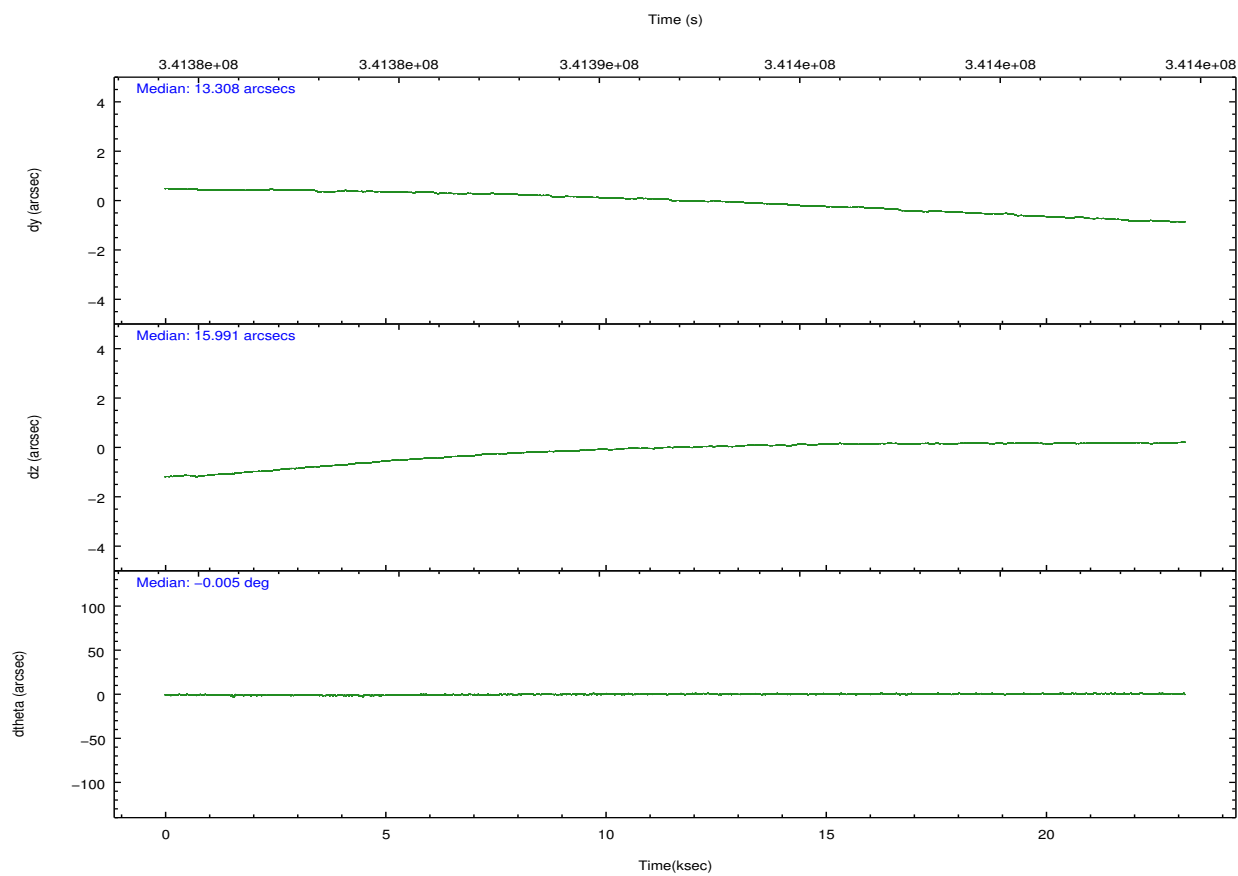
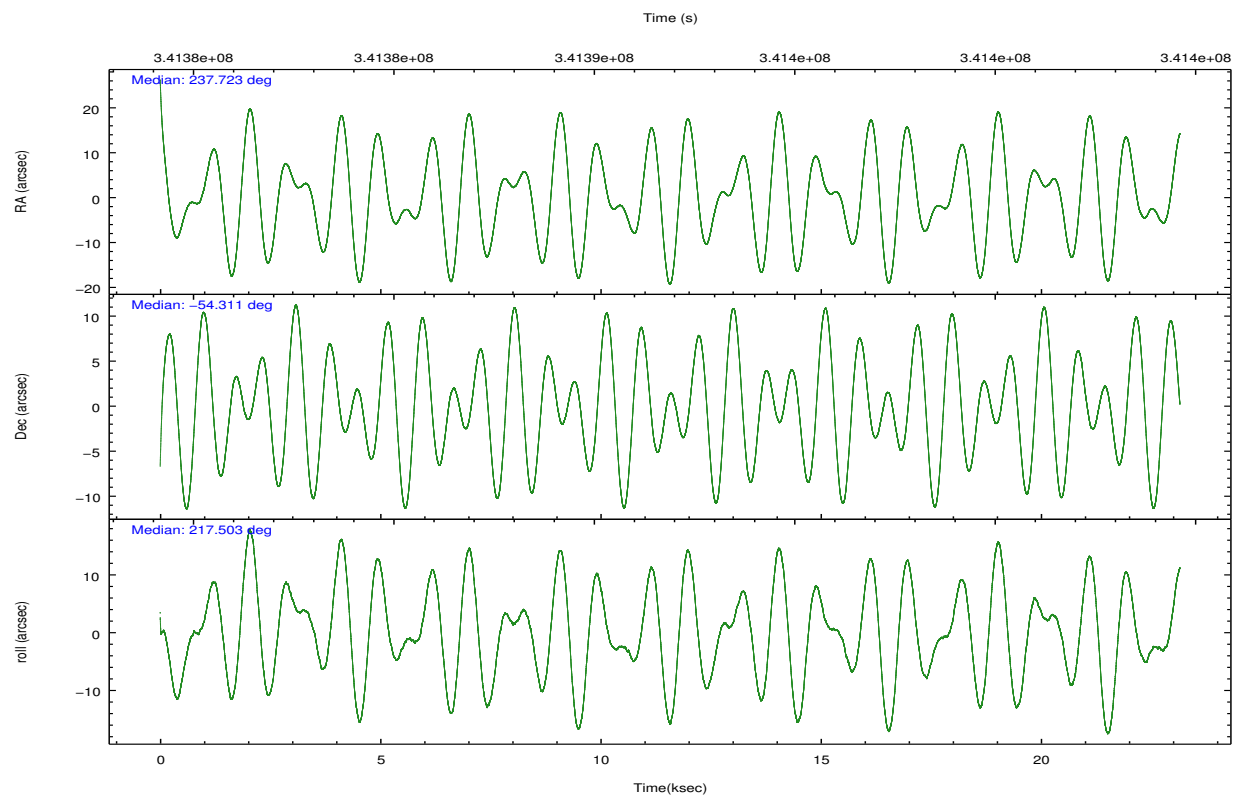
	ccd 2	ccd 3	ccd 5	ccd 6	ccd 7	ccd 8		ccd 2	ccd 3	ccd 5	ccd 6	ccd 7	ccd 8
level 1 events	49840	54753	215536	54924	194072	116119	grade 0 events	5927	6050	22997	5408	16284	20283
rejected events	11784	12862	33306	13559	33805	20615		11%	11%	10%	9%	8%	17%
rejected %	23%	23%	15%	24%	17%	17%	grade 1 events	228	217	414	220	413	459
								0%	0%	0%	0%	0%	0%
							grade 2 events	15597	17607	59261	17213	44133	31559
								31%	32%	27%	31%	22%	27%
							grade 3 events	4841	5675	4234	5297	11438	10741
								9%	10%	1%	9%	5%	9%
							grade 4 events	5035	4918	4044	4974	11343	10281
								10%	8%	1%	9%	5%	8%
							grade 5 events	9588	10450	22480	11079	26565	15306
								19%	19%	10%	20%	13%	13%
							grade 6 events	8624	9836	102106	10733	83896	27490
								17%	17%	47%	19%	43%	23%
							grade 7 events	0	0	0	0	0	0
								0%	0%	0%	0%	0%	0%

2.2 Compared Parameters

Parameter	Planned	Actual	Parameter	Planned	Actual
Instrument	ACIS	ACIS	Obspar format version number	7	7
Detector	ACIS-235678	ACIS-235678	Obspar file type	PREDICTED	ACTUAL
Grating	NONE	NONE	Obspar update status	NONE	UPDATED
Data mode	CC33_FAINT	CC33_FAINT	CCD I0 on	N	N
Observation mode	POINTING	POINTING	CCD I1 on	N	N
[deg] Pointing RA	237.739801	237.7224684876225	CCD I2 on	O2	Y
[deg] Pointing Dec	-54.285717	-54.31109421235494	CCD I3 on	O3	Y
[deg] Pointing Roll	217.363904	217.5064478185378	CCD S0 on	N	N
[mm] SIM focus pos	-0.684267	-0.6828225247311905	CCD S1 on	O1	Y
[mm] SIM defocus	0	0.001444936568705701	CCD S2 on	Y	Y
[mm] SIM translation stage pos	-190.132523	-190.1400660498719	CCD S3 on	Y	Y
[mm] SIM translation stage offset	0	0.00754346686406393	CCD S4 on	Y	Y
[s] Observation start time (MET)	341380465.184000	341379142.72493	CCD S5 on	N	N
Observation start date	2008-10-26T03:53:20	2008-10-26T03:32:22	Number of optional ACIS chips dropped	0	0
[s] Observation end time (MET)	341403465.184000	341403950.80115	On-chip summing requested	N	N
Observation end date	2008-10-26T10:16:40	2008-10-26T10:25:50	Subarray requested	NONE	NONE
Read mode	CONTINUOUS	CONTINUOUS	Alternating exposures requested	N	N
			[s] Primary exposure time	0.000000	0

2.3 Aspect



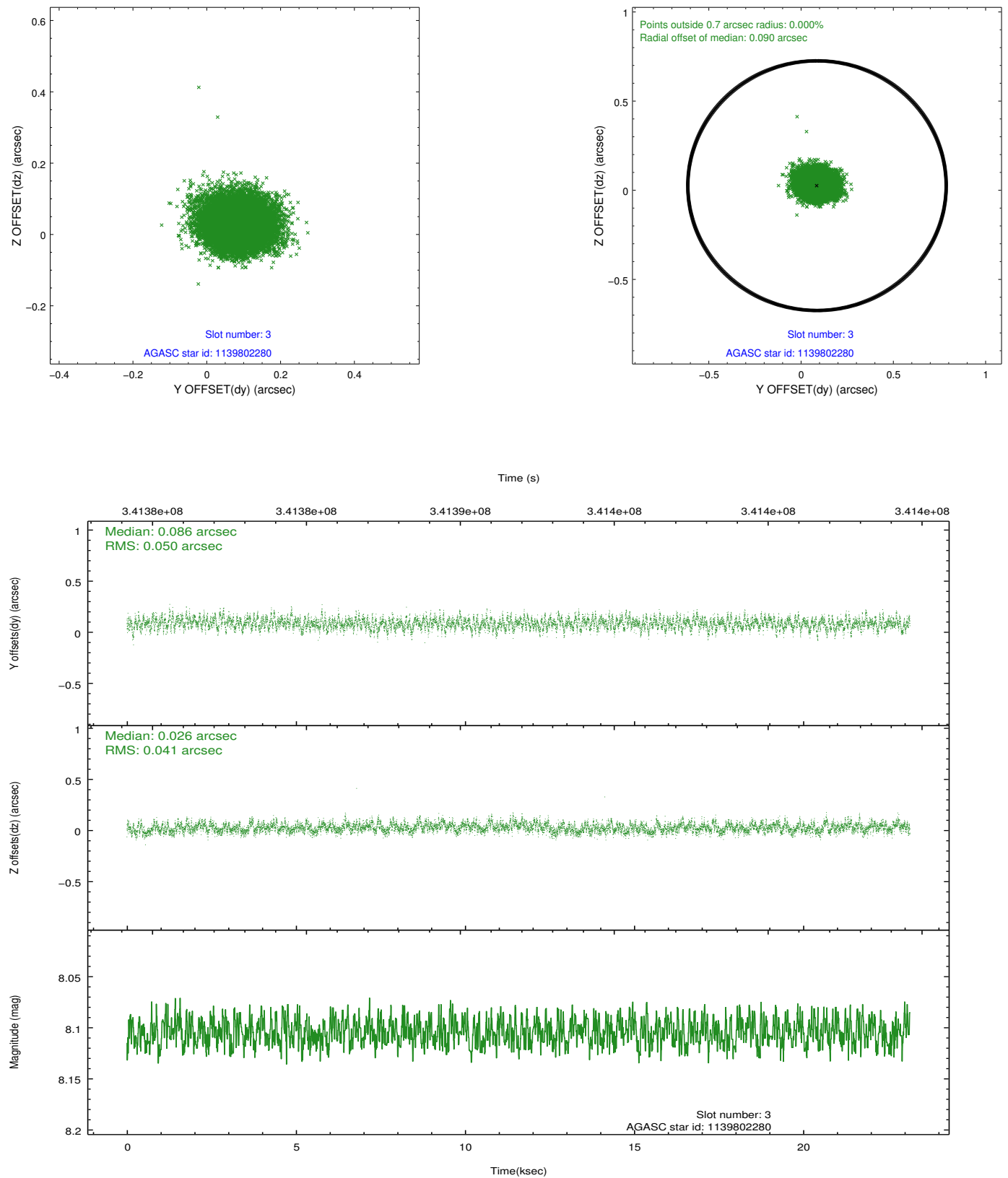


Slot Statistics

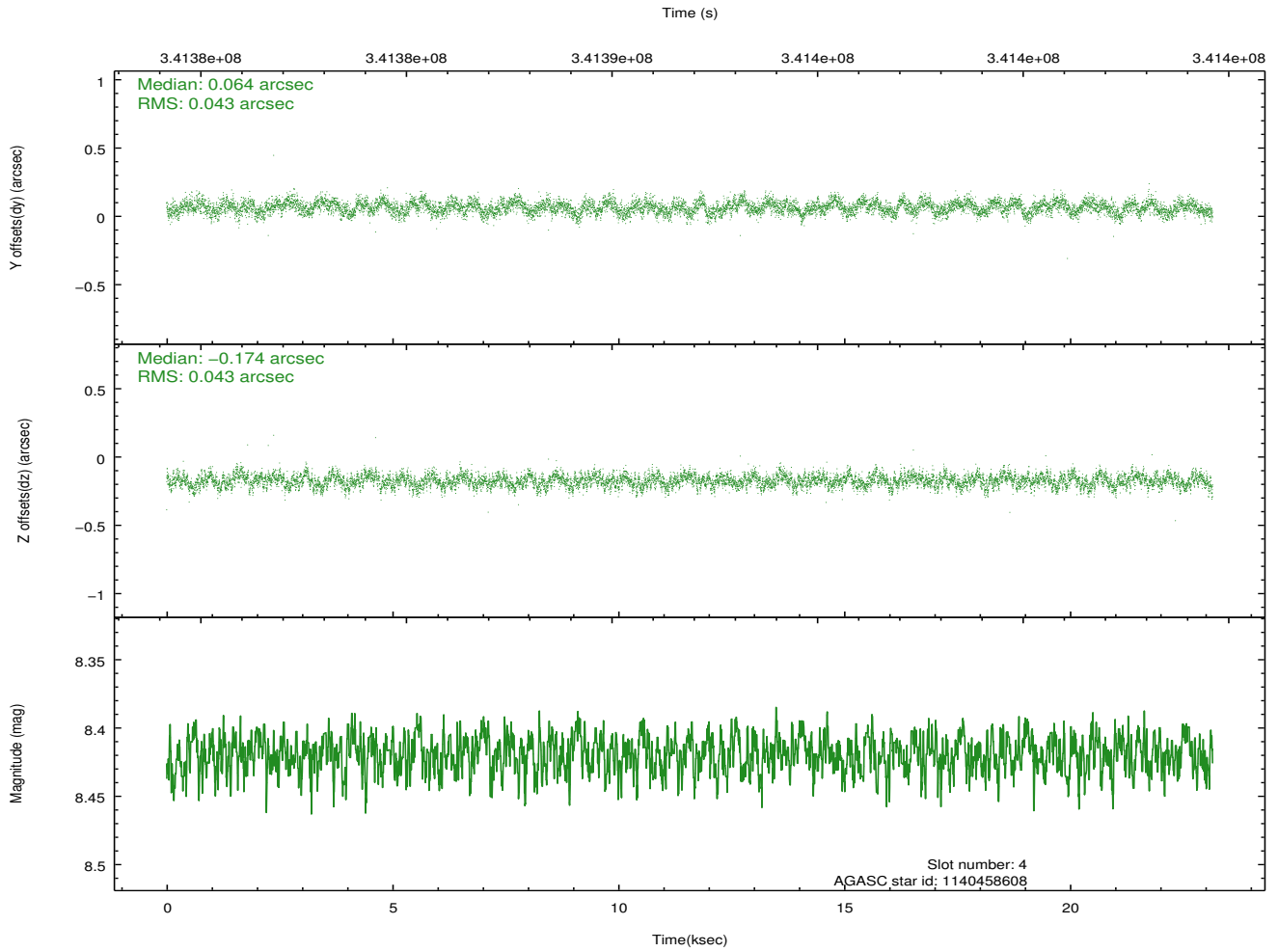
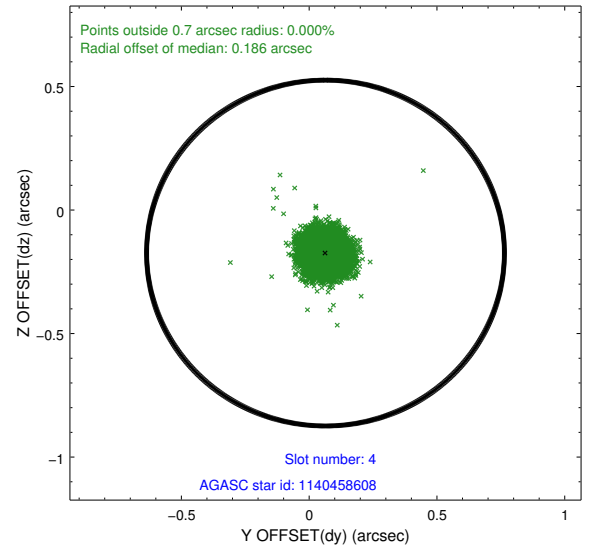
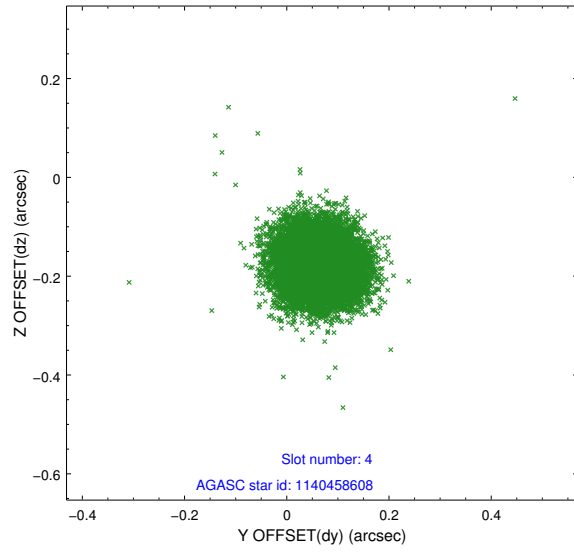
slot	status	id	mag	n_pts	med_dy	med_dz	dr1	dr2	ra	dec	mean_y	mean_z
0	FID	ACIS-S-2	6.88	5647	-0.044	-0.010	0.015	0.028	0.000000	0.000000	-766.20	-1737.22
1	FID	ACIS-S-4	6.96	5648	0.168	0.024	0.030	0.041	0.000000	0.000000	2147.21	171.18
2	FID	ACIS-S-5	6.99	5648	-0.153	-0.007	0.014	0.030	0.000000	0.000000	-1818.98	164.94
3	GUIDE	1139802280	8.10	11290	0.086	0.026	0.068	0.110	236.525595	-54.011505	1456.57	-2325.34
4	GUIDE	1140458608	8.42	11285	0.064	-0.174	0.064	0.102	237.337107	-54.507511	1155.57	125.73
5	GUIDE	1140462520	8.14	11289	0.025	0.092	0.070	0.109	237.718666	-54.642458	814.84	994.49
6	GUIDE	1139941688	9.14	11286	-0.033	-0.040	0.090	0.141	238.371800	-54.158507	-1332.28	449.89
7	GUIDE	1139943608	9.19	11254	-0.147	0.095	0.103	0.168	238.761095	-54.002426	-2326.83	513.55

2.4 Star Slots

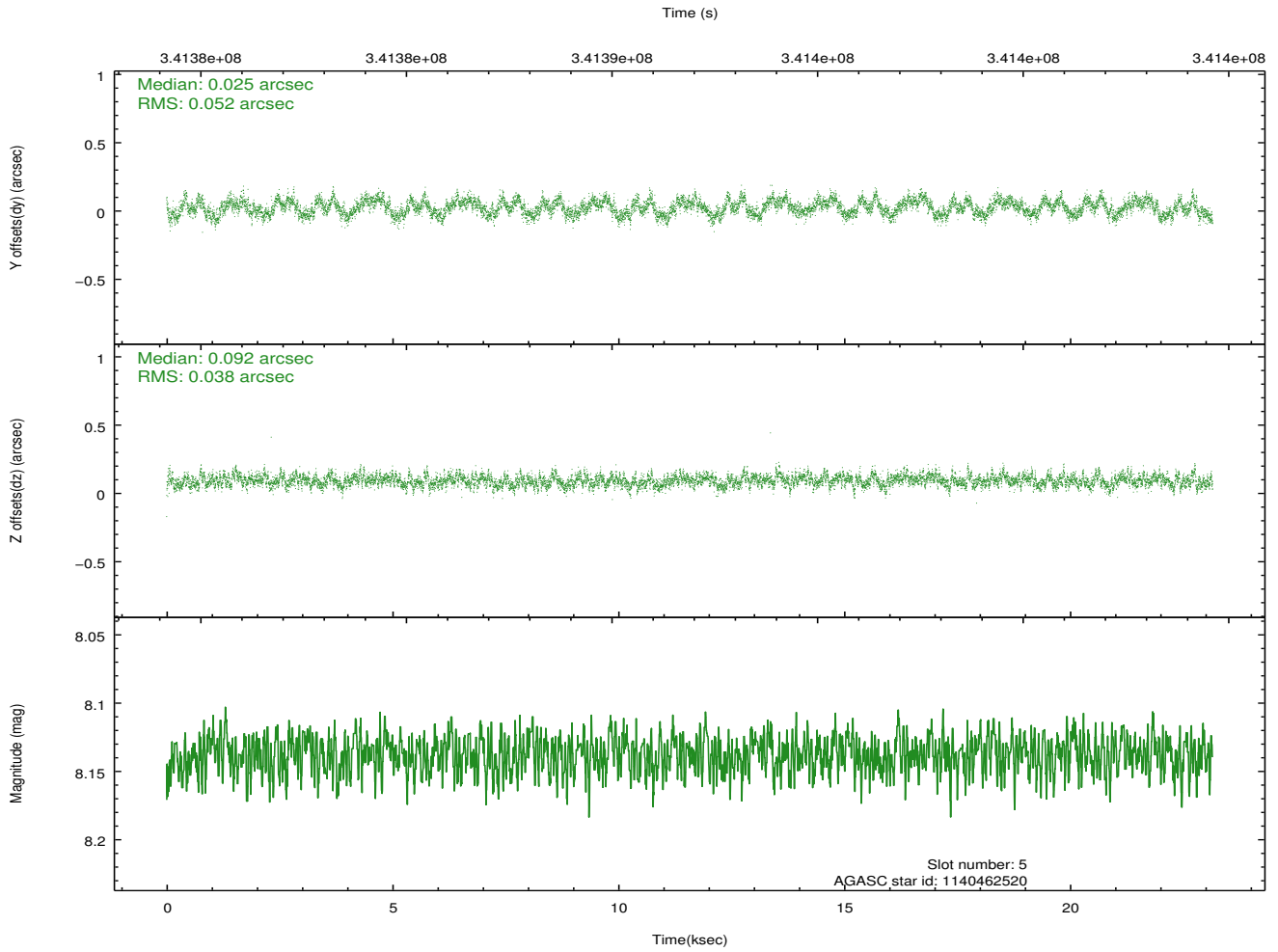
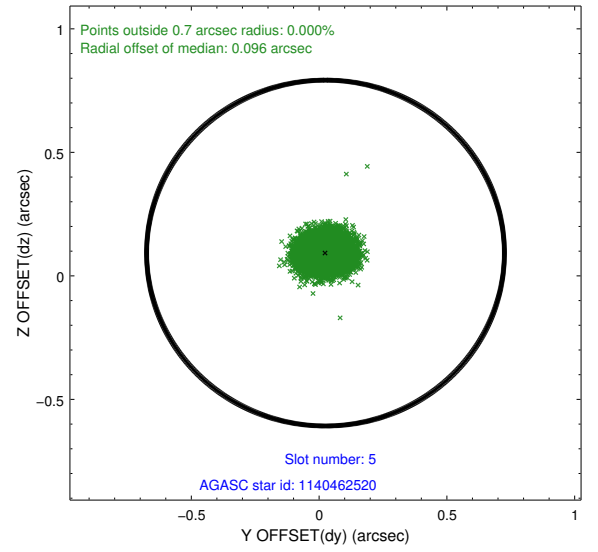
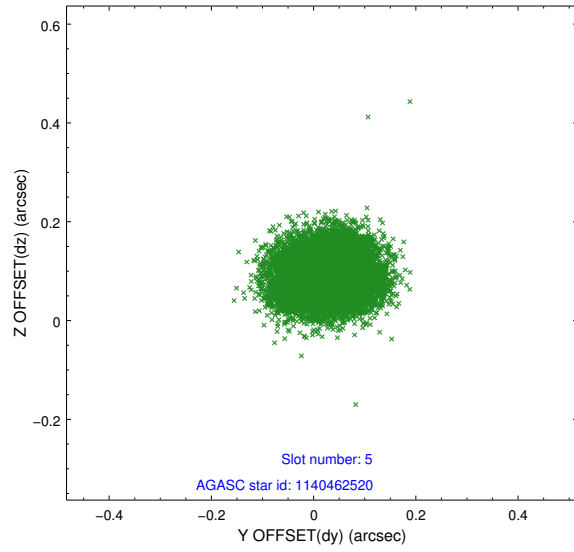
2.4.1 Slot 3



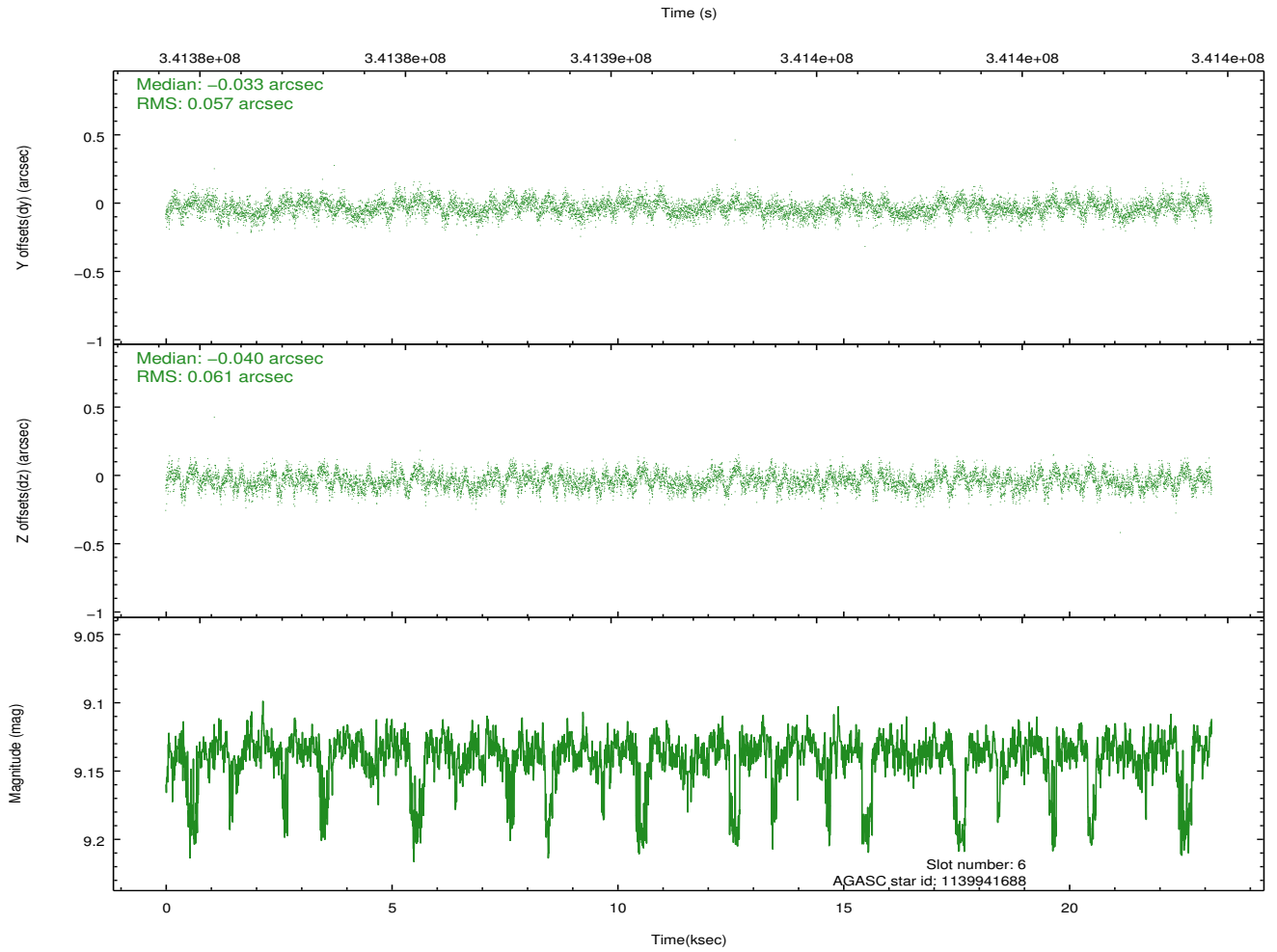
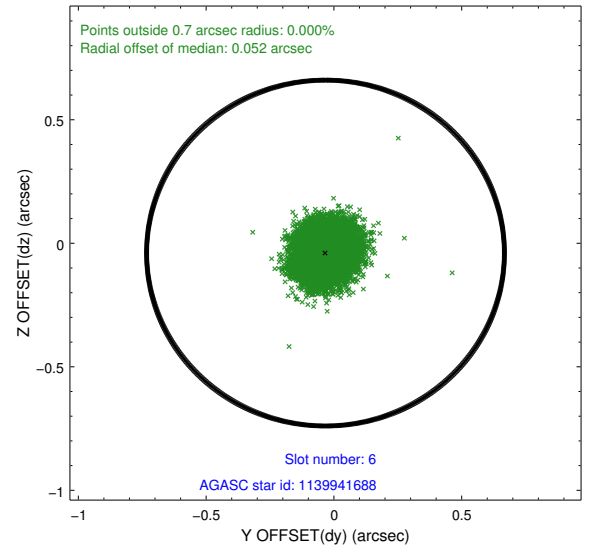
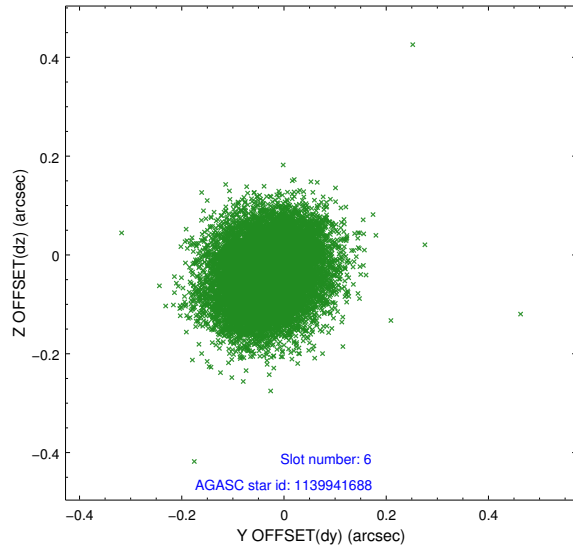
2.4.2 Slot 4



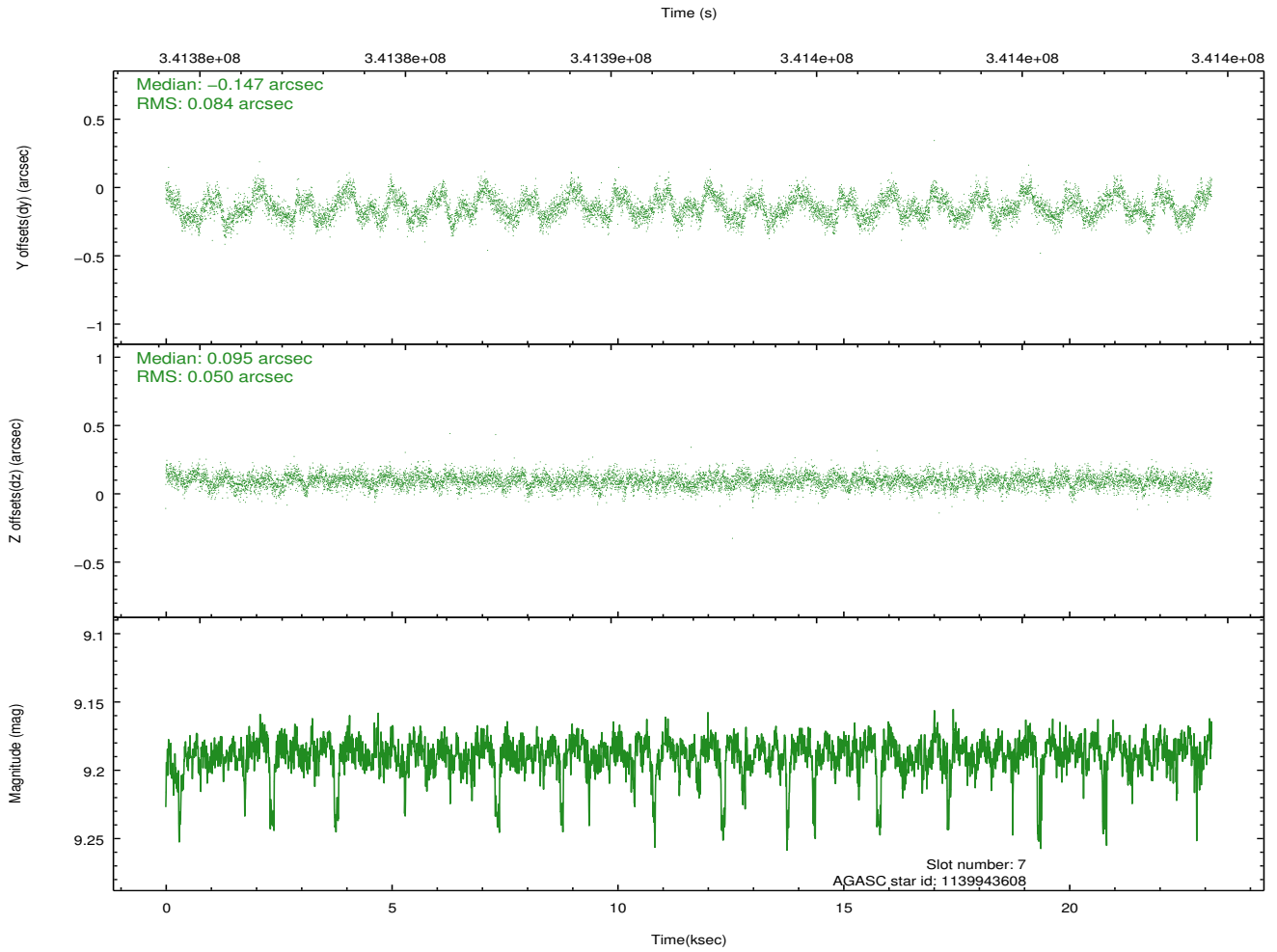
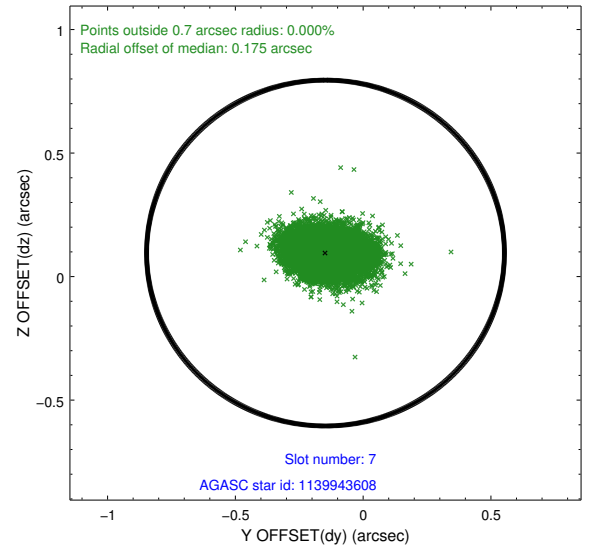
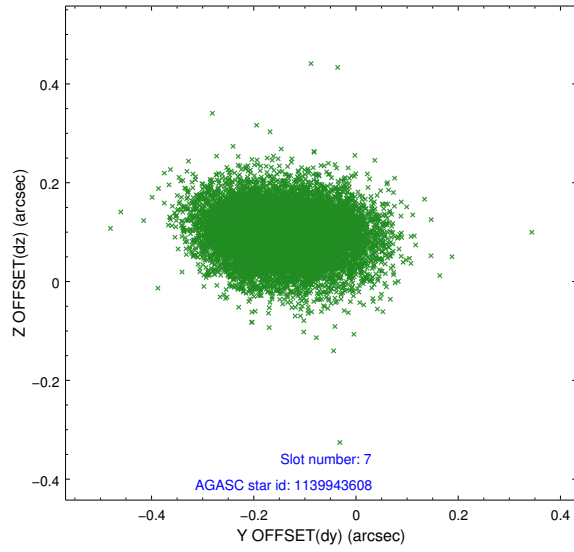
2.4.3 Slot 5



2.4.4 Slot 6

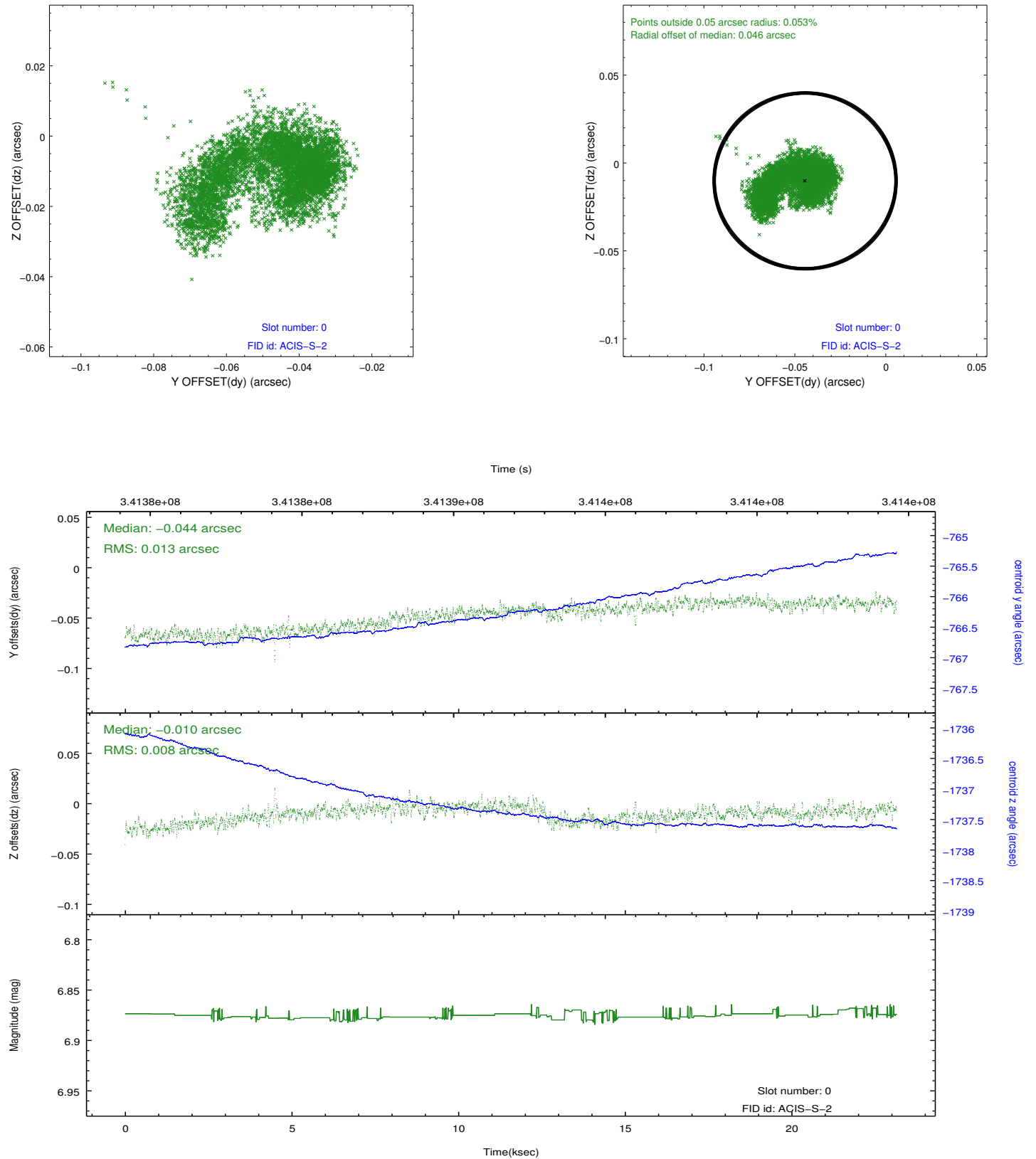


2.4.5 Slot 7

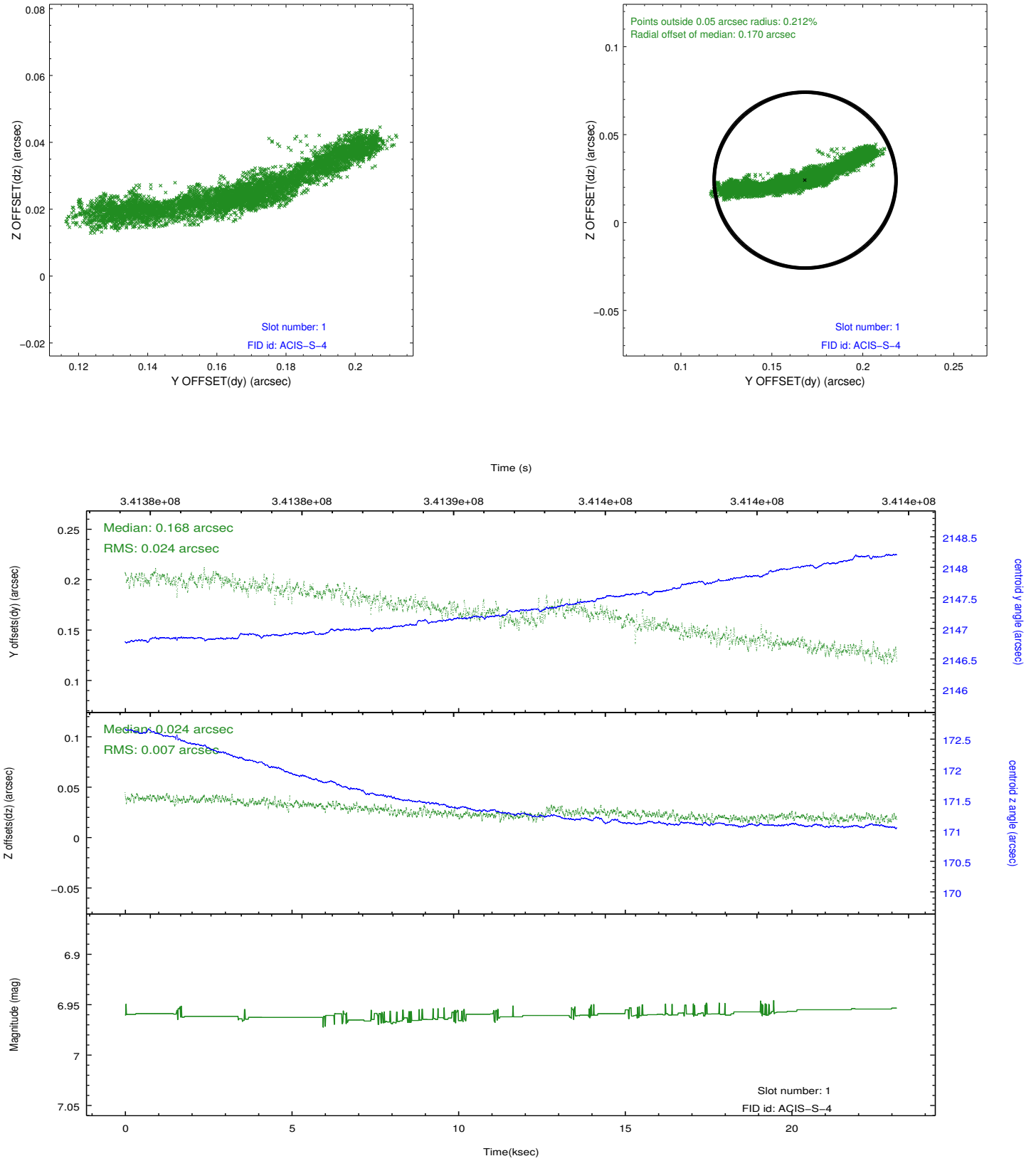


2.5 FID Slots

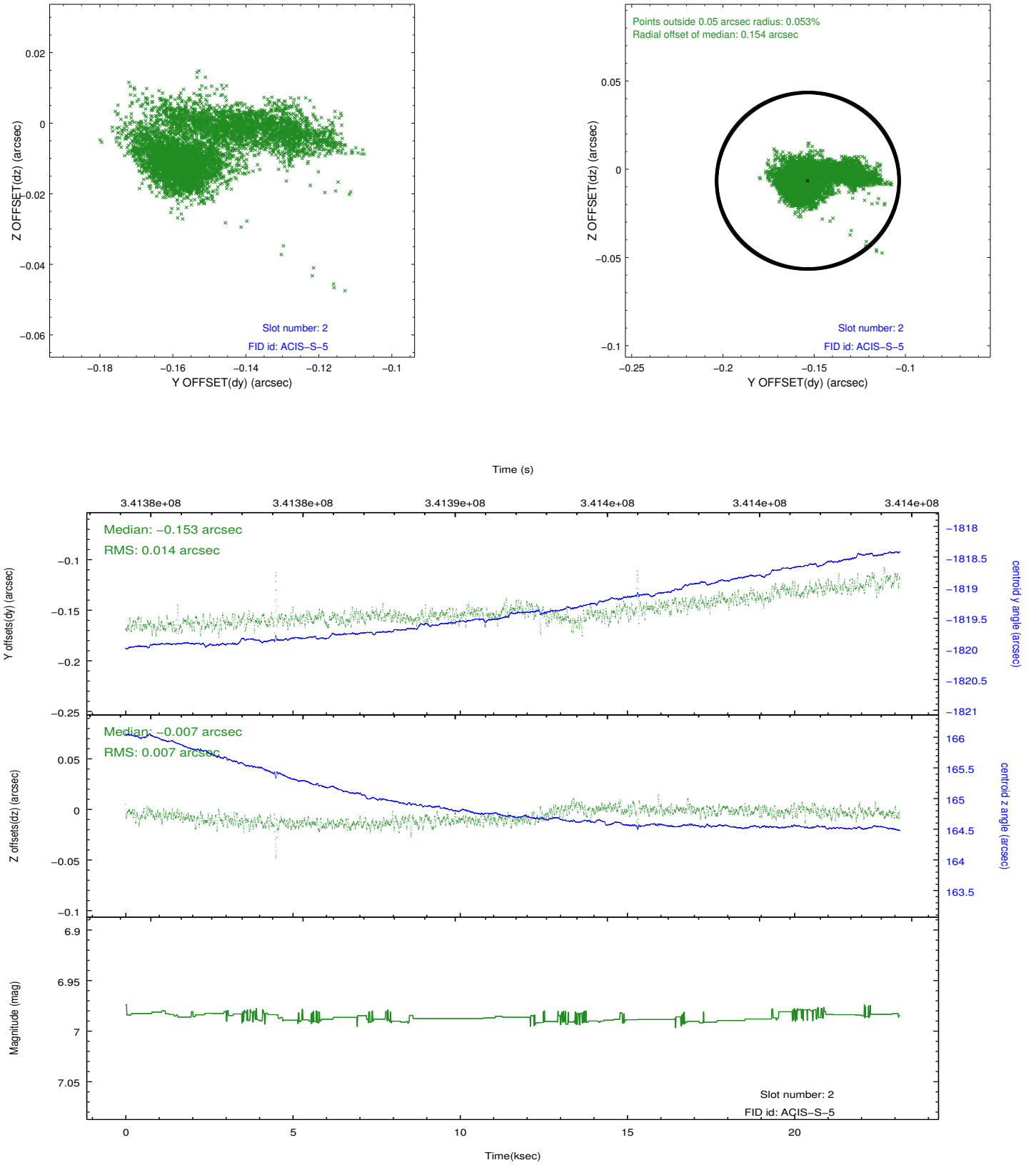
2.5.1 Slot 0



2.5.2 Slot 1



2.5.3 Slot 2



A Summary

A.1 Status

V&V Scientist	Joy Nichols
V&V Date (YYYY-MM-DD)	2012.05.25
V&V Edition	1
V&V Disposition and Status	OK
V&V Charge Time	23.15025

A.2 Comments