

V&V Reference Report

L2 ASCDS Version : 8.4.5

Observation 844 - L2 Version 4
Chandra X-Ray Center

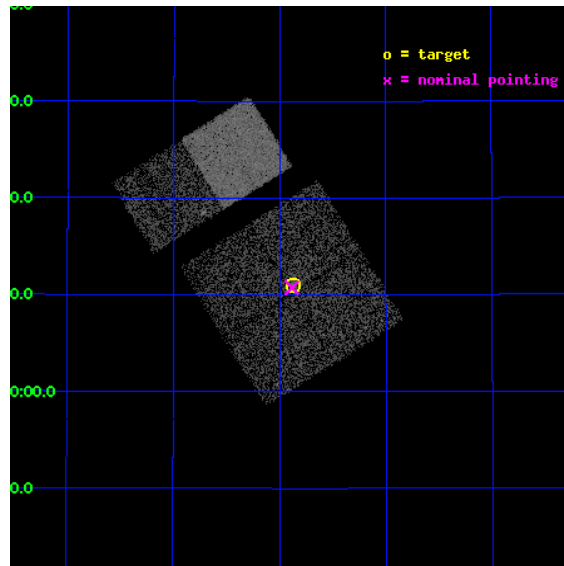
L2 Processing Date : Aug 22 2012

Contents

1	Front	2
2	OBI	3
2.1	OBI	3
2.1.1	Images	3
2.1.2	Bias	3
2.1.3	Parameters	4
2.1.4	Events	4
2.2	Compared Parameters	5
2.3	Aspect	6
2.4	Star Slots	9
2.4.1	Slot 3	9
2.4.2	Slot 4	10
2.4.3	Slot 5	11
2.4.4	Slot 6	12
2.4.5	Slot 7	13
2.5	FID Slots	14
2.5.1	Slot 0	14
2.5.2	Slot 1	15
2.5.3	Slot 2	16
A	Summary	17
A.1	Status	17
A.2	Comments	17

1 Front

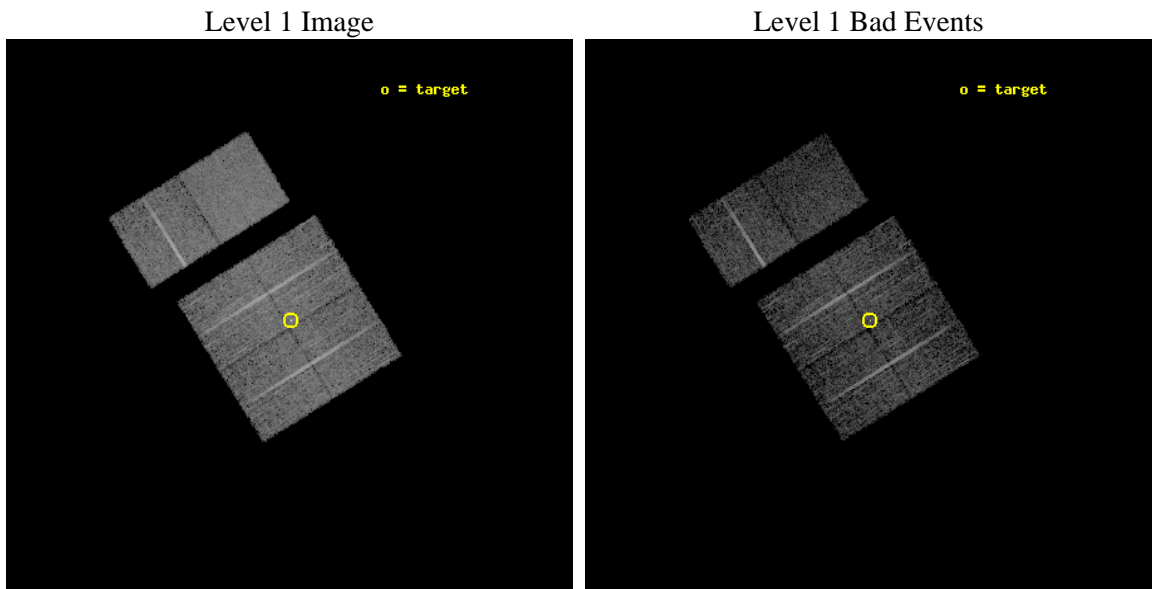
seq_num	700149	Sequence number
obs_id	844	Observation id
title	THE X-RAY CLUSTER ENVIRONMENT OF BLAZARS	Proposal title
observer	Dr. Joseph Pesce	Principal investigator
object	1ES 2321+419	Source name
dtcycle	0	
cycle	P	events from which exps? Prim/Second/Both
ra_targ	350.967083	Observer's specified target RA [deg]
dec_targ	42.183056	Observer's specified target Dec [deg]
ra_nom	350.97113422046	Nominal RA [deg]
dec_nom	42.17876342963	Nominal Dec [deg]
roll_nom	328.15384968155	Nominal Roll [deg]
revision	4	Processing version of data
ontime	4751.9293126538	Sum of GTIs [s]
livetime	4691.7575224287	Livetime [s]
ontime0	4751.8061926514	Sum of GTIs [s]
ontime1	4751.8472326547	Sum of GTIs [s]
ontime2	4751.8882726505	Sum of GTIs [s]
ontime3	4751.9293126538	Sum of GTIs [s]
ontime6	4748.7590442076	Sum of GTIs [s]
ontime7	4751.9703526497	Sum of GTIs [s]
l2events	35935	Number of level 2 events



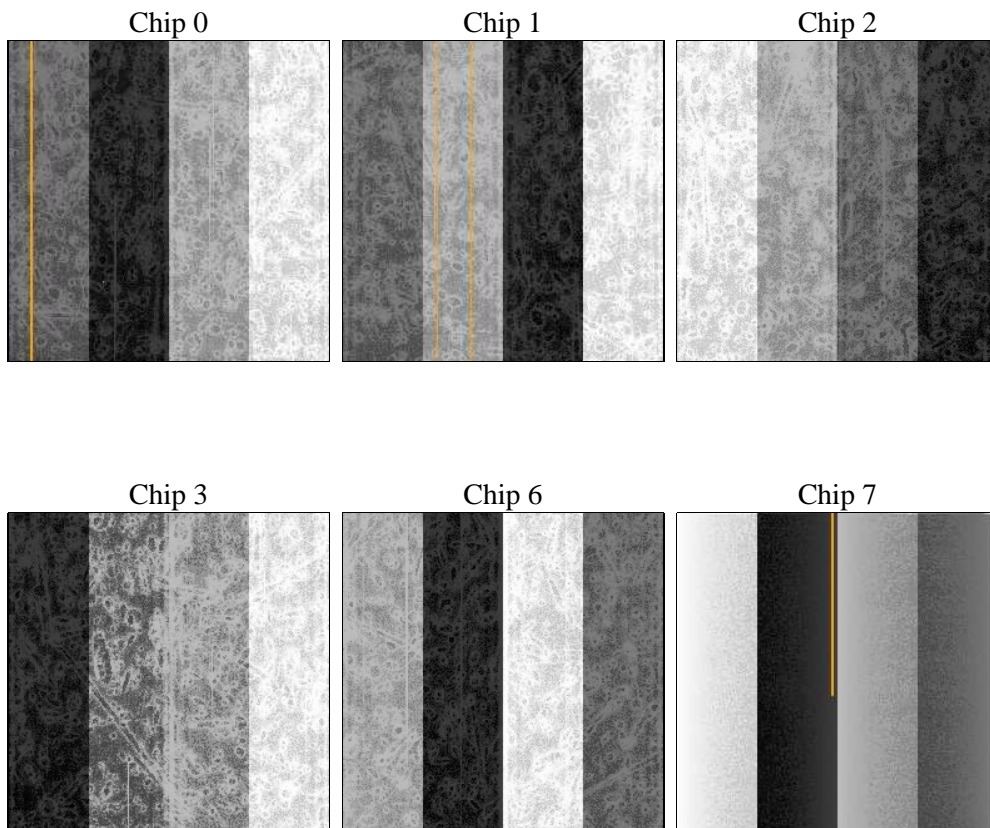
2 OBI

2.1 OBI

2.1.1 Images



2.1.2 Bias



2.1.3 Parameters

obi_num	0	Obi number	sched_exp_time	5000.000000	[s] Scheduled observation exposure time
ascdsver	8.4.5	Processing system revision	ontime	4751.9293126538	Sum of GTIs [s]
caldsver	4.5.1.1	 	ontime0	4751.8061926514	Sum of GTIs [s]
date	2012-08-22T12:57:41	Date and time of file creation	ontime1	4751.8472326547	Sum of GTIs [s]
revision	4	Processing version of data	ontime2	4751.8882726505	Sum of GTIs [s]
			ontime3	4751.9293126538	Sum of GTIs [s]
			ontime6	4748.7590442076	Sum of GTIs [s]
			ontime7	4751.9703526497	Sum of GTIs [s]
			l1events	232251	Number of level 1 events

2.1.4 Events

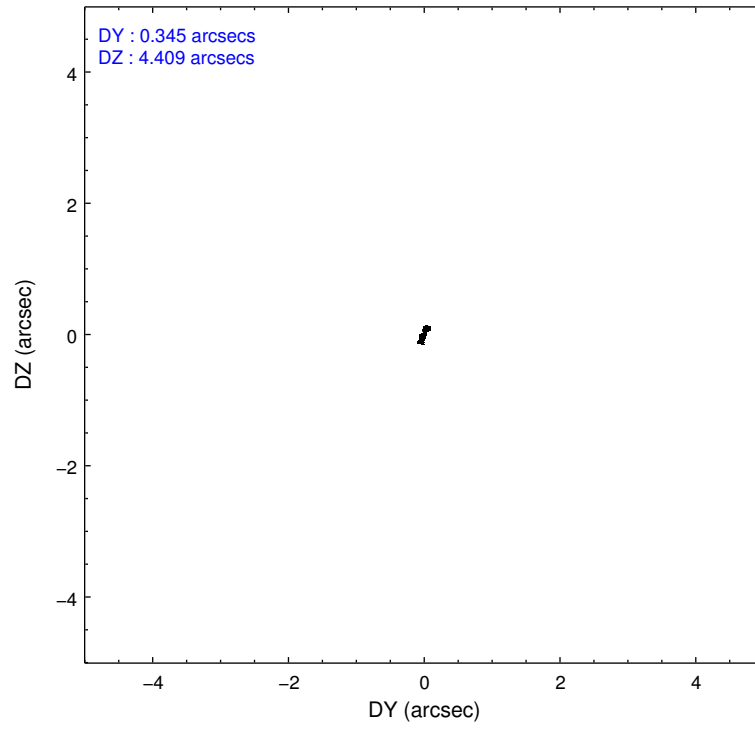
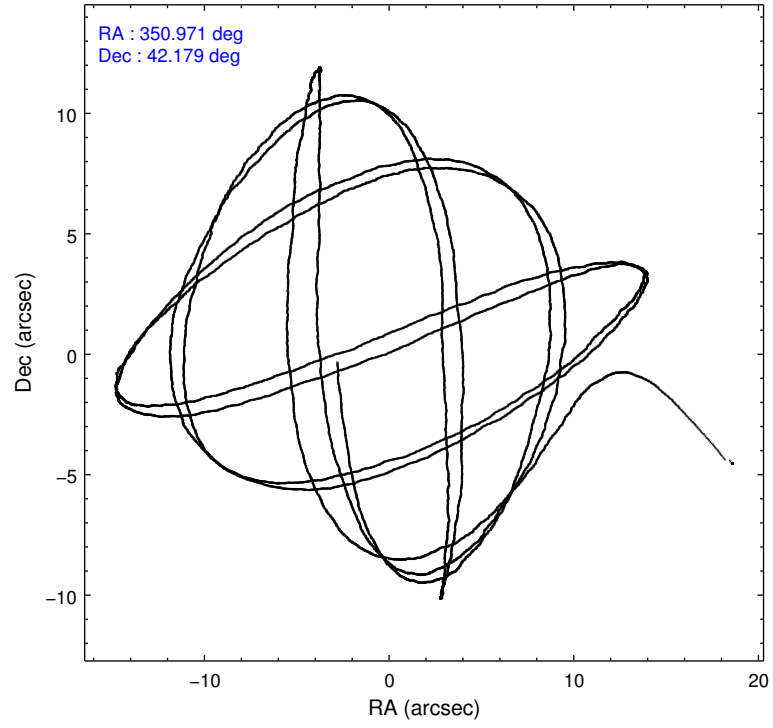
	ccd 0	ccd 1	ccd 2	ccd 3	ccd 6	ccd 7		ccd 0	ccd 1	ccd 2	ccd 3	ccd 6	ccd 7
level 1 events	34371	34784	40001	41337	38926	42832	grade 0 events	1863	1949	1631	2449	1607	1795
rejected events	30236	30363	36183	36215	34957	24571		5%	5%	4%	5%	4%	4%
rejected %	87%	87%	90%	87%	89%	57%	grade 1 events	13	19	16	173	19	44
								0%	0%	0%	0%	0%	0%
							grade 2 events	739	784	819	959	815	3692
								2%	2%	2%	2%	2%	8%
							grade 3 events	424	464	386	496	409	1724
								1%	1%	0%	1%	1%	4%
							grade 4 events	418	460	323	446	427	1650
								1%	1%	0%	1%	1%	3%
							grade 5 events	1145	1240	1091	1427	1389	4172
								3%	3%	2%	3%	3%	9%
							grade 6 events	699	774	661	783	719	9421
								2%	2%	1%	1%	1%	21%
							grade 7 events	29070	29094	35074	34604	33541	20334
								84%	83%	87%	83%	86%	47%

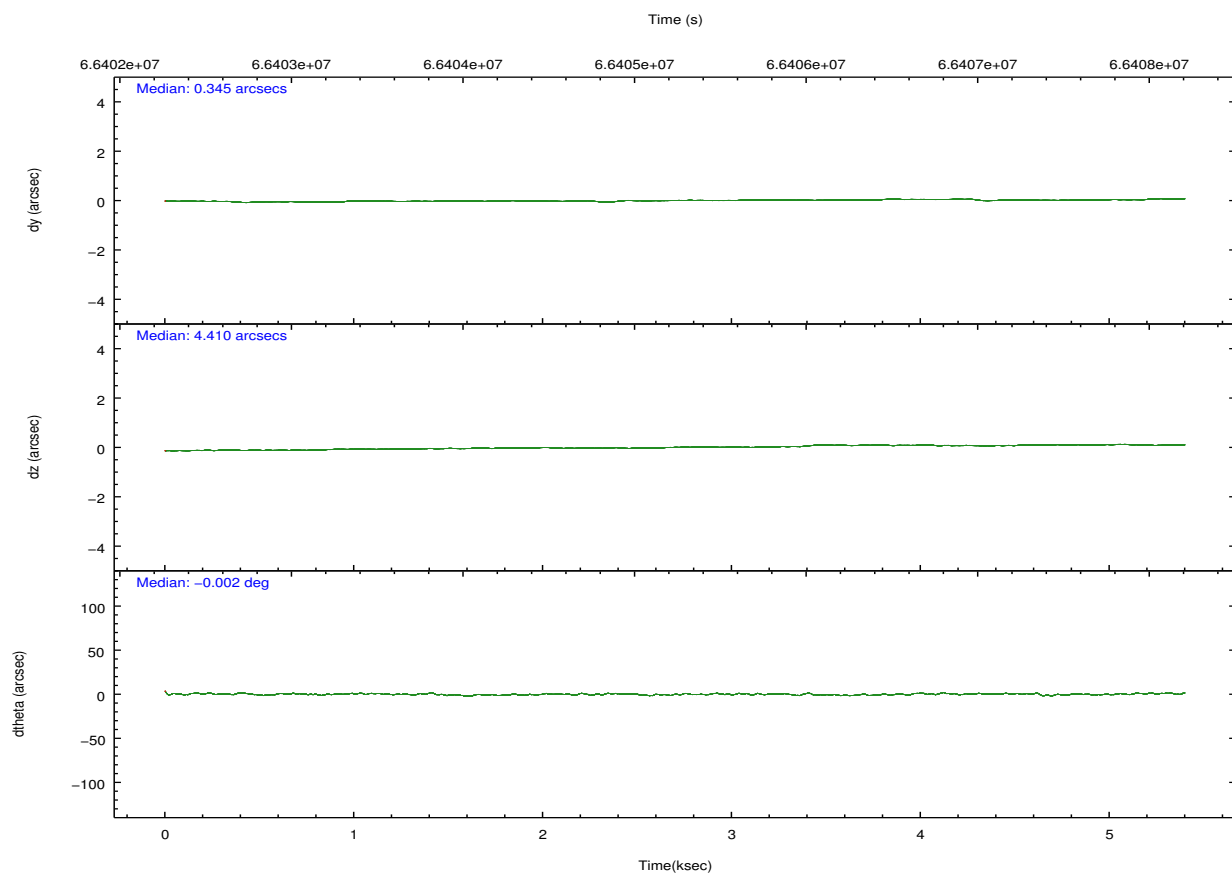
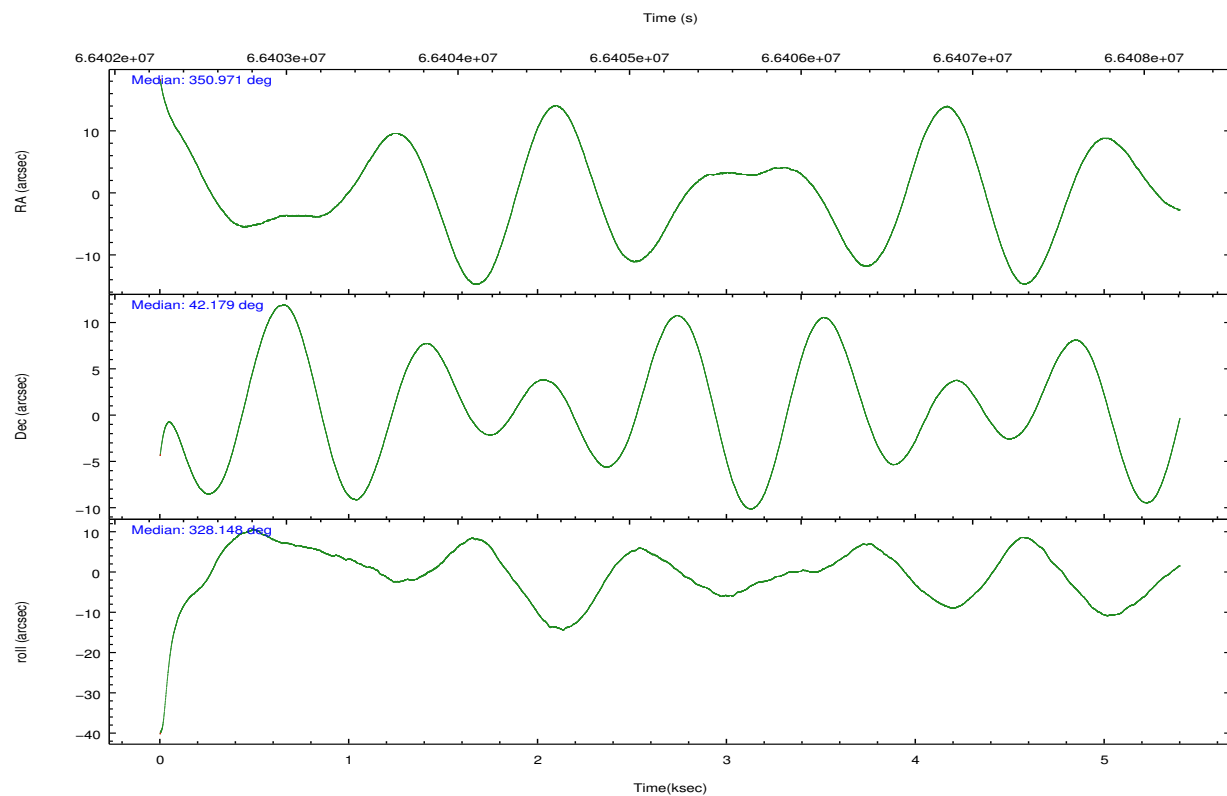
2.2 Compared Parameters

Parameter	Planned	Actual
Instrument	ACIS	ACIS
Detector	ACIS-012367	ACIS-012367
Grating	NONE	NONE
Data mode	FAINT	FAINT
Observation mode	POINTING	POINTING
[deg] Pointing RA	350.933752	350.9711342204574
[deg] Pointing Dec	42.180030	42.17876342962956
[deg] Pointing Roll	327.970336	328.1538496815471
[mm] SIM focus pos	-0.782348	-0.7809083437167272
[mm] SIM defocus	0	0.001439871863259334
[mm] SIM translation stage pos	-233.592463	-233.5874344608287
[mm] SIM translation stage offset	0	-0.005018542100998502
[s] Observation start time (MET)	66402938.184000	66401163.693874
Observation start date	2000-02-08T13:14:34	2000-02-08T12:46:03
[s] Observation end time (MET)	66407938.184000	66408271.556633
Observation end date	2000-02-08T14:37:54	2000-02-08T14:44:31
Read mode	TIMED	TIMED

Parameter	Planned	Actual
Obspar format version number	7	7
Obspar file type	PREDICTED	ACTUAL
Obspar update status	NONE	UPDATED
Number of optional ACIS chips dropped	0	0
On-chip summing requested	N	N
Subarray requested	NONE	NONE
Alternating exposures requested	N	N
[s] Primary exposure time	0.000000	3.2

2.3 Aspect



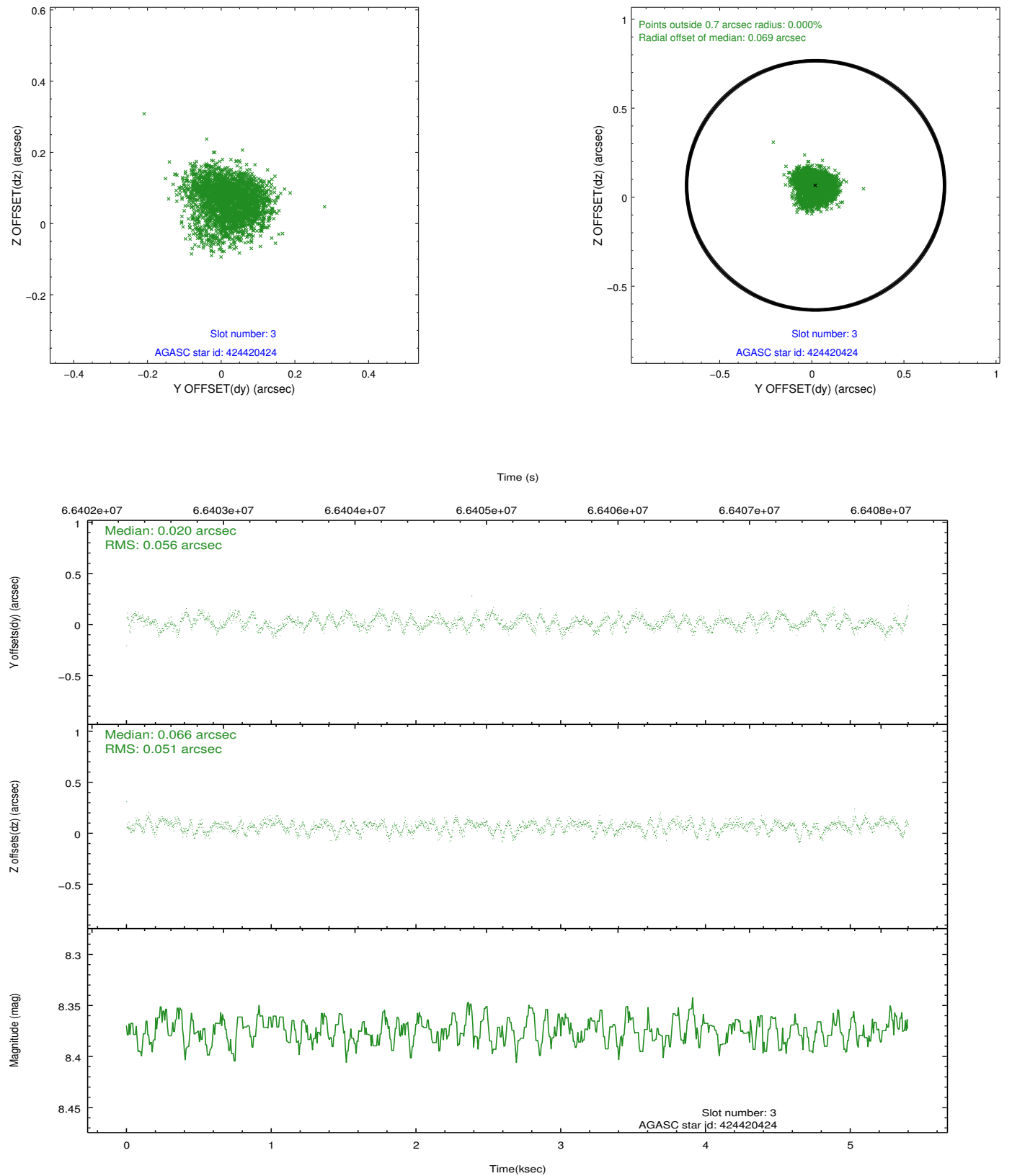


Slot Statistics

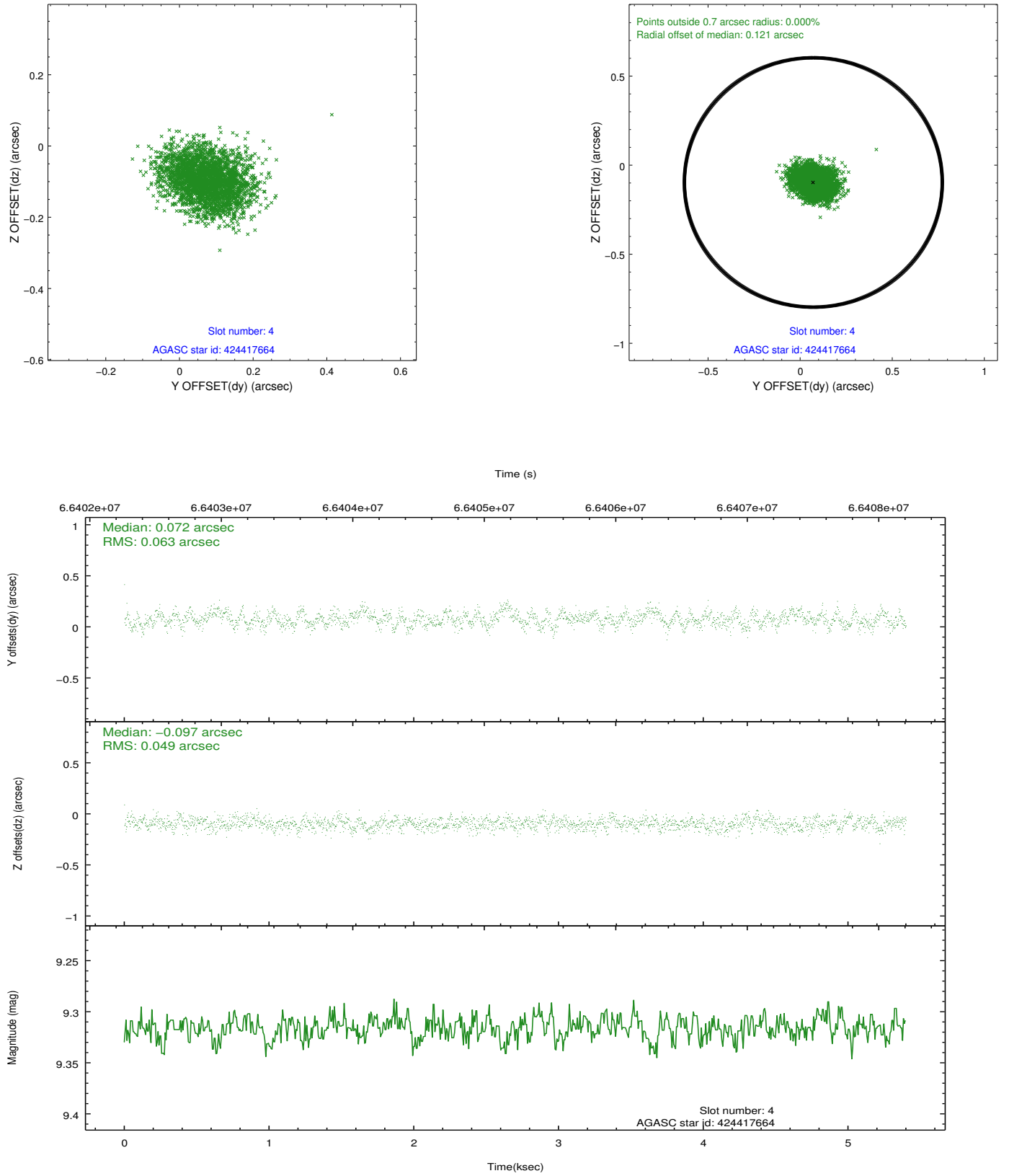
slot	status	id	mag	n_pts	med_dy	med_dz	dr1	dr2	ra	dec	mean_y	mean_z
0	FID	ACIS-I-2	7.15	1318	-0.029	-0.017	0.009	0.016	0.000000	0.000000	-754.68	-834.11
1	FID	ACIS-I-4	7.19	1318	-0.028	0.030	0.006	0.012	0.000000	0.000000	2158.88	1071.54
2	FID	ACIS-I-5	7.23	1318	-0.044	0.055	0.009	0.015	0.000000	0.000000	-1807.08	1070.69
3	GUIDE	424420424	8.37	2635	0.020	0.066	0.081	0.126	351.659112	42.555533	909.60	2173.56
4	GUIDE	424417664	9.32	2634	0.072	-0.097	0.085	0.136	350.872629	41.636525	899.25	-1744.86
5	GUIDE	424411280	9.26	2633	0.012	-0.053	0.092	0.152	350.926285	41.535710	1214.11	-1977.47
6	GUIDE	424415000	9.60	2633	-0.108	0.090	0.089	0.143	350.679481	42.595817	-1365.06	911.89
7	GUIDE	424412760	9.84	2632	-0.005	-0.001	0.108	0.178	350.578041	42.476776	-1368.54	406.88

2.4 Star Slots

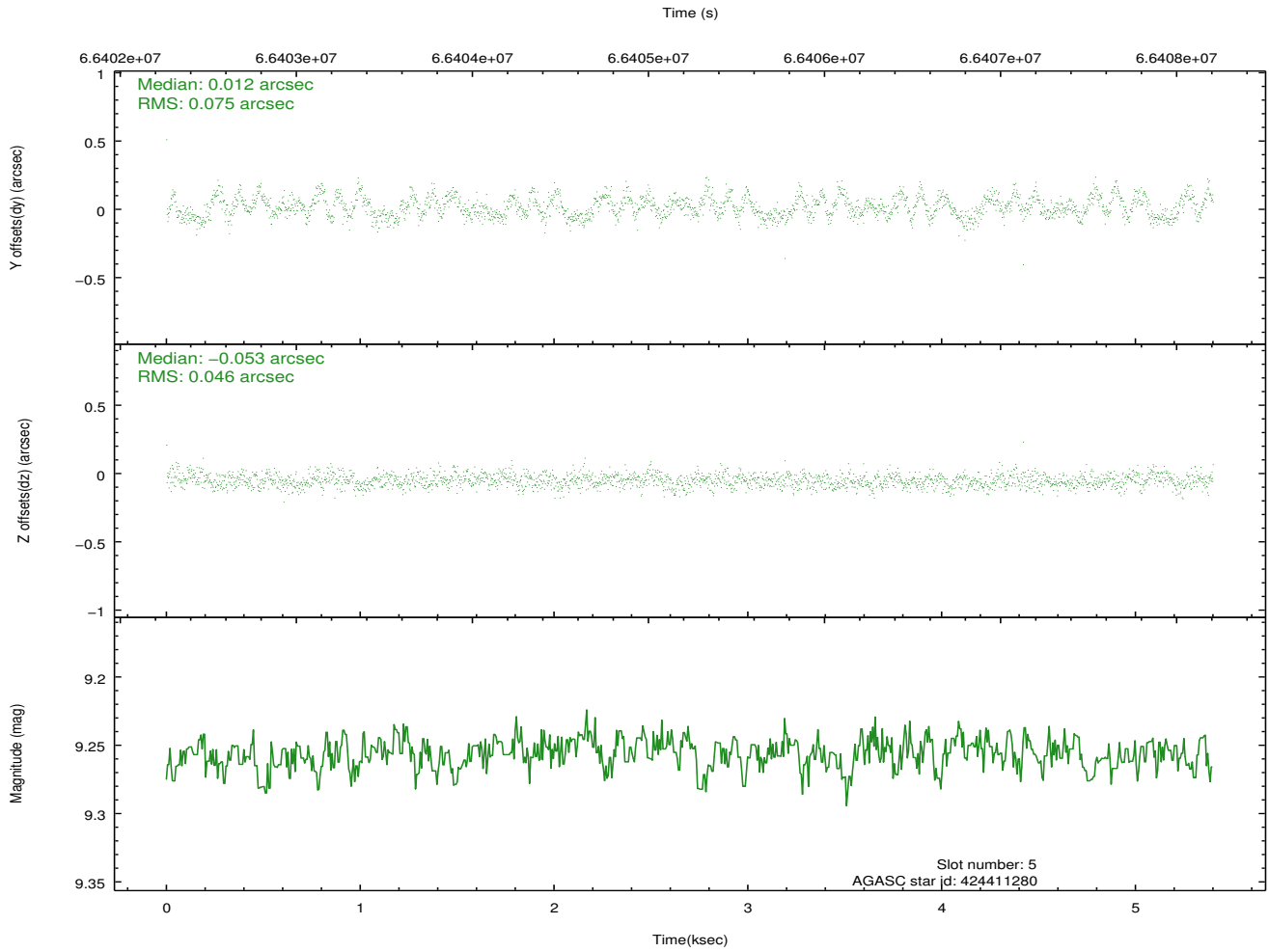
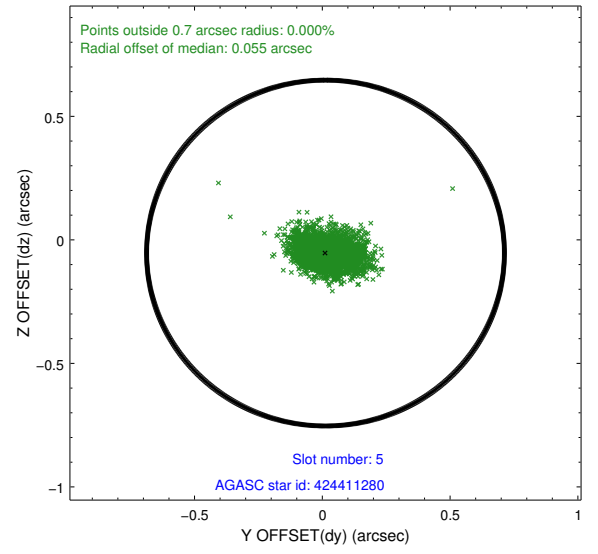
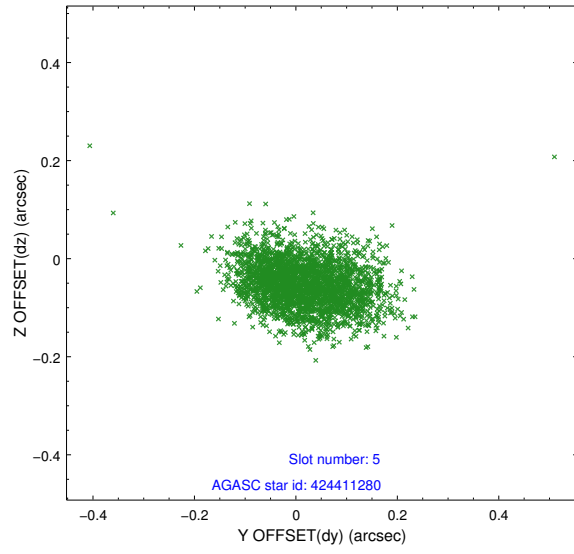
2.4.1 Slot 3



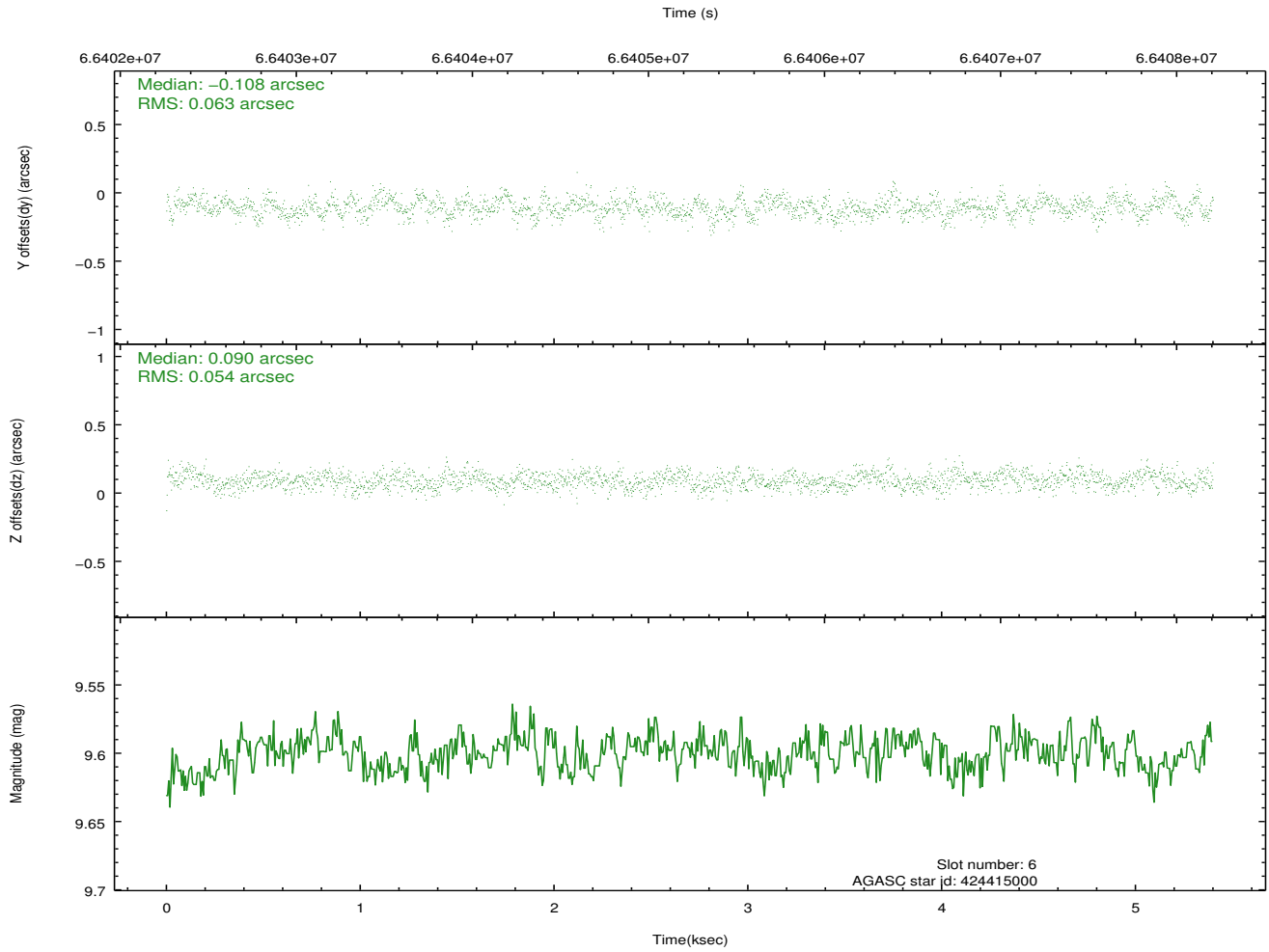
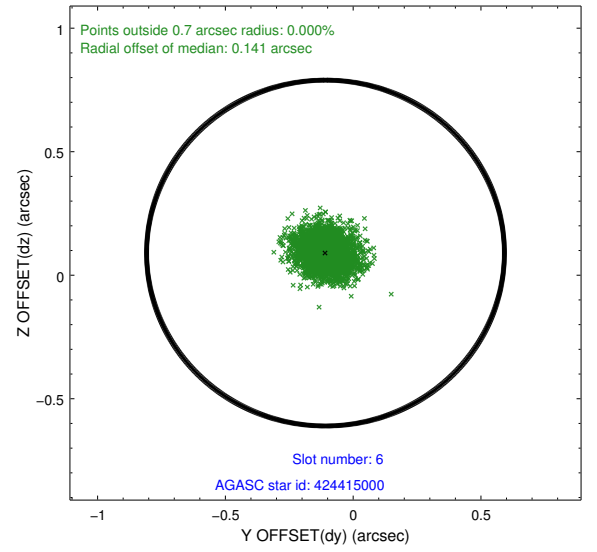
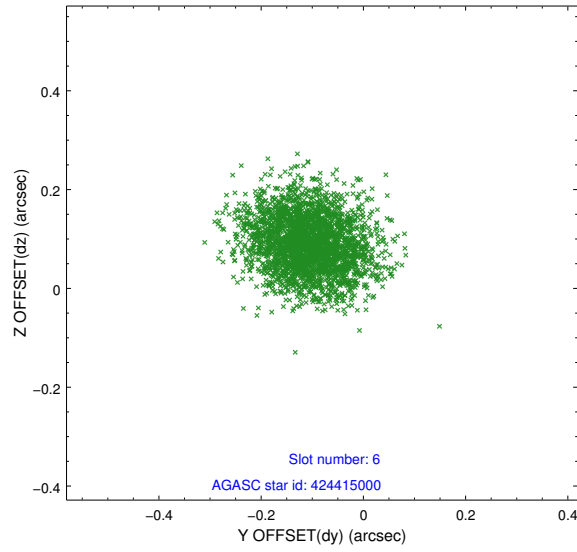
2.4.2 Slot 4



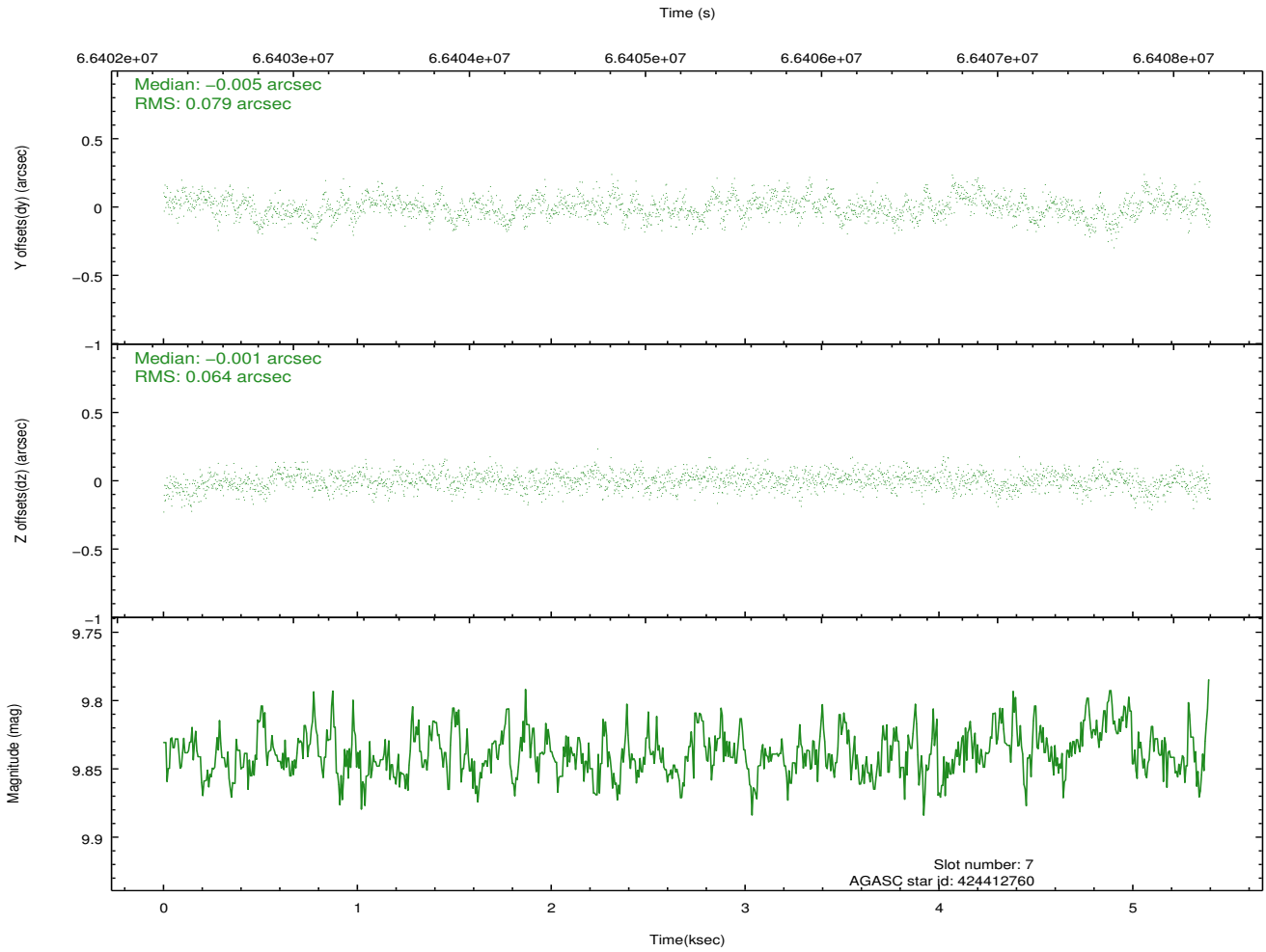
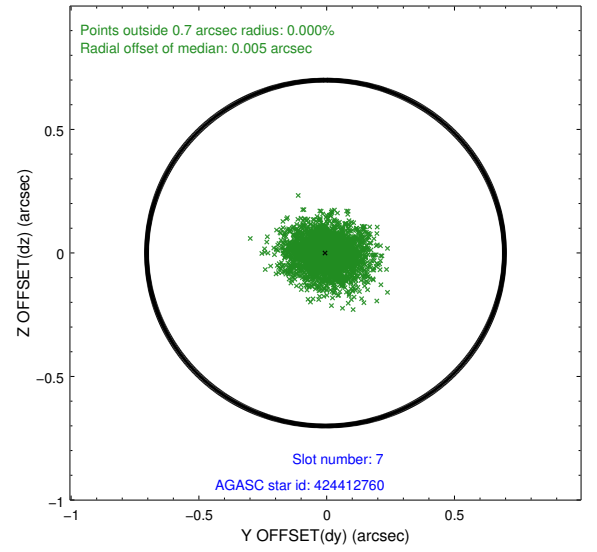
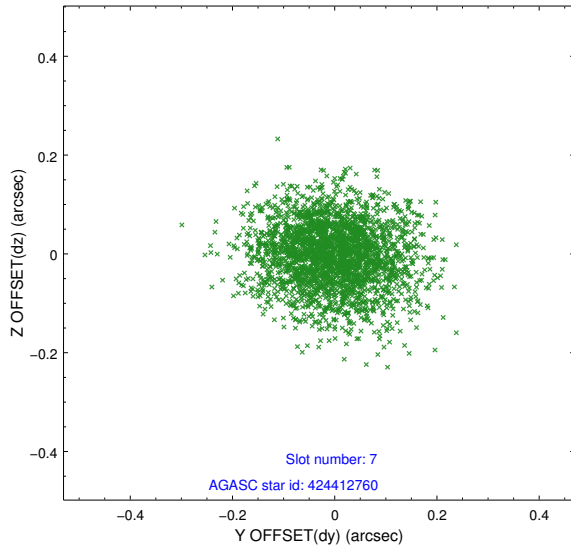
2.4.3 Slot 5



2.4.4 Slot 6

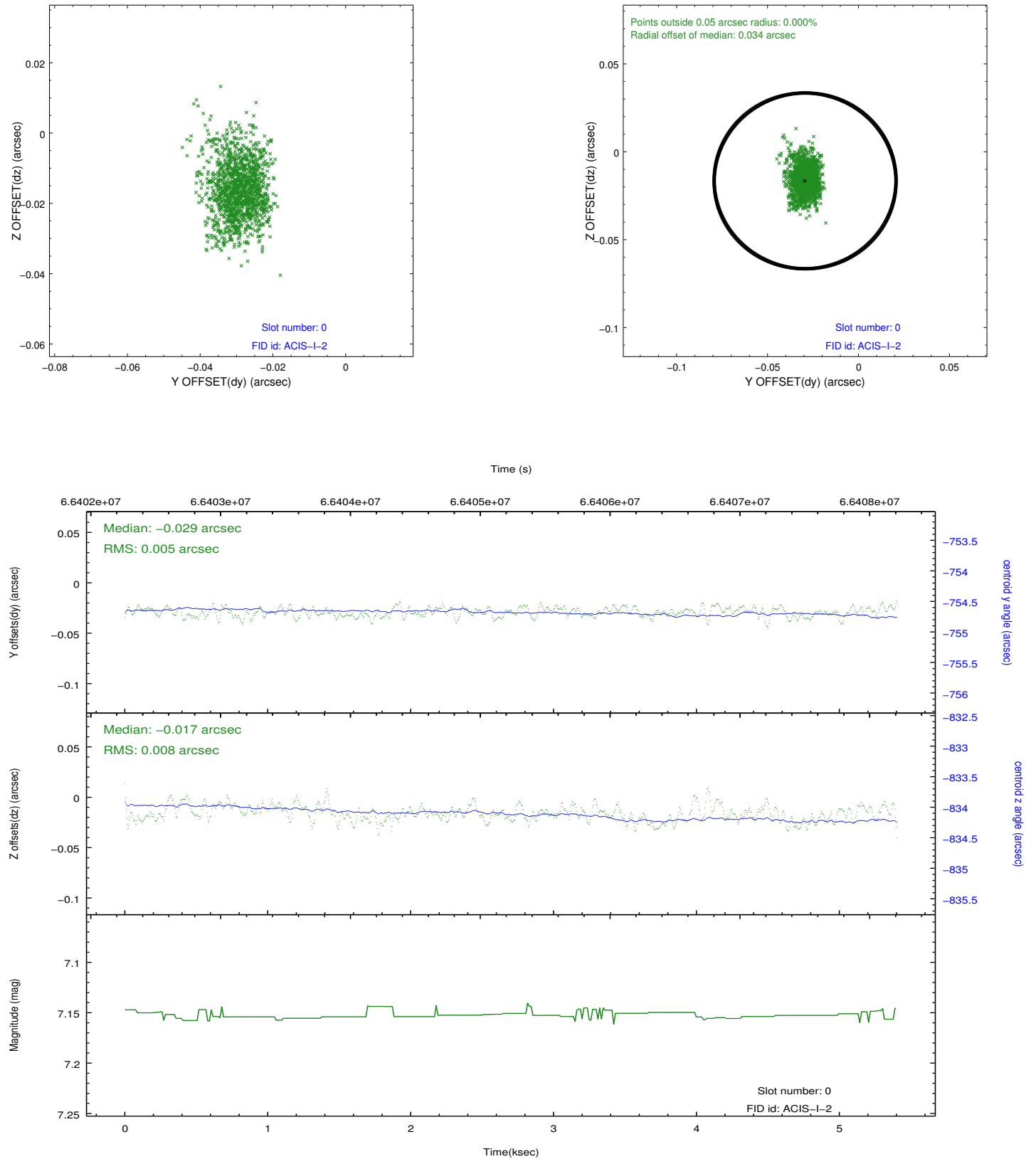


2.4.5 Slot 7

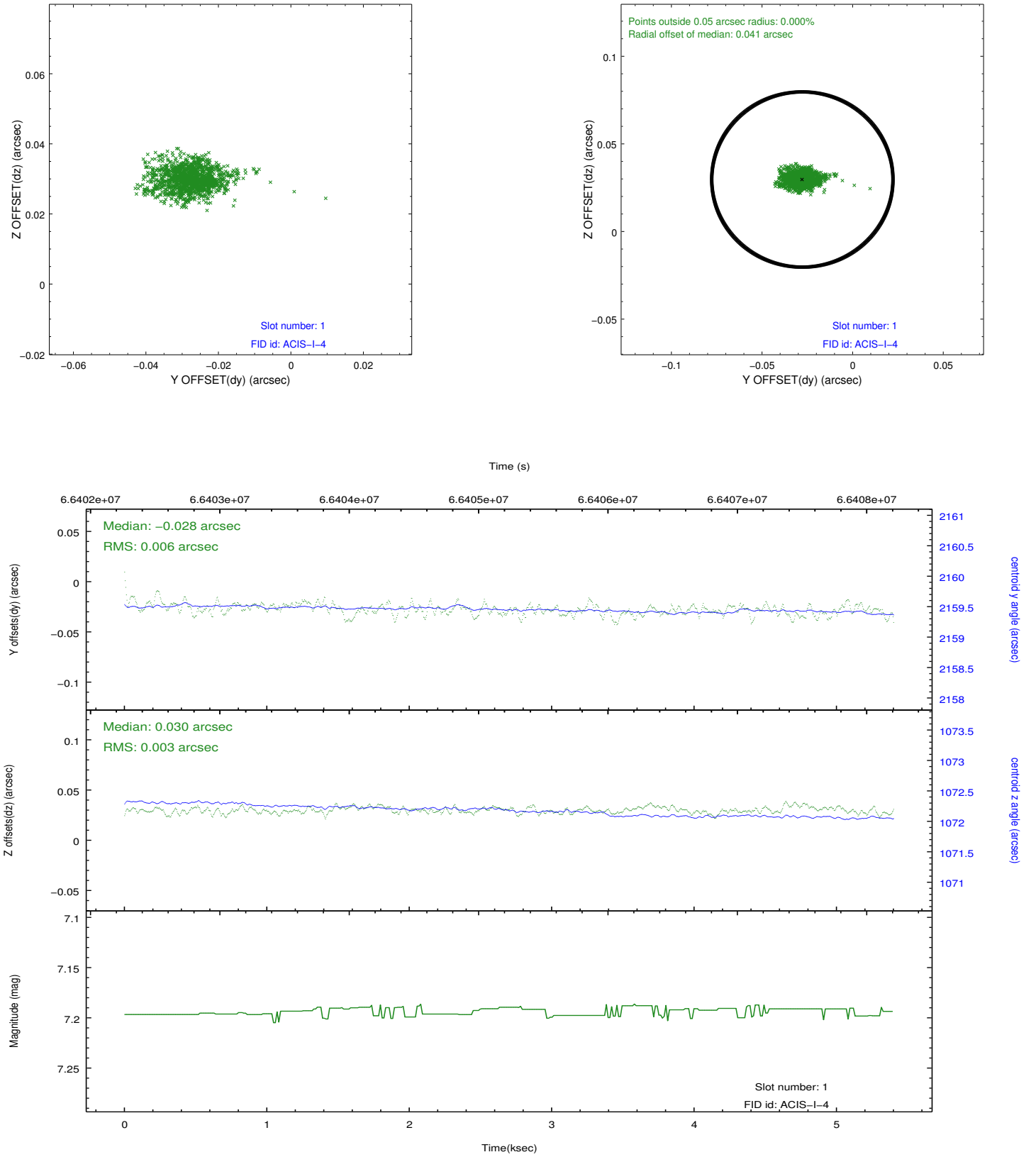


2.5 FID Slots

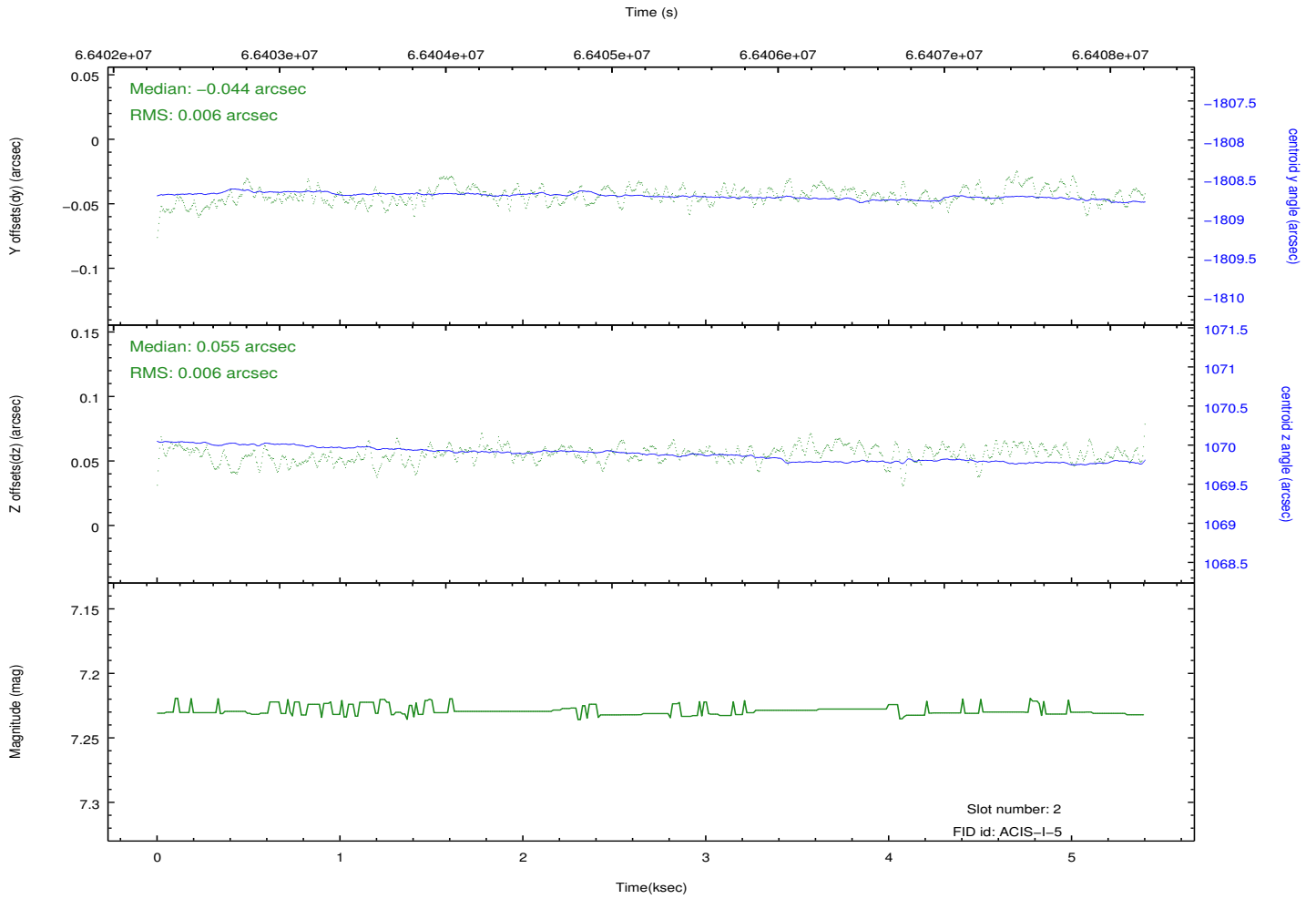
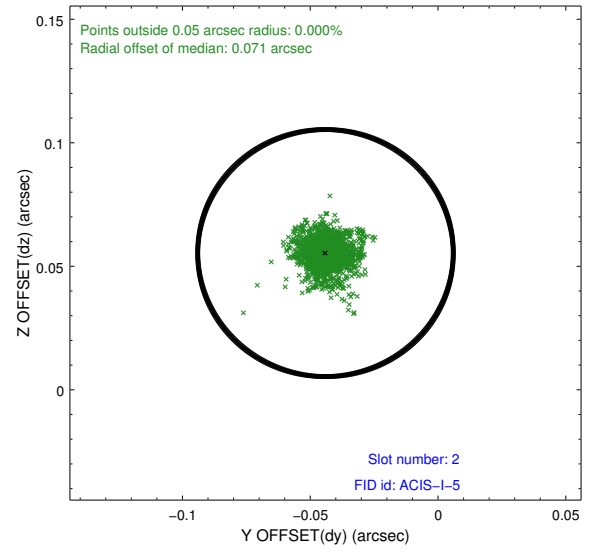
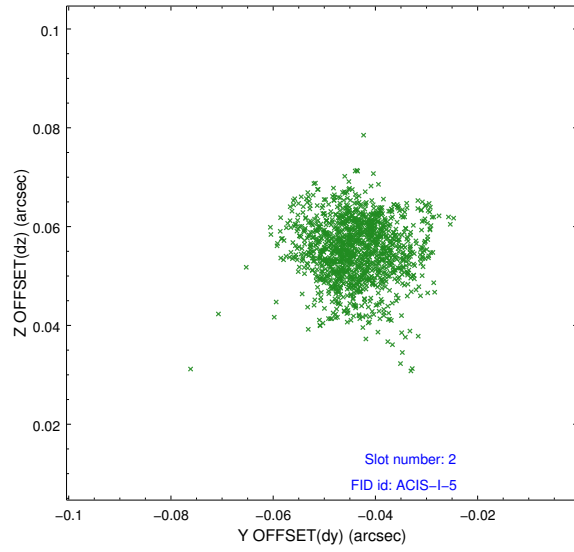
2.5.1 Slot 0



2.5.2 Slot 1



2.5.3 Slot 2



A Summary

A.1 Status

V&V Scientist	Jen Lauer
V&V Date (YYYY-MM-DD)	2012.08.23
V&V Edition	1
V&V Disposition and Status	OK
V&V Charge Time	4.752

A.2 Comments