

V&V Reference Report

L2 ASCDS Version : 8.4.4

Observation 8204 - L2 Version 2
Chandra X-Ray Center

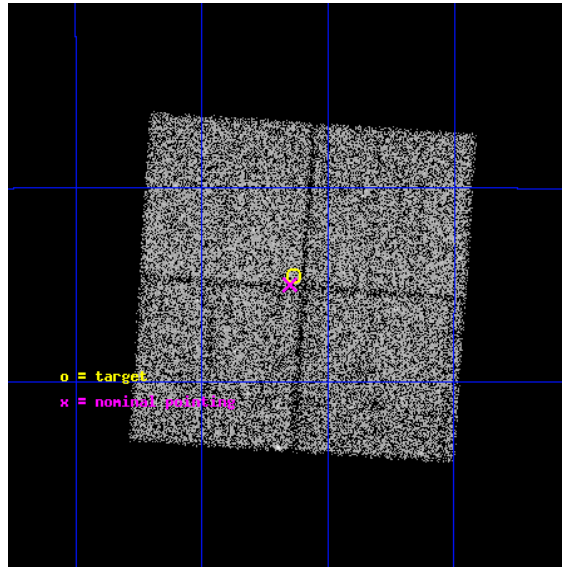
L2 Processing Date : Apr 29 2012

Contents

1	Front	2
2	OBI	3
2.1	OBI	3
2.1.1	Images	3
2.1.2	Bias	3
2.1.3	Parameters	4
2.1.4	Events	4
2.2	Compared Parameters	5
2.3	Aspect	6
2.4	Star Slots	9
2.4.1	Slot 3	9
2.4.2	Slot 4	10
2.4.3	Slot 5	11
2.4.4	Slot 6	12
2.4.5	Slot 7	13
2.5	FID Slots	14
2.5.1	Slot 0	14
2.5.2	Slot 1	15
2.5.3	Slot 2	16
A	Summary	17
A.1	Status	17
A.2	Comments	17

1 Front

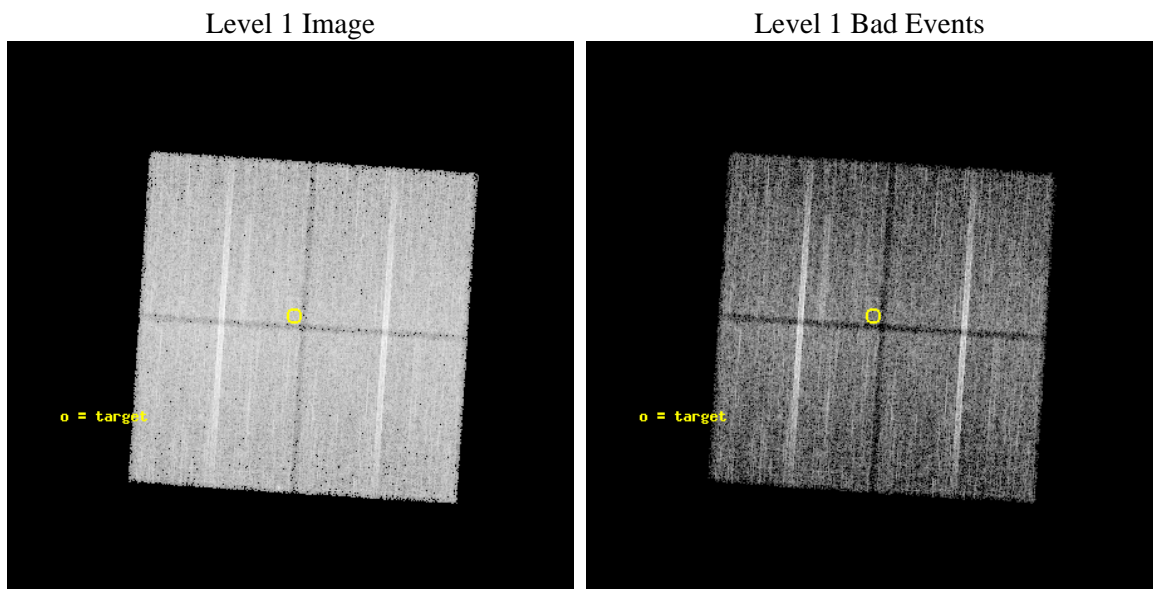
seq_num	600640	Sequence number
obs_id	8204	Observation id
title	Galactic Bulge Latitude Survey-2	Proposal title
observer	Professor Johnathan Grindlay	Principal investigator
object	GBW24	Source name
dtcycle	0	
cycle	P	events from which exps? Prim/Second/Both
ra_targ	265.409583	Observer's specified target RA [deg]
dec_targ	-28.409139	Observer's specified target Dec [deg]
ra_nom	265.41288758911	Nominal RA [deg]
dec_nom	-28.416667200755	Nominal Dec [deg]
roll_nom	273.81026322257	Nominal Roll [deg]
revision	2	Processing version of data
ontime	15050.418135166	Sum of GTIs [s]
livetime	14853.773342274	Livetime [s]
ontime0	15053.559115589	Sum of GTIs [s]
ontime1	15056.7001158	Sum of GTIs [s]
ontime2	15053.55914551	Sum of GTIs [s]
ontime3	15050.418135166	Sum of GTIs [s]
l2events	69724	Number of level 2 events



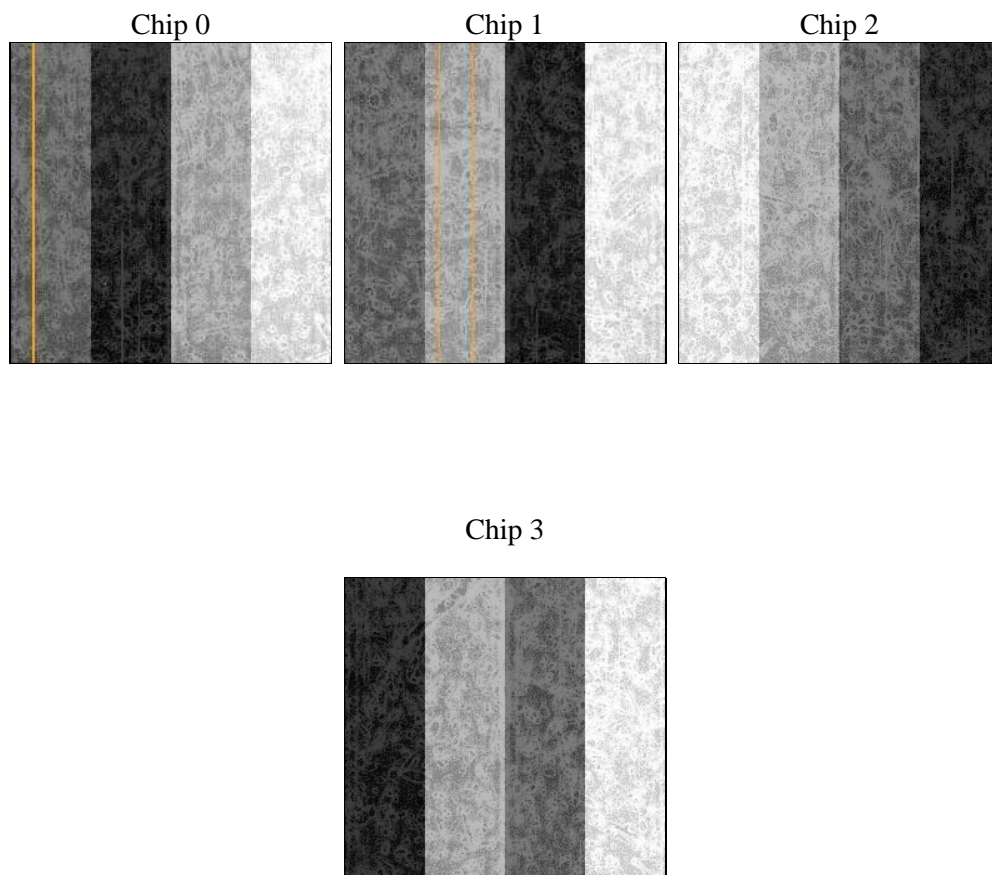
2 OBI

2.1 OBI

2.1.1 Images



2.1.2 Bias



2.1.3 Parameters

obi_num	0	Obi number	sched_exp_time	15000.000000	[s] Scheduled observation exposure time
ascdsver	8.4.4	Processing system revision	ontime	15050.418135166	Sum of GTIs [s]
caldsver	4.4.9	 	ontime0	15053.559115589	Sum of GTIs [s]
date	2012-04-29T02:15:46	Date and time of file creation	ontime1	15056.7001158	Sum of GTIs [s]
revision	2	Processing version of data	ontime2	15053.55914551	Sum of GTIs [s]
			ontime3	15050.418135166	Sum of GTIs [s]
			l1events	553661	Number of level 1 events

2.1.4 Events

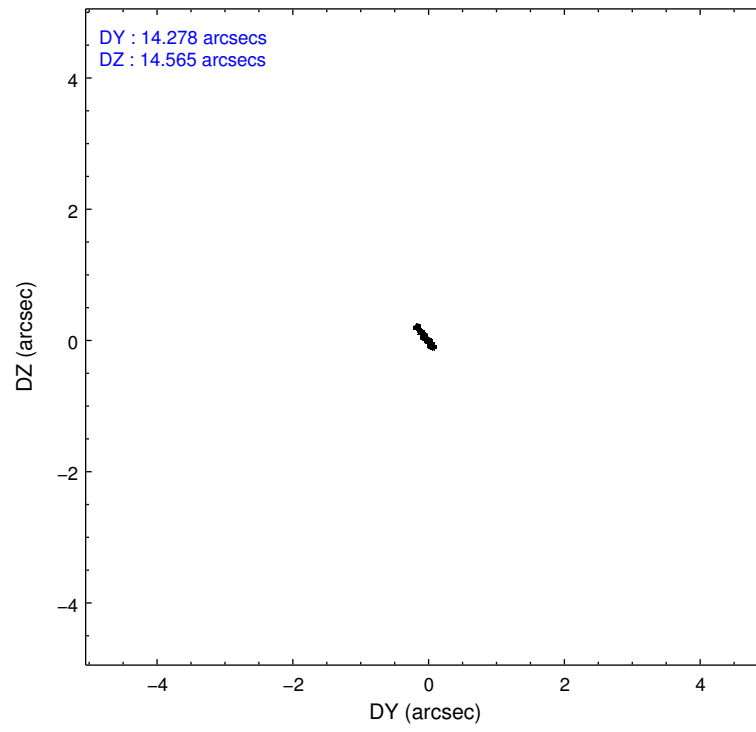
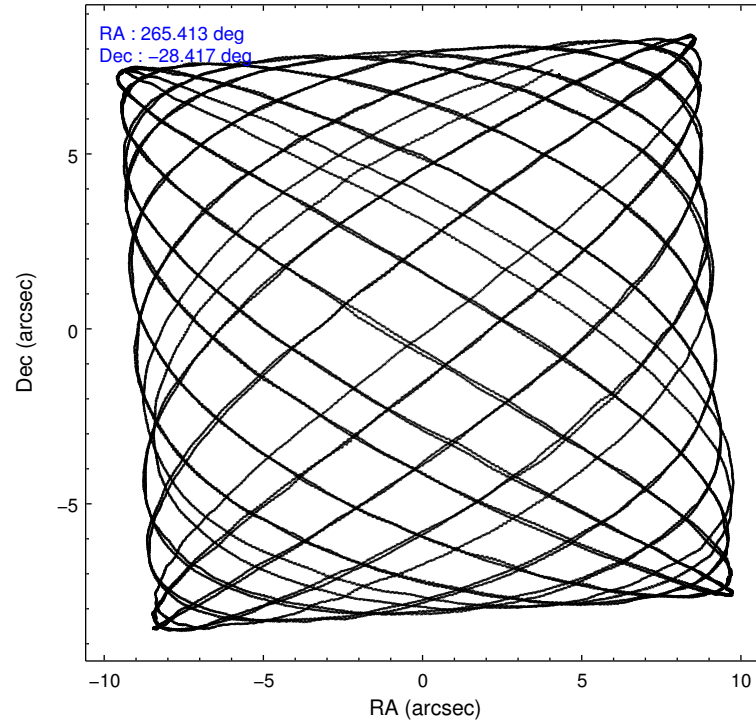
	ccd 0	ccd 1	ccd 2	ccd 3
level 1 events	132097	134013	145798	141753
rejected events	112373	113083	125825	121891
rejected %	85%	84%	86%	85%

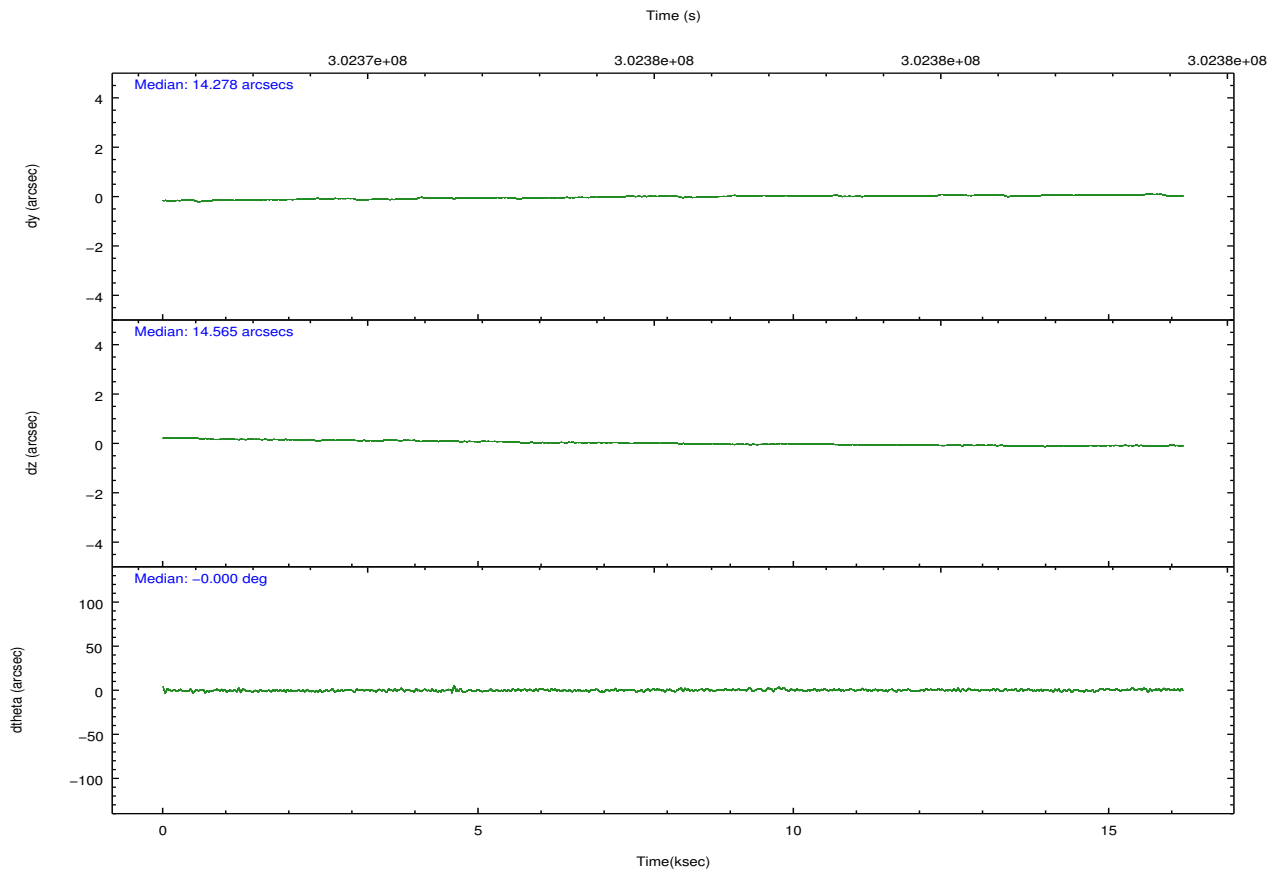
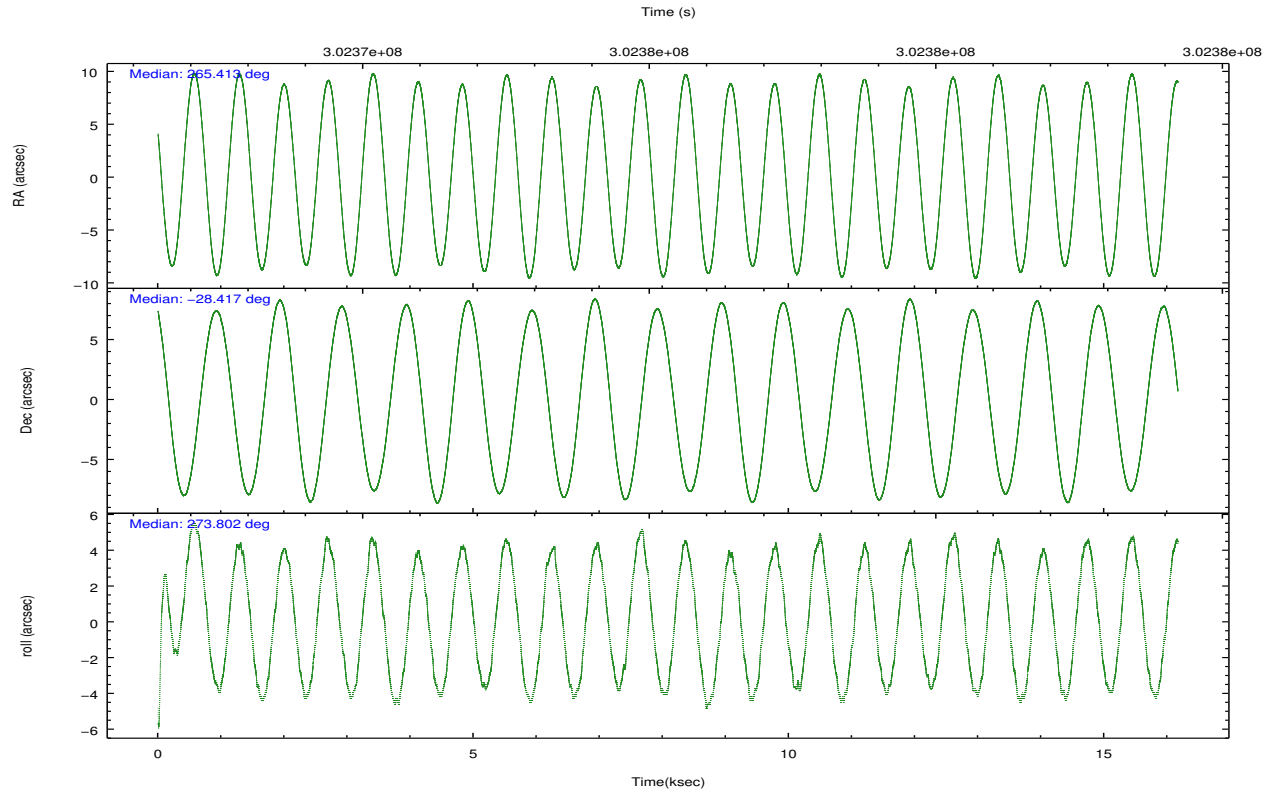
	ccd 0	ccd 1	ccd 2	ccd 3
grade 0 events	9025	9070	9827	9619
	6%	6%	6%	6%
grade 1 events	77	91	136	112
	0%	0%	0%	0%
grade 2 events	4103	4375	3906	3643
	3%	3%	2%	2%
grade 3 events	1841	1818	1724	1785
	1%	1%	1%	1%
grade 4 events	1652	1876	1708	1769
	1%	1%	1%	1%
grade 5 events	5794	6244	5491	6748
	4%	4%	3%	4%
grade 6 events	3112	3798	2811	3048
	2%	2%	1%	2%
grade 7 events	106493	106741	120195	115029
	80%	79%	82%	81%

2.2 Compared Parameters

Parameter	Planned	Actual	Parameter	Planned	Actual
Instrument	ACIS	ACIS	Obspar format version number	7	7
Detector	ACIS-0123	ACIS-0123	Obspar file type	PREDICTED	ACTUAL
Grating	NONE	NONE	Obspar update status	NONE	UPDATED
Data mode	VFAINT	VFAINT	Number of optional ACIS chips dropped	0	0
Observation mode	POINTING	POINTING	On-chip summing requested	N	N
[deg] Pointing RA	265.395397	265.4128875891067	Subarray requested	NONE	NONE
[deg] Pointing Dec	-28.393897	-28.41666720075457	Alternating exposures requested	N	N
[deg] Pointing Roll	273.593254	273.8102632225712	[s] Primary exposure time	0.000000	3.1
[mm] SIM focus pos	-0.782348	-0.7809083437167272			
[mm] SIM defocus	0	0.001439871863259334			
[mm] SIM translation stage pos	-233.592463	-233.5874344608287			
[mm] SIM translation stage offset	0	-0.005018542100998502			
[s] Observation start time (MET)	302368410.184000	302367047.58072			
Observation start date	2007-08-01T15:12:25	2007-08-01T14:50:47			
[s] Observation end time (MET)	302383410.184000	302383544.44402			
Observation end date	2007-08-01T19:22:25	2007-08-01T19:25:44			
Read mode	TIMED	TIMED			

2.3 Aspect



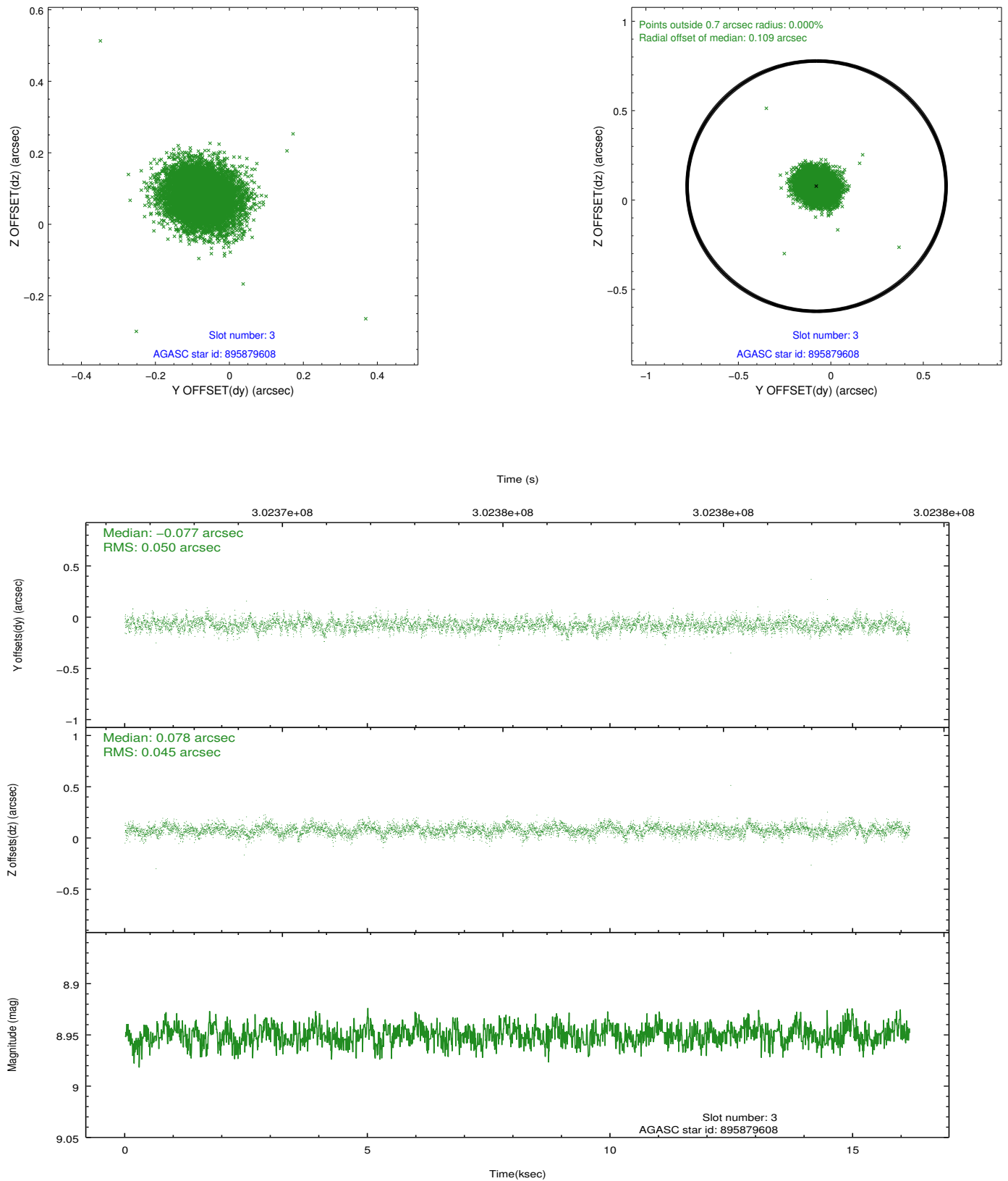


Slot Statistics

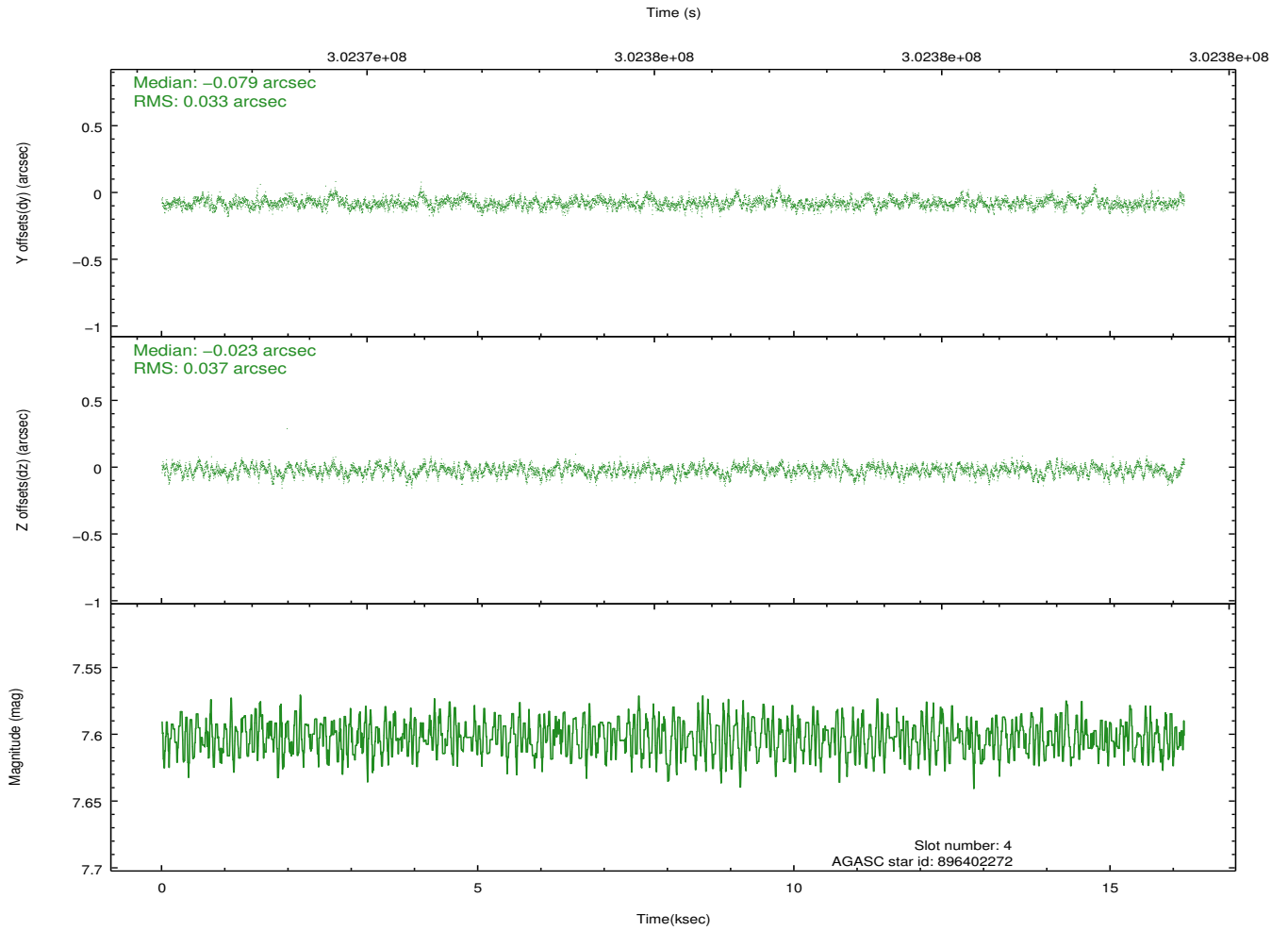
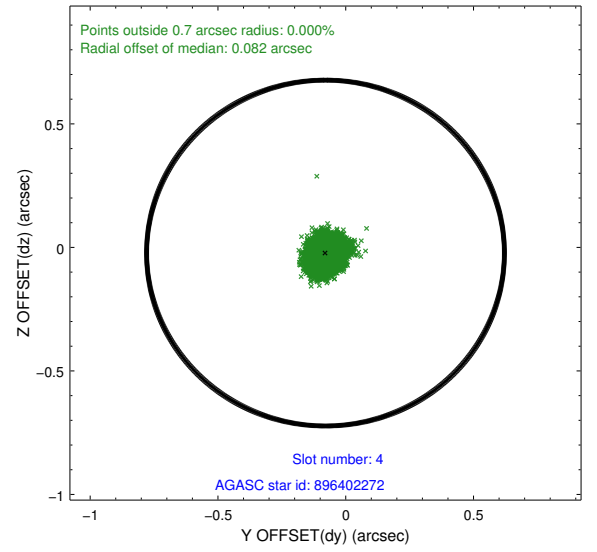
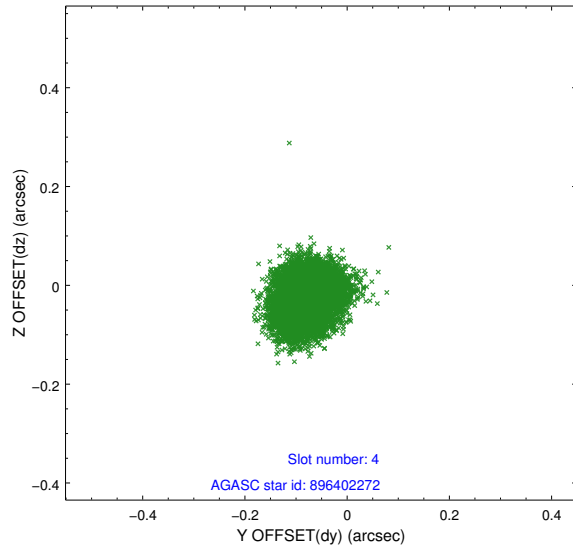
slot	status	id	mag	n_pts	med_dy	med_dz	dr1	dr2	ra	dec	mean_y	mean_z
0	FID	ACIS-I-1	7.23	3944	-0.034	0.060	0.010	0.017	0.000000	0.000000	925.17	-838.13
1	FID	ACIS-I-2	7.14	3943	-0.164	-0.083	0.007	0.011	0.000000	0.000000	-768.90	-844.81
2	FID	ACIS-I-4	7.14	3943	0.099	0.089	0.007	0.012	0.000000	0.000000	2145.12	1061.53
3	GUIDE	895879608	8.95	7879	-0.077	0.078	0.071	0.116	265.708239	-27.843915	-1912.25	1117.98
4	GUIDE	896402272	7.60	7888	-0.079	-0.023	0.053	0.085	265.637294	-28.313189	-241.24	783.63
5	GUIDE	896402656	8.84	7878	0.011	0.129	0.069	0.109	265.739192	-28.230753	-516.10	1125.41
6	GUIDE	896402976	7.52	7889	0.158	-0.034	0.059	0.092	265.099474	-28.923203	1845.07	-1049.54
7	GUIDE	896405616	7.84	7885	-0.016	-0.148	0.064	0.102	264.752771	-28.412560	-53.65	-2035.95

2.4 Star Slots

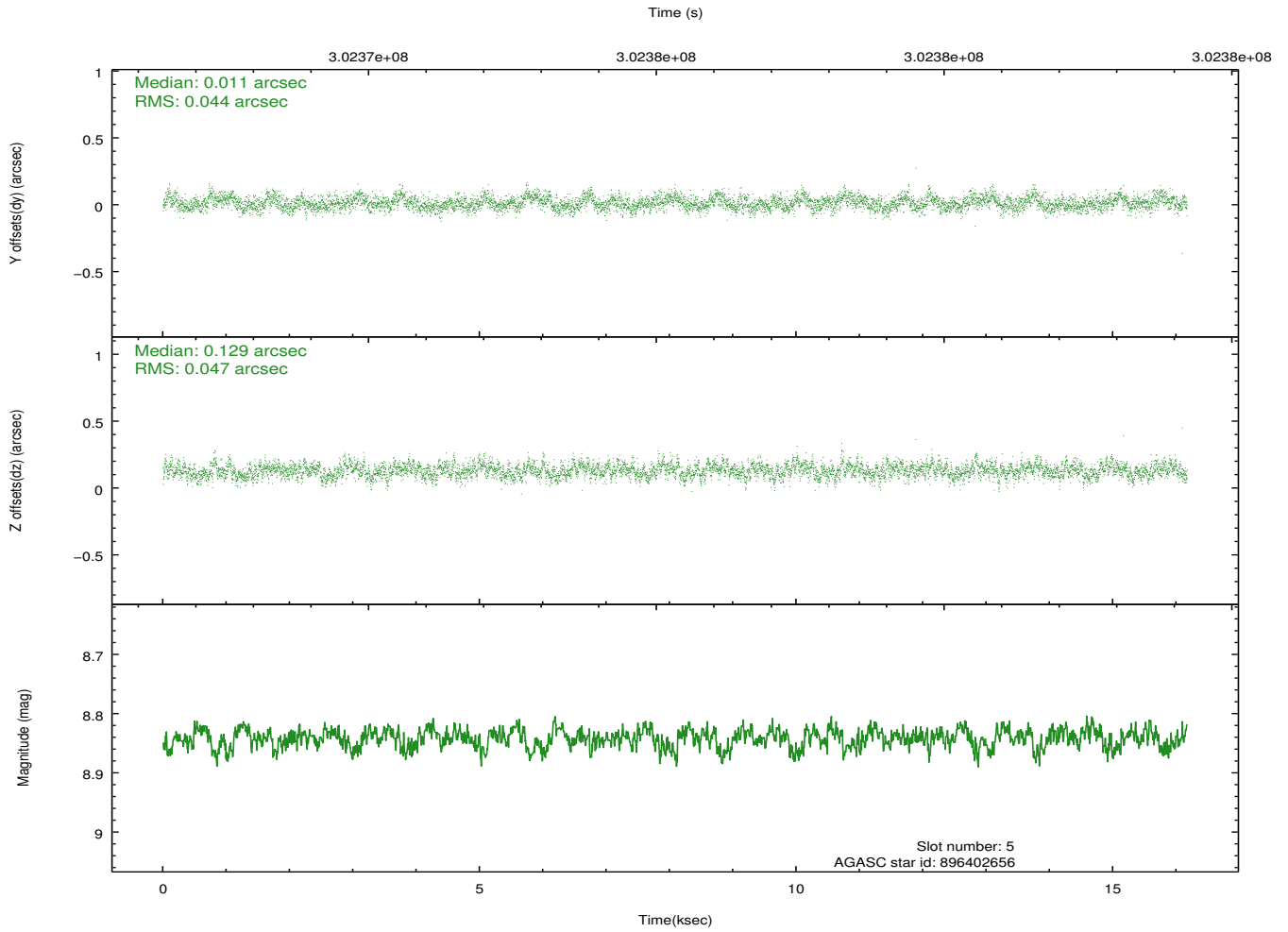
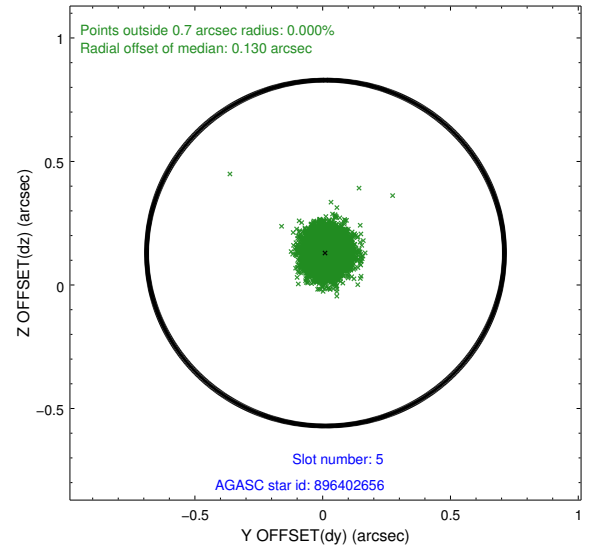
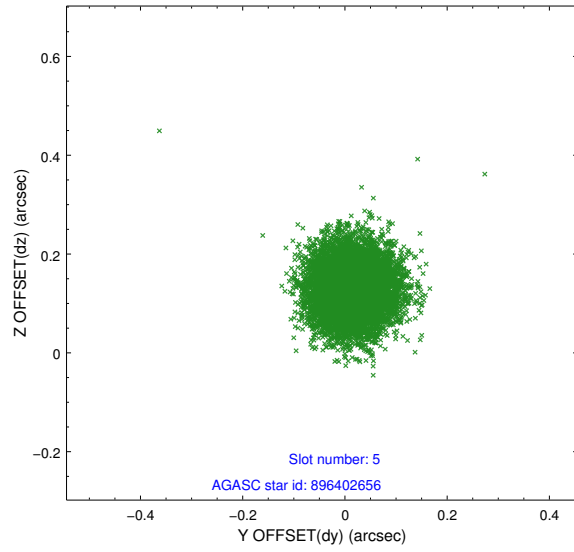
2.4.1 Slot 3



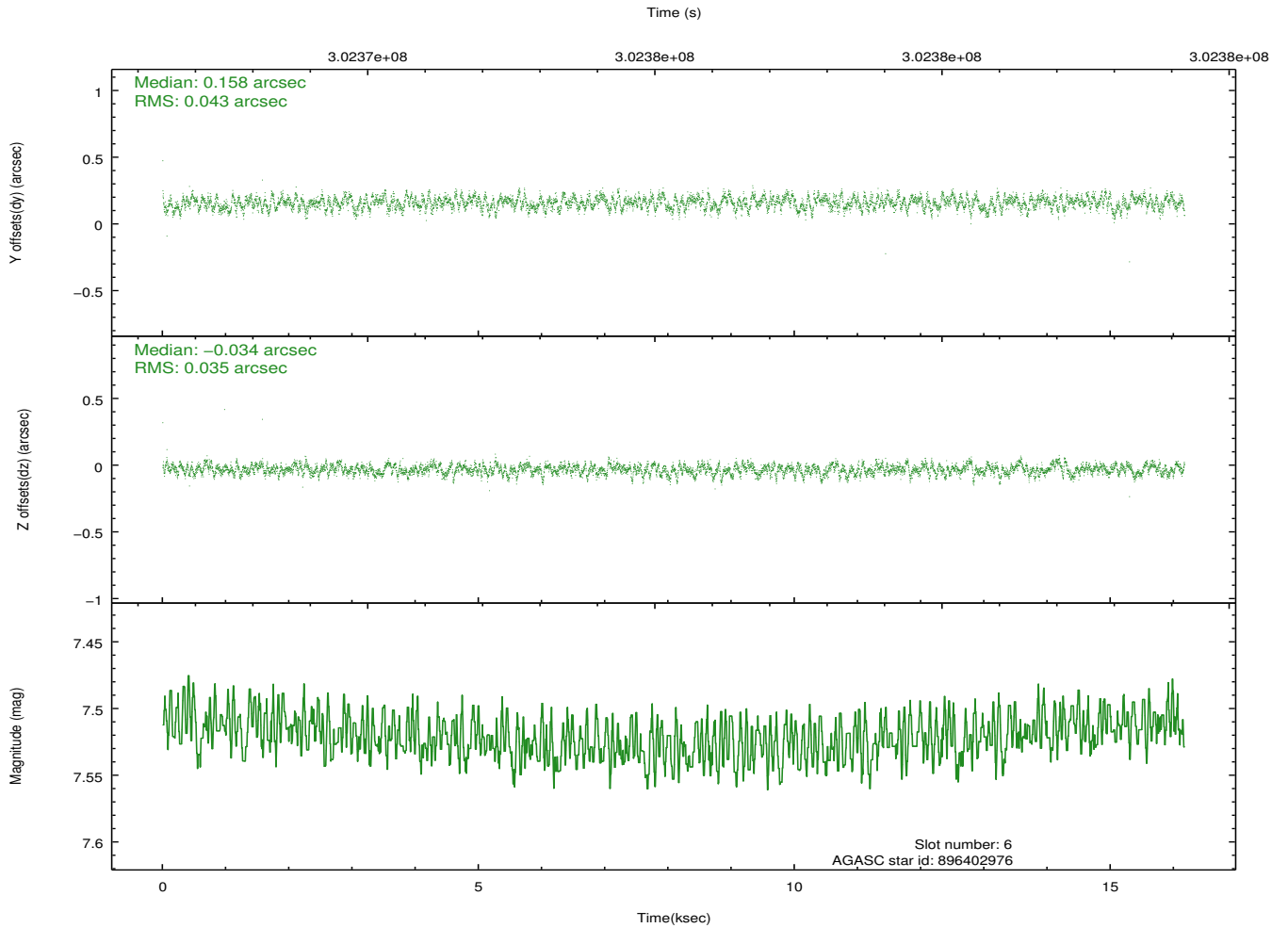
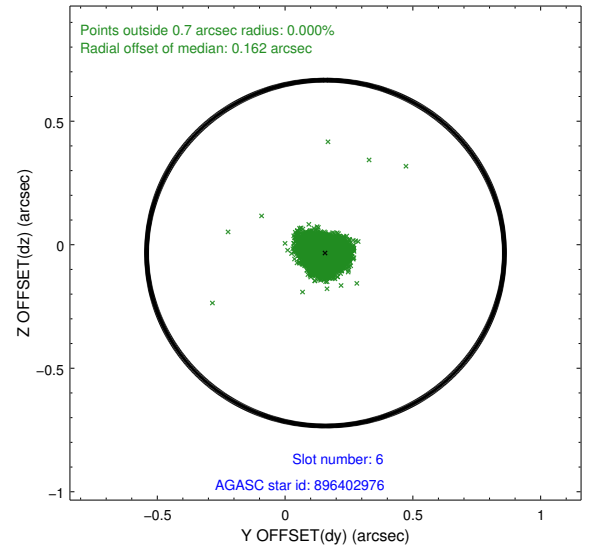
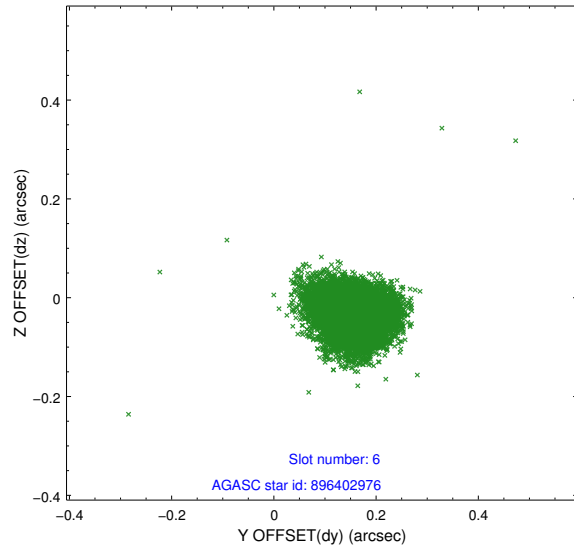
2.4.2 Slot 4



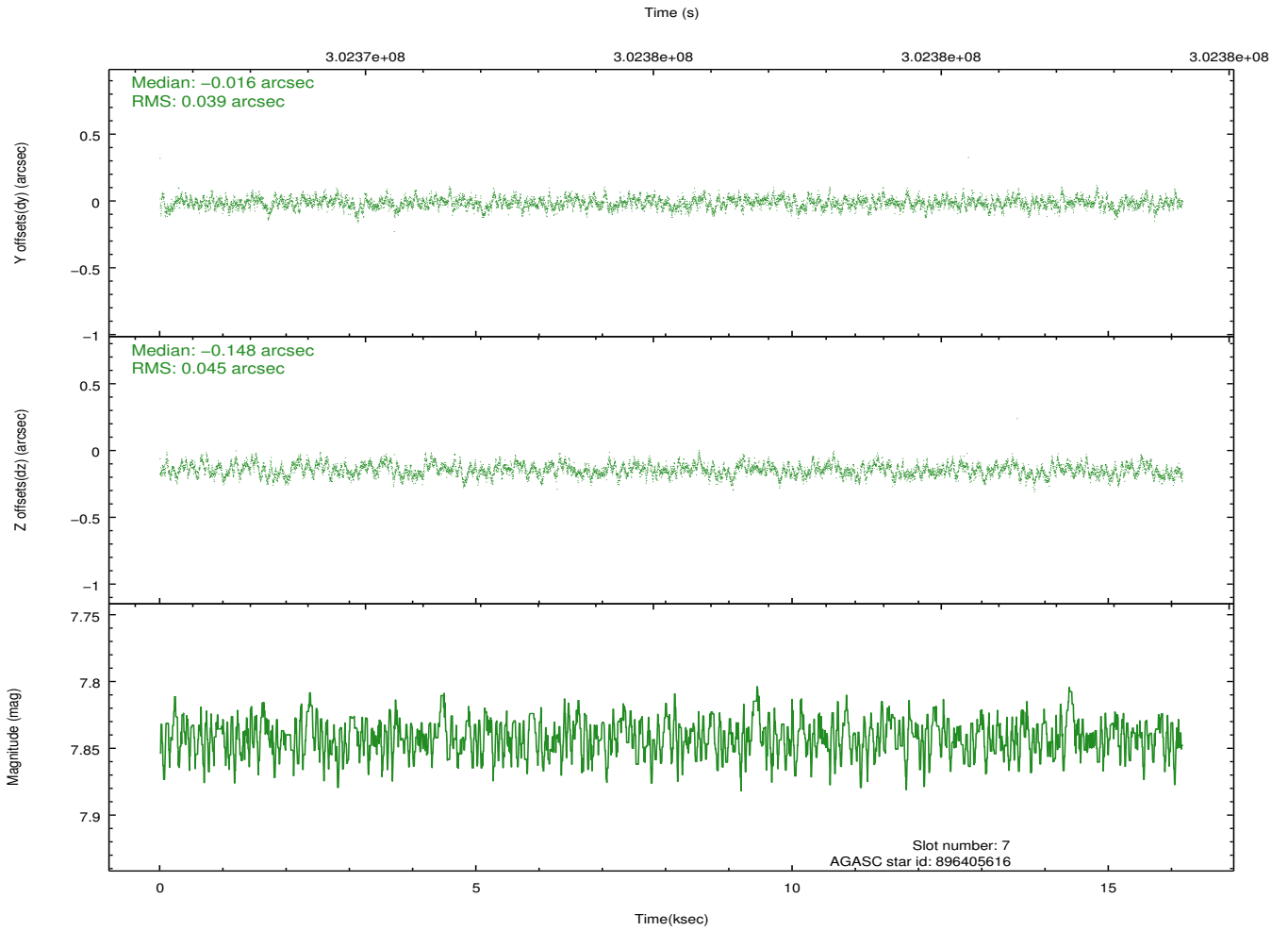
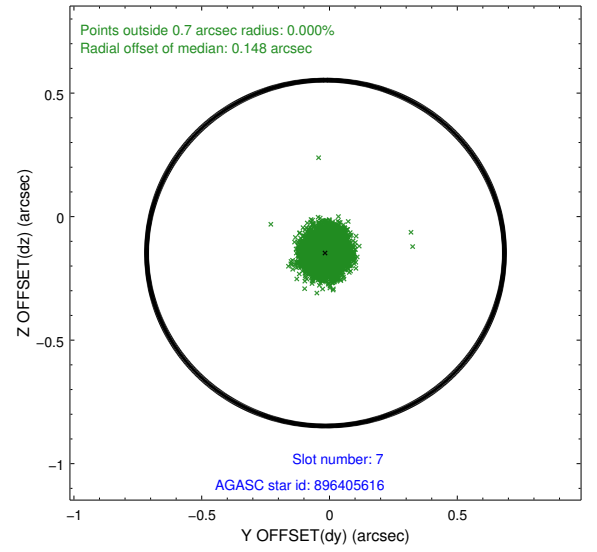
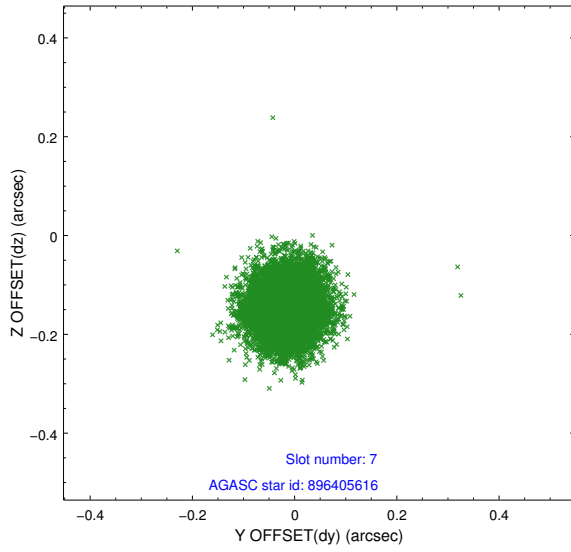
2.4.3 Slot 5



2.4.4 Slot 6

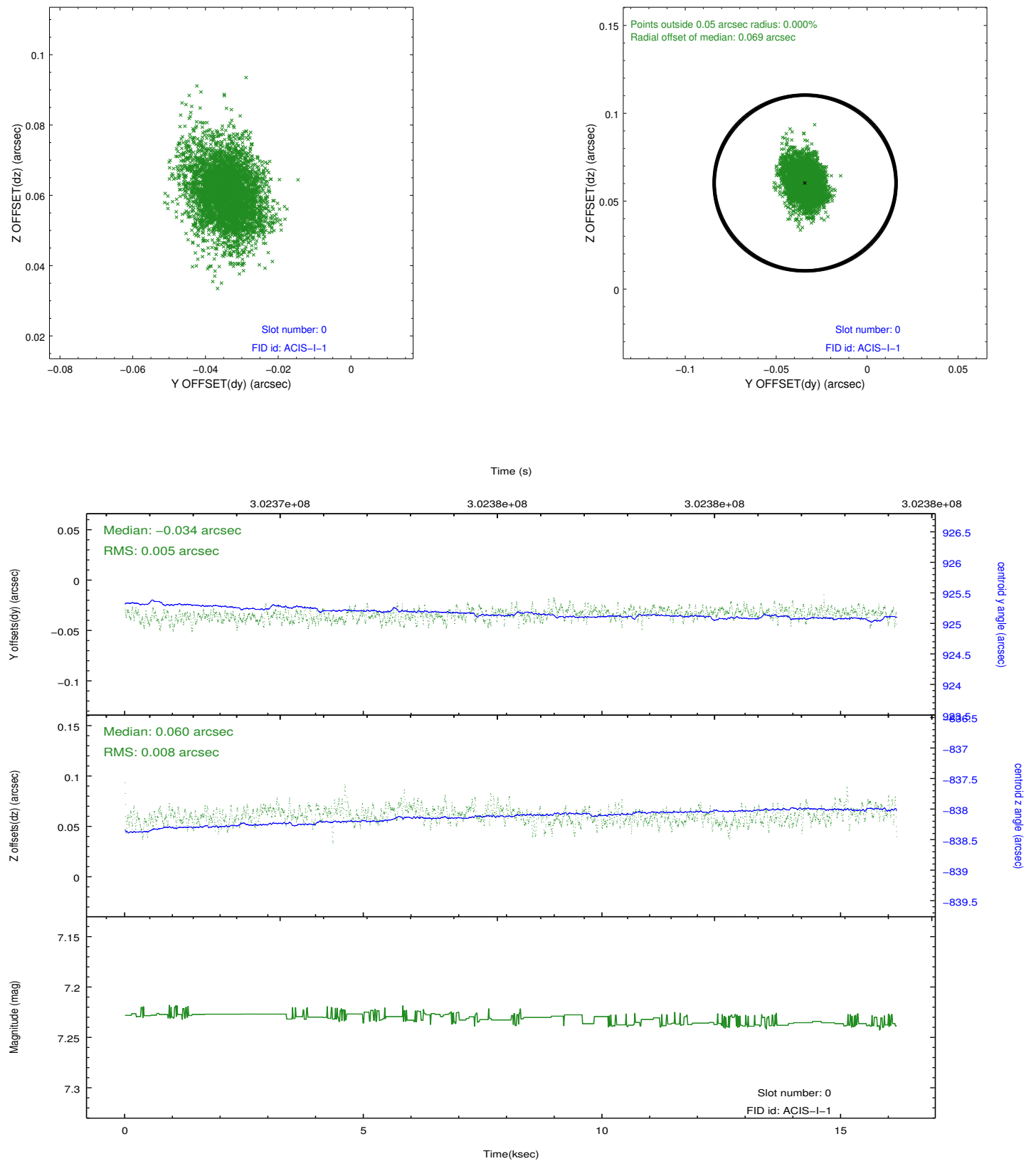


2.4.5 Slot 7

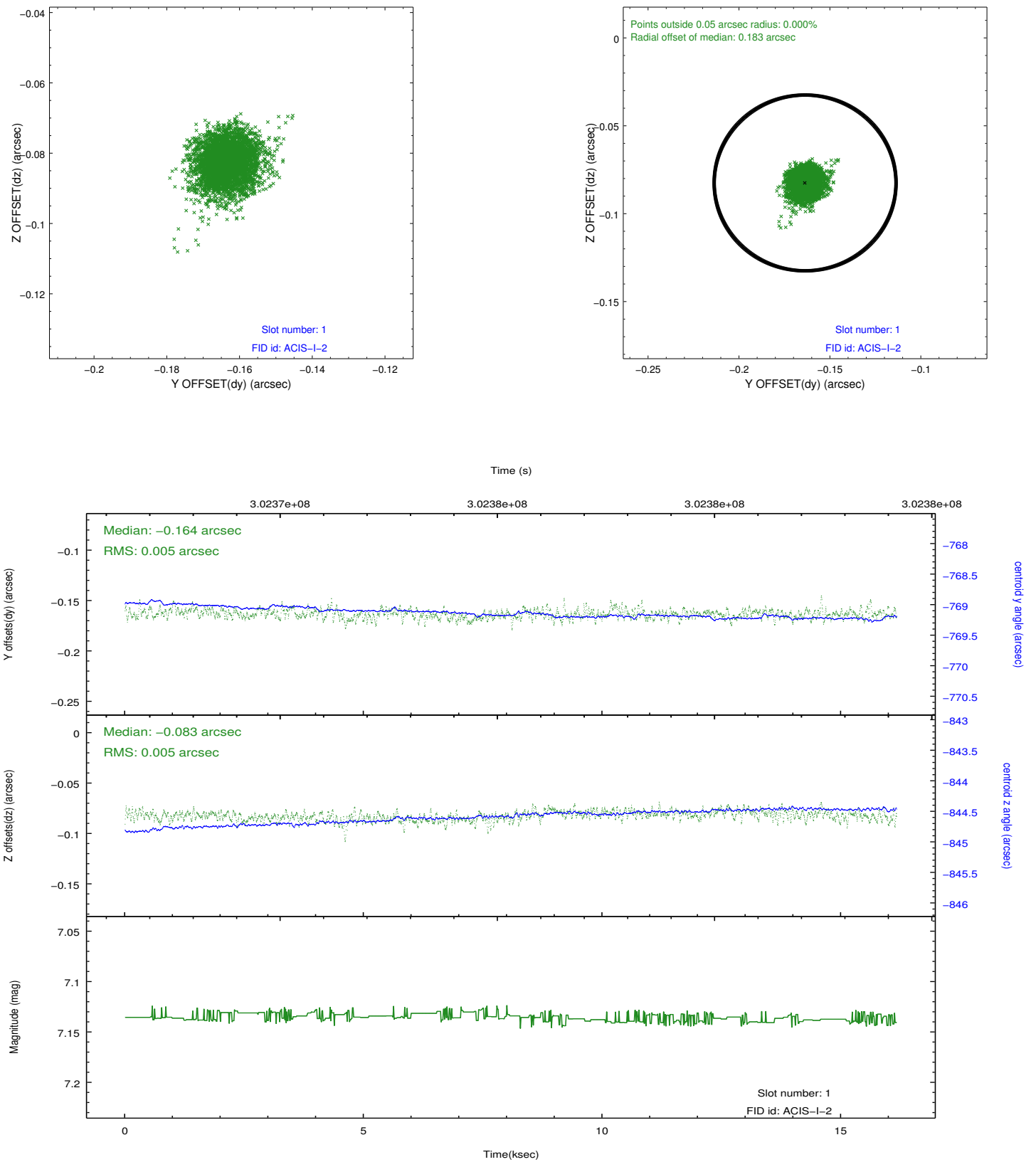


2.5 FID Slots

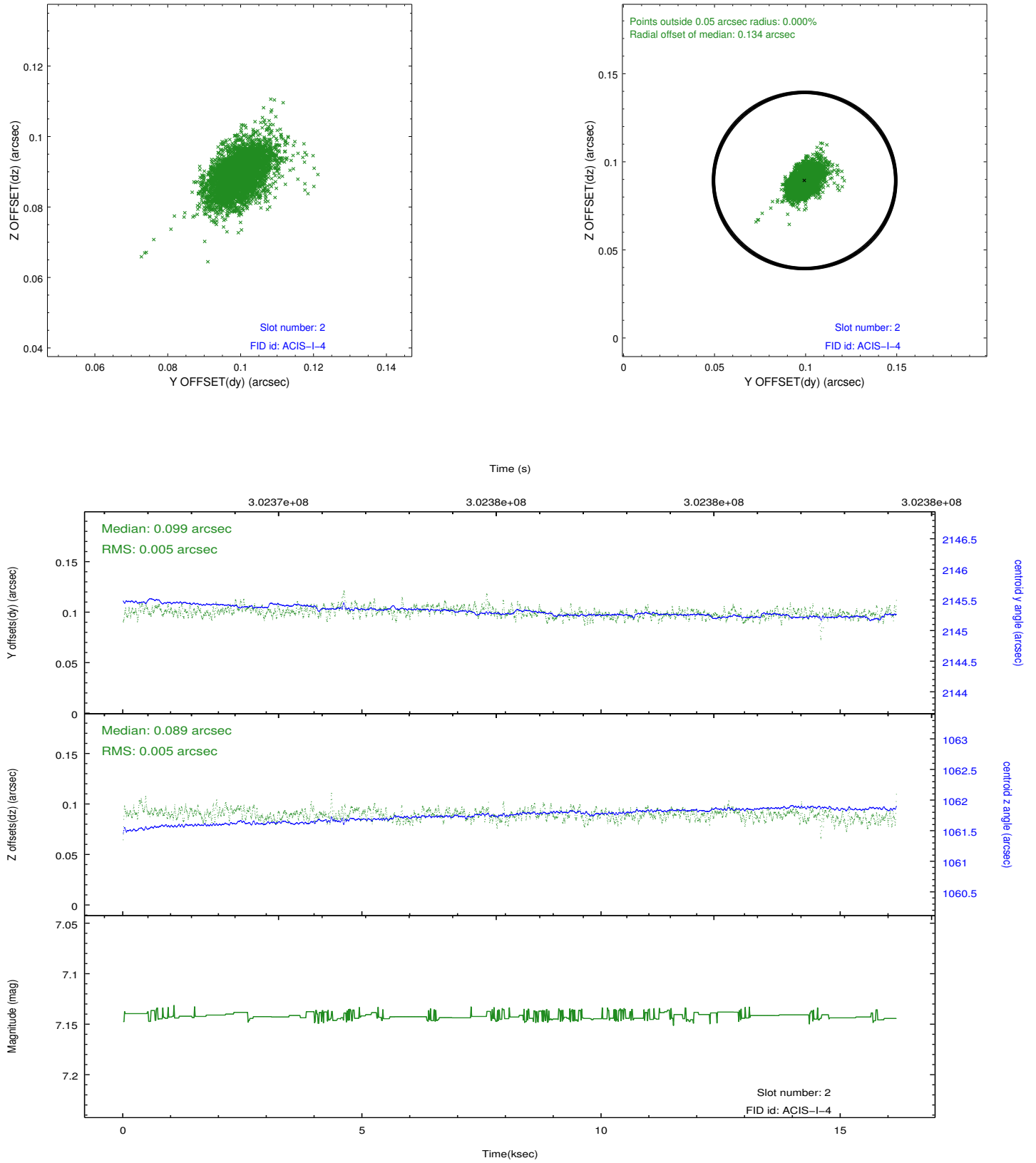
2.5.1 Slot 0



2.5.2 Slot 1



2.5.3 Slot 2



A Summary

A.1 Status

V&V Scientist	Jen Lauer
V&V Date (YYYY-MM-DD)	2012.05.01
V&V Edition	1
V&V Disposition and Status	OK
V&V Charge Time	15.0504181

A.2 Comments

Roll constraint of 95 +/- 10 degrees met.