

V&V Reference Report

L2 ASCDS Version : 8.4.4

Observation 8084 - L2 Version 3
Chandra X-Ray Center

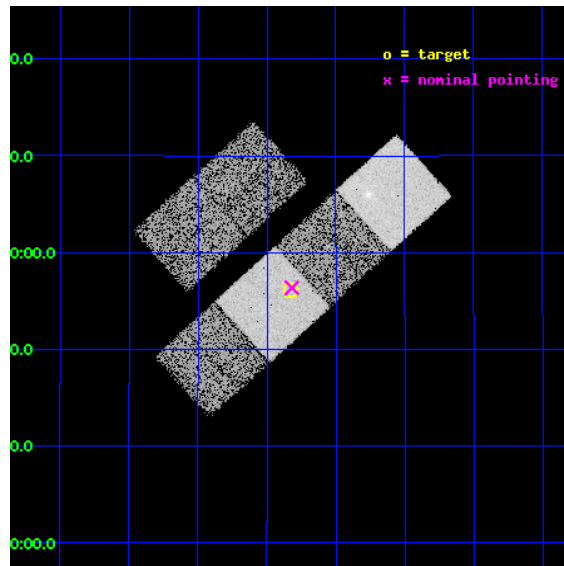
L2 Processing Date : Apr 21 2012

Contents

1	Front	2
2	OBI	3
2.1	OBI	3
2.1.1	Images	3
2.1.2	Bias	3
2.1.3	Parameters	4
2.1.4	Events	4
2.2	Compared Parameters	5
2.3	Aspect	6
2.4	Star Slots	9
2.4.1	Slot 3	9
2.4.2	Slot 4	10
2.4.3	Slot 5	11
2.4.4	Slot 6	12
2.4.5	Slot 7	13
2.5	FID Slots	14
2.5.1	Slot 0	14
2.5.2	Slot 1	15
2.5.3	Slot 2	16
A	Summary	17
A.1	Status	17
A.2	Comments	17

1 Front

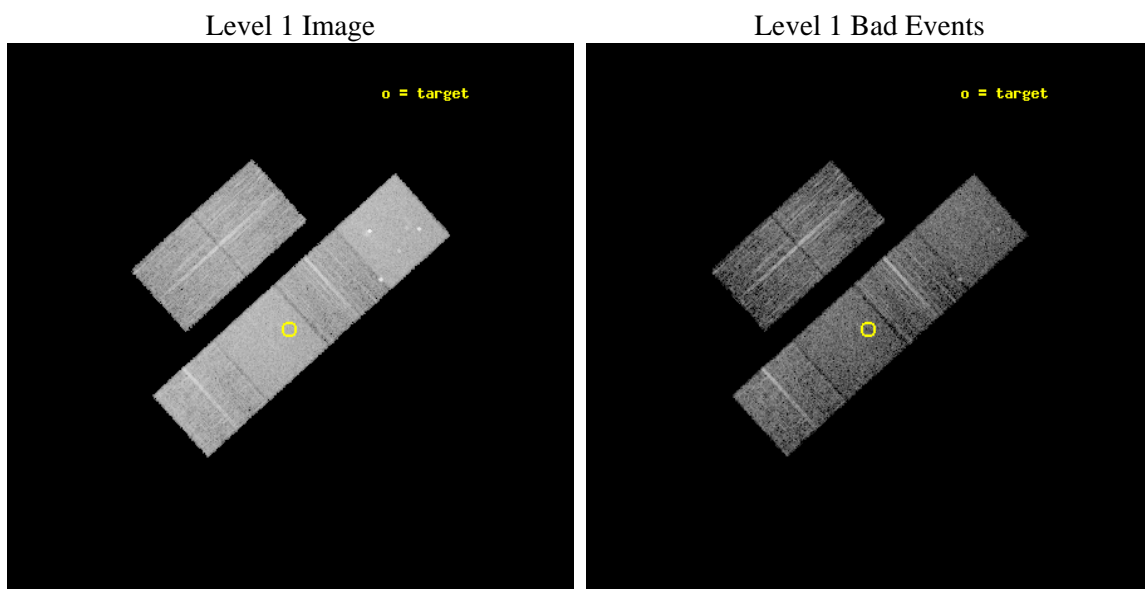
seq_num	900625	Sequence number
obs_id	8084	Observation id
title	The Duty Cycle of Supermassive Black Holes: X-raying Virgo	Proposa
observer	Prof Tommaso Treu	Principal investigator
object	1833	Source name
dtcycle	0	
cycle	P	events from which exps? Prim/Second/Both
ra_targ	190.081667	Observer's specified target RA [deg]
dec_targ	15.935333	Observer's specified target Dec [deg]
ra_nom	190.07968798071	Nominal RA [deg]
dec_nom	15.939309429376	Nominal Dec [deg]
roll_nom	137.81747759364	Nominal Roll [deg]
revision	3	Processing version of data
ontime	5315.1999802589	Sum of GTIs [s]
livetime	5247.8957176797	Livetime [s]
ontime2	5315.1999802589	Sum of GTIs [s]
ontime3	5315.1999802589	Sum of GTIs [s]
ontime5	5315.1999802589	Sum of GTIs [s]
ontime6	5315.1999802589	Sum of GTIs [s]
ontime7	5315.1999802589	Sum of GTIs [s]
ontime8	5315.1999802589	Sum of GTIs [s]
l2events	82018	Number of level 2 events



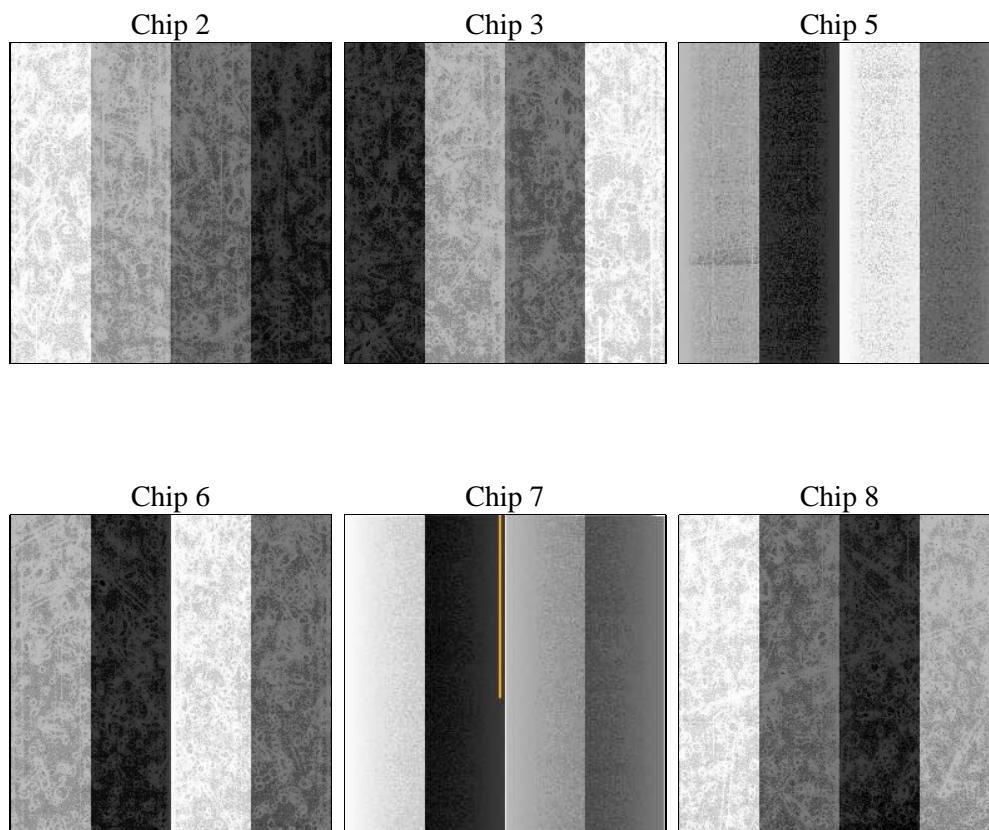
2 OBI

2.1 OBI

2.1.1 Images



2.1.2 Bias



2.1.3 Parameters

obi_num	0	Obi number	sched_exp_time	5200.000000	[s] Scheduled observation exposure time
ascdsver	8.4.4	Processing system revision	ontime	5315.1999802589	Sum of GTIs [s]
caldsver	4.4.9	 	ontime2	5315.1999802589	Sum of GTIs [s]
date	2012-04-21T14:05:50	Date and time of file creation	ontime3	5315.1999802589	Sum of GTIs [s]
revision	3	Processing version of data	ontime5	5315.1999802589	Sum of GTIs [s]
			ontime6	5315.1999802589	Sum of GTIs [s]
			ontime7	5315.1999802589	Sum of GTIs [s]
			ontime8	5315.1999802589	Sum of GTIs [s]
			l1events	381322	Number of level 1 events

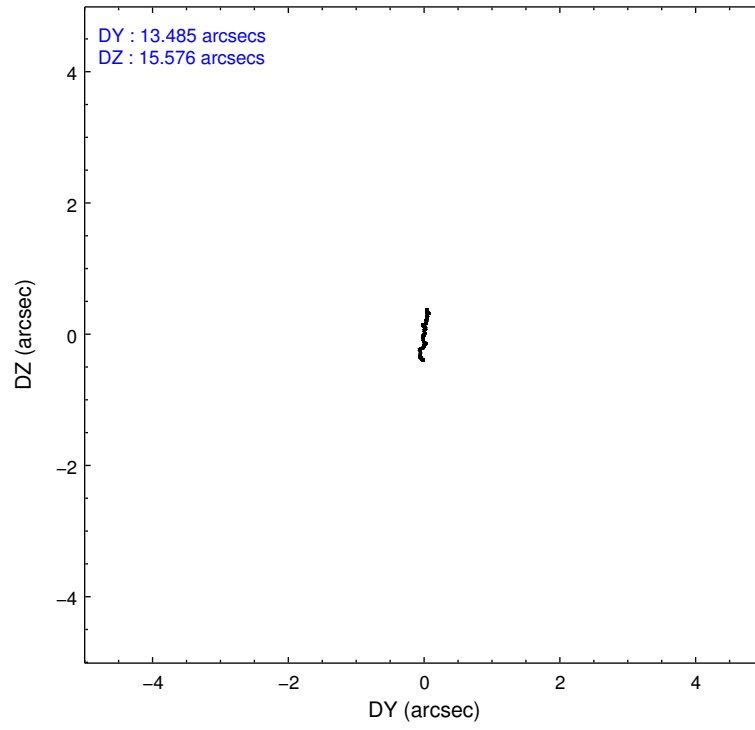
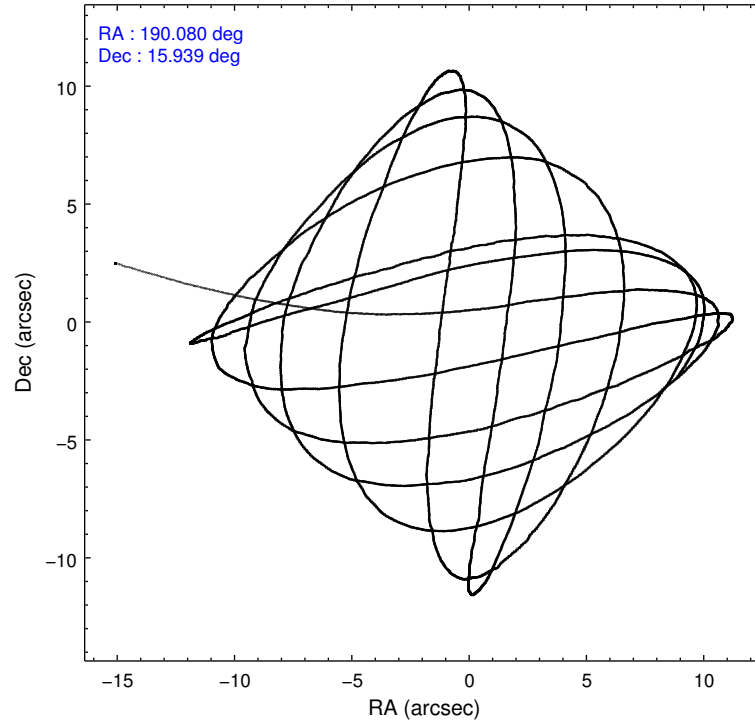
2.1.4 Events

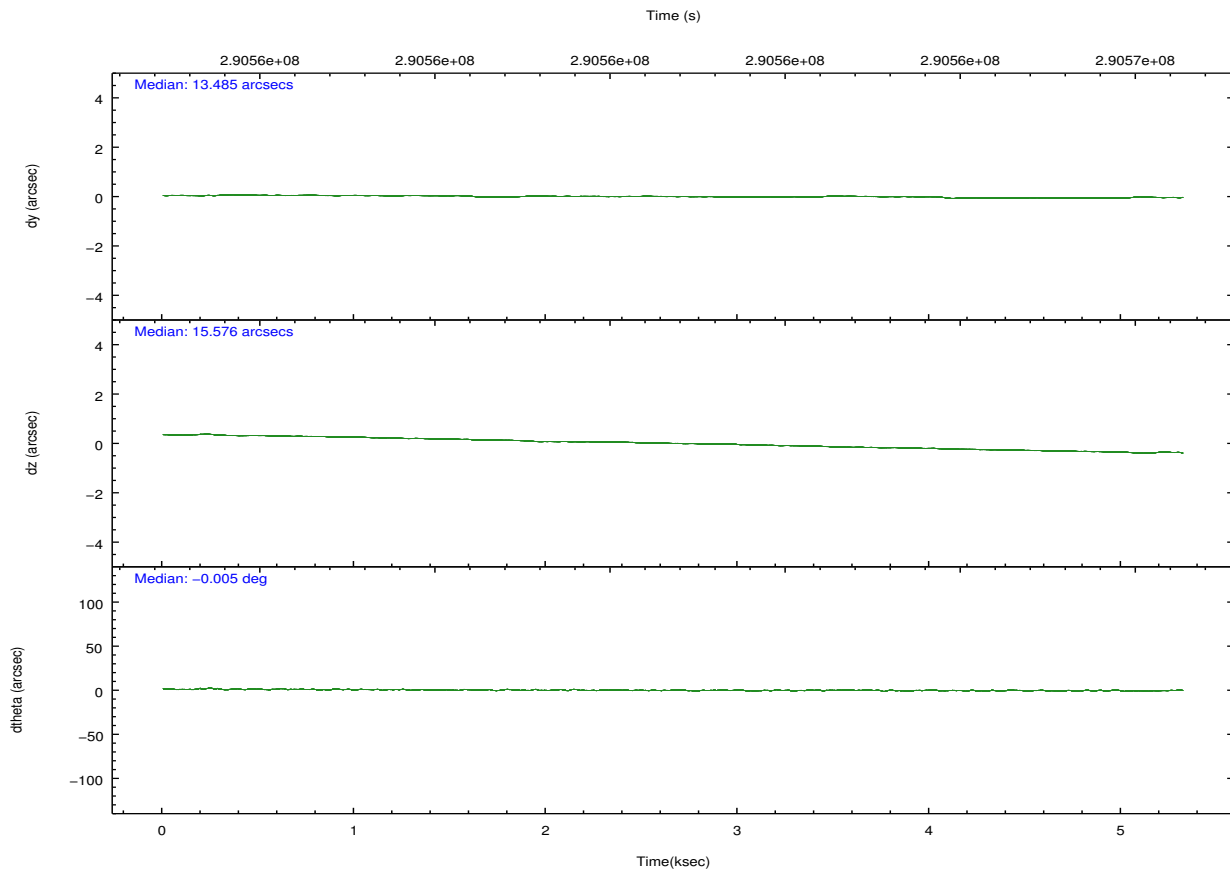
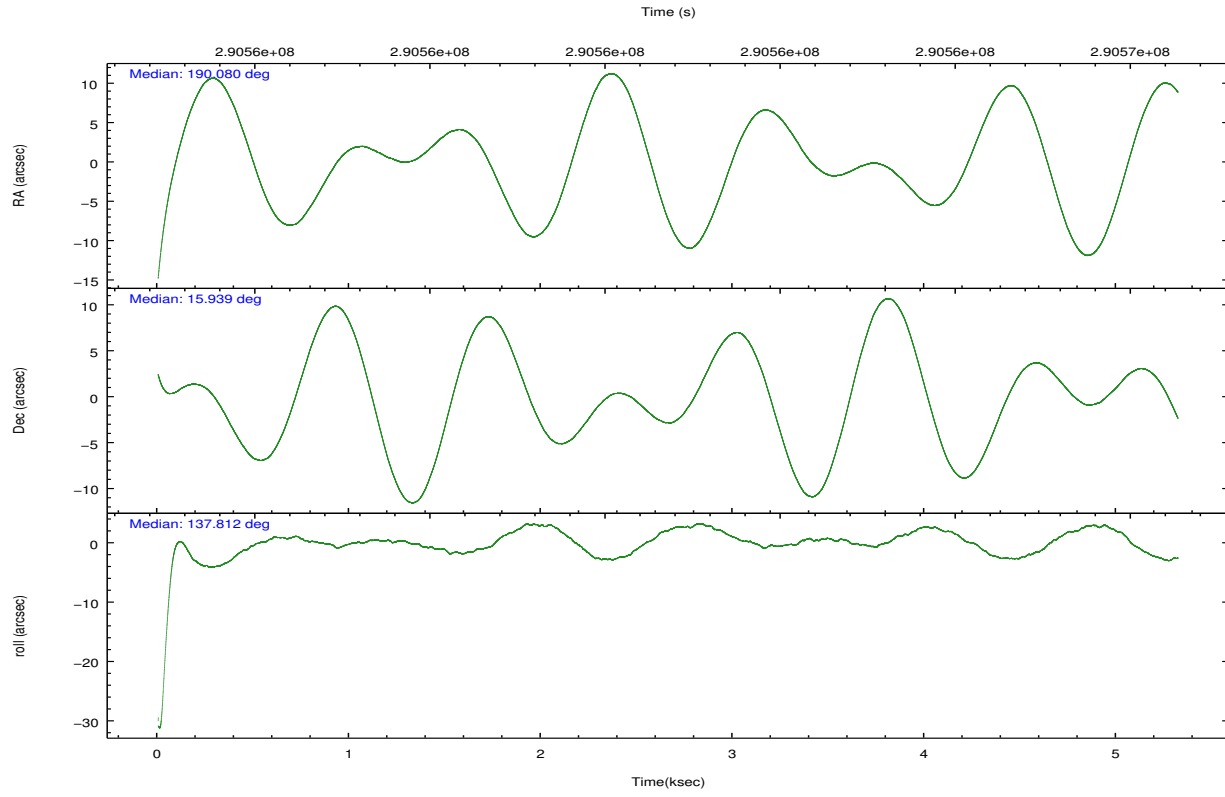
	ccd 2	ccd 3	ccd 5	ccd 6	ccd 7	ccd 8		ccd 2	ccd 3	ccd 5	ccd 6	ccd 7	ccd 8
level 1 events	56622	49425	83008	52208	73586	66473	grade 0 events	2682	2640	4378	2568	2538	4675
rejected events	50839	43794	46484	46180	45284	52687		4%	5%	5%	4%	3%	7%
rejected %	89%	88%	55%	88%	61%	79%	grade 1 events	46	43	218	26	73	52
								0%	0%	0%	0%	0%	0%
							grade 2 events	1335	1173	11970	1408	6277	3246
								2%	2%	14%	2%	8%	4%
							grade 3 events	568	576	1497	614	2641	1655
								1%	1%	1%	1%	3%	2%
							grade 4 events	560	576	1369	608	2599	1469
								0%	1%	1%	1%	3%	2%
							grade 5 events	2210	2379	5853	2493	7009	3168
								3%	4%	7%	4%	9%	4%
							grade 6 events	1099	1086	20230	1300	16383	3780
								1%	2%	24%	2%	22%	5%
							grade 7 events	48122	40952	37493	43191	36066	48428
								84%	82%	45%	82%	49%	72%

2.2 Compared Parameters

Parameter	Planned	Actual	Parameter	Planned	Actual
Instrument	ACIS	ACIS	Obspar format version number	7	7
Detector	ACIS-235678	ACIS-235678	Obspar file type	PREDICTED	ACTUAL
Grating	NONE	NONE	Obspar update status	NONE	UPDATED
Data mode	FAINT	FAINT	Number of optional ACIS chips dropped	0	0
Observation mode	POINTING	POINTING	On-chip summing requested	N	N
[deg] Pointing RA	190.107499	190.0796879807112	Subarray requested	NONE	NONE
[deg] Pointing Dec	15.933891	15.93930942937594	Alternating exposures requested	N	N
[deg] Pointing Roll	137.653291	137.8174775936428	[s] Primary exposure time	0.000000	3.2
[mm] SIM focus pos	-0.684267	-0.6828225247311905			
[mm] SIM defocus	0	0.001444936568705701			
[mm] SIM translation stage pos	-190.132523	-190.1425803651734			
[mm] SIM translation stage offset	0	0.01005778216563158			
[s] Observation start time (MET)	290560831.184000	290559581.04163			
Observation start date	2007-03-17T23:19:26	2007-03-17T22:59:41			
[s] Observation end time (MET)	290566031.184000	290566883.14197			
Observation end date	2007-03-18T00:46:06	2007-03-18T01:01:23			
Read mode	TIMED	TIMED			

2.3 Aspect



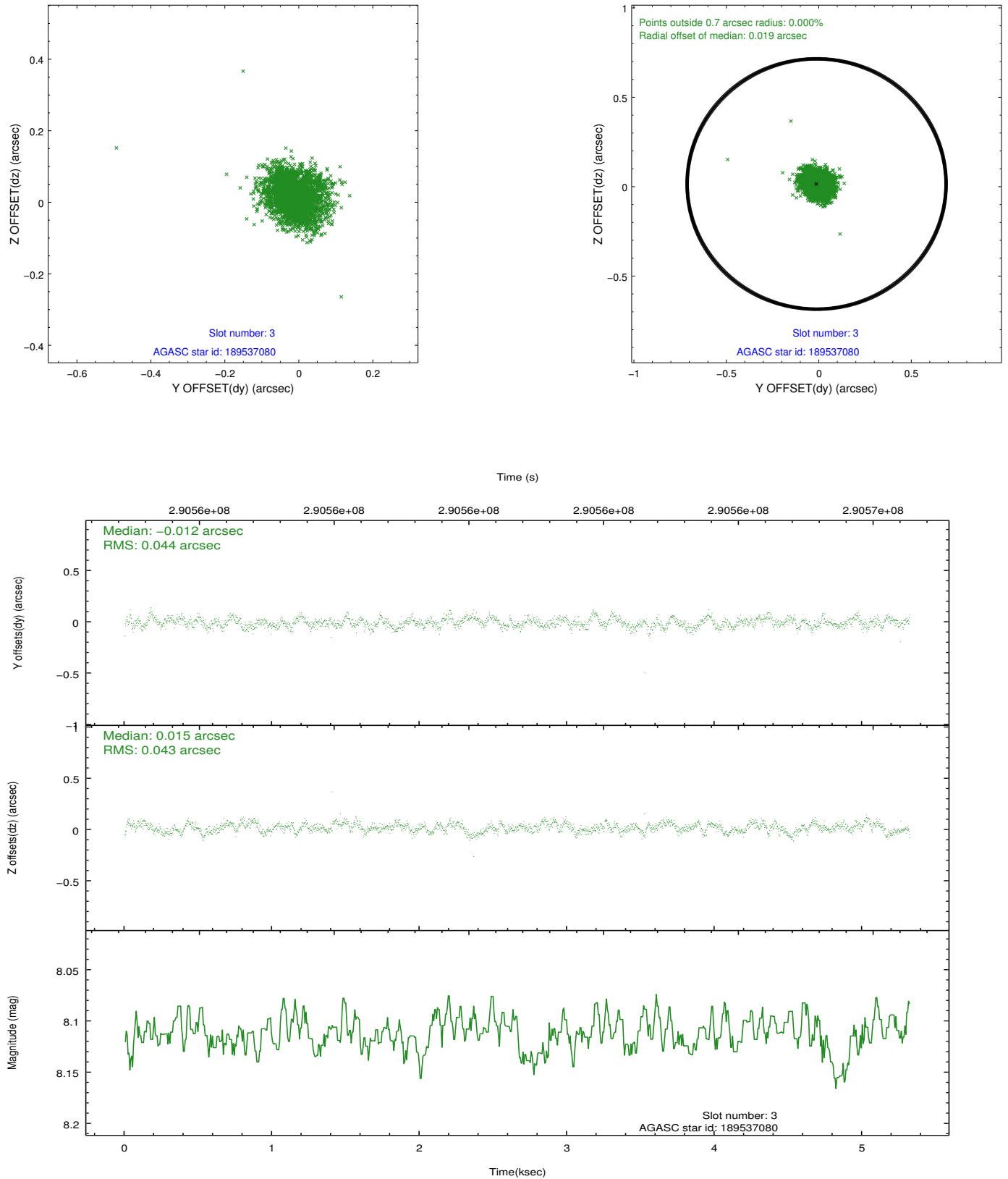


Slot Statistics

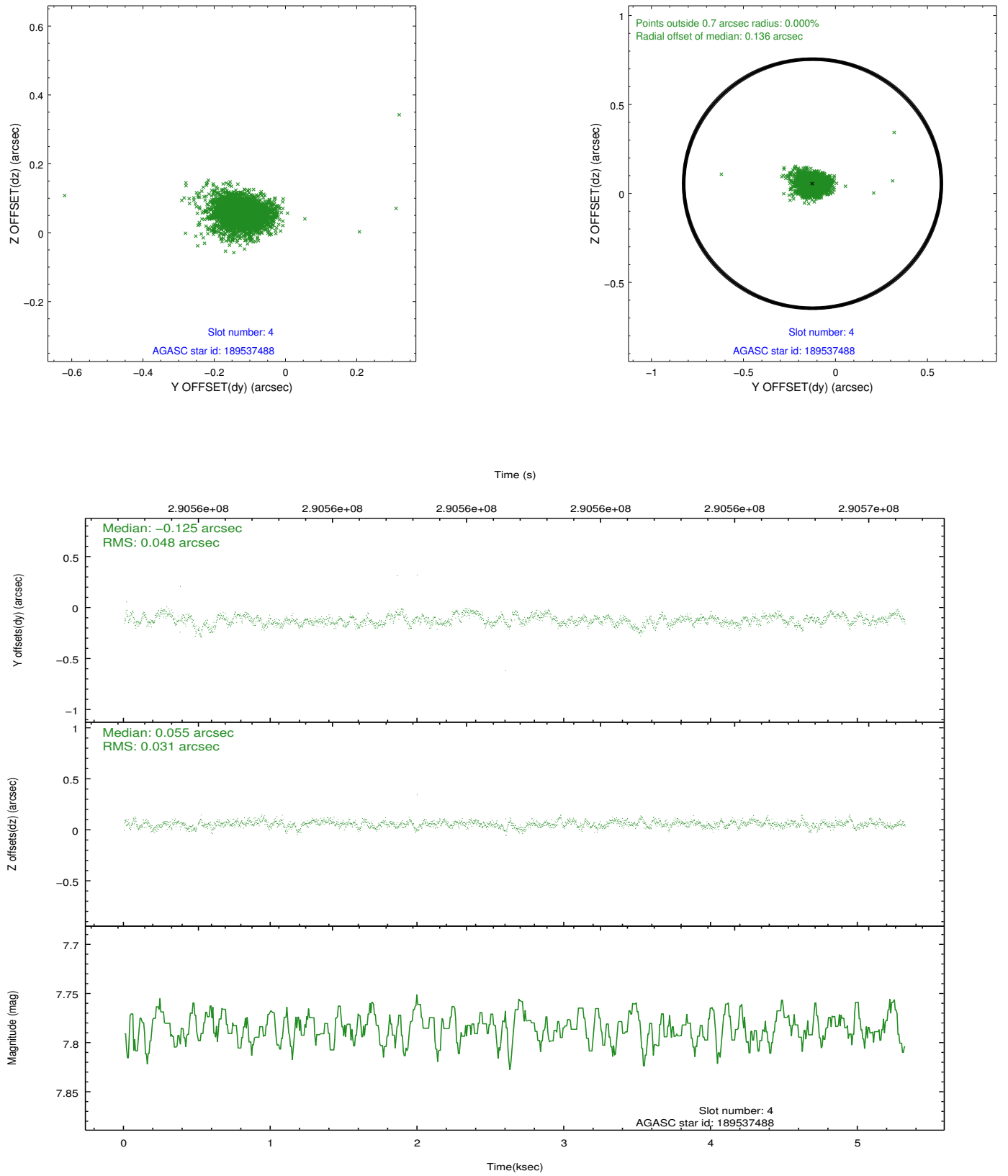
slot	status	id	mag	n_pts	med_dy	med_dz	dr1	dr2	ra	dec	mean_y	mean_z
0	FID	ACIS-S-2	7.09	1298	-0.055	-0.030	0.006	0.011	0.000000	0.000000	-766.45	-1736.95
1	FID	ACIS-S-4	7.19	1298	0.193	0.035	0.007	0.012	0.000000	0.000000	2146.54	170.45
2	FID	ACIS-S-5	7.23	1298	-0.169	0.004	0.007	0.012	0.000000	0.000000	-1817.97	165.34
3	GUIDE	189537080	8.11	2595	-0.012	0.015	0.064	0.102	190.121612	16.279339	802.49	-951.31
4	GUIDE	189537488	7.79	2591	-0.125	0.055	0.058	0.095	189.788372	16.479780	2139.82	-710.30
5	GUIDE	189539224	7.61	2595	0.212	-0.077	0.059	0.100	190.277008	15.376622	-1787.36	1087.52
6	GUIDE	189539496	9.25	2593	0.003	-0.047	0.085	0.138	189.792861	15.435545	-401.52	2061.52
7	GUIDE	189540176	9.25	2589	-0.077	0.055	0.107	0.172	189.801571	16.510067	2178.85	-820.57

2.4 Star Slots

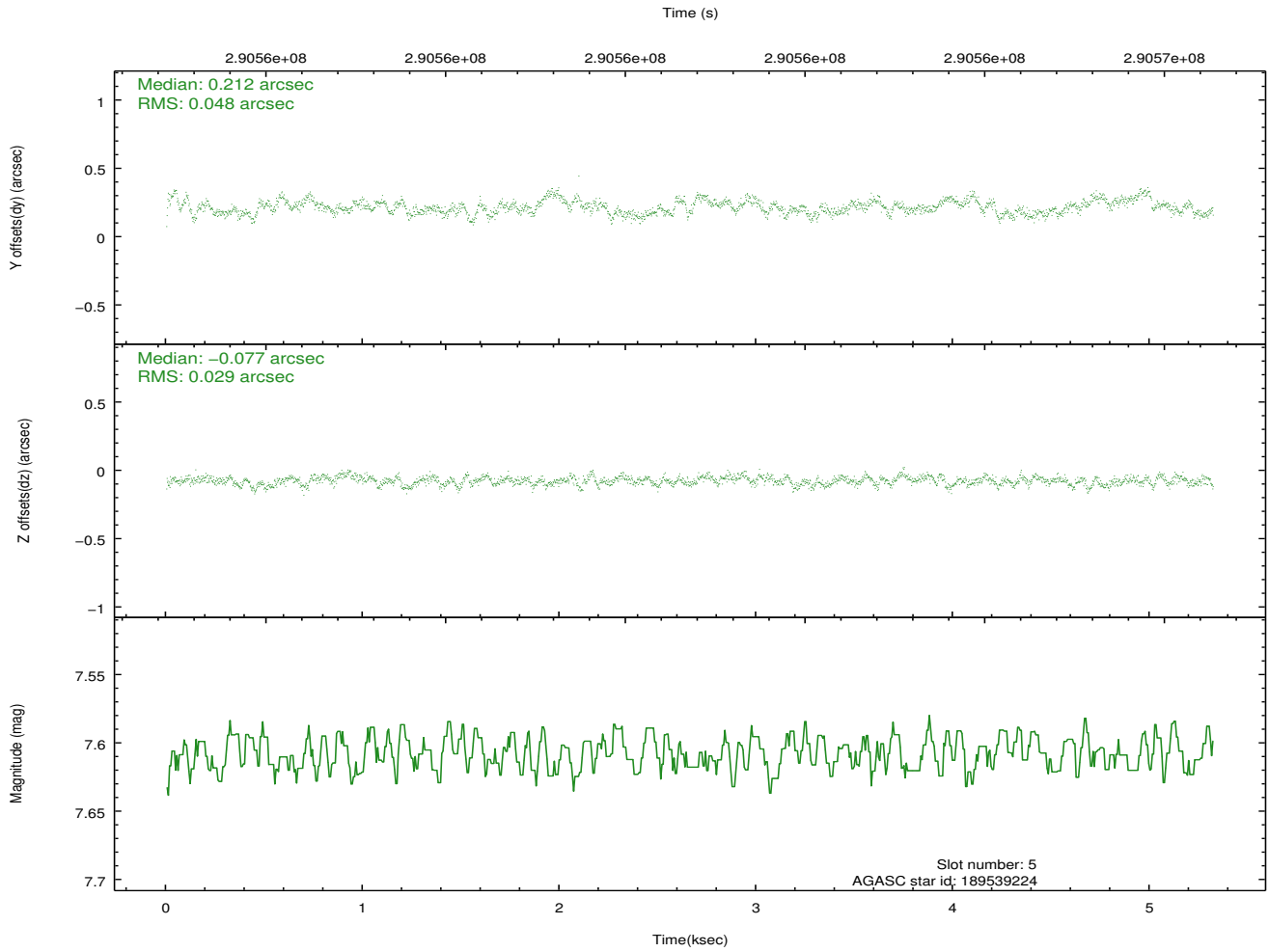
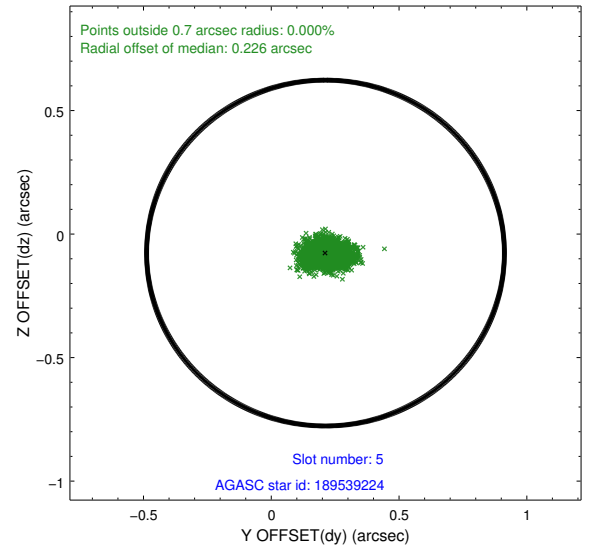
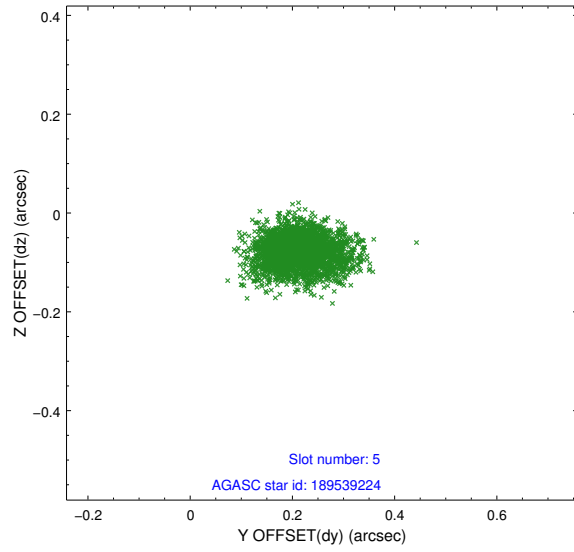
2.4.1 Slot 3



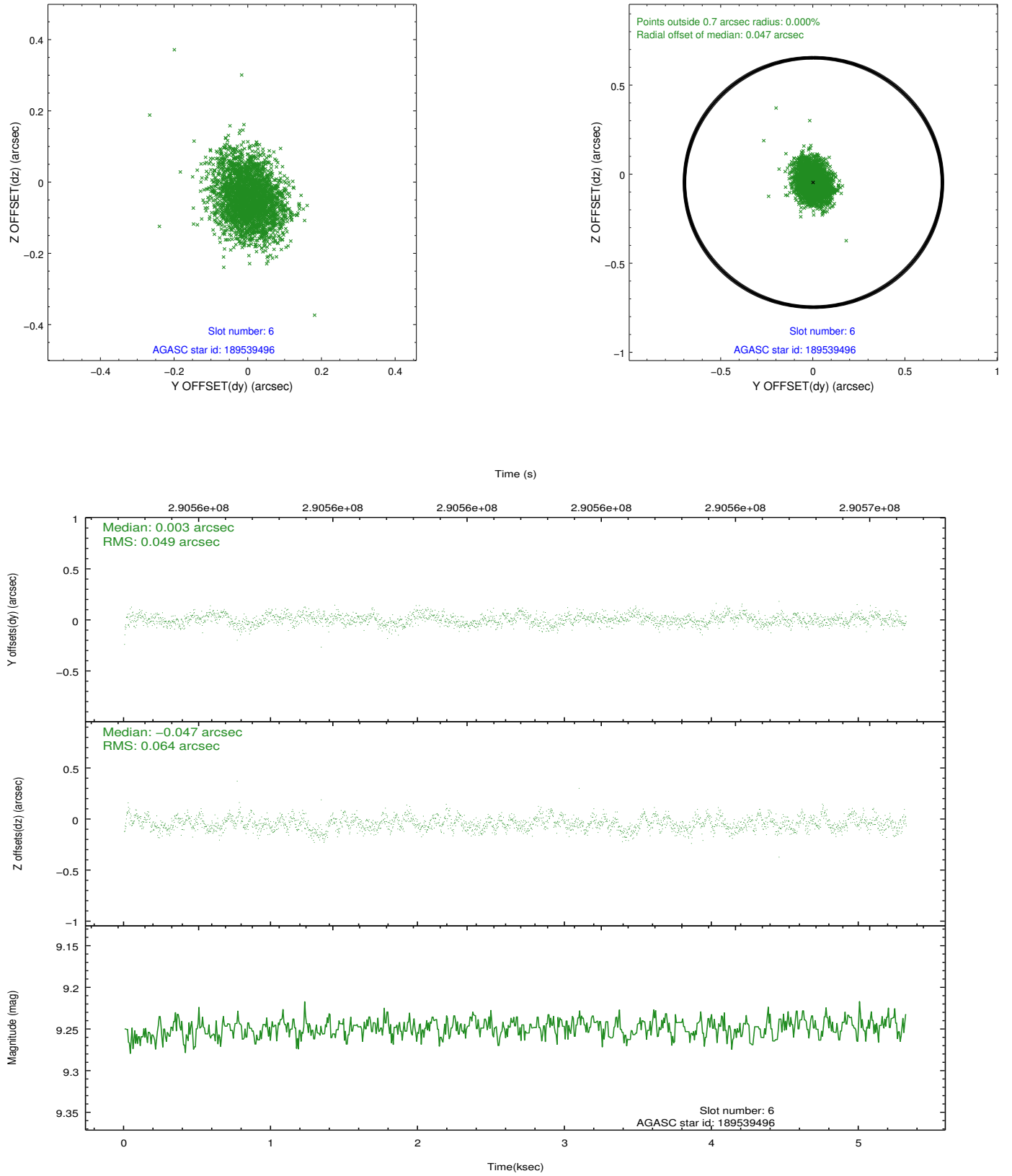
2.4.2 Slot 4



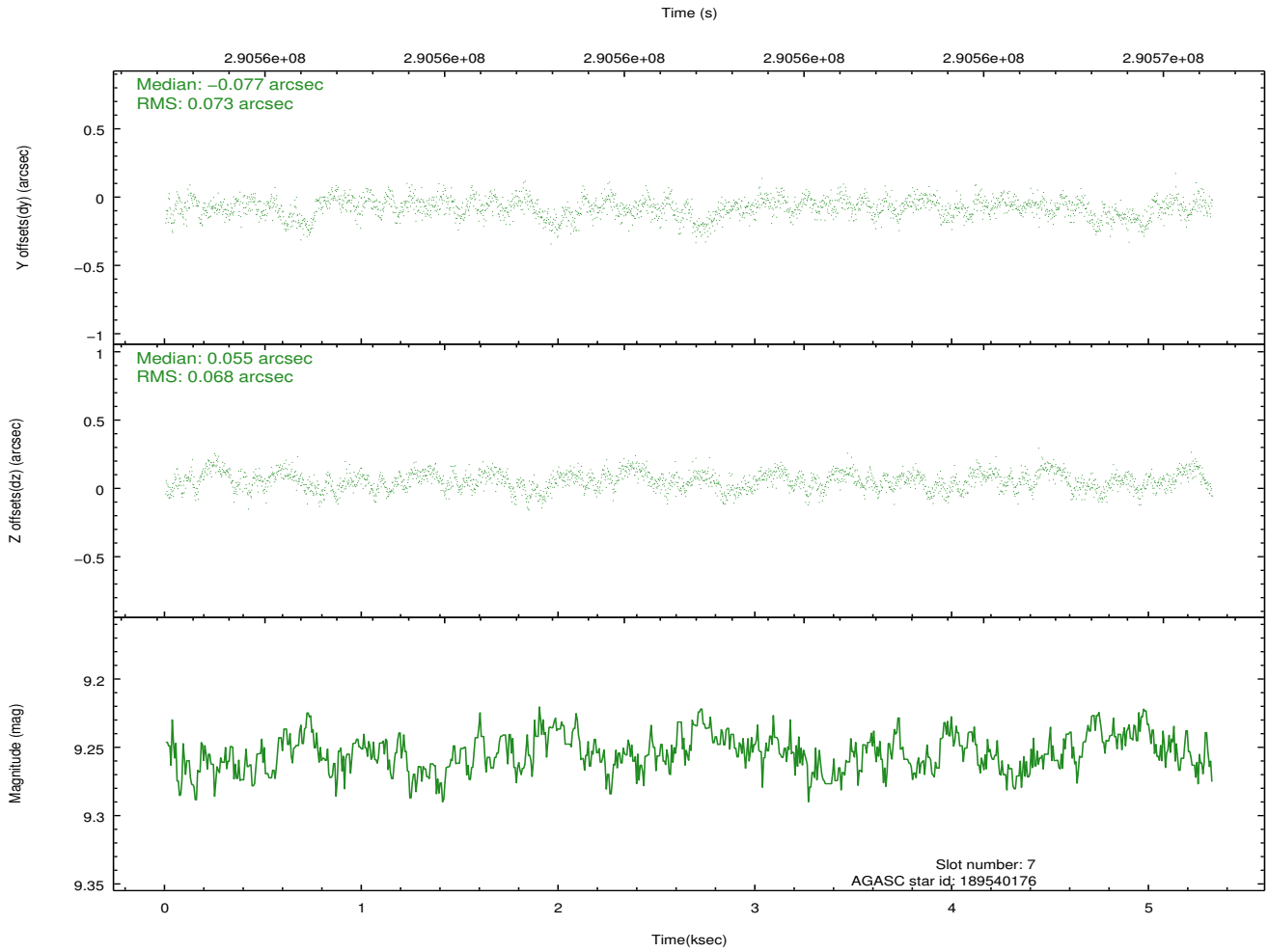
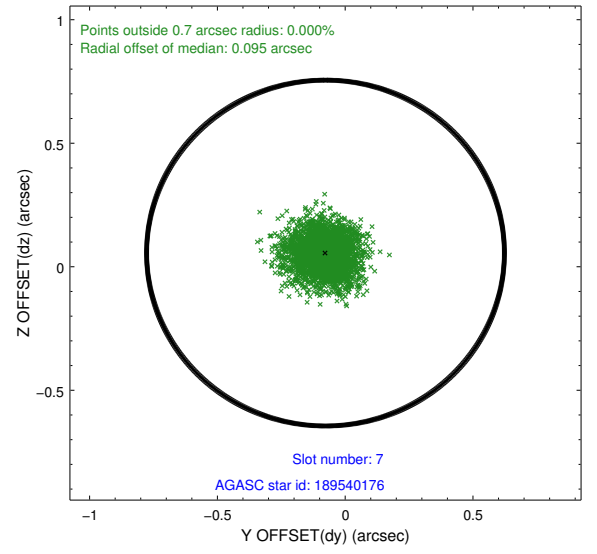
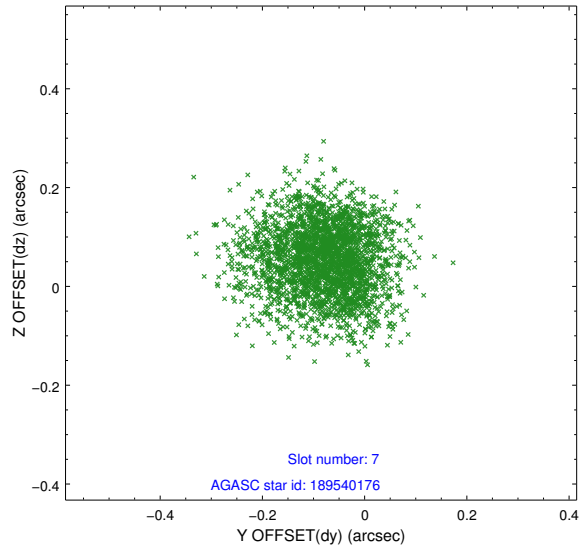
2.4.3 Slot 5



2.4.4 Slot 6

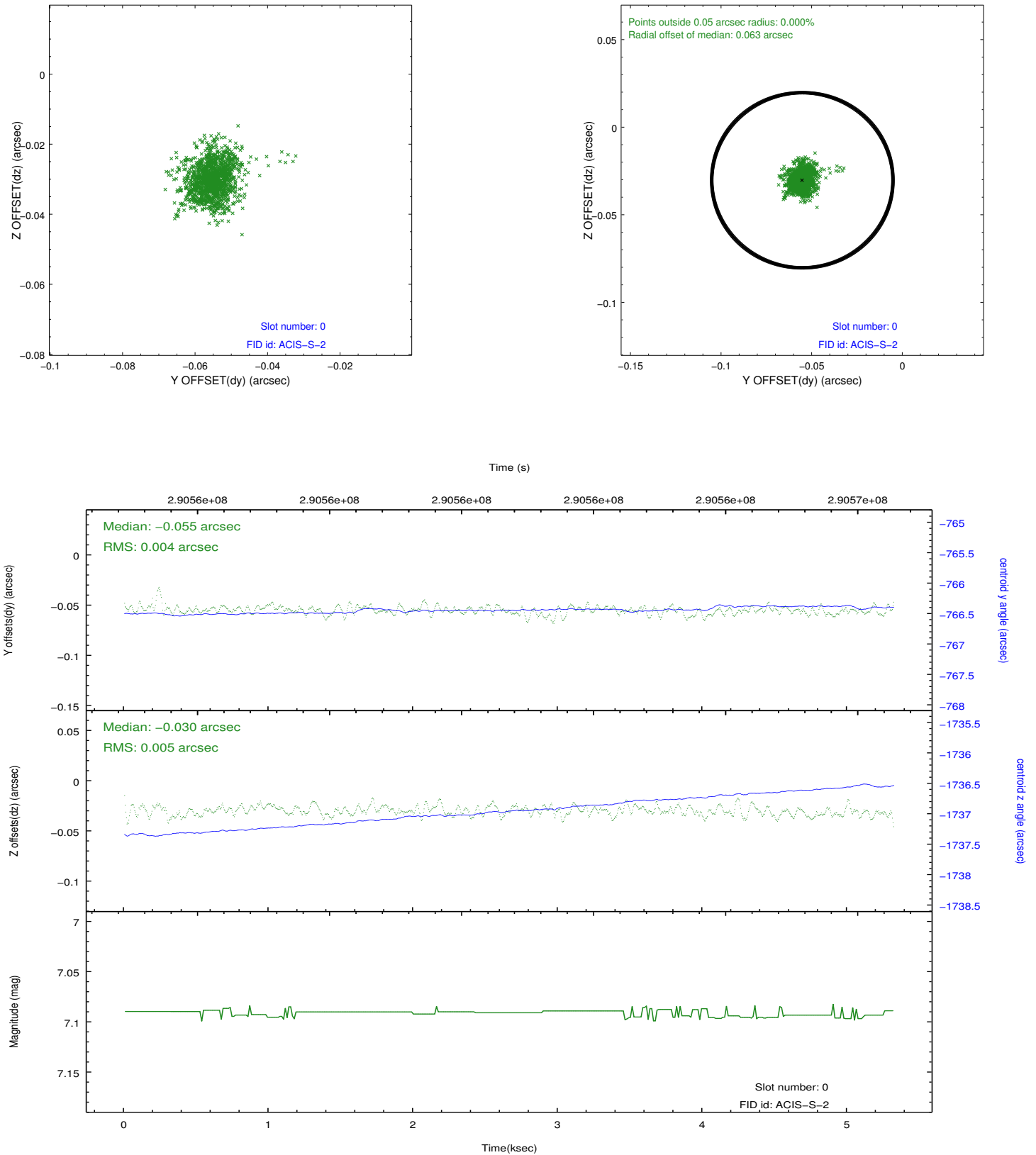


2.4.5 Slot 7

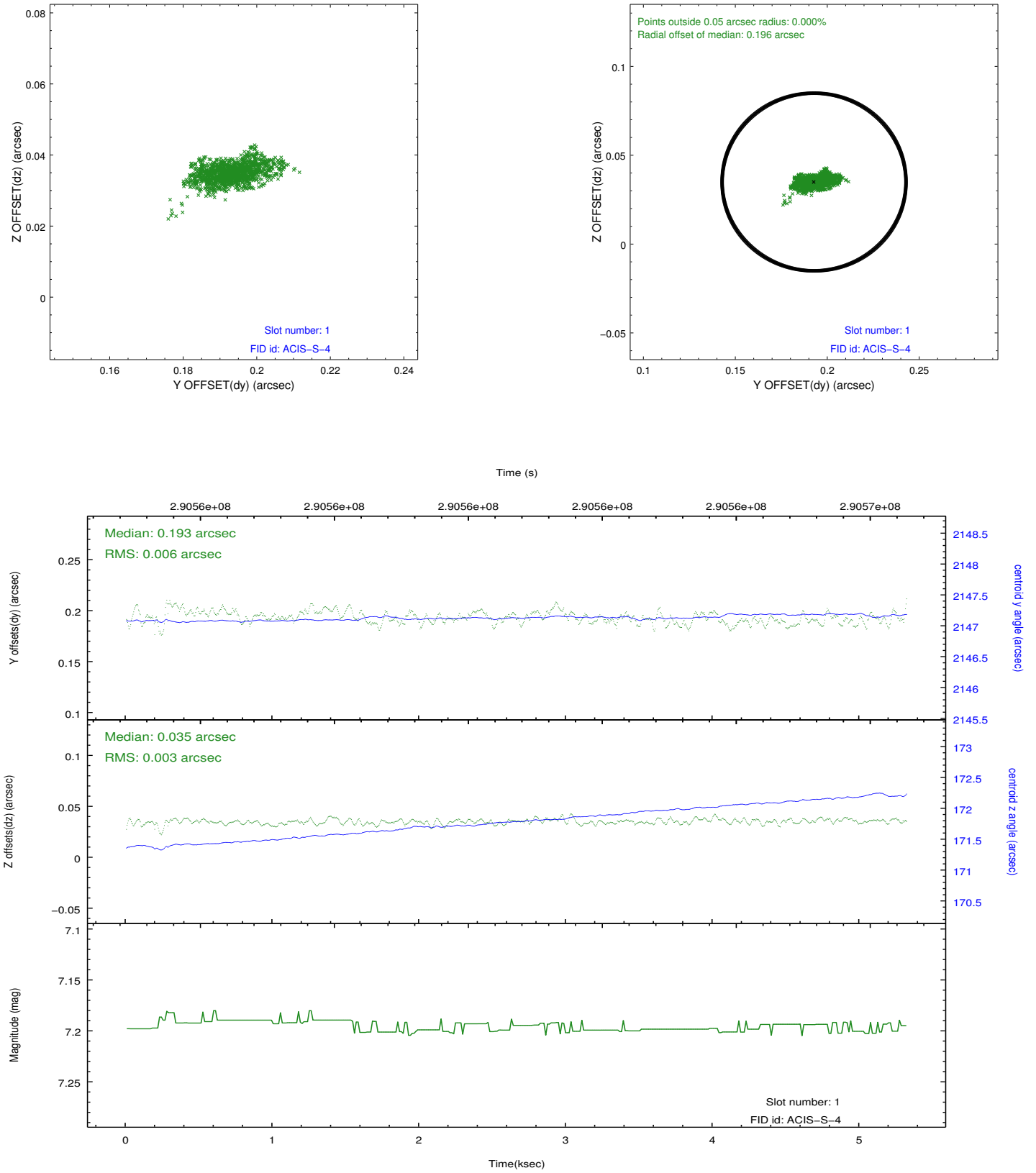


2.5 FID Slots

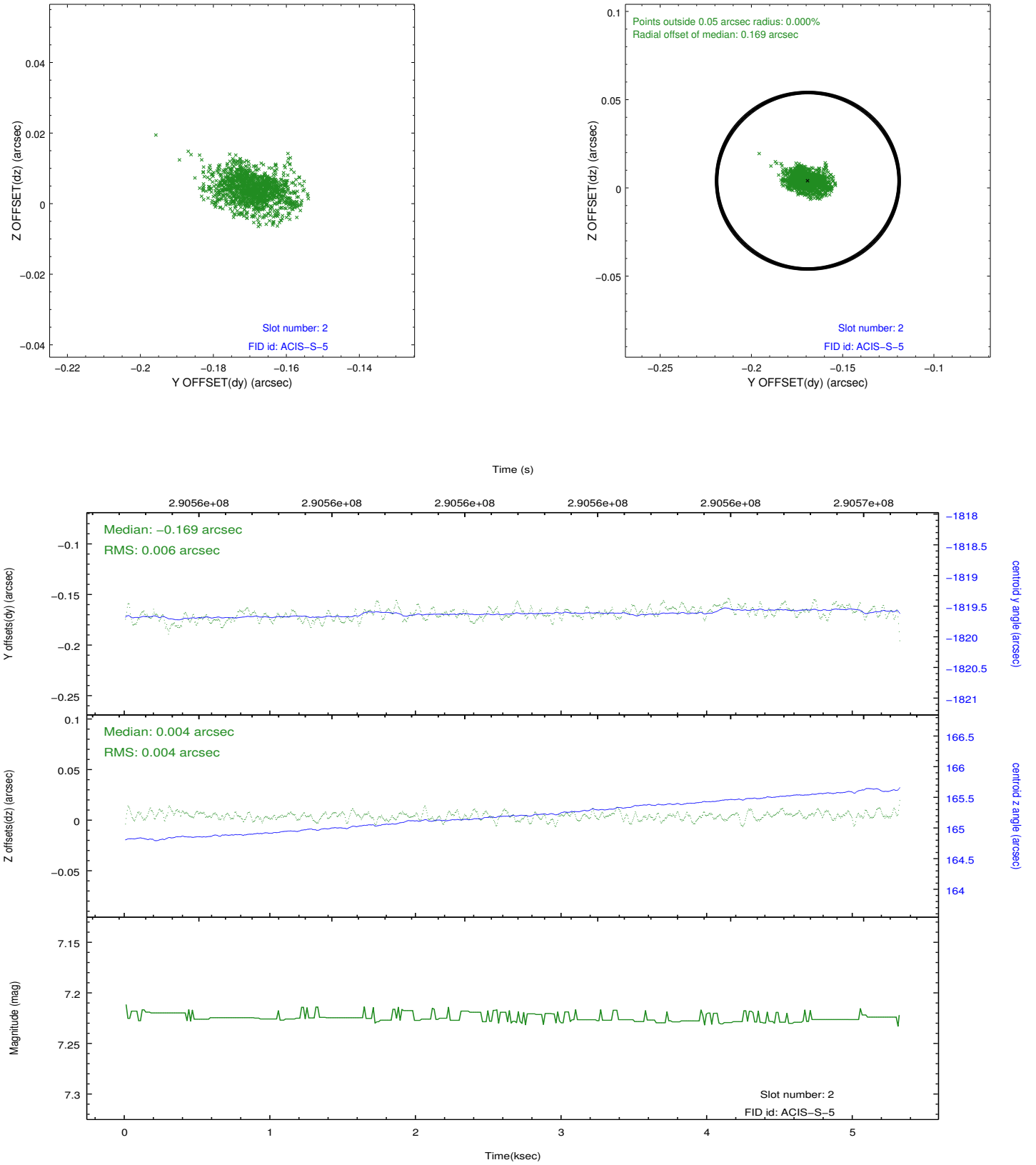
2.5.1 Slot 0



2.5.2 Slot 1



2.5.3 Slot 2



A Summary

A.1 Status

V&V Scientist	Jen Lauer
V&V Date (YYYY-MM-DD)	2012.04.23
V&V Edition	1
V&V Disposition and Status	OK
V&V Charge Time	5.31519998

A.2 Comments

Joint Proposal: Spitzer