

V&V Reference Report

L2 ASCDS Version : 8.4.4

Observation 7834 - L2 Version 2
Chandra X-Ray Center

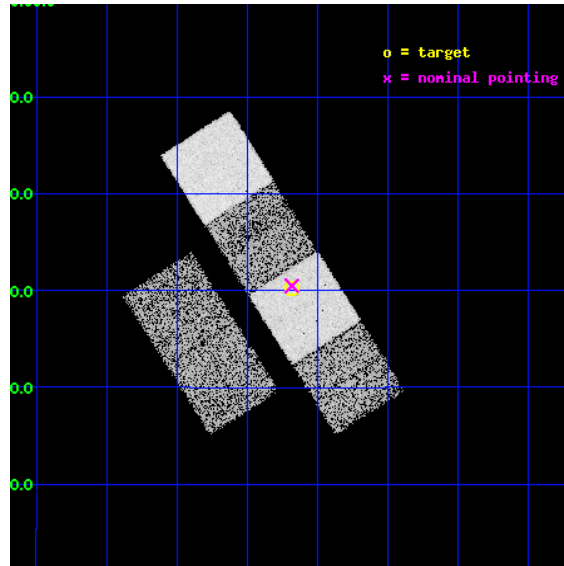
L2 Processing Date : May 4 2012

Contents

1	Front	2
2	OBI	3
2.1	OBI	3
2.1.1	Images	3
2.1.2	Bias	3
2.1.3	Parameters	4
2.1.4	Events	4
2.2	Compared Parameters	5
2.3	Aspect	6
2.4	Star Slots	9
2.4.1	Slot 3	9
2.4.2	Slot 4	10
2.4.3	Slot 5	11
2.4.4	Slot 6	12
2.4.5	Slot 7	13
2.5	FID Slots	14
2.5.1	Slot 0	14
2.5.2	Slot 1	15
2.5.3	Slot 2	16
A	Summary	17
A.1	Status	17
A.2	Comments	17

1 Front

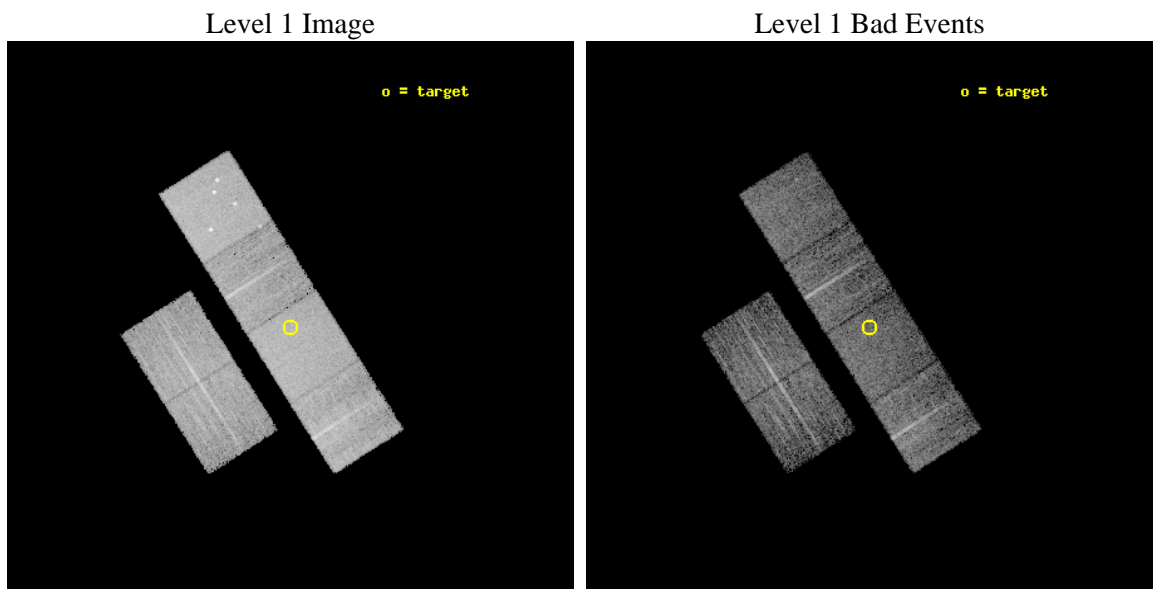
seq_num	701498	Sequence number
obs_id	7834	Observation id
title	Demographics of black holes in the local Universe.	Proposal title
observer	Prof. Smita Mathur	Principal investigator
object	NGC 4299	Source name
dtcycle	0	
cycle	P	events from which exps? Prim/Second/Both
ra_targ	185.420417	Observer's specified target RA [deg]
dec_targ	11.503389	Observer's specified target Dec [deg]
ra_nom	185.42052177455	Nominal RA [deg]
dec_nom	11.508246027591	Nominal Dec [deg]
roll_nom	57.630421005968	Nominal Roll [deg]
revision	2	Processing version of data
ontime	5126.3999809623	Sum of GTIs [s]
livetime	5061.4864176559	Livetime [s]
ontime2	5126.3999809623	Sum of GTIs [s]
ontime3	5126.3999809623	Sum of GTIs [s]
ontime5	5126.3999809623	Sum of GTIs [s]
ontime6	5126.3999809623	Sum of GTIs [s]
ontime7	5126.3999809623	Sum of GTIs [s]
ontime8	5126.3999809623	Sum of GTIs [s]
l2events	81451	Number of level 2 events



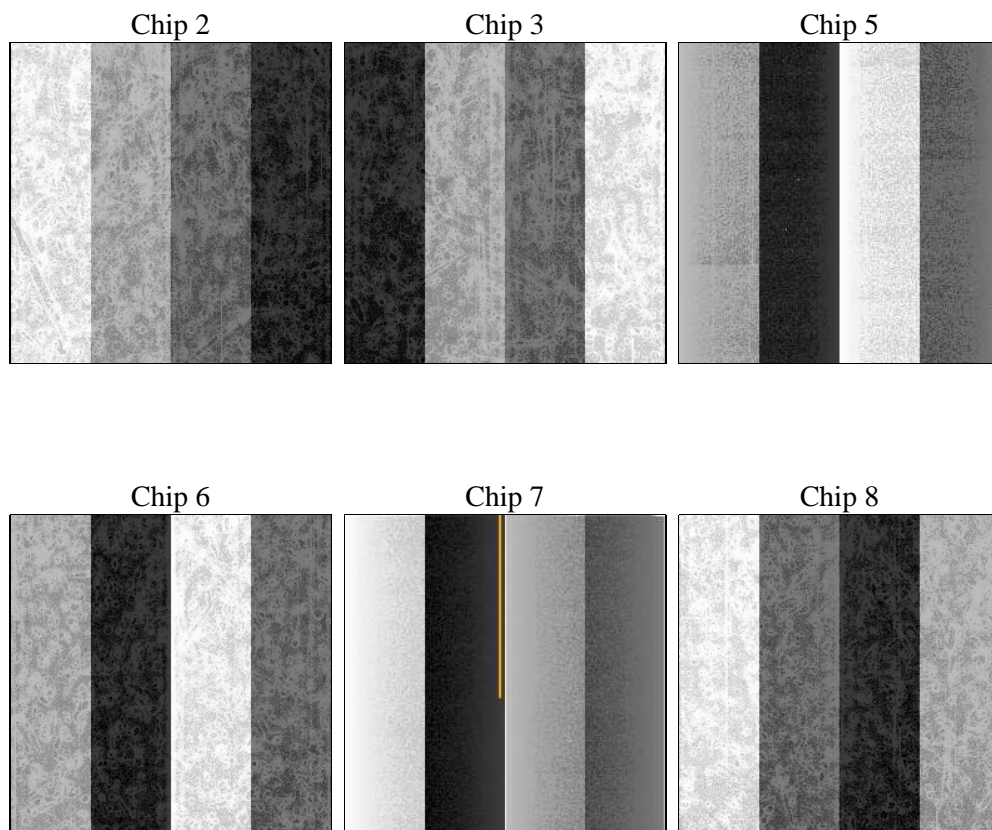
2 OBI

2.1 OBI

2.1.1 Images



2.1.2 Bias



2.1.3 Parameters

obi_num	0	Obi number	sched_exp_time	5000.000000	[s] Scheduled observation exposure time
ascdsver	8.4.4	Processing system revision	ontime	5126.3999809623	Sum of GTIs [s]
caldbver	4.4.9	 	ontime2	5126.3999809623	Sum of GTIs [s]
date	2012-05-04T14:49:43	Date and time of file creation	ontime3	5126.3999809623	Sum of GTIs [s]
revision	2	Processing version of data	ontime5	5126.3999809623	Sum of GTIs [s]
			ontime6	5126.3999809623	Sum of GTIs [s]
			ontime7	5126.3999809623	Sum of GTIs [s]
			ontime8	5126.3999809623	Sum of GTIs [s]
			l1events	369436	Number of level 1 events

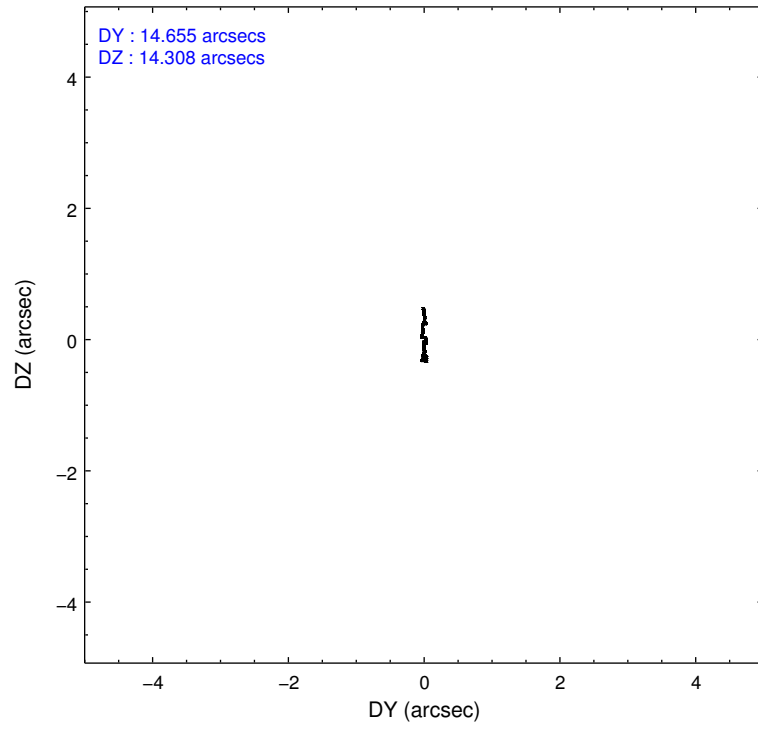
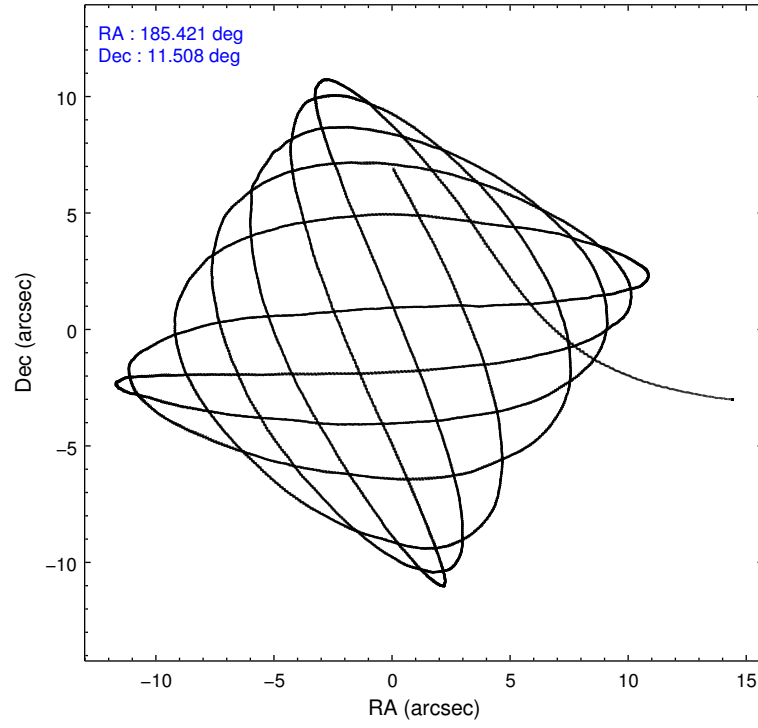
2.1.4 Events

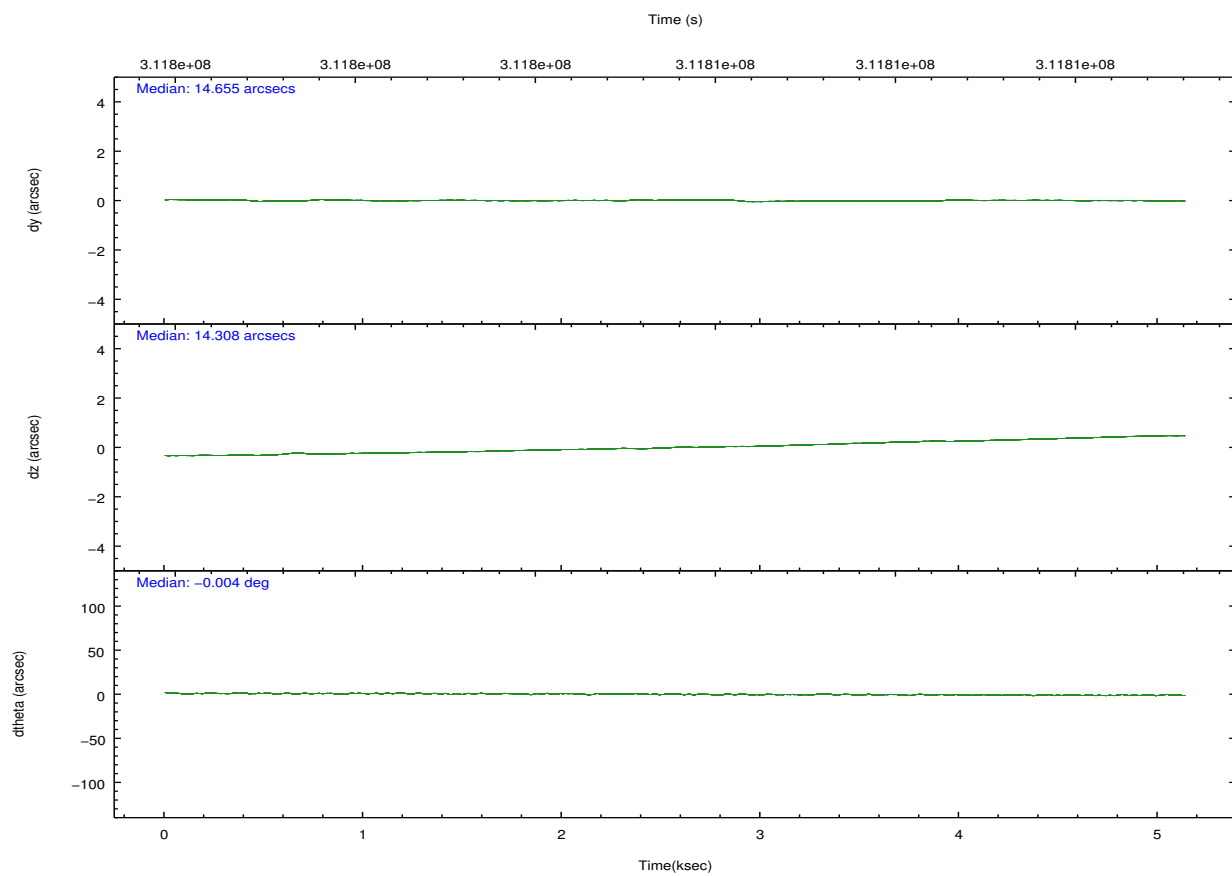
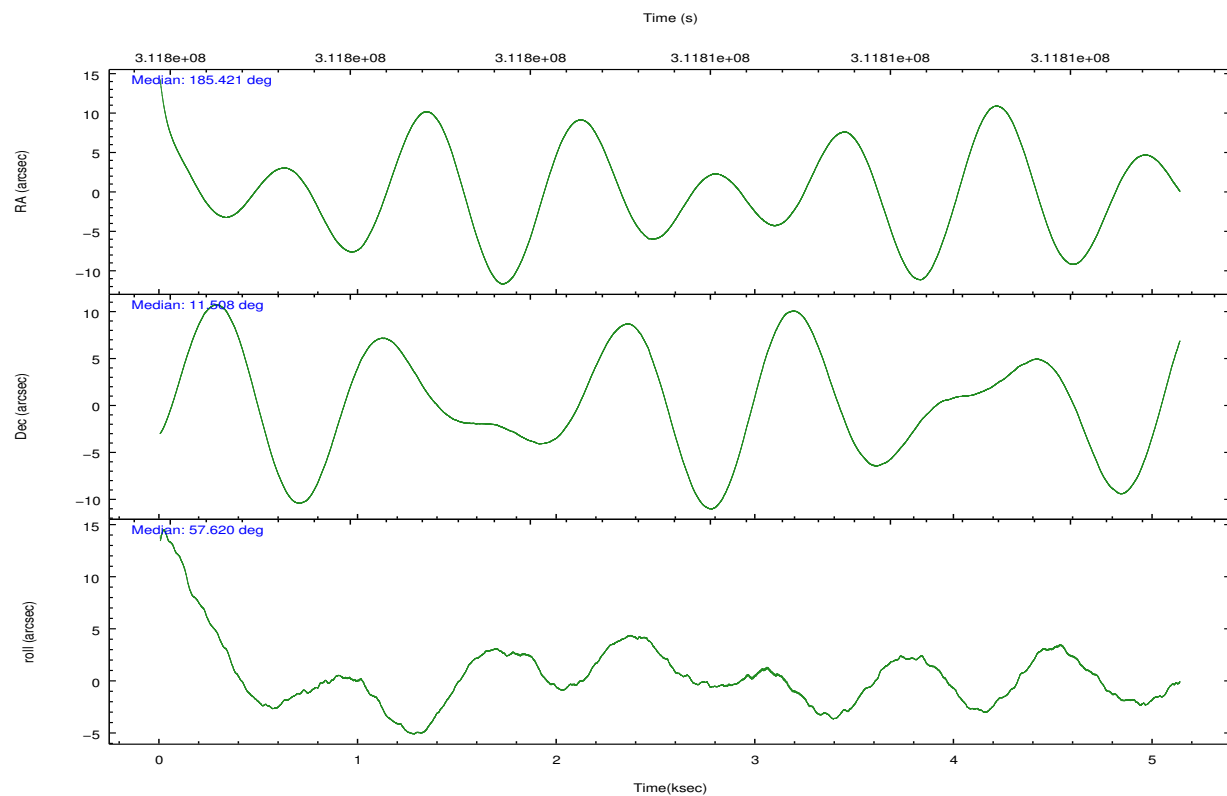
	ccd 2	ccd 3	ccd 5	ccd 6	ccd 7	ccd 8		ccd 2	ccd 3	ccd 5	ccd 6	ccd 7	ccd 8
level 1 events	52227	48888	81676	49930	71462	65253	grade 0 events	2851	2661	5355	2431	2558	4538
rejected events	46254	43153	45031	44001	43059	51326		5%	5%	6%	4%	3%	6%
rejected %	88%	88%	55%	88%	60%	78%	grade 1 events	40	32	221	27	70	59
								0%	0%	0%	0%	0%	0%
							grade 2 events	1248	1186	11281	1349	6082	3289
								2%	2%	13%	2%	8%	5%
							grade 3 events	580	539	1207	591	2441	1531
								1%	1%	1%	1%	3%	2%
							grade 4 events	532	561	1186	541	2429	1424
								1%	1%	1%	1%	3%	2%
							grade 5 events	2059	2354	5551	2395	6606	3122
								3%	4%	6%	4%	9%	4%
							grade 6 events	1038	1047	19260	1282	16119	3782
								1%	2%	23%	2%	22%	5%
							grade 7 events	43879	40508	37615	41314	35157	47508
								84%	82%	46%	82%	49%	72%

2.2 Compared Parameters

Parameter	Planned	Actual	Parameter	Planned	Actual
Instrument	ACIS	ACIS	Obspar format version number	7	7
Detector	ACIS-235678	ACIS-235678	Obspar file type	PREDICTED	ACTUAL
Grating	NONE	NONE	Obspar update status	NONE	UPDATED
Data mode	FAINT	FAINT	Number of optional ACIS chips dropped	0	0
Observation mode	POINTING	POINTING	On-chip summing requested	N	N
[deg] Pointing RA	185.419701	185.4205217745509	Subarray requested	NONE	NONE
[deg] Pointing Dec	11.480905	11.50824602759149	Alternating exposures requested	N	N
[deg] Pointing Roll	57.473953	57.63042100596807	[s] Primary exposure time	0.000000	3.2
[mm] SIM focus pos	-0.684267	-0.6828225247311905			
[mm] SIM defocus	0	0.001444936568705701			
[mm] SIM translation stage pos	-190.132523	-190.1425803651734			
[mm] SIM translation stage offset	0	0.01005778216563158			
[s] Observation start time (MET)	311803341.184000	311802178.16002			
Observation start date	2007-11-18T20:01:16	2007-11-18T19:42:58			
[s] Observation end time (MET)	311808341.184000	311808971.34784			
Observation end date	2007-11-18T21:24:36	2007-11-18T21:36:11			
Read mode	TIMED	TIMED			

2.3 Aspect



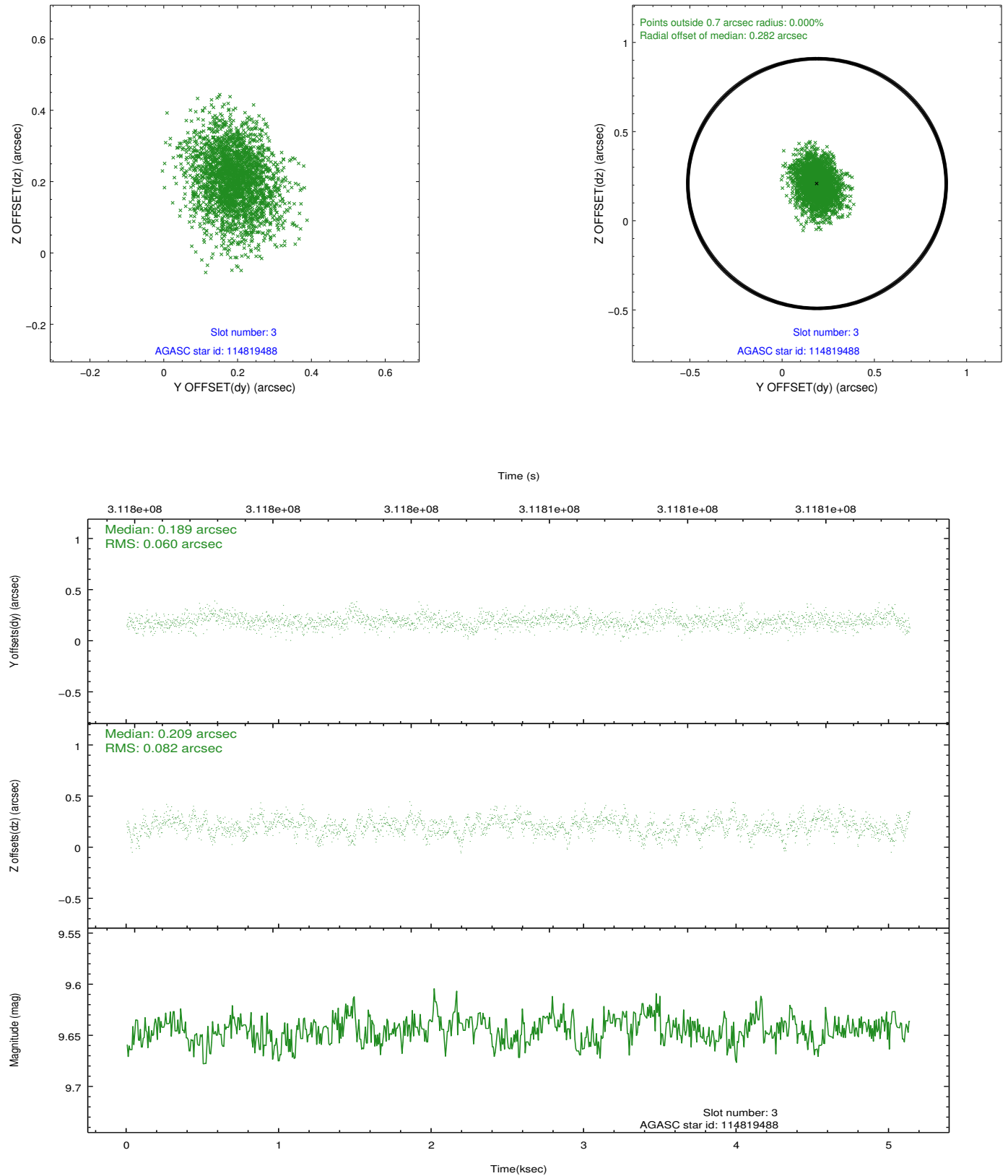


Slot Statistics

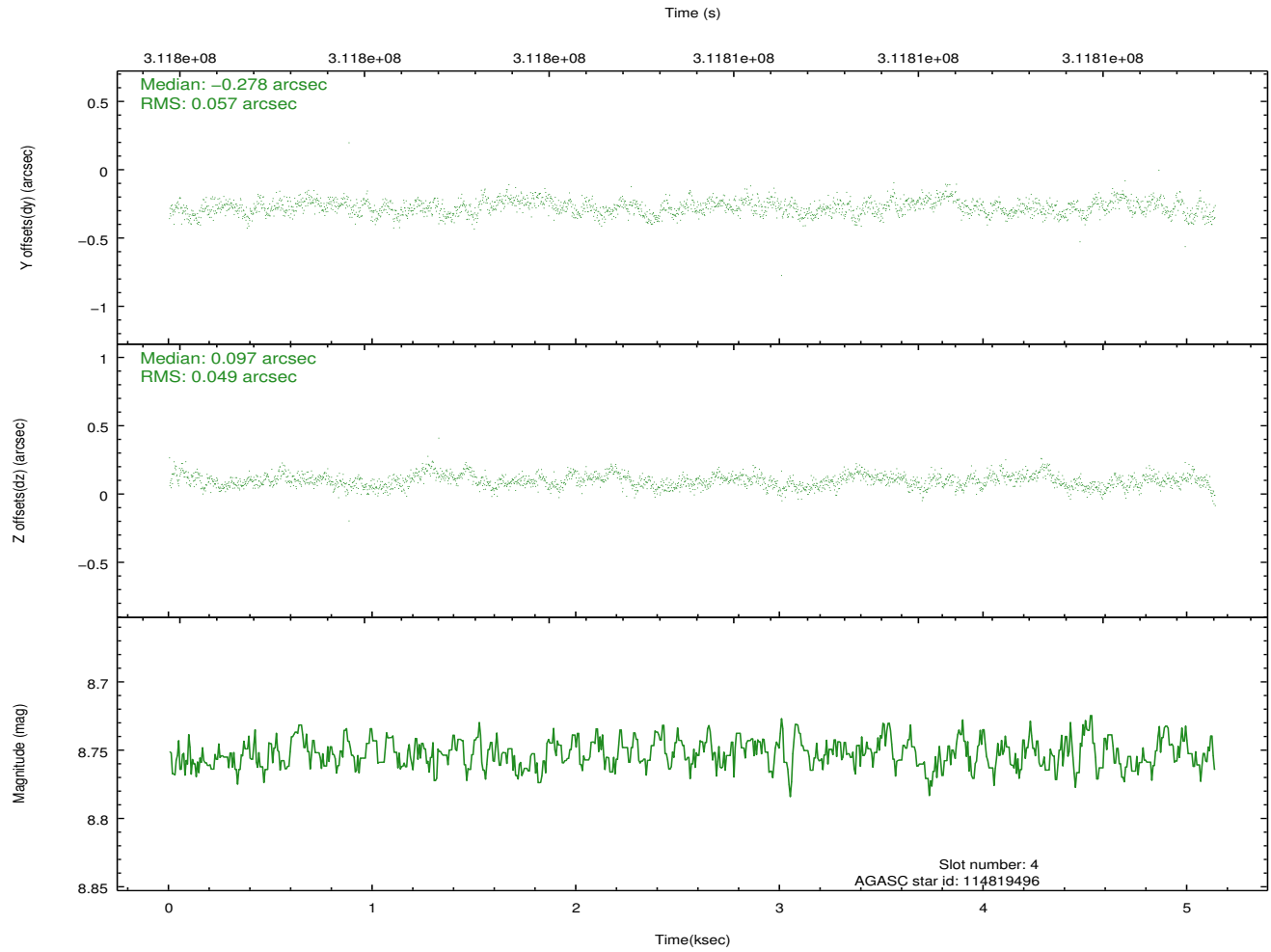
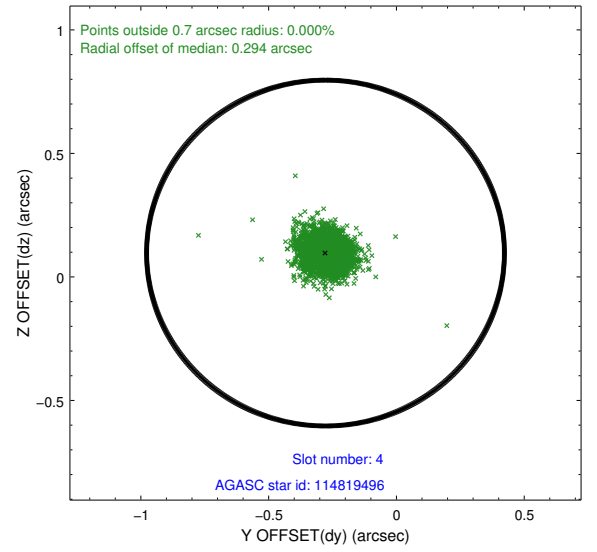
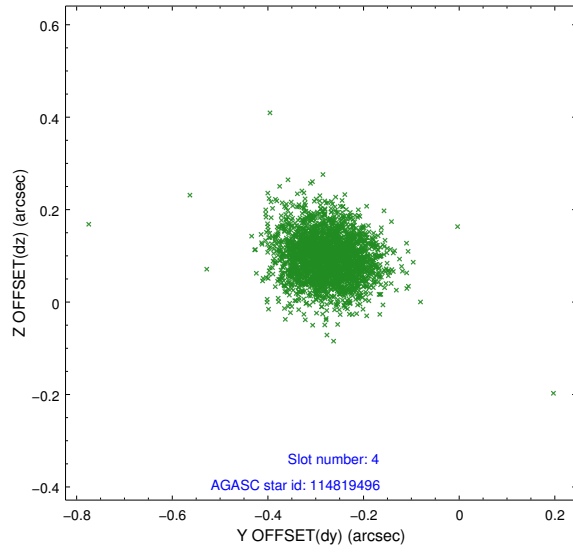
slot	status	id	mag	n_pts	med_dy	med_dz	dr1	dr2	ra	dec	mean_y	mean_z
0	FID	ACIS-S-2	7.09	1253	-0.086	-0.053	0.011	0.018	0.000000	0.000000	-767.70	-1735.69
1	FID	ACIS-S-4	7.19	1253	0.211	0.056	0.007	0.012	0.000000	0.000000	2145.33	171.68
2	FID	ACIS-S-5	7.22	1253	-0.155	0.006	0.011	0.017	0.000000	0.000000	-1819.10	166.64
3	GUIDE	114819488	9.65	2501	0.189	0.209	0.108	0.179	185.439323	11.182195	-868.97	-636.42
4	GUIDE	114819496	8.75	2503	-0.278	0.097	0.078	0.126	185.927253	11.920483	2296.58	-655.15
5	GUIDE	114819552	8.97	2501	0.114	-0.077	0.072	0.115	185.130690	11.375327	-867.35	655.71
6	GUIDE	114822360	6.76	2506	0.038	-0.281	0.058	0.091	184.966087	11.598578	-502.34	1577.37
7	GUIDE	114823144	9.23	2504	-0.067	0.052	0.090	0.145	185.759442	11.403801	411.27	-1158.67

2.4 Star Slots

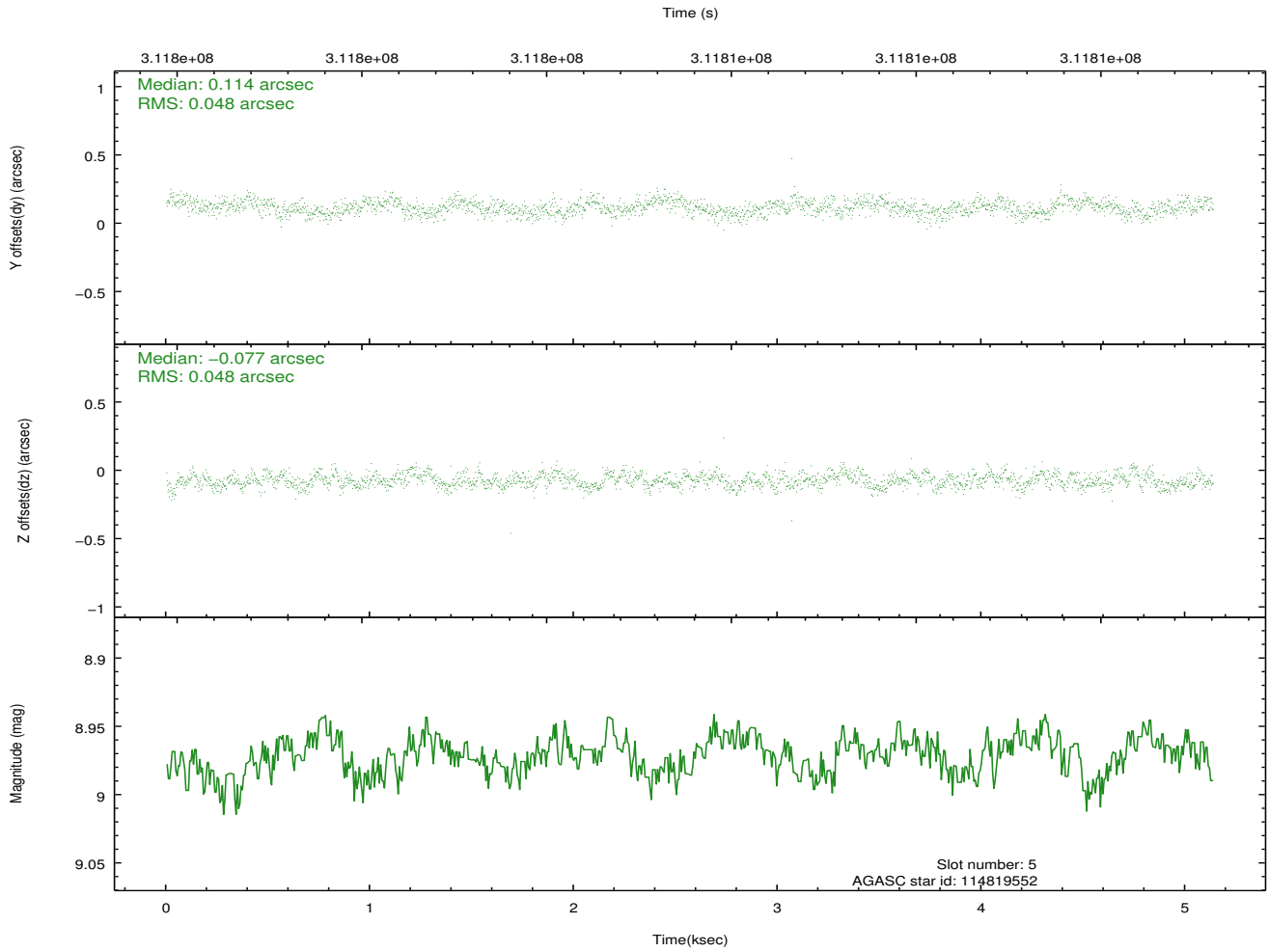
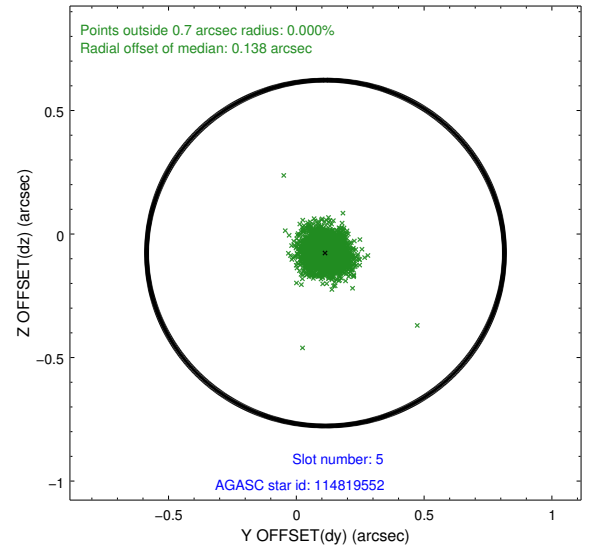
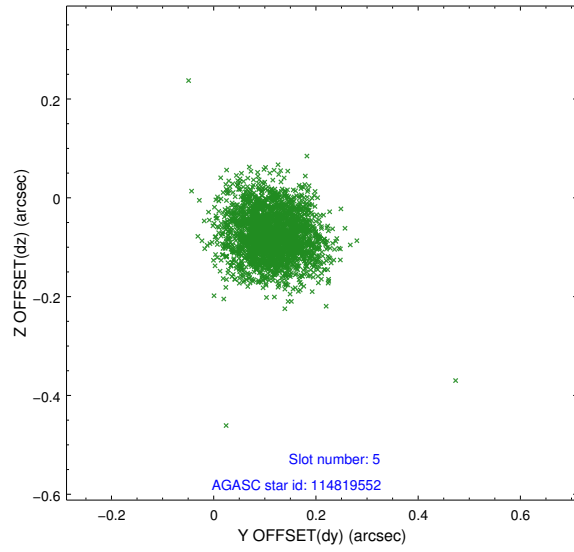
2.4.1 Slot 3



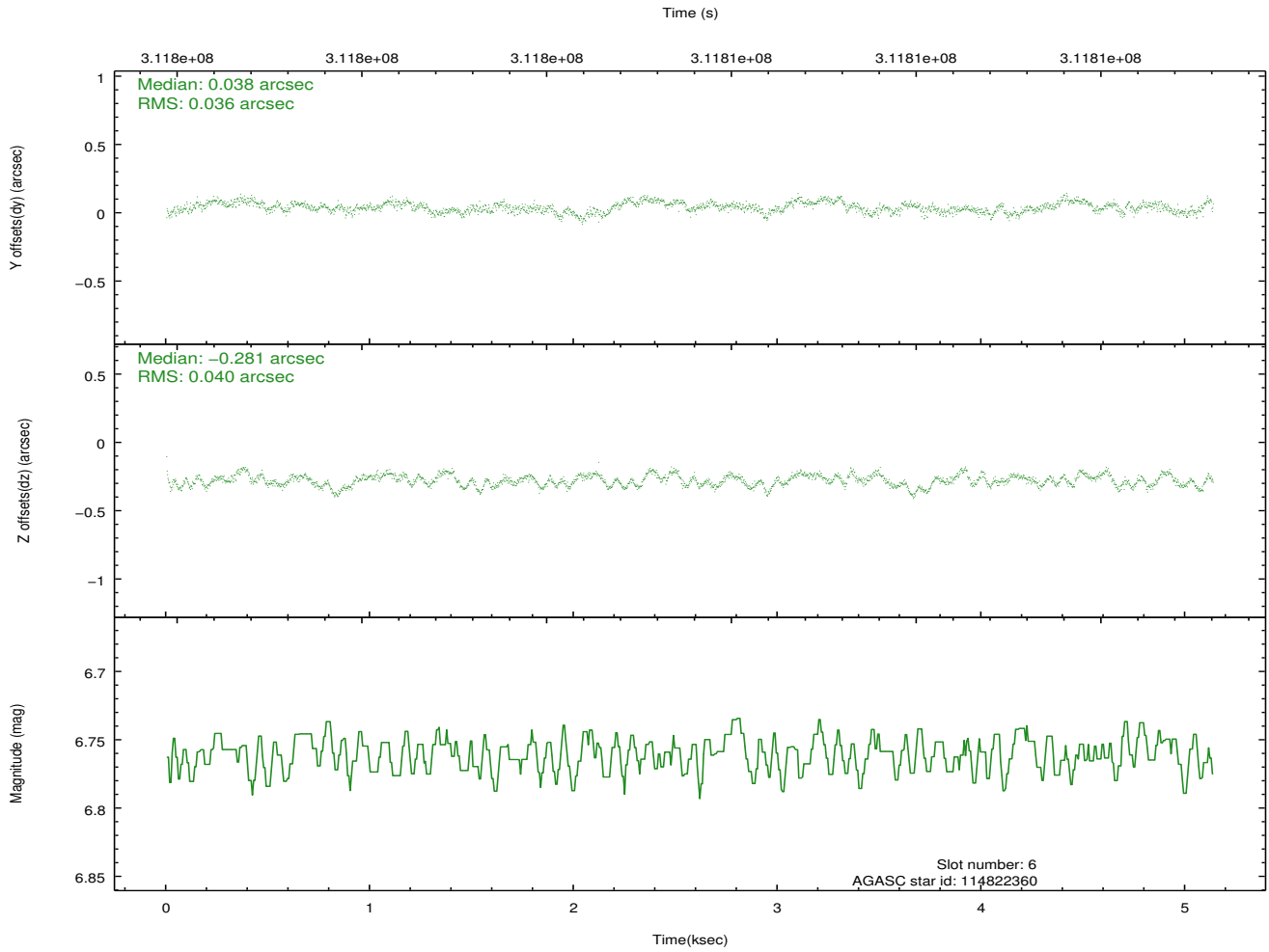
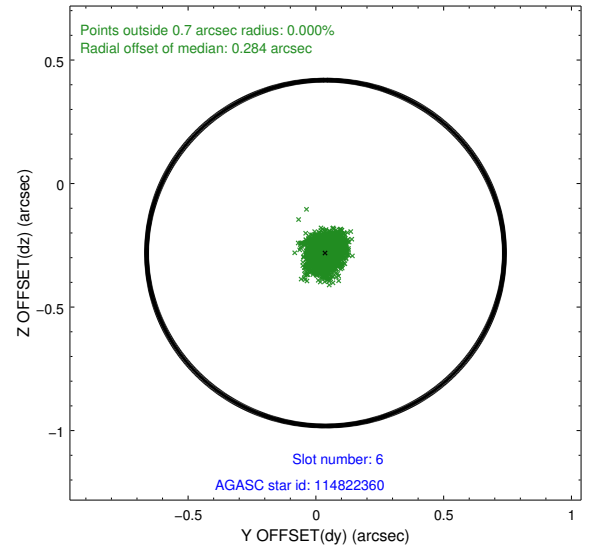
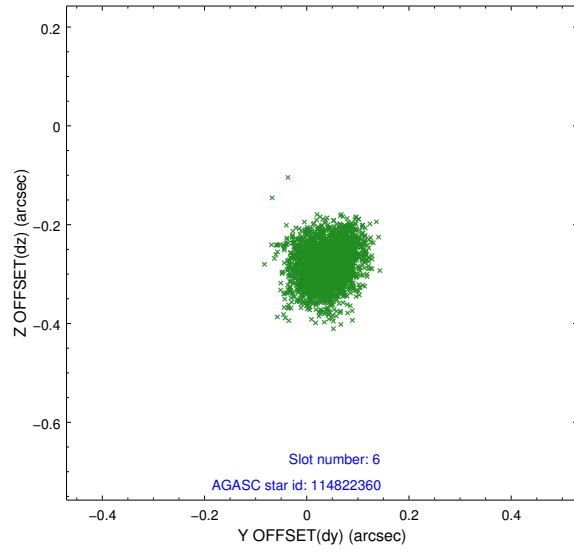
2.4.2 Slot 4



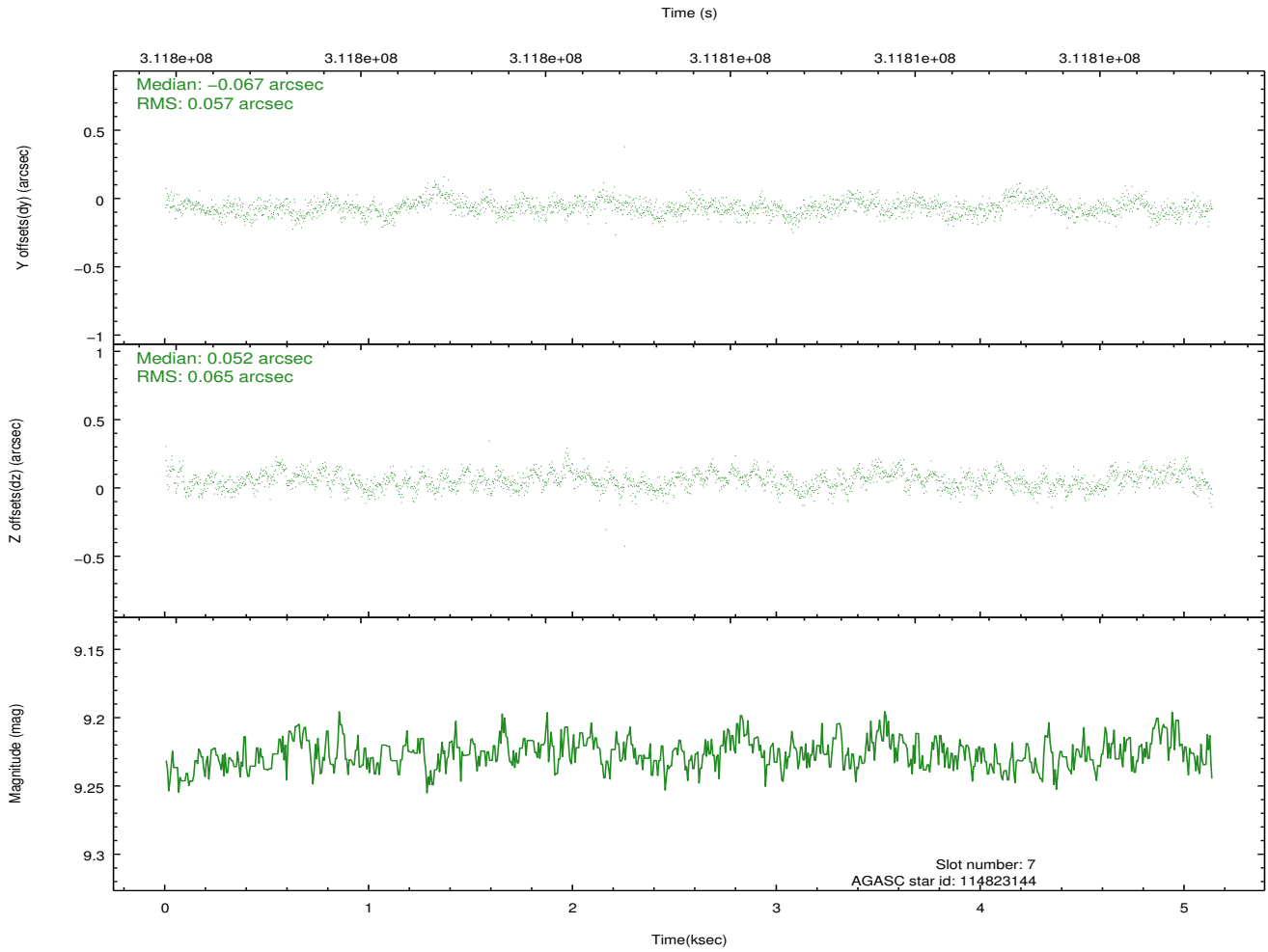
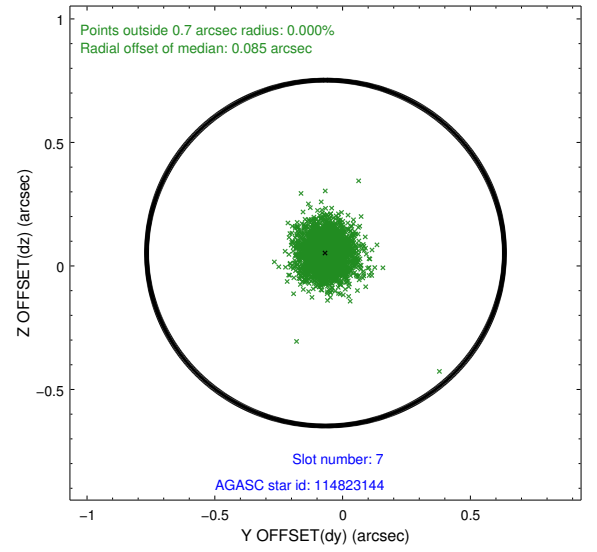
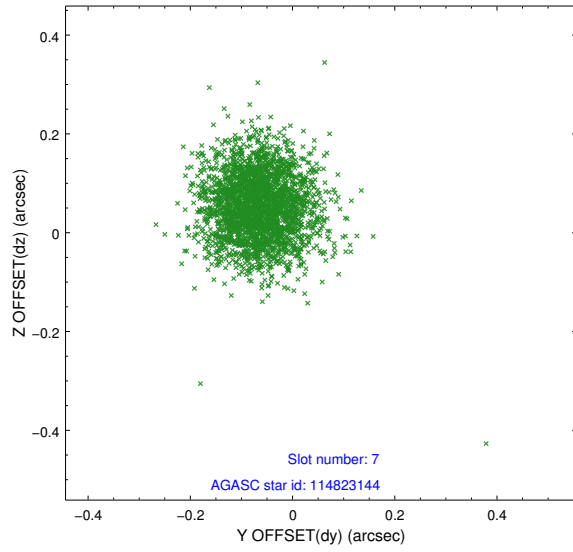
2.4.3 Slot 5



2.4.4 Slot 6

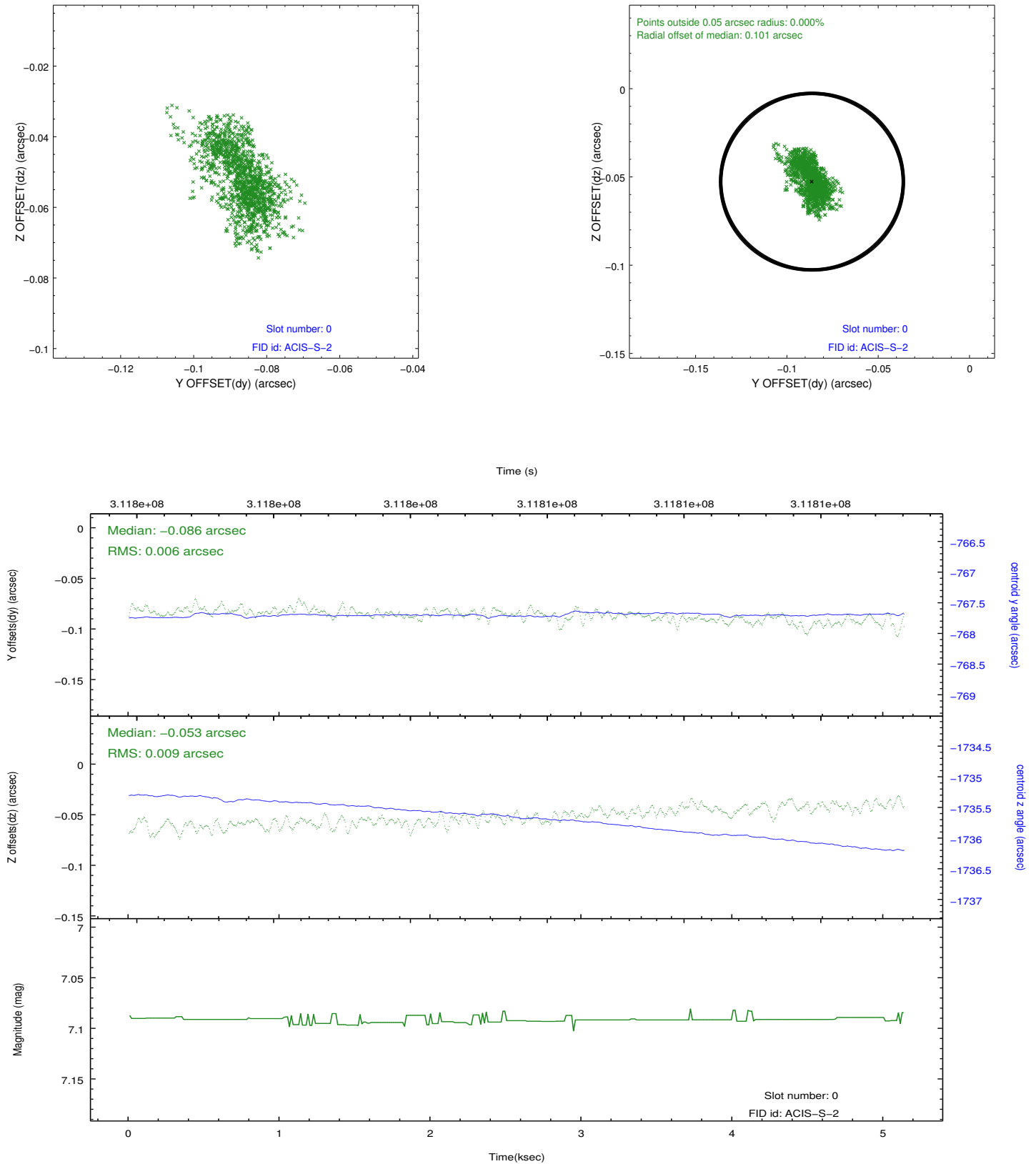


2.4.5 Slot 7

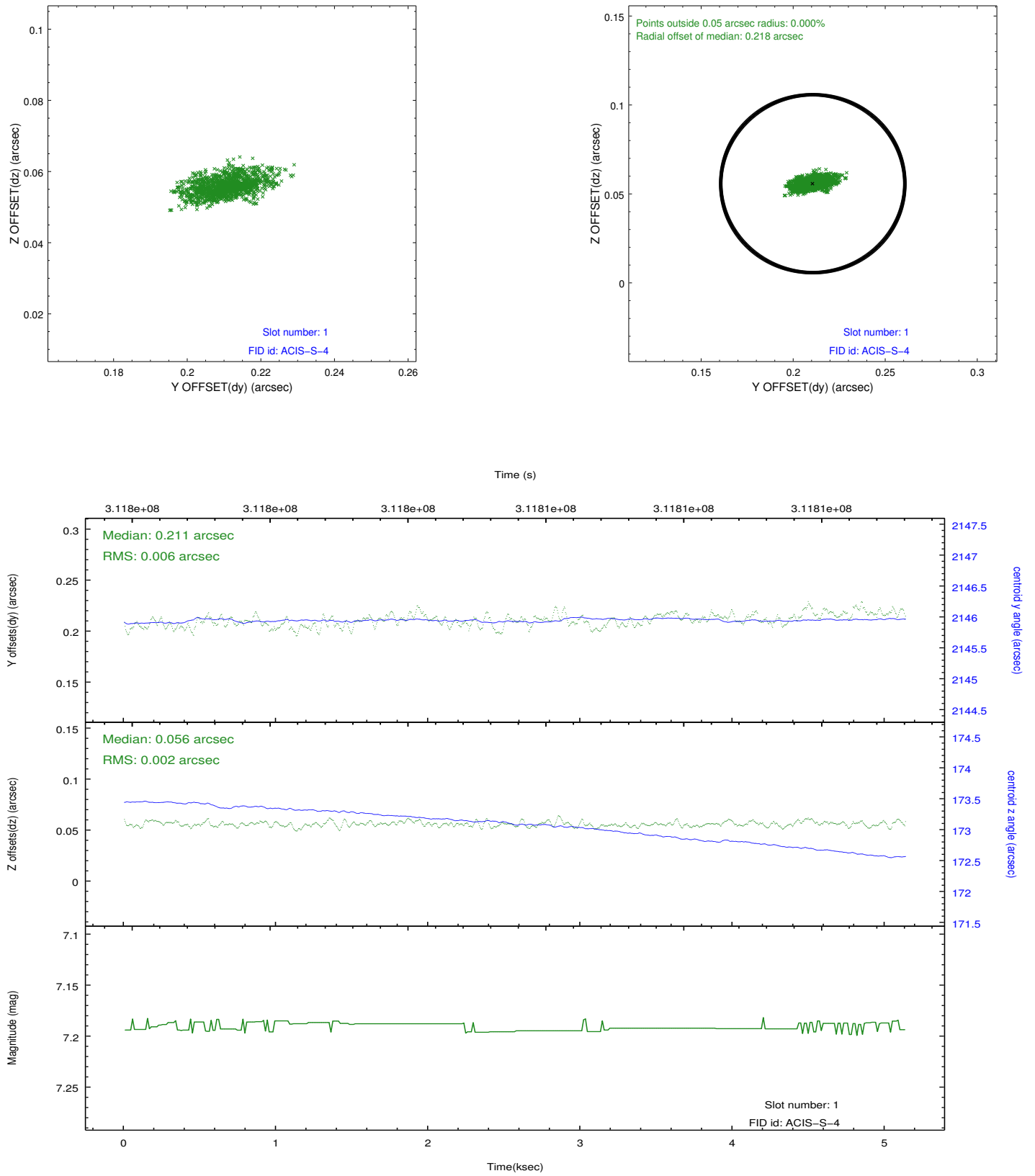


2.5 FID Slots

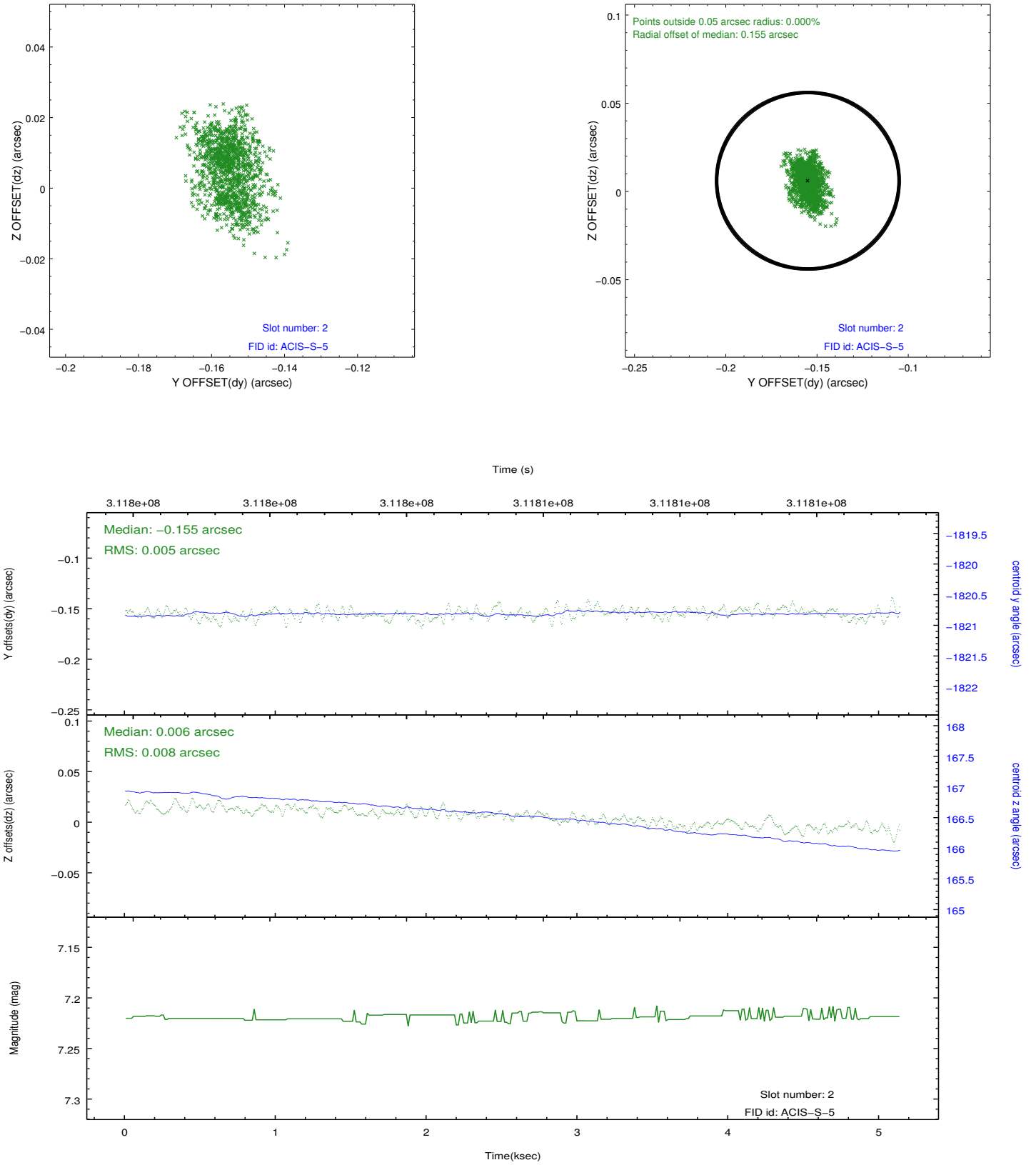
2.5.1 Slot 0



2.5.2 Slot 1



2.5.3 Slot 2



A Summary

A.1 Status

V&V Scientist	Jen Lauer
V&V Date (YYYY-MM-DD)	2012.05.07
V&V Edition	1
V&V Disposition and Status	OK
V&V Charge Time	5.12639998

A.2 Comments