

V&V Reference Report

L2 ASCDS Version : 7.6.10

Observation 744 - L2 Version 001
Chandra X-Ray Center

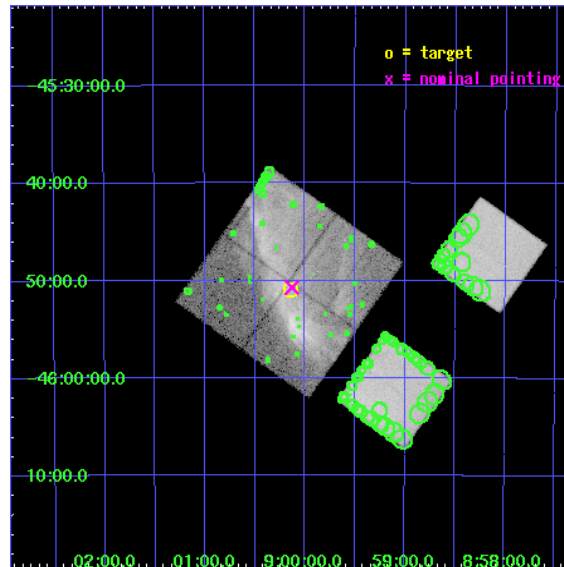
L2 Processing Date : Jun 8 2007

Contents

1	Front	2
2	OBI	3
2.1	OBI	3
2.1.1	Images	3
2.1.2	Bias	3
2.1.3	Parameters	4
2.1.4	Events	4
2.2	Compared Parameters	5
2.3	Aspect	6
2.4	Star Slots	9
2.4.1	Slot 3	9
2.4.2	Slot 4	10
2.4.3	Slot 5	11
2.4.4	Slot 6	12
2.4.5	Slot 7	13
2.5	FID Slots	14
2.5.1	Slot 0	14
2.5.2	Slot 1	15
2.5.3	Slot 2	16
3	Point Sources	17
A	Summary	18
A.1	Status	18
A.2	Comments	18

1 Front

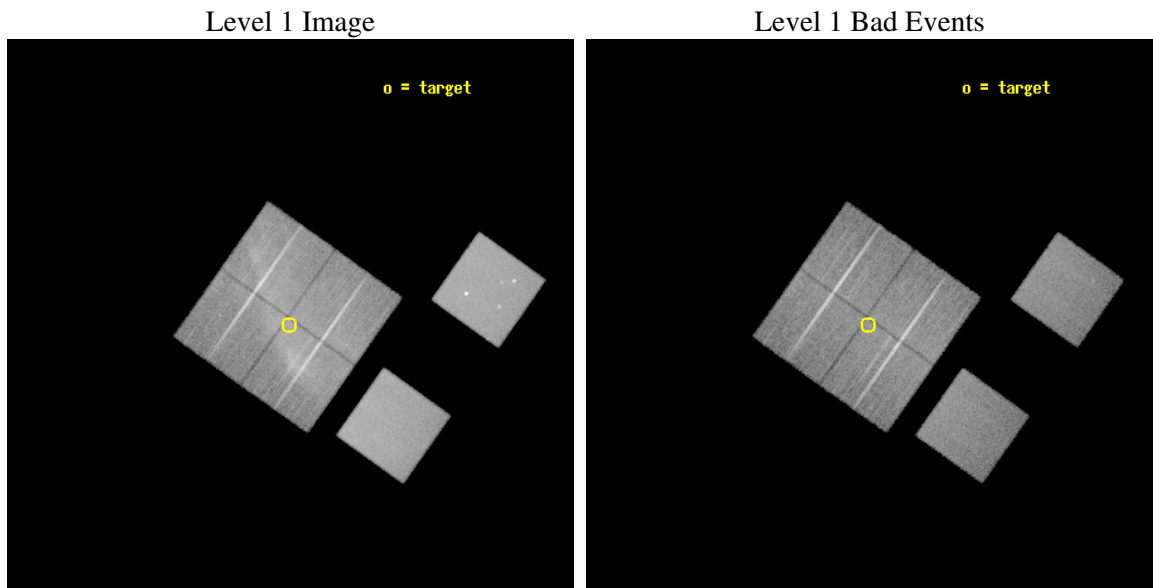
seq_num	500040
obs_id	744
title	POSSIBLE EXPLOSION FRAGMENTS IN THE VELA SUPERNOVA REMNANT
observer	Dr. Paul Plucinsky
object	VELA BULLET D
dtcycle	0
cycle	P
ra_targ	135.034
dec_targ	-45.85
ra_nom	135.03252748903
dec_nom	-45.845228087482
roll_nom	125.36306050957
revision	2
ontime	31052.80002892
livetime	30659.590777203
ontime0	31052.80002892
ontime1	31052.80002892
ontime2	31052.80002892
ontime3	31052.80002892
ontime5	31052.80002892
ontime7	31052.80002892
l2events	533723



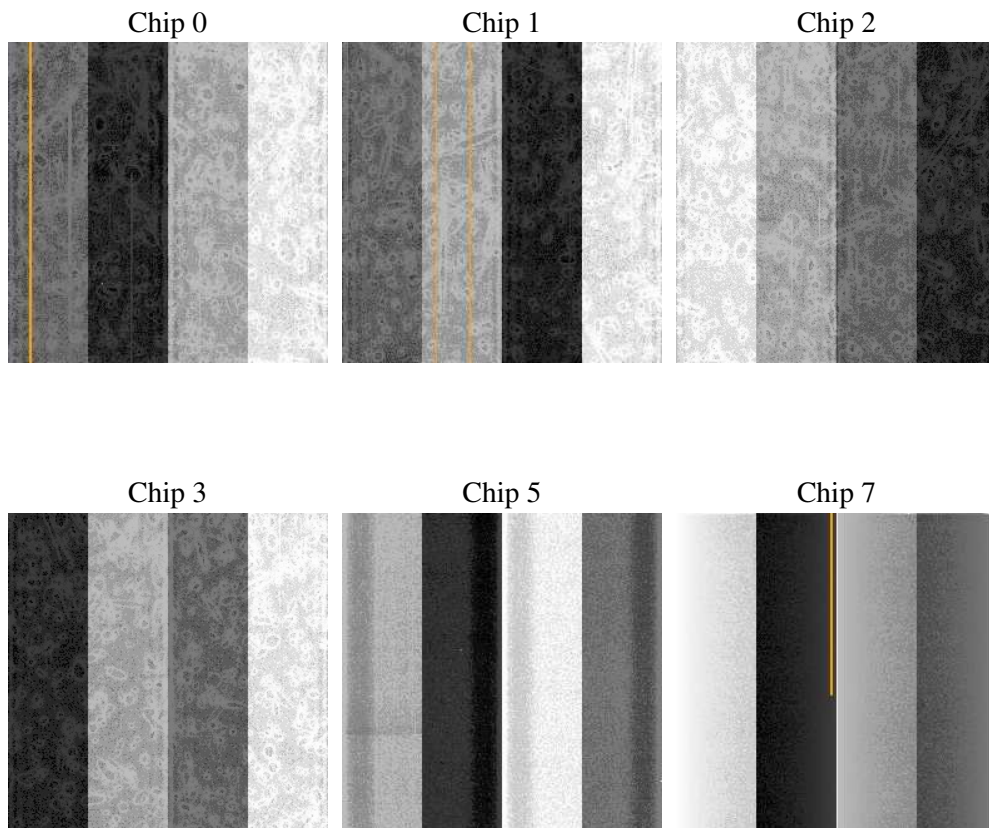
2 OBI

2.1 OBI

2.1.1 Images



2.1.2 Bias



2.1.3 Parameters

obi_num	0
ascdsver	7.6.10
caldsver	3.4.0
date	2007-06-08T11:21:29
revision	2

sched_exp_time	31300.000000
ontime	31052.80002892
ontime0	31052.80002892
ontime1	31052.80002892
ontime2	31052.80002892
ontime3	31052.80002892
ontime5	31052.80002892
ontime7	31052.80002892
l1events	1443911

2.1.4 Events

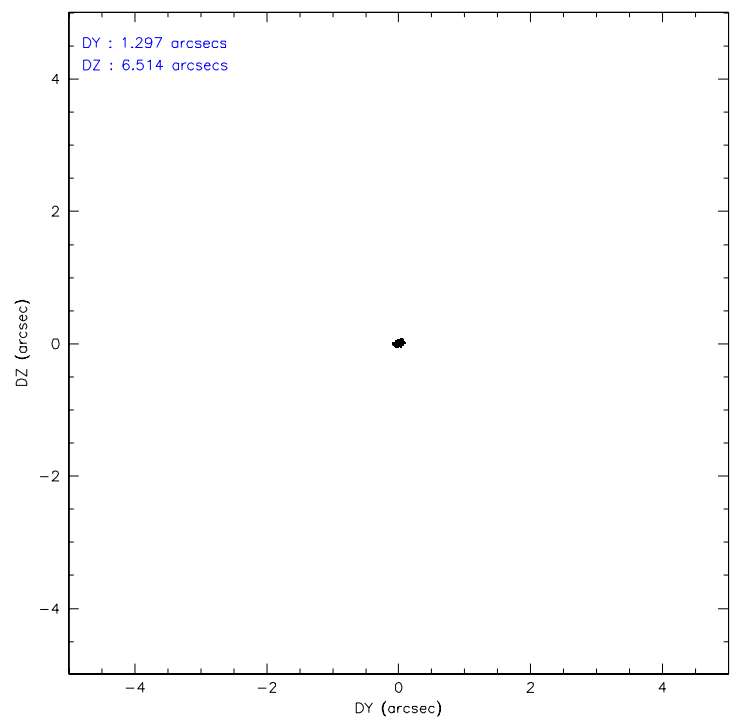
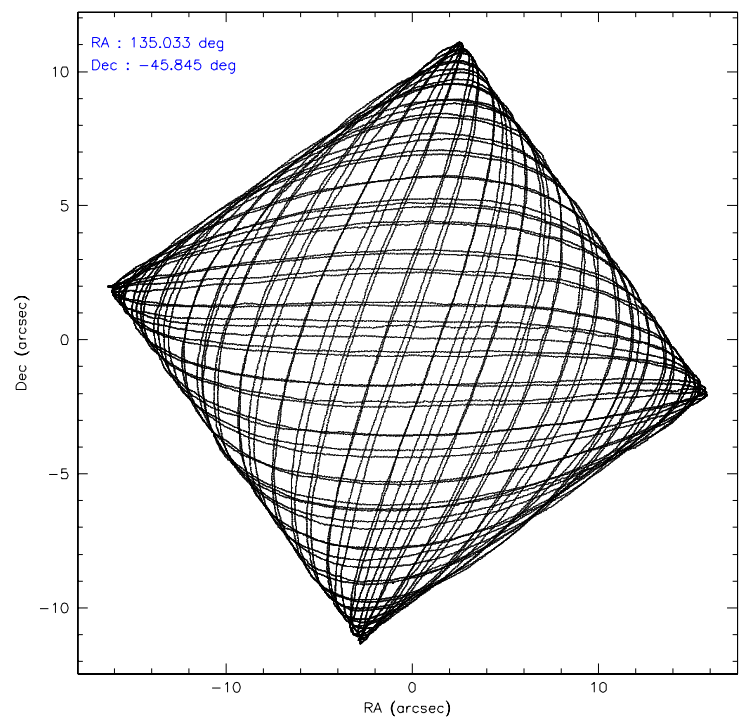
	ccd 0	ccd 1	ccd 2	ccd 3	ccd 5	ccd 7
level 1 events	237548	177809	212926	224375	299024	292229
rejected events	152684	144061	161160	155540	133667	130292
rejected %	64%	81%	75%	69%	44%	44%

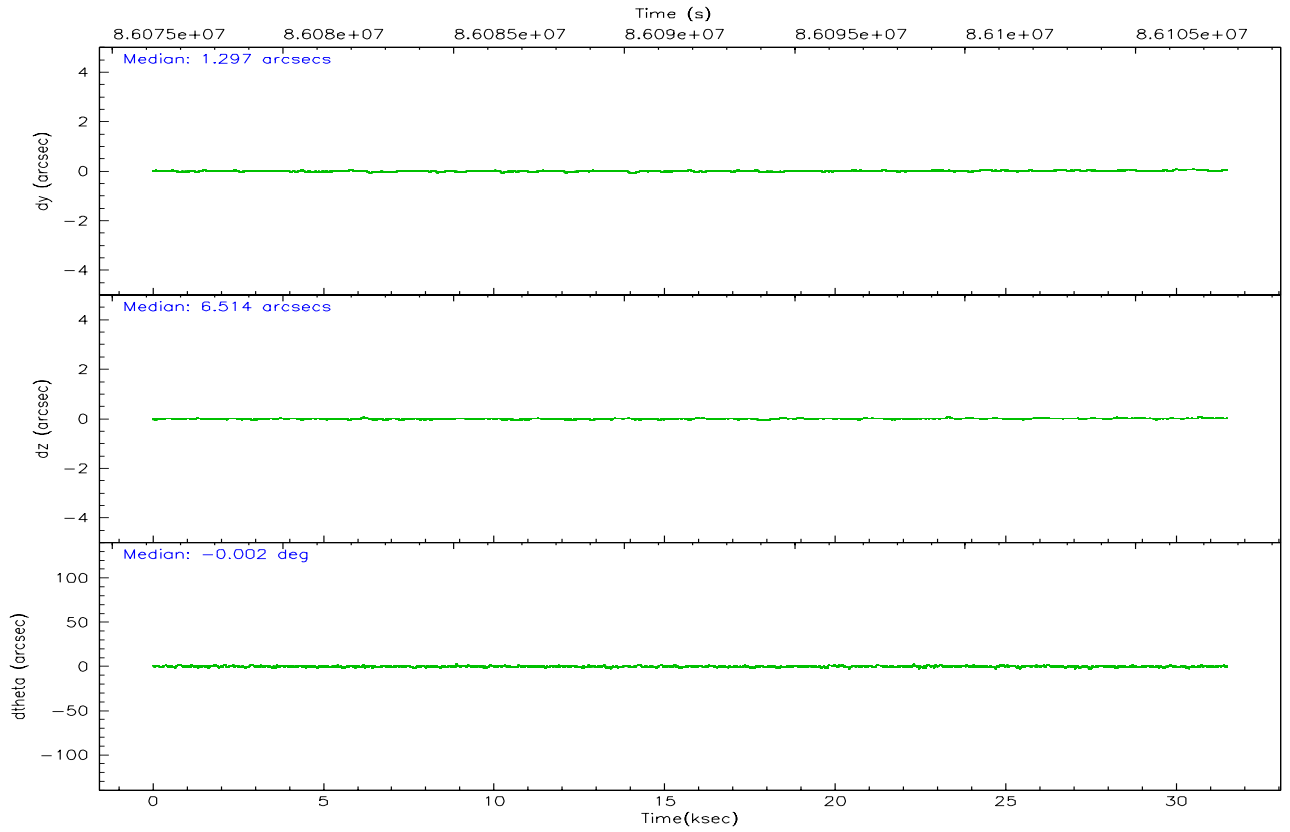
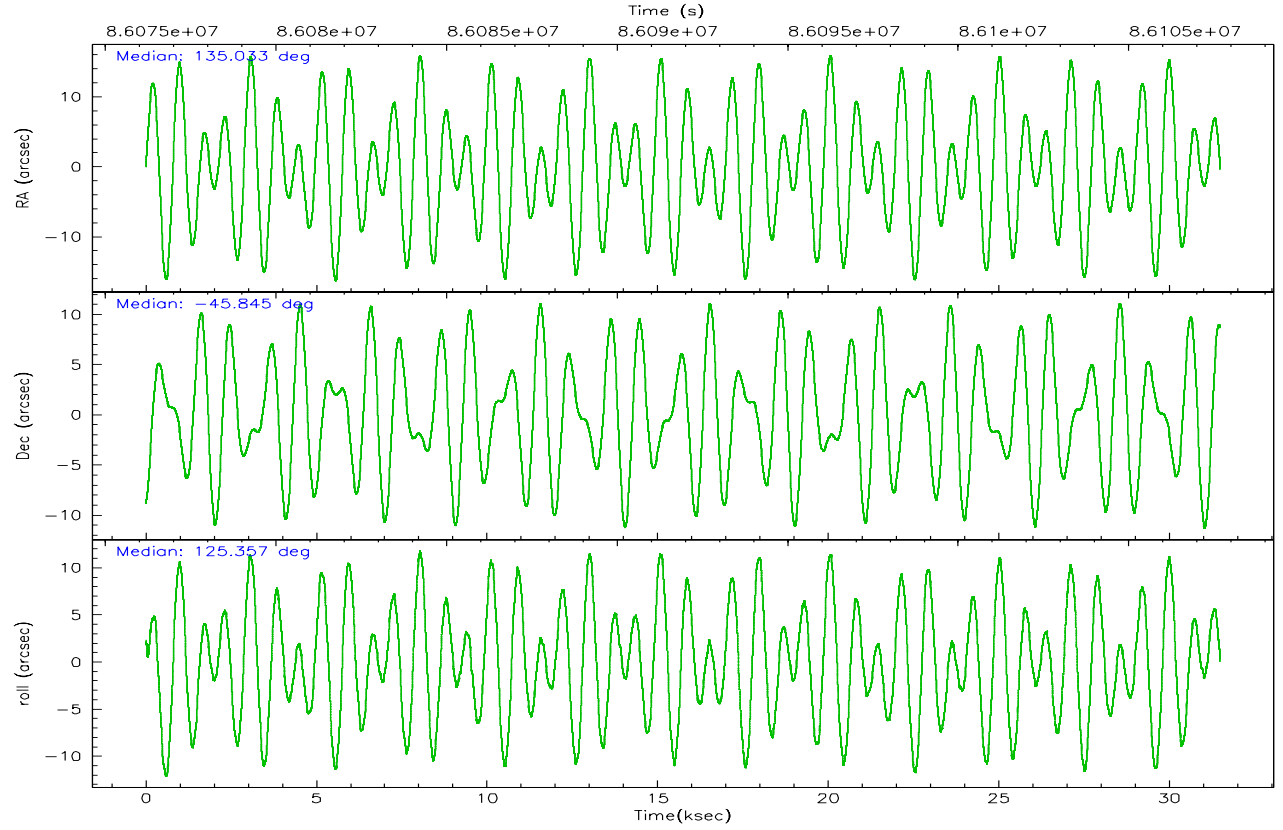
	ccd 0	ccd 1	ccd 2	ccd 3	ccd 5	ccd 7
grade 0 events	66988	20150	37484	53392	34903	33800
	28%	11%	17%	23%	11%	11%
grade 1 events	292	149	160	261	296	239
	0%	0%	0%	0%	0%	0%
grade 2 events	8248	5041	6178	6875	45551	34115
	3%	2%	2%	3%	15%	11%
grade 3 events	2906	2336	2277	2474	8998	15177
	1%	1%	1%	1%	3%	5%
grade 4 events	2878	2328	2256	2458	8631	15590
	1%	1%	1%	1%	2%	5%
grade 5 events	6533	6470	5926	6525	19174	21831
	2%	3%	2%	2%	6%	7%
grade 6 events	3853	3894	3574	3646	67298	63276
	1%	2%	1%	1%	22%	21%
grade 7 events	145850	137441	155071	148744	114173	108201
	61%	77%	72%	66%	38%	37%

2.2 Compared Parameters

Parameter	Planned	Actual	Parameter	Planned	Actual
Instrument	ACIS	ACIS	Obspar format version number	6	6
Detector	ACIS-012357	ACIS-012357	Obspar file type	PREDICTED	ACTUAL
Grating	NONE	NONE	Obspar update status	NONE	UPDATED
Data mode	FAINT	FAINT	Number of optional ACIS chips dropped	0	0
Observation mode	POINTING	POINTING	On-chip summing requested	N	N
Pointing RA	135.068379	135.0325274890288	Subarray requested	NONE	NONE
Pointing Dec	-45.856778	-45.84522808748246	Alternating exposures requested	N	N
Pointing Roll	125.180101	125.3630605095702	Primary exposure time	3.200000	3.2
SIM focus pos (mm)	-0.782348	-0.7809083437167272			
SIM defocus (mm)	0	0.001439871863259334			
SIM translation stage pos (mm)	-233.592463	-233.5874344608287			
SIM translation stage offset (mm)	0	-0.005018542100998502			
Observation start time	86076376.184000	86076000.011344			
Observation start date	2000-09-23T06:05:12	2000-09-23T06:00:00			
Observation end time	86107676.184000	86108205.000057			
Observation end date	2000-09-23T14:46:52	2000-09-23T14:56:45			
Read mode	TIMED	TIMED			

2.3 Aspect



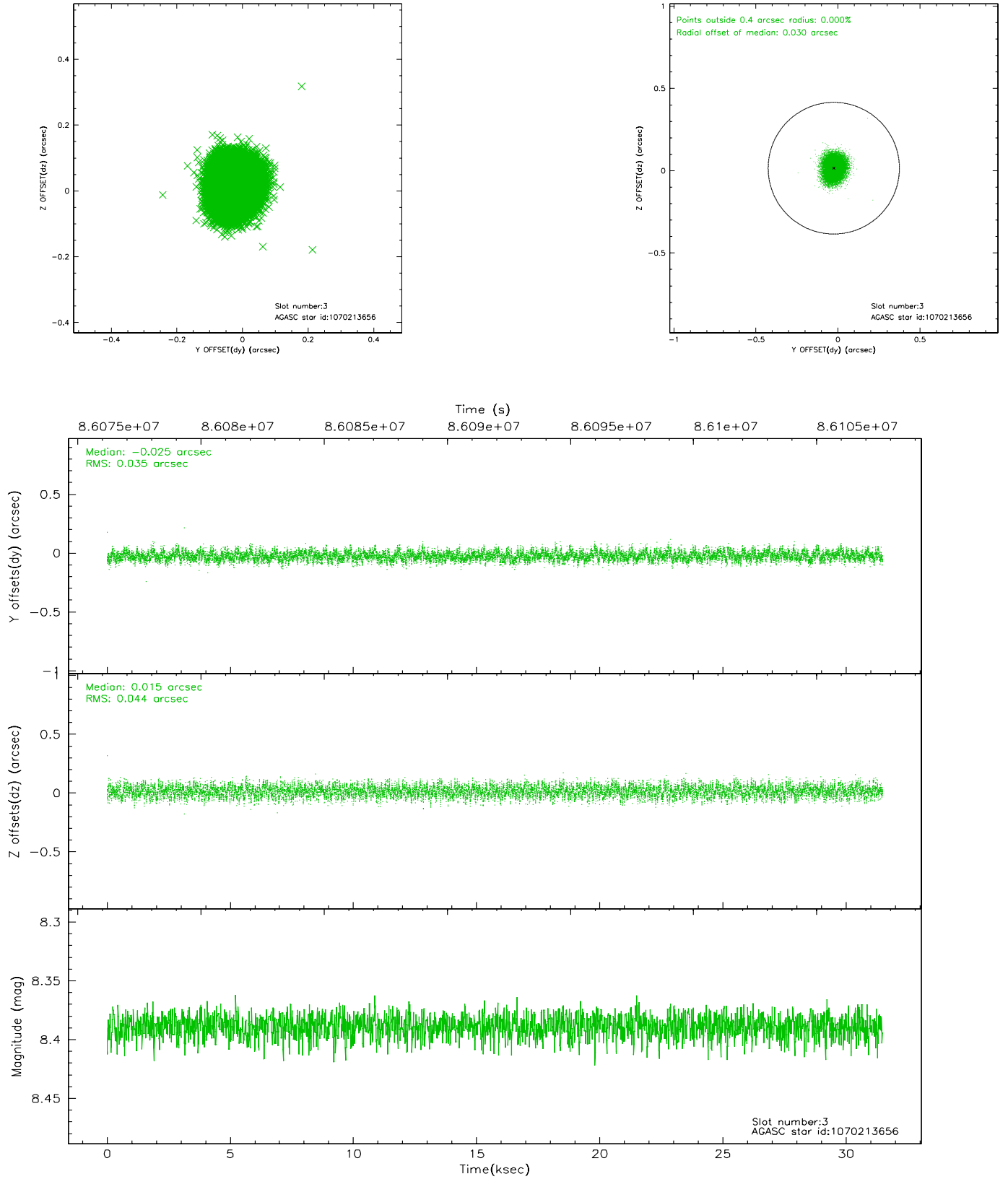


Slot Statistics

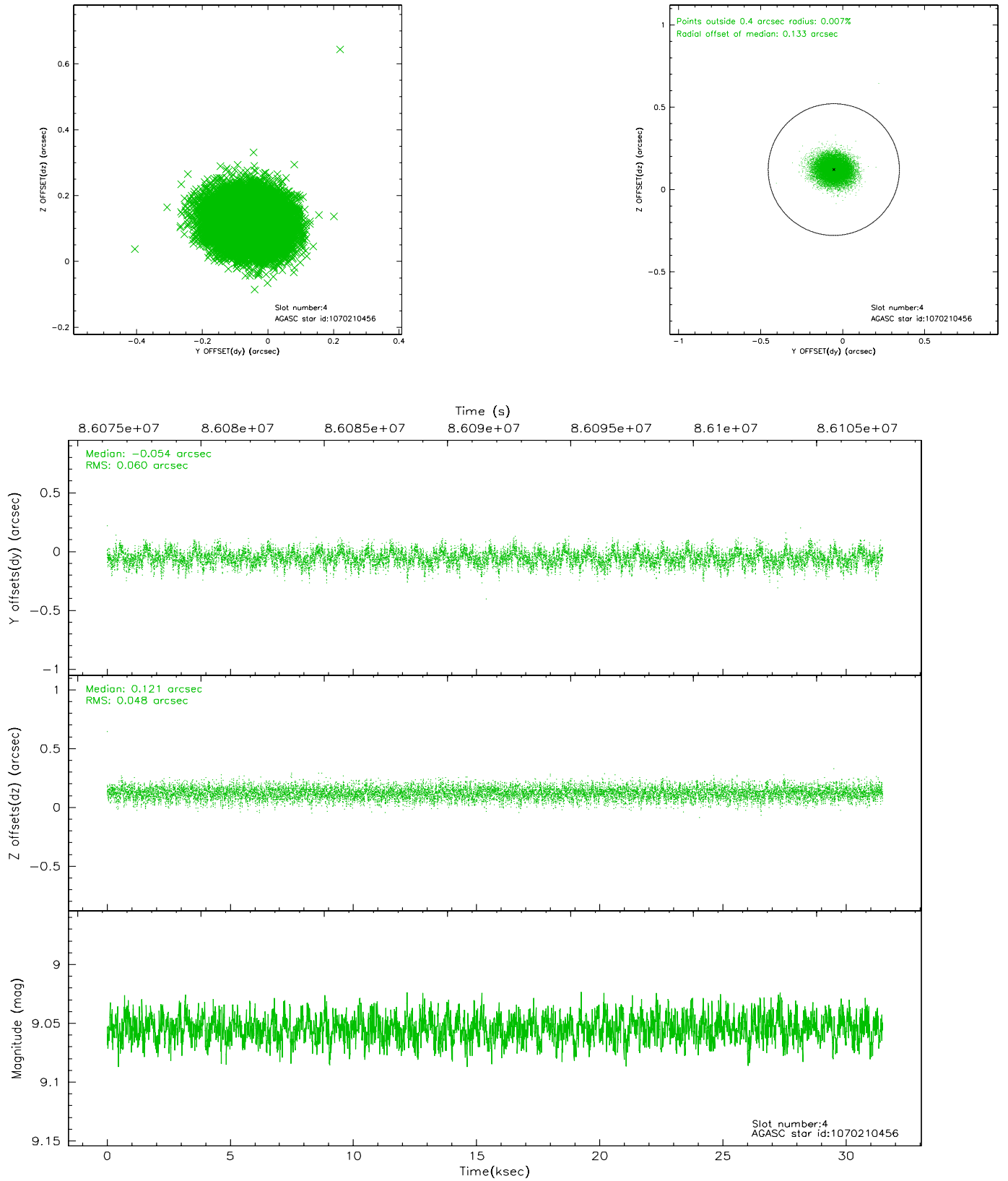
slot	status	id	mag	n_pts	med_dy	med_dz	dr1	dr2	ra	dec	mean_y	mean_z
0	FID	ACIS-I-2	7.15	7681	-0.026	-0.049	0.012	0.020	0.000000	0.000000	-755.66	-836.31
1	FID	ACIS-I-4	7.18	7680	-0.097	0.037	0.010	0.017	0.000000	0.000000	2158.30	1069.92
2	FID	ACIS-I-5	7.22	7681	0.022	0.081	0.017	0.027	0.000000	0.000000	-1809.36	1067.88
3	GUIDE	1070213656	8.39	15359	-0.025	0.015	0.061	0.096	135.946131	-46.028158	-1777.57	-1430.28
4	GUIDE	1070210456	9.05	15356	-0.054	0.121	0.082	0.132	135.144108	-45.194483	1838.54	-1529.79
5	GUIDE	1068502936	9.45	15352	-0.006	-0.112	0.079	0.130	134.895208	-45.748910	568.22	132.64
6	GUIDE	1068499920	9.51	15357	-0.012	-0.057	0.092	0.149	134.965836	-46.459902	-1627.96	1459.40
7	GUIDE	1068499224	9.03	15356	0.095	0.033	0.083	0.134	133.849709	-45.670998	2294.10	2134.91

2.4 Star Slots

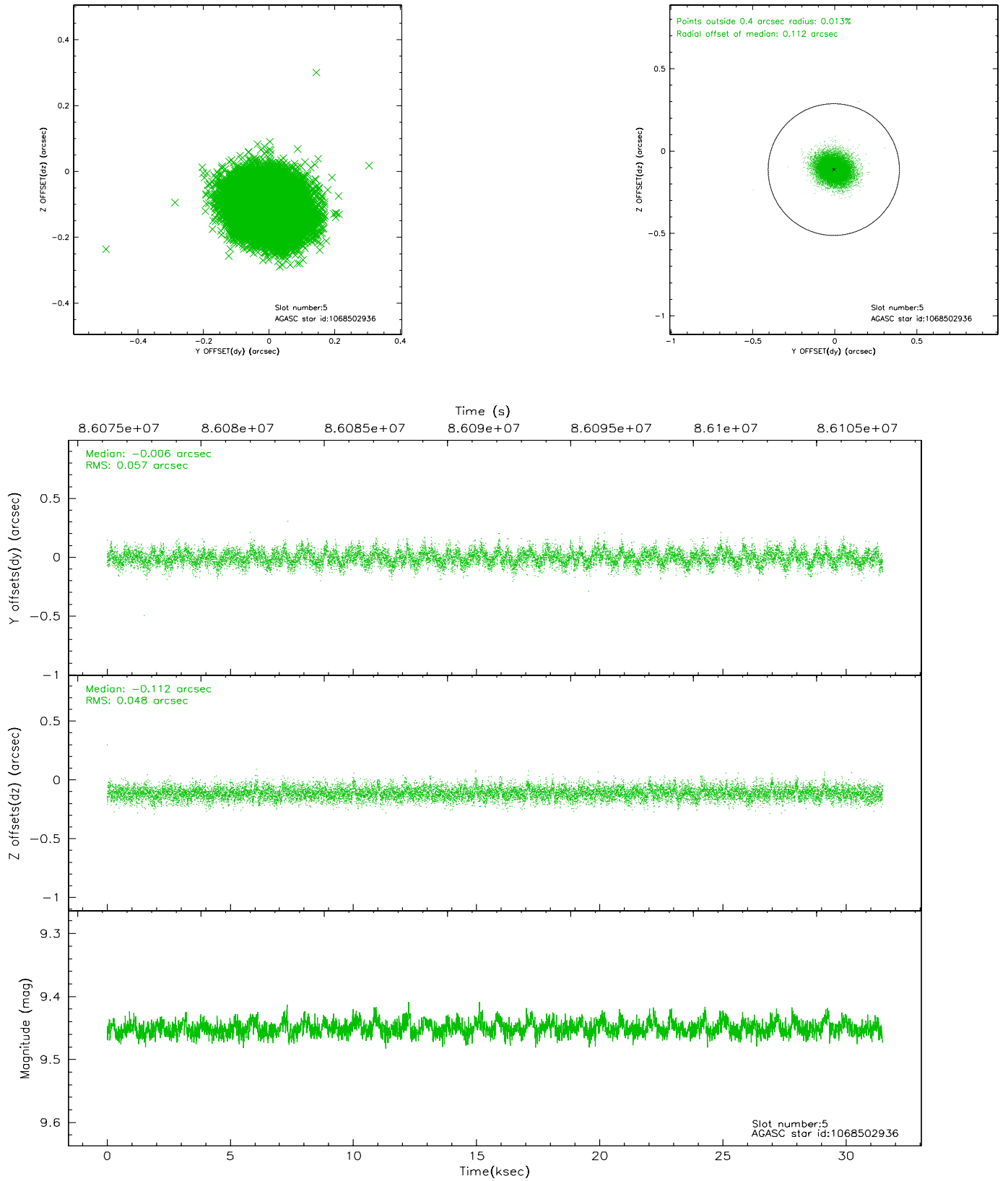
2.4.1 Slot 3



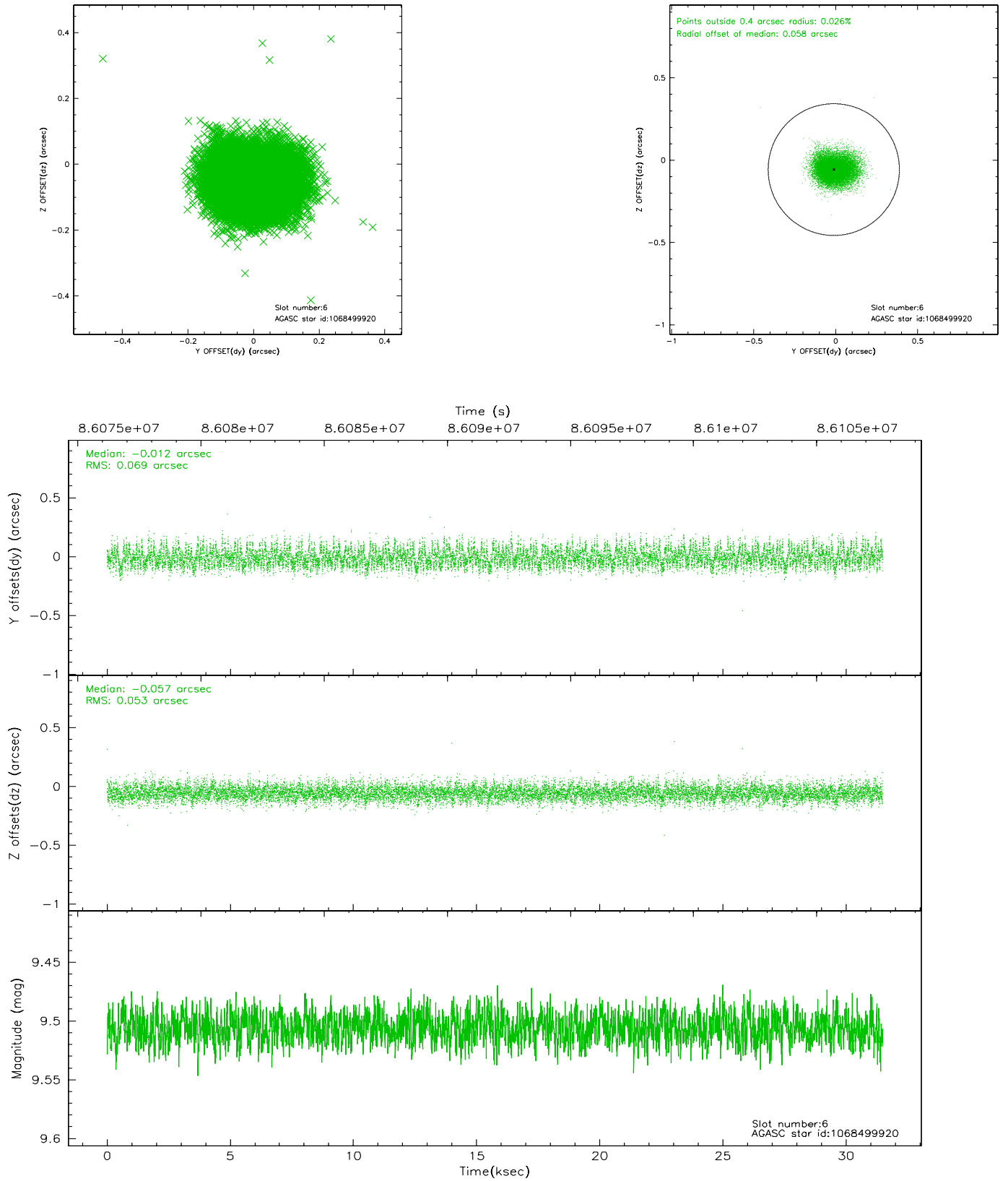
2.4.2 Slot 4



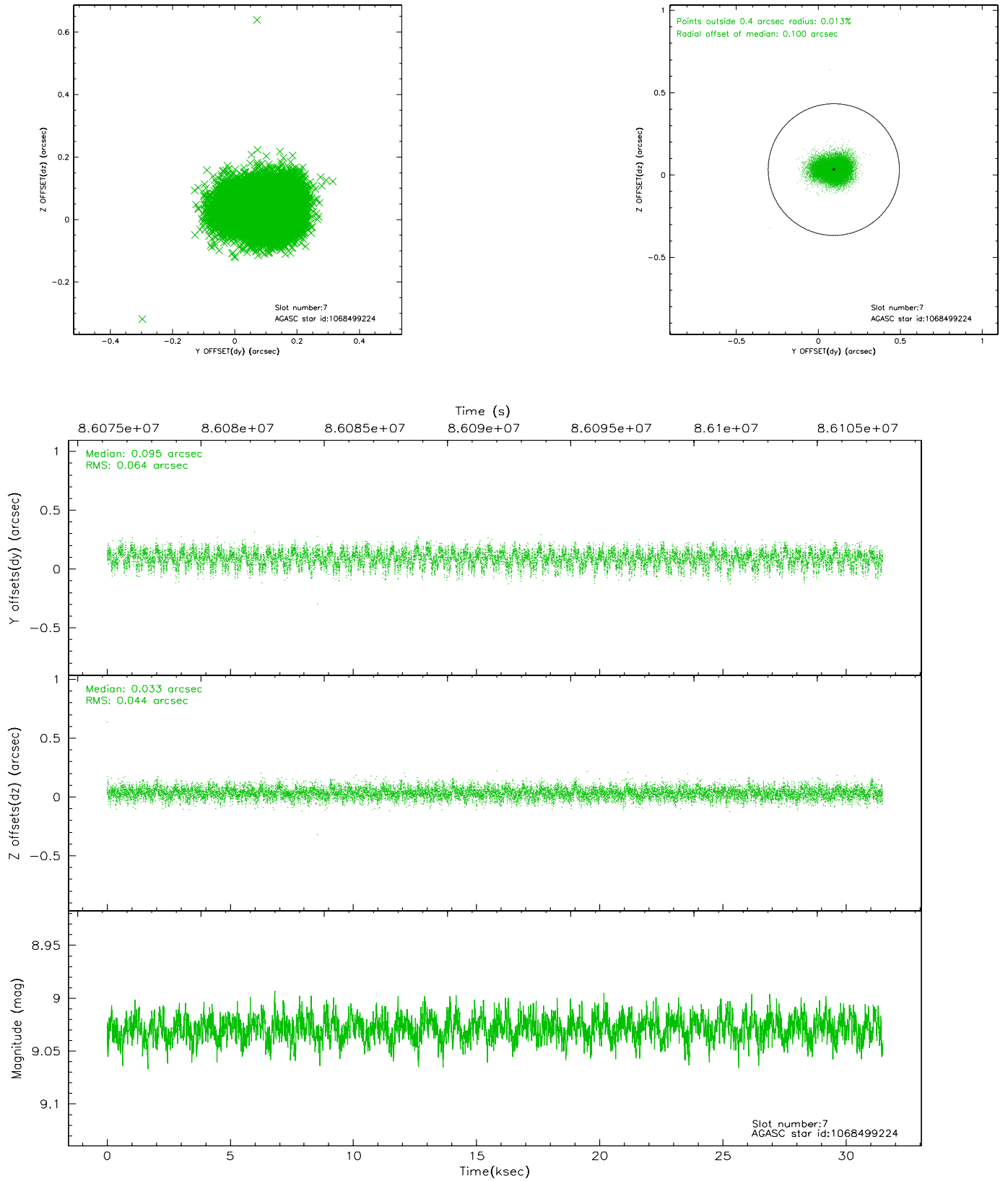
2.4.3 Slot 5



2.4.4 Slot 6

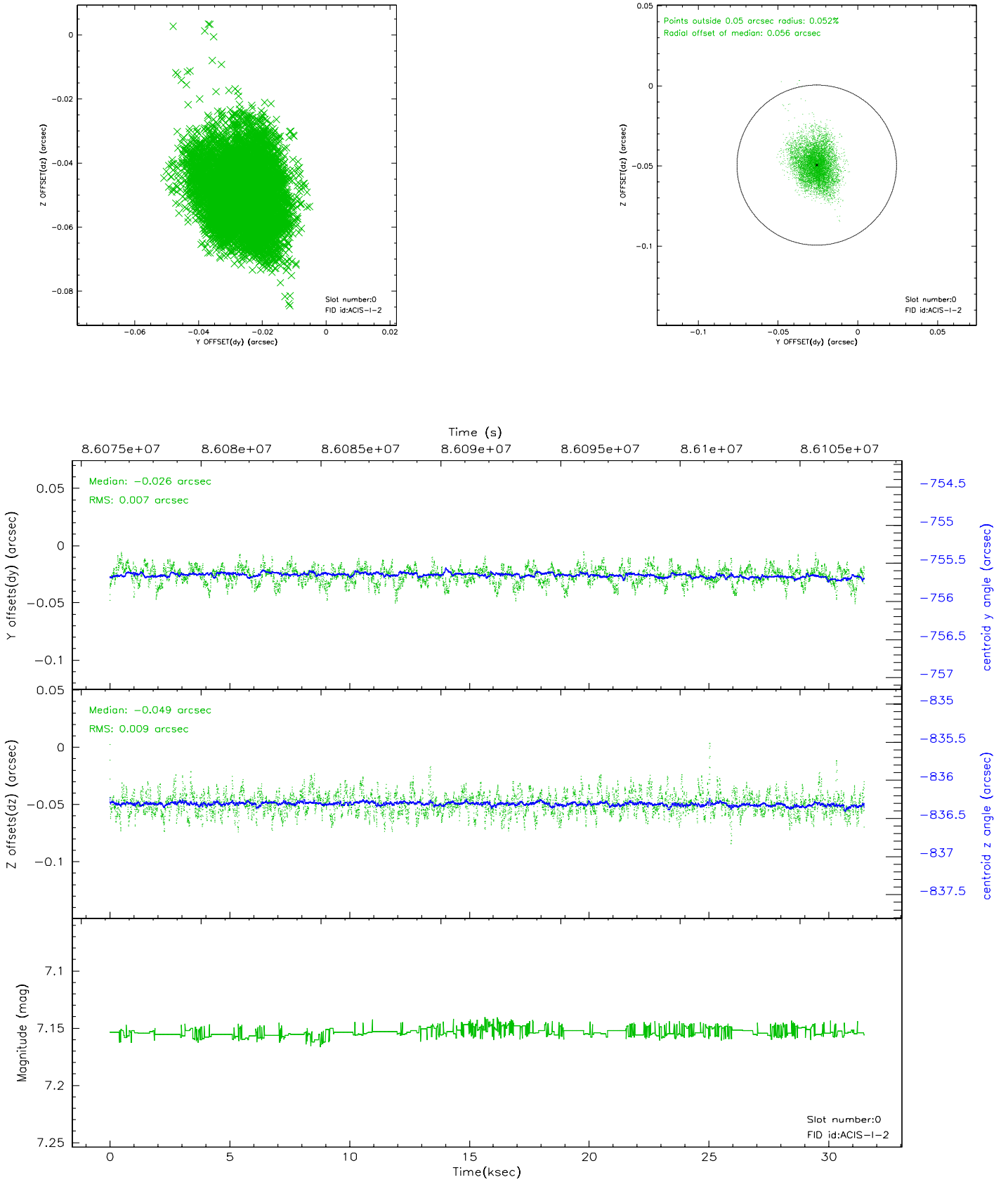


2.4.5 Slot 7

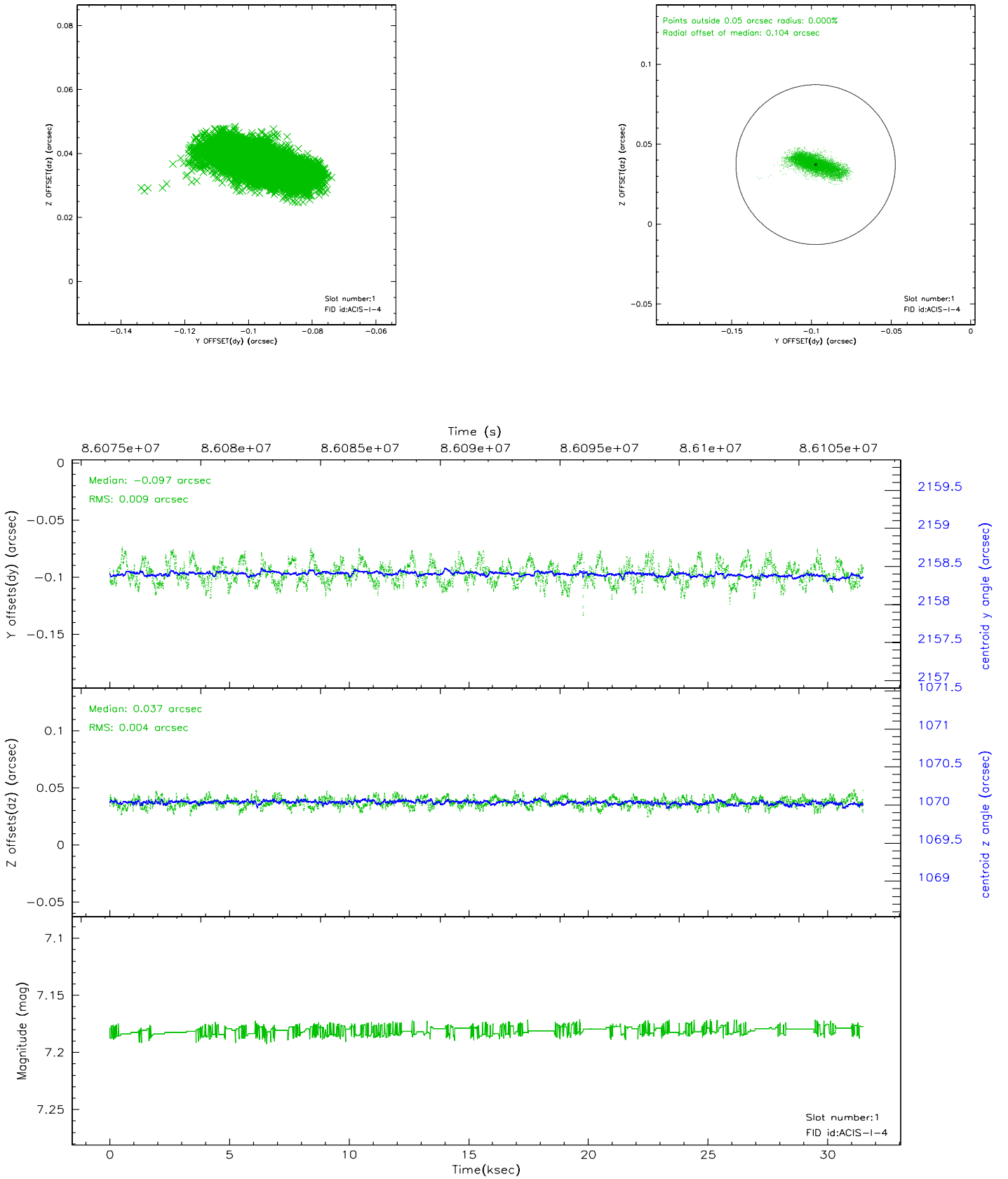


2.5 FID Slots

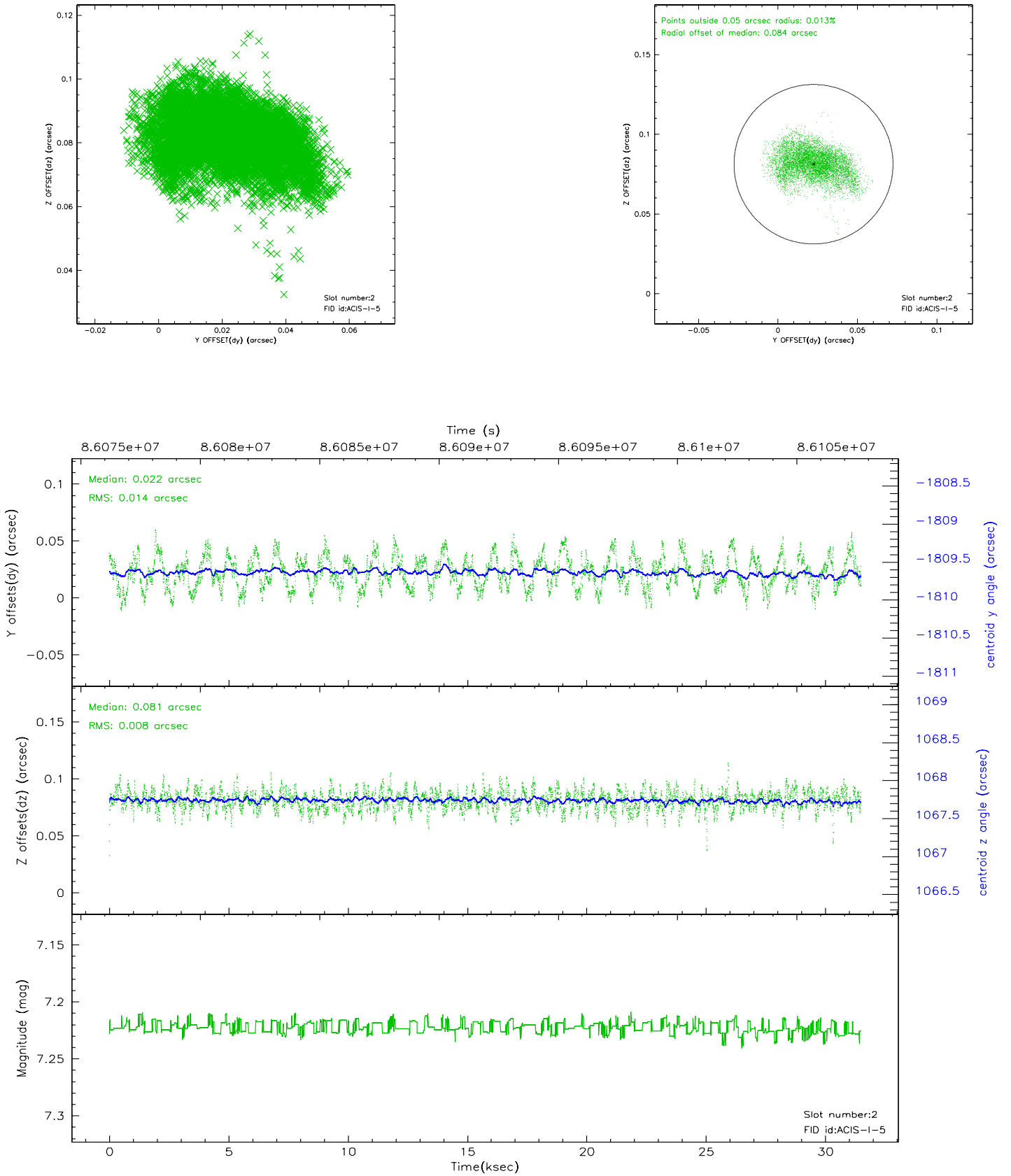
2.5.1 Slot 0



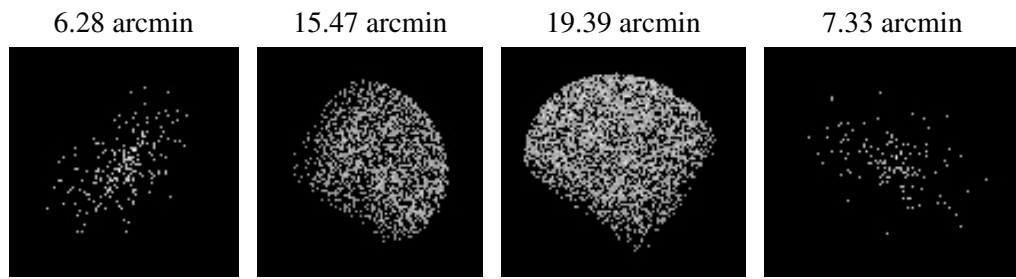
2.5.2 Slot 1



2.5.3 Slot 2



3 Point Sources



A Summary

A.1 Status

V&V Scientist	Jen Lauer
V&V Date (YYYY-MM-DD)	2007.06.08
V&V Edition	1
V&V Disposition and Status	OK
V&V Charge Time	31.052

A.2 Comments