

V&V Reference Report

L2 ASCDS Version : 8.4.3.1

Observation 7344 - L2 Version 2
Chandra X-Ray Center

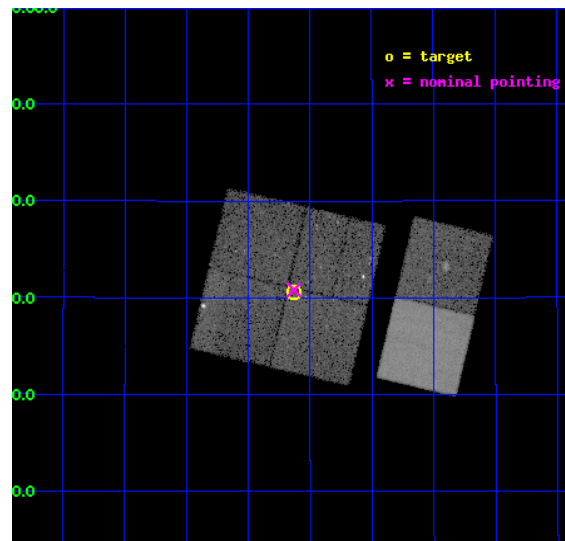
L2 Processing Date : Apr 4 2012

Contents

1	Front	2
2	OBI	3
2.1	OBI	3
2.1.1	Images	3
2.1.2	Bias	3
2.1.3	Parameters	4
2.1.4	Events	4
2.2	Compared Parameters	5
2.3	Aspect	6
2.4	Star Slots	9
2.4.1	Slot 3	9
2.4.2	Slot 4	10
2.4.3	Slot 5	11
2.4.4	Slot 6	12
2.4.5	Slot 7	13
2.5	FID Slots	14
2.5.1	Slot 0	14
2.5.2	Slot 1	15
2.5.3	Slot 2	16
A	Summary	17
A.1	Status	17
A.2	Comments	17

1 Front

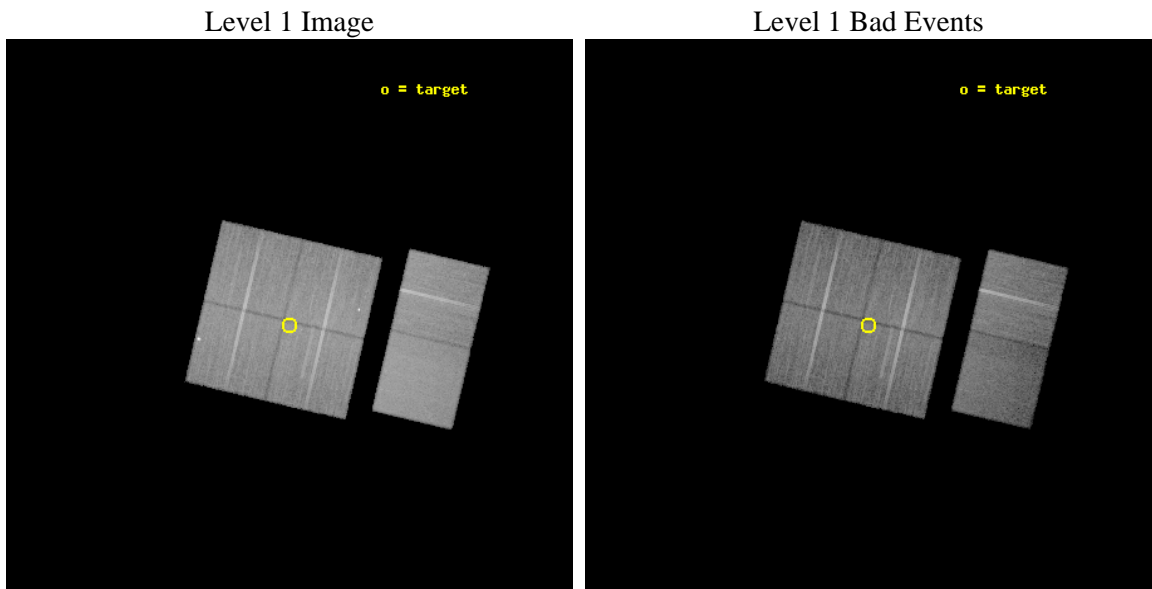
seq_num	600489	Sequence number
obs_id	7344	Observation id
title	The Chandra ACIS Survey of M33 (ChASem33): A Deep Survey of the Nearest Face-on Spiral Galaxy	Proposal title
observer	Dr Manami Sasaki	Principal investigator
object	M33 Field 6	Source name
dtcycle	0	
cycle	P	events from which exps? Prim/Second/Both
ra_targ	23.532083	Observer's specified target RA [deg]
dec_targ	30.509111	Observer's specified target Dec [deg]
ra_nom	23.532995004673	Nominal RA [deg]
dec_nom	30.513724881919	Nominal Dec [deg]
roll_nom	103.20820588085	Nominal Roll [deg]
revision	2	Processing version of data
ontime	21724.717978418	Sum of GTIs [s]
livetime	21449.62651832	Livetime [s]
ontime0	21724.718058139	Sum of GTIs [s]
ontime1	21731.199919045	Sum of GTIs [s]
ontime2	21727.958928853	Sum of GTIs [s]
ontime3	21724.717978418	Sum of GTIs [s]
ontime6	21724.718078077	Sum of GTIs [s]
ontime7	21731.199919045	Sum of GTIs [s]
l2events	156322	Number of level 2 events



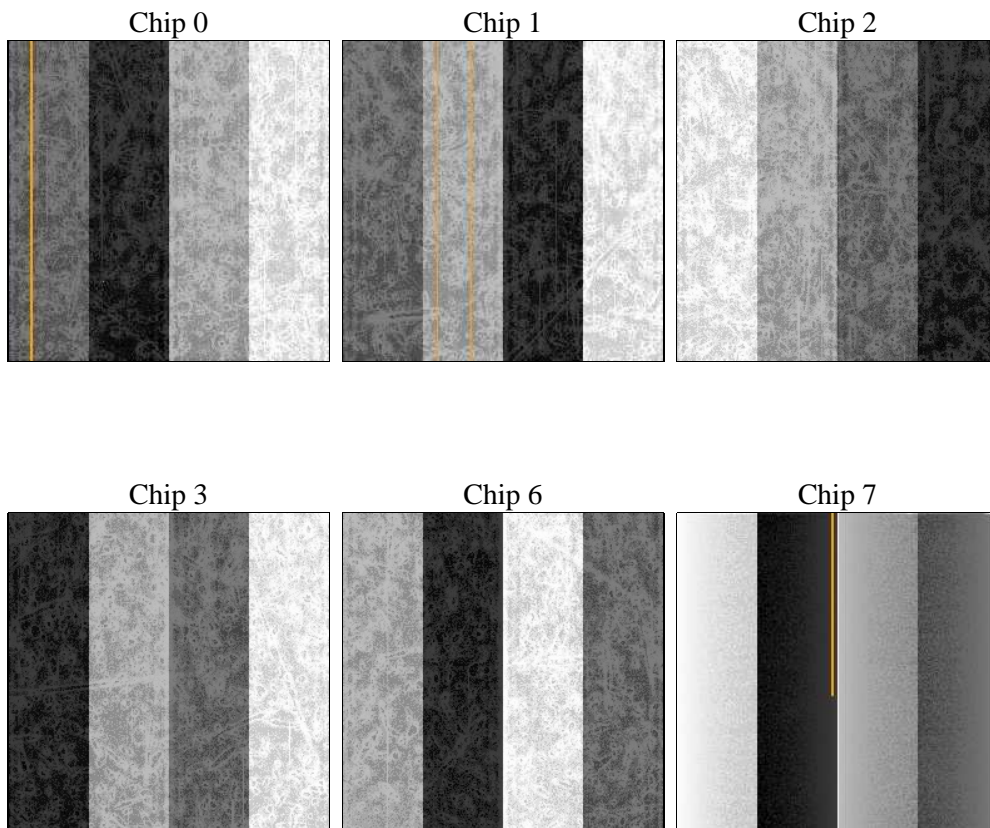
2 OBI

2.1 OBI

2.1.1 Images



2.1.2 Bias



2.1.3 Parameters

obi_num	1	Obi number	sched_exp_time	21603.000000	[s] Scheduled observation exposure time
ascdsver	8.4.3.1	Processing system revision	ontime	21724.717978418	Sum of GTIs [s]
caldsver	4.4.9	 	ontime0	21724.718058139	Sum of GTIs [s]
date	2012-04-04T19:56:36	Date and time of file creation	ontime1	21731.199919045	Sum of GTIs [s]
revision	2	Processing version of data	ontime2	21727.958928853	Sum of GTIs [s]
			ontime3	21724.717978418	Sum of GTIs [s]
			ontime6	21724.718078077	Sum of GTIs [s]
			ontime7	21731.199919045	Sum of GTIs [s]
			l1events	1027883	Number of level 1 events

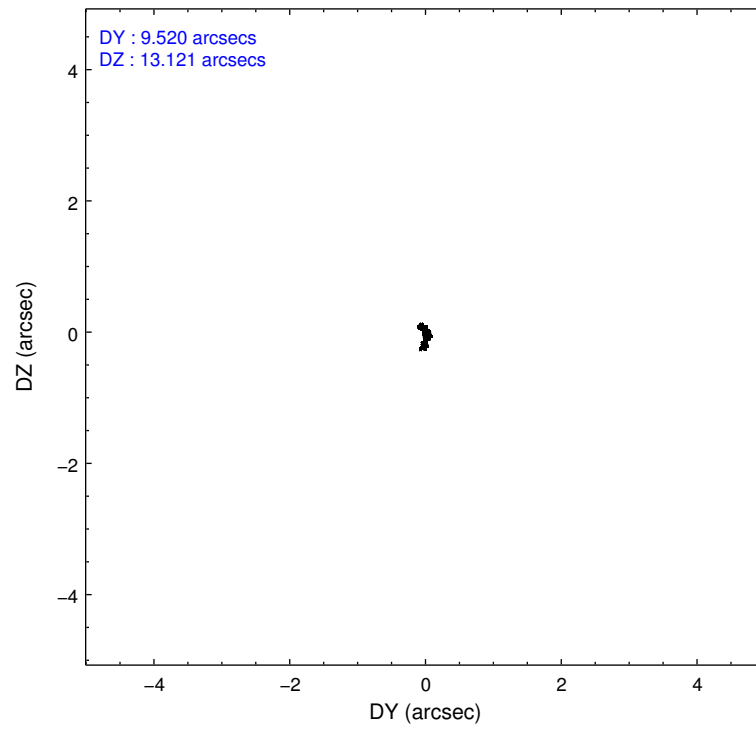
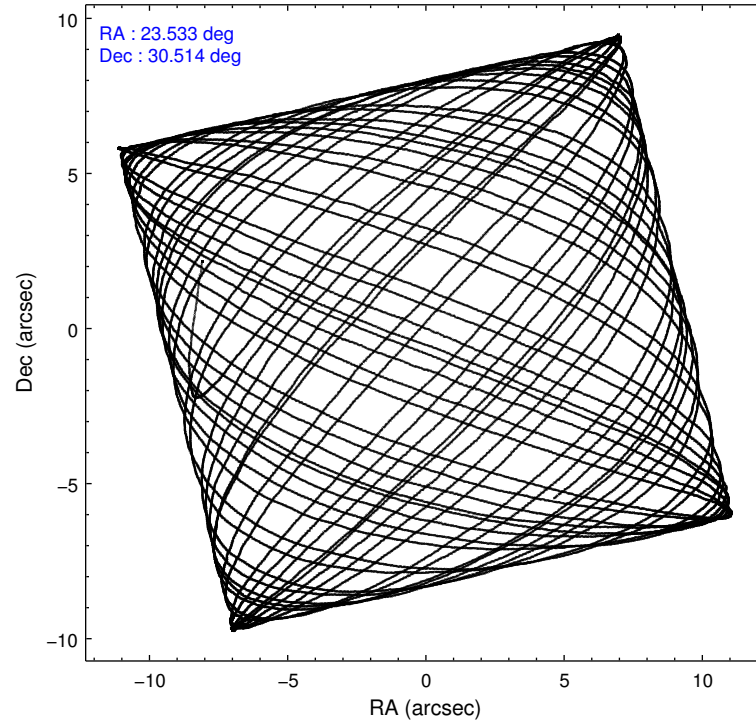
2.1.4 Events

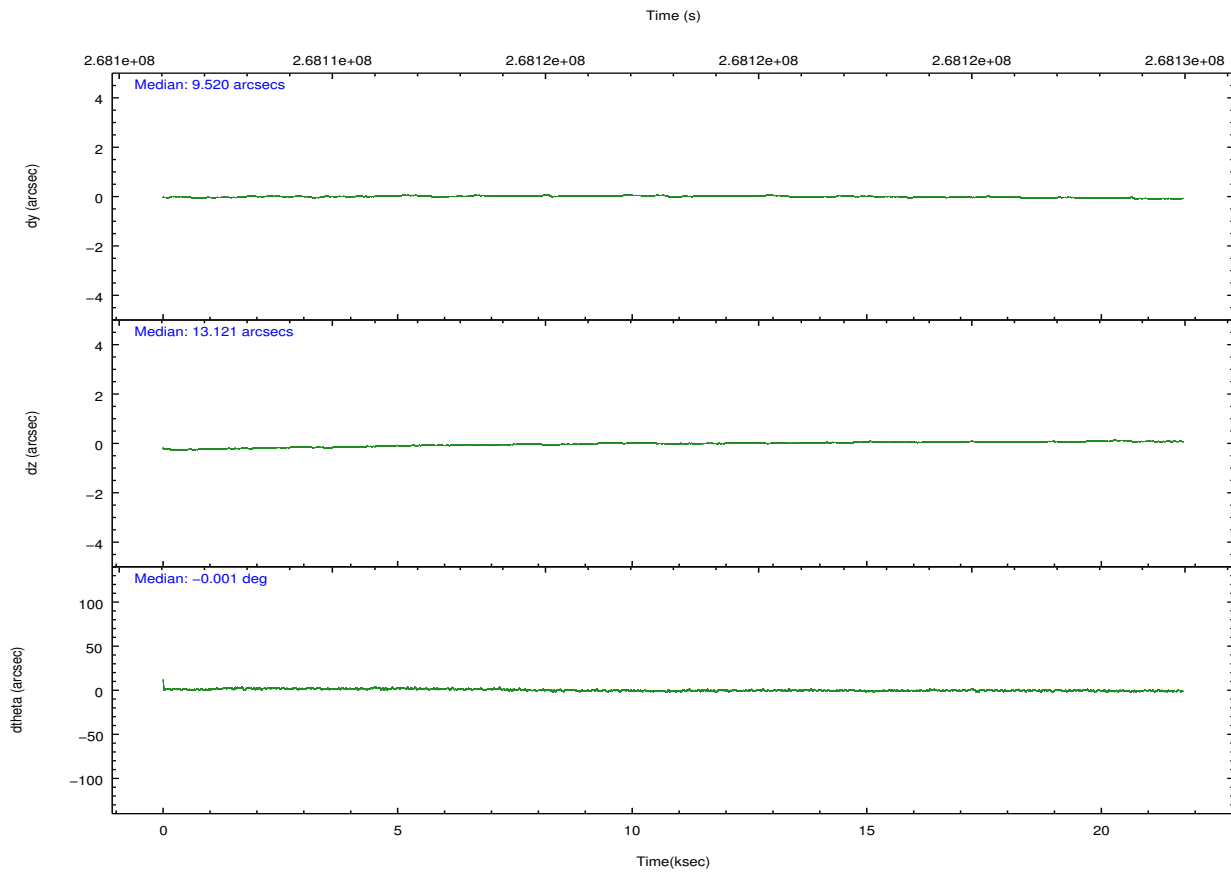
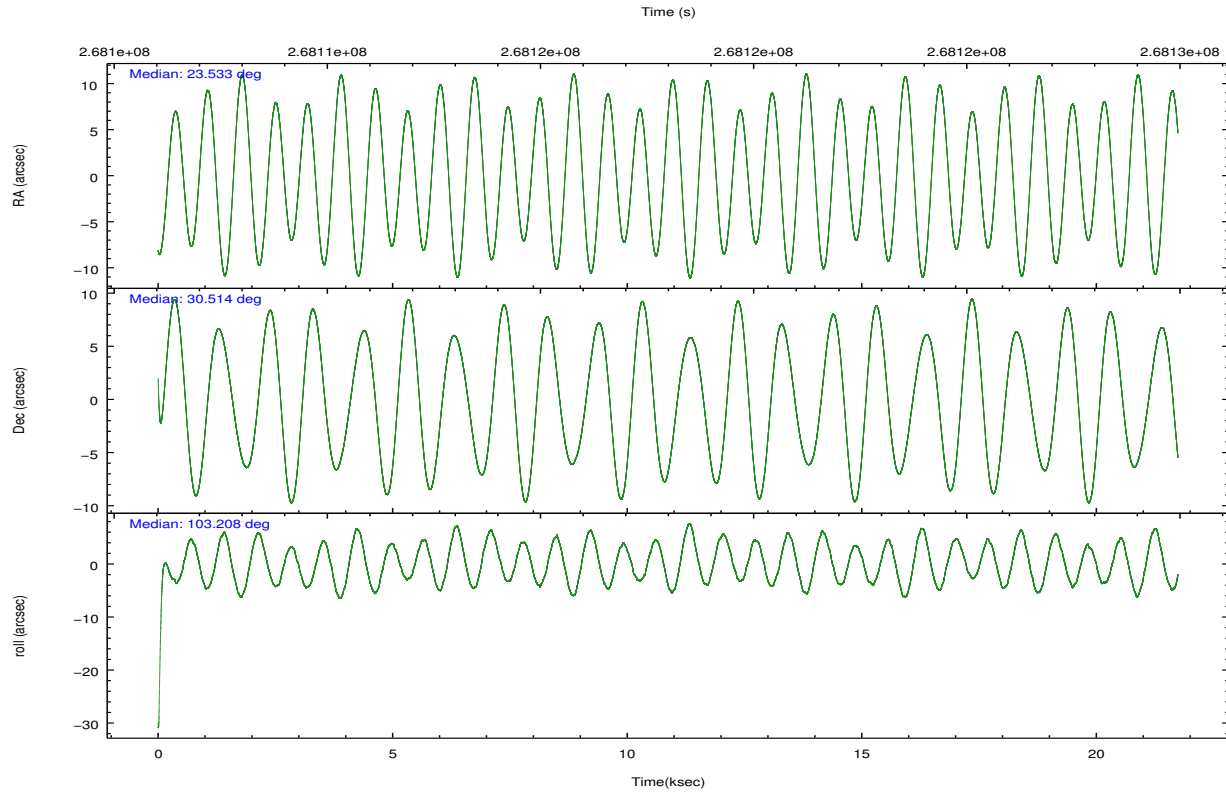
	ccd 0	ccd 1	ccd 2	ccd 3	ccd 6	ccd 7		ccd 0	ccd 1	ccd 2	ccd 3	ccd 6	ccd 7
level 1 events	160412	161522	180909	165215	174205	185620	grade 0 events	6003	9524	8747	6394	6213	6913
rejected events	143869	139923	161514	148911	156704	103277		3%	5%	4%	3%	3%	3%
rejected %	89%	86%	89%	90%	89%	55%	grade 1 events	87	102	113	90	85	155
								0%	0%	0%	0%	0%	0%
							grade 2 events	4067	4460	4163	3391	3952	16914
								2%	2%	2%	2%	2%	9%
							grade 3 events	1897	2121	1871	1756	1914	7796
								1%	1%	1%	1%	1%	4%
							grade 4 events	1751	2140	1877	1821	1916	7831
								1%	1%	1%	1%	1%	4%
							grade 5 events	5595	6501	5424	6670	6808	19776
								3%	4%	2%	4%	3%	10%
							grade 6 events	3094	3739	3088	3226	3783	44291
								1%	2%	1%	1%	2%	23%
							grade 7 events	137918	132935	155626	141867	149534	81944
								85%	82%	86%	85%	85%	44%

2.2 Compared Parameters

Parameter	Planned	Actual	Parameter	Planned	Actual
Instrument	ACIS	ACIS	Obspar format version number	7	7
Detector	ACIS-012367	ACIS-012367	Obspar file type	PREDICTED	ACTUAL
Grating	NONE	NONE	Obspar update status	NONE	UPDATED
Data mode	VFAINT	VFAINT	Number of optional ACIS chips dropped	0	0
Observation mode	POINTING	POINTING	On-chip summing requested	N	N
[deg] Pointing RA	23.554842	23.532995004673	Subarray requested	NONE	NONE
[deg] Pointing Dec	30.493792	30.51372488191861	Alternating exposures requested	N	N
[deg] Pointing Roll	102.988444	103.2082058808533	[s] Primary exposure time	0.000000	3.2
[mm] SIM focus pos	-0.782348	-0.7809083437167272			
[mm] SIM defocus	0	0.001439871863259334			
[mm] SIM translation stage pos	-233.592463	-233.5874344608287			
[mm] SIM translation stage offset	0	-0.005018542100998502			
[s] Observation start time (MET)	268107256.184000	268106020.18187			
Observation start date	2006-07-01T02:13:11	2006-07-01T01:53:40			
[s] Observation end time (MET)	268128859.184000	268129886.28299			
Observation end date	2006-07-01T08:13:14	2006-07-01T08:31:26			
Read mode	TIMED	TIMED			

2.3 Aspect



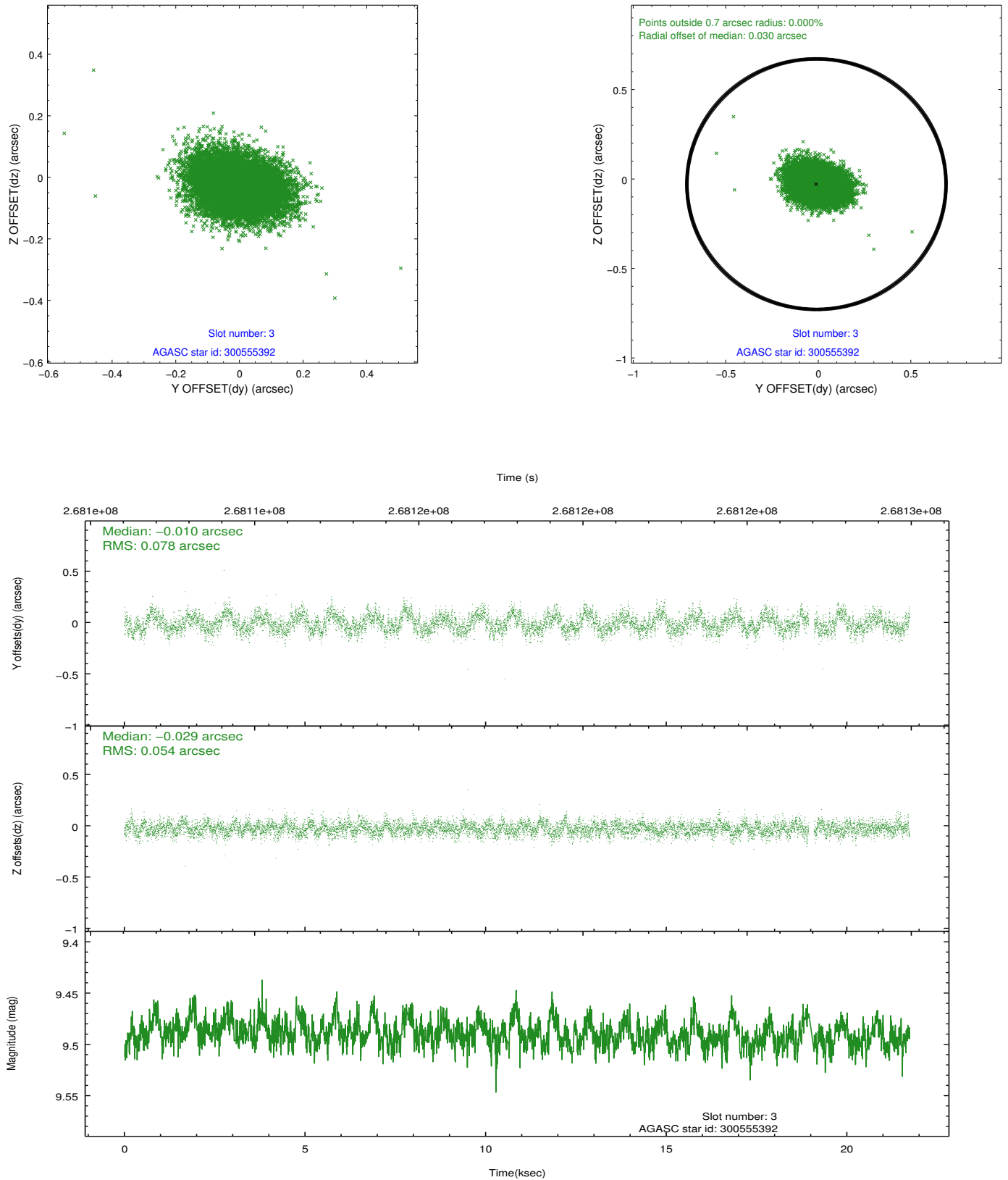


Slot Statistics

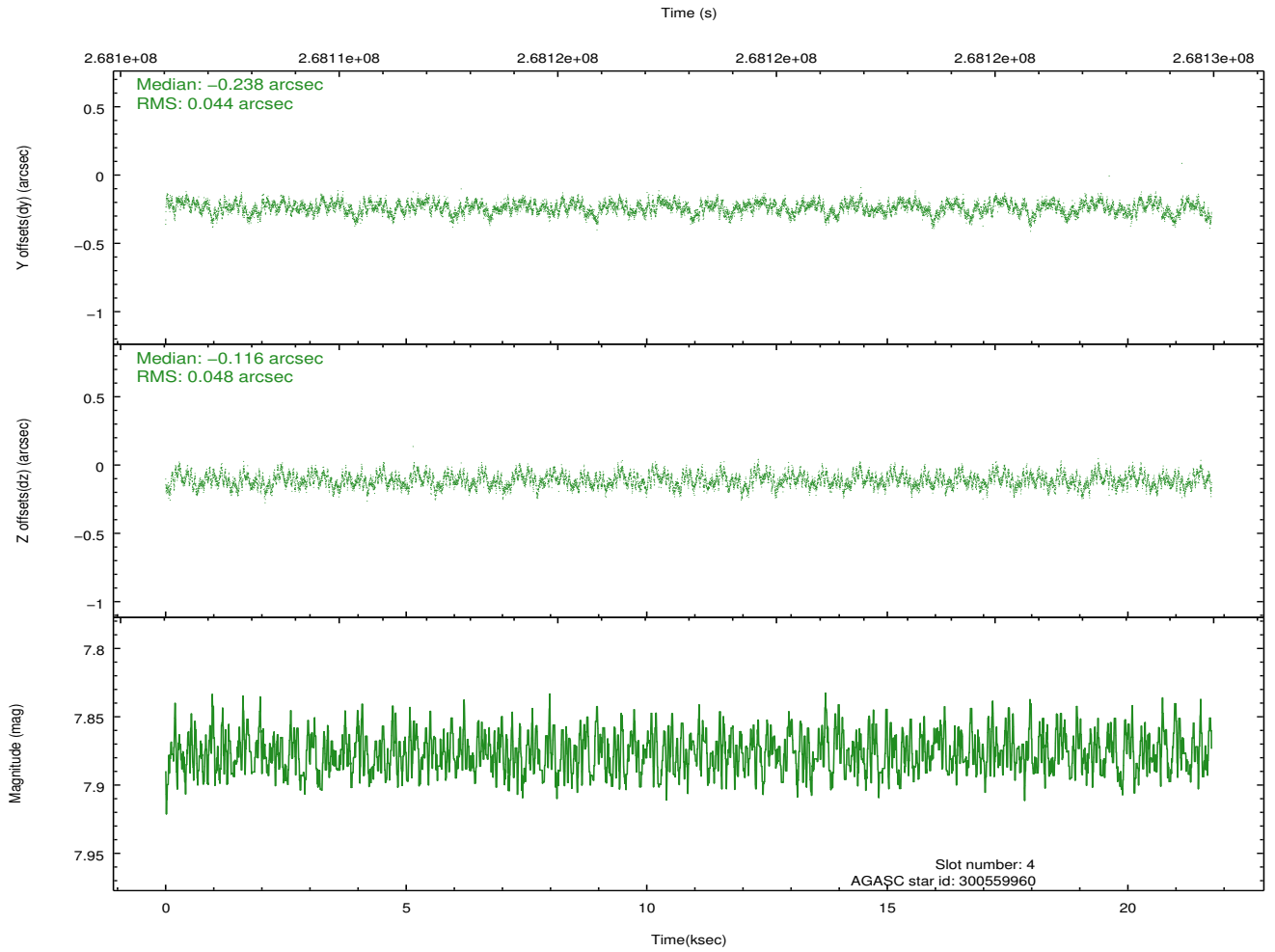
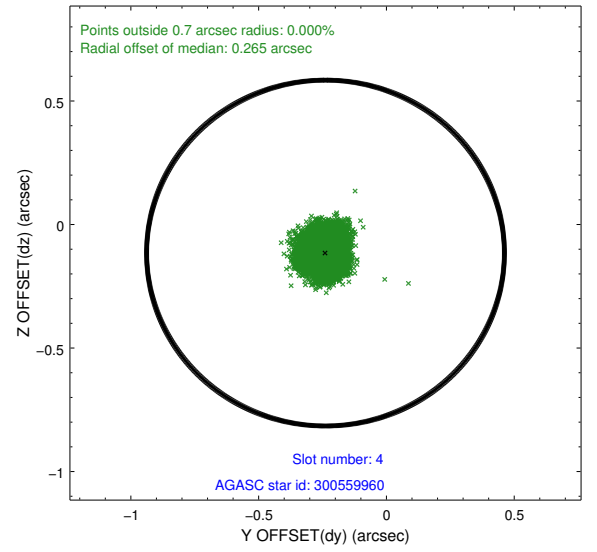
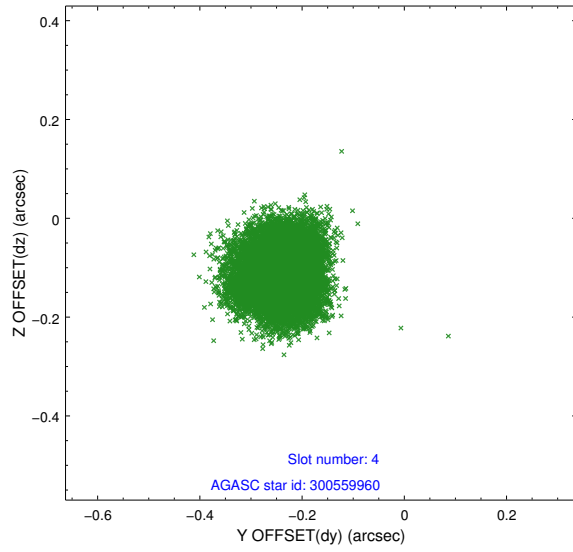
slot	status	id	mag	n_pts	med_dy	med_dz	dr1	dr2	ra	dec	mean_y	mean_z
0	FID	ACIS-I-2	7.14	5302	-0.092	-0.065	0.017	0.025	0.000000	0.000000	-764.19	-843.06
1	FID	ACIS-I-4	7.18	5301	0.195	0.073	0.009	0.014	0.000000	0.000000	2150.12	1063.12
2	FID	ACIS-I-5	7.22	5302	-0.203	0.060	0.012	0.019	0.000000	0.000000	-1817.88	1061.21
3	GUIDE	300555392	9.49	10523	-0.010	-0.029	0.100	0.164	23.346905	30.948175	1738.66	258.18
4	GUIDE	300559960	7.88	10603	-0.238	-0.116	0.071	0.111	22.944463	30.624765	889.04	1735.12
5	GUIDE	230039080	8.67	10604	0.180	0.001	0.062	0.101	23.320866	29.887774	-1960.77	1202.19
6	GUIDE	300553080	9.04	10597	-0.122	0.179	0.081	0.130	23.777101	30.773227	826.10	-895.61
7	GUIDE	230038816	9.74	10594	0.195	-0.029	0.145	0.235	23.414377	29.978866	-1707.51	843.35

2.4 Star Slots

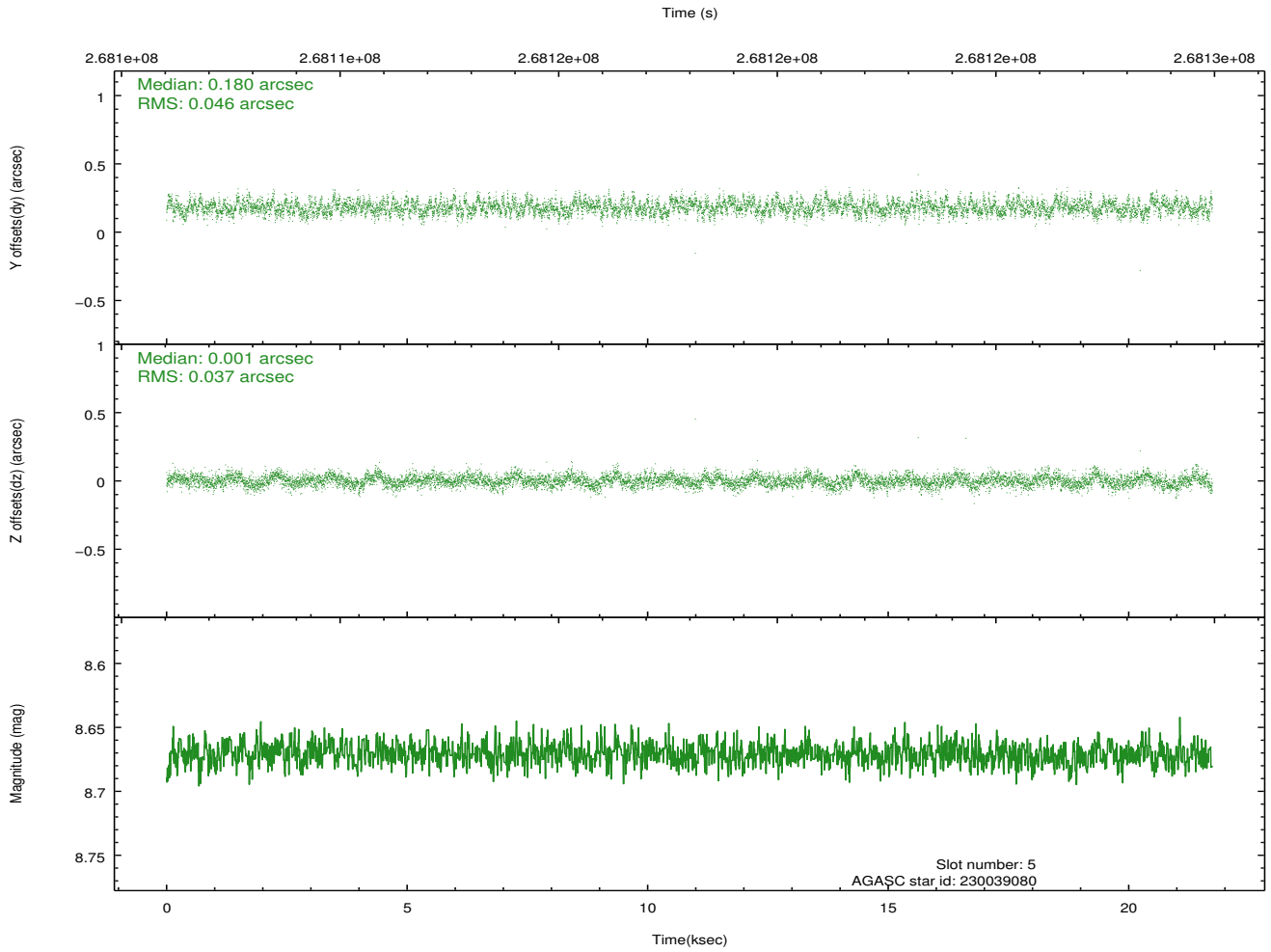
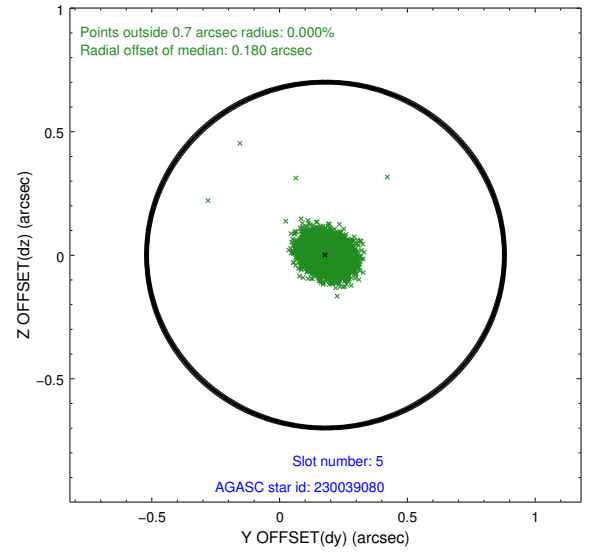
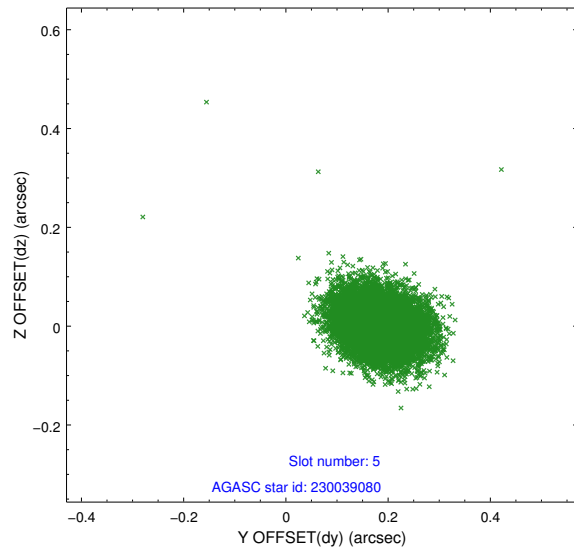
2.4.1 Slot 3



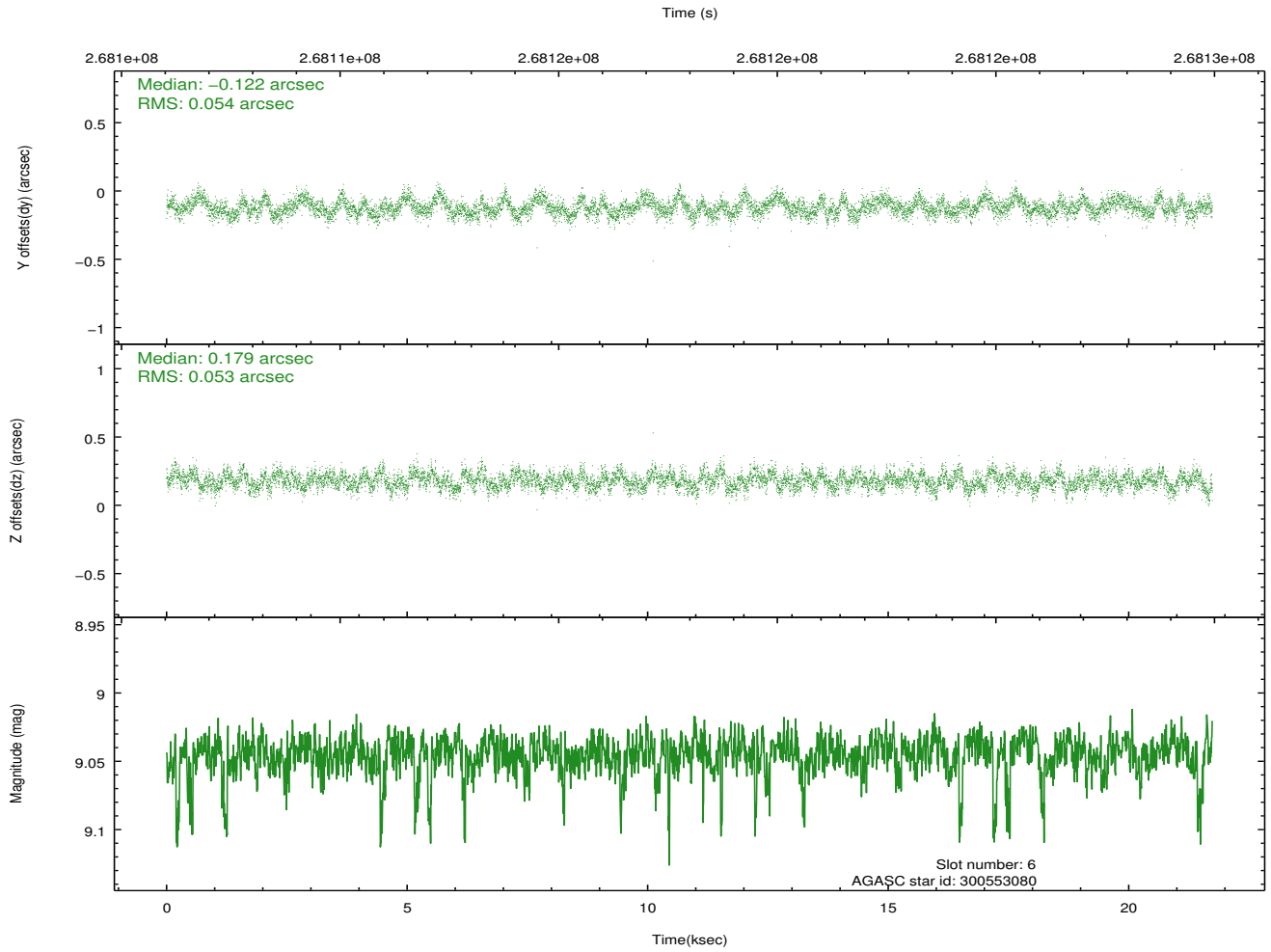
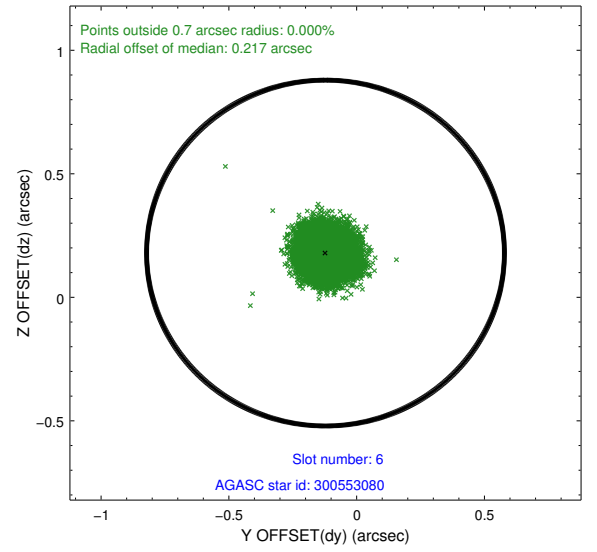
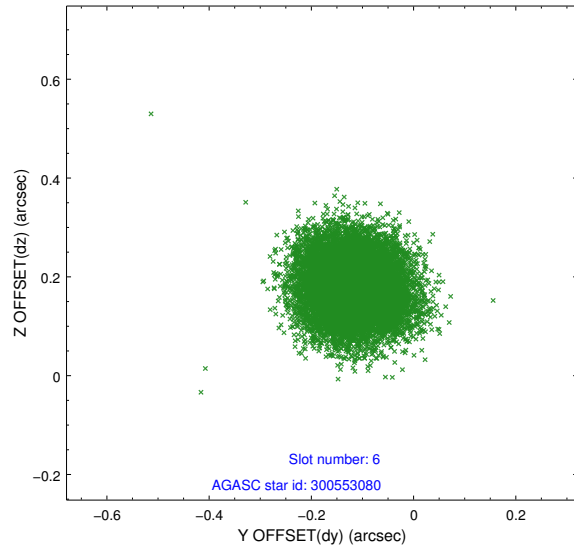
2.4.2 Slot 4



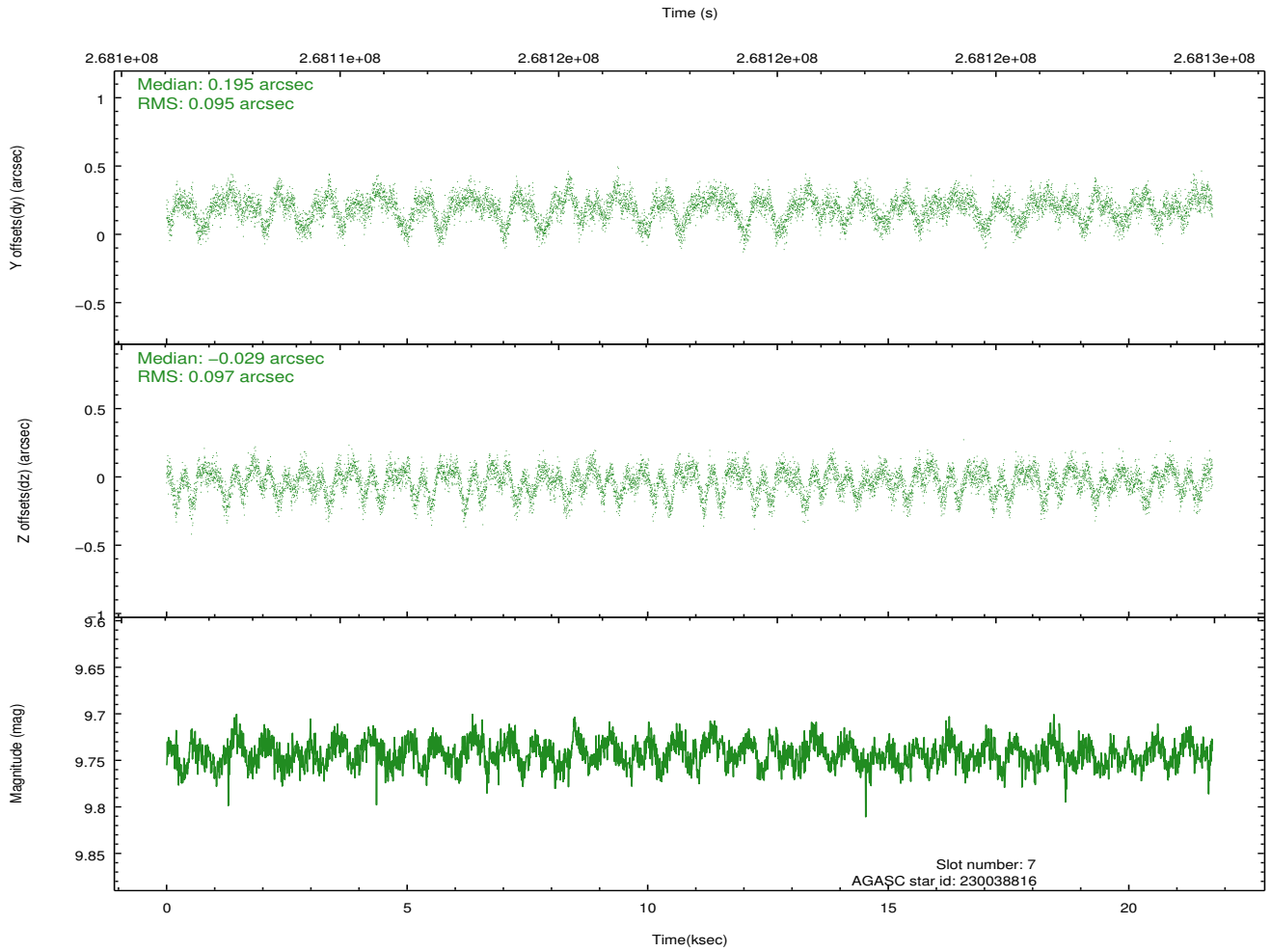
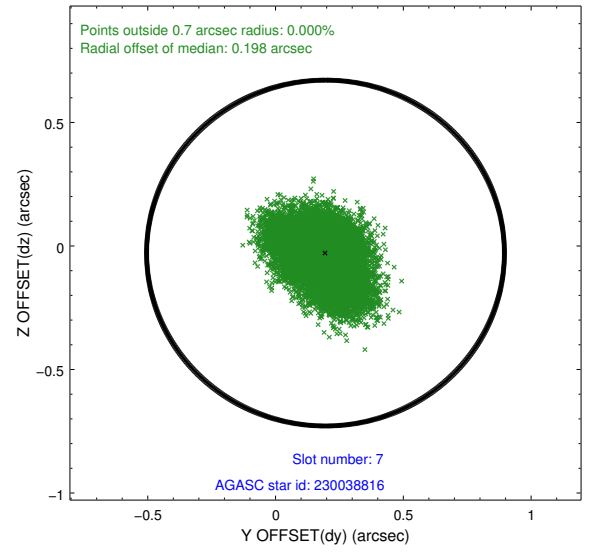
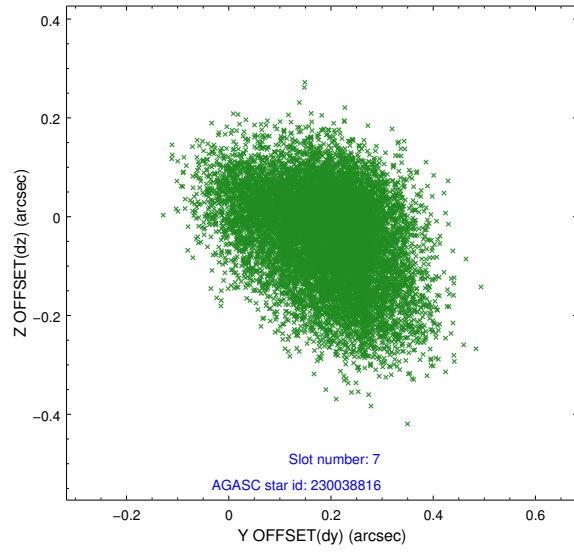
2.4.3 Slot 5



2.4.4 Slot 6

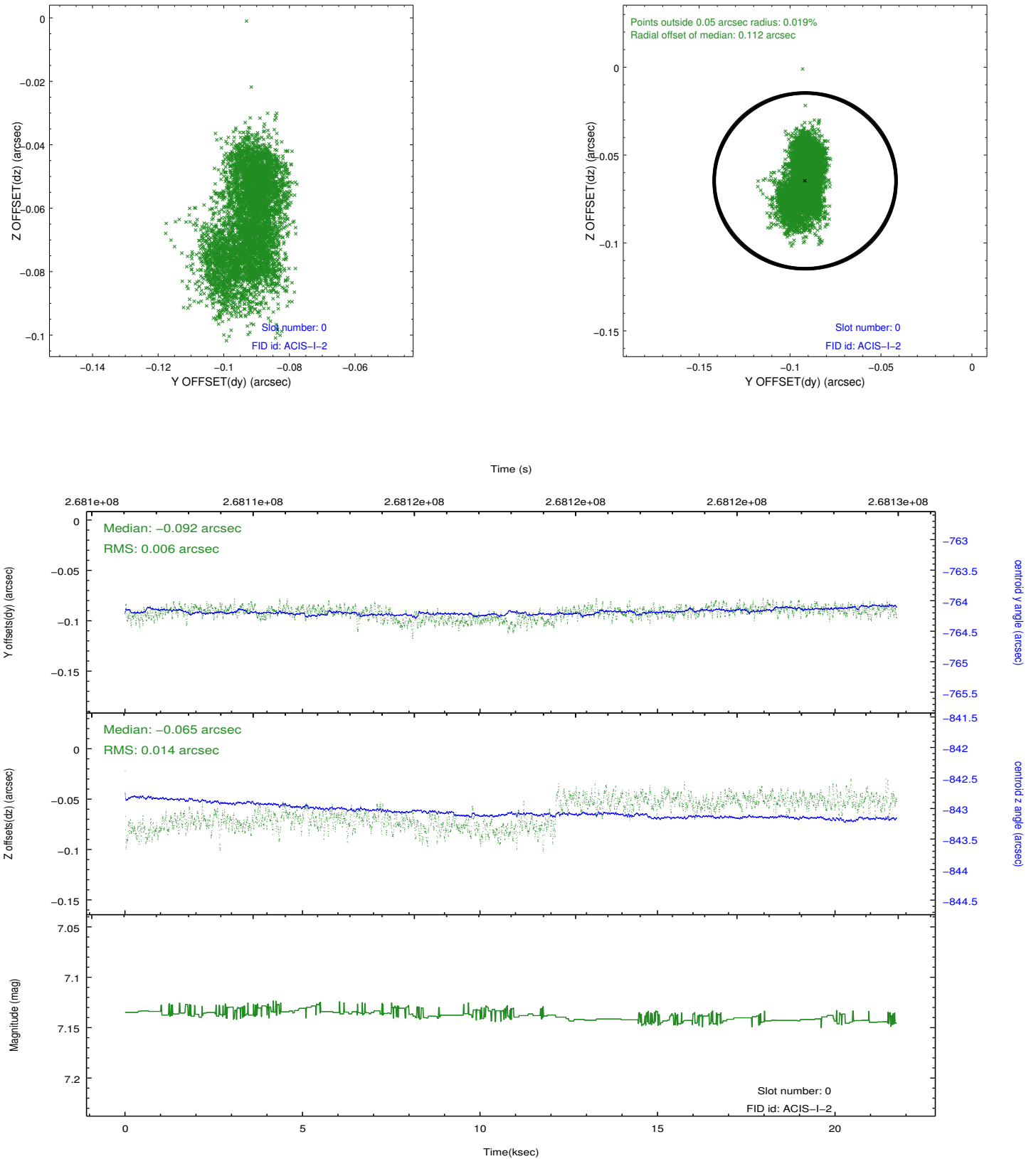


2.4.5 Slot 7

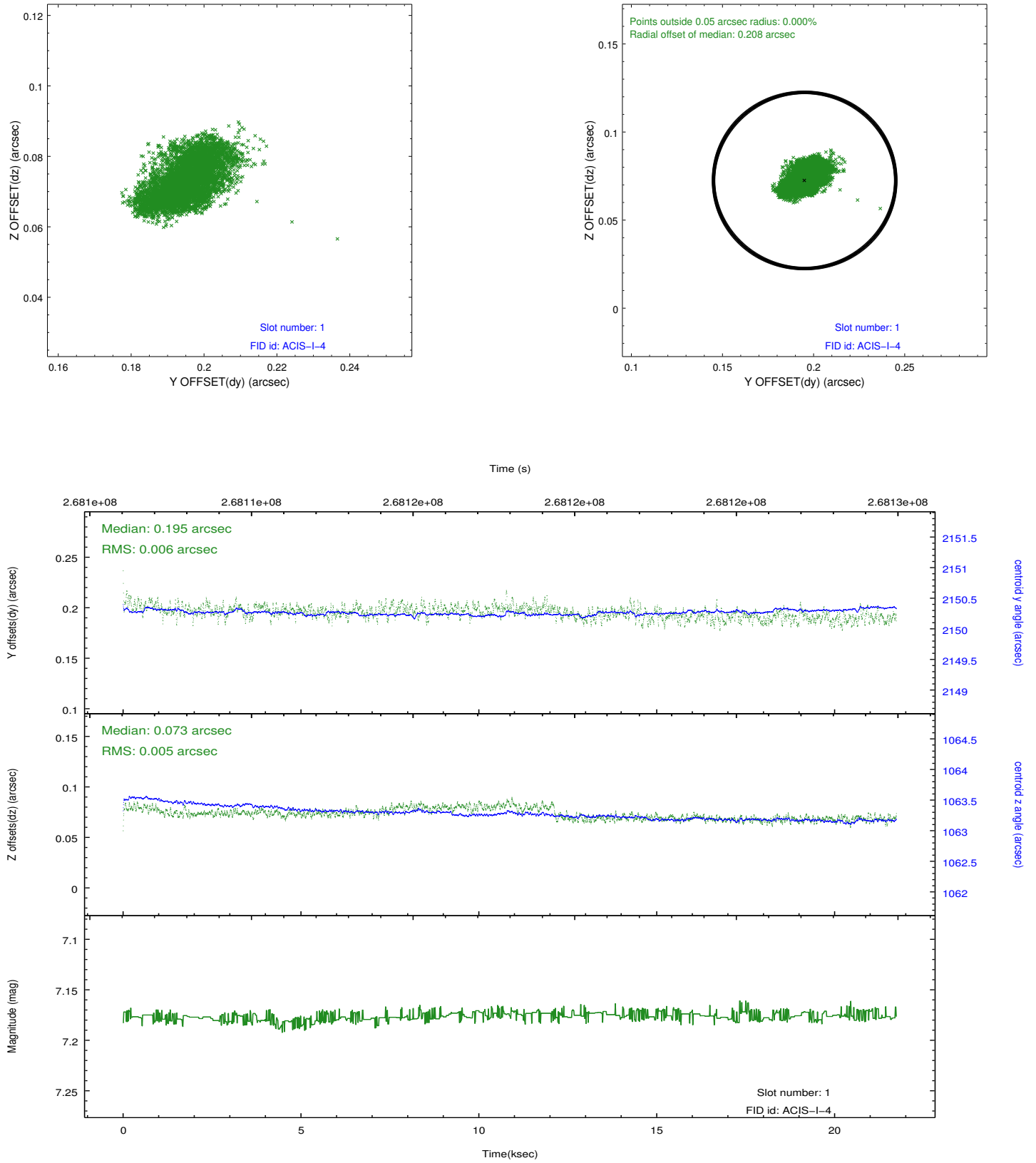


2.5 FID Slots

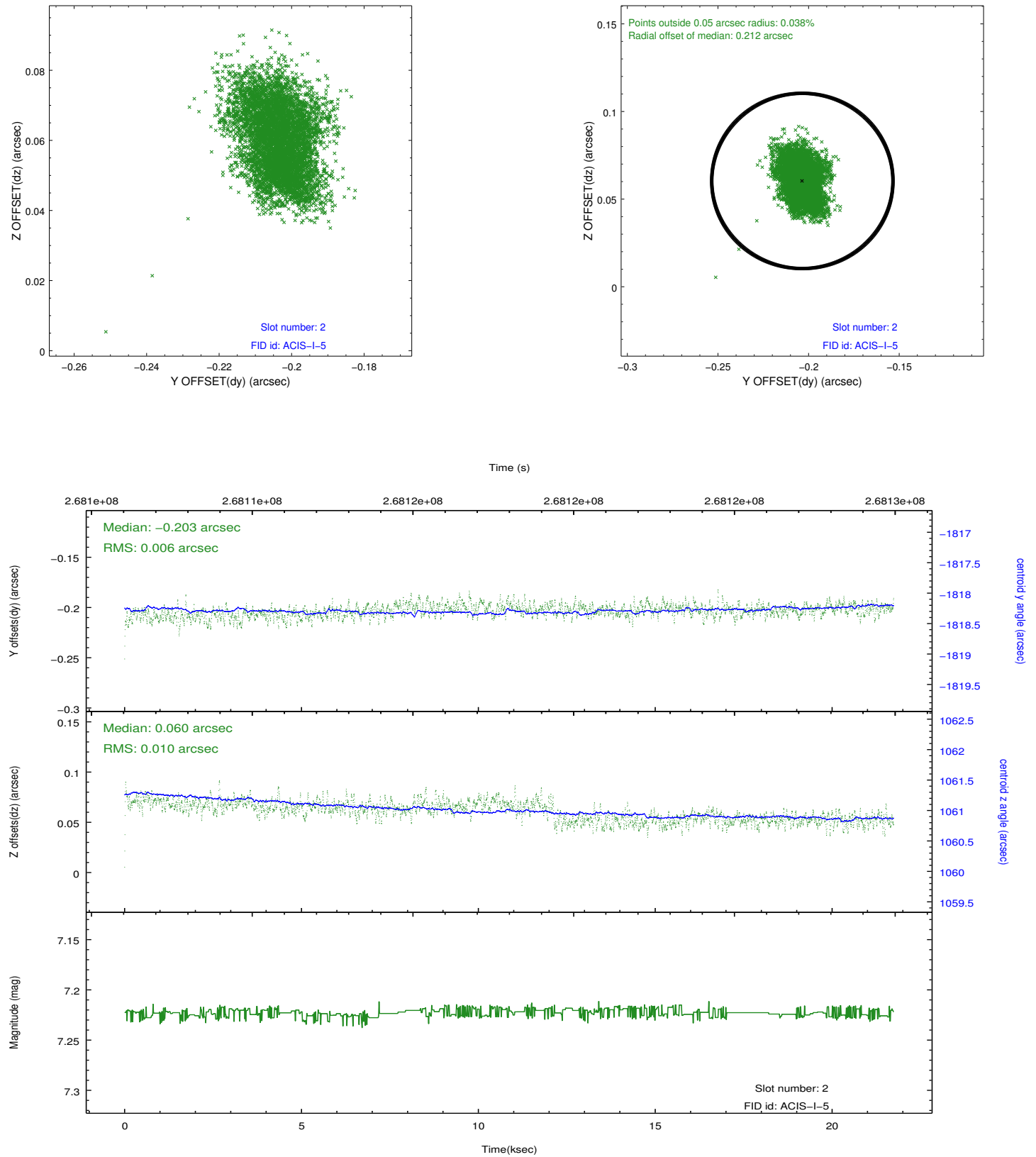
2.5.1 Slot 0



2.5.2 Slot 1



2.5.3 Slot 2



A Summary

A.1 Status

V&V Scientist	Jen Lauer
V&V Date (YYYY-MM-DD)	2012.04.05
V&V Edition	1
V&V Disposition and Status	OK
V&V Charge Time	21.7247179

A.2 Comments