

V&V Reference Report

L2 ASCDS Version : 8.4.3

Observation 6844 - L2 Version 2
Chandra X-Ray Center

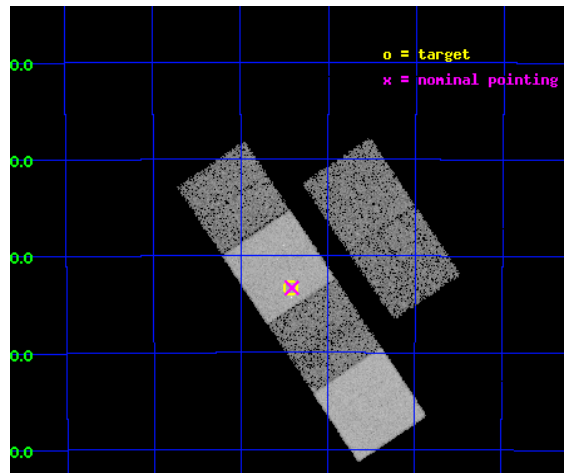
L2 Processing Date : Mar 26 2012

Contents

1	Front	2
2	OBI	3
2.1	OBI	3
2.1.1	Images	3
2.1.2	Bias	3
2.1.3	Parameters	4
2.1.4	Events	4
2.2	Compared Parameters	5
2.3	Aspect	6
2.4	Star Slots	9
2.4.1	Slot 3	9
2.4.2	Slot 4	10
2.4.3	Slot 5	11
2.4.4	Slot 6	12
2.4.5	Slot 7	13
2.5	FID Slots	14
2.5.1	Slot 0	14
2.5.2	Slot 1	15
2.5.3	Slot 2	16
A	Summary	17
A.1	Status	17
A.2	Comments	17

1 Front

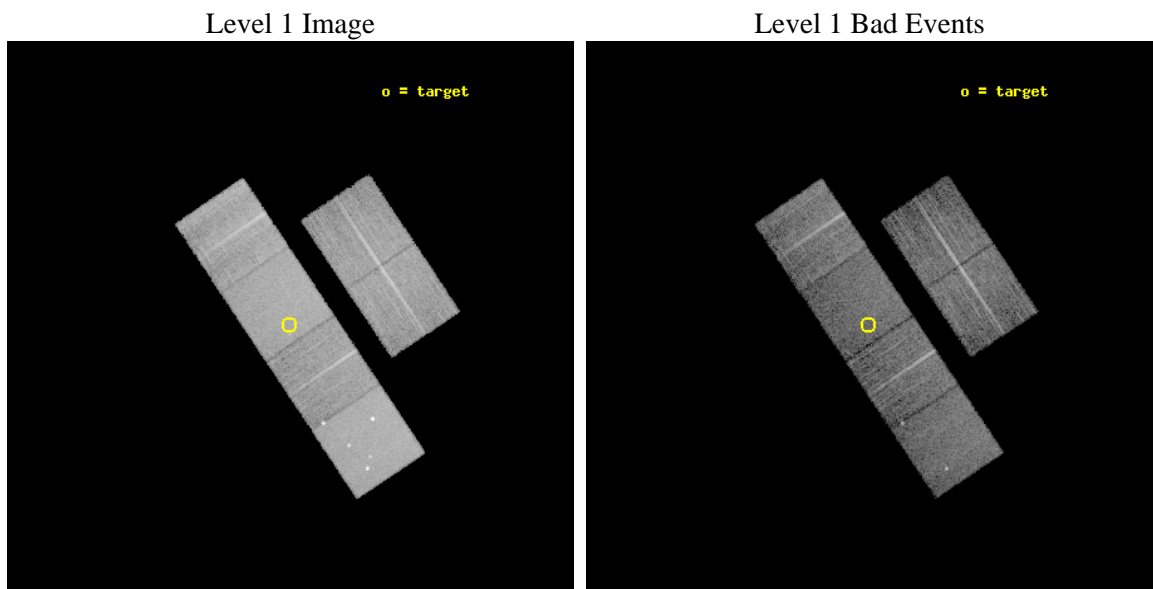
seq_num	701262	Sequence number
obs_id	6844	Observation id
title	Unveiling obscured AGNs in close pairs of similar sized galaxies	P
observer	Dr. Nora Loiseau	Principal investigator
object	AM 0127-524	Source name
dtcycle	0	
cycle	P	events from which exps? Prim/Second/Both
ra_targ	22.357083	Observer's specified target RA [deg]
dec_targ	-52.555278	Observer's specified target Dec [deg]
ra_nom	22.353604799165	Nominal RA [deg]
dec_nom	-52.555396456932	Nominal Dec [deg]
roll_nom	236.17336754748	Nominal Roll [deg]
revision	2	Processing version of data
ontime	9278.8959161043	Sum of GTIs [s]
livetime	9161.4009489343	Livetime [s]
ontime2	9272.4549956322	Sum of GTIs [s]
ontime3	9278.7727960944	Sum of GTIs [s]
ontime5	9278.854876101	Sum of GTIs [s]
ontime6	9269.090965122	Sum of GTIs [s]
ontime7	9278.8959161043	Sum of GTIs [s]
ontime8	9272.2497159243	Sum of GTIs [s]
l2events	139100	Number of level 2 events



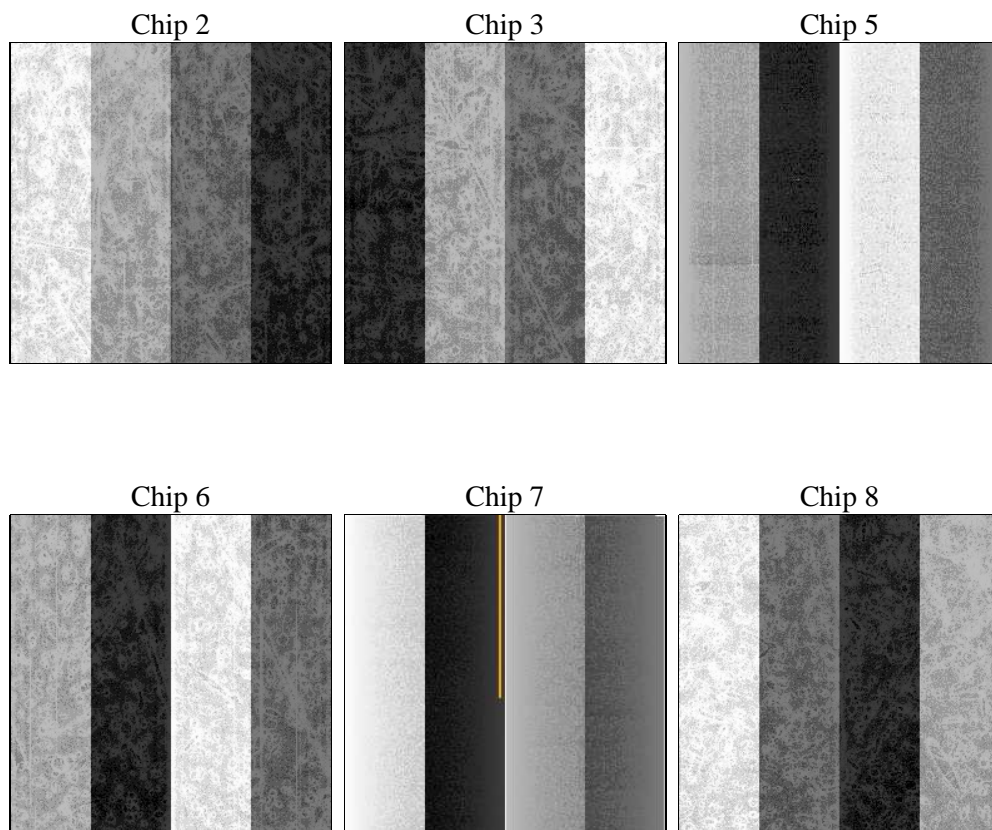
2 OBI

2.1 OBI

2.1.1 Images



2.1.2 Bias



2.1.3 Parameters

obi_num	0	Obi number	sched_exp_time	9522.661000	[s] Scheduled observation exposure time
ascdsver	8.4.3	Processing system revision	ontime	9278.8959161043	Sum of GTIs [s]
caldsver	4.4.8	 	ontime2	9272.4549956322	Sum of GTIs [s]
date	2012-03-26T06:32:40	Date and time of file creation	ontime3	9278.7727960944	Sum of GTIs [s]
revision	2	Processing version of data	ontime5	9278.854876101	Sum of GTIs [s]
			ontime6	9269.090965122	Sum of GTIs [s]
			ontime7	9278.8959161043	Sum of GTIs [s]
			ontime8	9272.2497159243	Sum of GTIs [s]
			l1events	587988	Number of level 1 events

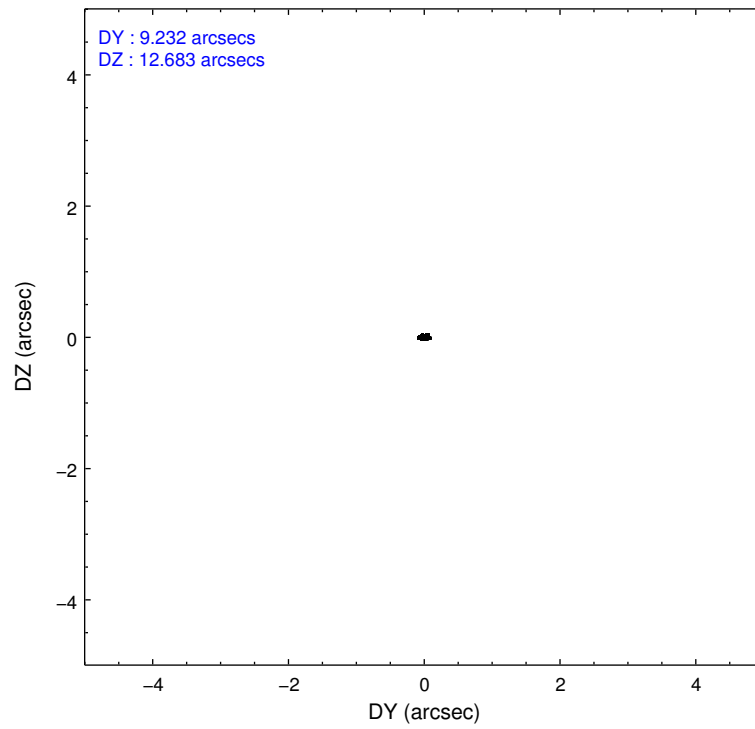
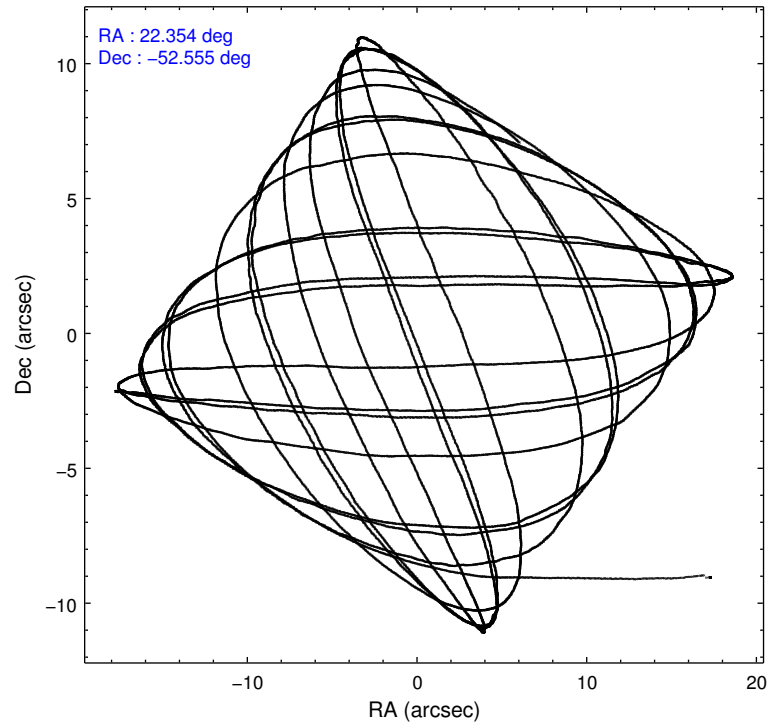
2.1.4 Events

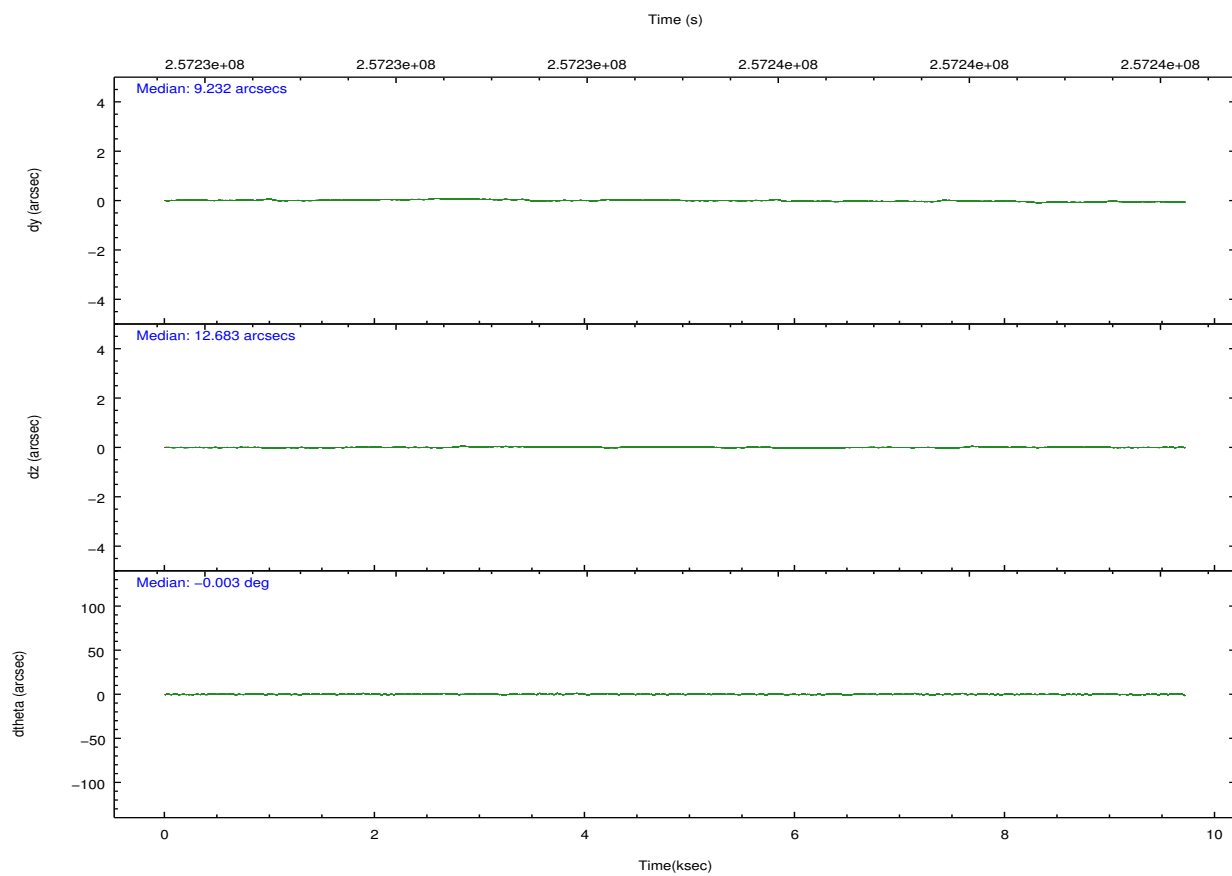
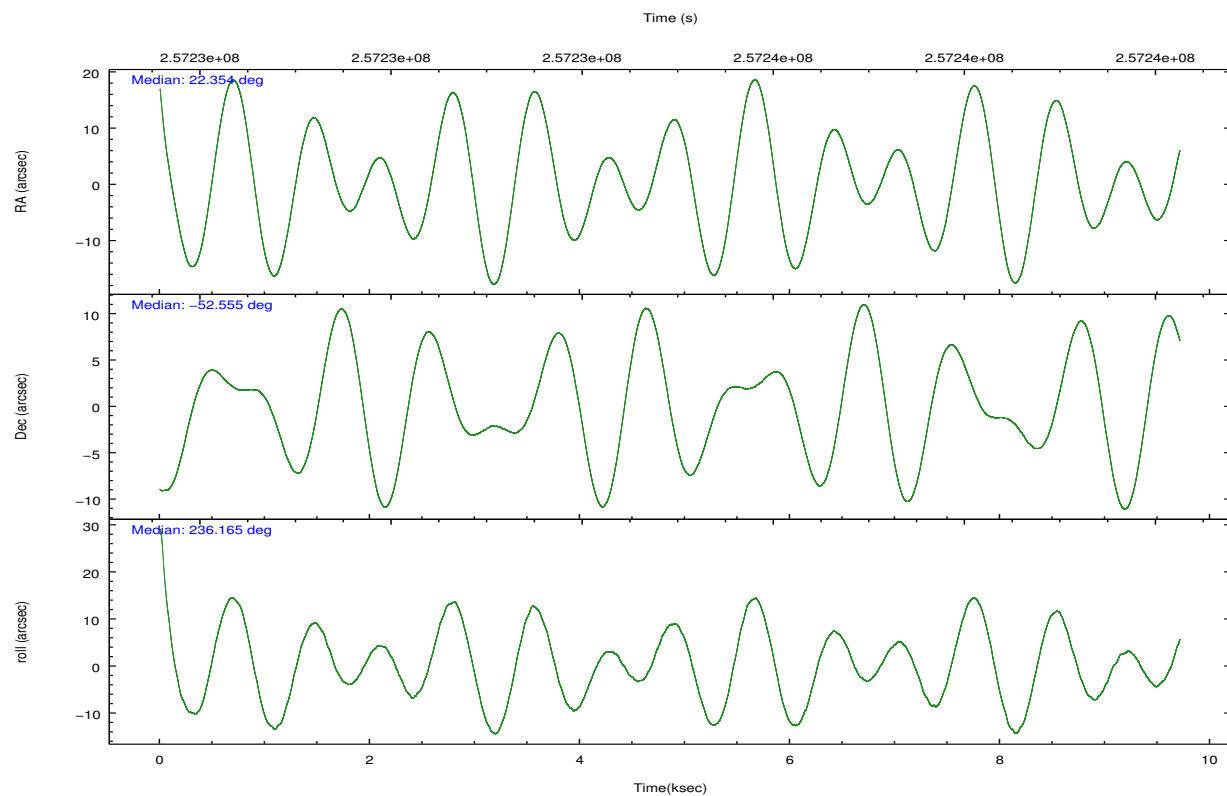
	ccd 2	ccd 3	ccd 5	ccd 6	ccd 7	ccd 8		ccd 2	ccd 3	ccd 5	ccd 6	ccd 7	ccd 8
level 1 events	84879	79044	127745	79196	110963	106161	grade 0 events	5233	4847	8224	4703	4299	7894
rejected events	74090	68627	66714	68400	63615	82191		6%	6%	6%	5%	3%	7%
rejected %	87%	86%	52%	86%	57%	77%	grade 1 events	66	57	316	46	117	91
								0%	0%	0%	0%	0%	0%
							grade 2 events	2093	1898	17590	2161	9263	5105
								2%	2%	13%	2%	8%	4%
							grade 3 events	926	961	2386	933	4013	2494
								1%	1%	1%	1%	3%	2%
							grade 4 events	893	977	2291	980	4055	2380
								1%	1%	1%	1%	3%	2%
							grade 5 events	3017	3512	9112	3584	10432	4846
								3%	4%	7%	4%	9%	4%
							grade 6 events	1662	1737	30565	2023	25735	6102
								1%	2%	23%	2%	23%	5%
							grade 7 events	70989	65055	57261	64766	53049	77249
								83%	82%	44%	81%	47%	72%

2.2 Compared Parameters

Parameter	Planned	Actual	Parameter	Planned	Actual
Instrument	ACIS	ACIS	Obspar format version number	7	7
Detector	ACIS-235678	ACIS-235678	Obspar file type	PREDICTED	ACTUAL
Grating	NONE	NONE	Obspar update status	NONE	UPDATED
Data mode	FAINT	FAINT	Number of optional ACIS chips dropped	0	0
Observation mode	POINTING	POINTING	On-chip summing requested	N	N
[deg] Pointing RA	22.356053	22.35360479916453	Subarray requested	NONE	NONE
[deg] Pointing Dec	-52.528187	-52.55539645693183	Alternating exposures requested	N	N
[deg] Pointing Roll	236.018681	236.1733675474827	[s] Primary exposure time	0.000000	3.2
[mm] SIM focus pos	-0.684267	-0.6828225247311905			
[mm] SIM defocus	0	0.001444936568705701			
[mm] SIM translation stage pos	-190.132523	-190.1400660498719			
[mm] SIM translation stage offset	0	0.00754346686406393			
[s] Observation start time (MET)	257230259.184000	257229085.08715			
Observation start date	2006-02-25T04:49:54	2006-02-25T04:31:25			
[s] Observation end time (MET)	257239782.184000	257240008.00016			
Observation end date	2006-02-25T07:28:37	2006-02-25T07:33:28			
Read mode	TIMED	TIMED			

2.3 Aspect



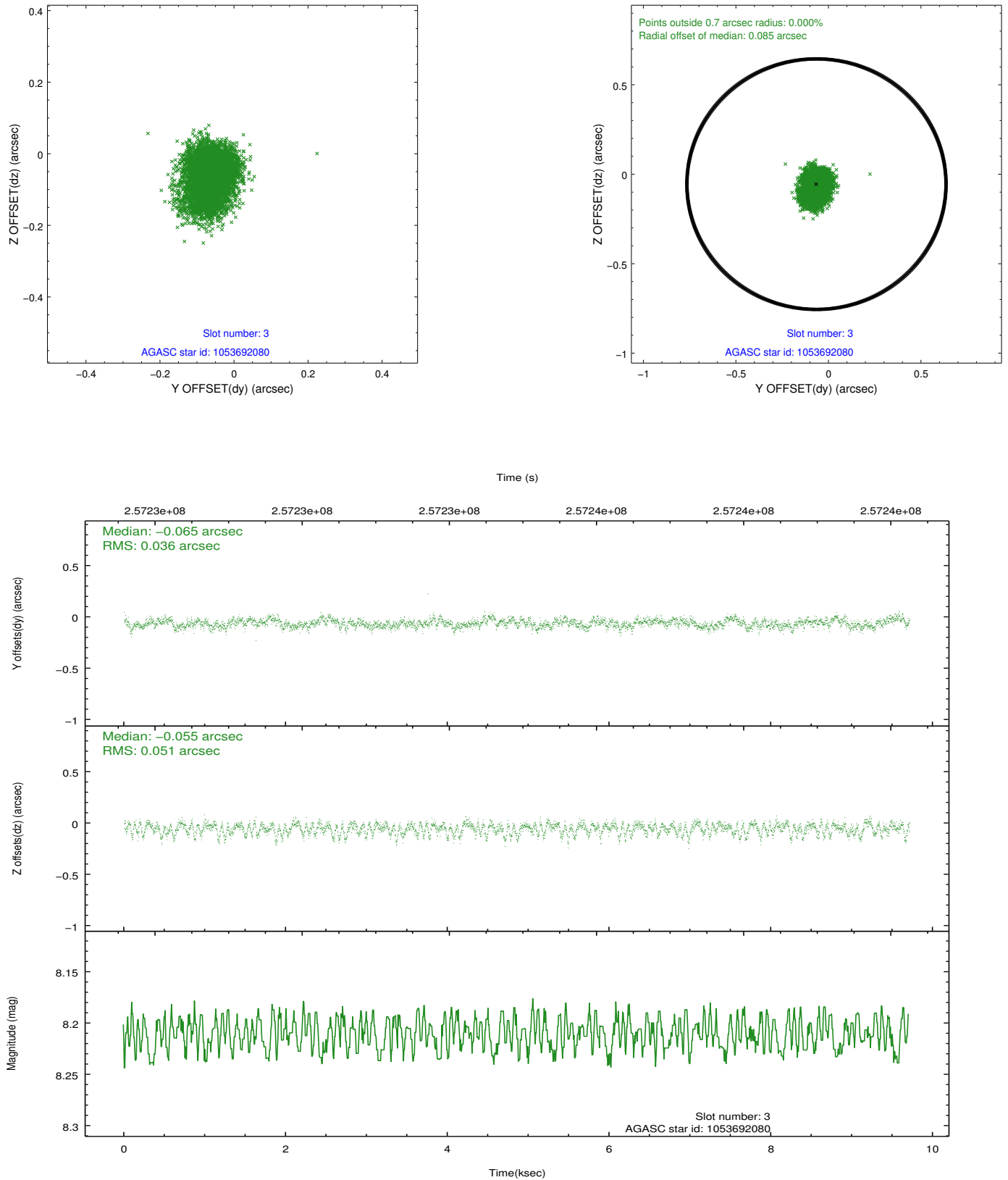


Slot Statistics

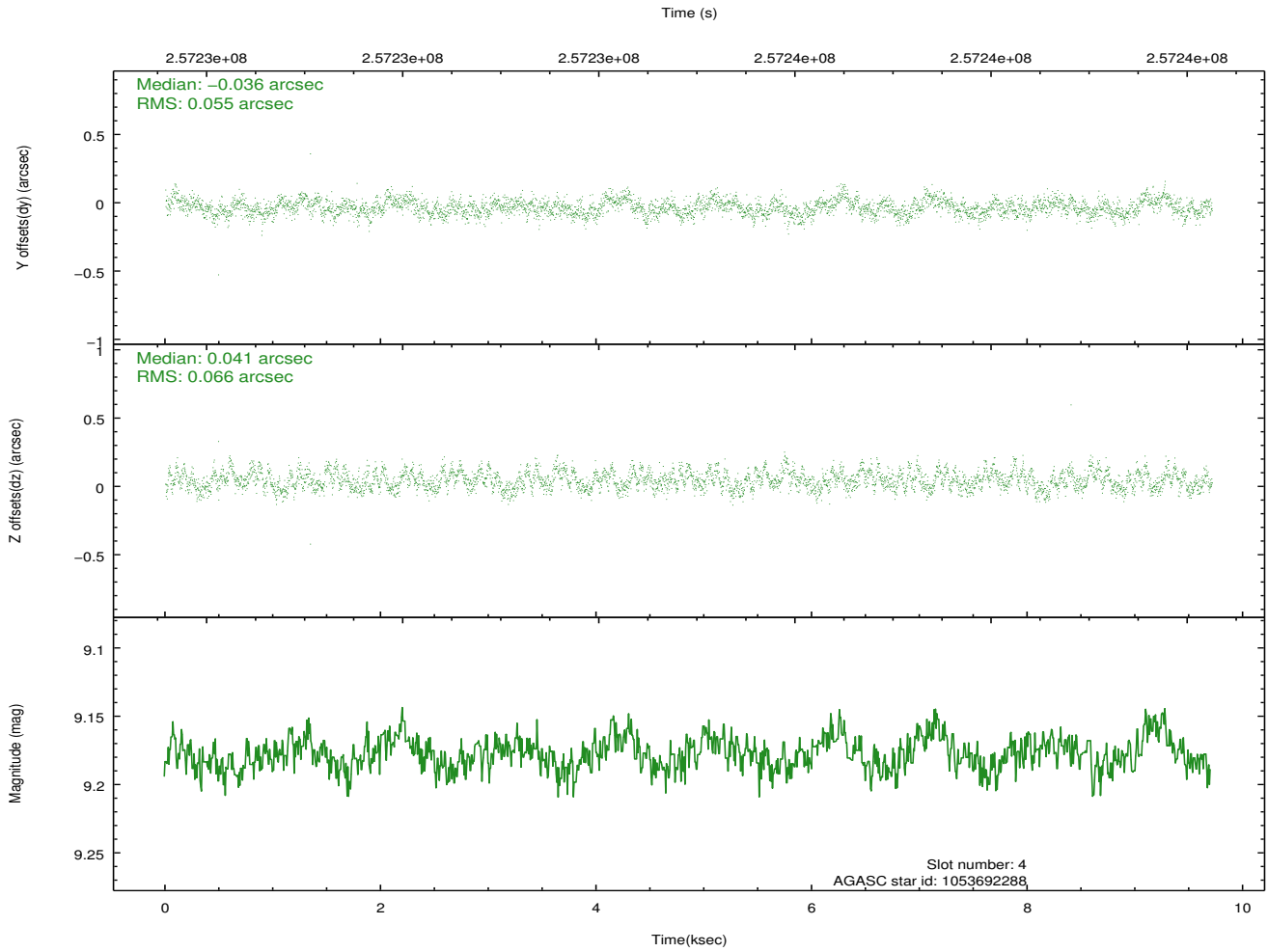
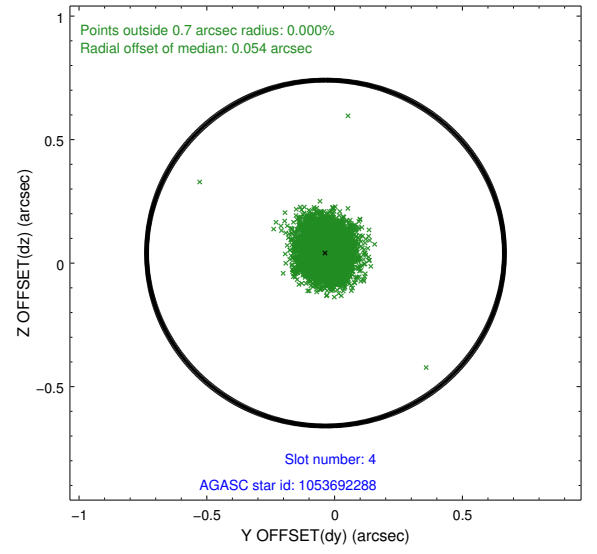
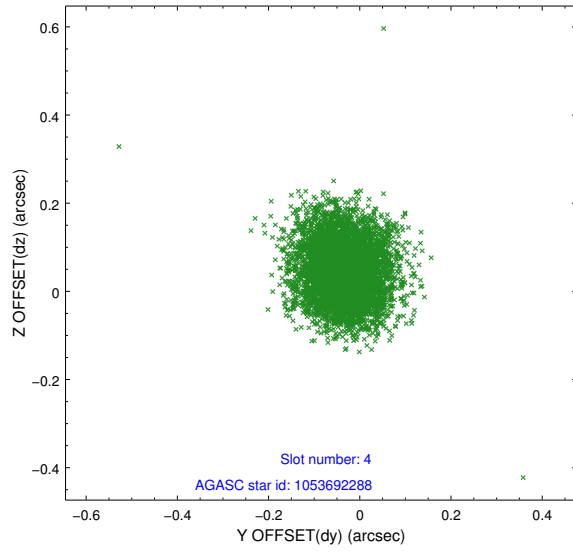
slot	status	id	mag	n_pts	med_dy	med_dz	dr1	dr2	ra	dec	mean_y	mean_z
0	FID	ACIS-S-2	7.11	2368	-0.007	-0.041	0.006	0.011	0.000000	0.000000	-762.07	-1734.03
1	FID	ACIS-S-4	7.20	2369	0.122	0.015	0.005	0.010	0.000000	0.000000	2151.11	173.90
2	FID	ACIS-S-5	7.23	2369	-0.146	0.035	0.006	0.010	0.000000	0.000000	-1814.32	168.27
3	GUIDE	1053692080	8.21	4737	-0.065	-0.055	0.066	0.109	21.774063	-51.965778	-953.91	-2197.82
4	GUIDE	1053692288	9.18	4729	-0.036	0.041	0.091	0.144	22.173427	-52.340112	-336.29	-711.38
5	GUIDE	1053693024	6.91	4737	-0.070	0.008	0.056	0.086	22.386469	-52.366131	-520.93	-270.35
6	GUIDE	1053693136	8.91	4736	0.214	0.148	0.069	0.112	22.421783	-51.787413	-2292.49	-1369.09
7	GUIDE	1110839600	8.98	4735	-0.047	-0.140	0.074	0.120	23.222262	-52.615568	-789.55	1752.55

2.4 Star Slots

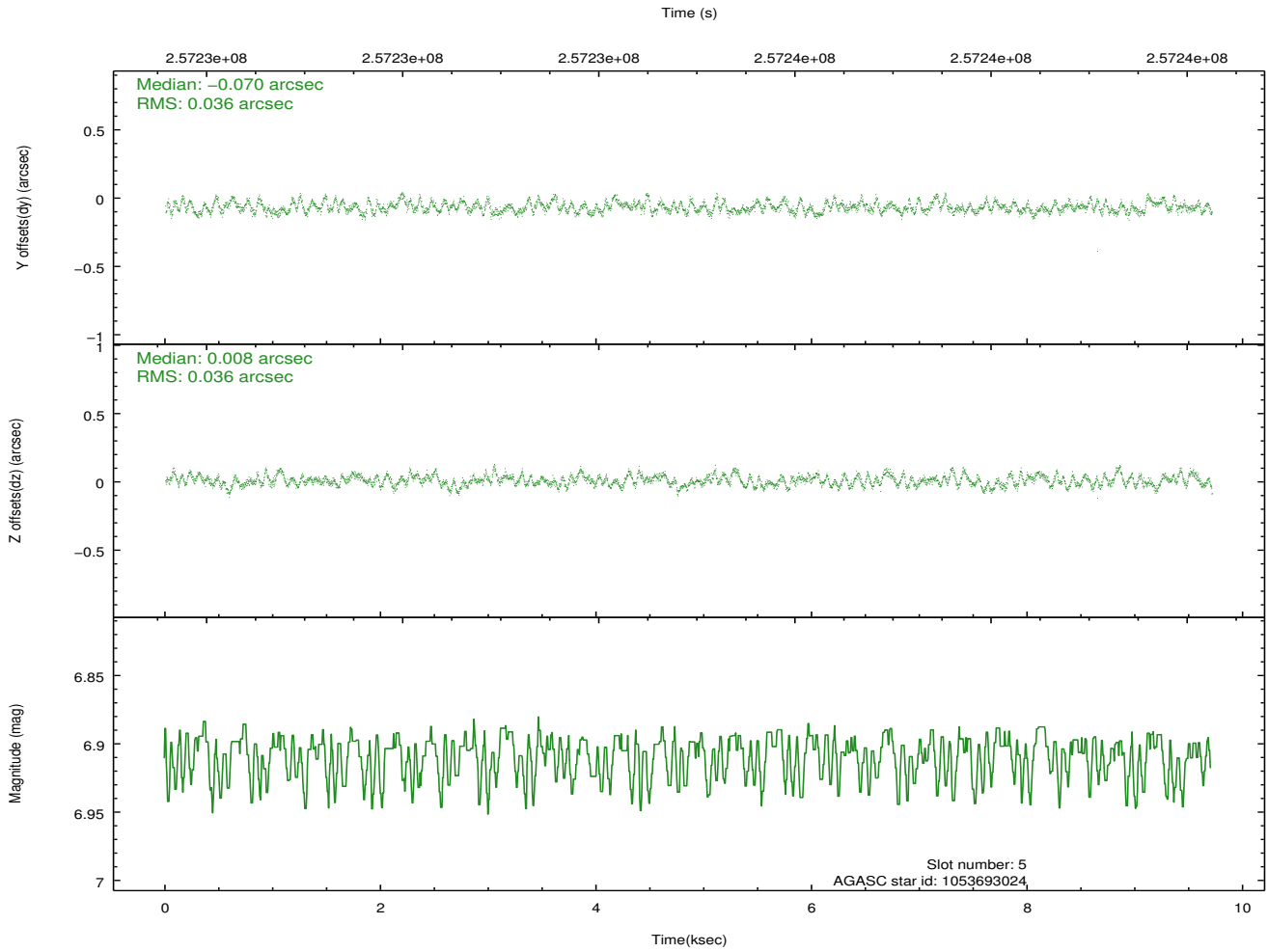
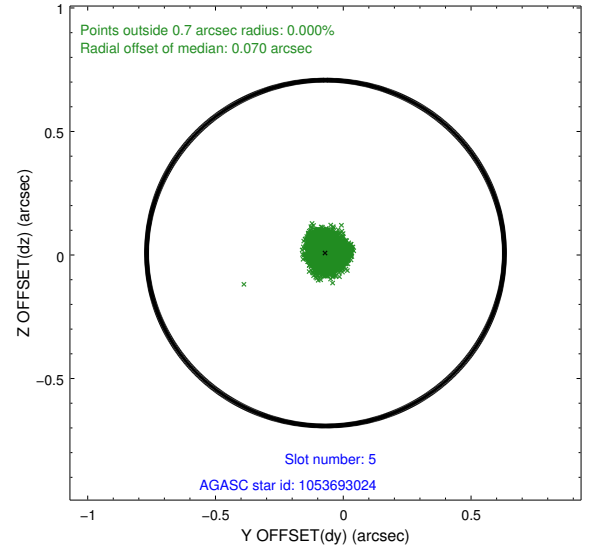
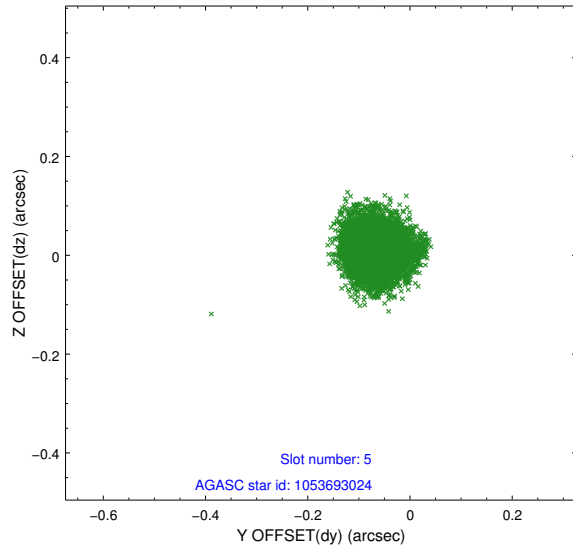
2.4.1 Slot 3



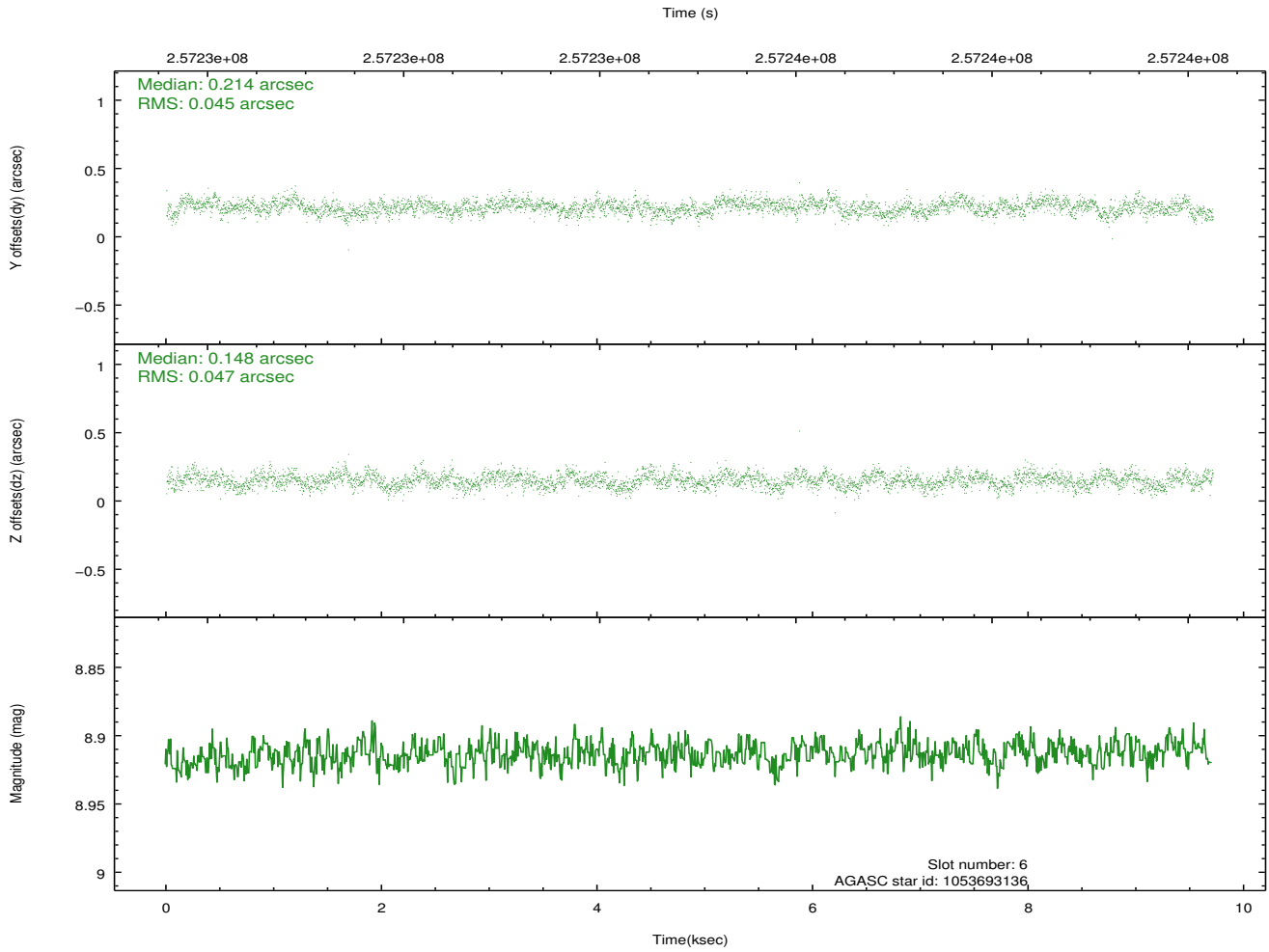
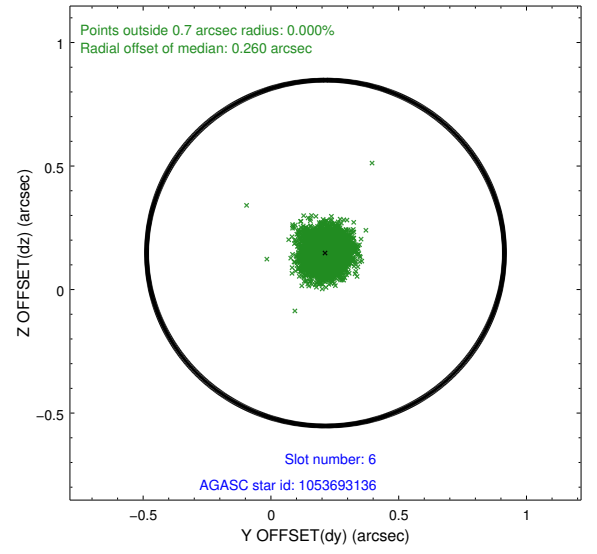
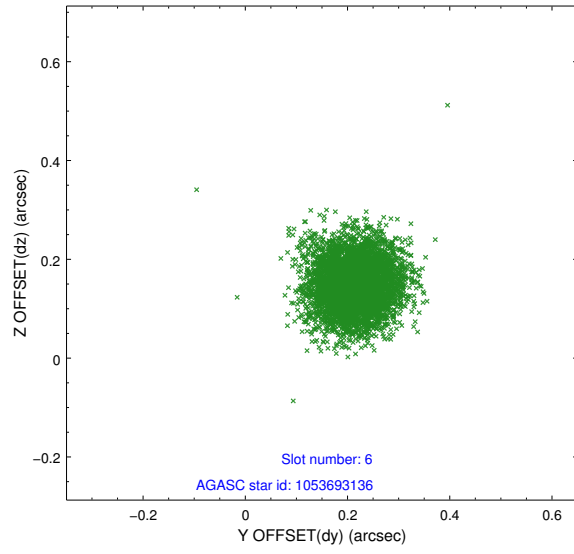
2.4.2 Slot 4



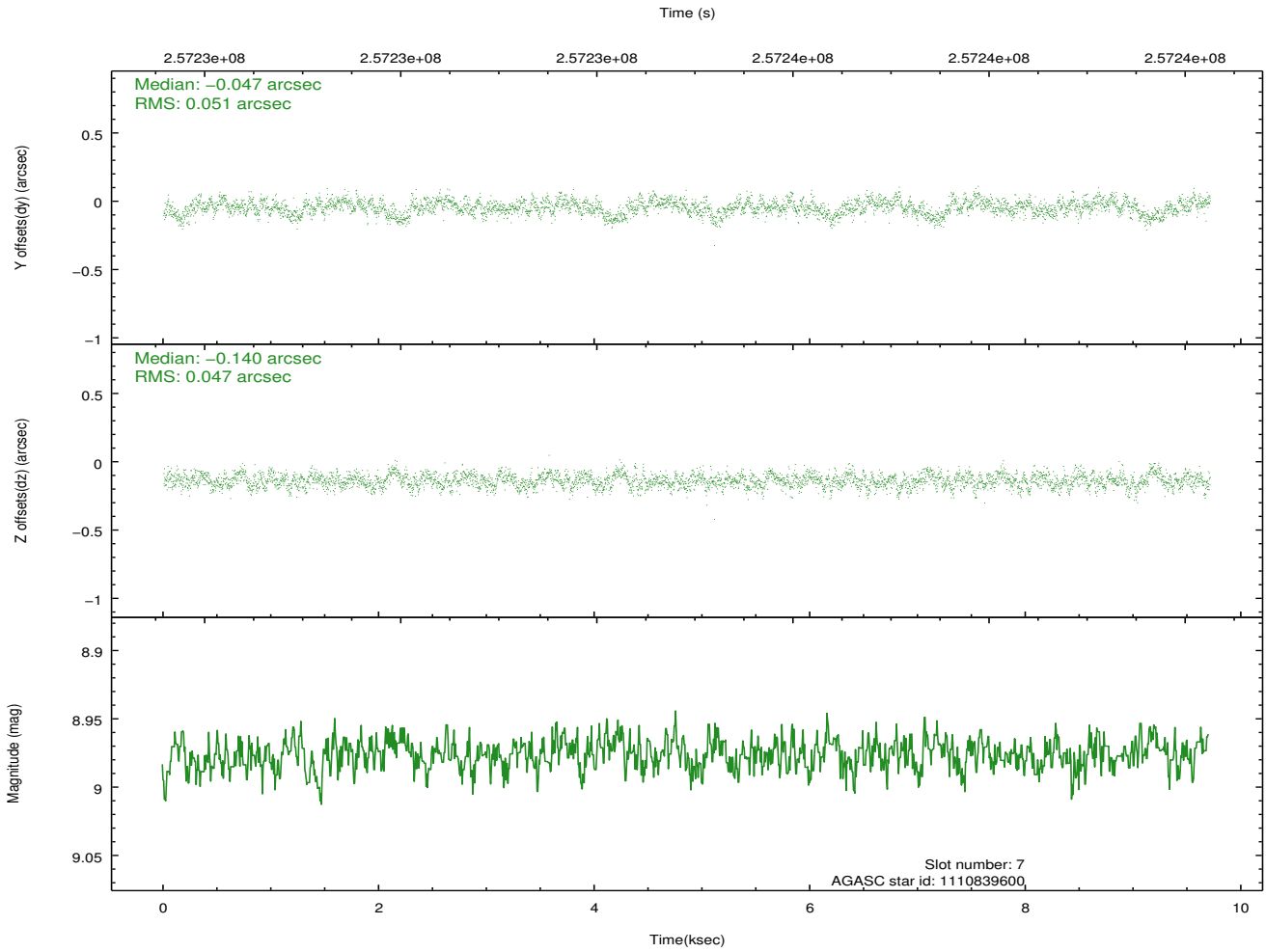
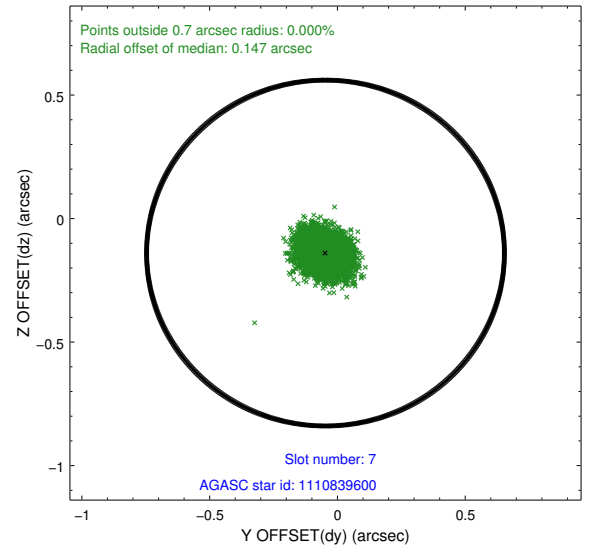
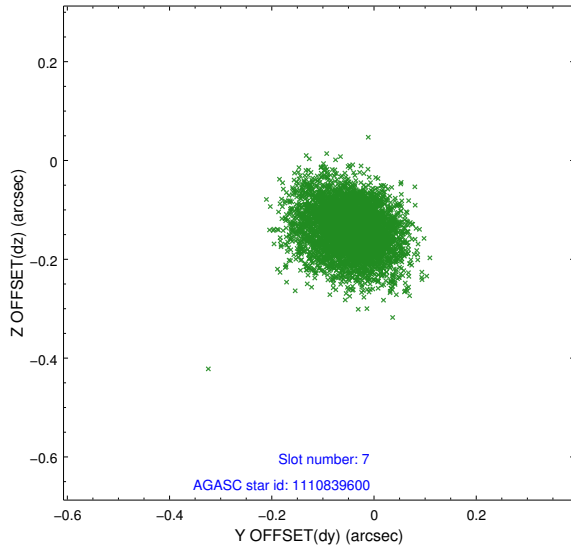
2.4.3 Slot 5



2.4.4 Slot 6

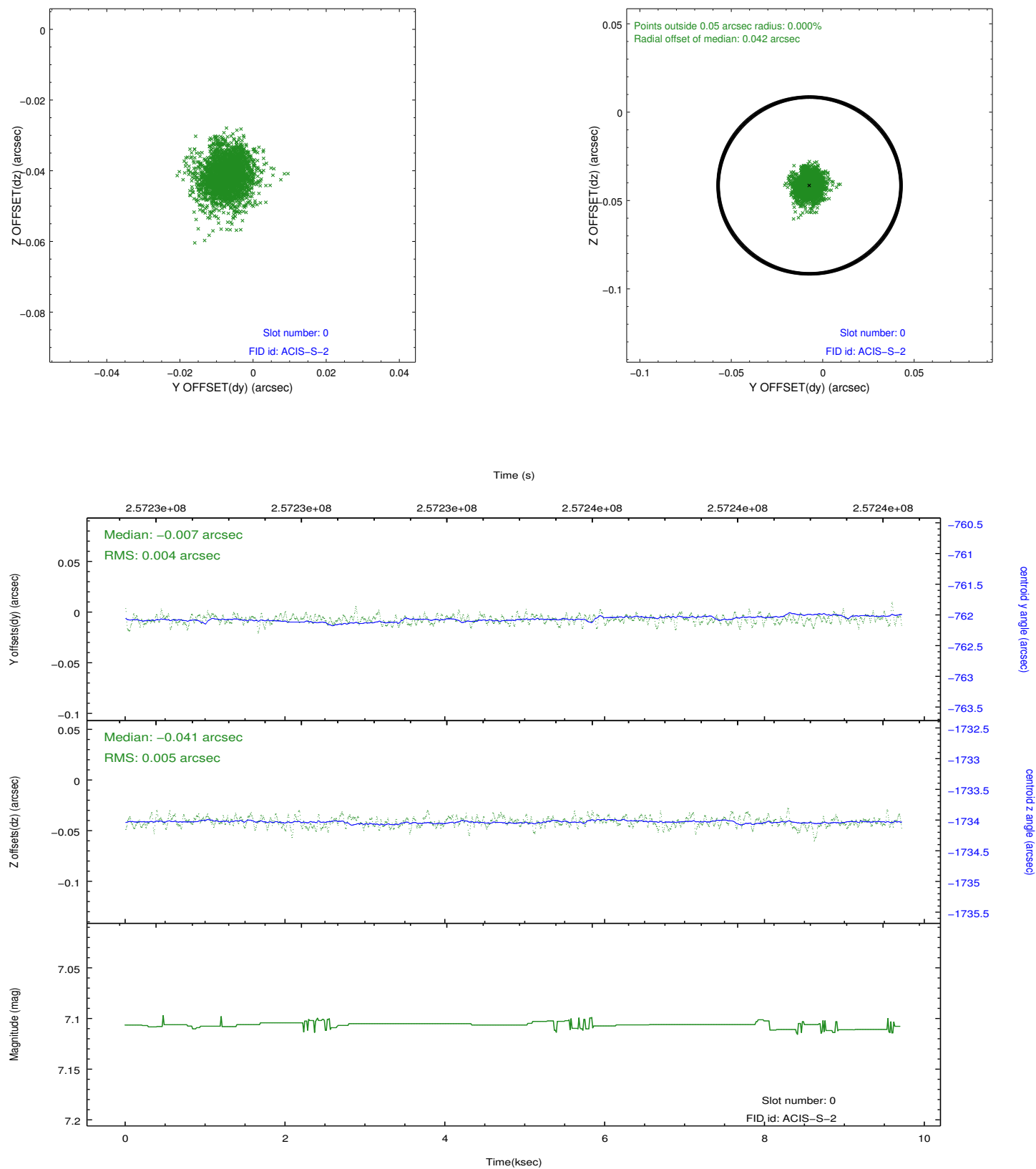


2.4.5 Slot 7

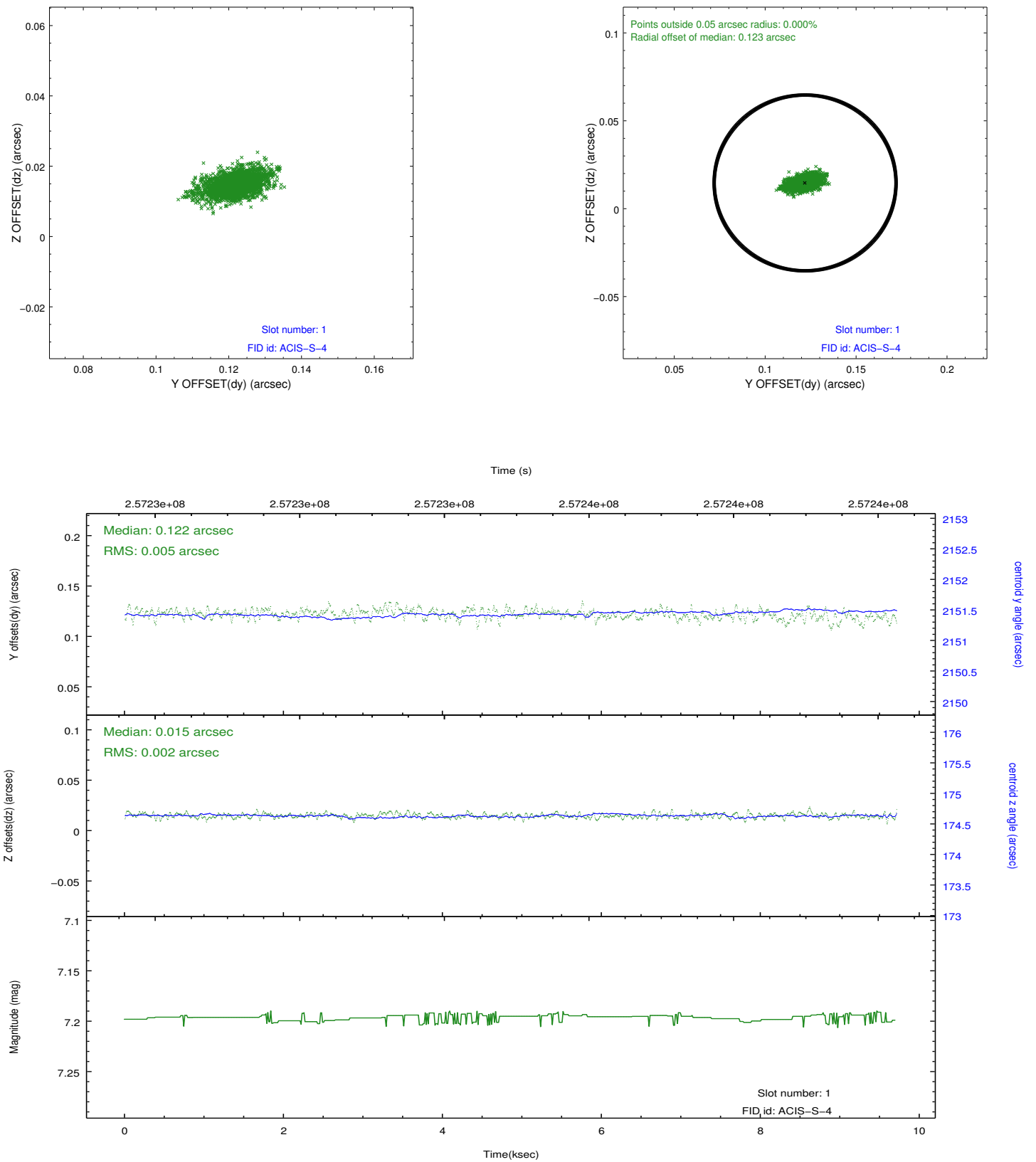


2.5 FID Slots

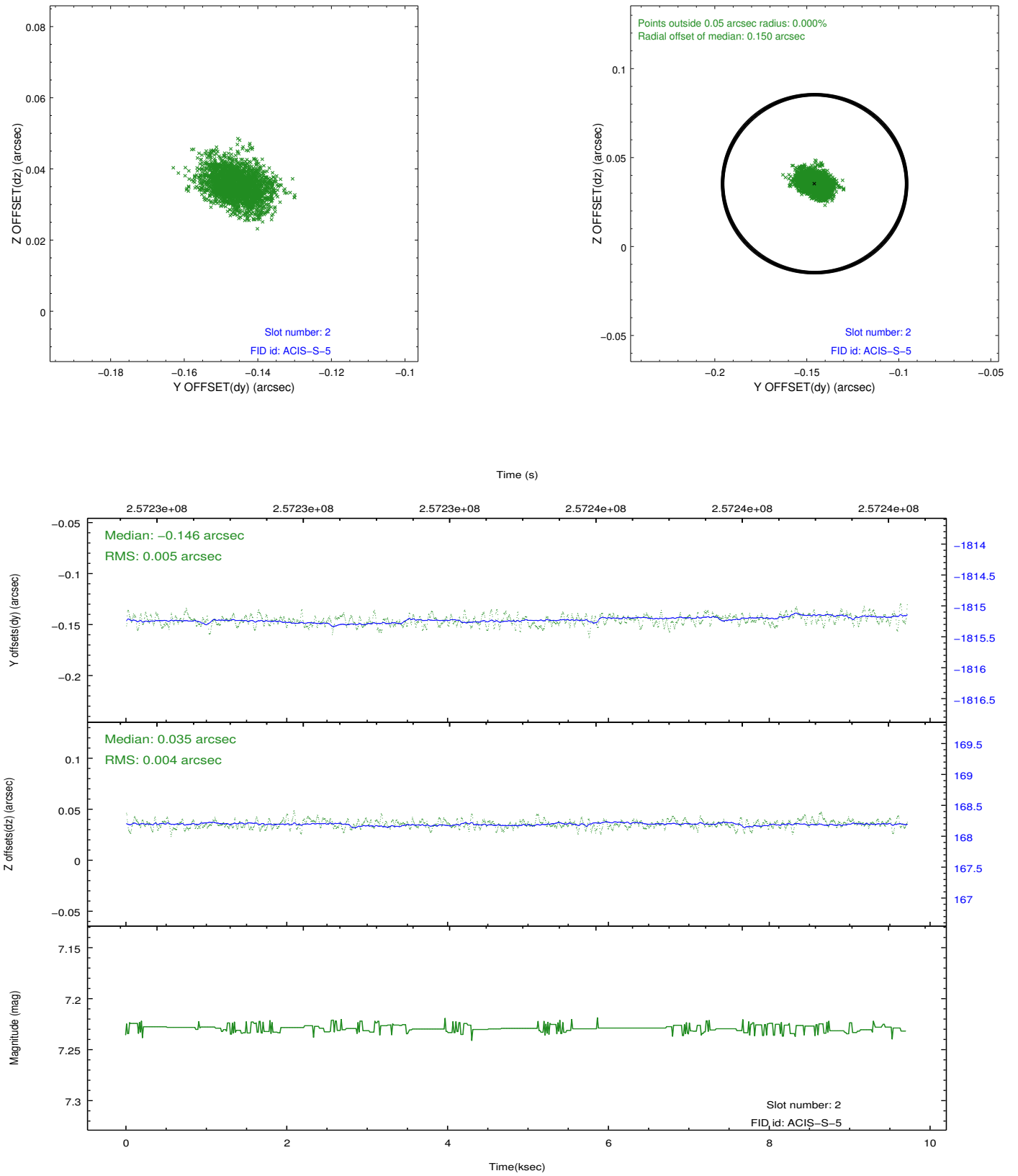
2.5.1 Slot 0



2.5.2 Slot 1



2.5.3 Slot 2



A Summary

A.1 Status

V&V Scientist	Jen Lauer
V&V Date (YYYY-MM-DD)	2012.03.27
V&V Edition	1
V&V Disposition and Status	OK
V&V Charge Time	9.27999996

A.2 Comments