

V&V Reference Report

L2 ASCDS Version : 8.4.5

Observation 62064 - L2 Version 5
Chandra X-Ray Center

L2 Processing Date : Aug 26 2012

Contents

1	Front	2
2	OBI	3
2.1	OBI	3
2.1.1	Images	3
2.1.2	Bias	3
2.1.3	Parameters	4
2.1.4	Events	4
2.2	Compared Parameters	5
2.3	Star Slots	6
2.4	FID Slots	6
A	Summary	7
A.1	Status	7
A.2	Comments	7

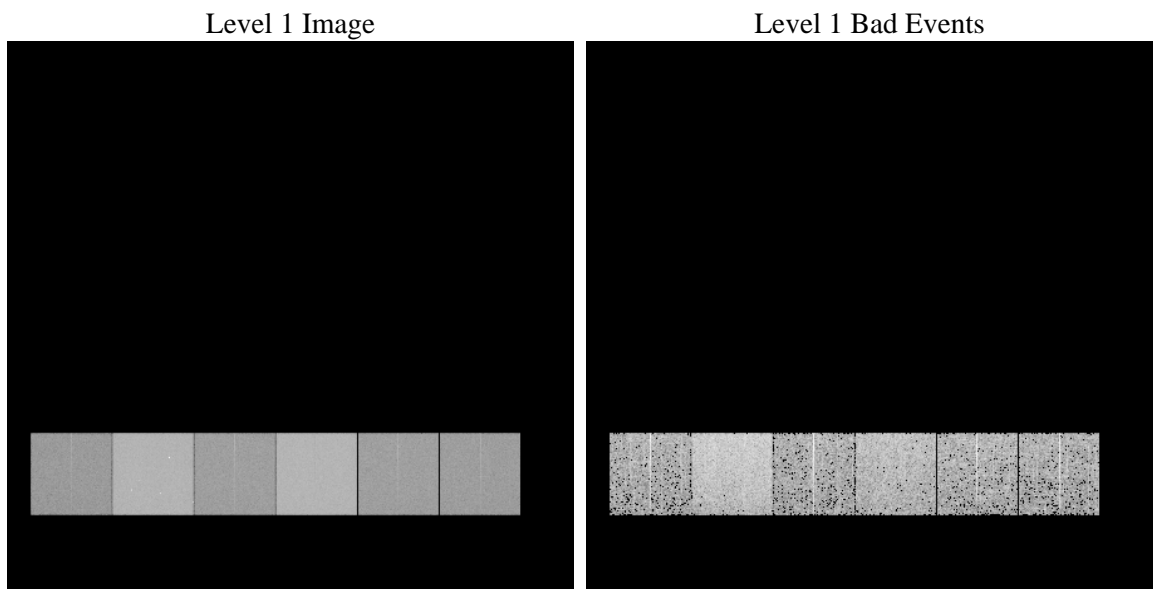
1 Front

seq_num	 	Sequence number
obs_id	62064	Observation id
title	ACIS-456789 diagnostics	Proposal title
observer	CHANDRA engineering request/realtime commanding	Principal investig
object	 	Source name
dtcycle	0	
cycle	P	events from which exps? Prim/Second/Both
ra_targ	0.0	Observer's specified target RA [deg]
dec_targ	0.0	Observer's specified target Dec [deg]
ra_nom	16.609229435803	Nominal RA [deg]
dec_nom	-60.843808788777	Nominal Dec [deg]
roll_nom	153.22599943775	Nominal Roll [deg]
revision	5	Processing version of data
ontime	4023.8646131605	Sum of GTIs [s]
livetime	3972.9120165483	Livetime [s]
ontime4	1596.3377334327	Sum of GTIs [s]
ontime5	4351.2038495988	Sum of GTIs [s]
ontime6	1788.4000174552	Sum of GTIs [s]
ontime7	4023.8646131605	Sum of GTIs [s]
ontime8	1811.1693774015	Sum of GTIs [s]
ontime9	1755.8664975464	Sum of GTIs [s]
l2events	1233069	Number of level 2 events

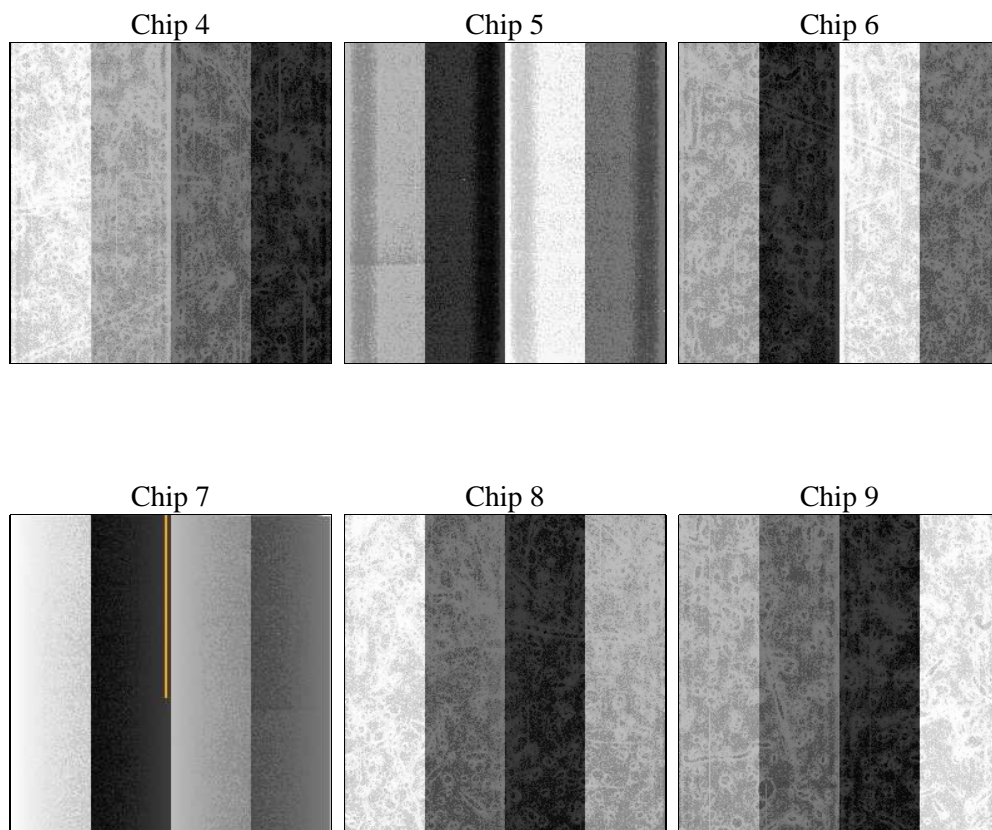
2 OBI

2.1 OBI

2.1.1 Images



2.1.2 Bias



2.1.3 Parameters

obi_num	0	Obi number	sched_exp_time	0.0	[s] Scheduled observation exposure time
ascdsver	8.4.5	Processing system revision	ontime	4023.8646131605	Sum of GTIs [s]
caldsver	4.5.1.1	 	ontime4	1596.3377334327	Sum of GTIs [s]
date	2012-08-26T23:54:04	Date and time of file creation	ontime5	4351.2038495988	Sum of GTIs [s]
revision	5	Processing version of data	ontime6	1788.4000174552	Sum of GTIs [s]
			ontime7	4023.8646131605	Sum of GTIs [s]
			ontime8	1811.1693774015	Sum of GTIs [s]
			ontime9	1755.8664975464	Sum of GTIs [s]
			l1events	1408177	Number of level 1 events

2.1.4 Events

	ccd 4	ccd 5	ccd 6	ccd 7	ccd 8	ccd 9		ccd 4	ccd 5	ccd 6	ccd 7	ccd 8	ccd 9
level 1 events	148089	365116	175182	376138	178057	165595	grade 0 events	74741	89442	86993	91655	88055	81859
rejected events	16661	32766	16351	22187	18062	16261		50%	24%	49%	24%	49%	49%
rejected %	11%	8%	9%	5%	10%	9%	grade 1 events	480	284	502	235	512	479
								0%	0%	0%	0%	0%	0%
							grade 2 events	22890	111449	27289	79222	28051	26390
								15%	30%	15%	21%	15%	15%
							grade 3 events	8025	23403	9754	36368	10054	9287
								5%	6%	5%	9%	5%	5%
							grade 4 events	8121	22938	9842	35843	10187	9305
								5%	6%	5%	9%	5%	5%
							grade 5 events	1162	6956	1347	4867	1363	1332
								0%	1%	0%	1%	0%	0%
							grade 6 events	17651	85118	24953	110863	23648	22493
								11%	23%	14%	29%	13%	13%
							grade 7 events	15019	25526	14502	17085	16187	14450
								10%	6%	8%	4%	9%	8%

2.2 Compared Parameters

Parameter	Planned	Actual	Parameter	Planned	Actual
Instrument	ACIS	ACIS	Obspar format version number	7	7
Detector	ACIS-456789	ACIS-456789	Obspar file type	PREDICTED	ACTUAL
Grating	NONE	NONE	Obspar update status	NONE	UPDATED
Data mode	FAINT	FAINT	On-chip summing requested	N	N
Observation mode	SECONDARY	SECONDARY	Subarray requested	NONE	NONE
[deg] Pointing RA	0	16.6092294358026	Alternating exposures requested	N	N
[deg] Pointing Dec	0	-60.84380878877684	[s] Primary exposure time	3.2	3.2
[deg] Pointing Roll	0.0	153.2259994377461			
[mm] SIM focus pos	-0.684267	-0.6828225247311905			
[mm] SIM defocus	0	0.8505141146731063			
[mm] SIM translation stage pos	-190.132523	250.466033080201			
[mm] SIM translation stage offset	0	-0.01005468664627074			
[s] Observation start time (MET)	74009398.98204	74009398.21357299			
Observation start date	2000-05-06T14:09:59	2000-05-06T14:09:58			
[s] Observation end time (MET)	74053490.38365901	74053489.61519501			
Observation end date	2000-05-07T02:24:50	2000-05-07T02:24:49			
Read mode	TIMED	TIMED			

2.3 Star Slots

2.4 FID Slots

A Summary

A.1 Status

V&V Scientist	Jen Lauer
V&V Date (YYYY-MM-DD)	2012.08.29
V&V Edition	1
V&V Disposition and Status	OK
V&V Charge Time	4.0238646131605

A.2 Comments