

V&V Reference Report

L2 ASCDS Version : 8.4.5

Observation 62024 - L2 Version 5
Chandra X-Ray Center

L2 Processing Date : Aug 29 2012

Contents

1	Front	2
2	OBI	3
2.1	OBI	3
2.1.1	Images	3
2.1.2	Bias	3
2.1.3	Parameters	4
2.1.4	Events	4
2.2	Compared Parameters	5
2.3	Star Slots	6
2.4	FID Slots	6
A	Summary	7
A.1	Status	7
A.2	Comments	7

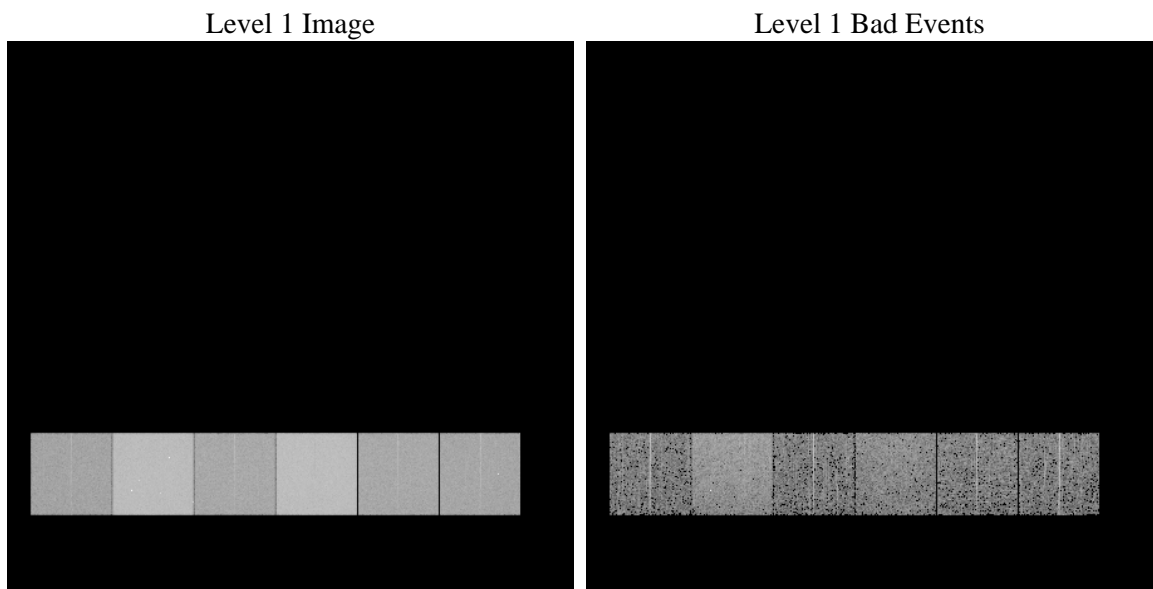
1 Front

seq_num	 	Sequence number
obs_id	62024	Observation id
title	ACIS-456789 diagnostics	Proposal title
observer	CHANDRA engineering request/realtime commanding	Principal investig
object	 	Source name
dtcycle	0	
cycle	P	events from which exps? Prim/Second/Both
ra_targ	0.0	Observer's specified target RA [deg]
dec_targ	0.0	Observer's specified target Dec [deg]
ra_nom	90.14328599899	Nominal RA [deg]
dec_nom	-70.157776048739	Nominal Dec [deg]
roll_nom	185.72290665962	Nominal Roll [deg]
revision	5	Processing version of data
ontime	4129.0695447028	Sum of GTIs [s]
livetime	4076.7847799006	Livetime [s]
ontime4	1701.5444101095	Sum of GTIs [s]
ontime5	4411.0337722003	Sum of GTIs [s]
ontime6	1928.417129755	Sum of GTIs [s]
ontime7	4129.0695447028	Sum of GTIs [s]
ontime8	1908.9708299637	Sum of GTIs [s]
ontime9	1825.7500146627	Sum of GTIs [s]
l2events	1231243	Number of level 2 events

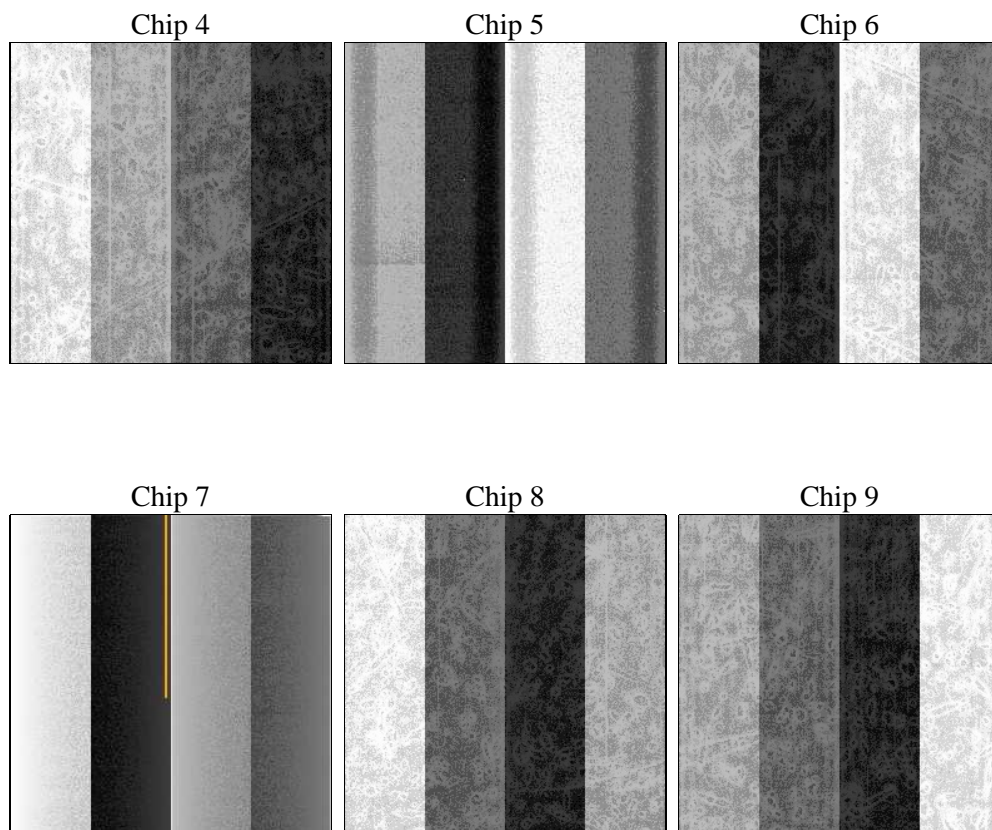
2 OBI

2.1 OBI

2.1.1 Images



2.1.2 Bias



2.1.3 Parameters

obi_num	0	Obi number	sched_exp_time	0.0	[s] Scheduled observation exposure time
ascdsver	8.4.5	Processing system revision	ontime	4129.0695447028	Sum of GTIs [s]
caldsver	4.5.1.1	 	ontime4	1701.5444101095	Sum of GTIs [s]
date	2012-08-29T08:03:27	Date and time of file creation	ontime5	4411.0337722003	Sum of GTIs [s]
revision	5	Processing version of data	ontime6	1928.417129755	Sum of GTIs [s]
			ontime7	4129.0695447028	Sum of GTIs [s]
			ontime8	1908.9708299637	Sum of GTIs [s]
			ontime9	1825.7500146627	Sum of GTIs [s]
			l1events	1402737	Number of level 1 events

2.1.4 Events

	ccd 4	ccd 5	ccd 6	ccd 7	ccd 8	ccd 9		ccd 4	ccd 5	ccd 6	ccd 7	ccd 8	ccd 9
level 1 events	151772	354841	181606	367628	180061	166829	grade 0 events	76956	85220	91094	90280	90377	82720
rejected events	16131	32199	16001	20144	17074	16420		50%	24%	50%	24%	50%	49%
rejected %	10%	9%	8%	5%	9%	9%	grade 1 events	438	562	483	242	457	447
								0%	0%	0%	0%	0%	0%
							grade 2 events	23904	109884	28658	77701	28844	26723
								15%	30%	15%	21%	16%	16%
							grade 3 events	8305	22347	9996	36005	10161	9515
								5%	6%	5%	9%	5%	5%
							grade 4 events	8441	22206	10093	35906	10167	9337
								5%	6%	5%	9%	5%	5%
							grade 5 events	1094	6795	1262	4835	1419	1210
								0%	1%	0%	1%	0%	0%
							grade 6 events	18035	82985	25764	107592	23438	22433
								11%	23%	14%	29%	13%	13%
							grade 7 events	14599	24842	14256	15067	15198	14444
								9%	7%	7%	4%	8%	8%

2.2 Compared Parameters

Parameter	Planned	Actual	Parameter	Planned	Actual
Instrument	ACIS	ACIS	Obspar format version number	7	7
Detector	ACIS-456789	ACIS-456789	Obspar file type	PREDICTED	ACTUAL
Grating	NONE	NONE	Obspar update status	NONE	UPDATED
Data mode	FAINT	FAINT	On-chip summing requested	N	N
Observation mode	SECONDARY	SECONDARY	Subarray requested	NONE	NONE
[deg] Pointing RA	0	90.1432859989896	Alternating exposures requested	N	N
[deg] Pointing Dec	0	-70.15777604873931	[s] Primary exposure time	3.2	3.2
[deg] Pointing Roll	0.0	185.7229066596221			
[mm] SIM focus pos	-0.684267	-0.6828225247311905			
[mm] SIM defocus	0	0.8505141146731063			
[mm] SIM translation stage pos	-190.132523	250.466033080201			
[mm] SIM translation stage offset	0	-0.01005468664627074			
[s] Observation start time (MET)	77437724.808116	77437724.039648			
Observation start date	2000-06-15T06:28:45	2000-06-15T06:28:44			
[s] Observation end time (MET)	77481031.059708	77481030.291244			
Observation end date	2000-06-15T18:30:31	2000-06-15T18:30:30			
Read mode	TIMED	TIMED			

2.3 Star Slots

2.4 FID Slots

A Summary

A.1 Status

V&V Scientist	Jen Lauer
V&V Date (YYYY-MM-DD)	2012.08.31
V&V Edition	1
V&V Disposition and Status	OK
V&V Charge Time	4.1290695447028

A.2 Comments