

V&V Reference Report

L2 ASCDS Version : 7.6.7.1

Observation 6194 - L2 Version 3
Chandra X-Ray Center

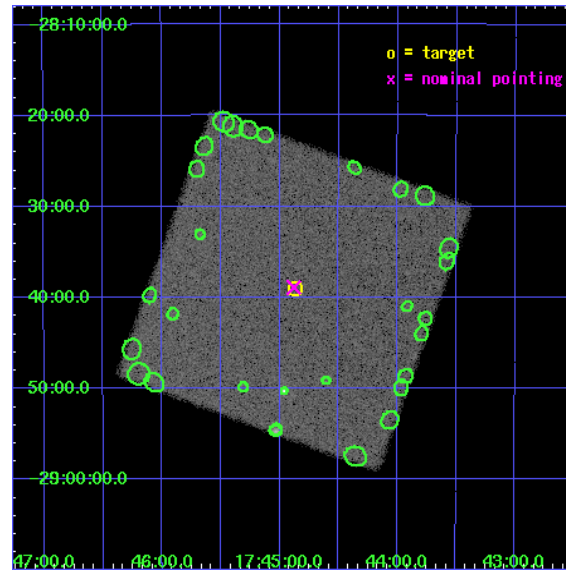
L2 Processing Date : Nov 24 2007

Contents

1	Front	2
2	OBI	3
2.1	OBI	3
2.1.1	Images	3
2.1.2	Parameters	4
2.1.3	Events	4
2.2	Compared Parameters	5
2.3	Aspect	6
2.4	Star Slots	9
2.4.1	Slot 3	9
2.4.2	Slot 4	10
2.4.3	Slot 5	11
2.4.4	Slot 6	12
2.4.5	Slot 7	13
2.5	FID Slots	14
2.5.1	Slot 0	14
2.5.2	Slot 1	15
2.5.3	Slot 2	16
3	Point Sources	17
A	Summary	18
A.1	Status	18
A.2	Comments	18

1 Front

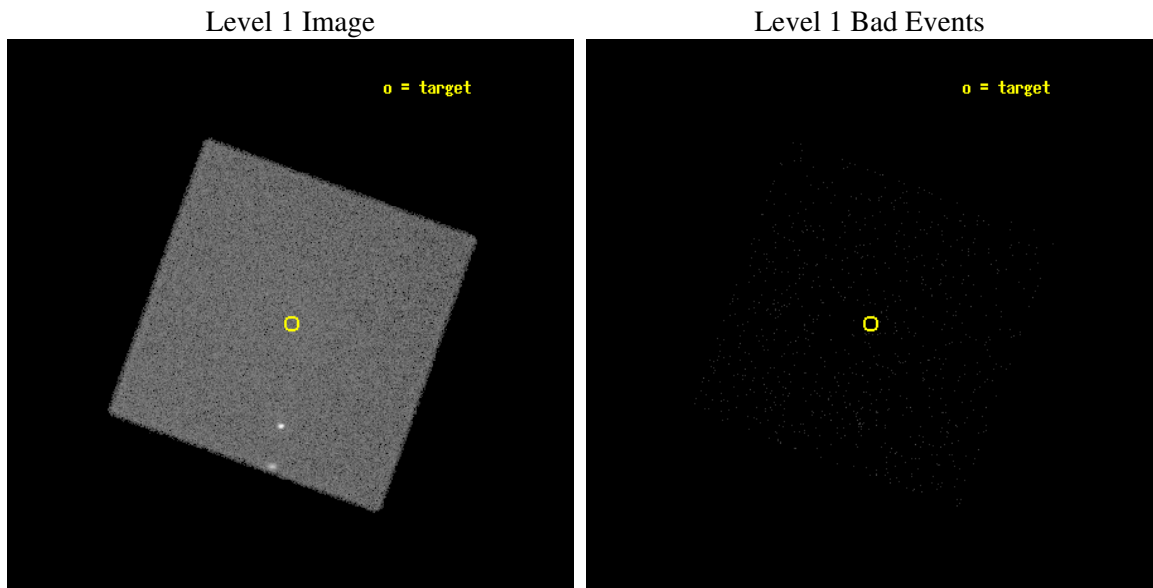
seq_num	400454
obs_id	6194
title	Monitoring observations of the Galactic Center region
observer	Dr. Rudy Wijnands
object	GC-7
ra_targ	266.21625
dec_targ	-28.651389
ra_nom	266.21966562416
dec_nom	-28.648776353559
roll_nom	64.902278181445
revision	3
ontime	5177.5314862728
livetime	5140.9953551803
l2events	197129



2 OBI

2.1 OBI

2.1.1 Images



2.1.2 Parameters

obi_num	0
ascdsver	7.6.11.2
caldbver	3.4.1
date	2007-11-24T14:40:42
revision	3

sched_exp_time	5000.000000
ontime	5177.5314862728
l1events	313812

2.1.3 Events

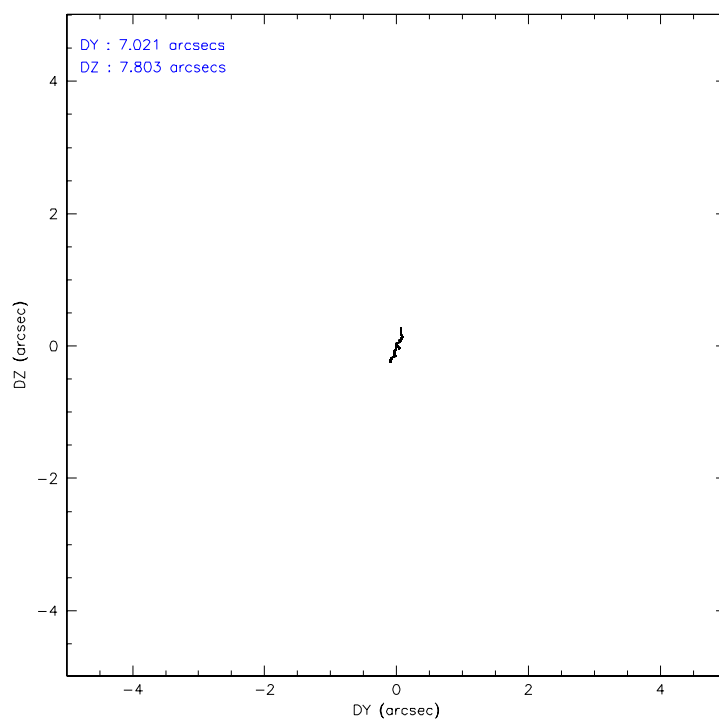
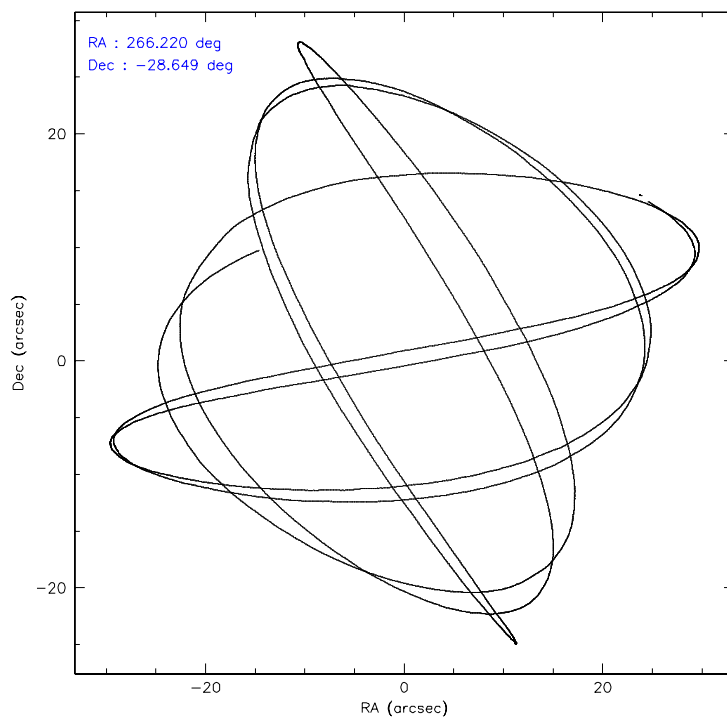
Level 1 Events

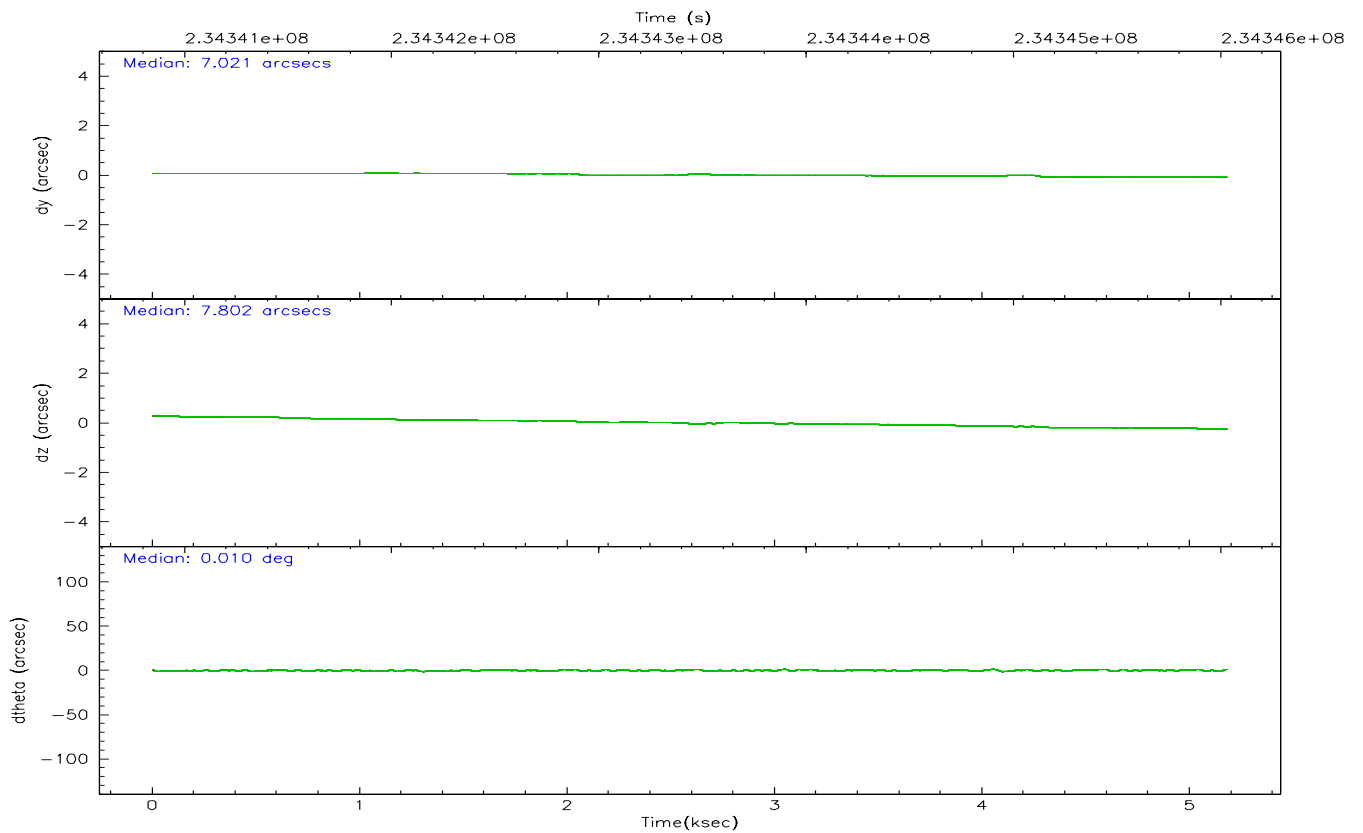
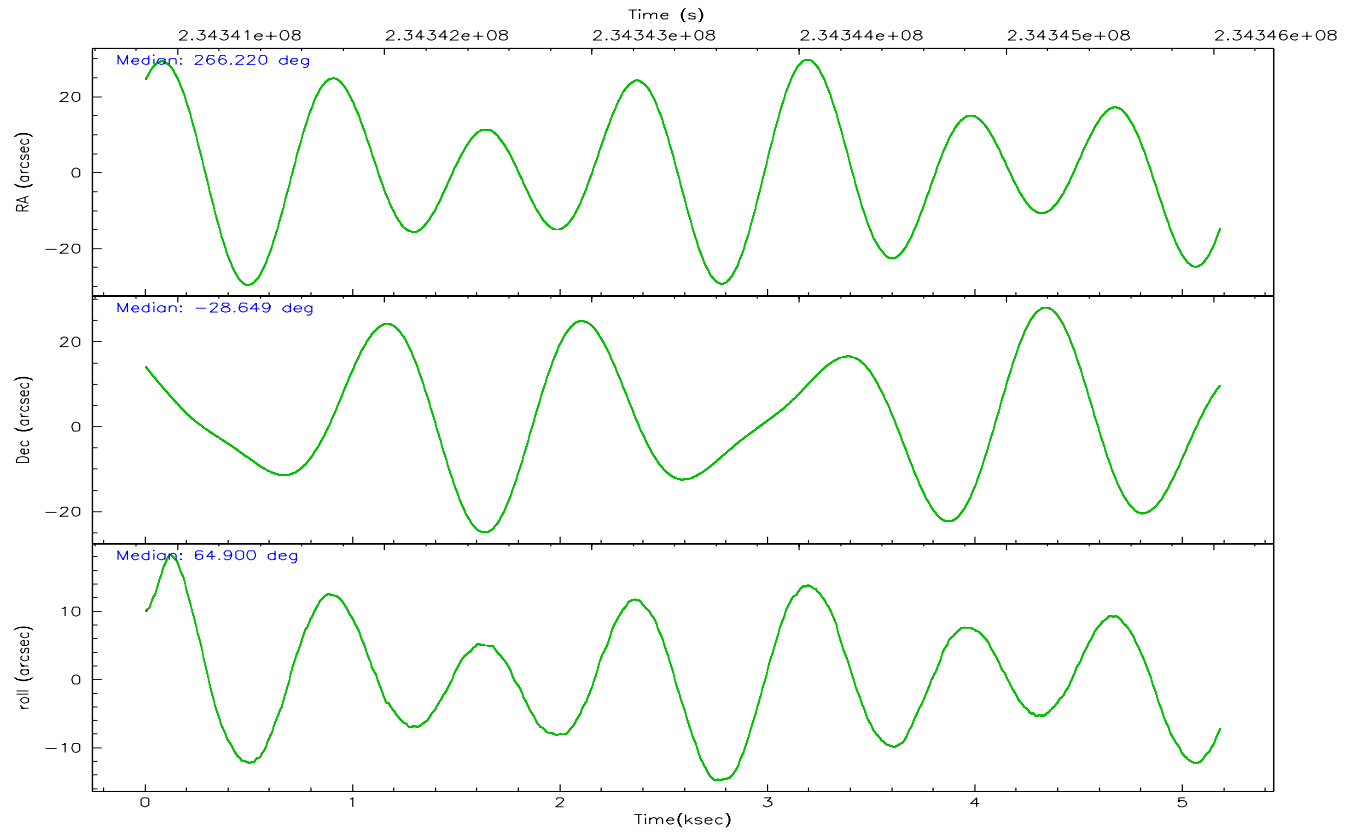
	segment 0
level 1 events	313812
rejected events	21010
rejected %	6%

2.2 Compared Parameters

Parameter	Planned	Actual	Parameter	Planned	Actual
Instrument	HRC	HRC	Obspar format version number	6	6
Detector	HRC-I	HRC-I	Obspar file type	PREDICTED	ACTUAL
Grating	NONE	NONE	Obspar update status	NONE	UPDATED
Data mode	OBSERVING	OBSERVING			
Observation mode	POINTING	POINTING			
Pointing RA	266.223121	266.2196656241641			
Pointing Dec	-28.675533	-28.64877635355858			
Pointing Roll	64.999416	64.90227818144535			
SIM focus pos (mm)	-1.040293	-1.038866356238299			
SIM defocus (mm)	0	0.001426264420575141			
SIM translation stage pos (mm)	126.985494	126.9829799899862			
SIM translation stage offset (mm)	0	0.002508901615314585			
Observation start time	234341032.184000	234340656.19548			
Observation start date	2005-06-05T06:42:48	2005-06-05T06:37:36			
Observation end time	234346032.184000	234346204.52073			
Observation end date	2005-06-05T08:06:08	2005-06-05T08:10:04			

2.3 Aspect



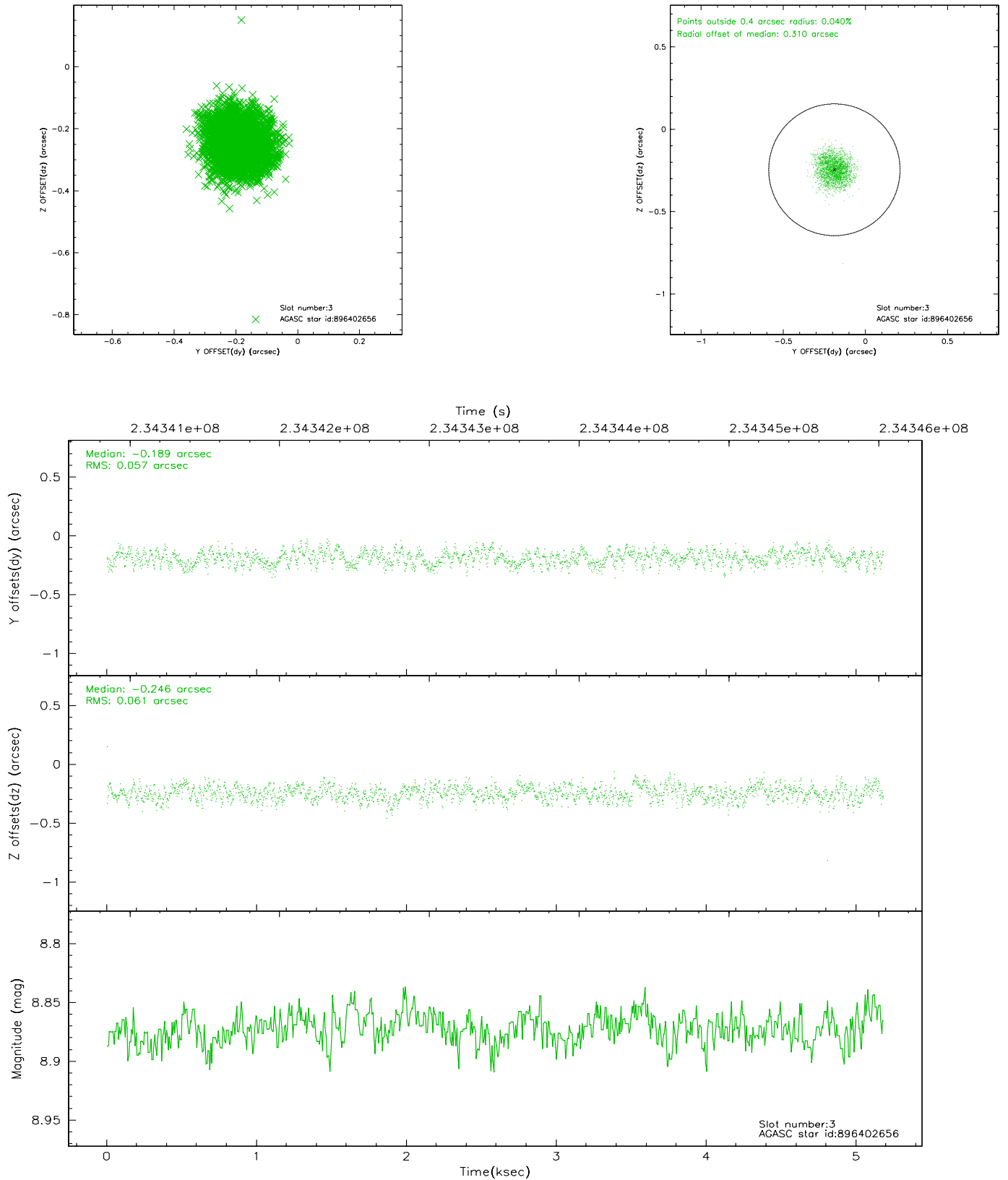


Slot Statistics

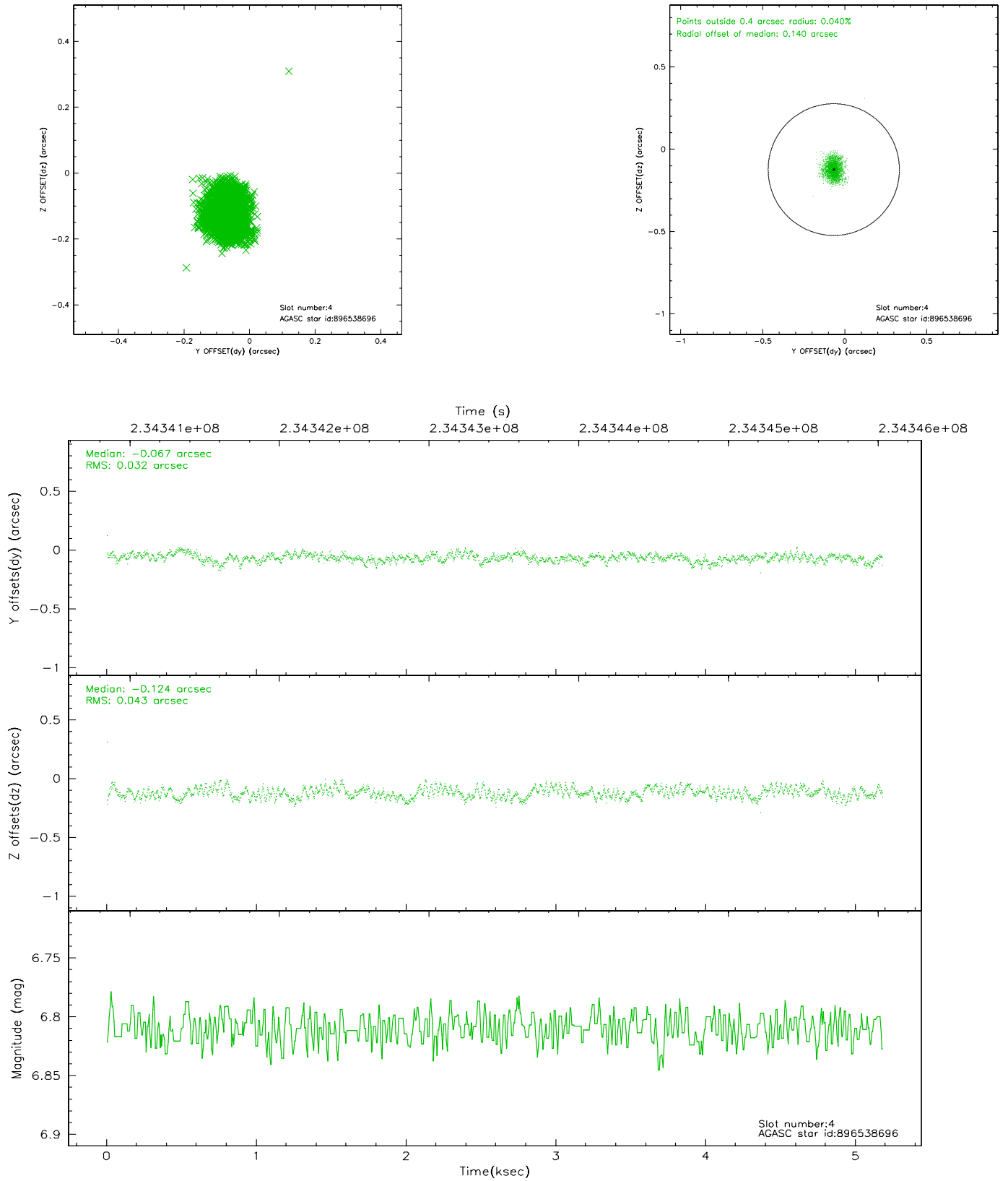
slot	status	id	mag	n_pts	med_dy	med_dz	dr1	dr2	ra	dec	mean_y	mean_z
0	FID	HRC-I-2	7.04	1264	0.077	-0.067	0.007	0.013	0.000000	0.000000	850.07	-1297.33
1	FID	HRC-I-3	7.08	1264	-0.077	0.013	0.006	0.010	0.000000	0.000000	-1190.49	1007.89
2	FID	HRC-I-4	7.04	1264	0.118	-0.032	0.007	0.011	0.000000	0.000000	1279.37	1007.23
3	GUIDE	896402656	8.87	2524	-0.189	-0.246	0.091	0.136	265.739192	-28.230753	800.27	2066.34
4	GUIDE	896538696	6.81	2527	-0.067	-0.124	0.057	0.089	266.298470	-28.325572	1243.75	316.81
5	GUIDE	896539744	8.33	2527	0.028	0.070	0.061	0.098	266.154264	-28.178023	1532.16	955.27
6	GUIDE	896538920	8.91	2527	0.146	0.161	0.084	0.137	266.278728	-29.143592	-1451.64	-870.11
7	GUIDE	896533888	7.02	2526	0.086	0.140	0.054	0.085	266.666434	-29.392757	-1754.37	-2352.86

2.4 Star Slots

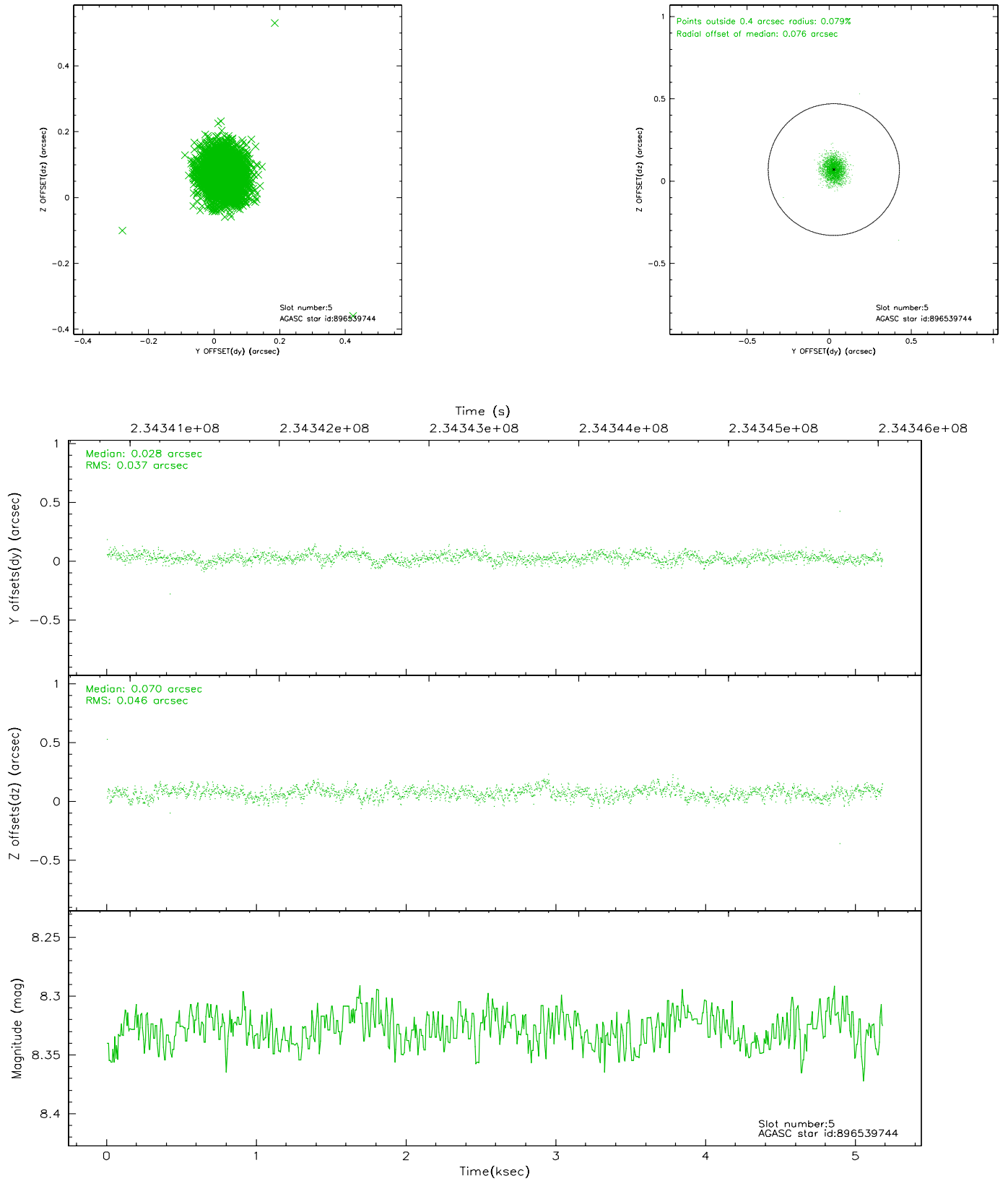
2.4.1 Slot 3



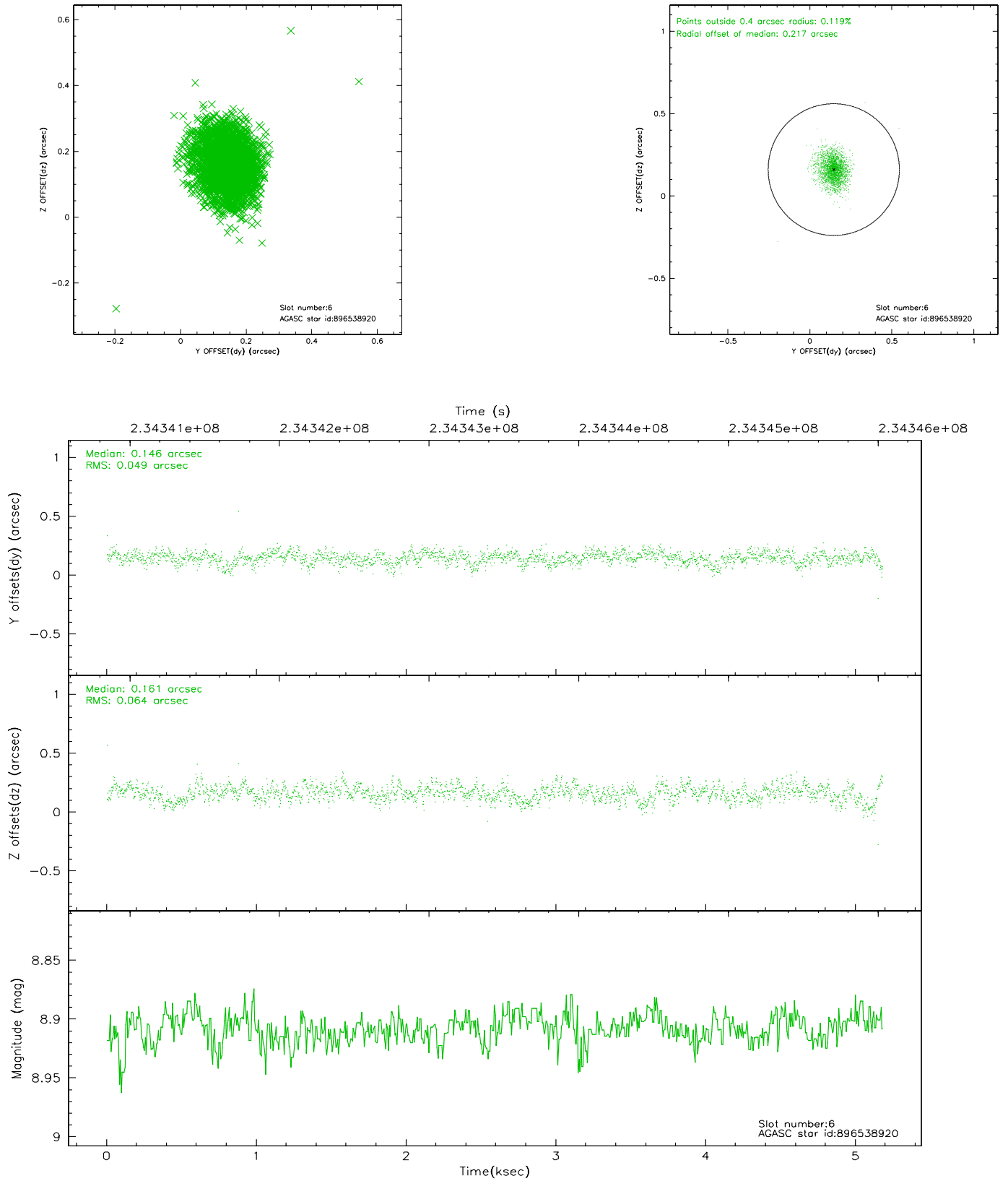
2.4.2 Slot 4



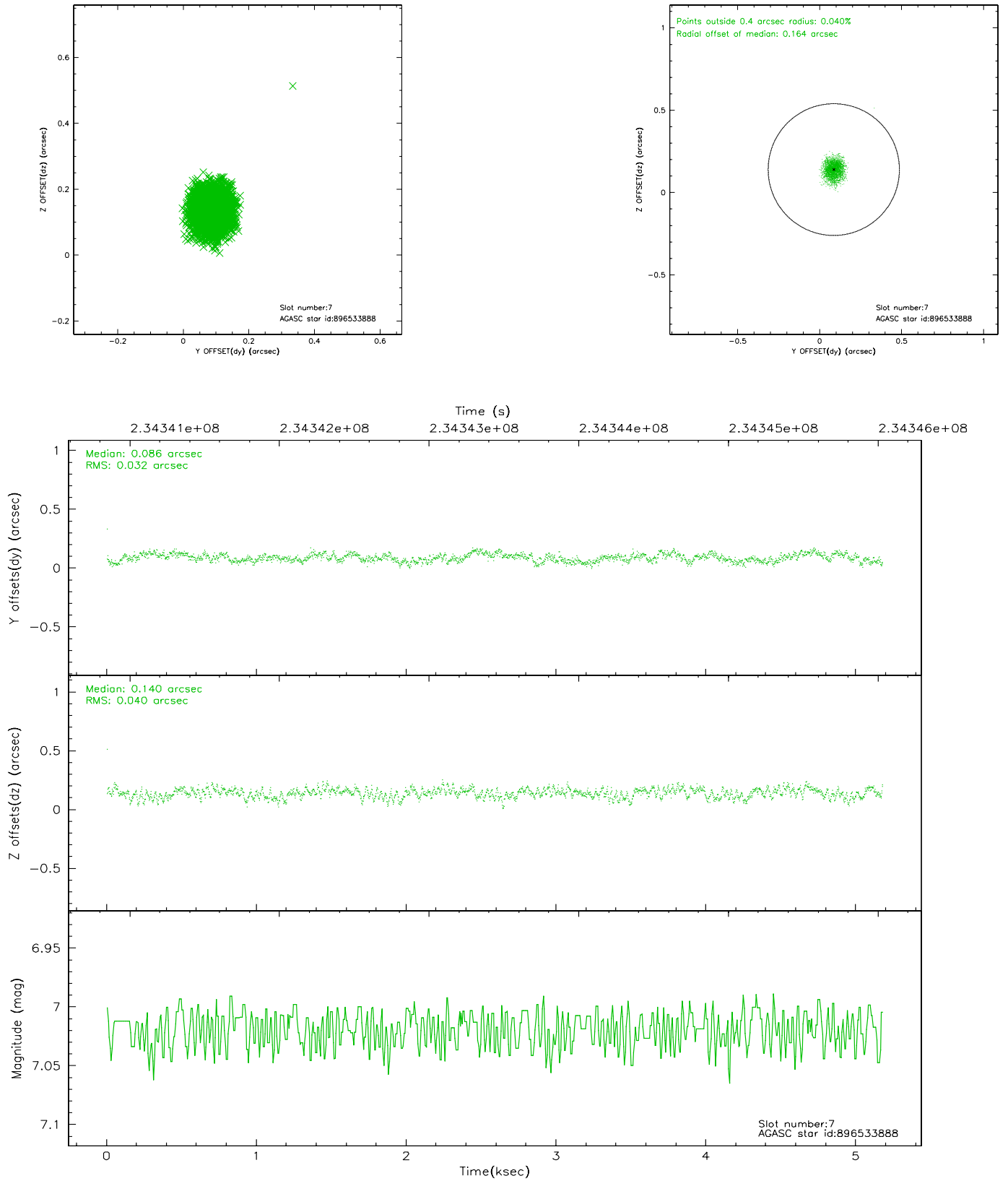
2.4.3 Slot 5



2.4.4 Slot 6

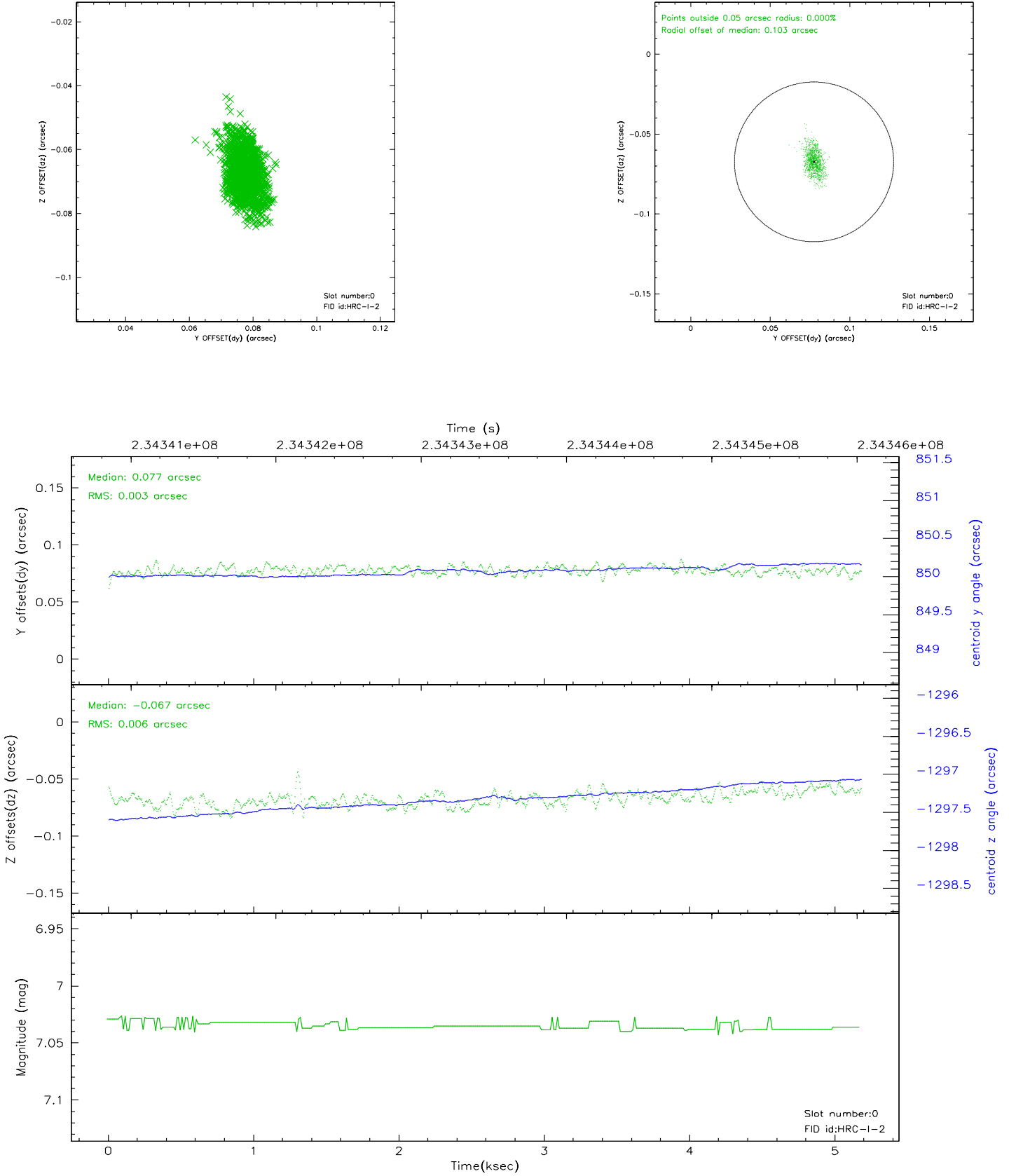


2.4.5 Slot 7

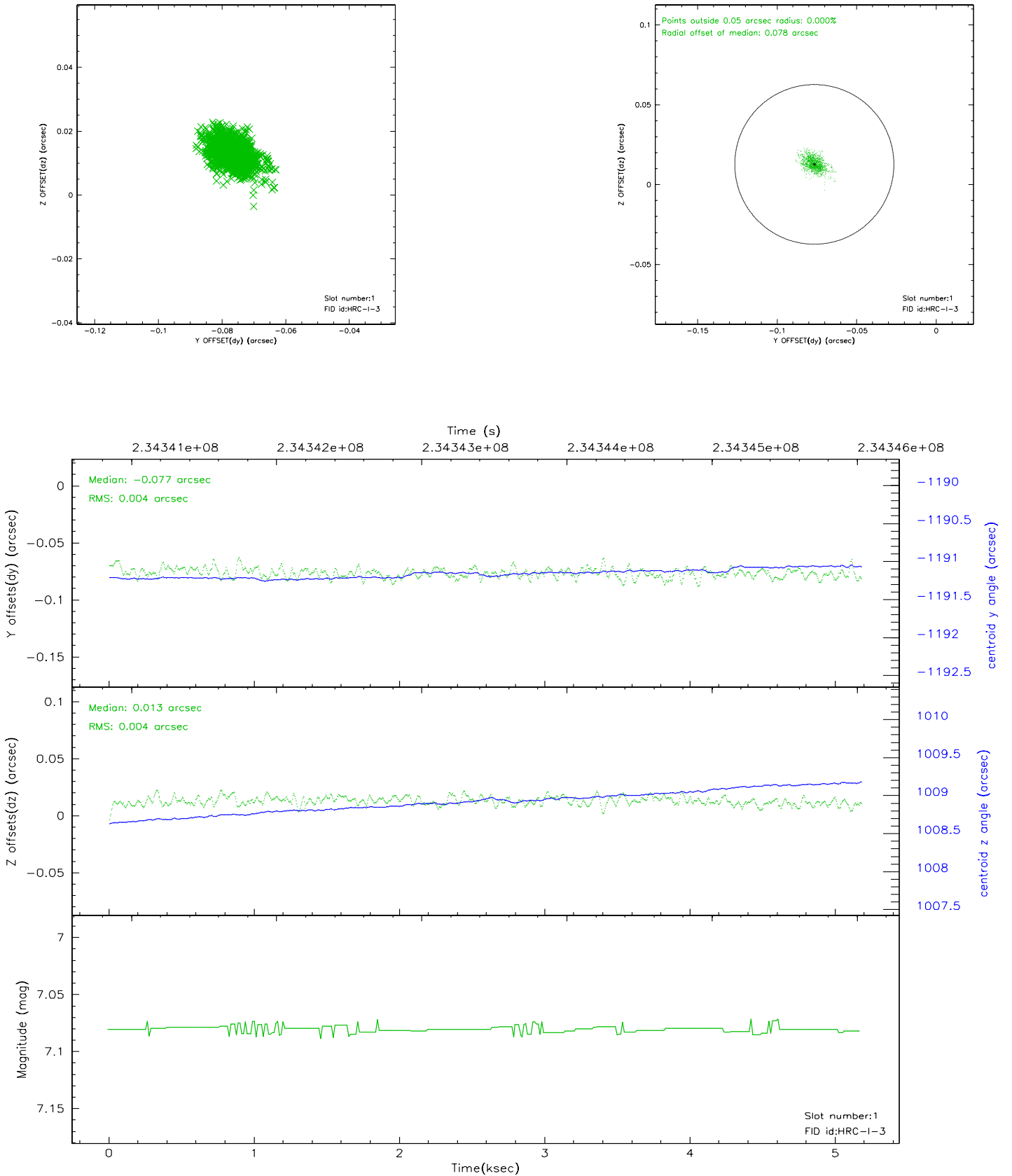


2.5 FID Slots

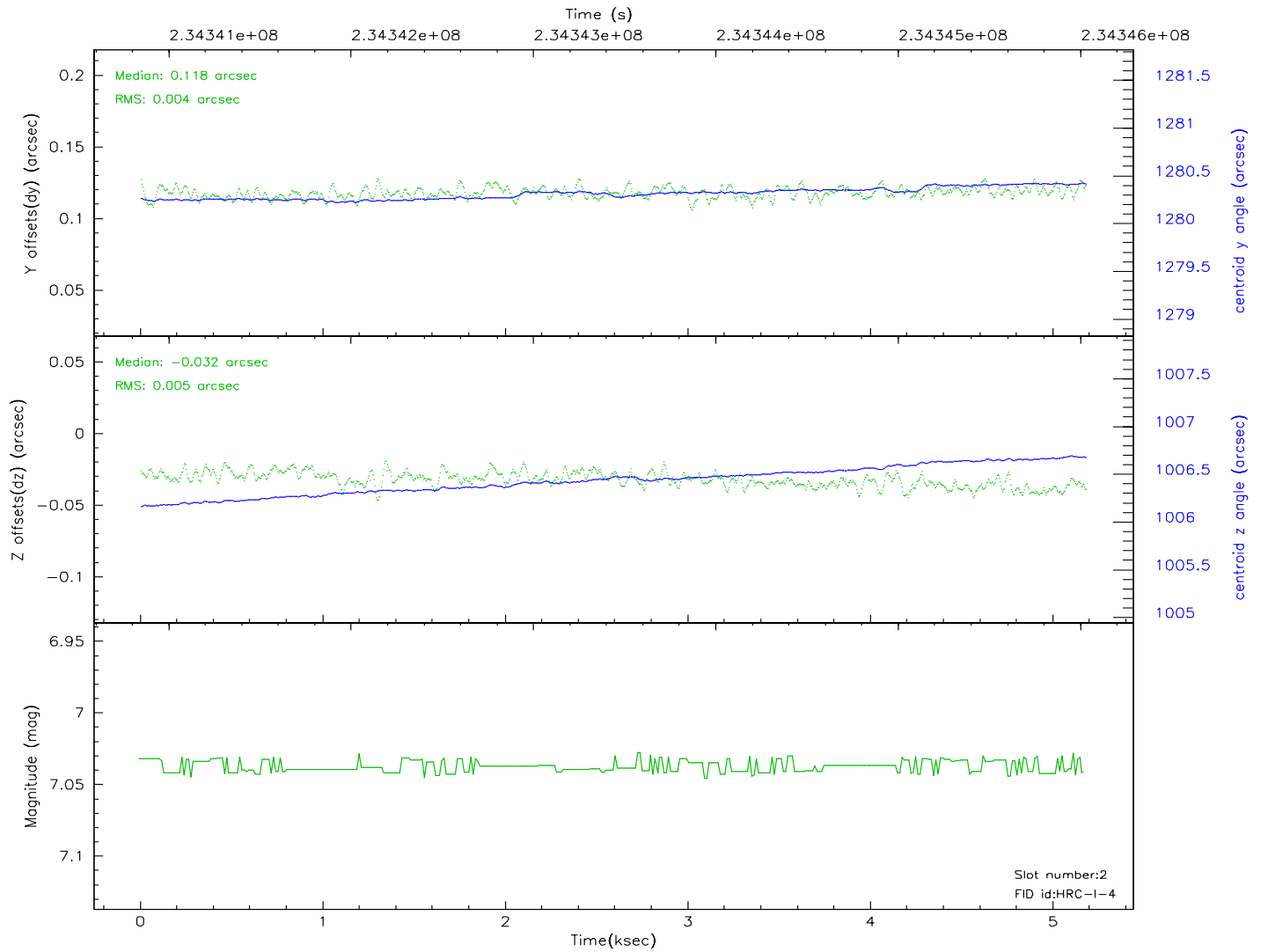
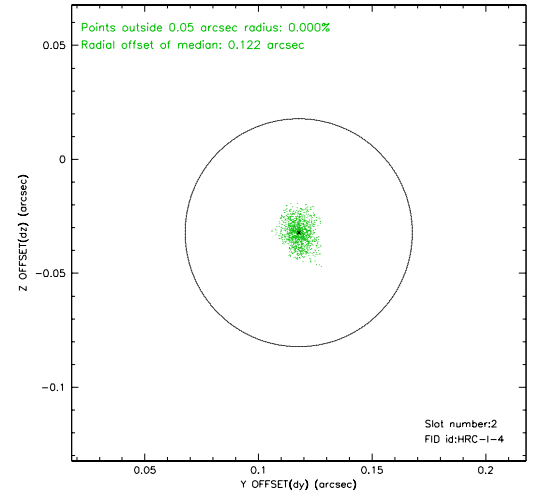
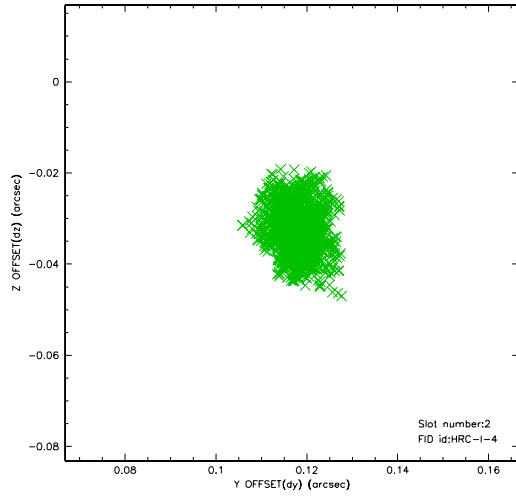
2.5.1 Slot 0



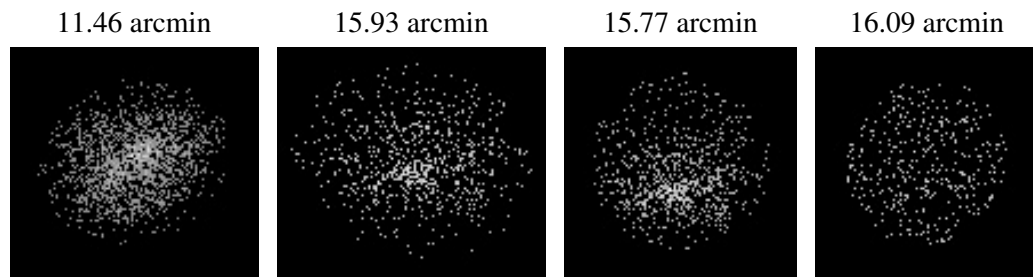
2.5.2 Slot 1



2.5.3 Slot 2



3 Point Sources



A Summary

A.1 Status

V&V Scientist	Beth Sundheim
V&V Date (YYYY-MM-DD)	2007.12.06
V&V Edition	1
V&V Disposition and Status	OK
V&V Charge Time	5.177531

A.2 Comments

The current observation has been reprocessed as part of Repro III ('C' supplement) the purpose of which is to update all HRC-I ObsIDs since Jan 2000 to the latest calibrations available for that configuration. Specifically, we are updating the DEGAP solution and the Gain Maps applied. For more information see the Repro IIIC web page at:

<http://asc.harvard.edu/cda/repro3.html#IIIC>

and the associated links.