

# V&V Reference Report

## L2 ASCDS Version : 8.4.5

Observation 61864 - L2 Version 3  
Chandra X-Ray Center

L2 Processing Date : Sep 3 2012

## Contents

<b>1</b>	<b>Front</b>	<b>2</b>
<b>2</b>	<b>OBI</b>	<b>3</b>
2.1	OBI . . . . .	3
2.1.1	Images . . . . .	3
2.1.2	Bias . . . . .	3
2.1.3	Parameters . . . . .	4
2.1.4	Events . . . . .	4
2.2	Compared Parameters . . . . .	5
2.3	Star Slots . . . . .	6
2.4	FID Slots . . . . .	6
<b>A</b>	<b>Summary</b>	<b>7</b>
A.1	Status . . . . .	7
A.2	Comments . . . . .	7

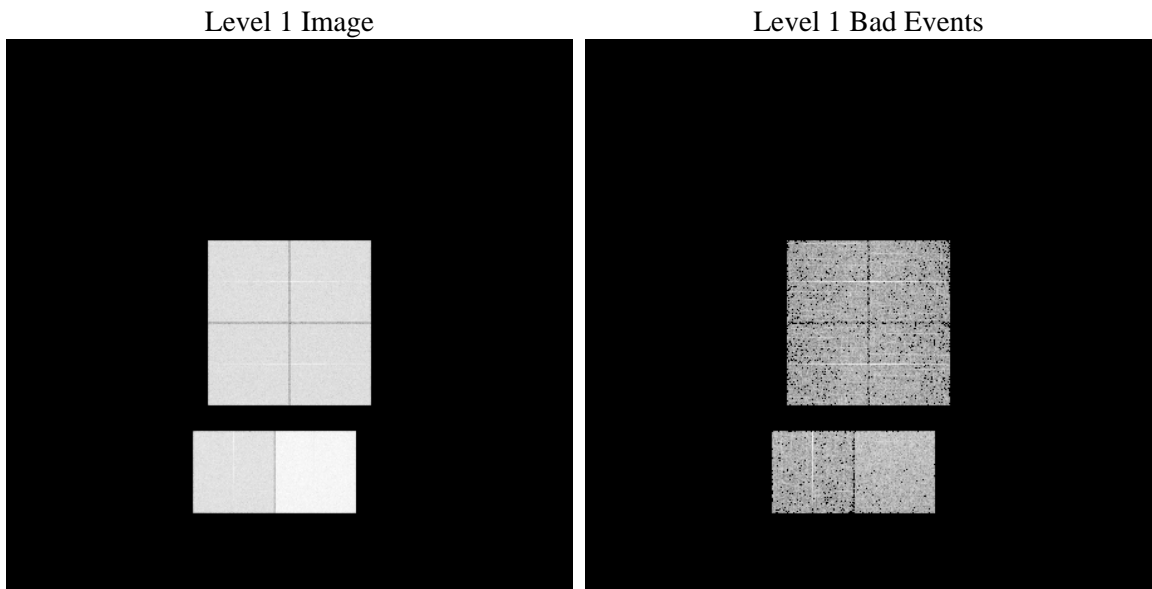
# 1 Front

seq_num	&#160	Sequence number
obs_id	61864	Observation id
title	ACIS-012367 diagnostics	Proposal title
observer	CHANDRA engineering request/realtime commanding	Principal investig
object	&#160	Source name
dtcycle	0	&#160
cycle	P	events from which exps? Prim/Second/Both
ra_targ	0.0	Observer's specified target RA [deg]
dec_targ	0.0	Observer's specified target Dec [deg]
ra_nom	176.35502241821	Nominal RA [deg]
dec_nom	56.517534407844	Nominal Dec [deg]
roll_nom	40.698708899431	Nominal Roll [deg]
revision	3	Processing version of data
ontime	5486.8118435144	Sum of GTIs [s]
livetime	5417.3345281904	Livetime [s]
ontime0	2387.1671539247	Sum of GTIs [s]
ontime1	2390.4490344971	Sum of GTIs [s]
ontime2	2280.2952231169	Sum of GTIs [s]
ontime3	2283.3719137162	Sum of GTIs [s]
ontime6	2533.1365350932	Sum of GTIs [s]
ontime7	5486.8118435144	Sum of GTIs [s]
l2events	1258844	Number of level 2 events

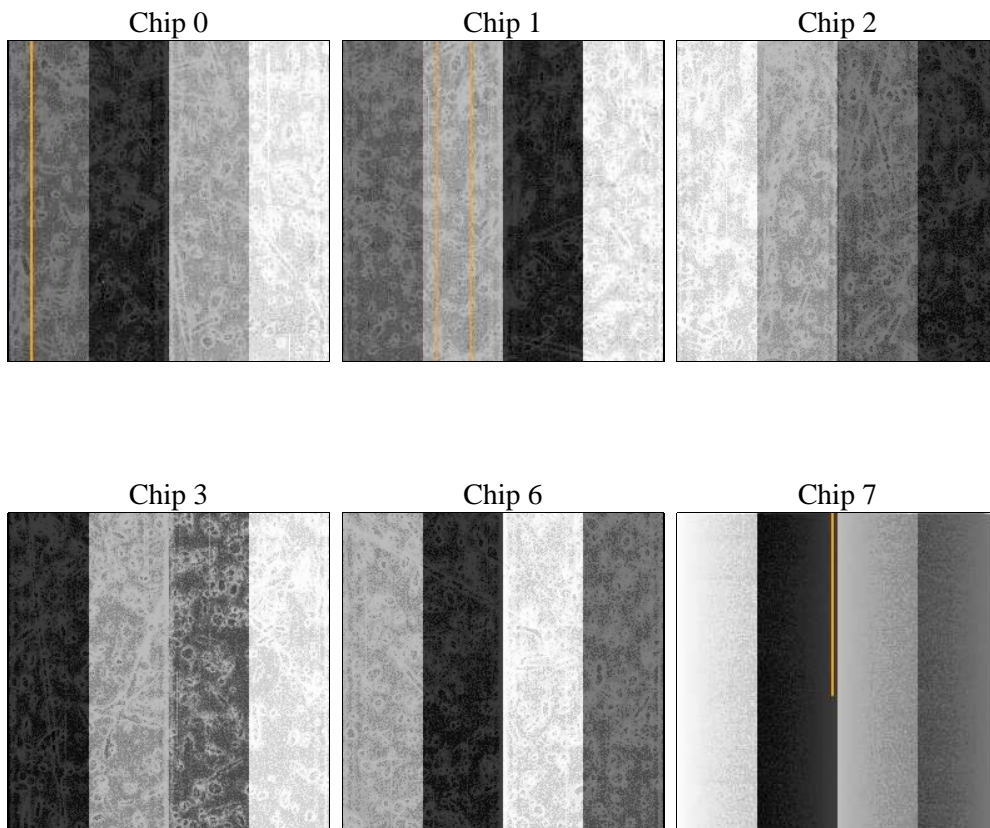
## 2 OBI

### 2.1 OBI

#### 2.1.1 Images



#### 2.1.2 Bias



### 2.1.3 Parameters

obi_num	0	Obi number	sched_exp_time	0.0	[s] Scheduled observation exposure time
ascdsver	8.4.5	Processing system revision	ontime	5486.8118435144	Sum of GTIs [s]
caldsver	4.5.1.1	&#160	ontime0	2387.1671539247	Sum of GTIs [s]
date	2012-09-03T05:21:54	Date and time of file creation	ontime1	2390.4490344971	Sum of GTIs [s]
revision	3	Processing version of data	ontime2	2280.2952231169	Sum of GTIs [s]
			ontime3	2283.3719137162	Sum of GTIs [s]
			ontime6	2533.1365350932	Sum of GTIs [s]
			ontime7	5486.8118435144	Sum of GTIs [s]
			l1events	1428680	Number of level 1 events

### 2.1.4 Events

	ccd 0	ccd 1	ccd 2	ccd 3	ccd 6	ccd 7		ccd 0	ccd 1	ccd 2	ccd 3	ccd 6	ccd 7
level 1 events	193702	194251	189867	189496	217262	444102	grade 0 events	97514	97491	96263	95545	108380	107537
rejected events	17379	17604	17761	18327	19009	26721		50%	50%	50%	50%	49%	24%
rejected %	8%	9%	9%	9%	8%	6%	grade 1 events	508	530	486	510	533	288
								0%	0%	0%	0%	0%	0%
							grade 2 events	31249	30862	30015	29919	34231	92375
								16%	15%	15%	15%	15%	20%
							grade 3 events	11152	11140	10884	10815	12303	42736
								5%	5%	5%	5%	5%	9%
							grade 4 events	11096	11096	10776	10932	12407	42427
								5%	5%	5%	5%	5%	9%
							grade 5 events	1401	1352	1312	1386	1557	5901
								0%	0%	0%	0%	0%	1%
							grade 6 events	25312	26058	24168	23958	30932	132572
								13%	13%	12%	12%	14%	29%
							grade 7 events	15470	15722	15963	16431	16919	20266
								7%	8%	8%	8%	7%	4%

## 2.2 Compared Parameters

Parameter	Planned	Actual
Instrument	ACIS	ACIS
Detector	ACIS-012367	ACIS-012367
Grating	NONE	NONE
Data mode	FAINT	FAINT
Observation mode	SECONDARY	SECONDARY
[deg] Pointing RA	0	176.3550224182058
[deg] Pointing Dec	0	56.5175344078436
[deg] Pointing Roll	0.0	40.69870889943137
[mm] SIM focus pos	-0.782348	-0.6828225247311905
[mm] SIM defocus	0	0.8505141146731063
[mm] SIM translation stage pos	-233.592463	250.466033080201
[mm] SIM translation stage offset	0	-0.01005468664627074
[s] Observation start time (MET)	89544779.26100001	89544778.492301
Observation start date	2000-11-02T09:32:59	2000-11-02T09:32:58
[s] Observation end time (MET)	89591170.763	89591169.99405301
Observation end date	2000-11-02T22:26:11	2000-11-02T22:26:09
Read mode	TIMED	TIMED

Parameter	Planned	Actual
Obspar format version number	7	7
Obspar file type	PREDICTED	ACTUAL
Obspar update status	NONE	UPDATED
On-chip summing requested	N	N
Subarray requested	NONE	NONE
Alternating exposures requested	N	N
[s] Primary exposure time	0.000000	3.2

## 2.3 Star Slots

## 2.4 FID Slots

## A Summary

### A.1 Status

V&V Scientist	Beth Sundheim
V&V Date (YYYY-MM-DD)	2012.09.11
V&V Edition	1
V&V Disposition and Status	OK
V&V Charge Time	5.4868118435144

### A.2 Comments