

# V&V Reference Report

## L2 ASCDS Version : 7.6.9

Observation 61484 - L2 Version 001  
Chandra X-Ray Center

L2 Processing Date : Dec 30 2006

## Contents

<b>1</b>	<b>Front</b>	<b>2</b>
<b>2</b>	<b>OBI</b>	<b>3</b>
2.1	OBI . . . . .	3
2.1.1	Images . . . . .	3
2.1.2	Bias . . . . .	3
2.1.3	Parameters . . . . .	4
2.1.4	Events . . . . .	4
2.2	Compared Parameters . . . . .	5
2.3	Aspect . . . . .	6
2.4	Star Slots . . . . .	8
2.5	FID Slots . . . . .	8
<b>A</b>	<b>Summary</b>	<b>9</b>
A.1	Status . . . . .	9
A.2	Comments . . . . .	9

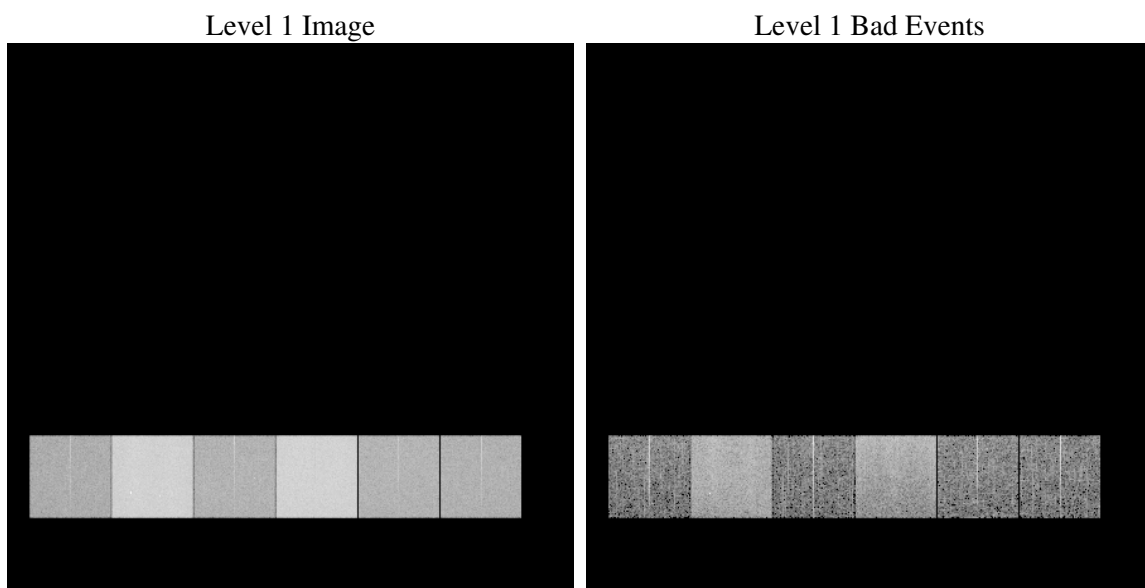
# 1 Front

seq_num	&#160
obs_id	61484
title	ACIS-456789 diagnostics
observer	CHANDRA engineering request/realtime commanding
object	&#160
dtcycle	0
cycle	P
ra_targ	0.0
dec_targ	0.0
ra_nom	0.70013930647454
dec_nom	17.232678975829
roll_nom	141.89318897138
revision	2
ontime	6250.7879998088
livetime	6171.6367583825
ontime4	2374.5556650311
ontime5	6754.8551169485
ontime6	2625.8746421486
ontime7	6250.7879998088
ontime8	2655.1261418909
ontime9	2564.171951592
l2events	1283285

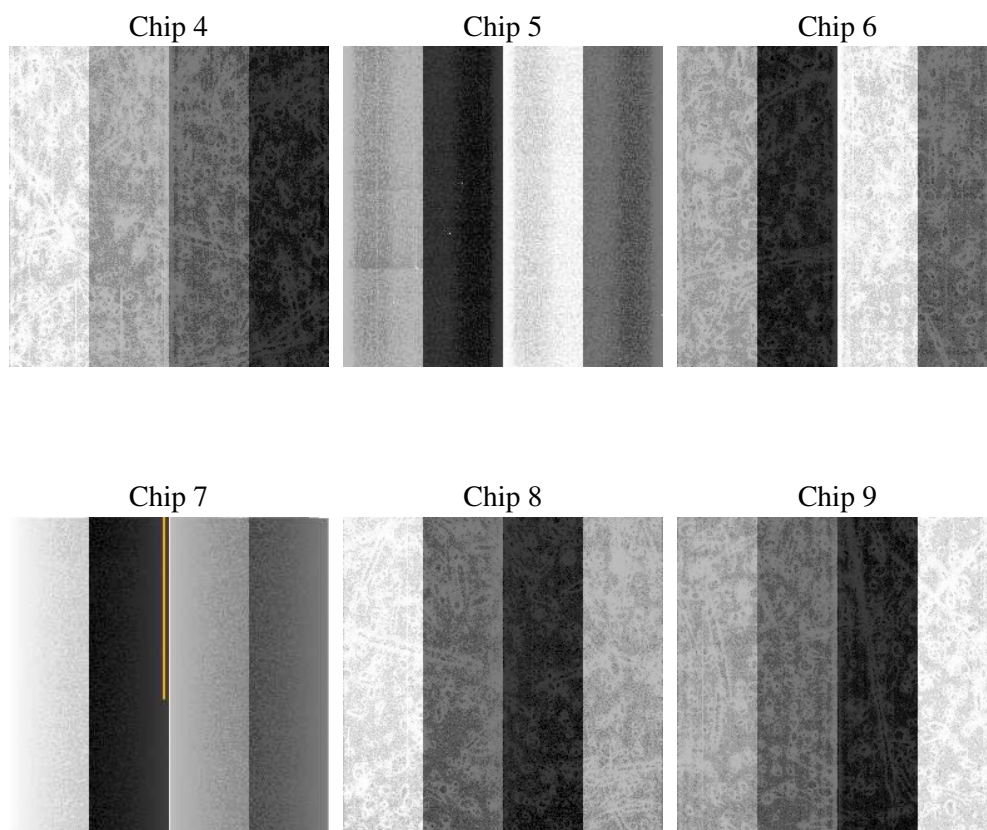
## 2 OBI

### 2.1 OBI

#### 2.1.1 Images



#### 2.1.2 Bias



### 2.1.3 Parameters

obi_num	0
ascdsver	7.6.9
caldsver	3.2.4
date	2006-12-30T23:05:37
revision	2

sched_exp_time	0.0
ontime	6323.2148073167
ontime4	2401.6085006893
ontime5	6828.8047878742
ontime6	2657.6503311545
ontime7	6323.2148073167
ontime8	2686.8197508901
ontime9	2599.3118005842
l1events	1545927

### 2.1.4 Events

	ccd 4	ccd 5	ccd 6	ccd 7	ccd 8	ccd 9
level 1 events	158466	413055	185305	422518	190480	176103
rejected events	22783	63759	22624	51882	24253	22818
rejected %	14%	15%	12%	12%	12%	12%

	ccd 4	ccd 5	ccd 6	ccd 7	ccd 8	ccd 9
grade 0 events	75616	37621	89467	67136	92941	84751
	47%	9%	48%	15%	48%	48%
grade 1 events	360	136	408	151	431	398
	0%	0%	0%	0%	0%	0%
grade 2 events	26991	170763	29364	114813	29948	28171
	17%	41%	15%	27%	15%	15%
grade 3 events	8004	11452	9892	27556	10391	9374
	5%	2%	5%	6%	5%	5%
grade 4 events	7831	11026	9737	27076	10158	9341
	4%	2%	5%	6%	5%	5%
grade 5 events	1325	6662	1571	6420	1643	1524
	0%	1%	0%	1%	0%	0%
grade 6 events	18955	122379	26209	138567	24780	23759
	11%	29%	14%	32%	13%	13%
grade 7 events	19384	53016	18657	40799	20188	18785
	12%	12%	10%	9%	10%	10%

## 2.2 Compared Parameters

Parameter	Planned	Actual	Parameter	Planned	Actual
Instrument	ACIS	ACIS	Obspar format version number	6	6
Detector	ACIS-456789	ACIS-456789	Obspar file type	PREDICTED	ACTUAL
Grating	NONE	NONE	Obspar update status	NONE	UPDATED
Data mode	FAINT	FAINT	On-chip summing requested	N	N
Observation mode	SECONDARY	SECONDARY	Subarray requested	NONE	NONE
Pointing RA	0	0.7001393064745398	Alternating exposures requested	N	N
Pointing Dec	0	17.23267897582936	Primary exposure time	3.2	3.2
Pointing Roll	0.0	141.8931889713839			
SIM focus pos (mm)	-0.684267	-0.6828225247311905			
SIM defocus (mm)	0	0.8505141146731063			
SIM translation stage pos (mm)	-190.132523	250.466033080201			
SIM translation stage offset (mm)	0	-0.01005468664627074			
Observation start time	115855464.279699	115855463.51121			
Observation start date	2001-09-02T22:04:24	2001-09-02T22:04:23			
Observation end time	115876774.030543	115876773.26205			
Observation end date	2001-09-03T03:59:34	2001-09-03T03:59:33			
Read mode	TIMED	TIMED			

## 2.3 Aspect



## **2.4 Star Slots**

## **2.5 FID Slots**



## A Summary

### A.1 Status

V&V Scientist	Beth Sundheim
V&V Date (YYYY-MM-DD)	2007.01.03
V&V Edition	1
V&V Disposition and Status	OK
V&V Charge Time	6.25078799

### A.2 Comments

Focal plane temperature is warmer than -118.7 C degrees during the entire observation.