

V&V Reference Report

L2 ASCDS Version : 7.6.10

Observation 61404 - L2 Version 001
Chandra X-Ray Center

L2 Processing Date : Jan 12 2007

Contents

1	Front	2
2	OBI	3
2.1	OBI	3
2.1.1	Images	3
2.1.2	Bias	3
2.1.3	Parameters	4
2.1.4	Events	4
2.2	Compared Parameters	5
2.3	Star Slots	6
2.4	FID Slots	6
A	Summary	7
A.1	Status	7
A.2	Comments	7

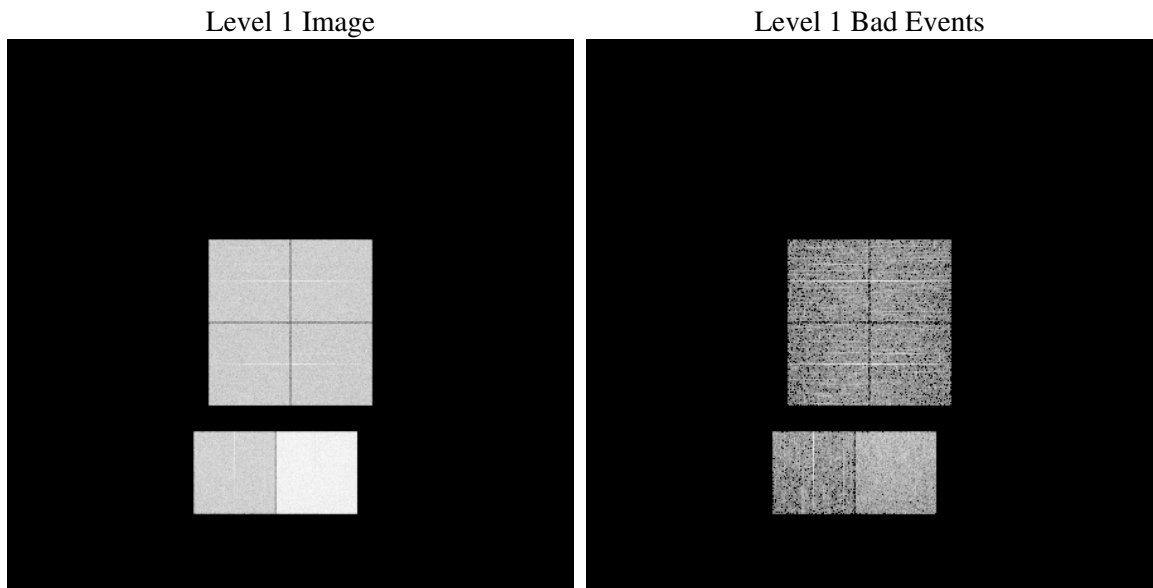
1 Front

seq_num	
obs_id	61404
title	ACIS-012367 diagnostics
observer	CHANDRA engineering request/realtime commanding
object	
dtcycle	0
cycle	P
ra_targ	0.0
dec_targ	0.0
ra_nom	335.02406370572
dec_nom	-23.016662242305
roll_nom	292.20437122285
revision	2
ontime	5658.8902810216
livetime	5587.2340049087
ontime0	2200.8086965829
ontime1	2236.5014455765
ontime2	2136.0704751611
ontime3	2126.1833048463
ontime6	2317.6089273393
ontime7	5658.8902810216
l2events	931941

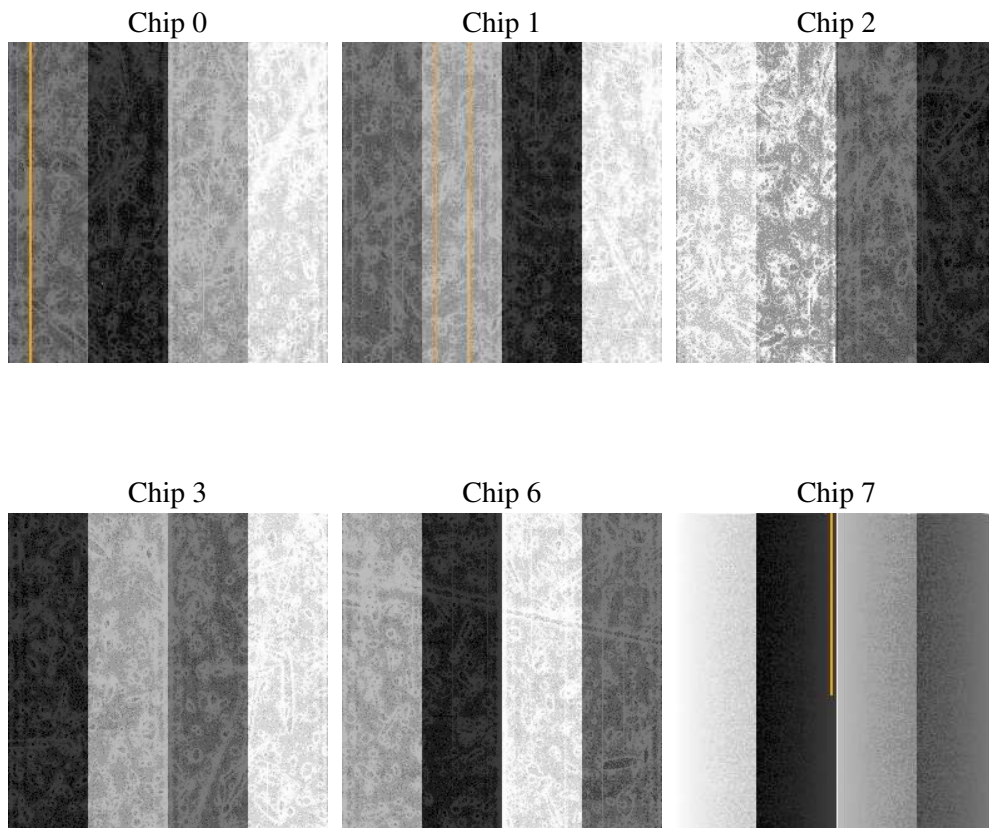
2 OBI

2.1 OBI

2.1.1 Images



2.1.2 Bias



2.1.3 Parameters

obi_num	0
ascdsver	7.6.10
caldsver	3.3.0
date	2007-01-12T13:03:17
revision	2

sched_exp_time	0.0
ontime	5658.8902810216
ontime0	2200.8086965829
ontime1	2236.5014455765
ontime2	2136.0704751611
ontime3	2126.1833048463
ontime6	2317.6089273393
ontime7	5658.8902810216
l1events	1088834

2.1.4 Events

	ccd 0	ccd 1	ccd 2	ccd 3	ccd 6	ccd 7
level 1 events	142277	144748	139647	139090	156086	366986
rejected events	17089	17630	17071	16882	17858	31519
rejected %	12%	12%	12%	12%	11%	8%

	ccd 0	ccd 1	ccd 2	ccd 3	ccd 6	ccd 7
grade 0 events	68782	69948	68000	68097	75179	84892
	48%	48%	48%	48%	48%	23%
grade 1 events	344	359	357	403	408	239
	0%	0%	0%	0%	0%	0%
grade 2 events	22341	22593	21779	21627	24024	73874
	15%	15%	15%	15%	15%	20%
grade 3 events	8025	8161	7658	7863	8681	34025
	5%	5%	5%	5%	5%	9%
grade 4 events	7891	8128	7708	7799	8543	33798
	5%	5%	5%	5%	5%	9%
grade 5 events	1151	1204	1089	1158	1323	6422
	0%	0%	0%	0%	0%	1%
grade 6 events	18341	18476	17624	17027	21974	109079
	12%	12%	12%	12%	14%	29%
grade 7 events	15402	15879	15432	15116	15954	24657
	10%	10%	11%	10%	10%	6%

2.2 Compared Parameters

Parameter	Planned	Actual	Parameter	Planned	Actual
Instrument	ACIS	ACIS	Obspar format version number	6	6
Detector	ACIS-012367	ACIS-012367	Obspar file type	PREDICTED	ACTUAL
Grating	NONE	NONE	Obspar update status	NONE	UPDATED
Data mode	FAINT	FAINT	On-chip summing requested	N	N
Observation mode	SECONDARY	SECONDARY	Subarray requested	NONE	NONE
Pointing RA	0	335.024063705718	Alternating exposures requested	N	N
Pointing Dec	0	-23.01666224230548	Primary exposure time	3.2	3.2
Pointing Roll	0.0	292.2043712228528			
SIM focus pos (mm)	-0.782348	-0.6828225247311905			
SIM defocus (mm)	0	0.8505141146731063			
SIM translation stage pos (mm)	-233.592463	250.466033080201			
SIM translation stage offset (mm)	0	-0.01005468664627074			
Observation start time	122492275.993141	122492275.22464			
Observation start date	2001-11-18T17:37:56	2001-11-18T17:37:55			
Observation end time	122525641.794479	122525641.02597			
Observation end date	2001-11-19T02:54:02	2001-11-19T02:54:01			
Read mode	TIMED	TIMED			

2.3 Star Slots

2.4 FID Slots

A Summary

A.1 Status

V&V Scientist	Beth Sundheim
V&V Date (YYYY-MM-DD)	2007.01.12
V&V Edition	1
V&V Disposition and Status	OK
V&V Charge Time	5.65889028

A.2 Comments