

V&V Reference Report

L2 ASCDS Version : 8.4.5

Observation 61304 - L2 Version 3
Chandra X-Ray Center

L2 Processing Date : Oct 2 2012

Contents

1	Front	2
2	OBI	3
2.1	OBI	3
2.1.1	Images	3
2.1.2	Bias	3
2.1.3	Parameters	4
2.1.4	Events	4
2.2	Compared Parameters	5
2.3	Star Slots	6
2.4	FID Slots	6
A	Summary	7
A.1	Status	7
A.2	Comments	7

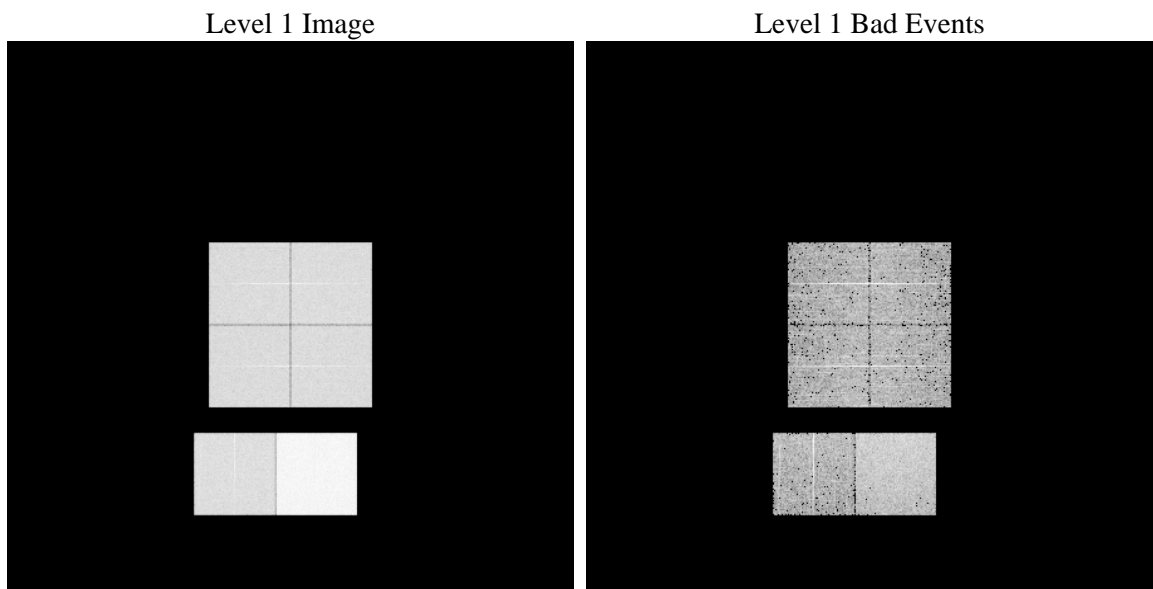
1 Front

seq_num	 	Sequence number
obs_id	61304	Observation id
title	ACIS-012367 diagnostics	Proposal title
observer	CHANDRA engineering request/realtime commanding	Principal investig
object	 	Source name
dtcycle	0	
cycle	P	events from which exps? Prim/Second/Both
ra_targ	0.0	Observer's specified target RA [deg]
dec_targ	0.0	Observer's specified target Dec [deg]
ra_nom	181.99539497828	Nominal RA [deg]
dec_nom	-0.97165153158197	Nominal Dec [deg]
roll_nom	66.430456611143	Nominal Roll [deg]
revision	3	Processing version of data
ontime	7624.5407176763	Sum of GTIs [s]
livetime	7527.9941921618	Livetime [s]
ontime0	3066.0191483498	Sum of GTIs [s]
ontime1	3153.5264013559	Sum of GTIs [s]
ontime2	2949.3422667384	Sum of GTIs [s]
ontime3	3012.6677893102	Sum of GTIs [s]
ontime6	3231.310842976	Sum of GTIs [s]
ontime7	7624.5407176763	Sum of GTIs [s]
l2events	1203547	Number of level 2 events

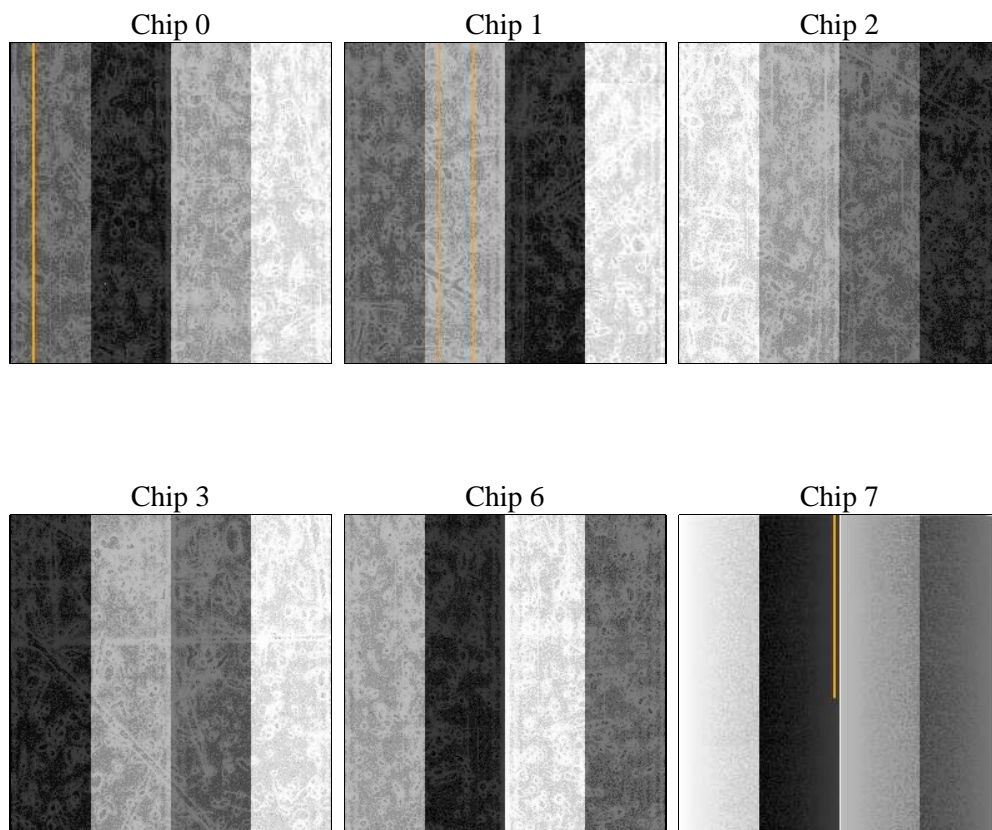
2 OBI

2.1 OBI

2.1.1 Images



2.1.2 Bias



2.1.3 Parameters

obi_num	0	Obi number	sched_exp_time	0.0	[s] Scheduled observation exposure time
ascdsver	8.4.5	Processing system revision	ontime	7624.5407176763	Sum of GTIs [s]
caldsver	4.5.2	 	ontime0	3066.0191483498	Sum of GTIs [s]
date	2012-10-02T19:29:16	Date and time of file creation	ontime1	3153.5264013559	Sum of GTIs [s]
revision	3	Processing version of data	ontime2	2949.3422667384	Sum of GTIs [s]
			ontime3	3012.6677893102	Sum of GTIs [s]
			ontime6	3231.310842976	Sum of GTIs [s]
			ontime7	7624.5407176763	Sum of GTIs [s]
			l1events	1411814	Number of level 1 events

2.1.4 Events

	ccd 0	ccd 1	ccd 2	ccd 3	ccd 6	ccd 7		ccd 0	ccd 1	ccd 2	ccd 3	ccd 6	ccd 7
level 1 events	184919	190813	181812	185752	204082	464436	grade 0 events	90172	92699	88118	90820	98478	106056
rejected events	21886	22668	23549	23593	24130	41975		48%	48%	48%	48%	48%	22%
rejected %	11%	11%	12%	12%	11%	9%	grade 1 events	493	467	431	450	486	262
								0%	0%	0%	0%	0%	0%
							grade 2 events	28684	30040	27616	28641	30971	93000
								15%	15%	15%	15%	15%	20%
							grade 3 events	10333	10664	9947	10170	10955	42356
								5%	5%	5%	5%	5%	9%
							grade 4 events	10199	10573	9967	10212	10905	42443
								5%	5%	5%	5%	5%	9%
							grade 5 events	1531	1617	1434	1596	1757	8382
								0%	0%	0%	0%	0%	1%
							grade 6 events	23645	24169	22615	22316	28643	138606
								12%	12%	12%	12%	14%	29%
							grade 7 events	19862	20584	21684	21547	21887	33331
								10%	10%	11%	11%	10%	7%

2.2 Compared Parameters

Parameter	Planned	Actual
Instrument	ACIS	ACIS
Detector	ACIS-012367	ACIS-012367
Grating	NONE	NONE
Data mode	FAINT	FAINT
Observation mode	SECONDARY	SECONDARY
[deg] Pointing RA	0	181.9953949782803
[deg] Pointing Dec	0	-0.9716515315819652
[deg] Pointing Roll	0.0	66.43045661114333
[mm] SIM focus pos	-0.782348	-0.7809083437167272
[mm] SIM defocus	0	0.7524282956875696
[mm] SIM translation stage pos	-233.592463	250.466033080201
[mm] SIM translation stage offset	0	-0.01005468664627074
[s] Observation start time (MET)	130441706.862434	130441706.09396
Observation start date	2002-02-18T17:48:27	2002-02-18T17:48:26
[s] Observation end time (MET)	130453254.5129	130453253.74443
Observation end date	2002-02-18T21:00:55	2002-02-18T21:00:53
Read mode	TIMED	TIMED

Parameter	Planned	Actual
Obspar format version number	7	7
Obspar file type	PREDICTED	ACTUAL
Obspar update status	NONE	UPDATED
On-chip summing requested	N	N
Subarray requested	NONE	NONE
Alternating exposures requested	N	N
[s] Primary exposure time	3.2	3.2

2.3 Star Slots

2.4 FID Slots

A Summary

A.1 Status

V&V Scientist	Jen Lauer
V&V Date (YYYY-MM-DD)	2012.10.04
V&V Edition	1
V&V Disposition and Status	OK
V&V Charge Time	7.6245407176763

A.2 Comments