

V&V Reference Report

L2 ASCDS Version : 7.6.9

Observation 61054 - L2 Version 001
Chandra X-Ray Center

L2 Processing Date : Oct 2 2006

Contents

1	Front	2
2	OBI	3
2.1	OBI	3
2.1.1	Images	3
2.1.2	Bias	3
2.1.3	Parameters	4
2.1.4	Events	4
2.2	Compared Parameters	5
2.3	Aspect	6
2.4	Star Slots	8
2.5	FID Slots	8
A	Summary	9
A.1	Status	9
A.2	Comments	9

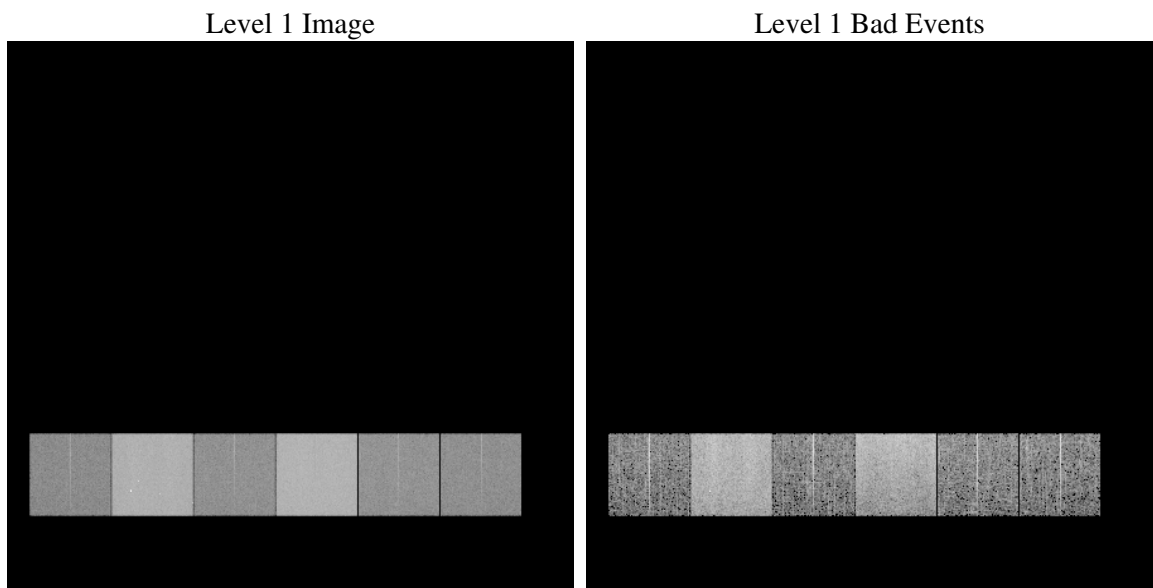
1 Front

seq_num	
obs_id	61054
title	ACIS-456789 diagnostics
observer	CHANDRA engineering request/realtime commanding
object	
dtcycle	0
cycle	P
ra_targ	0.0
dec_targ	0.0
ra_nom	349.9709918235
dec_nom	9.9985462082661
roll_nom	150.10809263769
revision	2
ontime	8243.022161901
livetime	8138.6440519349
ontime4	2953.8600354195
ontime5	8456.9667006135
ontime6	3242.2698709071
ontime7	8243.022161901
ontime8	3346.064911902
ontime9	3167.6035980284
l2events	1275535

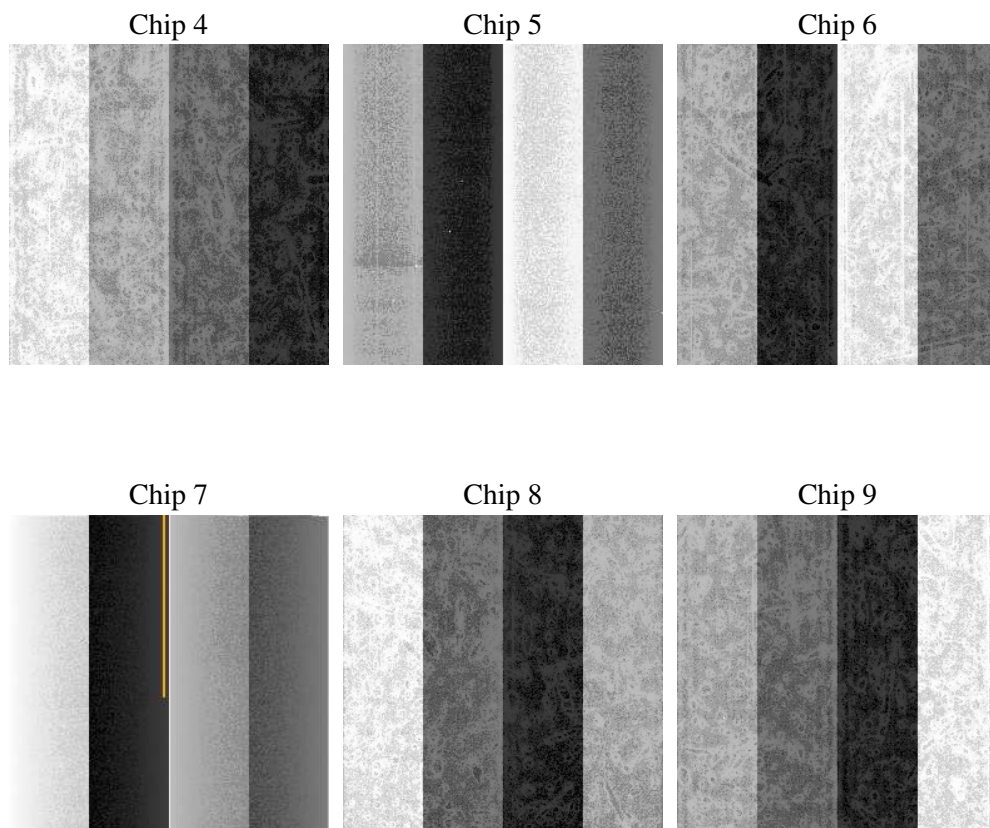
2 OBI

2.1 OBI

2.1.1 Images



2.1.2 Bias



2.1.3 Parameters

obi_num	1
ascdsver	7.6.9
caldsver	3.2.3
date	2006-10-03T00:24:29
revision	2

sched_exp_time	0.0
ontime	8245.1105002463
ontime4	2955.8252537549
ontime5	8459.0139989555
ontime6	3244.2761292458
ontime7	8245.1105002463
ontime8	3347.9890902638
ontime9	3169.732976377
l1events	1555599

2.1.4 Events

	ccd 4	ccd 5	ccd 6	ccd 7	ccd 8	ccd 9
level 1 events	155298	413778	180982	443333	190401	171807
rejected events	23173	68878	23885	59968	25527	23247
rejected %	14%	16%	13%	13%	13%	13%

	ccd 4	ccd 5	ccd 6	ccd 7	ccd 8	ccd 9
grade 0 events	77880	34180	85259	65078	91420	82789
	50%	8%	47%	14%	48%	48%
grade 1 events	569	112	384	154	442	422
	0%	0%	0%	0%	0%	0%
grade 2 events	19916	167156	27787	119993	28585	24995
	12%	40%	15%	27%	15%	14%
grade 3 events	8734	10890	9403	26805	10301	9211
	5%	2%	5%	6%	5%	5%
grade 4 events	8688	9778	9614	26475	10612	9459
	5%	2%	5%	5%	5%	5%
grade 5 events	1451	7216	1739	7547	1851	1649
	0%	1%	0%	1%	0%	0%
grade 6 events	17053	123028	25208	145170	24107	22262
	10%	29%	13%	32%	12%	12%
grade 7 events	21007	61418	21588	52111	23083	21020
	13%	14%	11%	11%	12%	12%

2.2 Compared Parameters

Parameter	Planned	Actual	Parameter	Planned	Actual
Instrument	ACIS	ACIS	Obspar format version number	6	6
Detector	ACIS-456789	ACIS-456789	Obspar file type	PREDICTED	ACTUAL
Grating	NONE	NONE	Obspar update status	NONE	UPDATED
Data mode	FAINT	FAINT	On-chip summing requested	N	N
Observation mode	SECONDARY	SECONDARY	Subarray requested	NONE	NONE
Pointing RA	0	349.9709918235048	Alternating exposures requested	N	N
Pointing Dec	0	9.998546208266109	Primary exposure time	0.000000	3.2
Pointing Roll	0.0	150.1080926376912			
SIM focus pos (mm)	-0.684267	-1.038866356238299			
SIM defocus (mm)	0	0.4944702831659975			
SIM translation stage pos (mm)	-190.132523	250.466033080201			
SIM translation stage offset (mm)	0	-0.01005468664627074			
Observation start time	147158000.251275	147157999.22656			
Observation start date	2002-08-31T05:13:20	2002-08-31T05:13:19			
Observation end time	147180626.102208	147180625.0775			
Observation end date	2002-08-31T11:30:26	2002-08-31T11:30:25			
Read mode	TIMED	TIMED			

2.3 Aspect

2.4 Star Slots

2.5 FID Slots

A Summary

A.1 Status

V&V Scientist	Jen Lauer
V&V Date (YYYY-MM-DD)	2006.10.03
V&V Edition	1
V&V Disposition and Status	OK
V&V Charge Time	8.24302216

A.2 Comments

The ACIS focal plane temperature was above calibration limits for the entire observation.