

# V&V Reference Report

## L2 ASCDS Version : 7.6.9

Observation 60944 - L2 Version 001  
Chandra X-Ray Center

L2 Processing Date : Oct 13 2006

## Contents

<b>1</b>	<b>Front</b>	<b>2</b>
<b>2</b>	<b>OBI</b>	<b>3</b>
2.1	OBI . . . . .	3
2.1.1	Images . . . . .	3
2.1.2	Bias . . . . .	3
2.1.3	Parameters . . . . .	4
2.1.4	Events . . . . .	4
2.2	Compared Parameters . . . . .	5
2.3	Aspect . . . . .	6
2.4	Star Slots . . . . .	8
2.5	FID Slots . . . . .	8
<b>A</b>	<b>Summary</b>	<b>9</b>
A.1	Status . . . . .	9
A.2	Comments . . . . .	9

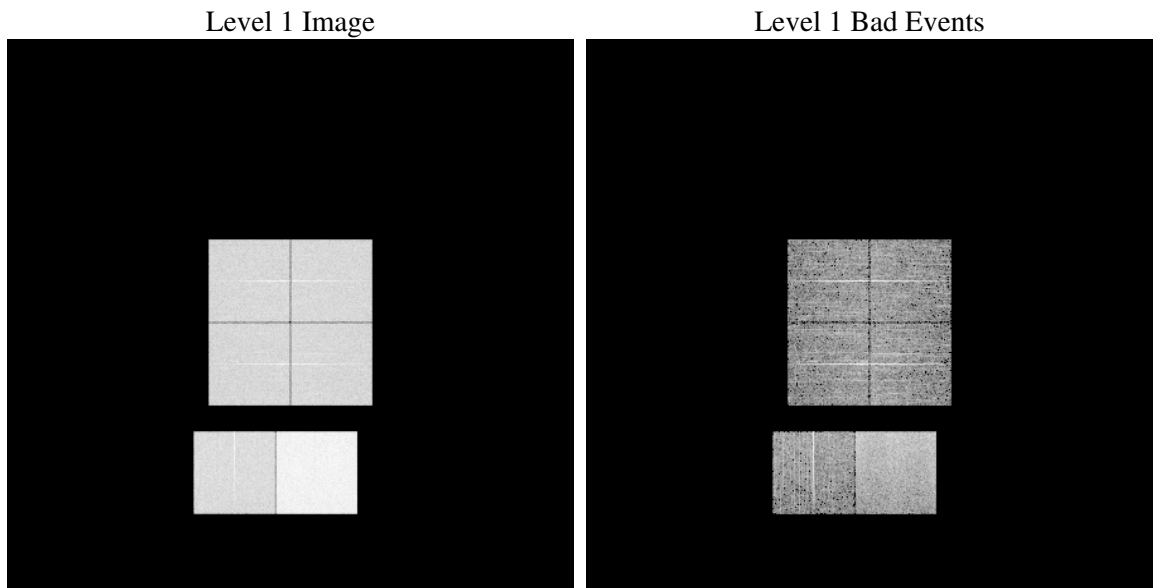
# 1 Front

seq_num	&#160
obs_id	60944
title	ACIS-012367 diagnostics
observer	CHANDRA engineering request/realtime commanding
object	&#160
dtcycle	0
cycle	P
ra_targ	0.0
dec_targ	0.0
ra_nom	101.28459985974
dec_nom	23.724861815482
roll_nom	86.684822073747
revision	2
ontime	7791.9999709725
livetime	7693.332975561
ontime0	3977.3615263402
ontime1	4032.7387317717
ontime2	3851.2832044661
ontime3	3870.4086001515
ontime6	4233.7632505596
ontime7	7791.9999709725
l2events	1186550

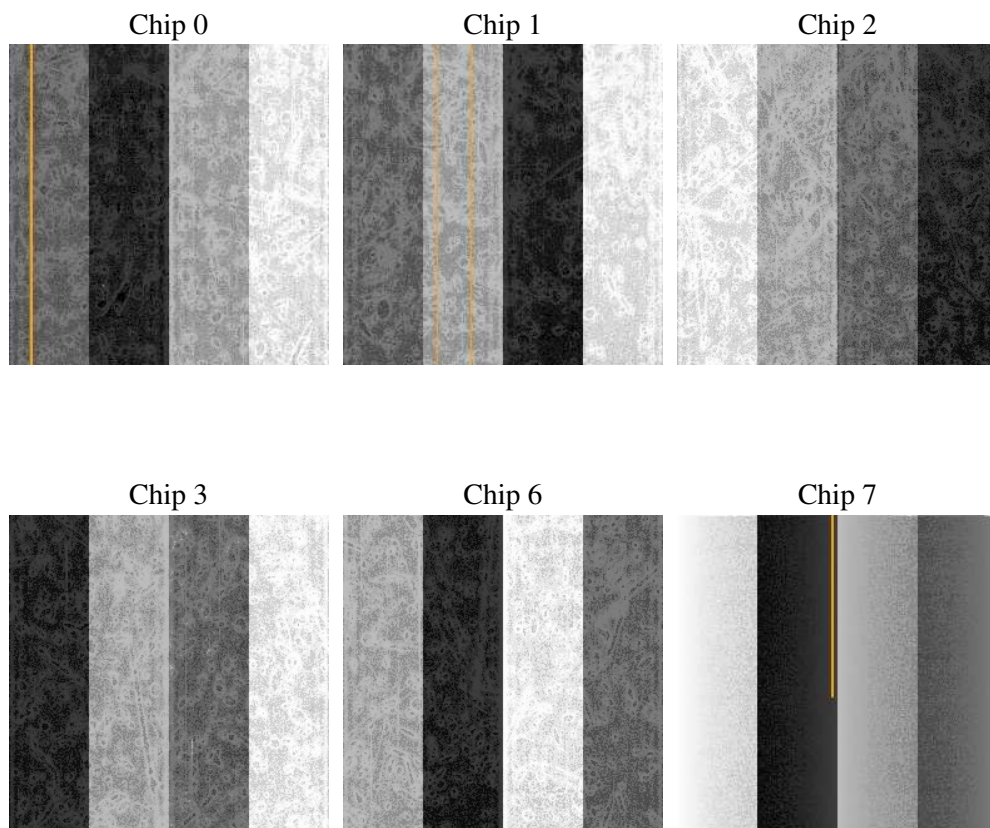
## 2 OBI

### 2.1 OBI

#### 2.1.1 Images



#### 2.1.2 Bias



### 2.1.3 Parameters

obi_num	1
ascdsver	7.6.9
caldbver	3.2.3
date	2006-10-13T23:30:26
revision	2

sched_exp_time	0.0
ontime	7794.6242748797
ontime0	3979.9858302474
ontime1	4035.0830818415
ontime2	3853.5865145326
ontime3	3873.0329040587
ontime6	4236.0255206525
ontime7	7794.6242748797
l1events	1429931

### 2.1.4 Events

	ccd 0	ccd 1	ccd 2	ccd 3	ccd 6	ccd 7
level 1 events	201007	203385	198522	200646	224736	401635
rejected events	26415	26482	27097	28116	29741	51838
rejected %	13%	13%	13%	14%	13%	12%

	ccd 0	ccd 1	ccd 2	ccd 3	ccd 6	ccd 7
grade 0 events	96456	97733	96380	97317	106719	66079
	47%	48%	48%	48%	47%	16%
grade 1 events	476	453	554	548	507	141
	0%	0%	0%	0%	0%	0%
grade 2 events	30295	31590	29071	29453	33637	104409
	15%	15%	14%	14%	14%	25%
grade 3 events	11387	11268	11139	11096	12139	26763
	5%	5%	5%	5%	5%	6%
grade 4 events	11298	11204	11061	11301	12163	26279
	5%	5%	5%	5%	5%	6%
grade 5 events	1880	1860	1786	1910	2216	6886
	0%	0%	0%	0%	0%	1%
grade 6 events	25289	25252	23914	23521	30499	126384
	12%	12%	12%	11%	13%	31%
grade 7 events	23926	24025	24617	25500	26856	44694
	11%	11%	12%	12%	11%	11%

## 2.2 Compared Parameters

Parameter	Planned	Actual	Parameter	Planned	Actual
Instrument	ACIS	ACIS	Obspar format version number	6	6
Detector	ACIS-012367	ACIS-012367	Obspar file type	PREDICTED	ACTUAL
Grating	NONE	NONE	Obspar update status	NONE	UPDATED
Data mode	FAINT	FAINT	On-chip summing requested	N	N
Observation mode	SECONDARY	SECONDARY	Subarray requested	NONE	NONE
Pointing RA	0	101.2845998597377	Alternating exposures requested	N	N
Pointing Dec	0	23.72486181548194	Primary exposure time	0.000000	3.2
Pointing Roll	0.0	86.6848220737473			
SIM focus pos (mm)	-0.782348	-0.6828225247311905			
SIM defocus (mm)	0	0.8505141146731063			
SIM translation stage pos (mm)	-233.592463	250.466033080201			
SIM translation stage offset (mm)	0	-0.01005468664627074			
Observation start time	155122781.531646	155122780.50694			
Observation start date	2002-12-01T09:39:42	2002-12-01T09:39:40			
Observation end time	155155382.683004	155155381.6583			
Observation end date	2002-12-01T18:43:03	2002-12-01T18:43:01			
Read mode	TIMED	TIMED			

## 2.3 Aspect



## **2.4 Star Slots**

## **2.5 FID Slots**



## A Summary

### A.1 Status

V&V Scientist	Beth Sundheim
V&V Date (YYYY-MM-DD)	2006.10.15
V&V Edition	1
V&V Disposition and Status	OK
V&V Charge Time	7.79199997

### A.2 Comments