

V&V Reference Report

L2 ASCDS Version : 7.6.8

Observation 60814 - L2 Version 001
Chandra X-Ray Center

L2 Processing Date : Jul 22 2006

Contents

1	Front	2
2	OBI	3
2.1	OBI	3
2.1.1	Images	3
2.1.2	Bias	3
2.1.3	Parameters	4
2.1.4	Events	4
2.2	Compared Parameters	5
2.3	Aspect	6
2.4	Star Slots	8
2.5	FID Slots	8
A	Summary	9
A.1	Status	9
A.2	Comments	9

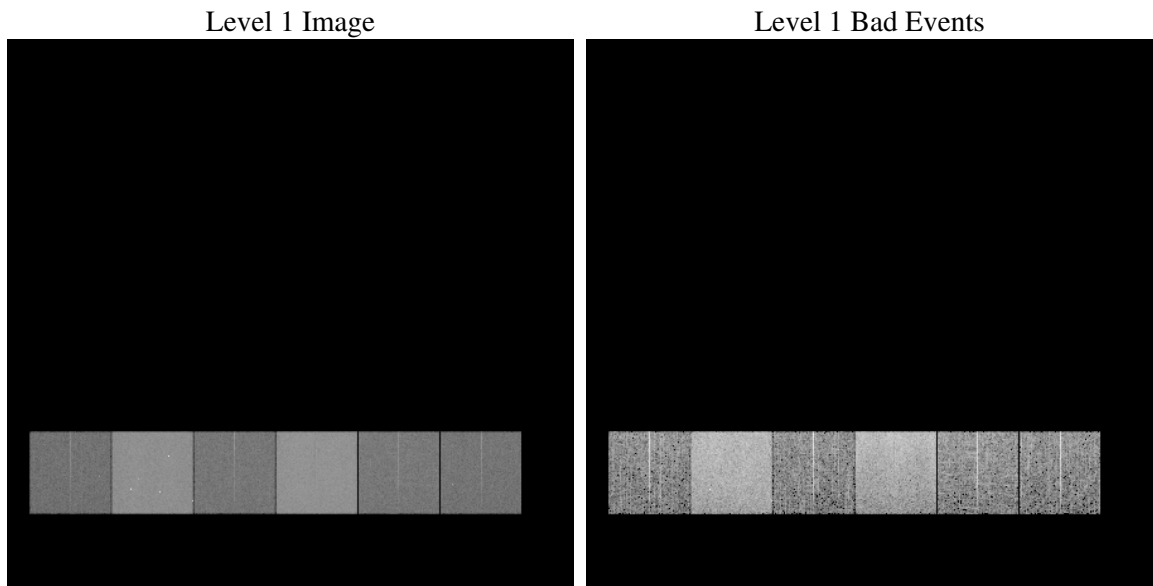
1 Front

seq_num	
obs_id	60814
title	ACIS-456789 diagnostics
observer	CHANDRA engineering request/realtime commanding
object	
dtcycle	0
cycle	P
ra_targ	0.0
dec_targ	0.0
ra_nom	183.92512009915
dec_nom	68.990284280172
roll_nom	167.05898460784
revision	2
ontime	8460.7999684811
livetime	8353.664224798
ontime4	3521.9475378394
ontime5	8460.7999684811
ontime6	3881.6588389874
ontime7	8460.7999684811
ontime8	4007.6978037059
ontime9	3748.416108638
l2events	1245318

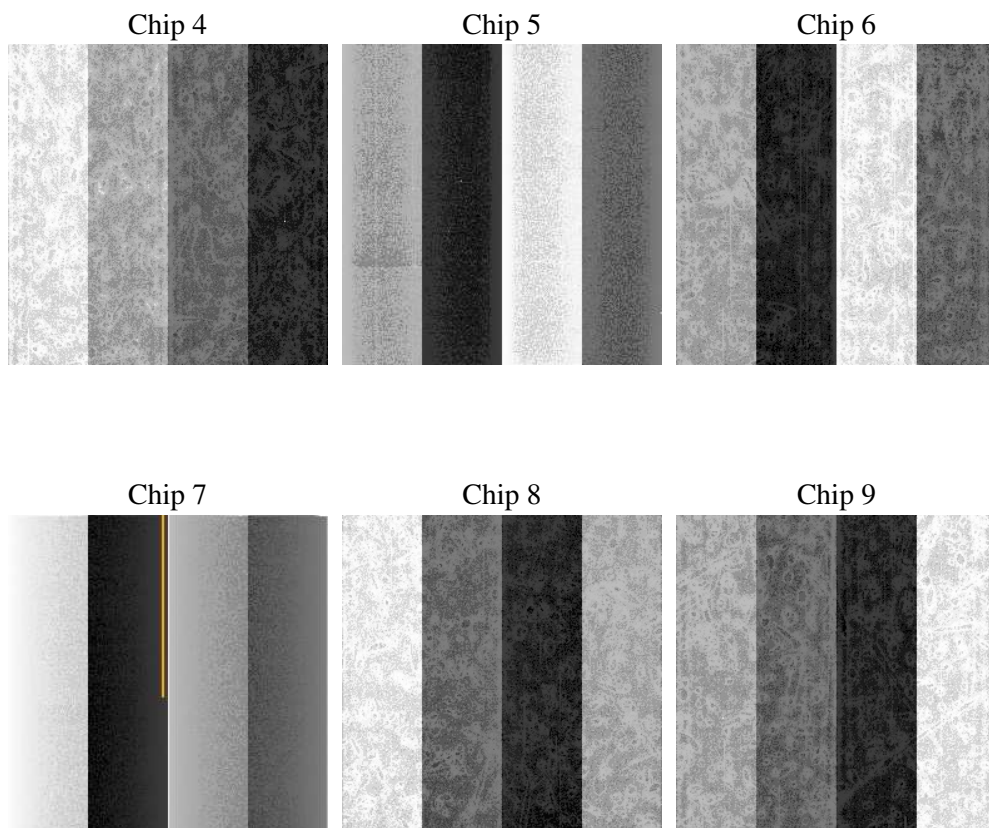
2 OBI

2.1 OBI

2.1.1 Images



2.1.2 Bias



2.1.3 Parameters

obi_num	0
ascdsver	7.6.8
caldbver	3.2.2
date	2006-07-23T00:49:35
revision	2

sched_exp_time	0.0
ontime	8462.2577462196
ontime4	3523.0041650534
ontime5	8462.2577462196
ontime6	3882.7565062046
ontime7	8462.2577462196
ontime8	4009.1555814445
ontime9	3749.8738863766
l1events	1542187

2.1.4 Events

	ccd 4	ccd 5	ccd 6	ccd 7	ccd 8	ccd 9
level 1 events	167332	380713	194272	412494	204792	182584
rejected events	26823	65150	27121	58642	30592	27255
rejected %	16%	17%	13%	14%	14%	14%

	ccd 4	ccd 5	ccd 6	ccd 7	ccd 8	ccd 9
grade 0 events	81339	38282	91204	63956	96193	86153
	48%	10%	46%	15%	46%	47%
grade 1 events	605	131	471	146	489	530
	0%	0%	0%	0%	0%	0%
grade 2 events	22506	150109	28522	106782	30048	26579
	13%	39%	14%	25%	14%	14%
grade 3 events	9403	10459	10474	26042	11038	9857
	5%	2%	5%	6%	5%	5%
grade 4 events	9200	10052	10450	25797	11234	9923
	5%	2%	5%	6%	5%	5%
grade 5 events	1740	7055	1945	7639	2310	1932
	1%	1%	1%	1%	1%	1%
grade 6 events	18061	106661	26501	131275	25687	22817
	10%	28%	13%	31%	12%	12%
grade 7 events	24478	57964	24705	50857	27793	24793
	14%	15%	12%	12%	13%	13%

2.2 Compared Parameters

Parameter	Planned	Actual	Parameter	Planned	Actual
Instrument	ACIS	ACIS	Obspar format version number	6	6
Detector	ACIS-456789	ACIS-456789	Obspar file type	PREDICTED	ACTUAL
Grating	NONE	NONE	Obspar update status	NONE	UPDATED
Data mode	FAINT	FAINT	On-chip summing requested	N	N
Observation mode	SECONDARY	SECONDARY	Subarray requested	NONE	NONE
Pointing RA	0	183.9251200991541	Alternating exposures requested	N	N
Pointing Dec	0	68.99028428017195	Primary exposure time	0.000000	3.2
Pointing Roll	0.0	167.0589846078413			
SIM focus pos (mm)	-0.684267	-0.7809083437167272			
SIM defocus (mm)	0	0.7524282956875696			
SIM translation stage pos (mm)	-190.132523	250.466033080201			
SIM translation stage offset (mm)	0	-0.01005468664627074			
Observation start time	163846761.897096	163846760.87238			
Observation start date	2003-03-12T08:59:22	2003-03-12T08:59:20			
Observation end time	163857674.047555	163857673.02284			
Observation end date	2003-03-12T12:01:14	2003-03-12T12:01:13			
Read mode	TIMED	TIMED			

2.3 Aspect

2.4 Star Slots

2.5 FID Slots

A Summary

A.1 Status

V&V Scientist	Beth Sundheim
V&V Date (YYYY-MM-DD)	2006.07.23
V&V Edition	1
V&V Disposition and Status	OK
V&V Charge Time	8.46079996

A.2 Comments