

V&V Reference Report

L2 ASCDS Version : 8.4.5

Observation 60584 - L2 Version 3
Chandra X-Ray Center

L2 Processing Date : Nov 3 2012

Contents

1	Front	2
2	OBI	3
2.1	OBI	3
2.1.1	Images	3
2.1.2	Bias	3
2.1.3	Parameters	4
2.1.4	Events	4
2.2	Compared Parameters	5
2.3	Star Slots	6
2.4	FID Slots	6
A	Summary	7
A.1	Status	7
A.2	Comments	7

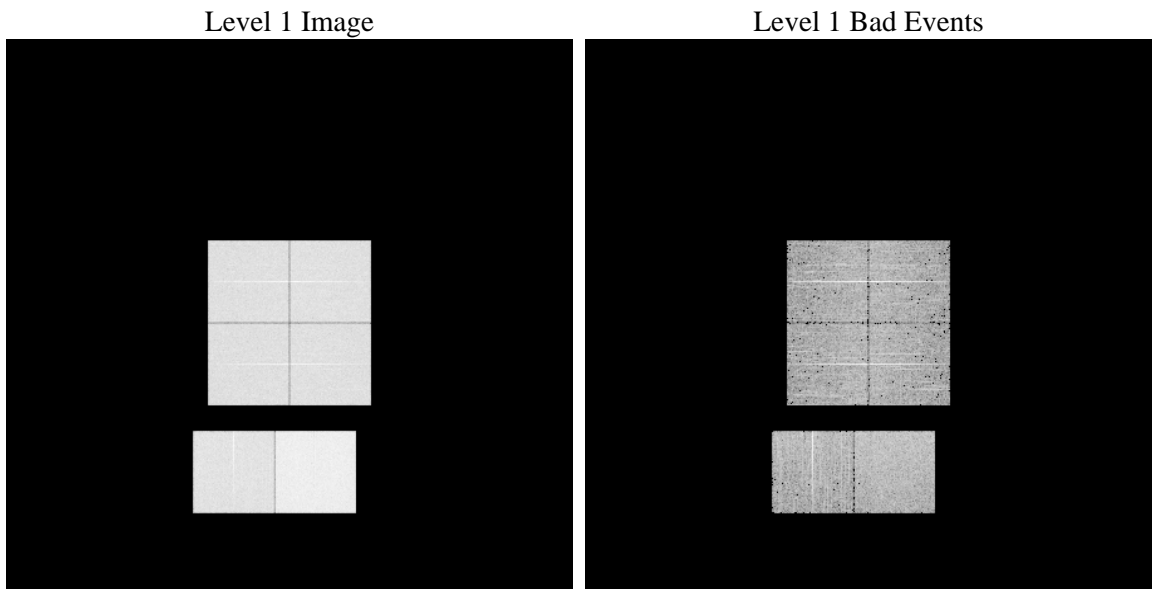
1 Front

seq_num	 	Sequence number
obs_id	60584	Observation id
title	ACIS-012367 diagnostics	Proposal title
observer	CHANDRA engineering request/realtime commanding	Principal investig
object	 	Source name
dtcycle	0	
cycle	P	events from which exps? Prim/Second/Both
ra_targ	0.0	Observer's specified target RA [deg]
dec_targ	0.0	Observer's specified target Dec [deg]
ra_nom	276.42693862708	Nominal RA [deg]
dec_nom	-38.019205619045	Nominal Dec [deg]
roll_nom	284.97358427462	Nominal Roll [deg]
revision	3	Processing version of data
ontime	8463.9999684691	Sum of GTIs [s]
livetime	8356.8237044595	Livetime [s]
ontime0	5352.6651538312	Sum of GTIs [s]
ontime1	5472.5817418098	Sum of GTIs [s]
ontime2	5122.5558664501	Sum of GTIs [s]
ontime3	5233.6442233622	Sum of GTIs [s]
ontime6	5637.8715351224	Sum of GTIs [s]
ontime7	8463.9999684691	Sum of GTIs [s]
l2events	1266553	Number of level 2 events

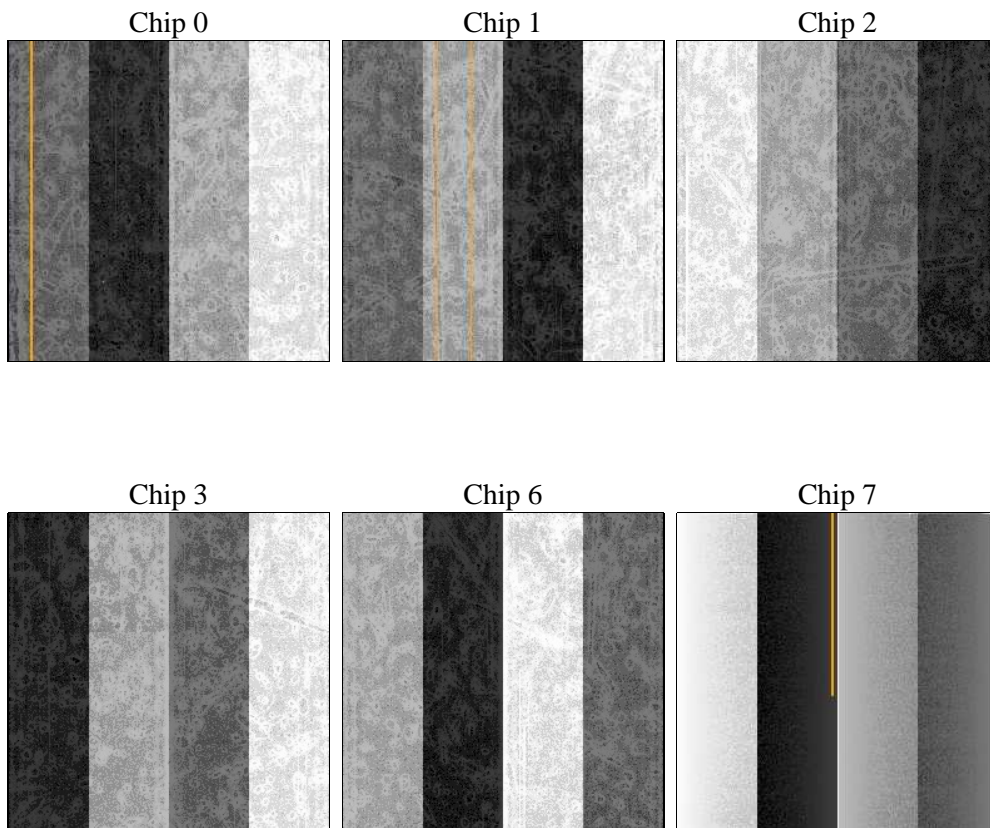
2 OBI

2.1 OBI

2.1.1 Images



2.1.2 Bias



2.1.3 Parameters

obi_num	0	Obi number	sched_exp_time	0.0	[s] Scheduled observation exposure time
ascdsver	8.4.5	Processing system revision	ontime	8463.9999684691	Sum of GTIs [s]
caldsver	4.5.2	 	ontime0	5352.6651538312	Sum of GTIs [s]
date	2012-11-03T17:14:44	Date and time of file creation	ontime1	5472.5817418098	Sum of GTIs [s]
revision	3	Processing version of data	ontime2	5122.5558664501	Sum of GTIs [s]
			ontime3	5233.6442233622	Sum of GTIs [s]
			ontime6	5637.8715351224	Sum of GTIs [s]
			ontime7	8463.9999684691	Sum of GTIs [s]
			l1events	1539116	Number of level 1 events

2.1.4 Events

	ccd 0	ccd 1	ccd 2	ccd 3	ccd 6	ccd 7		ccd 0	ccd 1	ccd 2	ccd 3	ccd 6	ccd 7
level 1 events	227915	235064	223631	227802	253179	371525	grade 0 events	108649	111090	107619	109910	117888	81608
rejected events	32173	33512	33466	33288	37282	42973		47%	47%	48%	48%	46%	21%
rejected %	14%	14%	14%	14%	14%	11%	grade 1 events	526	456	599	569	471	228
								0%	0%	0%	0%	0%	0%
							grade 2 events	33959	35840	31356	32497	36990	72557
								14%	15%	14%	14%	14%	19%
							grade 3 events	12597	12625	12277	12699	13304	32491
								5%	5%	5%	5%	5%	8%
							grade 4 events	12463	12683	12287	12644	13283	32749
								5%	5%	5%	5%	5%	8%
							grade 5 events	2284	2211	2095	2317	2542	8023
								1%	0%	0%	1%	1%	2%
							grade 6 events	28074	29314	26626	26764	34432	109147
								12%	12%	11%	11%	13%	29%
							grade 7 events	29363	30845	30772	30402	34269	34722
								12%	13%	13%	13%	13%	9%

2.2 Compared Parameters

Parameter	Planned	Actual
Instrument	ACIS	ACIS
Detector	ACIS-012367	ACIS-012367
Grating	NONE	NONE
Data mode	FAINT	FAINT
Observation mode	SECONDARY	SECONDARY
[deg] Pointing RA	0	276.4269386270794
[deg] Pointing Dec	0	-38.01920561904507
[deg] Pointing Roll	0.0	284.973584274617
[mm] SIM focus pos	-0.782348	-0.6828225247311905
[mm] SIM defocus	0	0.8505141146731063
[mm] SIM translation stage pos	-233.592463	250.466033080201
[mm] SIM translation stage offset	0	-0.01005468664627074
[s] Observation start time (MET)	177546453.278222	177546452.2535
Observation start date	2003-08-17T22:27:33	2003-08-17T22:27:32
[s] Observation end time (MET)	177568306.279158	177568305.25443
Observation end date	2003-08-18T04:31:46	2003-08-18T04:31:45
Read mode	TIMED	TIMED

Parameter	Planned	Actual
Obspar format version number	7	7
Obspar file type	PREDICTED	ACTUAL
Obspar update status	NONE	UPDATED
On-chip summing requested	N	N
Subarray requested	NONE	NONE
Alternating exposures requested	N	N
[s] Primary exposure time	0.000000	3.2

2.3 Star Slots

2.4 FID Slots

A Summary

A.1 Status

V&V Scientist	Jen Lauer
V&V Date (YYYY-MM-DD)	2012.12.06
V&V Edition	1
V&V Disposition and Status	OK
V&V Charge Time	8.4639999684691

A.2 Comments