

V&V Reference Report

L2 ASCDS Version : 7.6.8

Observation 60584 - L2 Version 001
Chandra X-Ray Center

L2 Processing Date : Jul 11 2006

Contents

1	Front	2
2	OBI	3
2.1	OBI	3
2.1.1	Images	3
2.1.2	Bias	3
2.1.3	Parameters	4
2.1.4	Events	4
2.2	Compared Parameters	5
2.3	Aspect	6
2.4	Star Slots	8
2.5	FID Slots	8
A	Summary	9
A.1	Status	9
A.2	Comments	9

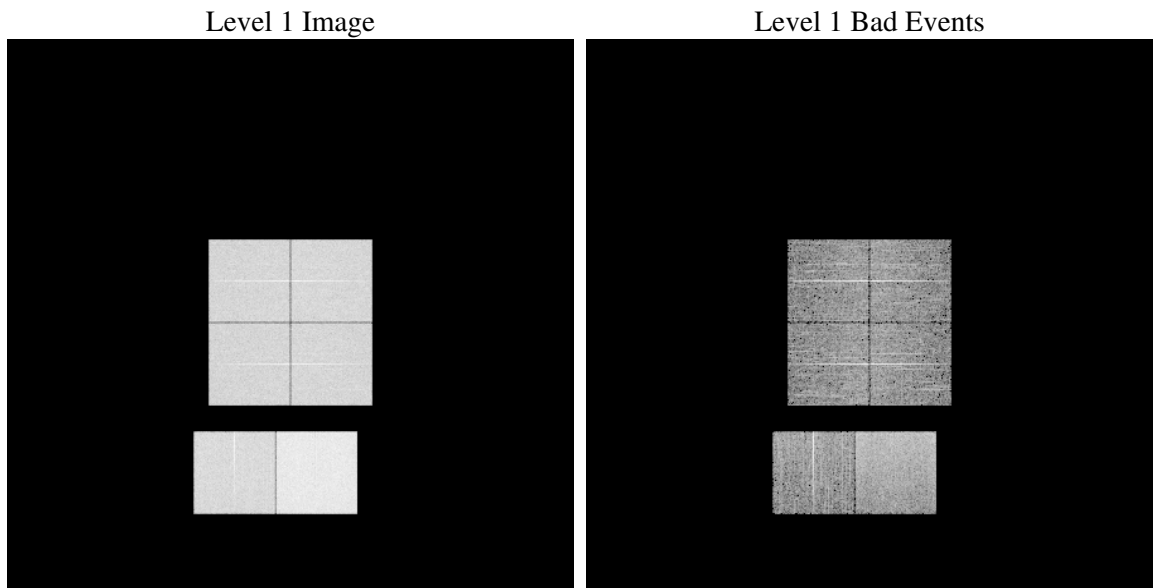
1 Front

seq_num	
obs_id	60584
title	ACIS-012367 diagnostics
observer	CHANDRA engineering request/realtime commanding
object	
dtcycle	0
cycle	P
ra_targ	0.0
dec_targ	0.0
ra_nom	276.42692955643
dec_nom	-38.019178773122
roll_nom	284.97357867887
revision	2
ontime	8463.3368738592
livetime	8356.1690063527
ontime0	5352.0430992246
ontime1	5472.0007272065
ontime2	5122.01589185
ontime3	5232.0442233682
ontime6	5637.3726004958
ontime7	8463.3368738592
l2events	1252862

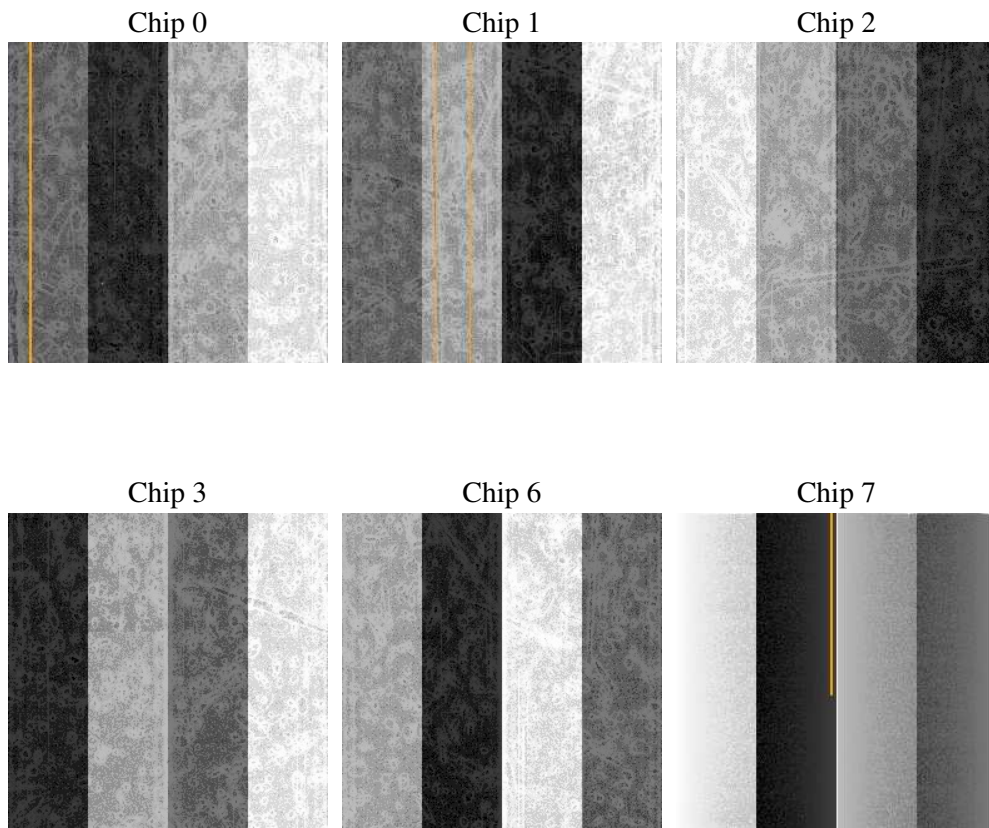
2 OBI

2.1 OBI

2.1.1 Images



2.1.2 Bias



2.1.3 Parameters

obi_num	0
ascdsver	7.6.8
caldbver	3.2.2
date	2006-07-11T14:02:50
revision	2

sched_exp_time	0.0
ontime	8465.5030819476
ontime0	5354.1682673097
ontime1	5474.0848552883
ontime2	5124.0589799285
ontime3	5234.2514714599
ontime6	5639.3746486008
ontime7	8465.5030819476
l1events	1539116

2.1.4 Events

	ccd 0	ccd 1	ccd 2	ccd 3	ccd 6	ccd 7
level 1 events	227915	235064	223631	227802	253179	371525
rejected events	32313	33637	33592	33430	37442	56183
rejected %	14%	14%	15%	14%	14%	15%

	ccd 0	ccd 1	ccd 2	ccd 3	ccd 6	ccd 7
grade 0 events	108509	110908	107487	109781	117480	55042
	47%	47%	48%	48%	46%	14%
grade 1 events	514	448	587	553	460	136
	0%	0%	0%	0%	0%	0%
grade 2 events	34100	36025	31490	32626	37403	96975
	14%	15%	14%	14%	14%	26%
grade 3 events	12562	12583	12216	12649	13232	22292
	5%	5%	5%	5%	5%	6%
grade 4 events	12421	12643	12245	12589	13207	22249
	5%	5%	5%	5%	5%	5%
grade 5 events	2274	2199	2085	2323	2532	6776
	0%	0%	0%	1%	1%	1%
grade 6 events	28133	29377	26718	26842	34523	118905
	12%	12%	11%	11%	13%	32%
grade 7 events	29402	30881	30803	30439	34342	49150
	12%	13%	13%	13%	13%	13%

2.2 Compared Parameters

Parameter	Planned	Actual	Parameter	Planned	Actual
Instrument	ACIS	ACIS	Obspar format version number	6	6
Detector	ACIS-012367	ACIS-012367	Obspar file type	PREDICTED	ACTUAL
Grating	NONE	NONE	Obspar update status	NONE	UPDATED
Data mode	FAINT	FAINT	On-chip summing requested	N	N
Observation mode	SECONDARY	SECONDARY	Subarray requested	NONE	NONE
Pointing RA	0	276.4269295564289	Alternating exposures requested	N	N
Pointing Dec	0	-38.01917877312151	Primary exposure time	0.000000	3.2
Pointing Roll	0.0	284.973578678868			
SIM focus pos (mm)	-0.782348	-0.6828225247311905			
SIM defocus (mm)	0	0.8505141146731063			
SIM translation stage pos (mm)	-233.592463	250.466033080201			
SIM translation stage offset (mm)	0	-0.01005468664627074			
Observation start time	177546453.278222	177546452.2535			
Observation start date	2003-08-17T22:27:33	2003-08-17T22:27:32			
Observation end time	177568306.279158	177568305.25443			
Observation end date	2003-08-18T04:31:46	2003-08-18T04:31:45			
Read mode	TIMED	TIMED			

2.3 Aspect

2.4 Star Slots

2.5 FID Slots

A Summary

A.1 Status

V&V Scientist	Beth Sundheim
V&V Date (YYYY-MM-DD)	2006.07.11
V&V Edition	1
V&V Disposition and Status	OK
V&V Charge Time	8.46333687

A.2 Comments

Focal plane temperature is warmer than -118 degrees during entire observation. The ACIS calibrations are not verified or necessarily applicable for focal plane temperatures warmer than -118 degrees.