

V&V Reference Report

L2 ASCDS Version : 7.6.7.1

Observation 60004 - L2 Version 001
Chandra X-Ray Center

L2 Processing Date : Apr 15 2006

Contents

1	Front	2
2	OBI	3
2.1	OBI	3
2.1.1	Images	3
2.1.2	Bias	3
2.1.3	Parameters	4
2.1.4	Events	4
2.2	Compared Parameters	5
2.3	Aspect	6
2.4	Star Slots	8
2.5	FID Slots	8
A	Summary	9
A.1	Status	9
A.2	Comments	9

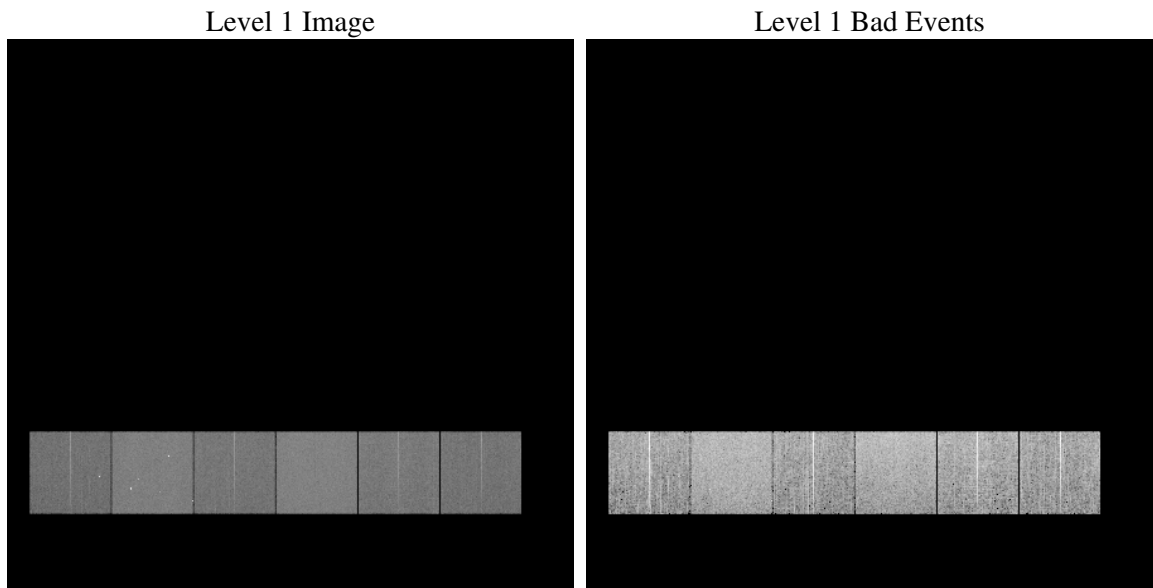
1 Front

seq_num	
obs_id	60004
title	ACIS-456789 diagnostics
observer	CHANDRA engineering request/realtime commanding
object	
dtcycle	0
cycle	P
ra_targ	0.0
dec_targ	0.0
ra_nom	49.96313920558
dec_nom	41.00666427353
roll_nom	133.7085291734
revision	2
ontime	7796.7713155448
livetime	7698.0439024954
ontime4	5317.5413951278
ontime5	7796.8123555481
ontime6	5891.1557977498
ontime7	7796.7713155448
ontime8	6072.7329933047
ontime9	5641.4764184952
l2events	1034119

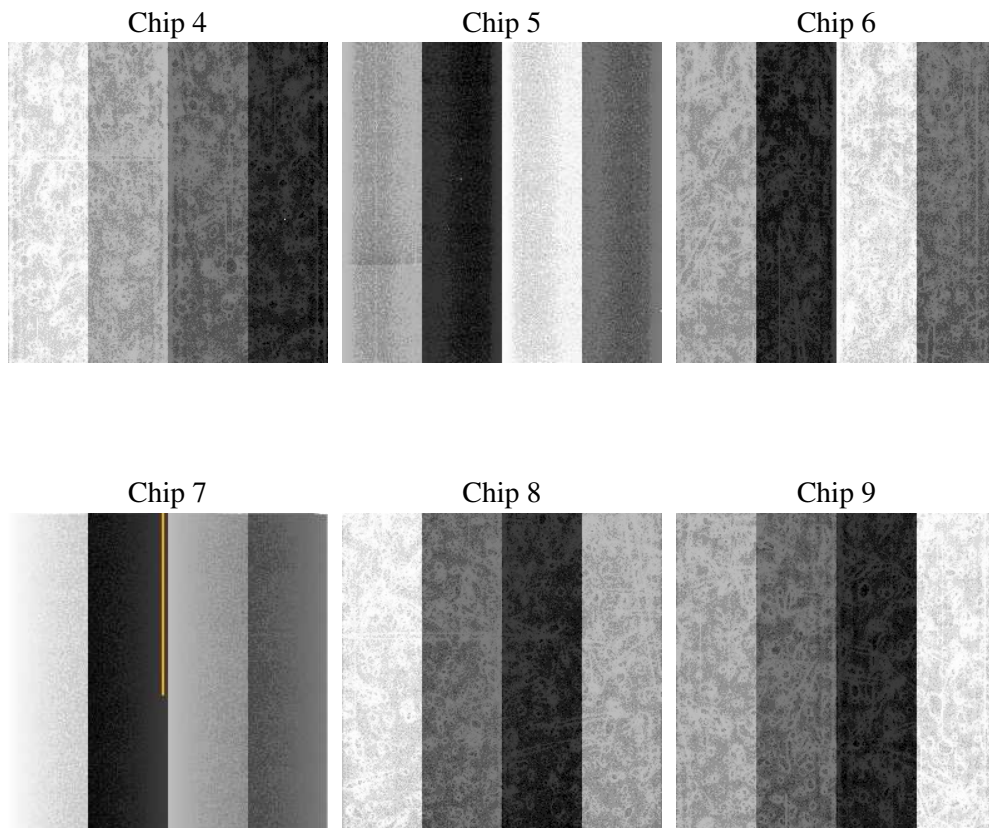
2 OBI

2.1 OBI

2.1.1 Images



2.1.2 Bias



2.1.3 Parameters

obi_num	0
ascdsver	7.6.7.1
caldsver	3.2.1
date	2006-04-15T18:00:22
revision	2

sched_exp_time	0.0
ontime	7797.8700285852
ontime4	5318.5169881582
ontime5	7797.8700285852
ontime6	5892.1724307835
ontime7	7797.8700285852
ontime8	6073.6675463617
ontime9	5642.6161715388
l1events	1411547

2.1.4 Events

	ccd 4	ccd 5	ccd 6	ccd 7	ccd 8	ccd 9
level 1 events	189339	276764	216656	291204	233969	203615
rejected events	45707	61782	46029	59235	53109	46150
rejected %	24%	22%	21%	20%	22%	22%

	ccd 4	ccd 5	ccd 6	ccd 7	ccd 8	ccd 9
grade 0 events	83448	28655	92695	40275	97827	86229
	44%	10%	42%	13%	41%	42%
grade 1 events	715	202	559	115	583	525
	0%	0%	0%	0%	0%	0%
grade 2 events	22918	97333	29386	69473	31915	26865
	12%	35%	13%	23%	13%	13%
grade 3 events	9723	7268	10764	16804	11926	10124
	5%	2%	4%	5%	5%	4%
grade 4 events	9538	7058	10748	16630	11797	10246
	5%	2%	4%	5%	5%	5%
grade 5 events	2596	6413	3046	7337	3642	3034
	1%	2%	1%	2%	1%	1%
grade 6 events	18005	74668	27034	88787	27395	24001
	9%	26%	12%	30%	11%	11%
grade 7 events	42396	55167	42424	51783	48884	42591
	22%	19%	19%	17%	20%	20%

2.2 Compared Parameters

Parameter	Planned	Actual	Parameter	Planned	Actual
Instrument	ACIS	ACIS	Obspar format version number	6	6
Detector	ACIS-456789	ACIS-456789	Obspar file type	PREDICTED	ACTUAL
Grating	NONE	NONE	Obspar update status	NONE	UPDATED
Data mode	FAINT	FAINT	On-chip summing requested	N	N
Observation mode	SECONDARY	SECONDARY	Subarray requested	NONE	NONE
Pointing RA	0	49.96313920557994	Alternating exposures requested	N	N
Pointing Dec	0	41.0066642735296	Primary exposure time	3.2	3.2
Pointing Roll	0.0	133.7085291733997			
SIM focus pos (mm)	-0.684267	-0.6828225247311905			
SIM defocus (mm)	0	0.8505141146731063			
SIM translation stage pos (mm)	-190.132523	250.4635187648994			
SIM translation stage offset (mm)	0	-0.007540371344731511			
Observation start time	214291550.739089	214291549.71408			
Observation start date	2004-10-16T05:25:51	2004-10-16T05:25:49			
Observation end time	214306985.189779	214306984.16477			
Observation end date	2004-10-16T09:43:05	2004-10-16T09:43:04			
Read mode	TIMED	TIMED			

2.3 Aspect

2.4 Star Slots

2.5 FID Slots

A Summary

A.1 Status

V&V Scientist	Beth Sundheim
V&V Date (YYYY-MM-DD)	2006.04.16
V&V Edition	1
V&V Disposition and Status	OK
V&V Charge Time	7.79677131

A.2 Comments