

V&V Reference Report

L2 ASCDS Version : 7.6.11.10

Observation 59874 - L2 Version 3
Chandra X-Ray Center

L2 Processing Date : Feb 4 2009

Contents

1	Front	2
2	OBI	3
2.1	OBI	3
2.1.1	Images	3
2.1.2	Bias	3
2.1.3	Parameters	4
2.1.4	Events	4
2.2	Compared Parameters	5
2.3	Star Slots	6
2.4	FID Slots	6
A	Summary	7
A.1	Status	7
A.2	Comments	7

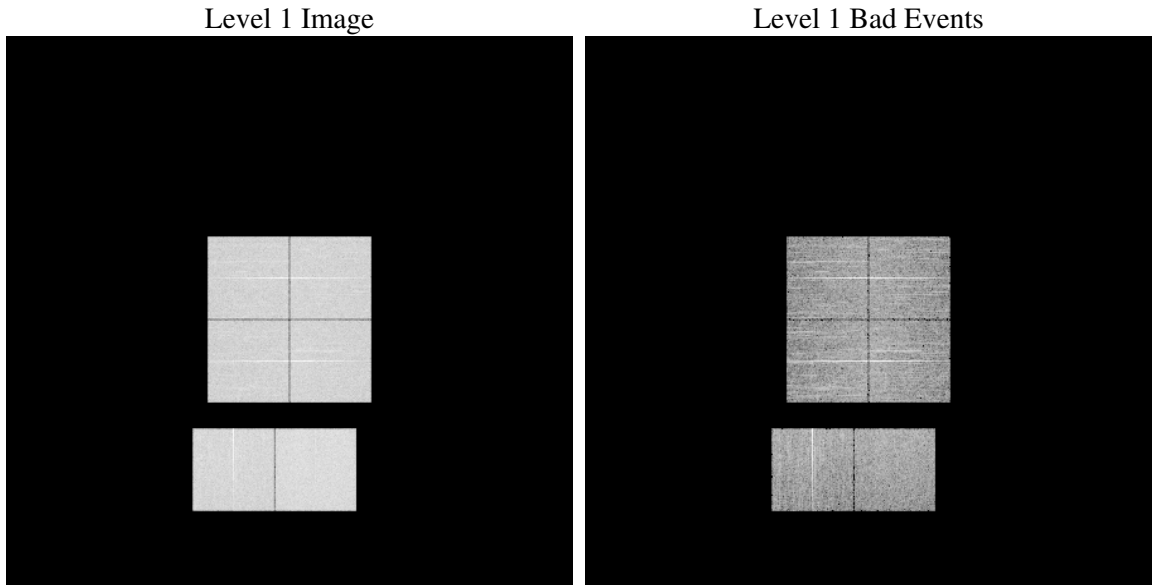
1 Front

seq_num	
obs_id	59874
title	ACIS-012367 diagnostics
observer	CHANDRA engineering request/realtime commanding
object	
dtcycle	0
cycle	P
ra_targ	0.0
dec_targ	0.0
ra_nom	142.99168245571
dec_nom	16.027491841336
roll_nom	73.442676585536
revision	3
ontime	7692.7999713421
livetime	7595.3891060569
ontime0	6684.8535702825
ontime1	6853.3844673336
ontime2	6467.707272321
ontime3	6671.8893704116
ontime6	7067.289904356
ontime7	7692.7999713421
l2events	1066701

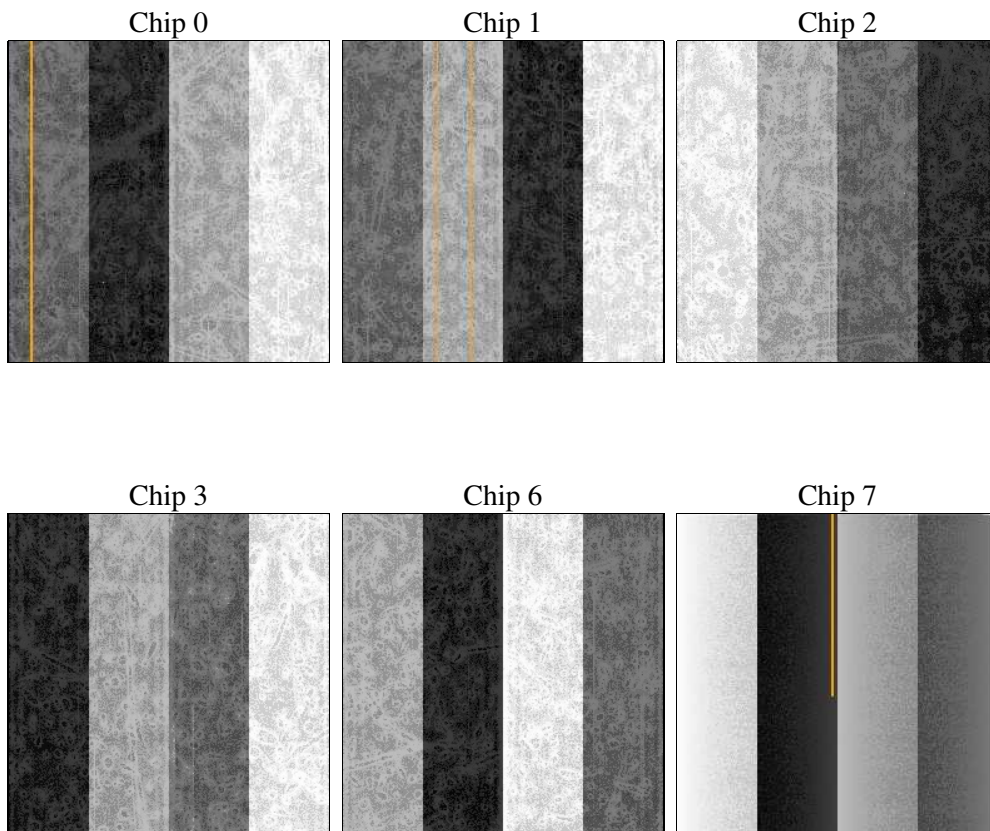
2 OBI

2.1 OBI

2.1.1 Images



2.1.2 Bias



2.1.3 Parameters

obi_num	0
ascdsver	7.6.11.10
caldsver	3.5.1
date	2009-02-04T14:45:22
revision	3

sched_exp_time	6420
ontime	7692.7999713421
ontime0	6684.8535702825
ontime1	6853.3844673336
ontime2	6467.707272321
ontime3	6671.8893704116
ontime6	7067.289904356
ontime7	7692.7999713421
l1events	1409377

2.1.4 Events

	ccd 0	ccd 1	ccd 2	ccd 3	ccd 6	ccd 7
level 1 events	220589	226428	219860	226330	245473	270697
rejected events	45843	46880	48463	49202	51144	47560
rejected %	20%	20%	22%	21%	20%	17%

	ccd 0	ccd 1	ccd 2	ccd 3	ccd 6	ccd 7
grade 0 events	97726	99296	97491	101089	106556	54523
	44%	43%	44%	44%	43%	20%
grade 1 events	557	476	567	506	513	173
	0%	0%	0%	0%	0%	0%
grade 2 events	30950	33067	28983	30399	34292	49828
	14%	14%	13%	13%	13%	18%
grade 3 events	11435	11413	11283	11691	11925	22400
	5%	5%	5%	5%	4%	8%
grade 4 events	11325	11676	11333	11532	12343	22236
	5%	5%	5%	5%	5%	8%
grade 5 events	2784	2880	2591	2879	3220	7776
	1%	1%	1%	1%	1%	2%
grade 6 events	25820	26842	24519	24910	31802	77473
	11%	11%	11%	11%	12%	28%
grade 7 events	39992	40778	43093	43324	44822	36288
	18%	18%	19%	19%	18%	13%

2.2 Compared Parameters

Parameter	Planned	Actual	Parameter	Planned	Actual
Instrument	ACIS	ACIS	Obspar format version number	6	6
Detector	ACIS-012367	ACIS-012367	Obspar file type	PREDICTED	ACTUAL
Grating	NONE	NONE	Obspar update status	OVERRIDE	OVERRIDE
Data mode	FAINT	FAINT	Number of optional ACIS chips dropped	0	0
Observation mode	SECONDARY	SECONDARY	On-chip summing requested	N	N
Pointing RA	142.9916824557134	142.9916824557134	Subarray requested	NONE	NONE
Pointing Dec	16.027491841336	16.027491841336	Alternating exposures requested	N	N
Pointing Roll	73.44267658553636	73.44267658553636	Primary exposure time	3.2	3.2
SIM focus pos (mm)	-0.68282252473119	-0.68282252473119			
SIM defocus (mm)	0.8505140384245534	0.8505140384245534			
SIM translation stage pos (mm)	250.4635187649	250.4635187649			
SIM translation stage offset (mm)	-0.007542945905271381	-0.007542945905271381			
Observation start time	221374096.057257	221374096.057257			
Observation start date	2005-01-06T05:01:00	2005-01-06T04:48:16			
Observation end time	221383613.897037	221383613.897037			
Observation end date	2005-01-06T06:48:00	2005-01-06T07:26:53			
Read mode	TIMED	TIMED			

2.3 Star Slots

2.4 FID Slots

A Summary

A.1 Status

V&V Scientist	Beth Sundheim
V&V Date (YYYY-MM-DD)	2009.02.05
V&V Edition	1
V&V Disposition and Status	OK
V&V Charge Time	7.69279997

A.2 Comments

This obsid was reprocessed to correct minor errors in parameters used in processing. Some of these parameters cannot be determined automatically for this observation and were derived from spacecraft telemetry.

Focal plane temperature is warmer than -118.7 C degrees throughout this observation. The ACIS spectral response calibration for the front-illuminated chips is less accurate at these warmer temperatures than it is at -119.7 C. The back-illuminated chips are not affected at the focal plane temperatures recorded for this observation.