

V&V Reference Report

L2 ASCDS Version : 7.6.7.1

Observation 59644 - L2 Version 002
Chandra X-Ray Center

L2 Processing Date : Mar 8 2006

Contents

1	Front	2
2	OBI	3
2.1	OBI	3
2.1.1	Images	3
2.1.2	Bias	3
2.1.3	Parameters	4
2.1.4	Events	4
2.2	Compared Parameters	5
2.3	Aspect	6
2.4	Star Slots	8
2.5	FID Slots	8
A	Summary	9
A.1	Status	9
A.2	Comments	9

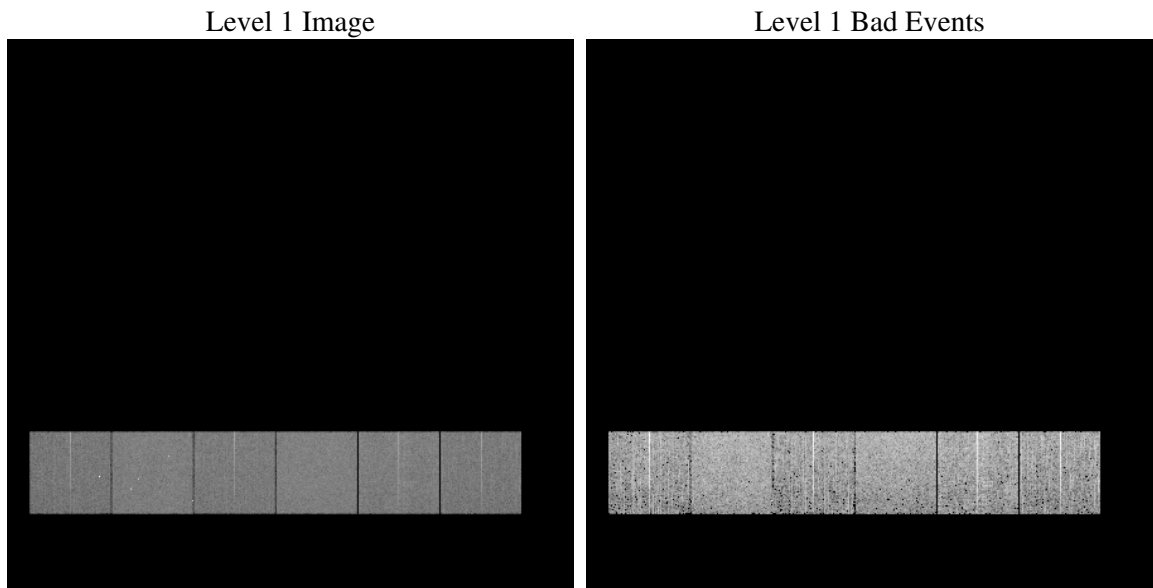
1 Front

seq_num	
obs_id	59644
title	ACIS-456789 diagnostics
observer	CHANDRA engineering request/realtime commanding
object	
dtcycle	0
cycle	P
ra_targ	0.0
dec_targ	0.0
ra_nom	232.48529314045
dec_nom	4.4754533904057
roll_nom	206.25357466601
revision	2
ontime	4310.3121715486
livetime	4255.7324034741
ontime4	3633.0373340249
ontime5	4310.3532115519
ontime6	3856.658590734
ontime7	4310.3121715486
ontime8	3979.8210947812
ontime9	3833.848798722
l2events	563137

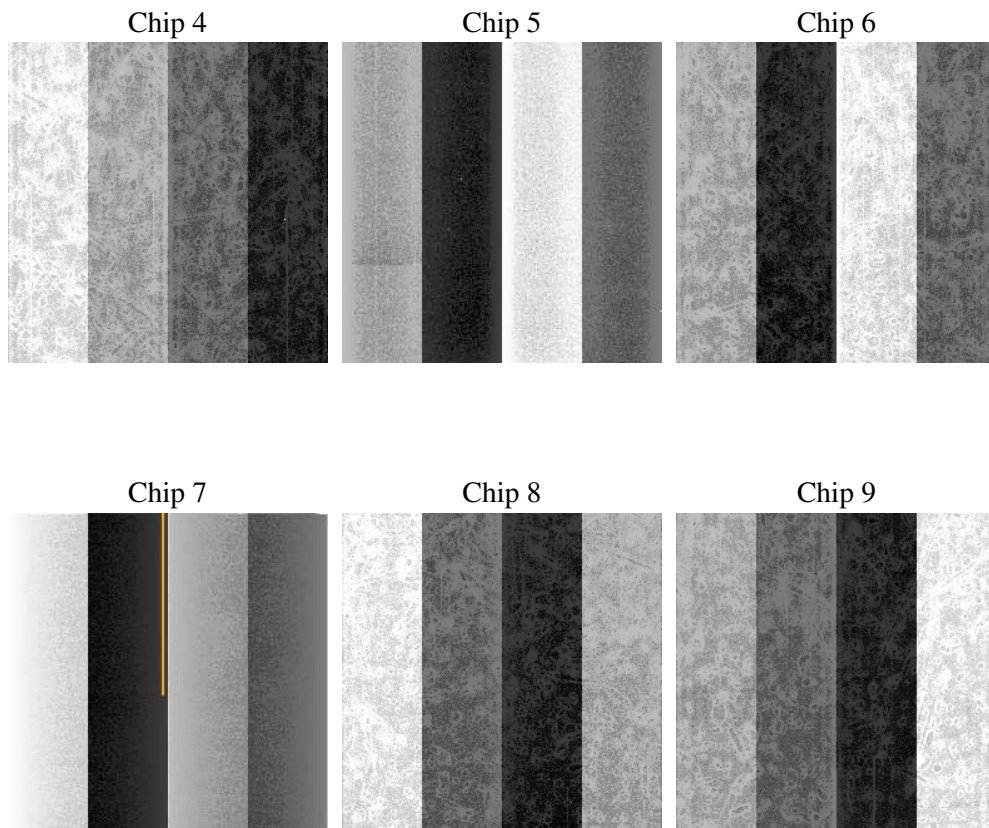
2 OBI

2.1 OBI

2.1.1 Images



2.1.2 Bias



2.1.3 Parameters

obi_num	0
ascdsver	7.6.7.1
caldbver	3.2.1
date	2006-03-09T00:58:29
revision	2

sched_exp_time	0.0
ontime	4310.5332563519
ontime4	3633.1706064343
ontime5	4310.5332563519
ontime6	3856.7975955307
ontime7	4310.5332563519
ontime8	3979.9543671906
ontime9	3834.1109235287
l1events	787575

2.1.4 Events

	ccd 4	ccd 5	ccd 6	ccd 7	ccd 8	ccd 9
level 1 events	115341	138481	127246	145125	138087	123295
rejected events	29119	33982	29597	31464	33219	29801
rejected %	25%	24%	23%	21%	24%	24%

	ccd 4	ccd 5	ccd 6	ccd 7	ccd 8	ccd 9
grade 0 events	50131	12740	52841	19838	56574	51066
	43%	9%	41%	13%	40%	41%
grade 1 events	391	106	305	50	288	296
	0%	0%	0%	0%	0%	0%
grade 2 events	13422	47716	16893	34146	18458	16104
	11%	34%	13%	23%	13%	13%
grade 3 events	5762	3378	6130	8165	6978	6061
	4%	2%	4%	5%	5%	4%
grade 4 events	5787	3334	6115	8076	6905	5965
	5%	2%	4%	5%	5%	4%
grade 5 events	1743	3349	1860	3766	2372	2009
	1%	2%	1%	2%	1%	1%
grade 6 events	11120	37331	15670	43436	15953	14298
	9%	26%	12%	29%	11%	11%
grade 7 events	26985	30527	27432	27648	30559	27496
	23%	22%	21%	19%	22%	22%

2.2 Compared Parameters

Parameter	Planned	Actual	Parameter	Planned	Actual
Instrument	ACIS	ACIS	Obspar format version number	6	6
Detector	ACIS-456789	ACIS-456789	Obspar file type	PREDICTED	ACTUAL
Grating	NONE	NONE	Obspar update status	NONE	UPDATED
Data mode	FAINT	FAINT	On-chip summing requested	N	N
Observation mode	SECONDARY	SECONDARY	Subarray requested	NONE	NONE
Pointing RA	0	232.4852931404528	Alternating exposures requested	N	N
Pointing Dec	0	4.475453390405689	Primary exposure time	3.2	3.2
Pointing Roll	0.0	206.2535746660058			
SIM focus pos (mm)	-0.684267	-0.6828225247311905			
SIM defocus (mm)	0	0.8505141146731063			
SIM translation stage pos (mm)	-190.132523	250.466033080201			
SIM translation stage offset (mm)	0	-0.01005468664627074			
Observation start time	233710834.666757	233710833.64175			
Observation start date	2005-05-28T23:40:35	2005-05-28T23:40:33			
Observation end time	233748044.218454	233748043.19344			
Observation end date	2005-05-29T10:00:44	2005-05-29T10:00:43			
Read mode	TIMED	TIMED			

2.3 Aspect

2.4 Star Slots

2.5 FID Slots

A Summary

A.1 Status

V&V Scientist	Beth Sundheim
V&V Date (YYYY-MM-DD)	2006.03.09
V&V Edition	1
V&V Disposition and Status	OK
V&V Charge Time	4.31031217

A.2 Comments