

V&V Reference Report

L2 ASCDS Version : 7.6.7.1

Observation 59484 - L2 Version 002
Chandra X-Ray Center

L2 Processing Date : Mar 23 2006

Contents

1	Front	2
2	OBI	3
2.1	OBI	3
2.1.1	Images	3
2.1.2	Bias	3
2.1.3	Parameters	4
2.1.4	Events	4
2.2	Compared Parameters	5
2.3	Aspect	6
2.4	Star Slots	8
2.5	FID Slots	8
A	Summary	9
A.1	Status	9
A.2	Comments	9

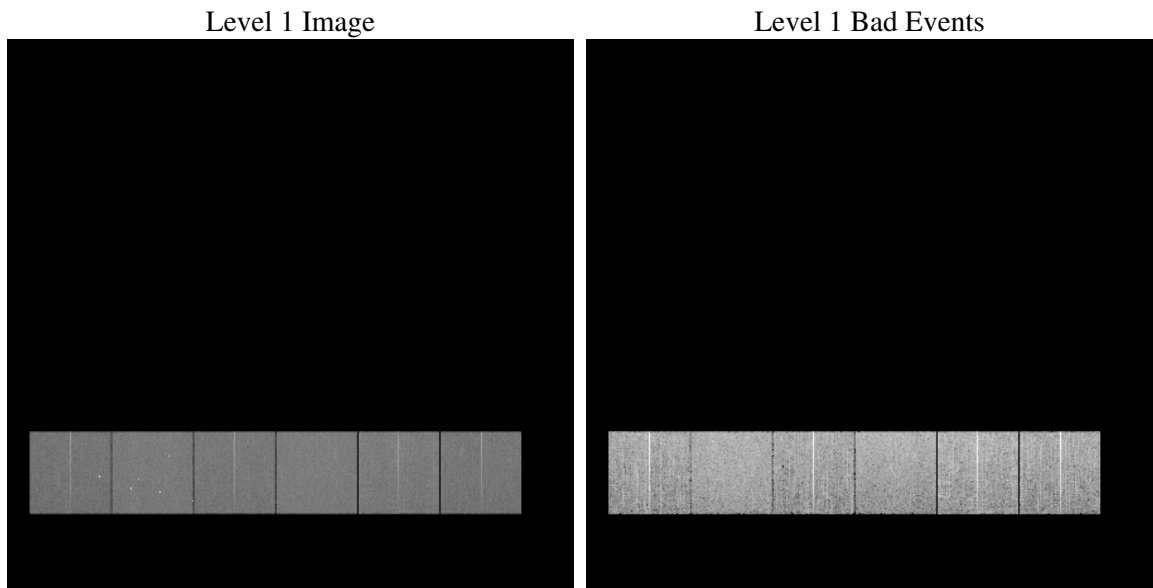
1 Front

seq_num	
obs_id	59484
title	ACIS-456789 diagnostics
observer	CHANDRA engineering request/realtime commanding
object	
dtcycle	0
cycle	P
ra_targ	0.0
dec_targ	0.0
ra_nom	121.97551692527
dec_nom	-24.289580238712
roll_nom	126.40439719386
revision	2
ontime	7795.1999709606
livetime	7696.4924552224
ontime4	6636.4670127928
ontime5	7795.1999709606
ontime6	7150.2491413057
ontime7	7795.1999709606
ontime8	7437.0256547928
ontime9	6988.2008169889
l2events	989496

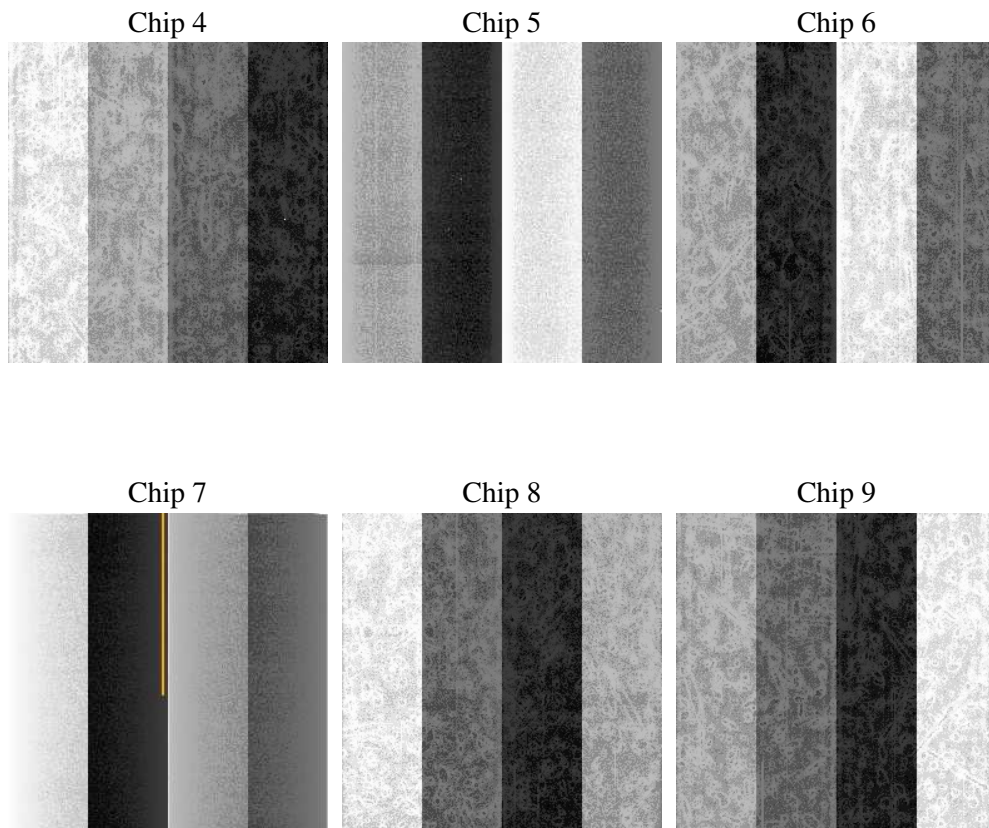
2 OBI

2.1 OBI

2.1.1 Images



2.1.2 Bias



2.1.3 Parameters

obi_num	1
ascdsver	7.6.7.1
caldbver	3.2.1
date	2006-03-24T00:55:04
revision	2

sched_exp_time	0.0
ontime	7797.844047904
ontime4	6637.5797331333
ontime5	7797.844047904
ontime6	7152.8932182491
ontime7	7797.844047904
ontime8	7438.0973351598
ontime9	6990.8448939323
l1events	1402690

2.1.4 Events

	ccd 4	ccd 5	ccd 6	ccd 7	ccd 8	ccd 9
level 1 events	206229	245617	228411	252753	250867	218813
rejected events	55388	59780	54449	55792	63038	56118
rejected %	26%	24%	23%	22%	25%	25%

	ccd 4	ccd 5	ccd 6	ccd 7	ccd 8	ccd 9
grade 0 events	87309	23961	93594	34004	100932	88904
	42%	9%	40%	13%	40%	40%
grade 1 events	718	154	508	115	550	584
	0%	0%	0%	0%	0%	0%
grade 2 events	23722	83894	30405	58881	33240	27940
	11%	34%	13%	23%	13%	12%
grade 3 events	10041	5975	10934	14241	12185	10468
	4%	2%	4%	5%	4%	4%
grade 4 events	10122	5952	10917	13912	12442	10519
	4%	2%	4%	5%	4%	4%
grade 5 events	3104	5920	3396	6523	4344	3664
	1%	2%	1%	2%	1%	1%
grade 6 events	19647	66055	28112	75923	29030	24864
	9%	26%	12%	30%	11%	11%
grade 7 events	51566	53706	50545	49154	58144	51870
	25%	21%	22%	19%	23%	23%

2.2 Compared Parameters

Parameter	Planned	Actual	Parameter	Planned	Actual
Instrument	ACIS	ACIS	Obspar format version number	6	6
Detector	ACIS-456789	ACIS-456789	Obspar file type	PREDICTED	ACTUAL
Grating	NONE	NONE	Obspar update status	NONE	UPDATED
Data mode	FAINT	FAINT	On-chip summing requested	N	N
Observation mode	SECONDARY	SECONDARY	Subarray requested	NONE	NONE
Pointing RA	0	121.9755169252666	Alternating exposures requested	N	N
Pointing Dec	0	-24.28958023871217	Primary exposure time	3.2	3.2
Pointing Roll	0.0	126.4043971938564			
SIM focus pos (mm)	-0.684267	-0.6828225247311905			
SIM defocus (mm)	0	0.8505141146731063			
SIM translation stage pos (mm)	-190.132523	250.466033080201			
SIM translation stage offset (mm)	0	-0.01005468664627074			
Observation start time	241930578.592828	241930577.56784			
Observation start date	2005-09-01T02:56:19	2005-09-01T02:56:17			
Observation end time	241950100.743723	241950099.71874			
Observation end date	2005-09-01T08:21:41	2005-09-01T08:21:39			
Read mode	TIMED	TIMED			

2.3 Aspect

2.4 Star Slots

2.5 FID Slots

A Summary

A.1 Status

V&V Scientist	Jen Lauer
V&V Date (YYYY-MM-DD)	2006.03.24
V&V Edition	1
V&V Disposition and Status	OK
V&V Charge Time	7.79519997

A.2 Comments