

V&V Reference Report

L2 ASCDS Version : 7.6.7.1

Observation 5834 - L2 Version 002
Chandra X-Ray Center

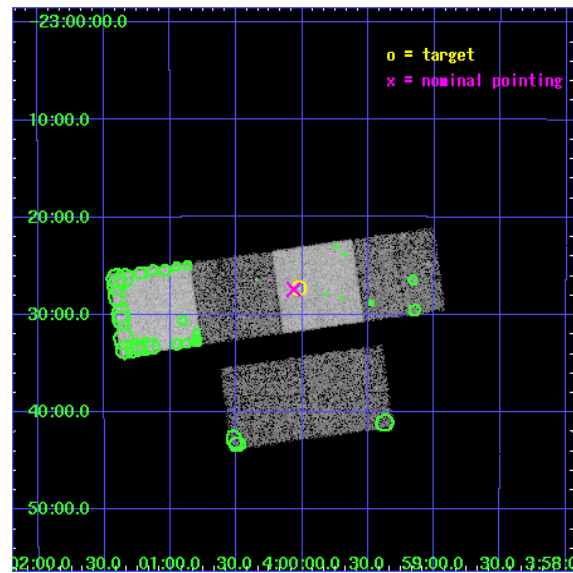
L2 Processing Date : Apr 10 2006

Contents

1	Front	2
2	OBI	3
2.1	OBI	3
2.1.1	Images	3
2.1.2	Bias	3
2.1.3	Parameters	4
2.1.4	Events	4
2.2	Compared Parameters	5
2.3	Aspect	6
2.4	Star Slots	9
2.4.1	Slot 3	9
2.4.2	Slot 4	10
2.4.3	Slot 5	11
2.4.4	Slot 6	12
2.4.5	Slot 7	13
2.5	FID Slots	14
2.5.1	Slot 0	14
2.5.2	Slot 1	15
2.5.3	Slot 2	16
3	Point Sources	17
A	Summary	18
A.1	Status	18
A.2	Comments	18

1 Front

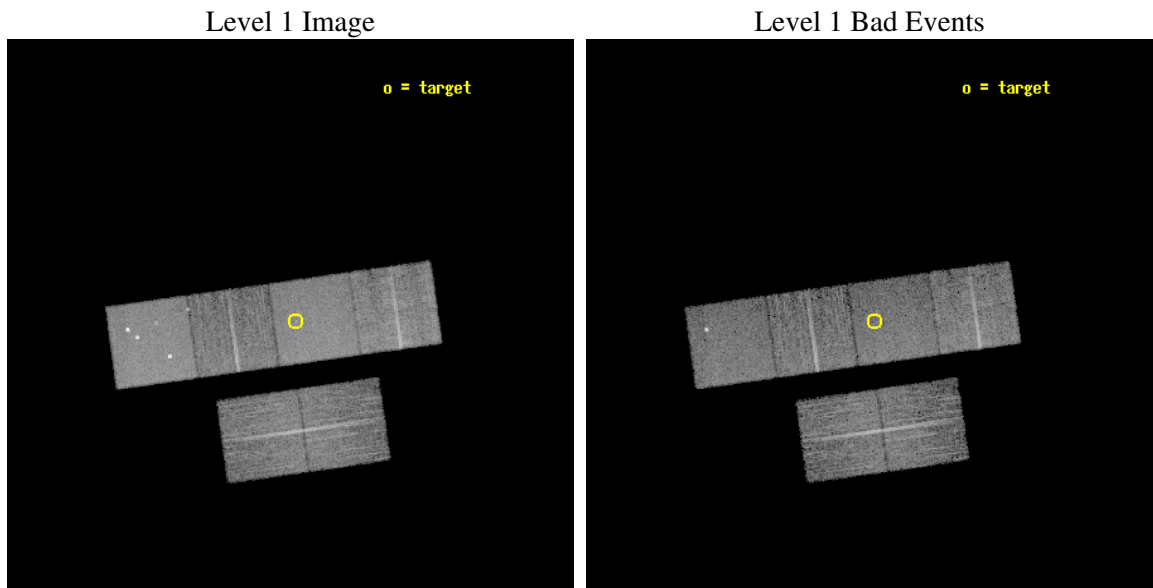
seq_num	800543
obs_id	5834
title	X-ray emission from clusters of galaxies from the REFLEX sample.
observer	Dr. Peter Predehl
object	BMW040001.4-232715
dtcycle	0
cycle	P
ra_targ	60.005833
dec_targ	-23.454167
ra_nom	60.015853502775
dec_nom	-23.457143707817
roll_nom	351.98455901884
revision	2
ontime	8953.5999666452
livetime	8840.2240926569
ontime2	8953.5999666452
ontime3	8953.5999666452
ontime5	8953.5999666452
ontime6	8953.5999666452
ontime7	8953.5999666452
ontime8	8953.5999666452
l2events	105812



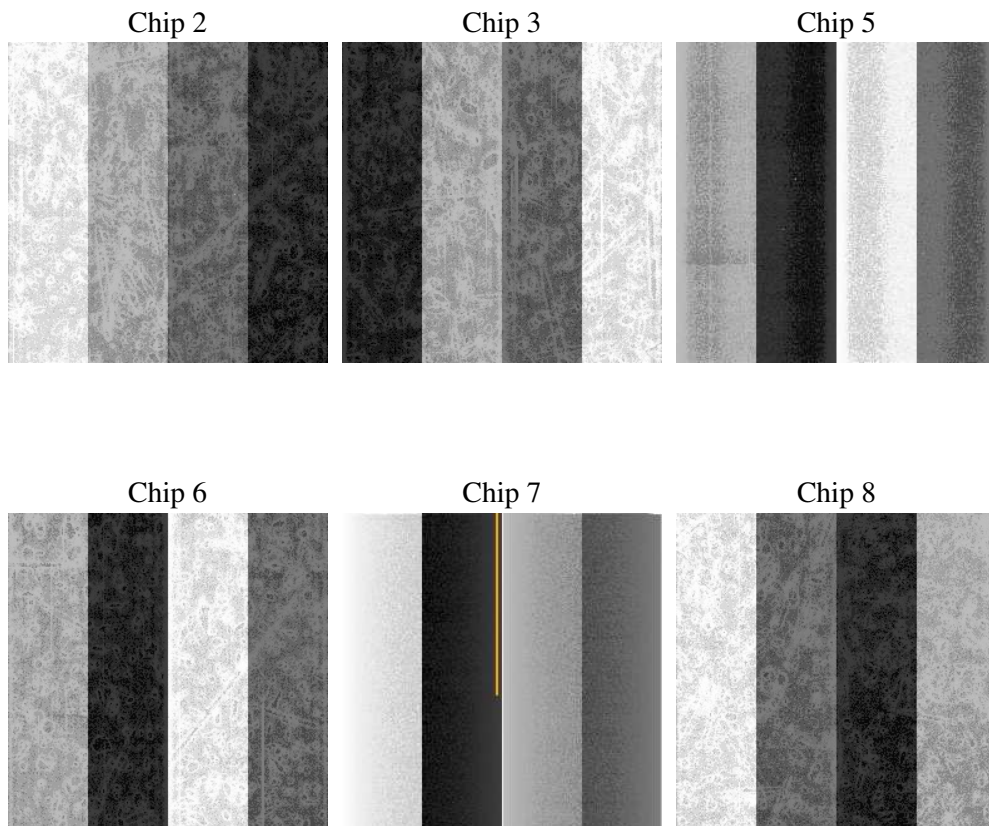
2 OBI

2.1 OBI

2.1.1 Images



2.1.2 Bias



2.1.3 Parameters

obi_num	0
ascdsver	7.6.7.1
caldsver	3.2.1
date	2006-04-10T22:45:19
revision	2

sched_exp_time	9000.000000
ontime	8958.1526728868
ontime2	8958.1526728868
ontime3	8961.3936830461
ontime5	8961.3936830461
ontime6	8961.3936830461
ontime7	8958.1526728868
ontime8	8961.3936830461
l1events	490893

2.1.4 Events

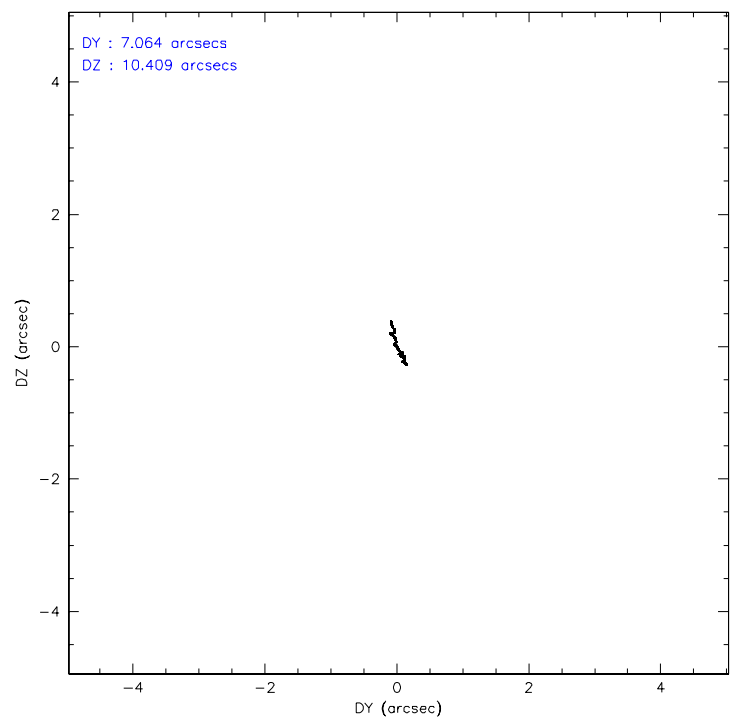
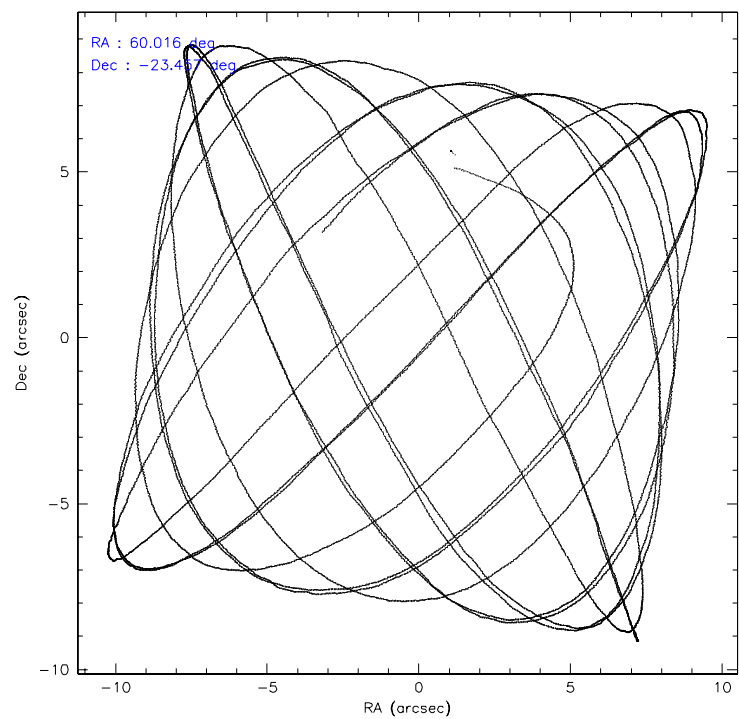
	ccd 2	ccd 3	ccd 5	ccd 6	ccd 7	ccd 8
level 1 events	70198	66223	106094	67476	92008	88894
rejected events	62147	58414	58084	59367	56667	69953
rejected %	88%	88%	54%	87%	61%	78%

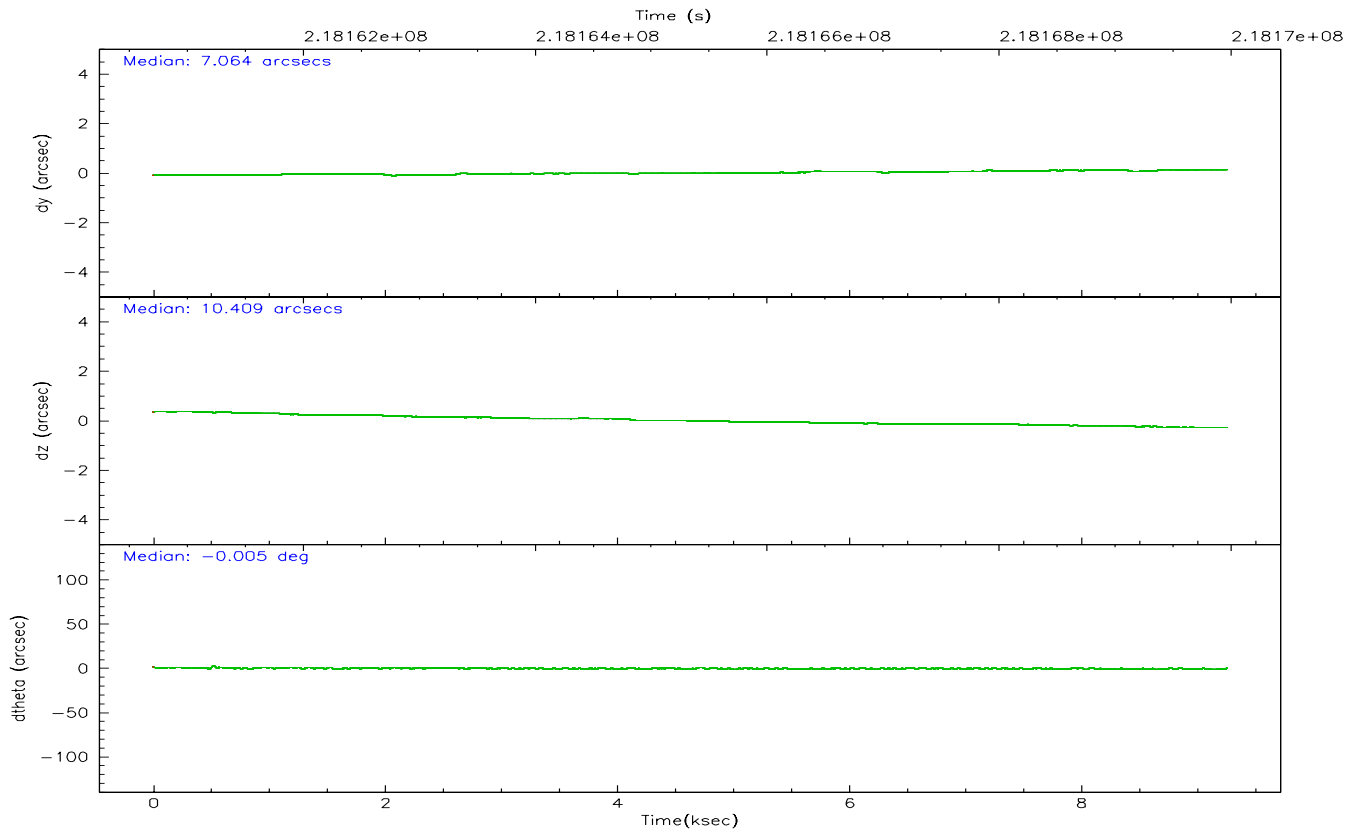
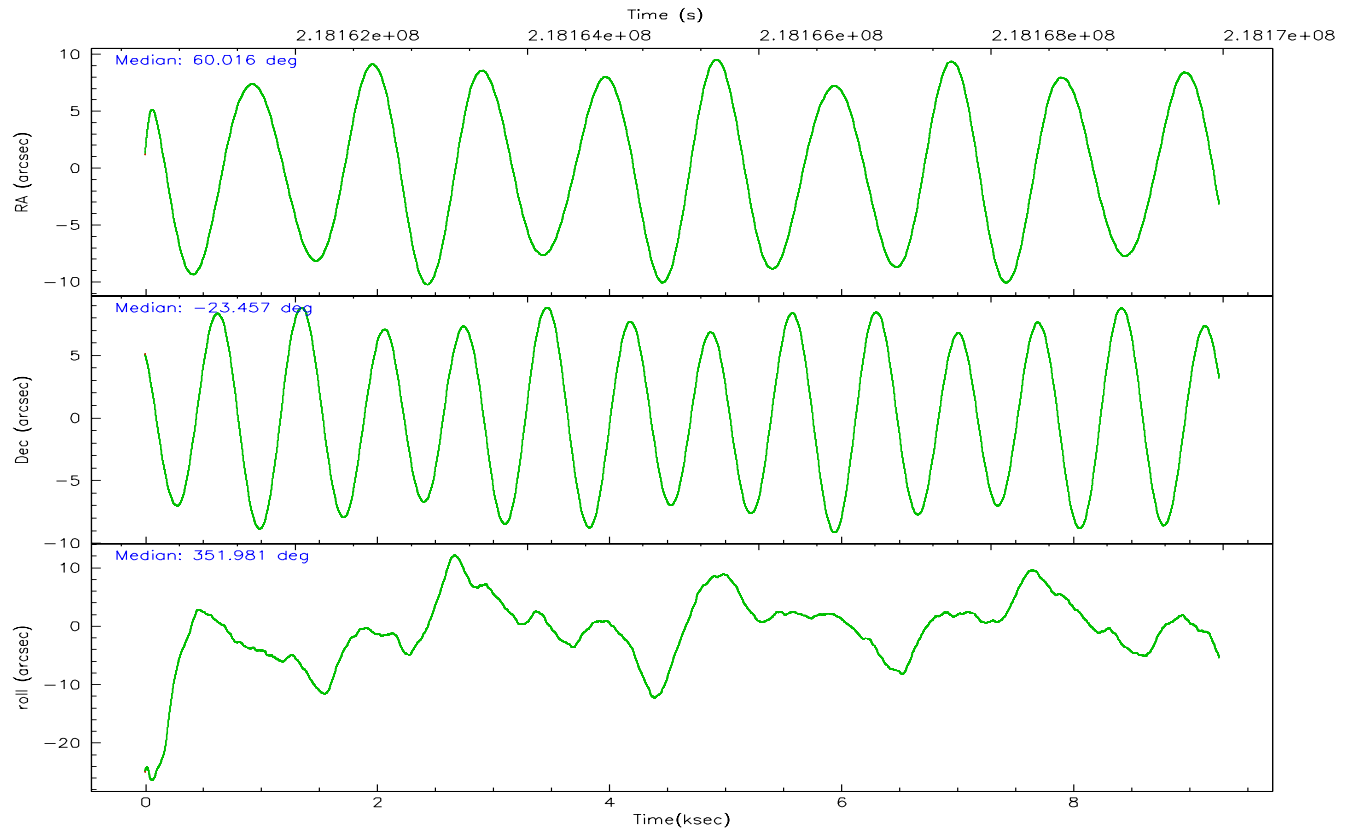
	ccd 2	ccd 3	ccd 5	ccd 6	ccd 7	ccd 8
grade 0 events	3444	3433	5715	3278	1999	5960
	4%	5%	5%	4%	2%	6%
grade 1 events	40	30	95	34	53	61
	0%	0%	0%	0%	0%	0%
grade 2 events	1662	1494	14484	1669	8779	4141
	2%	2%	13%	2%	9%	4%
grade 3 events	762	749	1000	788	1741	1979
	1%	1%	0%	1%	1%	2%
grade 4 events	773	776	883	777	1706	1868
	1%	1%	0%	1%	1%	2%
grade 5 events	2652	3115	5786	3143	6086	4179
	3%	4%	5%	4%	6%	4%
grade 6 events	1411	1363	25967	1603	21125	5003
	2%	2%	24%	2%	22%	5%
grade 7 events	59454	55263	52164	56184	50519	65703
	84%	83%	49%	83%	54%	73%

2.2 Compared Parameters

Parameter	Planned	Actual	Parameter	Planned	Actual
Instrument	ACIS	ACIS	Obspar format version number	6	6
Detector	ACIS-235678	ACIS-235678	Obspar file type	PREDICTED	ACTUAL
Grating	NONE	NONE	Obspar update status	NONE	UPDATED
Data mode	FAINT	FAINT	On-chip summing requested	N	N
Observation mode	POINTING	POINTING	Subarray requested	NONE	NONE
Pointing RA	59.988483	60.01585350277492	Alternating exposures requested	N	N
Pointing Dec	-23.467703	-23.4571437078169	Primary exposure time	0.000000	3.2
Pointing Roll	351.817016	351.9845590188419			
SIM focus pos (mm)	-0.684267	-0.6828225247311905			
SIM defocus (mm)	0	0.001444936568705701			
SIM translation stage pos (mm)	-190.132523	-190.1400660498719			
SIM translation stage offset (mm)	0	0.00754346686406393			
Observation start time	218160961.184000	218159964.46255			
Observation start date	2004-11-30T00:14:57	2004-11-29T23:59:24			
Observation end time	218169961.184000	218171023.18804			
Observation end date	2004-11-30T02:44:57	2004-11-30T03:03:43			
Read mode	TIMED	TIMED			

2.3 Aspect



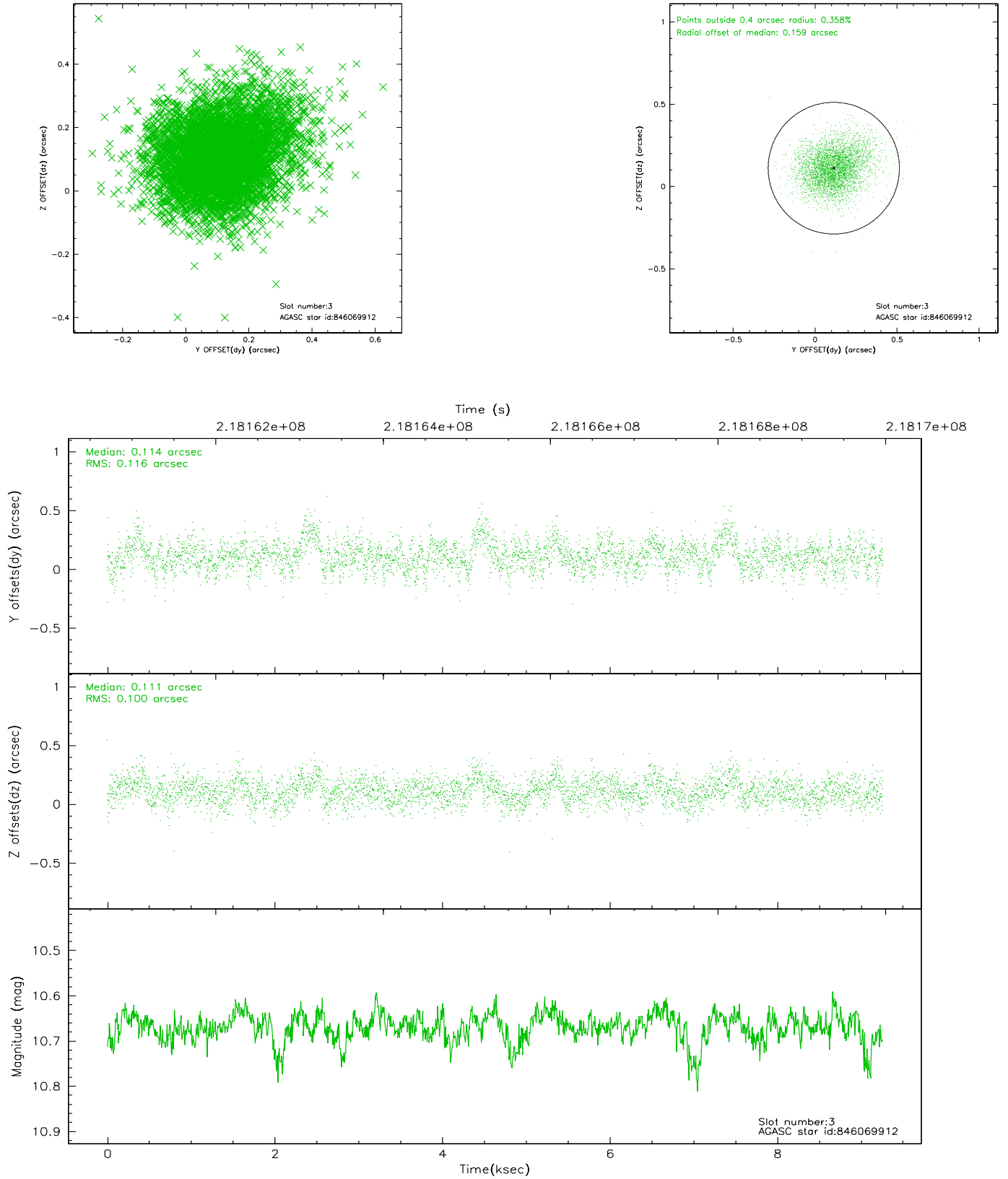


Slot Statistics

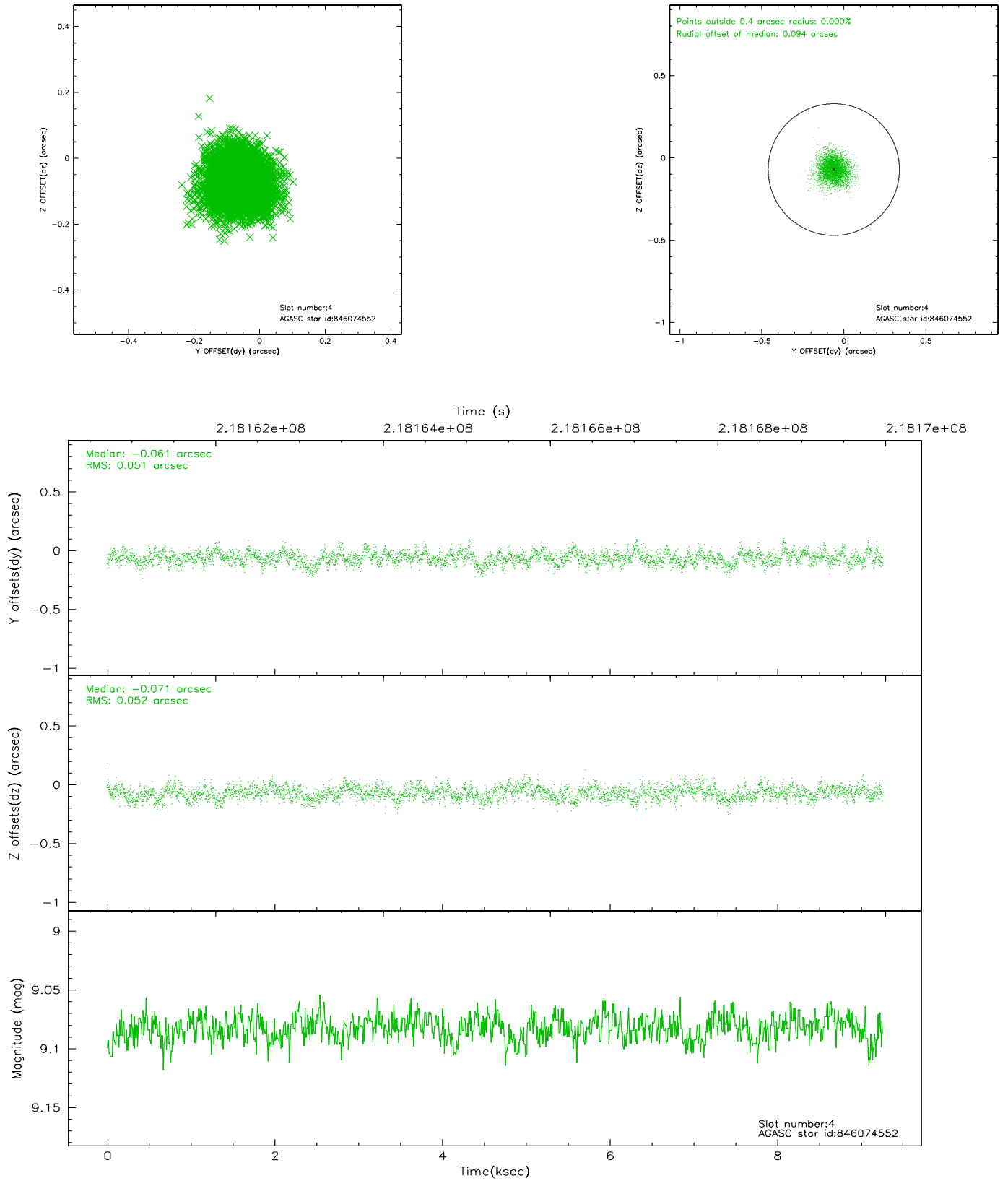
slot	status	id	mag	n_pts	med_dy	med_dz	dr1	dr2	ra	dec	mean_y	mean_z
0	FID	ACIS-S-2	7.10	2260	-0.038	0.008	0.008	0.013	0.000000	0.000000	-759.83	-1731.70
1	FID	ACIS-S-4	7.21	2260	0.035	0.016	0.008	0.014	0.000000	0.000000	2153.21	176.25
2	FID	ACIS-S-5	7.23	2260	-0.029	-0.015	0.008	0.014	0.000000	0.000000	-1811.95	170.47
3	GUIDE	846069912	10.67	4474	0.114	0.111	0.161	0.264	60.678664	-22.958779	2004.84	2134.10
4	GUIDE	846074552	9.08	4518	-0.061	-0.071	0.077	0.127	59.979556	-23.182910	-174.44	1010.33
5	GUIDE	846076448	9.11	4519	-0.022	-0.016	0.088	0.139	59.738165	-23.143037	-986.41	1038.41
6	GUIDE	846077584	9.63	4519	0.070	-0.035	0.092	0.155	59.317984	-23.520588	-2162.80	-508.54
7	GUIDE	846079432	8.86	4515	-0.099	0.010	0.076	0.123	59.562661	-23.940040	-1144.72	-1884.94

2.4 Star Slots

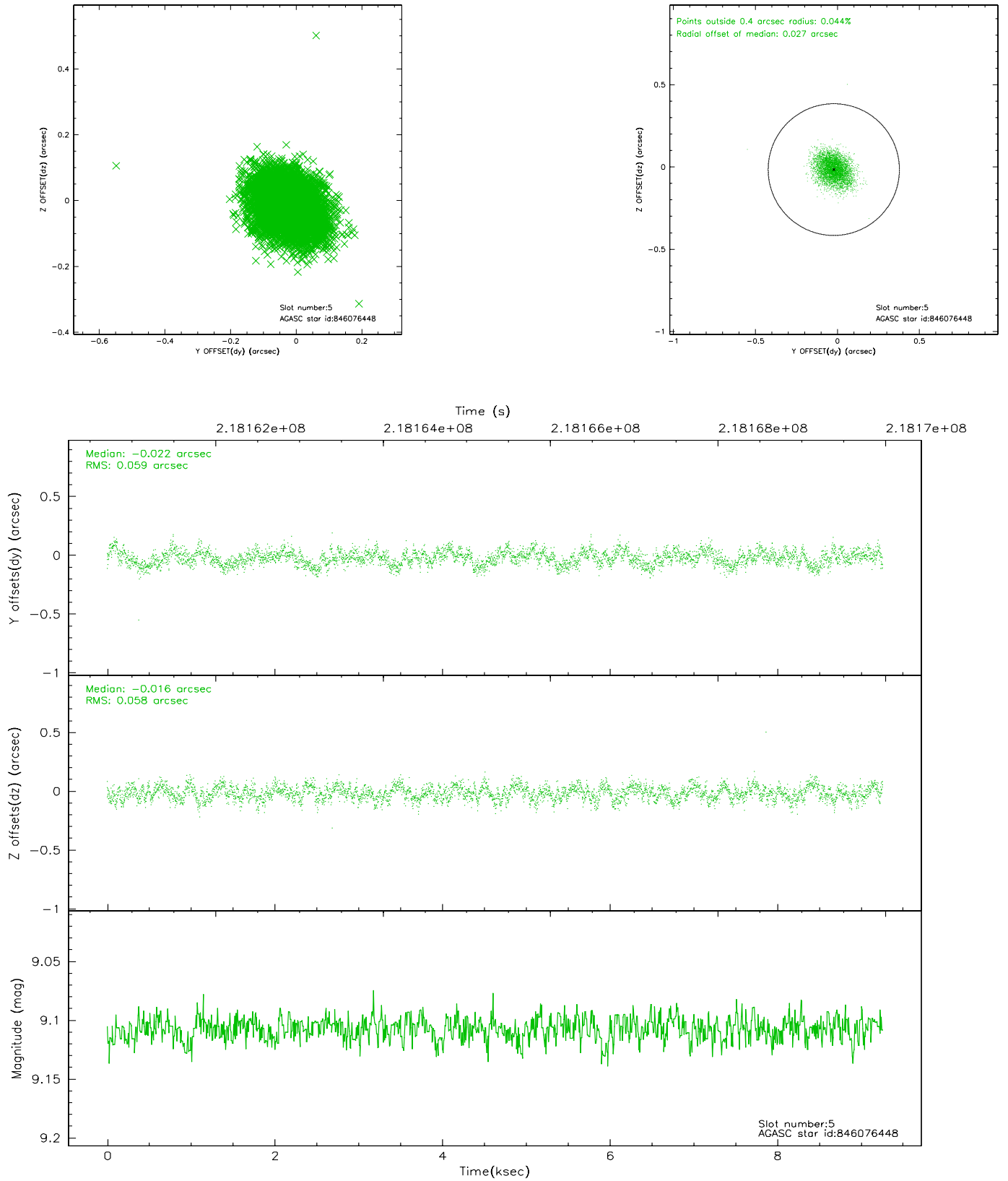
2.4.1 Slot 3



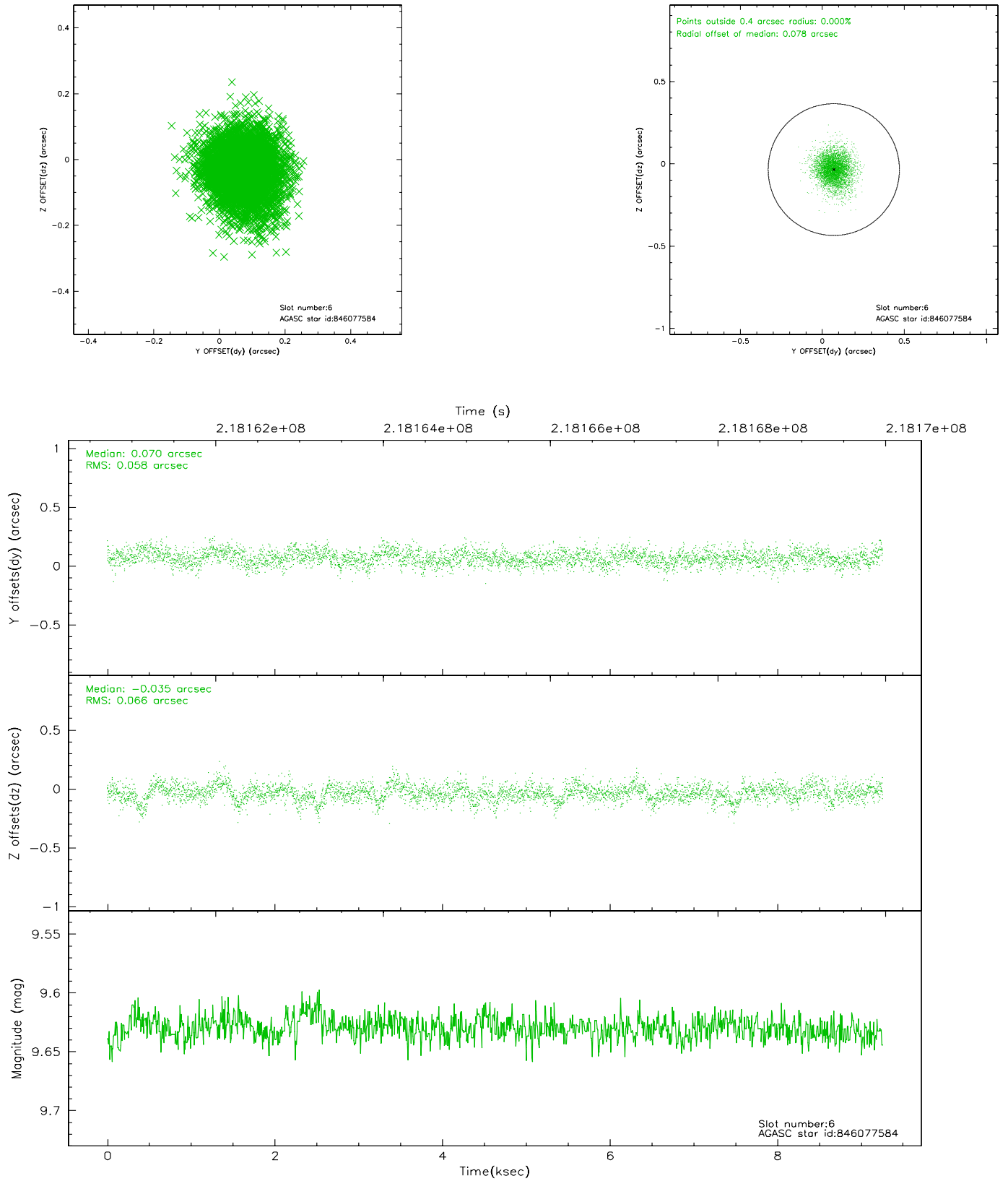
2.4.2 Slot 4



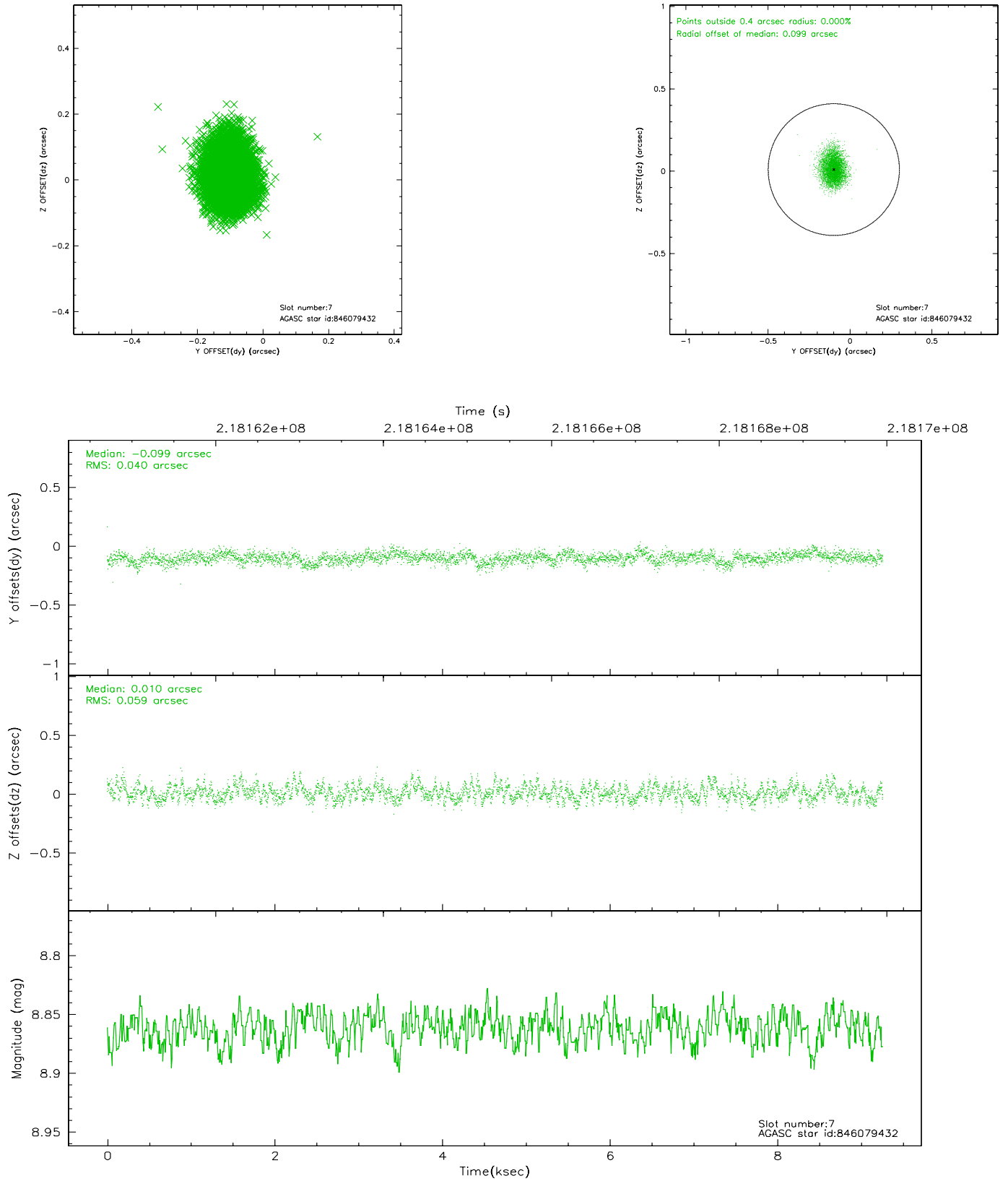
2.4.3 Slot 5



2.4.4 Slot 6

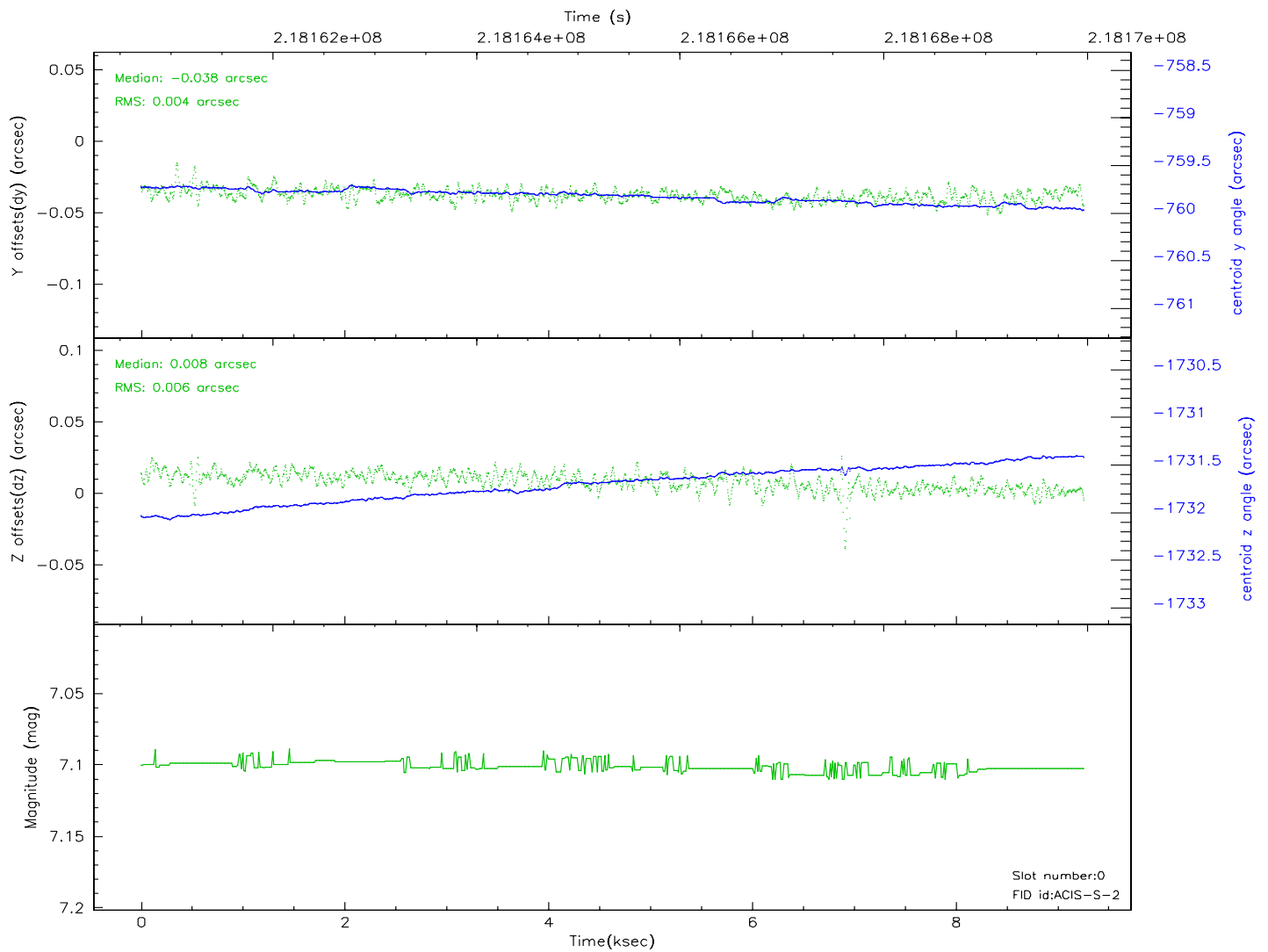
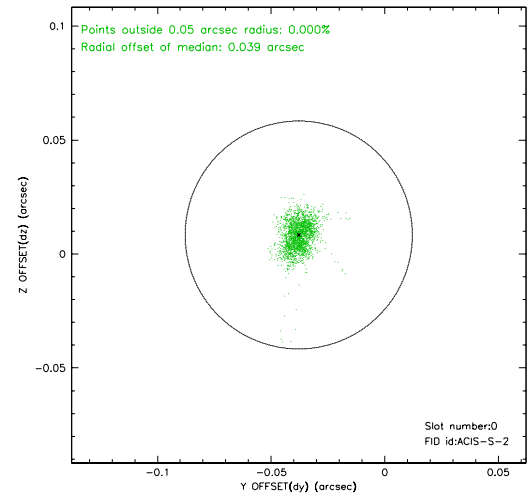
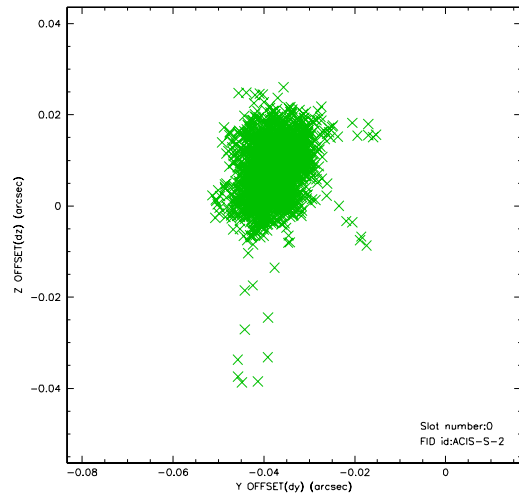


2.4.5 Slot 7

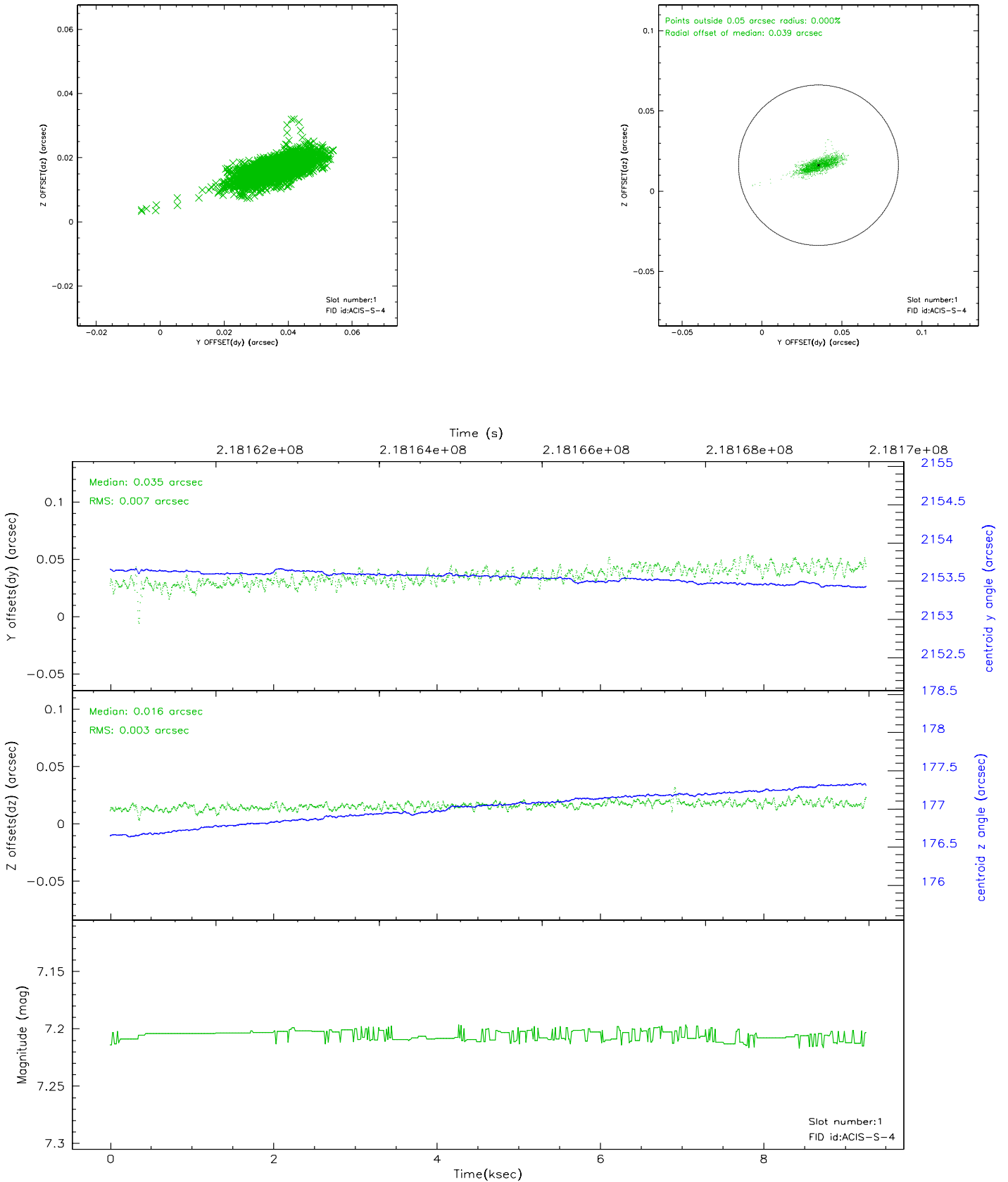


2.5 FID Slots

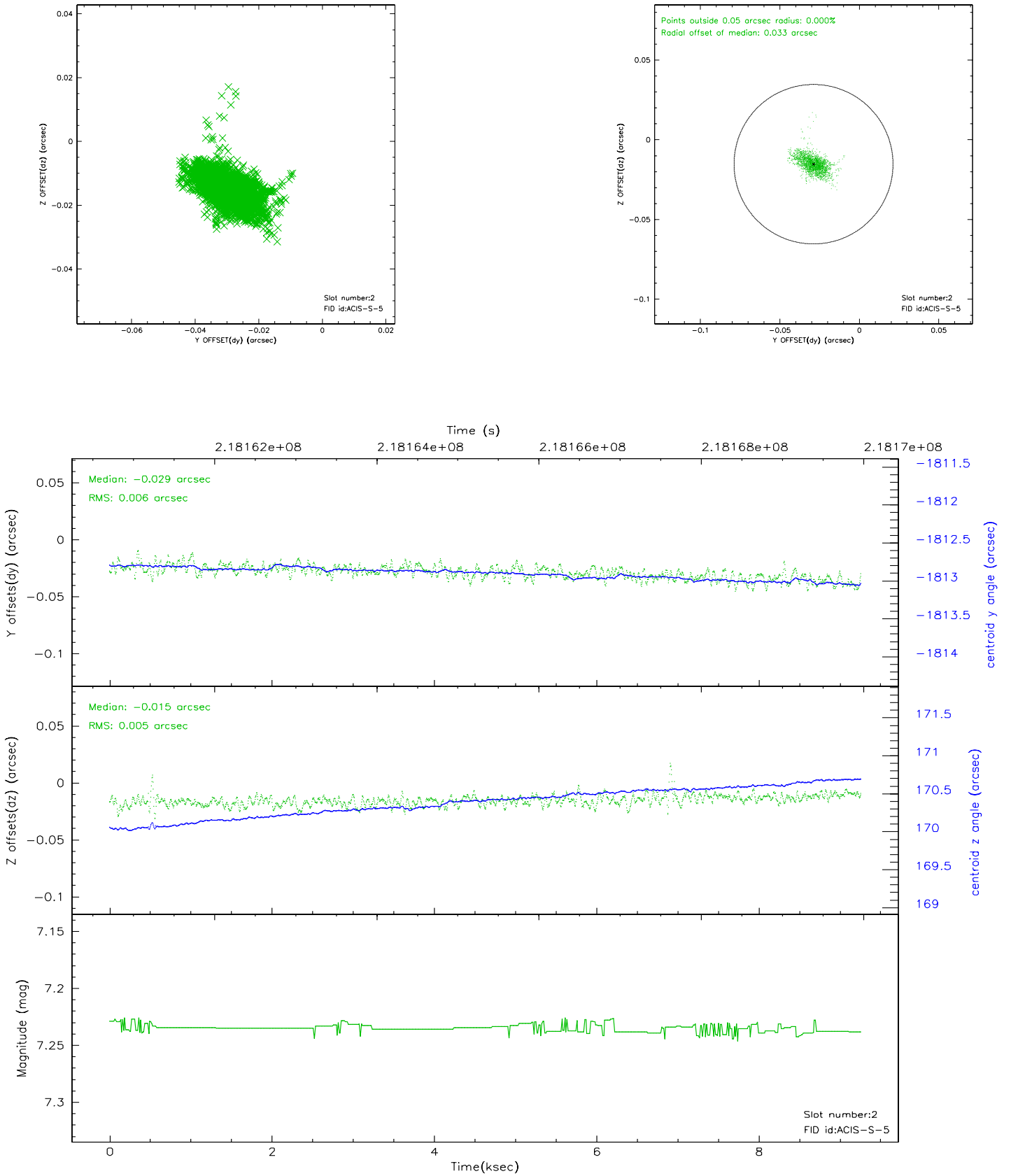
2.5.1 Slot 0



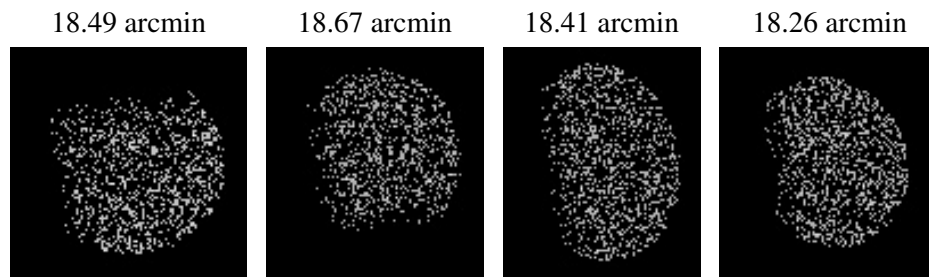
2.5.2 Slot 1



2.5.3 Slot 2



3 Point Sources



A Summary

A.1 Status

V&V Scientist	Jen Lauer
V&V Date (YYYY-MM-DD)	2006.04.11
V&V Edition	1
V&V Disposition and Status	OK
V&V Charge Time	8.953599

A.2 Comments