

V&V Reference Report

L2 ASCDS Version : 7.6.7

Observation 5824 - L2 Version 002
Chandra X-Ray Center

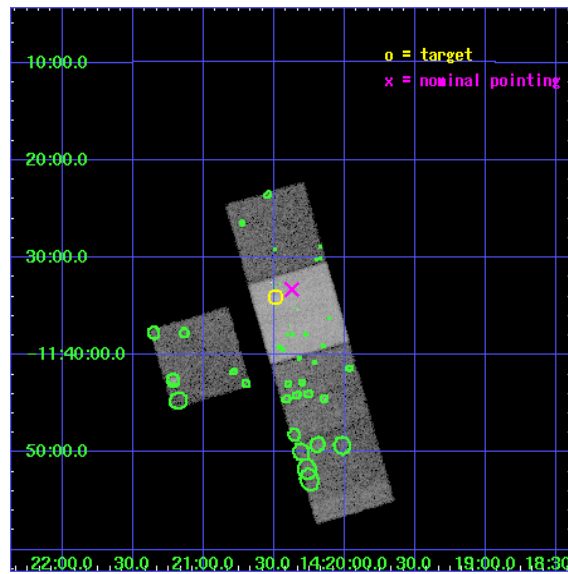
L2 Processing Date: Feb 27 2006

Contents

1	Front	2
2	OBI	3
2.1	OBI	3
2.1.1	Images	3
2.1.2	Bias	3
2.1.3	Parameters	4
2.1.4	Events	4
2.2	Compared Parameters	5
2.3	Aspect	6
2.4	Star Slots	9
2.4.1	Slot 3	9
2.4.2	Slot 4	10
2.4.3	Slot 5	11
2.4.4	Slot 6	12
2.4.5	Slot 7	13
2.5	FID Slots	14
2.5.1	Slot 0	14
2.5.2	Slot 1	15
2.5.3	Slot 2	16
3	Point Sources	17
A	Summary	18
A.1	Status	18
A.2	Comments	18

1 Front

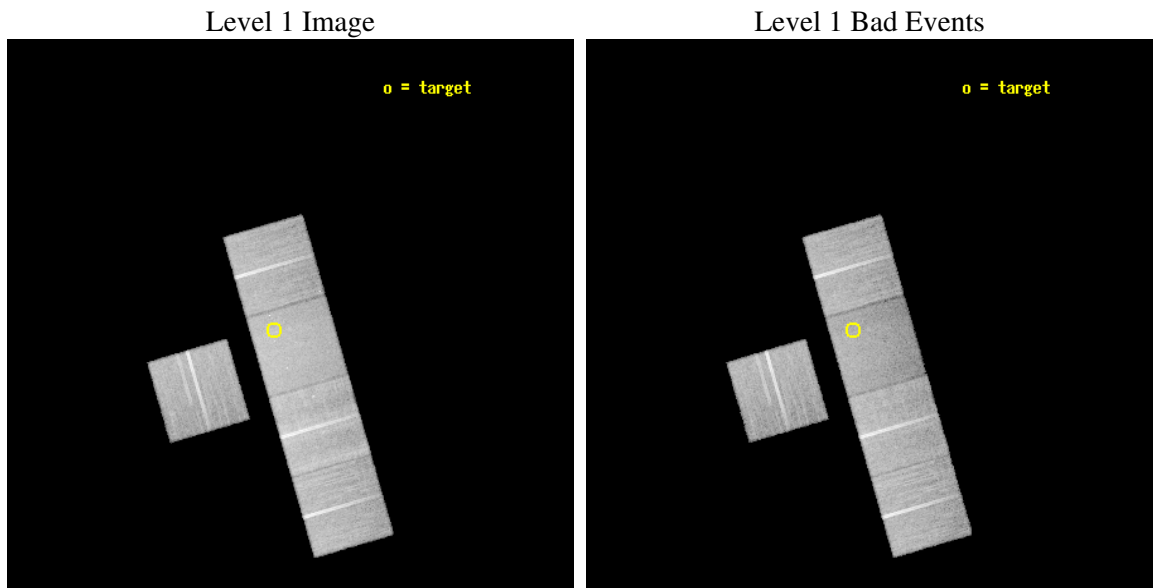
seq_num	800536
obs_id	5824
title	First X-ray Observation of Two High Redshift Lensing Clusters from the Optically Selected LCDCS Sample
observer	Prof. Gordon Garmire
object	LCDCS 954
dtcycle	0
cycle	P
ra_targ	215.12375
dec_targ	-11.567778
ra_nom	215.0938890741
dec_nom	-11.555048457432
roll_nom	73.818527159284
revision	2
ontime	29034.558953911
livetime	28655.201066247
ontime3	29037.699944168
ontime6	29034.558933973
ontime7	29034.558953911
ontime8	29034.558934033
ontime9	29031.417943746
l2events	153115



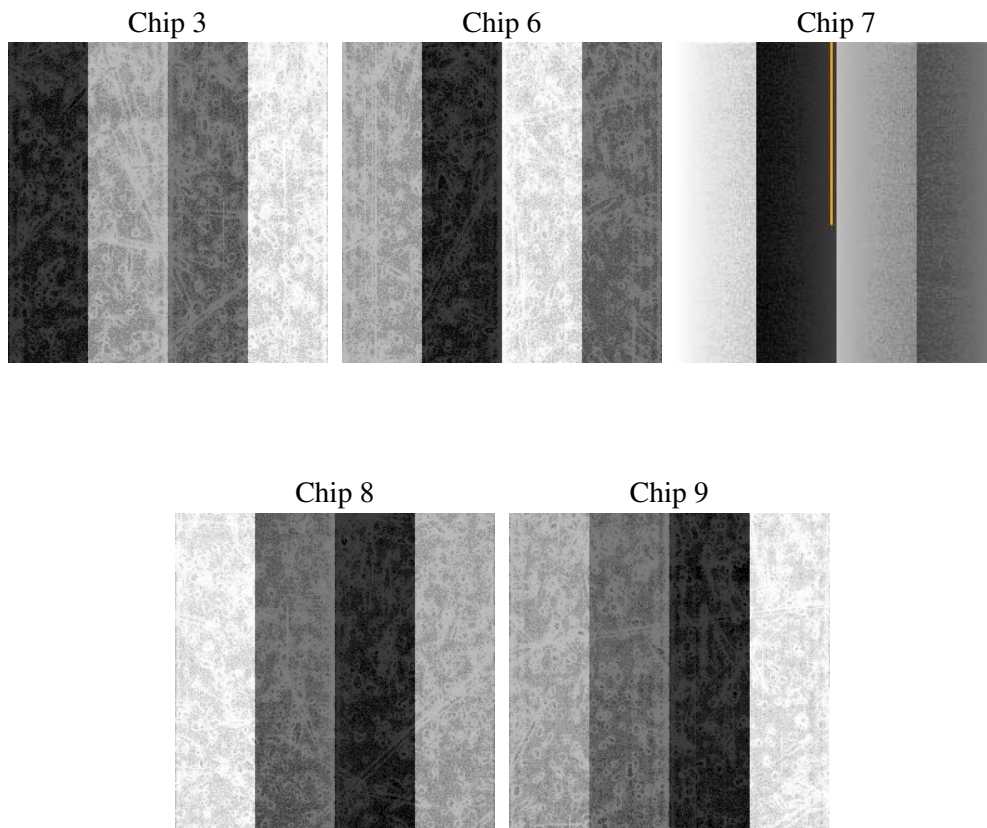
2 OBI

2.1 OBI

2.1.1 Images



2.1.2 Bias



2.1.3 Parameters

obi_num	0
ascdsver	7.6.7
caldbver	3.2.1
date	2006-02-27T12:52:09
revision	2

sched_exp_time	29000.000000
ontime	29038.668237388
ontime3	29041.809207737
ontime6	29038.66821745
ontime7	29038.668237388
ontime8	29038.668197602
ontime9	29038.668247312
l1events	979313

2.1.4 Events

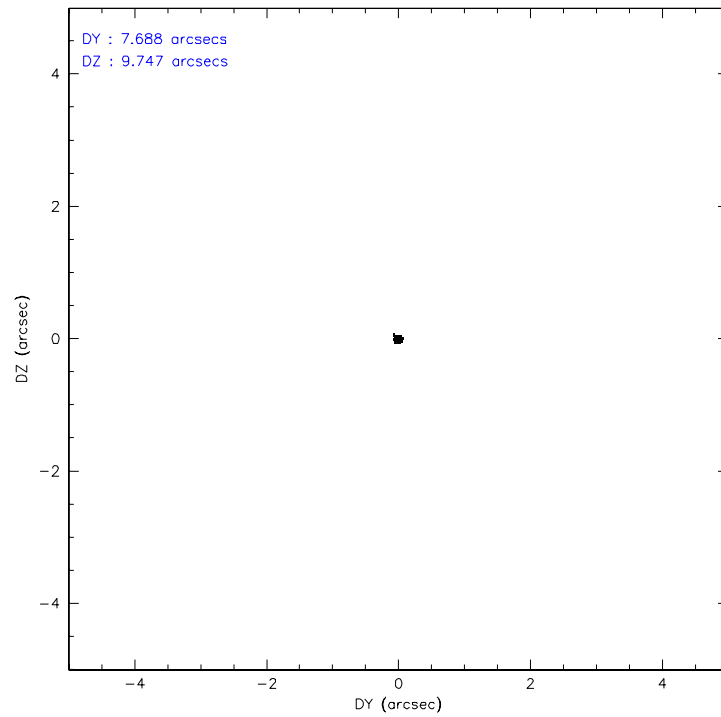
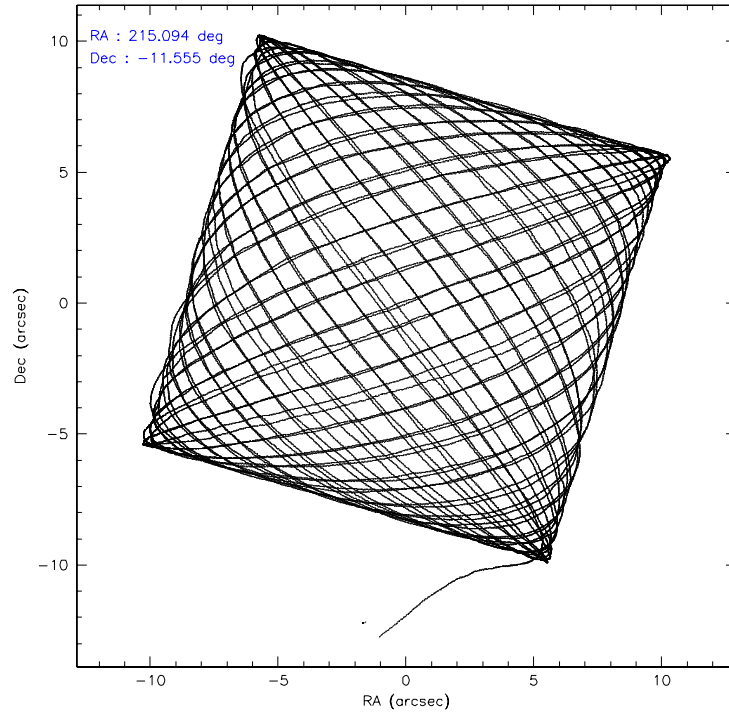
	ccd 3	ccd 6	ccd 7	ccd 8	ccd 9
level 1 events	177711	183355	203467	229174	185606
rejected events	160826	164661	117996	175122	165338
rejected %	90%	89%	57%	76%	89%

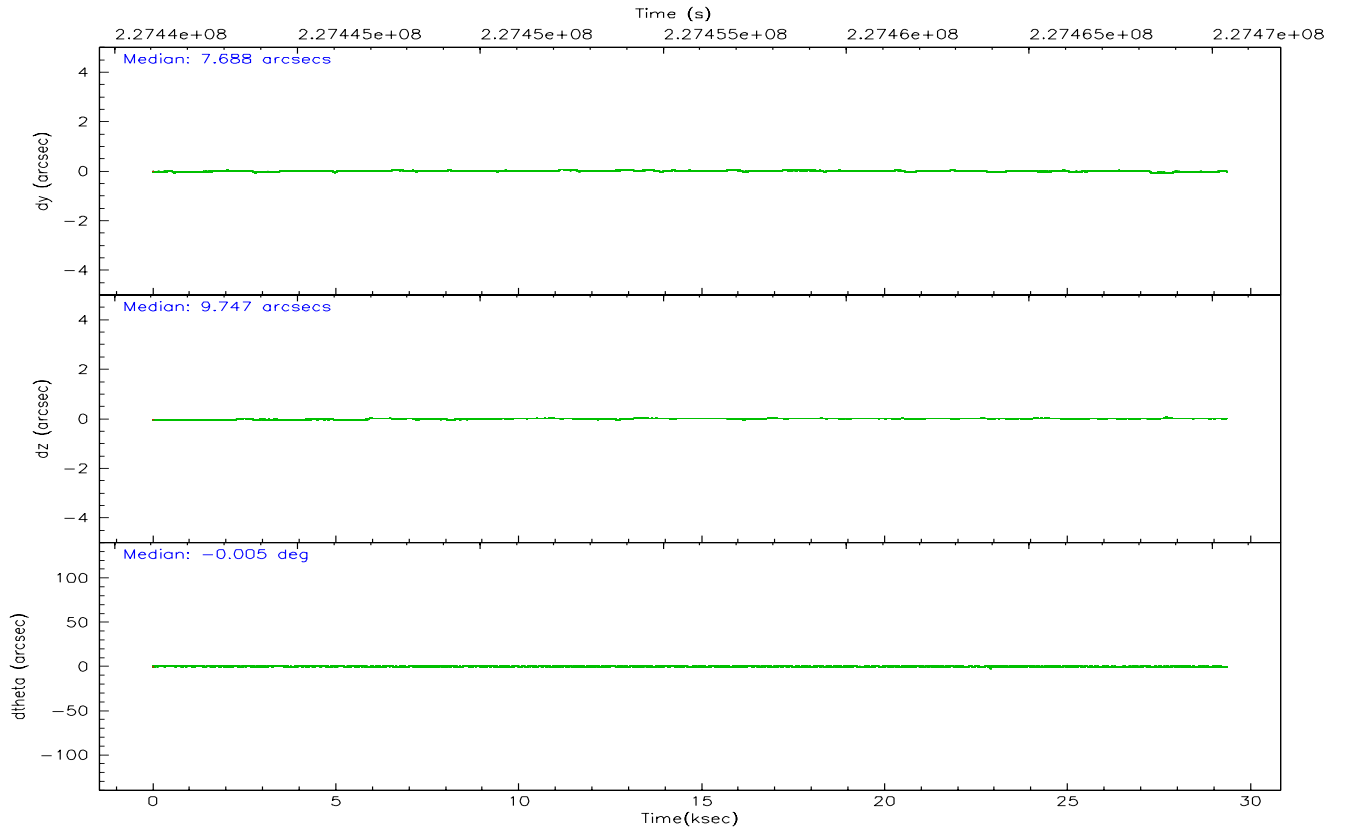
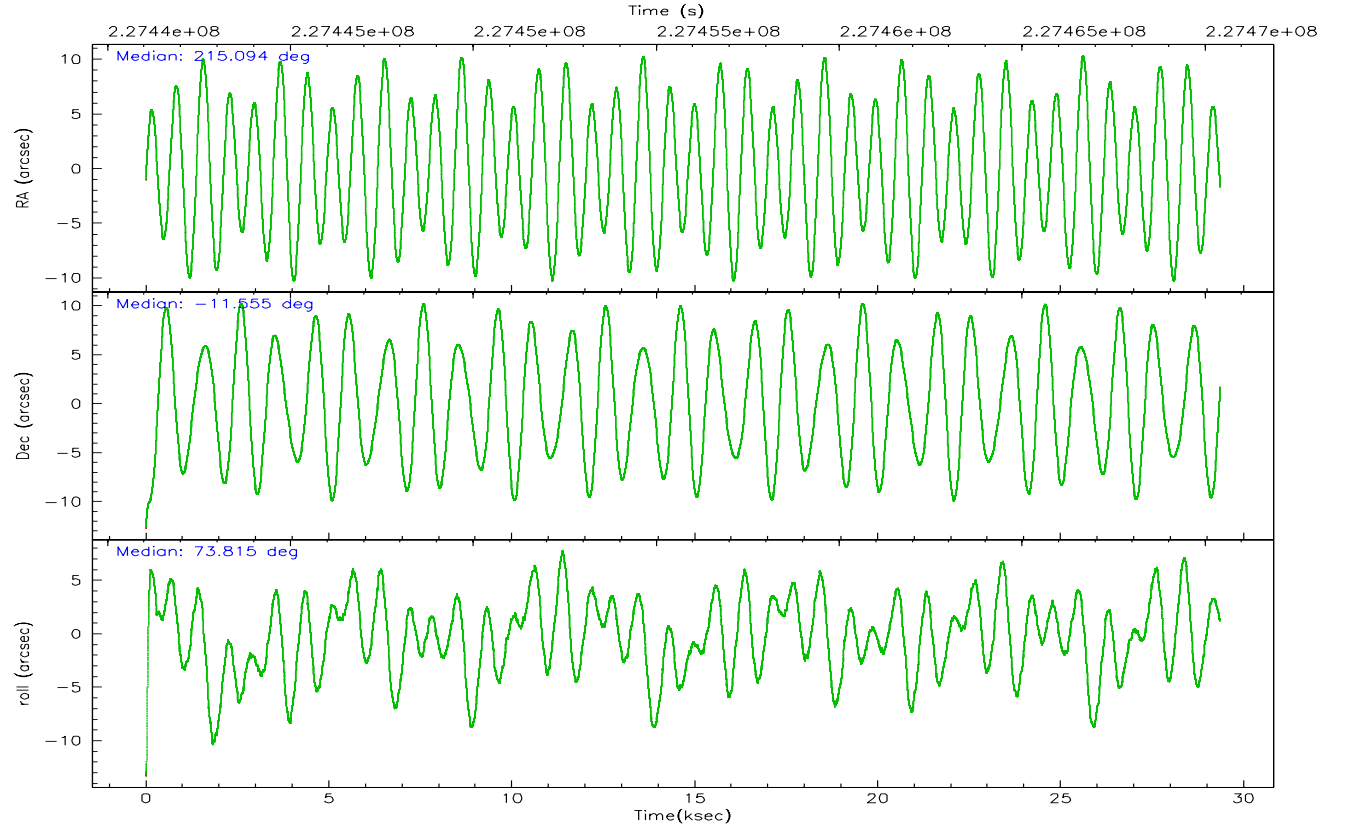
	ccd 3	ccd 6	ccd 7	ccd 8	ccd 9
grade 0 events	6013	6634	5419	17013	7543
	3%	3%	2%	7%	4%
grade 1 events	91	88	115	154	101
	0%	0%	0%	0%	0%
grade 2 events	3609	4044	21116	11845	4208
	2%	2%	10%	5%	2%
grade 3 events	1943	2092	5032	5918	2288
	1%	1%	2%	2%	1%
grade 4 events	1927	1944	4917	5482	2179
	1%	1%	2%	2%	1%
grade 5 events	7195	7274	15572	10503	7942
	4%	3%	7%	4%	4%
grade 6 events	3404	3980	49003	13829	4056
	1%	2%	24%	6%	2%
grade 7 events	153529	157299	102293	164430	157289
	86%	85%	50%	71%	84%

2.2 Compared Parameters

Parameter	Planned	Actual	Parameter	Planned	Actual
Instrument	ACIS	ACIS	Obspar format version number	6	6
Detector	ACIS-36789	ACIS-36789	Obspar file type	PREDICTED	ACTUAL
Grating	NONE	NONE	Obspar update status	NONE	UPDATED
Data mode	VFAINT	VFAINT	On-chip summing requested	N	N
Observation mode	POINTING	POINTING	Subarray requested	NONE	NONE
Pointing RA	215.100897	215.0938890741012	Alternating exposures requested	N	N
Pointing Dec	-11.581360	-11.55504845743221	Primary exposure time	0.000000	3.1
Pointing Roll	73.663315	73.81852715928355			
SIM focus pos (mm)	-0.684267	-0.6828225247311905			
SIM defocus (mm)	0	0.001444936568705701			
SIM translation stage pos (mm)	-190.132523	-190.1425803651734			
SIM translation stage offset (mm)	0	0.01005778216563158			
Observation start time	227441423.184000	227440408.66908			
Observation start date	2005-03-17T10:09:19	2005-03-17T09:53:28			
Observation end time	227470423.184000	227470814.27045			
Observation end date	2005-03-17T18:12:39	2005-03-17T18:20:14			
Read mode	TIMED	TIMED			

2.3 Aspect



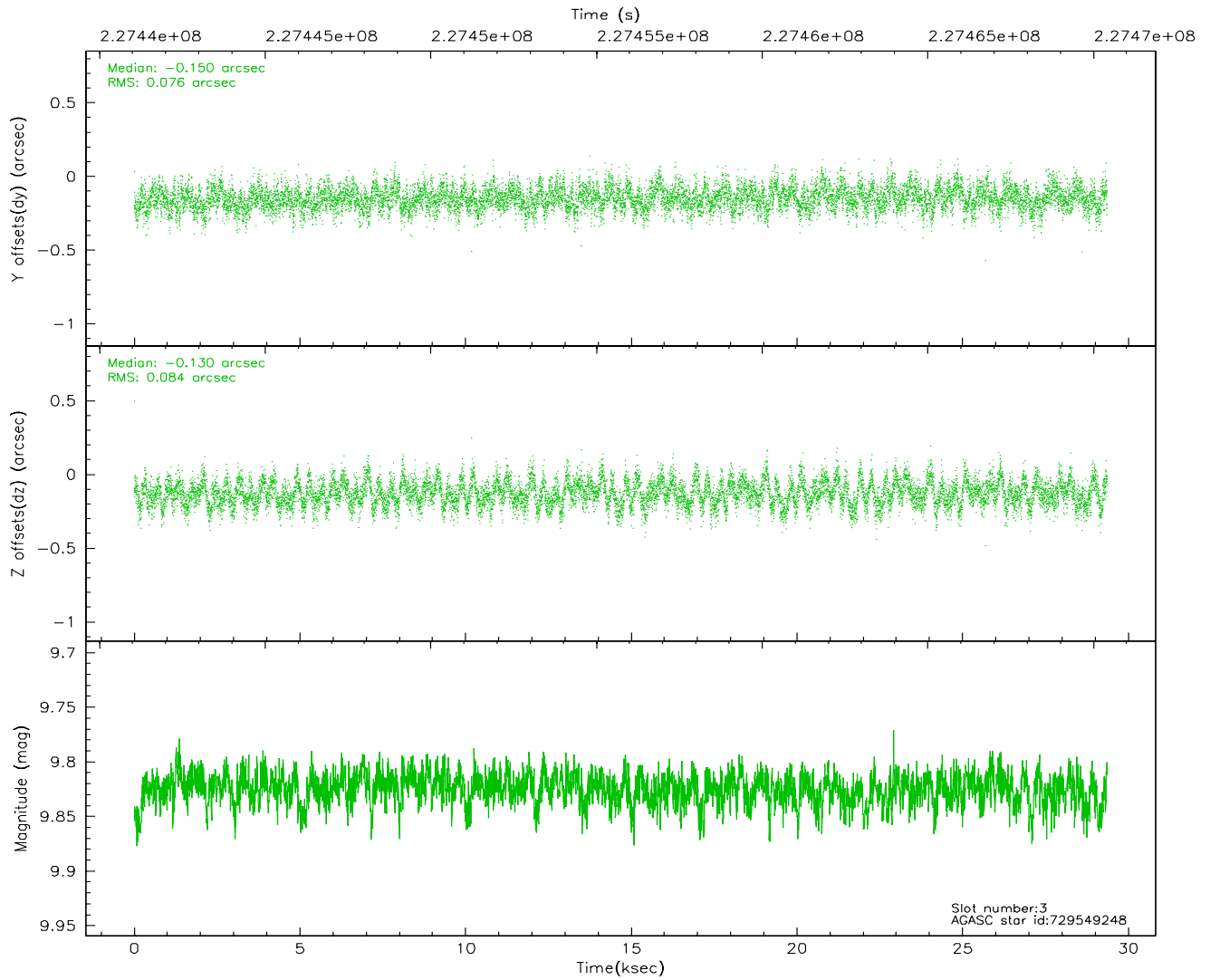
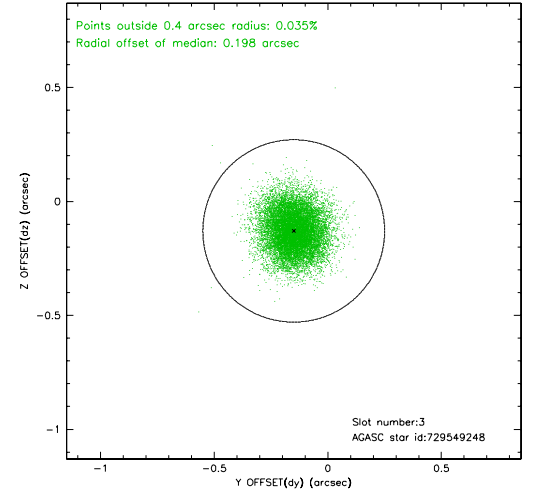
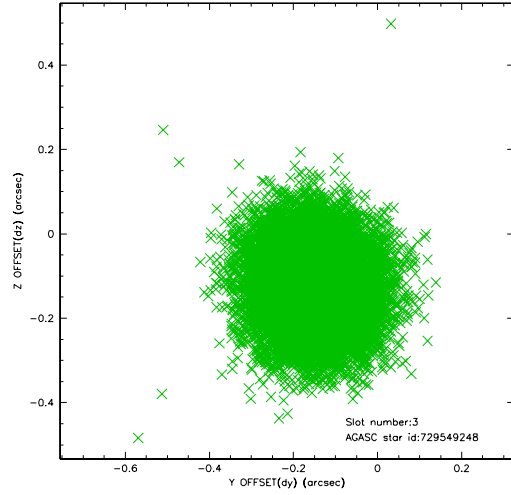


Slot Statistics

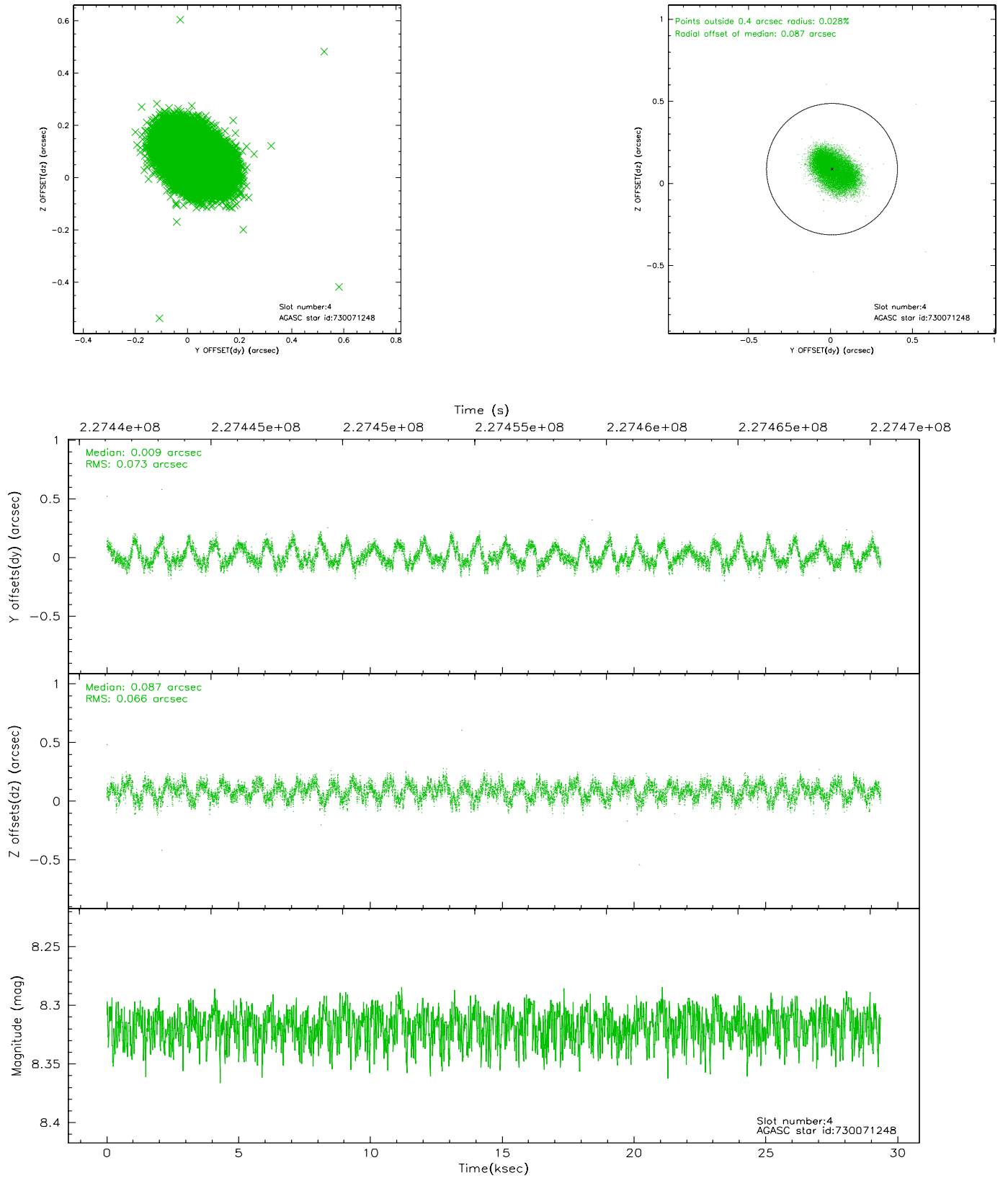
slot	status	id	mag	n_pts	med_dy	med_dz	dr1	dr2	ra	dec	mean_y	mean_z
0	FID	ACIS-S-2	7.11	7160	-0.028	-0.003	0.006	0.011	0.000000	0.000000	-760.45	-1730.95
1	FID	ACIS-S-4	7.21	7160	0.055	0.014	0.005	0.009	0.000000	0.000000	2152.83	177.53
2	FID	ACIS-S-5	7.24	7158	-0.058	-0.002	0.006	0.010	0.000000	0.000000	-1813.26	171.19
3	GUIDE	729549248	9.82	14303	-0.150	-0.130	0.122	0.195	215.033935	-11.058423	1739.85	757.32
4	GUIDE	730071248	8.32	14320	0.009	0.087	0.107	0.162	215.554332	-11.808230	-335.01	-1763.30
5	GUIDE	730071272	9.33	14309	0.026	-0.150	0.131	0.203	214.693677	-11.804287	-1174.82	1150.51
6	GUIDE	730071552	8.14	14319	-0.045	0.051	0.072	0.116	215.297067	-11.841775	-705.16	-926.70
7	GUIDE	730071624	9.69	14306	0.154	0.147	0.104	0.176	215.217660	-11.714250	-342.84	-529.25

2.4 Star Slots

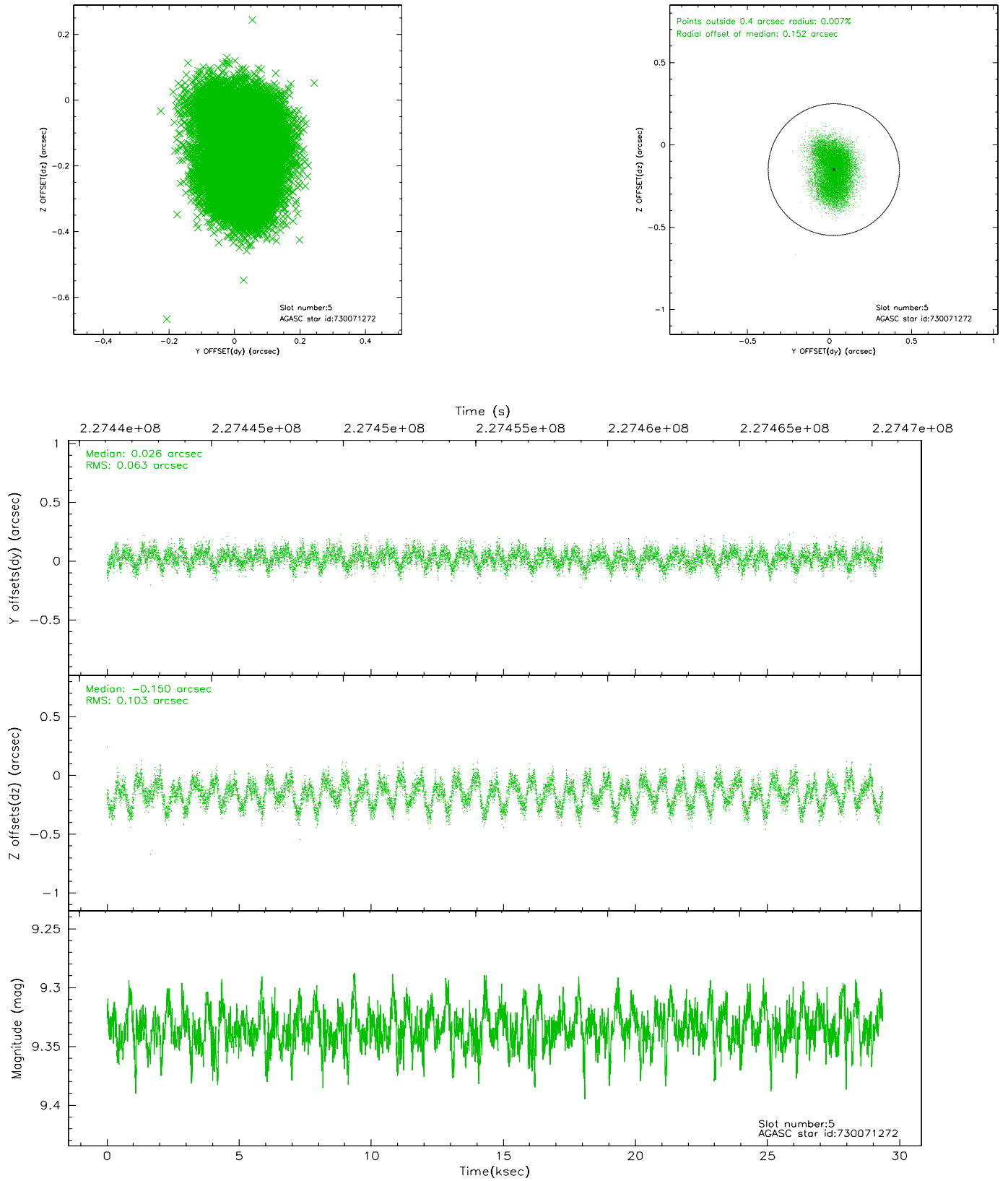
2.4.1 Slot 3



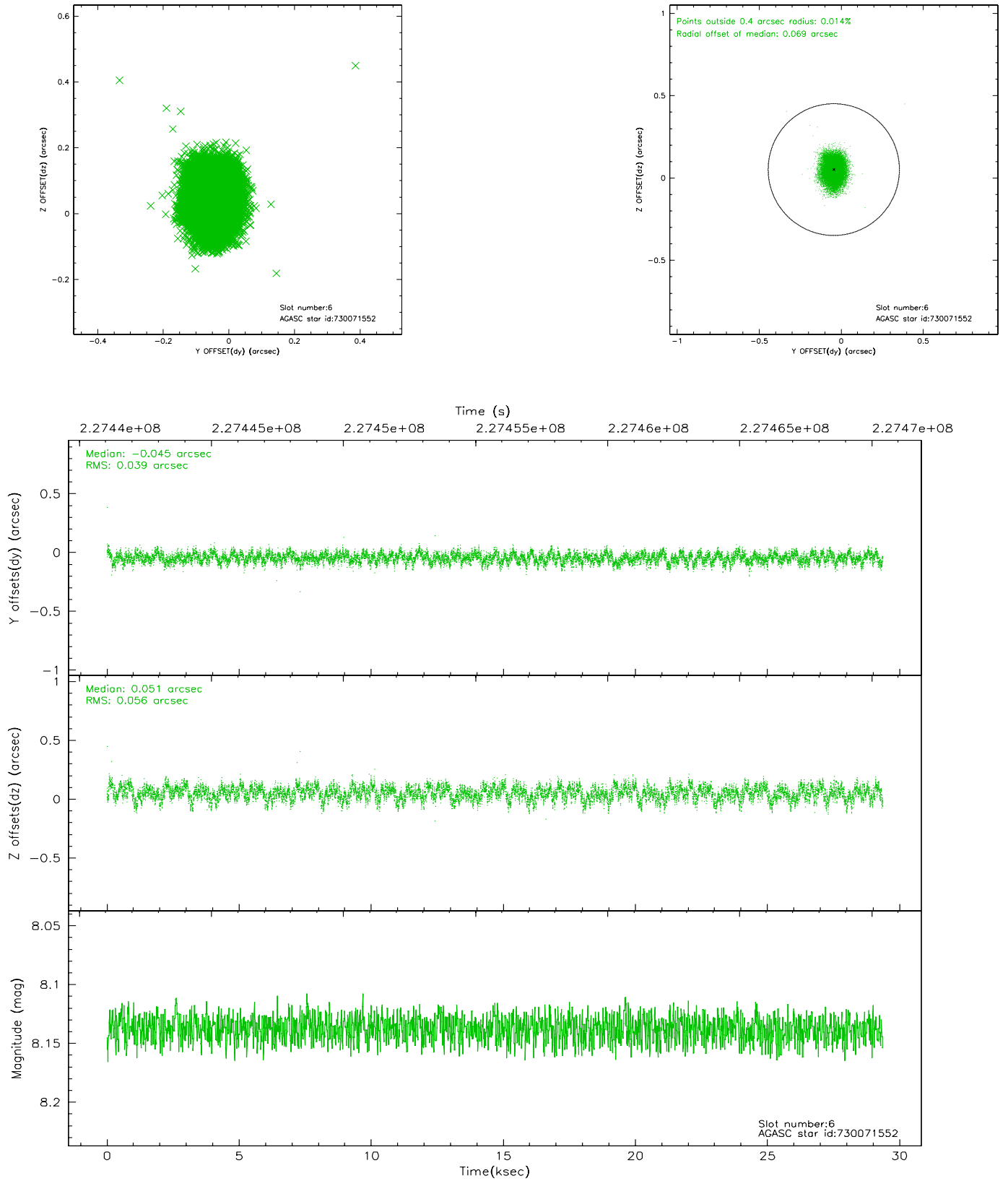
2.4.2 Slot 4



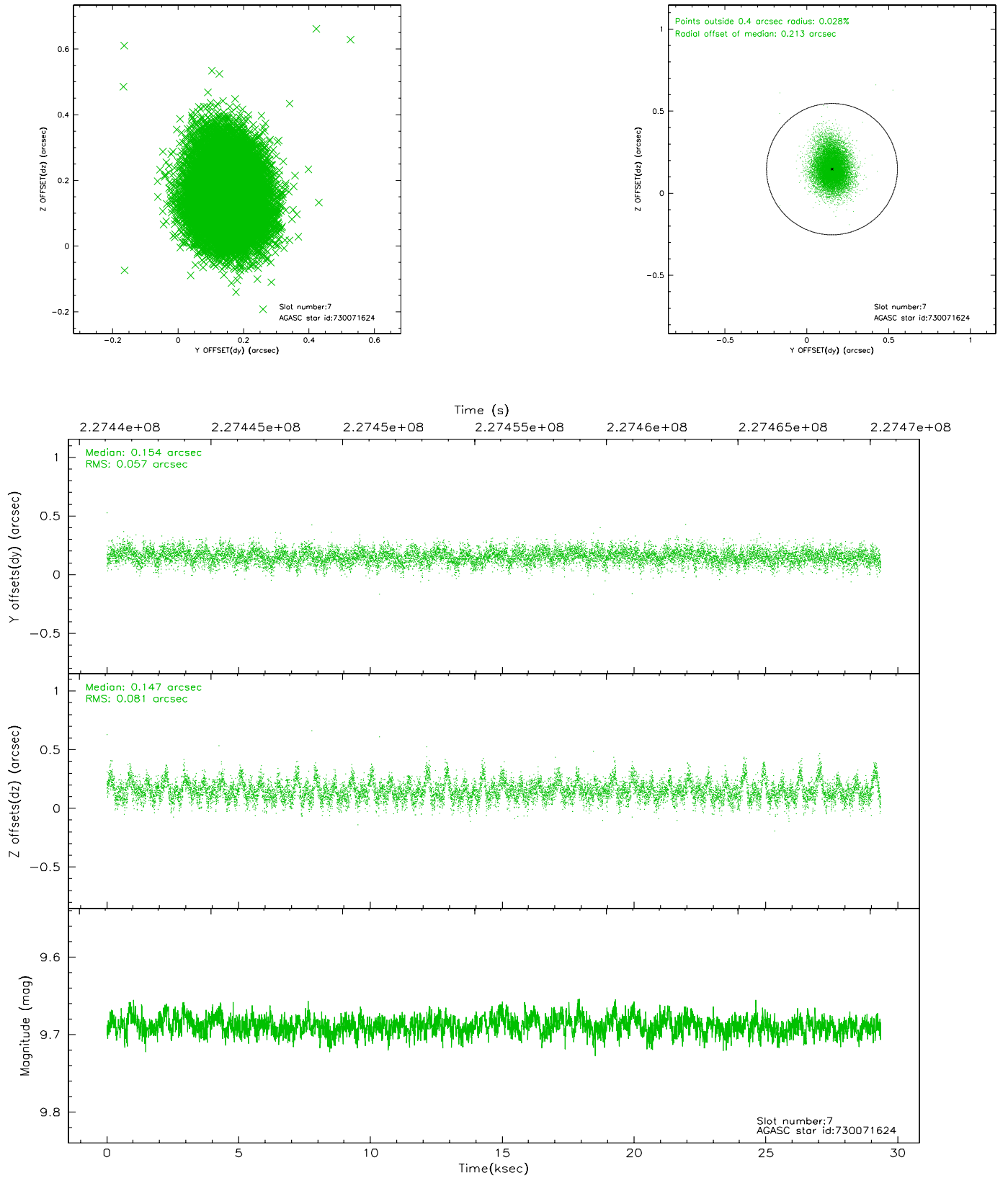
2.4.3 Slot 5



2.4.4 Slot 6

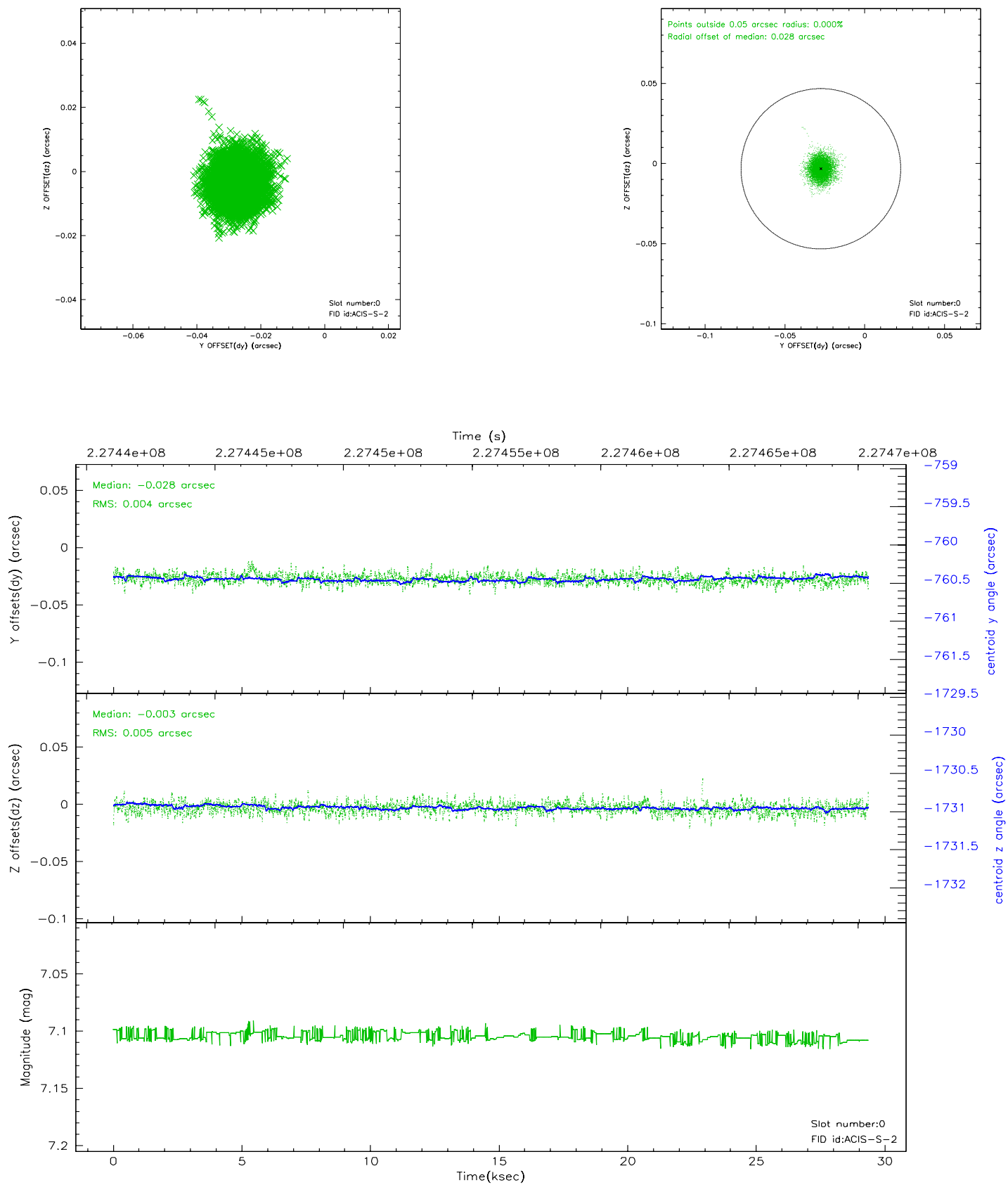


2.4.5 Slot 7

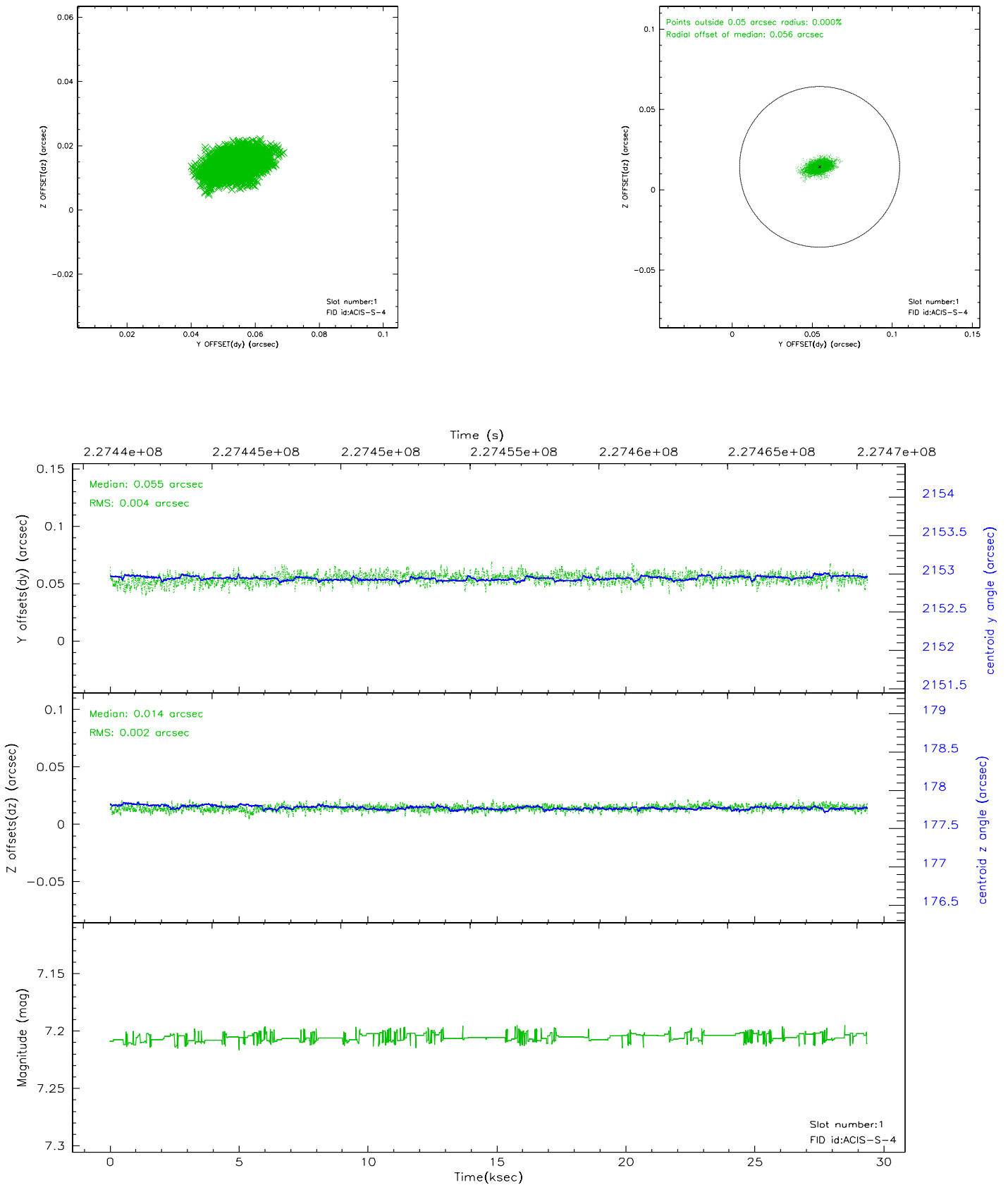


2.5 FID Slots

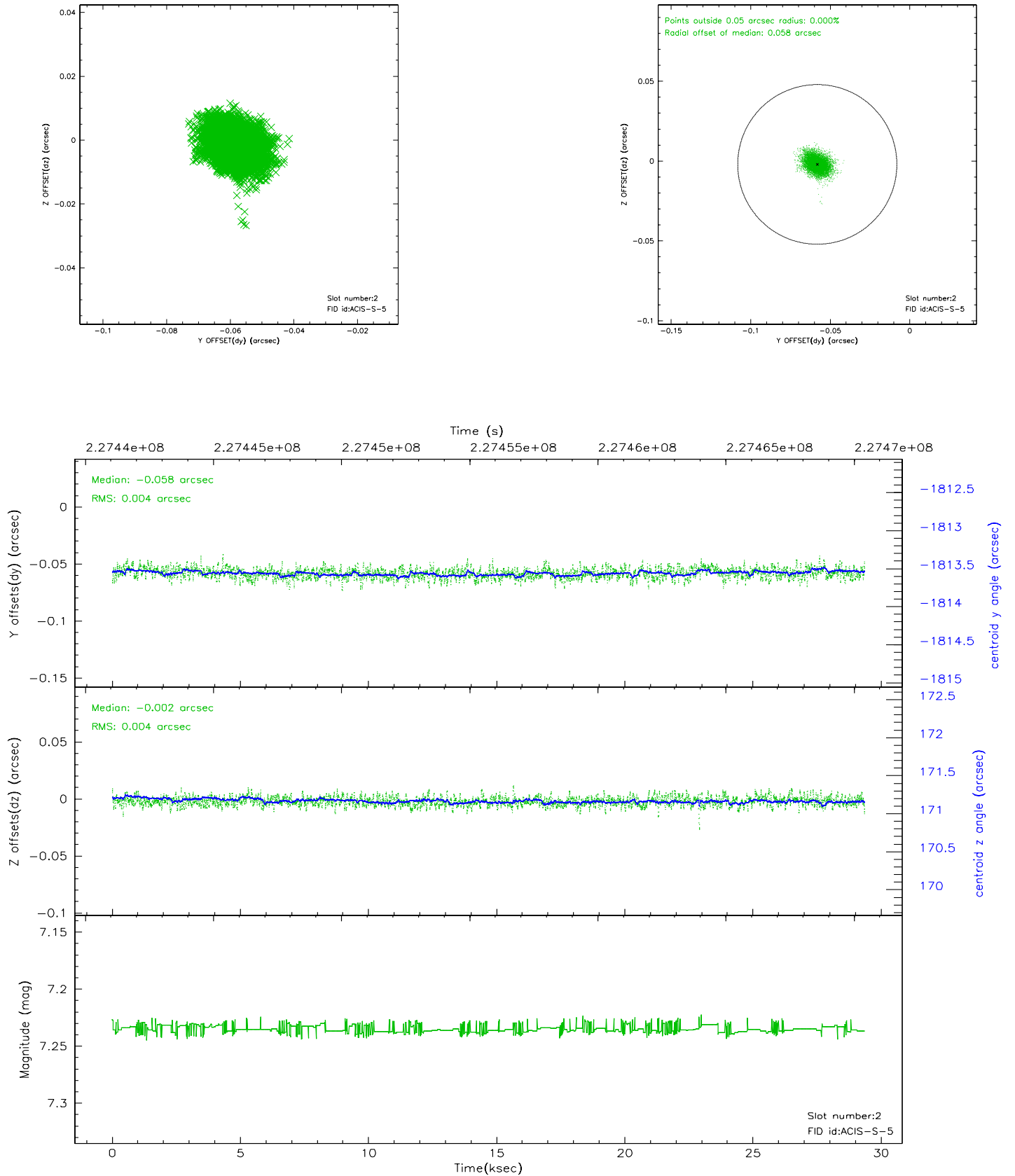
2.5.1 Slot 0



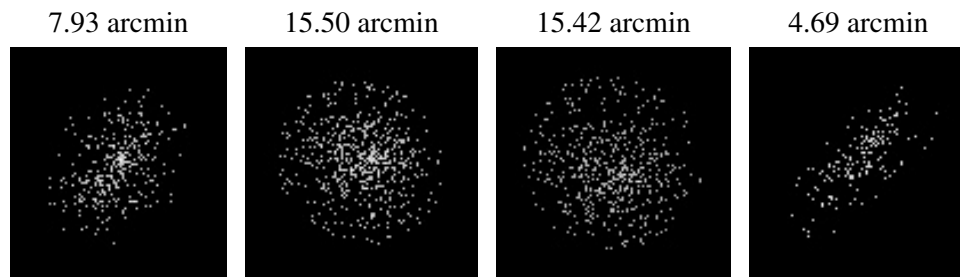
2.5.2 Slot 1



2.5.3 Slot 2



3 Point Sources



A Summary

A.1 Status

V&V Scientist	Jen Lauer
V&V Date (YYYY-MM-DD)	2006.02.27
V&V Edition	1
V&V Disposition and Status	OK
V&V Charge Time	29.03455

A.2 Comments