

# V&V Reference Report

## L2 ASCDS Version : 7.6.7.1

Observation 5794 - L2 Version 002  
Chandra X-Ray Center

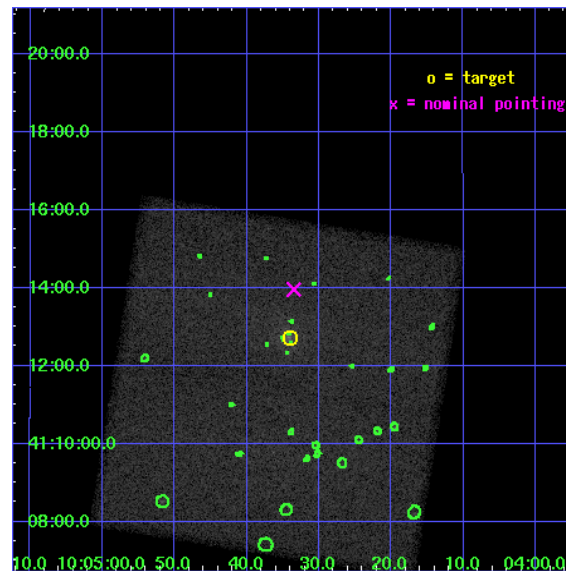
L2 Processing Date : Mar 16 2006

## Contents

<b>1</b>	<b>Front</b>	<b>2</b>
<b>2</b>	<b>OBI</b>	<b>3</b>
2.1	OBI . . . . .	3
2.1.1	Images . . . . .	3
2.1.2	Bias . . . . .	3
2.1.3	Parameters . . . . .	4
2.1.4	Events . . . . .	4
2.2	Compared Parameters . . . . .	5
2.3	Aspect . . . . .	6
2.4	Star Slots . . . . .	9
2.4.1	Slot 3 . . . . .	9
2.4.2	Slot 4 . . . . .	10
2.4.3	Slot 5 . . . . .	11
2.4.4	Slot 6 . . . . .	12
2.4.5	Slot 7 . . . . .	13
2.5	FID Slots . . . . .	14
2.5.1	Slot 0 . . . . .	14
2.5.2	Slot 1 . . . . .	15
2.5.3	Slot 2 . . . . .	16
<b>3</b>	<b>Point Sources</b>	<b>17</b>
<b>A</b>	<b>Summary</b>	<b>18</b>
A.1	Status . . . . .	18
A.2	Comments . . . . .	18

# 1 Front

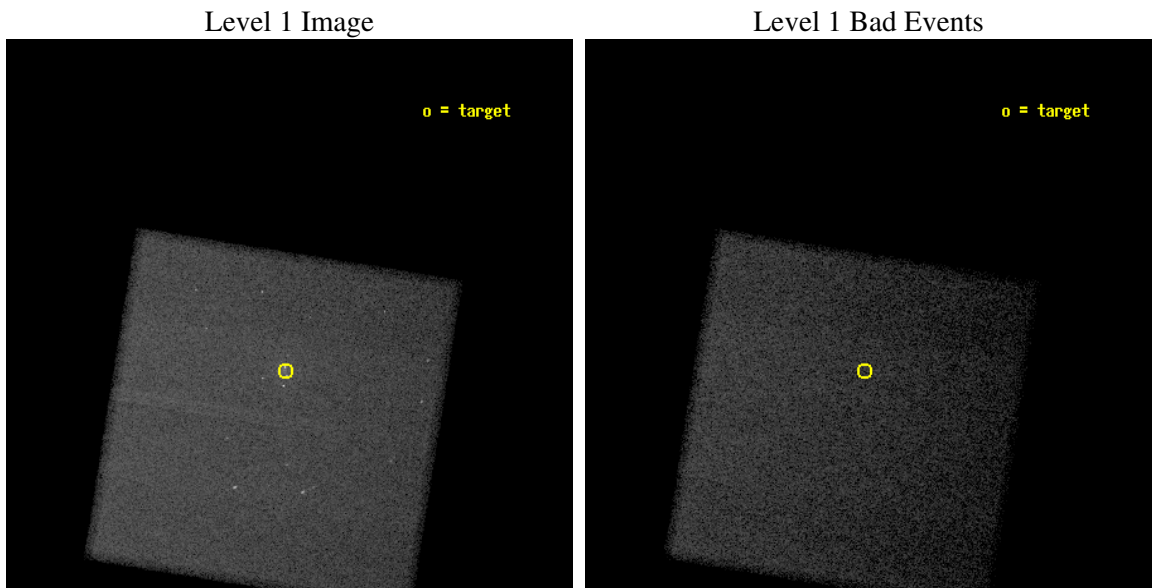
seq_num	800507
obs_id	5794
title	Chandra study of the first strong-lens selected cluster of galaxies and the lens system
observer	Mr. Naohisa Inada
object	SDSS J1004+4112
dtcycle	0
cycle	P
ra_targ	151.141667
dec_targ	41.211944
ra_nom	151.13959212097
dec_nom	41.23262921001
roll_nom	99.063684822223
revision	2
ontime	81183.0
livetime	80087.404309052
ontime7	81183.0
l2events	241731



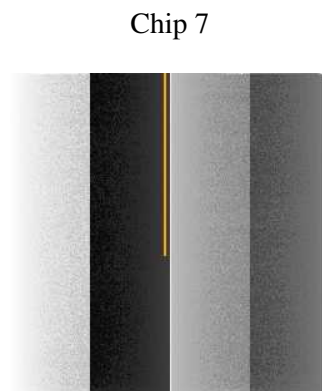
## 2 OBI

### 2.1 OBI

#### 2.1.1 Images



#### 2.1.2 Bias



### 2.1.3 Parameters

obi_num	0
ascdsver	7.6.7.1
caldbver	3.2.1
date	2006-03-16T10:44:23
revision	2

sched_exp_time	81000.000000
ontime	82089.076299727
ontime7	82089.076299727
l1events	569633

### 2.1.4 Events

	<b>ccd 7</b>
level 1 events	569633
rejected events	321014
rejected %	56%

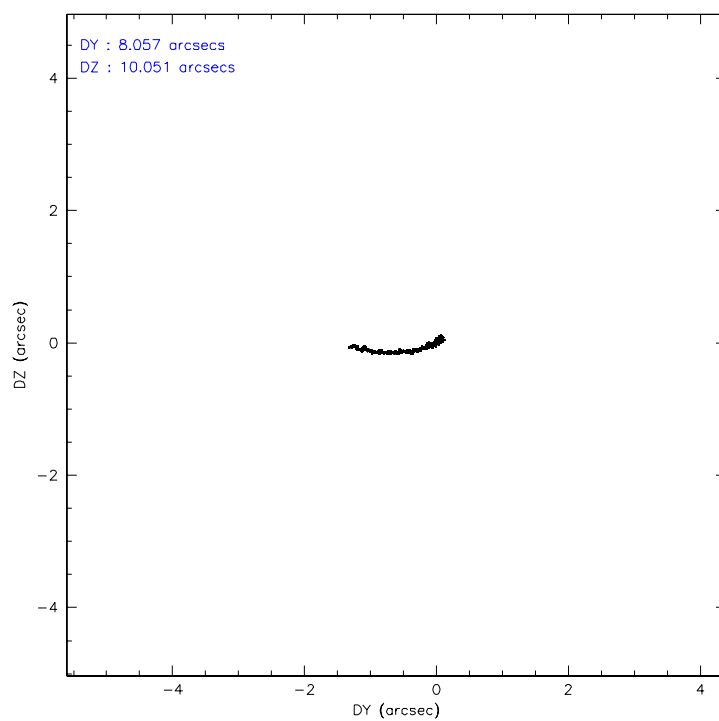
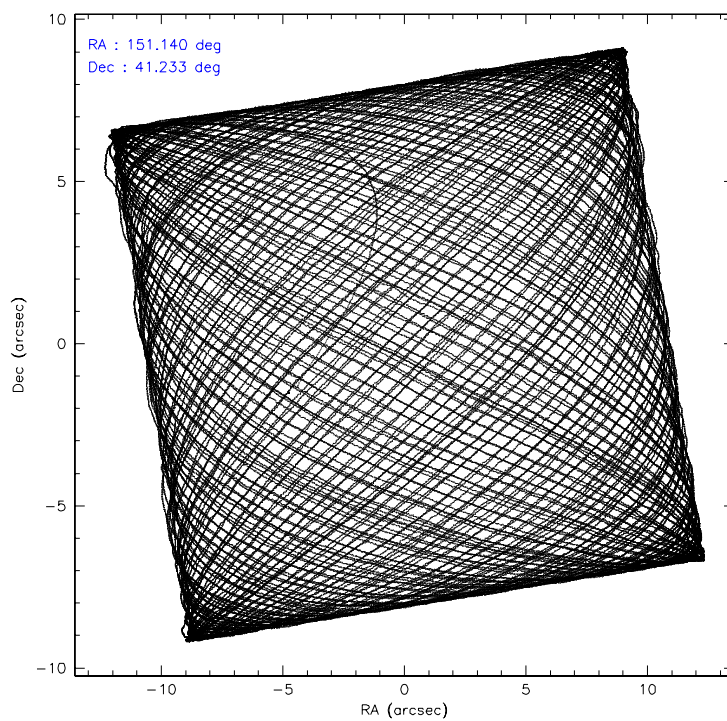
	<b>ccd 7</b>
grade 0 events	18509
	3%
grade 1 events	339
	0%
grade 2 events	61688
	10%
grade 3 events	15286
	2%
grade 4 events	14907
	2%
grade 5 events	42461
	7%
grade 6 events	140992
	24%
grade 7 events	275451
	48%

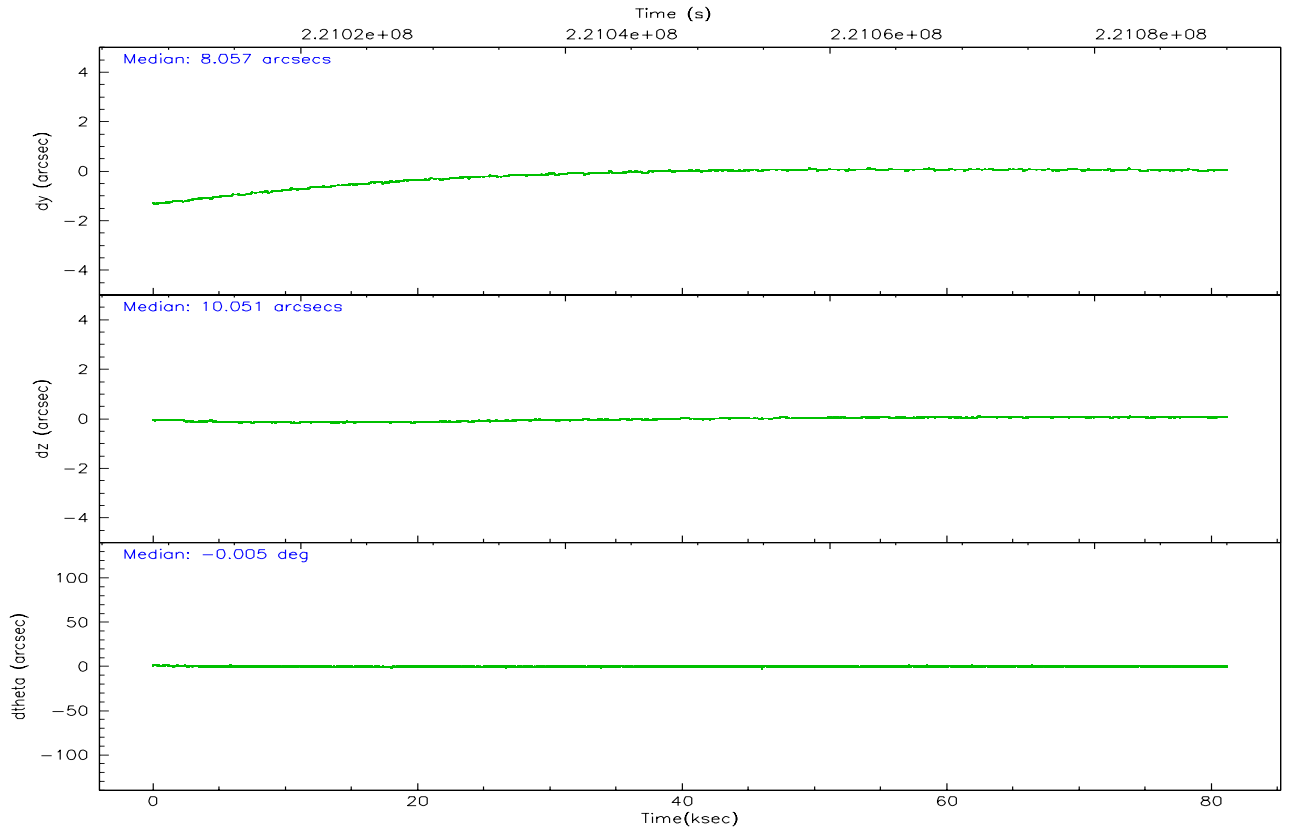
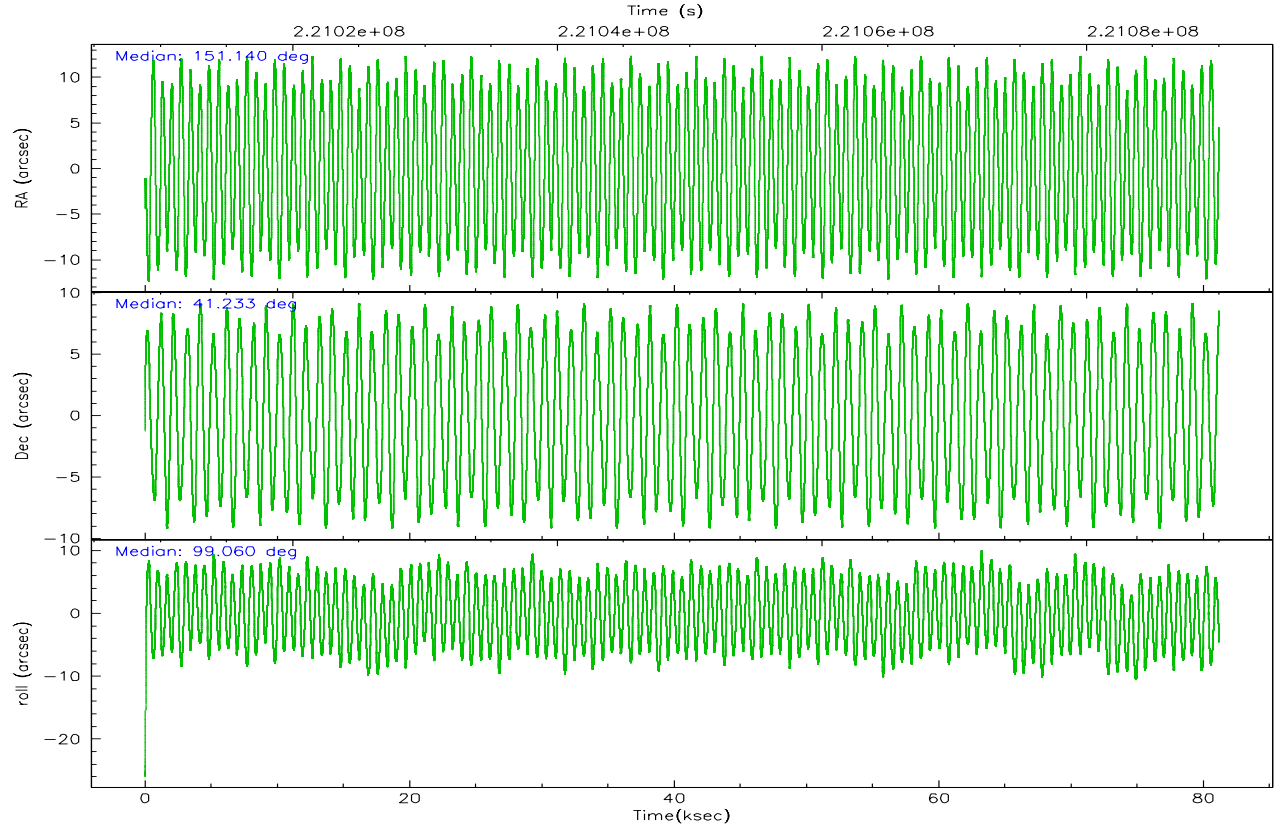


## 2.2 Compared Parameters

Parameter	Planned	Actual	Parameter	Planned	Actual
Instrument	ACIS	ACIS	Obspar format version number	6	6
Detector	ACIS-7	ACIS-7	Obspar file type	PREDICTED	ACTUAL
Grating	NONE	NONE	Obspar update status	NONE	UPDATED
Data mode	VFAINT	VFAINT	On-chip summing requested	N	N
Observation mode	POINTING	POINTING	Subarray requested	NONE	NONE
Pointing RA	151.162797	151.139592120968	Alternating exposures requested	N	N
Pointing Dec	41.211734	41.23262921000973	Primary exposure time	0.000000	3
Pointing Roll	98.891770	99.06368482222251			
SIM focus pos (mm)	-0.684267	-0.6828225247311905			
SIM defocus (mm)	0	0.001444936568705701			
SIM translation stage pos (mm)	-190.132523	-190.1400660498719			
SIM translation stage offset (mm)	0	0.00754346686406393			
Observation start time	221009040.184000	221007858.41575			
Observation start date	2005-01-01T23:22:56	2005-01-01T23:04:18			
Observation end time	221090040.184000	221090410.89447			
Observation end date	2005-01-02T21:52:56	2005-01-02T22:00:10			
Read mode	TIMED	TIMED			

## 2.3 Aspect



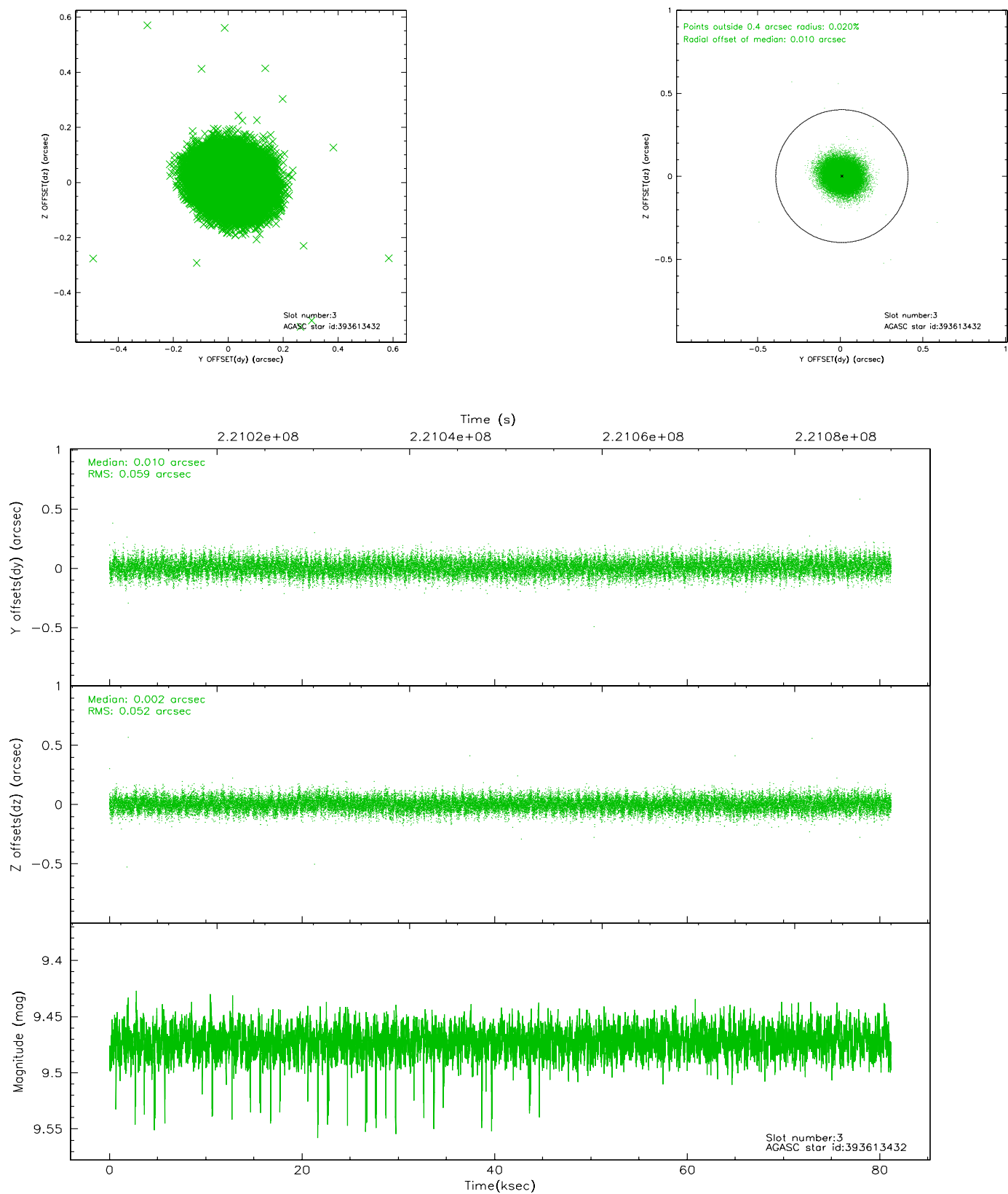


### Slot Statistics

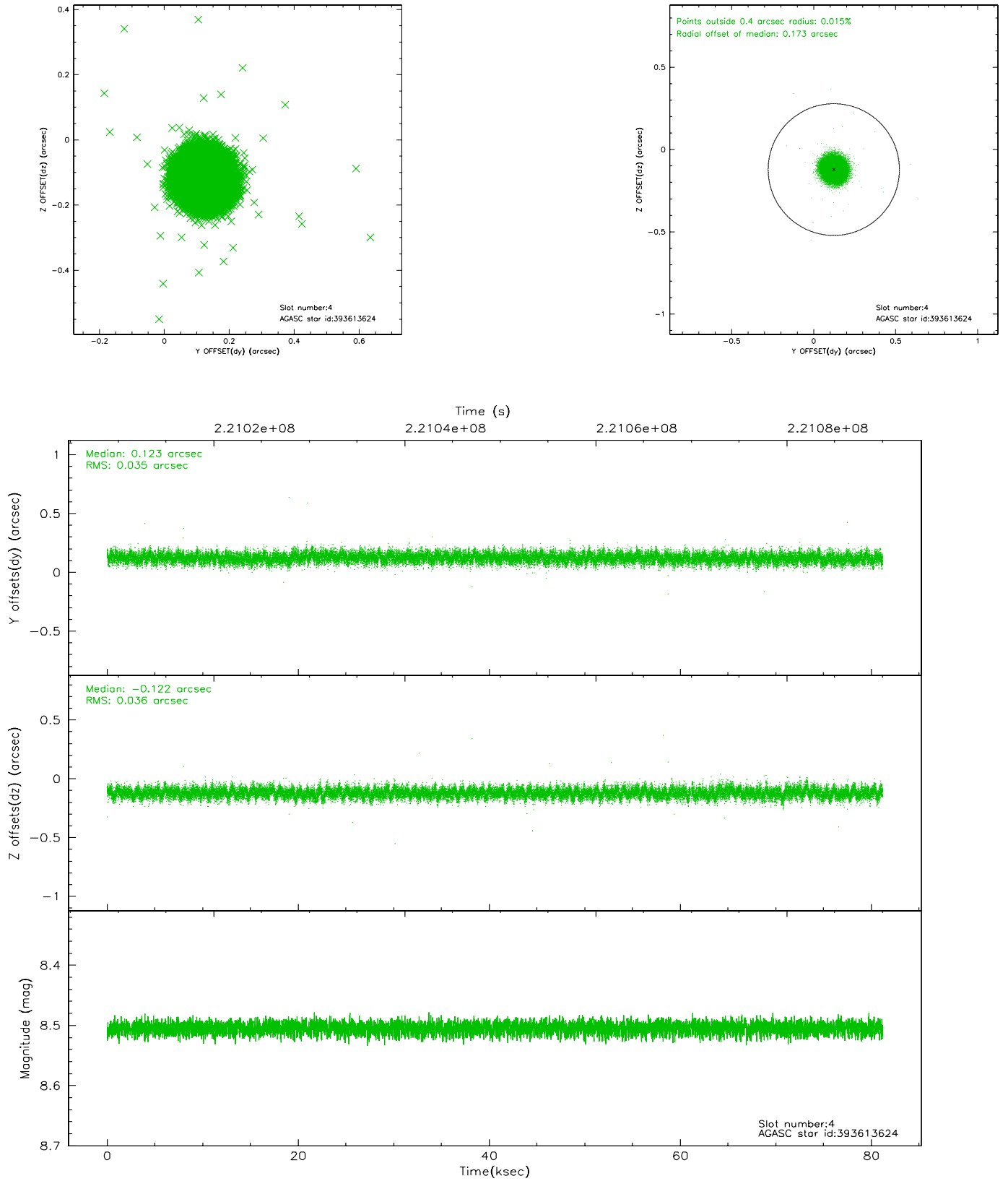
slot	status	id	mag	n_pts	med_dy	med_dz	dr1	dr2	ra	dec	mean_y	mean_z
0	FID	ACIS-S-2	7.11	19801	-0.043	-0.018	0.006	0.013	0.000000	0.000000	-760.64	-1731.31
1	FID	ACIS-S-4	7.21	19799	0.042	0.024	0.007	0.012	0.000000	0.000000	2152.72	177.34
2	FID	ACIS-S-6	7.35	19799	-0.027	0.001	0.007	0.012	0.000000	0.000000	401.22	814.60
3	GUIDE	393613432	9.47	39522	0.010	0.002	0.084	0.137	151.251387	41.697805	1692.13	-505.37
4	GUIDE	393613624	8.50	39525	0.123	-0.122	0.053	0.086	151.136661	40.665270	-1932.17	374.53
5	GUIDE	393614280	9.59	39566	-0.090	0.049	0.083	0.136	151.424144	41.634728	1397.00	-929.89
6	GUIDE	393616408	9.03	39584	-0.025	-0.060	0.073	0.117	150.713966	41.346840	671.33	1122.91
7	GUIDE	393616816	8.43	39598	-0.016	0.131	0.069	0.114	151.562975	40.925077	-1185.05	-915.59

## 2.4 Star Slots

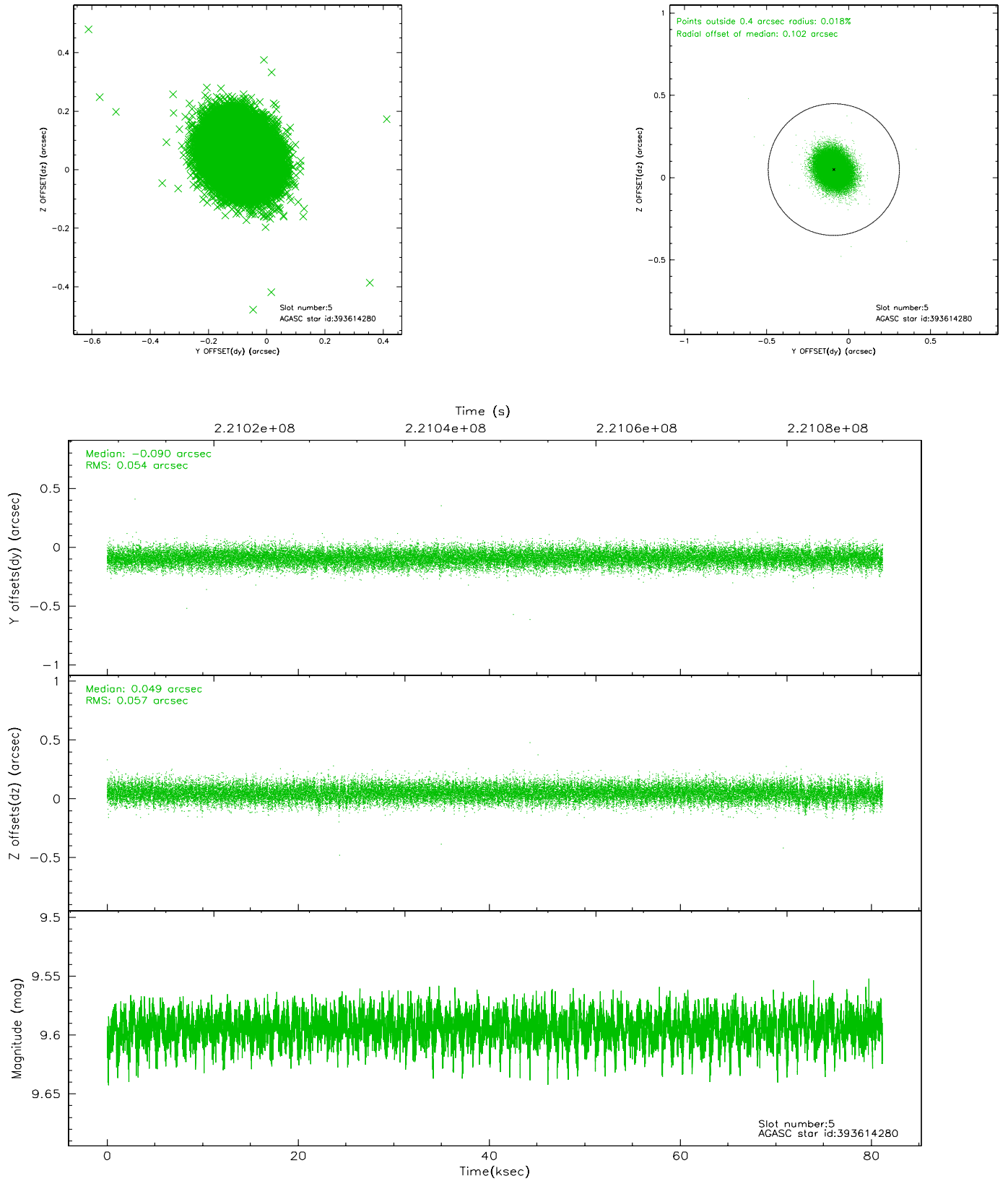
### 2.4.1 Slot 3



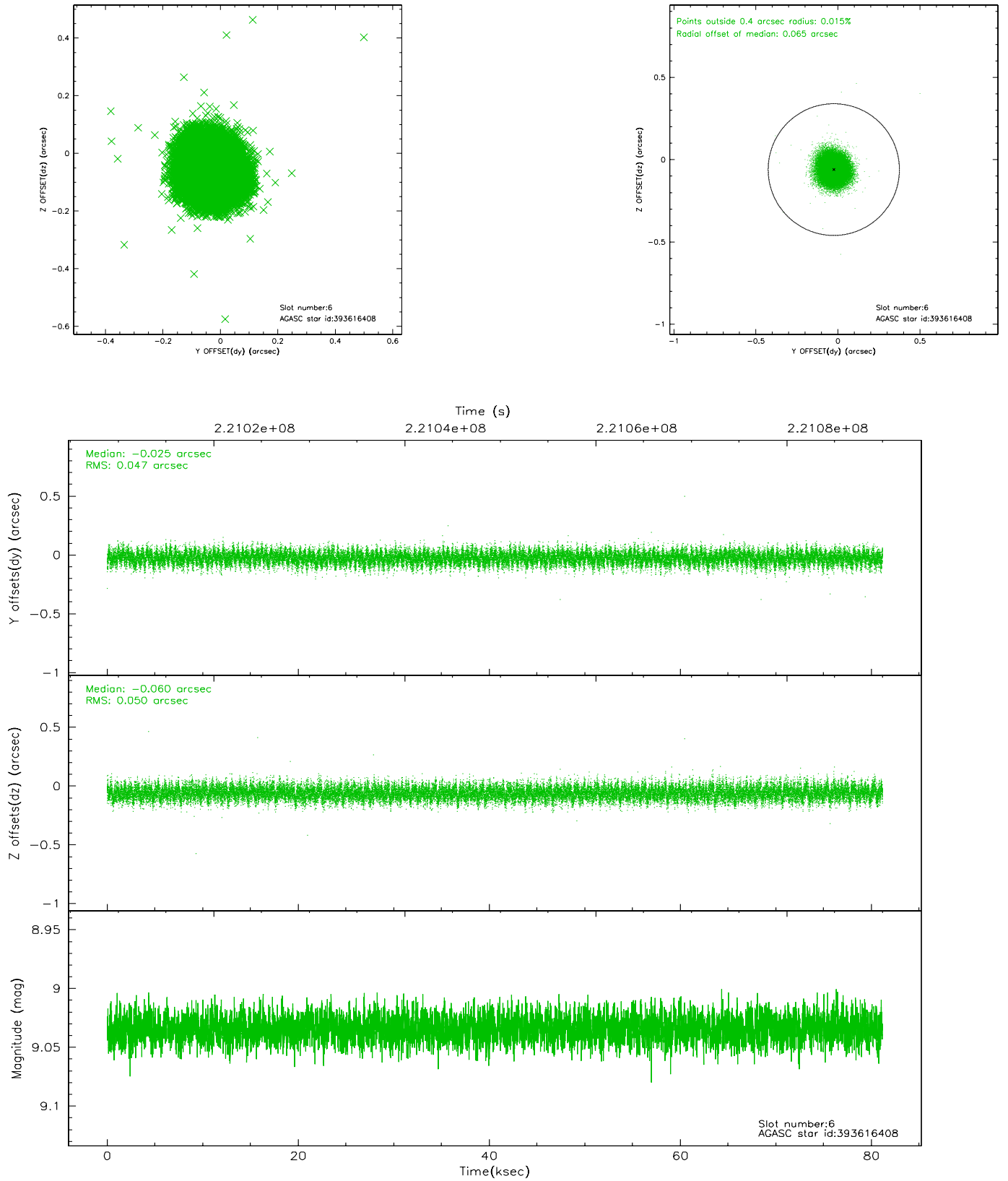
## 2.4.2 Slot 4



### 2.4.3 Slot 5

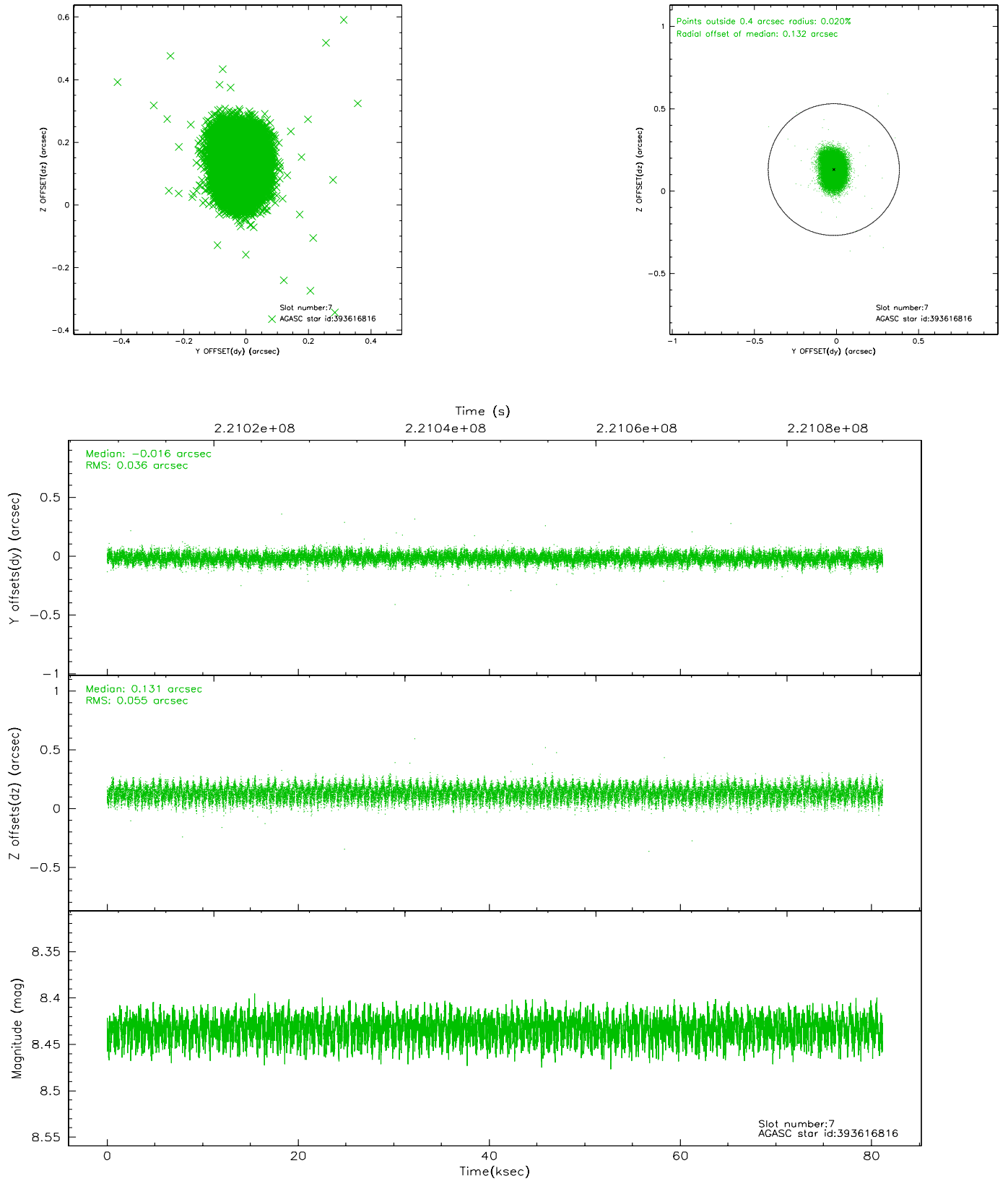


## 2.4.4 Slot 6



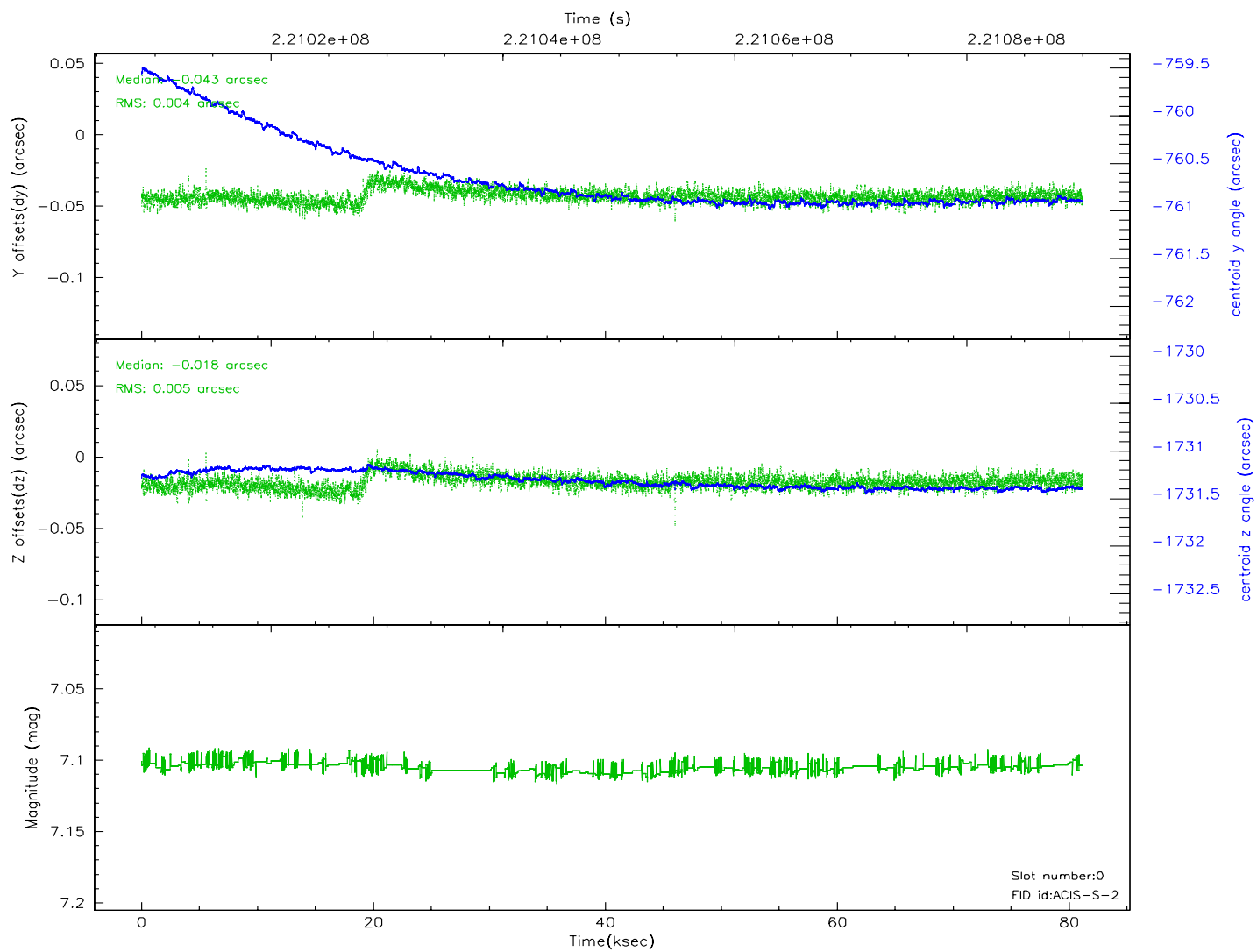
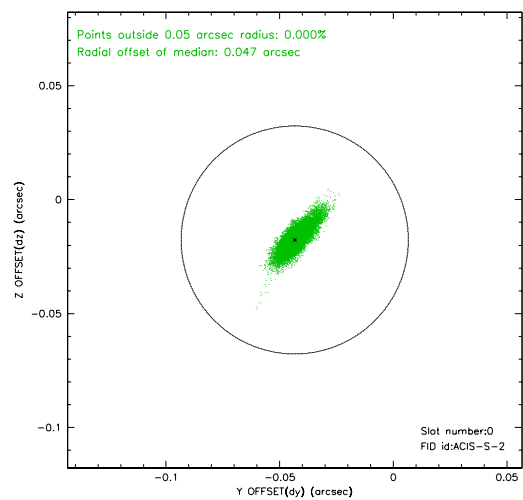
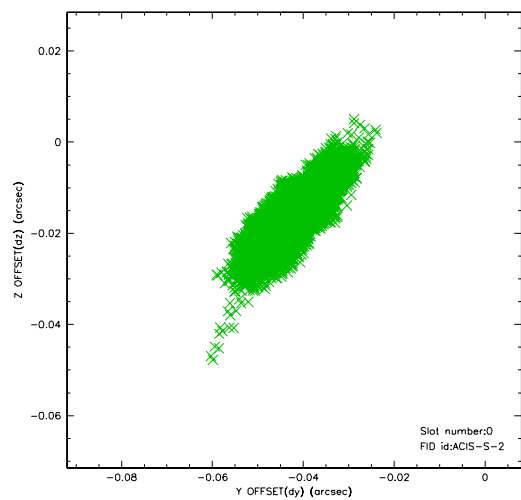


## 2.4.5 Slot 7

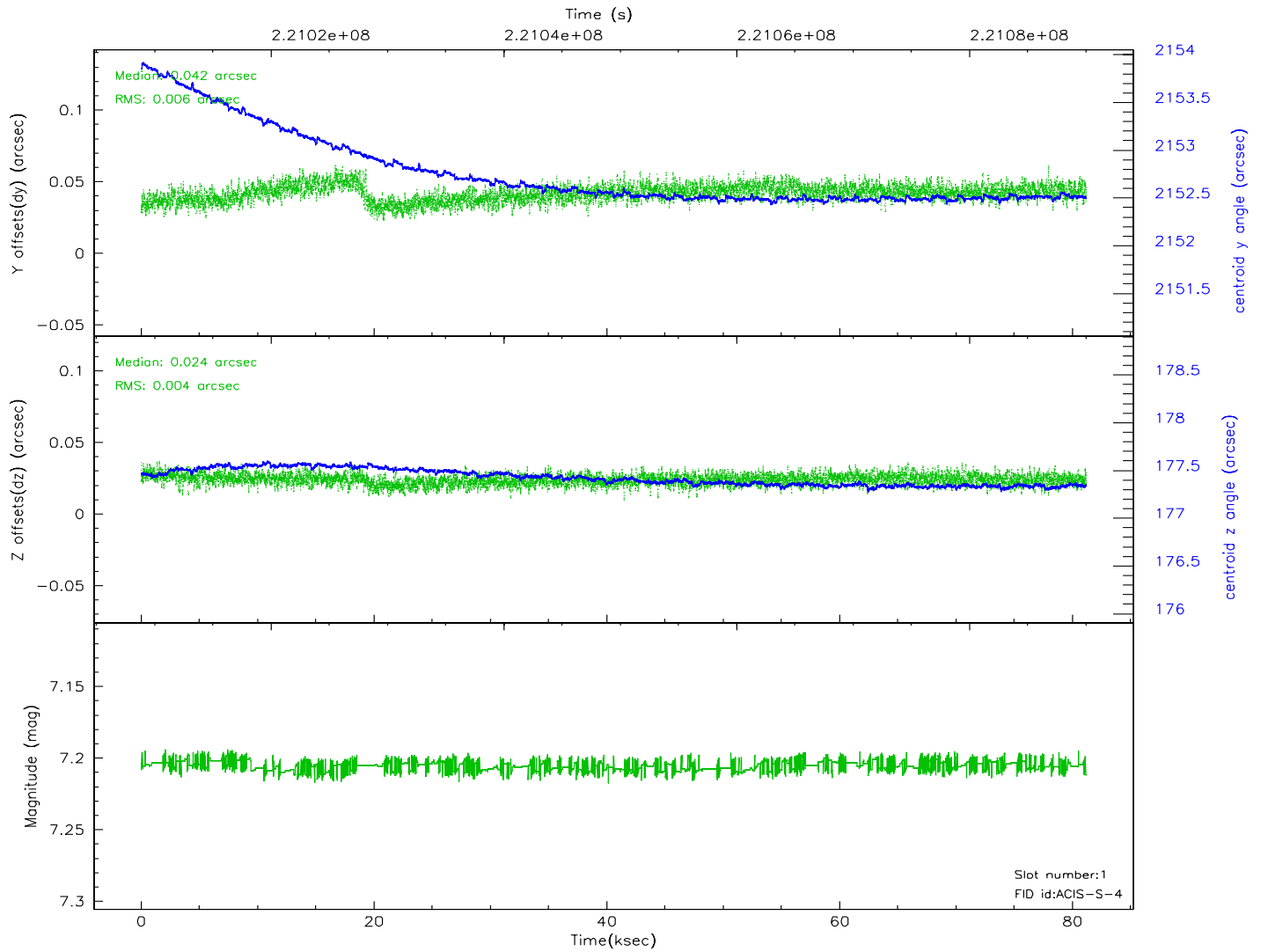
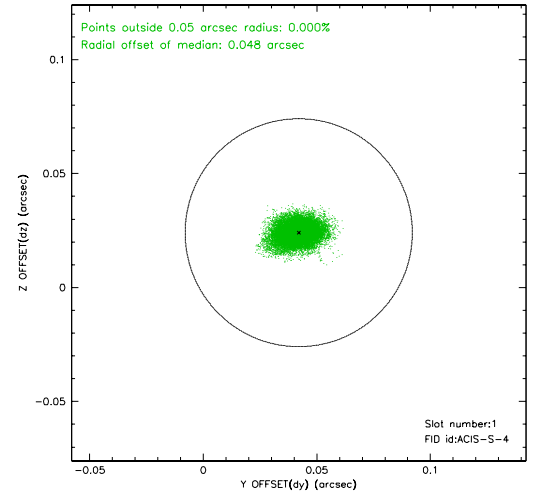
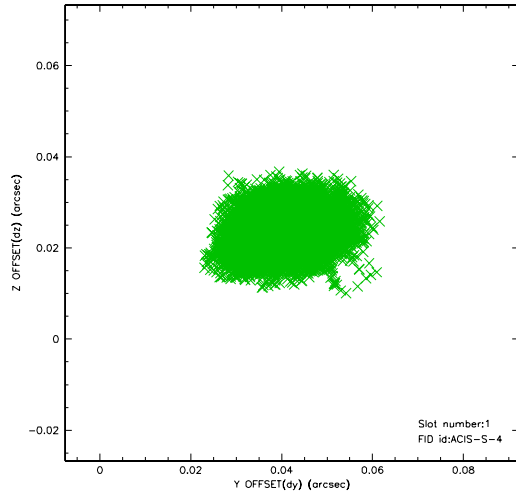


## 2.5 FID Slots

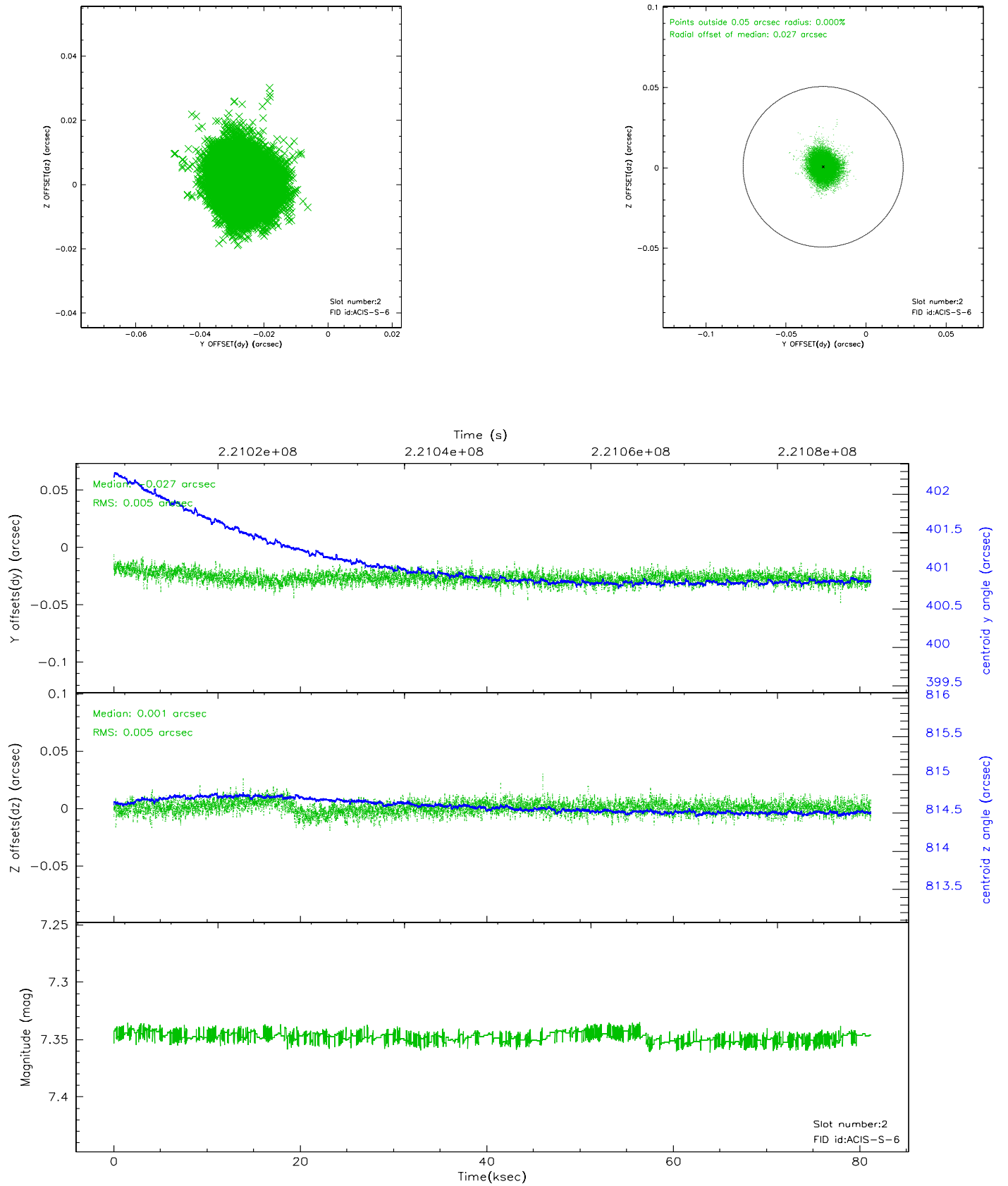
### 2.5.1 Slot 0



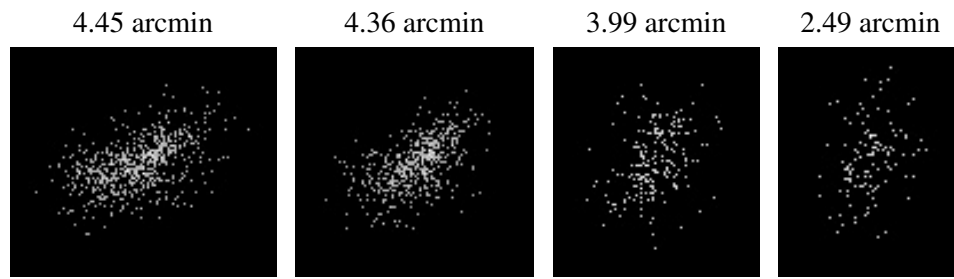
## 2.5.2 Slot 1



### 2.5.3 Slot 2



### 3 Point Sources



## A Summary

### A.1 Status

V&V Scientist	Jen Lauer
V&V Date (YYYY-MM-DD)	2006.03.16
V&V Edition	1
V&V Disposition and Status	OK
V&V Charge Time	81.081

### A.2 Comments