

# V&V Reference Report

## L2 ASCDS Version : 8.4.5

Observation 56554 - L2 Version 2  
Chandra X-Ray Center

L2 Processing Date : Jun 18 2012

## Contents

<b>1</b>	<b>Front</b>	<b>2</b>
<b>2</b>	<b>OBI</b>	<b>3</b>
2.1	OBI . . . . .	3
2.1.1	Images . . . . .	3
2.1.2	Bias . . . . .	3
2.1.3	Parameters . . . . .	4
2.1.4	Events . . . . .	4
2.2	Compared Parameters . . . . .	5
2.3	Star Slots . . . . .	6
2.4	FID Slots . . . . .	6
<b>A</b>	<b>Summary</b>	<b>7</b>
A.1	Status . . . . .	7
A.2	Comments . . . . .	7

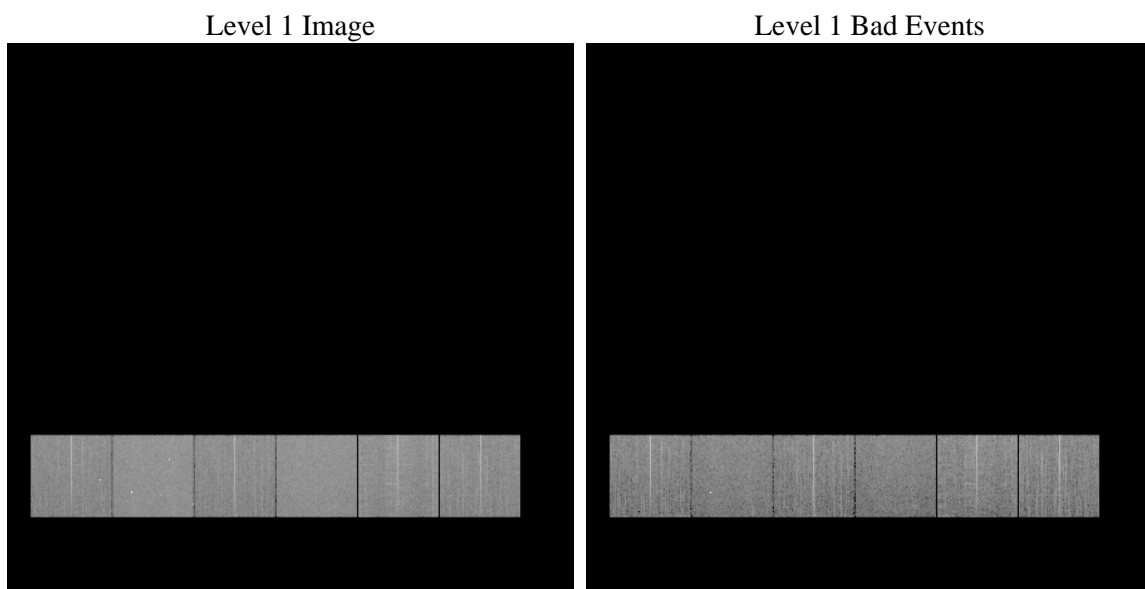
# 1 Front

seq_num	&#160	Sequence number
obs_id	56554	Observation id
title	ACIS-456789 diagnostics	Proposal title
observer	CHANDRA engineering request/realtime commanding	Principal investig
object	&#160	Source name
dtcycle	0	&#160
cycle	P	events from which exps? Prim/Second/Both
ra_targ	0.0	Observer's specified target RA [deg]
dec_targ	0.0	Observer's specified target Dec [deg]
ra_nom	330.02399481185	Nominal RA [deg]
dec_nom	-9.8164924979699	Nominal Dec [deg]
roll_nom	292.19562374478	Nominal Roll [deg]
revision	2	Processing version of data
ontime	7339.3430714011	Sum of GTIs [s]
livetime	7246.4078902092	Livetime [s]
ontime4	7339.2199513912	Sum of GTIs [s]
ontime5	7339.3020313978	Sum of GTIs [s]
ontime6	7339.2609913945	Sum of GTIs [s]
ontime7	7339.3430714011	Sum of GTIs [s]
ontime8	7339.1789113879	Sum of GTIs [s]
ontime9	7339.3841114044	Sum of GTIs [s]
l2events	421392	Number of level 2 events

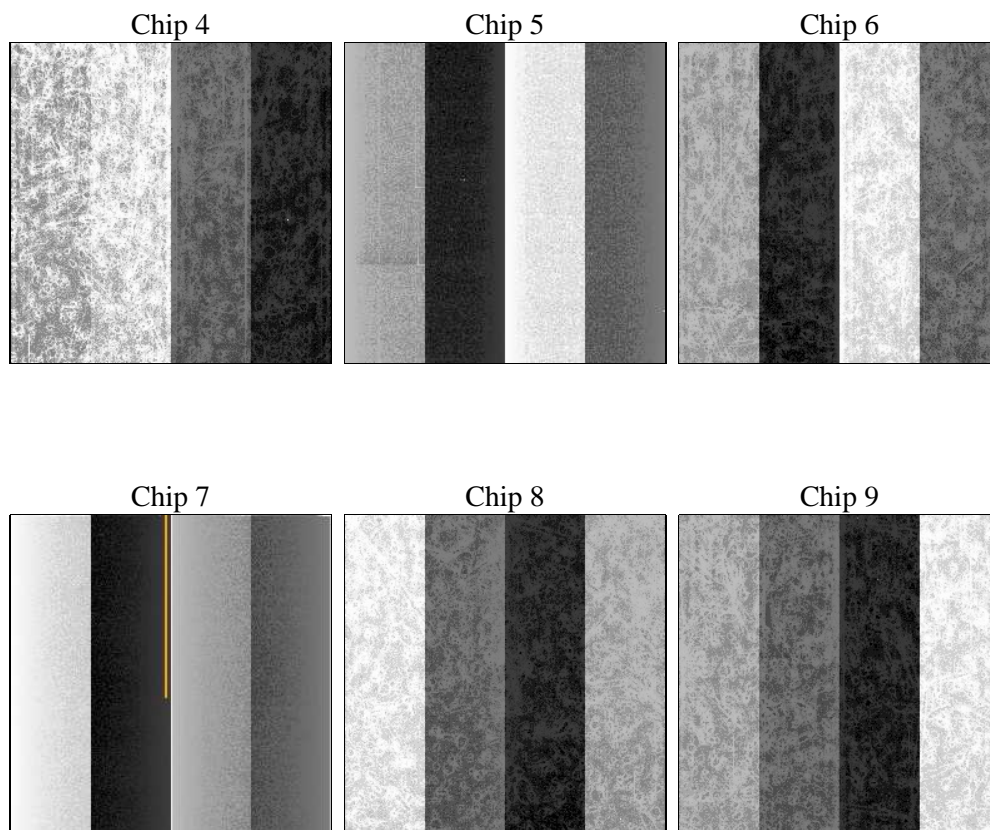
## 2 OBI

### 2.1 OBI

#### 2.1.1 Images



#### 2.1.2 Bias



### 2.1.3 Parameters

obi_num	0	Obi number	sched_exp_time	0.0	[s] Scheduled observation exposure time
ascdsver	8.4.5	Processing system revision	ontime	7339.3430714011	Sum of GTIs [s]
caldsver	4.4.10	&#160	ontime4	7339.2199513912	Sum of GTIs [s]
date	2012-06-18T23:18:50	Date and time of file creation	ontime5	7339.3020313978	Sum of GTIs [s]
revision	2	Processing version of data	ontime6	7339.2609913945	Sum of GTIs [s]
			ontime7	7339.3430714011	Sum of GTIs [s]
			ontime8	7339.1789113879	Sum of GTIs [s]
			ontime9	7339.3841114044	Sum of GTIs [s]
			l1events	909647	Number of level 1 events

### 2.1.4 Events

	ccd 4	ccd 5	ccd 6	ccd 7	ccd 8	ccd 9		ccd 4	ccd 5	ccd 6	ccd 7	ccd 8	ccd 9
level 1 events	138561	171629	137877	163230	158488	139862	grade 0 events	35424	13996	33469	17319	37325	32745
rejected events	76770	70934	74005	65635	81215	78308		25%	8%	24%	10%	23%	23%
rejected %	55%	41%	53%	40%	51%	55%	grade 1 events	368	227	252	162	291	260
								0%	0%	0%	0%	0%	0%
							grade 2 events	10056	35969	11530	21204	14935	11000
								7%	20%	8%	12%	9%	7%
							grade 3 events	4389	4577	4283	9152	5838	4194
								3%	2%	3%	5%	3%	2%
							grade 4 events	4190	4412	4338	8868	5586	4113
								3%	2%	3%	5%	3%	2%
							grade 5 events	3888	10051	4095	10528	5472	4697
								2%	5%	2%	6%	3%	3%
							grade 6 events	8075	42295	10607	41572	14043	9886
								5%	24%	7%	25%	8%	7%
							grade 7 events	72171	60102	69303	54425	74998	72967
								52%	35%	50%	33%	47%	52%

## 2.2 Compared Parameters

Parameter	Planned	Actual	Parameter	Planned	Actual
Instrument	ACIS	ACIS	Obspar format version number	7	7
Detector	ACIS-456789	ACIS-456789	Obspar file type	PREDICTED	ACTUAL
Grating	NONE	NONE	Obspar update status	NONE	UPDATED
Data mode	FAINT	FAINT	Number of optional ACIS chips dropped	0	0
Observation mode	SECONDARY	SECONDARY	On-chip summing requested	N	N
[deg] Pointing RA	0	330.0239948118544	Subarray requested	NONE	NONE
[deg] Pointing Dec	0	-9.816492497969854	Alternating exposures requested	N	N
[deg] Pointing Roll	0.0	292.1956237447819	[s] Primary exposure time	3.2	3.2
[mm] SIM focus pos	-1.429586	-0.6828225247311905			
[mm] SIM defocus	0.1037507710433287	0.8505141146731063			
[mm] SIM translation stage pos	250.455976	250.4635187648994			
[mm] SIM translation stage offset	0	-0.007540371344731511			
[s] Observation start time (MET)	378601487.094653	378601486.06966			
Observation start date	2009-12-30T23:04:47	2009-12-30T23:04:46			
[s] Observation end time (MET)	378612528.395211	378612527.37022			
Observation end date	2009-12-31T02:08:48	2009-12-31T02:08:47			
Read mode	TIMED	TIMED			

## 2.3 Star Slots

## 2.4 FID Slots

## **A Summary**

### **A.1 Status**

V&V Scientist	Beth Sundheim
V&V Date (YYYY-MM-DD)	2012.06.22
V&V Edition	1
V&V Disposition and Status	OK
V&V Charge Time	7.3393430714011

### **A.2 Comments**