

V&V Reference Report

L2 ASCDS Version : 8.4.3

Observation 55314 - L2 Version 2
Chandra X-Ray Center

L2 Processing Date : Mar 18 2012

Contents

1	Front	2
2	OBI	3
2.1	OBI	3
2.1.1	Images	3
2.1.2	Bias	3
2.1.3	Parameters	4
2.1.4	Events	4
2.2	Compared Parameters	5
2.3	Star Slots	6
2.4	FID Slots	6
A	Summary	7
A.1	Status	7
A.2	Comments	7

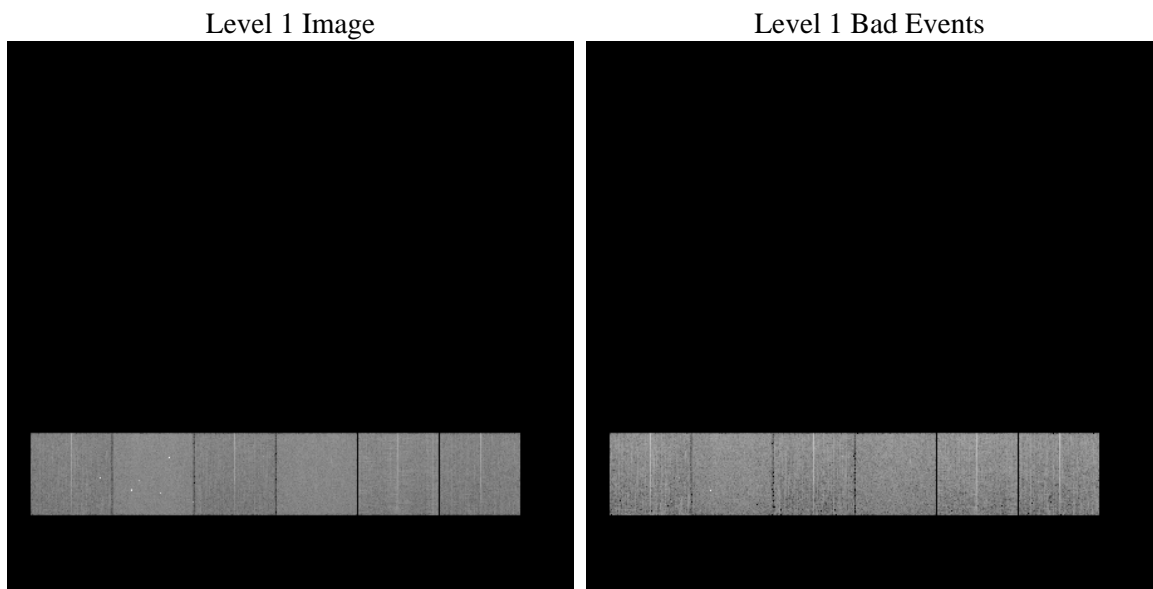
1 Front

seq_num	 	Sequence number
obs_id	55314	Observation id
title	ACIS-456789 diagnostics	Proposal title
observer	CHANDRA engineering request/realtime commanding	Principal investig
object	 	Source name
dtcycle	0	
cycle	P	events from which exps? Prim/Second/Both
ra_targ	0.0	Observer's specified target RA [deg]
dec_targ	0.0	Observer's specified target Dec [deg]
ra_nom	295.01494844591	Nominal RA [deg]
dec_nom	-44.973284014052	Nominal Dec [deg]
roll_nom	35.49632875384	Nominal Roll [deg]
revision	2	Processing version of data
ontime	8283.9556808472	Sum of GTIs [s]
livetime	8179.059246017	Livetime [s]
ontime4	8283.8325608373	Sum of GTIs [s]
ontime5	8283.9146408439	Sum of GTIs [s]
ontime6	8283.8736008406	Sum of GTIs [s]
ontime7	8283.9556808472	Sum of GTIs [s]
ontime8	8283.791520834	Sum of GTIs [s]
ontime9	8283.9967208505	Sum of GTIs [s]
l2events	334043	Number of level 2 events

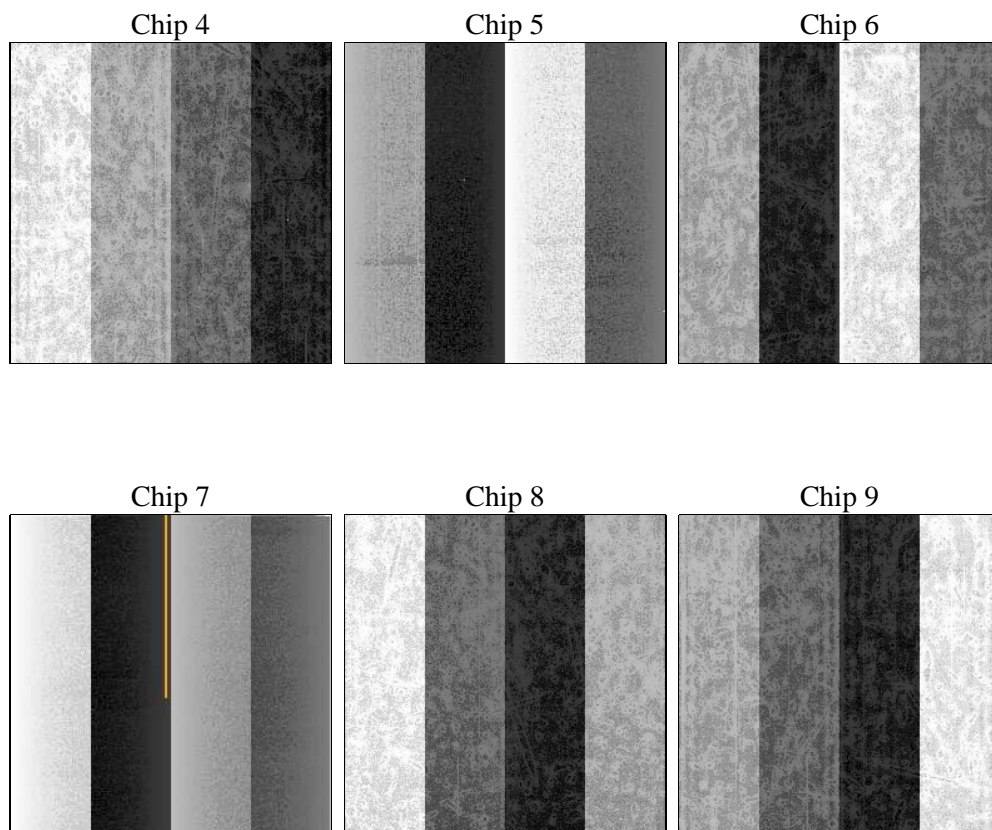
2 OBI

2.1 OBI

2.1.1 Images



2.1.2 Bias



2.1.3 Parameters

obi_num	0	Obi number	sched_exp_time	0.0	[s] Scheduled observation exposure time
ascdsver	8.4.3	Processing system revision	ontime	8283.9556808472	Sum of GTIs [s]
caldsver	4.4.8	 	ontime4	8283.8325608373	Sum of GTIs [s]
date	2012-03-18T18:18:29	Date and time of file creation	ontime5	8283.9146408439	Sum of GTIs [s]
revision	2	Processing version of data	ontime6	8283.8736008406	Sum of GTIs [s]
			ontime7	8283.9556808472	Sum of GTIs [s]
			ontime8	8283.791520834	Sum of GTIs [s]
			ontime9	8283.9967208505	Sum of GTIs [s]
			l1events	721342	Number of level 1 events

2.1.4 Events

	ccd 4	ccd 5	ccd 6	ccd 7	ccd 8	ccd 9		ccd 4	ccd 5	ccd 6	ccd 7	ccd 8	ccd 9
level 1 events	107318	141575	106743	133306	125276	107124	grade 0 events	28724	13833	26084	13257	29524	25753
rejected events	57866	59177	56389	56565	63360	58026		26%	9%	24%	9%	23%	24%
rejected %	53%	41%	52%	42%	50%	54%	grade 1 events	232	1035	144	117	161	148
								0%	0%	0%	0%	0%	0%
							grade 2 events	7837	27763	9140	16764	12000	8787
								7%	19%	8%	12%	9%	8%
							grade 3 events	3344	3452	3259	6868	4709	3405
								3%	2%	3%	5%	3%	3%
							grade 4 events	3326	3430	3328	6828	4467	3353
								3%	2%	3%	5%	3%	3%
							grade 5 events	3460	7464	3696	9186	4805	3993
								3%	5%	3%	6%	3%	3%
							grade 6 events	6221	33920	8543	33024	11216	7800
								5%	23%	8%	24%	8%	7%
							grade 7 events	54174	50678	52549	47262	58394	53885
								50%	35%	49%	35%	46%	50%

2.2 Compared Parameters

Parameter	Planned	Actual	Parameter	Planned	Actual
Instrument	ACIS	ACIS	Obspar format version number	7	7
Detector	ACIS-456789	ACIS-456789	Obspar file type	PREDICTED	ACTUAL
Grating	NONE	NONE	Obspar update status	NONE	UPDATED
Data mode	FAINT	FAINT	Number of optional ACIS chips dropped	0	0
Observation mode	SECONDARY	SECONDARY	On-chip summing requested	N	N
[deg] Pointing RA	0	295.0149484459058	Subarray requested	NONE	NONE
[deg] Pointing Dec	0	-44.97328401405185	Alternating exposures requested	N	N
[deg] Pointing Roll	0.0	35.49632875384001	[s] Primary exposure time	3.2	3.2
[mm] SIM focus pos	-1.429586	-1.428180813131781			
[mm] SIM defocus	0.1037507710433287	0.1051558262725154			
[mm] SIM translation stage pos	250.455976	250.466033080201			
[mm] SIM translation stage offset	0	-0.01005468664627074			
[s] Observation start time (MET)	425860004.220692	425860003.19568			
Observation start date	2011-06-30T22:26:44	2011-06-30T22:26:43			
[s] Observation end time (MET)	425881812.121819	425881811.09681			
Observation end date	2011-07-01T04:30:12	2011-07-01T04:30:11			
Read mode	TIMED	TIMED			

2.3 Star Slots

2.4 FID Slots

A Summary

A.1 Status

V&V Scientist	Beth Sundheim
V&V Date (YYYY-MM-DD)	2012.03.21
V&V Edition	1
V&V Disposition and Status	OK
V&V Charge Time	8.2839556808472

A.2 Comments