

V&V Reference Report

L2 ASCDS Version : 10.1.1

Observation 53224 - L2 Version 1
Chandra X-Ray Center

L2 Processing Date : Nov 17 2013

Contents

1	Front	2
2	OBI	3
2.1	OBI	3
2.1.1	Images	3
2.1.2	Bias	3
2.1.3	Parameters	4
2.1.4	Events	4
2.2	Compared Parameters	5
2.3	Star Slots	6
2.4	FID Slots	6
A	Summary	7
A.1	Status	7
A.2	Comments	7

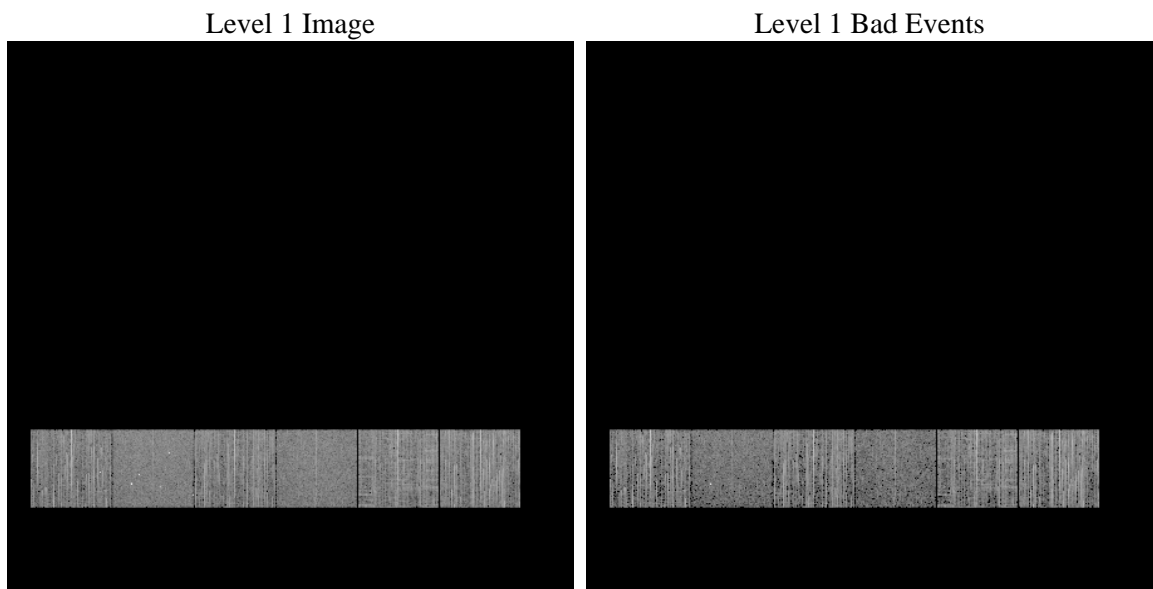
1 Front

seq_num	 	Sequence number
obs_id	53224	Observation id
title	ACIS-456789 diagnostics	Proposal title
observer	CHANDRA engineering request/realtime commanding	Principal investig
object	 	Source name
dtcycle	0	
cycle	P	events from which exps? Prim/Second/Both
ra_targ	0.0	Observer's specified target RA [deg]
dec_targ	0.0	Observer's specified target Dec [deg]
ra_nom	18.383844694958	Nominal RA [deg]
dec_nom	1.2541821359168	Nominal Dec [deg]
roll_nom	300.08026509201	Nominal Roll [deg]
revision	1	Processing version of data
ontime	3283.1651301384	Sum of GTIs [s]
livetime	3241.5917163759	Livetime [s]
ontime4	3285.9288211465	Sum of GTIs [s]
ontime5	3283.1651301384	Sum of GTIs [s]
ontime6	3283.1651301384	Sum of GTIs [s]
ontime7	3283.1651301384	Sum of GTIs [s]
ontime8	3285.8877811432	Sum of GTIs [s]
ontime9	3283.1651302576	Sum of GTIs [s]
l2events	86434	Number of level 2 events

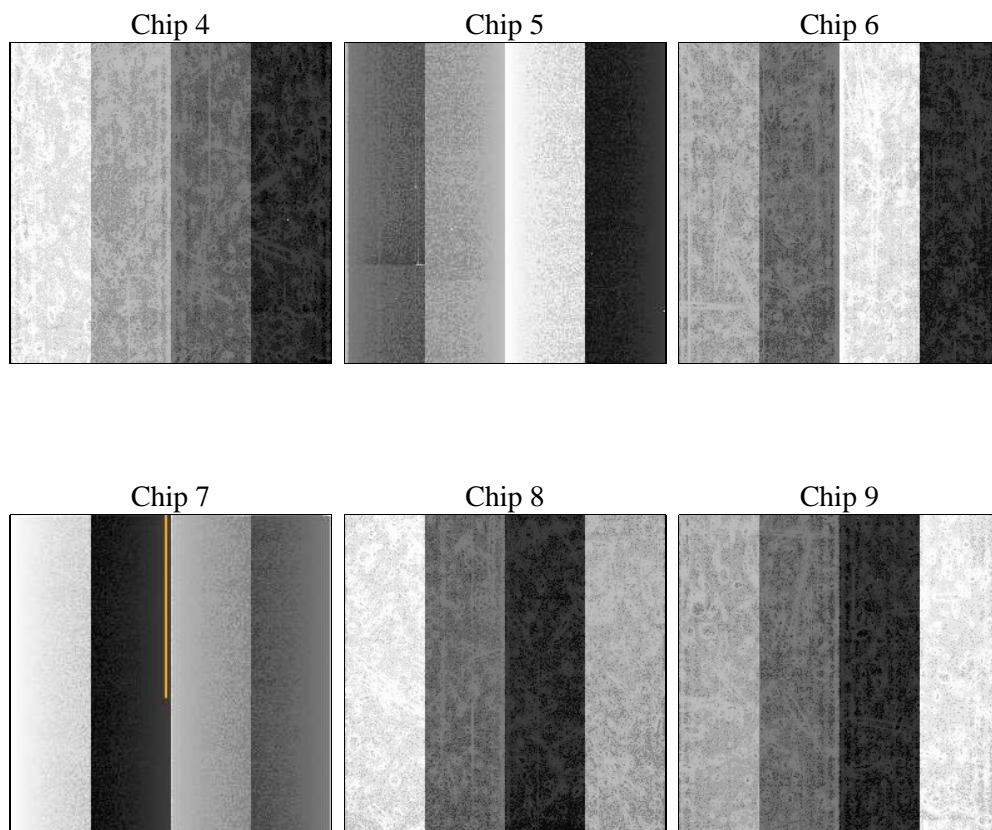
2 OBI

2.1 OBI

2.1.1 Images



2.1.2 Bias



2.1.3 Parameters

obi_num	0	Obi number	sched_exp_time	0.0	[s] Scheduled observation exposure time
ascdsver	10.1.1	Processing system revision	ontime	3283.1651301384	Sum of GTIs [s]
caldbver	4.5.8	 	ontime4	3285.9288211465	Sum of GTIs [s]
date	2013-11-17T20:24:07	Date and time of file creation	ontime5	3283.1651301384	Sum of GTIs [s]
revision	1	Processing version of data	ontime6	3283.1651301384	Sum of GTIs [s]
			ontime7	3283.1651301384	Sum of GTIs [s]
			ontime8	3285.8877811432	Sum of GTIs [s]
			ontime9	3283.1651302576	Sum of GTIs [s]
			l1events	338988	Number of level 1 events

2.1.4 Events

	ccd 4	ccd 5	ccd 6	ccd 7	ccd 8	ccd 9		ccd 4	ccd 5	ccd 6	ccd 7	ccd 8	ccd 9
level 1 events	56071	52721	56783	47326	59870	66217	grade 0 events	6682	3489	5924	3063	6859	5930
rejected events	43885	28808	44680	25740	44377	54328		11%	6%	10%	6%	11%	8%
rejected %	78%	54%	78%	54%	74%	82%	grade 1 events	49	65	22	31	38	40
								0%	0%	0%	0%	0%	0%
							grade 2 events	2184	8449	2438	5241	3192	2298
								3%	16%	4%	11%	5%	3%
							grade 3 events	854	894	836	1800	1203	818
								1%	1%	1%	3%	2%	1%
							grade 4 events	814	816	747	1768	1162	833
								1%	1%	1%	3%	1%	1%
							grade 5 events	1274	2458	1146	2871	1516	1422
								2%	4%	2%	6%	2%	2%
							grade 6 events	1652	10265	2158	9714	3077	2010
								2%	19%	3%	20%	5%	3%
							grade 7 events	42562	26285	43512	22838	42823	52866
								75%	49%	76%	48%	71%	79%

2.2 Compared Parameters

Parameter	Planned	Actual	Parameter	Planned	Actual
Instrument	ACIS	ACIS	Obspar format version number	7	7
Detector	ACIS-456789	ACIS-456789	Obspar file type	PREDICTED	ACTUAL
Grating	NONE	NONE	Obspar update status	NONE	UPDATED
Data mode	FAINT	FAINT	Number of optional ACIS chips dropped	0	0
Observation mode	SECONDARY	SECONDARY	On-chip summing requested	N	N
[deg] Pointing RA	0	18.38384469495784	Subarray requested	NONE	NONE
[deg] Pointing Dec	0	1.254182135916848	Alternating exposures requested	N	N
[deg] Pointing Roll	0.0	300.0802650920074	[s] Primary exposure time	3.2	3.2
[mm] SIM focus pos	-1.429586	-1.428180813131781			
[mm] SIM defocus	0.1037507710433287	0.1051558262725154			
[mm] SIM translation stage pos	250.455976	250.466033080201			
[mm] SIM translation stage offset	0	-0.01005468664627074			
[s] Observation start time (MET)	501070466.082762	501070465.05776			
Observation start date	2013-11-17T10:14:26	2013-11-17T10:14:25			
[s] Observation end time (MET)	501077784.583163	501077783.55816			
Observation end date	2013-11-17T12:16:25	2013-11-17T12:16:23			
Read mode	TIMED	TIMED			

2.3 Star Slots

2.4 FID Slots

A Summary

A.1 Status

V&V Scientist	Joy Nichols
V&V Date (YYYY-MM-DD)	2013.11.18
V&V Edition	1
V&V Disposition and Status	OK
V&V Charge Time	3.2831651301384

A.2 Comments