

# V&V Reference Report

## L2 ASCDS Version : 7.6.7.2

Observation 4844 - L2 Version 001  
Chandra X-Ray Center

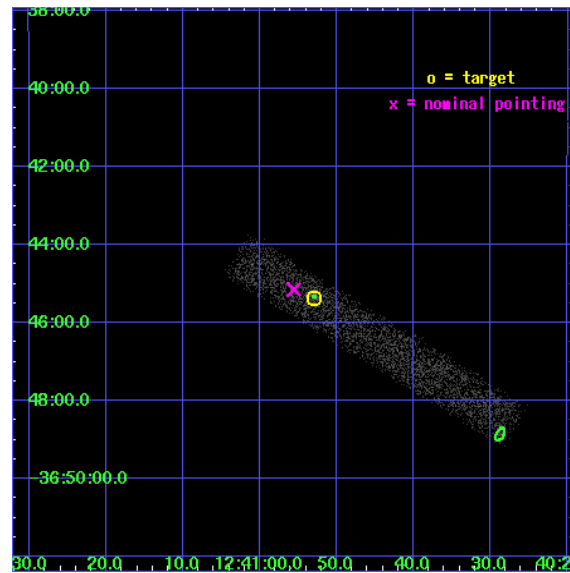
L2 Processing Date : May 31 2006

## Contents

<b>1</b>	<b>Front</b>	<b>2</b>
<b>2</b>	<b>OBI</b>	<b>3</b>
2.1	OBI . . . . .	3
2.1.1	Images . . . . .	3
2.1.2	Bias . . . . .	3
2.1.3	Parameters . . . . .	4
2.1.4	Events . . . . .	4
2.2	Compared Parameters . . . . .	5
2.3	Aspect . . . . .	6
2.4	Star Slots . . . . .	9
2.4.1	Slot 3 . . . . .	9
2.4.2	Slot 4 . . . . .	10
2.4.3	Slot 5 . . . . .	11
2.4.4	Slot 6 . . . . .	12
2.4.5	Slot 7 . . . . .	13
2.5	FID Slots . . . . .	14
2.5.1	Slot 0 . . . . .	14
2.5.2	Slot 1 . . . . .	15
2.5.3	Slot 2 . . . . .	16
<b>3</b>	<b>Point Sources</b>	<b>17</b>
<b>A</b>	<b>Summary</b>	<b>18</b>
A.1	Status . . . . .	18
A.2	Comments . . . . .	18

# 1 Front

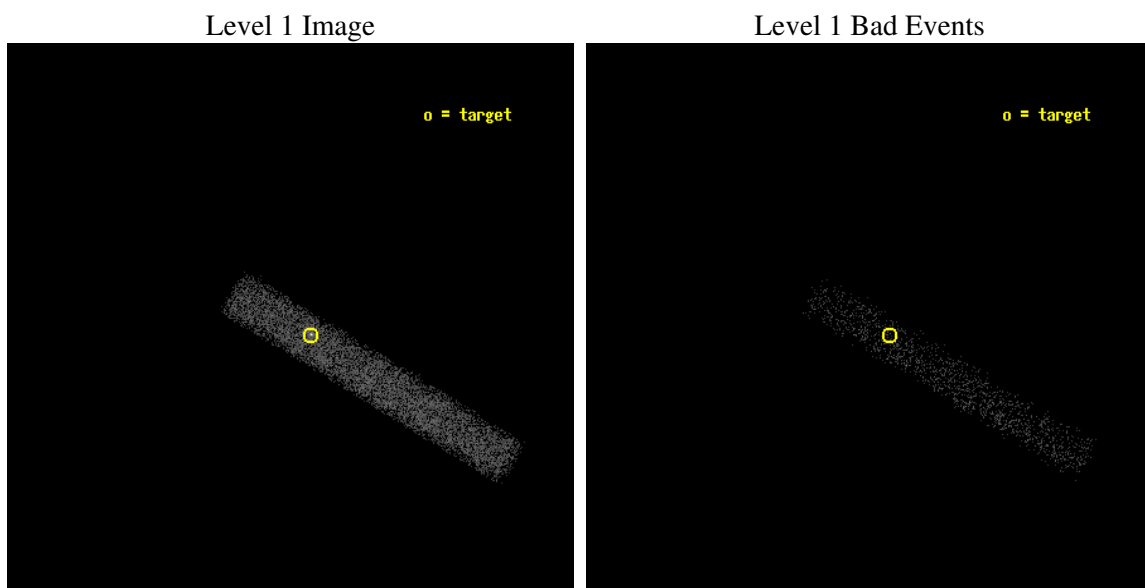
seq_num	700926
obs_id	4844
title	Are there any true Seyfert 2 nuclei?
observer	Prof RICHARD POGGE
object	IC 3639
dtcycle	0
cycle	P
ra_targ	190.220417
dec_targ	-36.756111
ra_nom	190.23167128456
dec_nom	-36.752553053733
roll_nom	31.209817461245
revision	2
ontime	9605.6001431346
livetime	8711.772304675
ontime7	9605.6001431346
l2events	5102



## 2 OBI

### 2.1 OBI

#### 2.1.1 Images



#### 2.1.2 Bias

Chip 7



### 2.1.3 Parameters

obi_num	0
ascdsver	7.6.7.2
caldbver	3.2.2
date	2006-05-31T13:01:30
revision	2

sched_exp_time	9151.000000
ontime	10011.055989027
ontime7	10011.055989027
l1events	12387

### 2.1.4 Events

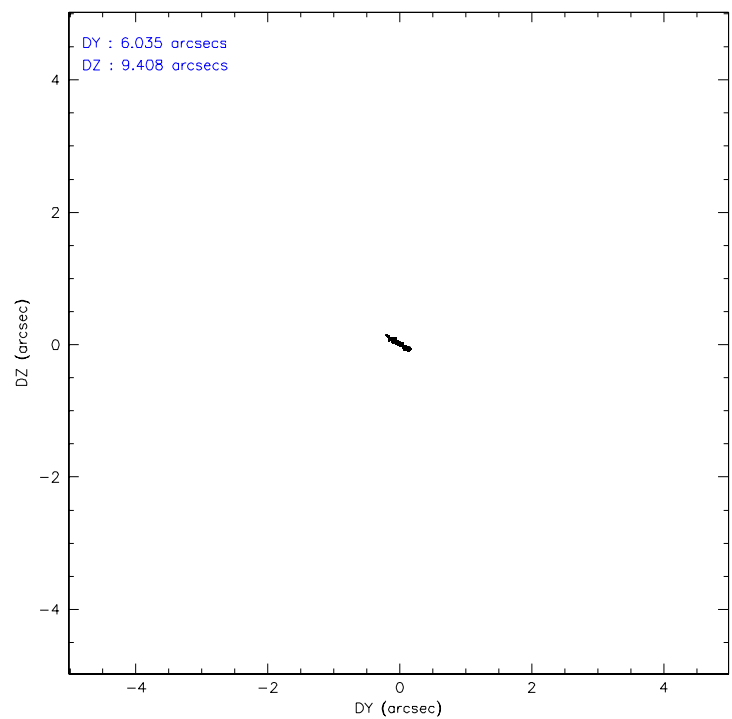
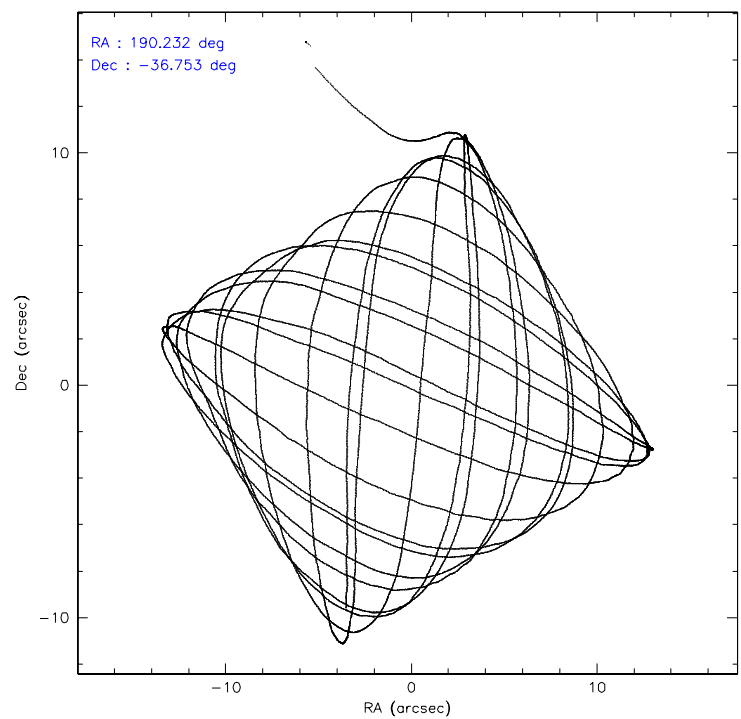
	<b>ccd 7</b>
level 1 events	12387
rejected events	7055
rejected %	56%

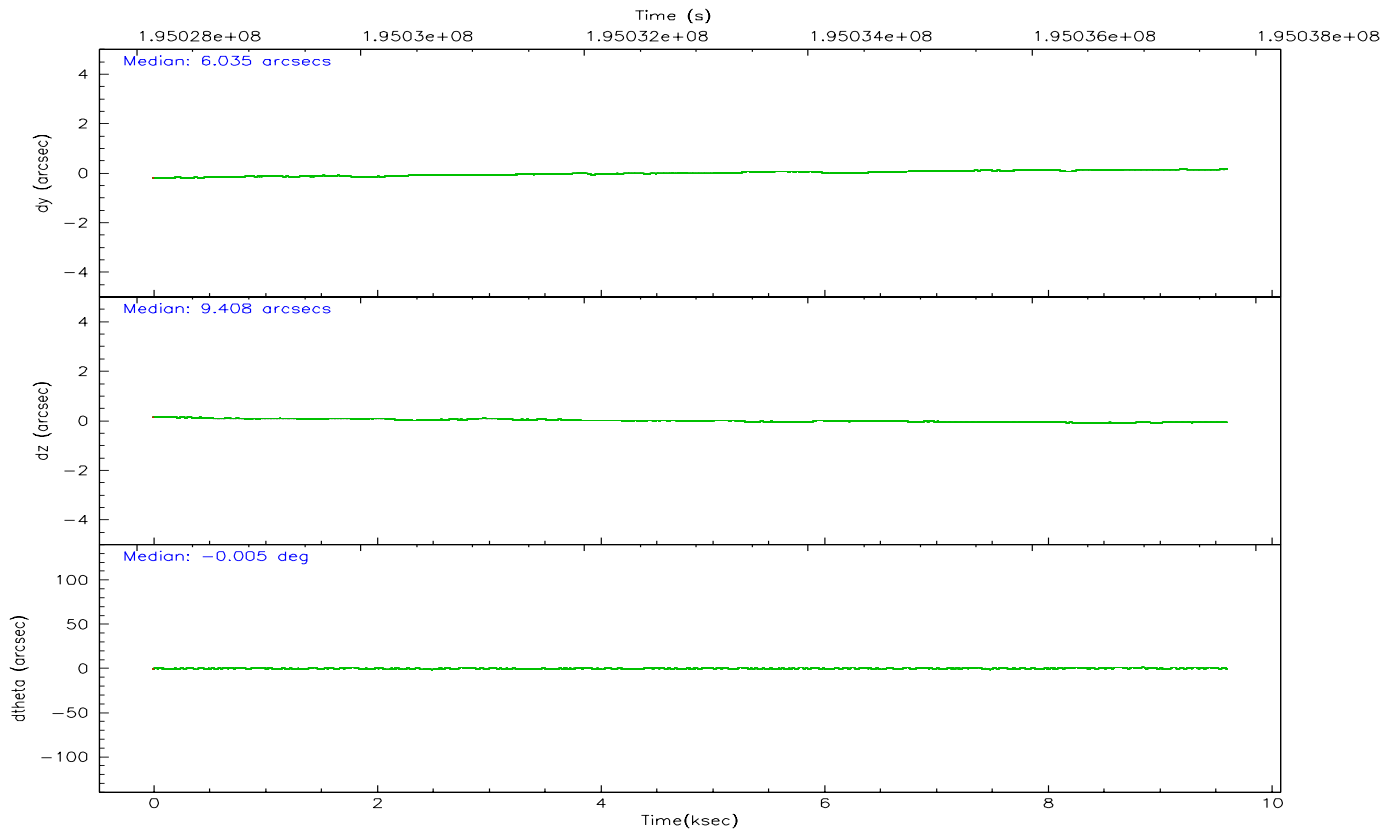
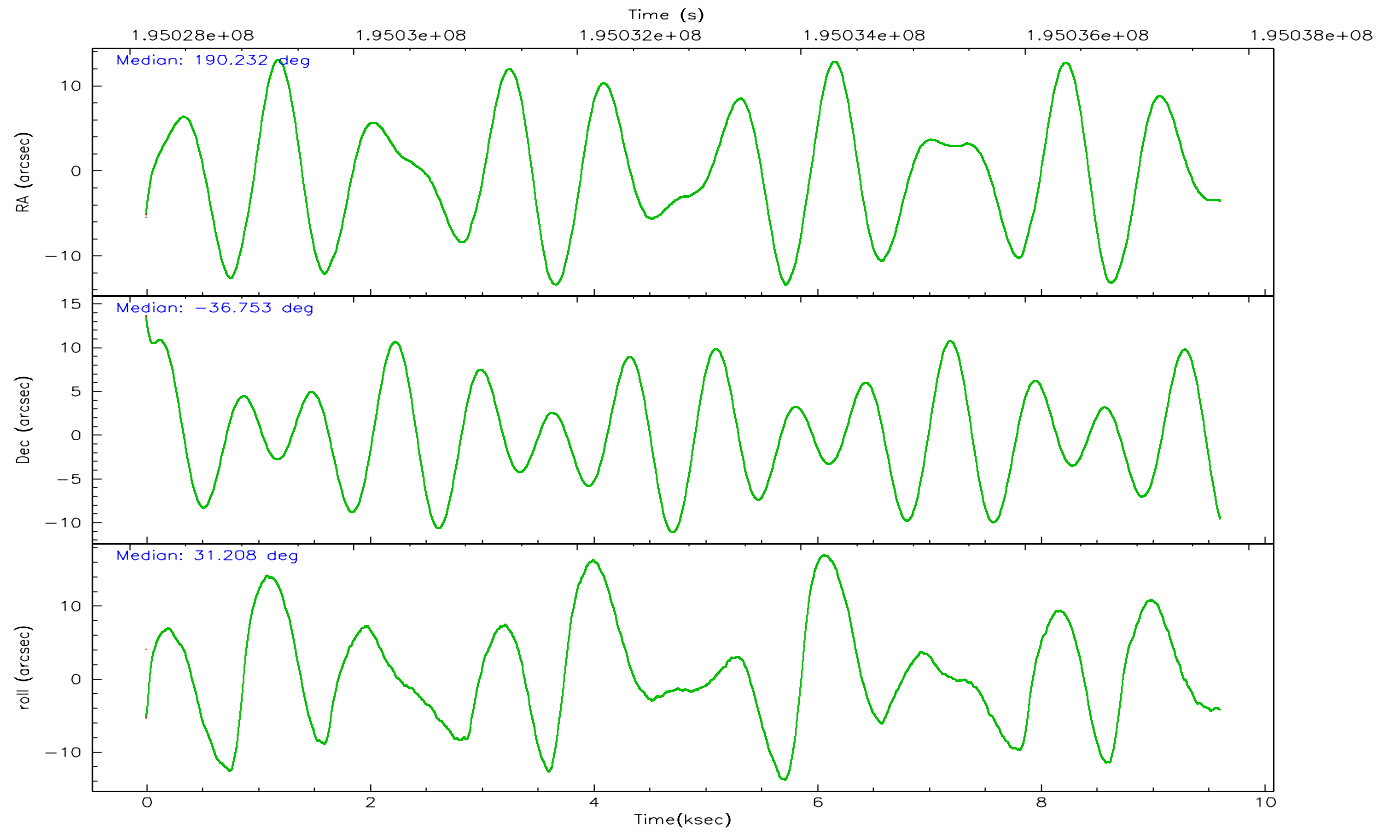
	<b>ccd 7</b>
grade 0 events	545
	4%
grade 1 events	11
	0%
grade 2 events	1313
	10%
grade 3 events	587
	4%
grade 4 events	567
	4%
grade 5 events	853
	6%
grade 6 events	2534
	20%
grade 7 events	5977
	48%

## 2.2 Compared Parameters

Parameter	Planned	Actual	Parameter	Planned	Actual
Instrument	ACIS	ACIS	Obspar format version number	6	6
Detector	ACIS-7	ACIS-7	Obspar file type	PREDICTED	ACTUAL
Grating	NONE	NONE	Obspar update status	NONE	UPDATED
Data mode	FAINT	FAINT	On-chip summing requested	N	N
Observation mode	POINTING	POINTING	Subarray requested	1/8	1/8
Pointing RA	190.215703	190.2316712845567	Subarray start row	0	449
Pointing Dec	-36.776666	-36.75255305373278	Subarray row count	1024	128
Pointing Roll	31.043633	31.2098174612446	Alternating exposures requested	N	N
SIM focus pos (mm)	-0.684267	-0.6828225247311905	Primary exposure time	0.000000	0.4
SIM defocus (mm)	0	0.001444936568705701			
SIM translation stage pos (mm)	-190.132523	-190.1400660498719			
SIM translation stage offset (mm)	0	0.00754346686406393			
Observation start time	195028593.184000	195027495.39805			
Observation start date	2004-03-07T06:35:29	2004-03-07T06:18:15			
Observation end time	195037744.184000	195038946.69855			
Observation end date	2004-03-07T09:08:00	2004-03-07T09:29:06			
Read mode	TIMED	TIMED			

## 2.3 Aspect





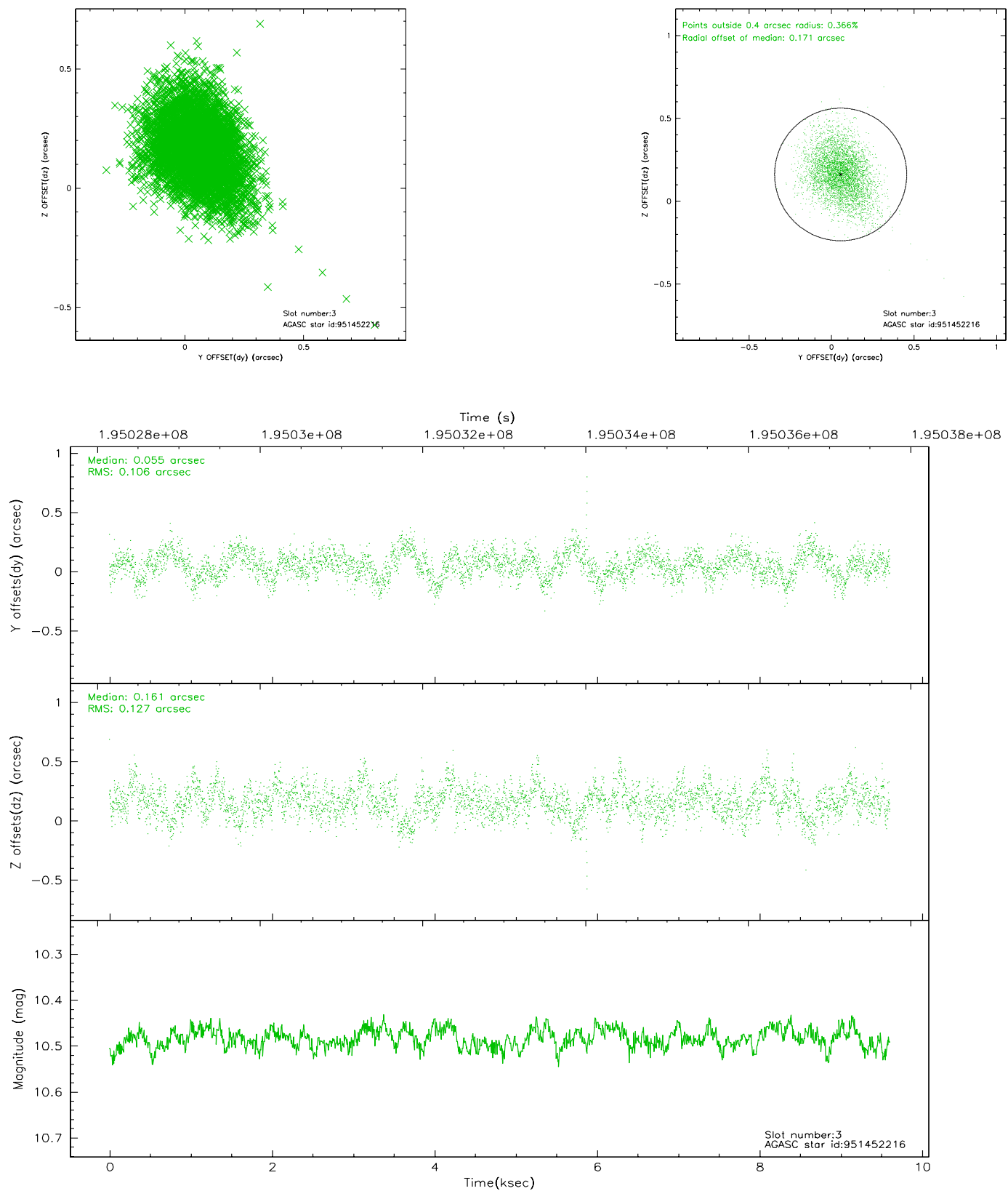
### Slot Statistics

slot	status	id	mag	n_pts	med_dy	med_dz	dr1	dr2	ra	dec	mean_y	mean_z
0	FID	ACIS-S-1	7.18	2344	0.015	0.014	0.005	0.009	0.000000	0.000000	937.29	-1726.27
1	FID	ACIS-S-2	7.10	2344	-0.038	-0.013	0.007	0.011	0.000000	0.000000	-758.36	-1731.41
2	FID	ACIS-S-5	7.23	2344	-0.000	0.006	0.006	0.011	0.000000	0.000000	-1812.13	170.72
3	GUIDE	951452216	10.48	4645	0.055	0.161	0.173	0.289	190.247007	-37.484924	-1238.11	-2230.45
4	GUIDE	951452224	9.94	4683	0.062	0.049	0.167	0.282	190.307510	-37.419411	-968.45	-2118.33
5	GUIDE	951454344	9.25	4686	0.144	0.028	0.087	0.141	189.998907	-37.289544	-1484.59	-1262.70
6	GUIDE	951461312	7.99	4686	-0.266	-0.088	0.092	0.142	190.774379	-36.461534	1968.02	133.62
7	GUIDE	951462504	9.58	4683	-0.000	-0.147	0.108	0.183	190.129636	-36.504997	291.46	966.37

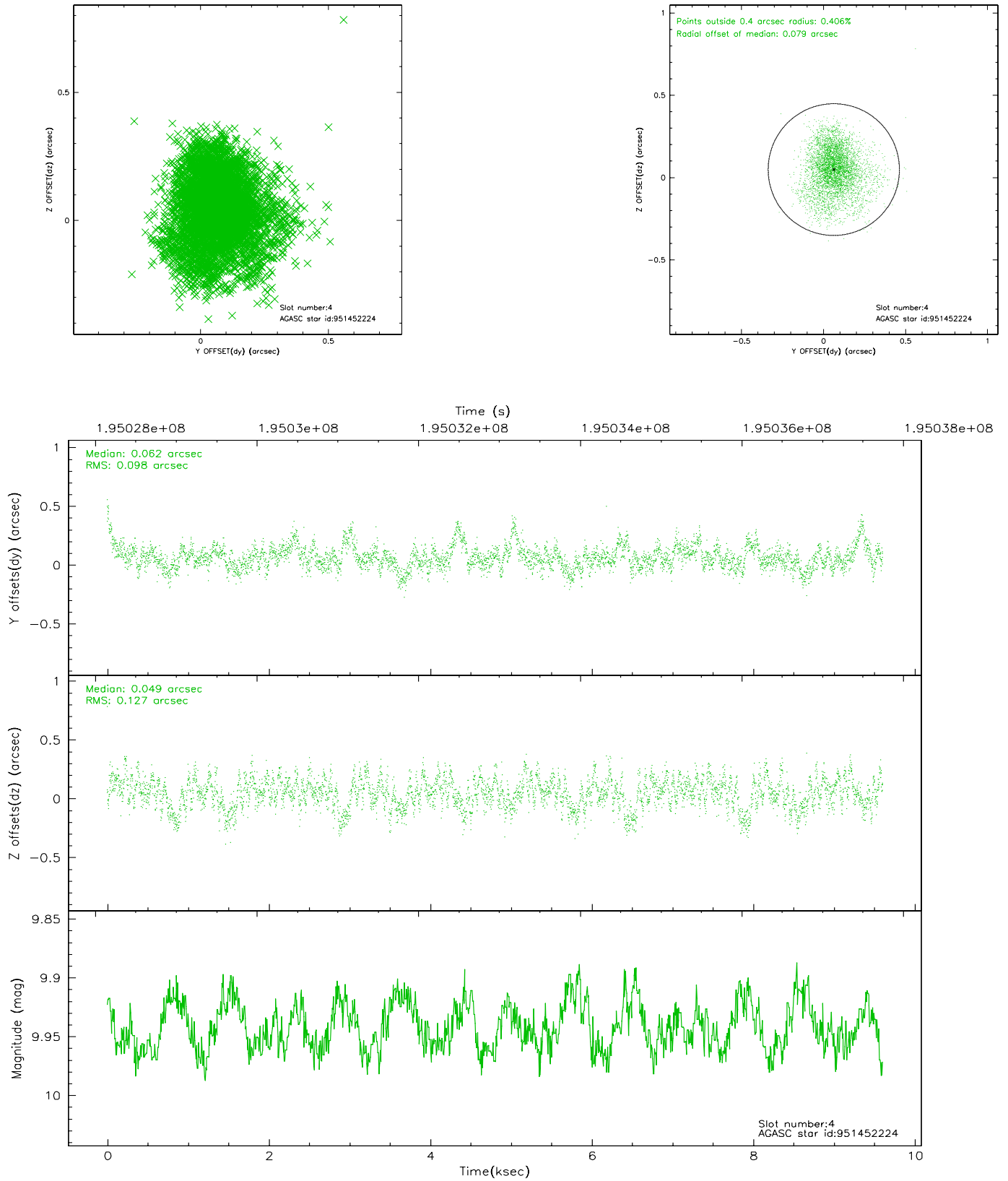


## 2.4 Star Slots

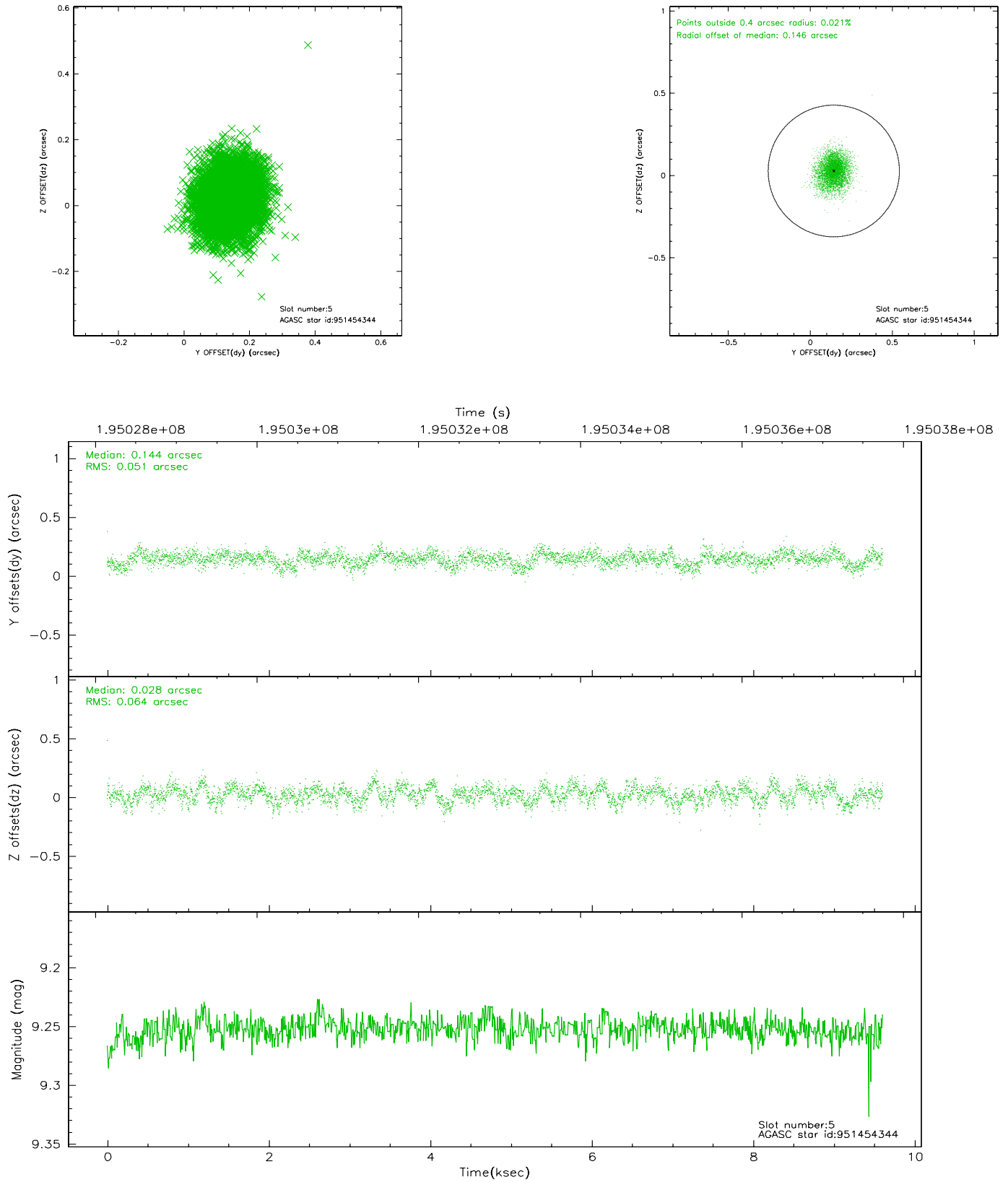
### 2.4.1 Slot 3



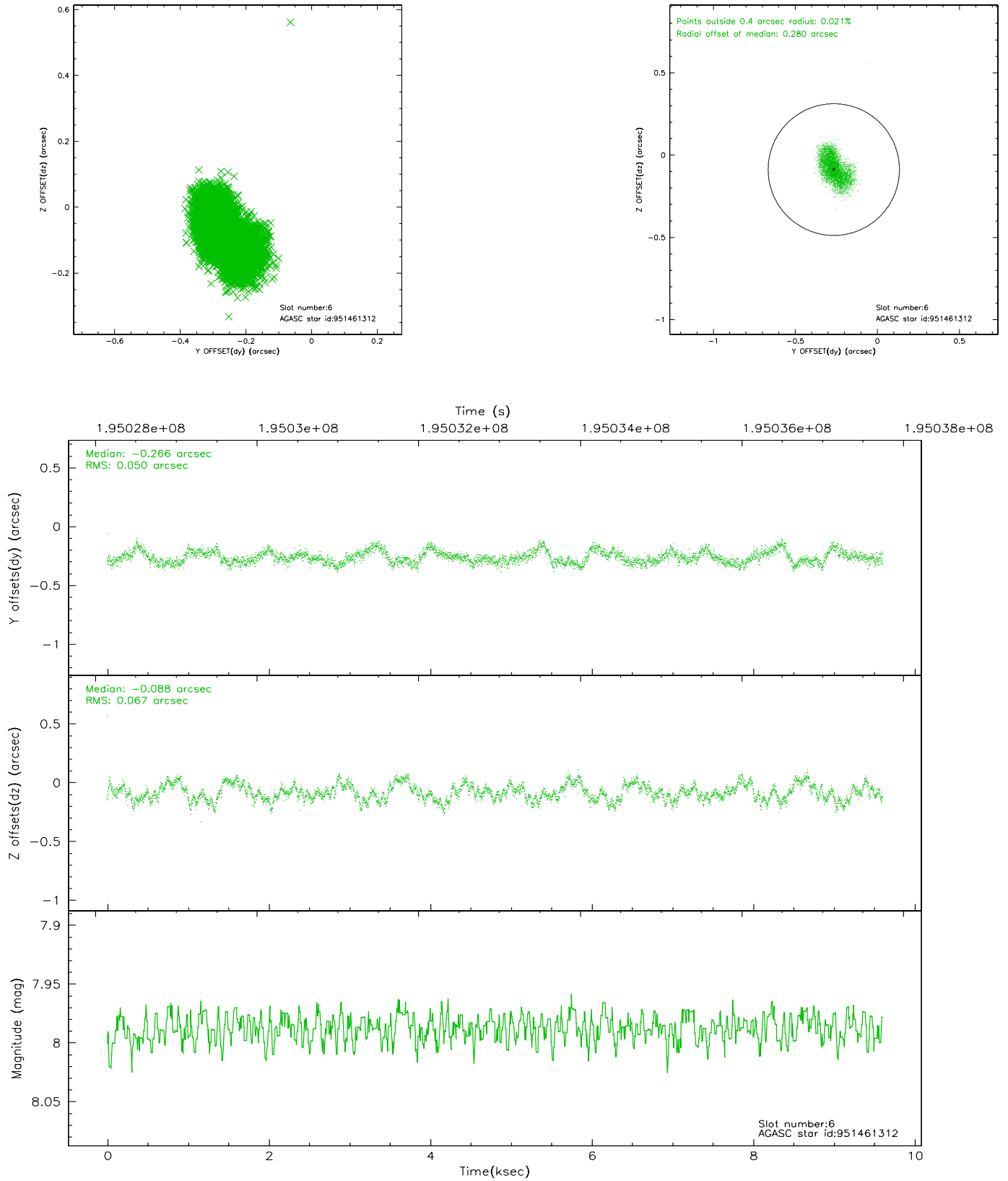
## 2.4.2 Slot 4



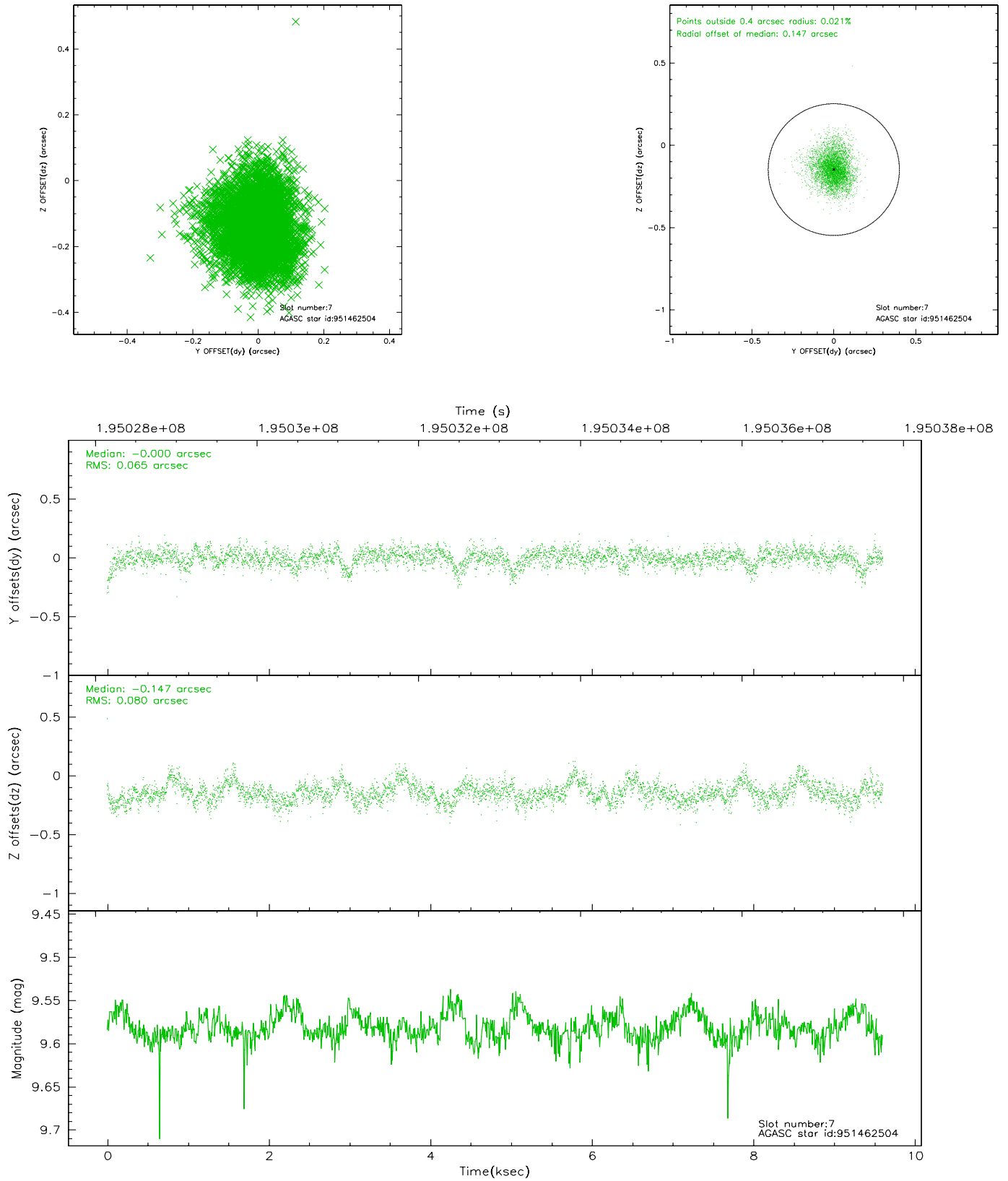
### 2.4.3 Slot 5



## 2.4.4 Slot 6

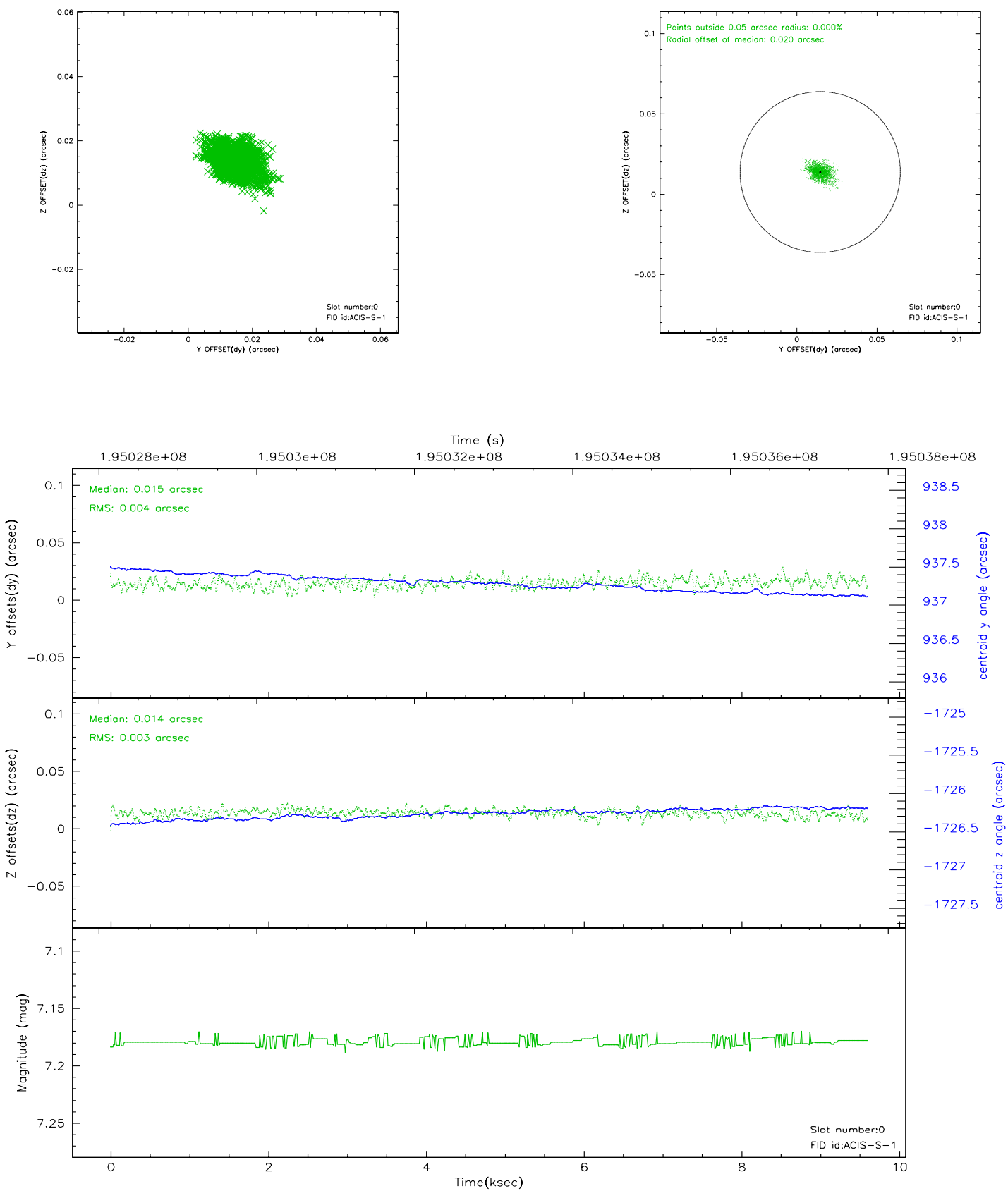


## 2.4.5 Slot 7

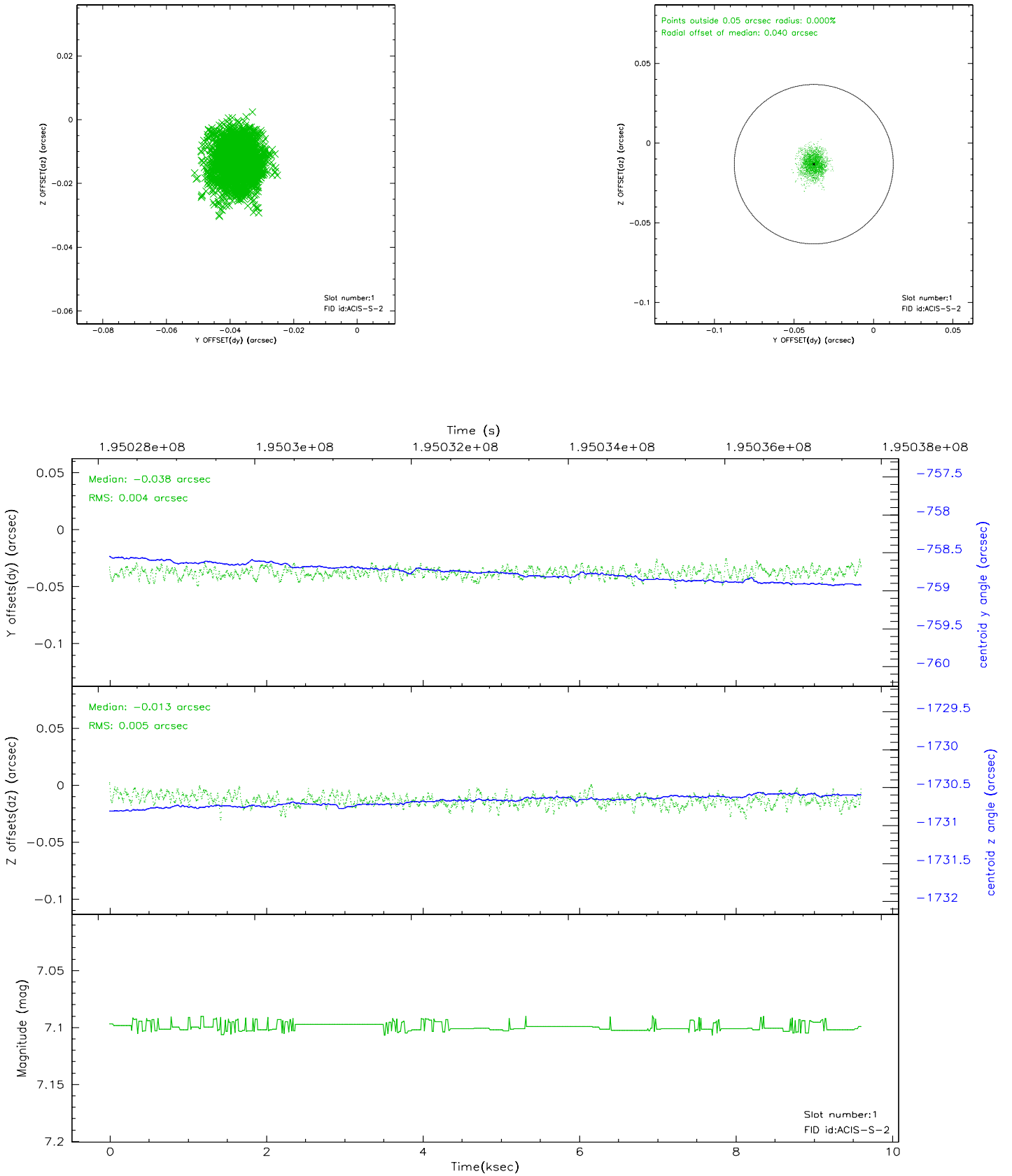


## 2.5 FID Slots

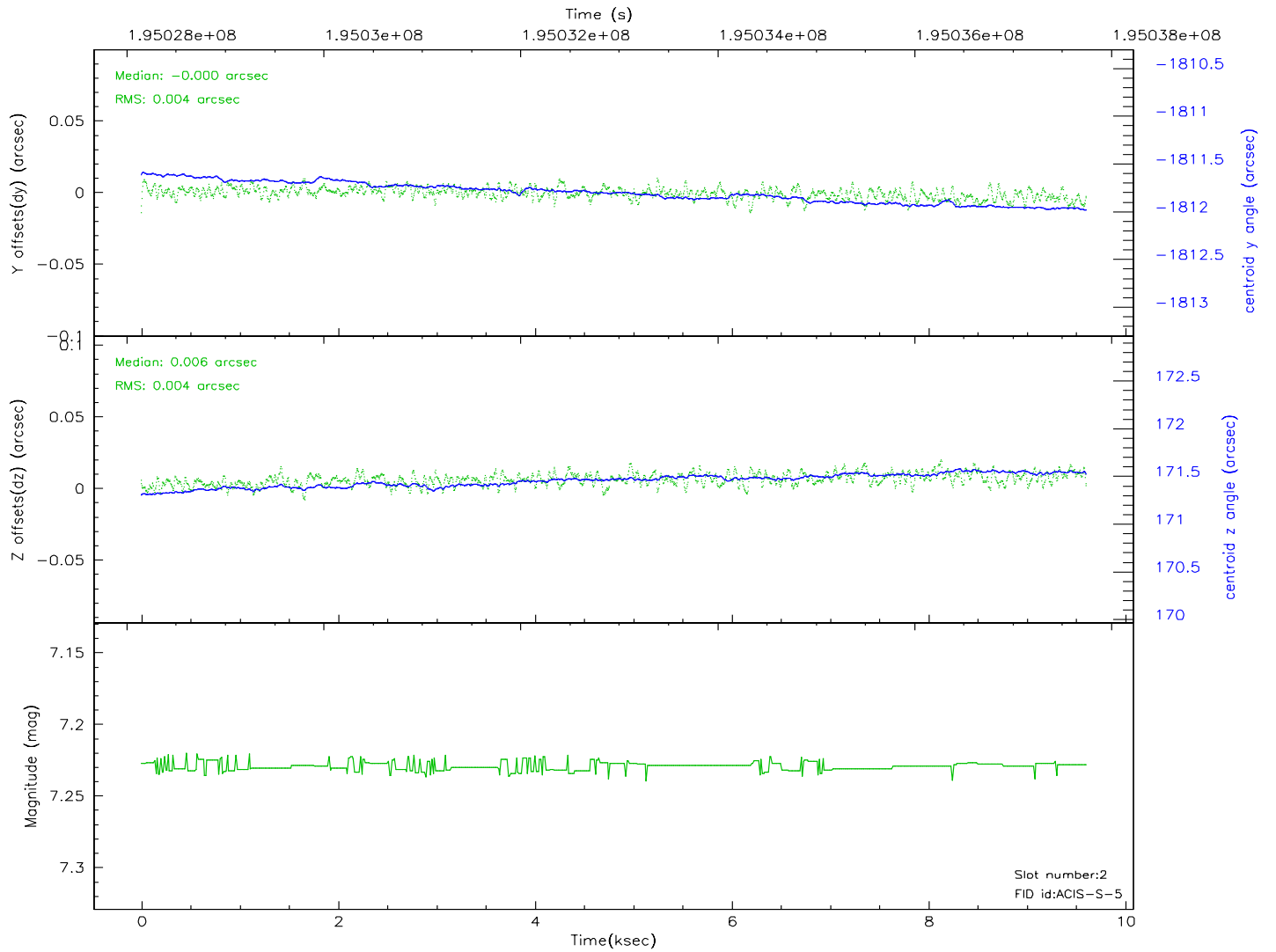
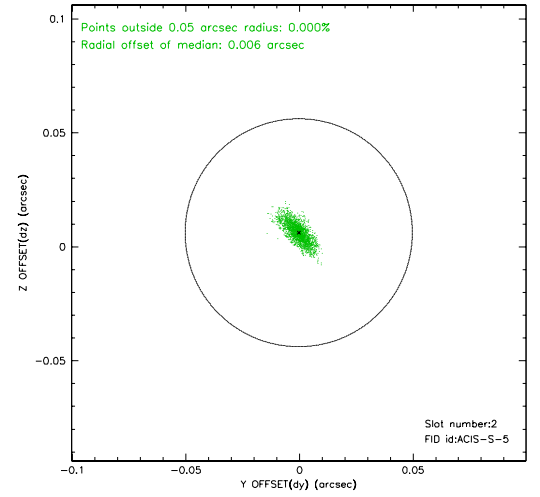
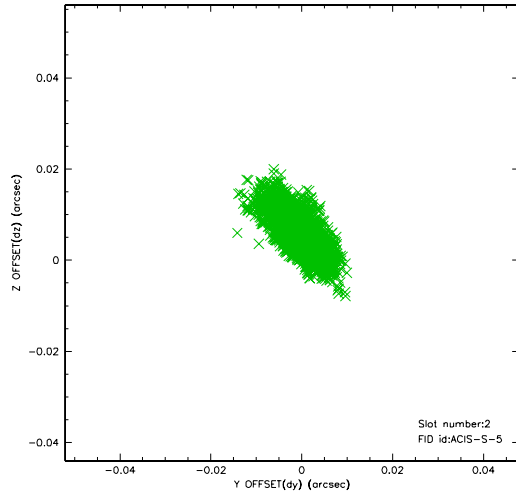
### 2.5.1 Slot 0



## 2.5.2 Slot 1



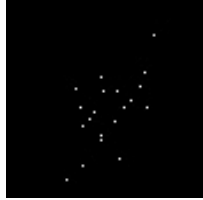
### 2.5.3 Slot 2





### 3 Point Sources

6.54 arcmin



## A Summary

### A.1 Status

V&V Scientist	Jen Lauer
V&V Date (YYYY-MM-DD)	2006.05.31
V&V Edition	1
V&V Disposition and Status	OK
V&V Charge Time	9.605

### A.2 Comments