

# V&V Reference Report

## L2 ASCDS Version : 8.4.5

Observation 4744 - L2 Version 3  
Chandra X-Ray Center

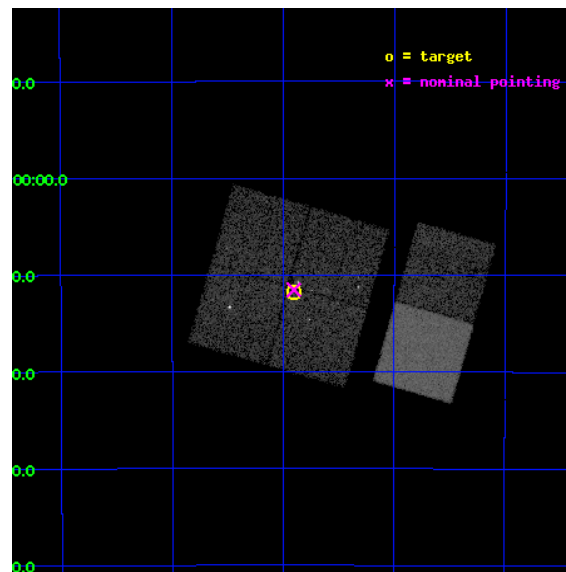
L2 Processing Date : Dec 3 2012

## Contents

<b>1</b>	<b>Front</b>	<b>2</b>
<b>2</b>	<b>OBI</b>	<b>3</b>
2.1	OBI . . . . .	3
2.1.1	Images . . . . .	3
2.1.2	Bias . . . . .	3
2.1.3	Parameters . . . . .	4
2.1.4	Events . . . . .	4
2.2	Compared Parameters . . . . .	5
2.3	Aspect . . . . .	6
2.4	Star Slots . . . . .	9
2.4.1	Slot 3 . . . . .	9
2.4.2	Slot 4 . . . . .	10
2.4.3	Slot 5 . . . . .	11
2.4.4	Slot 6 . . . . .	12
2.4.5	Slot 7 . . . . .	13
2.5	FID Slots . . . . .	14
2.5.1	Slot 0 . . . . .	14
2.5.2	Slot 1 . . . . .	15
2.5.3	Slot 2 . . . . .	16
<b>A</b>	<b>Summary</b>	<b>17</b>
A.1	Status . . . . .	17
A.2	Comments . . . . .	17

# 1 Front

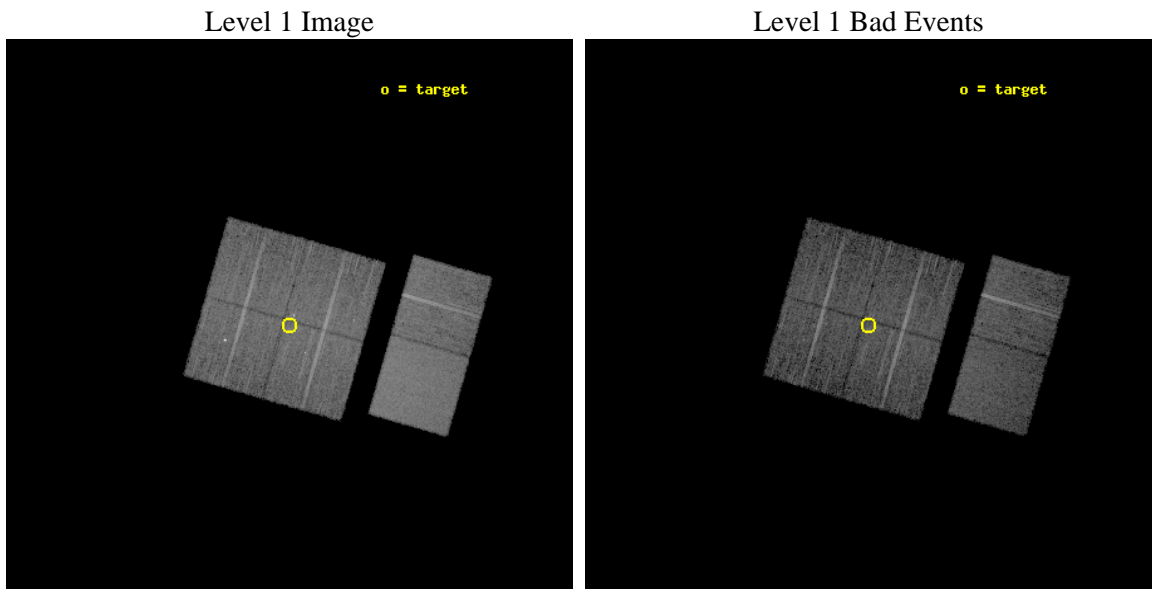
seq_num	600399	Sequence number
obs_id	4744	Observation id
title	The discrete X-ray source populations in an age sequence of nearby starburst galaxies	Proposal title
observer	Dr Andreas Zezas	Principal investigator
object	NGC55	Source name
dtcycle	0	&#160
cycle	P	events from which exps? Prim/Second/Both
ra_targ	3.725	Observer's specified target RA [deg]
dec_targ	-39.196944	Observer's specified target Dec [deg]
ra_nom	3.7257075075907	Nominal RA [deg]
dec_nom	-39.192322901716	Nominal Dec [deg]
roll_nom	105.99102581677	Nominal Roll [deg]
revision	3	Processing version of data
ontime	9688.2660142779	Sum of GTIs [s]
livetime	9565.5873564317	Livetime [s]
ontime0	9688.1428942978	Sum of GTIs [s]
ontime1	9688.1839342713	Sum of GTIs [s]
ontime2	9688.2249742746	Sum of GTIs [s]
ontime3	9688.2660142779	Sum of GTIs [s]
ontime6	9688.3480942845	Sum of GTIs [s]
ontime7	9688.3070542812	Sum of GTIs [s]
l2events	81835	Number of level 2 events



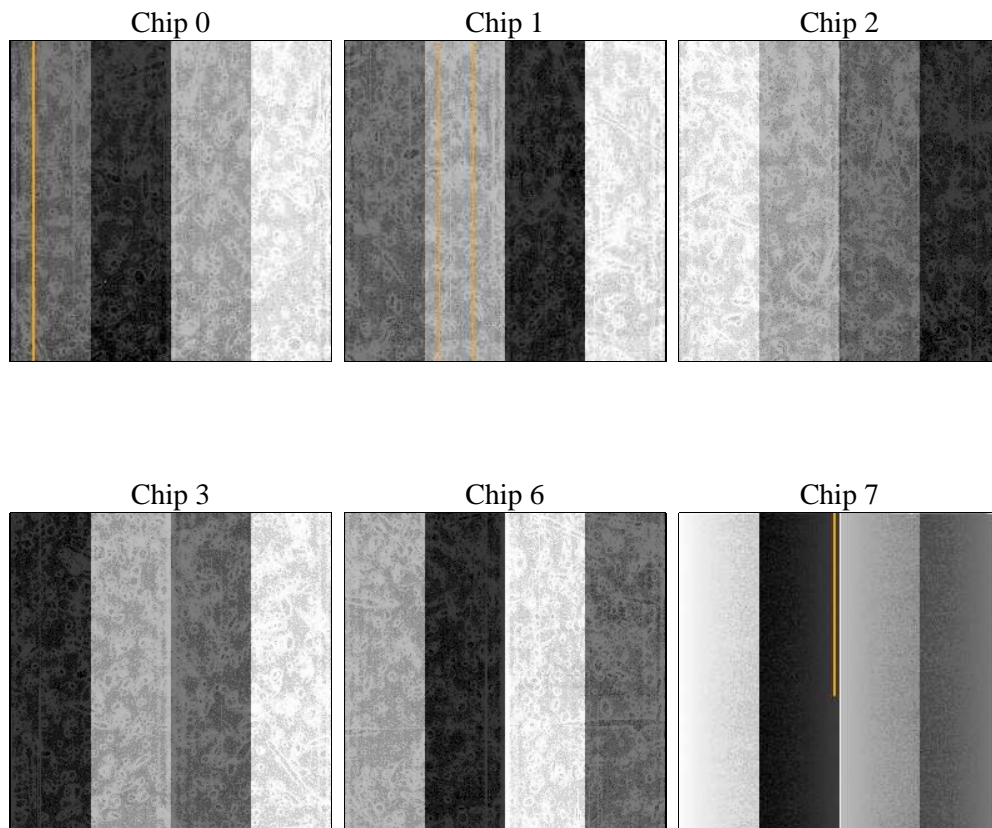
## 2 OBI

### 2.1 OBI

#### 2.1.1 Images



#### 2.1.2 Bias



### 2.1.3 Parameters

obi_num	0	Obi number	sched_exp_time	9692.000000	[s] Scheduled observation exposure time
ascdsver	8.4.5	Processing system revision	ontime	9688.2660142779	Sum of GTIs [s]
caldsver	4.5.2	&#160	ontime0	9688.1428942978	Sum of GTIs [s]
date	2012-12-03T05:23:12	Date and time of file creation	ontime1	9688.1839342713	Sum of GTIs [s]
revision	3	Processing version of data	ontime2	9688.2249742746	Sum of GTIs [s]
			ontime3	9688.2660142779	Sum of GTIs [s]
			ontime6	9688.3480942845	Sum of GTIs [s]
			ontime7	9688.3070542812	Sum of GTIs [s]
			l1events	450041	Number of level 1 events

### 2.1.4 Events

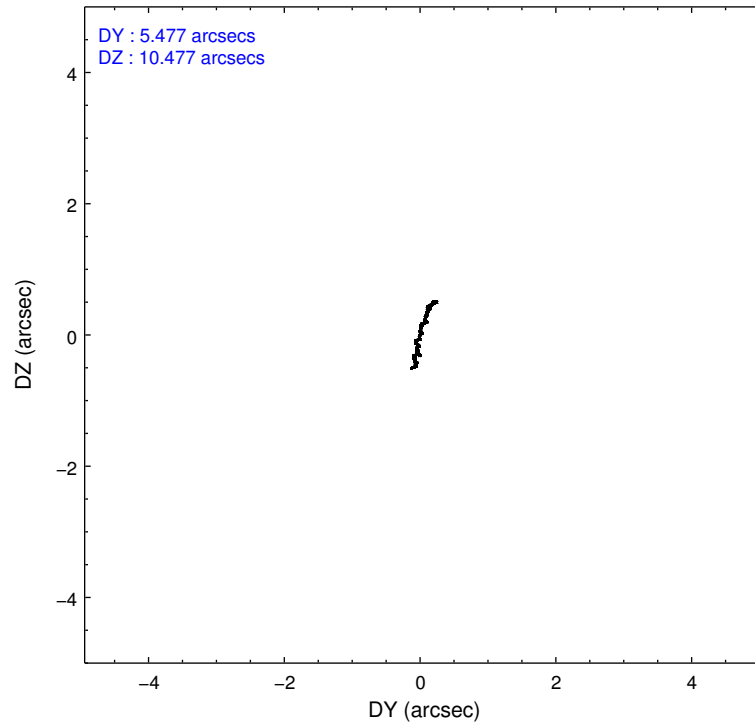
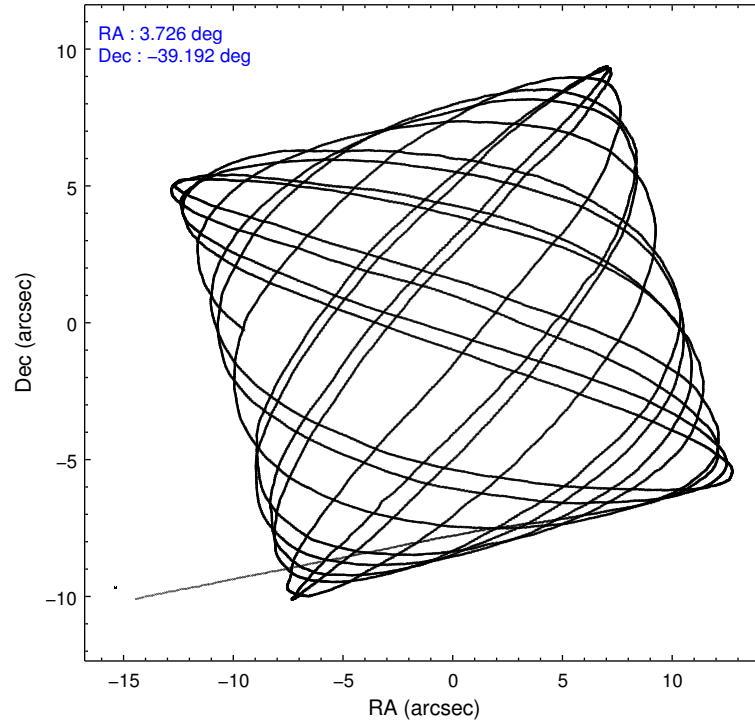
	ccd 0	ccd 1	ccd 2	ccd 3	ccd 6	ccd 7		ccd 0	ccd 1	ccd 2	ccd 3	ccd 6	ccd 7
level 1 events	65923	69109	73450	71391	73839	96329	grade 0 events	3676	6829	4765	4114	3349	3626
rejected events	57394	56158	63720	62349	65204	56287		5%	9%	6%	5%	4%	3%
rejected %	87%	81%	86%	87%	88%	58%	grade 1 events	42	109	56	53	32	98
								0%	0%	0%	0%	0%	0%
							grade 2 events	1775	2298	1850	1770	1840	8023
								2%	3%	2%	2%	2%	8%
							grade 3 events	788	987	827	823	799	3424
								1%	1%	1%	1%	1%	3%
							grade 4 events	799	992	865	841	808	3500
								1%	1%	1%	1%	1%	3%
							grade 5 events	2952	3106	2746	3190	3374	9460
								4%	4%	3%	4%	4%	9%
							grade 6 events	1494	1853	1429	1502	1842	21495
								2%	2%	1%	2%	2%	22%
							grade 7 events	54397	52935	60912	59098	61795	46703
								82%	76%	82%	82%	83%	48%

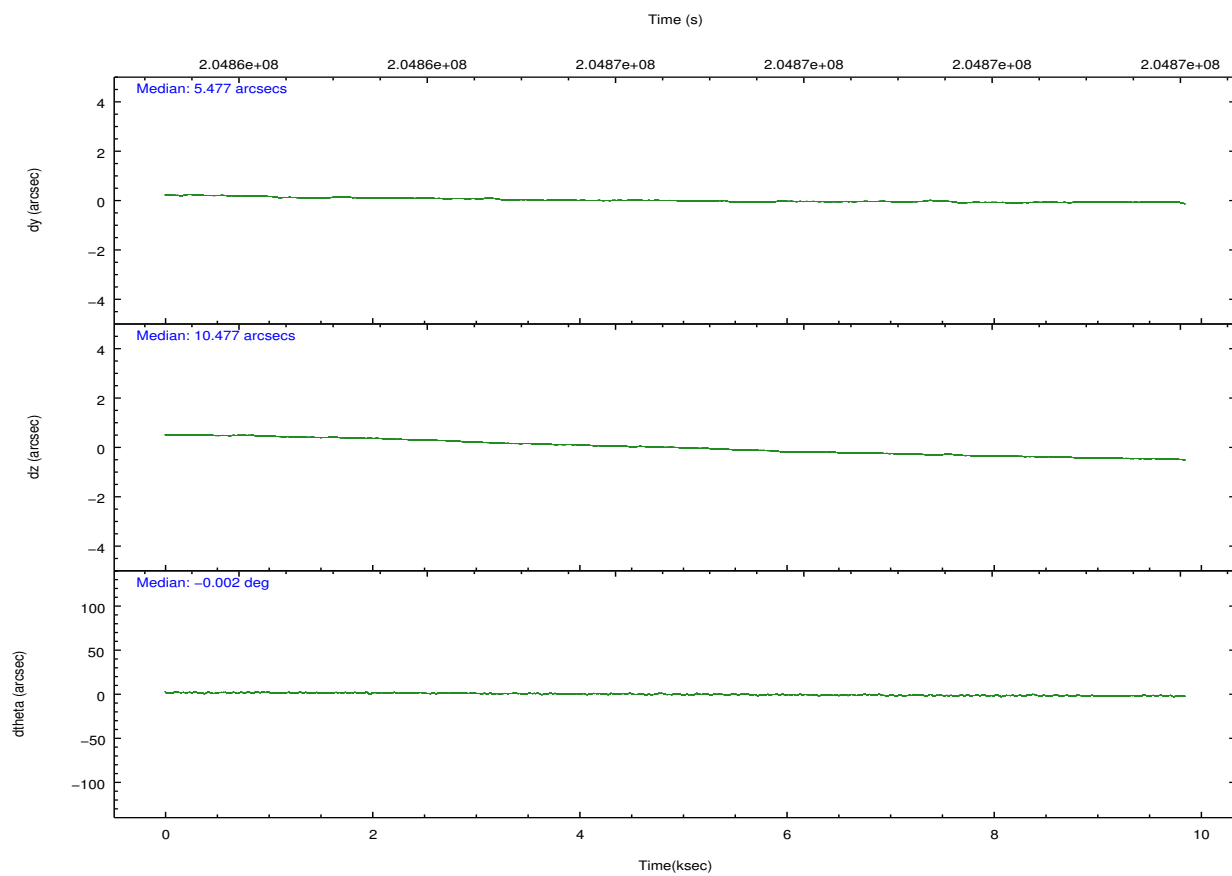
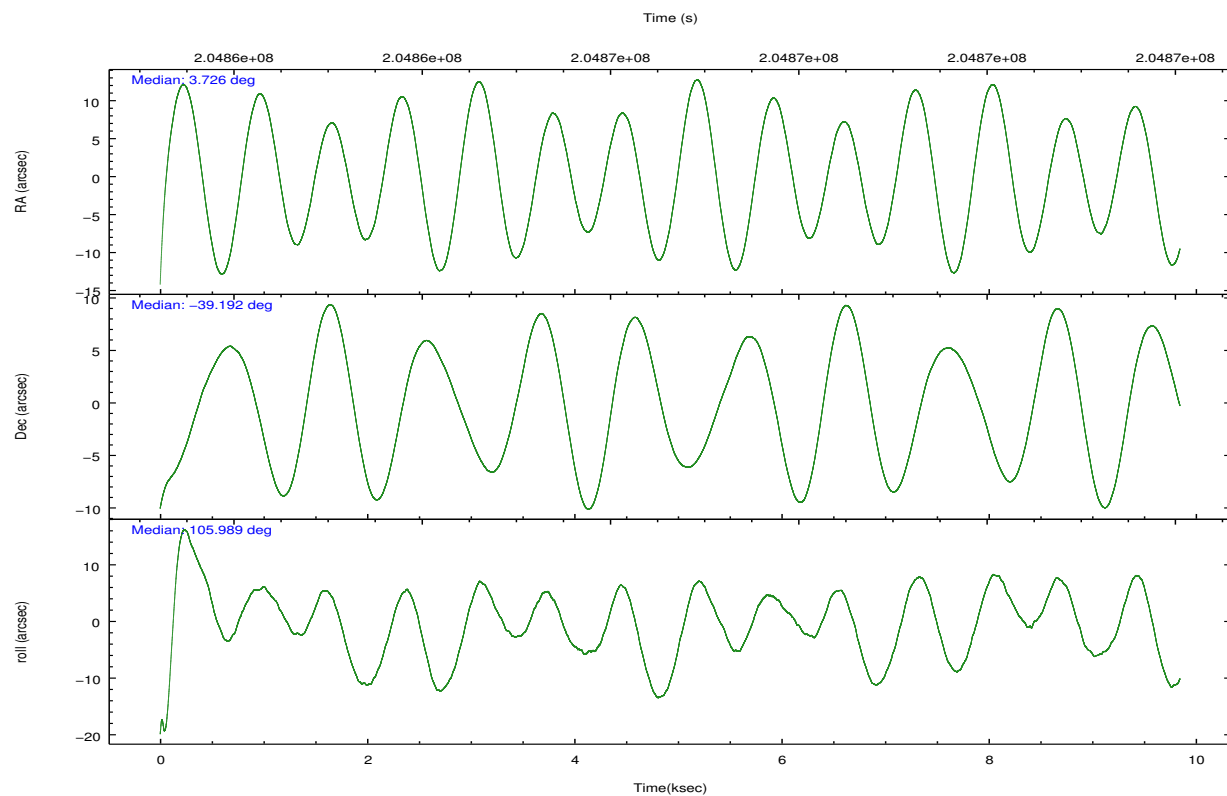


## 2.2 Compared Parameters

Parameter	Planned	Actual	Parameter	Planned	Actual
Instrument	ACIS	ACIS	Obspar format version number	7	7
Detector	ACIS-012367	ACIS-012367	Obspar file type	PREDICTED	ACTUAL
Grating	NONE	NONE	Obspar update status	NONE	UPDATED
Data mode	FAINT	FAINT	Number of optional ACIS chips dropped	0	0
Observation mode	POINTING	POINTING	On-chip summing requested	N	N
[deg] Pointing RA	3.751240	3.72570750759072	Subarray requested	NONE	NONE
[deg] Pointing Dec	-39.211279	-39.19232290171561	Alternating exposures requested	N	N
[deg] Pointing Roll	105.798463	105.9910258167679	[s] Primary exposure time	0.000000	3.2
[mm] SIM focus pos	-0.782348	-0.7809083437167272			
[mm] SIM defocus	0	0.001439871863259334			
[mm] SIM translation stage pos	-233.592463	-233.5874344608287			
[mm] SIM translation stage offset	0	-0.005018542100998502			
[s] Observation start time (MET)	204861861.184000	204860881.50657			
Observation start date	2004-06-29T02:03:17	2004-06-29T01:48:01			
[s] Observation end time (MET)	204871553.184000	204873424.43213			
Observation end date	2004-06-29T04:44:49	2004-06-29T05:17:04			
Read mode	TIMED	TIMED			

## 2.3 Aspect



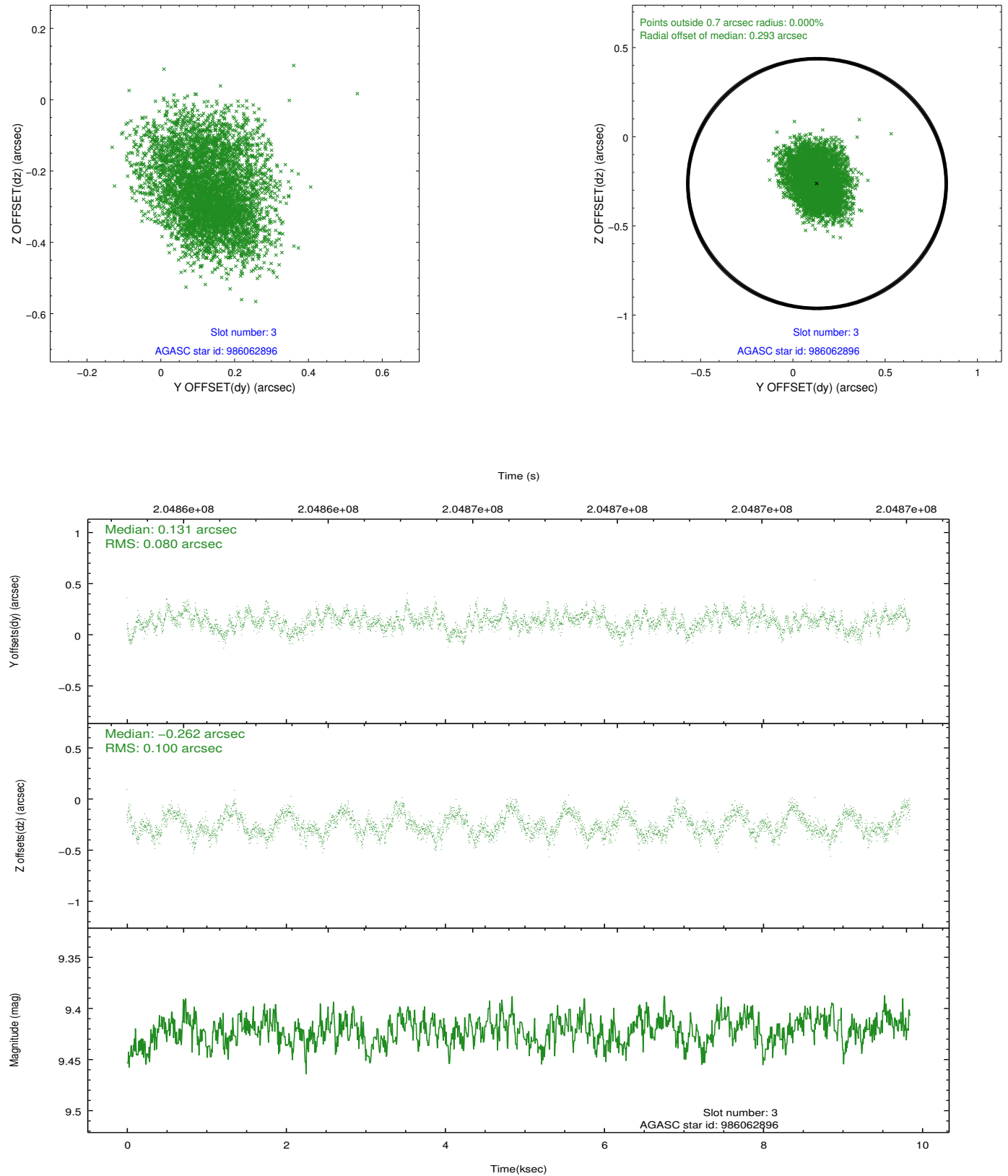


### Slot Statistics

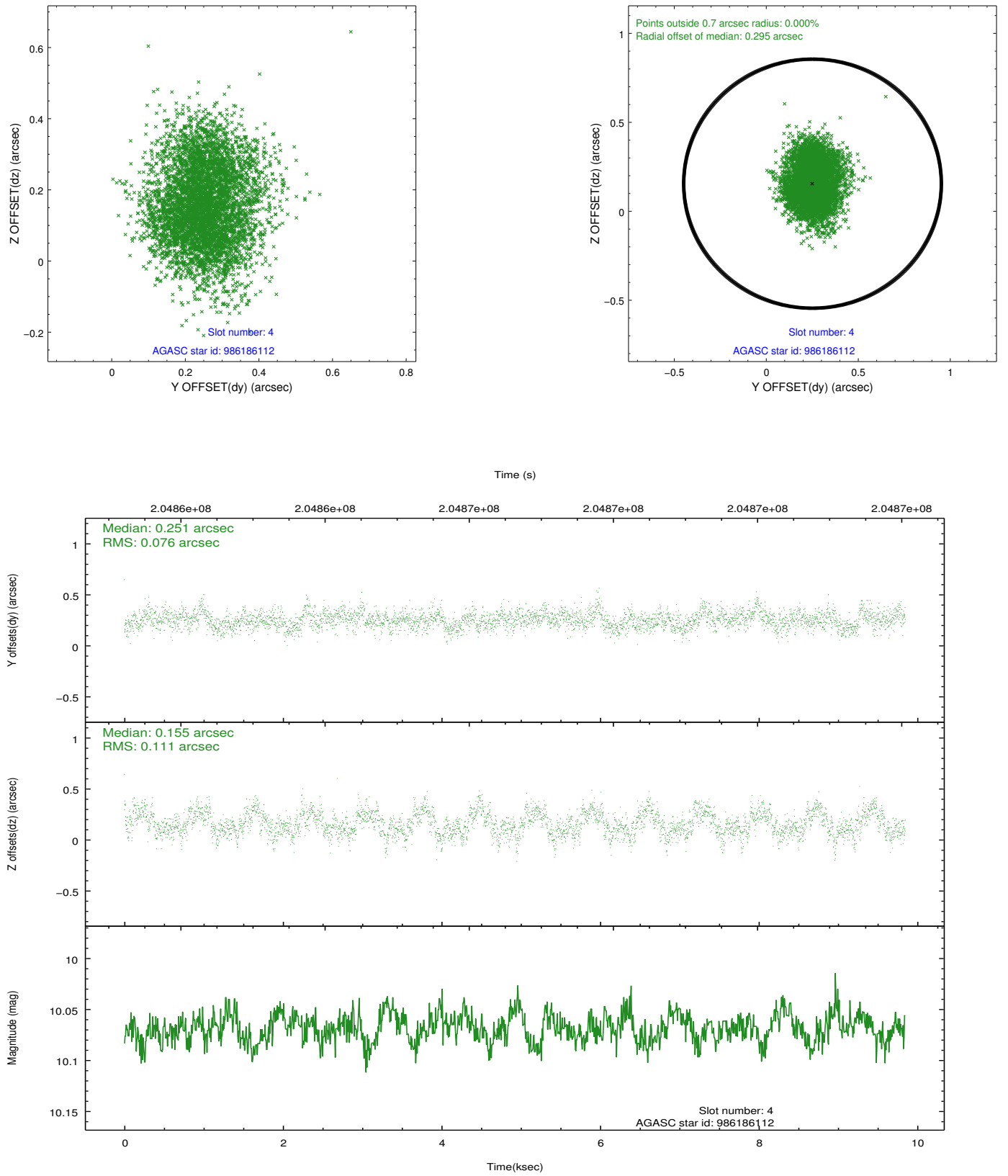
slot	status	id	mag	n_pts	med_dy	med_dz	dr1	dr2	ra	dec	mean_y	mean_z
0	FID	ACIS-I-1	7.24	2402	0.023	0.001	0.017	0.025	0.000000	0.000000	934.24	-833.97
1	FID	ACIS-I-5	7.23	2401	-0.169	0.040	0.010	0.014	0.000000	0.000000	-1813.75	1063.31
2	FID	ACIS-I-6	7.25	2402	0.055	0.028	0.012	0.018	0.000000	0.000000	399.25	1708.40
3	GUIDE	986062896	9.42	4800	0.131	-0.262	0.140	0.220	3.098710	-39.608867	-890.66	2132.47
4	GUIDE	986186112	10.07	4800	0.251	0.155	0.144	0.229	4.129797	-39.348756	-765.06	-877.92
5	GUIDE	986186168	9.99	4780	-0.027	0.137	0.126	0.212	4.318921	-39.027908	198.24	-1705.87
6	GUIDE	986186240	9.36	4802	0.196	0.240	0.139	0.207	4.166509	-39.491915	-1288.38	-834.37
7	GUIDE	986059312	10.15	4799	-0.545	-0.283	0.182	0.286	3.033746	-38.695256	2328.00	1436.56

## 2.4 Star Slots

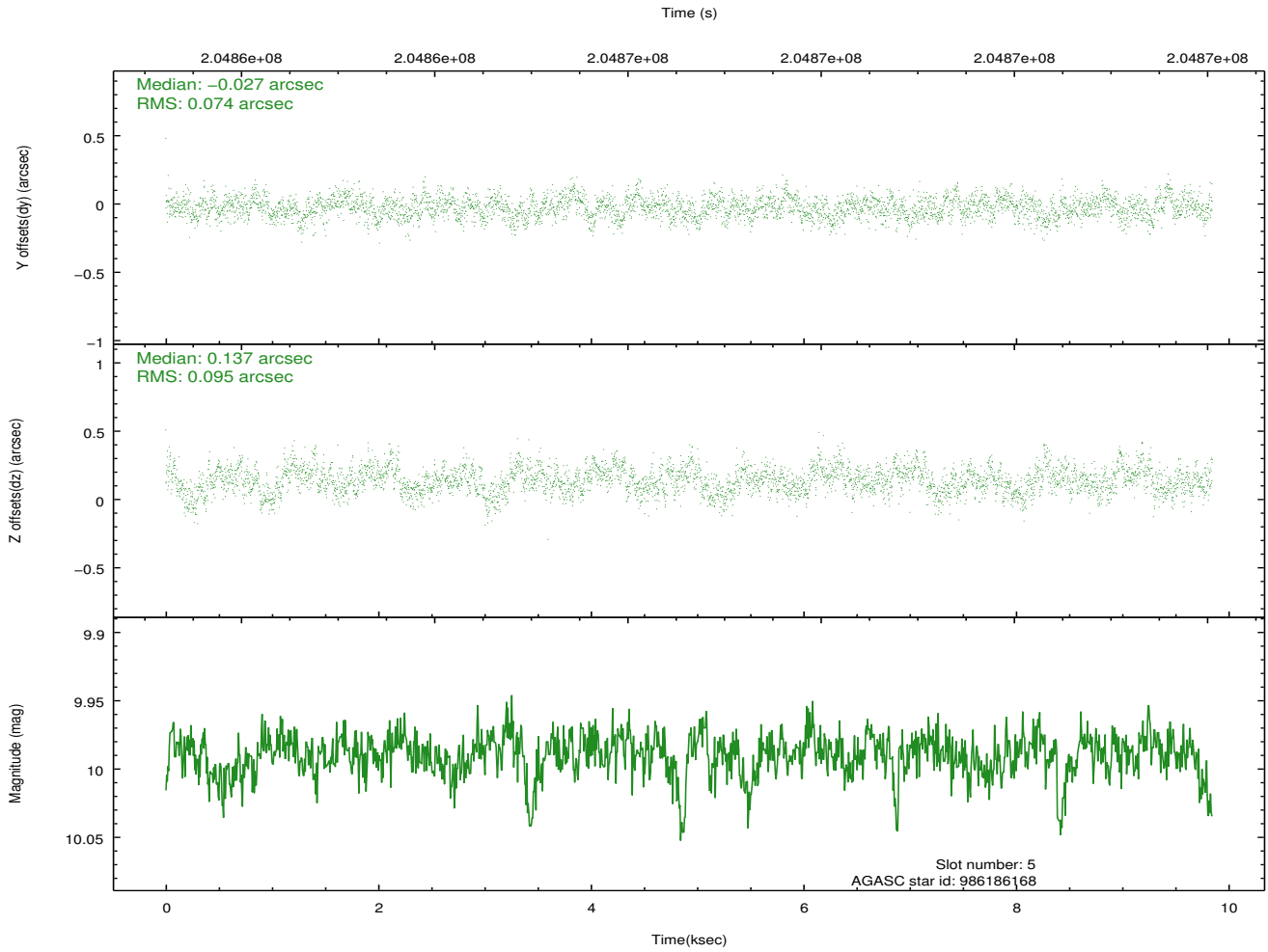
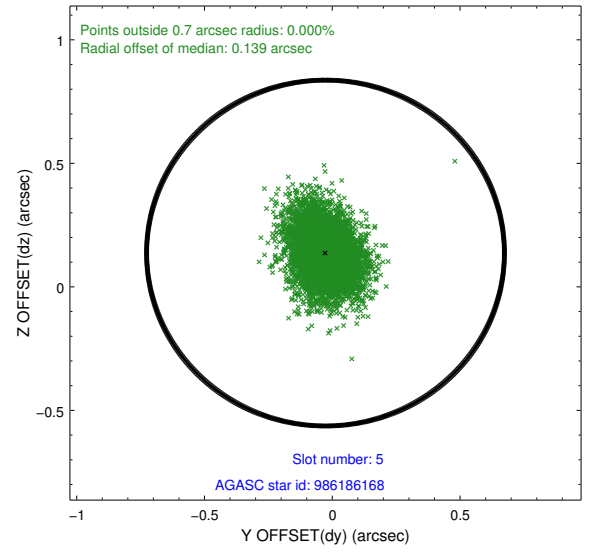
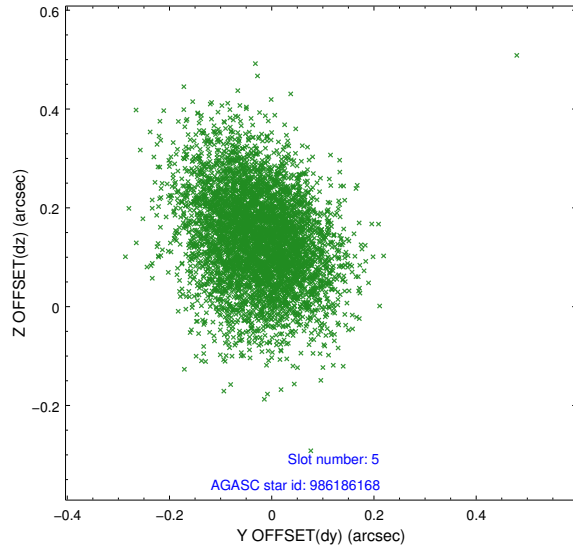
### 2.4.1 Slot 3



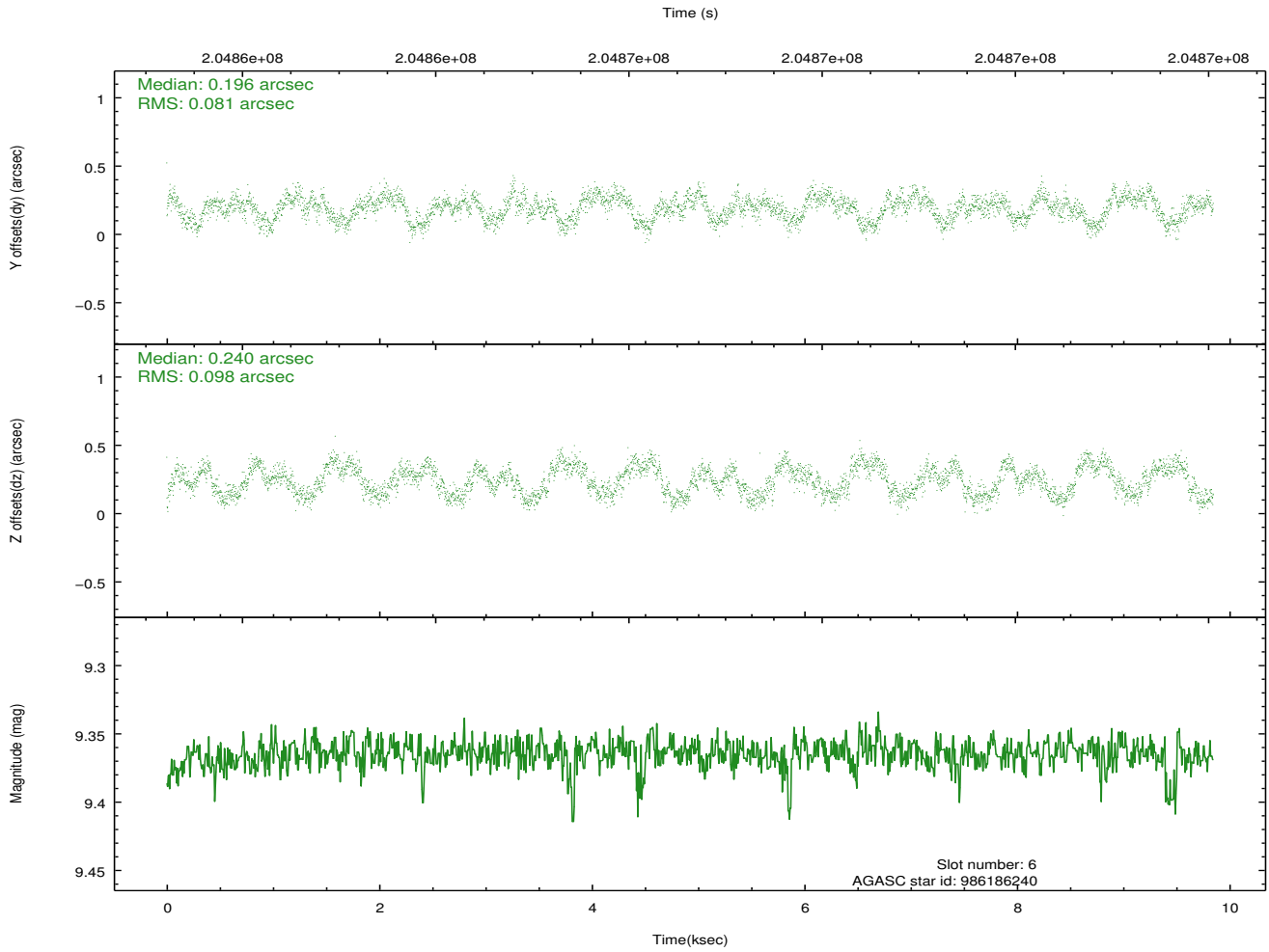
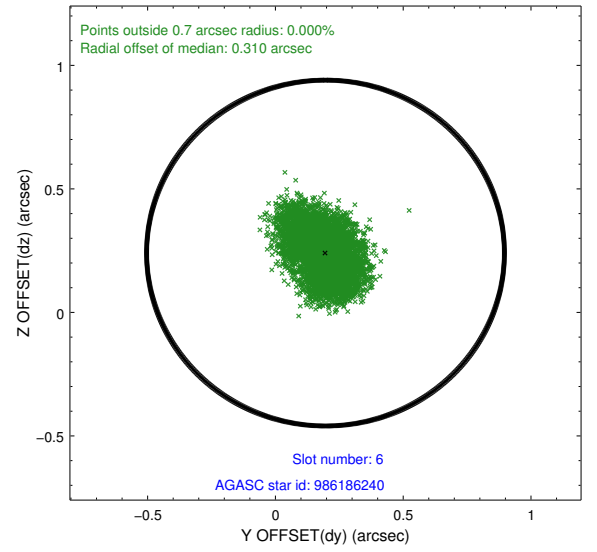
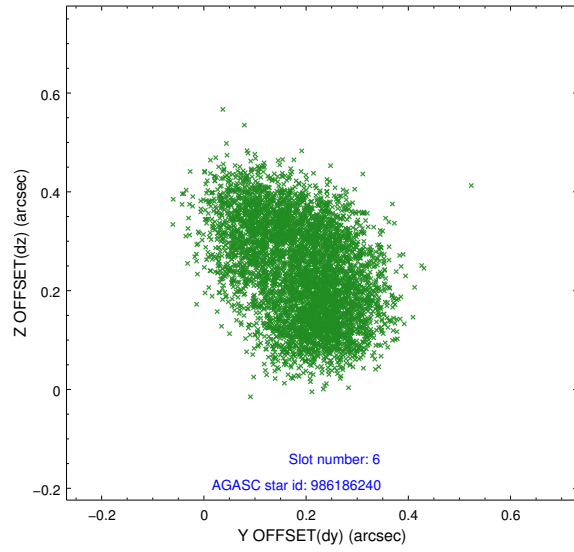
## 2.4.2 Slot 4



### 2.4.3 Slot 5

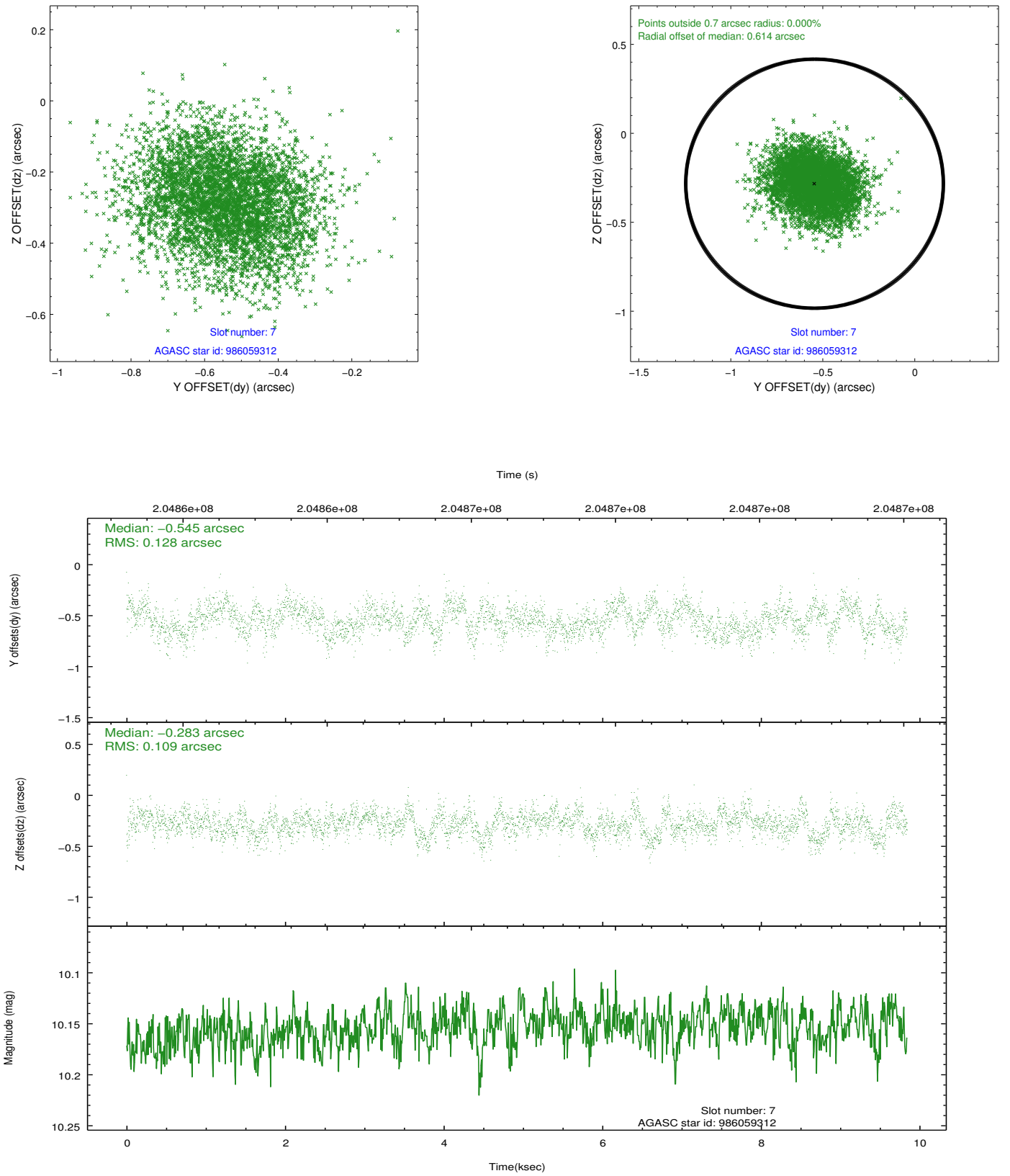


## 2.4.4 Slot 6



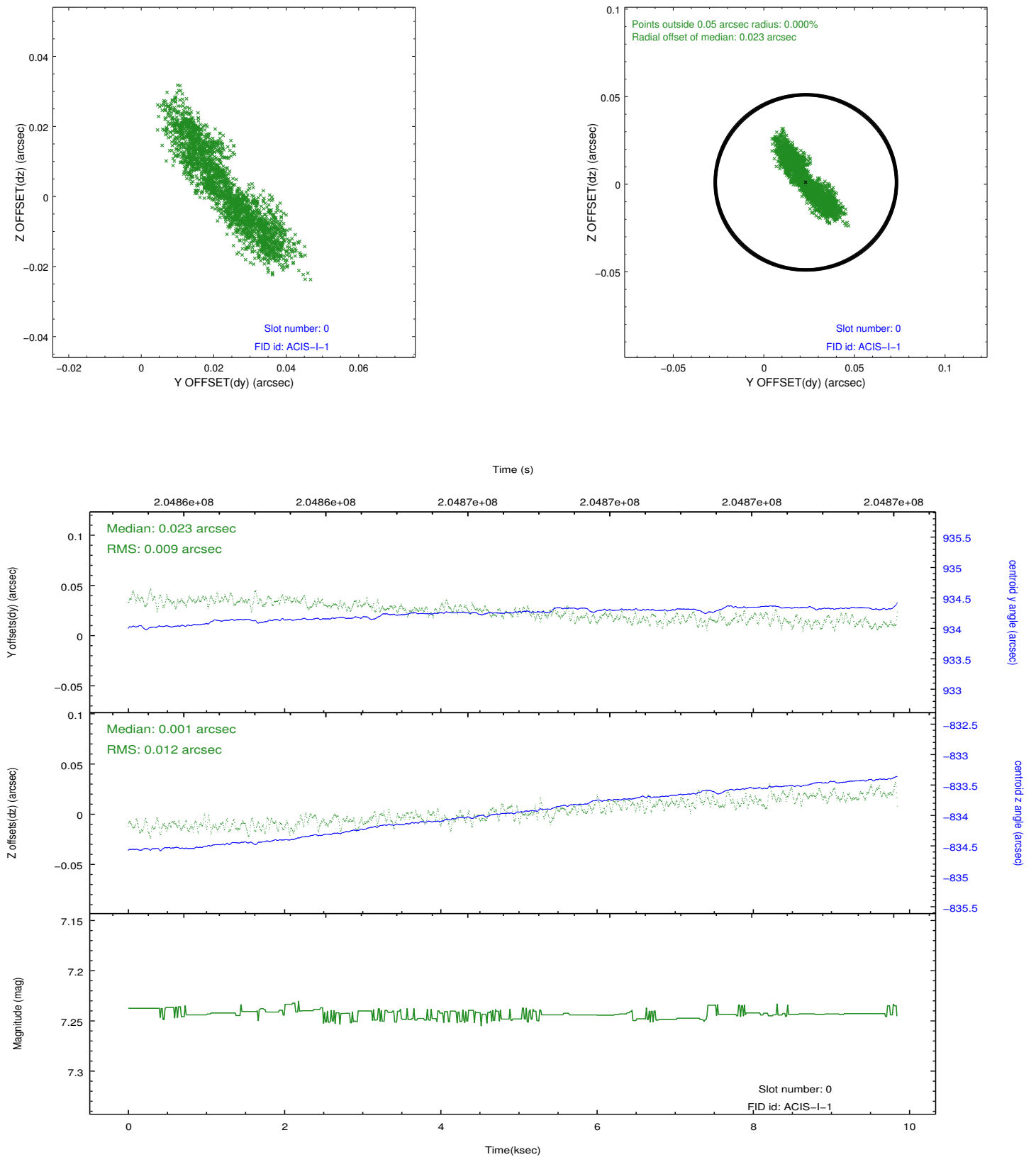


## 2.4.5 Slot 7

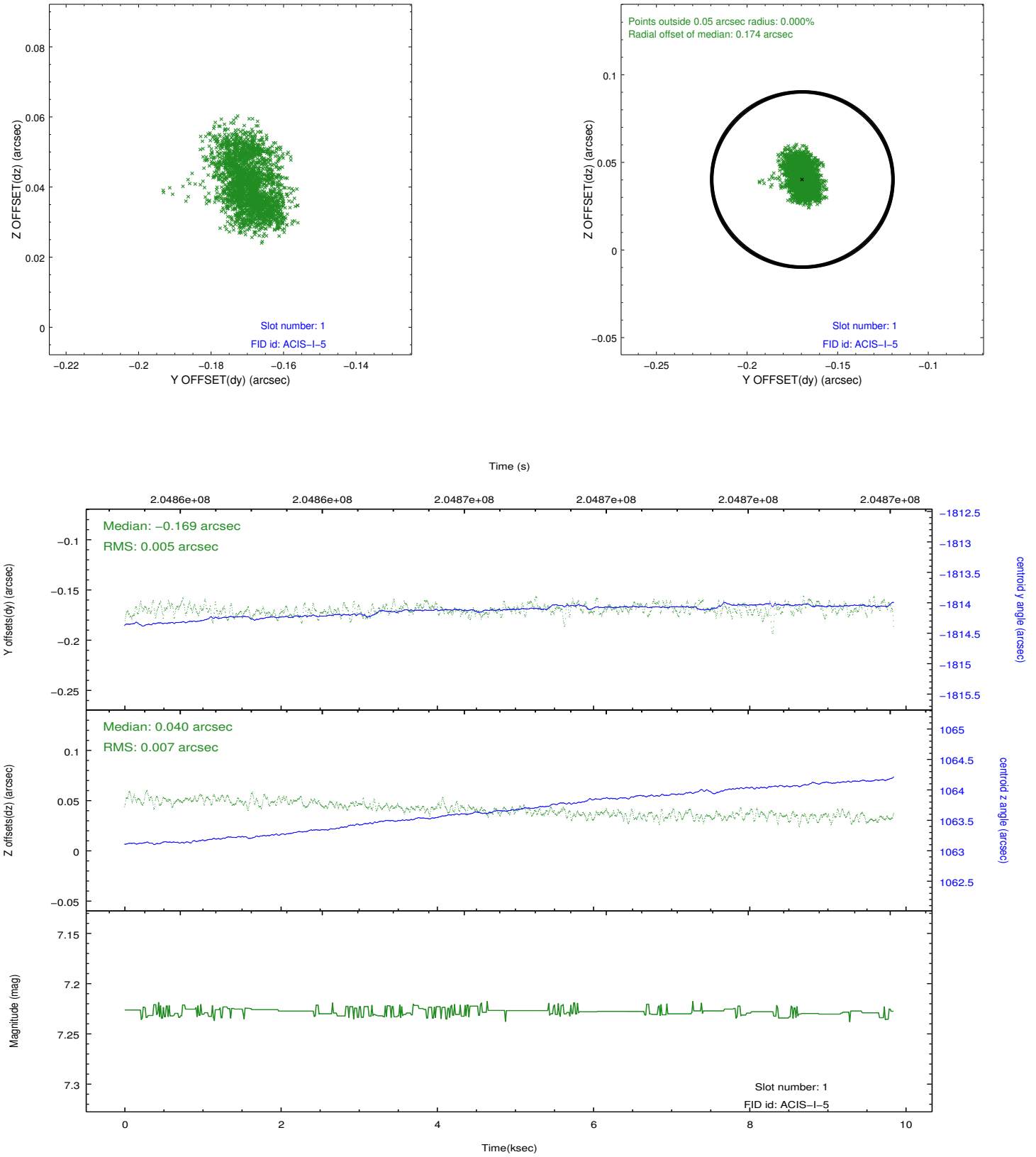


## 2.5 FID Slots

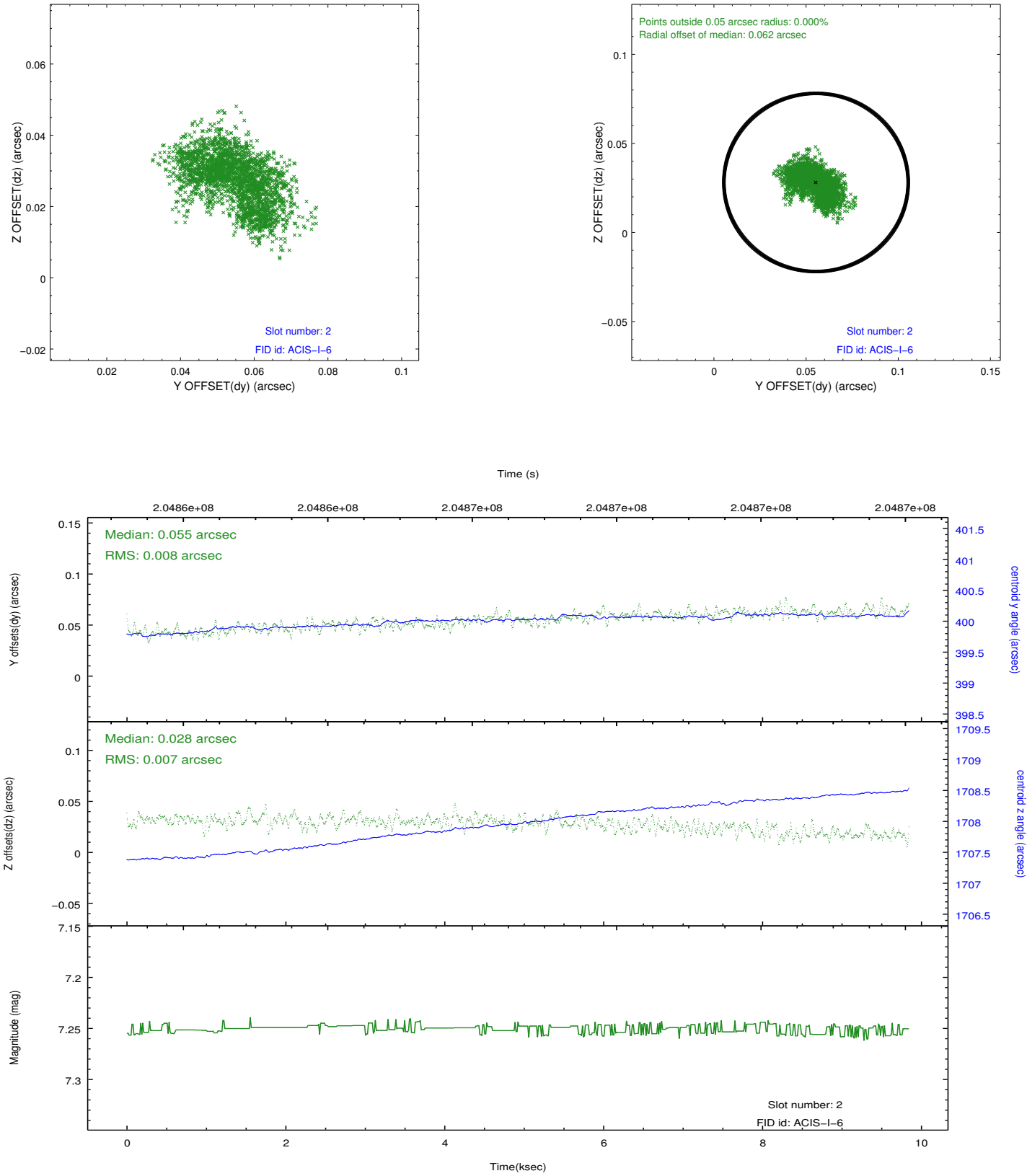
### 2.5.1 Slot 0



## 2.5.2 Slot 1



### 2.5.3 Slot 2



## A Summary

### A.1 Status

V&V Scientist	Jen Lauer
V&V Date (YYYY-MM-DD)	2012.12.18
V&V Edition	1
V&V Disposition and Status	OK
V&V Charge Time	9.689

### A.2 Comments