

V&V Reference Report

L2 ASCDS Version : 7.6.7.2

Observation 4744 - L2 Version 001
Chandra X-Ray Center

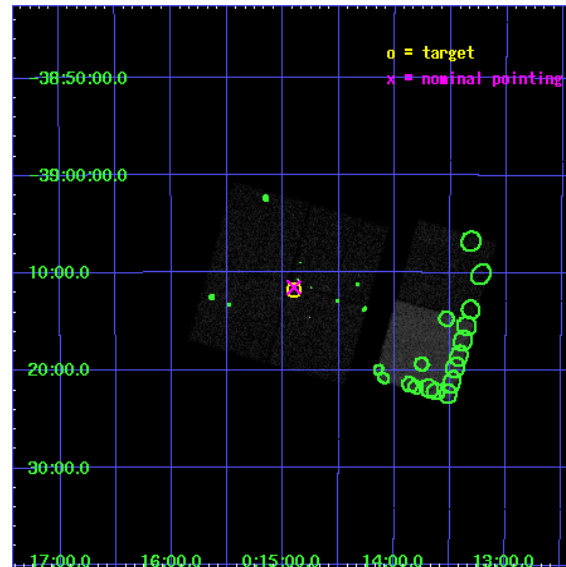
L2 Processing Date : May 23 2006

Contents

1	Front	2
2	OBI	3
2.1	OBI	3
2.1.1	Images	3
2.1.2	Bias	3
2.1.3	Parameters	4
2.1.4	Events	4
2.2	Compared Parameters	5
2.3	Aspect	6
2.4	Star Slots	9
2.4.1	Slot 3	9
2.4.2	Slot 4	10
2.4.3	Slot 5	11
2.4.4	Slot 6	12
2.4.5	Slot 7	13
2.5	FID Slots	14
2.5.1	Slot 0	14
2.5.2	Slot 1	15
2.5.3	Slot 2	16
3	Point Sources	17
A	Summary	18
A.1	Status	18
A.2	Comments	18

1 Front

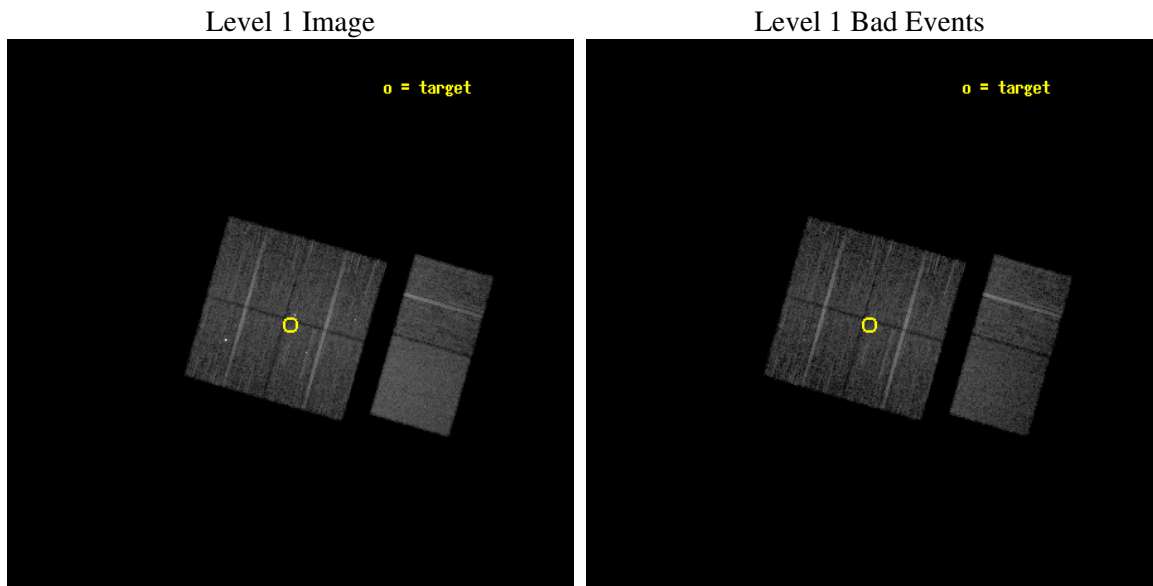
seq_num	600399
obs_id	4744
title	The discrete X-ray source populations in an age sequence of nearby starburst galaxies
observer	Dr. Andreas Zezas
object	NGC55
dtcycle	0
cycle	P
ra_targ	3.725
dec_targ	-39.196944
ra_nom	3.7257172633113
dec_nom	-39.192349652877
roll_nom	105.99103197074
revision	2
ontime	9689.5999639034
livetime	9566.9044147838
ontime0	9689.5999639034
ontime1	9689.5999639034
ontime2	9689.5999639034
ontime3	9689.5999639034
ontime6	9689.5999639034
ontime7	9689.5999639034
l2events	78977



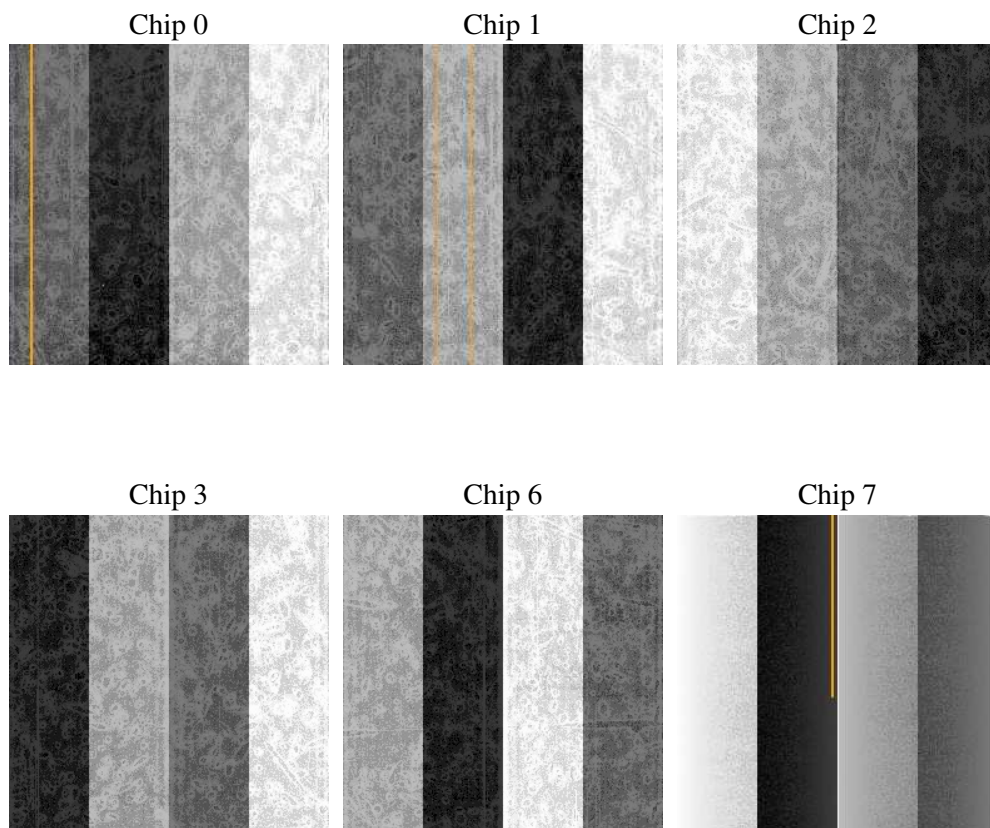
2 OBI

2.1 OBI

2.1.1 Images



2.1.2 Bias



2.1.3 Parameters

obi_num	0
ascdsver	7.6.7.2
caldbver	3.2.2
date	2006-05-23T21:04:45
revision	2

sched_exp_time	9692.000000
ontime	9693.8361897171
ontime0	9693.8361698389
ontime1	9693.8361698389
ontime2	9693.8361897171
ontime3	9693.8361897171
ontime6	9693.8361698389
ontime7	9693.8361897171
l1events	450041

2.1.4 Events

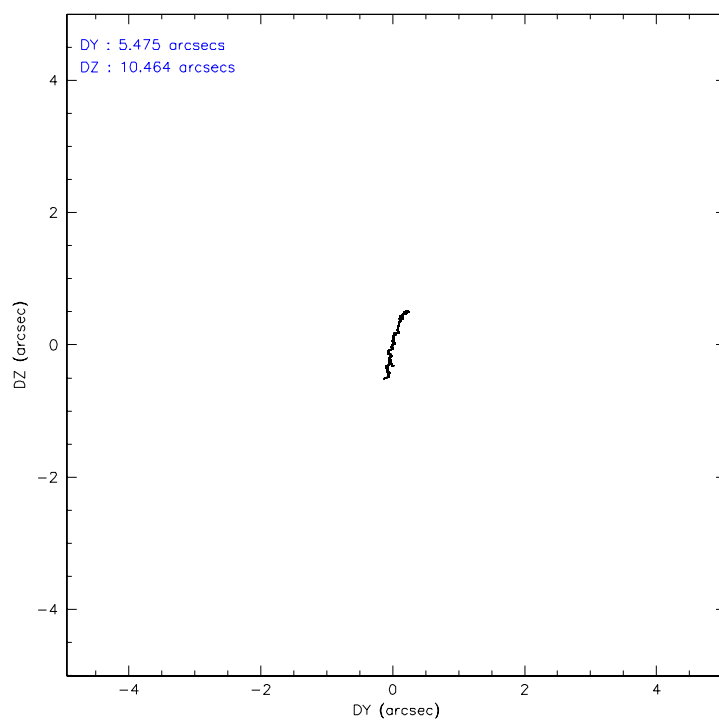
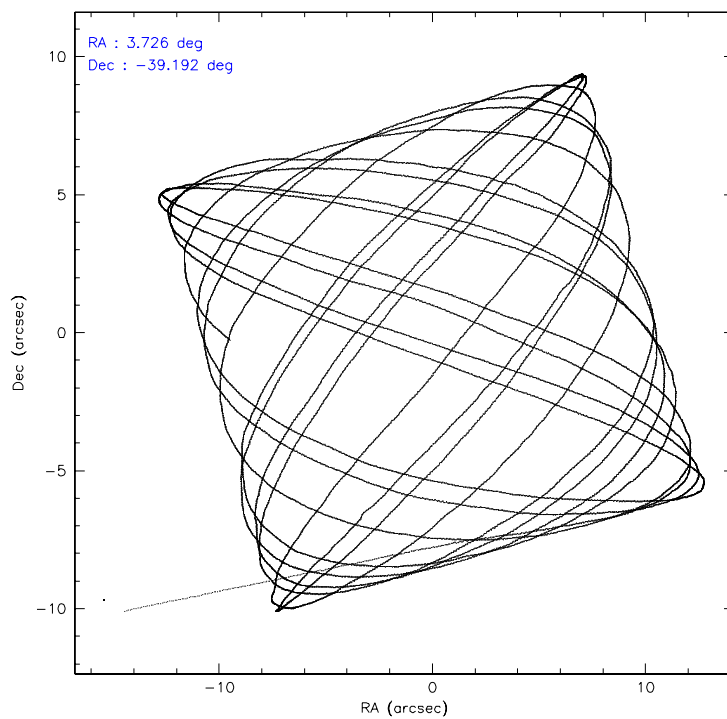
	ccd 0	ccd 1	ccd 2	ccd 3	ccd 6	ccd 7
level 1 events	65923	69109	73450	71391	73839	96329
rejected events	57392	56154	63716	62344	65202	59269
rejected %	87%	81%	86%	87%	88%	61%

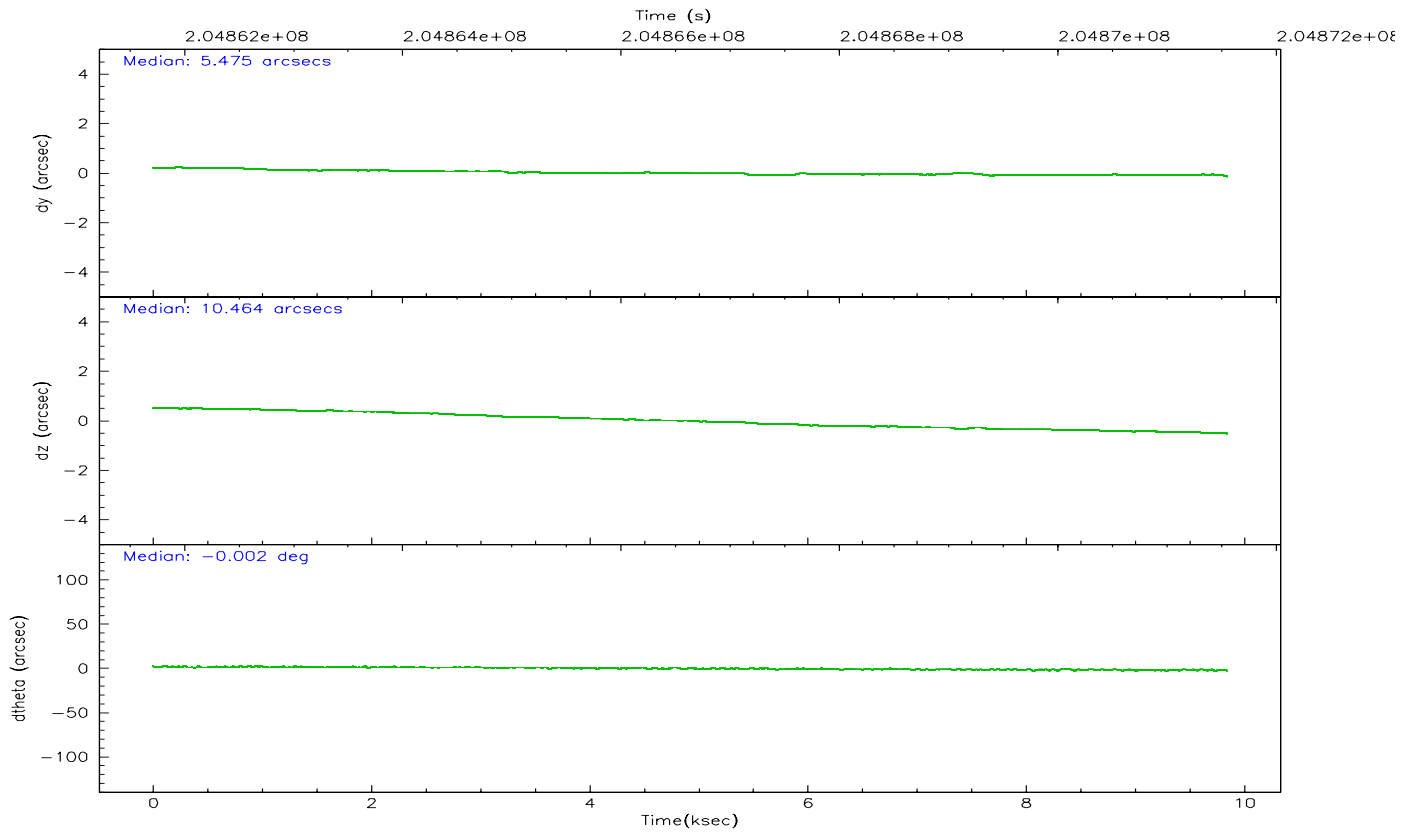
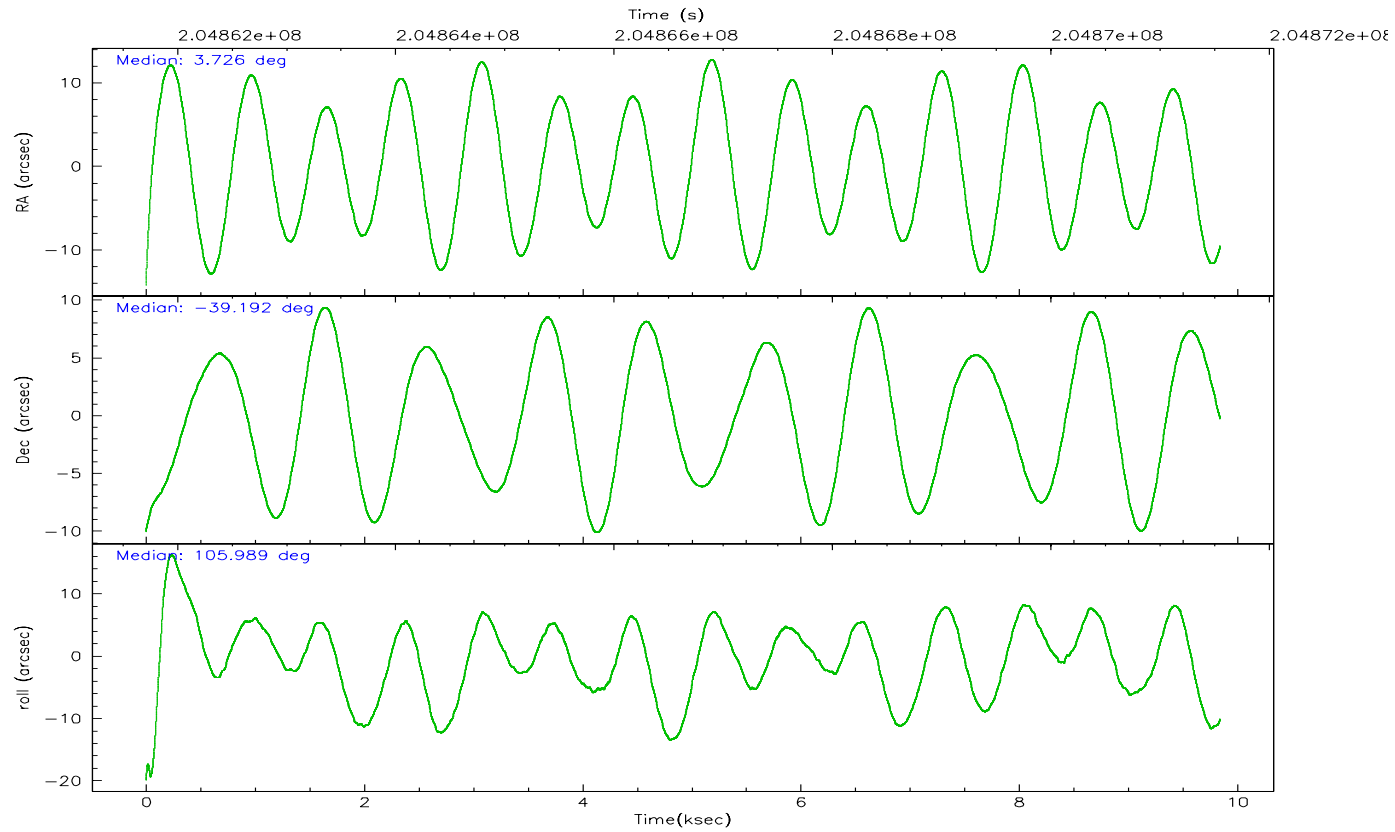
	ccd 0	ccd 1	ccd 2	ccd 3	ccd 6	ccd 7
grade 0 events	3676	6829	4765	4114	3350	2071
	5%	9%	6%	5%	4%	2%
grade 1 events	42	109	56	53	32	61
	0%	0%	0%	0%	0%	0%
grade 2 events	1775	2298	1850	1770	1839	9259
	2%	3%	2%	2%	2%	9%
grade 3 events	788	987	827	823	799	1795
	1%	1%	1%	1%	1%	1%
grade 4 events	799	992	865	841	808	1880
	1%	1%	1%	1%	1%	1%
grade 5 events	2952	3106	2746	3191	3374	6635
	4%	4%	3%	4%	4%	6%
grade 6 events	1494	1853	1429	1501	1842	22065
	2%	2%	1%	2%	2%	22%
grade 7 events	54397	52935	60912	59098	61795	52563
	82%	76%	82%	82%	83%	54%

2.2 Compared Parameters

Parameter	Planned	Actual	Parameter	Planned	Actual
Instrument	ACIS	ACIS	Obspar format version number	6	6
Detector	ACIS-012367	ACIS-012367	Obspar file type	PREDICTED	ACTUAL
Grating	NONE	NONE	Obspar update status	NONE	UPDATED
Data mode	FAINT	FAINT	On-chip summing requested	N	N
Observation mode	POINTING	POINTING	Subarray requested	NONE	NONE
Pointing RA	3.751240	3.725717263311262	Alternating exposures requested	N	N
Pointing Dec	-39.211279	-39.19234965287651	Primary exposure time	0.000000	3.2
Pointing Roll	105.798463	105.9910319707441			
SIM focus pos (mm)	-0.782348	-0.7809083437167272			
SIM defocus (mm)	0	0.001439871863259334			
SIM translation stage pos (mm)	-233.592463	-233.5874344608287			
SIM translation stage offset (mm)	0	-0.005018542100998502			
Observation start time	204861861.184000	204860881.50657			
Observation start date	2004-06-29T02:03:17	2004-06-29T01:48:01			
Observation end time	204871553.184000	204873424.43213			
Observation end date	2004-06-29T04:44:49	2004-06-29T05:17:04			
Read mode	TIMED	TIMED			

2.3 Aspect



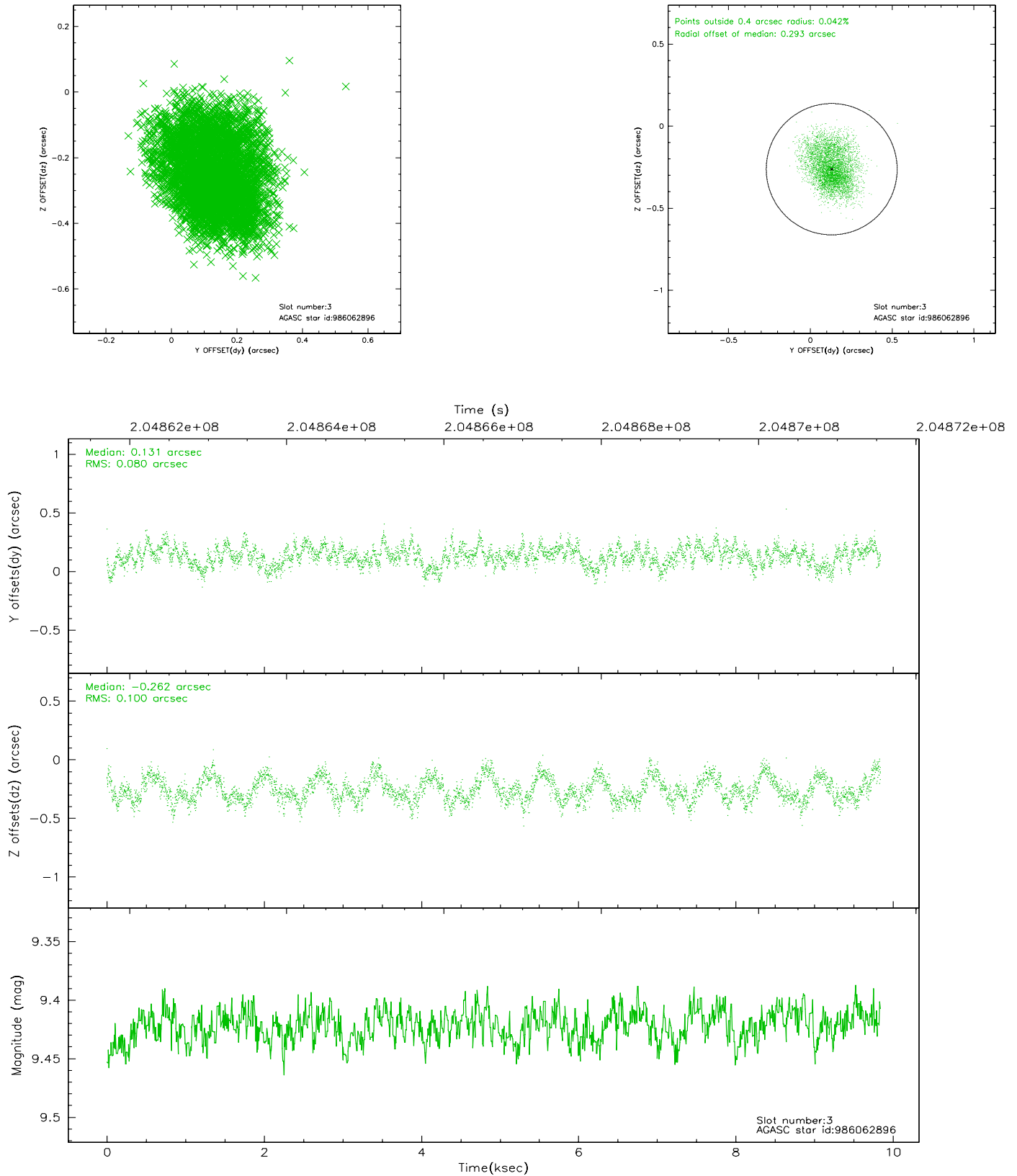


Slot Statistics

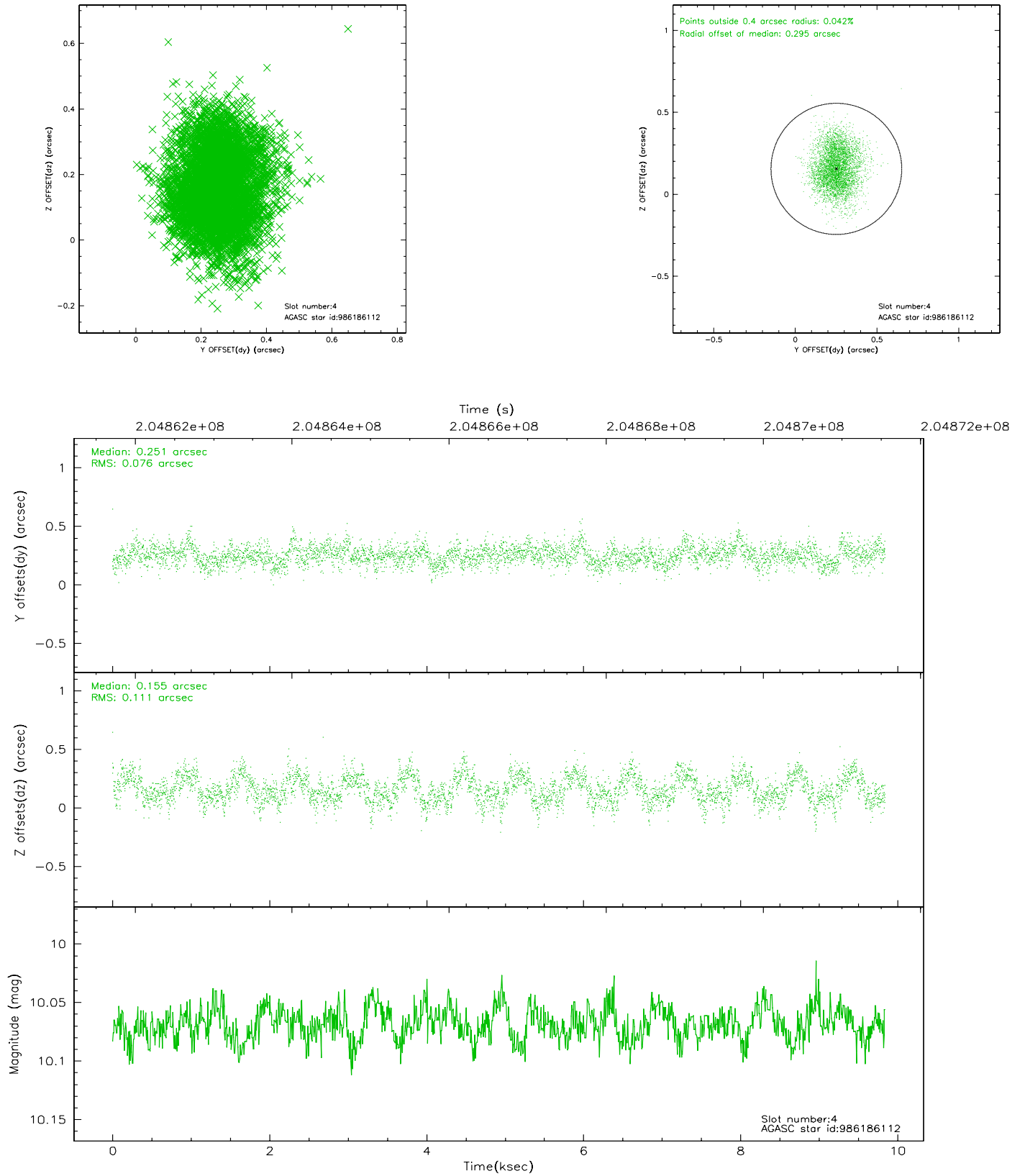
slot	status	id	mag	n_pts	med_dy	med_dz	dr1	dr2	ra	dec	mean_y	mean_z
0	FID	ACIS-I-1	7.24	2402	0.003	0.028	0.016	0.024	0.000000	0.000000	934.22	-833.93
1	FID	ACIS-I-5	7.23	2401	-0.139	0.033	0.009	0.014	0.000000	0.000000	-1813.71	1063.32
2	FID	ACIS-I-6	7.25	2402	0.045	0.009	0.012	0.018	0.000000	0.000000	399.24	1708.39
3	GUIDE	986062896	9.42	4800	0.131	-0.262	0.140	0.220	3.098710	-39.608867	-890.66	2132.47
4	GUIDE	986186112	10.07	4800	0.251	0.155	0.144	0.229	4.129797	-39.348756	-765.06	-877.92
5	GUIDE	986186168	9.99	4780	-0.027	0.137	0.126	0.212	4.318921	-39.027908	198.24	-1705.87
6	GUIDE	986186240	9.36	4802	0.196	0.240	0.139	0.207	4.166509	-39.491915	-1288.38	-834.37
7	GUIDE	986059312	10.15	4799	-0.545	-0.283	0.182	0.286	3.033746	-38.695256	2328.00	1436.56

2.4 Star Slots

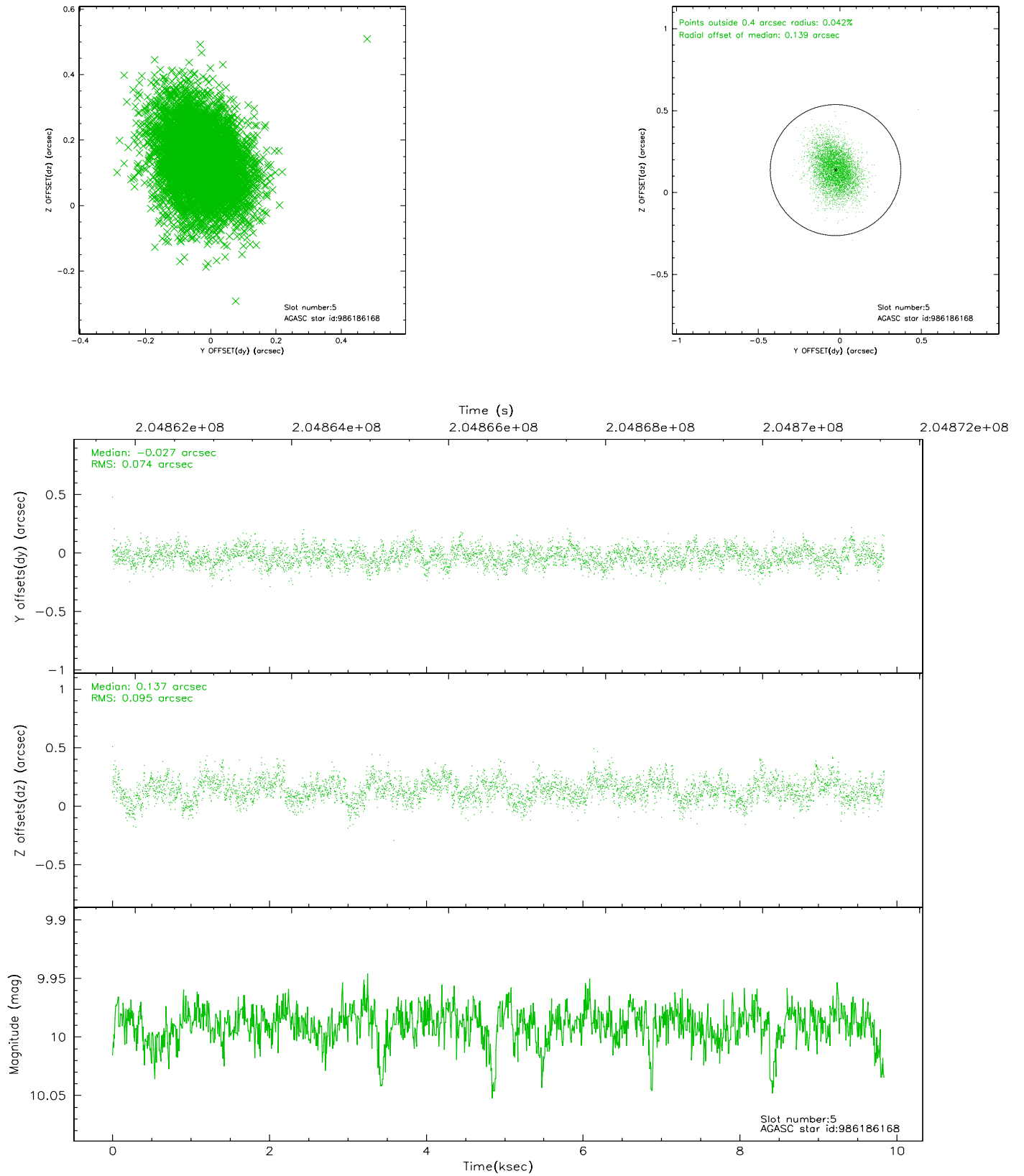
2.4.1 Slot 3



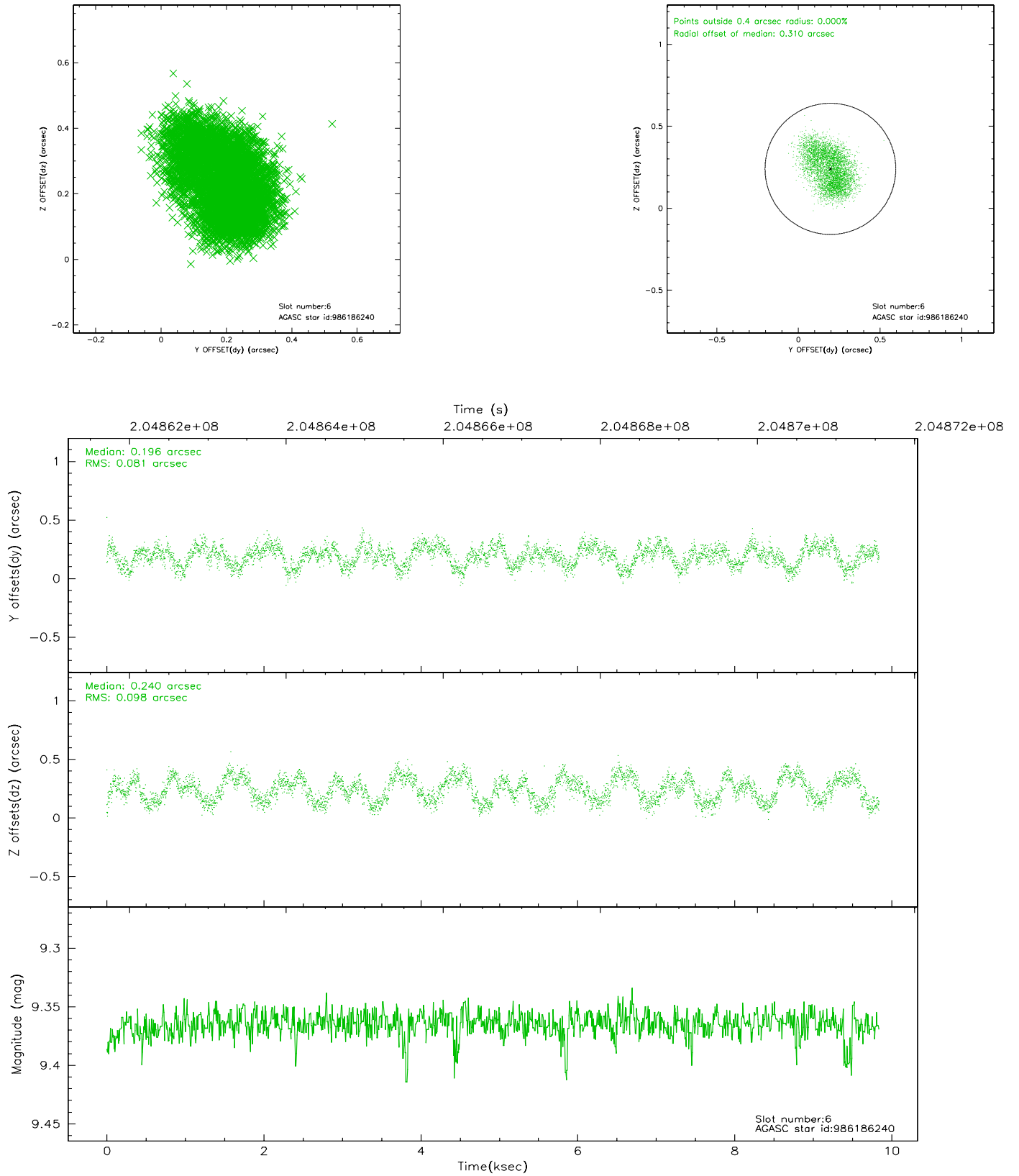
2.4.2 Slot 4



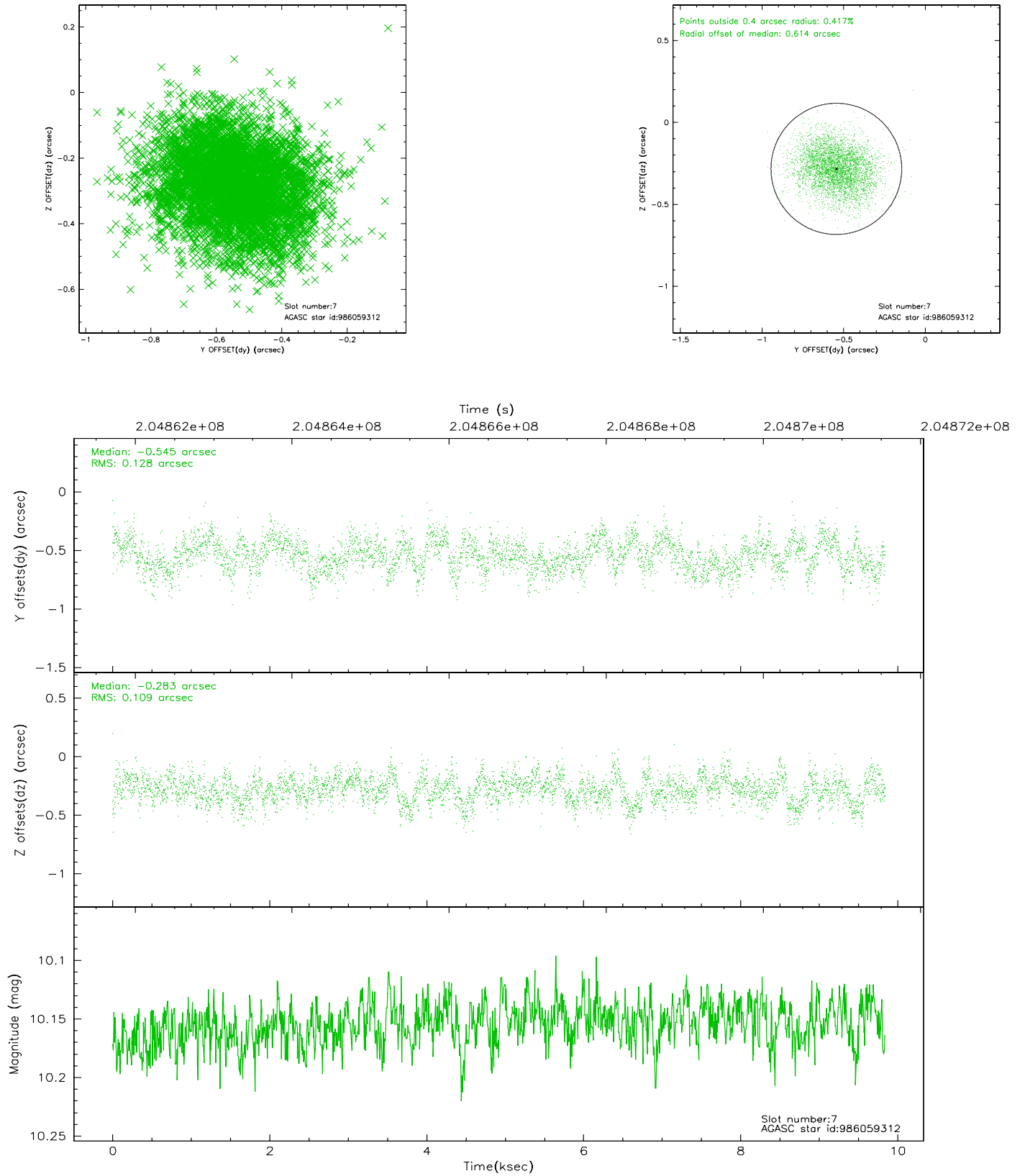
2.4.3 Slot 5



2.4.4 Slot 6

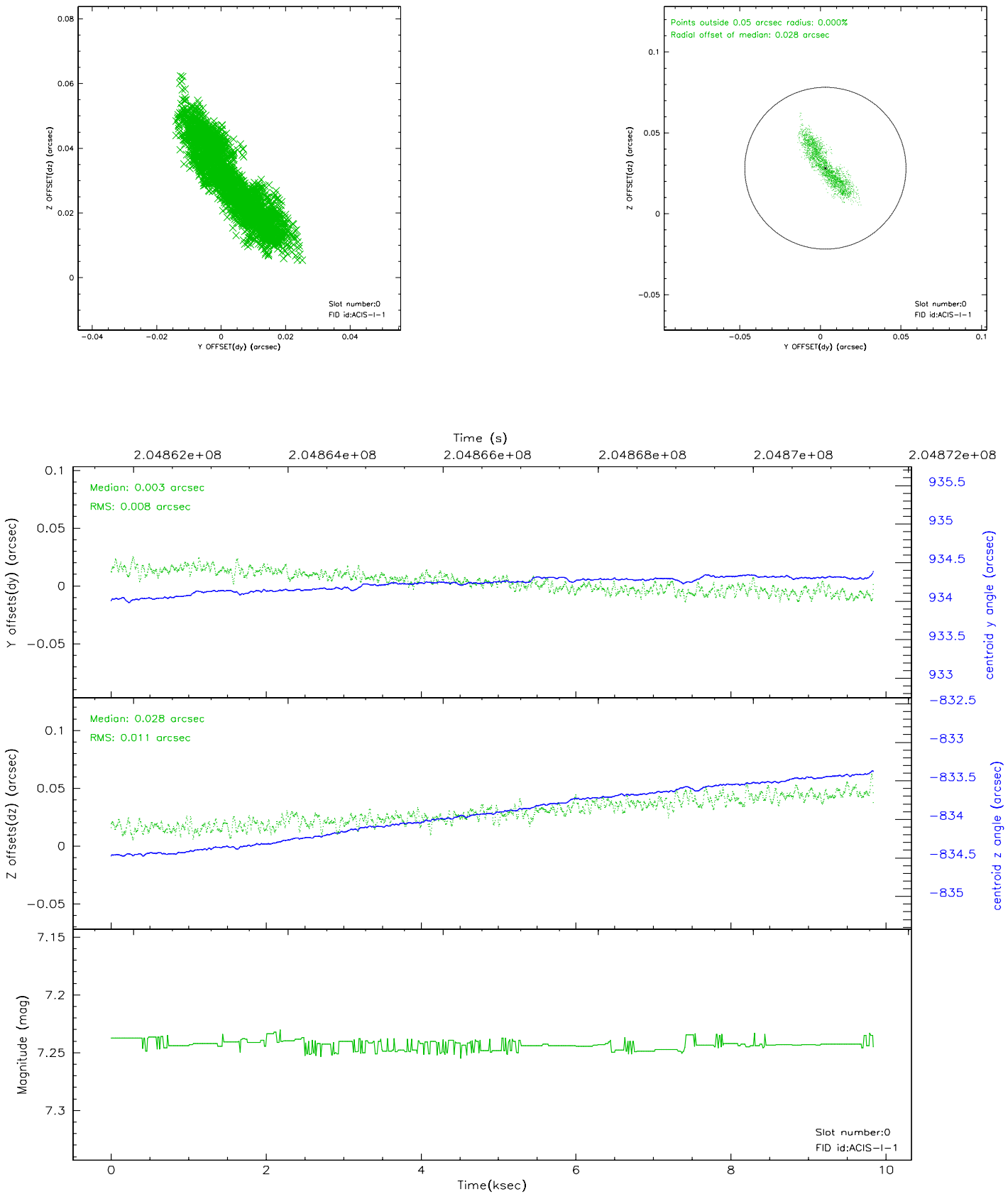


2.4.5 Slot 7

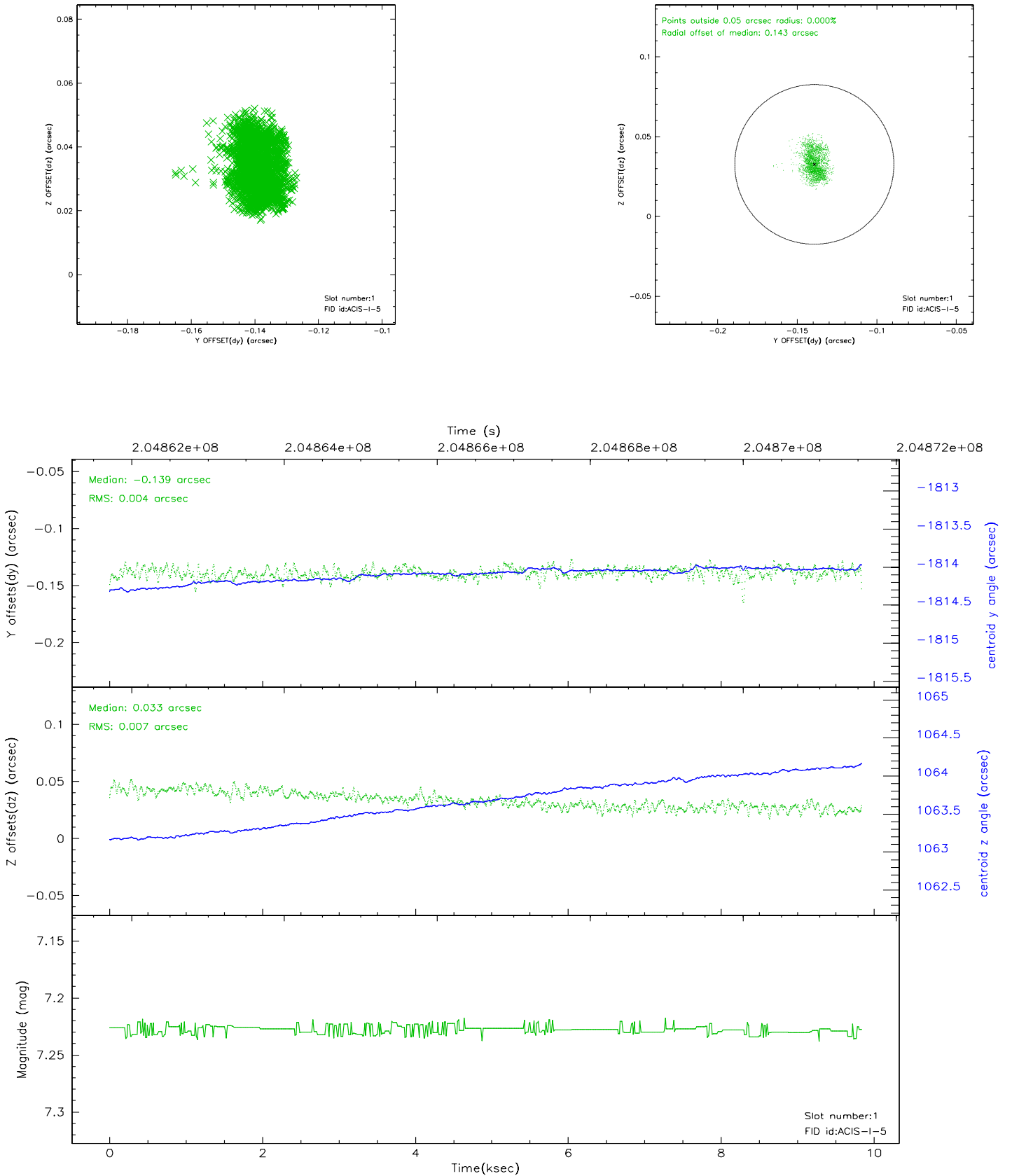


2.5 FID Slots

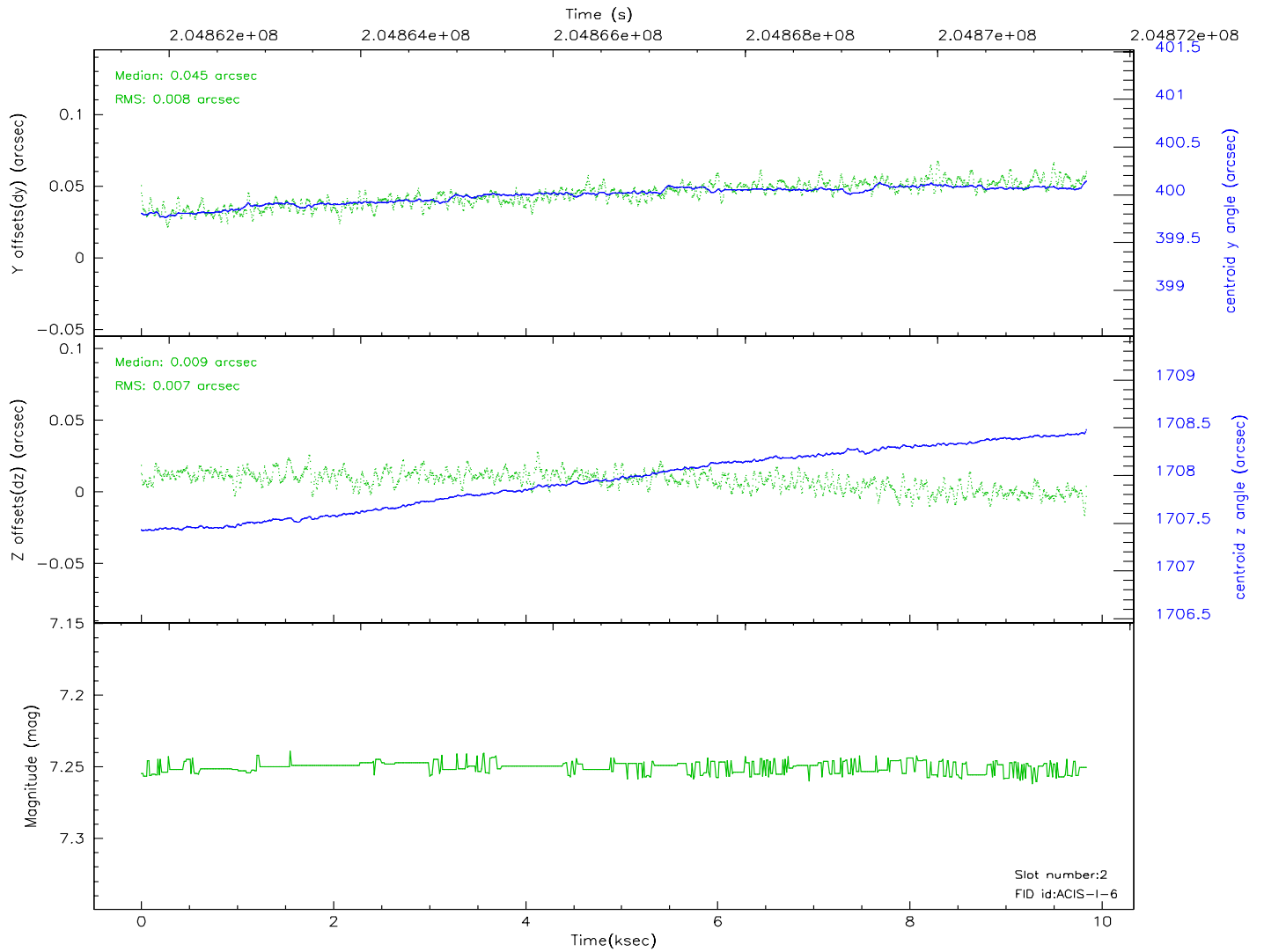
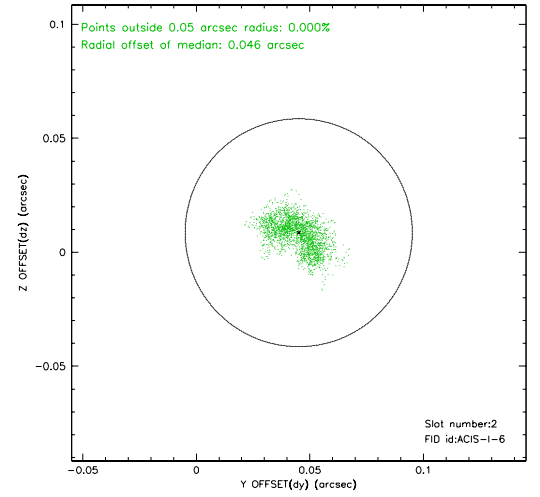
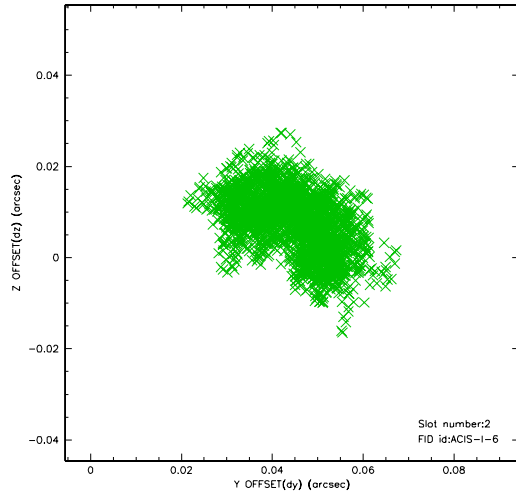
2.5.1 Slot 0



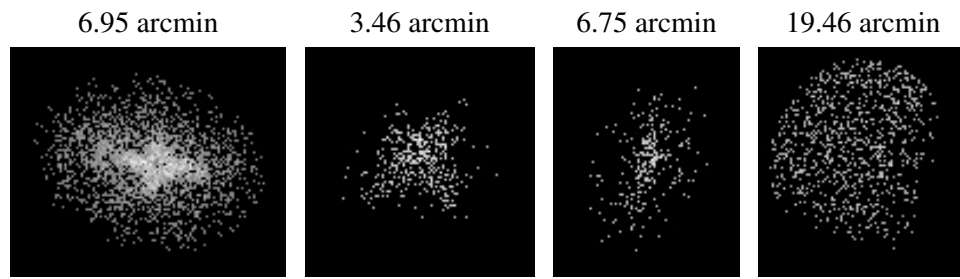
2.5.2 Slot 1



2.5.3 Slot 2



3 Point Sources



A Summary

A.1 Status

V&V Scientist	Beth Sundheim
V&V Date (YYYY-MM-DD)	2006.05.24
V&V Edition	1
V&V Disposition and Status	OK
V&V Charge Time	9.689

A.2 Comments