

V&V Reference Report

L2 ASCDS Version : 7.6.7

Observation 4544 - L2 Version 002
Chandra X-Ray Center

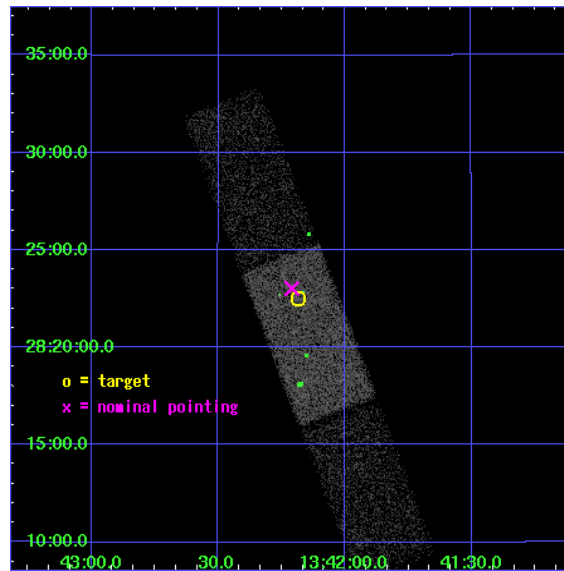
L2 Processing Date: Feb 16 2006

Contents

1	Front	2
2	OBI	3
2.1	OBI	3
2.1.1	Images	3
2.1.2	Bias	3
2.1.3	Parameters	4
2.1.4	Events	4
2.2	Compared Parameters	5
2.3	Aspect	6
2.4	Star Slots	9
2.4.1	Slot 3	9
2.4.2	Slot 4	10
2.4.3	Slot 5	11
2.4.4	Slot 6	12
2.4.5	Slot 7	13
2.5	FID Slots	14
2.5.1	Slot 0	14
2.5.2	Slot 1	15
2.5.3	Slot 2	16
3	Point Sources	17
A	Summary	18
A.1	Status	18
A.2	Comments	18

1 Front

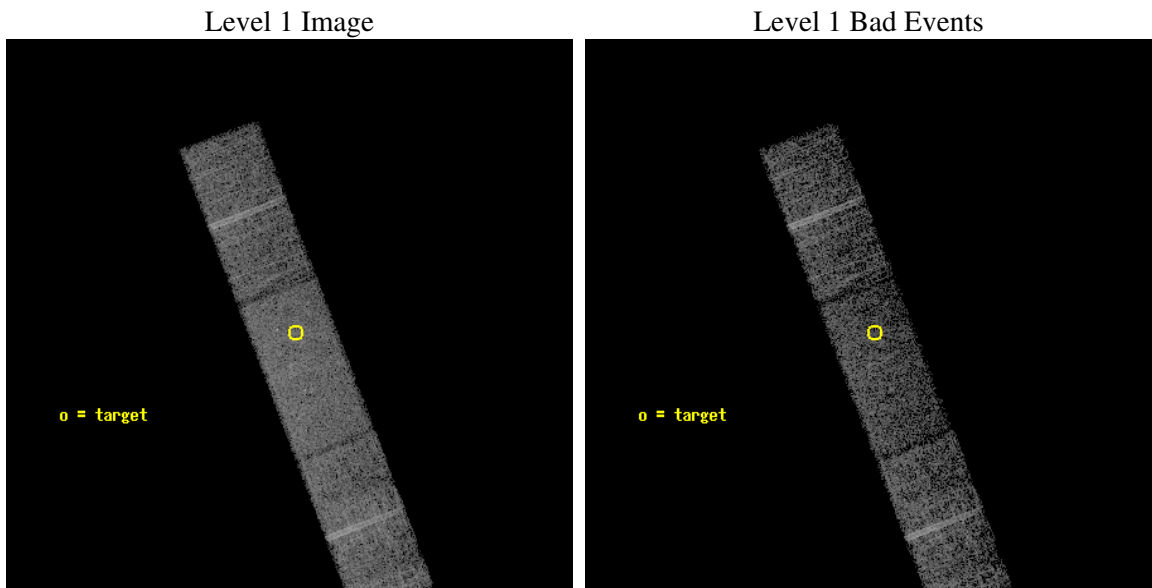
seq_num	300138
obs_id	4544
title	The Supersoft Source 1E1339.8+2837 and Globular Cluster M3
observer	Prof. Jonathan Grindlay
object	M3
dtcycle	0
cycle	P
ra_targ	205.546667
dec_targ	28.375556
ra_nom	205.55234490939
dec_nom	28.383847581693
roll_nom	69.017118717679
revision	2
ontime	9683.1999639273
livetime	9441.0373557522
ontime6	9681.5589438379
ontime7	9683.1999639273
ontime8	9683.1999639273
l2events	26235



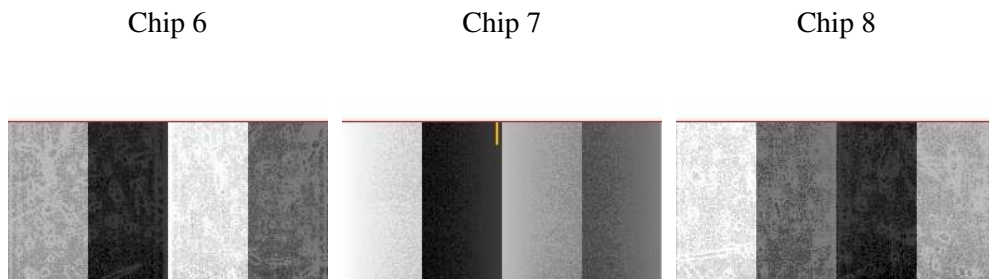
2 OBI

2.1 OBI

2.1.1 Images



2.1.2 Bias



2.1.3 Parameters

obi_num	0
ascdsver	7.6.7
caldsver	3.2.1
date	2006-02-16T17:12:32
revision	2

sched_exp_time	9500.000000
ontime	10036.498282611
ontime6	10034.857262522
ontime7	10036.498282611
ontime8	10036.498282611
l1events	138802

2.1.4 Events

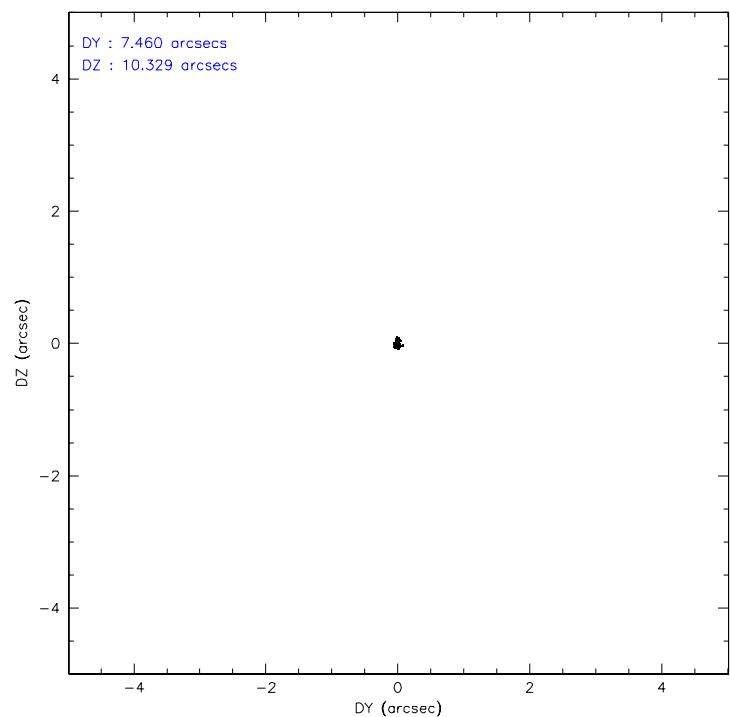
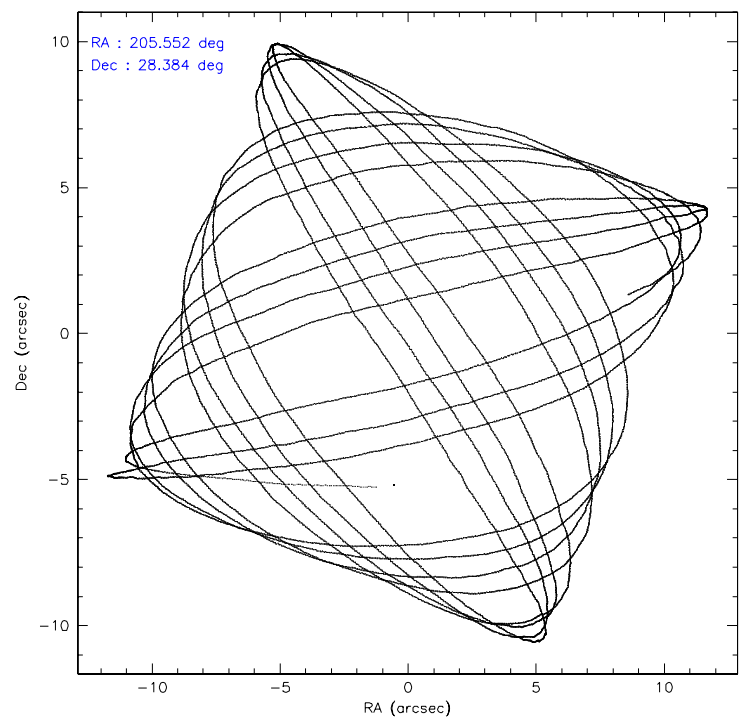
	ccd 6	ccd 7	ccd 8
level 1 events	39214	49177	50411
rejected events	34809	30128	40741
rejected %	88%	61%	80%

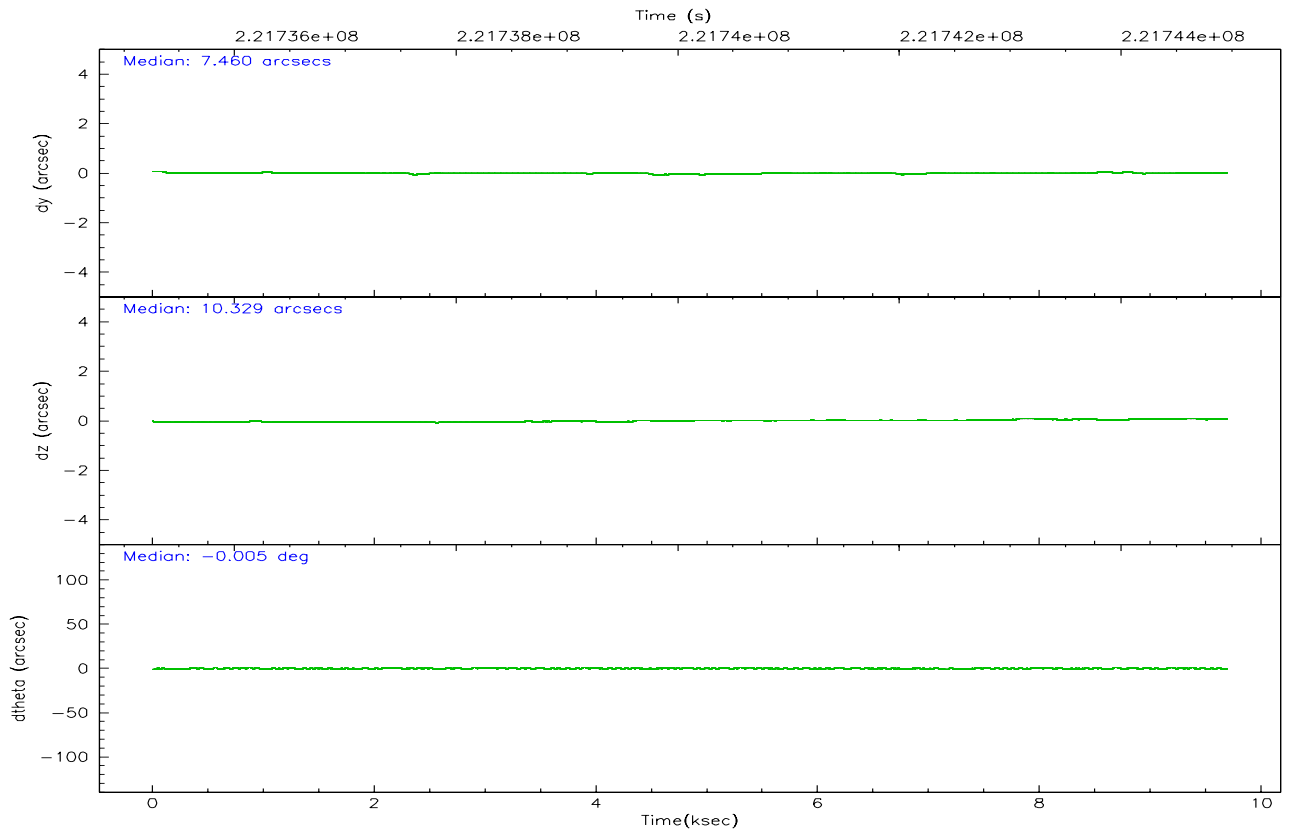
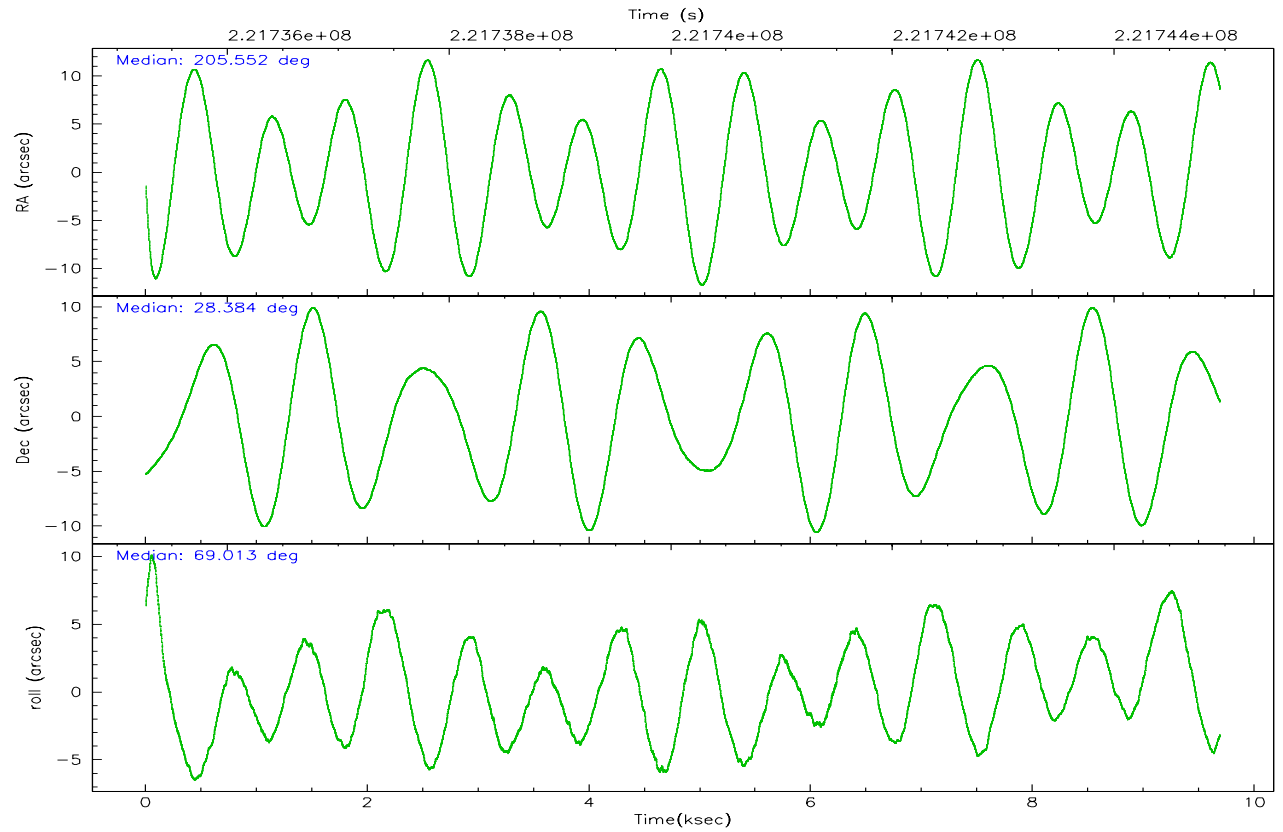
	ccd 6	ccd 7	ccd 8
grade 0 events	1758	1468	3070
	4%	2%	6%
grade 1 events	10	23	28
	0%	0%	0%
grade 2 events	871	4944	2140
	2%	10%	4%
grade 3 events	500	1252	1198
	1%	2%	2%
grade 4 events	546	1152	1086
	1%	2%	2%
grade 5 events	1674	3479	2235
	4%	7%	4%
grade 6 events	890	10874	2632
	2%	22%	5%
grade 7 events	32965	25985	38022
	84%	52%	75%

2.2 Compared Parameters

Parameter	Planned	Actual	Parameter	Planned	Actual
Instrument	ACIS	ACIS	Obspar format version number	6	6
Detector	ACIS-678	ACIS-678	Obspar file type	PREDICTED	ACTUAL
Grating	NONE	NONE	Obspar update status	NONE	UPDATED
Data mode	VFAINT	VFAINT	On-chip summing requested	N	N
Observation mode	POINTING	POINTING	Subarray requested	1/2	1/2
Pointing RA	205.557604	205.5523449093851	Subarray start row	0	257
Pointing Dec	28.357004	28.3838475816928	Subarray row count	1024	512
Pointing Roll	68.857984	69.01711871767858	Alternating exposures requested	N	N
SIM focus pos (mm)	-0.684267	-0.6828225247311905	Primary exposure time	0.000000	1.6
SIM defocus (mm)	0	0.001444936568705701			
SIM translation stage pos (mm)	-190.132523	-190.1425803651734			
SIM translation stage offset (mm)	0	0.01005778216563158			
Observation start time	221735458.184000	221734534.761			
Observation start date	2005-01-10T09:09:54	2005-01-10T08:55:34			
Observation end time	221744958.184000	221745561.71149			
Observation end date	2005-01-10T11:48:14	2005-01-10T11:59:21			
Read mode	TIMED	TIMED			

2.3 Aspect



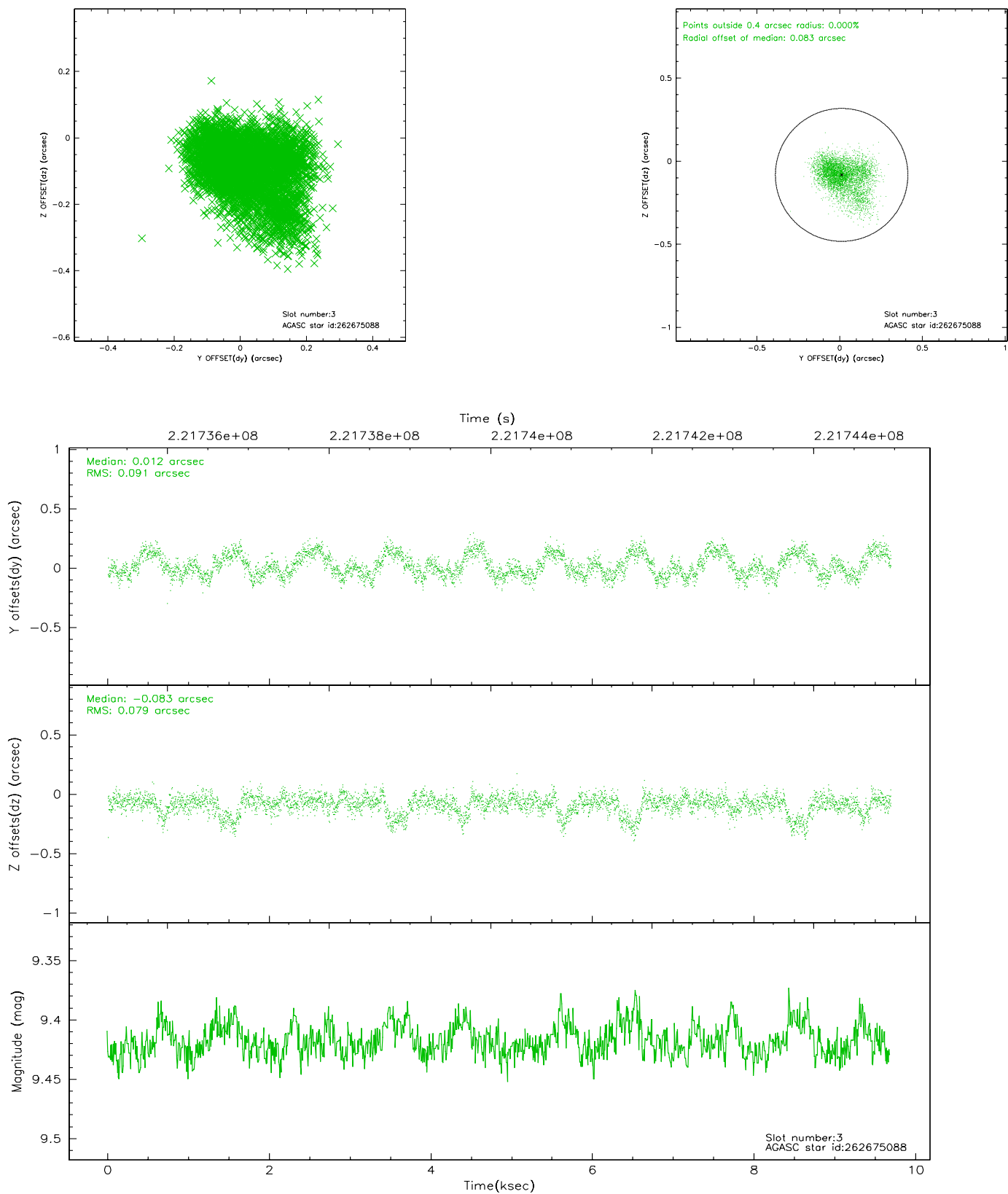


Slot Statistics

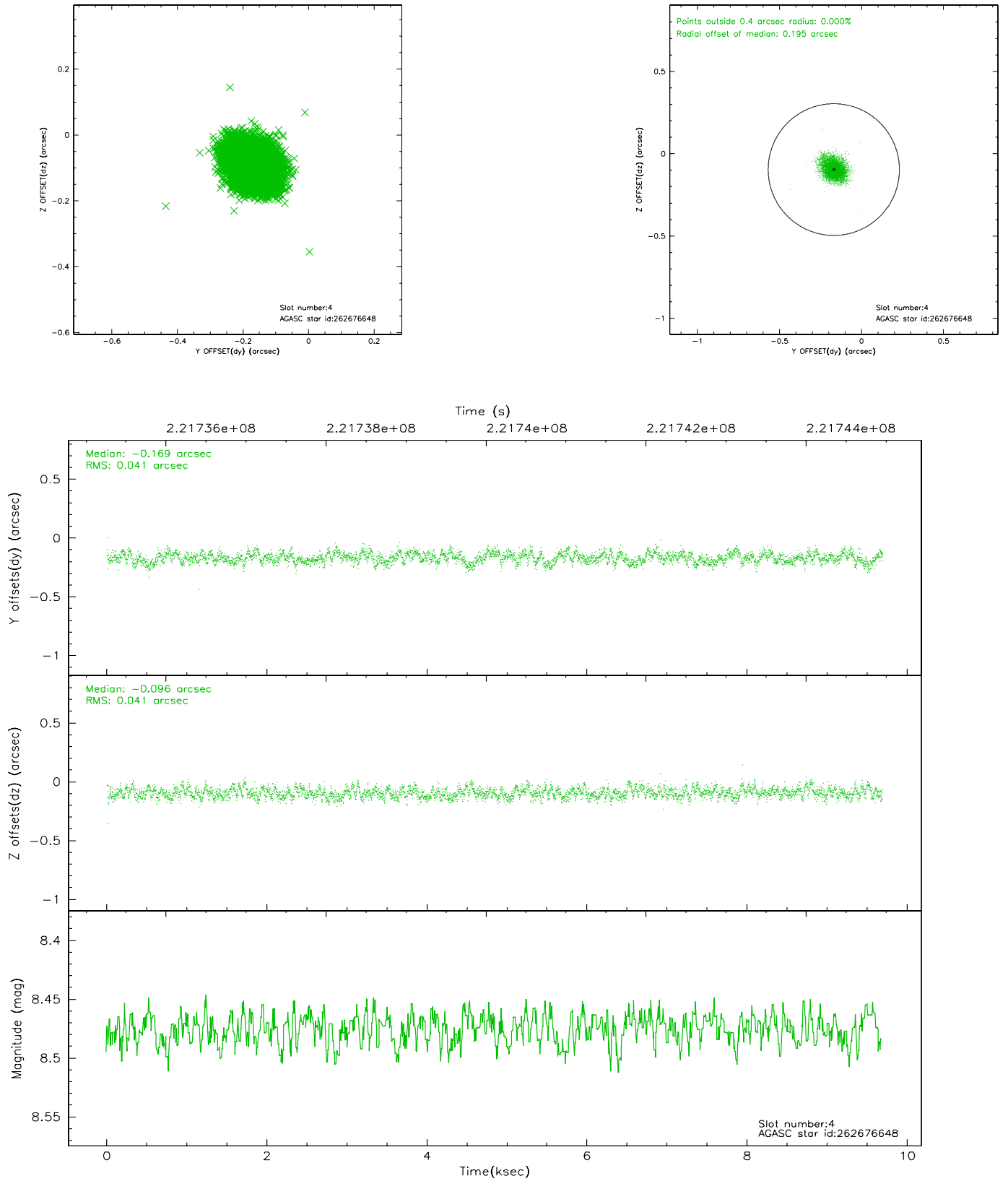
slot	status	id	mag	n_pts	med_dy	med_dz	dr1	dr2	ra	dec	mean_y	mean_z
0	FID	ACIS-S-2	7.11	2363	-0.045	-0.007	0.007	0.011	0.000000	0.000000	-760.22	-1731.56
1	FID	ACIS-S-4	7.21	2363	0.069	0.023	0.005	0.009	0.000000	0.000000	2152.87	176.46
2	FID	ACIS-S-5	7.23	2362	-0.056	-0.008	0.006	0.010	0.000000	0.000000	-1812.41	170.63
3	GUIDE	262675088	9.42	4724	0.012	-0.083	0.127	0.211	204.972671	28.348526	-692.79	1719.03
4	GUIDE	262676648	8.47	4727	-0.169	-0.096	0.061	0.100	205.067150	29.027569	1697.22	2312.21
5	GUIDE	262679552	8.58	4723	0.171	0.175	0.078	0.127	205.617019	28.202388	-450.73	-375.76
6	GUIDE	262681752	9.58	4725	-0.023	-0.101	0.086	0.142	205.441552	28.454810	195.94	469.55
7	GUIDE	262673792	7.43	4726	-0.004	0.109	0.063	0.099	206.043917	27.585501	-2027.78	-2447.87

2.4 Star Slots

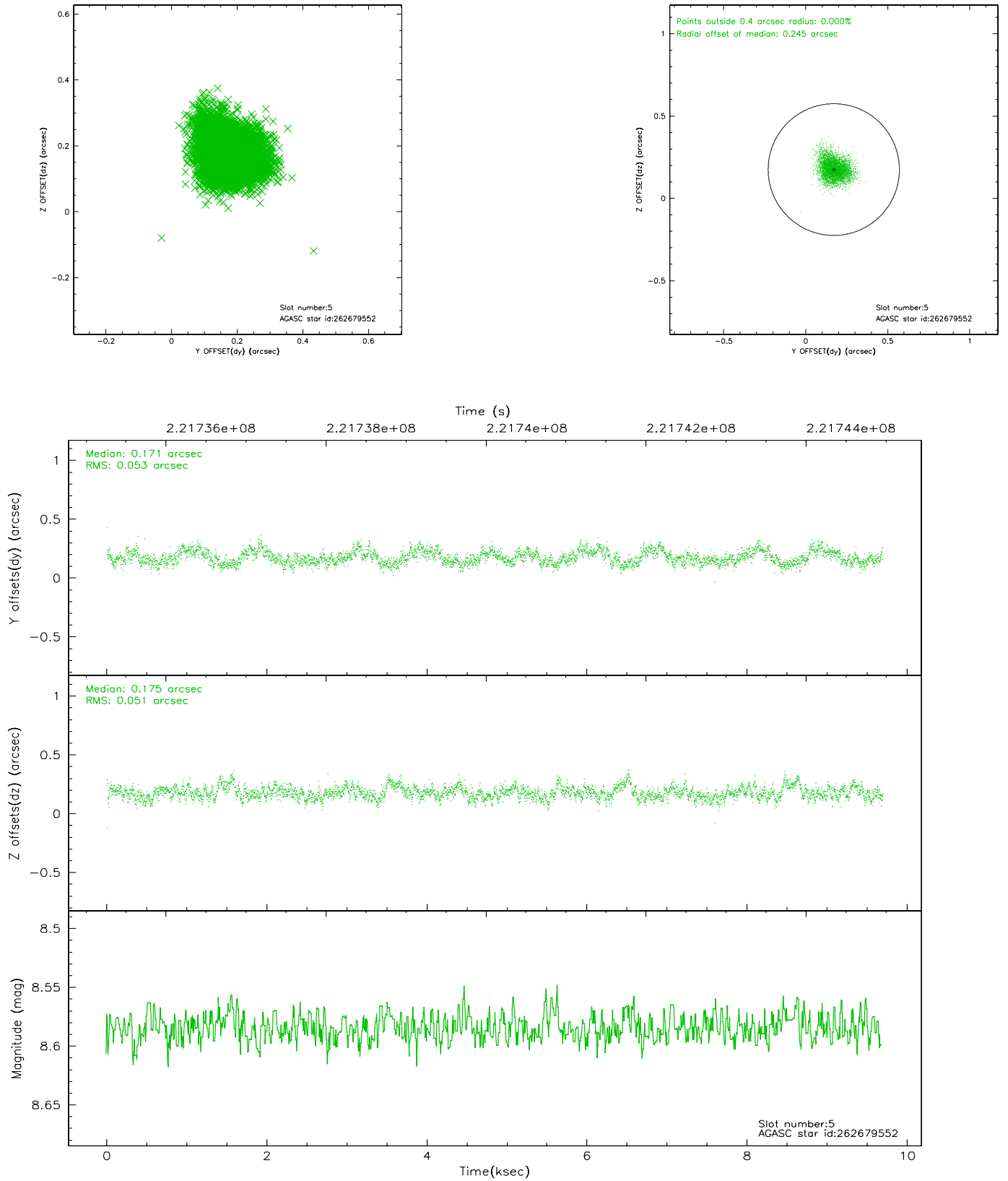
2.4.1 Slot 3



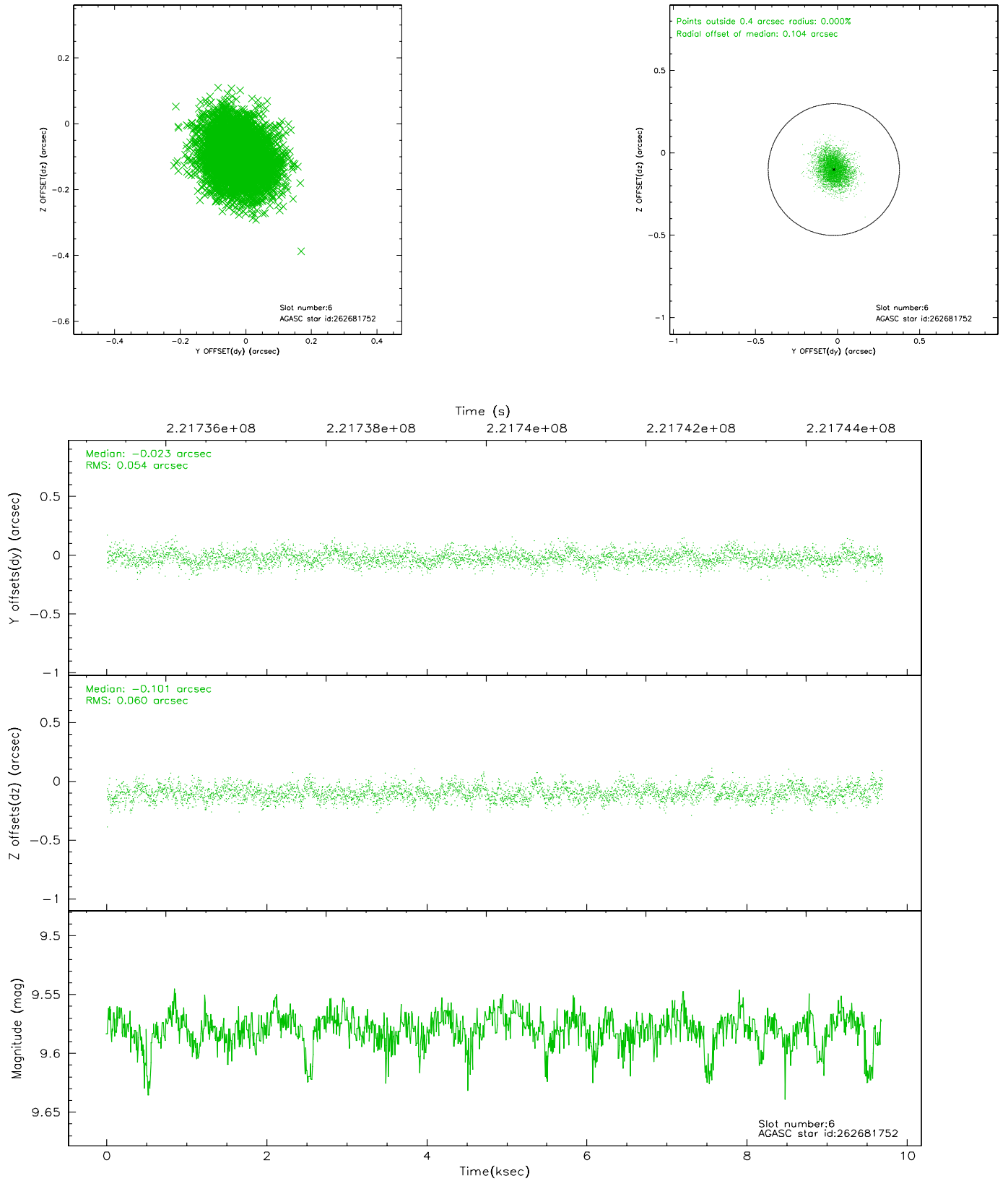
2.4.2 Slot 4



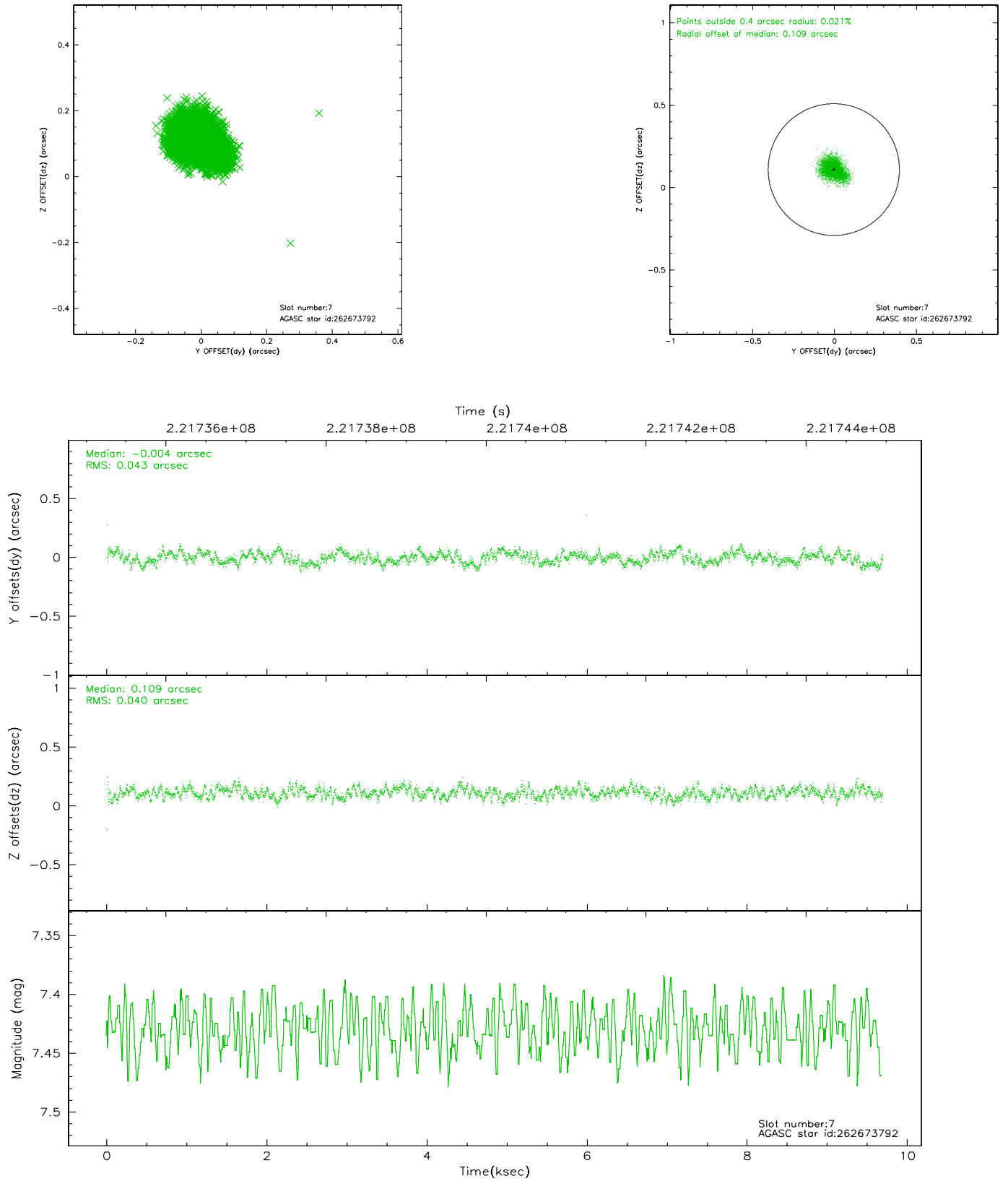
2.4.3 Slot 5



2.4.4 Slot 6

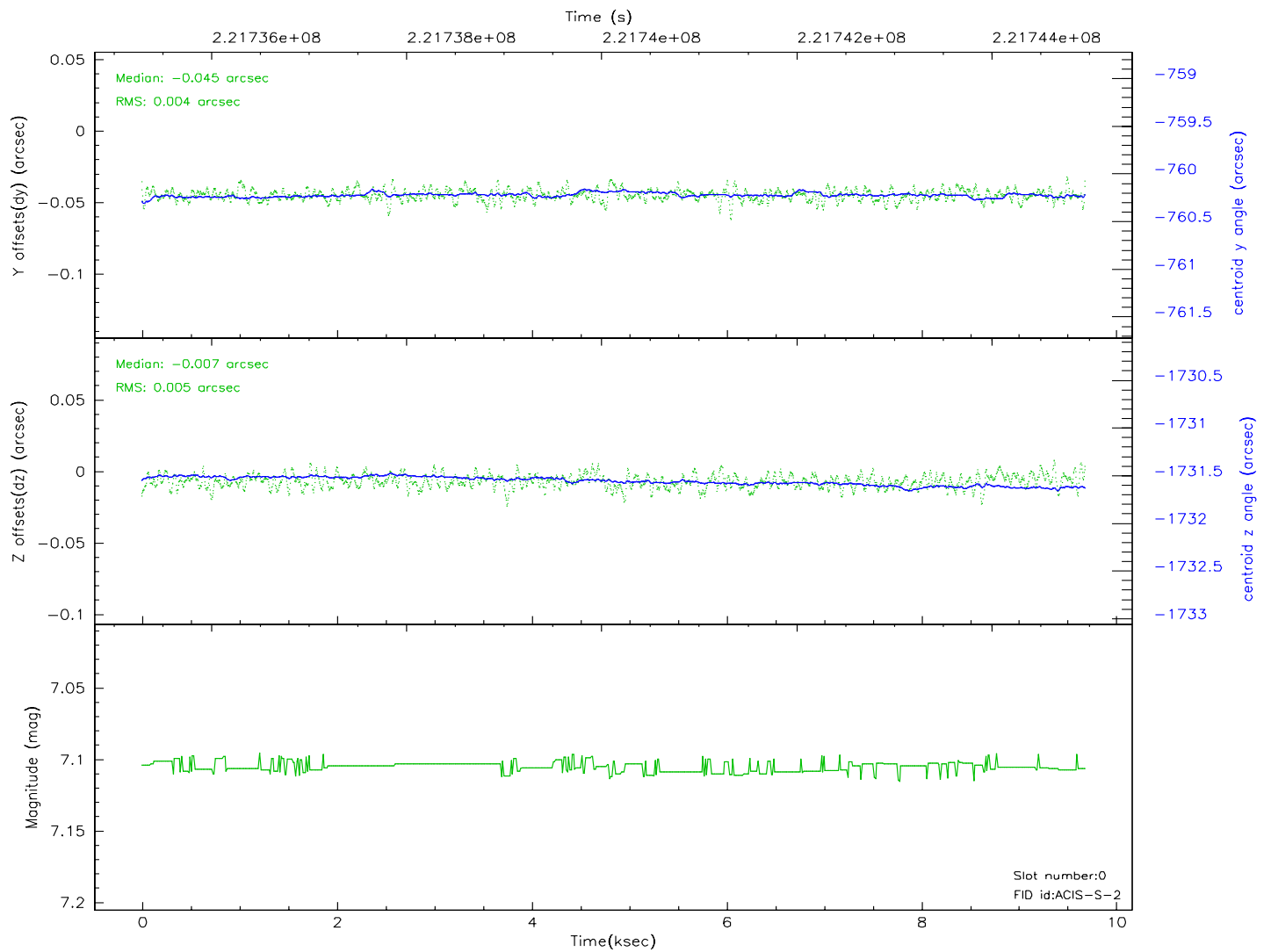
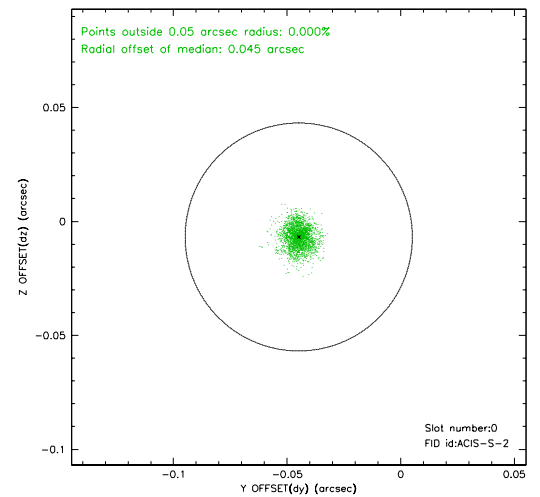
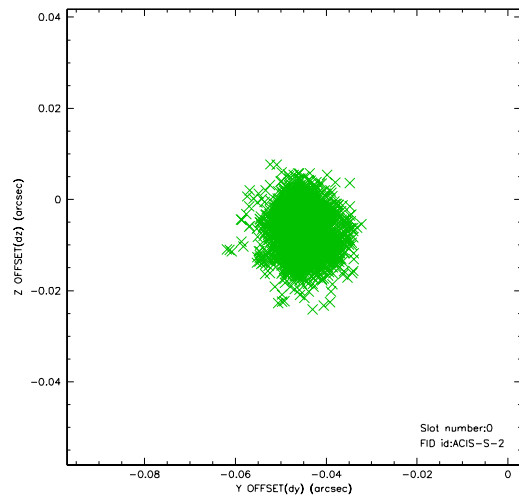


2.4.5 Slot 7

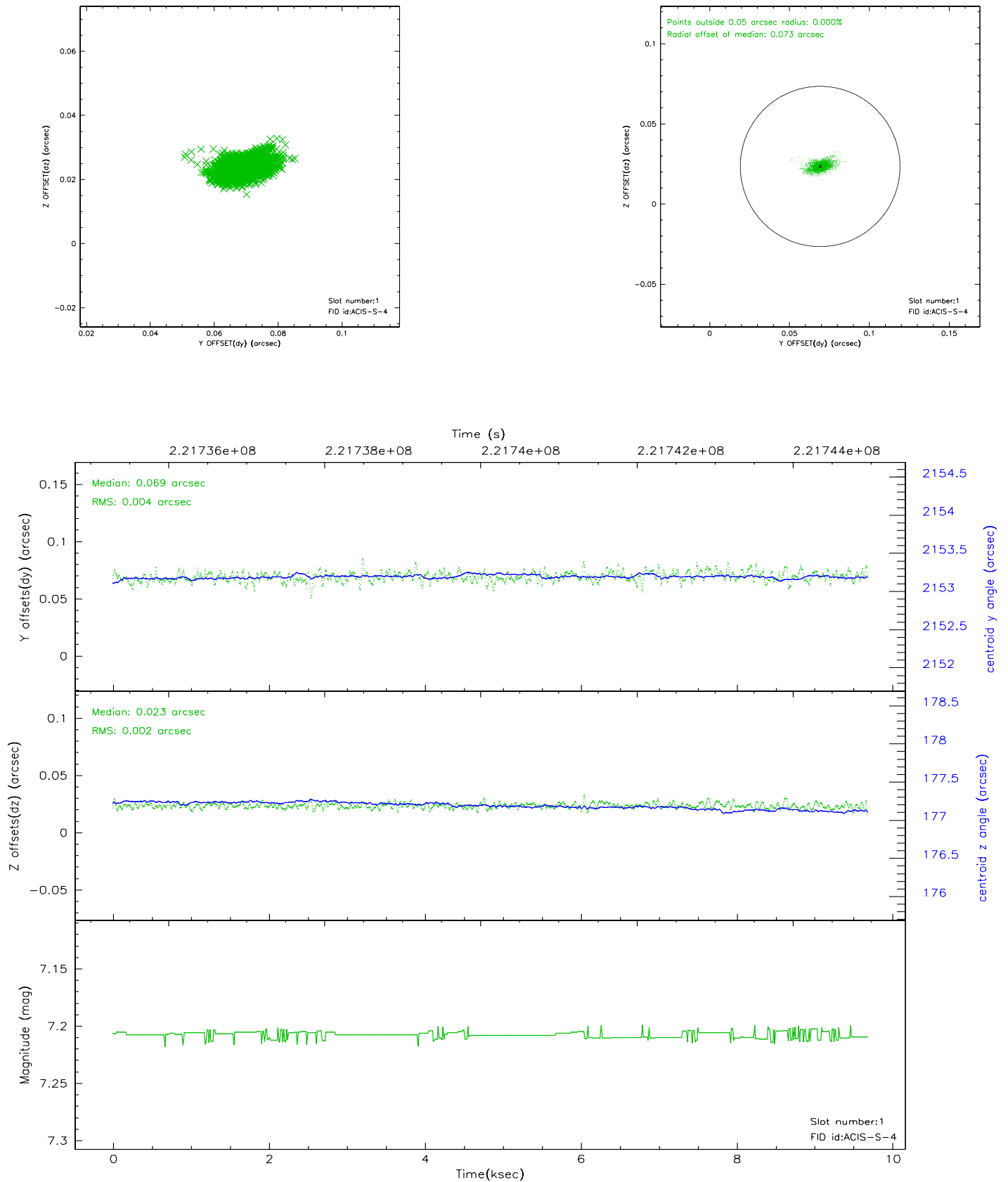


2.5 FID Slots

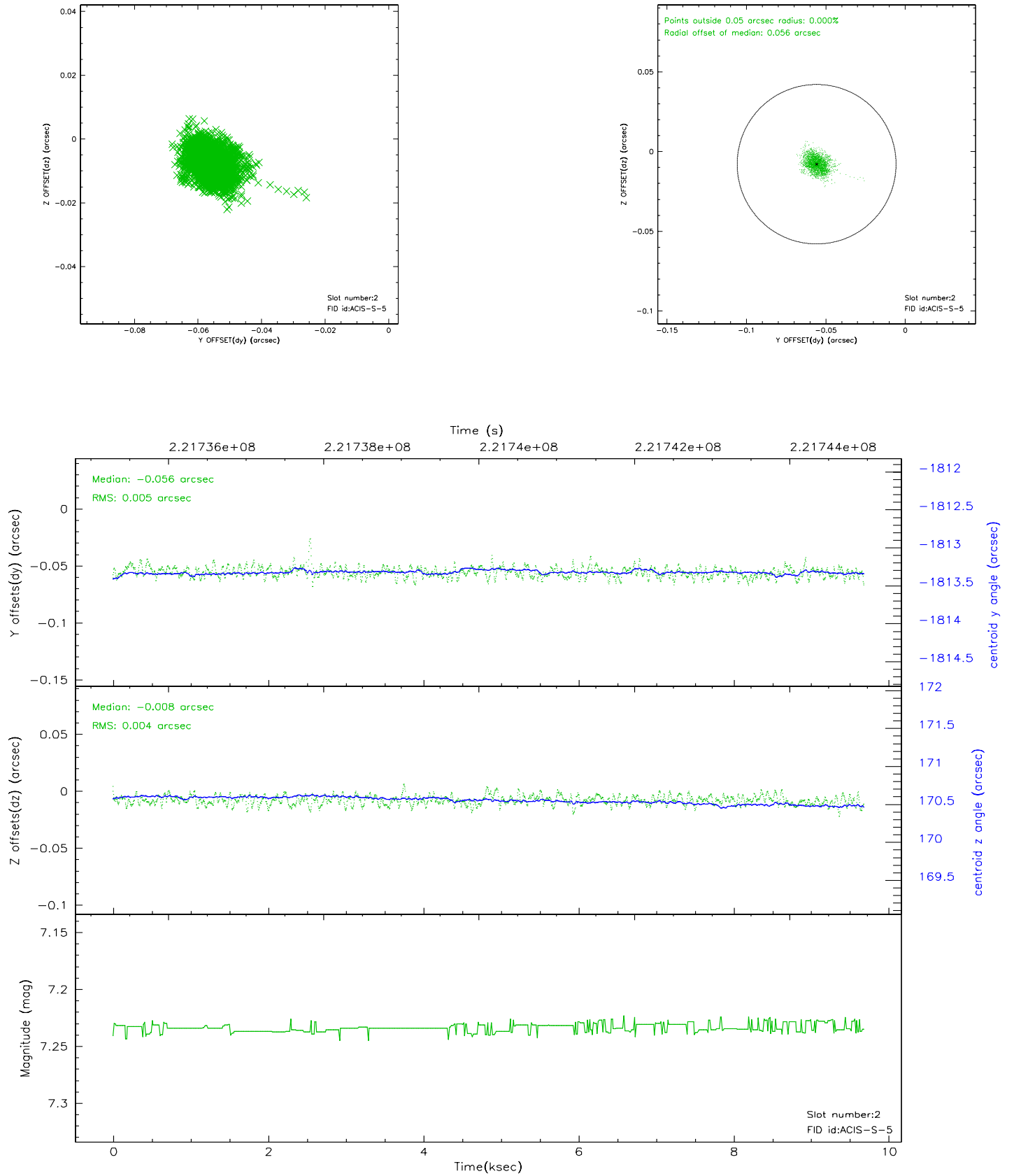
2.5.1 Slot 0



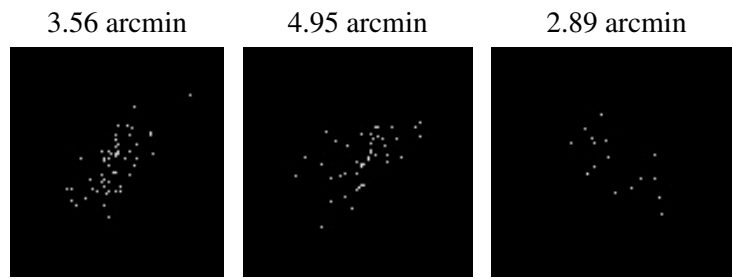
2.5.2 Slot 1



2.5.3 Slot 2



3 Point Sources



A Summary

A.1 Status

V&V Scientist	Beth Sundheim
V&V Date (YYYY-MM-DD)	2006.02.16
V&V Edition	1
V&V Disposition and Status	OK
V&V Charge Time	9.683199

A.2 Comments

Charge time:

Using existing charge time of 9.683199.