

V&V Reference Report

L2 ASCDS Version : 8.4.5

Observation 4414 - L2 Version 3
Chandra X-Ray Center

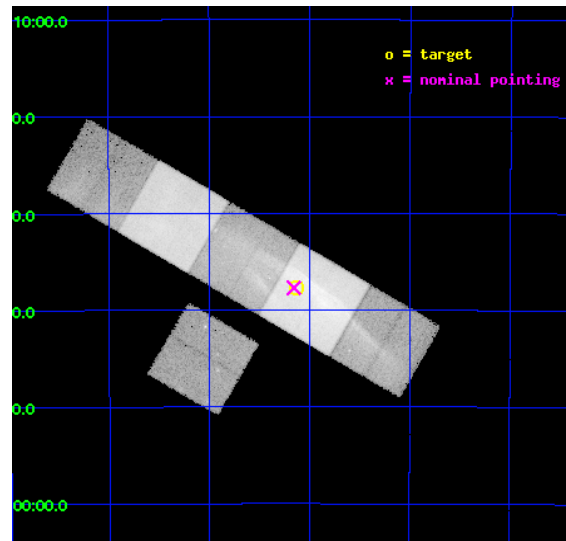
L2 Processing Date : Oct 20 2012

Contents

1	Front	2
2	OBI	3
2.1	OBI	3
2.1.1	Images	3
2.1.2	Bias	3
2.1.3	Parameters	4
2.1.4	Events	4
2.2	Compared Parameters	5
2.3	Aspect	6
2.4	Star Slots	9
2.4.1	Slot 3	9
2.4.2	Slot 4	10
2.4.3	Slot 5	11
2.4.4	Slot 6	12
2.4.5	Slot 7	13
2.5	FID Slots	14
2.5.1	Slot 0	14
2.5.2	Slot 1	15
2.5.3	Slot 2	16
A	Summary	17
A.1	Status	17
A.2	Comments	17

1 Front

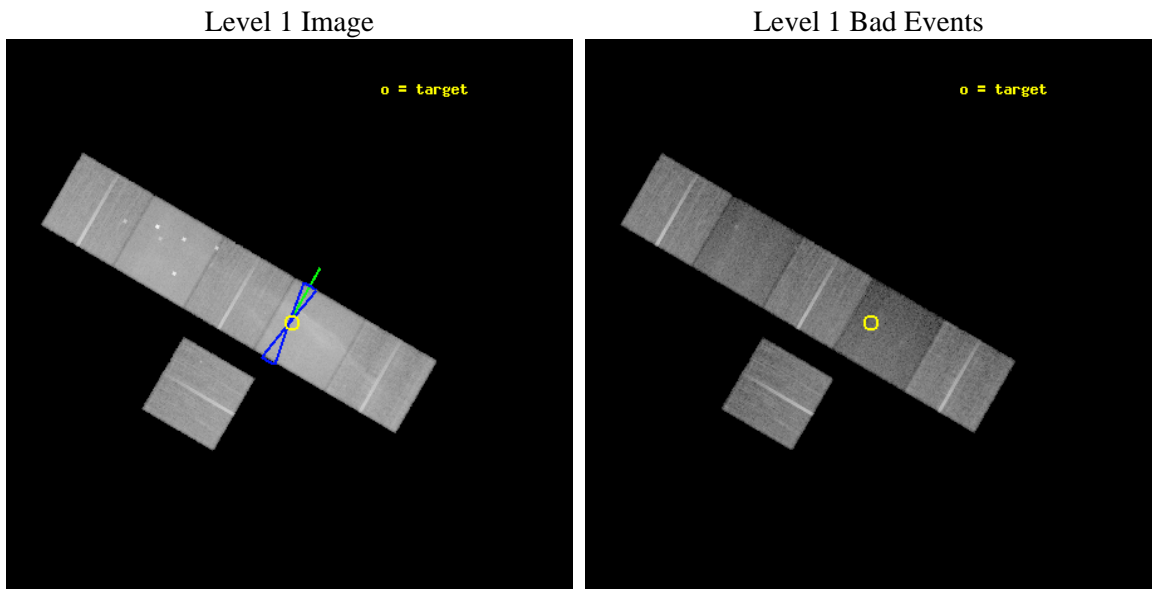
seq_num	500325	Sequence number
obs_id	4414	Observation id
title	A STUDY OF THE X-RAY LUMINOUS NORTHWESTERN RIM OF THE GALACTIC SUPERNOVA REMNANT G266.2-1.2	Proposal title
observer	Dr. Thomas Pannuti	Principal investigator
object	G266.2-1.2 - NW	Source name
dtcycle	0	
cycle	P	events from which exps? Prim/Second/Both
ra_targ	132.283	Observer's specified target RA [deg]
dec_targ	-45.629	Observer's specified target Dec [deg]
ra_nom	132.2891329792	Nominal RA [deg]
dec_nom	-45.628431517382	Nominal Dec [deg]
roll_nom	30.161013176624	Nominal Roll [deg]
revision	3	Processing version of data
ontime	34962.516688675	Sum of GTIs [s]
livetime	34519.800250463	Livetime [s]
ontime2	34959.111518532	Sum of GTIs [s]
ontime4	34956.075728297	Sum of GTIs [s]
ontime5	34959.234638542	Sum of GTIs [s]
ontime6	34952.71157825	Sum of GTIs [s]
ontime7	34962.516688675	Sum of GTIs [s]
ontime8	34959.152568519	Sum of GTIs [s]
l2events	651294	Number of level 2 events



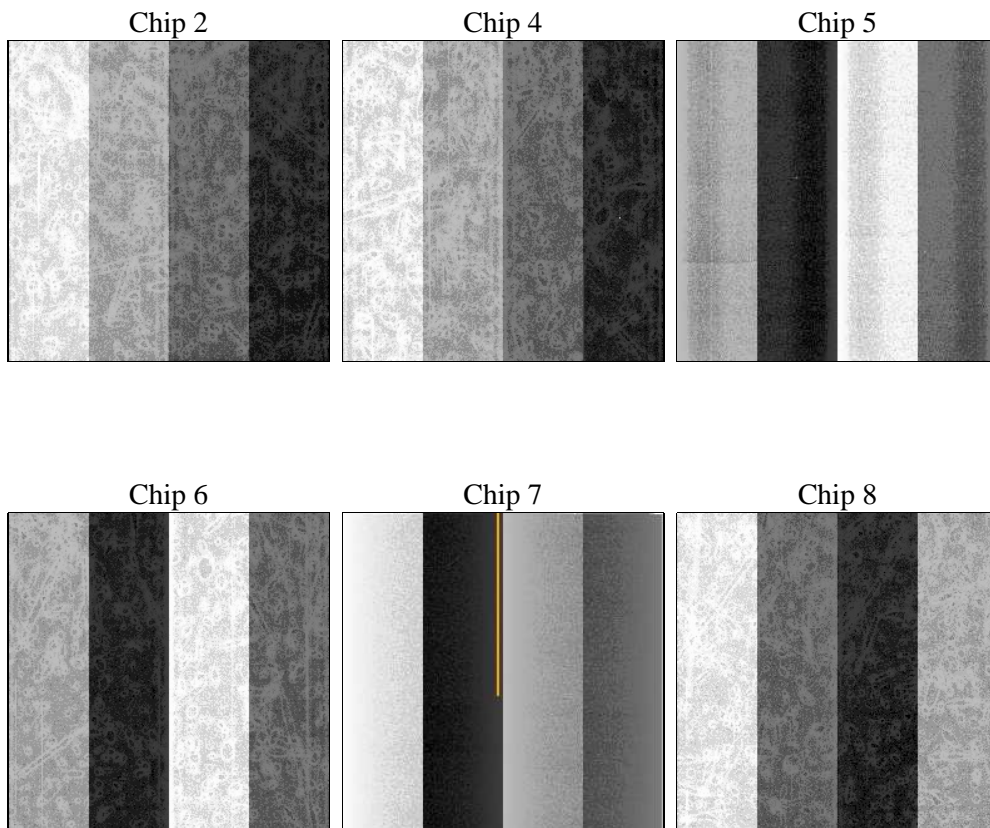
2 OBI

2.1 OBI

2.1.1 Images



2.1.2 Bias



2.1.3 Parameters

obi_num	0	Obi number	sched_exp_time	35007.919000	[s] Scheduled observation exposure time
ascdsver	8.4.5	Processing system revision	ontime	34962.516688675	Sum of GTIs [s]
caldsver	4.5.2	 	ontime2	34959.111518532	Sum of GTIs [s]
date	2012-10-20T17:10:16	Date and time of file creation	ontime4	34956.075728297	Sum of GTIs [s]
revision	3	Processing version of data	ontime5	34959.234638542	Sum of GTIs [s]
			ontime6	34952.71157825	Sum of GTIs [s]
			ontime7	34962.516688675	Sum of GTIs [s]
			ontime8	34959.152568519	Sum of GTIs [s]
			l1events	1579538	Number of level 1 events

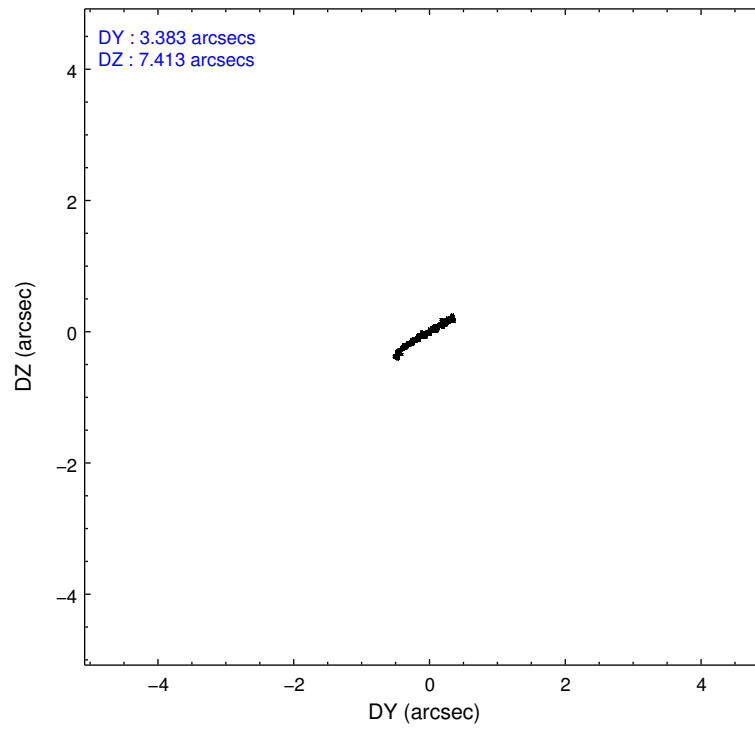
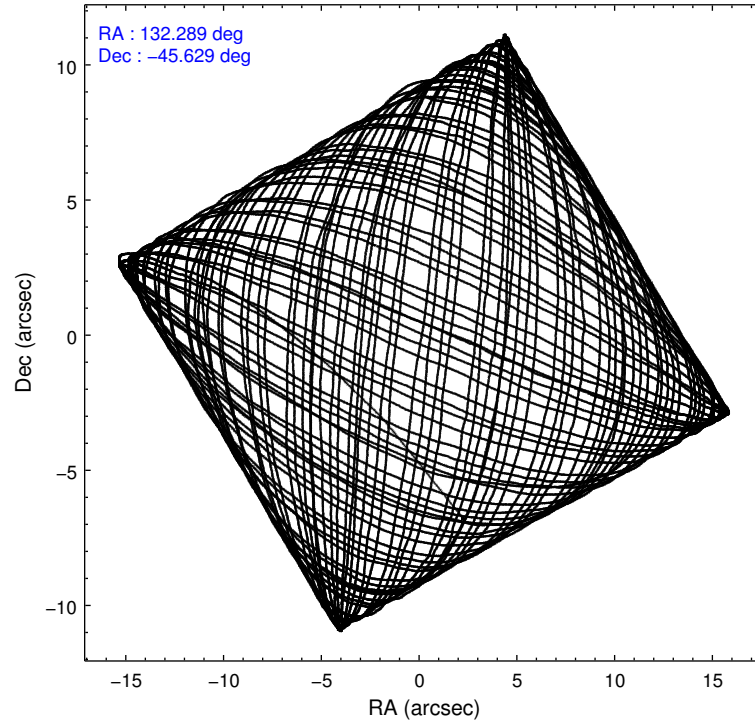
2.1.4 Events

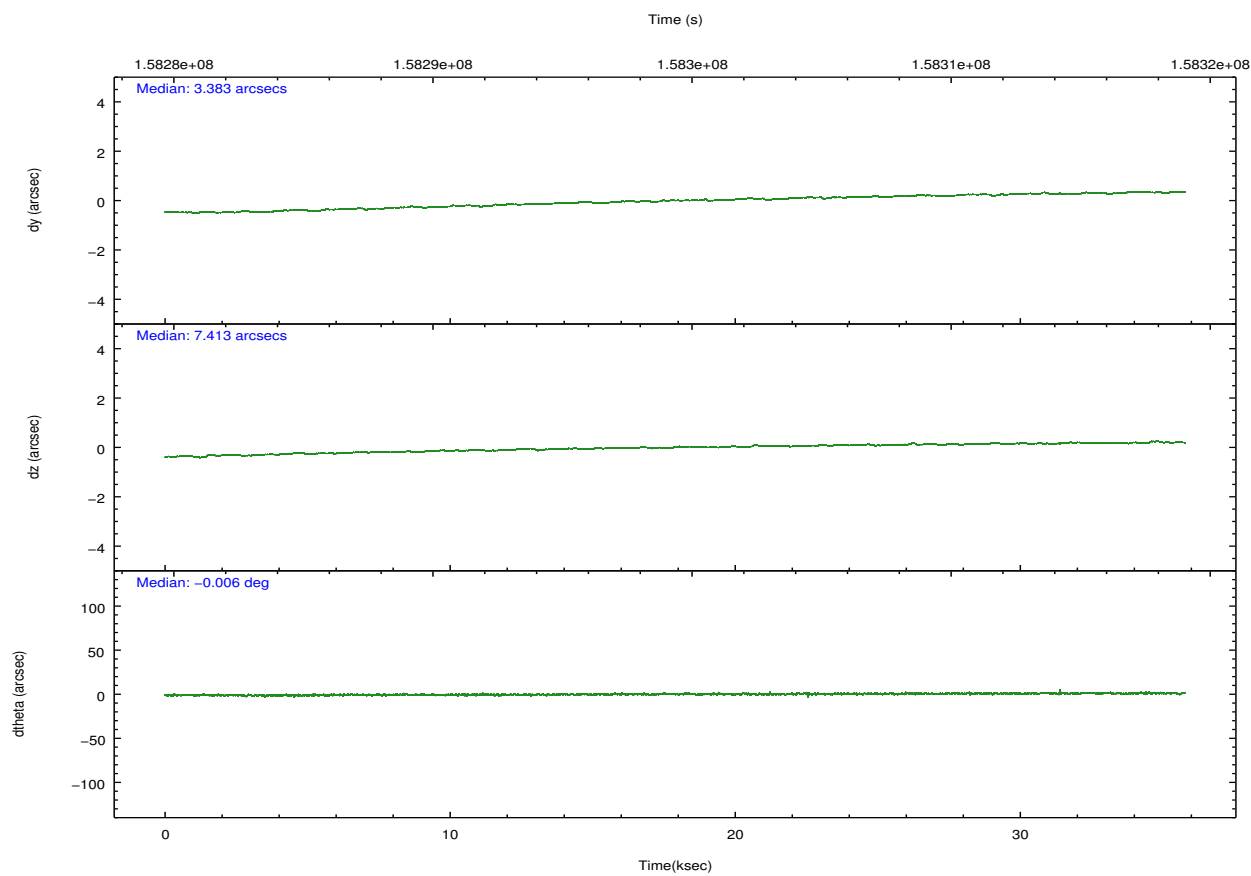
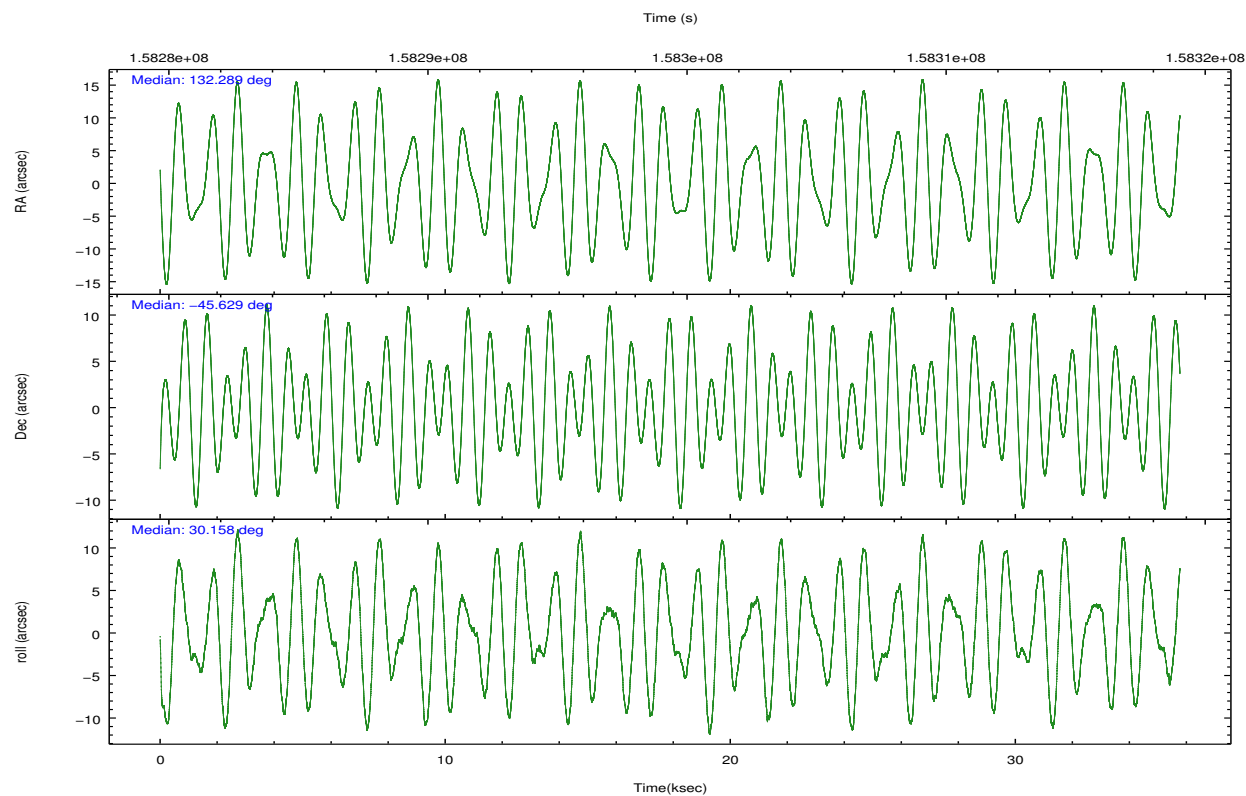
	ccd 2	ccd 4	ccd 5	ccd 6	ccd 7	ccd 8		ccd 2	ccd 4	ccd 5	ccd 6	ccd 7	ccd 8
level 1 events	199968	220852	309244	237434	363990	248050	grade 0 events	25333	26018	64339	60730	101572	44826
rejected events	162367	181555	98119	158298	81782	166222		12%	11%	20%	25%	27%	18%
rejected %	81%	82%	31%	66%	22%	67%	grade 1 events	147	275	514	278	182	244
								0%	0%	0%	0%	0%	0%
							grade 2 events	5044	5400	59223	8254	64364	12874
								2%	2%	19%	3%	17%	5%
							grade 3 events	2217	2416	12885	3034	28031	5851
								1%	1%	4%	1%	7%	2%
							grade 4 events	2146	2390	13021	3009	27663	5633
								1%	1%	4%	1%	7%	2%
							grade 5 events	4633	5600	18081	5776	18265	8630
								2%	2%	5%	2%	5%	3%
							grade 6 events	2874	3076	61678	4127	60620	12652
								1%	1%	19%	1%	16%	5%
							grade 7 events	157574	175677	79503	152226	63293	157340
								78%	79%	25%	64%	17%	63%

2.2 Compared Parameters

Parameter	Planned	Actual	Parameter	Planned	Actual
Instrument	ACIS	ACIS	Obspar format version number	7	7
Detector	ACIS-245678	ACIS-245678	Obspar file type	PREDICTED	ACTUAL
Grating	NONE	NONE	Obspar update status	NONE	UPDATED
Data mode	VFAINT	VFAINT	Number of optional ACIS chips dropped	0	0
Observation mode	POINTING	POINTING	On-chip summing requested	N	N
[deg] Pointing RA	132.270254	132.289132979203	Subarray requested	NONE	NONE
[deg] Pointing Dec	-45.652229	-45.62843151738234	Alternating exposures requested	N	N
[deg] Pointing Roll	29.990887	30.16101317662364	[s] Primary exposure time	0.000000	3.2
[deg] Roll angle	30.000000	30.000000			
[deg] Roll tolerance	10.000000	10.000000			
Roll constraint allows 180D rotation	Y	Y			
[mm] SIM focus pos	-0.684267	-0.6828225247311905			
[mm] SIM defocus	0	0.001444936568705701			
[mm] SIM translation stage pos	-190.132523	-190.1400660498719			
[mm] SIM translation stage offset	0	0.00754346686406393			
[s] Observation start time (MET)	158282221.184000	158280972.20129			
Observation start date	2003-01-06T23:15:57	2003-01-06T22:56:12			
[s] Observation end time (MET)	158317229.184000	158317544.20282			
Observation end date	2003-01-07T08:59:25	2003-01-07T09:05:44			
Read mode	TIMED	TIMED			

2.3 Aspect



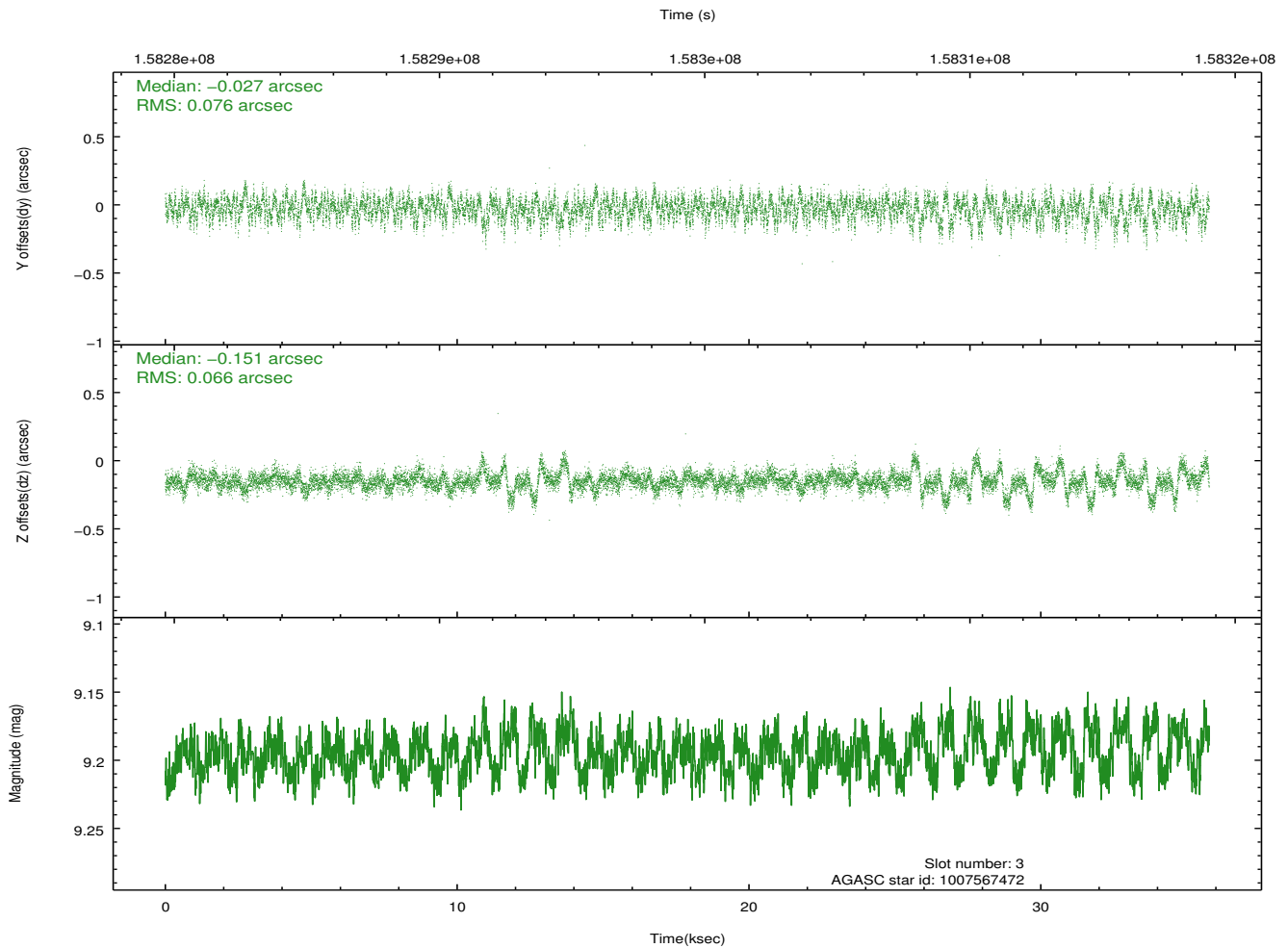
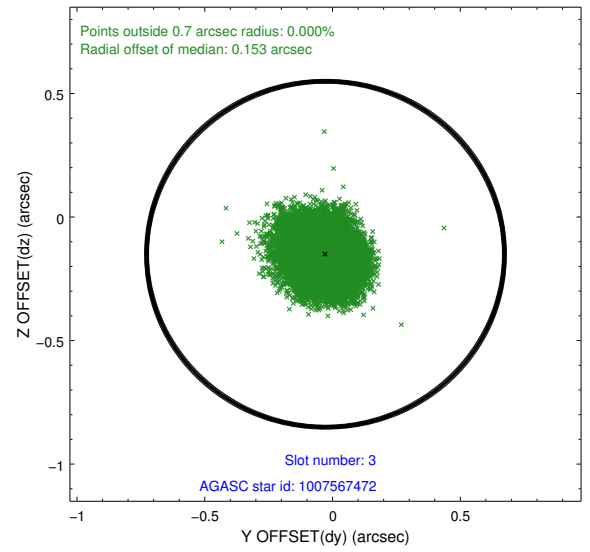
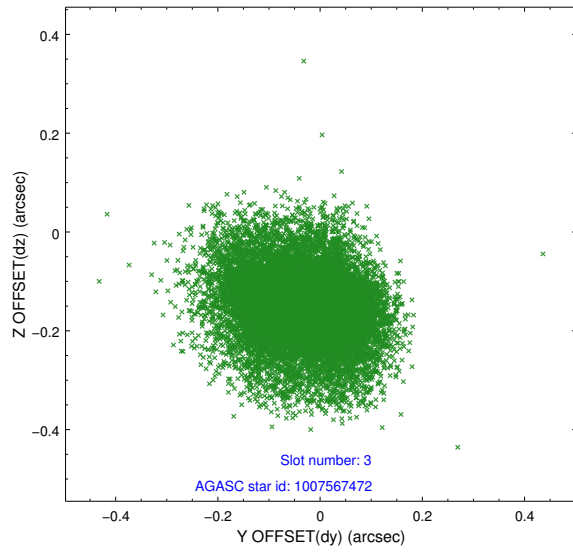


Slot Statistics

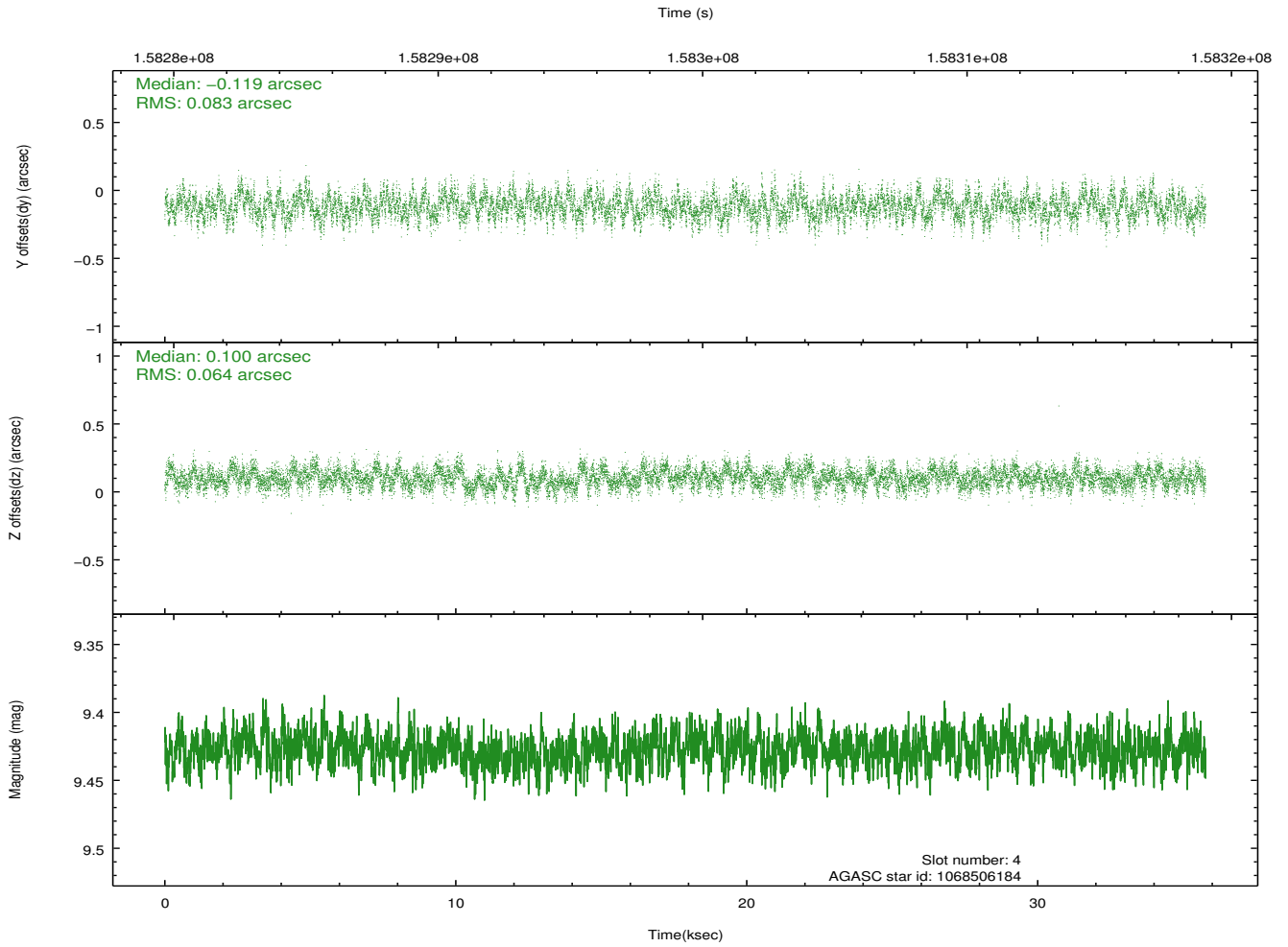
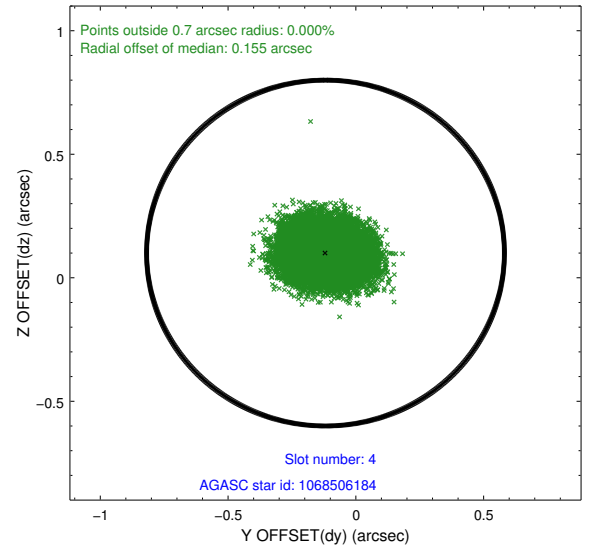
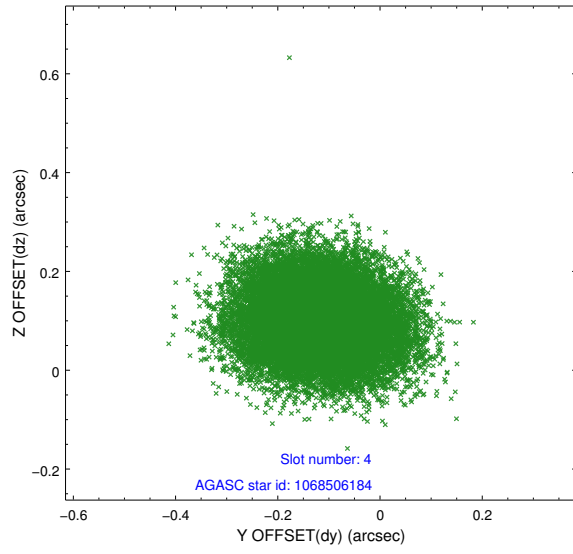
slot	status	id	mag	n_pts	med_dy	med_dz	dr1	dr2	ra	dec	mean_y	mean_z
0	FID	ACIS-S-1	7.20	8721	0.004	-0.032	0.010	0.017	0.000000	0.000000	940.05	-1724.22
1	FID	ACIS-S-4	7.20	8714	-0.013	0.002	0.007	0.011	0.000000	0.000000	2157.44	179.95
2	FID	ACIS-S-6	7.36	8719	-0.015	0.041	0.011	0.017	0.000000	0.000000	406.00	817.37
3	GUIDE	1007567472	9.20	17433	-0.027	-0.151	0.105	0.182	132.458388	-44.880848	1803.89	2164.88
4	GUIDE	1068506184	9.43	17433	-0.119	0.100	0.112	0.179	133.354089	-45.784106	2110.68	-1786.83
5	GUIDE	1068390080	8.91	17432	0.111	0.041	0.078	0.123	131.860714	-46.048812	-1600.51	-727.23
6	GUIDE	1068395856	8.23	17440	0.033	-0.025	0.065	0.101	131.866515	-46.451101	-2305.73	-1992.63
7	GUIDE	1068509768	9.66	17424	0.014	0.041	0.122	0.205	132.898806	-45.654489	1363.07	-802.85

2.4 Star Slots

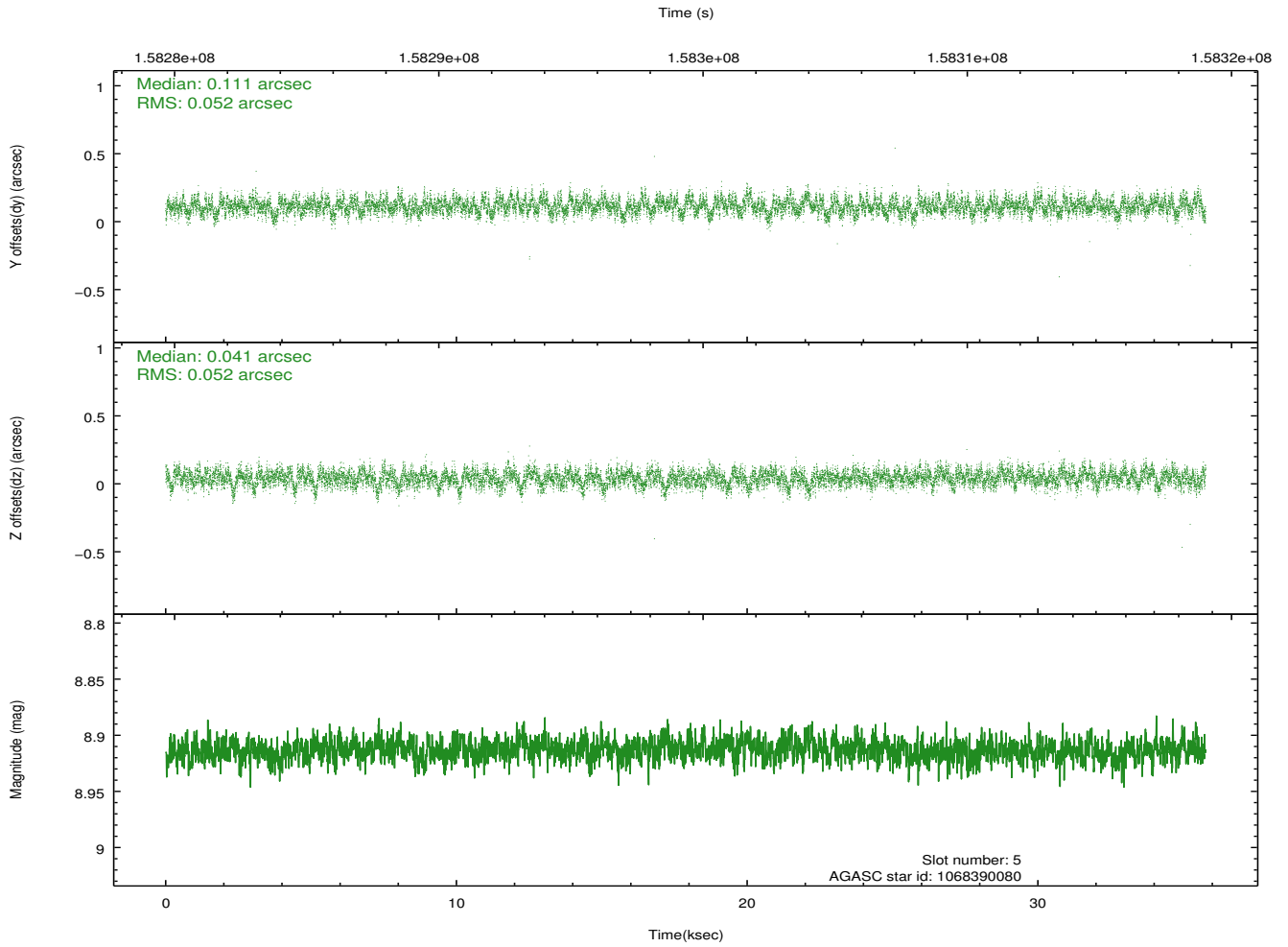
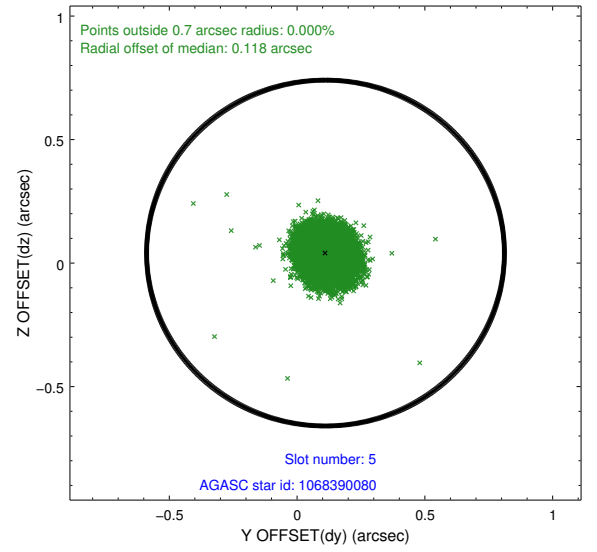
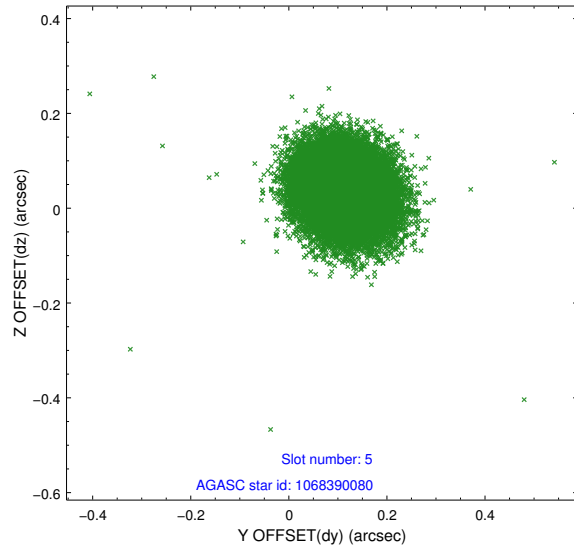
2.4.1 Slot 3



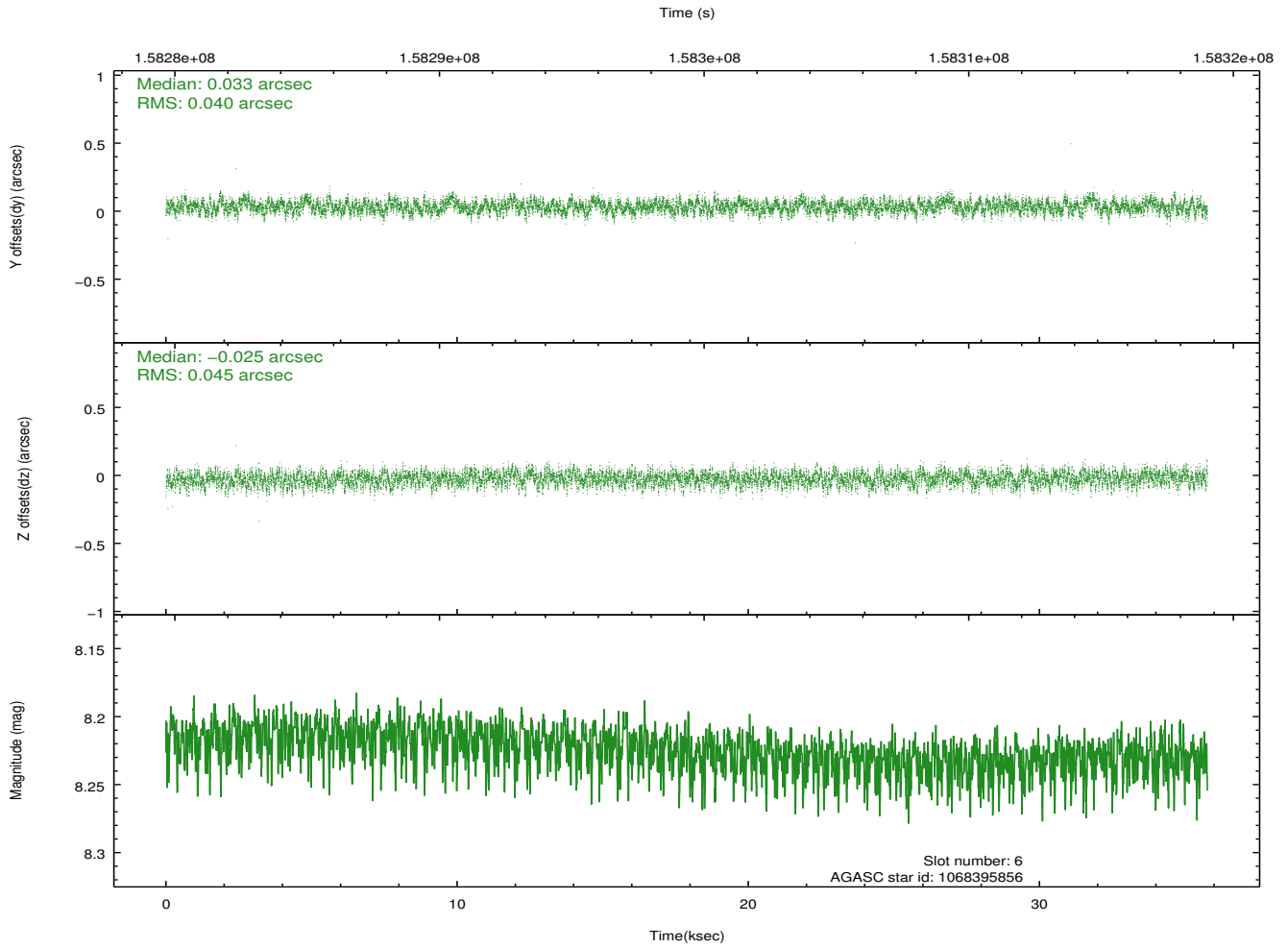
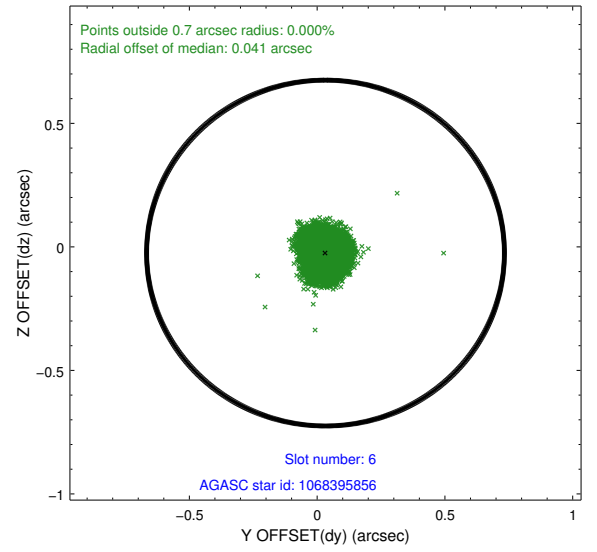
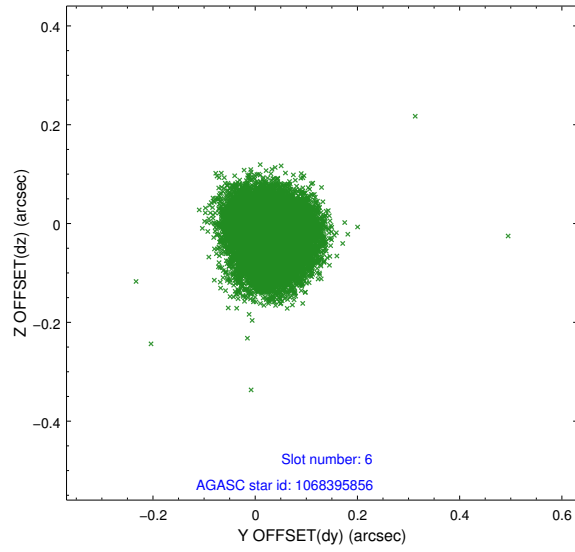
2.4.2 Slot 4



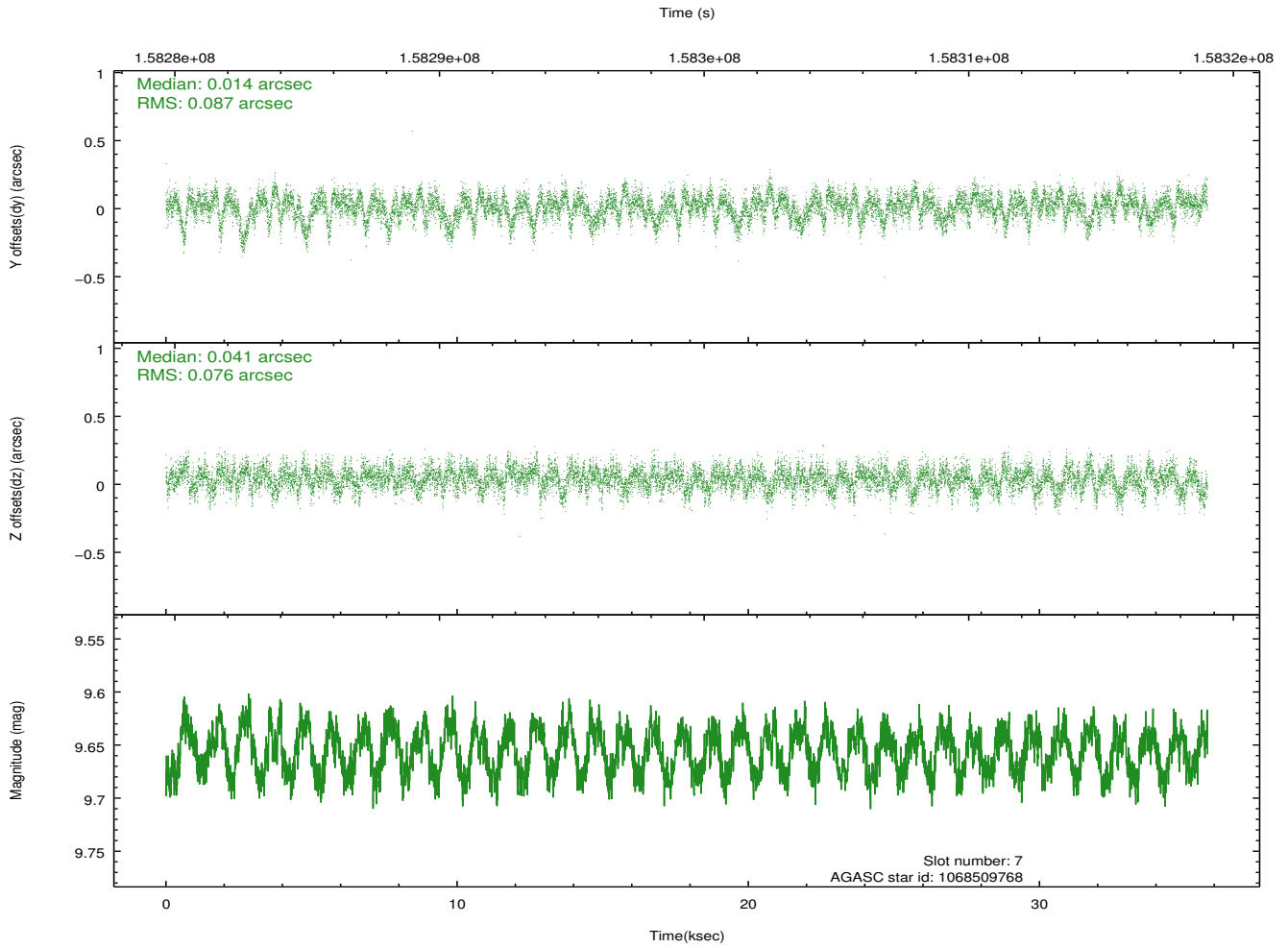
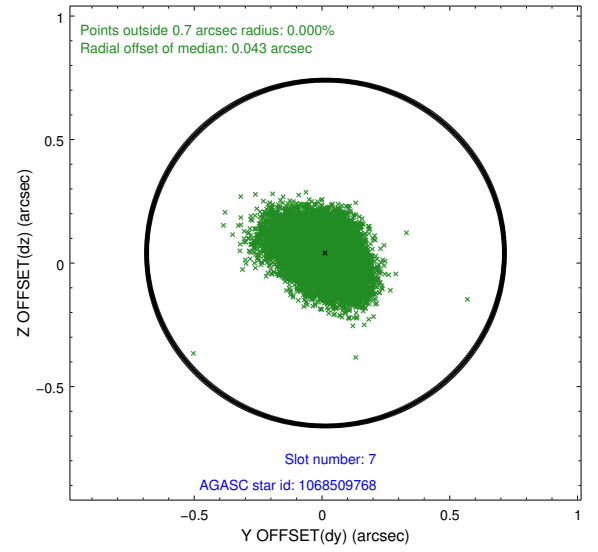
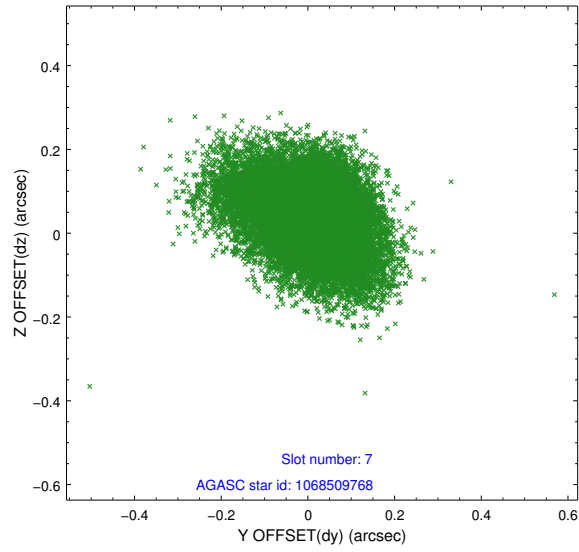
2.4.3 Slot 5



2.4.4 Slot 6

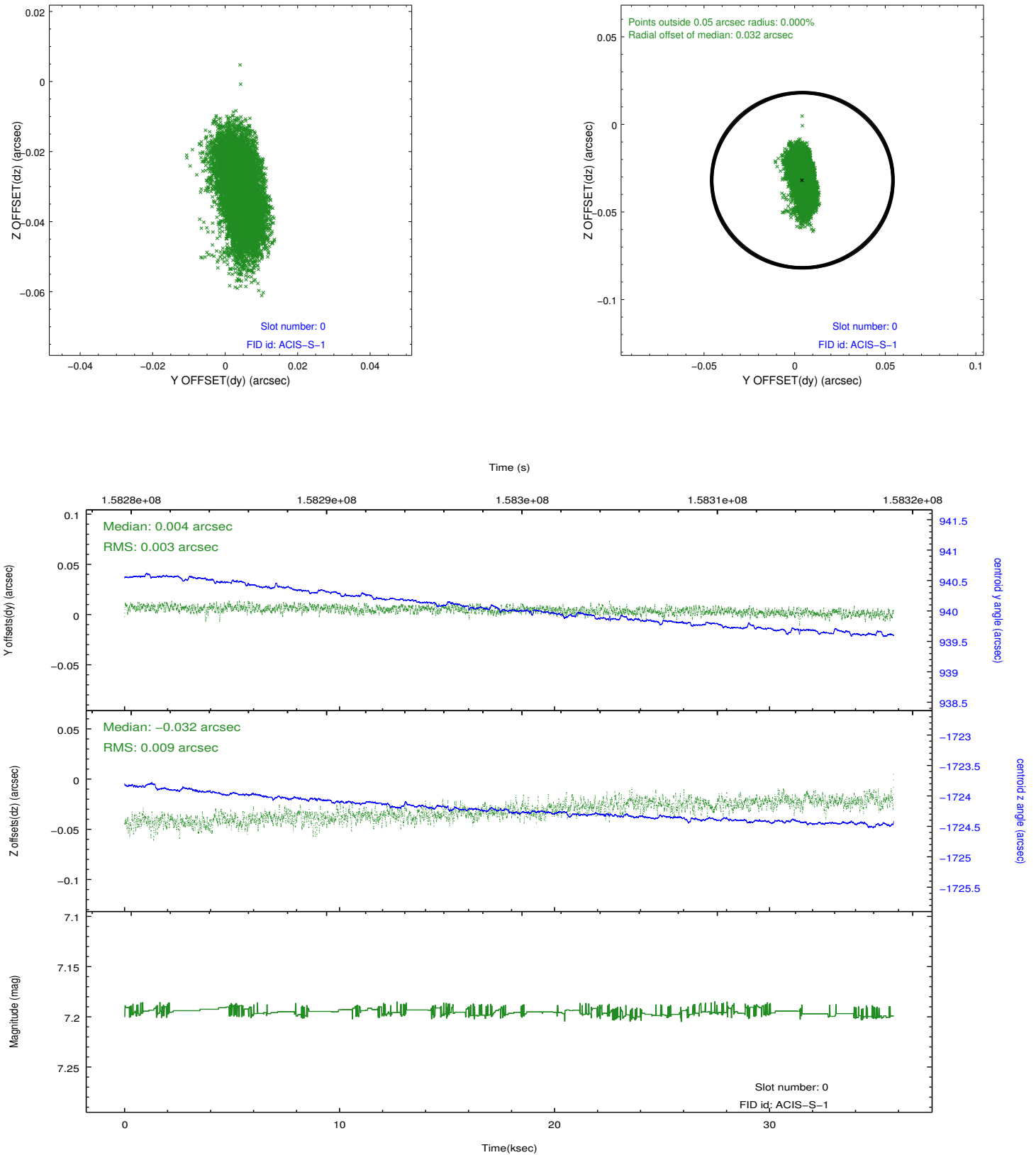


2.4.5 Slot 7

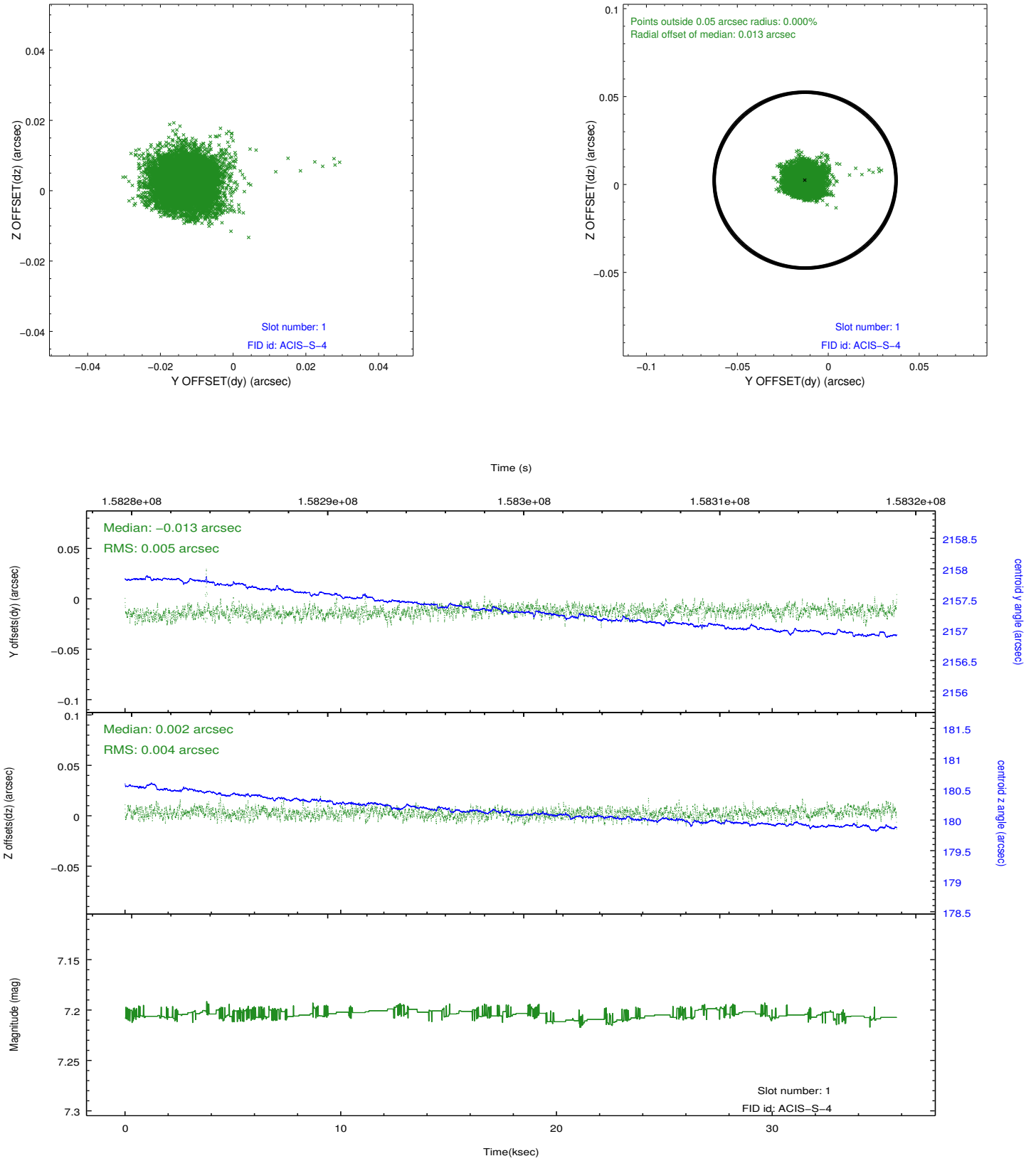


2.5 FID Slots

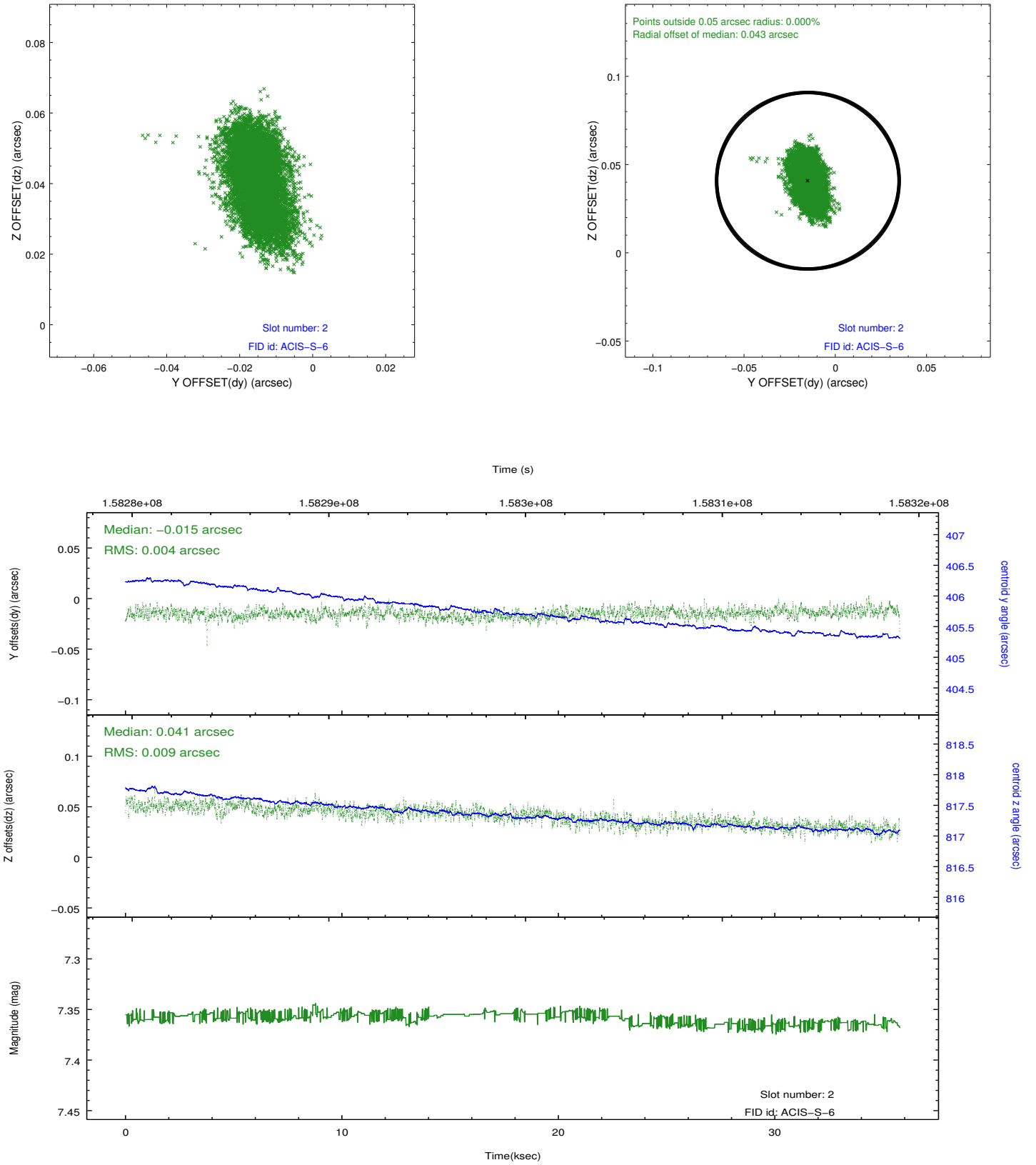
2.5.1 Slot 0



2.5.2 Slot 1



2.5.3 Slot 2



A Summary

A.1 Status

V&V Scientist	Jen Lauer
V&V Date (YYYY-MM-DD)	2012.11.01
V&V Edition	1
V&V Disposition and Status	OK
V&V Charge Time	34.963

A.2 Comments

Roll constraint met.